

FIRE MASTER TURNOUT GEAR

Our Coat

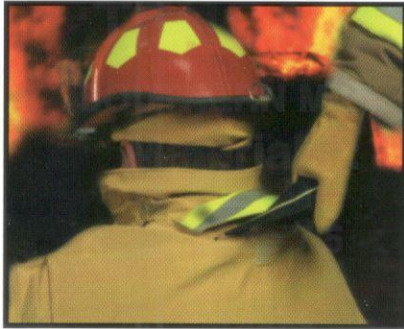
- 4-ply collar
- Hang-up loop
- Self-storing collar closure strap
- Radio chest pocket with drainage eyelets and flap closed with hook & loop
- Front-double closure sealed with hook & loop for front and storm flap, plus metal hook & dees or zipper closure
- Bellowed patch pockets with metal eyelet drain holes and hook & loop closure on flaps.
- 3" two tone reflective trim.
- 32" long, 3 panel body with underarm gussets
- Vertical inverted pleats on each side for action back
- Liner secured in place with snaps and hook & loop
- Large inside pocket attached to liner
- All major seams double stitched for maximum strength
- Stress points are thoroughly bar-tacked
- Leather, Self or Ara-Shield pads for elbows and sleeve cuffs
- Stedair 4000 sleeve wells to keep water from entering sleeve
- Rescue Drag Device

Our Pants

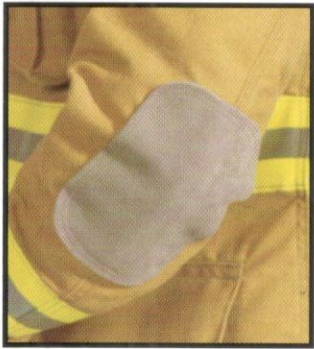
- Two layer thermal lined high back bib or waist cut
- Eight stainless steel suspender buttons or suspender loops
- Heavy duty "H" Back suspenders
- Two 4" adjustable take-up straps (one each side)
- Slanted thermal and vapor barrier fly flap closed with hook & loop and metal hook & dee or zipper
- Large bellowed patch pockets with metal drain eyelets and flaps with hook & loop closure
- Cuff and knee reinforcements of leather, Ara-Shield or self material

Fire Master Turnout Gear

Standard Features



Rescue Drag Device



**Reinforced
Knees and Elbows**

Leather
(Photo above)

Ara/Shield
Black
Gold
Grey

Self Material

**Flashlight
Tab and Strap
(Optional)**

Radio Pocket
Left or Right
Chest



**Removable
Knee Pad
(Optional)**

**Thumb
Hole
(Optional)**

**Bellowed
Pockets**

TENCATE

SOUTHERN MILLS

Materials :

Brigade 7.5

Pioneer
60% Kevlar
40% Nomex

Agility
50% Kevlar
30% Nomex
20% PBO

Kombat Flex

Millenia
40%Zylon
60%Technora

NFPA Trim Standard

Gusseted Knees



Custom Made To Your Personal Measurements

Thermal Liner/Moisture Barrier

Standard Features

Shoulder Strap Padding

Elbow Padding

4 Snaps
on Cuff

Optional Thermal Liners

Defender M
Brass



Camo



Caldura SL

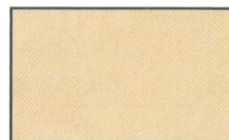


Quantum 3D

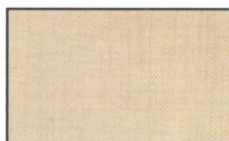


Caldura SL Thermal Liner and Stedair 3000
Moisture Barrier Standard As Shown

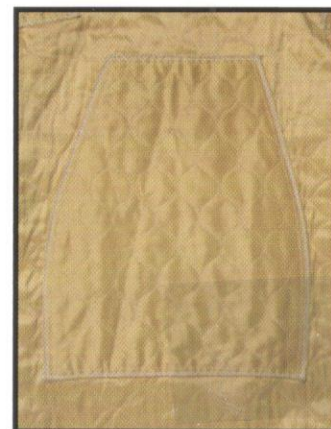
Stedair 3000



Stedair 4000



Optional



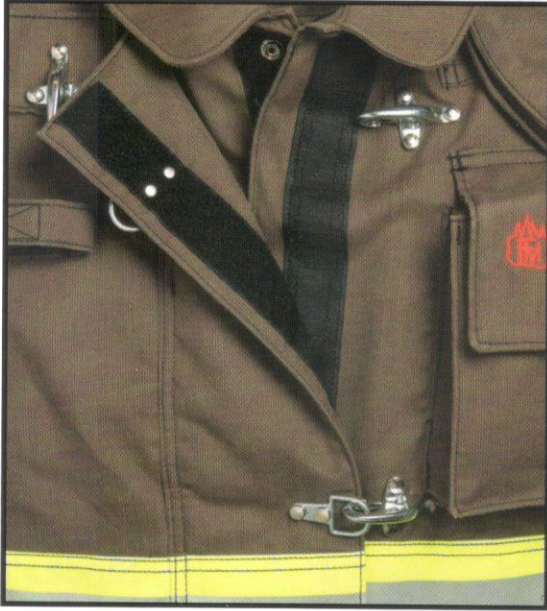
SCBA Pad

3 Ply Knee Padding

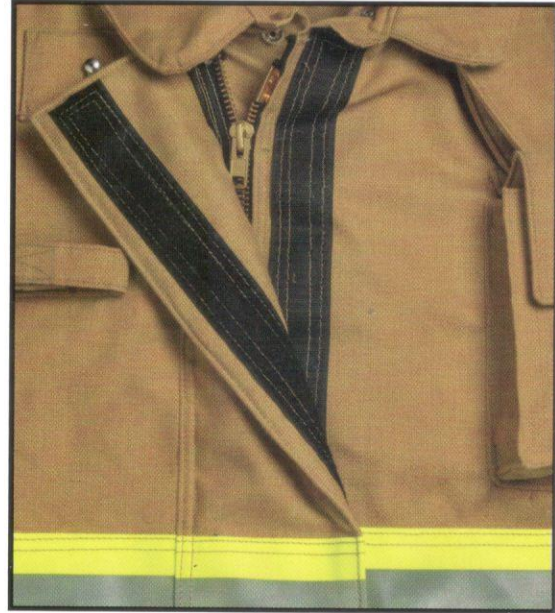
FR Hems
Double Stitched

Gusseted
Knees

Closures



Double Hook & Loop Closure with
Hook & Dees for Coat and Pants



Zipper Closure with Heavy-Duty
Zipper on Inside and Hook & Loop
for Coat and Pants

