

A man with a beard and sunglasses is operating a yellow Cub Cadet PRO Z 900 riding lawn mower in a green field under a blue sky with scattered clouds. The mower is shown from a side profile, moving towards the right. The text "PRO Z 900" is visible on the side of the engine housing. A thick yellow diagonal stripe runs across the top left corner of the image. A black diagonal band runs across the bottom right corner, containing the text "BUILT DIFFERENT" in large white letters and the Cub Cadet PRO SERIES logo in the bottom right corner.

**BUILT
DIFFERENT**

 **Cub Cadet**
PRO SERIES



It's easy to stick with what you know.

But real progress starts with doing something **different**.

Different isn't afraid to stand out.

Different doesn't back down from an uphill battle.

Different pushes the limits of what's possible.

Different is the beating heart of innovation.

The Pro Series by Cub Cadet®

BUILT DIFFERENT

cubcadet.com/pro





CONTENTS

PRO Z™ SERIES

6-17

PRO Z™ SUREPATH

18-21

PRO X™ SERIES

22-25

PRO HW™ SERIES

26-29

ACCESSORIES

30-31

SPECIFICATIONS

32-35



PRO Z™ SERIES

Your difference maker.

It takes a different kind of person to do what you do. And a different kind of machine. The PRO Z Series was built for exactly that. Maintenance-free spindles and EFI engine options amp up your productivity, while a fully welded frame and commercial-grade deck were engineered to stand up to tough demands for years to come. Add it to your crew and see the PRO Z difference for yourself.



What makes the Pro Z™ Series different?

CATEGORY-EXCLUSIVE STEERING SYSTEMS

EPS STEERING WHEEL & LAP BAR

COMMERCIAL-GRADE STRENGTH

7-GAUGE STEEL DECK

EASY AND QUICK DECK ADJUSTMENTS

ELECTRO-HYDRAULIC LIFT SYSTEM

HILLSIDE STABILITY

REAR DUAL-WHEEL TRACTION*

PRISTINE PASSES

MARBAIN® BLADES

*Only available on the PRO Z 900 Series

**“STICKS TO
OUR PARK HILL
LIKE GLUE.”**



**Indiana Groundskeeper
PRO Z™ 972 SD**



PRO Z 500

HORSEPOWER:
Up to 27 hp**

ENGINE DISPLACEMENT:
852cc

DECK SIZES:
54" and 60"

REAR TIRES:
24" x 12" – 12"

WARRANTY:
3-year limited,
no-hour-limit warranty*



PRO Z 700

HORSEPOWER:
Up to 31 hp**

ENGINE DISPLACEMENT:
999cc

DECK SIZES:
60"

REAR TIRES:
24" x 12" – 12"

WARRANTY:
3-year limited,
no-hour-limit warranty*



PRO Z 900

HORSEPOWER:
Up to 38.5 hp**

ENGINE DISPLACEMENT:
999cc

DECK SIZES:
60" and 72"

REAR TIRES:
Up to 26" x 12" – 12"

WARRANTY:
3-year limited,
no-hour-limit warranty*

PRO Z ATTACHMENTS

Attachments Sold Separately



PCS 1900 power collection system

19-inch diameter impeller housing and a 12-bushel, three-bag collection system.



Mulch kit

Mulching your lawn clippings allows for quick decomposition and returns essential nutrients back to the yard.

PRO Z™ DUAL-WHEEL SERIES

Hillside stability solved.

You never back down from a challenge. That's why the PRO Z SD and SDL are dual-wheel commercial zero-turns specifically engineered to tackle challenging terrain with up to a 25-degree slope. And with up to 30 degrees of self-leveling air-ride seat comfort (exclusive to the SDL) these mowers are built to tackle properties with hilly and varying terrain.



DUAL REAR WHEELS

Oversized dual rear wheels provide a high level of stability, traction and precision on the 972 SD and SDL.



PRO Z 972 SD

HORSEPOWER:
Up to 35 hp**

SEAT SWIVEL:
-

WARRANTY:
3-year limited, no-hour-limit*

DECK WARRANTY:
5-year / 1,750-hour
limited deck warranty*



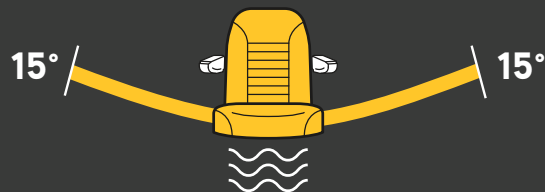
PRO Z 972 SDL

HORSEPOWER:
Up to 38.5 hp**

SEAT SWIVEL:
Self-leveling air-ride seat

WARRANTY:
3-year limited, no-hour-limit*

DECK WARRANTY:
5-year / 1,750-hour
limited deck warranty*



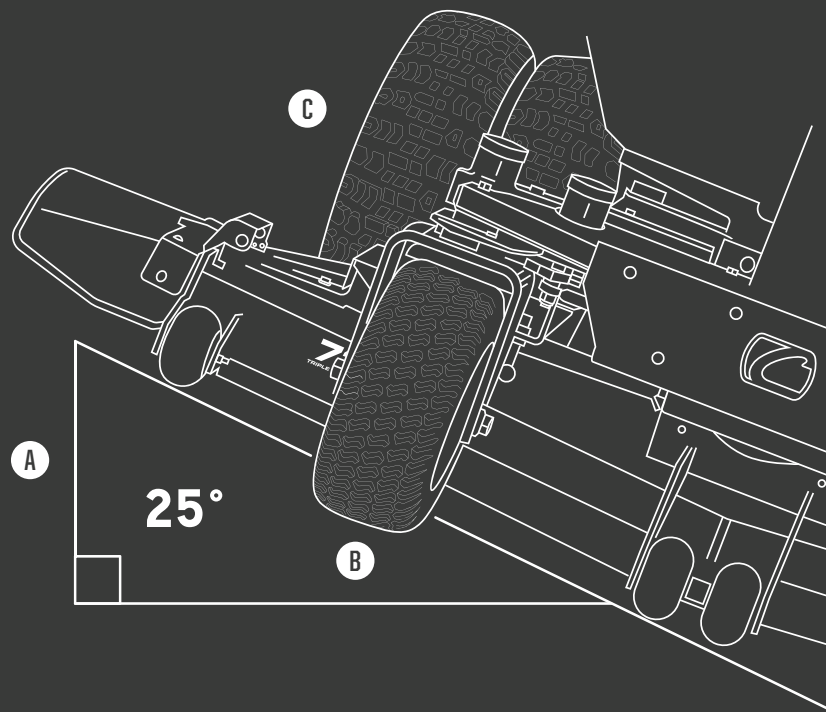
MAXIMIZED COMFORT

The self-leveling air-ride seat on the PRO Z 972 SDL lets you operate with up to 15 degrees of self-leveling from side to side.

HILLSIDE CONFIDENCE

Four-wheel steering control with power steering for hillside stability.

- A** Up to a 25-degree slope
- B** Category exclusive steering wheel control with power steering
- C** Dual wheel traction control



Deck size: 72"

PRO Z™ COMFORT

A different level of comfort.

When days are as long as yours, comfort isn't just nice to have—it's necessary. That's why we made the PRO Z Series ride as smooth as possible. Innovative features like the isolation dampening system and air-ride suspension help absorb impacts of the job, while adjustable seat firmness, lumbar support and padded armrests provide additional comfort so you'll be able to go the distance.



PRO Z AIR-RIDE SEAT

Our air-ride seat allows riders to adjust seat firmness to their personal preference. Standard on the PRO Z 900.

- A** Air-ride control
- B** EVC cushion (elastic vibration control)
- C** Isolation-dampening system
- D** Angle-back adjustment
- E** Adjustable padded armrests
- F** Adjustable lumbar support

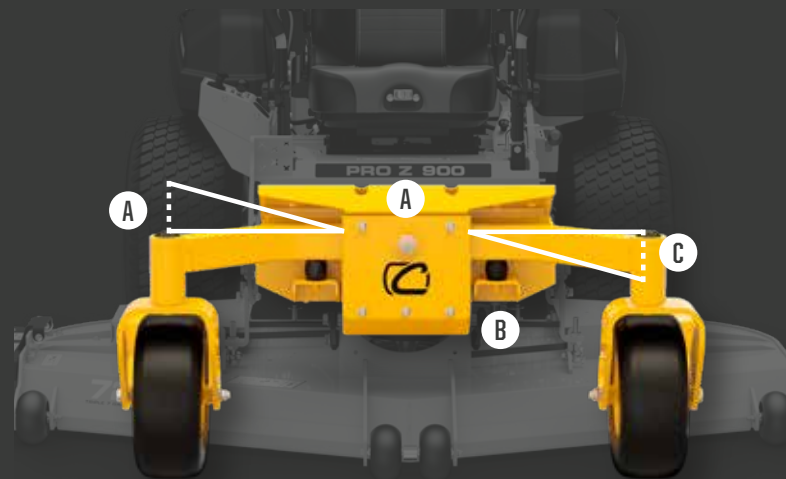


PIVOTING FRONT AXLE WITH ISOLATION-DAMPENING SYSTEM MOUNTS

A pivoting front axle allows the front end of the PRO Z to ride across unknown terrain while helping protect the quality of the cut.

The frame and axle float as the PRO Z moves, allowing the deck to follow the shape of the terrain and help avoid scalping.

- A** 2 1/4" of travel
(4 1/2" of total travel)
- B** Isolation-dampening system
(standard on the PRO Z 700 and 900 Series)
- C** Maximum angle of travel up to 6 degrees

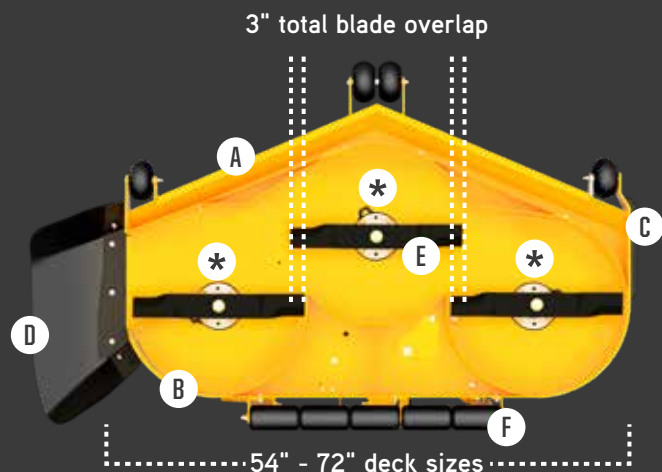


PRO Z™ STRENGTH

Strength without compromise.

You expect the best and the PRO Z Series deck delivers. Fully fabricated and triple plated steel thickness with top and bottom reinforcements—so you can power through the rigors of your job, day in and day out.





DECKS BUILT TO LAST

Tackle tough conditions with a triple-7-gauge steel cutting deck: a 7-gauge deck shell with 7-gauge top and bottom reinforcements.

Durability

- A** 1/4" leading rolled edge
- B** 5/16" steel side reinforcements
- C** 3/4" wear guard
- *** Maintenance-free spindle assembly

Quality Cut

- D** Flexible rubber discharge chute
- E** High-lift Marbain® blades
(with blade tip speed up to 18,500 fpm)
- F** Adjustable rear striping roller
(standard on the PRO Z 700 and 900 Series)

HARD-WORKING FRONT END

Help absorb the impact of rough terrain with new front-end construction featuring a combination of axle, hub and yoke size.

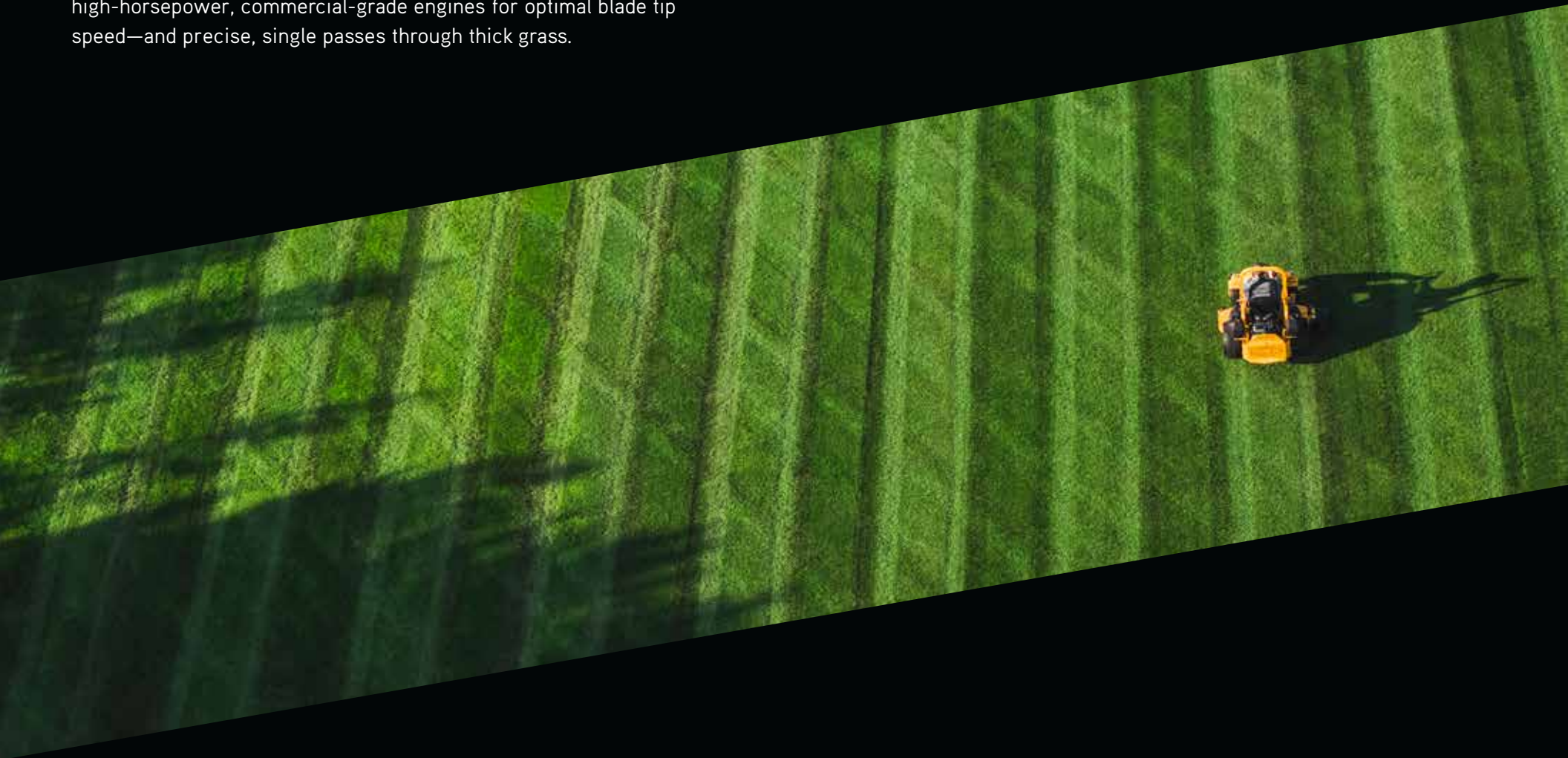
- A** 2" x 3" pivoting front axle
- B** Isolation-dampening system
(standard on the PRO Z 700 and 900 Series)
- C** 5" steel hubs
- D** 1/2" thick steel front yokes
- *** Sealed maintenance-free ball bearings



PRO Z™ PERFORMANCE

Built to meet high standards.

High standards like yours need high performance. That's why the PRO Z Series was engineered for consistent cut quality, in varying conditions. Featuring high-torque, commercial transmissions and high-horsepower, commercial-grade engines for optimal blade tip speed—and precise, single passes through thick grass.



POWERFUL KAWASAKI® ENGINES

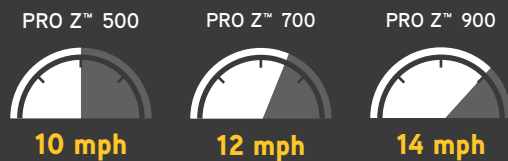


EFI engine technology available on select models

- Designed to deliver excellent horsepower
- Optimal balance of torque and power
- Maximum blade tip speed up to 18,500 fpm

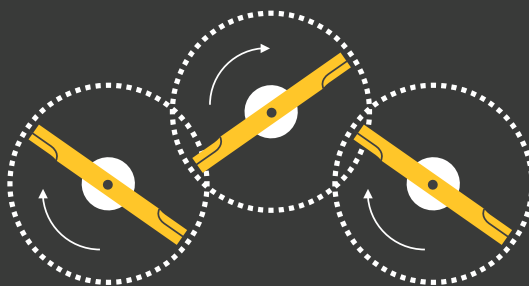
Shown above:
Kawasaki FX Series 38.5 hp** (999cc)

MAX SPEED



COMMERCIAL-QUALITY CUT AT HIGH SPEEDS

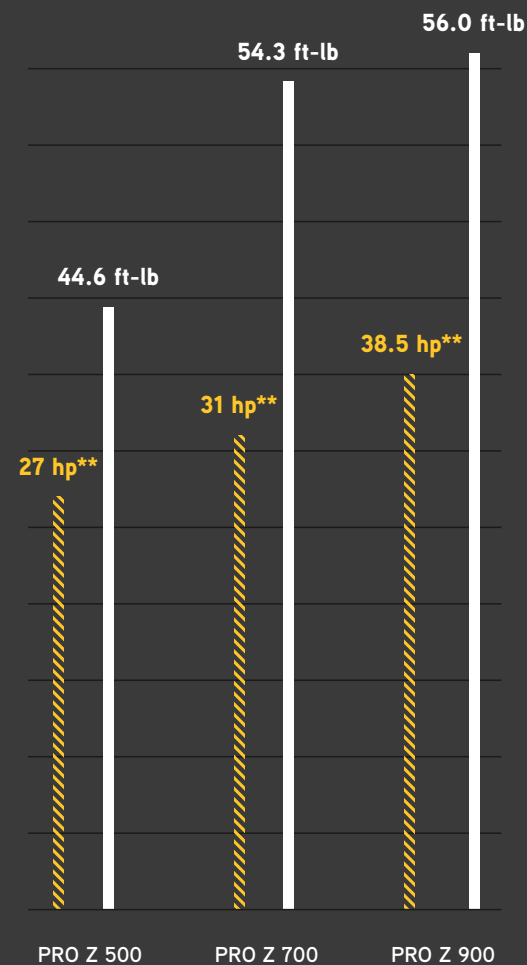
High-lift Marbain® blades with
blade tip speed up to 18,500 fpm



3" total blade overlap
(help save time by cutting more grass in one pass)

ENGINE HORSEPOWER AND TORQUE

▨ Horsepower [hp] ● Torque [ft-lb]





PRO Z™ SUREPATH™

A whole different kind of machine.

You're always looking for an edge—and SurePath Auto Steer technology is it. Cub Cadet's first GPS-operated and semi-autonomous mower. Designed to minimize overlap and hold straight lines while also making turns with a push of a button—this can save you and your crew valuable time and effort. SurePath technology only available with Cub Cadet.



What makes the SurePath™ Series different?

CUB CADET'S FIRST
GPS-OPERATED

ADVANCED TECHNOLOGY
SIMPLE THREE-STEP OPERATION

HELPS MINIMIZE EFFORT
SEMI-AUTONOMOUS STEERING

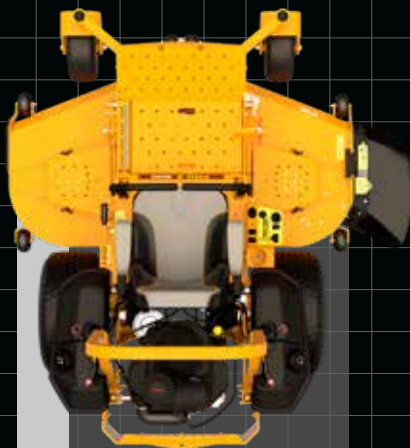
PRISTINE STRIPING
AUTO STEER CONSISTENCY

HELPS PREVENT TURFING
AUTO TURNS



+7.45"

MORE COVERAGE PER STRIPE***



11.2"

LAP BAR STRIPING OVERLAP



3.75"

SUREPATH™ STRIPING OVERLAP



PRO Z 960 SP

HORSEPOWER:

Up to 35 hp**

ENGINE DISPLACEMENT:

999cc

CUTTING WIDTH:

60"

FORWARD SPEED:

Up to 14 mph

WARRANTY:

3-year limited, no-hour-limit*

DECK WARRANTY:

5-year / 1,750-hour
limited deck warranty*



PRO Z 972 SP

HORSEPOWER:

Up to 35 hp**

ENGINE DISPLACEMENT:

999cc

CUTTING WIDTH:

72"

FORWARD SPEED:

Up to 14 mph

WARRANTY:

3-year limited, no-hour-limit*

DECK WARRANTY:

5-year / 1,750-hour
limited deck warranty*

*** SurePath efficiency and savings statistics are intended for illustrative purposes only. The efficiency and savings information presented is mathematically extrapolated from the measured overlap improvements between a Cub Cadet SurePath-equipped commercial zero-turn mower with a 72-inch cutting deck/cut width compared with an otherwise identically equipped Cub Cadet mower with traditional lap bar striping controls operated by a variety of professional landscapers in controlled conditions. The overlap improvements were measured by a third-party testing firm, which also extrapolated those results based on the commercial mowing industry norms and standards they identified. Actual results in the field will vary based on operator preferences, mowing conditions, terrain, site configurations and other factors.

Cub Cadet commercial products are intended for professional use. SurePath functionality is based on market availability. Programs and specs subject to change without notice.



PRO X™ SERIES

Different done better.

Your business stands apart. Your machines should too. The PRO X Series takes stand-on productivity to the next level with zero-turn maneuverability, easy-to-adjust suspension and a fully fabricated deck—helping your operation go further.



What makes the Pro X™ Series different?

COMPACT FOOTPRINT

OCCUPIES LITTLE TRAILER SPACE

EXCELLENT GROUND CLEARANCE

24-INCH TIRES

OPTIMAL PERFORMANCE

INTUITIVE MANEUVERABILITY

IMPACT ABSORPTION

ADJUSTABLE SUSPENSION

STRENGTH WITHOUT COMPROMISE

ULTRA-COMFORTABLE RIDE

“

**MAN, I FEEL 10 YEARS YOUNGER. I'M
TIME EFFICIENT, MY CUT'S A LOT BETTER.
IT'S OVERALL, JUST THE REAL DEAL.**



Joe Dunbar
Smokin' Joes Lawn Care

”



PRO X 636

HORSEPOWER:
Up to 18.5 hp**

ENGINE DISPLACEMENT:
603cc

CUTTING WIDTH:
36"

REAR TIRES:
21" x 8.5" – 10"

DECK WARRANTY:
2-year limited,
no-hour-limit
manufacturer's warranty*



PRO X 648

HORSEPOWER:
Up to 22 hp**

ENGINE DISPLACEMENT:
726cc

CUTTING WIDTH:
48"

REAR TIRES:
24" x 9.5" – 12"

DECK WARRANTY:
5-year limited,
1,750-hour limited
manufacturer's warranty*



PRO X 654

HORSEPOWER:
Up to 29.5 hp**

ENGINE DISPLACEMENT:
852cc

CUTTING WIDTH:
54"

REAR TIRES:
24" x 12" – 12"

DECK WARRANTY:
5-year limited,
1,750-hour limited
manufacturer's warranty*



PRO X 660

HORSEPOWER:
Up to 29.5 hp**

ENGINE DISPLACEMENT:
852cc

CUTTING WIDTH:
60"

REAR TIRES:
24" x 12" – 12"

DECK WARRANTY:
5-year limited,
1,750-hour limited
manufacturer's warranty*

PRO X ATTACHMENTS

Attachments Sold Separately



Side bagger

Side-mounted steel bagger with 4.3 cu-ft of capacity for grass, leaves and debris.



Light kit

Help illuminate your mowing path with the easy-to-install pre-wired LED light kit that has pre-drilled mounting points.



PRO HW™ SERIES

Cut with more confidence.

You don't settle for average. That's why these walk-behinds are anything but. The durable PRO HW Series is tough enough to handle long days and demanding jobs while the innovative steering allows you to command every pass with precision and minimal effort. The result? A pristine and efficient cut, season after season.



What makes the Pro HW™ Series different?

STRENGTH

FULLY FABRICATED DECK

SPEED CONTROL

HYDRO DRIVE SYSTEM

EASY STEERING

MULTI- OR EASY-TRAC STEERING

PERFORMANCE

HIGH-LIFT MARBAIN® BLADES

STRENGTH

10-GAUGE STEEL DECK





PRO HW 336

HORSEPOWER:

Up to 14.5 hp**

ENGINE MANUFACTURER:

Kawasaki® FS481v - recoil start

CUTTING WIDTH:

36"

REAR TIRES:

18" x 6.5" – 8"

WARRANTY:

2-year limited, no-hour-limit warranty*



PRO HW 348

HORSEPOWER:

Up to 15 hp**

ENGINE MANUFACTURER:

Kawasaki FS541v - electric start

CUTTING WIDTH:

48"

REAR TIRES:

20" x 10" – 8"

WARRANTY:

2-year limited, no-hour-limit warranty*



PRO HW 354

HORSEPOWER:

Up to 18.5 hp**

ENGINE MANUFACTURER:

Kawasaki FS600v - electric start

CUTTING WIDTH:

54"

REAR TIRES:

20" x 10" – 8"

WARRANTY:

2-year limited, no-hour-limit warranty*

PRO HW ATTACHMENTS

Attachments Sold Separately



Trash collector bag

Mesh bag with three compartments that can be used for debris pickup or water bottles.



Sulky

Convert your PRO HW into a stand-on riding mower with a single-wheel sulky or two-wheel sulky for more stability.

ACCESSORIES

	PRO Z™ 500				PRO Z 700	
	Z 554 L	Z 554 S	Z 560 L	Z 560 S	Z 760 L	Z 760 S
BAGGING SYSTEMS						
Power-Assist Triple Bagger	•	•	•	•	•	•
Power-Assist Clamshell Bagger	•	•	•	•	•	•
Bagger Weight Kit / Front Weight Kit	•		•		•	
PRO Z Triple Bag Kit	•	•	•	•	•	•
Blower Mounting Kit	•	•	•	•	•	•
PRO Z Blower Fan Assembly	•	•	•	•	•	•
Mulching Kit	•	•	•	•	•	•
4.3 cu-ft Steel Bagger						
Bagger Mount Kit						
DECK MOUNTED STRIPING KITS						
Deck-Mounted Striping Kit						
Deck-Mounted Striping Roller Kit	•	•	•	•		
ELECTRONICS						
12V Outlet Kit (dash-mounted)	•	•	•	•	•	•
Light Kit	•	•	•	•	•	•
SNOW ATTACHMENTS AND ACCESSORIES						
Tire chains	•	•	•	•	•	•
OTHER						
Electronic / Power Deck Lift Kit (dash-mounted)	•	•	•	•	•	•
24" Traction Tire / Rim (set of 2)	•	•	•	•	•	•
26" Traction Tire / Rim (set of 2)						
Caster Wheel Kit (deck-mounted)			•	•	•	•
24" x 12" – 12" Single Tire / Rim	•	•	•	•	•	•
26" x 12" – 12" Single Tire / Rim						
Mesh Storage Bag						
Single-Wheel Sulky						
Two-Wheel Sulky						
Discharge Block-Off Kit						

PRO Z 900

PRO X™

PRO HW™

Z 960 L	Z 960 S	Z 972 L	Z 972 S	Z 972 SD/SDL	Z 960 S SP	Z 972 S SP	X 636	X 648	X 654	X 660	HW 336	HW 348	HW 354
•	•				•								
•	•				•								
•													
•	•				•								
•	•				•								
•	•				•								
•	•	•	•	•	•	•	•	•	•	•	•	•	•
							•	•	•	•	•	•	•
								•	•	•	•	•	•
								•	•	•			
•	•	•	•		•	•	•	•	•	•			
•	•	•	•	•	•	•	•	•	•	•	•	•	•
•	•	•	•	•	•	•							
•	•	•	•		•	•							
•	•	•	•		•	•							
											•	•	•
											•	•	•
											•	•	•
								•	•	•			

PRO Z™ SERIES

PRO Z™ 500

PRO Z 700

	Z 554 L/S KW		Z 560 L/S KW	Z 760 L/S KW	
ENGINE AND DRIVE SYSTEM					
Engine / Manufacturer	Kawasaki® FX850v			Kawasaki FX921v	
Horsepower	27 hp**			31 hp**	
Displacement	852cc			999cc	
Fuel Capacity	14.9 gal (twin 7.45 gal tanks) with dial gauge			14.9 gal (twin 7.45 gal tanks) with electric gauge	
Transmission	12cc Parker® HTJ pump with hydro release lever			14cc Parker HTG pump with hydro release lever	
Ground Speed (forward/reverse)	Up to 10 mph / 5 mph			Up to 12 mph / 6 mph	
MOWER DECK					
Cutting Width	54"		60"	60"	72"
Deck Shell Construction	Floating, fabricated 7 ga (0.187") steel			Floating, fabricated 7 ga (0.187") steel	
Reinforcements (top/bottom — leading edge)	7 ga / 7 ga – 1/4"			7 ga / 7 ga – 1/4"	
Side Reinforcement	5/16" steel			5/16" steel	
Wear Guard	3/4" trim-side (polymer)			3/4" trim-side (polymer)	
Blades / Blade-Tip Speed	3 high-lift Marbain blades / 18,500 fpm (approx.)			3 high-lift Marbain blades / 18,500 fpm (approx.)	
Spindle Construction	8" sealed cast-aluminum housing (maintenance-free)			8" sealed cast-aluminum housing (maintenance-free)	
Discharge Chute	High-density rubber			High-density rubber	
Deck Lift System	Foot pedal with spring assist			Foot pedal with spring assist	
Height Positions / Height Range	16 / 1" – 5"			16 / 1" – 5"	
CHASSIS					
ROPS	2" x 2" quick-latch toolless foldable 3-position			2" x 2" quick-latch toolless foldable 3-position	
Rear Bumper	5/16"-thick steel, standard rear hitch (e-coated)			5/16"-thick steel, standard rear hitch (e-coated)	
Additional Bumper Features	Pre-drilled mounts for attachments			Pre-drilled mounts for attachments	
Frame	Fully welded, 3/8" x 5" laser-cut steel full-length (e-coated)			Fully welded, 3/8" x 5" laser-cut steel full-length (e-coated)	
Additional Frame Features	Integrated tie-down slots			Integrated tie-down slots	
Safety Lighting	—			—	
Front Axle	2" x 3" solid steel with sealed ball bearing			2" x 3" solid steel with sealed ball bearings and isolation-dampening system	
Front Yoke	1/2"-thick steel with sealed ball bearings			1/2"-thick steel with sealed ball bearings	
OPERATION					
PTO	Warner PTO clutch (125 ft-lb)			Warner PTO clutch (200 ft-lb) with Soft-Start	Warner PTO clutch (225 ft-lb) with Soft-Start
Steering Control (L/S models)	Lap bar / adjustable tilting steering wheel with electronic power steering (EPS)			Lap bar / adjustable tilting steering wheel with EPS	
Operator Controls	Low-profile throttle lever with dash guard			Low-profile throttle lever with dash guard	
Additional Controls	Sealed key switch / fingertip engagement PTO / resettable maintenance meter			Sealed key switch / fingertip engagement PTO / resettable maintenance meter	
Parking Brake (L/S models)	Hand operated with hydro-pump release			Hand operated with hydro-pump release	
Front Tires (L/S models)	Smooth 13" x 6.5" – 6" / turf 15" x 6" – 6"			Smooth (run flat) 13" x 6.5" – 6" / turf 16" x 6.5" – 8"	
Rear Tires (L/S models)	Turf 24" x 12" – 12"			Turf 24" x 12" – 12"	
Seat Type	High-back dial suspension with EVC cushion, seat belt, angle-back adjust and armrests			High-back dial suspension, EVC cushion, seat belt, angle-back adjust, lumbar support, padded armrests, isolation-dampening system mounted base (lateral suspension)	
Seat Control Swivel	—			—	
DIMENSIONS					
Length	84"			86"	
Width (chute up / down)	56" / 67"		62" / 73"	62" / 73"	74" / 85"
Height (ROPS down / up)	50" / 74"			52" / 74"	
Weight	1,300 / 1,438 lbs		1,324 / 1,462 lbs	1,424 / 1,562 lbs	1,475 / 1,613 lbs
WARRANTY					
Warranty Information*	3-year limited, no-hour-limit warranty* 5-year limited, 1,750-hour limited deck warranty*			3-year limited, no-hour-limit warranty* 5-year limited, 1,750-hour limited deck warranty*	
TECH PACKAGE					
Joystick Control Handle	—			—	
GPS / Tower Antenna	—			—	
Overlap Cutting / Tracking	—			—	

PRO Z 900

Z 960 L/S KW		Z 960 L EFI		Z 972 L EFI		Z 972 L/S KW		Z 972 SD		Z 972 SDL		Z 972 SDL EFI		Z 960 S SP		Z 972 S SP	
Kawasaki FX1000V 35 hp**		Kawasaki FX1000V-EFI 38.5 hp**		Kawasaki FX1000V 35 hp**		Kawasaki FX1000V 35 hp**		Kawasaki FX1000V 35 hp**		Kawasaki FX1000V-EFI 38.5 hp**		Kawasaki FX Series 1000V 35 hp**					
						999cc											
						14.9 gal (twin 7.45 gal tanks) with electric gauge											
		16cc Parker HTG pump with hydro release lever Up to 14 mph / 7 mph						Dual 16cc Parker HTG pump with hydro release lever Up to 12 mph / 6 mph						Up to 14 mph / 6 mph			
60"				72"								60"		72"			
				Floating, fabricated 7 ga (0.187") steel													
				7 ga / 7 ga – 1/4"													
				5/16" steel													
				3/4" trim-side (polymer)													
				3 high-lift Marbain blades / 18,500 fpm (approx.)													
				8" sealed cast-aluminum housing (maintenance-free)													
				High-density rubber													
Foot pedal with spring assist						Electronic power deck lift system (included)						Foot pedal with spring assist					
				16 / 1" – 5"													
				2" x 2" quick-latch toolless foldable 3-position													
				5/16"-thick steel, standard rear hitch (e-coated)													
				Pre-drilled mounts for attachments													
				Fully welded, 3/8" x 5" laser-cut steel full-length (e-coated)													
				Integrated tie-down slots													
—								6 LED Lights for 360 degrees of lighted visibility; amber beacon with three position adjustments				—					
				2" x 3" solid steel with sealed ball bearings and isolation-dampening system													
				1/2"-thick steel with sealed ball bearings													
Warner PTO clutch (200 ft-lb) with Soft-Start				Warner PTO clutch (225 ft-lb) with Soft-Start						Warner PTO clutch (200 ft-lb) with Soft-Start		Warner PTO clutch (225 ft-lb) with Soft-Start					
Lap bar / adjustable tilting steering wheel with EPS						Adjustable tilting steering wheel with EPS						High performance, adjustable tilting steering wheel with EPS and foot-pedal speed control					
				Low-profile throttle lever with dash guard													
Sealed key switch / fingertip engagement PTO / resettable maintenance meter						Sealed key switch / fingertip engagement PTO / resettable maintenance meter / 12-volt outlet kit											
				Hand operated with hydro-pump release													
Smooth (run flat) 15" x 6" – 6" / turf 16" x 6.5" – 8"						Turf 16" x 6.5" – 8" with weighted rim											
Turf 26" x 12" – 12"						Dual Terra Trac tread 25" x 9" – 12" (18" trac width)						Turf 26" x 12" – 12"					
				High-back air-ride suspension, EVC cushion, seat belt, angle-back adjust, lumbar support, padded armrests, isolation-dampening system mounted base (lateral suspension)													
—						User-controlled lock / unlock swivel seat for operator leveling up to 30-degrees total / 15-degrees left or right travel						—					
				88"													
62" / 73"				74" / 85"								62" / 73"		74" / 85"			
48" / 75"				52" / 75"				49" / 75"				48" / 75"		52" / 75"			
1,442 / 1,580 lbs		1,447 lbs		1,596 lbs		1,591 lbs / 1,631 lbs		1,850 lbs		1,885 lbs		1,890 lbs		1,610 lbs		1,690 lbs	
				3-year limited, no-hour-limit warranty* 5-year limited, 1,750-hour limited deck warranty*													
														Engagement indicator lights for cut line setting, RH/LH auto turning			
														LED lights show Auto Steer engagement			
														Dash-mounted adjustable knob for deck cutting overlap			

PRO X™ SERIES

PRO X™ 600

	X 636	X 648	X 654	X 654 EFI	X 660	X 660 EFI
ENGINE AND DRIVE SYSTEM						
Engine / Manufacturer	Kawasaki® FS600v	Kawasaki FX691V	Kawasaki FX801V	Kawasaki FX850 EFI	Kawasaki FX801V	Kawasaki FX850 EFI
Horsepower	18.5 hp**	22 hp**	25.5 hp**	29.5 hp**	25.5 hp**	29.5 hp**
Displacement	603cc	726cc	852cc			
Fuel Tank Capacity With Gauge	6 gal	8 gal				
Transmission	12cc Hydro-Gear® pumps / 14.5 cu. in. Parker® wheel motors					
Ground Speed (forward/reverse)	Up to 8.5 mph / 3.5 mph	Up to 10 mph / 5 mph				
MOWER DECK						
Cutting Width	36"	48"	54"		60"	
Blades	2 high-lift 18.5" Marbain® blades with 1.5" blade overlap	3 high-lift 17" Marbain blades with 1.5" blade overlap	3 high-lift 19" Marbain blades with 1.5" blade overlap		3 high-lift 21" Marbain blades with 1.5" blade overlap	
Deck Construction	10 ga shell with 7 ga top and bottom reinforcement					
Reinforcements (top/bottom — leading edge)	—					
Side Reinforcement	—					
Wear Guard	—					
Spindle Design	5" sealed cast aluminum housing (maintenance-free)	HD 8" aluminum housing, 35mm double-row sealed ball bearings, 1-3/8" through-shaft and maintenance-free design				
Discharge Chute	High-density rubber					
Deck Lift System						
Deck Height Adjust	Hand lever adjusting spring assist, pin selector for height					
Height Positions / Height Range	—					
Cutting Height	1.75" – 4"	1-1/2" – 5"				
Anti-Scalp Deck Gauge Wheels	—	2 front deck gauge wheels	4 front deck gauge wheels			
CHASSIS						
Frame	1.5" x 3" full-length tube frame	2" x 3" full-length tube frame				
Drive Axles	1-1/8"					
Front Axle	2" x 3" tube construction					
Front Caster / Yoke	3/8" thick steel					
Rear Track Width	33"	46"	50"		54"	
Additional Frame Features	—					
OPERATION						
PTO Clutch Engagement & Type	Electronic with quick reset					
Steering Controls	—					
Operator Controls	—					
Additional Controls	—					
Starting	Electric starter					
Battery Cover / Storage	—	Toolless battery cover / oversized cup holder, storage compartment with cargo net				
Suspension	Toolless	Hand lever adjust, 3-position spring suspension foot platform				
Instrumentation	Hour meter, fuel gauge, key switch, throttle, choke			Hour meter, fuel gauge, key switch, throttle	Hour meter, fuel gauge, key switch, throttle, choke	Hour meter, fuel gauge, key switch, throttle
Cushion Padding	3-position operator cushion	3-position operator cushion with cargo pocket				
Parking Brake / Brake Type	Hand lever control / scrub brake	Hand lever control / external band				
Front Caster Tires	11" x 4" – 5" smooth flat-free	13" x 5" – 6" smooth flat-free				
Rear Drive Tires	21" x 8.5" – 10"	24" x 9.5" – 12"	24" x 12" – 12"			
DIMENSIONS						
Length	62"	69"				
Width (chute down/up)	50" / 38"	62" / 50"	68" / 56"		74" / 62"	
Height	47"					
Weight	850	1,015	1,080		1,115	
WARRANTY						
Warranty Unit*	2-year limited, no-hour-limit*	3-year limited, no-hour-limit warranty*				
Warranty (Engine)*	2-year limited, no-hour-limit*	3-year limited manufacturer's warranty*				
Warranty (Deck)*	2-year limited, no-hour-limit*	5-year limited, 1,750-hour limited manufacturer's warranty*				

PRO HW™ SERIES

PRO HW

	HW 336		HW 348	HW 354
ENGINE AND DRIVE SYSTEM				
Engine / Manufacturer	Kawasaki FS481v (recoil)		Kawasaki FS541v (electric start)	Kawasaki FS600v (electric start)
Horsepower	14.5 hp**		15 hp**	18.5 hp**
Displacement			603cc	
Fuel Tank Capacity With Gauge			5 gal	
Transmission	Hydro-Gear ZT 2800 charged (commercial grade)			
Ground Speed (forward / reverse)	Up to 7 mph / 3 mph			
MOWER DECK				
Cutting Width	36"	48"	54"	
Blades	3 high-lift Marbain blades / 18,500 fpm (approx.)			
Deck Construction	Fixed floating, fabricated 10-ga (0.135") steel			
Reinforcements (top/bottom — leading edge)	7 ga / 7 ga — 7 ga			
Side Reinforcement	1/4" steel			
Wear Guard	3/4" trim-side (polymer)			
Spindle Design	5" sealed cast-aluminum housing (maintenance-free)			
Discharge Chute	High-density rubber			
Deck Lift System	4-pin manual with deck-mounted lift handles			
Deck Height Adjust	—			
Height Positions / Height Range	7 / 1.5" – 4.5"			
Cutting Height	—			
Anti-Scalp Deck Gauge Wheels	—			
CHASSIS				
Frame	Operator tower with 7-ga construction			
Drive Axles	—			
Front Axle	1.5" x 3" fully welded tube			
Front Caster / Yoke	3/8"-thick steel with sealed ball bearings			
Rear Track Width	—			
Additional Frame Features	Frame-mounted foot pedal front-end lift assist			
OPERATION				
PTO Clutch Engagement & Type	Warner® PTO clutch (125 ft-lb)			
Steering Controls	Hand-lever steering control with ball-bearing linkage for smooth feel			
Operator Controls	Single-knob straight-line tracking adjustment			
Additional Controls	Single-level speed control (0–7 mph)			
Starting	—			
Battery Cover / Storage	—			
Suspension	—			
Instrumentation	—			
Cushion Padding	—			
Parking Brake / Brake Type	Hand-operated lever			
Front Caster Tires	11" x 4.5" smooth run flat			
Rear Drive Tires	Turf 18" x 6.5" – 8"	Turf 20" x 10" – 8"		
DIMENSIONS				
Length	77"			
Width (chute down / up)	49" / 38"	61" / 50"	67" / 56"	
Height	45"		46"	
Weight	590 lbs	665 lbs	720 lbs	
WARRANTY				
Warranty Unit*	2-year limited, no-hour-limit warranty*			
Warranty (Engine)*	—			
Warranty (Deck)*	—			

YOUR AUTHORIZED CUB CADET® DEALER MAKES YOUR EXPERIENCE EVEN BETTER.

INDEPENDENT DEALER
Cub Cadet®

Cub Cadet dealers know their equipment. And they know how to take care of it and their customers. You'll get exceptional financing, great offers and the expertise you can only find from professionals who sell and service Cub Cadet equipment every day.

Support as strong as our machines, seven days a week, visit cubcadet.com or call toll-free 1-877-428-2349.



[FACEBOOK.COM/CUBCADET](https://www.facebook.com/CUBCADET)



[CUBCADET_USA](https://twitter.com/CUBCADET_USA)



[CUBCADETPRO](https://www.instagram.com/CUBCADETPRO)

PROUD SUPPORTING MEMBERS OF NALP AND EQUALIS



EXCEPTIONAL FINANCING OFFERS†



* 3-year limited unit warranty, unlimited hours. 5-year limited deck warranty up to 1,750 hours. 2-year limited unit warranty, unlimited hours. 2-year limited deck warranty, no-hour-limit. For full warranty details and exclusions, visit www.cubcadet.com or your local dealer.

** As rated by Kohler, all power levels are stated in gross horsepower at 3600 RPM per SAE J1940. As required by Kawasaki, horsepower tested in accordance with SAE J1995 and rated in accordance with SAE J2723 and certified by SAE International.

KOHLER® is a registered trademark of KOHLER Co.
Kawasaki® is a registered trademark of Kawasaki Motors Corp.

† Restrictions apply. See dealer for details.

Cub Cadet commercial products are intended for professional use. See owner's manual or your local Cub Cadet Independent Dealer for warranty details and information. Certain restrictions apply.

This brochure is for advertisement purposes only. The product depictions are not meant to be used or relied upon as a substitute for the safety and use information that is published in the respective operator's manual and on the machine. Models subject to limited availability.

Images may not reflect dealer inventory and/or unit specifications. Specifications subject to change without notice.

© 2023 Cub Cadet | Printed in U.S.A. | 773-10377