

A-A

AREA 8

4'-11 3/4"

EQ. EQ. SPACED

1/8" GAP

10'-0" MAX.

1/8" GAP

(2) 2" DIA. HOLES THRU SLABS FOR LIFTING

2'-0" TYP.

2'-0" TYP.

5/8"

3/4"

MATCH LINE (SEE 1/C3.0)

TOTAL LENGTH OF EXISTING BARRIER ±624 LF

BASE BID: REPLACE 624 LF CONCRETE JERSEY BARRIER

ADD. ALT. #1: REMOVE EXISTING JERSEY BARRIERS & REPLACE WITH 624 LF CONCRETE BARRIER RAIL

COMPTON ENGINEERING, INC.
ENGINEERING, SURVEYING & ENVIRONMENTAL SERVICES
PASCAGOULA • BILOXI • BAY ST. LOUIS
228-762-3970 228-432-2133 228-467-2770
www.comptonengineering.com



**CITY OF PASS CHRISTIAN
SMALL CRAFT HARBOR EAST HARBOR REPAIRS**

ACCESS BRIDGE REPAIR PLAN & DETAILS

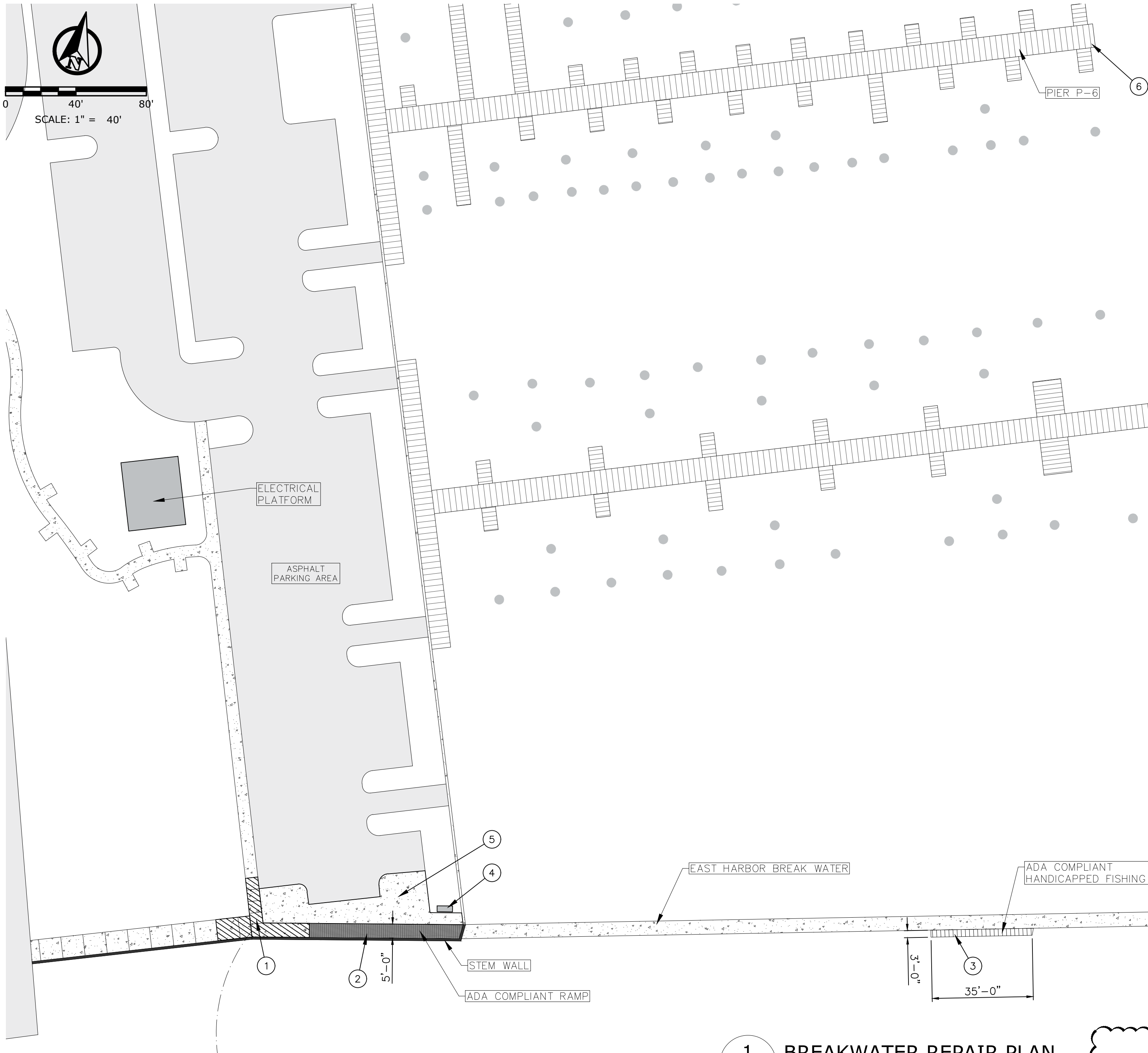
[illegible]

C3.0

[illegible]

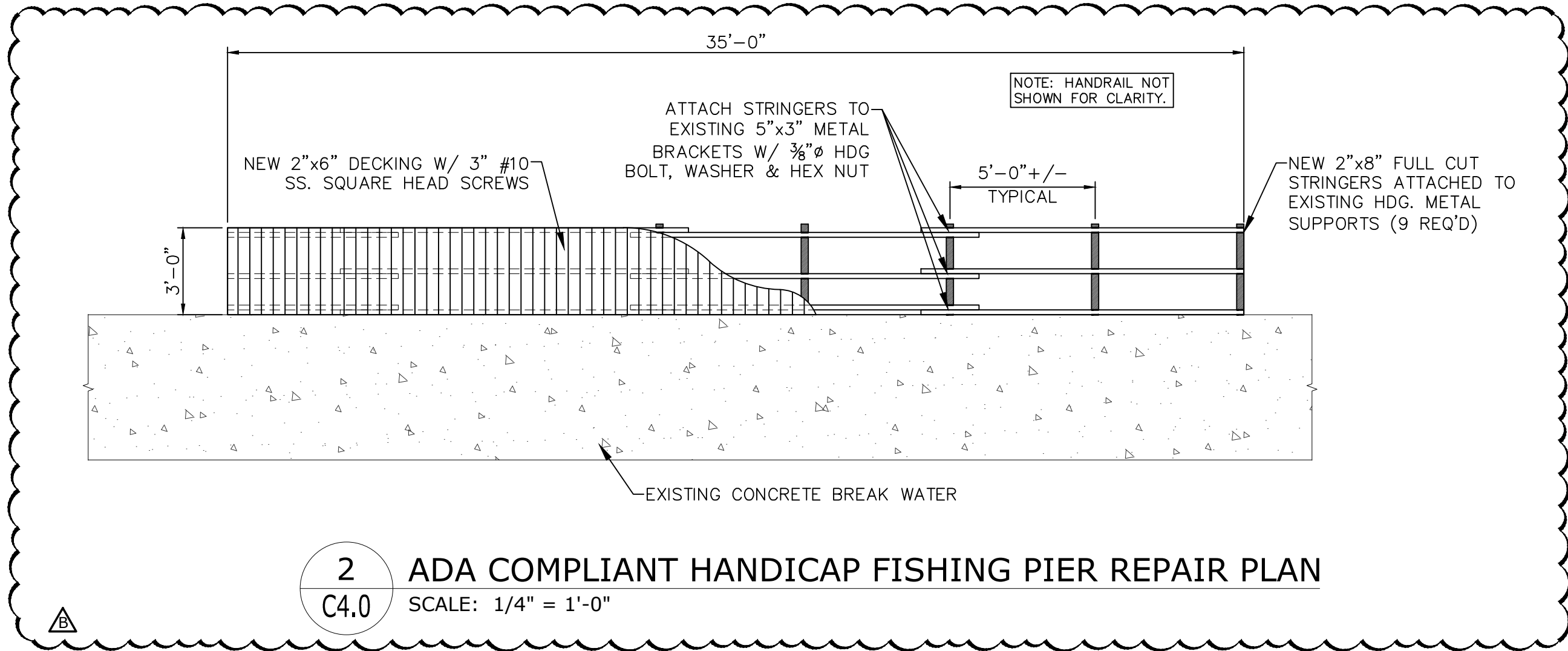
S:\BAY ST LOUIS\PROJECTS\2021\21-018 - City of Pass Christian - City of Pass Christian - PC Small Craft Harbor\21-018-001 - East Harbor Repair\Design\Current Design\Concept Design\C4.0.c4.1.dwg, 9/28/2021 1:14:17 PM, lumpp, DWG To PDF.plt

PROPRIETARY RIGHTS CLAUSE: INFORMATION AND DATA CONTAINED ON THIS DRAWING IS CONFIDENTIAL. IF GIVEN TO AN ENTITY NOT HAVING A CONTRACTUAL RELATIONSHIP WITH THE ENGINEER, THE INFORMATION SHALL NOT BE USED WITHOUT PRIOR WRITTEN PERMISSION. THIS LEGEND SHALL BE MARKED ON ANY REPRODUCTIONS HEREOF IN WHOLE OR IN PART. COMPTON ENGINEERING, INC. © COPYRIGHT 1998



- LEGEND**
- 1 → REMOVE AND REPLACE 35 SY. CONCRETE SLOPE PAVING AND SIDEWALK. PROVIDE SELECT SANDY BACKFILL AS REQUIRED TO ACHIEVE DESIRED ELEVATIONS.
 - 2 → CONTRACTOR TO LEVEL EXISTING ADA COMPLIANT HANDICAPPED ACCESS RAMP TO THE ELEVATION OF THE TOP OF EXISTING STEM WALL. POUR INDEPENDENT CONCRETE FOUNDATION TO SUPPORT RAMP COLUMNS (5 REQ'D). (SEE 2/C4.1)
 - 3 → REPLACE 2"x8" FULL CUT STRINGERS (2.5# / CFT CCA) AND 2"x6" DECKING (0.23 / CFT CA PRESERVATIVE). FASTEN STRINGERS USING MINIMUM 1/2" HDG BOLTS W/ FLAT WASHERS AND HEX NUTS. (SEE DETAIL 2 THIS SHEET)
 - 4 → PROVIDE AND INSTALL NEW FLUSH GRADE PULL BOX (30"x60"x36") (ARMORCAST TIER 22 OR EQUAL).
 - 5 → REMOVE EXISTING BROKEN SLOPE PAVING AND BACKFILL W/ SELECT SANDY BACKFILL, AS DIRECTED BY ENGINEER.
 - 6 → REMOVE (3) CONCRETE UTILITY CHASE PANELS & REPLACE W/ (3) NEW CONCRETE PANELS.
 - 7 → REMOVE (7) CONCRETE UTILITY CHASE PANELS & REPLACE W/ (7) NEW CONCRETE PANELS.

1 BREAKWATER REPAIR PLAN
C4.0 SCALE: 1" = 30'



COMPTON ENGINEERING, INC.
ENGINEERING, SURVEYING & ENVIRONMENTAL SERVICES
PASCAGOULA • BILOXI • BAY ST. LOUIS
228-762-3970 228-432-2133 228-467-2770
www.comptonengineering.com



CITY OF PASS CHRISTIAN
SMALL CRAFT HARBOR EAST HARBOR REPAIRS
BREAKWATER REPAIR PLAN

SCALE:	AS NOTED
JOB NO.:	221-018.003
DATE:	--
DSGN.:	B. ESCHER
DWG. BY:	B. LADNER
CHK.:	--
APVD.:	--

VERIFY SCALES BAR IS ONE INCH ON THIS DRAWING. IF NOTAL ELEVATION OR SCALE IS SHOWN, SCALES ARE AS SHOWN.	1"
	0

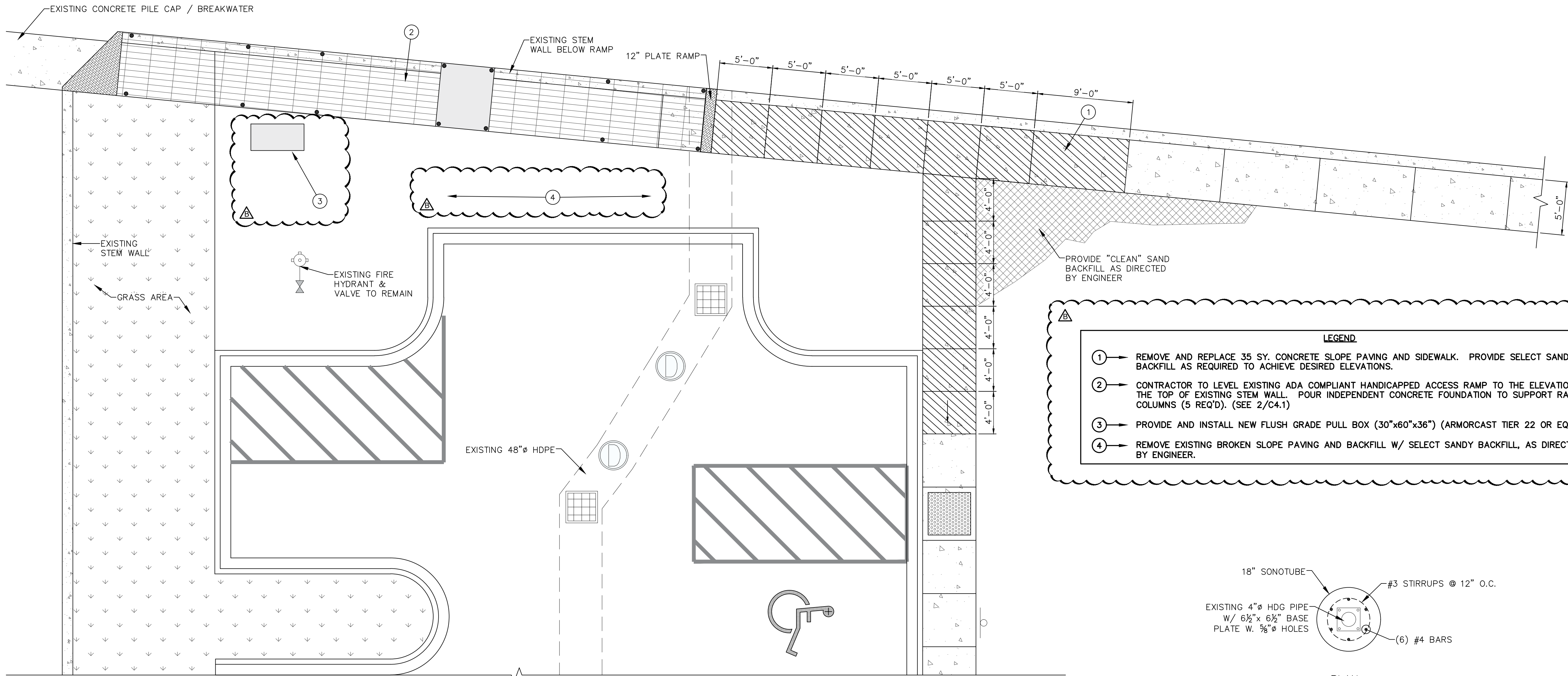
C4.0

Rev. No.
B

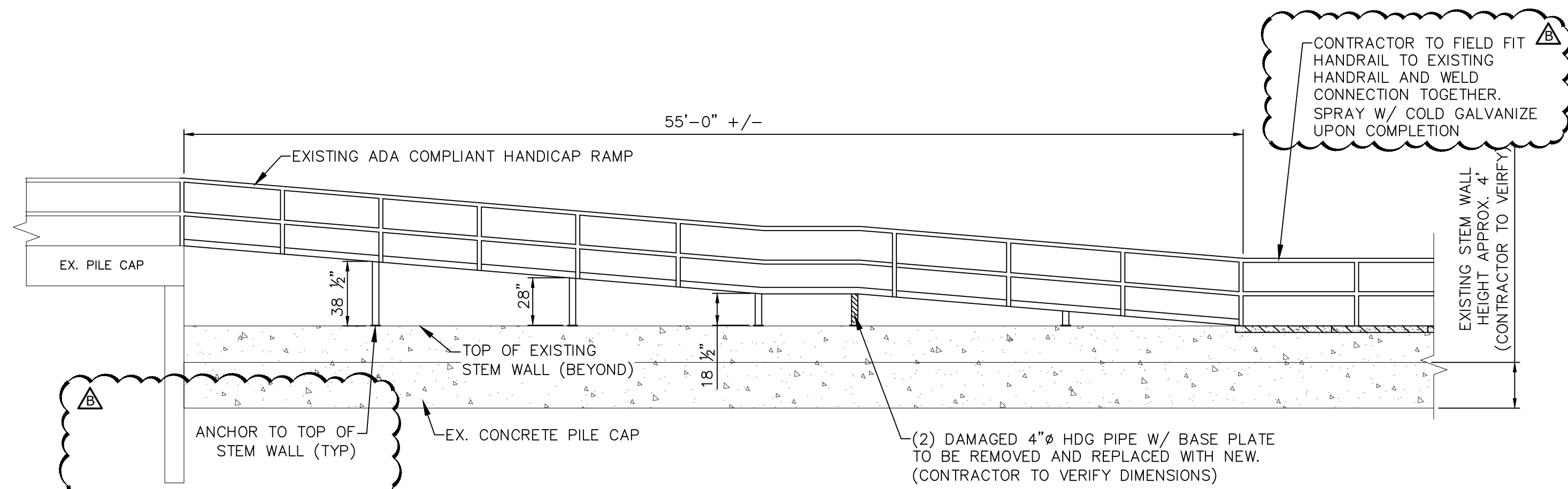
8-20-21	ISSUED FOR BID	TP	BE	9-29-21	ISSUED FOR ADDENDUM #1	TP	BE												
DATE	DESCRIPTION	BY	APVD	DATE	DESCRIPTION	BY	APVD	DATE	DESCRIPTION	BY	APVD	DATE	DESCRIPTION	BY	APVD	DATE	DESCRIPTION	BY	APVD

S:\BAY ST LOUIS\PROJECTS\2021\21-018 - City of Pass Christian - PC Small Craft Harbor Repair\Draws\Current Design\Concept Design\C4.0.c4.1.dwg, 9/28/2021, 11:11:15 AM, lommyp, DWG To PDF.pc3

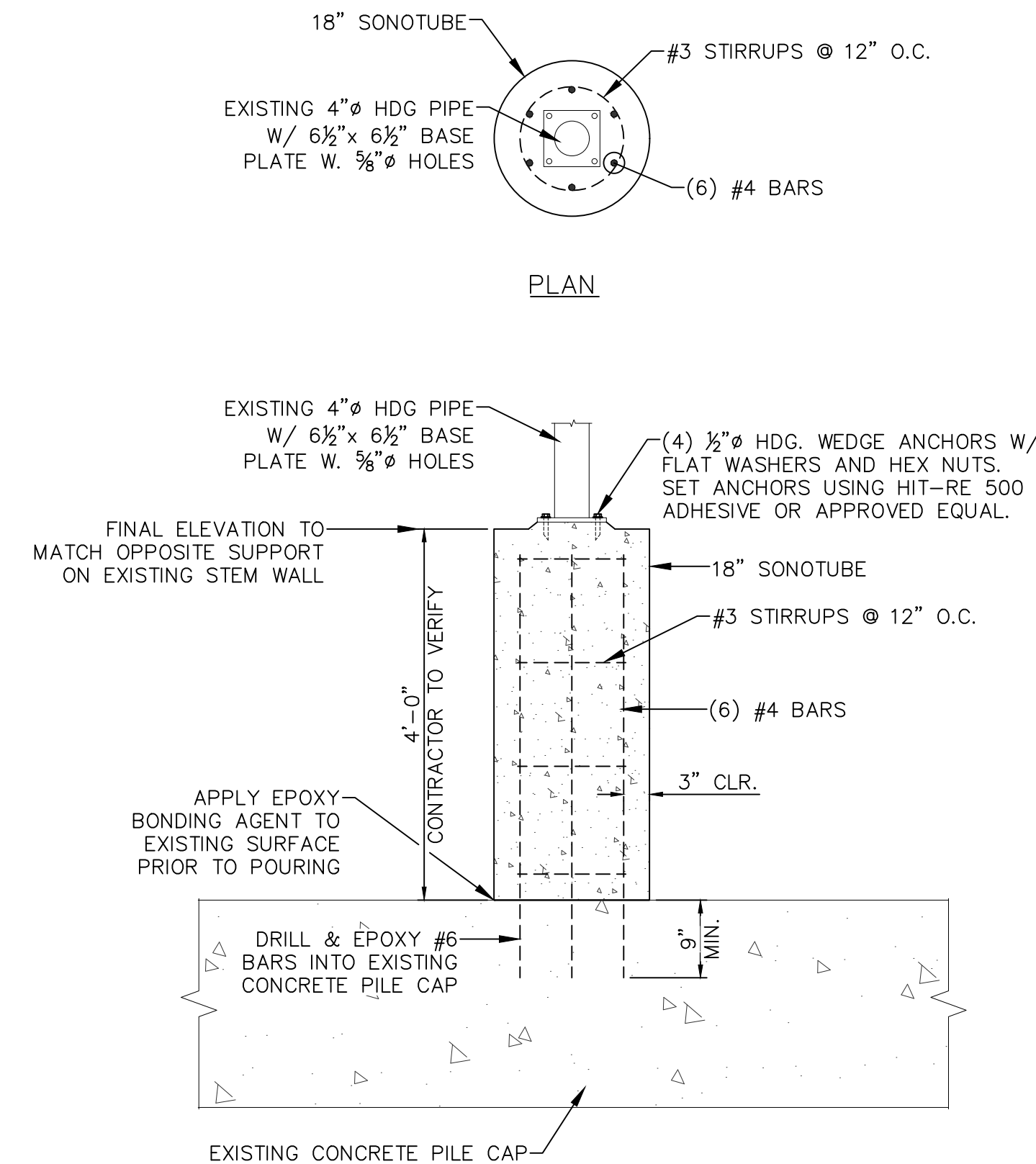
PROPRIETARY RIGHTS CLAUSE: INFORMATION AND DATA CONTAINED ON THIS DRAWING IS CONFIDENTIAL. IF GIVEN TO AN ENTITY NOT HAVING A CONTRACTUAL RELATIONSHIP WITH THE ENGINEER, THE INFORMATION SHALL NOT BE USED WITHOUT PRIOR WRITTEN PERMISSION. THIS LEGEND SHALL BE MARKED ON ANY REPRODUCTIONS HEREOF IN WHOLE OR IN PART. COMPTON ENGINEERING, INC. © COPYRIGHT 1998



1 ENLARGED BREAKWATER REPAIR PLAN
SCALE: 3/16" = 1'-0"



3 ADA COMPLIANT HANDICAP RAMP SECTION
SCALE: 3/16" = 1'-0"



3 HANDICAP RAMP SONOTUBE DETAIL
SCALE: 3/4" = 1'-0"

COMPTON ENGINEERING, INC.
ENGINEERING, SURVEYING & ENVIRONMENTAL SERVICES
PASCAGOULA • BILOXI • BAY ST. LOUIS
228-762-3970 228-432-2133 228-467-2770
www.comptonengineering.com



CITY OF PASS CHRISTIAN
SMALL CRAFT HARBOR EAST HARBOR REPAIRS
BID SCHEDULE 1
ENLARGED BREAKWATER REPAIR PLAN & DETAILS

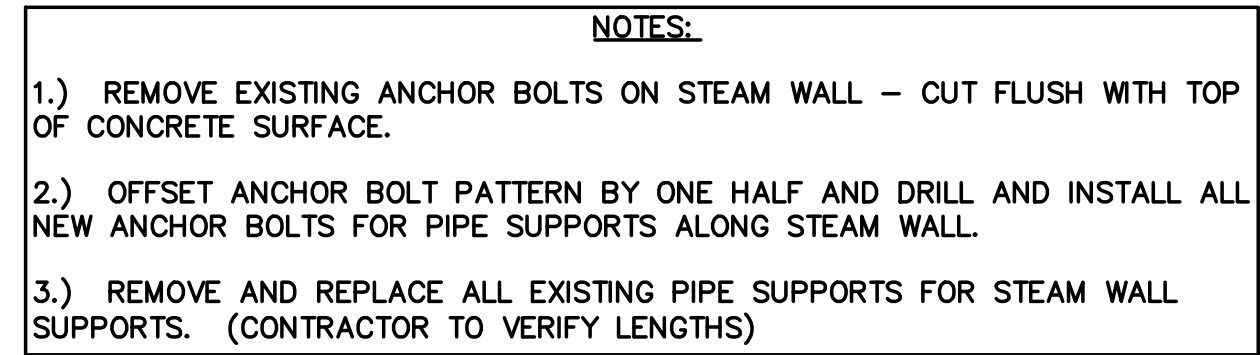
SCALE:	AS NOTED
JOB NO.:	221-018.003
DATE:	--
DSGN.:	B. ESCHER
DWG. BY:	B. LADNER
CHK.:	--
APVD.:	--

VERIFY SCALES
BAR IS ONE INCH ON
IF NOT INDICATED
OTHERWISE, SCALE
IS AS SHOWN

C4.1

Rev. No.
B

8-20-21	ISSUED FOR BID	TP	BE	9-29-21	ISSUED FOR ADDENDUM #1	TP	BE												
DATE	DESCRIPTION	BY	APVD	DATE	DESCRIPTION	BY	APVD	DATE	DESCRIPTION	BY	APVD	DATE	DESCRIPTION	BY	APVD	DATE	DESCRIPTION	BY	APVD



Rev. No.
A





REFER TO REPORT OF GEOTECHNICAL CONSULTING SERVICES
DATED APRIL 22, 2011 BY THOMPSON ENGINEERING, INC.
FOR ADDITIONAL SITE WORK REQUIREMENTS.



NOTES:

1. CURB AND GUTTER TO BE CONSTRUCTED IN 10 FOOT LENGTHS.
2. 1/2 INCH EXPANSION JOINTS SHALL BE PROVIDED AT INTERVALS NOT TO EXCEED 50 FEET AT THE ENDS AND MID-POINT OF RETURNS, AND AT ANY POINT WHERE THE NEW CURB AND GUTTER ABUTS ANY OTHER CONCRETE OR RIGID STRUCTURES.
3. 5 FOOT LONG TRANSITIONS SHALL BE PROVIDED BETWEEN NORMAL GUTTER AND PITCHED GUTTER UNLESS OTHERWISE NOTED.
4. 3000 PSI CONCRETE MINIMUM.



SIDEWALK THICKENED EDGE DETAIL



Rev. No
A

ENGINEERING, SURVEYING & ENVIRONMENTAL SERVICES
PASCAGOULA • BILOXI • BAY ST. LOUIS
228-762-3970 228-432-2133 228-467-2770
www.comptonengineering.com



NOTES, PAVEMENT & CURBING DETAILS

SCALE:	AS NOTED
JOB NO.:	221-018.003
DATE:	--
DSGN.:	B. ESCHER
DWG. BY:	B. LADNER
CHK.:	--
APVD.:	

VERIFY SCALES
BAR IS ONE INCH ON ORIGINAL DRAWING. IF NOT ONE INCH ON THIS SHEET ADJUST SCALES ACCORDINGLY.

C4.4