

Date: February 7, 2022

To: Plan Holders

Company:

Project No.:

Phone No.:

Fax No.:

From: Poplarville High School - Poplarville School District

Subject: ADDENDUM NO. 2
ARTIFICIAL TURF PROJECT-
POPLARVILLE SCHOOL DISTRICT
Poplarville, Mississippi

Attached is Addendum No. 2 for the above referenced project.

**Plan Holders are reminded that this Addendum must be acknowledged on
Page 00300-6 of the Bidders Proposal.**

Please acknowledge receipt of this Addendum by signing in the space provided below and return this page by facsimile to: Neel-Schaffer, Inc., Fax Number: (601) 545-2267, or e-mail your acknowledgment to jennifer.nobles@neel-schaffer.com before 2:00 P.M., Monday, February 7, 2022.

NAME: _____ DATE: _____ TIME: _____

COMPANY (Please Print): _____

You should receive (11) pages **including this cover sheet**. Please notify us if the message is incomplete or unclear. Thank you.

SPECIFICATIONS

1. Replace BID PROPOSAL form in its entirety and replace with attached **BID PROPOSAL** form. **Note addition and/or revisions to highlighted pay items.** (6 PAGES)
2. Replace SPECIAL PROVISION 907-242-1A, INFILLED SYNTHETIC TURF - FOOTBALL/SOCCER (page 1) with attached **907-242-1A INFILLED SYNTHETIC TURF - FOOTBALL/SOCCER (page 1).** **Note addition of highlighted text “No Organic Infills Are Allowed”** (1 PAGE)
3. Replace SPECIAL PROVISION 907-242-1B, INFILLED SYNTHETIC TURF – BASEBALL/SOFTBALL (page 1) with attached **907-242-1B INFILLED SYNTHETIC TURF – BASEBALL/SOFTBALL (page 1).** **Note addition of highlighted text “No Organic Infills Are Allowed”** (1 PAGE)

PLANS

4. Replace DRAWING 13 (WKG-3 / DRAINAGE PLAN SOFTBALL) with attached **DRAWING 13 (WKG-3 / DRAINAGE PLAN SOFTBALL).** (1 PAGE). **Note addition of detail.**

Prices Bid and Approximate Quantities - Base Bid

Pay Item	Pay Item Description	Unit	Estimated Quantity	Unit Price	Price Extension
202-B2	REMOVAL OF CONCRETE SIDEWALK, ALL DEPTHS	SY	590		
202-B3	REMOVE & CAP EXISTING 4" WATER LINE	LF	650		
202-B4	REMOVAL OF EXISTING IRRIGATION (FOOTBALL/SOCCER)	LS	1	XXXX	
202-B5	REMOVAL OF EXISTING IRRIGATION (BASEBALL INFIELD ONLY)	LS	1	XXXX	
202-B7	REMOVAL & RESET HOME PLATE (2), BASES (6) & FOUL POLES (2 – SOFTBALL ONLY)	LS	1	XXXX	
203-A	UNCLASSIFIED EXCAVATION, LVM, AH	CY	500		
203-G	EXCESS EXCAVATION, LVM, AH	CY	5600		
907-603-PP002	30" PREFORMED, POLYETHYLENE DRAINAGE CATCH BASIN	EA	1		
211-B1	TOPSOIL FOR SLOPE TREATMENT, CONTRACTOR FURNISHED	CY	20		
216-A1	SOLID SODDING, HYBRID BERMUDA	SY	120		
234-A	TEMPORARY SILT FENCE	LF	1570		
237-A	WATTLES, 20"	LF	200		
246-B	ROCKBAGS	EA	200		

907-242-PP1	ARTIFICIAL TURF, PER PLANS	SF	149,000		
907-258-A1	8' GOOSENECK HIGH SCHOOL GOALPOST W/ GROUND SLEEVES	EA	2		
907-258-A2	STEEL POLE 40' H X 40' W SAFETY NETTING SYSTEM (FOOTBALL FIELD)	EA	1		
907-258-A3	BULLPEN PLATE (BASEBALL)	EA	4		
907-258-A4	BULLPEN PLATE (SOFTBALL)	EA	4		
907-258-A5	ACCESS FRAMES W/ SUPPORT TUBES FOR PITCHING RUBBER (SOFTBALL)	EA	5		
907-282-A1	IRRIGATION ADJUSTMENTS (BASEBALL OUTFIELD)	LS	1	XXXX	
907-282-A2	IRRIGATION ADJUSTMENTS (SOFTBALL OUTFIELD)	LS	1	XXXX	
907-282-A3	WATER LINE & SPIGOT	LF	170		
907-607-PP1A	BLACK VINYL CHAIN LINK FENCE, 4' H	LF	1175		
907-607-PP1B	BLACK VINYL CHAIN LINK FENCE, 5'H	LF	70		
907-607-PP2	BLACK VINYL CHAIN LINK FENCE, DOUBLE GATE (VEHICULAR)	EA	1		
907-607-PP3	BLACK VINYL CHAIN LINK FENCE, DOUBLE GATE (PEDESTRIAN)	EA	3		
608-B	CONCRETE SIDEWALK, 4" REINFORCED	SY	970		
618-A	MAINTENANCE OF TRAFFIC	LS	1	XXXX	
620-A	MOBILIZATION	LS	1	XXXX	
699-A	ROADWAY CONSTRUCTION STAKING	LS	1	XXXX	

682-A1009	BRANCH CIRCUIT WIRE, AWG #10, 3 CONDUCTOR	LF	100		
682-A1010	BRANCH CIRCUIT WIRE, JACK OR BORED AWG #10, 3 CONDUCTOR	LF	155		
682-D003PP	UNDERGROUND PULL BOX WITH MOUNTED RECEPTACLE	EA	2		
682-F001PP1	PANEL MODIFICATION AND WALL PENETRATION	EA	1		
682-F001PP2	INSTALL NEW PANEL ON EXISTING ELECTRICAL STRUCTURE	EA	1		
815-A	LOOSE RIP RAP, SIZE 100#	SY	200		
815-E	GEOTEXTILE UNDER RIP RAP, TYPE V, NON-WOVEN	SY	200		
TOTAL BASE BID \$					

Prices Bid and Approximate Quantities - Additive Alternate No. 1					
Pay Item	Pay Item Description	Unit	Estimated Quantity	Unit Price	Price Extension
L00079	BRICK COLUMN, 24" SQ	EA	8		
L00080	DECORATIVE STEEL FENCE, 4' H	LF	790		
TOTAL ADDITIVE ALTERNATE NO. 1 BID \$					

Prices Bid and Approximate Quantities - Additive Alternate No. 2					
Pay item	Pay Item Description	Unit	Estimated Quantity	Unit Price	Price Extension
202-B8	REMOVAL OF EXISTING IRRIGATION (BASEBALL OUTFIELD)	LS	1	XXXX	
907-282-A4	IRRIGATION SYSTEM (BASEBALL OUTFIELD)	LS	1	XXXX	
211-B2	TOPSOIL FOR SLOPE TREATMENT, CONTRACTOR FURNISHED	CY	10		
216-A2	SOLID SODDING, HYBRID BERMUDA	SY	20		
TOTAL ADDITIVE ALTERNATE NO. 2 BID \$					

Prices Bid and Approximate Quantities - Additive Alternate No. 3					
Pay item	Pay Item Description	Unit	Estimated Quantity	Unit Price	Price Extension
907-242-PP2	BASEBALL FIELD TEXT "HORNETS", PER PLANS	LS	1	XXXX	
TOTAL ADDITIVE ALTERNATE NO. 3 BID \$					

Prices Bid and Approximate Quantities - Additive Alternate No. 4					
Pay Item	Pay Item Description	Unit	Estimated Quantity	Unit Price	Price Extension
907-242-PP1	EQUIPMENT, SWEEPER	LS	1	XXXX	
TOTAL ADDITIVE ALTERNATE NO. 4 BID \$					

Prices Bid and Approximate Quantities - Additive Alternate No. 5					
Pay Item	Pay Item Description	Unit	Estimated Quantity	Unit Price	Price Extension
L00081	BRICK VENEER, PLAY CLOCK POSTS	EA	4		
L00082	BRICK VENEER, SCOREBOARD POSTS	EA	3		
TOTAL ADDITIVE ALTERNATE NO. 5 BID \$					

Prices Bid and Approximate Quantities - Additive Alternate No. 6					
Pay Item	Pay Item Description	Unit	Estimated Quantity	Unit Price	Price Extension
307-D	LIME	TON	450		
TOTAL ADDITIVE ALTERNATE NO. 4 BID \$					

Prices Bid and Approximate Quantities - Additive Alternate No. 7					
Pay Item	Pay Item Description	Unit	Estimated Quantity	Unit Price	Price Extension
307-C	12" SOIL-LIME-WATER MIXING, CLASS C	SY	16560		
TOTAL ADDITIVE ALTERNATE NO. 4 BID \$					

THE BIDDER'S TOTAL ABOVE IS HIS TOTAL BID BASED ON HIS UNIT PRICES AND LUMP SUM PRICES AND THE ESTIMATED QUANTITIES. THIS FIGURE IS FOR INFORMATION ONLY AT THE TIME OF OPENING BIDS. THE OWNER WILL MAKE THE BID TABULATION FROM THE UNIT PRICES AND LUMP SUM PRICES BID. IF THERE IS AN ERROR IN THE TOTAL BY THE BIDDER, IT SHALL BE CHANGED AS ONLY THE UNIT PRICES AND LUMP SUM PRICES SHALL GOVERN.

NOTE: FAILURE OF BIDDER TO INCLUDE PRICES FOR THE ALTERNATE BID ITEMS MAY RENDER HIS PROPOSAL NON-RESPONSIVE.
NOTE: Bids shall include sales tax and all other applicable taxes and fees.

SPECIAL PROVISION 907-242-1A

INFILLED SYNTHETIC TURF (FOOTBALL/SOCCER FIELD) SLIT-FILM/MONOFILAMENT w/COOLING TECHNOLOGY FIELDTURF VERTEX PRIME (BASIS OF DESIGN)

PART 1 - GENERAL

1.1 SUMMARY

- A. Furnish all labor, materials, tools and equipment necessary to install slit-film/monofilament artificial grass as indicated on the plans and as specified herein; including components and accessories required for a complete installation, including but not limited to
1. Acceptance of prepared sub-base.
 2. Coordination with related trades to ensure a complete, integrated, and timely installation: Aggregate base course, sub-base material (tested for permeability), grading and compacting, piping and drain components (when required); as provided under its respective trade section.
- B. PRE-APPROVED PRODUCTS (Football/Soccer Turf & Infill)
1. FieldTurf – Vertex Prime Turf - Coolplay Infill (BASIS OF DESIGN)
 2. Hellas – Fusion XP2 Turf - Sand/Rubber with Ecotherm Cap Infill
 3. Astroturf – Rootzone 3D3 Blend Turf – Sand/Rubber/Zio Mix Infill
 4. Or Approved Equal – Approved Equal Submissions must be greater than or equal to the Specifications Provided within this section, as determined by Project Landscape Architect & Owner. Is it the responsibility of the bidder to prove that the product substitution is equal or greater than the (Basis of Design) product.
 5. At time of Bid Opening, bidder submitted characteristics & specifications related to Pre-Approved Products must match typical manufacturer recommendations in recognition that each individual product is different. The products must maintain the high standards of quality and major characteristics that are desired by the client. This will be determined by the Project Landscape Architect & Owner.
 6. Infill Products for football/soccer field MUST NOT contain coconut or walnut. **No organic infills are allowed.**
 7. No Shock Pad
- C. *** All Product submittals are required at the time of bidding. Bidders who do not provide the required product submittals may have their bid determined to be non-responsive. Additionally, the Artificial Turf Submittal Sheet, located after this section is required to be filled out and submitted at the time of bidding. ***

1.2 RELATED SECTIONS

- A. Section 00 0000 - Site Preparation
- B. Section 31 23 00 – Excavation and Fill
- C. Section 31 23 16 – Excavation
- D. Section Series 31 23 23 - Fill
- E. Section 31 23 23.13 - Backfill

SPECIAL PROVISION 907-242-1B

INFILLED SYNTHETIC TURF (BASEBALL/SOFTBALL FIELDS) FIELDTURF DOUBLEPLAY NATURAL (BASIS OF DESIGN)

PART 1 - GENERAL

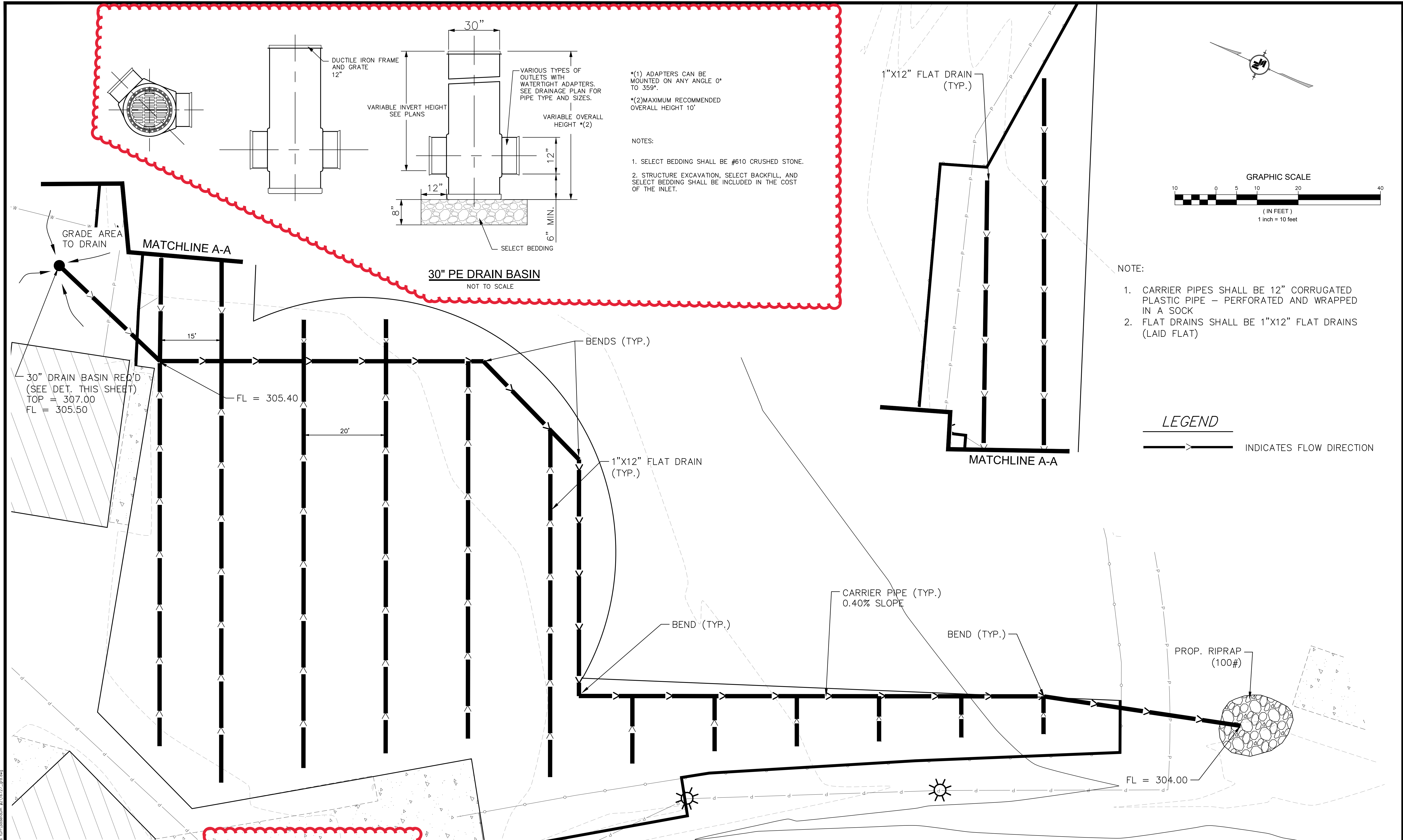
1.1 SUMMARY


- A. Furnish all labor, materials, tools and equipment necessary to install artificial grass as indicated on the plans and as specified herein; including components and accessories required for a complete installation, including but not limited to
 - 1. Acceptance of prepared sub-base.
 - 2. Coordination with related trades to ensure a complete, integrated, and timely installation: Aggregate base course, sub-base material (tested for permeability), grading and compacting, piping and drain components (when required); as provided under its respective trade section.
- B. PRE-APPROVED PRODUCTS (Baseball/Softball Turf & Infill)
 - 1. FieldTurf- Double Play Natural Turf – Double Play Natural Infill (BASIS OF DESIGN)
 - 2. Hellas- Major Play Matrix Turf – Sand/Rubber mix Infill
 - 3. Astroturf- Diamond Series OPS Turf System – Sand/Rubber Mix Infill
 - 4. Or Approved Equal – Approved Equal Submissions must be greater than or equal to the Specifications Provided within this section, as determined by Project Landscape Architect & Owner. Is it the responsibility of the bidder to prove that the product substitution is equal or greater than the (Basis of Design) product.
 - 5. At time of Bid Opening, bidder submitted characteristics & specifications related to Pre-Approved Products must match typical manufacturer recommendations in recognition that each individual product is different. The products must maintain the high standards of quality and major characteristics that are desired by the client. This will be determined by the Project Landscape Architect & Owner.
 - 6. Infill Products for baseball/softball field MUST NOT contain coconut or walnut. **No organic infills are allowed.**
 - 7. No Shock Pad

***** All Product submittals are required at the time of bidding. Bidders who do not provide the required product submittals may have their bid determined to be non-responsive. Additionally, the Artificial Turf Submittal Sheet, located after this section is required to be filled out and submitted at the time of bidding. *****

1.2 RELATED SECTIONS

- A. Section 00 0000 - Site Preparation
- B. Section 31 23 00 – Excavation and Fill
- C. Section 31 23 16 – Excavation
- D. Section Series 31 23 23 - Fill



NOTICE TO DRAWING HOLDER NEEL—SCHAFER, INC., HEREINAFTER REFERRED TO AS THE ENGINEER HAS PREPARED AND FURNISHED THIS DRAWING TO THE OWNER FOR USE ON THIS PROJECT ONLY. THIS DRAWING SHOULD NOT BE USED ON EXTENSIONS OF THIS PROJECT OR ON ANY OTHER PROJECT. ANY REUSE OF THIS DRAWING, WITHOUT WRITTEN VERIFICATION OR ADAPTATION BY THE ENGINEER, SHALL BE AT THE REUSER'S SOLE RISK AND THE REUSER SHALL INDEMNIFY AND HOLD HARMLESS THE ENGINEER FROM ALL CLAIMS, DAMAGES, LOSSES AND EXPENSES, INCLUDING ATTORNEY'S FEES ARISING OUT OF OR RESULTING THEREFROM.				REVISIONS				DRAWING INFORMATION				<div>ARTIFICIAL TURF PROJECT</div> <div>POPLARVILLE SCHOOL DISTRICT POPLARVILLE, MS</div>				<div>NEEL-SCHAFER <i>Solutions you can build upon</i></div>				DRAINAGE PLAN SOFTBALL			
NO.	DATE	BY	DESCRIPTION	I-S PROJECT NO.: 16727.000																			
1	2-7-2022	DAL	DETAIL ADDED PER ADDENDUM NO. 2	FILENAME: 16727_GRD.DWG																			
								SCALE: 1" = 10'															
								SURVEYED BY: O'NEAL-BOND ENG.															
								DSGN: DAL DATE: 11/2021															
								DRWN: DAL DATE: 11/2021															
								CHKD: RPB DATE: 1/2022															
								QA/QC: RPB DATE: 1/2022								WORKING NUMBER: WKG-3							
												DRAWING NUMBER: 13											

2/7/2022 12:07 AM s:\16600\16727 and its tur\addendum.dwg