

# accent

seating for behavioral health



# accent bh

The Accent Heavy-Duty Chair for Behavioral Health specializes in versatility. Accent suits common rooms and dining areas, and its compact footprint makes it ideal for patient room seating. The chair is available with arms or armless and in three seat widths. It rests on a sturdy H-base.

## Features

- Limited Lifetime Warranty
- 14-gauge powdercoated steel "H" frame
- All fasteners are tamper-resistant
- Sled base enables frame to be bolted to floor
- Steel seat pan conceals upholstery staples and adds weight
- Available in 3 seat widths: 18.5", 22" and 26"
- Nylon glides are non-removable and protect floors from damage

## Options

- Custom frame finishes
- Also available with arms
- Contrasting fabrics
- Bolt-to-floor brackets
- CAL TB 133 Compliance
- Moisture Barrier



## features



Tamper-resistant fasteners



Non-removable glides are non-marring to protect floors from damage



Steel seat pan increases weight and durability



All upholstery staples are concealed

## Statement of Line



Heavy-Duty Chair  
18.5" seat width



Heavy-Duty Chair, with arms  
18.5" seat width



Heavy-Duty Chair, Mid-size  
22" seat width



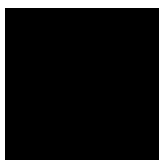
Heavy-Duty Chair, Bariatric  
26" seat width

## Dimensions:

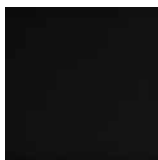


## Powdercoat finish selections:

*\*Custom frame finishes available on request*



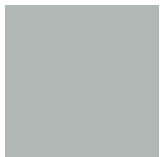
Smooth Black



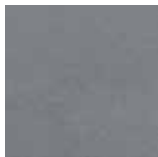
Textured Black



Textured Silver



Smooth Silver



Gunmetal



Metallic Beige

