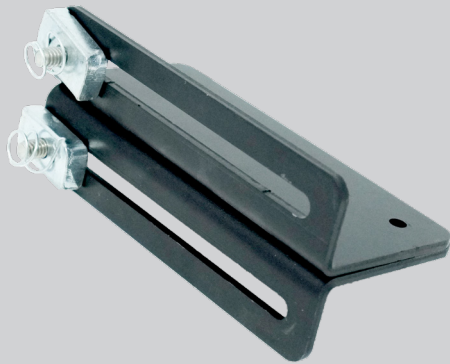
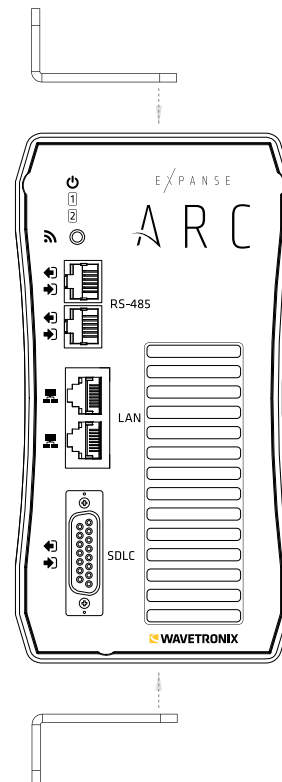
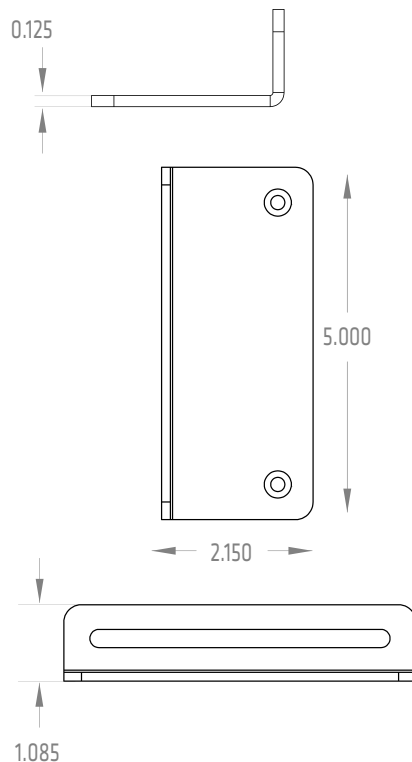


## Arc side-mount bracket for use in a NEMA cabinet

The Arc NEMA Side-mount Bracket makes attaching the Arc to the inside of a NEMA cabinet easy to do. Whether attaching the Arc to the channels on the left or right side of a standard NEMA cabinet, this bracket provides a convenient spot for easy Arc configuration.



- Installs in standard NEMA cabinet
- Can be attached to the left or right side of the cabinet
- Two plates allow for secure cabinet installation
- To avoid any movement of the Arc, the holes in the two plates let you securely anchor the Arc to the bracket
- Ships with spring nuts for easy and convenient installation into the channels inside the cabinet
- Powder coated for longer life
- Bracket is made of sturdy 5052 aluminum that won't bend, warp, or twist when installed



## Arc NEMA Side-mount Bracket technical specifications

### Physical properties

- Dimensions: 2.150 in. × 5.00 in. × 1.085 in. (5.46 cm × 12.7 × 2.75 cm)
- Thickness: 0.08 in. (0.3175 cm)
- Material: powder coated 5052 aluminum
- 4 holes (2 per plate) allow bracket to be attached to an Arc
- Ships with the following hardware required for installation:
  - 2 spring nuts
  - 4 Phillips undercut flat head screws

### Ordering information

Arc NEMA Side-mount Bracket  
**102-0485**

### Contact us

801.734.7200  
sales@wavetronix.com  
www.wavetronix.com