

John Deere 6R Utility Tractors

Premium Performance



JOHN DEERE



Find the Solution for Your Operation

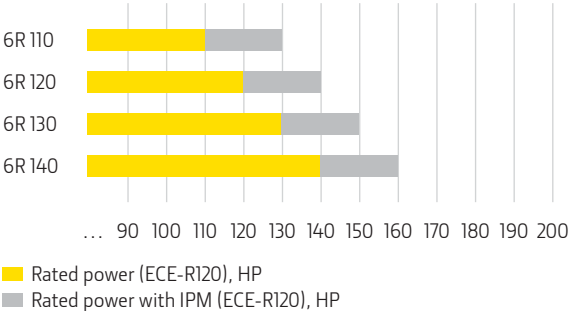
6R 110, 6R 120, 6R 130, 6R 140 110–140 HP

John Deere 6R 110–140 Tractors are nimble, making them perfect for loader work and in the hay field. These tractors feature Infinitely Variable Transmission (IVT™) in base and AutoQuad™ transmission available as an option. You'll also get Intelligent Power Management (IPM), 1000E PTO, multiple loader offerings and a reversible fan.



6200 kg (3,668 lb)**

Engine Performance



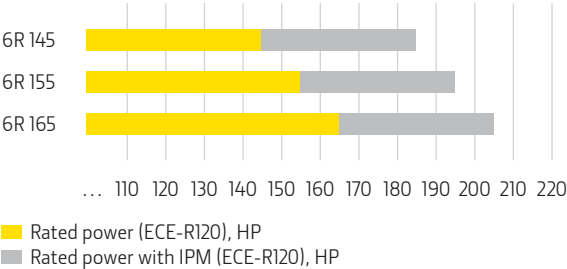
6R 145, 6R 155, 6R 165 145–165 HP

John Deere 6R 145–165 Tractors offer more capacity and power*, along with a longer wheelbase. These tractors now feature IPM, 1000E PTO, multiple transmission options and loader offerings, as well as a reversible fan.



7100 kg (15,653 lb)**

Engine Performance



*Compared to previous models
 **Approximate weight, which may vary depending on configurations

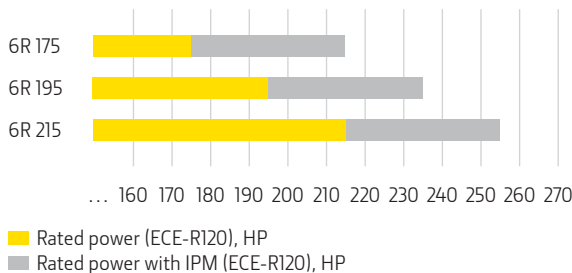
6R 175, 6R 195, 6R 215 175–215 HP

John Deere 6R 175–215 Tractors offer premium power that's perfect for the hay field and can be used in some row crop applications. These tractors feature IPM, a reversible fan and multiple transmission choices.



8500 kg (18,739 lb)**

Engine Performance



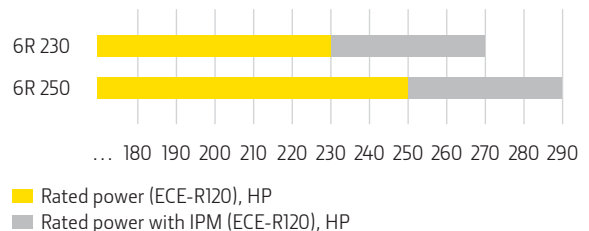
6R 230, 6R 250 230–250 HP

John Deere 6R 230–250 Tractors showcase the largest frame and most power in the 6R offerings. Perfect for transporting heavy loads and work around a dairy, these tractors feature IPM, a reversible fan and IVT transmission.



9300 kg (20,503 lb)**

Engine Performance



Find the 6 Series Tractor for You

6E Tractors 105–135 HP

For simplicity in a powerful and durable tractor, choose one of the three 6E models. The 6E Tractors are perfect for property management or chores on the farm, ranch or worksite.

6M Tractors 110–195 HP

If you need a mid-spec utility tractor that's perfect for baling hay, moving snow, feeding herds or roadside mowing the 6M Tractors are for you. Choose one of the four frames to meet any need on your farm or ranch.

6R Tractors 110–250 HP

For premium performance and comfort the 6R Tractors are for you. Enjoy the most power and comfort in a utility tractor. Perfect for long days in the hay field or moving materials, choose one of the four frames of 6R Tractors.

Intelligent Power Management (IPM)

The John Deere 6R Tractors provide the rated engine hp, but when the engine experiences a load, a 10% power bulge kicks in regardless of conditions. When you need even more power, **Intelligent Power Management (IPM)** engages when certain conditions are met, including:

Transport applications
(≥ 9.3 mph)

Non-stationary PTO applications
(minimum speed of 0.6 mph)

Non-stationary hydraulic applications
(minimum speed of 0.6 mph)

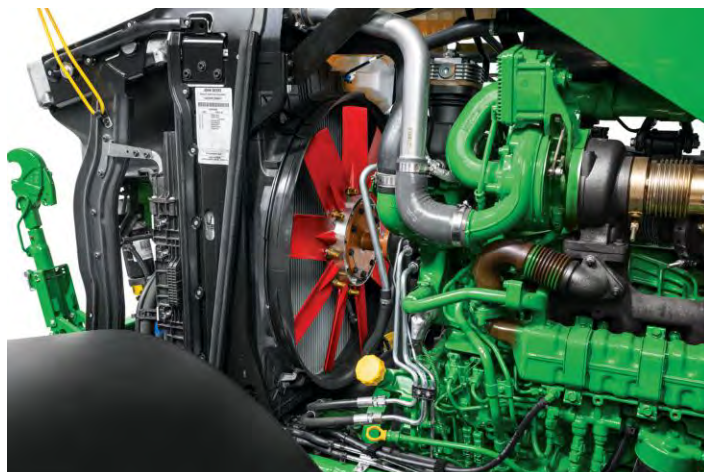
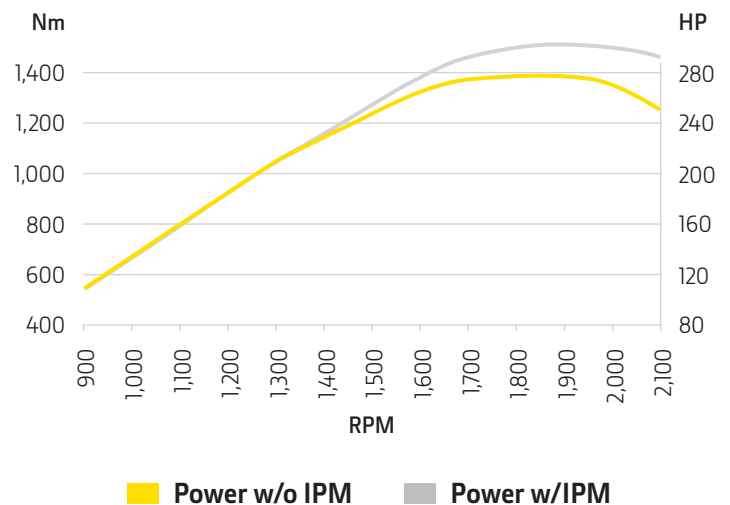
IPM maximizes the tractor's capability to provide an extra 20 hp on 4-cylinder models and up to 40 hp in 6-cylinder models.

When ground speed exceeds 0.6 mph, power is gradually increased, so IPM can provide additional horsepower to PTO applications with high power requirements. IPM also allows for a hydraulic boost, independent of wheel speed, adding

the full amount of measured hydraulic pump power up to boost power curve. Pulling a baler uphill or hauling heavy loads on challenging roads are no problem, thanks to the power boost provided by IPM. In addition, you can minimize fluid consumption and run with efficient power, because the 6R delivers power in a smart and intuitive way.

Intelligent Power Management (IPM)

6R 250



Reversible Fan

Improve engine cooling performance by blowing out chaff in the hay field, from the cab and on-the-go with the flip of a switch thanks to the reversible fan. This can reduce fuel as well as power consumption. The reliability and simplicity of the maintenance-free reversible fan is an added bonus.

Dynamic Weighing

Mix feed and weigh round bales easier, thanks to dynamic weighing. There's no need to purchase a feeder wagon scale when you can weigh on-the-go, without stopping. Be confident and save time by loading the right amount with no guesswork.



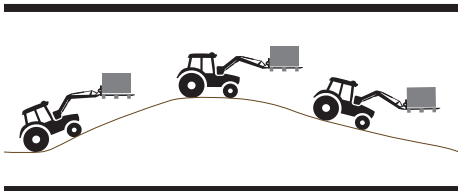
Return to Position

Load goods faster and easier, thanks to the return to position feature that automatically brings the loader to predefined boom and bucket positions.



Level to Horizon

Move materials faster without spilling as the loader compensates for changes in terrain.



Optional Loader Camera

The optional loader camera lets you easily connect any attachments and view the amount of material being moved by clearly seeing the connection area. Handle delicate goods without risk of damage. The loader camera provides visibility to the loader carrier and surroundings through the 6R tractor's display. The hooks of the carrier are visible to facilitate connecting attachments like pallet forks and the fork tips are



in view to assist picking up pallets with ease. The camera position can be adjusted as desired to show the content of the bucket or a side of a snow blade.



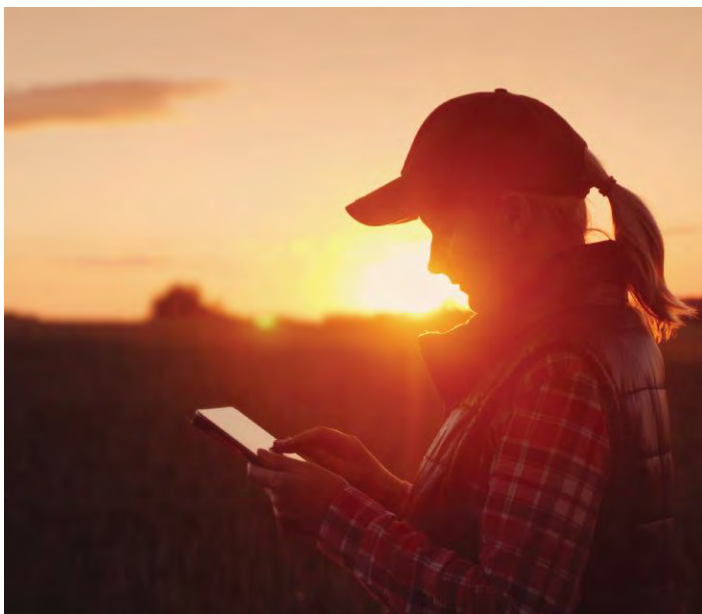
AutoTrac™ Guidance System

Stay on track, reduce overlaps and save on some inputs with AutoTrac™. Available in base for all 6R models, AutoTrac provides premium guidance for all the jobs you need to do.



JDLink™

Stream machine and field data to your John Deere Operations Center account and enable machine-to-machine communication and remote access from your dealer, with your permission.



CommandCenter™ & Operations Center

Save time and reduce operator errors by synchronizing tasks and saving tractor and implement settings in John Deere CommandCenter™ and Operations Center.



Work Planner

Streamline your work setup, letting you get to work more quickly. Plan work from anywhere, with any device, on the web or mobile app with Work Planner, an Operations Center feature. You can also transfer planned work to your equipment and analyze completed work in Operations Center.

Intuitive, Customizable Controls

Reconfigurable buttons let you complete jobs however you like by providing user-friendly intuitive controls. You can set your preferences by customizing:

The **CommandPro™ controller** allows customization of critical functions such as set speeds, hydraulics, hitch lift, and PTO engagement. Operators can easily hook up

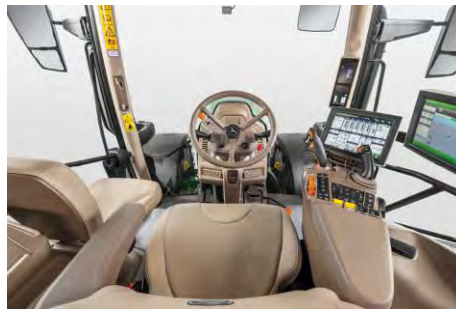
implements or move in tight spaces with inching control. Achieve your desired speed quickly by using the forward and rear detents.

The **reconfigurable electronic loader control** provides precise and quick movements with an integrated reverser capability, ISO auxiliary functions, and optional Return to Position feature.



See the Value in Visibility

Common displays like fuel levels and speed are now on the corner post displays, giving you better visibility and a cleaner cab environment. Your visibility also improves with even greater windshield wiper sweep area on John Deere 6R Tractors.



Ride in Style & Comfort

Enjoy the ride in the premium and stylish cab with optional swiveling, air suspension seats, storage to unclutter your cab and Bluetooth connectivity.



Ease of Use

John Deere 6R Tractors feature common controls from other machines making it easy for operators familiar with John Deere Tractors to use.



Take Control, Easily & Comfortably

All the functions you need are at your fingertips with improved ergonomics, including the fully reconfigurable electronic loader control; now with tractor reverser capability.



Smooth Ride

Enjoy a smooth ride thanks to Triple Link Suspension along with optional cab suspension working in unison to deliver the best ride and drive experience.



Reduced Noise

You'll enjoy a quieter ride, thanks to reduced noise in the premium cab.

Specifications

	6R 110	6R 120	6R 130	6R 140	6R 145
Engine description	John Deere PowerTech™ PSS 4.5L (275 cu in.)				John Deere Power Tech™ PVS 6.8L (415 cu in.)
Rated engine power (97/68EC)*	110 hp (81 kW)	120 hp (88 kW)	130 hp (96 kW)	140 hp (103 kW)	145 hp (108 kW)
Max engine power (97/68EC)*	121 hp (89 kW)	132 hp (97 kW)	143 hp (105 kW)	154 hp (113 kW)	160 hp (117 kW)
Power boost	10 percent				
Intelligent Power Management (IPM)	Up to 20 hp				Up to 40 hp
Rated PTO power (hp SAE)	83 hp (62 kW)	91 hp (68 kW)	101 hp (75 kW)	110 hp (82 kW)	113 hp (84 kW)
PTO torque rise	40 percent				
Engine peak torque @ 1600 rpm	515 Nm (380 lb ft.)	562 Nm (415 lb ft.)	609 Nm (449 lb ft.)	656 Nm (484 lb ft.)	677 Nm (499 lb ft.)
Transmission	Standard: Infinitely variable transmission (IVT™) 40km/h; Optional: IVT 50 km/h, 24-speed AutoQuad™ PLUS ECO 40km/h and 50km/h				Standard: Infinitely variable transmission (IVT™) 40 km/h; Optional: IVT 50 km/h, 24-speed AutoQuad™ PLUS ECO 40 km/h and 50 km/h, 24-Speed Direct Drive 40 km/h and 50 km/h
Hydraulic pump rated output	Standard: 45 cc pump: 114 L/min (30 gpm)		Standard: 45 cc pump: 114 L/min (30 gpm); Optional: 60 cc pump: 155 L/min (41 gpm)		
Rear hitch (SAE designation)	Standard: Category 2/3N: 3600 kg (7,937 lb); Optional: Category 2/3N: 4100 kg (9,039 lb)				Standard: Category 3/3N: 4170 kg (9,193 lb)
Front hitch	Category 3N; Lift Capacity @ hook ends: 3300 kg (7,275 lb)				
Front axle	MFWD: Limited slip TLS: Limited slip TLS with brakes: Full-locking electrohydraulic				
Cab suspension	Optional: Adaptive Hydraulic Cab Suspension Plus (HCS Plus)				
Precision Ag	Standard: AutoTrac Ready™, JDLink hardware™, Service ADVISOR™ Remote				
Wheelbase: MFWD	2580 mm (102 in.)				2765 mm (108.8 in.)
Base machine weight	6000 kg (13,228 lb)	6100 kg (13,448 lb)	6200 kg (13,668 lb)		6900 kg (15,212 lb)

*PS (hp ISO) engine speed (EU 2016/1628)

	6R 155	6R 165	6R 175	6R 195	6R 215	6R 230	6R 250
	John Deere PowerTech™ PVS 6.8L (415 cu in.)					John Deere PowerTech™ PSS 6.8L (415 cu in.)	
	155 hp (108 kW)	165 hp (121 kW)	175 hp (129 kW)	195 hp (143 kW)	215 hp (158 kW)	230 hp (169 kW)	250 hp (184 kW)
	171 hp (125 kW)	182 hp (133 kW)	193 hp (142 kW)	215 hp (158 kW)	237 hp (174 kW)	253 hp (186 kW)	275 hp (202 kW)
	122 hp (91 kW)	129 hp (96 kW)	137 hp (102 kW)	156 hp (116 kW)	174 hp (130 kW)	184 hp (137 kW)	201 hp (150 kW)
	724 Nm (533 lb ft.)	773 Nm (70 lb ft.)	817 Nm (533 lb ft.)	910 Nm (672 lb ft.)	1004 Nm (740 lb ft.)	1074 Nm (92 lb ft.)	1167 Nm (860 lb ft.)
		Standard: Infinitely variable transmission (IVT™) 40 km/h; Optional: IVT 50 km/h	Standard: Infinitely variable transmission (IVT™) 40 km/h; Optional: IVT 50 km/h, 24-speed AutoQuad™ PLUS ECO 40km/h and 50km/h, 24-Speed Direct Drive 40km/h and 50 km/h			Standard: Infinitely variable transmission (IVT™) 40 km/h; Optional: IVT 50 km/h	
			Standard: 60 cc pump: 155 L/min (41 gpm)			Standard: 85 cc pump: 160 L/min (42 gpm)	
			Standard: Category 3/3N: 4300 kg (9,480 lb); Optional: Category 3/3N: 4850 kg (10,690 lb)		Standard: Category 3/3N: 5440 kg (11,990 lb)	Standard: Category 3/3N: 7000 kg (15,432 lb);	
						TLS: Limited slip TLS with brakes: Full-locking electrohydraulic	
			2800 mm (110.2 in.)			2900 mm (114 in.)	
	7100 kg (15,653 lb)		8300 kg (18,298 lb)	8400 kg (18,519 lb)	8500 kg (18,739 lb)	9300 kg (20,503 lb)	