

John Deere Compact and Utility Tractors



Compact and Utility Tractor Implements

Designed to work no matter what the task, John Deere front end loaders are built on proven designs to perfectly match your tractor's performance and versatility. From the 120R Loader that's made for easy mounting and quick access for servicing, to the R and H Series Loaders that offer exceptional visibility, integrated stands for easy parking and cast steel components that add extra muscle, you can be sure that the loader on the business end of your tractor will be an efficiency-boosting asset no matter what you're picking up or putting down.



LOADERS FOR 1 SERIES TRACTORS

D120 for 1023E and 1025R

- 825 lbs (374 kg) lift capacity at pivot point
- 71.2 in (1809 mm) maximum lift height
- Non self-leveling only
- Rigid mounted parking system



LOADERS FOR 2 SERIES TRACTORS

120R for 1023E, 1025R, 2025R

- 754 lbs (342 kg) lift capacity at pivot point
- 72.0 in (1828mm) maximum lift height
- Non self-leveling only
- Quik-Park™ loader mounting system
- Quik-Change attachment carrier

220R for 2032R and 3038R

- 1,120 lbs (508 kg) lift capacity at pivot point
- 85.0-in. (2160mm) maximum lift height
- Quik-Park™ loader mounting system
- Quik-Change attachment carrier
- Optional single point hydraulic connection

LOADERS FOR 3 SERIES TRACTORS

300E for 3D and 3E Series

- 1186 lbs (538 kg) lift capacity at pivot point
- 84-in. (2140 mm) maximum lift height
- Non self-leveling
- Rigid mounted (non-parking)
- Quik-change attachment carrier

300R for 3R Series

- 1360 lbs (617 kg) lift capacity at pivot point
- 90-in. (2284 mm) maximum lift height
- Non self-leveling
- Quik-Park™ loader mounting system
- Quik-change attachment carrier



320R for 3R Series

- 1598 lbs (725 kg) lift capacity at pivot point
- 102-in. (2593 mm) maximum lift height
- Non self-leveling
- Quik-Park™ loader mounting system
- Quik-change attachment carrier
- Optional Skid Steer Carrier

LOADERS FOR 4 SERIES TRACTORS

400E for 4M and 4R OOS Series

- 2396 lbs (1087 kg) lift capacity at pivot point
- 112 in (2850 mm) maximum lift height
- Non self-leveling
- Rigid mounted (non-parking)
- Quik-change attachment carrier

440R MSL for 4R Series

- 2313 lbs (1049 kg) lift capacity at pivot point
- 110 in (2796 mm) maximum lift height
- Mechanical self-leveling
- Quik-Park™ loader mounting system
- Quik-change attachment carrier
- Optional skid steer carrier
- Single-point hydraulic connection
- Loader suspension system for less loader bounce

440R NSL for 4R Series

- 2539 lbs (1152 kg) lift capacity at pivot point
- 110 in (2799 mm) maximum lift height
- Non self-leveling
- Quik-Park™ loader mounting system
- Quik-change attachment carrier
- Optional skid steer carrier

R & H SERIES LOADERS

600R MSL for 5090R, 5100R, 5115R, 5125R, 6110M, 6120M FT4 Tractors; 6030 series and 6030 premium series.

- 4065 lb (1844 kg) lift capacity at pivot point
- 149 in. (3772 mm) maximum lift height
- Mechanical self-leveling

600R NSL for 5090R, 5100R, 5115R, 5125R, 6110M, 6120M FT4 Tractors; 6030 series and 6030 premium series.

- 4980 lb (2259 kg) lift capacity at pivot point
- 149 in. (3772 mm) maximum lift height
- Non self-leveling

620R MSL for 6110M/6110R, 6120M/6120R and 6130M/6130R FT4 Tractors, 6105M/6105R, 6115M/6115R and 6125M/6125R IT4 Tractors, 6030 series and 6030 premium series.

- 4848 lb (2199 kg) lift capacity at pivot point
- 162 in. (4114 mm) maximum lift height
- Mechanical self-leveling
- Single-point hydraulic connection
- Automatic mast latch for tool-free, fast attachment and removal
- Integrated parking stands
- Premium feature options to improve productivity

620R NSL for 6110M/6110R, 6120M/6120R and 6130M/6130R FT4 Tractors, 6105M/6105R, 6115M/6115R and 6125M/6125R IT4 Tractors, 6030 series and 6030 premium series.

- 5346 lb (2425 kg) lift capacity at pivot point
- 159 in. (4035 mm) maximum lift height
- Non self-leveling
- Single-point hydraulic connection
- Automatic mast latch for tool-free, fast attachment and removal
- Integrated parking stands
- Premium feature options to improve productivity

640R MSL for 6110R, 6120R, 6130M/6130R, 6140M/6140R, 6145M/6145R and 6155M/6155R FT4 Tractors; 6105M/6105R, 6115M/6115R 6125M/6125R, 6140M/6140R and 6150M/6150R IT4 Tractors; 7130/7130P and 7230/7230P

- 4733 lb (2147 kg) lift capacity at pivot point
- 169.3 in. (4302 mm) maximum lift height
- Mechanical self-leveling
- Single-point hydraulic connection
- Automatic mast latch for tool-free, fast attachment and removal
- Integrated parking stands
- Premium feature options to improve productivity

640R NSL for 6110R, 6120R, 6130M/6130R, 6140M/6140R, 6145M/6145R and 6155M/6155R FT4 Tractors; 6105M/6105R, 6115M/6115R 6125M/6125R, 6140M/6140R and 6150M/6150R IT4 Tractors; 7130/7130P and 7230/7230P Tractors

- 5463 lb (2478 kg) lift capacity at pivot point
- 169.3 in. (4302 mm) maximum lift height
- Non self-leveling
- Single-point hydraulic connection
- Automatic mast latch for tool-free attachment and removal
- Integrated parking stands
- Premium feature options to improve productivity

660R MSL for 6145M/6145R, 6155M/6155R, 6175M/6175R, 6195M/6195R and 6215R FT4 Tractors, 6140M/6140R, 6150M/6150R, 6170M/6170R, 6190R and 6210R IT4 Tractors, 7030 series and 7030 Premium Series

- 5478 lb (2485 kg) lift capacity at pivot point
- 177 in. (4495 mm) maximum lift height
- Mechanical self-leveling
- Single-point hydraulic connection
- Integrated parking stands
- Automatic mast latch for tool-free, fast attachment and removal

660R NSL for 6145M/6145R, 6155M/6155R, 6175M/6175R, 6195M/6195R and 6215R FT4 Tractors, 6140M/6140R, 6150M/6150R, 6170M/6170R, 6190R and 6210R IT4 Tractors, 7030 series and 7030 Premium Series

- 5889 lb (2671 kg) lift capacity at pivot point
- 176 in. (4470 mm) maximum lift height
- Non self-leveling
- Single-point hydraulic connection
- Integrated parking stands
- Automatic mast latch for tool-free attachment and removal
- Premium feature options to improve productivity

680R MSL for 6175M/6175R, 6195M/6195R, 6215R, 230R, and 250R FT4 Tractors; 6170M/6170R, 6190R and 6210R IT4 Tractors; 7330/7330P, 7430/7430P, and 7530P Tractors

- 6049 lb (2744 kg) lift capacity at pivot point
- 176-in. (4480 mm) maximum lift height
- Mechanical self-leveling
- Single-point hydraulic connection
- Automatic mast latch for tool-free, fast attachment and removal
- Integrated parking stands
- Premium feature options to improve productivity

H310 MSL for 6E

- 3946 lbs. (1790 kg) lift capacity at full height
- 151-in. (3830 mm) maximum lift height
- Mechanical self-leveling
- Single-point hydraulic connection
- Integrated parking stands
- Loader suspension system for less loader bounce

H310 NSL for 5M and 6E

- 3154-, 3131 lbs. (1408-, 1420 kg) lift capacity at full height
- 149-, 152-in. (3784-, 3852 mm) maximum lift height
- Non self-leveling
- Single-point hydraulic connection
- Integrated parking stands
- Loader suspension system for less loader bounce

540M MSL for 5M and 6E

- 2537-, 2506 lbs. (1153-, 1137 kg) lift capacity at full height
- 138-in. (3501 mm) maximum lift height
- Mechanical self-leveling
- Single-point hydraulic connection
- Integrated parking stands
- Loader suspension system for less loader bounce

540M NSL for 5E 4 cyl., 5M and 6E

- 2582-, 2506 lbs. (1171-, 1153 kg) lift capacity at full height
- 138-in. (3501 mm) maximum lift height
- Non self-leveling
- Single-point hydraulic connection
- Integrated parking stands
- Global carrier, 500 carrier, skid steer carrier

520M MSL for 5E 4-Cylinder and 3-Cylinder

- 2822-, 2908 lbs. (1280-, 1319 kg) lift capacity at full height
- 131-in. (3343 mm) maximum lift height
- Mechanical self-leveling
- Single-point hydraulic connection
- Integrated parking stands
- Loader suspension system for less loader bounce
- Diverter kit allows for 3rd function

520M NSL for 5E 4-Cylinder and 3-Cylinder

- 2368-, 2293 lbs. (1074-, 1040 kg) lift capacity at full height
- 133-in. (3369 mm) maximum lift height
- Non self-leveling
- Single-point hydraulic connection
- Integrated parking stands
- Global carrier, 500 carrier, skid steer carrier
- Diverter kit allows for 3rd function

512 NSL for 5E 3-Cylinder 2WD

- 1538 lbs. (698 kg) lift capacity at full height
- 113-in. (2887 mm) maximum lift height
- Non self-leveling
- Non-parking, rigid mounted loader
- Quik-change attachment carrier

Compact and Utility Tractor Implements

Extend the reach of your John Deere Compact Utility Tractor with a backhoe that'll help you get to the bottom of any job faster, and more easily, than ever. Powerful digging and backfilling action, and excellent visibility to the trench, makes quick work in even tough conditions. A full 180-degree rotation on most models lets you work in tight quarters. Strong subframes ensure the integrity of the tractor. And our unique RockShaft Assist™ (RSA) mounting system on some models lets one person attach unit to tractor in less than five minutes.



BACKHOES



260B

Compatible with 1 Family and 2025R

- Digging depth 6ft., 2-in. (1.9 m)
- Swing arc 150 degrees
- SAE dipperstick digging force 1187 lb (5280 N)
- SAE bucket digging force 2036 lb (9056 N)

375A

Compatible with 3R Cab and Open Station Tractors

- Digging depth 7-ft., 10-in. (2.39 m)
- Swing arc 180 degrees
- SAE dipperstick digging force 2041 lb (9079 N)
- SAE bucket digging force 3063 lb (13625 N)

385A

Compatible with the 3R Open Station Tractors

- Digging depth 8-ft., 7-in. (2.6 m)
- Swing arc 180 degrees
- SAE dipperstick digging force 2449 lb (10893 N)
- SAE bucket digging force 3752 lb (16694 N)

485A

Compatible with the 4M and 4R Tractors

- Digging depth 8-ft., 6-in. (2.5 m)
- Swing arc 180 degrees
- SAE dipperstick digging force 2449 lb (10893 N)
- SAE bucket digging force 3752 lb (16694 N)

270B

Compatible with 2032R and 2038R

- Digging depth 7 ft, 0 in. (2.13 m)
- Swing arc 150 degrees
- SAE dipperstick digging force 1502 lb (6681 N)
- SAE bucket digging force 2474 lb (11005 N)

370B

Compatible with 2018 and newer 3E Tractors

- Digging depth 6 ft, 10 in. (2.08 m)
- Swing arc 148 degree (angle)
- SAE bucket digging force 2692lb (11,975 N)

485

Compatible with the 5045E-5075E Open Station

- Digging depth 8-ft., 9-in. (2.67 m)
- Swing arc 180 degrees
- SAE dipperstick digging force 2435 lb (10830 N)
- SAE bucket digging force 3730 lb (16590 N)

595

Compatible with the 5M and the 5R Tractors.

- Digging depth 610 mm (2-ft) flat bottom 9-ft., 4-in. (2.8 m)
- Swing arc 180 degrees
- SAE dipperstick digging force 3065 lb (13634 N)
- SAE bucket digging force 5532 lb (24608 N)

MOWER DECKS

54D 7-Iron™ Mid-Mount AutoConnect Side Discharge Mower

Compatible with the 2025R Tractor

- Cutting width 54-in. (137-cm)
- Overall width, deflector up 60-in. (152-cm)
- Overall width, deflector down 68.5-in. (174-cm)
- Cutting height 1- to 4-in. (2.54- to 10.16-cm)
- Blade tip speed (at 2600 rpm) 16,751 fpm
- Requires no tools to connect or disconnect

60D 7-Iron™ Mid-Mount AutoConnect Side Discharge Mower

Compatible with 1023E, 1025R, and 2025R Tractors

- Cutting width 60-in. (152-cm)
- Overall width, deflector up 62.5-in. (159-cm)
- Overall width, deflector down 73-in. (185-cm)
- Cutting height 1- to 4-in. (2.54- to 10.16-cm)
- Blade tip speed (at 2600 rpm) 15,437 fpm
- Requires no tools to connect or disconnect

72D AutoConnect 7-Iron™ Mid-Mount Side Discharge

Compatible with the 2032R, 2038R and 3R Tractors

- Cutting width 72.8-in. (185-cm)
- Overall width, deflector up 73.5-in. (187-cm)
- Overall width, deflector down 85.5-in. (217-cm)
- Cutting height 1- to 5.5-in. (2.5- to 13.9-cm)



3-BAG POWER FLOW MCS

3 Bag Power Flow System

Compatible with 1023E, 1025R, and 2025R, Tractors that have a 60D or 54D, Mid-Mount Mower Deck

- Capacity: 14 bushels (.49 m³)
- Hopper dimensions:
Width: 45.75-in. (1162.1 mm)
Length: 49-in. (1244.6 mm)
Height: 44-in. (1117.6 mm)



Compact and Utility Tractor Implements

Cutters that are hardworking and long lasting are worth the investment. Cutters, in other words, like the John Deere MX, HX and CX Series. They're not designed for the showroom; they're made for the kind of jobs tractors face the most – from trimming back brush and weed and knocking down stalks to clearing roadsides and cleaning up commercial worksites.

The deck design makes these cutters stronger and more durable. Internal supports add to the frame strength. And, the domed shape? That sheds water and debris. Like we said, they're designed for real life.



MX SERIES ROTARY CUTTERS

MX5

- Single spindle
- 3 point hitch (cat 1 or 2)
- 540 rpm PTO
- Cuts 5 feet wide (1.5 m)
- Minimum Tractor PTO required: 25 hp (18.6 kW)
- Cutting capacity: 2-in. (5.1 cm) in diameter

MX6

- Single spindle
- 3 point hitch (cat 1 or 2)
- 540 rpm PTO
- Cuts 6 feet wide (1.8 m)
- Minimum Tractor PTO required: 30 hp (22 kW)
- Cutting capacity: 2-in. (5.1 cm) in diameter

MX7

- Single spindle
- 3 point hitch (cat 1 or 2)
- 540 rpm PTO
- Cuts 7 feet wide (2.1 m)
- Minimum Tractor PTO required: 40 hp (30 kW)
- Cutting capacity: 2-in. (5.1 cm) in diameter

MX8

- Multi-spindle
- Available in 3 point hitch (cat 2,3 or 3N), pull-type hitch, semi-mounted and semi-mounted hydraulic-offset
- 540 rpm PTO
- Cuts 8 feet wide (2.4 m)
- Minimum Tractor PTO required: 40 hp (30 kW)
- Cutting capacity: 2-in. (5.1 cm) in diameter

MX10

- Multi-spindle
- Available in 3 point hitch (cat 2,3 or 3N), pull-type hitch, semi-mounted and semi-mounted hydraulic-offset
- 540 rpm PTO
- Cuts 10 feet wide (3 m)
- Minimum Tractor PTO required: 40 hp (30 kW)
- Cutting capacity: 2-in. (5.1 cm) in diameter

MX15

- Flex wing
- Pull-type hitch
- 540 rpm PTO
- Cuts 15 feet wide (4.6 m)
- Minimum Tractor PTO required: 50 hp (37 kW)
- Cutting capacity: 2-in. (5.1 cm) in diameter

HX SERIES ROTARY CUTTERS

HX6

- Single spindle
- 3 point hitch (cat 2 or 3N)
- 540 rpm PTO
- Cuts 6 feet wide (1.8 m)
- Minimum Tractor PTO power: 40 hp (30 kW)
- Cutting capacity: 4-in. (10.2 cm) in diameter

HX7

- Single spindle
- 3 point hitch (cat 2 or 3N)
- 540 rpm PTO
- Cuts 7 feet wide (2.1 m)
- Minimum Tractor PTO power: 45 hp (35 kW)
- Cutting capacity: 4-in. (10.2 cm) in diameter

HX10

- Multi-spindle (2 spindles)
- Available in 3 point hitch (cat 2,3 or 3N) and pull-type hitch
- 540 rpm PTO
- Cuts 10 feet wide (3.2 m)
- Minimum Tractor PTO power: 3-point hitch: 80 hp (60 kW) - Pull-type hitch: 50 hp (37 kW)
- Cutting capacity: 3-in. (7.6 cm) in diameter

HX14

- Multi-spindle (3 spindles)
- Available in 3 point hitch (cat 2,3 or 3N) and pull-type hitch
- 1000 rpm PTO
- Cuts 13-ft. 9-in. wide (4.2 m)
- Minimum Tractor PTO power: 3-point hitch: 90 hp (67 kW) - Pull-type hitch: 60 hp (45 kW)
- Cutting capacity: 3-in. (7.6 cm) in diameter



E, M, & R SERIES HEAVY-DUTY FLEX WING ROTARY CUTTERS

E12

- Flex wing
- Cutting width: 12 feet wide (3.7m)
- Standard self-level hitch clevis with 57.2-cm (22.5-in.) narrow-profile width
- 540 rpm PTO
- Minimum tractor PTO required: 40hp (30kW)
- Newly-designed cutting chamber
- Cutting capacity: 2in. (5.08cm) in diameter

R10

- Flex wing
- Cutting width: 10ft wide (3.05m)
- Standard self-level hitch clevis with 57.2-cm (22.5-in.) narrow-profile width
- Ball-type self-level hitch with 57.2-cm (22.5-in.) narrow-profile width and 2-degree rotation freedom to each side
- 540 rpm PTO
- Minimum Tractor PTO required: 50hp (37kW)
- Cutting capacity: 4 in. (10.16cm) in diameter
- Rear wheel torsional suspension with sealed bearing
- Newly designed cutting chamber

M15

- Flex wing
- Cutting width: 15 feet wide (4.6m)
- Standard self-level hitch clevis with 57.2-cm (22.5-in.) narrow-profile width
- 540 or 1000 PTO RPM
- Minimum Tractor PTO required: 55hp (41kW)
- Cutting capacity: 3 in (7.6cm) in diameter
- Newly-designed cutting chamber
- New front and rear suspension options

R15

- Flex wing
- Cutting width: 15ft wide (4.6m)
- Standard self-level hitch clevis with 57.2-cm (22.5-in.) narrow-profile width
- Ball-type self-level hitch with 57.2-cm (22.5-in.) narrow-profile width and 2-degree rotation freedom to each side
- Swivel hitch
- 540 or 1,000 rpm PTO
- Minimum Tractor PTO required: 55hp (41kW)
- Cutting capacity: 4-in (10.2cm) in diameter
- Rear wheel torsional suspension with sealed bearings
- New frontal suspension and swivel hitch options

M20

- Flex wing
- Cutting width: 20 ft. (6.1m)
- Standard self-level hitch clevis with 57.2-cm (22.5-in.) narrow-profile width
- Ball-type self-level hitch with 57.2-cm (22.5-in.) narrow-profile width and 2-degree rotation freedom to each side
- 540 or 1,000 rpm PTO
- Minimum Tractor PTO required: 75hp (56Kw)
- Cutting capacity: 3-in. (7.6cm) in diameter
- Newly-designed cutter chamber
- New front and rear suspension options

R20

- Flex wing
- Cutting width: 20ft wide (6.1m)
- Standard self-level hitch clevis with 57.2-cm (22.5-in.) narrow-profile width
- Ball-type self-level hitch with 57.2-cm (22.5-in.) narrow-profile width and 2-degree rotation freedom to each side
- 540 or 1,000 rpm PTO
- Minimum Tractor PTO required: 75hp (56kW)
- Cutting capacity: 4-in. (10.2 cm) in diameter
- Rear wheel torsional suspension with sealed bearings
- Hammer blade option



You can get full cutting action up to 45 degrees above, and 22 degrees below horizontal - great for hillsides and ditches.

25A AND 300 SERIES FLAIL MOWERS

25A

- Flail mower
- 3 point hitch (cat 1 or 2)
- 540 rpm PTO
- Cuts 6-ft. 6-in. wide (1.98 m)
- Tractor PTO required: 30 to 75 hp (22 - 56 kW)



For tough mowing jobs, get a mower that will last...a durable 300 series or 25A Flail mower from John Deere. See your dealer today to find out more.

360

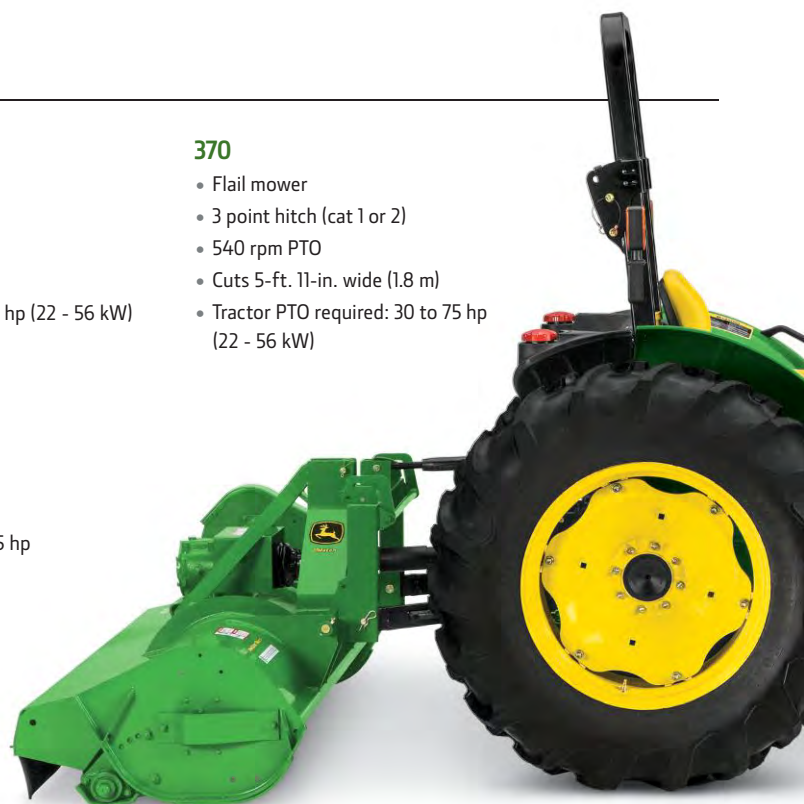
- Flail mower
- 3 point hitch (cat 1)
- 540 rpm PTO
- Cuts 4-ft. 10-in. wide (1.5 m)
- Tractor PTO required: 30 to 75 hp (22 - 56 kW)

390

- Flail mower
- 3 point hitch (cat 1 or 2)
- 540 rpm PTO
- Cuts 7-ft. 6-in. wide (2.3 m)
- Tractor PTO required: 40 to 75 hp (30 - 56 kW)

370

- Flail mower
- 3 point hitch (cat 1 or 2)
- 540 rpm PTO
- Cuts 5-ft. 11-in. wide (1.8 m)
- Tractor PTO required: 30 to 75 hp (22 - 56 kW)



Compact and Utility Tractor Implements

Whatever Mother Nature throws at you, you can handle – because we've got the implements you need to take on the heaviest of snow-falls one day, and turn acres of soil the next. Blowers let you quickly and efficiently move large amounts of snow away from yards, driveways, roadways, runways and sidewalks. Versatile front blades make it easy to push snow, dirt or gravel around. Rugged tillers dig deep and keep you from getting ground down.



SNOW BLOWERS FOR COMPACT UTILITY TRACTORS

47-in. Quick Hitch Snowblower

- Overall Width 48-in. (122-cm)
- Lift system hydraulic with down pressure
- Lift height 11-in. (27.9-cm)
- Speed of auger 170 rpm

54-in. Quick Hitch Snowblower

- Overall Width 55-in. (140-cm)
- Lift system hydraulic with down pressure
- Lift height 11-in. (27.9-cm)
- Speed of auger 176 rpm

59-in. Snowblower

- Width 59-in. (149.9-cm)
- Lift system hydraulic
- Lift height 8-in. (20.3 cm)
- Speed of auger 180 rpm

FRONT BLADES AND ROTARY BROOMS

54-in. Front Blade

Compatible with 1023E, 1025R, 1026R, and 2025R Tractors

- Cutting width:
 - Blade straight 54-in. (137.2-cm)
 - Blade angled 15 degrees 52-3/16-in. (132.5-cm)
 - Blade angled 27 degrees 48-1/8-in. (122.2-cm)
- Angling positions:
 - Right and left 0 degrees to 27 degrees

60-in. Front Blade

Compatible with 950R, 1023E, 1025R, 1026R, 2210, 2305, 2025R, model year 2013-2016 2032R, 2320, 2520, 2720, 4010, 4100, 4110 and 4115 Tractors

- Cutting width:
 - Blade straight 60-in. (152-cm)
 - Blade angled 15 degrees
 - Blade angled 27 degrees
- Angling positions:
 - Right and left 0 degrees to 27 degrees

366 Front Mounted Blade

Compatible with the 2032R, 2038R and 3R Tractors

- Cutting depth 4-in. (10.2-cm)
- Angling - 30 degrees
- Cutting width:
 - Blade straight 66-in. (167-cm)
 - Blade angled 30 degrees 57-in. (144-cm)

52-in. Quick-Hitch Rotary Broom

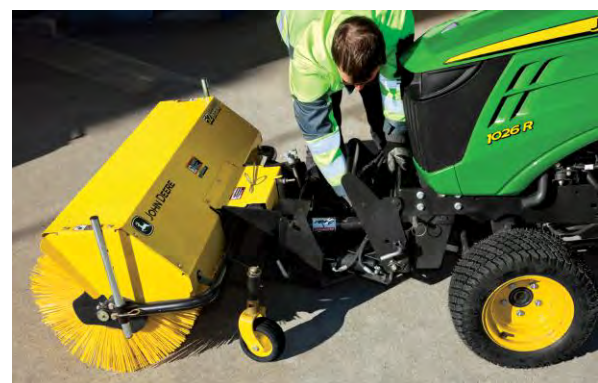
Compatible with 1023E, 1025R, 1026R, and 2025R

- Clearing width:
 - Broom straight 52-in. (132-cm)
 - Broom angled 27 degrees 48-in. (122-cm)
- Brush diameter 21-in. (53-cm)
- Hydraulic angling positions:
 - Right and left 0 degrees to 27 degrees

60-in. Heavy-Duty Rotary Broom

Compatible with 1023E, 1025R, 2025R, 2520, 2032R, and 3R Tractors

- Brush width 60-in. (152-cm)
- Brush diameter 26-in. (66-cm)
- Sweeping path at 27 degrees - Front quick-hitch 53.5-in. (136-cm)
- Sweeping path at 30 degrees - Front 3-point hitch 50-in. (127-cm)



HEAVY-DUTY TILLERS FOR UTILITY TRACTORS

647

- Tills up to 7 inches deep
- Width of cut: 48-in. (121-cm)
- Mounts to tractors equipped with a Category 1, 3-point hitch and 540-rpm rear power take-off (PTO)
- Tractor power take off (PTO) horsepower: 15-35

673

- Tills up to 7 inches deep
- Width of cut: 73-in. (185-cm)
- Mounts to tractors equipped with a Category 1, 3-point hitch and 540-rpm rear power take-off (PTO)
- Tractor power take off (PTO) horsepower: 30-50

681

- Tills up to 8 inches deep
- Width of cut: 82-in. (208-cm)
- Mounts to tractors equipped with a Category 1, 3-point hitch and 540-rpm rear power take-off (PTO)
- Tractor power take off (PTO) horsepower: 35-60

655

- Tills up to 7 inches deep
- Width of cut: 55-in. (139-cm)
- Mounts to tractors equipped with a Category 1, 3-point hitch and 540-rpm rear power take-off (PTO)
- Tractor power take off (PTO) horsepower: 15-35

665

- Tills up to 7 inches deep
- Width of cut: 65-in. (165-cm)
- Mounts to tractors equipped with a Category 1, 3-point hitch and 540-rpm rear power take-off (PTO)
- Tractor power take off (PTO) horsepower: 30-50



iMatch™



iMatch

- The iMatch option fits the 1 Family, 2 Family, 3 Family, and 4 Family Tractors
- Easy implement attach and detach rear implements
- Easy installation of compatible 3-point hitch equipment with and without PTO
- The operator can also remain in the seat while installing 3-point hitch mounted equipment

CANOPIES

Standard Canopy

Compatible with 3-5 Series Tractors (LVB25334)

- Requires canopy mounting kit LVB25332

Deluxe Canopy

Compatible with 5 Series Utility Tractors (LVB25785)

- Requires canopy mounting kit LVB25783

Note: A new metal canopy is also now available (A-C3581G)

