

John Deere Commercial Mowing



1500 Series TerrainCut™ Front Mowers



Meet your anytime, anywhere mower.

They say there's a mower for every job. We say there's a mower that can handle just about any job you throw at it. It's called the 1500 Series TerrainCut.

The most capable year-round front mount mowers we've ever made, this new lineup delivers unsurpassed performance. With an available factory-installed ComfortCab, powerful diesel engines that meet US Final EPA T4 requirements, and 7-Iron™ PRO decks, the 1500 TerrainCut Series Mowers are more than up to the task.

Make that tasks – because the 1500 Series is also the most versatile front mower we've ever made. When you combine the full array of available attachments and implements with that heated, cooled, sit-back-and-get-to-work-in-any-weather cab, you've got a machine that pretty much stops at nothing. Mowing and sweeping, pushing and plowing? It's all in a day's work. Every day of the year.

On the clock 24/7/365. Enhancing comfort every second.

From here, the workday looks pretty good. And feels pretty great. You'll be master of all you survey, from early morning to late in the evening (thanks to optional beacon light and rear worklights). And in complete control of your seat, climate and favorite music (including an optional Stereo with AM/FM, Weatherband, SiriusXM® Satellite and iPod®-Ready compatibility).

SiriusXM® is a registered trademark of Sirius XM. iPod® is a registered trademark of Apple Inc.



1550 TerrainCut

- 2WD or 4WD
- 24.2 hp (17.8 kW)
@3000 rpm, PS
- Displacement: 1267 cc
- 0-12 mph (0-19.3 km/h)
- Biodiesel kit available
- 24-month Warranty*

1570 TerrainCut

- 2WD or 4WD
- 37.4 hp (27.5 kW)
@3000 rpm, PS
- Displacement: 1642 cc
- 0-12 mph (0-19.3 km/h)
- B20 Biodiesel compatible
- 24-month Warranty*

1575 TerrainCut

- 4WD
- 37.4 hp (27.5 kW)
@3000 rpm, PS
- Displacement: 1642 cc
- Factory-Installed ComfortCab
- 0-12 mph (0-19.3 km/h)
- B20 Biodiesel compatible
- 24-month Warranty*

1580 TerrainCut

- 4WD
- 37.4 hp (27.5 kW)
@3000 rpm, PS
- Displacement: 1642 cc
- 0-15 mph (0-24 km/h)
- B20 Biodiesel compatible
- 24-month Warranty*

1585 TerrainCut

- 4WD
- 37.4 hp (27.5 kW)
@3000 rpm, PS
- Displacement: 1642 cc
- Factory-Installed ComfortCab
- 0-15 mph (0-24 km/h)
- B20 Biodiesel compatible
- 24-month Warranty*

*Hour and/or usage limitations apply and vary by model. See the WARRANTY FOR NEW JOHN DEERE TURF AND UTILITY EQUIPMENT at dealer for details.

1500 Series TerrainCut™ Front Mowers

What *can't* they do?

As far as the 1500 Series TerrainCut Mowers are concerned, there is no off-season. If there isn't any grass to cut, they're ready to clear driveways. If there's no snow to blow, they'll happily tackle some material piles. And if there's no dirt to push around, just get out the broom and sweep up every sidewalk in sight.

And with the factory-installed, fully enclosed ComfortCab, along with a deck lift system that makes swapping implements a snap, you won't have to worry about operators having cold feet. Or getting hot under the collar.



Optional Accessories



Wider track width.

With the dual wheel kit, achieve a wider stance for various applications.



See behind you.

Exterior mirror kit allows easier rear visibility.



Steady your way.

Add a weight kit to keep it all nice and balanced, no matter what implement you're using.



Keep away.

Not that you ever like to slow down, but if you're out on the road you'll be sure to be seen.



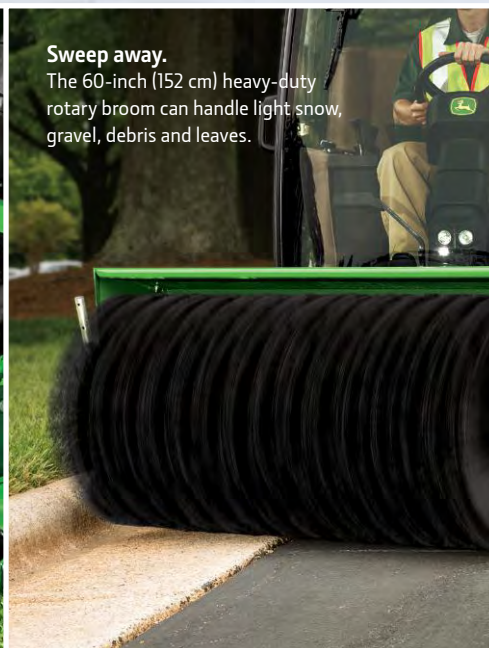
Blow away.

47- or 60-inch (119 cm or 152 cm) cutting width snow blowers have a two-stage design to handle wet, heavy snow with ease.



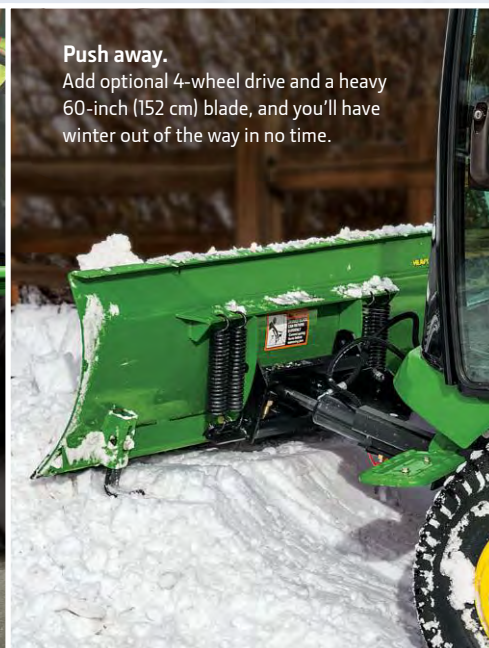
Cut away.

When there's grass to be cut, go at it with everything you've got – including a side-discharging 72-in (183 cm) deck out in the front.



Sweep away.

The 60-inch (152 cm) heavy-duty rotary broom can handle light snow, gravel, debris and leaves.



Push away.

Add optional 4-wheel drive and a heavy 60-inch (152 cm) blade, and you'll have winter out of the way in no time.

1600 Wide-Area Mower



With sweeping deck coverage, an innovative baffling system that virtually eliminates clumping and wings that follow ground contour, this machine delivers a quality cut acre after acre. Depending on conditions, mowing about 75 acres in an eight-hour day. The 1600 Series III Turbo is also flexible enough to maneuver paths as wide as almost 11 feet and as narrow as 84 inches. You can mow with just one wing and the center deck, or the center deck alone. And with a high-torque engine, on-demand or full-time rear wheel drive and an innovative top-draw cooling system, even after hours and hours of continuous operation grass can expect just one thing: No mercy.



Keep your eyes on the job at hand, no matter what's happening overhead, with 4-post ROPS with canopy.

1600 Turbo Series III

- 60hp (44.7 kW) Diesel
- Displacement 127.6 cu. in. (2.09L)
- 2-speed transmission (high/low range)
- Maximum forward speed: 15 mph (24.1 km/h)
- Fuel capacity: 22 U.S. gal. (83.3 L)
- Full-time or On-Demand 4WD
- Rear Discharge 7-gauge steel decks
- 62 in. center, (2) 42 in. side decks (Max. 128 in. cutting width)
- 2-Post or 4-Post ROPS with canopy
- B20 compatible



Enjoy the ride. The standard air-ride seat with armrests and lumbar adjustment is designed with comfort, safety, and ergonomics in mind, ensuring relaxed, healthy sitting for hours on end.

No matter how you look at it, the 1600 Turbo Series III delivers outstanding, all-day-strong performance, from top to bottom.

*Engine HP at Gross SAE J1995, PS, rated at 3000 RPM [1600 Turbo Series III - displacement 127.6 cu. in. (2.09L)].