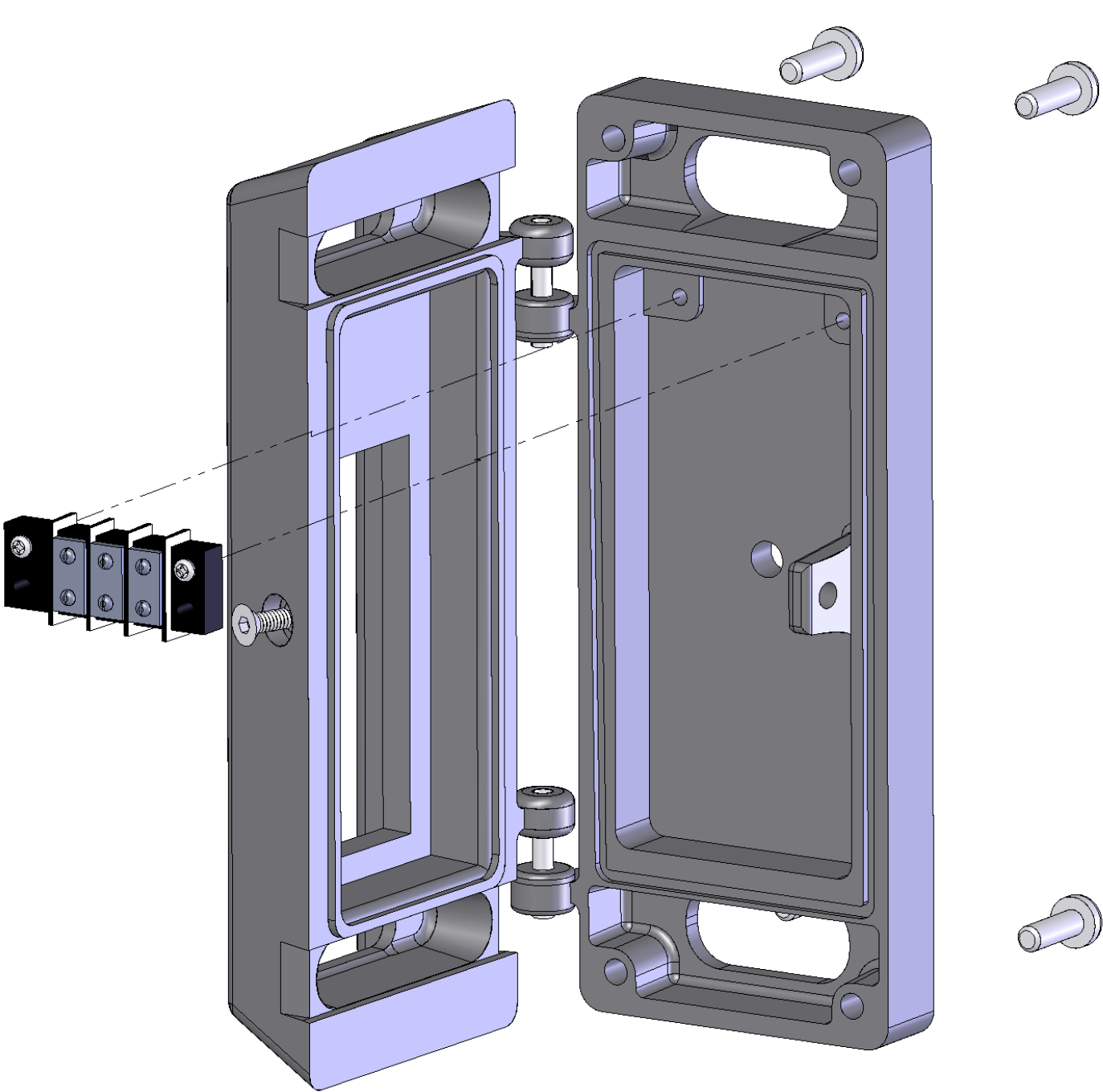
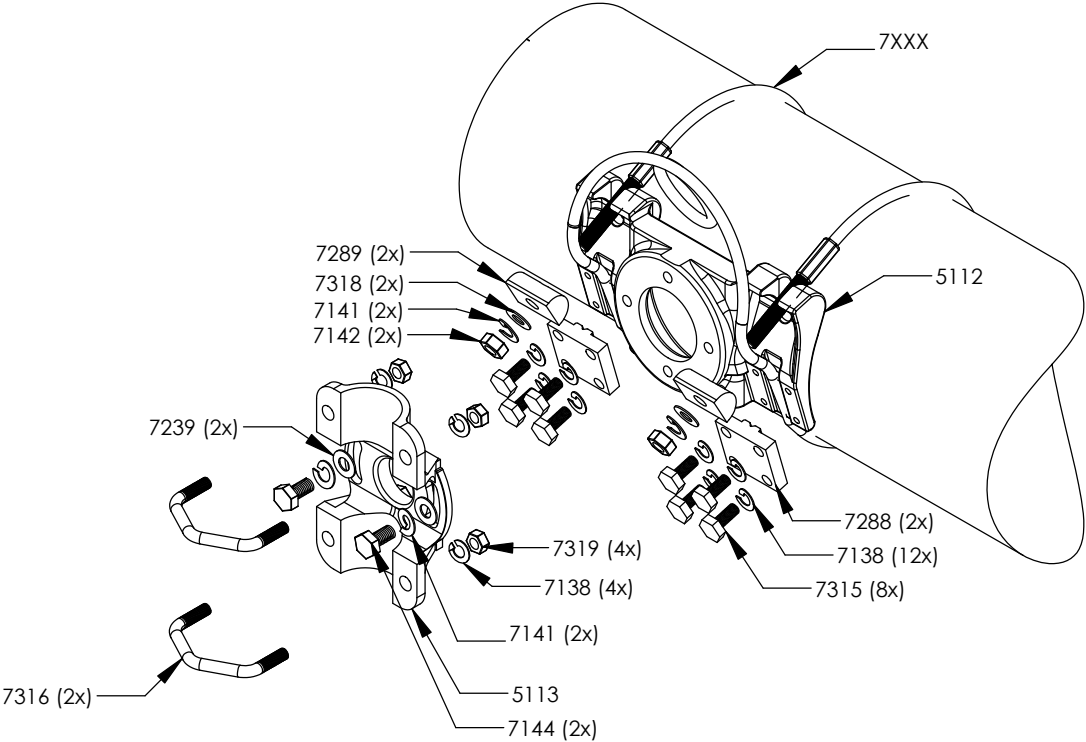


REVISIONS			
REV.	DESCRIPTION	DATE	APPROVED
A	INITIAL RELEASE	4/30/19	AMK



	NAME	DATE	DIMENSIONS ARE IN INCHES TOLERANCES: FRACTIONAL ± ANGULAR: MACH ± 1/32" TWO PLACE DECIMAL ± .03" THREE PLACE DECIMAL ± .010"		COST CAST, INC. Title: 1415 Signal Side of Pole Assembly SIZE A DWG. NO. 13925 REV. A SCALE:1:5 WEIGHT: SHEET 1 OF 1		
DRAWN	ACW	4/29/19					
CHECKED	HRB	4/29/19					
ENG APPR.							
MFG APPR.							
Q.A.			MATERIAL	VARIOUS			
PROPRIETARY AND CONFIDENTIAL THE INFORMATION CONTAINED IN THIS DRAWING IS THE SOLE PROPERTY OF COST CAST, INC. ANY REPRODUCTION IN PART OR AS A WHOLE WITHOUT THE WRITTEN PERMISSION OF COST CAST, INC. IS PROHIBITED.			FINISH	VARIOUS			
			DO NOT SCALE DRAWING				

REVISIONS			
REV.	DESCRIPTION	DATE	APPROVED
A	INITIAL RELEASE	10/28/15	AMK



ITEM NO.	PART DESCRIPTION	
1416-SS-XXX	1416 Saddle & Swivel Assembly, XXX" Cable Double Swage	1
5112	1416 Mast Arm Bracket Saddle, Al Alloy 535.0	1
5113	1416 Mast Arm Bracket Swivel, Al Alloy 535.0	1
7XXX	Aircraft Cable, XXX" Long, Double 3/8" Swage	1
7315	5/16"-18 x 3/4" Cap Screw, SS304	8
7138	5/16" Washer, Lock, SS304	12
7288	Clamp, Cable, Four-Bolt, Extruded, Al,	2
7289	Wedge, Aluminum, Extruded, 1316/1346 & 1416/1446	2
7318	3/8" Washer, Fender, Flat, SS304	2
7316	V-Bolt: 5/16"-18, SS304	2
7319	5/16"-18, Hex Nut	4
7144	3/8"-16 x 1-1/4" Cap Screw, SS304	2
7141	3/8" Washer, Lock, SS304	2

	NAME	DATE	UNLESS OTHERWISE SPECIFIED:			COST CAST, INC		
DRAWN	H.E.R. B	10/20/14	DIMENSIONS ARE IN INCHES TOLERANCES: ANGULAR: MACH± 1/32" TWO PLACE DECIMAL ± .03" THREE PLACE DECIMAL ± .010"			TITLE: 1416-SS-XXX Value-Brac, Mast-Arm Clamp, xxx" Cable, Stainless Steel Hardware		
CHECKED	SAM	10/21/14						
ENG APPR.	JRK	10/22/14						
MFG APPR.	AMK	10/25/14						
PROPRIETARY AND CONFIDENTIAL THE INFORMATION CONTAINED IN THIS DRAWING IS THE SOLE PROPERTY OF COST CAST, INC. ANY REPRODUCTION IN PART OR AS A WHOLE WITHOUT THE WRITTEN PERMISSION OF COST CAST, INC. IS PROHIBITED.			INTERPRET GEOMETRIC TOLERANCING PER:			SIZE DWG. NO. A 13872 SCALE: 1:16WEIGHT: REV A SHEET 1 OF 1		
			MATERIAL VARIOUS					
			FINISH VARIOUS					
			DO NOT SCALE DRAWING					

Tube Length Varies Based Upon Signal/Sign Application
Standard Signal Schedule as Follows:

In-Line Sections

1 Section Signal = 24"

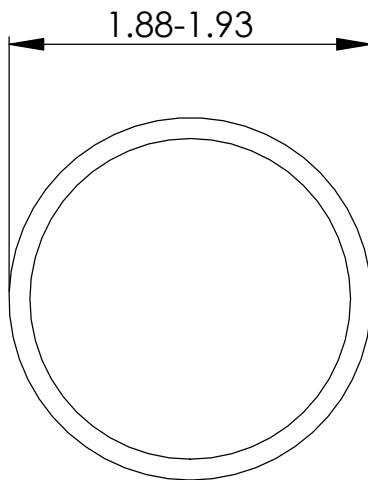
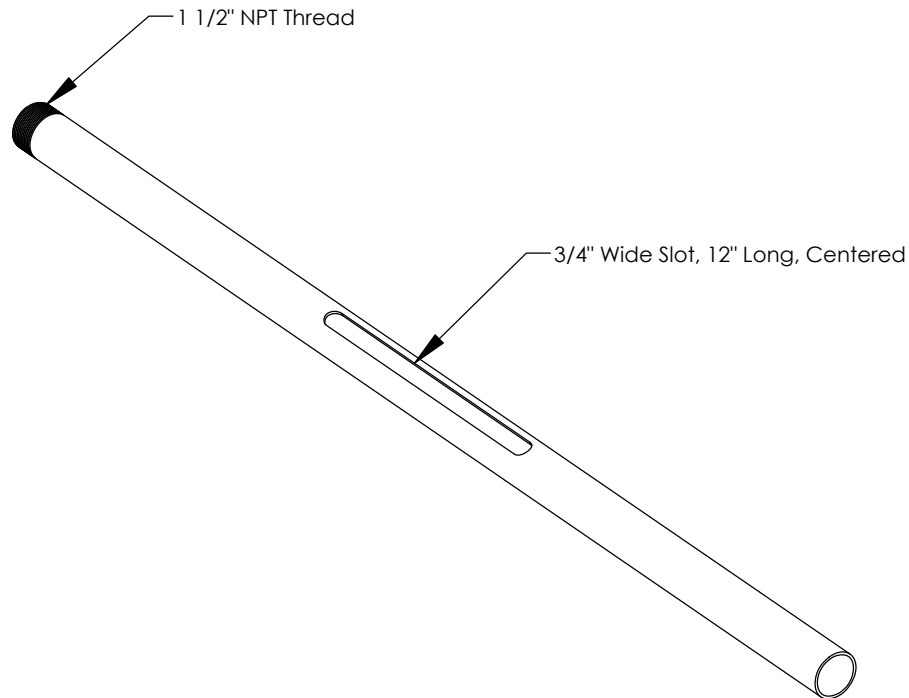
2 Section Signal = 36"

3 Section Signal = 48"

4 Section Signal = 60"

5 Section Signal = 72"

Cluster Sections and Custom Lengths Available



PROPRIETARY AND CONFIDENTIAL
THE INFORMATION CONTAINED IN THIS
DRAWING IS THE SOLE PROPERTY OF
COST CAST, INC. ANY REPRODUCTION
IN PART OR AS A WHOLE WITHOUT THE
WRITTEN PERMISSION OF COST CAST, INC.
IS PROHIBITED.

DIMENSIONS ARE IN INCHES
TOLERANCES:
FRACTIONAL \pm
ANGULAR: MACH \pm 1/32"
TWO PLACE DECIMAL \pm .03"
THREE PLACE DECIMAL \pm .010"

MATERIAL AL 6061-T6

FINISH Mill

DO NOT SCALE DRAWING

COST CAST, INC.

Title:

7916-TGyy

Straight Tube, yy=Length

SIZE **A** DWG. NO. **14024**

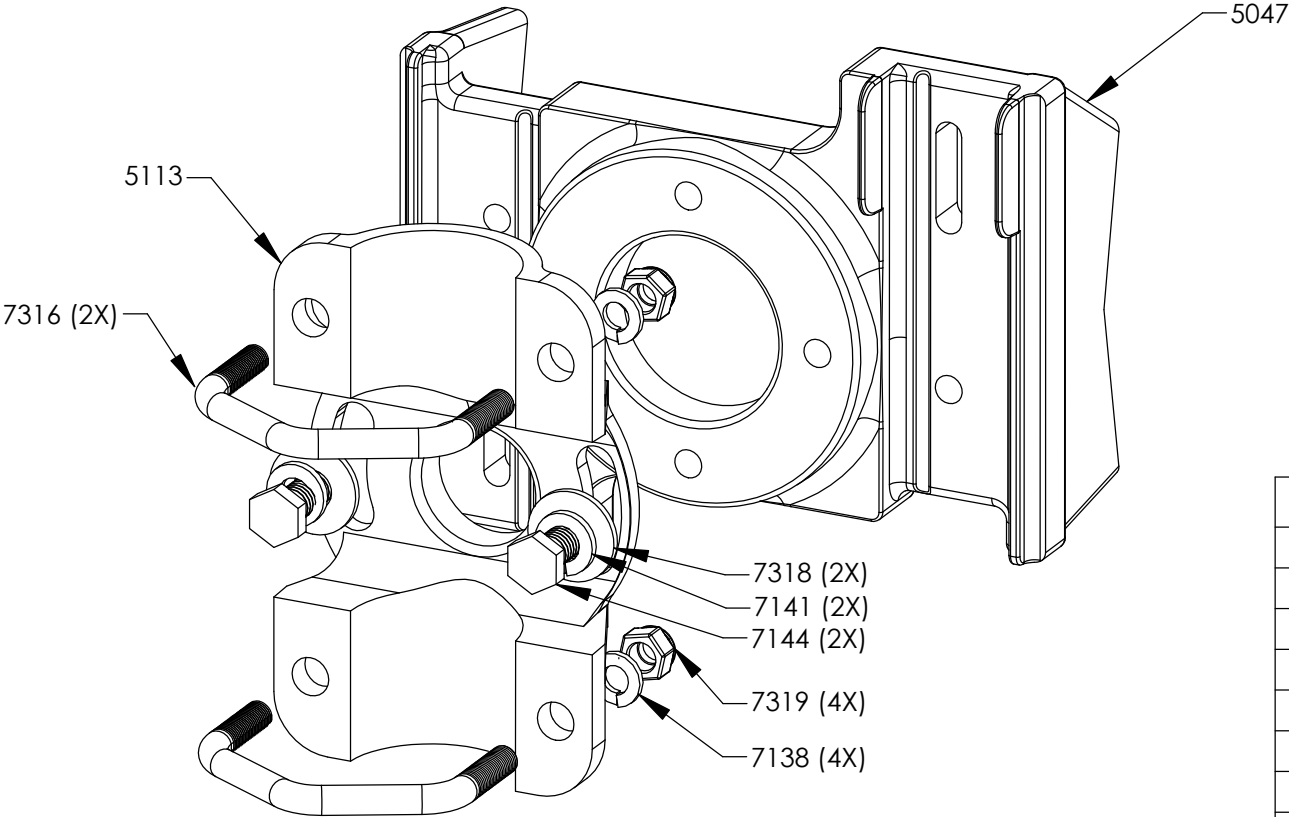
REV.

SCALE: 1:20

WEIGHT:

SHEET 1 OF 1

REVISIONS			
REV.	DESCRIPTION	DATE	APPROVED
A	Initial Release	9/1/16	AMK



ITEM NO.	PART DESCRIPTION	
5047	1916 Saddle, Drilled & Tapped	1
5113	1416 Swivel	1
7316	V-Bolt: 5/16"-18	2
7318	3/8" Washer, Flat, SS304	2
7141	3/8" Washer, Lock, SS304	2
7144	3/8"-16 x 1-1/4" Cap Screw, SS304	2
7319	5/16"-18 Hex Nut, Nyloc, SS304	4
7138	5/16" Washer, Lock, SS304	4

	NAME	DATE	UNLESS OTHERWISE SPECIFIED:		COST CAST, INC							
DRAWN			DIMENSIONS ARE IN INCHES TOLERANCES: FRACTIONAL ± ANGULAR: MACH ± 1/32" TWO PLACE DECIMAL ± .03" THREE PLACE DECIMAL ± .010"		TITLE: 1616-A 1916 Saddle w/ 1416 Swivel SS Banding Application							
CHECKED												
ENG APPR.												
MFG APPR.												
Q.A.			INTERPRET GEOMETRIC TOLERANCING PER:									
PROPRIETARY AND CONFIDENTIAL THE INFORMATION CONTAINED IN THIS DRAWING IS THE SOLE PROPERTY OF COST CAST, INC. ANY REPRODUCTION IN PART OR AS A WHOLE WITHOUT THE WRITTEN PERMISSION OF COST CAST, INC. IS PROHIBITED.			MATERIAL	VARIOUS		SIZE	DWG. NO.		REV			
			FINISH	VARIOUS		A	13856		A			
			DO NOT SCALE DRAWING		SCALE: 1:5					WEIGHT:	SHEET 1 OF 1	

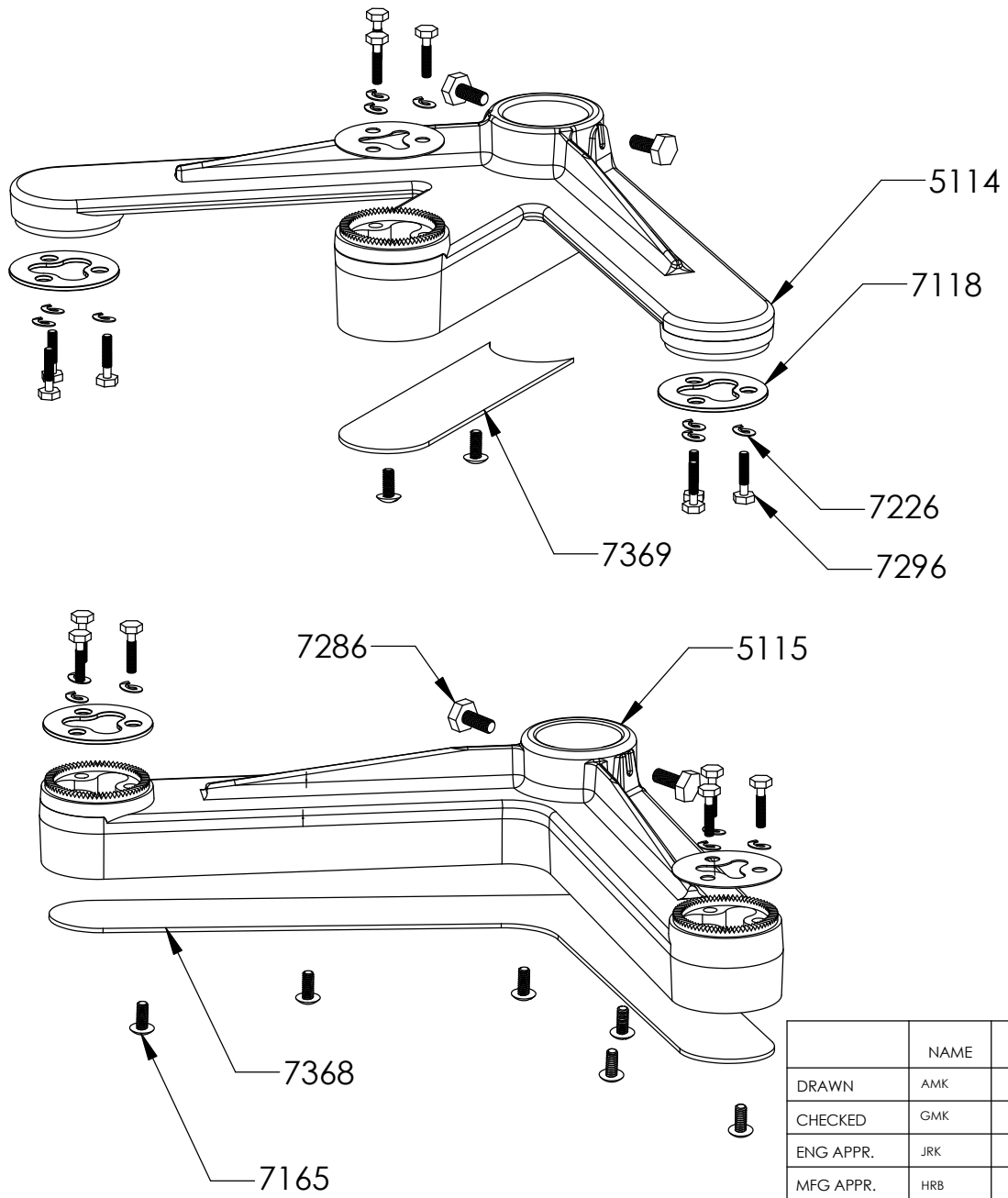
5

4

3

2

1



REVISIONS			
REV.	DESCRIPTION	DATE	APPROVED
A	INITIAL RELEASE	10/14/15	HRB

ITEM NO.	PART DESCRIPTION	
5114	F5 Cluster Foot Top, Al Alloy 319.0	1
7369	F5 Top Arm Cover, Plastic	
5115	F5 Cluster Foot Bottom, Al Alloy 535.0	1
7368	F5 Bottom Arm Cover, Plastic	1
7816-D	Hardware Kit for 1816 Tube	
7286	5/16"-18 x 3/4" Cap Screw SS304	4
7118	Tri-Stud Washer, .090" Thick, SS304	5
7273	Washer, Tri-Stud, Rubber	3
7296	1/4"-20 x 1-1/2" Cap Screw, SS304	15
7226	1/4" Washer Lock, SS304	15
7165	1/4"-20 x 5/8" Cap Screw, SS304	8

	NAME	DATE	UNLESS OTHERWISE SPECIFIED:			COST CAST, INC		
DRAWN	AMK	7/3/15	DIMENSIONS ARE IN INCHES TOLERANCES: ANGULAR: MACH ± 1/32" TWO PLACE DECIMAL ± .03" THREE PLACE DECIMAL ± .010"			TITLE: 1946-TACL Mast Arm Signal Arm Kit 4 and 5-Section Cluster Signal Hanger		
CHECKED	GMK	7/7/15						
ENG APPR.	JRK	7/9/15						
MFG APPR.	HRB	7/9/15						
PROPRIETARY AND CONFIDENTIAL THE INFORMATION CONTAINED IN THIS DRAWING IS THE SOLE PROPERTY OF COST CAST, INC. ANY REPRODUCTION IN PART OR AS A WHOLE WITHOUT THE WRITTEN PERMISSION OF COST CAST, INC. IS PROHIBITED.			INTERPRET GEOMETRIC TOLERANCING PER:			SIZE DWG. NO. REV A 13837 A		
			MATERIAL VARIOUS					
			FINISH VARIOUS					
			DO NOT SCALE DRAWING					
			SCALE: 1:24		WEIGHT:		SHEET 1 OF 1	

Tube Length Varies Based Upon Signal/Sign Application
Standard Signal Schedule as Follows:

In-Line Sections

1 Section Signal = 24"

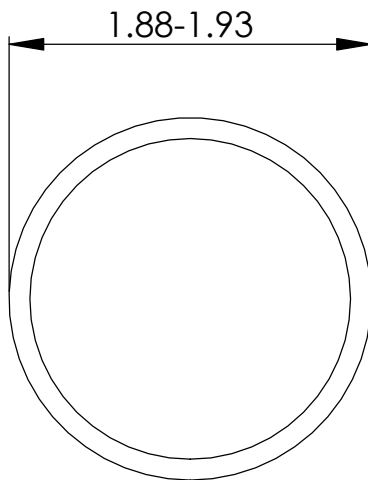
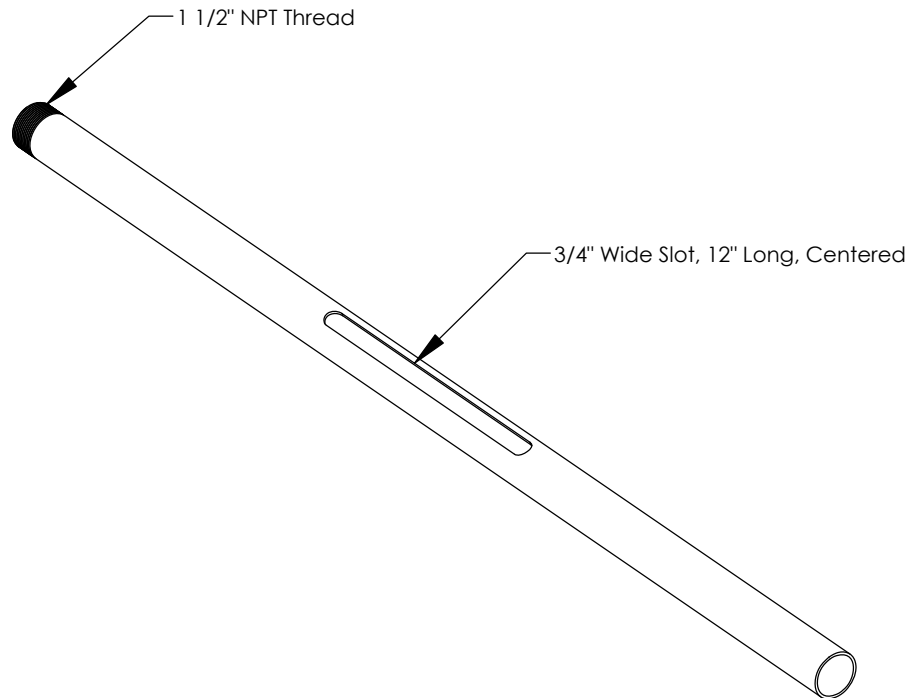
2 Section Signal = 36"

3 Section Signal = 48"

4 Section Signal = 60"

5 Section Signal = 72"

Cluster Sections and Custom Lengths Available



PROPRIETARY AND CONFIDENTIAL
THE INFORMATION CONTAINED IN THIS
DRAWING IS THE SOLE PROPERTY OF
COST CAST, INC. ANY REPRODUCTION
IN PART OR AS A WHOLE WITHOUT THE
WRITTEN PERMISSION OF COST CAST, INC.
IS PROHIBITED.

DIMENSIONS ARE IN INCHES
TOLERANCES:
FRACTIONAL \pm
ANGULAR: MACH \pm 1/32"
TWO PLACE DECIMAL \pm .03"
THREE PLACE DECIMAL \pm .010"

MATERIAL AL 6061-T6

FINISH Mill

DO NOT SCALE DRAWING

COST CAST, INC.

Title:

7916-TGyy

Straight Tube, yy=Length

SIZE **A** DWG. NO. **14024**

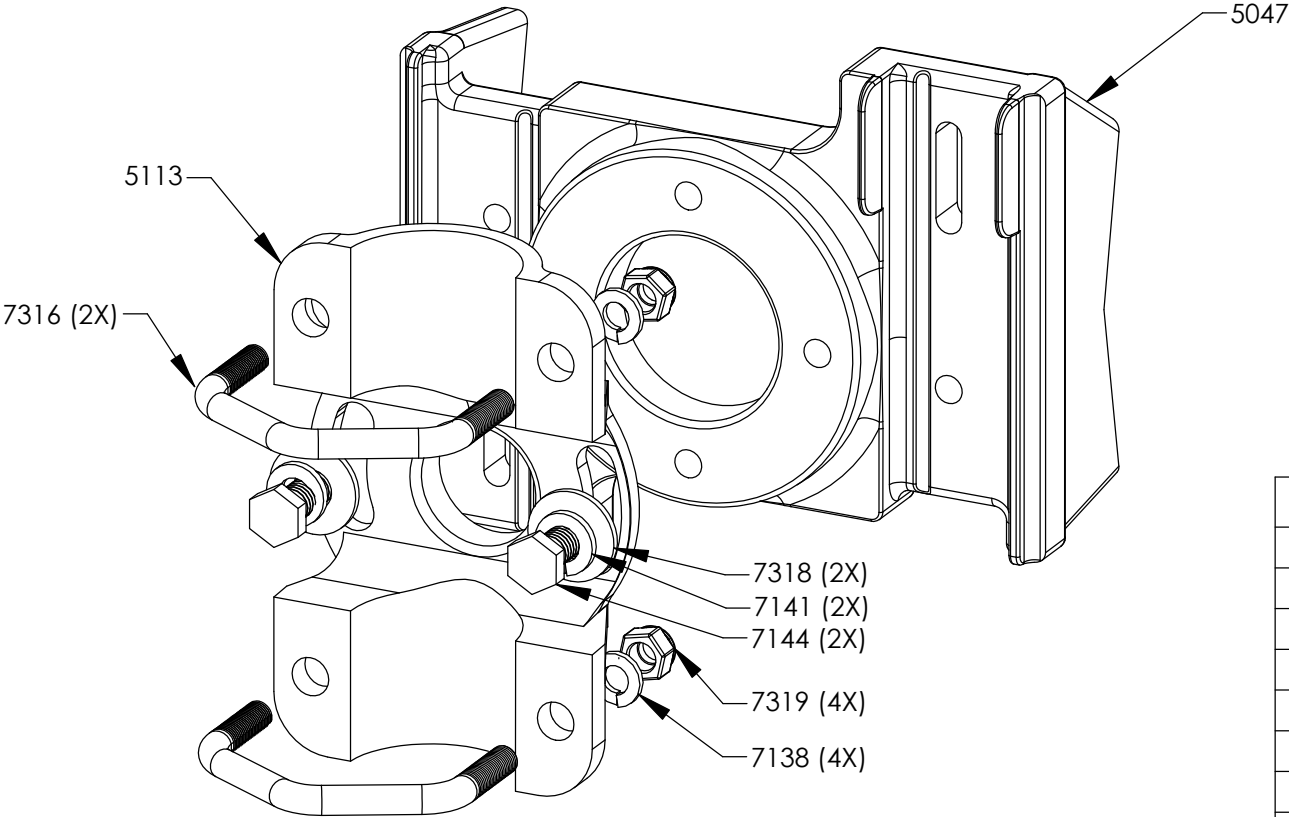
REV.

SCALE: 1:20

WEIGHT:

SHEET 1 OF 1

REVISIONS			
REV.	DESCRIPTION	DATE	APPROVED
A	Initial Release	9/1/16	AMK



ITEM NO.	PART DESCRIPTION	
5047	1916 Saddle, Drilled & Tapped	1
5113	1416 Swivel	1
7316	V-Bolt: 5/16"-18	2
7318	3/8" Washer, Flat, SS304	2
7141	3/8" Washer, Lock, SS304	2
7144	3/8"-16 x 1-1/4" Cap Screw, SS304	2
7319	5/16"-18 Hex Nut, Nyloc, SS304	4
7138	5/16" Washer, Lock, SS304	4

	NAME	DATE	UNLESS OTHERWISE SPECIFIED:			COST CAST, INC			
DRAWN			DIMENSIONS ARE IN INCHES TOLERANCES: FRACTIONAL ± ANGULAR: MACH ± 1/32" TWO PLACE DECIMAL ± .03" THREE PLACE DECIMAL ± .010"			TITLE: 1616-A 1916 Saddle w/ 1416 Swivel SS Banding Application			
CHECKED									
ENG APPR.									
MFG APPR.									
Q.A.			INTERPRET GEOMETRIC TOLERANCING PER:						SIZE A DWG. NO. 13856 REV A
PROPRIETARY AND CONFIDENTIAL THE INFORMATION CONTAINED IN THIS DRAWING IS THE SOLE PROPERTY OF COST CAST, INC. ANY REPRODUCTION IN PART OR AS A WHOLE WITHOUT THE WRITTEN PERMISSION OF COST CAST, INC. IS PROHIBITED.			MATERIAL VARIOUS						
			FINISH VARIOUS						
			DO NOT SCALE DRAWING						
						SCALE: 1:5			

5

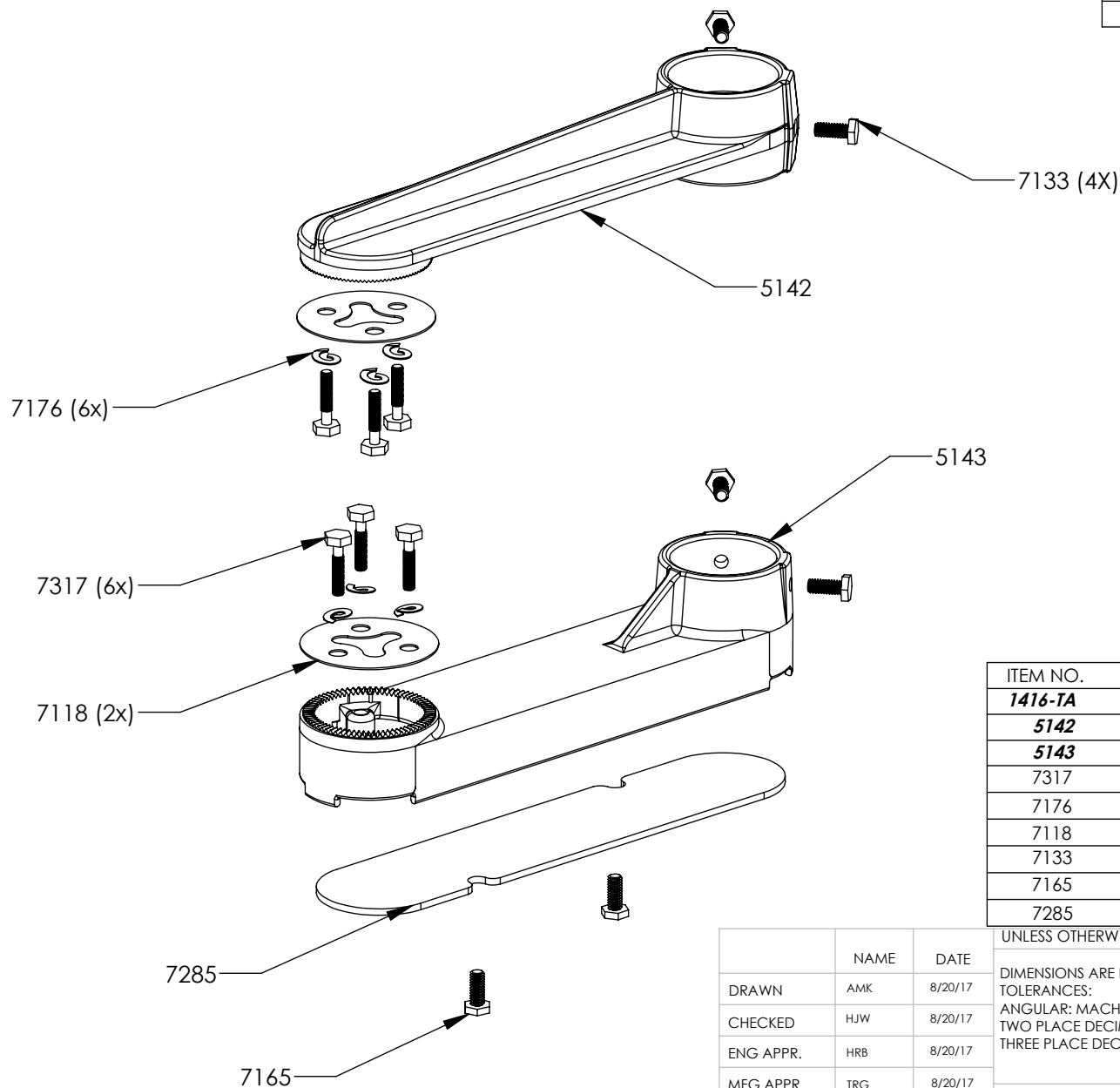
4

3

2

1

REVISIONS			
REV.	DESCRIPTION	DATE	APPROVED
A	INITIAL RELEASE	8/20/17	HRB



ITEM NO.	PART DESCRIPTION	
1416-TA	Mast Arm Signal, Tube Arm Brakeets	1
5142	1416 Mast Arm Bracket Top Arm	1
5143	1416 Mast Arm Bracket Bottom Arm	1
7317	1/4"-20 x 1-1/2" Cap Screw, Hex, SS304	6
7176	1/4" Washer, Lock, SS304	6
7118	Tri-Stud Washer, .090" Thick, SS304	2
7133	1/4"-20 x 3/4" Cap Screw, Hex, SS304	4
7165	1/4"-20-5/8" Cap Screw, Hex, SS304	2
7285	1416 Bottom Arm Cover, Plastic	1

	NAME	DATE
DRAWN	AMK	8/20/17
CHECKED	HJW	8/20/17
ENG APPR.	HRB	8/20/17
MFG APPR.	TRG	8/20/17

PROPRIETARY AND CONFIDENTIAL
 THE INFORMATION CONTAINED IN THIS
 DRAWING IS THE SOLE PROPERTY OF
 COST CAST, INC. ANY REPRODUCTION IN
 PART OR AS A WHOLE WITHOUT THE
 WRITTEN PERMISSION OF COST CAST, INC.
 IS PROHIBITED.

UNLESS OTHERWISE SPECIFIED:

DIMENSIONS ARE IN INCHES
 TOLERANCES:
 ANGULAR: MACH $\pm 1/32"$
 TWO PLACE DECIMAL $\pm .03"$
 THREE PLACE DECIMAL $\pm .010"$

INTERPRET GEOMETRIC
 TOLERANCING PER:

MATERIAL
VARIOUS

FINISH
VARIOUS

DO NOT SCALE DRAWING

COST CAST, INC

TITLE:

1416-TA

Mast Arm Signal Tube Arm Assembly

SIZE **A** DWG. NO. **13985**

REV **A**

SCALE: N/A WEIGHT:

SHEET 1 OF 1

Tube Length Varies Based Upon Signal/Sign Application
Standard Signal Schedule as Follows:

In-Line Sections

1 Section Signal = 24"

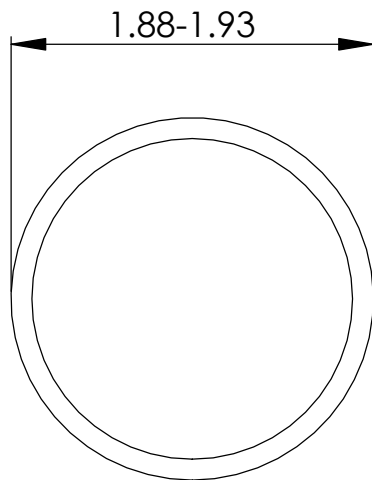
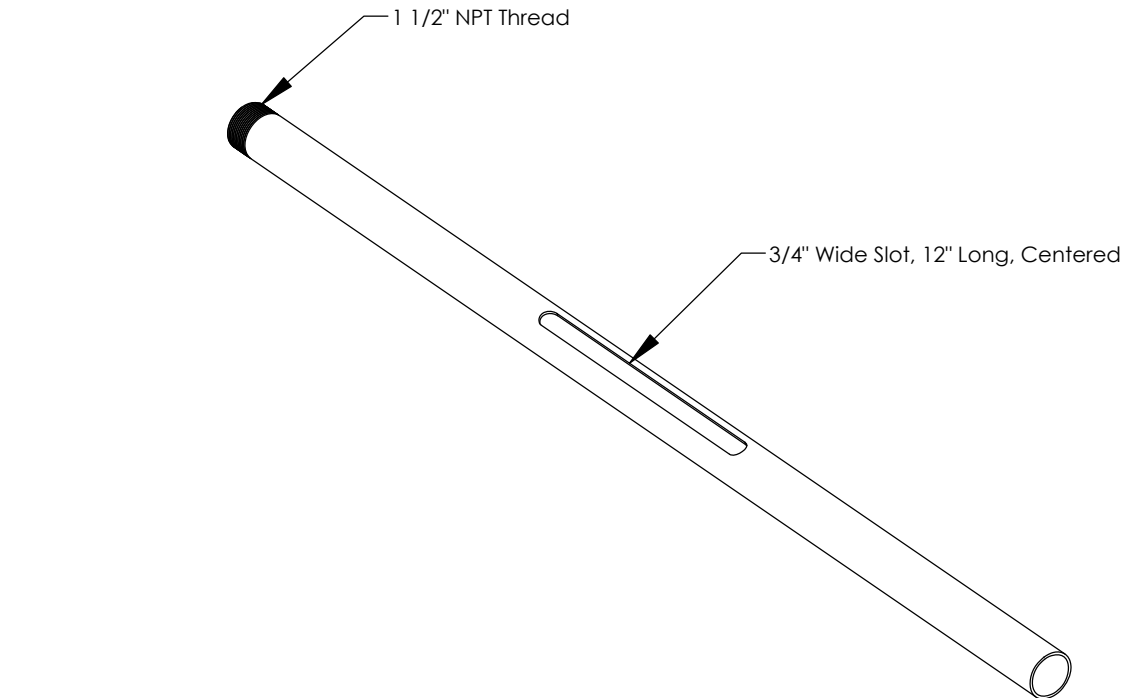
2 Section Signal = 36"

3 Section Signal = 48"

4 Section Signal = 60"

5 Section Signal = 72"

Cluster Sections and Custom Lengths Available



PROPRIETARY AND CONFIDENTIAL
THE INFORMATION CONTAINED IN THIS
DRAWING IS THE SOLE PROPERTY OF
COST CAST, INC. ANY REPRODUCTION
IN PART OR AS A WHOLE WITHOUT THE
WRITTEN PERMISSION OF COST CAST, INC.
IS PROHIBITED.

DIMENSIONS ARE IN INCHES
TOLERANCES:
FRACTIONAL \pm
ANGULAR: MACH \pm 1/32"
TWO PLACE DECIMAL \pm .03"
THREE PLACE DECIMAL \pm .010"

MATERIAL AL 6061-T6

FINISH Mill

DO NOT SCALE DRAWING

COST CAST, INC.

Title:

7916-TGyy

Straight Tube, yy=Length

SIZE **A** DWG. NO. **14024**

REV.

SCALE: 1:20 WEIGHT:

SHEET 1 OF 1

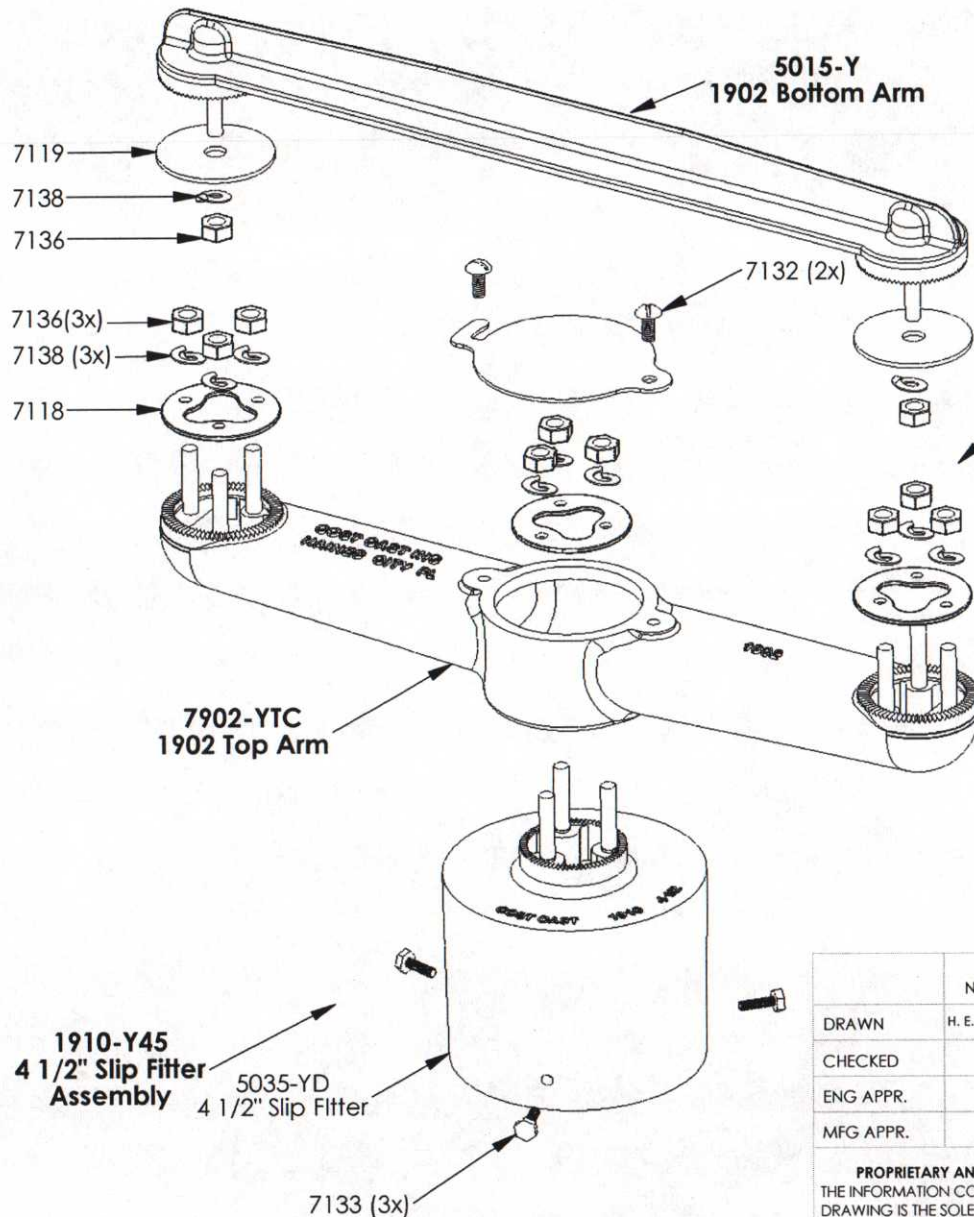
FDOT APPROVAL #65910310408023

65910240408013

SCDOT APPROVAL #TBD

REVISIONS

REV.	DESCRIPTION	DATE	APPROVED
A	INITIAL RELEASE	6/25/13	AMK



ITEM NO.	PART DESCRIPTION	
7902-BTC	1902 Top, Black, w/ Cover Plate	1
5014-BD	1902 Top	1
5020-BD	Bottom Bracket Cover	1
7132	1/4"-20-5/8" Screw, Slotted, Truss, SS304	2
7801-3	Washer Kit, Tri-Stud	2
7118	Washer, Tri-Stud, SS304	1
7136	5/16"-18 Hex Nut, Nylock, SS304	3
7138	5/16" Washer, Lock, SS304	3
5015-B	1902 Bottom, Black	1
7801-S	Washer Kit, Single Stud	2
7119	Washer, Single Hole, SS304	1
7136	5/16"-18 Hex Nut, Nylock, SS304	1
7138	5/16" Washer, Lock, SS304	1
1910-Y45	1910 Slipfitter, 4 1/2" Inner Dia, Fits 4 1/2" Dia Pipe	1
5035-YD	1910 Slipfitter, Al Alloy 319.0, Cast in 5/16"-18 SS304 Studs (3), Painted Federal Yellow	1
7133	1/4"-20 x 3/4" Set Screw, SS304	3
7801-3	Washer Kit, Tri-Stud	1

	NAME	DATE
DRAWN	H. E. RB	6/25/13
CHECKED		
ENG APPR.		
MFG APPR.		

PROPRIETARY AND CONFIDENTIAL
THE INFORMATION CONTAINED IN THIS DRAWING IS THE SOLE PROPERTY OF COST CAST, INC. ANY REPRODUCTION IN PART OR AS A WHOLE WITHOUT THE WRITTEN PERMISSION OF COST CAST, INC. IS PROHIBITED.

UNLESS OTHERWISE SPECIFIED:

DIMENSIONS ARE IN INCHES
TOLERANCES:
ANGULAR: MACH $\pm 1/32"$
TWO PLACE DECIMAL $\pm .03"$
THREE PLACE DECIMAL $\pm .010"$

INTERPRET GEOMETRIC TOLERANCING PER:

MATERIAL

VARIOUS

FINISH

VARIOUS

DO NOT SCALE DRAWING

COST CAST, INC

TITLE: 1910-Y45 w/ 1902-Y

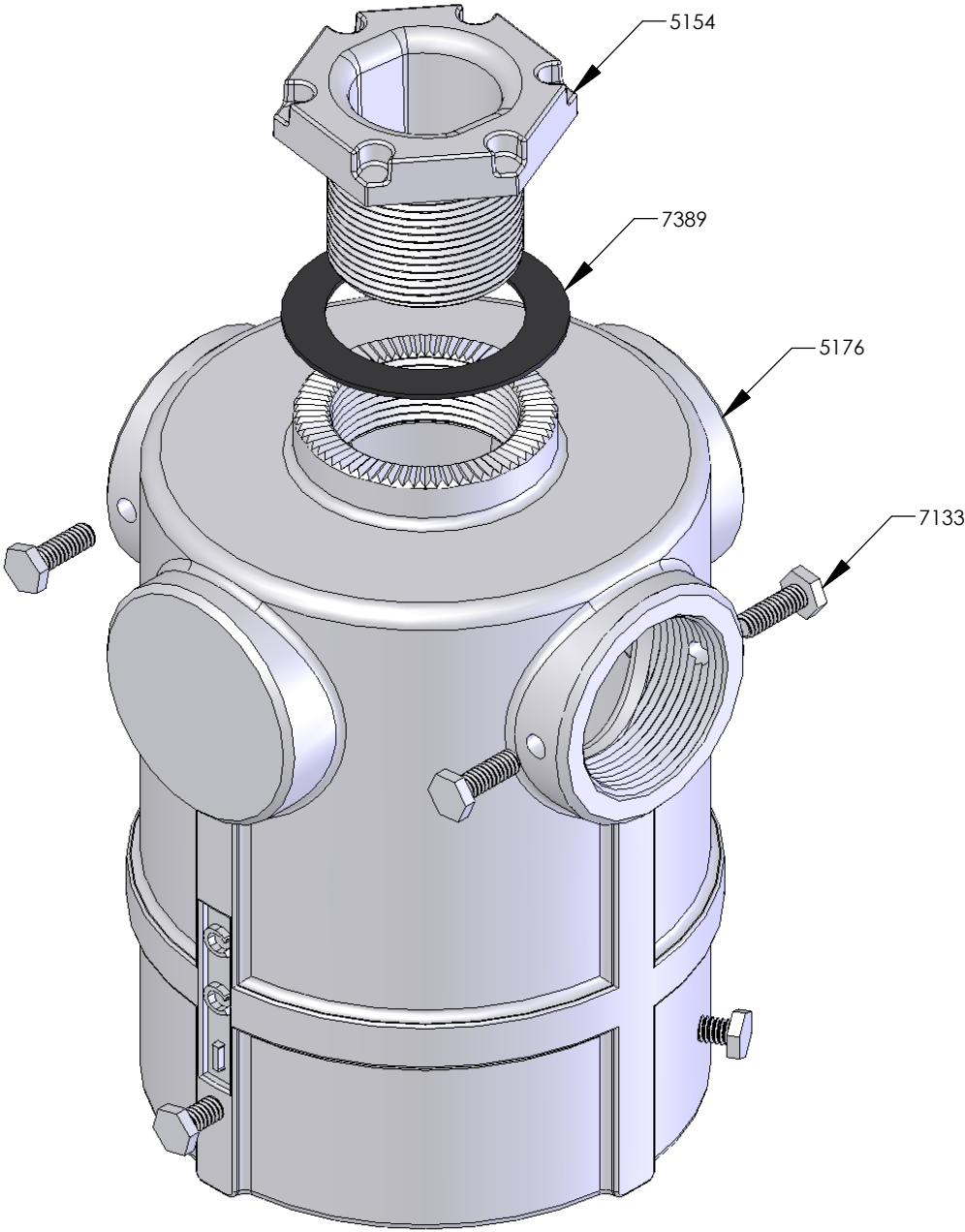
TWO-WAY BRACKET ASSEMBLY
DUAL TOP-OF-POLE

SIZE	DWG. NO.	REV
A	13769	A

SCALE: 1:10 WEIGHT:

SHEET 1 OF 1

REVISIONS			
REV.	DESCRIPTION	DATE	APPROVED
A	INITIAL RELEASE	10/12/08	AMK



PART NO	PART DESCRIPTION	
5176	1950-45-5x Slip Fitter	1
7133	1/4"-20 x 3/4" Long Hex Head Cap Screw, SS	7
5154	1925 Hex Nipple, 1 1-2in NPS	1
7389	Gasket, 1 1/2" NPS, Neopreme	1

	NAME	DATE	DIMENSIONS ARE IN INCHES TOLERANCES: FRACTIONAL ± ANGULAR: MACH ± 1/32" TWO PLACE DECIMAL ± .03" THREE PLACE DECIMAL ± .010"
DRAWN	ACW	10-11-06	
CHECKED	HRB	10-12-06	
ENG APPR.			
MFG APPR.			
Q.A.			MATERIAL
PROPRIETARY AND CONFIDENTIAL THE INFORMATION CONTAINED IN THIS DRAWING IS THE SOLE PROPERTY OF COST CAST, INC. ANY REPRODUCTION IN PART OR AS A WHOLE WITHOUT THE WRITTEN PERMISSION OF COST CAST, INC. IS PROHIBITED.			VARIOUS
			FINISH
			VARIOUS
			DO NOT SCALE DRAWING

COST CAST, INC.		
Title: 1950-U45-3X 3-Way Post Top 1 1/2" NPS		
SIZE	DWG. NO.	REV.
A	13863	A
SCALE: 1:5	WEIGHT:	SHEET 1 OF 1