



CUSHMAN®

STOCK CHASER™



BUILT FOR TIGHT SPACES AND HIGH PLACES.

The Stock Chaser™ is designed to work its way through narrow warehouse aisles, distribution centers and manufacturing facilities. Featuring a spacious cargo deck and a 1,000 lb. payload capacity, it's powered by a zero-emissions, 24V electric drivetrain. If you need a vehicle that can easily maneuver through the most demanding environments, rely on the Stock Chaser to get it done.

LET'S WORK.®

**4- OR 6-
STEP LADDER**
OPTIONS

24V
ELECTRIC
DRIVETRAIN

9.6sq FT
CARGO DECK
CAPACITY

CUSHMAN® STOCK CHASER™



9.6-SQ-FT CARGO DECK



ON-BOARD
BATTERY CHARGER

COMFORT GRIP STEERING

OPTIONS & ACCESSORIES

- Pintle or "E" Hitch
- Counterweight
- Cargo Deck (Galvanized)
- Cargo Deck (Stainless Steel)
- Headlights & Taillight
- Strobe Light (Ladder Required)
- Forward Motion Indicator
- Side Rails
- Hour Meter
- State-of-Charge Meter
- Ladder - 4 Step (Counterweight included)
- Ladder - 6 Step (Counterweight included)



COVERED WITH THE 2-YEAR CUSHMAN
CARE TOTAL PROTECTION WARRANTY

BODY & CHASSIS

| | |
|----------------|---|
| FRAME | Welded Steel w/ DuraShield™ Powder Coat |
| BODY & FINISH | Diamond Plate Poly Primer and Acrylic |
| STANDARD COLOR | Safety Yellow |

DIMENSIONS

| | |
|---------------------|---|
| OVERALL LENGTH | 88.4 in (225 cm) |
| OVERALL WIDTH | 29.5 in (75 cm) |
| OVERALL HEIGHT | 48.0 in (122 cm) (w/o Ladder) 78.0 in (198 cm) (w/ 4-step Ladder) 97.0 in (246 cm) (w/ 6-step Ladder) |
| WHEEL BASE | 48.3 in (123 cm) |
| WHEEL TRACK | N/A Front / 24.75 in (63 cm) Rear |
| GROUND CLEARANCE | 4.0 in (10 cm) |
| CARGO DECK CAPACITY | 750.0 lb (340 kg) |
| CARGO DECK MATERIAL | Plywood |

POWER

| | |
|--------------------|---------------------------------------|
| POWER SOURCE | 24V DC Series Wound |
| HORSEPOWER (KW) | 8.94 hp (6.67 kW) @ 1490 rpm |
| ELECTRICAL SYSTEM | 24V |
| BATTERY (QTY/TYPE) | Four, 6V Deep Cycle |
| BATTERY CHARGER | 24V DC, 100-240V AC On-Board, UL & CE |
| KEY OR PEDAL START | Pedal |
| SPEED CONTROLLER | Solid State 275 Amp Rated |
| DRIVE TRAIN | Motor Shaft Direct Drive |
| TRANSAXLE | Differential w/ Helical Gears |
| GEAR SELECTION | Dash-Mounted Forward-Neutral-Reverse |
| REAR AXLE RATIO | 14.78:1 |

PERFORMANCE

| | |
|--------------------------|---|
| SEATING CAPACITY | 1-Person (Standing) |
| WEIGHT W/O BATTERIES | 522 lb (237 kg) |
| CURB WEIGHT | 810 lb (367 kg) |
| VEHICLE LOAD CAPACITY | 1000 lb (454 kg) |
| BED LOAD CAPACITY | 750 lb (340 kg) |
| TOWING CAPACITY | Normal Draw Bar: 60 lb (27.2 kg) / Max Draw Bar Pull: 715 lb (324 kg) |
| OUTSIDE CLEARANCE CIRCLE | 12.4 ft (3.8 m) |
| SPEED | 8.5 mph max (13.7 kph max) |

STEERING & SUSPENSION

| | |
|----------------------|----------------------------|
| STEERING | Direct Chain & Linkage |
| SUSPENSION | Solid (Front & Rear) |
| SERVICE BRAKE | Rear Wheel Mechanical Drum |
| PARKING BRAKE | Automatic |
| TIRES (FRONT & REAR) | 4.80 x 8 (Load Range B) |

www.cushman.com

©2016 Textron Inc. All rights reserved. Features and specifications of the vehicles are subject to change without notice. Vehicle as photographed may include options not included on base model.

82328-G7 (Rev. 01/2016)



CUSHMAN®

TITAN® XD



MEET THE REAL INDUSTRY GIANT.

Equipped with AC and IntelliBrake™ technology, the Titan XD offers increased energy efficiency and greater range, ready to conquer your longest days. A large cargo deck offers 3,000 pounds of hauling power and its impressive 8,000 lb towing capacity makes no task off limits. So take the burden out of your day and let the Titan XD carry the load.

LET'S WORK.®

48V

**AC ELECTRIC
POWERTRAIN**

2 & 4

**PASSENGER
MODELS**

8000LB

**TOWING
CAPACITY**



2-PASSENGER



4-PASSENGER

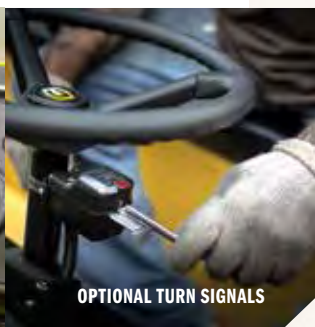
CUSHMAN® TITAN® XD



HALOGEN HEADLIGHTS



FUNCTIONAL DASH



OPTIONAL TURN SIGNALS



OPTIONAL PINTLE HITCH

OPTIONS & ACCESSORIES

- Non-Marking Tires
- Front & Rear Bumper
- Hard Cab (w/ or w/out Doors)
- Pintle Hitch (requires rear bumper)
- Clevis Hitch (requires rear bumper)
- Custom Color
- Headlights (LED)
- Turn Signals

| | 2-PASSENGER | | 4-PASSENGER | |
|------------------------------|---|--|---|--|
| BODY & CHASSIS | | | | |
| FRAME | Welded Steel with DuraShield™ Powder Coat | | | |
| BODY & FINISH | Diamond Plate Patterned, Poly Primer & Acrylic | | | |
| STANDARD COLOR | Yellow | | | |
| DIMENSIONS | | | | |
| OVERALL LENGTH | 114.0 in (290 cm) | | | |
| OVERALL WIDTH | 44.5 in (113 cm) | | | |
| OVERALL HEIGHT | 47.0 in (119 cm) | | | |
| HEIGHT W/ OPTIONAL CAB | 72.0 in (183 cm) | | | |
| WHEEL BASE | 67.0 in (170 cm) | | | |
| FRONT WHEEL TRACK | 38.0 in (96.0 cm) | | | |
| REAR WHEEL TRACK | 38.0 in (96.0 cm) | | | |
| GROUND CLEARANCE | 5.0 in (12 cm) | | | |
| CARGO DECK CAPACITY | 41.5 in (105) W x 75 in (191 cm) L | | 4.75 (12.1 cm) at Differential | |
| CARGO DECK MATERIAL | Weather Proof Deck Board | | | |
| POWER | | | | |
| POWER SOURCE | 48-Volt DC | | | |
| HORSEPOWER (KW) | 16.8 HP (12.5 kW) Peak | | | |
| ELECTRICAL SYSTEM | 48-Volt | | | |
| BATTERY (QTY/TYPE) | Eight, 6-Volt Deep Cycle, Swing Out | | | |
| BATTERY CHARGER | 48V On-Board, 120/240 VAC UL | | | |
| KEY OR PEDAL START | Pedal Start | | | |
| SPEED CONTROLLER | 450 Amp AC | | | |
| DRIVE TRAIN | Motor Shaft Direct Drive | | | |
| TRANSAXLE | Differential with Helical Gears | | | |
| GEAR SELECTION | Dash Mounted Forward-Neutral-Reverse | | | |
| REAR AXLE RATIO | 17:1 | | | |
| PERFORMANCE | | | | |
| SEATING CAPACITY | 2-Person | | 4-Person | |
| WEIGHT W/O BATTERIES | 1260 lb (572 kg) | | 1225 lb (560 kg) | |
| CURB WEIGHT | 1756 lb (796 kg) | | 1720 lb (780 kg) | |
| VEHICLE LOAD CAPACITY | 3000 lb (1361 kg) | | | |
| CARGO DECK LOAD CAPACITY | 2600 lb (1179 kg) / 1600 lb (726 kg) EE | | 2200 lb (998 kg) / 1200 lb (544 kg) EE | |
| TOWING CAPACITY | 8000 lb (3628 kg) | | | |
| OUTSIDE CLEARANCE CIRCLE | 21.25 ft (6.47 m) | | | |
| INTERSECTING AISLE CLEARANCE | 84.0 ft (213 cm) | | | |
| SPEED | 14 mph +/- 0.5 mph (21 kph +/-0.8 kph) / Tow Mode: 5 mph ± .5 (8.1 kph ± .8) | | | |
| STEERING & SUSPENSION | | | | |
| STEERING | Rack and Pinion | | | |
| FRONT SUSPENSION | Independent, Transverse Leaf Spring, Shocks | | | |
| REAR SUSPENSION | Leaf Springs & Shock Absorbers | | | |
| SERVICE BRAKE | Front Hydraulic Disc, Rear Hydraulic Drum | | | |
| PARKING BRAKE | IntelliBrake™ Automatic Parking Brake | | | |
| FRONT/REAR TIRES | 5.70 x 8 (Load Range C) | | | |

www.cushman.com

©2018 Textron Specialized Vehicles Inc. All rights reserved.
800.241.5855

82324-G4 (Rev. 07/2018)



CUSHMAN®

TITAN® HD



VERSATILE AND RELIABLE PERFORMANCE FOR IMPROVED PRODUCTIVITY.

The Cushman® Titan® HD has the versatility you need to get more work done. Equipped with a fully electric, 36V, zero-emissions drive train, the Titan features a payload capacity of up to 2,500 pounds. So, whether you are transporting personnel, materials or equipment, the Titan HD will make the job easier and improve workplace performance.

LET'S WORK.®

2500^{LB}
TOTAL LOAD
CAPACITY

2
PERSON
SEATING

36V
ELECTRIC
DRIVETRAIN OPTION



CUSHMAN® TITAN® HD



SPACIOUS CARGO DECK



SWING-OUT SIDE
BATTERY COMPARTMENT

STANDARD BRAKE LIGHTS

OPTIONS & ACCESSORIES

- Foam Filled Tires
- Front and Rear Bumper
- Forward Motion Indicator
- Hard Cab (with or without Doors)
- Front Hydraulic Brakes
- Pintle Hitch (requires rear bumper)
- Clevis Hitch (requires rear bumper)
- Custom Color
- Headlights and Turn Signals



COVERED WITH THE 2-YEAR CUSHMAN
CARE TOTAL PROTECTION WARRANTY

BODY & CHASSIS

| | |
|----------------|--|
| FRAME | Welded Steel w/ DuraShield™ Powder Coat |
| BODY & FINISH | Diamond Plate Patterned. Poly Primer & Acrylic |
| STANDARD COLOR | Safety Yellow |

DIMENSIONS

| | |
|---------------------|--|
| OVERALL LENGTH | 114.0 in (290 cm) |
| OVERALL WIDTH | 44.5 in (113 cm) |
| OVERALL HEIGHT | 47.0 in (119 cm) |
| WHEEL BASE | 67.0 in (170 cm) |
| WHEEL TRACK | 38.0 in (97 cm) Front / 37.0 in (94 cm) Rear |
| GROUND CLEARANCE | 4.8 in (12 cm) |
| CARGO DECK CAPACITY | 2200 lb (998 kg) |
| CARGO DECK MATERIAL | Heavy Duty Plywood |

POWER

| | |
|---------------------|---|
| POWER SOURCE | 36V DC Series Wound |
| HORSEPOWER (KW) | 8.0 hp (6 kW) @ 1600 rpm |
| ELECTRICAL SYSTEM | 36V DC |
| BATTERY (QTY/TYPER) | Six, 6V Deep Cycle, Swing Out |
| BATTERY CHARGER | 36V On-Board, Delta Q 120 VAC, UL & CSA |
| KEY OR PEDAL START | Pedal |
| SPEED CONTROLLER | Solid State 400 Amp Rated |
| DRIVE TRAIN | Motor Shaft Direct Drive |
| TRANSAXLE | Differential w/ Helical Gears |
| GEAR SELECTION | Dash-Mounted Forward-Neutral-Reverse |
| REAR AXLE RATIO | 14.76:1 |

PERFORMANCE

| | |
|--------------------------|-------------------------------------|
| SEATING CAPACITY | 2-Person |
| WEIGHT W/O BATTERIES | 1040 lb (472 kg) |
| CURB WEIGHT | 1410 lb (640 kg) |
| VEHICLE LOAD CAPACITY | 2500 lb (1134 kg) |
| BED LOAD CAPACITY | 2200 lb (998 kg) |
| TOWING CAPACITY | 4600 lb (2087 kg) |
| OUTSIDE CLEARANCE CIRCLE | 22 ft (6.7 m) |
| SPEED | 13 mph ± 0.5 mph (21 kph ± 0.8 kph) |

STEERING & SUSPENSION

| | |
|----------------------|--|
| STEERING | Rack & Pinion |
| SUSPENSION | Independent, Transverse Leaf Spring, Shocks (Front) Leaf Springs and Shock Absorbers (Rear) |
| SERVICE BRAKE | Rear Wheel Mechanical Drum |
| PARKING BRAKE | Hand-Operated Mechanical |
| TIRES (FRONT & REAR) | 5.70 x 8 (Load Range C) |

www.cushman.com

©2019 Textron Specialized Vehicles Inc. Features and specifications of the vehicles are subject to change without notice. Vehicle as photographed may include options not included on base model.

82304-G5 (Rev. 08/2019)



CUSHMAN®

TUG™



THE SUPREME TOWING MACHINE.

If you need a vehicle with exceptional towing capability, look no further than the Cushman® Tug™. It's built to pull the heaviest loads, with a powerful 48-volt AC motor and an 8,000-lb towing capacity. More than just a workhorse, the Tug makes health and safety a priority with its zero-emissions drivetrain, ergonomic controls and electronic park break that automatically engages at each stop making it an ideal choice for factories, distribution centers and other facilities. No matter the load, you can count on the Tug to pull its weight.

LET'S WORK.®

8000LB
TOWING CAPACITY

48V
AC ELECTRIC
DRIVETRAIN

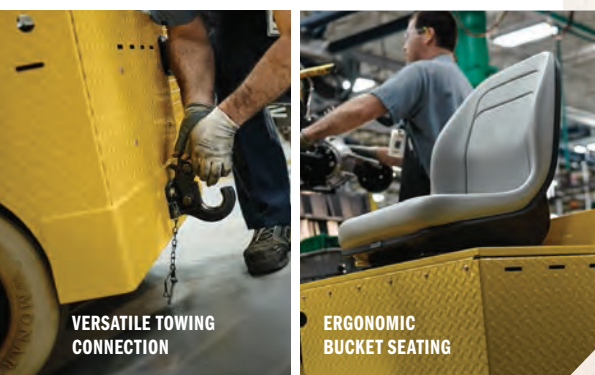
4.9sq FT
CARGO DECK



CUSHMAN® TUG™



DIGITAL STATE OF CHARGE/HOUR METER/SPEEDOMETER



VERSATILE TOWING
CONNECTION

ERGONOMIC
BUCKET SEATING

OPTIONS & ACCESSORIES

- Portable Charger
- Certification Type E & EE
- CE Certification
- Front Hydraulic Brake
- Headlight (Halogen or LED)
- Clevis or Pintle Hitch
- Solid Non-marking Tires
- E-Stop
- T890 Battery Upgrade



COVERED WITH THE 2-YEAR CUSHMAN
CARE TOTAL PROTECTION WARRANTY

BODY & CHASSIS

| | |
|-----------------------|---|
| FRAME | Welded Steel w/ DuraShield™ Powder Coat |
| BODY & FINISH | 4-way Embossed Diamond Pattern |
| STANDARD COLOR | Safety Yellow |
| DIMENSIONS | |
| OVERALL LENGTH | 76.0 in (193 cm) |
| OVERALL WIDTH | 34.5 in (88 cm) |
| OVERALL HEIGHT | 37.0 in (94 cm) |
| WHEEL BASE | 52.5 in (133 cm) |
| WHEEL TRACK | N/A Front / 29.7 in (75 cm) Rear |
| CARGO DECK MATERIAL | HIP Board |
| CARGO DECK DIMENSIONS | 21" (53.3 cm) L x 33.5 (85.1 cm) W |

POWER

| | |
|---------------------|--|
| POWER SOURCE | 48V DC |
| MOTOR | AC Induction |
| HORSEPOWER (KW) | Continuous 6.7hp (5kw); Peak 15.4hp (11.5kw) |
| ELECTRICAL SYSTEM | 48V |
| BATTERY (QTY/TYPER) | Six, 8V Deep Cycle |
| BATTERY CHARGER | 48V DC On-Board, 1000W |
| KEY OR PEDAL START | Pedal |
| SPEED CONTROLLER | 350 AMP AC Programmable. SRO Capable |
| DRIVE TRAIN | Motor Shaft Direct Drive |
| GEAR SELECTION | Dash Mounted (Key Switch) |
| REAR AXLE RATIO | 17.05:1 |

PERFORMANCE

| | |
|--------------------------|--|
| SEATING CAPACITY | 1-Person |
| WEIGHT W/O BATTERIES | 508 lb (230 kg) |
| CURB WEIGHT | 936 lb (425 kg) |
| VEHICLE LOAD CAPACITY | 650 lbs (295 kg) |
| TOWING CAPACITY | 8000 lb (3629 kg) |
| OUTSIDE CLEARANCE CIRCLE | 9.0 ft (2.8 m) |
| INSIDE CLEARANCE CIRCLE | Turnabout Rear Wheel |
| SPEED | 7.8 mph +/- 0.5 mph (12.6 kph +/- 0.8 kph) |

STEERING & SUSPENSION

| | |
|----------------------|---|
| STEERING | Handlebar |
| SUSPENSION | Torsion Block (Front) / Coil Over Shock |
| SERVICE BRAKE | 2-Wheel Hydraulic Drum |
| PARKING BRAKE | Automatic Electronic Parking Brake |
| TIRES (FRONT & REAR) | USA Trail 4.80 x 8 (Load Range B) |

STANDARD FEATURES

| | |
|------------|--|
| ELECTRICAL | DC/DC Converter |
| DISPLAY | Digital dash display with State of Charge Meter, Hour Meter, Speedometer |

www.cushman.com

©2017 Textron Inc. All rights reserved. Features and specifications of the vehicles are subject to change without notice. Vehicle as photographed may include options not included on base model.

60014-G2 (Rev. 10/2017)



REFRESHER[®] OASIS[™]

DRIVE REVENUE WITH SUPERIOR TECHNOLOGY.

The Refresher Oasis was built for long days and busy events with its industry-leading can capacity and enough merchandising space for all your most popular items. With an ELiTE lithium powertrain activated by Samsung SDI battery technology or a fuel-efficient 13.5 hp EFI gas engine, the Refresher Oasis pushes unparalleled customer service.

500 CAN
CAPACITY

12.1 SQ FT
COUNTER SPACE

6.7 CU FT
MERCHANDISE CABINET

ELiTE
LITHIUM



ELiTE LITHIUM POWERTRAIN

- Zero Maintenance
- 5-Year Battery Warranty
- Lightweight Footprint
- Increased Efficiency
- Upgrade to 6.2 Triple Pack for Extended Range

OPTIONS & ACCESSORIES

- Trash/Recycle Bins
- Aluminum Canopy Frame
- Color Options Available for Canopy, Unit & Vehicle
- 3.0 Liter Airpots (2)
- Reversible Airpot Holder
- Humidor
- Consumable Ice Bin
- NSF Rated Ice Sink
- Unique Drainage
- Wheel Covers
- Turf Tires
- USB Outlet
- Glove Box Door and Shelf
- LED Headlights
- LED Taillights/Brake Lights
- Rapid On-Board Charger (ELiTE Only)

CUSHMAN.COM

REFRESHER® OASIS™

ELiTE LITHIUM

EFI GAS

BODY & CHASSIS

| | |
|----------------|--|
| FRAME | Welded Steel with E-Coat & DuraShield™ Powder Coat |
| BODY & FINISH | Injection Molded TPO, Painted (Front) |
| STANDARD COLOR | Forest Green |

DIMENSIONS

| | |
|------------------------------|----------------------|
| OVERALL LENGTH | 117.0 in (297.18 cm) |
| OVERALL WIDTH | 50.8 in (129.032 cm) |
| OVERALL HEIGHT (NO CANOPY) | 47.4 (120.40 cm) |
| OVERALL HEIGHT (WITH CANOPY) | 73.3 in (186.18 cm) |
| WHEEL BASE | 76 in (193.04 cm) |
| FRONT WHEEL TRACK | 35 in (88.90 cm) |
| REAR WHEEL TRACK | 38.5 in (97.79 cm) |
| GROUND CLEARANCE | 4.5 in (11.43 cm) |

| | |
|------------------------------------|--|
| REFRESHER UNIT MATERIAL AND FINISH | 5000 Series Aluminum - Super Durable TGIC Polyester Powder Coating |
|------------------------------------|--|

POWER

| | | |
|--------------------|---------------------------------|--|
| POWER SOURCE | 56.7 V Li-Ion Battery | 4 Cycle 24.5 cu in (401 cc) |
| MOTOR TYPE | AC Induction | N/A |
| VALVE TRAIN | N/A | Single Cylinder OHV |
| HORSEPOWER (KW) | 14.9 hp (11.1 kW) | 13.5 hp (10.1 kW) |
| ELECTRICAL SYSTEM | 48V Primary, 12V Auxiliary | Starter/Generator, Solid-State Regulator |
| BATTERY (QTY/TYPE) | 4.2 ELiTE - Twin Pack | One 12 Volt Maintenance Free |
| BATTERY CHARGER | 811 Watt World Charger | N/A |
| KEY OR PEDAL START | Pedal | Pedal |
| AIR CLEANER | N/A | Industrial Rated Dry Filter |
| LUBRICATION | N/A | Pressurized Oil System |
| OIL FILTER | N/A | Spin-On |
| COOLING SYSTEM | N/A | Air Cooled |
| FUEL CAPACITY | N/A | 6.65 Gallon (25 L) tank |
| DRIVE TRAIN | Motor Shaft Direct Drive | Continuously Variable Transmission (CVT) |
| TRANSAXLE | Differential with Helical Gears | |
| GEAR SELECTION | Forward-Neutral-Reverse | Forward-Reverse |
| REAR AXLE RATIO | 16.99:1 | 16.53:1 (Forward) 16.81:1 (Reverse) |

PERFORMANCE

| | | |
|----------------------------|---------------------------------------|----------------------|
| SEATING CAPACITY | 2-Person | |
| DRY WEIGHT (W/O BATTERIES) | 1017 lb (461 kg) | 1135 lb (514.83 kg) |
| CURB WEIGHT | 1098 lb (498 kg) | 1175 lb (532.971 kg) |
| VEHICLE LOAD CAPACITY | 1134 lb (514 kg) | 1066 lb (483 kg) |
| OUTSIDE CLEARANCE CIRCLE | 21.5 ft (6.5 m) | |
| SPEED | 11 mph ± 0.5 mph (17.7 kph ± 0.8 kph) | |

STEERING & SUSPENSION

| | |
|-----------------------|---|
| STEERING | Self-Compensating Rack and Pinion |
| FRONT/REAR SUSPENSION | Leaf Springs with Hydraulic Shock Absorbers |
| SERVICE BRAKE | Rear Wheel Mechanical Self-Adjusting Drum |
| PARKING BRAKE | Self-Compensating, Single Point Engagement |
| TIRES | 18 x 8.5-8 |