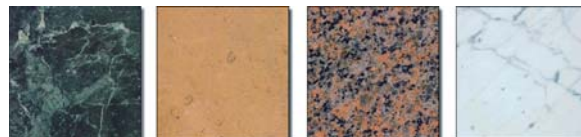




CYCLONE

Intensive Ceramic Tile / Grout Cleaner



DESCRIPTION

A heavy duty alkaline cleaner for removal of ingrained dirt, oil, grease and wax on all ceramic tile, porcelain tile and grout surfaces. CYCLONE is also a very effective grout cleaner for all polished and non-polished ceramic, porcelain and stone installations.

DIRECTIONS FOR USE

Protect all adjacent non-masonry surfaces and any polished stone surfaces that may adjoin the work surface. Thoroughly wet the surface to be cleaned prior to any application of this product. Dilute 1 part CYCLONE to 5 parts of cool to warm water (higher dilution may be required for heavy concentrations of wax or for extremely dirty grout). Apply diluted solution to the wet surface and agitate vigorously with a stiff bristle brush or natural fiber buffing pad. Allow 5 to 15 minutes dwell time depending upon the severity of the dirt.

DO NOT ALLOW SOLUTION TO DRY ON THE SURFACE.

Rinse well with clean water and continue to rinse until all the solution has been removed.

NOTES

- This product is not for use on polished marble, limestone, terrazzo, travertine or any other calcium containing stone.
- Avoid contact with anodized metals, lacquered surfaces or other sensitive areas.
- Test for suitability and appropriate dilution in a small inconspicuous area prior to general use.

SPECIFICATIONS

Color Yellow -Green
Odor Citrus
pH (Concentrate) 13.3 ± 0.5
pH (Use Dilution) 12.7 ± 0.5
Solubility Complete in Water
Specific Gravity (g/cc) 1.05 ± 0.01

Density (lbs/gal) 8.7 ± 0.1
Freeze-Thaw Stable Yes
Flash Point None
Biodegradable Yes
Ceramic Tile Cleaning Excellent
Grout Cleaning Excellent
Shelf Life 1 year minimum in original unopened container

SAFETY INFORMATION

DANGER: CAUSES SEVERE SKIN BURNS AND EYE DAMAGE. MAY CAUSE RESPIRATORY IRRITATION. KEEP OUT OF REACH OF CHILDREN.



Prevention: Do not breathe mist or vapor. Wear protective gloves/protective clothing/eye protection/face protection. Wash hands thoroughly after handling. Do not eat, drink or smoke when using this product. Use only outdoors or in a well-ventilated area.

Response: If swallowed: Rinse mouth. Do NOT induce vomiting. If on skin (or hair): Take off immediately all contaminated clothing. Rinse skin with water/shower. Wash contaminated clothing

before reuse. If inhaled: Remove person to fresh air and keep comfortable for breathing. If in eyes: Rinse cautiously with water for several minutes. Remove contact lenses, if present and easy to do. Continue rinsing. Immediately call a poison center/doctor.

Storage: Store locked up.

Disposal: Dispose of contents/container in accordance with local/regional/national/international regulations.

This product is a "Hazardous Chemical" as defined by the OSHA Hazard Communication Standard, 29 CFR 1910.1200.

For Commercial and Industrial Use Only

Warranty: Determining the suitability of this product for its intended purpose shall solely be the responsibility of the user. In the event of failure, the sole obligation of National Chemical Laboratories shall be to replace the product deemed defective. User assumes all risk and liability; neither manufacturer nor seller will be held liable for any injury or damage.



NCL® **World Class Cleaning Solutions®**

401 N. 10th Street • Philadelphia, PA 19123
1-800-NAT-CHEM • 215-922-1200 • FAX: 215-922-5517
www.nclonline.com • e-mail: info@nclonline.com

SAFETY DATA SHEET

Section 1 - Identification

Product Identifier CYCLONE Intensive Ceramic Tile / Grout Cleaner
Other means of identification 2516
Recommended use Alkaline cleaner.
Recommended restrictions For commercial and industrial use only.

Manufacturer / Importer / Supplier / Distributor Information

Company Name National Chemical Laboratories of PA, Inc.
Address 401 N. 10th Street - Philadelphia, PA 19123
Telephone 1 (215) 922-1200
Supplier Email info@nclonline.com
Contact CHEM-TEL
Emergency Phone 1 (800) 255-3924

Section 2 - Hazard(s) Identification

SDS Hazards and Warnings are based on the undiluted product. Refer to diluted SDS for Ready-To-Use Hazards and Warnings.

	Classification	Category	
Physical Hazards	Not Classified		
Health Hazards	Serious eye damage/eye irritation	1	
	Skin corrosion/irritation	1	
	Specific target organ toxicity, single exposure	3	TARGET ORGAN: respiratory tract irritation
OSHA defined hazards	Not Classified.		
Label Elements			
Hazard Symbol			
Signal Word	Danger		
Hazard Statement	Causes severe skin burns and eye damage. May cause respiratory irritation.		
Precautionary statement			
Prevention	Do not breathe mist or vapor. Wear protective gloves/protective clothing/eye protection/face protection. Wash hands thoroughly after handling. Do not eat, drink or smoke when using this product. Use only outdoors or in a well-ventilated area.		
Response	If swallowed: Rinse mouth. Do NOT induce vomiting. If on skin (or hair): Take off immediately all contaminated clothing. Rinse skin with water/shower. Wash contaminated clothing before reuse. If inhaled: Remove person to fresh air and keep comfortable for breathing. If in eyes: Rinse cautiously with water for several minutes. Remove contact lenses, if present and easy to do. Continue rinsing. Immediately call a poison center/doctor.		
Storage	Store locked up.		
Disposal	Dispose of contents/container in accordance with local/regional/national/international regulations.		
Hazard(s) not otherwise classified (HNOC)	None known.		

Section 3 - Composition/Information on ingredients

Mixture

Hazardous Components	Ingredient Name	CAS #	%
	2-Butoxyethanol	111-76-2	5 - 10
	Nonylphenol, ethoxylated	9016-45-9	1 - 5
	Sodium dimethylbenzenesulfonate	1300-72-7	1 - 5
	Sodium Hydroxide	1310-73-2	1 - 5

Section 4 - First-aid Measures

Inhalation If respiratory irritation or distress occurs, remove victim to fresh air. If breathing is difficult, give oxygen. If breathing stops, apply artificial respiration. CONSULT A PHYSICIAN.

Skin contact Remove contaminated clothing and shoes. Wash off immediately with plenty of water for at least 15 minutes. Get medical attention if irritation persists. Wash contaminated clothing before reuse.

SAFETY DATA SHEET

Eye contact	Immediately flush eyes with plenty of water for at least 20 minutes, occasionally lifting the upper and lower eyelids. Check and remove contact lenses. Continue to rinse for at least 10 minutes.
Ingestion	Rinse mouth thoroughly with water. DO NOT induce vomiting. If victim is fully conscious, give a cupful of water. Never give anything by mouth to an unconscious person. If vomiting occurs, keep head lower than the hips to help prevent aspiration. Call a physician or poison control center immediately.
Most Important symptoms /effects, acute and delayed	Causes skin and eye burns.
Indication of immediate medical attention and special treatment	Treat symptomatically.
General Information	Ensure that medical personnel are aware of the material(s) involved, and take precautions to protect themselves.

Section 5 - Fire-fighting measures

Suitable extinguishing media	Carbon dioxide, alcohol-resistant foam, dry chemical, water spray, or water fog.
Unsuitable extinguishing media	Not available.
Specific hazards arising from the chemical	None known.
Special protective equipment and precautions for firefighters	Self-contained breathing apparatus and full protective clothing must be worn in case of fire.
Fire-fighting equipment /instructions	Move containers from fire area if you can do it without risk. Use water spray to keep fire-exposed containers cool.
General fire hazards	This product is not flammable or combustible.

Section 6 - Accidental release measures

Personal precautions, protective equipment and emergency procedures.	Isolate area. Keep unnecessary personnel away. Use personal protection as recommended in Section 8 of the SDS.
Methods and materials for containment and cleaning up	SMALL SPILLAGE: Absorb spillage with suitable absorbent material. Absorb spill with vermiculite or other inert material, then place in a container for chemical waste. After removal flush contaminated area thoroughly with water. LARGE SPILLS: Absorb spill with vermiculite or other inert material, then place in a container for chemical waste. After removal flush contaminated area thoroughly with water.
Environmental precautions	Avoid discharge into drains, water courses or onto the ground.

Section 7 - Handling and storage

Precautions for safe handling	Do not get in eyes, on skin, or on clothing. Do not breathe mist or vapor. Do not taste or swallow. Use with adequate ventilation. Wash thoroughly after handling. Use Personal Protective Equipment recommended in section 8 of the SDS.
Conditions for safe storage, including any incompatibilities	Store away from incompatible materials. Keep container closed.

Section 8 - Exposure control/personal protection

Occupational exposure limits

US. OSHA Table Z-1 Limits for Air Contaminants (29 CFR 1910.1000)

Components	Type	Value
2-Butoxyethanol (CAS 111-76-2)	TWA	240 mg/m ³ , 50 ppm
Sodium Hydroxide (CAS 1310-73-2)	TWA	2 mg/m ³

US. ACGIH Threshold Limit Values

Component	Type	Value
Sodium Hydroxide (CAS 1310-73-2)	Ceiling	2 mg/m ³
2-Butoxyethanol (CAS 111-76-2)	TWA	20 ppm

US. NIOSH: Pocket Guide to Chemical Hazards

Components	Type	Value
2-Butoxyethanol (CAS 111-76-2)	TWA	24 mg/m ³ , 5 ppm
Sodium Hydroxide (CAS 1310-73-2)	Ceiling	2 mg/m ³

US. ACGIH. BEIs. Biological Exposure Indices

Components	Value	Determinate	Specimen	Sampling Time
2-Butoxyethanol (CAS 111-76-2)	200 mg/g	Butoxyacetic acid (BAA), with hydrolysis	Creatinine in urine	*

* - For sampling details, please see the source document.

Exposure guidelines	Use personal protective equipment as required. Keep working clothes separately.
----------------------------	---

US. California Code of Regulations, Title 8, Section 5155. Airborne Contaminants

Components	Exposure
2-Butoxyethanol (CAS 111-76-2)	Can be absorbed through the skin.

US. Minnesota Hazardous Substances List (Minn. Rules 5206.0400).

Components	Exposure
------------	----------

SAFETY DATA SHEET

US.NIOSH: Pocket Guide to Chemical Hazards

Component	Exposure
2-Butoxyethanol (CAS 111-76-2)	Can be absorbed through the skin.

US.OSHA Table Z-1 Limits for Air Contaminants (29 CFR 1910.100)

Components	Exposure
2-Butoxyethanol (CAS 111-76-2)	Can be absorbed through the skin.

US.OSHA Table Z-1-A (29 CFR 1910.100)

Components	Exposure
2-Butoxyethanol (CAS 111-76-2)	Can be absorbed through the skin.

US.Tennessee. OELs Occupational Exposure Limits, Table Z1A

Components	Exposure
2-Butoxyethanol (CAS 111-76-2)	Can be absorbed through the skin.

Appropriate engineering controls Provide adequate ventilation and minimize the risk of inhalation of vapors and mists. Provide easy access to water supply and eye wash facilities.

Individual protection measures, such as personal protective equipment

Eye/face protection	Wear approved chemical safety goggles.
Skin protection	
Hand protection	Wear chemical-resistant, impervious gloves. Suitable gloves can be recommended by the glove supplier.
Other	Wear appropriate chemical resistant clothing.
Respiratory protection	Use a respirator when local exhaust or ventilation is not adequate to keep exposures below the OEL. In a confined space a supplied respirator may be required.
Thermal hazards	Wear appropriate thermal protective clothing, when necessary.
General hygiene considerations	Always observe good personal hygiene measures, such as washing after handling the material and before eating, drinking, and/or smoking. Routinely wash work clothing and protective equipment to remove contaminants.

Section 9 - Physical and chemical properties

Appearance	Clear.
Physical state	Liquid.
Form	Liquid.
Color	Green.
Odor	Citrus.
Odor threshold	Not available.
pH	13.5
Melting point/freezing point	Not available.
Initial boiling point and boiling range	212 °F (100 °C)
Flash point	> 212.0 °F (> 100.0 °C)
Evaporation rate	Not available.
Flammability (solid, gas)	Not applicable.
Upper/lower flammability or explosive limits	
Flammability limit - lower (%)	Not available.
Flammability limit - upper (%)	Not available.
Explosive limit - lower (%)	Not available.
Explosive limit - upper (%)	Not available.
Vapor pressure	Similar to water.
Vapor density	Similar to water.
Relative density	1.05 ± 0.01
Relative density temperature	75 °F (23.89 °C)
Solubilities	100 % Soluble.
Partition Coefficient n-octanol/water	Not available.
Auto-ignition temperature	Not available.
Decomposition temperature	Not available.
Viscosity	< 10 cP
Viscosity Temperature	75 °F (23.89 °C)

Section 10 - Stability and reactivity

Reactivity	Not available.
Chemical stability	Stable at normal conditions.
Possibility of hazardous reactions	Hazardous polymerization does not occur.
Conditions to Avoid	Contact with incompatible materials.

SAFETY DATA SHEET

Incompatible materials Strong oxidizing agents.
Hazardous Decomposition Products Carbon monoxide. Carbon dioxide.

Section 11 - Toxicological information

Information on likely routes of exposure

Ingestion May cause burns of the gastrointestinal tract if swallowed.
Inhalation Irritating to respiratory system.
Skin contact Causes skin burns.
Eye contact Causes serious eye damage.

Symptoms related to the physical, chemical and toxicological characteristics Causes skin and eye burns. Causes respiratory tract irritation. Symptoms may be delayed.

Information on toxicological effects.

Acute toxicity May cause burns.

Components	Level	Type	Code	Species	Results
Nonylphenol, ethoxylated (CAS 9016-45-9)	Acute	Oral	LD50	Mouse	4290 mg/kg, bw
Sodium Hydroxide (CAS 1310-73-2)	Acute	Oral	LD50	Rabbit	500 mg/kg
2-Butoxyethanol (CAS 111-76-2)	Acute	Dermal	LD50	Rabbit	400 mg/kg
	Acute	Inhalation	LC50	Rat	450 mg/l, 4 hrs
	Acute	Oral	LD50	Rat	560 mg/kg
Sodium dimethylbenzenesulfonate (CAS 1300-72-7)	Acute	Dermal	LD50	Rabbit	>2000 mg/kg
	Acute	Oral	LD50	Rat	7200 mg/kg

Skin corrosion/irritation Causes skin burns.
Serious eye damage/ eye irritation Causes serious eye damage.
Respiratory sensitization Not classified.
Skin sensitization Not classified.
Germ cell mutagenicity Not classified.

IARC Monographs. Overall Evaluation of Carcinogenicity

Component	Result	Comment
2-Butoxyethanol (CAS 111-76-2)	3	Not classifiable as to carcinogenicity to humans.

Reproductive toxicity Not classified.
Specific target organ toxicity - single exposure Irritating to respiratory system.
Specific target organ toxicity - repeated exposure Not classified.
Aspiration hazard Not classified.
Chronic effects 2-Butoxy ethanol may be absorbed through the skin in toxic amounts if contact is repeated and prolonged. These effects have not been observed in humans.
Prolonged or repeated exposure may cause liver and kidney damage. These effects have not been observed in humans.

Section 12 - Ecological Information

Ecotoxicity The product contains a substance which is toxic to aquatic organisms.

Component(s)

Nonylphenol, ethoxylated, 9016-45-9

Aquatic

Acute	Crustacea	EC50	Daphnia magna	65 mg/l, 48 hours
	Crustacea	EC50	Water flea (Daphnia magna)	12.2 mg/l, 48 hours
	Fish	LC50	Bluegill (Lepomis macrochirus)	1 - 1.8 mg/l 96 hours

Persistence and degradability The product is expected to be biodegradable.

Bioaccumulative potential Not known.

Partition coefficient n-octanol / water log (Kow)

Components	Results
2-Butoxyethanol (CAS 111-76-2)	0.83

Mobility in soil Not available.

Mobility in general The product is water soluble and may spread in water systems.

Other adverse effects None known.

Section 13 - Disposal considerations

Disposal instructions Dispose in accordance with applicable federal, state, and local regulations.

Local disposal regulations Dispose of in accordance with local regulations.

SAFETY DATA SHEET

Hazardous waste code	Waste codes should be assigned by the user based on the application for which the product was used.
Waste from residues / unused products	Dispose in accordance with all applicable regulations.
Contaminated packaging	Since emptied containers may retain product residue, follow label warnings even after container is emptied.

Section 14 - Transport information

DOT

UN number	UN1824
Proper shipping name	SODIUM HYDROXIDE SOLUTION
Transport hazard class(es)	8
Packing group	II
Special precautions for user	Read safety instructions, SDS and emergency procedures before handling.
Special provisions	B2, IB2, N34, T7, TP2
Packaging exemption	154
Packaging non bulk	202
Packaging bulk	242

IATA

UN number	UN1824
UN proper shipping name	SODIUM HYDROXIDE SOLUTION
Transport hazard class(es)	8
Packaging group	II
Environmental hazards	No.
ERG Code	8L
Special precautions for user	Read safety instructions, SDS and emergency procedures before handling.
Other Information	

IMDG

UN number	UN1824
UN proper shipping name	SODIUM HYDROXIDE SOLUTION
Transport hazard class(es)	8
Packaging group	II
Environmental hazards	No.
Marine pollutant	
EmS	F-A, S-B
Special precautions for user	Read safety instructions, SDS and emergency procedures before handling.

Transportation in bulk according to Annex II of MARPOL 73/78 and IBC Code This substance/mixture is not intended to be transported in bulk.

Section 15 - Regulatory Information

US federal regulations This product is a "Hazardous Chemical" as defined by the OSHA Hazard Communication Standard, 29 CFR 1910.1200.

TSCA Section 12(b) Export Notification (40 CFR707, Subpt. D) Not regulated.

US. OSHA Specifically Regulated Substances (29 CFR 1910.1001-1050) Not listed.

CERCLA Hazardous Substance List (40 CFR 302.4)

Components	Result
Sodium Hydroxide (CAS 1310-73-2)	LISTED
2-Butoxyethanol (CAS 111-76-2)	LISTED

Superfund Amendments and Reauthorization Act of 1986 (SARA)

Hazard Categories	Immediate Hazard	Yes
	Delayed Hazard	No
	Fire Hazard	No
	Pressure Hazard	No
	Reactivity Hazard	No

SARA 302 Extremely hazardous substance Not listed.

SARA 311/312 Hazardous chemical Yes

SARA 313 (TRI reporting) Not regulated.

Chemical name	CAS #	% by wt.
2-Butoxyethanol	111-76-2	5 - 10

Other federal regulations

Clean Air Act (CAA) Section 112 Hazardous Air Pollutants (HSPs) List Not regulated.

Clean Air Act (CAA) Section 112(r) Accidental Release Prevention (40 CFR 68.130) Not regulated.

Safe Drinking Water Act (SDWA) Not regulated.

Food and Drug Administration (FDA) Not regulated.

SAFETY DATA SHEET

US state regulations

US.Massachusetts RTK - Substance List	Components Sodium Hydroxide (CAS 1310-73-2) 2-Butoxyethanol (CAS 111-76-2)
US.New Jersey Worker and Community Right-to-Know Act	Components Sodium Hydroxide (CAS 1310-73-2) 2-Butoxyethanol (CAS 111-76-2)
US.Pennsylvania RTK - Hazardous Substances	Components Sodium Hydroxide (CAS 1310-73-2) 2-Butoxyethanol (CAS 111-76-2)
US.Rhode Island RTK	Components Sodium Hydroxide (CAS 1310-73-2) 2-Butoxyethanol (CAS 111-76-2)

US - California Proposition 65

International Inventories

Country(s) or region	Inventory Name	On Inventory (yes/no)*
Australia	Australian Inventory of Chemical Substances (AICS)	No
Canada	Domestic Substances List (DSL)	No
Canada	Non-Domestic Substances List (NDSL)	No
China	Inventory of Existing Chemical Substances in China (IECSC)	Yes
Europe	European Inventory of Existing Commercial Chemical Substances (EINECS)	No
Europe	European List of Notified Chemical Substances (ELINCS)	No
Japan	Inventory of Existing and New Chemical Substances (ENCS)	No
Korea	Existing Chemicals List (ECL)	No
New Zealand	New Zealand Inventory	Yes
Philippines	Philippine Inventory of Chemicals and Chemical Substances	Yes
Unites States Puerto Rico	Toxic Substances Control Act (TSCA) Inventory	No

*A "Yes" indicates this product complies with the inventory requirements administered by the governing country(s).

*A "No" indicates that one or more components of the product are not listed or exempt from listing on the inventory administered by the governing country(s).

Section 16 - Other information, including date of preparation or last version

Issue date	5/22/2014
Version #	01
Disclaimer	The information contained herein was obtained from current and reliable sources. However, the data is provided without any warranty, expressed or implied, regarding its correctness or accuracy. Since the conditions for use, handling, storage and disposal of this product are beyond the manufacturer's control, it is the user's responsibility both to determine safe conditions for use of this product and to assume liability for loss, injury, damage or expense arising from the product's improper use. No warranty, expressed or implied, regarding the product described herein shall be created by or inferred from any statement or omission in this SDS. Various government agencies may have specific regulations concerning the transportation, handling, storage, use or disposal of this product which may not be reflected in this SDS. The user should review these regulations to ensure full compliance.

CYCLONE™ Intensive Ceramic Tile / Grout Cleaner

A heavy duty alkaline cleaner for removal of ingrained dirt, oil, grease and wax on all ceramic tile, porcelain tile and grout surfaces. CYCLONE™ is also a very effective grout cleaner for all polished and non-polished ceramic, porcelain and stone installations.

- Extra Strength
- Removes heavy soil from all ceramic and porcelain tile
- Non-Acid formula

Directions:

Protect all adjacent non-masonry surfaces and any polished stone surfaces that may adjoin the work surface. Dilute 1 part CYCLONE™ to 5 parts of cool to warm water (higher dilution may be required for heavy concentrations of wax or for extremely dirty grout). Apply diluted solution to the wet surface and agitate vigorously with a stiff bristle brush or natural fiber buffing pad. Allow 5 to 15 minutes dwell time depending upon the severity of the dirt. DO NOT ALLOW SOLUTION TO DRY ON THE SURFACE. Rinse well with clean water and continue to rinse until all the solution has been removed.

IMPORTANT NOTES:

- This product is not for use on polished marble, limestone, terrazzo, travertine or any other calcium containing stone.
- Avoid contact with anodized metals, lacquered surfaces or other sensitive areas.
- Test for suitability and appropriate dilution in a small inconspicuous area prior to general use.

Instrucciones para Uso:

Proteger todas las no superficies adyacentes de la albañilería y cualquier superficie de piedra pulida que puedan colindar la superficie de trabajo. Diluir CYCLONE™ de 1 porción a 5 porciones de fresco para calentar el agua. (una dilución más alta se puede requerir para las concentraciones pesadas de la cera o para la lechada extremadamente sucia). Aplicar la solución diluida a la superficie mojada y agitarla vigoroso con un cojín que pulimenta del cepillo de cerda tieso o de la fibra natural. Dar un plazo del tiempo de detención de 5 a 15 minutos dependiendo de la severidad de la suciedad. NO PERMITIR QUE LA SOLUCIÓN SE SEQUE EN LA SUPERFICIE. Aclarar bien con agua limpia y continuar aclarando hasta que se ha quitado toda la solución.

NOTAS IMPORTANTES:

- Este producto no está para el uso en el mármol pulido, la piedra caliza, el terrazzo, el travertine o ningún otro calcio conteniendo la piedra.
- Evitar el contacto con los metales anodizados, las superficies laqueadas u otras áreas sensibles.
- Probar para la conveniencia y la dilución apropiada en un área discreta pequeña antes de uso general.

CONTAINS: Nonylphenol, Ethoxylated CAS# 9016-45-9, Sodium Hydroxide CAS# 1310-73-2, 2-Butoxyethanol CAS# 111-76-2, Sodium Dimethyl Benzene Sulfonate CAS# 1300-72-7

Warranty: Determining the suitability of this product for its intended purpose shall solely be the responsibility of the user. In the event of failure, the sole obligation of National Chemical Laboratories shall be to replace the product deemed defective. User assumes all risk and liability; neither manufacturer nor seller will be held liable for any injury or damage.



Floor Coating and Finishing
Material as to Slip
Resistance Only 18 EL

★★ MADE IN USA ★★

2516-29-0814



FOR COMMERCIAL AND
INDUSTRIAL USE ONLY
QUESTIONS?
Call (800) 628-2436



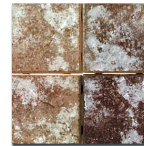
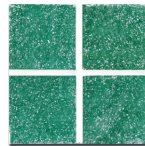
To learn more
about this
product, scan
this QR code to
visit our website.



CYCLONE™

INTENSIVE CERAMIC TILE / GROUT CLEANER

A heavy duty alkaline cleaner for removal of
ingrained dirt, oil, grease and wax on all ceramic
tile, porcelain tile and grout surfaces.



Stone Care Solutions™

DANGER: CAUSES SEVERE SKIN BURNS AND EYE DAMAGE.

See side panel for additional precautionary statements

PELIGRO: PROVOCA GRAVES QUEMADURAS EN LA PIEL Y LESIONES OCULARES.

Ver panel lateral para las medidas preventivas adicionales.

Net Contents: 1 Gallon (3.79 Liters)



World Class Cleaning Solutions

Product Code # 2516



DANGER:
CAUSES SEVERE SKIN BURNS
AND EYE DAMAGE. MAY CAUSE
RESPIRATORY IRRITATION.

Precautionary statement

Prevention: Do not breathe mist or vapor. Wear protective gloves/protective clothing/eye protection/face protection. Wash hands thoroughly after handling. Do not eat, drink or smoke when using this product. Use only outdoors or in a well-ventilated area.

Response: If swallowed: Rinse mouth. Do NOT induce vomiting. If on skin (or hair): Take off immediately all contaminated clothing. Rinse skin with water/shower. Wash contaminated clothing before reuse. If inhaled: Remove person to fresh air and keep comfortable for breathing. If in eyes: Rinse cautiously with water for several minutes. Remove contact lenses, if present and easy to do. Continue rinsing. Immediately call a poison center/doctor.

Storage: Store locked up.

Disposal: Dispose of contents/container in accordance with local/regional/national/international regulations.

This product is a "Hazardous Chemical" as defined by the OSHA Hazard Communication Standard, 29 CFR 1910.1200.

Additional safety measures:

Read the entire label and SDS before using this product, and for additional first aid measures. SDS for this product is available on the web at www.ncnline.com

Inhalation: If respiratory irritation or distress occurs, remove victim to fresh air. If breathing is difficult, give oxygen. If breathing stops, apply artificial respiration. CONSULT A PHYSICIAN.

Skin contact: Remove contaminated clothing and shoes. Wash off immediately with plenty of water for at least 15 minutes. Get medical attention. Wash contaminated clothing before reuse.

Eye contact: Immediately flush eyes with plenty of water for at least 20 minutes, occasionally lifting the upper and lower eyelids. Check and remove contact lenses. Continue to rinse for at least 10 minutes.

Ingestion: Rinse mouth thoroughly with water. DO NOT induce vomiting. If victim is fully conscious, give a cupful of water. Never give anything by mouth to an unconscious person. If vomiting occurs, keep head lower than the hips to help prevent aspiration. Call a physician or poison control center immediately.

PELIGRO
PROVOCA GRAVES QUEMADURAS EN LA PIEL Y LESIONES OCULARES.
PUEDE IRRITAR LAS VIAS RESPIRATORIAS.

Consejos de prudencia

Prevención: No respire neblina o vapor. Usar guantes /indumentaria protectora/equipo de protección para los ojos/la cara. Lavarse las manos cuidadosamente después de la manipulación. No comer, beber o fumar al manipular el producto. Usar sólo al aire libre o en lugar bien ventilado.

Respuesta: En caso de ingestión: Enjuagar la boca. NO provocar el vómito. En caso de contacto con la piel (o el pelo): Quitarse inmediatamente toda la ropa contaminada. Enjuagar la piel con agua o tomar un baño. Lave la ropa contaminada antes de volver a usar. En caso de inhalación: Transportar la persona al aire libre y mantenerla en una posición que le facilite la respiración. En caso de contacto con los ojos: Enjuague cuidadosamente con agua durante varios minutos. Qúitese los lentes de contacto, si los usa y si puede hacerse con facilidad. Continué enjuagando. Llamar inmediatamente a un centro de toxicología o a un médico.

Almacenamiento: Guardar bajo llave.

Eliminación: Eliminación de contenidos / contenedor en consonancia con los reglamentos locales / regionales / nacionales / internacionales pertinentes.

Este producto es calificado como "químicamente peligroso" según el Estándar de Comunicación de Riesgos de la OSHA Hazard Communication Standard, 29 CFR 1910.1200.

Medidas additional de primeros auxilios:

Lea toda la etiqueta y SDS antes de usar este producto, así como medidas adicionales de primeros auxilios. SDS para el artículo está disponible en la web en www.ncnline.com

Inhalación: En caso de irritación o insuficiencia respiratoria, deberá trasladarse a la víctima al aire libre. Si la respiración es dificultosa, administre oxígeno. Si se detiene la respiración, administre respiración artificial. CONSULTE A UN MEDICO.

Contacto cutáneo: Quitar ropa y zapatos contaminados. Lave inmediatamente con mucha agua por lo menos durante 15 minutos. Consequir atención médica. Lave la ropa contaminada antes de volver a usar. Elimine o limpie a fondo todo zapato contaminado.

Contacto ocular: Enjuague inmediatamente los ojos con abundante agua durante al menos 20 minutos, al mismo tiempo levante ocasionalmente los párpados superiores e inferiores. Revise y quítese los lentes de contacto. Continué enjuagando durante al menos 10 minutos.

Ingestión: Enjuáguese la boca cuidadosamente con agua. NO inducir el vómito. Si la víctima está totalmente consciente, déle a beber un vaso de agua. Nunca administre nada por la boca a una persona inconsciente. Si ocurre vómito, mantenga la cabeza de la persona más baja que las caderas a fin de evitar la aspiración. Llame inmediatamente a un médico o centro de control de envenenamiento.



World Class Cleaning Solutions®

401 N. 10th Street • Philadelphia, PA 19123
1-800-NAT-CHEM • 215-922-1200 • FAX: 215-922-5517
www.ncnline.com • e-mail: info@ncnline.com