



# EARTH SENSE® LAVENDER MORNING Foaming Hand Cleaner

## DESCRIPTION

Afia™ EARTH SENSE® LAVENDER MORNING Foaming Hand Cleaner is an environmentally responsible, “certified green” foaming hand cleaner made with no phosphates or nonylphenol ethoxylate surfactants. EARTH SENSE® LAVENDER MORNING Foaming Hand Cleaner is formulated with no VOC's, no silicates, no chelating agents or caustics and is biodegradable. Used with the Afia™ Hand Cleaner Dispenser, this product creates a rich lather that leaves hands clean, fresh and is gentle to even sensitive skin. Designed for maximum efficiency, EARTH SENSE® LAVENDER MORNING Foaming Hand Cleaner reduces overall amount of product used, resulting in less impact to the environment. Use EARTH SENSE® LAVENDER MORNING Foaming Hand Cleaner in: Schools, Universities, Institutions and Office Buildings. This environmentally responsible formulation meets the Green Seal™ Standard GS-41 for Institutional Hand Cleaners and has been “certified” by Green Seal.

## PRODUCT FEATURES / BENEFITS

- Environmentally Responsible / Ingredients are biodegradable
- Lavender Morning Fragrance / Improved user acceptance and increases frequency of hand washing.
- Rich foam / Spreads easily and dries quickly.
- Made with no harsh solvents or skin irritants / Safer for building guests

## DIRECTIONS FOR USE

### ADDING PRODUCT TO THE DISPENSER

1. Push valve end of bag down onto the pump assembly. (figure 1).
2. Press down on the plastic connector until the bag is fully pressed down and the pump is inserted completely into the pouch (see figure 2).
3. If needed, gently tuck the corners of the bag to ensure complete closure of dispenser cover.
4. Frequent hand washing is one of the simplest and most effective ways to maintain health. EARTH SENSE® LAVENDER MORNING Foaming Hand Cleaner will leave hands clean and fresh.

Dispense product into palm of hand. Lather and scrub for 20 seconds. Rinse with clean water.

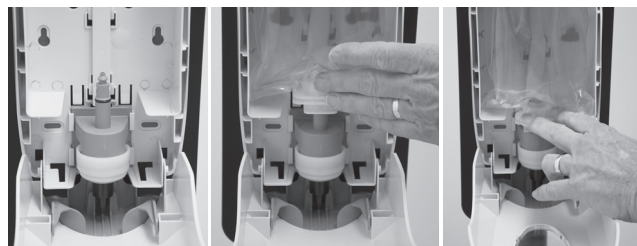


Figure 1

Figure 2

## SPECIFICATIONS

Appearance ..... Clear Liquid  
Color ..... Colorless  
Fragrance ..... Lavender  
Specific Gravity (g/cc)..... 1.01 ± 0.01  
Density (lbs/gal)..... 8.4 ± 0.1  
Flash Point..... None  
pH ..... 7.0 ± 0.4

Biodegradable ..... Readily  
Environmentally Responsible ..... Yes  
Added Fragrance..... Yes  
Nonylphenol Ethoxylates ..... None  
Phosphates..... None  
Caustics..... None  
Shelf Life..... 1 year minimum in original unopened container

## SAFETY INFORMATION

**KEEP OUT OF THE REACH OF CHILDREN.**

### Precautionary statement

**Prevention:** Observe good industrial hygiene practices.

**Response:** Wash hands after handling.

**Storage:** Store away from incompatible materials.

**Disposal:** Dispose of contents/container in accordance with local authority requirements.

This product is not known to be a “Hazardous Chemical” as defined by the OSHA Hazard Communication Standard, 29 CFR 1910.1200.

All components are on the U.S. EPA TSCA Inventory List.

### Additional safety measures:

Read the entire label and SDS before using this product, and for additional first-aid measures. SDS for this product is available on the web at [www.nclonline.com](http://www.nclonline.com)



HAND CARE



This product meets Green Seal™ Standard GS-41A based on effective performance and protective limits on VOCs and human & environmental toxicity. [GreenSeal.org](http://GreenSeal.org)



**World Class Cleaning Solutions®**

401 N. 10th Street • Philadelphia, PA 19123  
1-800-NAT-CHEM • 215-922-1200 • FAX: 215-922-5517  
[www.nclonline.com](http://www.nclonline.com) • e-mail: [info@nclonline.com](mailto:info@nclonline.com)



TDS-0434-0617

## SAFETY DATA SHEET

### Section 1 - Identification

**Product Identifier** Afia™ Earth Sense® Lavender Morning™ Foaming Hand Cleaner  
**Other means of identification** 0434  
**Recommended use** Hand soap.  
**Recommended restrictions** For commercial and industrial use only.

**Manufacturer / Importer / Supplier / Distributor Information**

**Company Name** National Chemical Laboratories of PA, Inc.  
**Address** 401 N. 10th Street - Philadelphia, PA 19123  
**Telephone** 1 (215) 922-1200  
**Supplier Email** info@ncnline.com  
**Contact** CHEM-TEL  
**Emergency Phone** 1 (800) 255-3924

### Section 2 - Hazard(s) Identification

	Classification	Category
<b>Physical Hazards</b>	Not Classified	
<b>Health Hazards</b>	Not Classified	
<b>OSHA defined hazards</b>	Not Classified.	
<b>Label Elements</b>		
<b>Hazard Symbol</b>	None.	
<b>Signal Word</b>	None	
<b>Hazard Statement</b>	The mixture does not meet the criteria for classification.	
<b>Precautionary statement</b>		
<b>Prevention</b>	Observe good industrial hygiene practices.	
<b>Response</b>	Wash hands after handling.	
<b>Storage</b>	Store away from incompatible materials.	
<b>Disposal</b>	Dispose of waste and residues in accordance with local authority requirements.	
<b>Hazard(s) not otherwise classified (HNOC)</b>	None known.	

### Section 3 - Composition/Information on ingredients

Mixture

**Composition Comments** Components not listed are either non-hazardous or are below reportable limits.

### Section 4 - First-aid Measures

<b>Inhalation</b>	Move to fresh air. Get medical attention if irritation persists.
<b>Skin contact</b>	Wash off with water. Get medical attention if irritation persists.
<b>Eye contact</b>	Rinse with water. Get medical attention if irritation persists.
<b>Ingestion</b>	Rinse mouth. Get medical attention if irritation persists.
<b>Most Important symptoms / effects, acute and delayed</b>	Direct contact with eyes may cause temporary irritation.
<b>Indication of immediate medical attention and special treatment</b>	Provide general supportive measures and treat symptomatically. Keep victim under observation. Symptoms may be delayed.
<b>General Information</b>	Ensure that medical personnel are aware of the material(s) involved, and take precautions to protect themselves.

### Section 5 - Fire-fighting measures

<b>Suitable extinguishing media</b>	Water fog. Foam. Dry chemical powder. Carbon dioxide (CO2).
<b>Unsuitable extinguishing media</b>	Do not use water jet as an extinguisher, as this will spread the fire.
<b>Specific hazards arising from the chemical</b>	During fire, gases hazardous to health may be formed.
<b>Special protective equipment and precautions for firefighters</b>	Self-contained breathing apparatus and full protective clothing must be worn in case of fire.

# SAFETY DATA SHEET

<b>Fire-fighting equipment /instructions</b>	Move containers from fire area if you can do it without risk.
<b>General fire hazards</b>	No unusual fire or explosion hazards noted.
<b>Specific Methods</b>	Use standard firefighting procedures and consider the hazards of other involved materials.

## Section 6 - Accidental release measures

<b>Personal precautions, protective equipment and emergency procedures.</b>	Keep unnecessary personnel away. Keep people away from and upwind of spill/leak. Keep out of low areas. Wear appropriate protective equipment and clothing during clean-up. Do not touch damaged containers or spilled material unless wearing appropriate protective clothing. Ensure adequate ventilation. For personal protection, see section 8 of the SDS.
<b>Methods and materials for containment and cleaning up</b>	This product is miscible in water. SMALL SPILLS Wipe up with absorbent material (e.g. cloth, fleece). Clean surface thoroughly to remove residual contamination. LARGE SPILLS: Stop the flow of material, if this is without risk. Dike the spilled material, where this is possible. Absorb in vermiculite, dry sand or earth and place into containers. Prevent entry into waterways, sewer, basements or confined areas. Following product recovery, flush area with water. Never return spills to original containers for re-use. For waste disposal, see section 13 of the SDS.
<b>Environmental precautions</b>	Avoid discharge into drains, water courses or onto the ground.

## Section 7 - Handling and storage

<b>Precautions for safe handling</b>	Observe good industrial hygiene practices.
<b>Conditions for safe storage, including any incompatibilities</b>	Store in original tightly closed container. Store away from incompatible materials (see Section 10 of the SDS).

## Section 8 - Exposure control/personal protection

<b>Occupational exposure limits</b>	No exposure limits noted for ingredient(s).
<b>Biological limit values</b>	No biological exposure limits noted for the ingredient(s).
<b>Appropriate engineering controls</b>	Good general ventilation (typically 10 air changes per hour) should be used. Ventilation rates should be matched to conditions. If applicable, use process enclosures, local exhaust ventilation, or other engineering controls to maintain airborne levels below recommended exposure limits. If exposure limits have not been established, maintain airborne levels to an acceptable level. Provide eyewash station
<b>Individual protection measures, such as personal protective equipment</b>	
<b>Eye/face protection</b>	Wear safety glasses with side shields (or goggles).
<b>Skin protection</b>	
<b>Hand protection</b>	Wear appropriate resistant gloves for prolonged use. Applicable for industrial settings only.
<b>Other</b>	Not available.
<b>Respiratory protection</b>	In case of insufficient ventilation, wear suitable respiratory equipment.
<b>Thermal hazards</b>	Wear appropriate thermal protective clothing, when necessary.
<b>General hygiene considerations</b>	Always observe good personal hygiene measures, such as washing after handling the material and before eating, drinking, and/or smoking. Routinely wash work clothing and protective equipment to remove contaminants.

## Section 9 - Physical and chemical properties

<b>Appearance</b>	Clear, colorless liquid.
<b>Physical state</b>	Liquid.
<b>Form</b>	Thin Liquid.
<b>Color</b>	Colorless.
<b>Odor</b>	Lavender. Fragrance added.
<b>Odor threshold</b>	Not available.
<b>pH</b>	7.0 ± 0.4
<b>Melting point/freezing point</b>	Not available.
<b>Initial boiling point and boiling range</b>	212 °F (100 °C)
<b>Flash point</b>	> 212.0 °F (> 100.0 °C)
<b>Evaporation rate</b>	Not available.
<b>Flammability (solid, gas)</b>	Not available.
<b>Upper/lower flammability or explosive limits</b>	
<b>Flammability limit - lower (%)</b>	Not available.
<b>Flammability limit - upper (%)</b>	Not available.
<b>Explosive limit - lower (%)</b>	Not available.
<b>Explosive limit - upper (%)</b>	Not available.
<b>Vapor pressure</b>	Similar to water.
<b>Vapor density</b>	Similar to water.
<b>Relative density</b>	1.01 ± 0.01

# SAFETY DATA SHEET

Relative density temperature	75 °F (23.89 °C)
Solubilities	100 % Soluble.
Partition Coefficient n-octanol/water	Not available.
Auto-ignition temperature	Not Available.
Decomposition temperature	Not Available.
Viscosity	<10 cSt
Viscosity Temperature	75 °F (23.89 °C)

## Section 10 - Stability and reactivity

Reactivity	The product is stable and non-reactive under normal conditions of use, storage and transport.
Chemical stability	Material is stable under normal conditions.
Possibility of hazardous reactions	No dangerous reaction known under conditions of normal use.
Conditions to Avoid	Contact with incompatible materials.
Incompatible materials	Strong oxidizing agents.
Hazardous Decomposition Products	No hazardous decomposition products are known.

## Section 11 - Toxicological information

### Information on likely routes of exposure

Ingestion	Expected to be a low ingestion hazard.
Inhalation	No adverse effects due to inhalation are expected.
Skin contact	No adverse effects due to skin contact are expected.
Eye contact	Direct contact with eyes may cause temporary irritation.

Symptoms related to the physical, chemical and toxicological characteristics Direct contact with eyes may cause temporary irritation.

### Information on toxicological effects.

Acute toxicity	Not expected to be acutely toxic.
Skin corrosion/irritation	Prolonged skin contact may cause temporary irritation.
Serious eye damage/ eye irritation	Direct contact with eyes may cause temporary irritation.
Respiratory sensitization	This product is not expected to cause respiratory sensitization.
Skin sensitization	This product is not expected to cause skin sensitization.
Germ cell mutagenicity	No data available to indicate product or any components present at greater than 0.1% are mutagenic or genotoxic.
Carcinogenicity	This product is not considered to be a carcinogen by IARC, ACGIH, NTP, or OSHA.
Reproductive toxicity	This product is not expected to cause reproductive or developmental effects.
Specific target organ toxicity - single exposure	Not classified.
Specific target organ toxicity - repeated exposure	Not classified.
Aspiration hazard	Not classified.
Chronic effects	Prolonged inhalation may be harmful.

## Section 12 - Ecological Information

Ecotoxicity	The product is not classified as environmentally hazardous. However, this does not exclude the possibility that large or frequent spills can have a harmful or damaging effect on the environment.
Persistence and degradability	No data is available on the degradability of this product.
Bioaccumulative potential	No data available.
Mobility in soil	No data available.
Other adverse effects	No other adverse environmental effects (e.g. ozone depletion, photochemical ozone creation potential, endocrine disruption, global warming potential) are expected from this component.

## Section 13 - Disposal considerations

Disposal instructions	Dispose in accordance with applicable federal, state, and local regulations.
Local disposal regulations	Dispose of in accordance with local regulations.
Hazardous waste code	Waste codes should be assigned by the user based on the application for which the product was used.
Waste from residues / unused products	Dispose in accordance with all applicable regulations.
Contaminated packaging	Since emptied containers may retain product residue, follow label warnings even after container is emptied.

# SAFETY DATA SHEET

## Section 14 - Transport information

DOT	Not regulated as dangerous goods.
IATA	Not regulated as dangerous goods.
IMDG	Not regulated as dangerous goods.
Transportation in bulk according to Annex II of MARPOL 73/78 and IBC Code	This substance/mixture is not intended to be transported in bulk.

## Section 15 - Regulatory Information

US federal regulations	This product is not known to be a "Hazardous Chemical" as defined by the OSHA Hazard Communication Standard, 29 CFR 1910.1200. All components are on the U.S. EPA TSCA Inventory List.	
TSCA Section 12(b) Export Notification (40 CFR 707, Subpt. D)		Not regulated.
US. OSHA Specifically Regulated Substances (29 CFR 1910.1001-1050)		Not listed.
CERCLA Hazardous Substance List (40 CFR 302.4)		Not listed.
Superfund Amendments and Reauthorization Act of 1986 (SARA)		
Hazard Categories	Immediate Hazard	No
	Delayed Hazard	No
	Fire Hazard	No
	Pressure Hazard	No
	Reactivity Hazard	No
SARA 302 Extremely hazardous substance		Not listed.
SARA 311/312 Hazardous chemical		No
SARA 313 (TRI reporting)		Not regulated.
Other federal regulations		
Clean Air Act (CAA) Section 112 Hazardous Air Pollutants (HSPs) List		Not regulated.
Clean Air Act (CAA) Section 112(r) Accidental Release Prevention (40 CFR 68.130)		Not regulated.
Safe Drinking Water Act (SDWA)	Not regulated.	
Food and Drug Administration (FDA)	Not regulated.	
US state regulations		
US.Massachusetts RTK - Substance List		Not regulated.
US.New Jersey Worker and Community Right-to-Know Act		Not listed.
US.Pennsylvania RTK - Hazardous Substances		Not listed.
US.Rhode Island RTK		Not regulated.
US - California Proposition 65		California Safe Drinking Water and Toxic Enforcement Act of 1986 (Proposition 65): This material is not known to contain any chemicals currently listed as carcinogens or reproductive toxins.
International Inventories		
Country(s) or region	Inventory Name	On Inventory (yes/no)*
Australia	Australian Inventory of Chemical Substances (AICS)	Yes
Canada	Domestic Substances List (DSL)	Yes
Canada	Non-Domestic Substances List (NDSL)	No
China	Inventory of Existing Chemical Substances in China (IECSC)	Yes
Europe	European Inventory of Existing Commercial Chemical Substances (EINECS)	No
Europe	European List of Notified Chemical Substances (ELINCS)	No
Japan	Inventory of Existing and New Chemical Substances (ENCS)	No
Korea	Existing Chemicals List (ECL)	Yes
New Zealand	New Zealand Inventory	Yes
Philippines	Philippine Inventory of Chemicals and Chemical Substances	Yes
Unites States Puerto Rico	Toxic Substances Control Act (TSCA) Inventory	Yes
*A "Yes" indicates this product complies with the inventory requirements administered by the governing country(s).		
*A "No" indicates that one or more components of the product are not listed or exempt from listing on the inventory administered by the governing country(s).		

## Section 16 - Other information, including date of preparation or last version

Issue date	5/25/2017
Version #	01
Disclaimer	The information contained herein was obtained from current and reliable sources. However, the data is provided without any warranty, expressed or implied, regarding its correctness or accuracy. Since the conditions for use, handling, storage and disposal of this product are beyond the manufacturer's control, it is the user's responsibility both to determine safe conditions for use of this product and to assume liability for loss, injury, damage or expense arising from the product's improper use. No warranty, expressed or implied, regarding the product described herein shall be created by or inferred from any statement or omission in this SDS. Various government agencies may have specific regulations concerning the transportation, handling, storage, use or disposal of this product which may not be reflected in this SDS. The user should review these regulations to ensure full compliance.



Earth Sense® Lavender Morning™  
Foaming Hand Cleaner

*afia*  
skin care solutions

1000mL (33.8 fl. oz.)  
Product #0434

GREEN SEAL  
CERTIFIED

L81000-0001-0434-011

**DIRECCIONES FOR USE:** Disperse product into palm of hand. Rub and scrub for 20 seconds. Rinse with clean water.

**KEEP OUT OF THE REACH OF CHILDREN.**

**Precautionary statement**

**Prevention:** Observe good industrial hygiene practices.

**Response:** Wash hands after handling. **Disposal:** Store away from incompatible materials. **Disposal:** Dispose of waste and residues in accordance with local authority requirements.

**COMMENTS:** This product contains no reportable hazardous ingredients. Lavender fragrance added.

**401 N. 10th Street**  
**Philadelphia, PA 19123**

**National Chemical Laboratories, Inc.**

**INSTRUCCIONES DE USO:** Distribuir el producto en la palma de la mano. Esfumar y masajear durante 20 segundos. Enjuague con agua limpia.

**Consejos de prudencia**

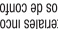

**Prevención:** Mantenga buenas prácticas de higiene industrial.

**Respuesta:** Lávese las manos después de manipular.

**Almacenamiento:** Conservar alejado de materiales incompatibles. Eliminar los desechos y residuos de conformidad con la normativa promulgada por las autoridades locales.

**Standard SS-41A passed**

This product meets Green Seal® on effective performance and product limits on VOCs and human & environmental toxicity. GreenSeal.org

7 82610 70434

401 N. 10th Street

1000mL (33.8 fl. oz.)  
Product #0434

afia™  
skin care solutions

OMEGA SEAL  
CERTIFIED

Earth Sense® Lavender Morning™  
Foaming Hand Cleaner

**DIRECCIONES FOR USE:** Disperse product into palm of hand. Rub and scrub for 20 seconds. Rinse with clean water.

**KEEP OUT OF THE REACH OF CHILDREN.**

**Precautionary statement**

**Prevention:** Observe good industrial hygiene practices.

**Response:** Wash hands after handling. Dispose of waste away from incompatible materials.

**Disposal:** Dispose of waste and residues in accordance with local authority requirements.

**COMMENTS:** This product contains no reportable hazardous ingredients. Lavender fragrance added.

**INSTRUCCIONES DE USO:** Distribuir el producto en la palma de la mano. Esfumar y motorrearse durante 20 segundos. Enjuague con agua limpia.

**Consejos de prudencia**

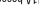

**Resistencia:** Mantenga buenas prácticas de higiene industrial.

**Respuesta:** Lávese las manos después de manipular.

**Eliminamiento:** Consérvese alejado de materiales incompatibles.

la normativa promulgada por las autoridades locales.

This product meets Green Seal® Standard SS-41 based on effective performance and protection limits on VOCs and human & environmental toxicity. GreenSeal.org

**National Chemical Laboratories, Inc.**

401 N. 10th Street  
Philadelphia, PA 19123

Earth Sense® Lavender Morning™  
Foaming Hand Cleaner

**DIRECCIONES FOR USE:** Disperse product into palm of hand. Rub and scrub for 20 seconds. Rinse with clean water.

**KEEP OUT OF THE REACH OF CHILDREN.**

**Precautionary statement**  
Observe good industrial hygiene practices.

**Response:** Wash hands after handling. **Storage:** Store away from

in accordance with local authority requirements.

**Disposal:** Dispose of waste and residues


**Prevention:** Mantenga buenas prácticas de higiene industrial.

**Respuesta:** Lávese las manos después de manipular.

**Almacenamiento:** Conservese alejado de materiales incompatibles.

**Eliminación:** Eliminar los desechos y residuos de conformidad con la normativa publicada por las autoridades locales.

This product meets Green Seal® Standard GS-14 based on effective performance and protective limits on VOCs and human & environmental toxicity. GreenSeal.org



401 N. 10th Street  
Philadelphia, PA 19123

National Chemical Laboratories, Inc.

7 52910170434

Earth Sense® Lavender Morning™  
Foaming Hand Cleaner

*afsa*  
skin care solutions

1000mL (33.8 fl. oz.)  
Product #0434-011

OMEGA SEAL  
CERTIFIED

**DIRECCIONES FOR USE:** Disperse product into palm of hand, rub and scrub for 20 seconds. Rinse with clean water.

**KEEP OUT OF THE REACH OF CHILDREN.**

**Precautionary statement:** Observe good industrial hygiene practices.

**Disposal:** Wash hands after handling. Dispose waste away from incompatible materials.


**Storage:** Store in accordance with local authority requirements.

**CONTENTS:** This product contains no reportable hazardous ingredients. Lavender fragrance added.

**401 N. 10th Street  
Philadelphia, PA 19123**

**National Chemical Laboratories, Inc.**

This product meets Green Seal® Standard GS-41A based on effective performance and product limits on VOCs and human & environmental toxicity. GreenSeal.org



**INSTRUCCIONES DE USO:** Distribuir el producto en la palma de la mano. Escurrir a matarrazos durante 20 segundos. Enjuague con agua limpia.

**MAINTENIR FUERA DEL ALCANCE DE LOS NIÑOS.**

**Consejos de prudencia**

**Respetar:** Mantenga buenas prácticas de higiene industrial. Lávase las manos después de manipular.

**Eliminación:** Eliminar los desechos y residuos de conformidad con la normativa promulgada por las autoridades locales.

**7 52610170434**

1000mL (33.8 fl. oz.)  
Product #0434-011

**DIRECCIONES FOR USE:** Disperse product into palm of hand. Rub and scrub for 20 seconds. Rinse with clean water.

**KEEP OUT OF THE REACH OF CHILDREN.**

**Precautionary statement:** Observe good industrial hygiene practices.

**Response:** Wash hands after handling. **Storage:** Store away from incompatible materials. **Disposal:** Disposal of waste and residues in accordance with local authority requirements.

**CAUTIONS:** This product contains no reportable hazardous ingredients. Lavender fragrance added.

**MAINTENENCIA FUERA DEL ALCANCE DE LOS NIÑOS.**

**Consejos de prudencia:**

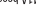
**Prevenición:** Mantenga buenas prácticas de higiene industrial.

**Respuesta:** Lávese las manos después de manipular.

**Almacenamiento:** Conserve alejado de materiales incompatibles. Eliminar los desperdicios y residuos de conformidad con la normativa ambiental publicada por las autoridades locales.

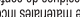
**INSTRUCCIONES DE USO:** Distribuir el producto en la palma de la mano. Esfumar y frotar durante 20 segundos. Enjuague con agua limpia.

This product meets Green Seal® Standard (GS-14) based on effective performance and protective limits on VOCs and human & environmental toxicity. GreenSeal.org



401 North Street  
Philadelphia, PA 19123

**National Chemical Laboratories, Inc.**



7 526101 70434

Earth Sense® Lavender Morning™  
Foaming Hand Cleaner

**DIRECCIONES FOR USE:** Disperse product into palm of hand. Rub and scrub for 20 seconds. Rinse with clean water.

**KEEP OUT OF THE REACH OF CHILDREN.**


**Precautionary statement:** Observe good industrial hygiene practices. Wash hands after handling. **Storage:** Store away from incompatible materials. **Disposal:** Dispose of waste and residues in accordance with local authority requirements.

**CONTENTS:** This product contains no reportable hazardous ingredients. Lavender fragrance added.

**401 N. 10th Street  
Philadelphia, PA 19123**

**National Chemical Laboratories, Inc.**

This product meets Green Seal® Standard GS-41A based on effective performance and protective limits on VOCs and human & environmental toxicity. GreenSeal.org



**INSTRUCCIONES DE USO:** Distribuir el producto en la palma de la mano. Esfumar y frotar durante 20 segundos. Enjuague con agua limpia.

**MAINTENIR FUERA DEL ALCANCE DE LOS NIÑOS.**

**Consejos de prudencia**

**Precaución:** Mantenga buenas prácticas de higiene industrial.

**Respetar:** Lávese las manos después de manipular.

**Eliminación:** Eliminar los desechos y residuos de conformidad con la normativa promulgada por las autoridades locales.

7 52610170434

