

Allsteel®

FURTHER™





Further. Where change meets choice.

Shifts in workstyles, technology, social trends, and the economy are constantly reshaping your workplace. So furniture solutions must provide flexibility and choice like never before. Offering the ability to accommodate "right now" as efficiently and seamlessly as "what if." Welcoming that change and moving your business forward is possible with Further.



Screen fabric: Appoint Morel **Laminate and edge:** Cafelle
Storage: Frosty White **Paint:** Brilliant White, Flint
Seating upholstery: Dapper Sapphire **Mesh:** Loft **Frame finish:** Black

COVER

Laminate (edge): Frosty White (White) **Storage:** Frosty White
Paint: Brilliant White, Sprout **Seating upholstery:** Inertia Loft
Back carrier (3D knit): White (Dimension™ Loft) **Frame finish:** Titanium

The shape of things to come.

You can't know exactly what the future will bring. As business priorities change, planning approaches must evolve as well. Further offers varying levels of flexibility and control as well as a variety of planning options to fit the needs of the individual, the team, and the company.



Organic

Further's trapezoid worksurface option fuels teamwork by creating more flexible configurations. This unique approach to 120-degree planning shifts the line of sight so people are not facing each other. Glass screens create an open yet focused environment. Storage with seat-cushion tops encourages impromptu interactions.

Screens: Frosted Glass **Modesty screen fabric:** Appoint Seating Espresso
Laminate and edge: Amber Cherry **Storage fronts:** Amber Cherry
Storage cases: Frosty White **Paint:** Brilliant White, Sprout
Seating upholstery: Allsteel Black Leather, Appoint Seating Lawn
Mesh carrier (mesh): Titanium (Mist) **Frame finish:** Silver



Linear

With Further, linear planning is not only possible, it's taken to a new level with elements that allow you to reimagine the rectilinear desk or bench. Upmount open shelves offer a unique storage solution that defines work areas, while writable glass screens create visual privacy.



Screens: Writable Glass **Laminate (edge):** Frosty White (White)
Storage: Amber Cherry **Paint:** Silver, Sprout
Mesh carrier (mesh): Titanium (Platinum) **Frame finish:** White



Freestanding

The agility of Further comes to life when workers have the ability to move around and change their workspace to support their activities. Power hubs and beams are freestanding, while tables dock up to the beam, creating a light-scale work bench. With power running through the hub-and-beam spine, the furniture can be rearranged without interrupting power.

Screen fabric: Dapper Breeze **Laminate (edge):** Frosty White (White)
Storage: Amber Cherry **Paint:** Silver, Sprout **Seating upholstery:** Appoint Seating Lawn
Mesh carrier (mesh): Titanium (Platinum) **Frame finish:** White

Raise your workspace to new heights.

More offices are moving to height-adjustable workstations to help increase health and wellness in the workplace. But not everyone has the need or desire for a sit-to-stand workstation. With Further Adaptive, available in linear, perpendicular, and organic layouts, the choice of comfort doesn't have to belong to just one person in the office. You can give height-adjustable workstations to those who want them, without disrupting the entire floorplan.

Perpendicular



With the Further hub-and-beam as the spine, fully integrate height adjustability or use freestanding Altitude® height-adjustable tables.

Organic



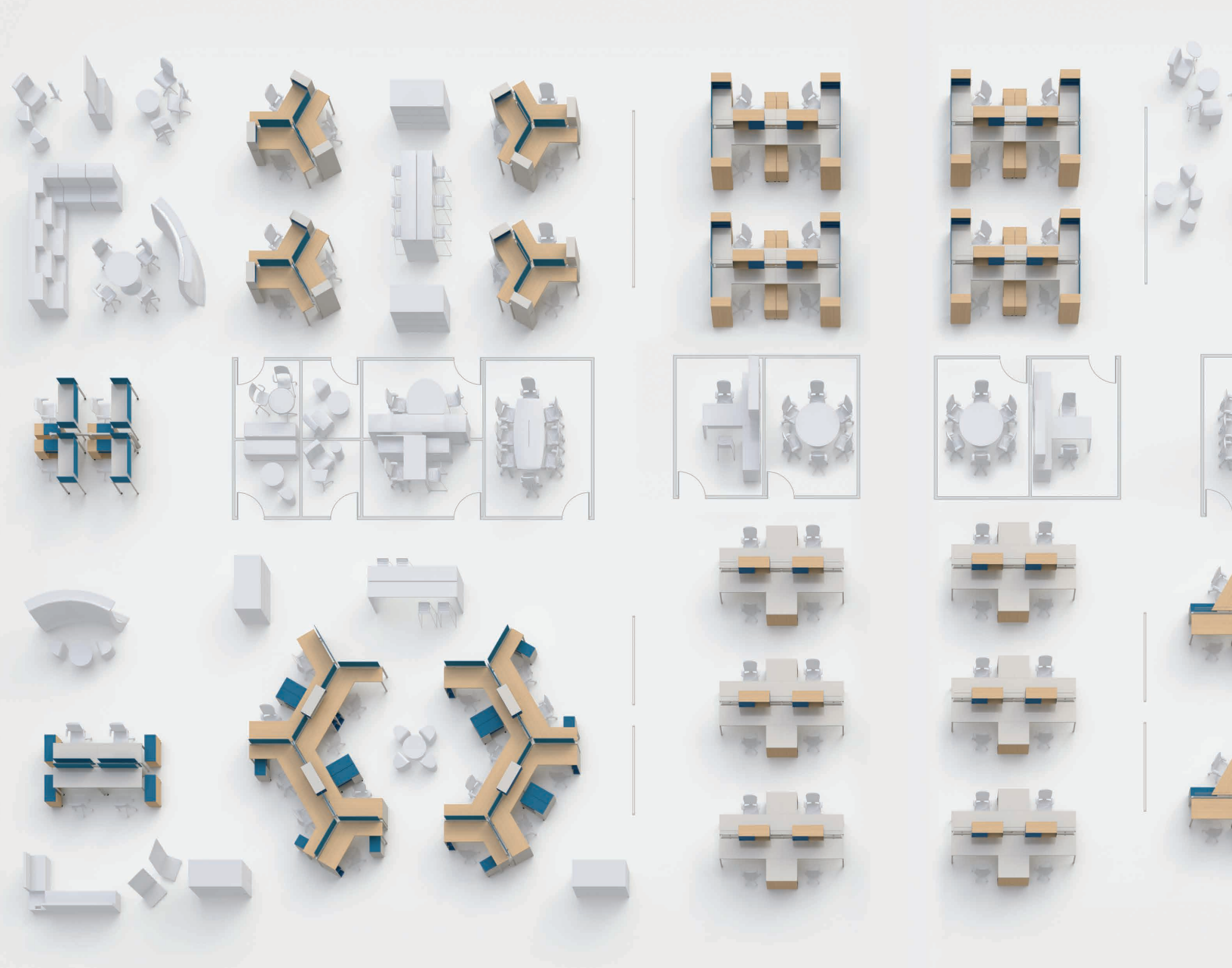
Further can be retrofitted from fixed-height to adjustable-height worksurfaces on demand while reusing 70% of the workstation's original parts.





Linear

Mix and match height-adjustable and fixed-height worksurfaces in the same run, either side-by-side or back-to-back, to fit worker preference.

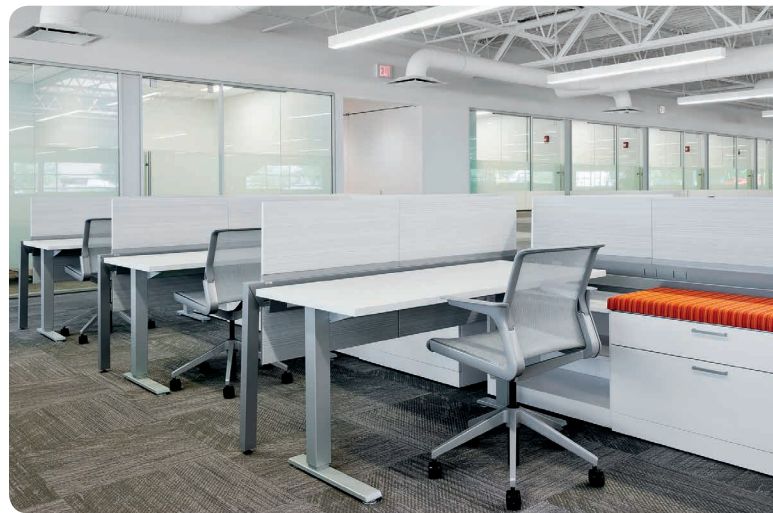


Take your workplace Further.

Further is a collection of thoughtfully designed elements that help you plan an inspired, productive workplace where people thrive. You can easily accommodate a variety of workstyles, from highly mobile and interactive to more desk-bound, focused work. Using the same components, you are free to create customized solutions across the entire floorplan that can easily evolve over time to keep up with changing business needs.



The clean, architecturally friendly aesthetic of Further works effortlessly with other Allsteel products, including movable walls, collaborative furniture, and seating.



Altitude height-adjustable tables provide worker choice for standing and sitting.



Multiple Further storage options give workers added organization in their workspace.

Powerful possibilities.

The signature power hub is the key to Further's infinite flexibility. It connects people to power and data. It can be either beam-connected or freestanding. And it empowers workflow by powering individual, collaborative, and team-based spaces. It easily reconfigures, accommodating whatever the moment demands, wherever it's needed.



The collaborative freestanding hub offers planning freedom. Available either hardwired or corded to support an interactive environment today or a workstation in the future.



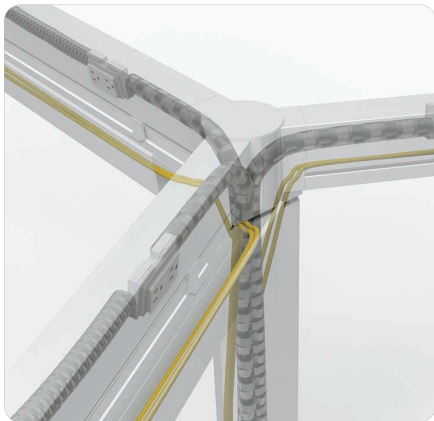
The freestanding hub-and-beam spine offers seamless, concealed power in freestanding areas. When the hub and beam are paired with mobile furniture, users can rearrange quickly and easily without interrupting power.



An integrated hub-and-beam spine provides power along beam-connected workstations. The hub supports both the beam and the worksurfaces.



Power reaches the hub through the floor or through the ceiling with an integrated power pole.



Power routes through the hub and is distributed through the beams, providing concealed power to individual workstations. Data is managed in either high-capacity baskets or low- or high-capacity troughs for quick installation and easy access.

Make it personal.

Further makes it easy to create the individual environment you need to work productively and comfortably, with a variety of uniquely designed components offered in an interesting mix of materials. Choose beam-mounted or table-mounted screens, available in 13" or 20½" heights for added privacy.

For ultimate flexibility, select user-movable screens that double as modesty panels. Then integrate storage with options that accommodate files, folders, and personal items. Finally, accessorize your space with a phone and tablet stand, cord organizer, and other worksurface-mounted accessories.

It's all about individual choices for how you work and what works for you. The result is a beautiful, simple design aesthetic that will inspire everyone.



Upmount horizontal storage with sliding door



User-movable fabric screen



Glass screen



Upmount screen

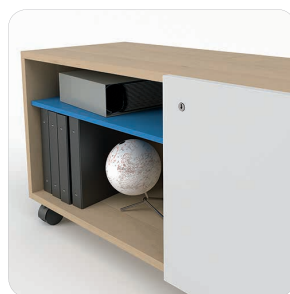




Side-access tower



Open support pedestal



Mobile credenza

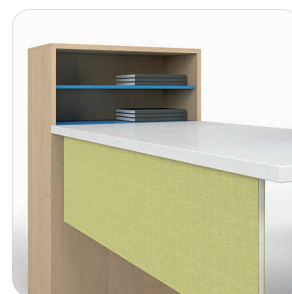
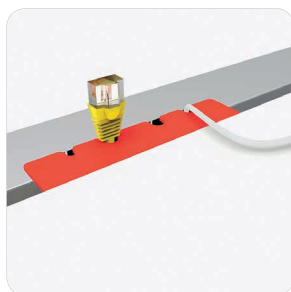


Table-mounted modesty screen



Pull-out pedestal



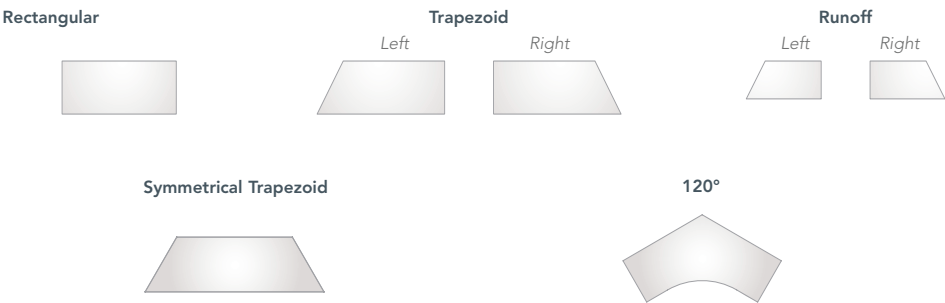
Cord manager



Hinged trough

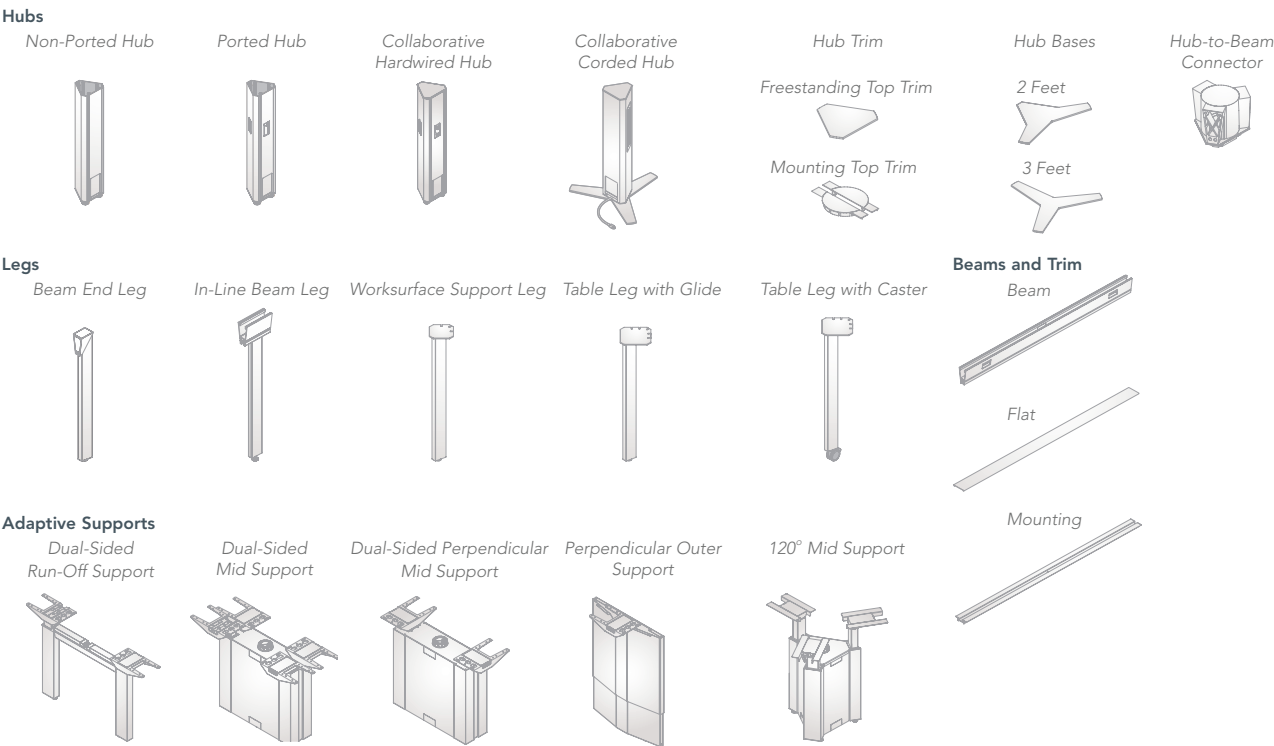
Further Statement of Line

WORKSURFACES

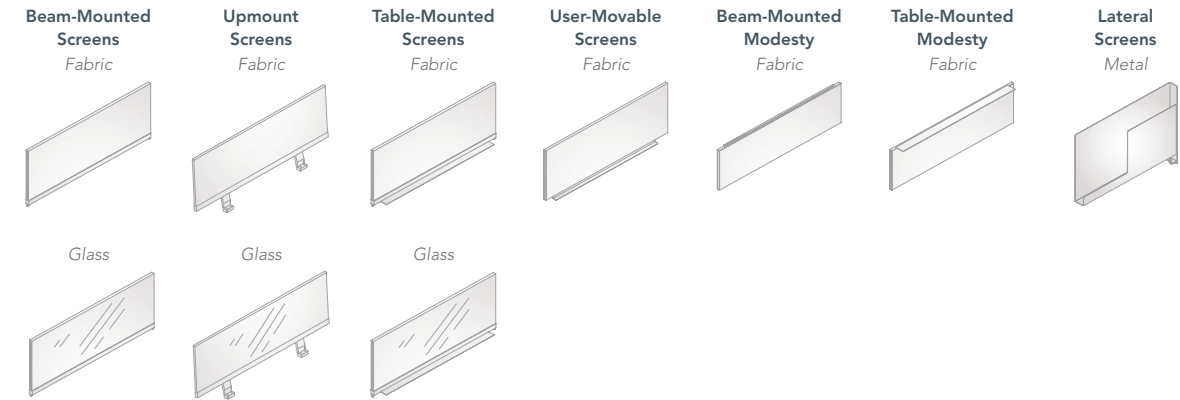


Primary work surface depths: 21" and 27" Runoff work surface depths: 15" and 18"

STRUCTURE & SUPPORTS



SCREENS & MODESTY PANELS



ACCESSORIES

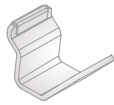
Accessories Rail



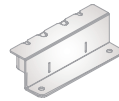
Beam-Mounted Shelf



Beam-Mounted Hook



Cord Organizer



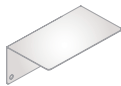
Pencil Holder



Phone/Tablet Stand



Shelf



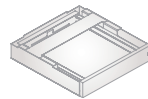
Vertical Paper Tray



Wire Manager Clips



Laptop Drawer



Power/Data Module



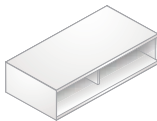
Technology Module



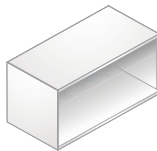
STORAGE

Horizontal

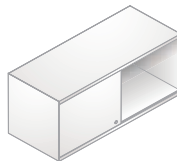
Nitch



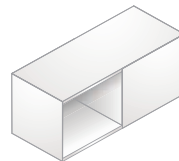
Open



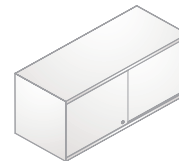
Sliding Door



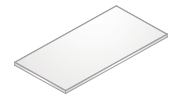
Dual-Sided Open



Dual-Sided with Sliding Door



Beam-Mounted Shelf



Nitch height: 7½" Storage height: 15" Nitch, storage, and shelf depth: 15"

Floor-Based

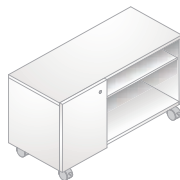
Open Support Pedestal



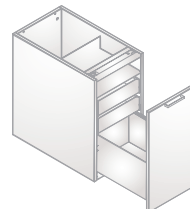
Open Support Pedestal with Bin



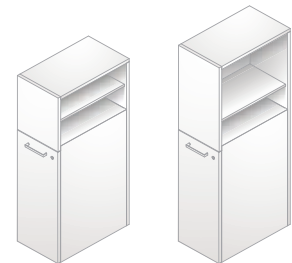
Mobile Credenza



Pull-Out Drawer Pedestal



Side-Access Towers with Drawer



Open support pedestal depths: 21" and 27" width: 10" height: 28"

Mobile credenza depth: 15" width: 36" height: 20"

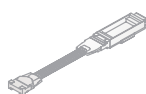
Side-access tower depths: 21" and 27" width: 12" heights: 42½" and 50"

ELECTRICAL & DATA

In-Feed Cable



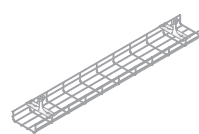
Harness Kits



Duplex Receptacle



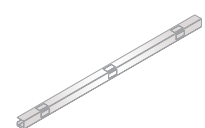
Wire Basket



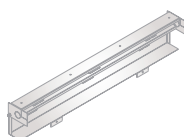
Beam-Mounted Wire Manager



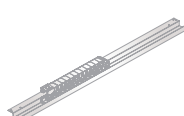
Beam-Mounted Concealed Wire Manager



Under-Worksurface Hinged Trough



Cord Management Chain



Power Pole





Flexibility and choice like never before with Further.

Allsteel®

Allsteel Inc.
Muscatine, Iowa 52761-5257
allsteeloffice.com

Form # A8244.B1 (12/16) Printed in USA



This FSC-certified paper contains 10% post-consumer recycled content.

©2016 Allsteel Inc.
Allsteel and Altitude are registered trademarks and Dimension and Further are trademarks. Indoor Advantage is a trademark of SCS Global Services. level is a registered trademark of BIFMA International.

Allsteel supports green initiatives in the contract furniture industry as a member of the U.S. Green Building Council. Further is an SCS Indoor Advantage™ Gold and level® 2 certified product.

