

Globe products are manufactured to meet or exceed industry standards. To the best of our knowledge, the information contained herein is accurate at the time of publishing; however, Globe Manufacturing Company, LLC, and its affiliates assume no liability for its accuracy or completeness. Users of Globe products must satisfy themselves by independent investigation that the products and materials they have selected are safe for their intended use. We have described certain hazards, but we cannot guarantee that these are the only hazards that users may encounter. No products, including garments and footwear, protect completely, even when new; their protective performance will decline with wear, tear, abrasion, and other damage associated with use.

DUPONT, NOMEX, KEVLAR, and designs are trademarks or registered trademarks of E.I. du Pont de Nemours and Company or its affiliates.

CROSSTECH, GORE, GORE-SEAM, and designs are trademarks of W.L. Gore & Associates, Inc.

3M and Scotchlite are trademarks of 3M, used under license in Canada.

YOCCO is a trademark of Yocco Enterprises, LLP.

CAIRNS is a registered trademark of the Trustees of the Cairns Trademark Trust.

VIBRAM and designs are registered trademarks of Vibram S.p.A.

## Globe Manufacturing Company

37 Loudon Road

Pittsfield, NH 03263

Tel: 800-232-8323

603-435-8323

info@globefiresuits.com

globeturnoutgear.com

PORON, XRD, and designs are trademarks or registered trademarks of Rogers Corporation.

PBI is a registered trademark of PBI Performance Products, Inc.

ARA-SHIELD and KOMBAT are trademarks or registered trademarks of TenCate Protective Fabrics USA.

NFPA and National Fire Protection Association are registered trademarks of the National Fire Protection Association.

UL and the UL logo are trademarks of UL LLC.

GLOBE, GLOBE FIREFIGHTER SUITS, GLOBE FOOTGEAR, ATHLETIX, AXTION, CLASSIX, COLLARBREAK, DRAGONHIDE, EMSRESCUE, G-XCEL, G-XTREME, HEELPORT, IH, METRO, ONYX, PREDATOR, REAXTION, SHADOW, SILIZONE, SUPRALITE, SUPREME, TECHRESCUE, TRIMTRAX, XPS, ZIPPERGRIPPER, and designs are registered trademarks or trademarks of Globe Holding Company, LLC.

Globe Turnout Gear is manufactured by Globe Manufacturing Company, LLC, or Globe Manufacturing Company - OK, LLC, and sold by Globe Manufacturing Company, LLC. Globe Rescue Gear is manufactured and sold by Globe LifeLine, LLC. Globe Boots are manufactured and sold by Globe Footwear, LLC.

© 2017 Globe Holding Company, LLC. Details and specifications are subject to change without notice. Printed in USA. 11/17



## GEAR CATALOG

### YOUR GLOBE DEALER







CONTENTS

|                                     |    |                            |    |
|-------------------------------------|----|----------------------------|----|
| HISTORY OF INNOVATION .....         | 2  | RESCUE GEAR                |    |
| TURNOUT GEAR                        |    | TECHRESCUE™ .....          | 28 |
| ATHLETIX™ .....                     | 4  | EMSRESCUE™ .....           | 32 |
| G-XTREME® 3.0 .....                 | 8  | BOOTS                      |    |
| IH™ READY .....                     | 12 | SUPRALITE® .....           | 38 |
| A NEW DIMENSION IN FIT: SHAPE ..... | 14 | SUPREME™ .....             | 40 |
| REACTION® .....                     | 16 | SHADOW™ .....              | 42 |
| G-XCEL® .....                       | 20 | ONYX® .....                | 44 |
| CLASSIX® .....                      | 24 | PROXIMITY .....            | 46 |
| CLASSIX® METRO™ .....               | 25 | TECHNICAL 10" .....        | 48 |
|                                     |    | EMS/WILDLAND 10" .....     | 48 |
|                                     |    | STATION/WILDLAND 10" ..... | 48 |

I RISE TO EVERY CHALLENGE.

ATHLETE



Nomex. Kevlar.

An unstoppable combination of strength and inherent flame resistance.





# 130 YEARS OF INNOVATION

Globe invented turnout gear 130 years ago. Today we still deliver the most advanced, best-fitting, and longest-lasting protection by listening to our customers, creating breakthrough designs, and applying the engineering skills of the nation's most trusted manufacturer.

Our owners, our employees, and our dealers all share a passion for building “Athletic Gear for Firefighters” in their choice of styles, materials, and options. And no matter what challenges tomorrow’s firefighters face, they can be sure that Globe will continue to be there to protect them.

1887

Globe Manufacturing Company is founded in Lynn, MA. Courtland F.H. Freese buys the company and moves it to Pittsfield, NH, which remains its headquarters to this day.

1918

Globe receives a patent for a waterproof coat using an outer shell, a waterproof barrier, and a thermal lining—the same system still used today by all manufacturers of turnout gear.

1953

Globe is the first to use 3M™ Scotchlite™ reflective trim to add visibility to its turnout gear.

1966

Globe introduces DuPont NOMEX® inherently flame-resistant fabric.

1975

Globe is a charter member of the National Fire Protection Association, creating the first NFPA 1971 Standard for Protective Clothing for Structural Fire Fighting. Globe becomes the first to comply with this new standard for every turnout sold.

1985

Globe introduces two state-of-the-art performance fabrics: PBI® for outer shells and waterproof, breathable Gore-Tex® fabric for moisture barriers.

1991

Globe brings ergonomic design to turnout gear by launching the revolutionary GX-7™, which rapidly becomes the most popular turnout gear in the fire service.

1993

The fourth generation of the founding Freese family takes over the ownership and management of Globe. Gef (left), Rob (middle), and Don (right).

1994

Globe is the first manufacturer of turnouts to achieve ISO 9001 Certification.

1995

Globe acquires Cairns Protective Clothing.



2000

Recognizing that the rescue component of firefighters' jobs continues to grow, Globe introduces Globe LifeLine—the right gear for the job. Globe implements Lean Manufacturing, dramatically improving efficiency and reducing delivery times.

2003

Globe launches G-XTREME®—the world's most advanced turnout gear—designed to move the way the human body moves without restriction.

2005

REACTION® joins the Globe Cairns family, with its patented collar that attaches the liner to the outside of the jacket and adds length and fullness where the body bends.

2006

Globe introduces “Athletic Footwear for Firefighters,” with its remarkably flexible, cushioned, and contoured construction, to choruses of “Wow.”

2007

Globe launches IH™ Pants—integrating a Class 2 internal seat harness with floating, load-equalizing leg loops into turnout gear.

2008

Globe introduces G-XCEL® and RSX™ turnout gear styles—serious performance and great value.

2009

Another new Globe turnout style—CLASSIX®. Value-priced turnout gear with a nod to the traditional.

2012

G-XTREME® introduces a whole new dimension in fit—SHAPE. Now your gear can really fit your body—without extra bulk and without restriction—so that you can perform your job better.

2015

Globe introduces the evolution of Athletic Gear for Firefighters. The new G-XTREME® 3.0 is completely retailored from collar to cuff to provide even less restriction.

2016

Globe previews the future of turnout gear—ATHLETIX™. New material technology enables the all-new athletic design with stretch fabrics that allow closer, body-contoured fit to provide unprecedented range of motion with less bulk, more flexibility, and lighter weight.

2017

MSA acquires Globe Manufacturing Company to continue the Globe tradition of innovation.





# ATHLETIX™ JACKET



2016 IFAI AWARD OF  
**EXCELLENCE**  
INTERNATIONAL ACHIEVEMENT AWARDS



**LESS BULKY, SOFTER & MORE ADJUSTABLE COLLAR** interfaces better with hood and helmet and reduces head restriction.



**STRETCH PANELS** in the thermal liner work with the stretch outer shell to provide maximum range of motion and minimum restriction.



**DRD OPENING IN THE COLLAR** takes bulk out of the upper back and allows better access above the SCBA.



**ELASTICIZED SIDE PANELS** provide flexible, more athletic fit at the waist.



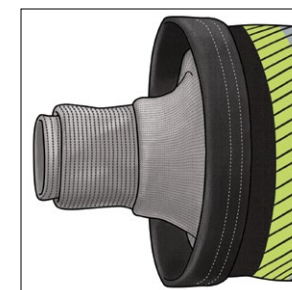
**ARTICULATED ELBOWS** for body-contoured fit with minimum restriction.



**OVERLAPPING FRONT CLOSURE WITH OPTIONAL ZIPPERGRIPPER™** to reduce bulk and permit quicker and easier donning and doffing.



**CARGO POCKETS WITH GRIP TABS** for quicker and easier access to all your stuff in the minimum amount of time.



**TELESCOPING SLEEVE BAND WITH DOUBLE WRISTERS** keeps water out and adds thermal protection.

## ATHLETIX™ JACKET

New material technology enables all-new athletic design with stretch fabrics that allow closer, body-contoured fit to provide unprecedented range of motion with less bulk, more flexibility, and lighter weight.

## MATERIALS

**NEW KOMBAT™ STRETCH PBI®/KEVLAR®** fabric allows closer, less bulky fit with unprecedented range of motion and more flexibility, while providing premium thermal break open protection.

**NEW NOMEX® NANO** thermal barrier material is thinner, lighter, more flexible, more breathable, and quicker drying.

**NEW 3M™ SCOTCHLITE™ COMFORT TRIM** reflective material is segmented and heat sealed to be lighter, more flexible, and breathable without sacrificing visibility.

**GORE® CROSSTECH® BLACK** moisture barrier provides the highest breathability in the widest range of environmental conditions to reduce heat stress.

## JACKET FEATURES

**MORE STREAMLINED DESIGN** with vertical seaming reduces oversize in front chest, bulk under SCBA, and stiffness in front closure.

**YOCCO™ DRAG RESCUE DEVICE** is easy to deploy when you need it, out of the way when you don't.

**EXTENDED BACK** option allows you to choose to extend the back by 3" or 6" for additional overlap and lettering below the SCBA.

**LINER ACCESS OPENING** allows for easy access between the layers.

**NEW, MORE FLEXIBLE SEAMS** are safety-stitched and double-needle top-stitched for strength but are less bulky and lay flatter.

Because ATHLETIX™ is loaded with standard features and the nature of the stretch outer shell fabric, **OPTIONS** are limited. Please inquire.

**MEN'S & WOMEN'S SIZES:** Chest, Length, and Sleeve.



Certified to NFPA 1971 (Structural Fire Fighting).

MADE IN THE USA



# ATHLETIX™ PANTS



2016 IFAI AWARD OF  
**EXCELLENCE**  
INTERNATIONAL ACHIEVEMENT AWARDS



**LOWER RISE, LESS BULKY DESIGN** fits closer to your body, and deeper fly opening permits quicker and easier donning and doffing.



**BANDED INSEAM DESIGN** allows stretch in all directions and reduces binding in the crotch.



**STRETCH PANELS** in the thermal liner work with the stretch outer shell to provide maximum range of motion and minimum restriction.



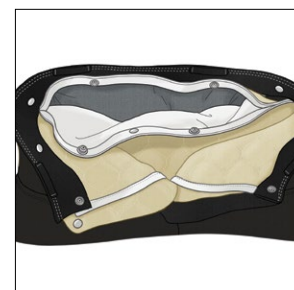
**ELASTICIZED SIDES** and one-hand adjustable belt closure provide flexible, more athletic fit at the waist.



**ARTICULATED KNEES** with cathedral knee patches and SILIZONE® knee pads are built for unrestricted and protected crawling.



**ANGLED SIDE POCKETS WITH GRIP TABS** for easier access to all your stuff in the minimum amount of time.



**LINER ACCESS OPENING** allows for easy access between the layers.



**PADDED H-BACK RIPCORD SUSPENDERS** attach to horizontal loops, so there is no metal hardware to dig in or pull out.

## MATERIALS

**NEW KOMBAT™ STRETCH PBI®/KEVLAR®** fabric allows closer, less bulky fit with unprecedented range of motion and more flexibility, while providing premium thermal break open protection.

**NEW NOMEX® NANO** thermal barrier material is thinner, lighter, more flexible, more breathable, and quicker drying.

**NEW 3M™ SCOTCHLITE™ COMFORT TRIM** reflective material is segmented and heat sealed to be lighter, more flexible, and breathable without sacrificing visibility.

**Gore® CROSSTECH® BLACK** moisture barrier provides the highest breathability in the widest range of environmental conditions to reduce heat stress.

## PANTS FEATURES

**REVERSE BOOT CUT** is shorter in the back to avoid premature cuff wear.

**NEW, MORE FLEXIBLE SEAMS** are safety-stitched and double-needle top-stitched for strength but are less bulky and lay flatter.

Because ATHLETIX™ is loaded with standard features and the nature of the stretch outer shell fabric, **OPTIONS** are limited. Please inquire.

**MEN'S & WOMEN'S SIZES:** Waist and Inseam.



Certified to NFPA 1971 (Structural Fire Fighting).

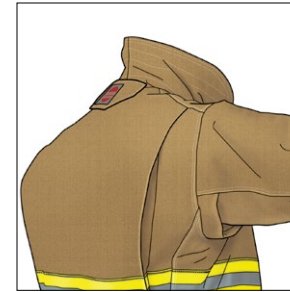
MADE IN THE USA



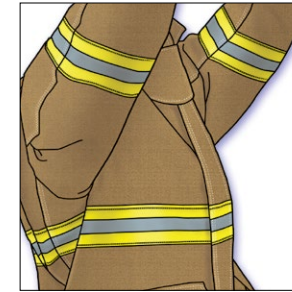
# G-XTREME® 3.0 JACKET



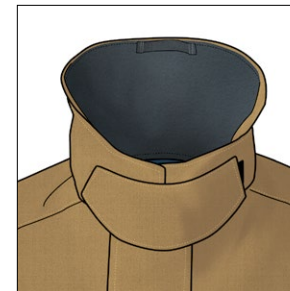
Shown with optional American flag, cuff reinforcements made from outer shell fabric, and grey wristers.



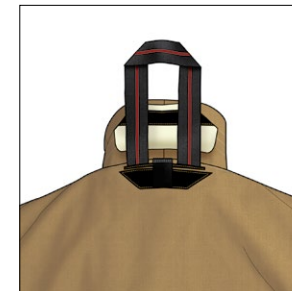
**AXTION® BACK** adds length across your shoulders when you work in front of you.



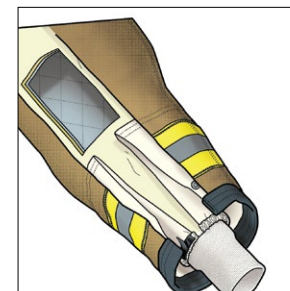
**AXTION® SLEEVE** provides extra length when you reach.



**FREE-HANGING THROAT TAB** stays out of your way when not deployed.



**YOCCO™ DRAG RESCUE DEVICE** is easy to deploy when you need it, out of the way when you don't.



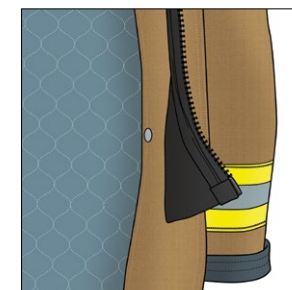
**TELESCOPING SLEEVE WELLS** keep water out and add thermal protection.



**TRIMTRAX® THREAD PROTECTION** with patented cording lasts far longer on sewn on trim than conventional stitching.



**LINER ACCESS OPENING** allows for easy access between the layers.



Optional **ZIPPERGRIPPER™** (patent pending) makes starting the zipper a breeze.

## G-XTREME® 3.0 JACKET

With all the features of our original G-XTREME®, including Globe's exclusive AXTION® Back and Sleeve, the updated G-XTREME® 3.0 jacket is retailored in the chest, shoulder, and sleeve for even more mobility. The lower collar with a deeper neck opening is more flexible, less restrictive, and better fitting, even with your hood on. And like the original, G-XTREME® 3.0 comes in SHAPES to fit your body better.

## MORE STANDARD FEATURES

**THERMALLY ENHANCED UPPER BODY** is oversized for more coverage.

**CONTOURED SLEEVES** are ergonomically curved to work with you—not against you.

**ONE-PIECE CONTOURED COLLAR** eliminates bulk and maintains ergonomic shape when flipped up or folded down.

**EXPANSION CARGO/HANDWARMER POCKETS** are reinforced with KEVLAR® fabric inside and NOMEX® fleece behind.

**GENEROUS LINER POCKET** is lined with moisture barrier.

**EXTENDED BACK** option allows you to choose to extend the back by 3" or 6" for additional overlap and lettering below the SCBA.

**DOUBLE-STITCHED SEAMS** with 8–10 stitches per inch for longer service life.

Your choice of **MATERIALS**: Outer Shells, Moisture Barriers, Thermal Liners, Reinforcements, Reflective Trim, and Lettering.

Your choice of **OPTIONS**: Closures, Pockets, Holders/Clips/Straps, Patches, and Sleeve Wells/Wristers.

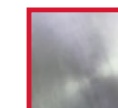
**MEN'S SIZES**: Chest, Length, Shape, and Sleeve.

**WOMEN'S SIZES**: Chest, Length, and Sleeve.



Certified to NFPA 1971 (Structural Fire Fighting).

MADE IN THE USA



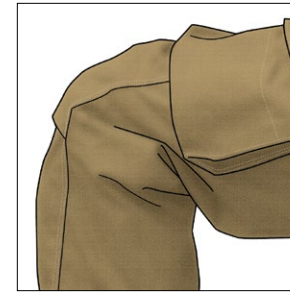
ALSO AVAILABLE  
IN PROXIMITY



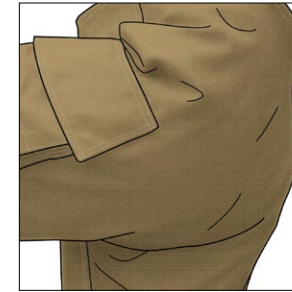
# G-XTREME® 3.0 PANTS



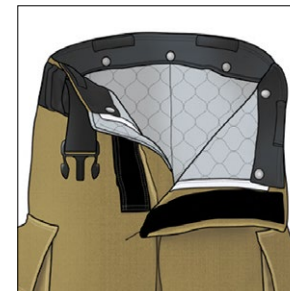
Shown with optional DRAGONHIDE® reinforcements on knees and cuffs and SILIZONE® knee padding on liner.



**AXTION® KNEE** adds length over the knee so you can step up, sit down, kneel, or crawl freely.



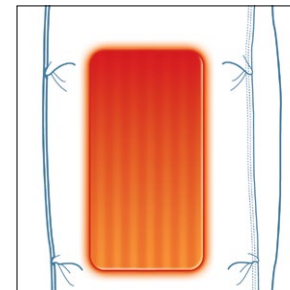
**AXTION® SEAT** adds length in the seat to allow you to bend at the waist and knees freely.



**ADJUSTABLE BELT CLOSURE** transfers weight to your hips and makes the pants fit like a pair of jeans.



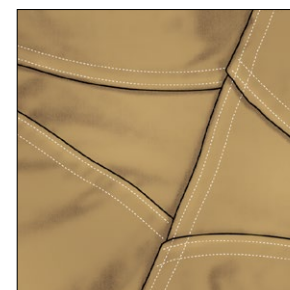
**PADDED H-BACK RIPCORDER SUSPENDERS** attach to horizontal loops so there is no metal hardware to dig in or pull out.



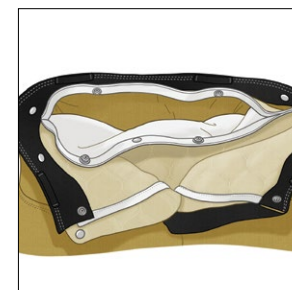
**THERMALLY ENHANCED KNEES** add a layer of thermal and moisture barrier to protect this high-compression area.



Optional **SILIZONE® KNEE PADDING** on liner.



**DIAMOND CROTCH GUSSET** distributes stress in both shell and liner for durability.



**LINER ACCESS OPENING** allows for easy access between the layers.

## G-XTREME® 3.0 PANTS

In this latest release of our best-selling style, we've retailored the waist, seat, and thigh for less bulk, while making these pants much easier to get on and off. With all the features of our original G-XTREME® including Globe's exclusive AXTION® Seat and Knee, these pants fit like a pair of jeans and let you make all the right moves. And like the original, G-XTREME® 3.0 comes in SHAPES to fit your body better.

## MORE STANDARD FEATURES

**EXPANSION CARGO POCKETS** are reinforced with KEVLAR® fabric inside.

**INDEPENDENT STRETCH WAISTBAND** for unrestricted fit and no-gap protection with liner.

**REVERSE BOOT CUT** is shorter in the back to avoid premature cuff wear.

**VERTICAL FLY CLOSURE** with hook and loop makes for fast and secure donning.

Optional **DRAGONHIDE® REINFORCEMENTS** on knees and cuffs.

**TRIMTRAX® THREAD PROTECTION** with patented cording lasts far longer on sewn on trim than conventional stitching.

**DOUBLE-STITCHED SEAMS** with 8–10 stitches per inch for longer service life.

Your choice of **MATERIALS**: Outer Shells, Moisture Barriers, Thermal Liners, Reinforcements, Reflective Trim, and Lettering.

Your choice of **OPTIONS**: Closures, Pockets, Holders/Clips/Straps, Suspenders, and Harnesses/Loops/Pockets.

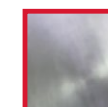
**MEN'S SIZES**: Waist, Shape, and Inseam.

**WOMEN'S SIZES**: Waist and Inseam.



Certified to NFPA 1971 (Structural Fire Fighting).

MADE IN THE USA



ALSO AVAILABLE IN PROXIMITY



# IH™ READY PANTS



Shown with optional DRAGONHIDE® reinforcements on knees and cuffs and SILIZONE® knee padding on liner.



Optional **SERIES 1  
INTERNAL HARNESS**  
with floating leg loops and  
low-profile waist buckle.



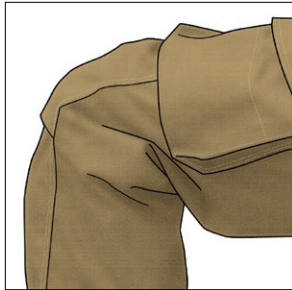
Optional **SERIES 2  
INTERNAL HARNESS**  
with floating leg loops, hook  
and dee closure, and choice  
of auto-lock carabiner.



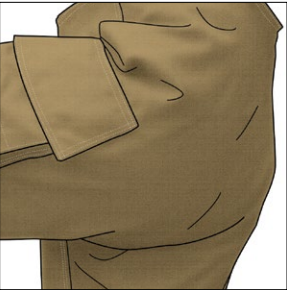
Optional **SERIES 3  
INTERNAL HARNESS**  
with floating leg loops  
and a hook and dee  
style closure.



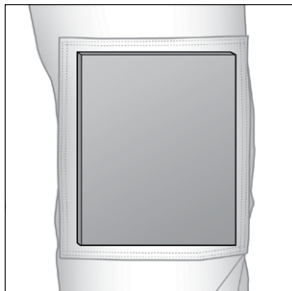
Optional **ESCAPE BELT**  
replaces standard belt  
closure.



**AXTION® KNEE** adds  
length over the knee so  
you can step up, sit down,  
kneel, or crawl freely.



**AXTION® SEAT** adds  
length in the seat to allow  
you to bend at the waist  
and knees freely.



Optional **SILIZONE®  
FOAM KNEES** make  
crawling almost heavenly  
and don't absorb water.



**PADDED H-BACK  
RIPCORD SUSPENDERS**  
attach to horizontal loops so  
there is no metal hardware  
to dig in or pull out.

## IH™ READY PANTS

Your choice of internal Class 2 Seat Harnesses or a Personal Escape Belt certified to NFPA 1983 (Life Safety Rope and Equipment). Harnesses feature our patented floating leg loop system. Leg loops stay down out of your business except when you load the harness, pulling them up into the correct seat position to equalize the load. Leg loops are hardware free, so there's nothing to dig into your legs. Made from KEVLAR®, these harnesses meet NFPA 1971 (Structural Fire Fighting) requirements for flame and heat resistance when installed in the pants. Not ready to upgrade to an internal harness? Add it later without alteration.

## MORE STANDARD FEATURES

- ADJUSTABLE BELT CLOSURE** makes the pants fit like jeans or can be replaced by your choice of harnesses or belts, initially or down the road.
  - VERTICAL FLY CLOSURE** with hook and loop makes for fast and secure donning.
  - INDEPENDENT STRETCH WAISTBAND** for unrestricted fit and no-gap protection with liner.
  - LINER ACCESS OPENING** for easy access between the layers.
  - THERMALLY ENHANCED KNEES** add a layer of thermal and moisture barrier to protect this high-compression area.
  - EXPANSION CARGO AND ROPE POCKETS** with hook and loop hardware straps and reinforced with KEVLAR® fabric inside.
  - REVERSE BOOT CUT** is shorter in the back to avoid premature cuff wear.
  - TRIMTRAX® THREAD PROTECTION** with patented cording lasts far longer on sewn on trim than conventional stitching.
  - DOUBLE-STITCHED SEAMS** with 8–10 stitches per inch for longer service life.
- Your choice of **MATERIALS**: Outer Shells, Moisture Barriers, Thermal Liners, Reinforcements, and Reflective Trim.

- Your choice of **OPTIONS**: Closures, Pockets, Holders/Clips/Straps, and Harnesses/Loops/Pockets.
- MEN'S SIZES**: Waist, Shape, and Inseam.
- WOMEN'S SIZES**: Waist and Inseam.

 Certified to NFPA 1971 (Structural Fire Fighting).  
**MADE IN THE USA**



# A New Dimension in Fit: SHAPE

## RELAXED SHAPE

Many firefighters choose a relaxed shape for maximum mobility. That's one reason why our G-XTREME® 3.0 Pants are so popular—added length in the knee and the seat and added fullness in the seat and thigh give it a less-restrictive, relaxed shape.

## REGULAR SHAPE

Those who are trimmer may appreciate this new, closer-fitting, regular shape with added length in the knee and the seat but with less fullness in the seat and thigh.



# Available in G-XTREME® 3.0 and IH™ READY


## TAPERED SHAPE

An athletic, tapered shape fits firefighters with a larger chest and shoulders without adding bulk around the middle. Our most popular shape.

## STRAIGHT SHAPE

Those with a broader build or who plan to wear a seat harness or other equipment around their waist under the jacket will appreciate the fuller, straight shape.

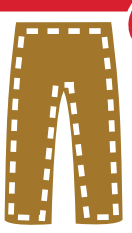


**1**  
**GENDER**

MEN'S or  
WOMEN'S

**2**  
**WAIST**

EVEN SIZES

**3**  
**SHAPE**

MEN'S RELAXED  
OR  
REGULAR

**4**  
**INSEAM**

EVEN SIZES

**5**  
**CHEST**

EVEN SIZES

**6**  
**LENGTH**

MEN'S: 29",  
32", or 35"  
WOMEN'S:  
26", 29"

**7**  
**SHAPE**

MEN'S STRAIGHT  
OR  
TAPERED

**8**  
**SLEEVE**

1"  
INCREMENTS



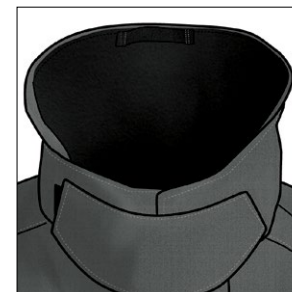
# REACTION® JACKET



Shown with optional American flag, radio pocket, and cuff reinforcements made from outer shell fabric.



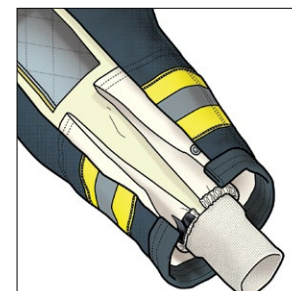
**COLLARBREAK™ ATTACHMENT SYSTEM** with the collar sewn to the liner instead of the outer shell for a completely smooth fit across the neck.



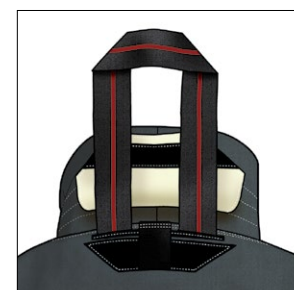
**FREE-HANGING THROAT TAB** stays out of your way when not deployed.



**AXTION® SLEEVE** provides extra length when you reach.



**TELESCOPING SLEEVE WELLS** keep water out and add thermal protection.



**YOCO™ DRAG RESCUE DEVICE** is easy to deploy when you need it, out of the way when you don't.



**THERMALLY ENHANCED UPPER BODY** is oversized for more coverage.



**EXTENDED BACK** option allows you to choose to extend the back by 3" or 6" for additional overlap and lettering below the SCBA.



## REACTION® JACKET

REACTION® combines the latest advances in ergonomic design—like AXTION® Sleeves—with customer-favorite features—like COLLARBREAK™—to put it all together for you.

## MORE STANDARD FEATURES

Semi-bellows **CARGO/HANDWARMER POCKETS** lined with KEVLAR® fabric inside and NOMEX® fleece behind hold a lot but don't bulge out in the front.

**CONTOURED SLEEVES** are ergonomically curved to work with you—not against you.

**AXTION® LINER** allows unrestricted movement and easy access between the layers.

**GENEROUS LINER POCKET** is lined with moisture barrier.


**TRIMTRAX® THREAD PROTECTION** with patented cording lasts far longer on sewn on trim than conventional stitching.

**DOUBLE-STITCHED SEAMS** with 8–10 stitches per inch for longer service life.

Your choice of **MATERIALS**: Outer Shells, Moisture Barriers, Thermal Liners, Reinforcements, Reflective Trim, and Lettering.

Your choice of **OPTIONS**: Closures, Pockets, Holders/ Clips/Straps, Patches, and Sleeve Wells/Wristers.

**MEN'S & WOMEN'S SIZES**: Chest, Length, and Sleeve.

**CLASSIFIED**  Certified to NFPA 1971 (Structural Fire Fighting).

**MADE IN THE USA**



# REACTION® PANTS



Shown with optional DRAGONHIDE® reinforcements on knees and cuffs and SILIZONE® knee padding on liner.



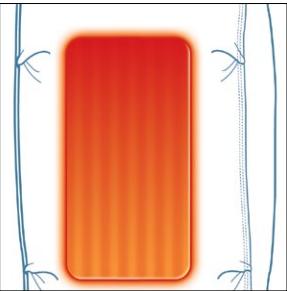
**AXTION® SEAT** adds length in the seat to allow you to bend at the waist and knees freely.



**AXTION® KNEE** adds length over the knee so you can step up, sit down, kneel, or crawl freely.



**ADJUSTABLE BELT CLOSURE** transfers weight to your hips and makes the pants fit like a pair of jeans.



**THERMALLY ENHANCED KNEES** add a layer of thermal and moisture barrier to protect this high-compression area.



**LINER ACCESS OPENING** for easy access between the layers.



Optional **SILIZONE® FOAM KNEES** make crawling almost heavenly and don't absorb water.



**XPS™ EXTENSION PANEL SYSTEM** allows you to choose to extend the height by 3" to maintain overlap with shorter jackets.



**PADDED H-BACK RIPCORD SUSPENDERS** attach to horizontal loops so there is no metal hardware to dig in or pull out.

## REACTION® PANTS

When called into action, you need to fight the fire—not your gear. That's when the added length and fullness in the AXTION® Seat and Knee combine to allow you to move unlike any other turnout gear. And with its adjustable belt, REACTION® fits you like you always wanted—like a pair of jeans.

## MORE STANDARD FEATURES

**EXPANSION CARGO POCKETS** with angled flaps for easy access, reinforced with KEVLAR® fabric inside.

**INDEPENDENT STRETCH WAISTBAND** for unrestricted fit and no-gap protection with liner.

**DIAMOND CROTCH GUSSET** distributes stress in both shell and liner for durability.

**REVERSE BOOT CUT** is shorter in the back to avoid premature cuff wear.

**VERTICAL FLY CLOSURE** with hook and loop makes for fast and secure donning.


**TRIMTRAX® THREAD PROTECTION** with patented cording lasts far longer on sewn on trim than conventional stitching.

**DOUBLE-STITCHED SEAMS** with 8–10 stitches per inch for longer service life.

Your choice of **MATERIALS**: Outer Shells, Moisture Barriers, Thermal Liners, Reinforcements, and Reflective Trim.

Your choice of **OPTIONS**: Closures, Pockets, Holders/Clips/Straps, Suspenders, and Harnesses/Loops/Pockets.

**MEN'S & WOMEN'S SIZES**: Waist and Inseam.

 Certified to NFPA 1971 (Structural Fire Fighting).

MADE IN THE USA



# G-XCEL® JACKET



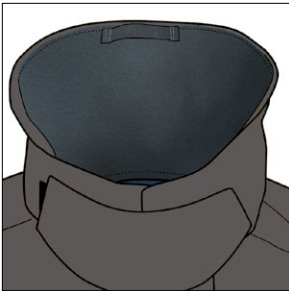
Shown with optional American flag, radio pocket, and cuff reinforcements made from outer shell fabric.



Standard **LONGER BACK** for more overlap coverage and space for lettering below the SCBA.



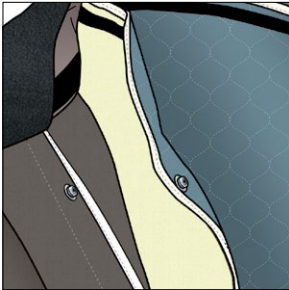
**AXTION® SLEEVE** provides extra length when you reach.



**FREE-HANGING THROAT TAB** stays out of your way when not deployed.



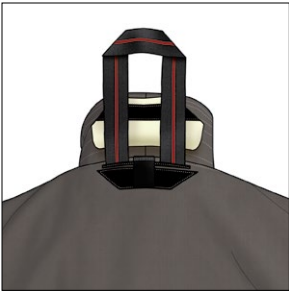
**TELESCOPING SLEEVE BAND** keeps debris and water out.



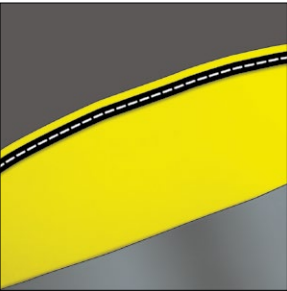
**LINER ACCESS OPENING** is oversized for easy access between the layers.



**CARGO/HANDWARMER POCKETS** lined with KEVLAR® fabric inside and NOMEX® fleece behind.



**YOCCO™ DRAG RESCUE DEVICE** is easy to deploy when you need it, out of the way when you don't.



**TRIMTRAX® THREAD PROTECTION** with patented cording lasts far longer on sewn on trim than conventional stitching.

## G-XCEL® JACKET

Being lightweight and flexible are hallmarks of this all-new chassis. With a longer back and shorter front, you get more overlap where you need it with less where you don't. So everything about this contemporary design feels just right.

## MORE STANDARD FEATURES

**CONTOURED SLEEVES** are ergonomically curved to work with you—not against you.

Shorter **CONTOURED COLLAR** for easy interface with helmets.


**GENEROUS LINER POCKET** is lined with moisture barrier.

**DOUBLE-STITCHED SEAMS** with 8–10 stitches per inch for longer service life.

Your choice of **MATERIALS**: Outer Shells, Moisture Barriers, Thermal Liners, Reinforcements, Reflective Trim, and Lettering.

Your choice of **OPTIONS**: Closures, Pockets, Holders/Clips/Straps, Patches, and Sleeve Wells/Wristers.

**MEN'S & WOMEN'S SIZES**: Chest, Length, and Sleeve.

 Certified to NFPA 1971 (Structural Fire Fighting).

MADE IN THE USA

 ALSO AVAILABLE IN PROXIMITY



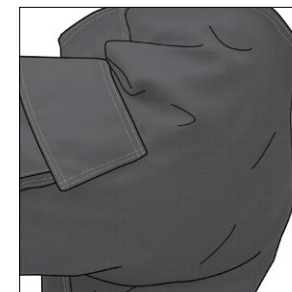
# G-XCEL® PANTS



Shown with optional belt, wide belt loops, DRAGONHIDE® reinforcements on knees and cuffs, and SILIZONE® knee padding on liner.



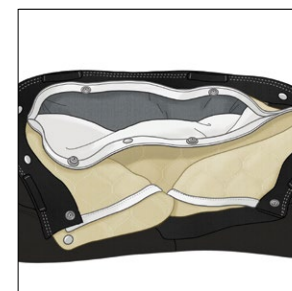
**AXTION® KNEE** adds length over the knee so you can step up, sit down, kneel, or crawl freely.



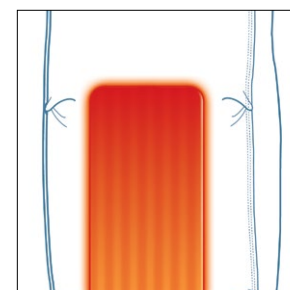
**AXTION® SEAT** adds length in the seat to allow you to bend at the waist and knees freely.



**VERTICAL FLY CLOSURE** with hook and dee and take-up straps or optional belt for fast and secure donning.



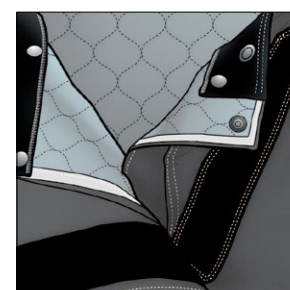
**LINER ACCESS OPENING** for easy access between the layers.



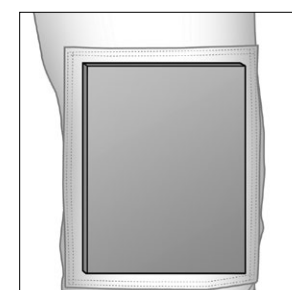
**THERMALLY ENHANCED KNEES** add a layer of thermal and moisture barrier to protect this high-compression area.



**PADDED H-BACK RIPCORD SUSPENDERS** attach to horizontal loops so there is no hardware to dig in or pull out.



**LEFT-HAND OPENING** available (as LH Pant) for left-opening external harnesses with optional harness loops.



Optional **SILIZONE® FOAM KNEES** make crawling almost heavenly and don't absorb water.

## G-XCEL® PANTS

This low-rise style provides a modern fit, and with the added length you need for mobility in the knee and seat to bend, the pants don't ride down. Together with the extended back on the jacket, you can maintain generous overlap even with these lower-rise pants.

## MORE STANDARD FEATURES

**EXPANSION CARGO POCKETS** are reinforced with KEVLAR® fabric inside.

**INDEPENDENT STRETCH WAISTBAND** for unrestricted fit and no-gap protection with liner.

**DIAMOND CROTCH GUSSET** distributes stress in both shell and liner for durability.

**REVERSE BOOT CUT** is shorter in the back to avoid premature cuff wear.

**TRIMTRAX® THREAD PROTECTION** with patented cording lasts far longer on sewn on trim than conventional stitching.

**DOUBLE-STITCHED SEAMS** with 8–10 stitches per inch for longer service life.

Your choice of **MATERIALS**: Outer Shells, Moisture Barriers, Thermal Liners, Reinforcements, and Reflective Trim.

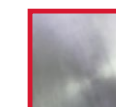
Your choice of **OPTIONS**: Closures, Pockets, Holders/Clips/Straps, Suspenders, and Harnesses/Loops/Pockets.

**MEN'S & WOMEN'S SIZES**: Waist and Inseam.



Certified to NFPA 1971 (Structural Fire Fighting).

MADE IN THE USA



ALSO AVAILABLE IN PROXIMITY



# CLASSIX® JACKET



## CLASSIX® JACKET

Our most affordable turnout gear, CLASSIX® delivers Globe quality at a value price. The drop-shoulder design jacket comes with a long list of standard features to make this far more than basic gear.

## MORE STANDARD FEATURES

**DROP-SHOULDER DESIGN** moves seam beyond the shoulder for improved reach and reduced coat ride up.

**SHORTER COLLAR** for better interface with helmet.

**DOUBLE SLEEVE WELLS** with NOMEX® wristers to keep water out and interface with all glove styles.

**EXTENDED BACK** option allows you to choose to extend the back by 3" or 6" for additional overlap and lettering below the SCBA.

**LINER ACCESS OPENING** for easy access between the layers.

**DOUBLE-STITCHED SEAMS** with 8–10 stitches per inch for longer service life.

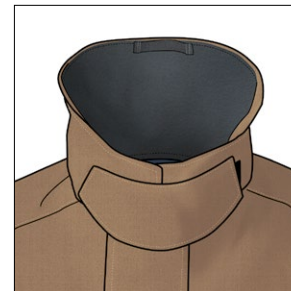
Your choice of **MATERIALS**: Outer Shells, Moisture Barriers, Thermal Liners, Reinforcements, Reflective Trim, and Lettering.

Your choice of **OPTIONS**: Closures, Pockets, Holders/Clips/Straps, Patches, and Sleeve Wells/Wristers.

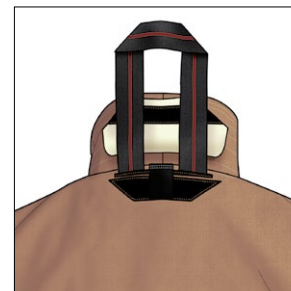
**MEN'S & WOMEN'S SIZES**: Chest, Length, and Sleeve.



**DUAL-ACTION CARGO POCKETS** with KEVLAR® fabric reinforcement inside.



**FREE-HANGING THROAT TAB** stays out of your way when not deployed.



**YOCCO™ DRAG RESCUE DEVICE** is easy to deploy when you need it, out of the way when you don't.



**TRIMTRAX® THREAD PROTECTION** with patented cording lasts far longer on sewn on trim than conventional stitching.

## CLASSIX® METRO™ JACKET

This metro-inspired option set includes an extended back for additional overlap and lettering below the SCBA, expansion pockets, and telescoping sleeve band with two wristers – one on the outer shell and one on the liner with a thumb loop. And the jacket includes a host of standard CLASSIX® features.

## METRO™ SUGGESTED OPTIONS

**6" EXTENDED BACK** with lower trim band.

**2" x 10" x 6" EXPANSION POCKETS** with KEVLAR® fabric reinforcement pouch inside.

**HOOK AND DEE FRONT CLOSURE** with VELCRO® inside.

**CUFF REINFORCEMENTS** made from outer shell fabric.

**TELESCOPING SLEEVE BAND** with two grey NOMEX® wristers, one on the outer shell and one on the liner with a thumb loop.



Certified to NFPA 1971 (Structural Fire Fighting).

MADE IN THE USA



Shown with METRO™ suggested options.



# CLASSIX® PANTS



Shown with optional pockets and grey suede reinforcements on knees.

## CLASSIX® PANTS

Our most affordable turnout gear, CLASSIX® delivers Globe quality at a value price. The roomy, low-rise pants come with a long list of standard features to make this far more than basic gear.

## MORE STANDARD FEATURES

**INDEPENDENT WAISTBAND** for unrestricted fit and no-gap protection with liner.

**REVERSE BOOT CUT** is shorter in the back to avoid premature cuff wear.

**LINER ACCESS OPENING** for easy access between the layers.

**TRIMTRAX® THREAD PROTECTION** with patented cording lasts far longer on sewn on trim than conventional stitching.

**DOUBLE-STITCHED SEAMS** with 8–10 stitches per inch for longer service life.

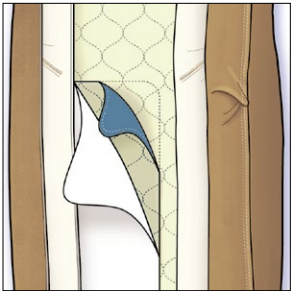
Your choice of **MATERIALS**: Outer Shells, Moisture Barriers, Thermal Liners, Reinforcements, and Reflective Trim.

Your choice of **OPTIONS**: Closures, Pockets, Holders/Clips/Straps, Suspenders, and Harnesses/Loops/Pockets.

**MEN'S & WOMEN'S SIZES**: Waist and Inseam.



**VERTICAL FLY** with hook and dee positive closure and take-up straps or optional belt.



**THERMALLY ENHANCED FLEX LINER KNEES** add mobility and a layer of thermal and moisture barrier to protect this high-compression area.



**DIAMOND CROTCH GUSSET** distributes stress in both shell and liner for durability.



**PADDED H-BACK RIPCORD SUSPENDERS** attach to horizontal loops so there is no hardware to dig in or pull out.

## CLASSIX® METRO™ PANTS

This metro-inspired option set includes expansion pockets, SILIZONE® knee padding, and DRAGONHIDE® reinforcements on the knees and cuffs. And the pants include a host of standard CLASSIX® features.

## METRO™ SUGGESTED OPTIONS

**2" x 10" x 10" EXPANSION POCKETS** with KEVLAR® fabric reinforcement pouch inside.

**TAKE-UP STRAPS** made from outer shell fabric with postman slide buckle.

**DRAGONHIDE® REINFORCEMENTS** on knees and cuffs.

**SILIZONE® KNEE PADDING** on liner.



Certified to NFPA 1971 (Structural Fire Fighting).

MADE IN THE USA



Shown with METRO™ suggested options.





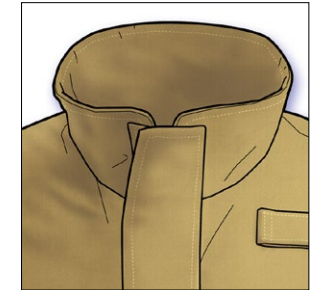
**Nomex.** **Kevlar.**

An unstoppable combination of strength and inherent flame resistance.

## TECHRESCUE™: SPECIALIZED GEAR YOU CAN WEAR EVERY DAY

In today's world, where your fire/rescue mission is more than 80 percent rescue, having the right gear for the job is more critical than ever. Flash fire-resistant, highly breathable, liquid-resistant, lighter weight, and less restrictive gear is a must for you to perform your best in all conditions for extended periods of time. TECHRESCUE™ is dual certified to NFPA 1951 (Technical Rescue) and 1999 (Emergency Medical), so it can be the gear to wear every day when you're not fighting fires.

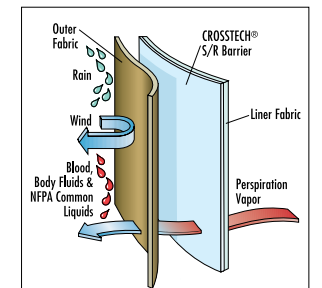
# TECHRESCUE™ COAT



**ZIP-UP COLLAR** for weather protection or lays down flat for ventilation.



**DROP-SHOULDER DESIGN** moves seam beyond the shoulder for improved reach and reduced coat ride up.



**GORE® CROSSTECH® S/R FABRIC LINING** is flame resistant, breathable, and resistant to body fluids and NFPA common liquids\*.



Optional **FLEECE LINER** can be worn independently or zipped into coat as winter liner.

## MORE STANDARD FEATURES

**CARGO/HANDWARMER POCKETS** have expansion pleats with integral handwarmer behind.

**DOUBLE STORM FLY FRONT** with hook and loop over hi-temp polymer zipper for complete waterproof integrity.

**FREE-HANGING LINER** is more flexible and allows customization of outer shell without penetrating the barrier.

**ACCESS OPENING** at hemline allows for barrier inspection and testing.

**DOUBLE-STITCHED SEAMS** with 8–10 stitches per inch for longer service life.

Your choice of **MATERIALS**: Outer Shells, Reinforcements, Reflective Trim, and Lettering.

Your choice of **OPTIONS**: Pockets, Holders/Clips/Straps, and Patches.

Your choice of **SIZES**: Chest and Sleeve, and both Men's and Women's patterns.



Certified to NFPA 1951 (Technical Rescue) and 1999 (Emergency Medical).

**MADE IN THE USA**

\* NFPA defined "common liquids": Battery acid (37% sulfuric), ASTM Red. Fuel C (unleaded gas surrogate), hydraulic fluid (phosphate-ester), aqueous film-forming foam (AFFF), and swimming pool chlorine solution (65% free Cl).



# TECHRESCUE™ JACKET



## MORE STANDARD FEATURES

**ELASTICIZED BACK HEM** for a closer fit.

**CARGO/HANDWARMER POCKETS** have expansion pleats with integral handwarmer behind.

**DOUBLE STORM FLY FRONT** with hook and loop over hi-temp polymer zipper for complete waterproof integrity.

**FREE-HANGING LINER** is more flexible and allows customization of outer shell without penetrating the barrier.


**ACCESS OPENING** at hemline allows for barrier inspection and testing.

**DOUBLE-STITCHED SEAMS** with 8–10 stitches per inch for longer service life.

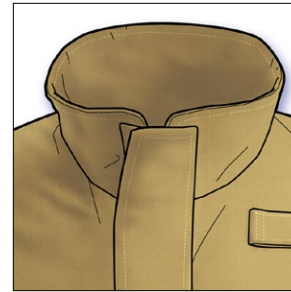
Your choice of **MATERIALS**: Outer Shells, Reinforcements, Reflective Trim, and Lettering.

Your choice of **OPTIONS**: Pockets, Holders/Clips/Straps, and Patches.

Your choice of **SIZES**: Chest and Sleeve, and both Men's and Women's patterns.

 Certified to NFPA 1951 (Technical Rescue) and 1999 (Emergency Medical).

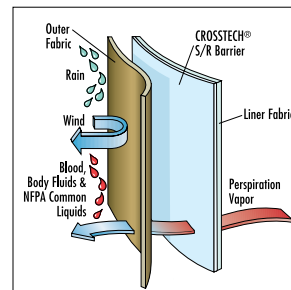
MADE IN THE USA



**ZIP-UP COLLAR** for weather protection or lays flat for ventilation.



**DROP-SHOULDER DESIGN** moves seam beyond the shoulder for improved reach and reduced coat ride up.



**GORE® CROSSTECH® S/R FABRIC LINING** is flame resistant, breathable, and resistant to body fluids and NFPA common liquids.



Optional **FLEECE LINER** can be worn independently or zipped into jacket as winter liner.

# TECHRESCUE™ PANTS



Shown with optional reinforced knees made from outer shell fabric.

## MORE STANDARD FEATURES

**VERTICAL FLY** with elasticized waist for closer fit and easier donning and doffing.

**FREE-HANGING LINER** is more flexible and allows customization of outer shell without penetrating the barrier.


**ACCESS OPENING** at fly allows for barrier inspection and testing.

**DOUBLE-STITCHED SEAMS** with 8–10 stitches per inch for longer service life.

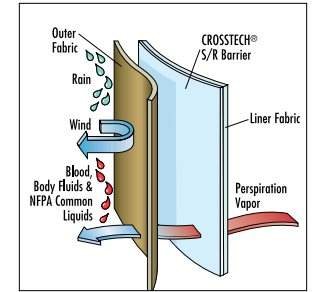
Your choice of **MATERIALS**: Outer Shells, Reinforcements, and Reflective Trim.

Your choice of **OPTIONS**: Pockets, Holders/Clips/Straps, and Suspenders.

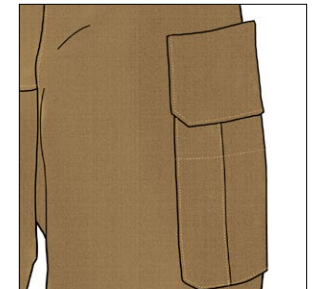
Your choice of **SIZES**: Waist and Inseam, and both Men's and Women's patterns.

 Certified to NFPA 1951 (Technical Rescue) and 1999 (Emergency Medical).

MADE IN THE USA



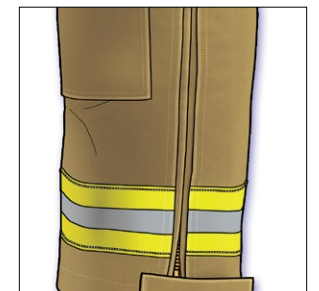
**GORE® CROSSTECH® S/R FABRIC LINING** is flame resistant, breathable, and resistant to body fluids and NFPA common liquids.



**CARGO POCKETS** with expansion pleats reinforced with KEVLAR® inside for longer wear.



**OPTIONAL REINFORCED KNEES** with an extra layer of outer shell fabric adds protection and durability.



**STANDARD LEG ZIPPERS** with gusseted openings allow the pants to go on and off easily over footwear.



# EMSRESCUE™: PROTECTION AND ALL-WEATHER GEAR

Designed to protect you against the challenges you battle every day—blood, body fluid, common chemicals, and the weather—EMSRESCUE™ is waterproof, breathable, lightweight, and windproof. Choose a flame-resistant outer shell for flash fire resistance or a hi-vis outer shell for day and night visibility. Either way, EMSRESCUE™ is certified to NFPA 1999 (Emergency Medical) for your safety.



GORE®  
CROSSTECH®  
PRODUCTS

Built with a GORE® CROSSTECH® fabric liner for performance unmatched by any other waterproof, breathable barrier.

## EMSRESCUE™ JACKET



**ZIP-UP COLLAR** for weather protection or lays down flat for ventilation.



**DROP-SHOULDER DESIGN** moves seam beyond the shoulder for improved reach and reduced coat ride up.

### MORE STANDARD FEATURES

**ELASTICIZED BACK HEM** for a closer fit.

**CARGO/HANDWARMER POCKETS** have expansion pleats with integral handwarmer behind.

**DOUBLE STORM FLY FRONT** with hook and loop over hi-temp polymer zipper for complete waterproof integrity.

**FREE-HANGING LINER** is more flexible and allows customization of outer shell without penetrating the barrier.

**ACCESS OPENING** at hemline allows for barrier inspection and testing.

**DOUBLE-STITCHED SEAMS** with 8–10 stitches per inch for longer service life.

Your choice of **MATERIALS**: Outer Shells, Reinforcements, Reflective Trim, and Lettering.

Your choice of **OPTIONS**: Pockets, Holders/Clips/Straps, and Patches.

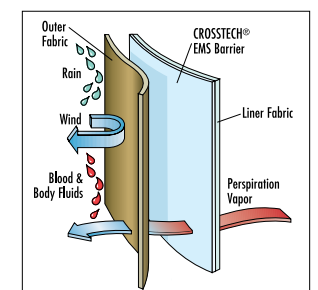
Your choice of **SIZES**: Chest and Sleeve, and both Men's and Women's patterns.

Also available in **HI-VIS** to meet ANSI 107 (Class 3).



Certified to NFPA 1999 (Emergency Medical).

MADE IN THE USA



**GORE® CROSSTECH® EMS FABRIC LINING** is highly breathable and resistant to body fluids and NFPA common liquids.



Optional **FLEECE LINER** can be worn independently or zipped into jacket as winter liner.



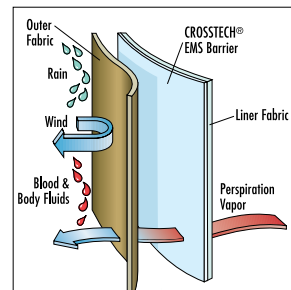
# EMSRESCUE™ COAT



**ZIP-UP COLLAR** for weather protection or lays down flat for ventilation.



**DROP-SHOULDER DESIGN** moves seam beyond the shoulder for improved reach and reduced coat ride up.



**GORE® CROSSTECH® EMS FABRIC LINING** is highly breathable and resistant to body fluids and NFPA common liquids.



Optional **FLEECE LINER** can be worn independently or zipped into coat as winter liner.

## MORE STANDARD FEATURES

**CARGO/HANDWARMER POCKETS** have expansion pleats with integral handwarmer behind.

**DOUBLE STORM FLY FRONT** with hook and loop over hi-temp polymer zipper for complete waterproof integrity.

**FREE-HANGING LINER** is more flexible and allows customization of outer shell without penetrating the barrier.

**ACCESS OPENING** at hemline allows for barrier inspection and testing.


**DOUBLE-STITCHED SEAMS** with 8–10 stitches per inch for longer service life.

Your choice of **MATERIALS**: Outer Shells, Reinforcements, Reflective Trim, and Lettering.

Your choice of **OPTIONS**: Pockets, Holders/Clips/Straps, and Patches.

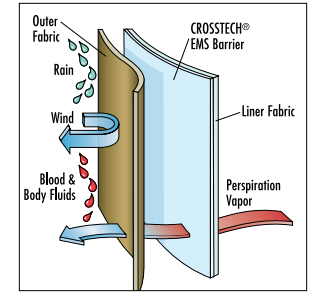
Your choice of **SIZES**: Chest and Sleeve, and both Men's and Women's patterns.

Also available in **HI-VIS** to meet ANSI 107 (Class 3).

 Certified to NFPA 1999 (Emergency Medical).

MADE IN THE USA

# EMSRESCUE™ PANTS



**GORE® CROSSTECH® EMS FABRIC LINING** is highly breathable and resistant to body fluids and NFPA common liquids.



**CARGO POCKETS** with expansion pleats reinforced with KEVLAR® inside for longer wear.



**OPTIONAL REINFORCED KNEES** with an extra layer of outer shell fabric adds protection and durability.



**STANDARD LEG ZIPPERS** with gusseted openings allow the pants to go on and off easily over footwear.

Shown with optional reinforced knees made from outer shell fabric.

## MORE STANDARD FEATURES

**VERTICAL FLY** with elasticized waist for closer fit and easier donning and doffing.

**FREE-HANGING LINER** is more flexible and allows customization of outer shell without penetrating the barrier.

**ACCESS OPENING** at fly allows for barrier inspection and testing.


**DOUBLE-STITCHED SEAMS** with 8–10 stitches per inch for longer service life.

Your choice of **MATERIALS**: Outer Shells, Reinforcements, and Reflective Trim.

Your choice of **OPTIONS**: Pockets, Holders/Clips/Straps, and Suspenders.

Your choice of **SIZES**: Waist and Inseam, and both Men's and Women's patterns.

Also available in **HI-VIS** to meet ANSI 107 (Class 3).

 Certified to NFPA 1999 (Emergency Medical).

MADE IN THE USA



# STICK IT TO WET ICE

## INTRODUCING VIBRAM® ARCTIC GRIP PRO

### GLOBE BOOTS: ATHLETIC FOOTWEAR FOR FIREFIGHTERS

With a unique cushioned and contoured sole and athletic footwear construction, Globe boots are flexible like your feet, grip like no other, and feel broken in right out of the box. We even changed out all the heavy and conductive steel components to lighter, stronger, and insulating advanced composites. And they fit so securely, you can even run in them.

All Globe boots share the same foundation but have uppers designed to meet your specific needs and the differing requirements of Structural, Proximity, Technical, Wildland, Liquid Splash, and Emergency Medical NFPA Standards. Just put your feet in a pair, and you'll say, "Wow!"

**GORE®**  
**CROSSTECH®**  
PRODUCTS

Built with GORE® CROSSTECH® footwear fabric for performance unmatched by any other waterproof, breathable barrier.



*Deep lugs made with an advanced brush-like filler system for unparalleled traction even after wear*

### FEATURES

- Two times more slip resistant on wet ice than current industry-leading Globe outsole
- Best protection against slips and falls in colder temperatures
- State-of-the-art sole technology specifically engineered to perform on wet ice
- Deep lugs made with an advanced brush-like filler system for unparalleled traction even after wear
- No sacrifice to durability or service life compared to current Globe outsole
- Stays flexible to -40°F/-40°C
- Available on SUPRALITE®, SUPREME™, SHADOW™, TECHNICAL 10", and EMS/WILDLAND 10" styles





# SUPRALITE®

SUPRALITE® is even lighter and more flexible by design. The all-new and more aggressive PREDATOR™ outsole keeps the superior grip of our original, while the uppers feature the world's first use of DRAGONHIDE® – a Globe exclusive that is so tough that we use it to reinforce turnout gear. Together with the famous Globe fit, this comes the closest yet to feeling like your favorite sneakers, while providing the protection, support, and slip resistance you depend on.




Available with optional:



## EXTENDED SIZE RANGE

**Men's:** Full Sizes 5-18 and Half Sizes 5½-15½ in Narrow, Medium, Wide, and X-Wide widths. Wide calf model available in all sizes.

**Women's:** Full Sizes 5-12 and Half Sizes 5½-11½ in Narrow, Medium, Wide, and X-Wide widths. Wide calf model available in all sizes.

 Certified to NFPA 1971 (Structural Fire Fighting) and NFPA 1992 (Liquid Splash).

MADE IN THE USA

- DRAGONHIDE® FABRIC**  
Fabric panels in shaft and flex joints are made from DRAGONHIDE® – a highly abrasion-, cut-, flame-, and water-resistant fabric so tough that it is used to reinforce turnout gear.
- GORE® CROSSTECH® FOOTWEAR FABRIC**  
A full-height bootie liner made from a package of Omaha lining fabric, 300g insulation, and GORE® CROSSTECH® moisture barrier provides protection unmatched by any other waterproof, breathable barrier.
- FLAME-RESISTANT, WATER-RESISTANT LEATHER**  
Pebble grain leather with tumbled leather collar.
- 3M™ SCOTCHLITE™ REFLECTIVE MATERIAL**  
Flame-resistant fluorescent and reflective piping.
- HEELPORT™ INTERNAL FIT SYSTEM**  
Holds your heel securely so it won't slip while cushioning your ankle.
- COMPOSITE HEEL COUNTER**  
Individually molded to fit each size perfectly.
- COMPOSITE SHANK**  
Lighter than steel, doesn't transmit heat or cold, springs back to shape better.
- COMPOSITE PUNCTURE PROTECTION**  
Far more flexible than a steel plate and doesn't transmit heat or cold. Exceeds NFPA standards.
- VIBRAM® CONTOURED CUP OUTSOLE**  
Molded outsole wraps onto the leather upper for athletic shoe performance. Flame-, abrasion-, oil-, acid-, and slip-resistant compound engineered for high traction and durability, even during prolonged exposure to extremes of heat and cold.
- SLIP-RESISTANT TREAD**  
Siping—thin slits cut into flat areas across the sole—opens up when flexed to provide additional traction on water and ice. Self-cleaning lugs and omnidirectional tread pattern designed for superior performance in all terrains and when working on ladders. Optional VIBRAM® ARCTIC GRIP PRO outsoles are available for even better slip resistance on wet ice.

- PULL STRAPS**  
Flexible NOMEX® webbing pull straps reinforced with leather slide easily under turnout pants and are kind to your legs.
- KEVLAR® BLEND PROTECTIVE SHIELD**  
Protects the GORE® CROSSTECH® moisture barrier, provides cut resistance, and adds thermal protection.
- PADDED COMPOSITE SHIN GUARD**  
Provides extra protection when you are working on a ladder.

DuPont™  
**Kevlar®**

- VIBRAM® TOE BUMPER**  
Made from the same rugged compound as the outsole for abrasion resistance when crawling.
- COMPOSITE SAFETY TOE CAP**  
Lighter than steel, doesn't transmit heat or cold, and exceeds NFPA standards for safety.
- DUAL-DENSITY ENHANCED 3D MOLDED FOOTBED SYSTEM**  
Removable dual-density footbeds are contoured to cradle and cushion the bottom of your feet and to provide arch support. Urethane foam bottom layer provides durable cushioning while a micro-cellular open-cell foam top layer delivers cool, all-day comfort. Moisture-wicking and anti-microbial fabric top pulls moisture away from your feet. An additional set of EVA inserts are provided to install under the footbeds when a snugger fit is desired.

- 3D COMPOSITE LASTING BOARD**  
Boot uppers are lasted to a molded and contoured lasting board with built-in flex zone in the forefoot and a torsionally stable heel. Works together with the 3D molded footbed to conform to the shape of your foot.

- ATHLETIC FOOTWEAR CONSTRUCTION**  
Two-part cross-linking adhesive bonds outsoles to the upper. Without stiff welts and ribbed mid-soles, this attachment process is far more flexible.

- FACTORY REFURBISHING AVAILABLE**  
Call customer service for details: 1-800-232-8323



# SUPREME™

Step into a pair of SUPREME™ boots, and you will know instantly why these boots have taken the market by storm. The combination of the cushioned and contoured sole, the flexible athletic footwear construction, and the internal fit system makes this boot fit like a pair of sneakers. And the specially designed and formulated outsole gives you the best grip in the business in wet, dry, and ice.



Available with optional:



## EXTENDED SIZE RANGE

**Men's:** Full Sizes 5-18 and Half Sizes 5½-15½ in Narrow, Medium, Wide, and X-Wide widths. Wide calf model available in all sizes.

**Women's:** Full Sizes 5-12 and Half Sizes 5½-11½ in Narrow, Medium, Wide, and X-Wide widths. Wide calf model available in all sizes.



Certified to NFPA 1971 (Structural Fire Fighting) and NFPA 1992 (Liquid Splash). Berry compliant version available. CSA certified version available.

MADE IN THE USA

## FLAME-RESISTANT, WATER-RESISTANT HEAVY-DUTY LEATHER

Specially softened tumbled leather in high-flex areas to move with you.

## GORE® CROSSTECH® FOOTWEAR FABRIC

A full-height bootie liner made from a package of Omaha lining fabric, 300g insulation, and GORE® CROSSTECH® moisture barrier provides protection unmatched by any other waterproof, breathable barrier.



## 3M™ SCOTCHLITE™ REFLECTIVE MATERIAL

Flame-resistant fluorescent and reflective material for added visibility.



## HEELPORT™ INTERNAL FIT SYSTEM

Holds your heel securely so it won't slip while cushioning your ankle.

## COMPOSITE HEEL COUNTER

Individually molded to fit each size perfectly.

## COMPOSITE SHANK

Lighter than steel, doesn't transmit heat or cold, springs back to shape better.

## COMPOSITE PUNCTURE PROTECTION

Far more flexible than a steel plate and doesn't transmit heat or cold. Exceeds NFPA standards.

## VIBRAM® CONTOURED CUP OUTSOLE

Molded outsole wraps onto the leather upper for athletic shoe performance. Flame-, abrasion-, oil-, acid-, and slip-resistant compound engineered for high traction and durability, even during prolonged exposure to extremes of heat and cold.



## SLIP-RESISTANT TREAD

Siping—thin slits cut into flat areas across the sole—opens up when flexed to provide additional traction on water and ice. Self-cleaning lugs and omnidirectional tread pattern designed for superior performance in all terrains and when working on ladders. Optional VIBRAM® ARCTIC GRIP PRO outsoles are available for even better slip resistance on wet ice.

## FACTORY REFURBISHING AVAILABLE

Call customer service for details: 1-800-232-8323

## PULL STRAPS

Flexible NOMEX® webbing pull straps reinforced with leather slide easily under turnout pants and are kind to your legs.

## KEVLAR® BLEND PROTECTIVE SHIELD

Protects the GORE® CROSSTECH® moisture barrier, provides cut resistance, and adds thermal protection.



## PADDED COMPOSITE SHIN GUARD

Provides extra protection when you are working on a ladder.

## COMPOSITE SAFETY TOE CAP

Lighter than steel, doesn't transmit heat or cold, and exceeds NFPA standards for safety.

## VIBRAM® TOE BUMPER

Made from the same rugged compound as the outsole for abrasion resistance when crawling.

## DUAL-DENSITY ENHANCED 3D MOLDED FOOTBED SYSTEM

Removable dual-density footbeds are contoured to cradle and cushion the bottom of your feet and to provide arch support. Urethane foam bottom layer provides durable cushioning while a micro-cellular open-cell foam top layer delivers cool, all-day comfort. Moisture-wicking and anti-microbial fabric top pulls moisture away from your feet. An additional set of EVA inserts are provided to install under the footbeds when a snugger fit is desired.

## 3D COMPOSITE LASTING BOARD

Lasted to boot uppers with a built-in flex zone in the forefoot and a torsionally stable heel. Works together with the footbed to conform to your foot's shape.

## ATHLETIC FOOTWEAR CONSTRUCTION

Two-part cross-linking adhesive bonds outsoles to the upper. Without stiff welts and ribbed mid-soles, this attachment process is far more flexible.



# SHADOW™

SHADOW™ shares the remarkably flexible platform, cushioned and contoured sole, and internal fit system that make Globe boots fit better, grip better, and feel broken in right out of the box. The all-black SHADOW™ has also been designed with a lower-profile collar with flexible NOMEX® webbing pull straps to slide more easily under narrower turnout gear pants.



Available with optional:



## EXTENDED SIZE RANGE

**Men's:** Full Sizes 5-18 and Half Sizes 5½-15½ in Narrow, Medium, Wide, and X-Wide widths. Wide calf model available in all sizes.

**Women's:** Full Sizes 5-12 and Half Sizes 5½-11½ in Narrow, Medium, Wide, and X-Wide widths. Wide calf model available in all sizes.

**SEI** Certified to NFPA 1971 (Structural Fire Fighting) and NFPA 1992 (Liquid Splash).

MADE IN THE USA

## FLAME-RESISTANT, WATER-RESISTANT HEAVY-DUTY LEATHER

Specially softened tumbled leather in high-flex areas to move with you.

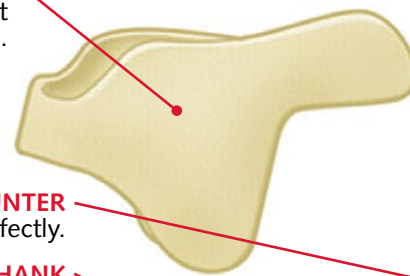
## GORE® CROSSTECH® FOOTWEAR FABRIC

A full-height bootie liner made from a package of Omaha lining fabric, 300g insulation, and GORE® CROSSTECH® moisture barrier provides protection unmatched by any other waterproof, breathable barrier.



## HEELPORT™ INTERNAL FIT SYSTEM

Holds your heel securely so it won't slip while cushioning your ankle.



## COMPOSITE HEEL COUNTER

Individually molded to fit each size perfectly.

## COMPOSITE SHANK

Lighter than steel, doesn't transmit heat or cold, springs back to shape better.

## COMPOSITE PUNCTURE PROTECTION

Far more flexible than a steel plate and doesn't transmit heat or cold. Exceeds NFPA standards.

## VIBRAM® CONTOURED CUP OUTSOLE

Molded outsole wraps onto the leather upper for athletic shoe performance. Flame-, abrasion-, oil-, acid-, and slip-resistant compound engineered for high traction and durability, even during prolonged exposure to extremes of heat and cold.



## SLIP-RESISTANT TREAD

Siping—thin slits cut into flat areas across the sole—opens up when flexed to provide additional traction on water and ice. Self-cleaning lugs and omnidirectional tread pattern designed for superior performance in all terrains and when working on ladders. Optional VIBRAM® ARCTIC GRIP PRO outsoles are available for even better slip resistance on wet ice.

## FACTORY REFURBISHING AVAILABLE

Call customer service for details: 1-800-232-8323

**FLEXIBLE NOMEX® WEBBING PULL STRAPS**  
Slide easily under turnout pants and are kind to your legs.

## KEVLAR® BLEND PROTECTIVE SHIELD

Protects the GORE® CROSSTECH® moisture barrier, provides cut resistance, and adds thermal protection.



## PADDED COMPOSITE SHIN GUARD

Provides extra protection when you are working on a ladder.

## COMPOSITE SAFETY TOE CAP

Lighter than steel, doesn't transmit heat or cold, and exceeds NFPA standards for safety.

## VIBRAM® TOE BUMPER

For abrasion resistance when crawling. Cemented and two-needle stitched to the vamp.

## DUAL-DENSITY ENHANCED 3D MOLDED FOOTBED SYSTEM

Removable dual-density footbeds are contoured to cradle and cushion the bottom of your feet and to provide arch support. Urethane foam bottom layer provides durable cushioning while a micro-cellular open-cell foam top layer delivers cool, all-day comfort. Moisture-wicking and anti-microbial fabric top pulls moisture away from your feet. An additional set of EVA inserts are provided to install under the footbeds when a snugger fit is desired.

## 3D COMPOSITE LASTING BOARD

Lasted to boot uppers with a built-in flex zone in the forefoot and a torsionally stable heel. Works together with the footbed to conform to the shape of your foot.

## ATHLETIC FOOTWEAR CONSTRUCTION

Two-part cross-linking adhesive bonds outsoles to the upper. Without stiff welts and ribbed mid-soles, this attachment process is far more flexible.





# ONYX®


Now you can enjoy the benefits of Globe boots at a value price. The new ONYX® boots share the same cushioned and contoured outsole and athletic footwear construction as our SHADOW™ boots, so they are remarkably flexible, grip like crazy, and fit like no other.



## EXTENDED SIZE RANGE

**Men's:** Full Sizes 5-18 and Half Sizes 5½-15½ in Narrow, Medium, Wide, and X-Wide widths.

**Women's:** Full Sizes 5-12 and Half Sizes 5½-11½ in Narrow, Medium, Wide, and X-Wide widths.

 Certified to NFPA 1971 (Structural Fire Fighting) and NFPA 1992 (Liquid Splash).

MADE IN THE USA

**FLAME-RESISTANT, WATER-RESISTANT LEATHER**  
Specially softened, tumbled leather in high-flex areas to move with you.

**GORE® CROSSTECH® FOOTWEAR FABRIC**  
A full-height bootie liner made from a package of Omaha lining fabric, 300g insulation, and GORE® CROSSTECH® moisture barrier provides protection unmatched by any other waterproof, breathable barrier.

**GORE® CROSSTECH®**  
PRODUCTS

**HEELPORT™ INTERNAL FIT SYSTEM**  
Holds your heel securely so it won't slip while cushioning your ankle.

**COMPOSITE HEEL COUNTER**  
Individually molded to fit each size perfectly.

**COMPOSITE SHANK**  
Lighter than steel, doesn't transmit heat or cold, springs back to shape better.

**COMPOSITE PUNCTURE PROTECTION**  
Far more flexible than a steel plate and doesn't transmit heat or cold. Exceeds NFPA standards.

**VIBRAM® CONTOURED CUP OUTSOLE**  
Molded outsole wraps onto the leather upper for athletic shoe performance. Flame-, abrasion-, oil-, acid-, and slip-resistant compound engineered for high traction and durability, even during prolonged exposure to extremes of heat and cold.



**SLIP-RESISTANT TREAD**  
Siping—thin slits cut into flat areas across the sole—opens up when flexed to provide additional traction on water and ice. Self-cleaning lugs and omnidirectional tread pattern designed for superior performance in all terrains and when working on ladders.

**FLEXIBLE NOMEX® WEBBING PULL STRAPS**  
Slide easily under turnout pants and are kind to your legs.

**PADDED COMPOSITE SHIN GUARD**  
Provides extra protection when you are working on a ladder.

**COMPOSITE SAFETY TOE CAP**  
Lighter than steel, doesn't transmit heat or cold, and exceeds NFPA standards for safety.

**VIBRAM® TOE BUMPER**  
For abrasion resistance when crawling. Cemented and two-needle stitched to the vamp.

**DUAL-DENSITY ENHANCED 3D MOLDED FOOTBED SYSTEM**  
Removable dual-density footbeds are contoured to cradle and cushion the bottom of your feet and to provide arch support. Urethane foam bottom layer provides durable cushioning while a micro-cellular open-cell foam top layer delivers cool, all-day comfort. Moisture-wicking and anti-microbial fabric top pulls moisture away from your feet. An additional set of EVA inserts are provided to install under the footbeds when a snugger fit is desired.

**3D COMPOSITE LASTING BOARD**  
Lasted to boot uppers with a built-in flex zone in the forefoot and a torsionally stable heel. Works together with the footbed to conform to the shape of your foot.

**ATHLETIC FOOTWEAR CONSTRUCTION**  
Two-part cross-linking adhesive bonds outsoles to the upper. Without stiff welts and ribbed mid-soles, this attachment process is far more flexible.

**FACTORY REFURBISHING AVAILABLE**  
Call customer service for details:  
1-800-232-8323



# PROXIMITY

Say goodbye to heavy, stiff, rubber boots forever. Globe PROXIMITY (patented) is the world's first leather Proximity boot. It's remarkably flexible, with the same cushioned and contoured sole, athletic footwear construction, and internal fit system as our original SUPREME™ structural boots. Meeting the radiant heat requirements of Proximity as well as the Structural requirements of NFPA 1971, PROXIMITY can be the one boot you wear for all your calls.



## EXTENDED SIZE RANGE

**Men's:** Full Sizes 5-17 and Half Sizes 5½-15½ in Narrow, Medium, Wide, and X-Wide widths. Wide calf model available in all sizes.

**Women's:** Full Sizes 5-12 and Half Sizes 5½-11½ in Narrow, Medium, Wide, and X-Wide widths. Wide calf model available in all sizes.



Certified to NFPA 1971 (Proximity Fire Fighting and Structural Fire Fighting) and NFPA 1992 (Liquid Splash). Berry compliant.

MADE IN THE USA

## FLAME-RESISTANT, WATER-RESISTANT HEAVY-DUTY LEATHER

Specially softened tumbled leather in high-flex areas to move with you.

## GORE® CROSSTECH® FOOTWEAR FABRIC

A full-height bootie liner made from a package of Omaha lining fabric, 300g insulation, and GORE® CROSSTECH® moisture barrier provides protection unmatched by any other waterproof, breathable barrier.



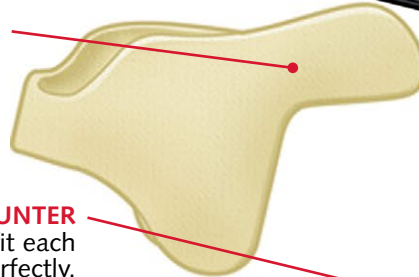
## 3M™ SCOTCHLITE™ REFLECTIVE MATERIAL

For added visibility.



## HEELPORT™ INTERNAL FIT SYSTEM

Holds your heel securely so it won't slip while cushioning your ankle.



## COMPOSITE HEEL COUNTER

Individually molded to fit each size perfectly.

## COMPOSITE SHANK

Lighter than steel, doesn't transmit heat or cold, springs back to shape better.

## COMPOSITE PUNCTURE PROTECTION

Far more flexible than a steel plate and doesn't transmit heat or cold. Exceeds NFPA standards.

## VIBRAM® CONTOURED CUP OUTSOLE

Molded outsole wraps onto the leather upper for athletic shoe performance. Flame-, abrasion-, oil-, acid-, and slip-resistant compound engineered for high traction and durability, even during prolonged exposure to extremes of heat and cold.



## SLIP-RESISTANT TREAD

Siping—thin slits cut into flat areas across the sole—opens up when flexed to provide additional traction on water and ice. Self-cleaning lugs and omnidirectional tread pattern designed for superior performance in all terrains and when working on ladders.

## FACTORY REFURBISHING AVAILABLE

Call customer service for details: 1-800-232-8323

## PULL STRAPS

Flexible NOMEX® webbing pull straps reinforced with leather slide easily under turnout pants and are kind to your legs.

## KEVLAR® BLEND PROTECTIVE SHIELD

Two layers of KEVLAR® blend batting separated by spacer fabric protect the GORE® CROSSTECH® moisture barrier, provides cut resistance, and adds thermal protection.



## PADDED COMPOSITE SHIN GUARD

Provides extra protection when you are working on a ladder.

## ALUMINIZED PBI® FABRIC

An added layer between the leather shell and the KEVLAR® blend fiber batting provides additional radiant and conductive heat protection to meet the higher thermal requirements for proximity firefighting.



## COMPOSITE SAFETY TOE CAP

Lighter than steel, doesn't transmit heat or cold, and exceeds NFPA standards for safety.

## VIBRAM® TOE BUMPER

For abrasion resistance when crawling. Cemented and two-needle stitched to the vamp.

## DUAL-DENSITY ENHANCED 3D MOLDED FOOTBED SYSTEM

Removable dual-density footbeds are contoured to cradle and cushion the bottom of your feet and to provide arch support. Urethane foam bottom layer provides durable cushioning while a micro-cellular open-cell foam top layer delivers cool, all-day comfort. Moisture-wicking and anti-microbial fabric top pulls moisture away from your feet. An additional set of EVA inserts are provided to install under the footbeds when a snugger fit is desired.

## 3D COMPOSITE LASTING BOARD

Lasted to boot uppers with a built-in flex zone in the forefoot and a torsionally stable heel. Works together with the footbed to conform to your foot's shape.

## ATHLETIC FOOTWEAR CONSTRUCTION

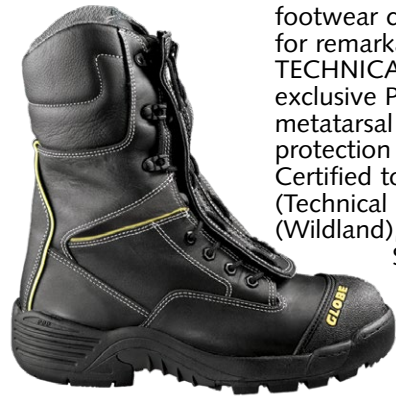
Two-part cross-linking adhesive bonds outsoles to the upper. Without stiff welts and ribbed mid-soles, this attachment process is far more flexible.





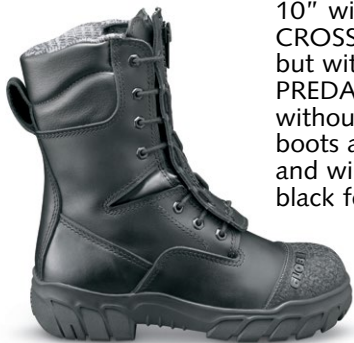
## TECHNICAL 10"

(AVAILABLE WITH OPTIONAL VIBRAM® ARCTIC GRIP PRO)  
Built with our unique athletic footwear construction for remarkable flexibility, TECHNICAL includes an exclusive PORON® XRD™ metatarsal guard for impact protection you'll hardly feel. Certified to NFPA 1951 (Technical Rescue), NFPA 1977 (Wildland), NFPA 1992 (Liquid Splash), and NFPA 1999 (Emergency Medical). CSA certified version available.



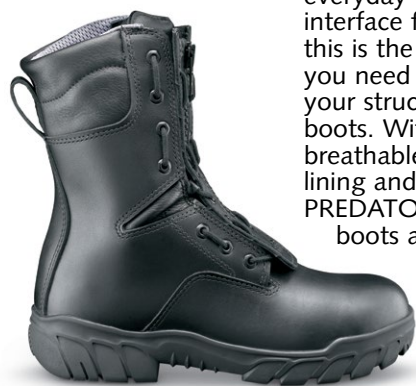
## EMS/WILDLAND 10"

(AVAILABLE WITH OPTIONAL VIBRAM® ARCTIC GRIP PRO)  
Built just like our TECHNICAL 10" with the GORE® CROSSTECH® bootie liner but with the more aggressive PREDATOR™ outsole and without the met-guard, these boots are ready for EMS runs and wildland response and all black for everyday station wear. Certified to NFPA 1999 (Emergency Medical), NFPA 1977 (Wildland), and NFPA 1992 (Liquid Splash).



## STATION/WILDLAND 10"

Worn by members of the U.S. military as their combination everyday boot and urban interface firefighting boot, this is the one pair of boots you need to complement your structural firefighting boots. With a cool and highly breathable AEROSPACER mesh lining and our light and flexible PREDATOR™ outsole, these boots are black with a plain toe for everyday station wear. Certified to NFPA 1977 (Wildland). Berry compliant.



### EXTENDED SIZE RANGE

**Men's:** Full Sizes 5-18 and Half Sizes 5½-15½ in Narrow, Medium, Wide, and X-Wide widths.

**Women's:** Full Sizes 5-12 and Half Sizes 5½-11½ in Narrow, Medium, Wide, and X-Wide widths.



### GORE® CROSSTECH® FOOTWEAR FABRIC (TECHNICAL 10" & EMS/WILDLAND 10" ONLY)

A full-height bootie liner made from a package of Omaha lining fabric, 300g insulation, and GORE® CROSSTECH® moisture barrier provides protection unmatched by any other waterproof, breathable barrier.



### FLAME-RESISTANT, WATER-RESISTANT HEAVY-DUTY LEATHER

Specially softened tumbled leather in high-flex areas to move with you.

### COMPOSITE HEEL COUNTER

Individually molded to fit each size perfectly.

### COMPOSITE SHANK

Lighter than steel, doesn't transmit heat or cold, springs back to shape better.

### COMPOSITE PUNCTURE PROTECTION

Far more flexible than a steel plate and doesn't transmit heat or cold. Exceeds NFPA standards.

### VIBRAM® CONTOURED CUP OUTSOLE

Molded outsole wraps onto the leather upper for athletic shoe performance. Flame-, abrasion-, oil-, acid-, and slip-resistant compound engineered for high traction and durability, even during prolonged exposure to extremes of heat and cold.



### SLIP-RESISTANT TREAD

Siping—thin slits cut into flat areas across the sole—opens up when flexed to provide additional traction on water and ice. Self-cleaning lugs and omnidirectional tread pattern designed for superior performance in all terrains and when working on ladders. Optional VIBRAM® ARCTIC GRIP PRO outsoles are available for even better slip resistance on wet ice (TECHNICAL 10" & EMS/WILDLAND 10" only).

### FACTORY REFURBISHING AVAILABLE

Call customer service for details: 1-800-232-8323

### QUICKZIP CLOSURE

The advantages of a lace-up for a custom fit and the convenience of a zipper.

### METATARSAL GUARD (TECHNICAL 10" ONLY)

Additional protection for the bones extending back from your toes over the instep is provided by a flexible, lightweight, molded PORON® XRD™ impact-resistant foam you'll hardly even feel.



### COMPOSITE SAFETY TOE CAP

Lighter than steel, doesn't transmit heat or cold, and exceeds NFPA standards for safety.

### VIBRAM® TOE BUMPER (TECHNICAL 10" & EMS/WILDLAND 10" ONLY)

Made from the same rugged compound as the outsole for abrasion resistance when crawling.

### DUAL-DENSITY ENHANCED 3D MOLDED FOOTBED SYSTEM

Removable dual-density footbeds are contoured to cradle and cushion the bottom of your feet and to provide arch support. Urethane foam bottom layer provides durable cushioning while a micro-cellular open-cell foam top layer delivers cool, all-day comfort. Moisture-wicking and anti-microbial fabric top pulls moisture away from your feet. An additional set of EVA inserts are provided to install under the footbeds when a snugger fit is desired.

### 3D COMPOSITE LASTING BOARD (TECHNICAL 10" & EMS/WILDLAND 10" ONLY)

Lasts to boot uppers with a built-in flex zone in the forefoot and a torsionally stable heel. Works together with the footbed to conform to your foot's shape.

### ATHLETIC FOOTWEAR CONSTRUCTION

Two-part cross-linking adhesive bonds outsoles to the upper. Without stiff welts and ribbed mid-soles, this attachment process is far more flexible.

