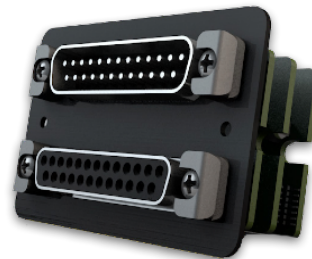


GRIDSMART CONNECTORS

TS1 MODULE

Part Number: GS2-TS1-OPT

The TS1 Module is the I/O Controller for the GS2 Processor. The module contains 24 optically isolated inputs and outputs rated for 24 VDC. The inputs are used to detect the phase state while the outputs are used as detector outputs. The TS1 Module is installed in the open bay on the front of GS2.



TS1 CABLE

Part Number: GS-3-TS1

The TS1 Cable set is used to connect the GS2 Processor TS1 Module with a TS1 Controller, or used to connect the GS2 to the Controller Breakout Panel when used with a type 170 or 2070 controller. The cable is 9 feet (2.74 m) long and provides TS1 cabinets with 24 active, low inputs and outputs.



TS2 MODULE

Part Number: GS2-TS2-OPT

The TS2 Module is the I/O Controller for the GS2 Processor. The module communicates to the traffic controller via the shared bus using the SDLC protocol. It can be configured for one (1) or up to as many as four (4) BIUs. The TS2 Module is installed in the open bay on the front of the GS2 Processor.



TS2 CABLE

Part Number: GS-3-TS2

The TS2 Cable is used to connect the GS2 Processor TS2 Module with a TS2 Controller. The shielded cable is six (6) feet (1.83 m) long and features 24 AWG datagrade wire, pre-terminated from one DB15 male and Y-splitting to one female DB15 and one male DB15, enclosed in an aluminum cage for added interference protection.



C12 CABLE

Part Number: GS-3-C12

The C12 Cable is required for the GS2 Processor to interface with a type 2070 controller. The cable is five (5) feet (1.52 m) long with a male DB25 connector on one end and a male DB15 connector on the other. The controller is able to send phase information and receive calls using an SDLC protocol.



ITS MODULE

Part Number: GS2-ITS-OPT

The ITS Module is the I/O Controller for the GS2 Processor. The module will communicate to the traffic controller via the shared bus utilizing the SDLC protocol. It can be configured for one (1) or up to as many as five (5) SIUs. The ITS Module is installed in the open bay on the front of GS2.



ITS CABLE

Part Number: GS-3-ITS

The ITS Cable is used to directly connect the GS2 ITS Module with an ITS Controller. Double-shielded LSZH cable design is five (5) feet (1.52 m) long and features 24 AWG datagrade wire, pre-terminated to DB25 male and female D-Sub connectors enclosed in an aluminum cage for added interference protection.



C1-Y CABLE

Part Number: GS-3-C1Y

The C1-Y Cable is used to connect the GS2 Processor TS2 Module to a TS1 Module and a 170/2070 traffic controller C1 port. This Y-cable has two six (6) feet (1.82 m) lengths with 104pos M/F connectors at the Y and a DB25M and DB25F on opposite ends. It replaces both the Controller Breakout Panel (GS-3-CBP) and TS1 Cable (GS-3-TS1).



CONTROLLER BREAKOUT PANEL

Part Number: GS-3-CBP

The Controller Breakout Panel requires a TS1 Cable (GS-3-TS1) and connects to a type 170 or 2070 Controller. It includes a three (3) feet (0.92 m) long cable with connectors that can connect into the C1 cable harness.

