



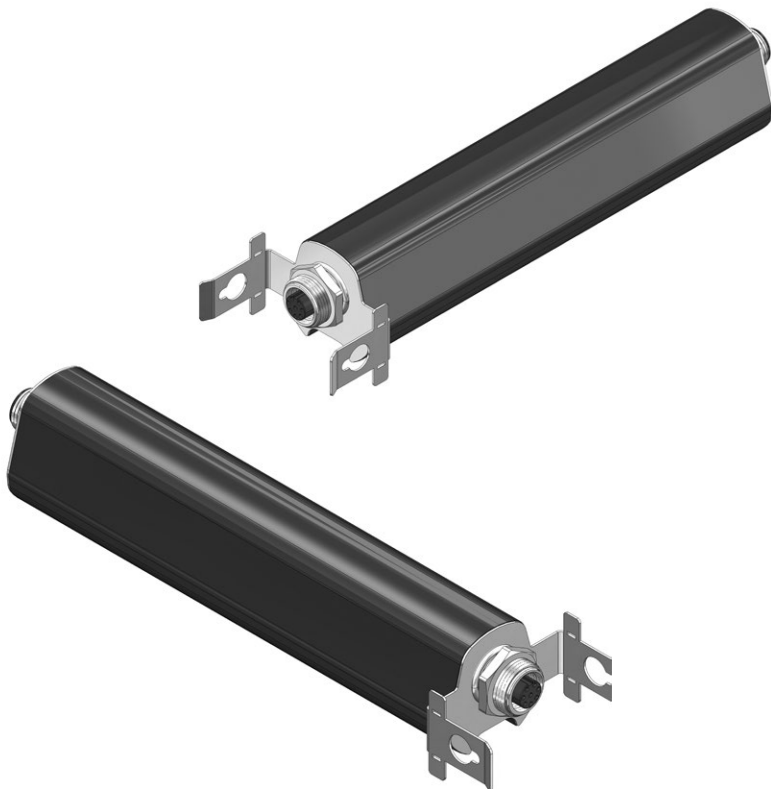
# JUNCTION BOX

**PART #: 10055286**

\*Only purchased separately for replacement

**The self-grounding Junction Box offers additional surge protection for the camera while providing a simple, easy to install, water-tight interconnection between the camera and the pulled CAT5e from the cabinet.**

The premeasured, shielded cable from the camera connects to the Junction Box using a threaded male M12 connector to the Junction Box. The pulled CAT5e from the cabinet connects through a threaded female M12 connector that is field terminated to the CAT5e.



## SPECIFICATIONS

**DESCRIPTION**

Junction Box V2

**CONNECTIVITY**

M12

**DIMENSIONS**

7.8" x 2.1" x 1.4" (19.8 x 5.3 x 3.5cm)

**WEIGHT**

0.55LB (0.25KG)

**MATERIAL**

Anodized Aluminum 6063 Housing

**ENVIRONMENT**

NEMA TS2; -29°F to 165°F (-34°C to 74°C)

**RATED**

IP67