



# seating inc.

## general services administration

Federal Supply Service/Authorized | Federal Supply Schedule Price List  
On-line access to contract ordering information, terms and conditions, up-to-date pricing, and the option to create an electronic delivery order are available through GSA Advantage!™, a menu driven database system. The INTERNET address for GSA Advantage!™ is: [www.gsaadvantage.gov](http://www.gsaadvantage.gov).

FSC Group 71, Part 1  
FSC Class 7110

Contract Number: 47QSCA19D000H

Contract Period: September 11, 2019 to September 10, 2024

For more information on ordering from Federal Supply Schedules click on the FSS Schedules button at: [www.gsaadvantage.gov](http://www.gsaadvantage.gov).

Contractor: Seating Inc.

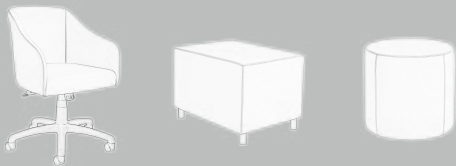
CAGE Code: 1NXE5

Manufacturing

PO Box 898, 60 N. State Street  
Nunda, New York, 14517

t 800.468.2475 | f 585.468.2804  
email: [sales@seatinginc.com](mailto:sales@seatinginc.com)  
[www.seatinginc.com](http://www.seatinginc.com)

Business Class: Economically Disadvantaged  
Woman Owned Small Business



**every seat has a story**

# GSA make space product line

October 2021

# GSA CUSTOMER INFORMATION

1a	Special Items Numbers	33721 - Office Furniture
1b	Lowest Priced Model	33721 - HM18R - \$541
2	Maximum Order Limitation	\$200,000
3	Minimum Order Limitation	\$100.00
4	Geographic Coverage	48 Contiguous States and District of Columbia
5	Production Points	Nunda, New York
6	Discount from List Price	Tiered Discount based on list prices and quantity (see item 7.)
7	Quantity Discounts	<div> <div>List Price:</div> <div>Discount Off List</div> </div> <div> <div>\$100 - \$100,000</div> <div>55%</div> </div> <div> <div>\$100,001 - \$200,000</div> <div>55.5%</div> </div>
8	Prompt Payment Terms	0.025% 15 Net 30 Days
9a	Government Credit Cards	Visa & Master Card AMEX & Discover Card Accepted
9b	Commercial Credit Cards	Visa & Master Card AMEX & Discover Card Accepted
10	Foreign Items	None
11a	Time of Delivery	20 to 30 days after receipt & entry of acceptable purchase order
11b	Expedited Delivery	Call for expedited delivery
11c	Overnight & 2-Day Delivery	The schedule customer may contact the Contractor for additional charges
11d	Urgent Requirements	The schedule customer may contact the Contractor's representative to effect a faster delivery
12	F.O.B. Point	Destination within the contiguous 48 States and District of Columbia
13	Ordering Address	Seating Inc. PO Box 898, 60 North State Street, Nunda, New York 14517 T (585) 468.2875 F (585) 468.2804
14	Payment Address	Seating Inc. PO Box 898, 60 North State Street, Nunda, New York 14517 T (800) 468.2475 F (585) 468.2804 Tax ID# 16-1344044   Cage #INXE5
15	Warranty Provision	Refer to page 11-12 for complete warranty information
16	Export Packing Charges	Call or write for quotation
17	Terms & Conditions of Government Purchase Card	Accept orders up to card limitation
18	Terms & Conditions of Rental & Repair	Not applicable
19	Terms & Conditions of Installation	Not applicable
20	Terms & Conditions of Repair Parts	Call for cost if items are not under warranty
20a	Terms & Conditions of Other Services	No material can be returned without written authorization. When a returned item has been return authorized by Seating Inc., it is the responsibility of the customer to pay the shipping charges
21	Service and Distribution Points	Seating Inc. PO Box 898, 60 North State Street, Nunda, New York 14517 T (800) 468.2475 F (585) 468.2804
22	Participating Dealers	Please contact Seating Inc. for participating dealers
23	Preventative Maintenance	Not applicable
24	Environmental Attributes	BIFMA level®
25	Duns #	#602414302
26	SAM Registration	Registered

# COMMERCIAL TERMS & CONDITIONS

---

## DISCLAIMER

The Terms & Conditions below expressly set forth Seating Inc.'s position and is not intended to be a full, comprehensive, and complete detail of each subject. Seating Inc. reserves the right to alter, change, modify, expand, or discontinue any of the policies set forth below. Seating Inc. further reserves the right to alter, change, modify, or discontinue its programs, policies, or relationship with any customer who violates Seating Inc.'s stated Terms & Conditions.

## PRICES

All prices shown within this Price Book are Suggested List Price only and are subject to change without notice. All merchandise will be invoiced at prices prevailing at time of order placement.

## ORDERS

All orders must be submitted in writing via US Mail, Fax Transmission, or Email. It is the Buyer's sole responsibility to check orders and their corresponding acknowledgements for accuracy.

## MINIMUM ORDER SIZE

No minimum order required

## ACKNOWLEDGEMENTS

Every order is acknowledged by fax within 72 hours of receipt and credit approval of an order. If you do not receive an order acknowledgement within 72 hours, please contact customer service at 800.468.2475. An acknowledgement will confirm quantities, items ordered and prices effective at the time of order acceptance. Orders will be manufactured and invoiced based upon the information on the acknowledgement. If there is any discrepancy, please notify Seating Inc. immediately, in writing.

## LEAD TIMES

Lead times are based on receipt of a complete and correct order that has been approved for credit. If an order is subject to a credit hold, it will be scheduled for shipment only after it is released from credit hold. All order acknowledgements contain an estimated shipping date, which is subject to change.

## REVISED ORDERS

Orders requiring changes to the product or additional options will not incur additional costs unless orders have been processed. Seating Inc. reserves the right to apply additional charges to the invoice for orders revised after manufacturing has begun. All changes must be in writing.

## TERMS

All merchandise will be invoiced when shipped, upon credit approval, with standard terms standard terms of net 30. Credit Card accepted within 10 days of shipments. The Buyer agrees that Seating Inc. shall have the right to assess interest charges of 1.5% per month on invoices not paid and received by Seating Inc. within terms. The Buyer further agrees that Seating Inc. has the right to change terms, suspend shipments, or refuse orders from any delinquent account.

## SECURITY

The Buyer agrees that Seating Inc. maintains a security interest and title, to all merchandise sold by it to the Buyer until all monies have been paid to Seating Inc. for said merchandise.

## CANCELLATION

All orders are considered firm and are not subject to cancellation by the Buyer without written approval from Seating Inc. Management. Any cancellation requests from the Buyer must be submitted in writing within two days of receipt of purchase order to be considered for approval. Seating Inc. reserves the right to assess a Cancellation Fee of 30%, or as negotiated, for any order cancelled by the Buyer.

## SHIPMENTS

All shipments shall be made via Seating Inc.'s choice of carrier. The Buyer may specify a servicing carrier when requesting 3rd party billing. Seating Inc.'s liability ends once the Buyer signs the Bill of Lading, or otherwise receives the shipment, thus acknowledging that the merchandise was received in satisfactory condition. It is the Buyer's sole responsibility to assume liability, risk, damage, or loss during 3rd party shipment or transshipment. Further, it is the Buyer's responsibility to report damage or loss of any shipment with the appropriate carrier.

## SHIP DATES AND DELAYS

If Seating Inc. cannot ship products as scheduled due to causes beyond their reasonable control, (such as casualty, acts of nature, labor disputes, or accident; inability to obtain necessary material or transportation; or changes requested by the customer) the ship date will be extended to compensate for the delay as determined by Seating Inc.

## REDELIVERY OF FREIGHT

When redelivery of merchandise is required because the customer is not ready to accept the merchandise, and no notification of this fact is given to the factory at least two weeks prior to the scheduled ship date, the actual costs for freight, restocking and rehandling will be billed to the customer.

## RETURNS

Seating Inc. products are made-to-order and may not be returned without written approval from Seating Inc. Management. Seating Inc. reserves the right to refuse return of merchandise. All approved returns must be returned prepaid by the Buyer and are subject to a Restocking Charge of no greater than 30%. Merchandise must be returned unused, in original shipping carton with proper inner packaging.

## CHANGES

Seating Inc. reserves the right to institute changes to material, parts, or design as well as to discontinue models, options, and/or parts without any prior notice.

## DESIGN

In keeping with modern manufacturing advances, Seating Inc. reserves the right to make changes in product offering, design and materials as well as the discontinuance of parts and units when such action is deemed to be an improvement in design or function.

## SPECIAL PRODUCTS

Modifications to standard products will be considered for large quantity orders. SC - Semi Custom. Contact the factory for price quotations.

## TEXTILES DISCLAIMER

Seating Inc. will not be held responsible, or liable in any way, for any color variances between rolls of material due to dye lots within a shipment.

## INQUIRIES

All inquiries and correspondence should be directed to:

SEATING INC.  
PO Box 898  
Nunda, NY 14517  
Phone: 800.468.2475  
Fax: 585.468.2804  
sales@seatinginc.com

# TABLE OF CONTENTS

## IMPORTANT INFORMATION

## PAGE

WARRANTY INFORMATION	1
COM AND UPHOLSTERY COMBINATIONS (UC)	2
SHIPPING PROGRAM	3
PACKAGING AND FREIGHT CLAIMS	4

## MAKE SPACE COLLECTION

### DOCK

Dock Bench	5-6
Dock Square	7-8

### HOVER

Portable Pod - Square	9-10
Portable Pod - Round	9-10
Portable Table - Square	11-12
Portable Table - Round	11-12

### KUDL

Swivel - Full and Open Back	13-14
4-Leg Wood - Full and Open Back, Standard and Counter Height	15-16

### TABLES

Round	17-18
Square	19-20
Coffee	21-22



STATEMENT OF LINE	23-24
-------------------	-------

As the importance of a healthy workplace and a clean global environment has grown, so has our commitment to manufacturing “green” office seating products.

# MAKE SPACE COLLECTION WARRANTY INFORMATION

Seating Inc. warrants to the original end user that this product will be free from defects in its material and workmanship, subject to limitations as expressed below. The company will repair or replace, at its option without charge to the original purchaser only, defective products or parts during the following warranty periods.

This warranty shall be effective for the applicable time period beginning from date of purchase as shown on your original receipt or other proof of purchase. This warranty is your sole remedy for product defects and excludes defects due to or arising in connection with products abuse or misuse, user modifications of, or attachments to the product, including application of your own upholstery materials and products or parts not used, maintained, or installed in accordance with the company's installation, maintenance, and/or applicable guidelines.

Coverage period:		STANDARD CARDED TEXTILES	
	Lifetime: Go2 & Kudl User weight not to exceed 300lbs	Coverage period:	3 years from date of purchase
	Lifetime: Make Space Tables	Limitations:	Normal use as determined by textile manufacturer's guidelines
	Lifetime: Dock & Hover User weight not to exceed 400lbs per 24" of seat.	10-YEAR TEXTILES (Including Cordura® Nylon)	
	Power Port: Dock 3 years from date of purchase	Coverage period:	10 years from date of purchase
		Limitations:	Normal use as determined by textile manufacturer's guidelines

## WARRANTY SERVICE

We work hard every day to make sure that our products reach your workplace in perfect operating condition. We also know that the minute you take delivery, you are responsible for keeping them that way. That's why every chair we make carries the information you need to give us when service is required. If this product fails during normal use, as set forth in the limitations above, within the applicable coverage period, follow these simple steps:

### STEP 1

Locate the Seating Inc. product tag under the seat of your Seating Inc. chair.

### STEP 2

Go to [www.seatinginc.com](http://www.seatinginc.com). Go to Resources and Service Request. Click on the "Service Request" button to access our interactive Service Request Form.

Service Request



### STEP 3

Give us the info printed on the tag and tell us how we can help ... it's that easy!

We can also advise you of the procedure to follow when making warranty claims. Call Seating Inc. at 800.468.2475, or Email [production@seatinginc.com](mailto:production@seatinginc.com) to explain the defect. Give your name, address, and phone number. Please be prepared with the model number, date of purchase and date of manufacture, found under the seat.

We will repair, or at our option, replace, the defective part, free of charge to the purchaser, provided only that the purchaser returns said part to Seating Inc., freight or other shipping charges prepaid. Do not return any parts or product without prior written authorization from Seating Inc. The company reserves the right to inspect any part or product to determine the nature of the defect and it is the purchaser's responsibility to return the part or product to the manufacturer at his/her expense for warranty determination.

There are no other warranties, expressed or implied other than those specifically described, including without limitation any implied warranty or merchantability or of fitness for a particular purpose. We will not be responsible for incidental or consequential damages, and/or off-site labor charges.

# MAKE SPACE COLLECTION COM AND UC PROCEDURE

## CUSTOMER'S OWN MATERIAL (COM)

In order to do our best to ensure that Make Space products upholstered in COM textiles meet your expectations for appearance and durability, we require that all COM fabric, vinyl and leather is reviewed for performance and quality.

### Approval Procedure:

Contact your fabric representative to confirm fabric width, pattern repeat and direction. Include relevant information along with your sample, bearing in mind that fabric limitations such as roll width and "stretch" may impact options.

Send a minimum 6"x6" sample of the COM textile to Seating Inc. along with product style number and order quantity, and your contact information.

Seating Inc. will test for suitability and notify you of approval and specific yardage requirements.

### IMPORTANT:

- 1) Seating Inc. will not be held responsible for any COM textile wear, defects or appropriateness.
- 2) Seating Inc. reserves the right to refuse any COM material it deems inappropriate for any reason.
- 3) The buyer assumes responsibility for all costs associated with approval, shipping, receiving, storage and other charges related to a COM order.

### Ordering (for approved COM textiles)

Yardage in the price book is based on 54" non-patterned material. COM requirements may increase or decrease depending on the width of the roll, pattern repeat and direction, and the quantity of products to be manufactured. Please call the factory for final confirmation of yardage before placing your COM fabric order.

Apply Grade One pricing when you prepare a purchase order for COM.

Order COM textile from appropriate mill or jobber making sure that orders are tagged with the purchase order # that matches the order to Seating Inc.

Ship to:

Seating Inc.

60 North State St.

Nunda, NY 14517

800-468-2475.

Production lead times will be confirmed after COM textiles are received by the factory.

### IMPORTANT:

- 1) If you wish to have any unused material returned to you, indicate this on the purchase order.
- 2) You must understand and acknowledge that you, the buyer, are responsible for all handling, packaging and shipping costs to return the materials.

## UPHOLSTERY COMBINATION (UC)

A minimum of \$47 will be charged for UC. Due to variations in models and sizes, yield and/or pattern matching, additional costs may apply. Call Seating Inc. to confirm these costs.

When combining carded or graded in textiles of different grade levels, products will be priced at the higher grade level.

Indicate the pattern direction when specifying upholstery combinations in non-solid textiles, bearing in mind that fabric limitations such as roll width and "stretch" may impact options.

Refer to information above for COM.

# MAKE SPACE COLLECTION SHIPPING PROGRAM

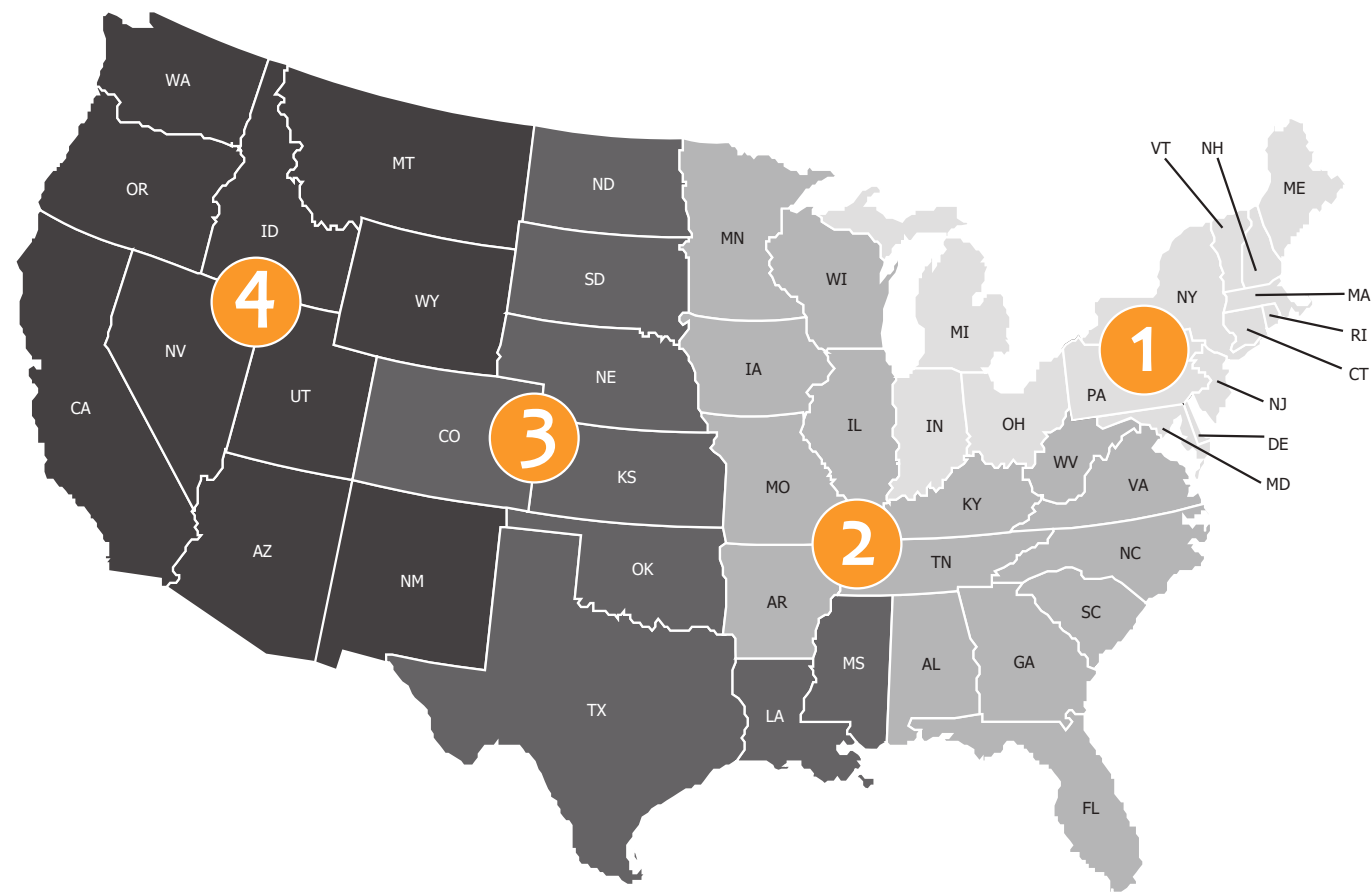
The list prices shown in this price book are shipped free of charge when the appropriate qualifications are met as outlined below. Only shipments to loading docks or approved drop off locations are eligible for the free shipping program. Special shipping circumstances will carry additional charges. These include, but are not limited to, **inside delivery, residential delivery, request for delivery appointment, overnight, 2-day and 3-day deliveries, and incorrect shipping address.** Seating Inc. reserves the right to ship via its carrier of choice and to modify its Free Shipping Program for specific accounts for any reason (i.e. credit delinquency, undeliverable address for Seating Inc.'s choice of carrier, discount programs, etc...) The zone used to determine the free shipping qualifications is based upon the ship-to destination, not upon the originating location of the order. Orders shipped to multiple locations may not be combined to qualify for free shipping.

## QUALIFICATIONS FOR FREE SHIPPING

Look in the appropriate Zone table for the qualifications for free freight on your order. If you meet, or exceed the minimum qualified number of chairs as stated below, then your order will be shipped freight free.

## ADDITIONAL CHARGES

Additional services will incur additional charges - these include, but are not limited to: driver assist, stop offs, truck ordered but not used (cancelling or changing shipment), reconsignment, driver layover, weekend deliveries, disposal of dunnage such as cardboard. Please contact Seating Inc. for an quote if you require these services.



### ZONE 1

- All orders of 11 items or more are shipped freight free.
- **UPS:** A \$15.00 per item charge for orders of 10 items or less will be added to the invoice.
- **LTL:** A \$55 per item charge for orders of 10 items or less will be added to the invoice.

Connecticut  
Delaware  
Indiana  
Maine  
Maryland  
Massachusetts  
Michigan  
New Hampshire  
New Jersey  
New York  
Ohio  
Pennsylvania  
Rhode Island  
Vermont  
Washington, DC

### ZONE 2

- All orders of 16 items or more are shipped freight free.
- **UPS:** A \$20 per item charge for orders of 15 items or less will be added to the invoice.
- **LTL:** A \$65 per item charge for orders of 15 items or less will be added to the invoice.

Alabama  
Arkansas  
Florida  
Georgia  
Illinois  
Iowa  
Kentucky  
Minnesota  
Missouri  
North Carolina  
South Carolina  
Tennessee  
Virginia  
West Virginia  
Wisconsin

### ZONE 3

- All orders of 21 items or more are shipped freight free.
- **UPS:** A \$25 per item charge for orders of 20 items or less will be added to the invoice.
- **LTL:** A \$75 per item charge for orders of 20 items or less will be added to the invoice.

Colorado  
Kansas  
Louisiana  
Mississippi  
Nebraska  
North Dakota  
Oklahoma  
South Dakota  
Texas

### ZONE 4

- All orders of 50 items or more are shipped freight free.
- **UPS:** A \$35 per item charge for orders of 50 items or less will be added to the invoice.
- **LTL:** A \$90 per item charge for orders of 50 items or less will be added to the invoice.

Arizona  
California  
Idaho  
Nevada  
New Mexico  
Montana  
Oregon  
Utah  
Washington  
Wyoming



# MAKE SPACE COLLECTION PACKAGING & FREIGHT CLAIMS

Every consideration is given to ensuring that our products are received by you, or your customer, in the same condition as when it leaves our factory. We know your order is not complete until this is accomplished. All of our products are either shipped via UPS/FedEx, common carrier, or private carrier. This is determined by the number of cartons required for shipping your order, and the destination location.

## PRIVATE CARRIER AND COMMON CARRIER

Only orders that are big enough to fill at least a truckload are considered for private carrier shipments.

For large quantity orders, we are happy to deliver cardboard wrapped, sometimes referred to as blanket wrapped, fully assembled orders. This is the most convenient way to receive chairs. Simply roll the chairs off the truck into your customer's space. Cardboard wrapping may not be suitable for all chair types and textiles. Call us directly to set up this service. Note: Customer is responsible for disposing of the cardboard.

## LTL

Products packaged for LTL shipments may use combinations of private & UPS/FedEx packaging as we see fit.

Orders that do not fill at least a truckload will be subject to shipment by LTL.

Make Space products that will be shipped using LTL are noted on each product page within this price book.

## UPS/FEDEX

Make Space products that can be shipped using UPS/FedEx are noted on each product page within this price book.

## PACKAGING

We have worked diligently with carriers to ensure that our cartons, packaging, labeling, etc., not only meet their restrictions for size and weight, but more importantly, will arrive at its destination with the least likelihood of any damage.

All cartons have:

- 350lb double wall construction
- Cardboard "cross-inserts" to prevent side impact shock to the chair
- Access holes for easy lifting
- Stapled seam for extra strength
- Foam padding to prevent impact shock to the chair

## FREIGHT CLAIMS

Even though we take every precaution to ensure your order arrives with no damage, we cannot control events that may take place in transit. It is the responsibility of the party receiving the shipment to inspect it for signs of damage before signing the bill of lading. Signing the bill of lading releases the carrier and Seating Inc. from any responsibility for damages occurring during transit.

Caution: after obtaining a clear receipt for shipment, the delivering carrier is no longer responsible for damages or shortages.

It is your responsibility to report any shortages or outward damages on the bill of lading. You protect yourself by refusing shipments showing damage or shortage until transportation carrier has noted on the delivery sheet the extent of damage or shortage.

In the event of "hidden damage" it is the responsibility of the party receiving the shipment to contact Seating Inc. immediately.

Damage to contents must be reported within 2 days from the date of delivery. If at all possible, please take pictures of the damage.

All merchandise should be retained in the original shipping container, in the same condition it was in when loss or damage was discovered.

If you experience concealed damage:

1. Call Seating Inc. to report the damage immediately.  
Then write an affidavit giving date damaged product was received and the damage incurred. If possible, take pictures of the damage.
2. Retain all merchandise in the original container.
3. Contact Seating Inc.'s shipping department (800.468.2475, [production@seatinginc.com](mailto:production@seatinginc.com)) to advise them of the damage situation and be prepared to provide detailed order and product information.
4. Send a copy of your affidavit to Seating Inc. and any pictures, if available. It will be the responsibility of Seating Inc. to file a cargo claim within prescribed time limits and to respond to any requests from the carrier for supporting documentation. The damaged product must be retained until the claim is resolved, or until the claimant is given disposition by the carrier.



# dock BENCH

- Stand alone or connected by easy to use, hidden ganging clamps, Dock's versatile seating units create unique collaborative spaces.
- 24" • 48" • 60" • 72" lengths. Custom sizes available.
- 18" Bench Height or 15" Mini (for child-centered spaces)
- 400lb weight capacity per 24" length.
- Comfortable high-density foam with upholstered seat top and foam wrapped sides.
- Built to last: reinforced seat top with durable wood frame and inner supports that won't break down or sag over time.
- Customize your Dock: consider square or round legs with black, chrom or silver metallic finish. Add an upholstery combination – the options a endless to create your unique Dock!
- Add matching support arm with swing away, high pressure laminate, 18" round table top to add functional work surface on either or both sides.
- Plug in and connect! Up to 3 Optional power ports may be added to any dock, each with 2 USB plugs and 1 standard electrical outlet that can be all placed on one single power cable.



model #  
DB4818 LSC UC

## pricing

### Dock Bench 18" Height

Model #	Description	Gr 1	Gr 2	Gr 3	Gr 4	Gr 5	Gr 6	Gr 7	Gr 8	Gr 9	Gr 10
DB2418	24x18x18	811	843	875	886	906	926	936	946	956	968
DB4818	48x18x18	1028	1078	1129	1146	1179	1211	1227	1244	1259	1278
DB6018	60x18x18	1352	1416	1480	1501	1541	1582	1601	1622	1642	1666
DB7218	72x18x18	1568	1639	1708	1732	1777	1821	1842	1866	1886	1913
DBCUST	Custom Size	Call For Pricing									

### Dock Mini Bench 15" Height

Model #	Description	Gr 1	Gr 2	Gr 3	Gr 4	Gr 5	Gr 6	Gr 7	Gr 8	Gr 9	Gr 10
DM2418	24x18x15	790	821	853	864	885	904	914	925	935	946
DM4818	48x18x15	1006	1057	1108	1125	1157	1190	1205	1222	1237	1257
DM6018	60x18x15	1330	1394	1458	1480	1520	1561	1579	1601	1620	1644
DM7218	72x18x15	1547	1617	1686	1710	1755	1800	1820	1844	1865	1892
DMCUST	Custom Size	Call For Pricing									

## com yardage

Model #	COM Yardage
Dock Bench	
DB2418	1.50
DB4818	2.25
DB6018	2.50
DB7218	2.75

Model #	COM Yardage
Dock Mini Bench	
DM2418	1.50
DM4818	2.25
DM6018	2.50
DM7218	2.75

Please refer to page 2 to review COM procedures before submitting your order.

## freight

Model #	UPS/LTL
Dock Bench	
DB2418	UPS
DB4818	LTL
DB6018	LTL
DB7218	LTL
Dock Mini Bench	
DM2418	UPS
DM4818	UPS
DM6018	LTL
DM7218	LTL

# dock BENCH

When ordering you must specify:

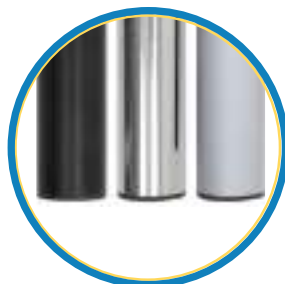
- 1) Complete model #
- 2) Leg shape and finish
- 3) Upholstery and color choice name

Then you may add additional option codes

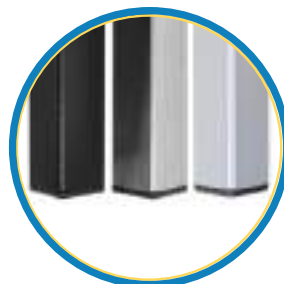
Please note:

- When ordering a swing away table top with support arm, a table top finish must also be specified to complete the order.

- Each Dock is custom made by craftsman who can place your power port in any area. Standard left right and center placement will be in the middle of those locations. If you would like to specify exactly where the port(s) is/are placed, please add a comment to the order.



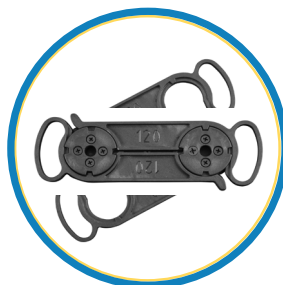
Round Leg



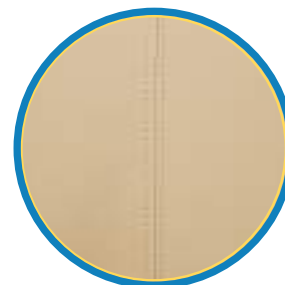
Square Leg



Power Port



Ganging Connector



Stitching

## options & upgrades

Code	Description	List Price
<b>LEGS - Set of 4</b>		
LRB	Round Leg BLACK finish.	N/C
LRC	Round Leg CHROME finish.	\$27
LRSM	Round Leg SILVER METALLIC finish.	N/C
LSB	Square Leg BLACK finish.	N/C
LSC	Square Leg CHROME finish.	\$27
LSSM	Square Leg SILVER METALLIC finish.	N/C
<b>SWING AWAY TABLE TOP WITH SUPPORT ARM (Please specify Table Top Finish)</b>		
TRB	Swing away table top, RIGHT hand install, with BLACK finish support arm.	\$460
TRC	Swing away table top, RIGHT hand install, with CHROME finish support arm.	\$487
TRSM	Swing away table top, RIGHT hand install, with SILVER METALLIC finish support arm.	\$460
TLB	Swing away table top, LEFT hand install, with BLACK finish support arm.	\$460
TLC	Swing away table top, LEFT hand install, with CHROME finish support arm.	\$487
TLSM	Swing away table top, LEFT hand install, with SILVER METALLIC finish support arm.	\$460
<b>SWING AWAY TABLE TOP FINISH</b>		
Standard Choices with matching edge: White Driftwood, Carter Oak, Designer White, Kensington Maple, Fonthill Pear, Wild Cherry, Montana Walnut, Empire Mahogany, Cafelle, or Black.		N/C
SL	Wilsonart® laminate finishes ending with code 60 are available standard choices.	N/C
UL	Upgrade laminate choices, call for pricing.	CFP
<b>GLIDES</b>		
AHG	Adjustable height glides.	\$43
AHGV	Adjustable height VCT Floor saver glides. Prevents damage to VCT tile. Not for use on carpet.	\$65
<b>POWER PORT</b> (each power port consists of 2 USB ports and 1 standard electric outlet. (1) 72" power cable will also be provided per dock)		
PPR	Power Port, RIGHT side install.	\$233
PPL	Power Port, LEFT side install.	\$233
PPC	Power Port, CENTER front install.	\$233
<b>SPECIALTY</b>		
DGC	Dock ganging connector. All Dock products are pre-prepped to receive connecting bracket.	\$54
UC	Upholstery combination. See Page 2 for further instructions.	\$47
CAL	Flame Guard – Chair made to conform to CAL 133 spec.	\$62 per yard used

make space collection - dock bench



# dock SQUARE

- Stand alone or connected by easy to use, hidden ganging clamps, Dock's versatile seating units create unique collaborative spaces.
- Dock Table Squares are found on page 11. These tables have a laminate top.
- 18"x18" • 24"x24" • 30"x30" square sizes. Custom sizes available.
- 18" Height or 15" Mini (for child-centered spaces)
- 400lb weight capacity. 30" Square is 800lb weight capacity.
- Comfortable high-density foam with upholstered seat top and foam wrapped sides.
- Built to last: reinforced seat top with durable wood frame and inner supports that won't break down or sag over time.
- Customize your Dock: consider square or round legs with black, chrome, or silver metallic finish. Add an upholstery combination – the options are endless to create your unique Dock!
- Add matching support arm with swing away, high pressure laminate, 18" round table top to add functional work surface on either or both sides.
- Plug in and connect! Up to 3 Optional power ports may be added to any dock, each with 2 USB plugs and 1 standard electrical outlet that can be all placed on one single power cable.



model #  
DB1818 LRC PPR

## pricing

### Dock Square 18" Height

Model #	Description	Gr 1	Gr 2	Gr 3	Gr 4	Gr 5	Gr 6	Gr 7	Gr 8	Gr 9	Gr 10
DB1818	18x18x18	573	618	662	677	706	734	747	763	776	793
DB2424	24x24x18	633	684	734	752	784	817	832	849	864	884
DB3030	30x30x18	876	958	1042	1070	1123	1175	1199	1228	1252	1284
DBCUST	Custom Size	Call For Pricing									

### Dock Mini Square 15" Height

Model #	Description	Gr 1	Gr 2	Gr 3	Gr 4	Gr 5	Gr 6	Gr 7	Gr 8	Gr 9	Gr 10
DM1818	18x18x15	552	596	640	655	685	713	726	741	754	771
DM2424	24x24x15	611	662	713	730	763	795	810	827	843	862
DM3030	30x30x15	854	937	1020	1048	1101	1153	1178	1206	1231	1262
DMCUST	Custom Size	Call For Pricing									

## com yardage

Model #	COM Yardage	Model #	COM Yardage
Dock Bench		Dock Mini Bench	
DB1818	2.00	DM1818	2.00
DB2424	2.25	DM2424	2.25
DB3030	3.50	DM3030	3.50

Please refer to page 2 to review COM procedures before submitting your order

## freight

Model #	UPS/LTL
Dock Bench	
DB1818	UPS
DB2424	UPS
DB3030	LTL
Dock Mini Bench	
DM1818	UPS
DM2424	UPS
DM3030	LTL



# dock SQUARE

When ordering you must specify:

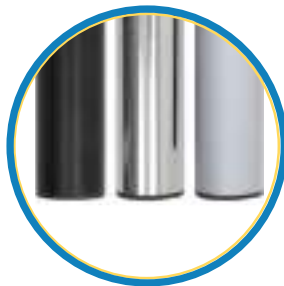
- 1) Complete model #
- 2) Leg shape and finish
- 3) Upholstery and color choice name

Then you may add additional option codes.

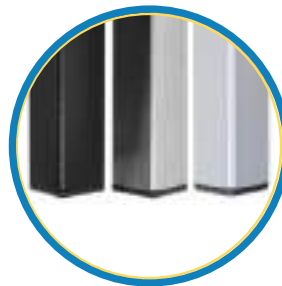
Please note:

- When ordering a swing away table top with support arm, a table top finish must also be specified to complete the order.

- Each Dock is custom made by craftsman who can place your power port in any area. Standard left right and center placement will be in the middle of those locations. If you would like to specify exactly where the port(s) is/are placed, please add a comment to the order.



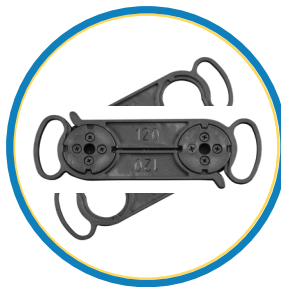
Round Leg



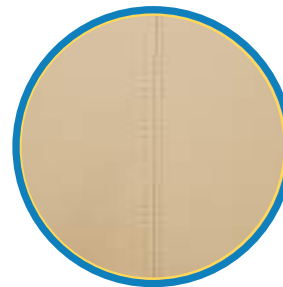
Square Leg



Power Port



Ganging Connector



Stitching

## options & upgrades

Code	Description	List Price
<b><u>LEGS - Set of 4</u></b>		
LRB	Round Leg BLACK finish.	N/C
LRC	Round Leg CHROME finish.	\$27
LRSM	Round Leg SILVER METALLIC finish.	N/C
LSB	Square Leg BLACK finish.	N/C
LSC	Square Leg CHROME finish.	\$27
LSSM	Square Leg SILVER METALLIC finish.	N/C
<b><u>SWING AWAY TABLE TOP WITH SUPPORT ARM (Please specify Table Top Finish)</u></b>		
TRB	Swing away table top, RIGHT hand install, with BLACK finish support arm.	\$460
TRC	Swing away table top, RIGHT hand install, with CHROME finish support arm.	\$487
TRSM	Swing away table top, RIGHT hand install, with SILVER METALLIC finish support arm.	\$460
TLB	Swing away table top, LEFT hand install, with BLACK finish support arm.	\$460
TLC	Swing away table top, LEFT hand install, with CHROME finish support arm.	\$487
TLSM	Swing away table top, LEFT hand install, with SILVER METALLIC finish support arm.	\$460
<b><u>SWING AWAY TABLE TOP FINISH</u></b>		
Standard Choices with matching edge: White Driftwood, Carter Oak, Designer White, Kensington Maple, Fonthill Pear, Wild Cherry, Montana Walnut, Empire Mahogany, Cafelle, or Black.		N/C
SL	Wilsonart® laminate finishes ending with code 60 are available standard choices.	N/C
UL	Upgrade laminate choices, call for pricing.	CFP
<b><u>GLIDES</u></b>		
AHG	Adjustable height glides.	\$43
AHGV	Adjustable height VCT Floor saver glides. Prevents damage to VCT tile. Not for use on carpet.	\$65
<b><u>POWER PORT</u></b> (each power port consists of 2 USB ports and 1 standard electric outlet. (1) 72" power cable will also be provided per dock)		
PPR	Power Port, RIGHT side install.	\$233
PPL	Power Port, LEFT side install.	\$233
PPC	Power Port, CENTER front install.	\$233
<b><u>SPECIALTY</u></b>		
DGC	Dock ganging connector. All Dock products are pre-prepped to receive connecting bracket.	\$54
UC	Upholstery combination. See Page 2 for further instructions.	\$47
CAL	Flame Guard – Chair made to conform to CAL 133 spec.	\$62 per yard used

make space collection - dock square



# hover PORTABLE POD

- Adaptable seating units with concealed casters are versatile, portable and durable.
- 18" Height or 15" Mini (for child-centered spaces)
- 18" • 24" • 30" Square or Round size options accommodate people of different sizes or allow seating for more than one person. Custom sizes available.
- 400lb weight capacity. 30" has 800lb weight capacity.
- Built to last: reinforced seat top with durable wood frame and inner supports that won't break down or sag over time.
- Comfortable high-density foam with upholstered seat top and foam wrapped sides.
- Optional glides and upholstery combinations available.



model #  
HP30R

## pricing

### Hover Round 18" Height

Model #	Description	Gr 1	Gr 2	Gr 3	Gr 4	Gr 5	Gr 6	Gr 7	Gr 8	Gr 9	Gr 10
HP18R	18 Round, 18" Height	562	594	626	637	658	677	687	698	707	719
HP24R	24 Round, 18" Height	622	673	724	741	773	806	821	838	853	873
HP30R	30 Round, 18" Height	865	947	1031	1059	1112	1164	1189	1217	1242	1273
HPCUST	Custom Size	Call For Pricing									

### Hover Square 18" Height

Model #	Description	Gr 1	Gr 2	Gr 3	Gr 4	Gr 5	Gr 6	Gr 7	Gr 8	Gr 9	Gr 10
HP18S	18 Square, 18" Height	573	618	662	677	706	734	747	763	776	793
HP24S	24 Square, 18" Height	633	684	734	752	784	817	832	849	864	884
HP30S	30 Square, 18" Height	876	958	1042	1070	1123	1175	1199	1228	1252	1284
HPCUST	Custom Size	Call For Pricing									

### Hover Mini Round 15" Height

Model #	Description	Gr 1	Gr 2	Gr 3	Gr 4	Gr 5	Gr 6	Gr 7	Gr 8	Gr 9	Gr 10
HM18R	18 Round, 15" Height	541	572	605	615	636	655	665	676	686	698
HM24R	24 Round, 15" Height	600	651	702	719	752	784	799	817	832	851
HM30R	30 Round, 15" Height	844	926	1009	1037	1090	1142	1167	1195	1220	1251
HMCUST	Custom Size	Call For Pricing									

### Hover Mini Square 15" Height

Model #	Description	Gr 1	Gr 2	Gr 3	Gr 4	Gr 5	Gr 6	Gr 7	Gr 8	Gr 9	Gr 10
HM18S	18 Square, 15" Height	552	596	640	655	685	713	726	741	754	771
HM24S	24 Square, 15" Height	611	662	713	730	763	795	810	827	843	862
HM30S	30 Square, 15" Height	854	937	1020	1048	1101	1153	1178	1206	1231	1262
HMCUST	Custom Size	Call For Pricing									



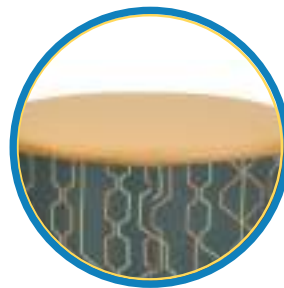
When ordering you must specify:

- 1) Complete model #
- 2) Upholstery and color choice name

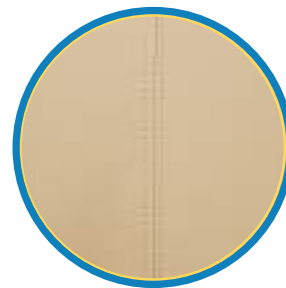
Then you may add additional option codes



Concealed Carpet Casters



Upholstery Combination



Stitching

## options & upgrades

Code	Description	List Price
<b><u>GLIDES/CASTERS</u></b>		
HGLD	3/4" Nylon Nail-in Glides.	N/C
<b><u>SPECIALTY</u></b>		
UC	Upholstery combination. See Page 2 for further instructions.	\$47
CAL	Flame Guard – Chair made to conform to CAL 133 spec.	\$62 per yard used

## com yardage

Model #	COM Yardage
Hover Round	
HP18R	1.25
HP24R	2.25
HP30R	2.50
Hover Square	
HP18S	2.00
HP24S	2.25
HP30S	3.50
Hover Mini Round	
HM18R	1.25
HM24R	2.25
HM30R	2.50
Hover Mini Square	
HM18S	2.00
HM24S	2.25
HM30S	3.50

## freight

Model #	UPS/LTL
Hover Round	
HP18R	UPS
HP24R	UPS
HP30R	LTL
Hover Square	
HP18S	UPS
HP24S	UPS
HP30S	LTL
Hover Mini Round	
HM18R	UPS
HM24R	UPS
HM30R	LTL
Hover Mini Square	
HM18S	UPS
HM24S	UPS
HM30S	LTL

\*Please refer to page 2 to review COM procedures before submitting your order





- Adaptable table units with laminate tops and concealed casters are versatile, portable and durable.
- 18" or 21" Height
- 18" • 24" • 30" Square or Round size options.
- Built to last: reinforced inner wood frame and inner wood supports that won't break down or sag over time
- Foam wrapped sides.
- 3/4" Thick high density laminate top.
- 2" tall metal table supports in black, chrome, or silver metallic finish.
- Update your table with standard or custom Wilsonart® laminate finishes.
- Optional glides available.
- CAUTION! do not sit or stand on tables.



model #  
HT24R-18 TSC

## pricing

### Hover Table Round 21" Height

	Model #	Description	Gr 1	Gr 2	Gr 3	Gr 4	Gr 5	Gr 6	Gr 7	Gr 8	Gr 9	Gr 10
	HT18R-21	18 Round, 21" Height	919	951	983	994	1015	1034	1044	1055	1065	1076
	HT24R-21	24 Round, 21" Height	999	1050	1101	1118	1150	1183	1198	1215	1230	1250
	HT30R-21	30 Round, 21" Height	1264	1346	1429	1457	1510	1562	1587	1615	1639	1671
	HTCUST	Custom Size	Call For Pricing									

### Hover Table Square 21" Height

	Model #	Description	Gr 1	Gr 2	Gr 3	Gr 4	Gr 5	Gr 6	Gr 7	Gr 8	Gr 9	Gr 10
	HT18S-21	18 Square, 21" Height	952	996	1040	1056	1085	1113	1126	1141	1154	1171
	HT24S-21	24 Square, 21" Height	1011	1062	1113	1130	1163	1195	1210	1228	1243	1262
	HT30S-21	30 Square, 21" Height	1276	1358	1442	1470	1523	1575	1600	1628	1653	1684
	HTCUST	Custom Size	Call For Pricing									

### Hover Table Round 18" Height

	Model #	Description	Gr 1	Gr 2	Gr 3	Gr 4	Gr 5	Gr 6	Gr 7	Gr 8	Gr 9	Gr 10
	HT18R-18	18 Round, 18" Height	919	951	983	994	1015	1034	1044	1055	1064	1076
	HT24R-18	24 Round, 18" Height	979	1030	1081	1098	1130	1163	1178	1195	1210	1230
	HT30R-18	30 Round, 18" Height	1244	1326	1409	1437	1490	1542	1567	1595	1620	1652
	HTCUST	Custom Size	Call For Pricing									

### Hover Table Square 18" Height

	Model #	Description	Gr 1	Gr 2	Gr 3	Gr 4	Gr 5	Gr 6	Gr 7	Gr 8	Gr 9	Gr 10
	HT18S-18	18 Square, 18" Height	930	975	1019	1034	1063	1091	1104	1119	1132	1150
	HT24S-18	24 Square, 18" Height	990	1040	1091	1109	1141	1174	1189	1206	1221	1241
	HT30S-18	30 Square, 18" Height	1255	1337	1420	1448	1501	1553	1578	1606	1631	1662
	HTCUST	Custom Size	Call For Pricing									





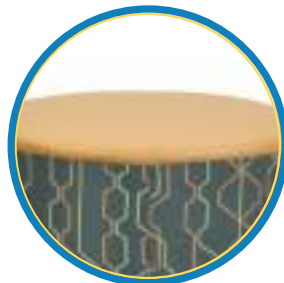
When ordering you must specify:

- 1) Complete model #
- 2) Upholstery and color choice name
- 4) Table top support finish
- 3) Table top finish finish

Then you may add additional option codes



Concealed Carpet Casters



Upholstery Combination



Stitching

## options & upgrades

Code	Description	List Price
<b><u>TABLE TOP FINISH</u></b>		
Standard Choices with matching edge:		
Black, Carter Oak, Designer White, Empire Mahogany, Fonhill Pear, Kensington Maple, Montana Walnut, Wild Cherry		N/C
SL	Wilsonart® laminate finishes ending with code 60 are available standard choices.	N/C
UL	Upgrade laminate choices, call for pricing.	CFP
<b><u>TABLE TOP SUPPORT FINISH</u></b>		
TSB	Table Top Support BLACK finish.	N/C
TSC	Table Top Support CHROME finish.	\$27
TSSM	Table Top Support SILVER METALLIC finish.	N/C
<b><u>GLIDES/CASTERS</u></b>		
HGLD	3/4" Nylon Nail-in Glides.	N/C

### com yardage

Hover Table Round 21"

HT18R-21	1.25
HT24R-21	2.25
HT30R-21	2.50

Hover Table Square 21"

HT18S-21	2.00
HT24S-21	2.25
HT30S-21	3.50

Hover Table Round 18"

HT18R-18	1.25
HT24R-18	2.25
HT30R-18	2.50

Hover Table Square 18"

HT18S-18	2.00
HT24S-18	2.25
HT30S-18	3.50

### freight

Model #	UPS/LTL
---------	---------

Hover Table Round 21"

HT18R-21	UPS
HT24R-21	UPS
HT30R-21	LTL

Hover Table Square 21"

HT18S-21	UPS
HT24S-21	UPS
HT30S-21	LTL

Hover Table Round 18"

HT18R-18	UPS
HT24R-18	UPS
HT30R-18	LTL

Hover Table Square 18"

HT18S-18	UPS
HT24S-18	UPS
HT30S-18	LTL

\*Please refer to page 2 to review COM procedures before submitting your order



- Attractive, generously proportioned form combines comfort and style.
- 3", high-density foam seat with comfortable padded back.
- 300lb weight capacity.
- Choose swivel or swivel tilt controls.
- Optional rotating arm with sturdy, round or paddle style, high pressure laminate tops and available fold away feature. Swing away table with rotating arm is only available on KF E20 or KO E20 models.
- Table top can be rotated to either side of the chair to accommodate both right and left-handed use.  
Paddle Table Top: 19 5/8" Length x 8" - 16 1/2" width.  
Round Table Top: 18" Diameter.
- Standard black composite base with casters.
- Customize your Kudl with optional base, glides, and caster options.
- Open and Full back models available.



model #  
KF E21

pricing

Kudl Swivel Full Back

	Model #	Description	Gr 1	Gr 2	Gr 3	Gr 4	Gr 5	Gr 6	Gr 7	Gr 8	Gr 9	Gr 10
	KF E20	Swivel	1028	1098	1167	1191	1236	1281	1301	1325	1346	1373
	KF E21	Swivel Tilt	1076	1146	1216	1240	1285	1329	1350	1374	1394	1421

Kudl Swivel Open Back

	Model #	Description	Gr 1	Gr 2	Gr 3	Gr 4	Gr 5	Gr 6	Gr 7	Gr 8	Gr 9	Gr 10
	KO E20	Swivel	1049	1113	1177	1198	1238	1280	1298	1320	1339	1363
	KO E21	Swivel Tilt	1098	1162	1225	1247	1287	1328	1347	1368	1388	1411

measurements

Model #	Style	Overall	Seat	Back	Arm Height
KF	Full Back	W 25 D 26 H 33.5	SW 21 SD 19 SH 16.5-21.25	BH 16.5	9
KO	Open Back	W 25 D 26 H 33.5	SW 21 SD 19 SH 16.5-21.25	BH 16.5	9

All measurements are approximate and can change depending on the configuration chosen.

com yardage

Model #	COM Yardage
KF	2.75
KO	2.50

Please refer to page 2 to review COM procedures before submitting your order

freight

Model #	UPS/LTL
KF E20	LTL
KF E21	LTL
KO E20	LTL
KO E21	LTL

When ordering you must specify:

- 1) Complete model #
- 2) Upholstery and color choice name

Then you may add additional option codes.

Please note:

- When ordering a swing away table with rotating arm, a table top finish must also be specified to complete the order.

**- Swing away table with rotating arm is only available on KF E20 or KO E20 Models.**



Round Table



Paddle Table



Flip Down Arm



Rotating Arm



Traditional Wood Base

## options & upgrades

Code	Description	List Price
<b><u>SWING AWAY TABLE TOP WITH ROTATING ARM</u> (Available with E20 Mechanism only) (Please specify Table Top Finish)</b>		
KPTB	Swing away PADDLE table top with BLACK finish rotating arm.	\$460
KPTC	Swing away PADDLE table top with CHROME finish rotating arm.	\$487
KPTSM	Swing away PADDLE table top with SILVER METALLIC finish rotating arm.	\$460
KRTB	Swing away ROUND table top with BLACK finish rotating arm.	\$460
KRTC	Swing away ROUND table top with CHROME finish rotating arm.	\$487
KRTSM	Swing away ROUND table top with SILVER METALLIC finish rotating arm.	\$460
<b><u>TABLE TOP FINISH</u></b>		
Standard Choices with matching edge:		
	Black, Carter Oak, Designer White, Empire Mahogany, Fonthill Pear, Kensington Maple, Montana Walnut, Wild Cherry	N/C
SL	Wilsonart® laminate finishes ending with code 60 are available standard choices.	N/C
UL	Upgrade laminate choices, call for pricing.	CFP
<b><u>FLIP DOWN TABLE TOP</u></b>		
KFD	Flip down table top mechanism for table top. Used with rotating arm.	\$270
<b><u>BASE/GLIDES/CASTERS</u></b>		
BSB	25", 5 Leg Black Composite Spider Base – Black finish with 75mm non-hooded carpet casters.	\$17
CAB	26", 5 Leg Cast Aluminum Base – Black Finish.	\$58
CAC	26", 5 Leg Cast Aluminum Base – Chrome Finish.	\$58
PAB	25", 5 Leg Cast Aluminum Spider Base – Polished aluminum finish with 75mm non-hooded carpet casters.	\$59
PATL	26", Trumpet Base - Chrome Finish.	\$97
WB	26" Traditional Wood Base – 2" hooded ball casters with bronze finish. Standard wood finish choices (matching wood finish available. See Code MWF): Black, Cafelle, Wild Cherry, Fonthill Pear, Designer White, Kensington Maple, Montana Walnut, or Empire Mahogany.	\$257
MWF	Matching wood finish for wood base (WB) - A wood sample chip must be sent to Seating Inc. for wood finish matching.	\$81
GLIDES	2 1/2" Carpet/Hard Floor Glides.	N/C
STW	Soft Twin Wheel Casters – For use on hard floors.	\$24
SWB	Soft Twin Wheel Braking Casters – Brakes steady chair as user sits – For use on hard floors. Only available on Standard base, CAB and CAC bases.	\$47
<b><u>SPECIALTY</u></b>		
UC	Upholstery combination. See Page 2 for further instructions.	\$47
CAL	Flame Guard – Chair made to conform to CAL 133 spec.	\$62 per yard used



# kudl 4-LEG WOOD


- Attractive, generously proportioned form combines comfort and style.
- 3", high-density foam seat with comfortable padded back.
- 300lb weight capacity.
- 4-leg solid beech wood legs with glides
- Choose from standard wood frame finish colors:  
Designer White, Kensington Maple, Fonthill Pear, Wild Cherry, Montana Walnut, Empire Mahogany, Cafelle, or Black.
- Available matching wood frame finish.
- Standard seat height is 18".
- Tall model has a 25" counter height seat with wood foot rail.
- 90° left and right swivel with memory return option available.
- Open and Full back models available.




## pricing

model #  
KF4W


### Kudl 4-Leg Wood Full Back

	Model #	Description	Gr 1	Gr 2	Gr 3	Gr 4	Gr 5	Gr 6	Gr 7	Gr 8	Gr 9	Gr 10
	KF4W	4-Leg Wood	1384	1455	1524	1548	1593	1638	1658	1682	1702	1729


### Kudl 4-Leg Wood Open Back

	Model #	Description	Gr 1	Gr 2	Gr 3	Gr 4	Gr 5	Gr 6	Gr 7	Gr 8	Gr 9	Gr 10
	KO4W	4-Leg Wood	1406	1470	1534	1555	1595	1636	1655	1676	1696	1720

### Kudl 4-Leg Tall Wood Full Back - Counter Height

	Model #	Description	Gr 1	Gr 2	Gr 3	Gr 4	Gr 5	Gr 6	Gr 7	Gr 8	Gr 9	Gr 10
	KF4T	4-Leg Wood Tall	1493	1563	1632	1656	1701	1746	1766	1790	1811	1838

### Kudl 4-Leg Tall Wood Open Back - Counter Height

	Model #	Description	Gr 1	Gr 2	Gr 3	Gr 4	Gr 5	Gr 6	Gr 7	Gr 8	Gr 9	Gr 10
	KO4T	4-Leg Wood Tall	1514	1578	1642	1664	1704	1745	1763	1785	1804	1828

When ordering you must specify:

- 1) Complete model #
- 2) Wood frame finish color
- 3) Upholstery and color choice name

Then you may add additional option codes.



Swivel Left 90°



Swivel Return Center



Swivel Right 90°



Tall Base Wood Foot Rail

## options & upgrades

### WOOD FRAME FINISH

Standard Choices (matching wood finish available):

Black, Carter Oak, Designer White, Empire Mahogany, Fonthill Pear, Kensington Maple, Montana Walnut, Wild Cherry

N/C

MWF

Matching wood finish - A wood sample chip must be sent to Seating Inc. for wood finish matching.

\$81

### SPECIALTY

KMR 90° left and right swivel with memory return

\$54

UC Upholstery combination. See Page 2 for further instructions.

\$47

CAL Flame Guard – Chair made to conform to CAL 133 spec.

\$62 per yard used

## measurements

Model #	Style	Overall	Seat	Back	Arm Height
KF4W	Full Back	W 25 D 26 H 33.5	SW 21 SD 19 SH 18	BH 16.5	9
KO4W	Open Back	W 25 D 26 H 33.5	SW 21 SD 19 SH 18	BH 16.5	9
KF4T	Full Back Tall	W 25 D 26 H 40.5	SW 21 SD 19 SH 25	BH 16.5	9
KO4T	Open Back Tall	W 25 D 26 H 40.5	SW 21 SD 19 SH 25	BH 16.5	9

All measurements are approximate and can change depending on the configuration chosen.

### com yardage

Model #	COM Yardage
KF	2.75
KO	2.50

Please refer to page 2 to review COM procedures before submitting your order

### freight

Model #	UPS/LTL
KF4W	LTL
KO4W	LTL
KF4T	LTL
KO4T	LTL



# make space table ROUND

- 18" • 24" • 30" • 36" • 42" Round Table Tops
- Available in 16" or 21" heights.
- 1 ¼" High density laminate top.
- Standard Wilsonart® Table top finishes with matching edge:  
White Driftwood, Carter Oak, Designer White, Kensington Maple,  
Fonthill Pear, Wild Cherry, Montana Walnut,  
Empire Mahogany, Cafelle, or Black.
- 1½" round or square steel legs with black insert glides and  
welded connecting plates.
- Choose Black, Chrome, or Silver Metallic finish legs.
- CAUTION! Do not sit or stand on tables.



model #  
MS30R MLSC AHG

## pricing

### Table Round 16" & 21" height

	Model #	Description	List Price	Freight
	MS18R	18" Round, 16" Height	500	UPS
	MT18R	18" Round, 21" Height	500	UPS
	MS24R	24" Round, 16" Height	504	UPS
	MT24R	24" Round, 21" Height	504	UPS
	MS30R	30" Round, 16" Height	679	UPS
	MT30R	30" Round, 21" Height	679	UPS
	MS36R	36" Round, 16" Height	692	LTL
	MT36R	36" Round, 21" Height	692	LTL
	MS42R	42" Round, 16" Height	714	LTL
	MT42R	42" Round, 21" Height	714	LTL



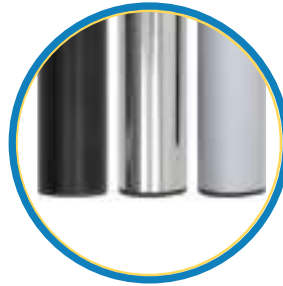
Seating Inc. | 60 N. State Street | PO Box 898 | Nunda, NY 14517 | 800.468.2475 | orders@seatinginc.com

# make space table ROUND

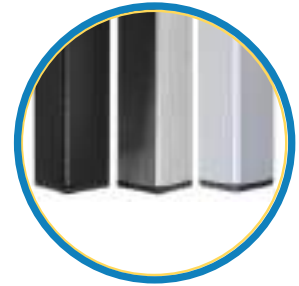
When ordering you must specify:

- 1) Complete model #
- 2) Table top finish and edge finish
- 3) Leg shape and finish

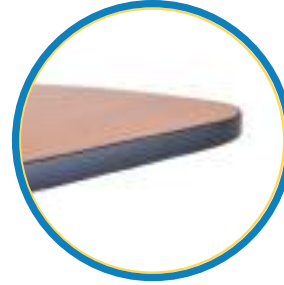
Then you may add additional option codes.



Round Leg



Square Leg



Contrasting Edge

## options & upgrades

Code	Description	List Price
<b>TABLE TOP FINISH</b>		
Standard Choices with matching edge:		
	Black, Carter Oak, Designer White, Empire Mahogany, Fonthill Pear, Kensington Maple, Montana Walnut, Wild Cherry	N/C
SL	Wilsonart® laminate finishes ending with code 60 are available standard choices.	N/C
UL	Upgrade laminate choices, call for pricing.	CFP
CE	Contrasting Black 3mm edge.	N/C
UE	Upgrade contrasting edge. Any color other than black.	CFP
<b>LEGS - Set of 4</b>		
MLRB	Round Leg BLACK finish.	N/C
MLRC	Round Leg CHROME finish.	\$27
MLRSM	Round Leg SILVER METALLIC finish.	N/C
MLSB	Square Leg BLACK finish.	N/C
MLSC	Square Leg CHROME finish.	\$27
MLSSM	Square Leg SILVER METALLIC finish.	N/C
<b>GLIDES</b>		
AHG	Adjustable height glides.	\$43
AHGV	Adjustable height VCT Floor saver glides. Prevents damage to VCT tile. Not for use on carpet.	\$65





# make space table SQUARE

- 18" • 24" • 30" • 36" • 42" Square Table Tops
- Available in 16" or 21" heights.
- 1 ¼" High density laminate top.
- Standard Wilsonart® Table top finishes with matching edge:  
White Driftwood, Carter Oak, Designer White, Kensington Maple,  
Fonthill Pear, Wild Cherry, Montana Walnut,  
Empire Mahogany, Cafelle, or Black.
- 1½" round or square steel legs with black insert glides and  
welded connecting plates.
- Choose Black, Chrome, or Silver Metallic finish legs.
- CAUTION! Do not sit or stand on tables.



model #  
MT18S MLRB

## pricing

### Table Square 16" & 21" height

	Model #	Description	List Price	Freight
	MS18S	18" Square, 16" Height	500	UPS
	MT18S	18" Square, 21" Height	500	UPS
	MS24S	24" Square, 16" Height	504	UPS
	MT24S	24" Square, 21" Height	504	UPS
	MS30S	30" Square, 16" Height	679	UPS
	MT30S	30" Square, 21" Height	679	UPS
	MS36S	36" Square 16" Height	692	LTL
	MT36S	36" Square, 21" Height	692	LTL
	MS42S	42" Square, 16" Height	714	LTL
	MT42S	42" Square, 21" Height	714	LTL

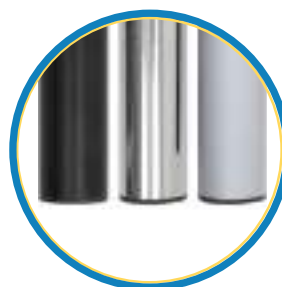


# make space table SQUARE

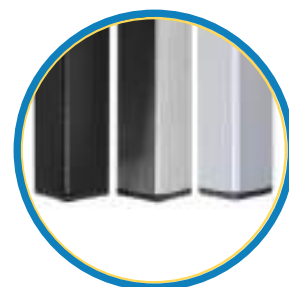
When ordering you must specify:

- 1) Complete model #
- 2) Table top finish and edge finish
- 3) Leg shape and finish

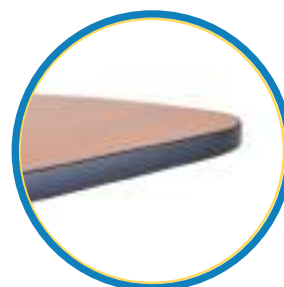
Then you may add additional option codes.



Round Leg



Square Leg



Contrasting Edge

## options & upgrades

Code	Description	List Price
<b><u>TABLE TOP FINISH</u></b>		
	Standard Choices with matching edge:	
	Black, Carter Oak, Designer White, Empire Mahogany, Fonthill Pear, Kensington Maple, Montana Walnut, Wild Cherry	N/C
SL	Wilsonart® laminate finishes ending with code 60 are available standard choices.	N/C
UL	Upgrade laminate choices, call for pricing.	CFP
CE	Contrasting Black 3mm edge.	N/C
UE	Upgrade contrasting edge. Any color other than black.	CFP
<b><u>LEGS - Set of 4</u></b>		
MLRB	Round Leg BLACK finish.	N/C
MLRC	Round Leg CHROME finish.	\$27
MLRSM	Round Leg SILVER METALLIC finish.	N/C
MLSB	Square Leg BLACK finish.	N/C
MLSC	Square Leg CHROME finish.	\$27
MLSSM	Square Leg SILVER METALLIC finish.	N/C
<b><u>GLIDES</u></b>		
AHG	Adjustable height glides.	\$43
AHGV	Adjustable height VCT Floor saver glides. Prevents damage to VCT tile. Not for use on carpet.	\$65



# make space table COFFEE

- 23" wide x 46" long.
- Available in 16" or 21" heights.
- 1 ¼" High density laminate top.
- Standard Wilsonart® Table top finishes with matching edge:  
White Driftwood, Carter Oak, Designer White, Kensington Maple,  
Fonthill Pear, Wild Cherry, Montana Walnut,  
Empire Mahogany, Cafelle, or Black.
- 1½" round or square steel legs with black insert glides and  
welded connecting plates.
- Choose Black, Chrome, or Silver Metallic finish legs.
- CAUTION! Do not sit or stand on tables.



model #  
MS23C MLRB

## pricing

### Coffee Table 16" & 21" height

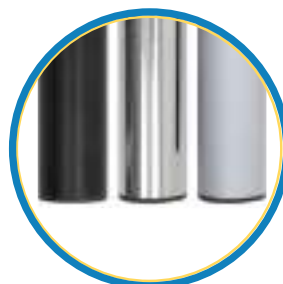
	Model #	Description	List Price	Freight
	MS23C	23" x 46" Coffee, 16" Height	700	UPS
	MT23C	23" x 46" Coffee, 21" Height	700	UPS

# make space table COFFEE

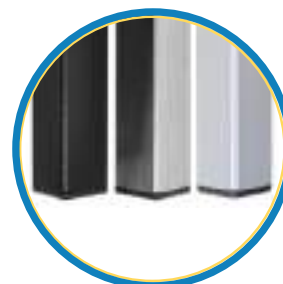
When ordering you must specify:

- 1) Complete model #
- 2) Table top finish and edge finish
- 3) Leg shape and finish

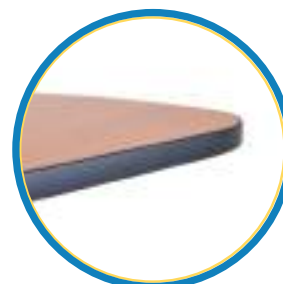
Then you may add additional option codes.



Round Leg



Square Leg



Contrasting Edge

## options & upgrades

Code	Description	List Price
<b>TABLE TOP FINISH</b>		
Standard Choices with matching edge:		
Black, Carter Oak, Designer White, Empire Mahogany, Fonthill Pear, Kensington Maple, Montana Walnut, Wild Cherry		N/C
SL	Wilsonart® laminate finishes ending with code 60 are available standard choices.	N/C
UL	Upgrade laminate choices, call for pricing.	CFP
CE	Contrasting Black 3mm edge.	N/C
UE	Upgrade contrasting edge. Any color other than black.	CFP
<b>LEGS - Set of 4</b>		
MLRB	Round Leg BLACK finish.	N/C
MLRC	Round Leg CHROME finish.	\$27
MLRSM	Round Leg SILVER METALLIC finish.	N/C
MLSB	Square Leg BLACK finish.	N/C
MLSC	Square Leg CHROME finish.	\$27
MLSSM	Square Leg SILVER METALLIC finish.	N/C
<b>GLIDES</b>		
AHG	Adjustable height glides.	\$43
AHGV	Adjustable height VCT Floor saver glides. Prevents damage to VCT tile. Not for use on carpet.	\$65



# MAKE SPACE COLLECTION STATEMENT OF LINE

---

## dock bench

(LEGS: ROUND OR SQUARE, BLACK, CHROME, OR SILVER METALLIC. MINI 15" HEIGHT AVAILABLE)



DB2418



DB4818



DB6018



DB7218

---

## dock square

(LEGS: ROUND OR SQUARE, BLACK, CHROME, OR SILVER METALLIC. MINI 15" HEIGHT AVAILABLE)



DB1818



DB2424



DB3030

---

## hover round & hover square seating and tables

(MINI 15" HEIGHT AVAILABLE)



HP18R



HP24R



HP30R



HP18S



HP24S



HP30S

# MAKE SPACE COLLECTION STATEMENT OF LINE

## kudl swivel



KO E20/E21



KF E20/E21

## kudl 4-leg

(4-LEG METAL FRAME AVAILABLE WITH BLACK, CHROME, OR SILVER METALLIC LEGS)



KO4W



KF4W



KO4T



KF4T

## tables: round, square, or coffee

(LEGS: ROUND OR SQUARE, BLACK, CHROME, OR SILVER METALLIC, 16" OR 21" HEIGHT)



MS18R



MS24R



MS30R



MS36R



MS42R



MS18S



MS24S



MS30S



MS36S



MS42S



MS23C





Every seat has a story.

It starts with genuine, hands on craftsmanship where both style and materials are tested and trusted, right down the production line, all the way to the satisfied customer. And it's been that way since 1989.

For us quality isn't just a word, it's the only way, and it never takes a backseat to the bottom line. That's why your seat is safe with us.

Dock  
Benches available  
in both standard  
and custom sizes

Hover  
Versatile portable seating  
units with concealed casters

Kudl  
Generously proportioned  
arm chair with wood and  
swivel bases