

OCCASIONAL TABLES
LIST PRICES EFFECTIVE
JANUARY 15, 2018

OCCASIONAL TABLES



2 0 1 8

HBF 2018 Occasional Tables Price List Contents

Mailing Address: HBF PO Box 8 Hickory NC 28603-0008	Shipping Address: HBF 900 - 12th Street Drive NW Hickory NC 28601-4763	Contact: Phone: 1.855.HBF.2020 828.328.2064 Fax: 828.485.2690 Info: info@hbf.com www.hbf.com	Order Processing: Phone: 1.855.HBF.2020 828.328.2064 Fax: 828.485.2690 hbfforders@hbf.com
--	---	--	--

CONTENTS

PAGE

GENERAL INFORMATION

ANSI/BIFMA e3-2012 Furniture Sustainability	2
High Performance Products	2
Product Materials Options	3
Quick Ship Program	10
SCS Indoor Advantage™ Gold Certified	2
Veneers and finishes	2

OCCASIONAL TABLES

Ami	16
Asa	18
Carousel	19
Cortona	26
Frame	33
Harmoni	39
Lens	41
November	57
Parker	69
Slice	74
Trestle	78
Triscape	80

HBF Occasional Tables

Occasional Table Finish Options

ANSI/BIFMA e3-2012 Furniture Sustainability Standard level® I

HBF’s production facilities, organizational policies and component materials of the products have met all of the necessary qualifications to comply with the industry’s most comprehensive furniture sustainability standard.

level® is the multi-attribute, sustainability standard and third-party certification program for the furniture industry. It has been created to deliver the most open and transparent means of evaluating and communicating the environmental and social impacts of furniture products in the built environment.

Taking into account a company’s social actions, energy usage, material selection and human and ecosystem health impacts, level® addresses how a product is sustainable from multiple perspectives. With level®, customers can make informed choices about commercial furniture that exceed single attribute eco-certifications. The level® brand identifies that a product has been vetted by an independent third party certifier and its numeric marking 1, 2 or 3 which indicates the threshold of certification it has achieved.

HBF’s seating, occasional tables, casegoods and conference lines are level® certified. Please download the certificates from our product pages for the complete details.

For more information about the ANSI/BIFMA level® standard, visit www.levelcertified.org

SCS Indoor Advantage™

HBF occasional table products are SCS Indoor Advantage™ Gold Certified.

SCS Global Services (SCS), a reputable third-party certification and assessment body of environmental, sustainability and safety claims since 1984, has developed internationally recognized standards and certification programs to assist businesses with improving their environmental efforts, social accountability and product performance.

HBF High Performance Products

HBF and HBF Textiles have long been leaders in contract furnishings and known for industry-leading product design coupled with the highest quality construction, comfort and aesthetic beauty.

Now these same principles are the cornerstones of HBF Healthcare high performance products. We have consulted with healthcare designers and clients to provide products and options for interiors that will provide quality sustainable design solutions for the future. These effective solutions will address the unique interactions required by any high-use facility. Visit www.hbf.com for additional high performance product information.

Occasional Table Product High Performance Options:

- Coffee, End and Console Tables
- Acrylic Solid Surface Tops
- Laminate Tops
- Durable Wood Finishes
- Metal Legs
- Surfaces for High Use Areas

Veneer and Finishes

Wood owes its inherent beauty to variations in color, grain, and texture; therefore, these variations are not considered defects. Due to the natural color and grain variances of wood the final finish color, texture and grain may vary from one furniture piece to another even though they are finished at the same time. Exposure to light and the aging process will cause changes in surface color of natural wood products. Light finishes on wood products do not mask the natural characteristics of wood. HBF does not guarantee the exact matching of grain, pattern and color.

An upcharge of **5% Net** per unit for occasional tables, with a minimum upcharge of **\$500 Net** per order, will apply for any custom wood finish.

Refer to the following page for product material options.



OCCASIONAL TABLES MATERIAL OPTIONS

ASH: (AH) CORE FINISHES



AH310
Smoke Opaque



AH400
Clear



AH402
Black Opaque



AH403
Grey Opaque



AH404
Warm White Opaque



AH405
Mist Opaque



AH406
Denim Opaque



AH407
Pewter Opaque



AH408
Peppercorn Opaque



AH901
Amber



AH902
Designer White Opaque



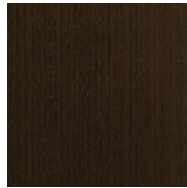
AH911
Warm Brick



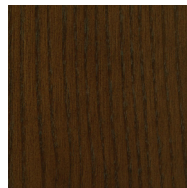
AH929
Nutmeg



AH937
Bark



AH984
Dark Roast



AH993
Sumatra

ASH: (AH) CURATED FINISHES



AH150
Conifer Opaque



AH151
Blue Ridge Opaque



AH152
Cameo Opaque



AH153
Cordovan Opaque



AH154
Bittersweet Opaque

Screen images are intended as a guide only and should not be regarded as absolutely correct.
For exact color/texture, please visit www.hbf.com to request an actual sample.



OCCASIONAL TABLES MATERIAL OPTIONS

OAK: (RK) CORE FINISHES



RK310
Smoke Opaque



RK400
Clear



RK402
Black Opaque



RK403
Grey Opaque



RK404
Warm White Opaque



RK405
Mist Opaque



RK406
Denim Opaque



RK407
Pewter Opaque



RK408
Peppercorn Opaque



RK901
Amber



RK902
Designer White Opaque



RK911
Warm Brick



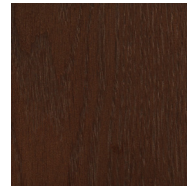
RK929
Nutmeg



RK937
Bark



RK984
Dark Roast



RK993
Sumatra

OAK: (RK) CURATED FINISHES



RK150
Conifer Opaque



RK151
Blue Ridge Opaque



RK152
Cameo Opaque



RK153
Cordovan Opaque



RK154
Bittersweet Opaque

Screen images are intended as a guide only and should not be regarded as absolutely correct.
For exact color/texture, please visit www.hbf.com to request an actual sample.

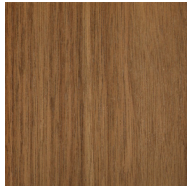


OCCASIONAL TABLES MATERIAL OPTIONS

WALNUT: (NT) CORE FINISHES



NT310
Smoke Opaque



NT400
Clear



NT402
Black Opaque



NT403
Grey Opaque



NT404
Warm White Opaque



NT405
Mist Opaque



NT406
Denim Opaque



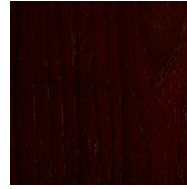
NT407
Pewter Opaque



NT408
Peppercorn Opaque



NT902
Designer White Opaque



NT911
Warm Brick



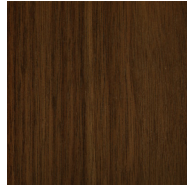
NT929
Nutmeg



NT937
Bark



NT984
Dark Roast

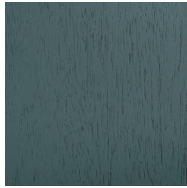


NT993
Sumatra

WALNUT: (NT) CURATED FINISHES



NT150
Conifer Opaque



NT151
Blue Ridge Opaque



NT152
Cameo Opaque



NT153
Cordovan Opaque



NT154
Bittersweet Opaque

Screen images are intended as a guide only and should not be regarded as absolutely correct.
For exact color/texture, please visit www.hbf.com to request an actual sample.



OCCASIONAL TABLES MATERIAL OPTIONS

MAPLE: (NE) *Note: Only available on the following collections: Catalina, Lens*



NE215
Medium Brown Cherry



NE230
Mocha



NE284
Chicory Cherry



NE293
Chestnut Cherry



NE331
Dark Rift Oak



NE511
Dark Red Cherry



NE601
Light Roast Walnut



NE615
Coffee Walnut



NE629
Nutmeg Walnut



NE637
Charcoal Grey



NE684
Dark Roast Walnut



NE693
Sumatra Walnut



NE701
Light Cherry



NE706
Wheat Cherry



NE744
Canyon Cherry



NE777
Burnished Cherry



NE800
Natural Maple



NE873
Honey Maple

Screen images are intended as a guide only and should not be regarded as absolutely correct.
For exact color/texture, please visit www.hbf.com to request an actual sample.



OCCASIONAL TABLES MATERIAL OPTIONS

WOOD LAMINATES: (PL) *Note: Available on selected products*



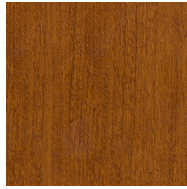
PLBW
Beigewood



PL215
Williamsburg Cherry



PL511
Empire Mahogany



PL701
Bourbon Cherry



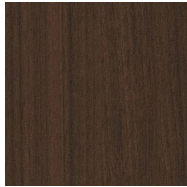
PL800
Natural Maple



PL7933
Cafelle



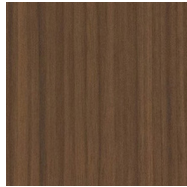
PL7935
Shaker Cherry



PL7943
Columbian Walnut



PL7964
Skyline Walnut



PL7965
Walnut Heights



PLWP110
Looks Likatre

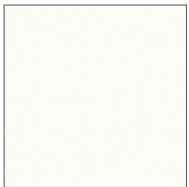


PLWP115
Appears Likatre

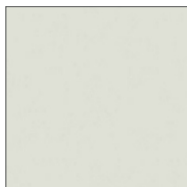


PLWP120
Leave Likatre

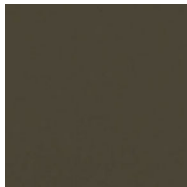
SOLID LAMINATES:



PLSW803
Eggshell White



PL15034
Loft-Grey Cloud



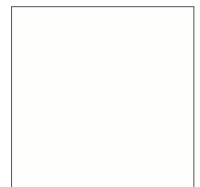
PL15037
Cocoa Brown



PLLF
Greystone



PLSW806
Carnation White



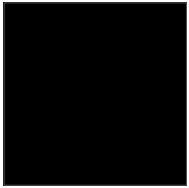
PLWH
Designer White

Screen images are intended as a guide only and should not be regarded as absolutely correct.
For exact color/texture, please visit www.hbf.com to request an actual sample.

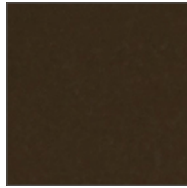


OCCASIONAL TABLES MATERIAL OPTIONS

POWDER COATS:



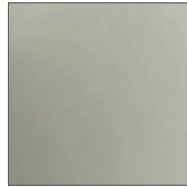
BL
Black



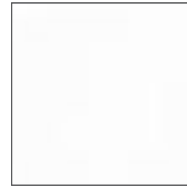
BZ
Bronze



LG
Light Grey

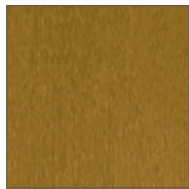


SP
Satin Pewter

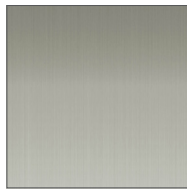


WI
White

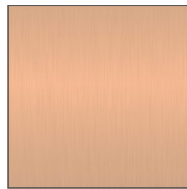
METALS:



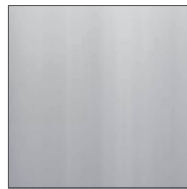
BAL
Antique Brass



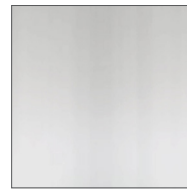
BSS
Brushed Stainless



CAL
Brushed Copper



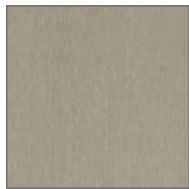
PAL
Polished Aluminum



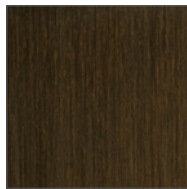
POL
Polished Chrome



PSS
Polished Stainless

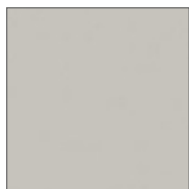


SCL
Satin Chrome



ZAL
Antique Bronze

SOLID SURFACE:



SCU1
Cumulous



SDW1
Designer White



SSN1
Sandrift

Screen images are intended as a guide only and should not be regarded as absolutely correct.
For exact color/texture, please visit www.hbf.com to request an actual sample.

QUARTZ:



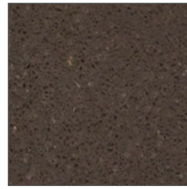
EQCC1
Concrete



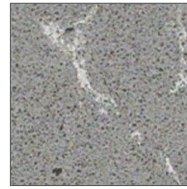
EQCU1
Cumulus



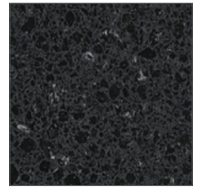
EQDW1
Designer White



EQPP1
Peppercorn



EQST1
Storm Grey

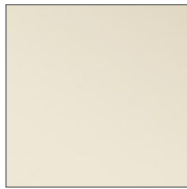


EQTX1
Tuxedo

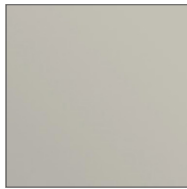
GLASS:



GBL1
Black



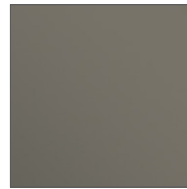
GBZ
Bronze



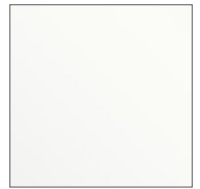
GCG1
Cool Grey



GLC
Clear

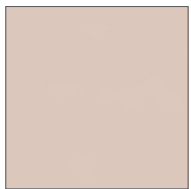


GWG1
Warm Grey

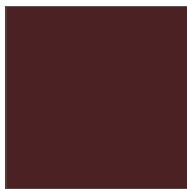


GWI1
White

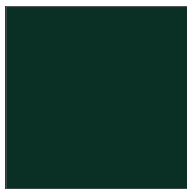
FORBO:



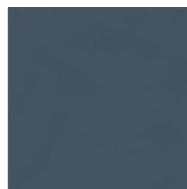
FCA1
Cameo



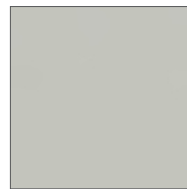
FCD1
Cordovan



FCF1
Conifer



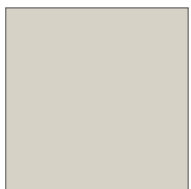
FDM1
Denim



FMT1
Grey



FNB1
Near Black



FSN1
Sandrift



FTX1
Tuxedo

HBF Occasional Tables

Ami Occasional Table Series Specifications

HeightCoffee Table

ShapeRound

WoodSolid Ash

Ami Coffee Table



Ash
Round Top

Style Number	Top Description	List Price	OH	Diameter	Shipping Weight	Cube
HTB61701R-2036	wood	2890	20	36		

level® Certified Pending
SCS Indoor Advantage™ Certified Pending

PLEASE SPECIFY THE FOLLOWING TO ORDER:

MODEL NUMBER	SPECIES & FINISH
	Options for wood finishes: AH = Ash
	Core Finishes:
	310 = Smoke Opaque
	400 = Clear
	402 = Black Opaque
	403 = Grey Opaque
	404 = Warm White Opaque
	405 = Mist Opaque
	406 = Denim Opaque
	407 = Pewter Opaque
	408 = Peppercorn Opaque
	901 = Amber
	902 = Designer White Opaque
	911 = Warm Brick
	929 = Nutmeg
	937 = Bark
	984 = Dark Roast
	993 = Sumatra
	Curated Finishes: +\$50
	150 = Conifer Opaque
	151 = Blue Ridge Opaque
	152 = Cameo Opaque
	153 = Cordovan Opaque
	154 = Bittersweet Opaque

HTB61701R-2036.Finish Example: HTB61701R-2036.AH310

HBF Occasional Tables

Ami Coffee Table



*Ash
Round Top*

Style Number	Top Description	List Price	OH	Diameter	Shipping Weight	Cube
HTB61701R-2042	wood	3815	20	42		

level® Certified Pending
SCS Indoor Advantage™ Certified Pending

PLEASE SPECIFY THE FOLLOWING TO ORDER:

MODEL NUMBER	SPECIES & FINISH
	Options for wood finishes: AH = Ash
	<div> <div>Core Finishes:</div> <div> <div>310</div> <div>= Smoke Opaque</div> </div> <div> <div>400</div> <div>= Clear</div> </div> <div> <div>402</div> <div>= Black Opaque</div> </div> <div> <div>403</div> <div>= Grey Opaque</div> </div> <div> <div>404</div> <div>= Warm White Opaque</div> </div> <div> <div>405</div> <div>= Mist Opaque</div> </div> <div> <div>406</div> <div>= Denim Opaque</div> </div> <div> <div>407</div> <div>= Pewter Opaque</div> </div> <div> <div>408</div> <div>= Peppercorn Opaque</div> </div> <div> <div>901</div> <div>= Amber</div> </div> <div> <div>902</div> <div>= Designer White Opaque</div> </div> <div> <div>911</div> <div>= Warm Brick</div> </div> <div> <div>929</div> <div>= Nutmeg</div> </div> <div> <div>937</div> <div>= Bark</div> </div> <div> <div>984</div> <div>= Dark Roast</div> </div> <div> <div>993</div> <div>= Sumatra</div> </div> </div> <div> <div>Curated Finishes: +\$50</div> <div> <div>150</div> <div>= Conifer Opaque</div> </div> <div> <div>151</div> <div>= Blue Ridge Opaque</div> </div> <div> <div>152</div> <div>= Cameo Opaque</div> </div> <div> <div>153</div> <div>= Cordovan Opaque</div> </div> <div> <div>154</div> <div>= Bittersweet Opaque</div> </div> </div>

HTB61701R-2042.Finish Example: HTB61701R-2042.AH310

HBF Occasional Tables

Asa Occasional Table Series Specifications

SurfacesWood | Back Painted Glass | Solid Surface

Glass1/2" thick Glass

ShapeRound

FinishBlack Powder Coat | Polished Stainless Steel

Asa Side Table



Style Number	Top Description	List Price	OH	DIA	Shipping Weight	Cube
HTL41301R-2520	wood	1228	25	20	24	18

Metal Base - Black Powder Coat
Round Top

level® Certified
SCS Indoor Advantage™ Certified

PLEASE SPECIFY THE FOLLOWING TO ORDER:

MODEL NUMBER	TOP MATERIALS & FINISH	BASE FINISH
	Options for wood finishes: AH = Ash <div> Core Finishes: <div> 310 = Smoke Opaque 400 = Clear +\$185 402 = Black Opaque 403 = Grey Opaque 404 = Warm White Opaque 405 = Mist Opaque 406 = Denim Opaque 407 = Pewter Opaque 408 = Peppercorn Opaque 901 = Amber 902 = Designer White Opaque 911 = Warm Brick 929 = Nutmeg 937 = Bark 984 = Dark Roast 993 = Sumatra </div> Curated Finishes: +\$50 <div> 150 = Conifer Opaque 151 = Blue Ridge Opaque 152 = Cameo Opaque 153 = Cordovan Opaque 154 = Bittersweet Opaque </div> </div>	Options for metal finish: <div> BL = Black Powder Coat PSS = Polished Stainless Steel +\$100 WI = White Powder Coat </div>
	Finish options for glass: G = Glass +\$185 <div> BPW = Designer White </div> Options for solid surface: S = Solid Surface +\$1075 <div> AW = Alabaster White </div> Options for solid surfaces (premium): +\$1225 <div> DW1 = Designer White CU1 = Cumulous SN1 = Sandrift </div>	

HTL41301R-2520.Top.Base Example: HTL41301R-2520.AH400.BL

HBF Occasional Tables

Carousel Occasional Table Series Specifications

Surfaces	Wood Glass Inset
Glass	1/2” thick
Reveal	3/16”
Shape	Round
Base	Wood

Carousel Table



Style Number	Top Description	List Price	OH	DIA	Shipping Weight	Cube
HTC10901R-2224	wood	1894	22	24	28	17.8

Oak Base
Round Top

level® Certified
SCS Indoor Advantage™ Certified

PLEASE SPECIFY THE FOLLOWING TO ORDER:

MODEL NUMBER	TOP	SPECIES & FINISH
	Indicate top:	Options for wood finishes: RK = Oak
	<div>W = Wood</div> <div>GBZ = Bronze Glass +\$600</div> <div>GCL = Clear Glass</div>	<div>Core Finishes:</div> <div>310 = Smoke Opaque</div> <div>400 = Clear</div> <div>402 = Black Opaque</div> <div>403 = Grey Opaque</div> <div>404 = Warm White Opaque</div> <div>405 = Mist Opaque</div> <div>406 = Denim Opaque</div> <div>407 = Pewter Opaque</div> <div>408 = Peppercorn Opaque</div> <div>901 = Amber</div> <div>902 = Designer White Opaque</div> <div>911 = Warm Brick</div> <div>929 = Nutmeg</div> <div>937 = Bark</div> <div>984 = Dark Roast</div> <div>993 = Sumatra</div> <div>Curated Finishes: +\$50</div> <div>150 = Conifer Opaque</div> <div>151 = Blue Ridge Opaque</div> <div>152 = Cameo Opaque</div> <div>153 = Cordovan Opaque</div> <div>154 = Bittersweet Opaque</div>

HTC10901R-2224.Top.Base Example: HTC10901R-2224.GBZ.RK400 or HTC10901R-2224.W.RK400

HBF Occasional Tables

Carousel Coffee Table



Style Number	Top Description	List Price	OH	DIA	Shipping Weight	Cube
HTC10901R-1642	wood	2670	16	42	60	34

Oak Base
Round Top

level® Certified
SCS Indoor Advantage™ Certified

PLEASE SPECIFY THE FOLLOWING TO ORDER:

MODEL NUMBER	TOP	SPECIES & FINISH
	Indicate top:	Options for wood finishes: RK = Oak
	<div>W = Wood</div> <div>GBZ = Bronze Glass +\$1230</div> <div>GCL = Clear Glass</div>	<div>Core Finishes:</div> <div>310 = Smoke Opaque</div> <div>400 = Clear</div> <div>402 = Black Opaque</div> <div>403 = Grey Opaque</div> <div>404 = Warm White Opaque</div> <div>405 = Mist Opaque</div> <div>406 = Denim Opaque</div> <div>407 = Pewter Opaque</div> <div>408 = Peppercorn Opaque</div> <div>901 = Amber</div> <div>902 = Designer White Opaque</div> <div>911 = Warm Brick</div> <div>929 = Nutmeg</div> <div>937 = Bark</div> <div>984 = Dark Roast</div> <div>993 = Sumatra</div> <div>Curated Finishes: +\$50</div> <div>150 = Conifer Opaque</div> <div>151 = Blue Ridge Opaque</div> <div>152 = Cameo Opaque</div> <div>153 = Cordovan Opaque</div> <div>154 = Bittersweet Opaque</div>

HTC10901R-1642.Top.Base Example: HTC10901R-1642.GBZ.RK400 or HTC10901R-1642.W.RK400

HBF Occasional Tables

Cortona Table



Metal Base
Round Top
Actual diameter of top is 24"

Style Number	Top Description	List Price	OH	DIA	Shipping Weight	Cube
HTF20301R-2226	glass	1217	22¼	26¼	46	18.4

level* Certified
SCS Indoor Advantage™ Certified

PLEASE SPECIFY THE FOLLOWING TO ORDER:

MODEL NUMBER	TOP	FINISH	BASE
	Indicate top:	Options for glass:	Options for base finish:
	<input type="checkbox"/> G = Glass	<input type="checkbox"/> FG = Frosted Glass	<input type="checkbox"/> SP = Satin Pewter
<div></div>	<div></div>	<div></div>	<div></div>

HTF20301R-2226.Top.Base Example: HTF20301R-2226.GFG.SP

HBF Occasional Tables

Frame Table



Ash Base
 Square Inset Top
 Shelf

Style Number	Top Description	List Price	OH	OW	OD	Shipping Weight	Cube
HTF50501S-2220	wood	1626	22½	20 ⁷ / ₁₆	20 ⁷ / ₁₆	34	18

level® Certified
 SCS Indoor Advantage™ Certified

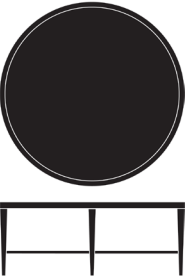
PLEASE SPECIFY THE FOLLOWING TO ORDER:

MODEL NUMBER	TOP	SPECIES & FINISH
	Indicate top: <div>W = Wood</div> <div>GCL = Clear Glass +\$306</div>	Options for wood finishes: AH = Ash <div>Core Finishes:</div> <div>310 = Smoke Opaque</div> <div>400 = Clear +\$244</div> <div>402 = Black Opaque</div> <div>403 = Grey Opaque</div> <div>404 = Warm White Opaque</div> <div>405 = Mist Opaque</div> <div>406 = Denim Opaque</div> <div>407 = Pewter Opaque</div> <div>408 = Peppercorn Opaque</div> <div>901 = Amber</div> <div>902 = Designer White Opaque</div> <div>911 = Warm Brick</div> <div>929 = Nutmeg</div> <div>937 = Bark</div> <div>984 = Dark Roast</div> <div>993 = Sumatra</div> <div>Curated Finishes: +\$50</div> <div>150 = Conifer Opaque</div> <div>151 = Blue Ridge Opaque</div> <div>152 = Cameo Opaque</div> <div>153 = Cordovan Opaque</div> <div>154 = Bittersweet Opaque</div>
HTF50501S-2220	Top	Base

HTF50501S-2220.Top.Base Example: HTF50501S-2220.W.AH400

HBF Occasional Tables

Frame Coffee Table



Ash Base
Round Inset Top
Shelf
Quick Ship Program



Style Number	Top Description	List Price	OH	DIA	Shipping Weight	Cube
HTF50501R-1742	wood	3716	17	42 ⁷ / ₁₆	81	34

level® Certified
SCS Indoor Advantage™ Certified

PLEASE SPECIFY THE FOLLOWING TO ORDER: _____

MODEL NUMBER	TOP	SPECIES & FINISH
	Indicate top: <div>W = Wood</div> <div>GCL = Clear Glass</div> <div>+\$1571</div>	Options for wood finishes: AH = Ash <div>Core Finishes:</div> <div>310 = Smoke Opaque</div> <div>400 = Clear +\$244</div> <div>402 = Black Opaque</div> <div>403 = Grey Opaque</div> <div>404 = Warm White Opaque</div> <div>405 = Mist Opaque</div> <div>406 = Denim Opaque</div> <div>407 = Pewter Opaque</div> <div>408 = Peppercorn Opaque</div> <div>901 = Amber</div> <div>902 = Designer White Opaque</div> <div>911 = Warm Brick</div> <div>929 = Nutmeg</div> <div>937 = Bark</div> <div>984 = Dark Roast</div> <div>993 = Sumatra</div> <div>Curated Finishes: +\$50</div> <div>150 = Conifer Opaque</div> <div>151 = Blue Ridge Opaque</div> <div>152 = Cameo Opaque</div> <div>153 = Cordovan Opaque</div> <div>154 = Bittersweet Opaque</div>

HTF50501R-1742.Top.Base Example: HTF50501R-1742.GCL.AH400

HBF Occasional Tables

Harmoni Occasional Table Series Specifications

Height	Coffee Table
Shape	Oval
Wood	Solid Ash

Harmoni Coffee Table



Style Number	Top Description	List Price	OH	OW	OD	Shipping Weight	Cube
HTS41701V-202860	wood	4950	20	60	28		

Ash
Oval Top

level® Certified Pending
SCS Indoor Advantage™ Certified Pending

PLEASE SPECIFY THE FOLLOWING TO ORDER:

MODEL NUMBER	SPECIES & FINISH
	Options for wood finishes: AH = Ash
	<div> <div>Core Finishes:</div> <div> <div>310</div> <div>= Smoke Opaque</div> </div> <div> <div>400</div> <div>= Clear</div> </div> <div> <div>402</div> <div>= Black Opaque</div> </div> <div> <div>403</div> <div>= Grey Opaque</div> </div> <div> <div>404</div> <div>= Warm White Opaque</div> </div> <div> <div>405</div> <div>= Mist Opaque</div> </div> <div> <div>406</div> <div>= Denim Opaque</div> </div> <div> <div>407</div> <div>= Pewter Opaque</div> </div> <div> <div>408</div> <div>= Peppercorn Opaque</div> </div> <div> <div>901</div> <div>= Amber</div> </div> <div> <div>902</div> <div>= Designer White Opaque</div> </div> <div> <div>911</div> <div>= Warm Brick</div> </div> <div> <div>929</div> <div>= Nutmeg</div> </div> <div> <div>937</div> <div>= Bark</div> </div> <div> <div>984</div> <div>= Dark Roast</div> </div> <div> <div>993</div> <div>= Sumatra</div> </div> </div> <div> <div>Curated Finishes: +\$50</div> <div> <div>150</div> <div>= Conifer Opaque</div> </div> <div> <div>151</div> <div>= Blue Ridge Opaque</div> </div> <div> <div>152</div> <div>= Cameo Opaque</div> </div> <div> <div>153</div> <div>= Cordovan Opaque</div> </div> <div> <div>154</div> <div>= Bittersweet Opaque</div> </div> </div>

HTS41701V-202860.Finish Example: HTS41701V-202860.AH400

HBF Occasional Tables

Harmoni Occasional Table Series Specifications

Height	Coffee Table
Shape	Oval
Wood	Solid Ash

Harmoni Coffee Table



Style Number	Top Description	List Price	OH	OW	OD	Shipping Weight	Cube
HTS41701V-204260	wood	6560	20	60	42		

Ash
Oval Top

level® Certified Pending
SCS Indoor Advantage™ Certified Pending

PLEASE SPECIFY THE FOLLOWING TO ORDER:

MODEL NUMBER	SPECIES & FINISH
	Options for wood finishes: AH = Ash
	Core Finishes:
	310 = Smoke Opaque
	400 = Clear
	402 = Black Opaque
	403 = Grey Opaque
	404 = Warm White Opaque
	405 = Mist Opaque
	406 = Denim Opaque
	407 = Pewter Opaque
	408 = Peppercorn Opaque
	901 = Amber
	902 = Designer White Opaque
	911 = Warm Brick
	929 = Nutmeg
	937 = Bark
	984 = Dark Roast
	993 = Sumatra

Curated Finishes: +\$50
150 = Conifer Opaque
151 = Blue Ridge Opaque
152 = Cameo Opaque
153 = Cordovan Opaque
154 = Bittersweet Opaque


HTS41701V-204260.Finish Example: HTS41701V-204260.AH400

HBF Occasional Tables

Lens Table Series Specifications

Surfaces	Wood Inset Glass Solid Surface <p>Lens inset top and shelf surfaces are 3/4" thick.</p> <p>Solid surface inset tops and shelves are 3/4" thick.</p> <p>Solid Surface Care Kits ship with each order. Additional kits available for \$54 List per kit.</p> <p>Lens may be combined with veneer or solid surface shelves.</p>
Glass	1/2" thick Glass
Shape	Round
Base	Brushed Stainless Steel

Lens Table

	<i>Style Number</i>	<i>Top Description</i>	<i>List Price</i>	<i>OH</i>	<i>DIA</i>	<i>Shipping Weight</i>	<i>Cube</i>
	HTL51201R-2218	wood, maple	1981	22¼	18	30	8.7
	<div> <div>Shelf: Solid Surface, Standard Color Upcharge: Add \$175 List</div> <div>Shelf: Solid Surface, Premium Colors Upcharge: Add \$200 List</div> </div>						

Brushed Stainless
Steel Base
Shelf

level® Certified
SCS Indoor Advantage™ Certified

PLEASE SPECIFY THE FOLLOWING TO ORDER:

MODEL NUMBER	TOP	FINISH	SHELF	SHELF FINISH
	Indicate top:	Options for wood finishes: NE = Maple	Indicate shelf:	Options for shelf finishes:
	NE = Maple	215 = Medium Brown Cherry	NE = Maple	See finishes listed at left for
	G = Glass	230 = Mocha	S = Solid Surface	Maple (NE), and Solid
	S = Solid Surface	284 = Chicory Cherry		Surface (S) finishes.
		293 = Chestnut Cherry		
		331 = Dark Rift Oak		
		511 = Dark Red Cherry		
		601 = Light Roast Walnut		
		615 = Coffee Walnut		
		629 = Nutmeg Walnut		
		637 = Charcoal Grey Walnut		
		684 = Dark Roast Walnut		
		693 = Sumatra Walnut		
		701 = Light Cherry		
		706 = Wheat Cherry		
		744 = Canyon Cherry		
		777 = Burnished Cherry		
		800 = Natural Maple		
		873 = Honey Maple		
		Finish options for glass: G = Glass +\$150		
		BPW = Designer White (back painted glass)		
		W11 = White (back painted glass)		
		BL1 = Black (back painted glass)		
		CG1 = Cool Grey(back painted glass)		
		WG1 = Warm Grey (back painted glass)		
		Options for solid surface: S = Solid Surface +\$200		
		AW = Alabaster White		
		Options for solid surfaces (premium): +\$230		
		DW1 = Designer White		
		CU1 = Cumulous		
		SN1 = Sandrift		

HTL51201R-2218.Top.Shelf Example: HTL51201R-2218.NE800.NE800

HBF Occasional Tables

November Occasional Table Series Specifications

Surfaces	Wood Glass Solid Surface
Glass	3/4” thick Glass
Solid Surfaces	Solid Surface Care Kits ship with each order. Additional kits available for \$54 List per kit.
Shape	Round
Base	Black Powder Coat Brushed Stainless Steel Polished Stainless Steel Ash

November Side Table



Style Number	Top Description	List Price	OH	DIA	Shipping Weight	Cube
HTN11301R-2220	wood	1535	22¼	20	90	18.4

Ash Base

level® Certified
SCS Indoor Advantage™ Certified

PLEASE SPECIFY THE FOLLOWING TO ORDER:

MODEL NUMBER	TOP	SPECIES & FINISH
	Indicate top: <div> <div>W</div> = Wood </div> <div> <div>G</div> = Glass </div> <div> <div>S</div> = Solid Surface </div>	<div>Options for wood finishes:</div> <div>AH = Ash</div> <div>Core Finishes:</div> <div> <div>310</div> = Smoke Opaque </div> <div> <div>400</div> = Clear </div> <div> <div>402</div> = Black Opaque </div> <div> <div>403</div> = Grey Opaque </div> <div> <div>404</div> = Warm White Opaque </div> <div> <div>405</div> = Mist Opaque </div> <div> <div>406</div> = Denim Opaque </div> <div> <div>407</div> = Pewter Opaque </div> <div> <div>408</div> = Peppercorn Opaque </div> <div> <div>901</div> = Amber </div> <div> <div>902</div> = Designer White Opaque </div> <div> <div>911</div> = Warm Brick </div> <div> <div>929</div> = Nutmeg </div> <div> <div>937</div> = Bark </div> <div> <div>984</div> = Dark Roast </div> <div> <div>993</div> = Sumatra </div> <div>Curated Finishes: +\$50</div> <div> <div>150</div> = Conifer Opaque </div> <div> <div>151</div> = Blue Ridge Opaque </div> <div> <div>152</div> = Cameo Opaque </div> <div> <div>153</div> = Cordovan Opaque </div> <div> <div>154</div> = Bittersweet Opaque </div> <div>Finish options for glass:</div> <div>G = Glass +\$115</div> <div> <div>BPW</div> = Designer White (back painted glass) </div> <div>Options for solid surface:</div> <div>S = Solid Surface +\$950</div> <div> <div>AW</div> = Alabaster White </div> <div>Options for solid surfaces (premium): +\$1000</div> <div> <div>DW1</div> = Designer White </div> <div> <div>CU1</div> = Cumulous </div> <div> <div>SN1</div> = Sandrift </div>

HTN11301R-2220.Top.Base Example: HTN11301R-2220.SDS.AH400

HBF Occasional Tables

November Coffee Table



Style Number	Top Description	List Price	OH	DIA	Shipping Weight	Cube
HTN11301R-1642	wood	2894	16⅜	42	90	24.5

Ash Base

level® Certified
SCS Indoor Advantage™ Certified

PLEASE SPECIFY THE FOLLOWING TO ORDER:

MODEL NUMBER	TOP	SPECIES & FINISH
	Indicate top: <div> <div>W</div> = Wood </div> <div> <div>G</div> = Glass </div> <div> <div>S</div> = Solid Surface </div>	<div>Options for wood finishes:</div> <div>AH = Ash</div> <div>Core Finishes:</div> <div> <div>310</div> = Smoke Opaque </div> <div> <div>400</div> = Clear </div> <div> <div>402</div> = Black Opaque </div> <div> <div>403</div> = Grey Opaque </div> <div> <div>404</div> = Warm White Opaque </div> <div> <div>405</div> = Mist Opaque </div> <div> <div>406</div> = Denim Opaque </div> <div> <div>407</div> = Pewter Opaque </div> <div> <div>408</div> = Peppercorn Opaque </div> <div> <div>901</div> = Amber </div> <div> <div>902</div> = Designer White Opaque </div> <div> <div>911</div> = Warm Brick </div> <div> <div>929</div> = Nutmeg </div> <div> <div>937</div> = Bark </div> <div> <div>984</div> = Dark Roast </div> <div> <div>993</div> = Sumatra </div> <div>Curated Finishes: +\$50</div> <div> <div>150</div> = Conifer Opaque </div> <div> <div>151</div> = Blue Ridge Opaque </div> <div> <div>152</div> = Cameo Opaque </div> <div> <div>153</div> = Cordovan Opaque </div> <div> <div>154</div> = Bittersweet Opaque </div> <div>Finish options for glass:</div> <div>G = Glass +\$225</div> <div> <div>BPW</div> = Designer White (back painted glass) </div> <div>Options for solid surface:</div> <div>S = Solid Surface +\$1825</div> <div> <div>AW</div> = Alabaster White </div> <div>Options for solid surfaces (premium): +\$2075</div> <div> <div>DW1</div> = Designer White </div> <div> <div>CU1</div> = Cumulous </div> <div> <div>SN1</div> = Sandrift </div>

HTN11301R-1642.Top.Base Example: HTN11301R-1642.GBPW.AH400

HBF Occasional Tables

November Side Table



Style Number	Top Description	List Price	OH	DIA	Shipping Weight	Cube
HTN11302R-2220	wood	1689	22¼	20	27	18

Black Powder Coat Base

level® Certified
SCS Indoor Advantage™ Certified

PLEASE SPECIFY THE FOLLOWING TO ORDER:

MODEL NUMBER	TOP	SPECIES & FINISH	BASE FINISH
	<p>Indicate top:</p> <p> W = Wood G = Glass S = Solid Surface </p>	<p>Options for wood finishes:</p> <p>AH = Ash</p> <p>Core Finishes:</p> <p> 310 = Smoke Opaque 400 = Clear 402 = Black Opaque 403 = Grey Opaque 404 = Warm White Opaque 405 = Mist Opaque 406 = Denim Opaque 407 = Pewter Opaque 408 = Peppercorn Opaque 901 = Amber 902 = Designer White Opaque 911 = Warm Brick 929 = Nutmeg 937 = Bark 984 = Dark Roast 993 = Sumatra </p> <p>Curated Finishes: +\$50</p> <p> 150 = Conifer Opaque 151 = Blue Ridge Opaque 152 = Cameo Opaque 153 = Cordovan Opaque 154 = Bittersweet Opaque </p>	<p>Options for metal finish:</p> <p> BL = Black Powder Coat BSS = Brushed Stainless Steel +\$100 PSS = Polished Stainless Steel +\$200 W1 = White Powder Coat </p>
		<p>Finish options for glass:</p> <p>G = Glass +\$115</p> <p>BPW = Designer White (back painted glass)</p> <p>Options for solid surface:</p> <p>S = Solid Surface +\$950</p> <p>AW = Alabaster White</p> <p>Options for solid surfaces (premium): +\$1000</p> <p> DW1 = Designer White CU1 = Cumulous SN1 = Sandrift </p>	

HTN11302R-2220.Top.Base Example: HTN11302R-2220.AH400.BL

HBF Occasional Tables

November Side Table



Style Number	Top Description	List Price	OH	DIA	Shipping Weight	Cube
HTN11302R-1642	wood	3184	16%	42	90	24.5

Black Powder Coat Base

level* Certified
SCS Indoor Advantage™ Certified

PLEASE SPECIFY THE FOLLOWING TO ORDER:

MODEL NUMBER	TOP	SPECIES & FINISH	BASE FINISH
	Indicate top: <div> <div>W</div> = Wood <div>G</div> = Glass <div>S</div> = Solid Surface </div>	Options for wood finishes: AH = Ash Core Finishes: <div> <div>310</div> = Smoke Opaque <div>400</div> = Clear <div>402</div> = Black Opaque <div>403</div> = Grey Opaque <div>404</div> = Warm White Opaque <div>405</div> = Mist Opaque <div>406</div> = Denim Opaque <div>407</div> = Pewter Opaque <div>408</div> = Peppercorn Opaque <div>901</div> = Amber <div>902</div> = Designer White Opaque <div>911</div> = Warm Brick <div>929</div> = Nutmeg <div>937</div> = Bark <div>984</div> = Dark Roast <div>993</div> = Sumatra </div> Curated Finishes: +\$50 <div> <div>150</div> = Conifer Opaque <div>151</div> = Blue Ridge Opaque <div>152</div> = Cameo Opaque <div>153</div> = Cordovan Opaque <div>154</div> = Bittersweet Opaque </div>	Options for metal finish: <div> <div>BL</div> = Black Powder Coat <div>BSS</div> = Brushed Stainless Steel +\$100 <div>PSS</div> = Polished Stainless Steel +\$200 <div>W1</div> = White Powder Coat </div>
		Finish options for glass: G = Glass +\$225 <div>BPW</div> = Designer White (back painted glass) Options for solid surface: S = Solid Surface +\$1825 <div>AW</div> = Alabaster White Options for solid surfaces (premium): +\$2075 <div>DW1</div> = Designer White <div>CU1</div> = Cumulous <div>SN1</div> = Sandrift	

HTN11302R-1642.Top.Base Example: HTN11302R-1642.AH400.BL

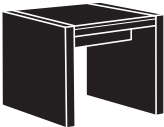
HBF Occasional Tables

Parker Occasional Table Series Specifications

Collection Details	Side Coffee Console
	Bar Height Counter Height
Surfaces	Wood Solid Surface Engineered Stone - Quartz
Wood	Ash Walnut Painted Wood
	Painted wood finishes are available in White and Grey

NOTE: Tables ship fully assembled.

Parker Side Table



Style Number	Top Description	List Price	OH	OW	OD	Shipping Weight	Cube
HTP31501S-2124	wood	2161	21	24	24	190	15.4

Note: Shipping Weight is 190 lbs for the solid surface top option

Note: Shipping Weight is 250 lbs for the engineered stone / quartz top option

Ash or walnut wood base
Square top

PLEASE SPECIFY THE FOLLOWING TO ORDER:

MODEL NUMBER	TOP	TOP MATERIALS FINISH			BASE	BASE FINISH:
	Indicate top:	Options for wood finishes: AH = Ash	Options for wood finishes: NT = Walnut	Options for solid surface: S = Solid Surface +\$401	Options for base wood type:	Options for base finish:
	AH = Ash NT = Walnut S = Solid Surface EQ = Engineered Quartz WP = Painted Wood	Core Finishes: 310 = Smoke Opaque 400 = Clear 402 = Black Opaque 403 = Grey Opaque 404 = Warm White Opaque 405 = Mist Opaque 406 = Denim Opaque 407 = Pewter Opaque 408 = Peppercorn Opaque 901 = Amber 902 = Designer White Opaque 911 = Warm Brick 929 = Nutmeg 937 = Bark 984 = Dark Roast 993 = Sumatra	Core Finishes: 310 = Smoke Opaque 400 = Clear 402 = Black Opaque 403 = Grey Opaque 404 = Warm White Opaque 405 = Mist Opaque 406 = Denim Opaque 407 = Pewter Opaque 408 = Peppercorn Opaque 902 = Designer White Opaque 911 = Warm Brick 929 = Nutmeg 937 = Bark 984 = Dark Roast 993 = Sumatra	Options for solid surface: AW = Alabaster White Options for solid surfaces (premium): +\$550 DW1 = Designer White CU1 = Cumulous SN1 = Sandrift Options for engineered stone quartz: +\$1246 EQ = Engineered Quartz TX1 = Tuxedo DW1 = Designer White CC1 = Concrete CU1 = Cumulous ST1 = Storm Grey PP1 = Peppercorn SG = Smoke Grey Options for painted wood: WP = Painted Wood DW = Dove White High Gloss GR = Graphite High Gloss	AH = Ash NT = Walnut WP = Painted Wood	See finishes listed at left for Ash (AH), Walnut (NT), and Painted Wood (WP) finishes.
		Curated Finishes: +\$50 150 = Conifer Opaque 151 = Blue Ridge Opaque 152 = Cameo Opaque 153 = Cordovan Opaque 154 = Bittersweet Opaque	Curated Finishes: +\$50 150 = Conifer Opaque 151 = Blue Ridge Opaque 152 = Cameo Opaque 153 = Cordovan Opaque 154 = Bittersweet Opaque			

HTP31501S-2124.Top.Base Example: HTP31501S-2124.SAW.AH400

HBF Occasional Tables

Parker Coffee Table



Style Number	Top Description	List Price	OH	OW	OD	Shipping Weight	Cube
HTP31501S-1642	wood	3232	16	42	42	380	38

Note: Shipping Weight is 380 lbs for the solid surface top option

Note: Shipping Weight is 500 lbs for the engineered stone / quartz top option

Ash or walnut wood base
Square top

PLEASE SPECIFY THE FOLLOWING TO ORDER:

MODEL NUMBER	TOP	TOP MATERIALS FINISH			BASE	BASE FINISH:
	Indicate top:	Options for wood finishes: AH = Ash	Options for wood finishes: NT = Walnut	Options for solid surface: S = Solid Surface +\$1091	Options for base wood type:	Options for base finish:
	AH = Ash	Core Finishes:	Core Finishes:	AW = Alabaster White	AH = Ash	See finishes listed at left
	NT = Walnut	310 = Smoke Opaque	310 = Smoke Opaque		NT = Walnut	for Ash (AH), Walnut
	S = Solid Surface	400 = Clear	400 = Clear	Options for solid surfaces (premium): +\$1339		(NT), and Painted
	EQ = Engineered Quartz	402 = Black Opaque	402 = Black Opaque	DW1 = Designer White	WP = Painted Wood	Wood (WP) finishes.
	WP = Painted Wood	403 = Grey Opaque	403 = Grey Opaque	CU1 = Cumulous		
		404 = Warm White Opaque	404 = Warm White Opaque	SN1 = Sandrift		
		405 = Mist Opaque	405 = Mist Opaque	Options for engineered stone quartz: +\$2911		
		406 = Denim Opaque	406 = Denim Opaque	EQ = Engineered Quartz		
		407 = Pewter Opaque	407 = Pewter Opaque	TX1 = Tuxedo		
		408 = Peppercorn Opaque	408 = Peppercorn Opaque	DW1 = Designer White		
		901 = Amber	902 = Designer White Opaque	CC1 = Concrete		
		902 = Designer White Opaque	911 = Warm Brick	CU1 = Cumulous		
		911 = Warm Brick	929 = Nutmeg	ST1 = Storm Grey		
		929 = Nutmeg	937 = Bark	PP1 = Peppercorn		
		937 = Bark	984 = Dark Roast	SG = Smoke Grey		
		984 = Dark Roast	993 = Sumatra			
		993 = Sumatra				
		Curated Finishes: +\$50	Curated Finishes: +\$50			
		150 = Conifer Opaque	150 = Conifer Opaque	Options for painted wood:		
		151 = Blue Ridge Opaque	151 = Blue Ridge Opaque	WP = Painted Wood		
		152 = Cameo Opaque	152 = Cameo Opaque	DW = Dove White		
		153 = Cordovan Opaque	153 = Cordovan Opaque	High Gloss		
		154 = Bittersweet Opaque	154 = Bittersweet Opaque	GR = Graphite		
				High Gloss		

HTP31501S-1642.Top.Base Example: HTP31501S-1642.SAW.AH400

HBF Occasional Tables

Parker Coffee Table



Style Number	Top Description	List Price	OH	OW	OD	Shipping Weight	Cube
HTP31501E-165630	wood	3232	16	56	30	370	34.27

Note: Shipping Weight is 380 lbs for the solid surface top option

Note: Shipping Weight is 450 lbs for the engineered stone / quartz top option

Ash or walnut wood base
Rectangular top

PLEASE SPECIFY THE FOLLOWING TO ORDER:

MODEL NUMBER	TOP	TOP MATERIALS FINISH			BASE	BASE FINISH:
	Indicate top:	Options for wood finishes: AH = Ash	Options for wood finishes: NT = Walnut	Options for solid surface: S = Solid Surface +\$733	Options for base wood type:	Options for base finish:
	AH = Ash	Core Finishes:	Core Finishes:	AW = Alabaster White	AH = Ash	See finishes listed at left
	NT = Walnut	310 = Smoke Opaque	310 = Smoke Opaque	Options for solid surfaces (premium): +\$1164	NT = Walnut	for Ash (AH), Walnut (NT), and Painted Wood (WP) finishes.
	S = Solid Surface	400 = Clear	400 = Clear	DW1 = Designer White	WP = Painted Wood	
	EQ = Engineered Quartz	402 = Black Opaque	402 = Black Opaque	CU1 = Cumulous		
	WP = Painted Wood	403 = Grey Opaque	403 = Grey Opaque	SN1 = Sandrift		
		404 = Warm White Opaque	404 = Warm White Opaque	Options for engineered stone quartz: +\$2025		
		405 = Mist Opaque	405 = Mist Opaque	EQ = Engineered Quartz		
		406 = Denim Opaque	406 = Denim Opaque	TX1 = Tuxedo		
		407 = Pewter Opaque	407 = Pewter Opaque	DW1 = Designer White		
		408 = Peppercorn Opaque	408 = Peppercorn Opaque	CC1 = Concrete		
		901 = Amber	902 = Designer White Opaque	CU1 = Cumulous		
		902 = Designer White Opaque	911 = Warm Brick	ST1 = Storm Grey		
		911 = Warm Brick	929 = Nutmeg	PP1 = Peppercorn		
		929 = Nutmeg	937 = Bark	SG = Smoke Grey		
		937 = Bark	984 = Dark Roast			
		984 = Dark Roast	993 = Sumatra			
		993 = Sumatra				
		Curated Finishes: +\$50	Curated Finishes: +\$50	Options for painted wood:		
		150 = Conifer Opaque	150 = Conifer Opaque	WP = Painted Wood		
		151 = Blue Ridge Opaque	151 = Blue Ridge Opaque	DW = Dove White		
		152 = Cameo Opaque	152 = Cameo Opaque	High Gloss		
		153 = Cordovan Opaque	153 = Cordovan Opaque	GR = Graphite		
		154 = Bittersweet Opaque	154 = Bittersweet Opaque	High Gloss		

HTP31501E-165630.Top.Base Example: HTP31501E-165630.SAW.AH400

HBF Occasional Tables

Parker Console Table



Style Number	Top Description	List Price	OH	OW	OD	Shipping Weight	Cube
HTP31501E-266018	wood	3131	26	60	18	275	28.9
<div>Note: Shipping Weight is 275 lbs for the solid surface top option</div>		<div>Note: Shipping Weight is 330 lbs for the engineered stone / quartz top option</div>					

Ash or walnut wood base
Rectangular top

PLEASE SPECIFY THE FOLLOWING TO ORDER:

MODEL NUMBER	TOP	TOP MATERIALS FINISH			BASE	BASE FINISH:
	Indicate top:	Options for wood finishes: AH = Ash	Options for wood finishes: NT = Walnut	Options for solid surface: S = Solid Surface +\$819	Options for base wood type:	Options for base finish:
	<div>AH = Ash</div> <div>NT = Walnut</div> <div>S = Solid Surface</div> <div>EQ = Engineered Quartz</div> <div>WP = Painted Wood</div>	<div>Core Finishes:</div> <div>310 = Smoke Opaque</div> <div>400 = Clear</div> <div>402 = Black Opaque</div> <div>403 = Grey Opaque</div> <div>404 = Warm White Opaque</div> <div>405 = Mist Opaque</div> <div>406 = Denim Opaque</div> <div>407 = Pewter Opaque</div> <div>408 = Peppercorn Opaque</div> <div>901 = Amber</div> <div>902 = Designer White Opaque</div> <div>911 = Warm Brick</div> <div>929 = Nutmeg</div> <div>937 = Bark</div> <div>984 = Dark Roast</div> <div>993 = Sumatra</div> <div>Curated Finishes: +\$50</div> <div>150 = Conifer Opaque</div> <div>151 = Blue Ridge Opaque</div> <div>152 = Cameo Opaque</div> <div>153 = Cordovan Opaque</div> <div>154 = Bittersweet Opaque</div>	<div>Core Finishes:</div> <div>310 = Smoke Opaque</div> <div>400 = Clear</div> <div>402 = Black Opaque</div> <div>403 = Grey Opaque</div> <div>404 = Warm White Opaque</div> <div>405 = Mist Opaque</div> <div>406 = Denim Opaque</div> <div>407 = Pewter Opaque</div> <div>408 = Peppercorn Opaque</div> <div>902 = Designer White Opaque</div> <div>911 = Warm Brick</div> <div>929 = Nutmeg</div> <div>937 = Bark</div> <div>984 = Dark Roast</div> <div>993 = Sumatra</div> <div>Curated Finishes: +\$50</div> <div>150 = Conifer Opaque</div> <div>151 = Blue Ridge Opaque</div> <div>152 = Cameo Opaque</div> <div>153 = Cordovan Opaque</div> <div>154 = Bittersweet Opaque</div>	<div>Options for solid surface:</div> <div>AW = Alabaster White</div> <div>Options for solid surfaces (premium): +\$1250</div> <div>DW1 = Designer White</div> <div>CU1 = Cumulous</div> <div>SN1 = Sandrift</div> <div>Options for engineered stone quartz: +\$2072</div> <div>EQ = Engineered Quartz</div> <div>TX1 = Tuxedo</div> <div>DW1 = Designer White</div> <div>CC1 = Concrete</div> <div>CU1 = Cumulous</div> <div>ST1 = Storm Grey</div> <div>PP1 = Peppercorn</div> <div>SG = Smoke Grey</div> <div>Options for painted wood:</div> <div>WP = Painted Wood</div> <div>DW = Dove White</div> <div>High Gloss</div> <div>GR = Graphite</div> <div>High Gloss</div>	<div>AH = Ash</div> <div>NT = Walnut</div> <div>WP = Painted Wood</div>	<div>See finishes listed at left for Ash (AH), Walnut (NT), and Painted Wood (WP) finishes.</div>

HTP31501E-266018.Top.Base Example: HTP31501E-266018.SAW.AH400

HBF Occasional Tables

Parker Console Table



Style Number	Top Description	List Price	OH	OW	OD	Shipping Weight	Cube
HTP31501E-367218	wood	3308	36	72	18	328	42.8
<div>Note: Shipping Weight is 328 lbs for the solid surface top option</div>		<div>Note: Shipping Weight is 383 lbs for the engineered stone / quartz top option</div>					

Ash or walnut wood base
Rectangular top

PLEASE SPECIFY THE FOLLOWING TO ORDER:

MODEL NUMBER	TOP	TOP MATERIALS FINISH			BASE	BASE FINISH:
	Indicate top:	Options for wood finishes: AH = Ash	Options for wood finishes: NT = Walnut	Options for solid surface: S = Solid Surface +\$895	Options for base wood type:	Options for base finish:
	<div>AH = Ash</div> <div>NT = Walnut</div> <div>S = Solid Surface</div> <div>EQ = Engineered Quartz</div> <div>WP = Painted Wood</div>	<div>Core Finishes:</div> <div>310 = Smoke Opaque</div> <div>400 = Clear</div> <div>402 = Black Opaque</div> <div>403 = Grey Opaque</div> <div>404 = Warm White Opaque</div> <div>405 = Mist Opaque</div> <div>406 = Denim Opaque</div> <div>407 = Pewter Opaque</div> <div>408 = Peppercorn Opaque</div> <div>901 = Amber</div> <div>902 = Designer White Opaque</div> <div>911 = Warm Brick</div> <div>929 = Nutmeg</div> <div>937 = Bark</div> <div>984 = Dark Roast</div> <div>993 = Sumatra</div> <div>Curated Finishes: +\$50</div> <div>150 = Conifer Opaque</div> <div>151 = Blue Ridge Opaque</div> <div>152 = Cameo Opaque</div> <div>153 = Cordovan Opaque</div> <div>154 = Bittersweet Opaque</div>	<div>Core Finishes:</div> <div>310 = Smoke Opaque</div> <div>400 = Clear</div> <div>402 = Black Opaque</div> <div>403 = Grey Opaque</div> <div>404 = Warm White Opaque</div> <div>405 = Mist Opaque</div> <div>406 = Denim Opaque</div> <div>407 = Pewter Opaque</div> <div>408 = Peppercorn Opaque</div> <div>902 = Designer White Opaque</div> <div>911 = Warm Brick</div> <div>929 = Nutmeg</div> <div>937 = Bark</div> <div>984 = Dark Roast</div> <div>993 = Sumatra</div> <div>Curated Finishes: +\$50</div> <div>150 = Conifer Opaque</div> <div>151 = Blue Ridge Opaque</div> <div>152 = Cameo Opaque</div> <div>153 = Cordovan Opaque</div> <div>154 = Bittersweet Opaque</div>	<div>Options for solid surface:</div> <div>AW = Alabaster White</div> <div>Options for solid surfaces (premium): +\$1326</div> <div>DW1 = Designer White</div> <div>CU1 = Cumulous</div> <div>SN1 = Sandrift</div> <div>Options for engineered stone quartz: +\$2307</div> <div>EQ = Engineered Quartz</div> <div>TX1 = Tuxedo</div> <div>DW1 = Designer White</div> <div>CC1 = Concrete</div> <div>CU1 = Cumulous</div> <div>ST1 = Storm Grey</div> <div>PP1 = Peppercorn</div> <div>SG = Smoke Grey</div> <div>Options for painted wood:</div> <div>WP = Painted Wood</div> <div>DW = Dove White</div> <div>High Gloss</div> <div>GR = Graphite</div> <div>High Gloss</div>	<div>AH = Ash</div> <div>NT = Walnut</div> <div>WP = Painted Wood</div>	<div>See finishes listed at left for Ash (AH), Walnut (NT), and Painted Wood (WP) finishes.</div>

HTP31501E-367218.Top.Base Example: HTP31501E-367218.SAW.AH400

HBF Occasional Tables

Slice Occasional Table Series Specifications

Surfaces	Wood Solid Surface
Table Tops	Slice tables are available in flat cut maple veneer. Solid surface material is available only on the 24” diameter occasional table and the 42” diameter coffee table.
Solid Surfaces	Solid Surface tops are 1 3/4” thick. Solid Surface Care Kits ship with each order. Additional kits available for \$54 List per kit.
Shape	Round Oval
Bases	Wood

Slice Table



Style Number	Top Description	List Price	OH	DIA	Shipping Weight	Cube
HTS10501R-2224	wood	1907	22½	24	40	18

Quick Ship Program | Ash Base; Ash or Designer White Solid Surface Top Only



Ash Base
Round Top

level® Certified
SCS Indoor Advantage™ Certified

PLEASE SPECIFY THE FOLLOWING TO ORDER:

MODEL NUMBER	TOP	SPECIES & FINISH
	Indicate top: <div>AH = Ash</div> <div>S = Solid Surface</div>	Options for wood finishes: AH = Ash <div>Core Finishes:</div> <div>310 = Smoke Opaque</div> <div>400 = Clear +\$257</div> <div>402 = Black Opaque</div> <div>403 = Grey Opaque</div> <div>404 = Warm White Opaque</div> <div>405 = Mist Opaque</div> <div>406 = Denim Opaque</div> <div>407 = Pewter Opaque</div> <div>408 = Peppercorn Opaque</div> <div>901 = Amber</div> <div>902 = Designer White Opaque</div> <div>911 = Warm Brick</div> <div>929 = Nutmeg</div> <div>937 = Bark</div> <div>984 = Dark Roast</div> <div>993 = Sumatra</div> <div>Curated Finishes: +\$50</div> <div>150 = Conifer Opaque</div> <div>151 = Blue Ridge Opaque</div> <div>152 = Cameo Opaque</div> <div>153 = Cordovan Opaque</div> <div>154 = Bittersweet Opaque</div> <div>Options for solid surface:</div> <div>S = Solid Surface +\$625</div> <div>AW = Alabaster White</div> <div>Options for solid surfaces (premium): +\$950</div> <div>DW1 = Designer White</div> <div>CU1 = Cumulous</div> <div>SN1 = Sandrift</div>

HTS10501R-2224.Top.Base Example: HTS10501R-2224.W.AH400

HBF Occasional Tables

Slice Table



Style Number	Top Description	List Price	OH	DIA	Shipping Weight	Cube
HTS10501R-2218	wood	1713	22½	18	25	8.7

Ash Base
Round Top

level* Certified
SCS Indoor Advantage™ Certified

PLEASE SPECIFY THE FOLLOWING TO ORDER:

MODEL NUMBER	SPECIES & FINISH
	Options for wood finishes: AH = Ash
	Core Finishes:
	310 = Smoke Opaque
	400 = Clear +\$257
	402 = Black Opaque
	403 = Grey Opaque
	404 = Warm White Opaque
	405 = Mist Opaque
	406 = Denim Opaque
	407 = Pewter Opaque
	408 = Peppercorn Opaque
	901 = Amber
	902 = Designer White Opaque
	911 = Warm Brick
	929 = Nutmeg
	937 = Bark
	984 = Dark Roast
	993 = Sumatra
	Curated Finishes: +\$50
	150 = Conifer Opaque
	151 = Blue Ridge Opaque
	152 = Cameo Opaque
	153 = Cordovan Opaque
	154 = Bittersweet Opaque

HTS10501R-2218.Top.Base Example: HTS10501R-2218.W.AH400

HBF Occasional Tables

Trestle Table Series Specifications

Surfaces	Wood Solid Surface <p>Veneer top is 1/2" thick. Shelf is 3/4" thick.</p> <p>Solid surface tops are 1/2" thick and rest upon a 3/4" thick maple subtop.</p> <p>Solid Surface Care Kits ship with each order. Additional kits available for \$54 List per kit.</p>
----------	--

Shape	Round
Base	Wood

Trestle Table



Oak Base
Round Top
Shelf

Style Number	Top Description	List Price	OH	DIA	Shipping Weight	Cube
HTR31201R-2222	wood	1850	22	22	34	18

Note: Shipping Weight is 55 lbs for the solid surface top option

level® Certified
SCS Indoor Advantage™ Certified

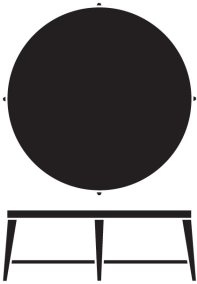
PLEASE SPECIFY THE FOLLOWING TO ORDER:

MODEL NUMBER	TOP	SPECIES & FINISH	
	Indicate top:	Options for wood finishes: RK = Oak	Options for solid surface: S = Solid Surface +\$1226
	W = Wood S = Solid Surface	Core Finishes: 310 = Smoke Opaque 400 = Clear 402 = Black Opaque 403 = Grey Opaque 404 = Warm White Opaque 405 = Mist Opaque 406 = Denim Opaque 407 = Pewter Opaque 408 = Peppercorn Opaque 901 = Amber 902 = Designer White Opaque 911 = Warm Brick 929 = Nutmeg 937 = Bark 984 = Dark Roast 993 = Sumatra	AW = Alabaster White Options for solid surfaces (premium): +\$1263 DW1 = Designer White CU1 = Cumulous SN1 = Sandrift
		Curated Finishes: +\$50 150 = Conifer Opaque 151 = Blue Ridge Opaque 152 = Cameo Opaque 153 = Cordovan Opaque 154 = Bittersweet Opaque	

HTR31201R-2222.Top Example: HTR31201R-2222.RK400

HBF Occasional Tables

Trestle Coffee Table



*Oak Base
Round Top
Shelf*

level® Certified

<i>Style Number</i>	<i>Top Description</i>	<i>List Price</i>	<i>OH</i>	<i>DIA</i>	<i>Shipping Weight</i>	<i>Cube</i>
HTR31201R-1644	<i>wood</i>	3089	16	44	94	33

Note: Shipping Weight is 233 lbs for the solid surface top option

PLEASE SPECIFY THE FOLLOWING TO ORDER:

MODEL NUMBER	TOP	SPECIES & FINISH
	Indicate top:	Options for wood finishes: RK = Oak
	W = Wood S = Solid Surface	Core Finishes: 310 = Smoke Opaque 400 = Clear 402 = Black Opaque 403 = Grey Opaque 404 = Warm White Opaque 405 = Mist Opaque 406 = Denim Opaque 407 = Pewter Opaque 408 = Peppercorn Opaque 901 = Amber 902 = Designer White Opaque 911 = Warm Brick 929 = Nutmeg 937 = Bark 984 = Dark Roast 993 = Sumatra
		Curated Finishes: +\$50 150 = Conifer Opaque 151 = Blue Ridge Opaque 152 = Cameo Opaque 153 = Cordovan Opaque 154 = Bittersweet Opaque
		Options for solid surface: S = Solid Surface +\$4902 AW = Alabaster White
		Options for solid surfaces (premium): +\$5012 DW1 = Designer White CU1 = Cumulous SN1 = Sandrift

HTR31201R-1644.Top *Example: HTR31201R-1644.RK400*

HBF Occasional Tables

Triscape Table Series Specifications

Surfaces	Wood Laminate Solid Surface <p>Solid surface tops are 1" thick. Standard in Alabaster White. Premium solid surface colors may be specified.</p> <p>Laminate and Solid Surfaces are SCS Indoor Advantage™ Certified.</p> <p>Solid surface care kits ship with each order. Additional kits available for \$54 list per kit.</p>
----------	---

Shape	Soft Triangle
-------	---------------

Base	Black Powder Coat Polished Stainless Steel White Powder Coat
------	--

Seating Disc	Upholstered
--------------	-------------

Triscape Table



Style Number	Top Description	List Price	OH	OW	OD	Shipping Weight	Cube
HTK61401T-154746	wood, laminate	2211	15¼	47¾	46⅝	90	39.1

Black Powder Coat Base	level* Certified
Soft Triangle Top	SCS Indoor Advantage™ Certified

PLEASE SPECIFY THE FOLLOWING TO ORDER:

MODEL NUMBER	TOP	FINISH		BASE FINISH
	Indicate top:	Options for laminate finishes:	Options for wood finishes:	Options for solid surface:
		PL = Laminate	AH = Ash	S = Solid Surface +\$3986
	AH = Ash	215 = Williamsburg Cherry	Core Finishes:	AW = Alabaster White
	PL = Laminate	511 = Empire Mahogany	310 = Smoke Opaque	
	S = Solid Surface	701 = Bourbon Cherry	400 = Clear +\$332	Options for solid surfaces
		800 = Natural Maple	402 = Black Opaque	(premium): +\$4065
		7933 = Cafelle	403 = Grey Opaque	
		7935 = Shaker Cherry	404 = Warm White Opaque	DW1 = Designer White
		7943 = Columbian Walnut	405 = Mist Opaque	CU1 = Cumulous
		7964 = Skyline Walnut	406 = Denim Opaque	SN1 = Sandrift
		7965 = Walnut Heights	407 = Pewter Opaque	
		BW = Beigewood	408 = Peppercorn Opaque	
		WP110 = Looks Likatre	901 = Amber	
		WP115 = Appears Likatre	902 = Designer White Opaque	
		WP120 = Leave Likatre	911 = Warm Brick	
		SW803 = Eggshell White	929 = Nutmeg	
		SW806 = Carnation White	937 = Bark	
		15034 = Loft - Grey Cloud	984 = Dark Roast	
		15037 = Cocoa Brown	993 = Sumatra	
		LLF = Greystone		
		WH = Designer White		
			Curated Finishes: +\$50	
			150 = Conifer Opaque	
			151 = Blue Ridge Opaque	
			152 = Cameo Opaque	
			153 = Cordovan Opaque	
			154 = Bittersweet Opaque	

HTK61401T-154746.Top.Base Example: HTK61401T-154746.AH400.BL

HBF Occasional Tables

Triscape Table



Style Number	Top Description	Sq. ft.	Yards	OH	OW	OD	Shipping Weight	Cube
HTK61401T-174746	wood, laminate, solid surface seating disc	13½	¾	17	47¾	46⅝	95	39.1

Black Powder Coat Base
Soft Triangle Top
Round Seating Disc

List Prices

COM	2343	Grade J	2376
COL	2418	Grade K	2393
Grade AA	2293	Grade L	2418
Grade A	2301	Grade M	2451
Grade B	2310	Leather I	2508
Grade C	2318	Leather II	2568
Grade D	2326	Leather III	2628
Grade E	2335	Leather IV	2688
Grade F	2345	Leather V	2748
Grade G	2356	Leather VI	2808
Grade H	2368		

Note: Shipping Weight is 328 lbs for the solid surface top option

PLEASE SPECIFY THE FOLLOWING TO ORDER:

MODEL NUMBER	TEXTILES	FLAMMABILITY	TOP	TOP MATERIALS FINISH		BASE FINISH
	Indicate fabric choice for cushions: See options for seat cushion fabrics at www.hbftextiles.com	Indicate flammability: U = Cal 117 U3 = Cal 133	Indicate top: AH = Ash PL = Laminate S = Solid Surface	Options for wood finishes: AH = Ash Core Finishes: 310 = Smoke Opaque 400 = Clear +\$332 402 = Black Opaque 403 = Grey Opaque 404 = Warm White Opaque 405 = Mist Opaque 406 = Denim Opaque 407 = Pewter Opaque 408 = Peppercorn Opaque 901 = Amber 902 = Designer White Opaque 911 = Warm Brick 929 = Nutmeg 937 = Bark 984 = Dark Roast 993 = Sumatra Curated Finishes: +\$50 150 = Conifer Opaque 151 = Blue Ridge Opaque 152 = Cameo Opaque 153 = Cordovan Opaque 154 = Bittersweet Opaque	Options for laminate finishes: PL = Laminate 215 = Williamsburg Cherry 511 = Empire Mahogany 701 = Bourbon Cherry 800 = Natural Maple 7933 = Cafelle 7935 = Shaker Cherry 7943 = Columbian Walnut 7964 = Skyline Walnut 7965 = Walnut Heights BW = Beigewood WP110 = Looks Likatre WP115 = Appears Likatre WP120 = Leave Likatre SW803 = Eggshell White SW806 = Carnation White 15034 = Loft - Grey Cloud 15037 = Cocoa Brown LLF = Greystone WH = Designer White Options for solid surface: S = Solid Surface +\$4043 AW = Alabaster White Options for solid surfaces (premium): +\$4122 DW1 = Designer White CU1 = Cumulous SN1 = Sandrift	Options for metal finish: BL = Black Powder Coat PSS = Polished Stainless Steel +\$100 W1 = White Powder Coat

HTK61401T-174746.Fabric.Flammability.Top.Base Example: HTK61401T-174746.922-10.U.AH400.BL