



Prices effective February 5, 2018

Published March 2018

The Intersect® Portfolio

Introduction	page 2
The Intersect® Portfolio	3
Tables	5
Idea Exchange	14
Screens	17
Celeste™ Seating	23
Caper® Stacking Chair	36
Indices	39
By Name	39
By Number	41
Appendices	
20-Day or Less/Assigned Lead-Time Order Information	
Customer's Own Material Order Information-Workspaces	
Proprietary Textiles Application Chart-Workspaces	
Proprietary Textile Colors-Workspaces	
Maharam® Application Chart-Workspaces	
Maharam Colors-Workspaces	
Casters and Glides	
Fire Retardancy-Seating	
Customer's Own Material/Customer's Own Leather Order Information-Seating	
Proprietary Textiles Application Chart-Seating	
Proprietary Textile Colors-Seating	
Maharam® Application Chart-Seating	
Maharam Colors-Seating	
For the latest materials information, refer to the Materials pages on HermanMiller.com.	

A Note on the Organization of This Book

There are a few signals that will help you understand the organization of this book. Once you know them, you should be able to find your way around easily.

Like a newspaper, this book is formatted with columns of text and illustrations that run vertically.

Information wraps from one column to the next and continues for as many pages as it needs to.

Black bars are clues.

A black bar at the top of a page signals the start of information about a product.

This information is divided into two sections, each signaled by a black bar. Product Information includes a description, additional notes, and dimensional drawings. Specification Information, which always begins at the top of a column, includes a series of steps. Each step represents a decision you need to make in order to complete your product number. Steps must be followed sequentially. The number of pages needed to complete information on a product varies; some will be complete in one page; others may fill three or four pages. Just continue going through the steps until you run into the next product, signaled by the black bar at the top of the page.

Black tabs running along the outside edge of the page help you locate what section you are in or what section you want to go to. You can thumb forwards or backwards to find a section; tabs and text appear on both sides of the page.

The additional pages in the back of the book include the appendices and indices. They are signaled by a long black bar running along the outside edge of the page.

The index is presented two ways.

The first index is in alphabetical order by product name. It can be helpful if you are new to the products and numbering scheme or if you are looking for a type of product, such as work chair or round table. The second index is by product number. It lists, in alphanumeric order, the base product number, typically a five-digit number.

General Information

This book is effective February 5, 2018, subject to change without notice. Products may be purchased from authorized Herman Miller dealers who will quote prices upon request. For more information about our products and services or to see a list of dealers, visit www.HermanMiller.com.


All prices are list prices. Additional services, such as planning services, design, storage, and installation, are not included and must be added to these prices when the additional services are requested.


Illustrations, specifications, and prices are based on the latest information at the time of publication. The right is reserved to make changes at any time without notice in prices, fabrics, finishes, materials, specifications, and models, and also to discontinue models and finishes.

Dimensions shown in the drawings are engineering drawing dimensions rounded up to the nearest 1/8". Product is shipped set up or knocked down. Products that include "Shipped knocked down" in the description require some assembly. If this statement does not appear in the description, the product is shipped assembled.

Service problems are normally handled by a Herman Miller authorized dealer. Where this cannot be accomplished on a local level, service problems should be referred to the Customer Care Representative for your region, Herman Miller, Inc., Zeeland, Michigan 49464.

20-Day or Less/Assigned Lead-Time Shipments

All products and options in this price book not designated by an Assigned Program icon  will ship in **20 business days or less** after being acknowledged by Herman Miller.

Products and options designated by an  are on the assigned lead-time program and may ship in 20 days, less than 20 days, or more than 20 days from order acknowledgement.

Tables

Idea Exchange

Screens

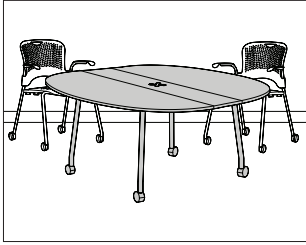
Celeste™ Seating

Caper® Stacking Chair



Round Foldaway Table

CP310.



Product Information

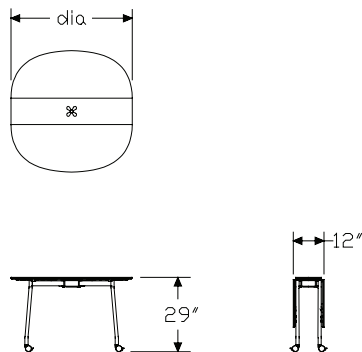
Description

This 3/4"-thick, 29"-high table has a laminate or veneer surface with a plywood edge. It has 2 folding sides, a center opening for wire management, and 4 painted legs with 2 locking and 2 non-locking black casters. The table supports collaborative work activities and can be used with other tables for larger conference areas. It can also be used as a secondary surface within a workstation.

Notes

Storage and keyboard support products cannot mount under table.
Round foldaway table can be configured with other foldaway table shapes.

Dimensions



Specification Information

Step 1.

CP310.

Step 2. Diameter

36	36" diameter
42	42" diameter
48	48" diameter

Step 3. Surface Material

L	laminate
W	veneer A

Prices for Steps 1-3.

	L	W
CP310. 36	\$1746	2267
42	\$1945	2529
48	\$2166	2813

Step 4. Top Finish

Solid-Color Laminate

For laminate (L)

8Q	folkstone grey	+\$0
91	white	+\$0
CL	cool grey neutral	+\$0
HF	inner tone light	+\$0
HT	inner tone	+\$0
LU	soft white	+\$0
WL	sandstone	+\$0
WN	warm grey neutral	+\$0
X1	chalk white	+\$0

Linen Laminate

For laminate (L)

LBM	crisp linen	+\$0
LBN	classic linen	+\$0
LBP	casual linen	+\$0

Mesh Laminate

For laminate (L)

LBK	pewter mesh	+\$0
LBL	steel mesh	+\$0

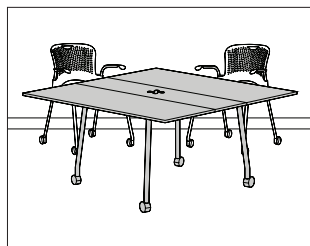
Round Foldaway Table *continued*

The Intersect® Portfolio — Tables

Twill Laminate		
<i>For laminate (L)</i>		
LBF	neutral twill	+\$0
LBG	sarum twill	+\$0
LBH	earthen twill	+\$0
LBJ	graphite twill	+\$0
LBQ	white twill	+\$0
Wood Veneer		
<i>For veneer (W)</i>		
UL	natural maple A	+\$110
Step 5. Base Finish		
MS	metallic silver	+\$0

Square Foldaway Table

CP311.



Product Information

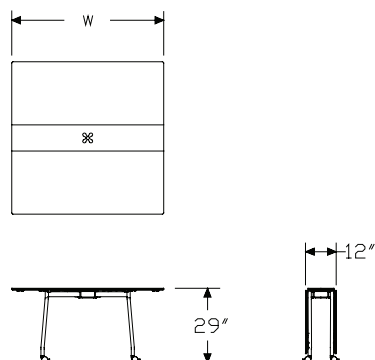
Description

This 3/4"-thick, 29"-high table has a laminate or veneer surface with a plywood edge. It has 2 folding sides, a center opening for wire management, and 4 painted legs with 2 locking and 2 non-locking black casters. The table supports collaborative work activities and can be used with other tables for larger conference areas. It can also be used as a secondary surface within a workstation.

Notes

Storage and keyboard support products cannot mount under table.
Square foldaway table can be configured with other foldaway table shapes.

Dimensions



Specification Information

Step 1.

CP311.

Step 2. Width

36	36" wide
42	42" wide
48	48" wide

Step 3. Surface Material

L	laminate
W	veneer A

Prices for Steps 1-3.

	L	W
CP311. 36	\$1746	2267
42	\$1945	2529
48	\$2166	2813

Step 4. Top Finish

Solid-Color Laminate

For laminate (L)

8Q	folkstone grey	+\$0
91	white	+\$0
CL	cool grey neutral	+\$0
HF	inner tone light	+\$0
HT	inner tone	+\$0
LU	soft white	+\$0
WL	sandstone	+\$0
WN	warm grey neutral	+\$0
X1	chalk white	+\$0

Linen Laminate

For laminate (L)

LBM	crisp linen	+\$0
LBN	classic linen	+\$0
LBP	casual linen	+\$0

Mesh Laminate

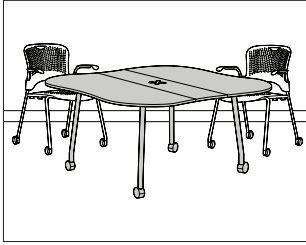
For laminate (L)

LBK	pewter mesh	+\$0
LBL	steel mesh	+\$0

Twill Laminate		
<i>For laminate (L)</i>		
LBF	neutral twill	+\$0
LBG	sarum twill	+\$0
LBH	earthen twill	+\$0
LBJ	graphite twill	+\$0
LBQ	white twill	+\$0
Wood Veneer		
<i>For veneer (W)</i>		
UL	natural maple A	+\$110
Step 5. Base Finish		
MS	metallic silver	+\$0

Butterfly Foldaway Table

CP312.



Product Information

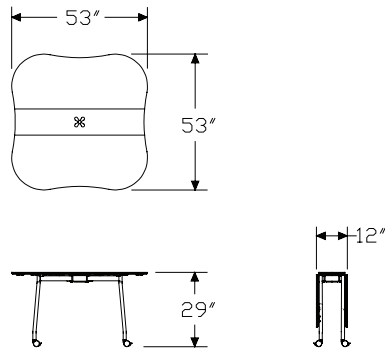
Description

This 3/4"-thick, 29"-high table has a laminate or veneer surface with a plywood edge. It is 54" wide and has a center opening for wire management. The table has 2 folding sides and 4 painted legs with 2 locking and 2 non-locking black casters. The table supports collaborative work activities and can be used with other tables for larger conference areas. It can also be used as a secondary surface within a workstation.

Notes

Storage and keyboard support products cannot mount under table.
Butterfly foldaway table can be configured with other foldaway table shapes.

Dimensions



Specification Information

Step 1.

CP312.54

Step 2. Surface Material

L laminate

W veneer A

Prices for Steps 1-2.

CP312.54 L	\$2385
W	\$3098

Step 3. Top Finish

Solid-Color Laminate

For laminate (L)

8Q	folkstone grey	+\$0
91	white	+\$0
CL	cool grey neutral	+\$0
HF	inner tone light	+\$0
HT	inner tone	+\$0
LU	soft white	+\$0
WL	sandstone	+\$0
WN	warm grey neutral	+\$0
X1	chalk white	+\$0

Linen Laminate

For laminate (L)

LBM	crisp linen	+\$0
LBN	classic linen	+\$0
LBP	casual linen	+\$0

Mesh Laminate

For laminate (L)

LBK	pewter mesh	+\$0
LBL	steel mesh	+\$0

Twill Laminate

For laminate (L)

LBF	neutral twill	+\$0
LBG	sarum twill	+\$0
LBH	earthen twill	+\$0
LBJ	graphite twill	+\$0
LBQ	white twill	+\$0

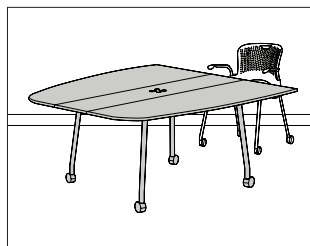
Butterfly Foldaway Table *continued*

The Intersect® Portfolio — Tables

Wood Veneer		
<i>For veneer (W)</i>		
UL	natural maple A	+\$110
Step 4. Base Finish		
MS	metallic silver	+\$0

Scow Foldaway Table

CP313.



Product Information

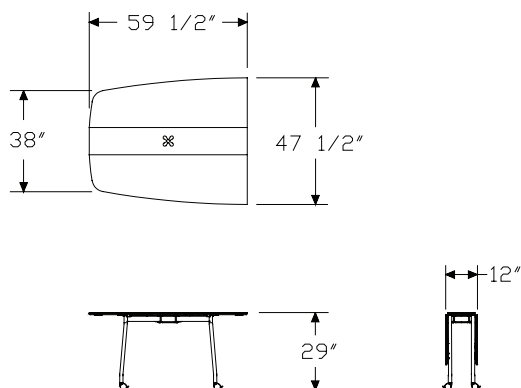
Description

This 3/4"-thick, 29"-high table has a laminate or veneer surface with a plywood edge. It is 60" wide and has a 48"-deep end on 1 side that tapers to 38" deep on the other end. The table has a center opening for wire management, 2 folding sides, and 4 painted legs with 2 locking and 2 non-locking black casters. The table supports collaborative work activities and can be used with other tables for larger conference areas. It can also be used as a secondary surface within a workstation. The scow shape is effective in teleconferencing applications.

Notes

Storage and keyboard support products cannot mount under table.
Scow foldaway table can be configured with other foldaway table shapes.

Dimensions



Specification Information

Step 1.

CP313.4860

Step 2. Surface Material

L laminate

W veneer A

Prices for Steps 1-2.

CP313.4860 L	\$2624
W	\$3412

Step 3. Top Finish

Solid-Color Laminate

For laminate (L)

8Q	folkstone grey	+\$0
91	white	+\$0
CL	cool grey neutral	+\$0
HF	inner tone light	+\$0
HT	inner tone	+\$0
LU	soft white	+\$0
WL	sandstone	+\$0
WN	warm grey neutral	+\$0
X1	chalk white	+\$0

Linen Laminate

For laminate (L)

LBM	crisp linen	+\$0
LBN	classic linen	+\$0
LBP	casual linen	+\$0

Mesh Laminate

For laminate (L)

LBK	pewter mesh	+\$0
LBL	steel mesh	+\$0

Twill Laminate

For laminate (L)

LBF	neutral twill	+\$0
LBG	sarum twill	+\$0
LBH	earthen twill	+\$0
LBJ	graphite twill	+\$0
LBQ	white twill	+\$0

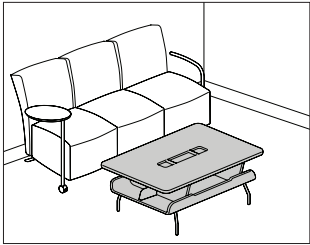
Scow Foldaway Table *continued*

The Intersect® Portfolio — Tables

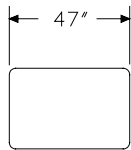
Wood Veneer		
<i>For veneer (W)</i>		
UL	natural maple A	+\$125
Step 4. Base Finish		
MS	metallic silver	+\$0

Kotatsu Work Table

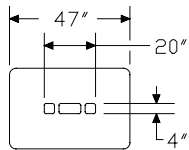
CP330.



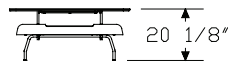
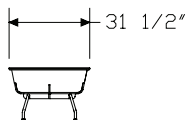
Product Information
Description
This 20"-high table has a 3/4"-thick laminate surface with a plywood edge. The molded plywood understructure is natural maple. The table is 31 1/2" deep x 47" wide and has an integrated lower shelf for storage. It can be specified with 3 separate cutouts in the top surface; 2 square cutouts and 1 rectangular cutout. The cutouts are 3/4" deep and hold pens and pencils, cell phones, clips, and other small items. The table has 4 painted legs with 1/2" adjustable silver glides. The table can be used for informal meetings or used in a sitting area.
Notes
Storage and keyboard support products cannot mount under table. Optional cutouts match laminate finish.
Dimensions



No Cutout



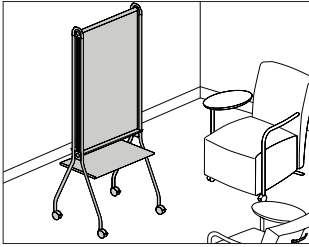
Cutout



Specification Information
Step 1.
CP330.L
Step 2. Cutout
N no cutout
C cutout
Prices for Steps 1-2.
CP330.L N \$2533
C \$2533
Step 3. Top Finish
Solid-Color Laminate
8Q folkstone grey +\$0
91 white +\$0
BU black umber +\$0
WL sandstone +\$0
X1 chalk white +\$0
Step 4. Base Finish
MS metallic silver +\$0

Mobile Easel

CP820.



Product Information

Description

This dual-sided easel has markable display surfaces on each side; the markable surface can be specified as magnetic or non-magnetic. A ledge is included on each side for markers and erasers. The easel has clip/hooks to hang pads of paper; clip/hooks can be positioned anywhere along the top rail. The easel can be specified with an optional laminate or veneer shelf. The shelf has a plywood edge and includes an organizer tray; 1 tray is included with the 30"-wide easel and 2 trays are included with the 60"-wide easel. The easel has 4 dual-wheel black casters; 2 are locking and 2 are non-locking.

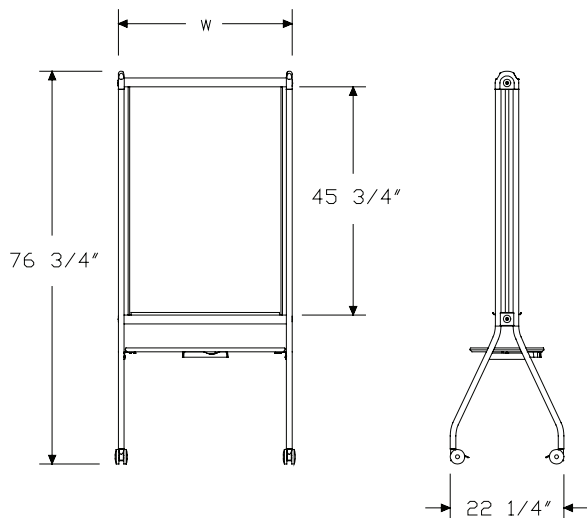
Notes

Actual width for 30"-wide easel is 33¹/₄"; actual width for the 60"-wide easel is 62".

Order mobile easel accessories separately:

- Clip/hook (CP891.)

Dimensions



Specification Information

Step 1.

CP820.

Step 2. Width

30	30" wide
60	60" wide

Step 3. Surface Material

A	non-magnetic
B	magnetic

Step 4. Shelf Option

N	no shelf
L	laminate shelf
W	veneer shelf A

Prices for Steps 1-4.

	N	L	W
CP820. 30 A	\$1483	1808	1909
B	\$2220	2550	2649
60 A	\$2220	2713	2860
B	\$3327	3819	3968

Step 5. Shelf Finish

Solid-Color Laminate

For laminate shelf (L)

8Q	folkstone grey	+\$0
91	white	+\$0
CL	cool grey neutral	+\$0
HF	inner tone light	+\$0
HT	inner tone	+\$0
LU	soft white	+\$0
WL	sandstone	+\$0
WN	warm grey neutral	+\$0
X1	chalk white	+\$0

Linen Laminate

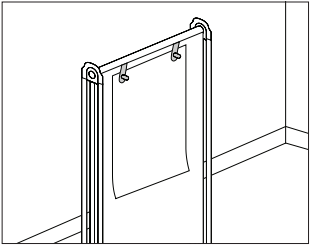
For laminate shelf (L)

LBM	crisp linen	+\$0
LBN	classic linen	+\$0
LBP	casual linen	+\$0

Mesh Laminate		
<i>For laminate shelf (L)</i>		
LBK	pewter mesh	+\$0
LBL	steel mesh	+\$0
Twill Laminate		
<i>For laminate shelf (L)</i>		
LBF	neutral twill	+\$0
LBG	sarum twill	+\$0
LBH	earthen twill	+\$0
LBJ	graphite twill	+\$0
LBQ	white twill	+\$0
Wood Veneer		
<i>For veneer shelf (W)</i>		
UL	natural maple A	+\$50
Step 6. Base Finish		
MS	metallic silver	+\$0

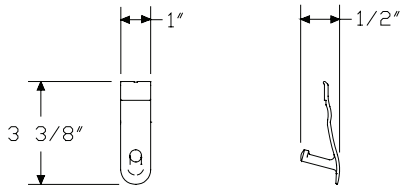
Clip/Hook

CP891.



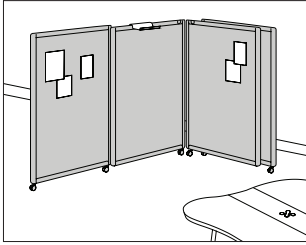
Product Information
Description
These clip/hooks can be used with an idea exchange center or an easel. They hold pads of paper or tackboards. They can be positioned anywhere along the top rail of the idea exchange center or easel. Finish is black. Package contains 8.
Dimensions

Specification Information
Step 1.
CP891.
\$45



Telescoping Screen, 4 Panels

CP110.



Product Information

Description

This mobile screen creates divisions within an environment and provides vertical workspace. It is available in 2 heights: the 68"-high screen provides standing or seated privacy; the 54"-high screen provides seated privacy. The screen has 2 48"-wide panels on each side that connect with a hinge; this hinge adjusts the screen opening from 39° to 125°. The panels telescope in and out to accommodate a change in room or group size and to facilitate movement and storage. Bumpers are included on the inside of the hinge to prevent panels from touching when closed.

There are 4 screen combinations of marker boards, tackable fabric panels, and/or translucent panels for each screen height. The screen has casters; the 2 end panels have locking casters to limit movement of the screen. The frame is anodized aluminum.

Notes

Moving screen through doorway may require opening up the screen's angle.

Specify 2 panels on 1 side of screen from the hinged panel out; other side of screen is a mirror of specified side. See following chart:

Specify—Hinged Panels—End Panels

FF—fabric panel—fabric panel

TT—translucent panel—translucent panel

MM—marker board—marker board

MF—marker board—fabric panel

Screen specified with 4 fluted translucent panels (CP110.54TTFW and CP110.68TTFW) passes Class A fire code.

Screens cannot attach to each other or to other Herman Miller products. Items tacked on fabric panels do not need to be removed when screen is closed; items cannot exceed $\frac{3}{4}$ " thick.

Screen accepts Customer's Own Material (COM). For nondirectional, 54"-wide fabrics used on 54"-high panels, order minimum of $2\frac{3}{4}$ yards per fabric panel specified; for nondirectional, 66"-wide fabrics used on 68"-high panels, order minimum of $2\frac{3}{4}$ yards per fabric panel specified (see following chart). COM with rayon cannot be used on screen. For information on multiple quantities or directional fabrics, contact COM Department. See Order Information in Appendices.

Height, Surface Material—Yardage

54" high, FF— $11\frac{1}{2}$

54" high, MF—6

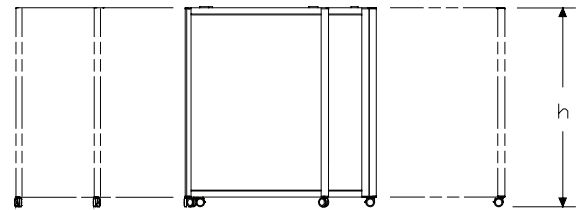
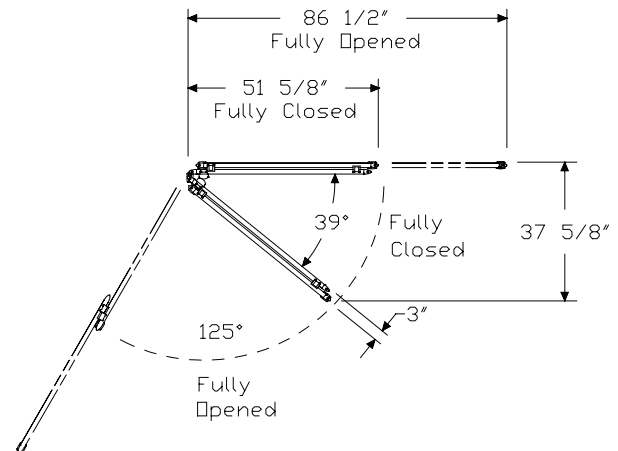
68" high, FF—15

68" high, MF— $7\frac{1}{2}$

Order optional products separately:

- Flip chart hooks (CP190.)
- Tool tray (G7211.)

Dimensions



Telescoping Screen, 4 Panels

continued

Specification Information

Step 1.

CP110.

Step 2. Height

54 54" high

68 68" high

Step 3. Surface Material

FF fabric

TT translucent

MM marker board

MF marker board, fabric

Prices for Steps 1-3.

	FF	TT	MM	MF
CP110. 54	\$4229	4358	4687	4476
68	\$4535	4648	5322	4934

Step 4.

See application chart and textiles list for fabric usage and numbers.

First 2 digits of number indicate fabric line; remaining digit(s) indicate fabric color.

Translucent Finish

For translucent (TT)

FW fluted translucent **A** +\$0

FS frosted translucent +\$400

Surface Finish

For fabric (FF)

Price Category 1 +\$0

Price Category 2 +\$137

Price Category 3 +\$367

Price Category 4 +\$577

Price Category 5 +\$845

Price Category B +\$405

Price Category C +\$615

Price Category D +\$809

Price Category E +\$1020

Price Category F +\$1427

Surface Finish

For marker board, fabric (MF)

Price Category 1 +\$0

Price Category 2 +\$69

Price Category 3 +\$184

Price Category 4 +\$289

Price Category 5 +\$461

Price Category B +\$205

Price Category C +\$308

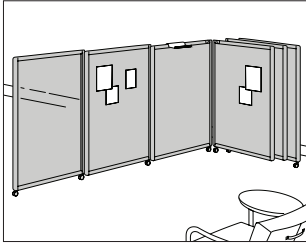
Price Category D +\$405

Price Category E +\$512

Price Category F +\$710

Telescoping Screen, 6 Panels

CP111.



Product Information

Description

This 68"-high mobile screen provides standing or seated privacy, creates divisions within an environment, and provides vertical workspace. It has 3 48"-wide panels on each side that connect with a hinge; this hinge adjusts the screen opening from 24° to 125°. The panels telescope in and out to accommodate a change in room or group size and to facilitate movement and storage. Bumpers are included on the inside of the hinge to prevent panels from touching when closed.

There are 6 screen combinations of marker boards, tackable fabric panels, and/or translucent panels. The screen has casters; the 2 end panels have locking casters to limit movement of the screen. The frame is anodized aluminum.

Notes

Specify 3 panels on 1 side of screen from the hinged panel out; other side of screen is a mirror of specified side. See following chart:

Specify—Hinged Panels—Middle Panels—End Panels

FFF—fabric panel—fabric panel—fabric panel

TTT—translucent panel—translucent panel—translucent panel

MMM—marker board—marker board—marker board

MFT—marker board—fabric panel—translucent panel

MMF—marker board—marker board—fabric panel

MFF—marker board—fabric panel—fabric panel

Screen specified with 6 fluted translucent panels (CP111.68TTTTFW)

passes Class A fire code.

Screens cannot attach to each other or to other Herman Miller products. Items tacked on fabric panels do not need to be removed when screen is closed; items cannot exceed $\frac{3}{4}$ " thick.

Screen accepts Customer's Own Material (COM). For nondirectional, 66"-wide fabrics, order minimum of $2\frac{3}{4}$ yards per fabric panel specified (see following chart). COM with rayon cannot be used on screen. For information on multiple quantities or directional fabrics, contact COM Department. See Order Information in Appendices.

Surface Material—Yardage

FFF—22

MFT— $7\frac{1}{2}$

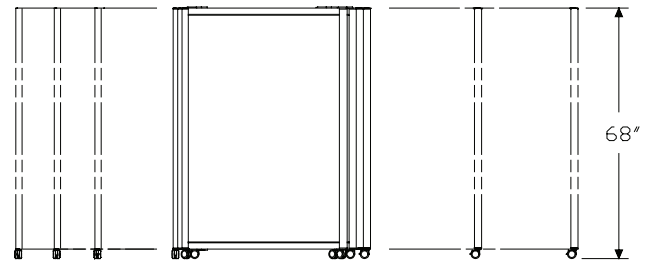
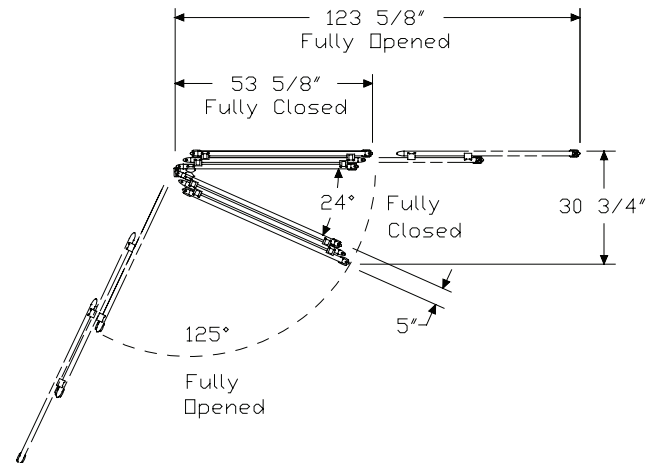
MMF— $7\frac{1}{2}$

MFF—15

Order optional products separately:

- Flip chart hooks (CP190.)
- Tool tray (G7211.)

Dimensions



Telescoping Screen, 6 Panels

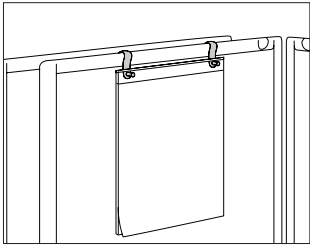
continued

Specification Information		
Step 1.		
CP111.68		
Step 2. Surface Material		
FFF	fabric	
TTT	translucent	
MMM	marker board	
MFF	marker board, fabric, fabric	
MFT	marker board, fabric, translucent	
MMF	marker board, marker board, fabric	
Prices for Steps 1-2.		
CP111.68	FFF	\$6467
	TTT	\$6192
	MMM	\$7674
	MFF	\$6877
	MFT	\$6937
	MMF	\$7274
Step 3. Translucent Finish		
<i>For translucent (TTT)</i>		
FW	fluted translucent <input type="text" value="A"/>	+\$0
FS	frosted translucent	+\$642
<i>For marker board, fabric, translucent (MFT)</i>		
FW	fluted translucent	+\$0
FS	frosted translucent	+\$200
Step 4. Surface Finish		
<i>See application chart and textiles list for fabric usage and numbers.</i>		
<i>First 2 digits of number indicate fabric line; remaining digit(s) indicate fabric color.</i>		
<i>For fabric (FFF)</i>		
Price Category 1		+\$0
Price Category 2		+\$204
Price Category 3		+\$548
Price Category 4		+\$865
Price Category 5		+\$845
Price Category B		+\$610
Price Category C		+\$923
Price Category D		+\$1214
Price Category E		+\$1529
Price Category F		+\$2083

<i>For marker board, fabric, fabric (MFF)</i>	
Price Category 1	+\$0
Price Category 2	+\$137
Price Category 3	+\$367
Price Category 4	+\$577
Price Category 5	+\$1214
Price Category B	+\$405
Price Category C	+\$615
Price Category D	+\$809
Price Category E	+\$1020
Price Category F	+\$1427
<i>For marker board, fabric, translucent (MFT) or marker board, marker board, fabric (MMF)</i>	
Price Category 1	+\$0
Price Category 2	+\$69
Price Category 3	+\$184
Price Category 4	+\$289
Price Category 5	+\$1214
Price Category B	+\$205
Price Category C	+\$308
Price Category D	+\$405
Price Category E	+\$512
Price Category F	+\$710

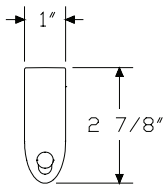
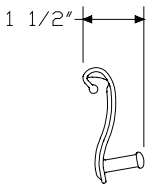
Flip Chart Hooks

CP190.



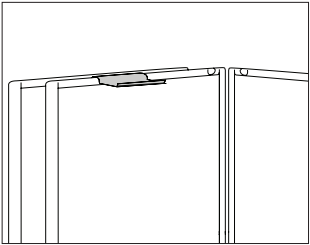
Product Information
Description
This product has 2 hooks that attach to a telescoping screen. The hooks have pegs to hold flip chart paper. Flip chart paper is not included. The hooks are graphite.
Dimensions

Specification Information
Step 1.
CP190. \$48



Tool Tray

G7211.



Product Information

Description

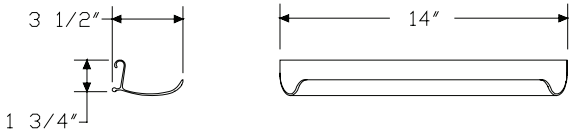
This tray hangs from a telescoping screen to store small items. It is anodized aluminum.

Dimensions

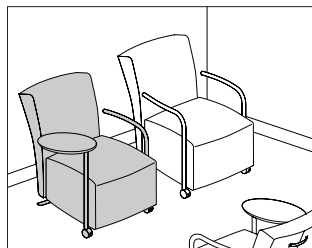
Specification Information

Step 1.

G7211. \$139



Lounge Chair



CL11L	CL12X	CL14X	CL16L
CL11M	CL12Y	CL14Y	CL16M
CL11W	CL12Z	CL14Z	CL16W
CL11X	CL13M	CL15L	CL16X
CL11Y	CL13W	CL15M	CL16Y
CL11Z	CL13X	CL15W	CL16Z
CL12L	CL14L	CL15X	
CL12M	CL14M	CL15Y	
CL12W	CL14W	CL15Z	

Product Information

Description

This chair has a tubular frame and an upholstered-foam back and seat. It has a welt cord along the outside edge of the back and along the top edge of the seat. The back and seat can be specified with 1 or 2 fabrics, 1 or 2 leathers, or a combination of fabric and leather. The arms can be specified with 2 metal arms, 2 leather arms, 1 metal arm and 1 tablet arm, or 1 leather arm and 1 tablet arm. A chair with a tablet arm includes 2 casters on the front, 2 glides on the back, and a back handle for easy movement. The 2" casters are black nylon with double wheels. The oval tablet arms have a laminate or veneer surface and swivel 360°.

A fire-retardant chair meets CAL 133 requirements; this chair is manufactured with cushions covered with a fire-barrier material and upholstered in approved fire-retardant fabrics.

Notes

Chair is tested and warranted for use by persons 300 pounds and under. When front casters (C) are specified, a back handle is included.

Following are planning considerations for back, seat, and arm materials:

- If 2 different fabrics are specified on back and seat, leather arms cannot be specified.
- If 2 different leathers are specified for back and seat, leather arms will match leather seat.
- For fabric back and leather seat, leather arms can be specified. Leather arms will match leather seat.
- For leather back and fabric seat, leather arms can be specified. Arms will match leather back.

For contrasting welt colors or for fabric and/or leather combinations not available as standard product, contact Herman Miller Options. Call (800) 654 3910 for more information.

Customer's Own Material (COM) and Customer's Own Leather (COL) require the following. See Order Information in Appendices for additional information.

Type—COM—COL

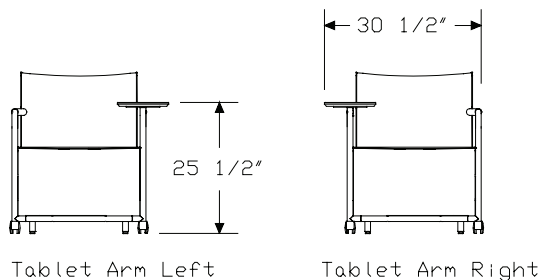
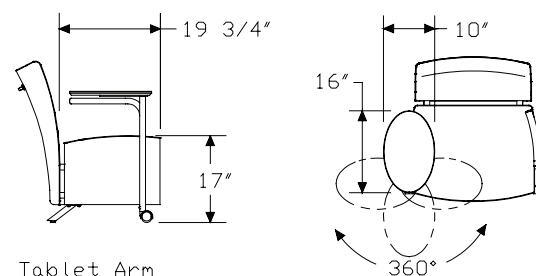
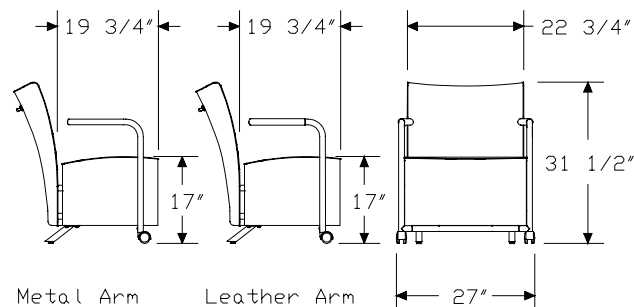
Chair—3½ yards—63 square feet

Back only—2½ yards—36 square feet

Seat only—2½ yards—36 square feet

Leather arms only—NA—1 square foot

Dimensions



Specification Information	
Step 1.	
CL1	A
Step 2. Upholstery	
1	1 fabric A
2	1 leather A
3	2 fabrics A
4	2 leathers A
5	fabric back, leather seat A
6	leather back, fabric seat A
Step 3. Arms	
<i>For 1 fabric (1), 1 leather (2), 2 leathers (4), fabric back, leather seat (5), or leather back, fabric seat (6)</i>	
M	metal arms A
L	leather arms A
W	tablet arm left, metal arm right A
X	metal arm left, tablet arm right A
Y	tablet arm left, leather arm right A
Z	leather arm left, tablet arm right A
<i>For 2 fabrics (3)</i>	
M	metal arms A
W	tablet arm left, metal arm right A
X	metal arm left, tablet arm right A
Step 4. Casters/Glides	
<i>For metal arms (M) or leather arms (L)</i>	
C	front casters, back glides A
G	front and back glides A
<i>For tablet arm left, metal arm right (W), metal arm left, tablet arm right (X), tablet arm left, leather arm right (Y), or leather arm left, tablet arm right (Z)</i>	
C	front casters, back glides A
Step 5. Fire Retardancy	
<i>For not fire retardant (*), skip this step.</i>	
<i>For 1 fabric (1) or 2 fabrics (3)</i>	
FR	fire retardant A
<i>For 1 leather (2), 2 leathers (4), fabric back, leather seat (5), or leather back, fabric seat (6), skip this step.</i>	

Prices for Steps 1-5.			
		*	FR
CL11M	C	\$1784	2070
	G	\$1744	2028
CL11L	C	\$2087	2372
	G	\$2043	2327
CL11W	C	\$2179	2462
CL11X	C	\$2179	2462
CL11Y	C	\$2333	2617
CL11Z	C	\$2333	2617
CL12M	C	\$1784	—
	G	\$1744	—
CL12L	C	\$2087	—
	G	\$2043	—
CL12W	C	\$2179	—
CL12X	C	\$2179	—
CL12Y	C	\$2333	—
CL12Z	C	\$2333	—
CL13M	C	\$1784	2070
	G	\$1744	2028
CL13W	C	\$2135	2417
CL13X	C	\$2135	2417
CL14M	C	\$1784	—
	G	\$1744	—
CL14L	C	\$2087	—
	G	\$2043	—
CL14W	C	\$2179	—
CL14X	C	\$2179	—

Lounge Chair *continued*

CL14Y	C	\$2333	—
CL14Z	C	\$2333	—
CL15M	C	\$1784	—
	G	\$1744	—
CL15L	C	\$2087	—
	G	\$2043	—
CL15W	C	\$2179	—
CL15X	C	\$2179	—
CL15Y	C	\$2333	—
CL15Z	C	\$2333	—
CL16M	C	\$1784	—
	G	\$1744	—
CL16L	C	\$2087	—
	G	\$2043	—
CL16W	C	\$2179	—
CL16X	C	\$2179	—
CL16Y	C	\$2333	—
CL16Z	C	\$2333	—

Step 6. Frame Finish

G1	graphite	A	+\$0
MS	metallic silver	A	+\$40

Step 7. Tablet Arm Surface Finish

For tablet arm left, metal arm right (W), metal arm left, tablet arm right (X), tablet arm left, leather arm right (Y), or leather arm left, tablet arm right (Z)

Solid-Color Laminate

8Q	folkstone grey	A	+\$0
91	white	A	+\$0
BU	black umber	A	+\$0
WL	sandstone	A	+\$0
X1	chalk white	A	+\$0

Wood Veneer

UL	natural maple	A	+\$30
----	---------------	---	-------

Step 8.

See application chart and textiles list for fabric usage and numbers.
First 2 digits of number indicate fabric line; remaining digit(s) indicate fabric color.

Leather Back and Seat

For 1 leather (2) with not fire retardant

Price Category 7	A	+\$240
Price Category 9		+\$850

Leather Back

For 2 leathers (4) or leather back, fabric seat (6) with not fire retardant

Price Category 7	A	+\$120
Price Category 9		+\$425

Fabric Back and Seat

For 1 fabric (1) with not fire retardant

Price Category 1		+\$0
Price Category 2		+\$49
Price Category 3		+\$73
Price Category 4		+\$121
Price Category 5		+\$194
Price Category B		+\$146
Price Category C		+\$186
Price Category E		+\$267
Price Category F		+\$315
Price Category G		+\$484
Price Category H		+\$663
Price Category I		+\$780

Fabric Back and Seat

For 1 fabric (1) with fire retardant (FR)

Price Category 1		+\$0
Price Category 2		+\$49
Price Category 3		+\$73
Price Category 5		+\$194

Fabric Back	
<i>For 2 fabrics (3) or fabric back, leather seat (5) with not fire retardant</i>	
Price Category 1	+\$0
Price Category 2	+\$25
Price Category 3	+\$37
Price Category 4	+\$61
Price Category 5	+\$97
Price Category B	+\$73
Price Category C	+\$93
Price Category E	+\$134
Price Category F	+\$158
Price Category G	+\$242
Price Category H	+\$332
Price Category I	+\$390

Fabric Back	
<i>For 2 fabrics (3) with fire retardant (FR)</i>	
Price Category 1	+\$0
Price Category 2	+\$25
Price Category 3	+\$37
Price Category 5	+\$97

Step 9.
See application chart and textiles list for fabric usage and numbers.
First 2 digits of number indicate fabric line; remaining digit(s) indicate fabric color.

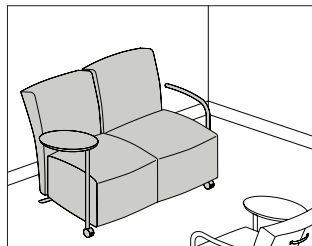
Fabric Seat	
<i>For 2 fabrics (3) with fire retardant (FR)</i>	
Price Category 1	+\$0
Price Category 2	+\$25
Price Category 3	+\$37
Price Category 5	+\$97

Leather Arms	
<i>For 1 fabric (1) or 1 leather (2) with leather arms (L), or tablet arm left, leather arm right (Y), or leather arm left, tablet arm right (Z)</i>	
Price Category 7 A	+\$0
Price Category 9	+\$0

Leather Seat	
<i>For 2 leathers (4) or fabric back, leather seat (5) with not fire retardant</i>	
Price Category 7 A	+\$120
Price Category 9	+\$425

Fabric Seat	
<i>For 2 fabrics (3) or leather back, fabric seat (6) with not fire retardant</i>	
Price Category 1	+\$0
Price Category 2	+\$25
Price Category 3	+\$37
Price Category 4	+\$61
Price Category 5	+\$97
Price Category B	+\$73
Price Category C	+\$93
Price Category E	+\$134
Price Category F	+\$158
Price Category G	+\$242
Price Category H	+\$332
Price Category I	+\$390

2-Seat Sofa



CL21B	CL22M	CL24B	CL25M	CL26X
CL21L	CL22W	CL24L	CL25W	CL26Y
CL21M	CL22X	CL24M	CL25X	CL26Z
CL21W	CL22Y	CL24W	CL25Y	
CL21X	CL22Z	CL24X	CL25Z	
CL21Y	CL23B	CL24Y	CL26B	
CL21Z	CL23M	CL24Z	CL26L	
CL22B	CL23W	CL25B	CL26M	
CL22L	CL23X	CL25L	CL26W	

Product Information

Description

This 2-seat sofa has a tubular frame and upholstered-foam backs and seats. It has a welt cord along the outside edge of the back and along the top edge of each seat. The back and seat can be specified with 1 or 2 fabrics, 1 or 2 leathers, or a combination of fabric and leather. The arms can be specified with 2 metal arms, 2 leather arms, 1 metal arm and 1 tablet arm, 1 leather arm and 1 tablet arm, or 2 tablet arms. A sofa with a tablet arm includes 2 casters on the front, 2 glides on the back, and 2 back handles for easy movement. The 2" casters are black nylon with double wheels. The oval tablet arms have a laminate or veneer surface and swivel 360°.

A fire-retardant sofa meets CAL 133 requirements; this sofa is manufactured with cushions covered with a fire-barrier material and upholstered in approved fire-retardant fabrics.

Notes

Chair is tested and warranted for use by persons 300 pounds and under. When front casters (C) are specified, 2 back handles are included.

Following are planning considerations for back, seat, and arm materials:

- If 2 different fabrics are specified on back and seat, leather arms cannot be specified.
- If 2 different leathers are specified for back and seat, leather arms will match leather seat.
- For fabric back and leather seat, leather arms can be specified. Leather arms will match leather seat.
- For leather back and fabric seat, leather arms can be specified. Arms will match leather back.

For contrasting welt colors or for fabric and/or leather combinations not available as standard product, contact Herman Miller Options. Call (800) 654 3910 for more information.

Customer's Own Material (COM) and Customer's Own Leather (COL) require the following. See Order Information in Appendices for additional information.

Type—COM—COL

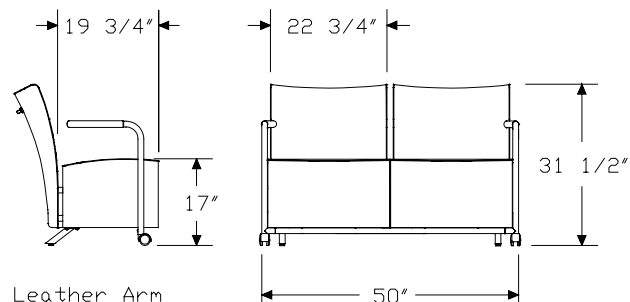
Chair—6½ yards—117 square feet

Back only—5 yards—67 square feet

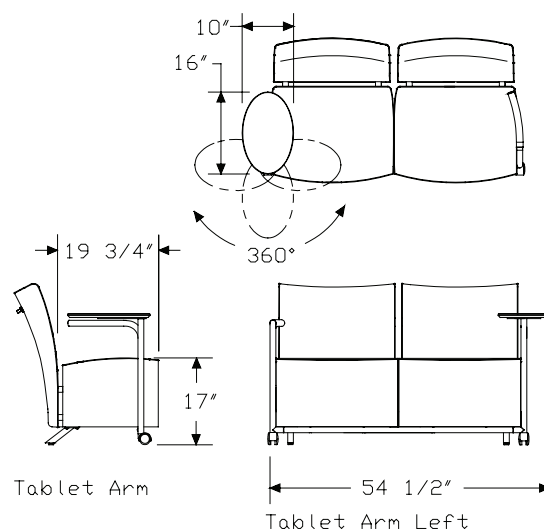
Seat only—5 yards—67 square feet

Leather arms only—NA—1 square foot

Dimensions

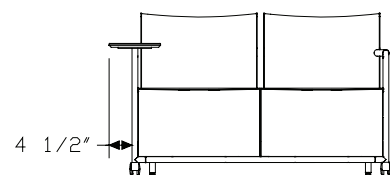


Leather Arm

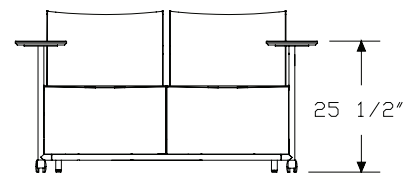


Tablet Arm

Tablet Arm Left



Tablet Arm Right



Tablet Arms Left & Right

Specification Information	
Step 1.	
CL2	A
Step 2. Upholstery	
1	1 fabric A
2	1 leather A
3	2 fabrics A
4	2 leathers A
5	fabric back, leather seat A
6	leather back, fabric seat A
Step 3. Arms	
<i>For 1 fabric (1), 1 leather (2), 2 leathers (4), fabric back, leather seat (5), or leather back, fabric seat (6)</i>	
M	metal arms A
L	leather arms A
W	tablet arm left, metal arm right A
X	metal arm left, tablet arm right A
Y	tablet arm left, leather arm right A
Z	leather arm left, tablet arm right A
B	tablet arms left and right A
<i>For 2 fabrics (3)</i>	
M	metal arms A
W	tablet arm left, metal arm right A
X	metal arm left, tablet arm right A
B	tablet arms left and right A
Step 4. Casters/Glides	
<i>For metal arms (M) or leather arms (L)</i>	
C	front casters, back glides A
G	front and back glides A
<i>For tablet arm left, metal arm right (W), metal arm left, tablet arm right (X), tablet arms left and right (B), tablet arm left, leather arm right (Y), or leather arm left, tablet arm right (Z)</i>	
C	front casters, back glides A
Step 5. Fire Retardancy	
<i>For not fire retardant (*), skip this step.</i>	
<i>For 1 fabric (1) or 2 fabrics (3)</i>	
FR	fire retardant A

For 1 leather (2), 2 leathers (4), fabric back, leather seat (5), or leather back, fabric seat (6), skip this step.

Prices for Steps 1-5.		*	FR
CL21M	C	\$3088	3657
	G	\$3044	3615
CL21L	C	\$3388	3958
	G	\$3346	3917
CL21W	C	\$3480	4050
CL21X	C	\$3480	4050
CL21Y	C	\$3636	4206
CL21Z	C	\$3636	4206
CL21B	C	\$3871	4440
CL22M	C	\$3088	—
	G	\$3044	—
CL22L	C	\$3388	—
	G	\$3346	—
CL22W	C	\$3480	—
CL22X	C	\$3480	—
CL22Y	C	\$3636	—
CL22Z	C	\$3636	—
CL22B	C	\$3871	—
CL23M	C	\$3088	3657
	G	\$3044	3615
CL23W	C	\$3480	4050
CL23X	C	\$3480	4050
CL23B	C	\$3871	4440

2-Seat Sofa *continued*

CL24M	C	\$3088	—
	G	\$3044	—
CL24L	C	\$3388	—
	G	\$3346	—
CL24W	C	\$3480	—
CL24X	C	\$3480	—
CL24Y	C	\$3636	—
CL24Z	C	\$3636	—
CL24B	C	\$3871	—
CL25M	C	\$3088	—
	G	\$3044	—
CL25L	C	\$3388	—
	G	\$3346	—
CL25W	C	\$3480	—
CL25X	C	\$3480	—
CL25Y	C	\$3636	—
CL25Z	C	\$3636	—
CL25B	C	\$3871	—
CL26M	C	\$3088	—
	G	\$3044	—
CL26L	C	\$3388	—
	G	\$3346	—
CL26W	C	\$3480	—
CL26X	C	\$3480	—
CL26Y	C	\$3636	—
CL26Z	C	\$3636	—
CL26B	C	\$3871	—

Step 6. Frame Finish

G1	graphite	A	+\$0
MS	metallic silver	A	+\$60

Step 7. Tablet Arm Surface Finish

Solid-Color Laminate

For tablet arm left, metal arm right (W), metal arm left, tablet arm right (X), tablet arm left, leather arm right (Y), or leather arm left, tablet arm right (Z)

8Q	folkstone grey	A	+\$0
91	white	A	+\$0
BU	black umber	A	+\$0
WL	sandstone	A	+\$0
X1	chalk white	A	+\$0

Wood Veneer

For tablet arm left, metal arm right (W), metal arm left, tablet arm right (X), tablet arm left, leather arm right (Y), or leather arm left, tablet arm right (Z)

UL	natural maple	A	+\$30
-----------	---------------	---	-------

Solid-Color Laminate

For tablet arms left and right (B)

8Q	folkstone grey	A	+\$0
91	white	A	+\$0
BU	black umber	A	+\$0
WL	sandstone	A	+\$0
X1	chalk white	A	+\$0

Wood Veneer

For tablet arms left and right (B)

UL	natural maple	A	+\$60
-----------	---------------	---	-------

Step 8.

See application chart and textiles list for fabric usage and numbers.
First 2 digits of number indicate fabric line; remaining digit(s) indicate fabric color.

Fabric Back and Seat

For 1 fabric (1) with not fire retardant

Price Category 1	+\$0
Price Category 2	+\$97
Price Category 3	+\$146
Price Category 4	+\$242
Price Category 5	+\$388
Price Category B	+\$202
Price Category C	+\$276
Price Category E	+\$422
Price Category F	+\$546
Price Category G	+\$709
Price Category H	+\$862
Price Category I	+\$1014

Fabric Back and Seat

For 1 fabric (1) with fire retardant (FR)

Price Category 1	+\$0
Price Category 2	+\$97
Price Category 3	+\$146
Price Category 5	+\$388

Fabric Back

For 2 fabrics (3) or fabric back, leather seat (5) with not fire retardant

Price Category 1	+\$0
Price Category 2	+\$49
Price Category 3	+\$73
Price Category 4	+\$121
Price Category 5	+\$194
Price Category B	+\$146
Price Category C	+\$186
Price Category E	+\$267
Price Category F	+\$315
Price Category G	+\$484
Price Category H	+\$663
Price Category I	+\$780

Fabric Back

For 2 fabrics (3) with fire retardant (FR)

Price Category 1	+\$0
Price Category 2	+\$49
Price Category 3	+\$73
Price Category 5	+\$194

Leather Back and Seat

For 1 leather (2) with not fire retardant

Price Category 7 <input type="checkbox"/> A	+\$480
Price Category 9	+\$1700

Leather Back

For 2 leathers (4) or leather back, fabric seat (6) with not fire retardant

Price Category 7 <input type="checkbox"/> A	+\$240
Price Category 9	+\$850

Step 9.

See application chart and textiles list for fabric usage and numbers.
First 2 digits of number indicate fabric line; remaining digit(s) indicate fabric color.

Leather Arms

For 1 fabric (1) or 1 leather (2) with leather arms (L), or tablet arm left, leather arm right (Y), or leather arm left, tablet arm right (Z)

Price Category 7 <input type="checkbox"/> A	+\$0
Price Category 9	+\$0

Leather Seat

For 2 leathers (4) or fabric back, leather seat (5) with not fire retardant

Price Category 7 <input type="checkbox"/> A	+\$240
Price Category 9	+\$850

Fabric Seat

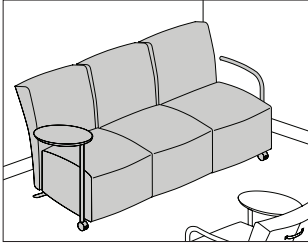
For 2 fabrics (3) or leather back, fabric seat (6) with not fire retardant

Price Category 1	+\$0
Price Category 2	+\$49
Price Category 3	+\$73
Price Category 4	+\$121
Price Category 5	+\$194
Price Category B	+\$146
Price Category C	+\$186
Price Category E	+\$267
Price Category F	+\$315
Price Category G	+\$484
Price Category H	+\$663
Price Category I	+\$780

2-Seat Sofa *continued*

Fabric Seat	
<i>For 2 fabrics (3) with fire retardant (FR)</i>	
Price Category 1	+\$0
Price Category 2	+\$49
Price Category 3	+\$73
Price Category 5	+\$194

3-Seat Sofa



CL31B
CL31L
CL31M
CL31W
CL31X
CL31Y
CL31Z
CL32B
CL32L

CL32M
CL32W
CL32X
CL32Y
CL32Z
CL33B
CL33M
CL33W
CL33X

CL34B
CL34L
CL34M
CL34W
CL34X
CL34Y
CL34Z
CL35B
CL35L

CL35M
CL35W
CL35X
CL35Y
CL35Z
CL36B
CL36L
CL36M
CL36W

CL36X
CL36Y
CL36Z

Product Information

Description

This 3-seat sofa has a tubular frame and upholstered-foam backs and seats. It has a welt cord along the outside edge of the back and along the top edge of each seat. The back and seat can be specified with 1 or 2 fabrics, 1 or 2 leathers, or a combination of fabric and leather. The arms can be specified with 2 metal arms, 2 leather arms, 1 metal arm and 1 tablet arm, 1 leather arm and 1 tablet arm, or 2 tablet arms. A sofa with a tablet arm includes 2 casters on the front, 2 glides on the back, and 2 back handles for easy movement. The 2" casters are black nylon with double wheels. The oval tablet arms have a laminate or veneer surface and swivel 360°.

A fire-retardant sofa meets CAL 133 requirements; this sofa is manufactured with cushions covered with a fire-barrier material and upholstered in approved fire-retardant fabrics.

Notes

Chair is tested and warranted for use by persons 300 pounds and under. When front casters (C) are specified, 2 back handles are included.

Following are planning considerations for back, seat, and arm materials:

- If 2 different fabrics are specified on back and seat, leather arms cannot be specified.
- If 2 different leathers are specified for back and seat, leather arms will match leather seat.
- For fabric back and leather seat, leather arms can be specified. Leather arms will match leather seat.
- For leather back and fabric seat, leather arms can be specified. Arms will match leather back.

For contrasting welt colors or for fabric and/or leather combinations not available as standard product, contact Herman Miller Options. Call (800) 654 3910 for more information.

Customer's Own Material (COM) and Customer's Own Leather (COL) require the following. See Order Information in Appendices for additional information.

Type—COM—COL

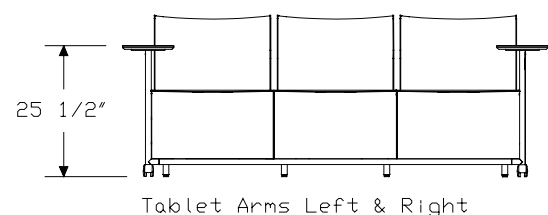
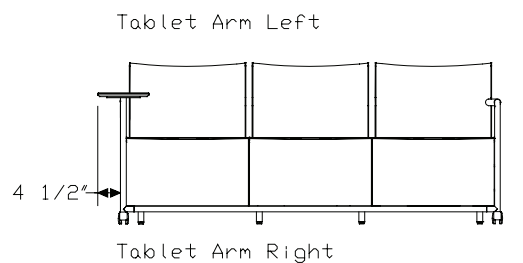
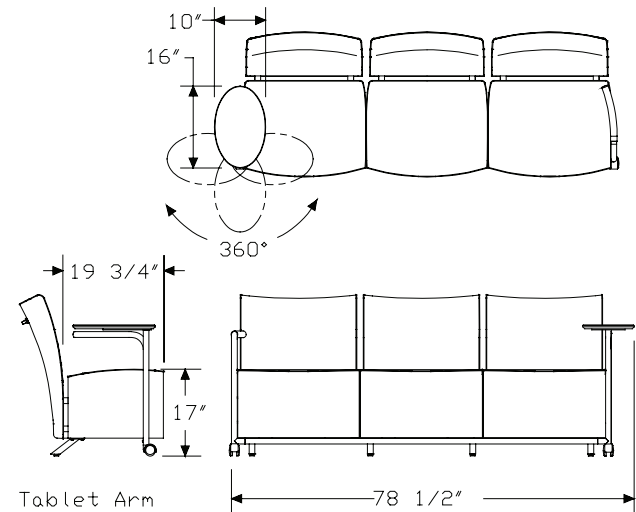
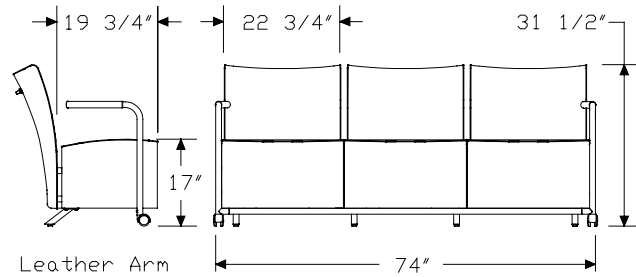
Chair—9½ yards—171 square feet

Back only—7½ yards—108 square feet

Seat only—7½ yards—108 square feet

Leather arms only—NA—1 square foot

Dimensions



3-Seat Sofa *continued*

Specification Information

Step 1.

CL3 ☐

Step 2. Upholstery

- 1** 1 fabric ☐
- 2** 1 leather ☐
- 3** 2 fabrics ☐
- 4** 2 leathers ☐
- 5** fabric back, leather seat ☐
- 6** leather back, fabric seat ☐

Step 3. Arms

For 1 fabric (1), 1 leather (2), 2 leathers (4), fabric back, leather seat (5), or leather back, fabric seat (6)

- M** metal arms ☐
- L** leather arms ☐
- W** tablet arm left, metal arm right ☐
- X** metal arm left, tablet arm right ☐
- Y** tablet arm left, leather arm right ☐
- Z** leather arm left, tablet arm right ☐
- B** tablet arms left and right ☐

For 2 fabrics (3)

- M** metal arms ☐
- W** tablet arm left, metal arm right ☐
- X** metal arm left, tablet arm right ☐
- B** tablet arms left and right ☐

Step 4. Casters/Glides

For metal arms (M) or leather arms (L)

- C** front casters, back glides ☐
- G** front and back glides ☐

For tablet arm left, metal arm right (W), metal arm left, tablet arm right (X), tablet arms left and right (B), tablet arm left, leather arm right (Y), or leather arm left, tablet arm right (Z)

- C** front casters, back glides ☐

Step 5. Fire Retardancy

For not fire retardant (), skip this step.*

For 1 fabric (1) or 2 fabrics (3)

- FR** fire retardant ☐

For 1 leather (2), 2 leathers (4), fabric back, leather seat (5), or leather back, fabric seat (6), skip this step.

Prices for Steps 1-5.

		*	FR
CL31M	C	\$4454	5306
	G	\$4410	5262
CL31L	C	\$4752	5608
	G	\$4712	5565
CL31W	C	\$4846	5697
CL31X	C	\$4846	5697
CL31Y	C	\$5001	5854
CL31Z	C	\$5001	5854
CL31B	C	\$5234	6088
CL32M	C	\$4454	—
	G	\$4410	—
CL32L	C	\$4752	—
	G	\$4712	—
CL32W	C	\$4846	—
CL32X	C	\$4846	—
CL32Y	C	\$5001	—
CL32Z	C	\$5001	—
CL32B	C	\$5234	—
CL33M	C	\$4454	5306
	G	\$4410	5262
CL33W	C	\$4846	5697
CL33X	C	\$4846	5697
CL33B	C	\$5234	6088

CL34M	C	\$4454	—
	G	\$4410	—
CL34L	C	\$4752	—
	G	\$4712	—
CL34W	C	\$4846	—
CL34X	C	\$4846	—
CL34Y	C	\$5001	—
CL34Z	C	\$5001	—
CL34B	C	\$5234	—
CL35M	C	\$4454	—
	G	\$4410	—
CL35L	C	\$4752	—
	G	\$4712	—
CL35W	C	\$4846	—
CL35X	C	\$4846	—
CL35Y	C	\$5001	—
CL35Z	C	\$5001	—
CL35B	C	\$5234	—
CL36M	C	\$4454	—
	G	\$4410	—
CL36L	C	\$4752	—
	G	\$4712	—
CL36W	C	\$4846	—
CL36X	C	\$4846	—
CL36Y	C	\$5001	—
CL36Z	C	\$5001	—
CL36B	C	\$5234	—

Step 6. Frame Finish

G1	graphite A	+\$0
MS	metallic silver A	+\$80

Step 7. Tablet Arm Surface Finish

Solid-Color Laminate

For tablet arm left, metal arm right (W), metal arm left, tablet arm right (X), tablet arm left, leather arm right (Y), or leather arm left, tablet arm right (Z)

8Q	folkstone grey A	+\$0
91	white A	+\$0
BU	black umber A	+\$0
WL	sandstone A	+\$0
X1	chalk white A	+\$0

Wood Veneer

For tablet arm left, metal arm right (W), metal arm left, tablet arm right (X), tablet arm left, leather arm right (Y), or leather arm left, tablet arm right (Z)

UL	natural maple A	+\$30
-----------	------------------------------	-------

Solid-Color Laminate

For tablet arms left and right (B)

8Q	folkstone grey A	+\$0
91	white A	+\$0
BU	black umber A	+\$0
WL	sandstone A	+\$0
X1	chalk white A	+\$0

Wood Veneer

For tablet arms left and right (B)

UL	natural maple A	+\$60
-----------	------------------------------	-------

Step 8.

Fabric Back and Seat

For 1 fabric (1) with not fire retardant

Price Category 1	+\$0
Price Category 2	+\$146
Price Category 3	+\$218
Price Category 4	+\$363
Price Category 5	+\$581
Price Category B	+\$436
Price Category C	+\$557
Price Category E	+\$799
Price Category F	+\$944
Price Category G	+\$1452
Price Category H	+\$2033
Price Category I	+\$2541

Fabric Back and Seat

For 1 fabric (1) with fire retardant (FR)

Price Category 1	+\$0
Price Category 2	+\$146
Price Category 3	+\$218

Fabric Back

For 2 fabrics (3) or fabric back, leather seat (5) with not fire retardant

Price Category 1	+\$0
Price Category 2	+\$73
Price Category 3	+\$109
Price Category 4	+\$182
Price Category 5	+\$291
Price Category B	+\$218
Price Category C	+\$279
Price Category E	+\$400
Price Category F	+\$472
Price Category G	+\$726
Price Category H	+\$995
Price Category I	+\$1170

Fabric Back

For 2 fabrics (3) with fire retardant (FR)

Price Category 1	+\$0
Price Category 2	+\$73
Price Category 3	+\$109

Leather Back and Seat

For 1 leather (2) with not fire retardant

Price Category 7 A	+\$720
Price Category 9	+\$2550

Leather Back

For 2 leathers (4) or leather back, fabric seat (6) with not fire retardant

Price Category 7 A	+\$360
Price Category 9	+\$1275

Step 9.

Leather Arms

For 1 fabric (1) or 1 leather (2) with leather arms (L), or tablet arm left, leather arm right (Y), or leather arm left, tablet arm right (Z)

Price Category 7 A	+\$0
Price Category 9	+\$0

Leather Seat

For 2 leathers (4) or fabric back, leather seat (5) with not fire retardant

Price Category 7 A	+\$360
Price Category 9	+\$1275

Fabric Seat

For 2 fabrics (3) or leather back, fabric seat (6) with not fire retardant

Price Category 1	+\$0
Price Category 2	+\$73
Price Category 3	+\$109
Price Category 4	+\$182
Price Category 5	+\$291
Price Category B	+\$218
Price Category C	+\$279
Price Category E	+\$400
Price Category F	+\$472
Price Category G	+\$726
Price Category H	+\$1017
Price Category I	+\$1271

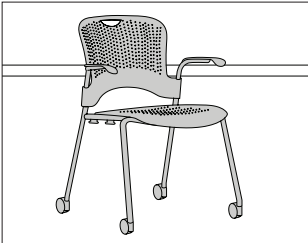
Fabric Seat

For 2 fabrics (3) with fire retardant (FR)

Price Category 1	+\$0
Price Category 2	+\$73
Price Category 3	+\$109

Stacking Chair

WC410
WC420



Product Information

Description

This stacking chair has a tubular steel frame, a molded back that is perforated and contoured, and a 4-leg base with casters or glides. It has 2 seat options: the molded seat is perforated and contoured; the Flexnet™ seat is suspension material. Each chair is breathable and distributes the user's weight evenly. The chair is available with or without arms. All chairs meet CAL 133 requirements.

The chair is lightweight and mobile. The molded chair without arms weighs 9½ pounds and the Flexnet chair with arms weighs 11½ pounds. All styles of this chair can be stacked up to 6-chairs high on the floor and up to 15-chairs high on the Caper® cart. Each chair has a cutout in the back for easy movement.

Notes

Chair is tested and warranted for use by persons 300 pounds and under. Ganging stacking chairs (WC415 or WC425) can be stacked with armless stacking chairs (WC410N or WC420N) on the floor or on a Caper cart. Caper chairs with installed storage basket will not stack. Order storage basket (WC6) separately.

Order optional Caper cart (WC004) separately.

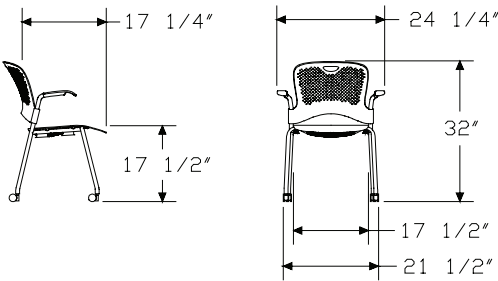
Caper chairs are not recommended for outdoor use.

Glide color is predetermined based on arm finish/arm cap finish. For black (BK) and silver grey (SY), glides are black. For fog (63), glides are fog (63).

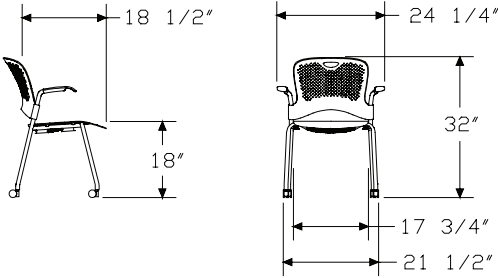
For information on casters and glides, see Casters and Glides in Appendices.

Dimensions

Molded
Seat



FLEXNET
Seat



Stacking Chair *continued*

Specification Information		
Step 1.		
WC4		
Step 2. Seat Style		
10	molded seat	
20	flexnet™ seat	
Step 3. Arms		
N	no arms	
P	fixed arms	
Prices for Steps 1-3.		
WC410 N		\$237
P		\$329
WC420 N		\$389
P		\$481
Step 4. Frame Finish		
BK	black	+\$0
MS	metallic silver	+\$20
Step 5. Seat/Back Finish		
3M	berry blue	+\$0
63	fog	+\$0
79	green apple	+\$0
98	studio white	+\$0
BK	black	+\$0
G1	graphite	+\$0
LMN	lemon	+\$0
RO	red	+\$0
TRQ	turquoise	+\$0
ZK	cappuccino	+\$0
Step 6. Casters/Glides		
Y7	acetal glide, carpet only	+\$0
YX	Floor Saver Glide® insert, hard floors only	+\$20
U4	hard wheel caster, carpet only	+\$30
U5	soft wheel caster, carpet or hard floors	+\$30
DS	2" soft double wheel braking caster, hard floors	+\$40
Step 7. Arm Finish/Arm Cap Finish		
63	fog	+\$0
BK	black	+\$0
SY	silver grey	+\$0

Step 8. Flexnet™ Material	
<i>For flexnet™ seat (20)</i>	
<i>See application chart and textiles list for fabric usage and numbers.</i>	
<i>First 2 digits of number indicate fabric line; remaining digit(s) indicate fabric color.</i>	
Price Category 1	+\$0

Index by Product Name

The Intersect® Portfolio	
2-Seat Sofa	page(s) 27
3-Seat Sofa	32
Butterfly Foldaway Table	9
Clip/Hook	16
Flip Chart Hooks	21
Kotatsu Work Table	13
Lounge Chair	23
Mobile Easel	14
Round Foldaway Table	5
Scow Foldaway Table	11
Square Foldaway Table	7
Stacking Chair	36
Telescoping Screen, 4 Panels	17
Telescoping Screen, 6 Panels	19
Tool Tray	22



Index by Product Number



CL11L	Lounge Chair	page(s) 23	CL23B	
CL11M			CL23M	
CL11W			CL23W	
CL11X			CL23X	
CL11Y			CL24B	
CL11Z			CL24L	
CL12L			CL24M	
CL12M			CL24W	
CL12W			CL24X	
CL12X			CL24Y	
CL12Y			CL24Z	
CL12Z			CL25B	
CL13M			CL25L	
CL13W			CL25M	
CL13X			CL25W	
CL14L			CL25X	
CL14M			CL25Y	
CL14W			CL25Z	
CL14X			CL26B	
CL14Y			CL26L	
CL14Z			CL26M	
CL15L			CL26W	
CL15M			CL26X	
CL15W			CL26Y	
CL15X			CL26Z	
CL15Y			CL31B	3-Seat Sofa 32
CL15Z			CL31L	
CL16L			CL31M	
CL16M			CL31W	
CL16W			CL31X	
CL16X			CL31Y	
CL16Y			CL31Z	
CL16Z			CL32B	
CL21B	2-Seat Sofa	27	CL32L	
CL21L			CL32M	
CL21M			CL32W	
CL21W			CL32X	
CL21X			CL32Y	
CL21Y			CL32Z	
CL21Z			CL33B	
CL22B			CL33M	
CL22L			CL33W	
CL22M			CL33X	
CL22W			CL34B	
CL22X			CL34L	
CL22Y			CL34M	
CL22Z			CL34W	

CL34X	
CL34Y	
CL34Z	
CL35B	
CL35L	
CL35M	
CL35W	
CL35X	
CL35Y	
CL35Z	
CL36B	
CL36L	
CL36M	
CL36W	
CL36X	
CL36Y	
CL36Z	
CP110. Telescoping Screen, 4 Panels	17
CP111. Telescoping Screen, 6 Panels	19
CP190. Flip Chart Hooks	21
CP310. Round Foldaway Table	5
CP311. Square Foldaway Table	7
CP312. Butterfly Foldaway Table	9
CP313. Scow Foldaway Table	11
CP330. Kotatsu Work Table	13
CP820. Mobile Easel	14
CP891. Clip/Hook	16
G7211. Tool Tray	22
WC410 Stacking Chair	36
WC420	

20-Day or Less/Assigned Lead-Time Order Information

20-Day or Less and Assigned Lead-Time Programs

20-day or less and assigned lead-time products are designed for established Herman Miller dealers with pre-approved credit.

Products are distributed from multiple manufacturing facilities across the United States. All products and options not designated by an Assigned Lead-Time icon  will ship in 20 business days or less after being acknowledged by Herman Miller. Products and options designated by an  are on the assigned lead-time program and will ship in 20 days, less than 20 days, or more than 20 days from order acknowledgement.

Ordering Procedure

Please place orders through Order Manager. If this is not available to you, place orders through mail or fax. Verbal purchase orders will not be accepted.

Order Entry fax number for Passage®, 5000 Series, and Meridian® Filing and Storage: (616) 846 9236.

Order Entry fax number for all other products:
(616) 654 3085.

For more information, contact your Customer Care representative at:
(866) 854 3048 EXT 3400.

Shipments and Delivery

Per Herman Miller Terms and Conditions.

Changes and Cancellation

Per Herman Miller Terms and Conditions.



Customer's Own Material Order Information — Workspaces

Customer's Own Material

Program Overview

The Customer's Own Material (COM) program gives you the option of using textiles other than those listed. Herman Miller will test textiles for application to Herman Miller products and will process orders for those with approved COM textiles only. COM textiles are on assigned lead times.

Omni lists an overview of fabrics that have been tested and indicates whether or not they were approved for application to Herman Miller products.

Specific information on the terms and conditions, testing, approval, and ordering process for COM is listed below. Questions about the COM program and requests for assistance may be directed to your COM representative at:

(616) 654 3400

(866) 854 3048 EXT 6543400

Customer's Own Material Warranty

Herman Miller does not warrant COM textiles. COM textiles are tested for application only; they are not tested for performance. The Herman Miller warranty does apply to the underlying products.

Suppliers of COM textiles are responsible for color consistency within commercial tolerances, UV stability, and resistance to soiling and perspiration.

Customer's Own Material Pricing

COM is a Category 1 fabric. There are no application charges for COM fabrics.

Ordering and payment for COM textile yardage are the responsibility of the customer and the textile supplier.

If desired, Herman Miller will purchase COM textiles directly from True Textiles, C.F. Stinson, Luna Textiles, Maharam, and Momentum Textiles to simplify ordering and shipment. For this service, refer to the Supplier Connection program.

Application Note

Herman Miller does not guarantee that Customer's Own Material (COM) fabric patterns will align across panels/tiles or from one screen to the next. We also do not guarantee that COM fabric designs will be positioned consistently in the same location across several panels, tiles, or screens.

Textile Approval

1. Select a COM textile and a Herman Miller product.
2. If your textile is not listed in Omni, obtain a test number from a COM representative at (616) 654 3400. You can also submit your request within Omni. Please have the following information ready before calling: textile name, number, pattern, and the product you will apply it to.
3. Herman Miller will notify you of approval or disapproval within 4 days from receipt of the test yardage.

Ordering Products with COM

1. Refer to the specific products to determine the yardage required for COM textiles.
2. If your textile is not listed in Omni, call a COM representative at (616) 654 3400 or (866) 854 3048 EXT 6543400. The representative will assign an identification number for your textile (ID#) and will verify yardage requirements for your order.

Note: Yardage requirements are based on nondirectional, 54"-wide textiles. 66"-wide textiles are needed for application on 60"-wide products. Additional yardage may be needed due to the unique characteristics of a textile.

3. Enter your order on Order Manager in Omni.
4. Upon receipt of your purchase order, Herman Miller will send you a PO acknowledgment.
5. Arrangements must be made for the textiles to be shipped from the supplier to Herman Miller for application to the Herman Miller products. Textiles must be tagged with the assigned identification number and the roll yardage quantity. See Omni for shipping procedures and current shipping addresses or contact a COM representative at (616) 654 3400 or (866) 854 3048 EXT 6543400.

Products will be scheduled for production when COM textiles are received at Herman Miller. Standard lead times in effect at that time will apply.

Note: If textiles are to be purchased directly by Herman Miller through the Supplier Connection program, Herman Miller will handle the ordering and shipping process and will schedule your order for production upon receipt of your purchase order (dependent on textile availability). Refer to the Supplier Connection program for more information.

Supplier Connection

Program Overview

The Supplier Connection program is a service offered by Herman Miller to purchase approved COM textiles directly from True Textiles, C.F. Stinson, Luna Textiles, Maharam, and Momentum Textiles. When you select a textile through this program, Herman Miller will facilitate the ordering, scheduling, and shipment of the textile directly with the supplier.

Suppliers included in the Supplier Connection program keep an active inventory of textiles that are pre-approved for application to Herman Miller products. Pre-approval applies only to the suitability of a textile for manufacturing and application to a Herman Miller product. Omni provides an overview of fabrics that have been tested and indicates whether or not they were approved for application to Herman Miller products.

Specific information on the terms and conditions, testing, approval, and ordering process for the Supplier Connection program is listed below. Questions and requests for assistance may be directed to your COM representative at:
(616) 654 3400
(866) 854 3048 EXT 6543400

Supplier Connection Warranty

Textiles purchased by Herman Miller through the Supplier Connection program are COM and are not warranted by Herman Miller. COM textiles are tested for application only; they are not tested for performance. The Herman Miller warranty does apply to the underlying products.

Suppliers of COM textiles are responsible for color consistency within commercial tolerances, UV stability, and resistance to soiling and perspiration.

Supplier Connection Pricing

Textiles purchased by Herman Miller through the Supplier Connection program are COM. COM is a Category 1 fabric. There are no application charges for COM fabrics.

Payment for textiles purchased by Herman Miller through the Supplier Connection program is the responsibility of the customer or dealer. Herman Miller will invoice the order at the supplier's prices published at the time of the order.

Textile Approval

1. Refer to Omni to identify the approval status of the textile. If your textile is not listed, contact the COM Department to request testing for application to Herman Miller products.
2. Herman Miller will notify you of approval or disapproval in approximately 4 days from receipt of the test yardage. If the textile is approved, it will be assigned a COM identification number.

Ordering Products with Supplier Connection COM

1. Identify and include the following information on your purchase order:
 - Product number and option
 - Herman Miller's COM identification number
2. Enter your order on Order Manager in Omni.
3. Upon receipt of the purchase order, Herman Miller will process your order and send you a PO acknowledgment. Herman Miller will determine the yardage required to produce your product and will order and schedule for delivery the required textile. Standard lead times in effect at the time the textile is allocated at the supplier will apply to products ordered through this program.

Proprietary Textiles Application Chart — Workspaces

• Available

A Assigned lead-time textile.

See page 3 for exception notes.

		Action Office® Panels/Connectors Action Office/Ethospace® B-Style Storage Action Office B-Style Tackboards Action Office/Ethospace E-Style Storage Ethospace Tiles/Connectors Ethospace Work Surface-Attached Screens Ethospace/Canvas Office Landscape® Privacy Doors Canvas Tiles/Extended Width Tiles Canvas B-/E-Style Storage Canvas Standing Screen and Team Wall Infill Canvas Tackboards Layout Studio® Framed Screen Locale® Display Tackboard Locale Freestanding Screen and Workbase Screen Locale L-Desk/D-Desk Screens Pari™ Screens Prospect™ Exterior Acoustic Pad Public Office Landscape® Screen/Desktop Top Divider Renew™ Link Screens Resolve® Boundary Screens/Flags Resolve Display Screens Resolve Rolling Screens/Canopies Exclave® Tackable Boards and Stowage Tackable Backdrop Exclave Video-Friendly Tackable Boards and Stowage Tackable Backdrop Intersect® Screens Thrive® Personal Side Screen Tu® Wood Storage Cubby Tackboard 5000 Series Storage and Tackboards Seating																														
Price Category 1																																
COM	Customer's Own Material	A	1	1	1	1	1		1	1	1	1	•	1	1	1		1		1	1	1					1	1		3	1	
8A__	Bubbletack™																															
2V__	Chain		•	•	•	•	•		•	22	•	•	•	•	•	•		•			•	•						•		•	3	
8T__	Crossing (85__)		2	2	2	•	•		•	•	2	•	•	•	•	•		•	•		•	•				•	8	•		•	3	18
95__	Gem		2	2	2	•	•		•	•	2	•	•	•	•													•	•	•	3	•
2I__	Grasscloth		•	•	•	•	•		•	•	•	•	•		•	•				•	•							•	•	•	3	
1MN__	Monologue		2	2	2	•	•		•	•	2	•	•	•	•	•		•	•		•	•						•	•	•		•
8B__	Multiscrim™							•																		•						
5T__	Resonance		•	•	•	•	•		•	•	•	•	•	•														•	•	•		
8C__	Scrim Trim																									•						
2M__	Silkworm		•	•	•	•	•		•	•	•	•	•	•	•													•	•	•	3	
22F__	Slant		6		•		•		•	•		•	•	•														•		•	3	
235__	Tailored	A	•	•		•	•		•	•	•	•	•	•														•	•	•		•
1WS__	Whisper		2	2	2	•	•		•	•	2	•	•	•	•	•		•	•		•	•						•	•			•
Price Category 2																																
1CD__	Code		•	•	•	•	•		•	•	•	•	•	•	•												•		•			
3P__	ColorGuard			2		•																										•
51__	Cord		•	•	•	•	•		•	•	•	•	•	•	•													•		•	3	
92__	Crepe		2	•	•	•	•		•	•	•	•	•	•	•			•								•	8	•	•		3	•
22Q__	Fish Net			2	2	•	•		•	•	2	•		•			•			•												•
57__	Frost		•	•	•	•	•		•	•	•	•	•	•	•	•		•		•	•							•	•	•	3	
84__	Grosgrain		4	•	•	•	•		•	•	•	•		•	19													•	19	•	3	
4N__	Horizon		2	2	2	•	•		•	•	•	•	•	•	•													•	•	•	3	
1LM__	Loom		2	2	2	•	•		•	•			•	•	•		•		•	•	•				•		•					•
1HA__	Medley		2	2	2	•	•		•	•	•	•	•	•	•	•	•	•	•	•	•				•	8	•	•				•
3A__	Moiré			2	2	•	•		•	22	2	•	•	•	•		•		•	•	•	•								•	3	•
1RV__	Rivet		2	2	2	•	•		•	•	2	•	•			•		•		•	•	•							•	•		•
43__	Tape									•	•	•	•		•															•		
8R__	Twist (5S__)		5	2	2	•	•		•	•	2	•	•	•	•	•	•		•	•		•	•					•	•	•	3	18
22T__	Well Suited			2		•	•			•	2	•																				•
Price Category 3																																
70__	Bento		2	2	2	•				•	2	•	•		•	•		•		•	•							•		•	3	•
1FB__	Connection		•	•	•	•	•		•	•	•	•	•	•	•	•				•								•	•	•	3	
1FC__	Current		•	•	•	•	•		•	•	•	•	•	•	•	•				•								•	•	•	3	
8Z__	Glaze		•	•	•	•	•		•	•	•	•	•	•	•	•												•	•	•	3	
47__	Ground Cloth®		•	•	•	•	•		•	•	•	•	•	•	•	•		•		•	•	•	14			•	8	•	•	•	3	
5D__	Kira 2		2	2	2	•			•	•	2	•	•	•	•	•		•		•	•	•	14					•	•	•	3	
22R__	Pins and Needles		2	2		•	•		•	•	2	•	•	•	•	•												•				•
8L__	Savannah		•	20	•	•	•		•	•	•	•	•	•	•															•		
8U__	Stitches (5Z__)		2	2	2	•			•	•	2	•	•	•														•		•	3	18
8W__	Strands		•	•	•	•	•		•	•	•	•	•	•	•	•		•		•	•	•						•	•	•	3	
22V__	String Plaid		2	2	2	•	•		•	•	2	•	•	•	•	•		•		•	•	•						•				•

continued on next page

Proprietary Textiles Application Chart — Workspaces

continued

Proprietary Textiles Application Chart — Workspaces																														
<i>continued</i>																														
	Action Office® Panels/Connectors	Action Office/Ethospace® B-Style Storage	Action Office B-Style Tackboards	Action Office/Ethospace E-Style Storage	Ethospace Tiles/Connectors	Ethospace Work Surface-Attached Screens	Ethospace/Canvas Office Landscape® Privacy Doors	Canvas Tiles/Extended Width Tiles	Canvas B-/E-Style Storage	Canvas Standing Screen and Team Wall Infill	Canvas Tackboards	Layout Studio® Framed Screen	Locale® Display Tackboard	Locale Freestanding Screen and Workbase Screen	Locale L-Desk/D-Desk Screens	Pari™ Screens	Prospect™ Exterior Acoustic Pad	Public Office Landscape® Screen/Desk Top Divider	Renew™ Link Screens	Resolve® Boundary Screens/Flags	Resolve Display Screens	Resolve Rolling Screens/Canopies	Exclave® Tackable Boards and Stowage Tackable Backdrop	Exclave Video-Friendly Tackable Boards and Stowage Tackable Backdrop	Intersect® Screens	Thrive® Personal Side Screen	Tu® Wood Storage Cubby Tackboard	5000 Series Storage and Tackboards	Seating	
Price Category 4																														
2X__ Glisten	•	•	•	•	•		•	•	•	•	•	•	•							•					•		•	3		
22L__ Loft A		2	2				•	•	2				•	•	•			•					•	8		•		•	3	
6S__ Quilty	2	2	2	•	•		•	•	2			•	•					•							•	•	•	•	3	•
63__ Sironetta	•	•	•	•	•		•	•		•	•	•	•	•		•		•	•						•	•	•	•	3	
Price Category 5																														
14A__ Hopsak	2	2	2	•	•			•	2	•	•	•	•										•		•		•		•	
Price Category 6																														
No fabrics available at this time.																														

- 1 Refer to price book appendices and Omni for COM information.
- 2 Available on all products except 54" and 60" wide.
- 3 Fabric is railroaded for all widths.
- 4 Not available on Action Office (AO®) acoustical panels.
- 5 (8R__), (8T__), (85__), and (5S__) not available on AO acoustical panels and not available on 54"- or 60"-wide products.
- 6 Not available on Action Office (AO®) connectors, cable management, and spacers.
- 8 Available in select colors. See the "Proprietary Textile Colors — Workspaces" appendix.
- 14 Not available on Resolve flags.
- 18 Available on seating products in select colors. See the "Proprietary Textile Colors — Seating" appendix.
- 19 Not available in Grosgrain (84__) fabric colors 8401, 8405, and 8413.
- 20 Available only on Ethospace B-Style.
- 22 Not available as railroaded application option for Chain (2Voo) and Moiré (3Aoo) on Canvas Extended Width Tiles.
- 24 Not available on Ethospace cable access tile, cable channel tile, or beltline face tile.

Application Note: Herman Miller cannot guarantee material/pattern alignment in adjacent products. For example, a fabric's pattern may not align from one screen to the next, or from one panel to the next.

Proprietary Textile Colors — Workspaces

Price Category 1

Customer's Own Material	
See Order Information in Appendices.	
Assigned lead-time textile. A	

Bubbletack™	
100% polyester	
8A01	Seashell White
8A02	Pearl Grey
8A05	Dune Beige
8A07	Pebble Beige
8A09	Olive Green
8A13	Slate Purple
8A19	Spa Blue
8A24	Sable Grey
8A27	Summer White
8A28	Moth Grey
8A29	Tea Leaf Grey
8A30	Blue Grey
8A31	Dusty Bronze
8A32	Slate Blue
8A33	Caramel Beige
8A34	Kiwi Green

Chain	
66" wide	
100% recycled polyester	
2V01	Pearl
2V02	Oyster
2V03	Wheat
2V04	Linen
2V05	Wicker
2V06	Bamboo
2V07	Sage
2V08	Spring Wood
2V09	Iceberg

Crossing	
54" wide	
86% antimony-free polyester	
14% polyester	
8T03	Wicker *
8T04	Porcelain *
8T05	Warm Grey *
8T06	Sepia
8T07	Pumpkin
8T08	Copper
8T09	Cranberry
8T10	Tomato
8T11	Mulberry
8T12	Plum
8T13	Green Apple
8T14	Loden
8T15	Spruce
8T16	Periwinkle
8T17	Cerulean
8T18	Indigo
8T19	Shale *
8T20	Brownstone
8T21	Bark
8T22	Tin *
8T23	Graphite
8T24	Black

Crossing	
For workspaces products only.	
54" wide	
86% antimony-free polyester	
14% polyester	
8501	Ivory *
8502	Oyster *

* Colors available on Exclave®
Video-friendly Tackable
Boards and Stowage Tackable
Backdrop

Gem	
54" wide	
100% antimony-free polyester	
9501	Sesame
9502	Tangerine
9503	Red
9504	Red Violet
9505	Mulberry
9506	Java
9507	Twilight
9508	Bayou
9509	Iris
9510	Berry Blue
9511	Aqua Green
9512	Green Apple
9513	Spruce
9514	Black
9515	Slate Grey
9516	Fog

Grasscloth	
66" wide	
100% recycled polyester	
2101	Silver Birch
2102	Pampas
2103	Sedge
2107	Lea
2108	Taro
2109	Steam Grey
2110	Cayenne
2111	Bottle Green
2112	Surf
2113	Gravel

Monologue	
54" wide	
56% recycled polyester	
44% polyester	
1MN01	Linen
1MN02	Alabaster
1MN03	Truffle
1MN04	Folkstone
1MN05	Silver Pine
1MN06	Slate
1MN07	Seed
1MN08	Yellow Oxide
1MN09	Persimmon
1MN10	Tundra
1MN11	Meadow
1MN12	Blue Sky
1MN13	Blue Spruce
1MN14	Deep Sea

Multiscrim™	
60" wide	
100% polyester	
8B01	Seashell White
8B02	Pearl Grey
8B05	Dune Beige
8B07	Pebble Beige
8B09	Olive Green
8B15	Slate Purple
8B19	Spa Blue
8B24	Sable Grey
8B27	Summer White
8B28	Moth Grey
8B29	Tea Leaf Grey
8B30	Blue Grey
8B31	Dusty Bronze
8B32	Slate Blue
8B33	Caramel Beige
8B34	Kiwi Green

Proprietary Textile Colors — Workspaces

continued

Price Category 1

continued

Resonance	
66" wide	
100% polyester	
5T04	Greige
5T05	Porcelain
5T06	Alabaster
5T15	Iris
5T28	Sugar
5T47	Tobacco
5T54	Saltbush
5T57	Seed
5T58	Sepia
5T59	Tundra
5T60	Iceberg
5T61	Black
5T62	Chamois
5T63	Citrus
5T64	Tangerine
5T65	Red
5T66	Wild Berry
5T67	Boysenberry
5T68	Pistachio
5T69	Green Apple
5T70	Forest
5T71	Jade
5T72	Blue Green
5T73	Bright Turquoise
5T74	Twilight
Scrim Trim	
61" wide	
82% polyester	
18% spandex	
8C01	Seashell White
8C02	earl Grey
8C22	Winter Grey
8C24	Sable Grey

Silkworm	
66" wide	
58% recycled polyester	
42% polyester	
2M01	Cocoon
2M02	Pongee
2M03	Saffron
2M04	Tussah
2M05	Ceylon
2M06	Jasmine
2M07	Shale
2M08	Monsoon
Slant	
66" wide	
51% polyester	
49% recycled polyester	
22F01	Beech Nut
22F02	Chamois
22F03	Chartreuse
22F04	Pesto
22F05	Peacock
22F06	Neptune
22F07	Blueberry
22F08	Boysenberry
22F09	Magenta
22F10	Pumpkin
22F11	Cranberry
22F12	Silver Birch
22F13	Bluestone
22F14	Truffle
22F15	Shale

Tailored	
Assigned lead-time textile. ^A	
54" wide	
56% polyester	
44% recycled polyester	
23501	Studio White
23502	Sugar
23503	Tomato
23504	Orchid
23505	Boysenberry
23506	Chive
23507	Bluegrass
23508	Cobalt
23509	Cadet
23510	Fog
23511	Graphite
23512	Black
23513	Coffee
Whisper	
54" wide	
73% recycled polyester	
27% polyester	
1WS01	Sand Dollar
1WS02	Pebble
1WS03	Silver Birch
1WS04	Iceberg
1WS05	Silver Pine
1WS06	Carbon
1WS07	Cumin
1WS08	Adobe
1WS09	Strawberry
1WS10	Blush
1WS11	Eggplant
1WS12	Willow
1WS13	Sea Grass
1WS14	Pool
1WS15	Blueberry

Price Category 2

Code	
66" wide	
100% Repreve recycled polyester	
1CD01	Linen
1CD02	Khaki
1CD03	Iceberg
1CD04	Zinc
1CD05	Blue Black
ColorGuard	
54" wide	
100% vinyl	
3P01	Grey
3P02	Navy
3P03	Spruce ^A
3P08	Blueberry ^A
3P12	Black Plum ^A
3P14	Black
3P19	Slate
3P31	Horizon Blue ^A
3P33	Pumice
3P54	Candy Apple ^A
3P72	Allspice ^A
3P96	Manzanita ^A
3P97	Fudge ^A
3PB2	Sea Grass ^A
3PB5	Vizcaya Palm ^A
3PB9	Neptune ^A
3PC7	Bucksuede ^A
3PD4	Otter ^A

^A Assigned lead-time color.

Proprietary Textile Colors — Workspaces

continued

Price Category 2

continued

Cord	
66" wide	
51% antimony-free polyester	
49% polyester	
5101	Ivory
5102	White Ash
5103	Linen
5104	Bamboo
5105	Sepia
5106	Wicker
5107	Sesame
5108	Kiwi Green
5109	Bayou
5110	Shade
5111	Spring Wood
5112	Summer White

Crepe	
54" wide	
100% recycled polyester	
9201	Licorice
9203	Smoke
9207	Cherry
9209	Claret
9212	Raisin
9218	Aquamarine
9223	Cadet
9241	Beachglass
9243	Midnight
9244	Artichoke
9248	Warm White *
9249	Stone *
9250	Earth
9251	Fog *
9252	Slate Grey
9253	Yellow Dark
9254	Coral
9255	Blush Grey *
9256	Wild Berry
9257	Clover
9258	Caribbean
9259	Cerulean
9260	Brownstone

* Colors available on Exclave®
Video-friendly Tackable Boards
and Stowage Tackable Backdrop

Crepe continued	
9261	Shale
9262	Graphite
9263	Tomato
9264	Green Apple

Fish Net	
55" wide	
100% recycled polyester	
22Q01	Oyster
22Q02	Stone
22Q03	Citrus
22Q04	Curry
22Q05	Chipotle
22Q06	Cherry
22Q07	Fuschia
22Q08	Claret
22Q09	Purple
22Q10	Clover
22Q11	Pesto
22Q12	Peacock
22Q13	Lagoon
22Q14	Twilight
22Q15	Bluestone
22Q16	Storm
22Q17	Black
22Q18	Cocoa

Frost	
66" wide	
100% recycled polyester	
5701	Bisque
5702	Abalone
5703	Porcelain
5704	Honey
5705	Iceberg
5706	Sage
5707	Reed
5708	Steam Grey
5709	Gunmetal
5710	Sable Grey

Grosgrain	
66" wide	
100% recycled polyester	
8401	Pearl *
8402	White Ash
8403	Warm Grey
8404	Khaki
8405	Oyster *
8406	Celadon
8408	Spa Blue
8409	Bud
8410	Kiwi Green
8411	Bayou
8412	Tin
8413	Iceberg *

* Colors not available on Canvas
Dock Mounted Screens, Locale®
Workbase Screen, Public Office
Landscape® Screen/Desk Top
Divider, and Thrive® Personal
Side Screen.

Horizon	
54" wide	
65% antimony-free polyester	
35% polyester	
4N01	Rye Grass
4N02	Sugar Pine
4N03	Silver Pine
4N04	White Ash
4N05	Spring Wood
4N06	Tamarack
4N07	Mushroom
4N08	Haystack
4N09	Oat Grass
4N10	Forest Moss
4N11	Hickory
4N12	Beech Nut
4N13	Pine Cone
4N14	Poplar
4N15	Elderberry

Loom	
54" wide	
100% polyester	
1LM01	Linen
1LM02	Brown Sugar and Spice
1LM03	Brick and Mortar
1LM04	Salt and Pepper
1LM05	Black
1LM06	Lemongrass
1LM07	Poppy
1LM08	Wild Berry
1LM09	Loden
1LM10	Jade
1LM11	Deep Sea

Medley	
54" wide	
100% polyester	
1HA01	Stone *
1HA02	Trail
1HA03	Charcoal
1HA04	Cinder
1HA05	Citrus
1HA06	Papaya
1HA07	Chutney
1HA08	Tundra
1HA09	Feather Grey *
1HA10	Chartreuse
1HA11	Loden
1HA12	Peacock
1HA13	Bayou *
1HA14	Blue Grotto
1HA15	Blueberry
1HA22	Khaki
1HA23	Pewter
1HA24	Yellow Oxide
1HA25	Vintage Rose
1HA26	Raspberry
1HA27	Acai Berry

* Colors available on Exclave®
Video-friendly Tackable Boards
and Stowage Tackable Backdrop

Proprietary Textile Colors — Workspaces

continued

Price Category 2

continued

Moiré

54" wide
100% recycled polyester

3A01	Concrete
3A02	Biscotti
3A03	Rattan
3A04	Chambray
3A05	Fern
3A08	Violet
3A09	Zin
3A10	Curry
3A11	Spice
3A12	Cork

Rivet

54" wide
100% recycled polyester

1RV01	Twig
1RV02	Deep Clay
1RV03	Woodrose
1RV04	Otter
1RV05	Hemlock
1RV06	Olive
1RV07	Lagoon
1RV08	Deep Sea
1RV09	Charcoal
1RV10	Grey Brindle

Tape

66" wide
52% polypropylene
48% recycled polyester

4301	Pearl
4302	Oyster
4303	Wicker
4304	Reed
4306	Celadon
4307	Alabaster
4308	Bamboo
4309	Feather Grey
4310	Iceberg

Twist

54" wide
80% antimony-free polyester
13% recycled polyester
7% polyester

8R05	Wicker
8R10	Poppy
8R14	Tin
8R15	Shale
8R16	Graphite
8R17	Birch
8R18	Sepia
8R22	Blueberry
8R23	Green Apple
8R26	Gunmetal
8R27	Cinder
8R28	Citrus
8R29	Pekoe
8R30	Tangerine
8R31	Red Plum
8R32	Wisteria
8R33	Forest
8R34	Jade Dark
8R35	Waterfall
8R36	Midnight Blue
8R37	arbon Dark

Twist

For workspaces products only.
54" wide
80% antimony-free polyester
13% recycled polyester
7% polyester

5S01	Pearl
5S02	Ivory
5S03	Oyster

Well Suited

55" wide
79% polyester
21% recycled polyester

22T01	Oyster
22T02	Raffia
22T03	Peppermint
22T04	Wild Berry
22T05	Spring Green
22T06	Mint
22T07	Periwinkle
22T08	Cool Grey
22T09	Citrus
22T10	Pumpkin
22T11	Red
22T12	Fuschia
22T13	Orchid
22T14	Chartreuse
22T15	Green Apple
22T16	Jade
22T17	Peacock
22T18	Blueberry
22T19	Bluestone
22T20	Mink

Price Category 3

Bento

54" wide
100% antimony-free polyester

7001	Frost
7002	Linen
7003	Khaki
7004	Truffle
7005	Grey Black
7006	Pumpkin
7007	Cranberry
7008	Everglade
7009	Cobalt

Connection

66" wide
100% antimony-free polyester

1FB1	Oyster
1FB2	Linen
1FB3	Iceberg
1FB4	Silver Pine
1FB5	Apricot
1FB6	Cumin
1FB7	Green Apple
1FB8	Slate Blue
1FB9	Metal

Proprietary Textile Colors — Workspaces

continued

Price Category 3

continued

Current	
66" wide	
100% antimony-free polyester	
1FC1	Oyster
1FC2	Linen
1FC3	Iceberg
1FC4	Silver Pine
1FC5	Apricot
1FC6	Cumin
1FC7	Green Apple
1FC8	Slate Blue
1FC9	Metal

Glaze	
66" wide	
100% recycled polyester	
8Z01	Wicker
8Z02	Honey
8Z03	Porcelain
8Z04	Celadon
8Z06	Rye
8Z07	Frost
8Z08	Silver Birch

Ground Cloth®	
66" wide	
100% polyester	
4701	Vapor Grey
4721	Warm White *
4722	Fog *
4723	Straw *
4724	Red Orange *
4725	Wild Berry *
4726	Green Apple *
4727	Caribbean *
4728	Midnight *
4729	Cappuccino *

* Colors available on Exclave®
Video-friendly Tackable Boards
and Stowage Tackable Backdrop

Kira 2	
54" wide	
100% recycled polyester	
5D11	Flaxen
5D12	Papyrus
5D13	Oasis
5D14	Incense
5D15	Ash
5D16	Falcon

Pins and Needles	
58" wide	
76% recycled polyester	
24% polyester	
22R01	Day and Night
22R02	Night and Day

Savannah	
66" wide	
76% recycled polyester	
24% polypropylene	
8L01	Pearl
8L02	Oyster
8L03	Wheat
8L04	Jute
8L05	Bamboo
8L06	Metal
8L07	Linen
8L08	Celadon
8L09	Moss
8L10	Frost
8L11	Shale
8L12	Pewter

Stitches	
54" wide	
54% polyester	
46% recycled polyester	
8U02	Rye
8U03	Khaki
8U04	Honey
8U05	Cattail
8U08	Cool Grey
8U09	Slate Blue
8U11	Evening Blue
8U12	Charcoal
8U13	Kiwi Green
8U16	Cocoa
8U17	Seed

Stitches	
For workspaces products only.	
54" wide	
54% polyester	
46% recycled polyester	
5Z01	White Ash

Strands	
66" wide	
100% recycled polyester	
8W01	Pebble
8W02	Porcelain
8W03	Taupe
8W04	Honey
8W05	Khaki
8W06	Rye
8W07	Wicker
8W08	Tin
8W09	Cool Grey

String Plaid	
54" wide	
100% recycled polyester	
22V01	Warm White on Khaki
22V02	Mint on Yellow Green
22V03	Mist on Blue Grey
22V04	Sky Blue on Red
22V05	Lime on Magenta
22V06	Bright Green on Green
22V07	Aqua Blue on Cerulean
22V08	Ivory on Black

Proprietary Textile Colors — Workspaces

continued

Price Category 4

Glisten	
66" wide	
84% polyester	
16% recycled polyester	
2X02	Rye
2X05	Iceberg
2X09	Pewter
2X10	Ash
Loft	
Assigned lead-time textile. A	
54" wide	
100% wool	
22L01	Heathered Light Green
22L02	Heathered Dark Green
22L03	Heathered Turquoise
22L04	Heathered Navy
22L05	Heathered Orange
22L06	Heathered Red
22L07	Heathered Tan *
22L08	Heathered Grey *
22L09	Heathered Blue *
22L10	Heathered Brown
22L11	Heathered Dark Grey
22L12	Heathered Denim

* Colors available on Exclave®
Video-friendly Tackable Boards
and Stowage Tackable Backdrop

Quilty	
56" wide	
100% antimony-free polyester	
GreenShield	
6S03	Khaki
6S04	Straw
6S07	Brick
6S10	Mink
6S11	Green Apple
6S13	Indigo
6S14	Zinc
6S15	Slate
6S16	Beachwood
6S17	Paprika
6S18	Plum
6S19	Juniper
6S20	Grey Black

Sironetta	
66" wide	
100% recycled polyester	
6301	Acapella
6302	Sonata
6303	Interlude
6304	Legato
6308	Harmony
6309	Ensemble

Price Category 5

Hopsak	
56" wide	
100% recycled polyester	
14A20	Black
14A22	Raw Umber Dark
14A26	Grey Blue Dark
14A30	Sepia Dark
14A38	Emerald Dark
14A39	Yellow Dark
14A40	Orange
14A41	Sienna
14A42	Olive Green Dark
14A43	Crimson
14A44	Crimson Dark Dark
14A45	Violet Dark
14A46	Pink Dark Dark
14A47	Ultramarine Dark
14A48	Cobalt Blue
14A49	Terra Cotta
14A50	Ochre Dark

Maharam® Application Chart — Workspaces

•Available

See below for exception notes.

Maharam textiles are on assigned lead times. A

	Action Office® Panels/Connectors	Action Office/Ethospace® B-Style Storage	Action Office/Ethospace B-Style Tackboards	Action Office/Ethospace E-Style Storage	Ethospace Tiles/Connectors	Ethospace/Canvas Office Landscape® Privacy Doors	Canvas Tiles/Extended Width Tiles	Canvas B-/E-Style Storage	Canvas Tackboards	Locale® Freestanding Screen and Workbase Screen	Pari™ Screens	Public Office Landscape® Screen/Desk Top Divider	Renew™ Link Screens	Resolve® Boundary Screens/Flags	Resolve Display Screens	Resolve Rolling Screens/Canopies	Intersect® Screens	Thrive™ Personal Side Screen	5000 Series Storage	5000 Series Tackboards	Seating
Price Category 1-2																					
No fabrics available at this time.																					
Price Category 3																					
ZM2__Meld - Maharam	2	2	2	•	•	•	•	•	•	•	•	•	•				•	•			
Price Category 4-9																					
No fabrics available at this time.																					
Price Category A																					
No fabrics available at this time.																					
Price Category B																					
VQ__Crisp - Maharam	5	•	•	•	12		•	•	•								•		3	3	
VM__Medium - Maharam		2	2				•	20	•								•		3	•	
TI__Messenger - Maharam *		2	2	•	12	•	•	2	•										3	3	•
Price Category C																					
Z27__Manner - Maharam	2	2	2	2	•		•	2	•										3	3	•
Z3__Metric - Maharam		2	2				•		•								•		3	3	•
TT__Parallel - Maharam	7	•	•		•	•	•	18	•								•			3	
Price Category D																					
ZMD__Mode - Maharam	2																				•
Z2R__Reply - Maharam	•	•	•	•		•	•										•		3		
ZS3__Spiral - Maharam	•	•	•	•	•		•	•	•												
Z34__Unit - Maharam	•						•		•										3	3	
Price Category E																					
ZF3__Flock - Maharam										•	•	•	•								
ZGT__Glint - Maharam	2	2	2	2	2		•	2	•												
Z25__Hum - Maharam	11	2		2	•		•	2											3		
ZM1__Morse - Maharam	•	•	•	•	•		•	•	•												
Z32__Skein - Maharam	2	2	2	2	•		•	2	•										3	3	•
ZSC__Sketch - Maharam	•	•	•	•	•		•	•	•												
Price Category F																					
ZA1__Adjourn - Maharam	•	•	•	•	•			•	•												
VS__Crush - Maharam			2	•				19									•		3	3	•
Z29__Plait - Maharam	2	2	2	2	•		•	2	•										3	3	•
ZS2__Sharkskin 2 - Maharam	2	2	2	2	2		•	2	•												
Price Category G																					
ZT4__Ticker - Maharam	2	2	2	2	2		•	2	•												•
Price Category H-Z																					
No fabrics available at this time.																					

* Available in select colors on 20-day lead-time. Refer to “Maharam Colors - Workspaces” for 20-day colors.

- | | |
|---|--|
| <p>2 Available on all products except 54” and 60” wide.</p> <p>3 Fabric is railroaded for all widths.</p> <p>5 Not available on AO partial-glazed panels.</p> <p>7 Not available on AO acoustical panels; not available on AO2 cable management panel face.</p> | <p>11 Available on AO products except 54” wide and 60” wide; not available on AO connectors.</p> <p>12 Not available on Ethospace tackable tiles.</p> <p>18 Not available on Canvas E-style storage.</p> <p>19 Not available on Canvas B-style storage.</p> <p>20 Not available on Canvas E-style storage or 60”-wide B-style storage.</p> |
|---|--|

Application Note: Herman Miller cannot guarantee material/pattern alignment in adjacent products. For example, a fabric’s pattern may not align from one screen to the next, or from one panel to the next.



Maharam® Colors — Workspaces

Price Category 1-2

No fabrics available at this time.

Price Category 3

Meld – Maharam

54" wide
68% post-consumer recycled polyester
32% polyester
PFOA-Free stain resistant

ZM201/466387-201 Vast
ZM202/466387-202 Panda
ZM203/466387-203 Skyline
ZM204/466387-204 Knight
ZM205/466387-205 Quill
ZM206/466387-206 Pipe
ZM207/466387-207 Grate
ZM208/466387-208 Gloss
ZM209/466387-209 Bulb
ZM210/466387-210 Bride
ZM211/466387-211 Stark
ZM212/466387-212 Seashell
ZM213/466387-213 Antler
ZM214/466387-214 Crater
ZM215/466387-215 Perennial
ZM216/466387-216 Mulberry
ZM217/466387-217 Fuchsia
ZM218/466387-218 Amethyst
ZM219/466387-219 Merlot
ZM220/466387-220 Magma
ZM221/466387-221 Rooster
ZM222/466387-222 Heat
ZM223/466387-223 Clementine
ZM224/466387-224 Fox
ZM225/466387-225 Kiss
ZM226/466387-226 Bare
ZM227/466387-227 Blonde
ZM228/466387-228 Mimosa
ZM229/466387-229 Comet
ZM230/466387-230 Honeydew
ZM231/466387-231 Wild
ZM232/466387-232 Vine
ZM233/466387-233 Seed
ZM234/466387-234 Kale

Meld continued

ZM235/466387-235 Waterfall
ZM236/466387-236 Nordic
ZM237/466387-237 Reef
ZM238/466387-238 Wave
ZM239/466387-239 Isle
ZM240/466387-240 Creek
ZM241/466387-241 Mariner
ZM242/466387-242 Globe
ZM243/466387-243 Spa

Price Category 4-9

No fabrics available at this time.

- Maharam textiles are on assigned lead times [A](#).
- Fabric numbers are listed as Herman Miller fabric number/Maharam fabric number.

Price Category A

Price Category B

No fabrics available at this time.

Crisp – Maharam	
66" wide	
100% polyester	
VQ02/901420-002	Oyster
VQ05/901420-005	Quahaug
VQ13/901420-013	Admiral
VQ14/901420-014	Thunder
VQ21/901420-021	Graphite
VQ22/901420-022	Lychee
VQ23/901420-023	Persimmon
VQ24/901420-024	Kimchi
VQ25/901420-025	Marigold
VQ26/901420-026	Brut
VQ27/901420-027	Chartreuse
VQ28/901420-028	Celadon
VQ29/901420-029	Surf
VQ30/901420-030	Marble
VQ31/901420-031	Boulder
VQ32/901420-032	Bell
VQ33/901420-033	Ferry
VQ34/901420-034	Sapphire
VQ35/901420-035	Carbon
VQ36/901420-036	Owl
VQ37/901420-037	Agate

Medium – Maharam	
54" wide	
100% polyester	
VM01/463490-001	Raven
VM02/463490-002	Smoke
VM03/463490-003	Alloy
VM04/463490-004	Flax
VM06/463490-006	Bark
VM07/463490-007	Espresso
VM08/463490-008	Pecan
VM12/463490-012	Pumpkin
VM13/463490-013	Persimmon
VM14/463490-014	Laser
VM16/463490-016	Port
VM22/463490-022	Marina
VM29/463490-029	Pistachio
VM32/463490-032	Prospect
VM36/463490-036	Delight
VM39/463490-039	Nautical
VM40/463490-040	Pool
VM44/463490-044	Washed
VM45/463490-045	Sculpture
VM46/463490-046	Thatched
VM47/463490-047	Hike
VM48/463490-048	Tangle
VM49/463490-049	Pacific
VM50/463490-050	Cosmic
VM51/463490-051	Cascade
VM52/463490-052	Blackberry
VM53/463490-053	Nasturtium
VM54/463490-054	Wooded

Messenger – Maharam	
54" wide	
78% recycled polyester	
15% polyester, 7% nylon	
TI01/458640-001	Balsa
TI06/458640-006	Tobacco
TI07/458640-007	Shadow *
TI08/458640-008	Bayou *
TI10/458640-010	Zinc
TI24/458640-024	Poppy

Messenger continued	
TI25/458640-025	Mao
TI29/458640-029	Onyx
TI31/458640-031	Cloud *
TI38/458640-038	Depth *
TI40/458640-040	Nile
TI41/458640-041	Azure *
TI45/458640-045	Cactus *
TI46/458640-046	Ice *
TI48/458640-048	Neon *
TI50/458640-050	Hydrangea *
TI51/458640-051	Lilac
TI52/458640-052	Chestnut
TI53/458640-053	Tangelo
TI54/458640-054	Lumine *
TI58/458640-058	Snow
TI59/458640-059	Fennel
TI60/458640-060	Peridot *
TI61/458640-061	Capri
TI62/458640-062	Ultramarine
TI63/458640-063	Squall
TI66/458640-066	Cassis
TI67/458640-067	Aster
TI68/458640-068	Spice
TI69/458640-069	Cherry
TI70/458640-070	Vibrant
TI71/458640-071	Satsuma *
TI72/458640-072	Maize
TI76/458640-076	Fossil
TI77/458640-077	Ash
TI78/458640-078	Tusk
TI79/458640-079	Oyster
TI80/458640-080	Pensive
TI81/458640-081	Husk
TI82/458640-082	Fireside
TI83/458640-083	Chili
TI84/458640-084	Robust
TI85/458640-085	Beyond
TI86/458640-086	Voyage
TI87/458640-087	Everglade
TI88/458640-088	Electric

* Colors available on
20-day lead time.

- Maharam textiles are on assigned lead times [\[A\]](#).
- Fabric numbers are listed as Herman Miller fabric number/Maharam fabric number.

Maharam® Colors — Workspaces

continued

Price Category C

Manner - Maharam	
54" wide	
100% recycled polyester	
Z2701/466177-001	Magic
Z2702/466177-002	Carob
Z2703/466177-003	Porpoise
Z2704/466177-004	Flint
Z2705/466177-005	Hush
Z2706/466177-006	Nuance
Z2707/466177-007	Thicket
Z2708/466177-008	Cocoa
Z2709/466177-009	Pathway
Z2710/466177-010	Cola
Z2711/466177-011	Ember
Z2712/466177-012	Wagon
Z2713/466177-013	Ablaze
Z2714/466177-014	Peel
Z2715/466177-015	Penny
Z2716/466177-016	Butterscotch
Z2717/466177-017	Harvest
Z2718/466177-018	Lioness
Z2719/466177-019	Caper
Z2720/466177-020	Parakeet
Z2721/466177-021	Greenway
Z2722/466177-022	Aquatic
Z2723/466177-023	Cottage
Z2724/466177-024	Dahlia
Z2725/466177-025	Vivid
Z2726/466177-026	Basin
Z2727/466177-027	Schooner

Metric – Maharam	
54" wide	
51% recycled polyester	
49% polyester	
Z301/466014-001	Phantom
Z302/466014-002	Fog
Z303/466014-003	Fleece
Z304/466014-004	Sourdough
Z305/466014-005	Toffee
Z306/466014-006	Driftwood
Z307/466014-007	Mineral
Z308/466014-008	Bittersweet
Z309/466014-009	Arabica
Z310/466014-010	Cerise
Z311/466014-011	Brick
Z312/466014-012	Cardinal
Z313/466014-013	Lava
Z314/466014-014	Oriole
Z315/466014-015	Cedar
Z317/466014-017	Caramel
Z318/466014-018	Pollen
Z319/466014-019	Tupelo
Z320/466014-020	Alligator
Z321/466014-021	Envy
Z322/466014-022	Bonsai
Z323/466014-023	Tar
Z324/466014-024	Anchor
Z325/466014-025	Twilight
Z326/466014-026	Admiral
Z327/466014-027	Seaport
Z328/466014-028	Scuba

Parallel — Maharam	
66" wide	
100% recycled polyester	
TT01/901180-001	Chalk
TT02/901180-002	Argent
TT03/901180-003	Fog
TT11/901180-011	Cadet
TT17/901180-017	Sourdough
TT22/901180-022	Sterling
TT23/901180-023	Linen
TT24/901180-024	Pea

Price Category D

Mode – Maharam	
54" wide	
80% post-consumer recycled polyester	
20% polyester	
PFOA-Free stain resistant finish	
ZMD01/466337-001	Stroll
ZMD02/466337-002	Intaglio
ZMD03/466337-003	Ominous
ZMD04/466337-004	Machine
ZMD05/466337-005	Talus
ZMD06/466337-006	Marsh
ZMD07/466337-007	Hollow
ZMD08/466337-008	Sycamore
ZMD09/466337-009	Clavicle
ZMD10/466337-010	Billygoat
ZMD11/466337-011	Spindle
ZMD12/466337-012	Lemon
ZMD13/466337-013	Oxeye
ZMD14/466337-014	Henge
ZMD15/466337-015	Goldenrod
ZMD16/466337-016	Cottontail
ZMD17/466337-017	Lioness
ZMD18/466337-018	Oriole
ZMD19/466337-019	Rust
ZMD20/466337-020	Carotene
ZMD21/466337-021	Blush
ZMD22/466337-022	Vermilion
ZMD23/466337-023	Alder
ZMD24/466337-024	Kermes
ZMD25/466337-025	Barberry
ZMD26/466337-026	Petal
ZMD27/466337-027	Valley
ZMD28/466337-028	Odyssey
ZMD29/466337-029	Ballpoint
ZMD30/466337-030	Toile
ZMD31/466337-031	Paradise
ZMD32/466337-032	Angelfish
ZMD33/466337-033	Denim
ZMD34/466337-034	Crush
ZMD35/466337-035	Jetty
ZMD36/466337-036	Saltwater
ZMD37/466337-037	Mallard
ZMD38/466337-038	Celtic

Mode continued	
ZMD39/466337-039	Eucalyptus
ZMD40/466337-040	Bonsai
ZMD41/466337-041	Sassafras
ZMD42/466337-042	Yucca
ZMD43/466337-043	Lichen

Reply - Maharam	
66" wide	
100% polyester	
Z2R1/901880-001	Canvas
Z2R5/901880-005	Pewter
Z2R6/901880-006	Lapis
Z2RB/901880-011	Adobe
Z2RD/901880-013	Beacon

Spiral - Maharam	
66" wide	
100% polyester	
ZS301/901882-001	Chalk
ZS302/901882-002	Birch
ZS303/901882-003	Wheat
ZS304/901882-004	Mica
ZS305/901882-005	Pavement
ZS306/901882-006	Graphite

Unit - Maharam	
66" wide	
100% recycled polyester	
Z3401/901889-001	Seawall
Z3402/901889-002	Limestone
Z3403/901889-003	Aluminum
Z3404/901889-004	Snow
Z3405/901889-005	Tusk
Z3406/901889-006	Nautilus
Z3407/901889-007	Beech
Z3408/901889-008	Driftwood
Z3409/901889-009	Cocoa

- Maharam textiles are on assigned lead times [A](#).
- Fabric numbers are listed as Herman Miller fabric number/Maharam fabric number.

Price Category E

Flock - Maharam	
63" wide	
100% polyester	
ZF301/901892-001	Calm
ZF302/901892-002	Course
ZF303/901892-003	Highlight
ZF304/901892-004	Roe
ZF305/901892-005	Poppy
ZF306/901892-006	Briefcase
ZF307/901892-007	Monkstrap
ZF308/901892-008	Quag
ZF309/901892-009	Pistachio
ZF310/901892-010	Froth
ZF311/901892-011	Celadon
ZF312/901892-012	Highsea
ZF313/901892-013	China
ZF314/901892-014	Victorian
ZF315/901892-015	Commander
ZF316/901892-016	Raven
ZF317/901892-017	Aluminum

Glint - Maharam	
54" wide	
59% polyolefin	
32% post-industrial recycled polyester	
9% post-consumer recycled polyester	
PFOA-Free stain resistant finish	
Acrylic backing	
ZGT01/901380-001	Ice
ZGT02/901380-002	Oyster
ZGT03/901380-003	Aluminum
ZGT04/901380-004	Placid
ZGT05/901380-005	Patina
ZGT06/901380-006	Midas
ZGT07/901380-007	Medal

Hum - Maharam	
54" wide	
73% polyester	
27% recycled polyester	
Z2501/901890-001	Ash
Z2502/901890-002	Birch
Z2503/901890-003	Sandbar
Z2504/901890-004	Scallop
Z2505/901890-005	Kernel
Z2506/901890-006	Thyme
Z2507/901890-007	Caledon
Z2508/901890-008	Tide
Z2509/901890-009	Hearth
Z2510/901890-010	Postal
Z2511/901890-011	Briar
Z2512/901890-012	Molten

Morse - Maharam	
66" wide	
100% post-industrial recycled polyester	
ZM101/901720-001	Talc
ZM104/901720-004	Cliff

Skein - Maharam	
54" wide	
56% recycled polyester	
44% polyester	
Z3201/466170-001	Burrow
Z3202/466170-002	Thatch
Z3204/466170-004	Sumac
Z3205/466170-005	Pomegranate
Z3206/466170-006	Cavern
Z3208/466170-008	Cinder
Z3209/466170-009	Dock
Z3210/466170-010	Cadet
Z3211/466170-011	Marsh

Sketch - Maharam	
66" wide	
52% post-consumer recycled polyester	
48% post-industrial recycled polyester	
ZSC01/901780-001	Macaroon
ZSC02/901780-002	Cashew
ZSC03/901780-003	Toffee
ZSC05/901780-005	Amber
ZSC06/901780-005	Carob
ZSC07/901780-007	Pewter
ZSC08/901780-008	Flue
ZSC09/901780-009	Abyss
ZSC12/901780-012	Zinc

Price Category F

Adjourn - Maharam	
72" wide	
57% polyester	
43% Trevira CS polyester	
ZA102/511350-002	Guava
ZA103/511350-003	Bran
ZA104/511350-004	Flax
ZA105/511350-005	Oatmeal
ZA109/511350-009	Terrain

Crush - Maharam	
54" wide	
88% nylon	
6% acrylic	
6% polyolefin	
VS01/464780-001	001
VS02/464780-002	002
VS05/464780-005	005
VS08/464780-008	008
VS13/464780-013	013
VS16/464780-016	016
VS17/464780-017	017
VS18/464780-018	018
VS19/464780-019	019
VS20/464780-020	020
VS22/464780-022	022
VS23/464780-023	023
VS26/464780-026	026
VS27/464780-027	027

Plait - Maharam	
58" wide	
68% recycled polyester	
32% polyester	
Z2901/466052-001	Cobblestone
Z2902/466052-002	Sachet
Z2903/466052-003	Mesa
Z2904/466052-004	Tavern
Z2905/466052-005	Sequoia
Z2906/466052-006	Rhubarb
Z2907/466052-007	Sangria
Z2908/466052-008	Reef
Z2909/466052-009	Stormy
Z2910/466052-010	Dapper

- Maharam textiles are on assigned lead times [\[A\]](#).
- Fabric numbers are listed as Herman Miller fabric number/Maharam fabric number.

Price Category F continued
on next page

Maharam® Colors — Workspaces

continued

Price Category F

continued

Sharkskin 2 - Maharam

54" wide

89% polyester

11% solution-dyed polyester

PFOA-Free stain resistant finish

Acrylic backing

ZS201/901650-033 Harmony

ZS202/901650-034 Suggestion

ZS203/901650-039 Lyric

ZS204/901650-040 Clarify

ZS205/901650-041 Remain

ZS206/901650-046 Sphere

ZS207/901650-051 Restore

ZS208/901650-054 Tawny

ZS209/901650-056 Frosted

ZS210/901650-057 Regal

ZS211/901650-058 Wash

ZS212/901650-059 Navy

ZS213/901650-060 Neon

ZS214/901650-061 Azalea

Price Category G

Ticker - Maharam

54" wide

47% polyester

31% post-industrial recycled polyester

22% post-consumer recycled polyester

Crypton green finish and backing

ZT401/466304-001 Calm

ZT402/466304-002 Millet

ZT403/466304-003 Sow

ZT404/466304-004 Beaver

ZT405/466304-005 Patch

ZT406/466304-006 Balloon

ZT407/466304-007 Squad

ZT408/466304-008 Bale

ZT409/466304-009 Fecund

ZT410/466304-010 Aquarium

ZT411/466304-011 Drink

ZT412/466304-012 Depth

ZT413/466304-013 Far

Price Category H-Z

No fabrics available at this time.

- Maharam textiles are on assigned lead times [A](#).
- Fabric numbers are listed as Herman Miller fabric number/Maharam fabric number.



Casters and Glides

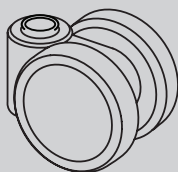


WARNING



Depending on the floor surface, chair may unexpectedly roll away from user when entering or exiting the chair, possibly leading to unexpected injury. Please refer to descriptions of floor types when selecting casters.

32 Caster

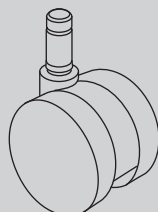


17/8-inch-diameter hard double-wheel caster; black nylon wheels and yoke; for use on carpet only

Applicable on:

Keyn Chairs
Sayl® Chairs

BB Caster

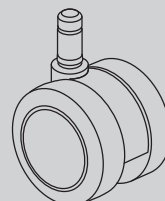


2 1/2-inch-diameter hard double-wheel caster; black nylon wheels and yoke; for use on carpet only

Applicable on:

New Aeron® Chairs
Classic Aeron Chairs
Caper® Chairs
Celle® Chairs
Embody® Chairs
Equa 2® Chairs
Ergon 3® Chairs
Mirra 2 Chairs
Sayl Chairs Verus™ Chairs

C7 Caster



2 1/2-inch-diameter double-wheel caster; black nylon wheels and yoke; soft polyurethane tread; for use on hard floors or carpet

Applicable on:

New Aeron Chairs
Classic Aeron Chairs
Caper Chairs
Celle Chairs
Embody Chairs
Equa 2 Chairs
Ergon 3 Chairs
Mirra 2 Chairs
Sayl Chairs
Verus Chairs

CA Caster

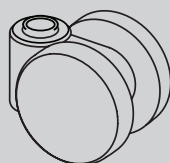


2-inch-diameter single-wheel caster; black rubber wheel with black yoke; for use on hard floors or carpet

Applicable on:

Co/Struc® System

49 Caster

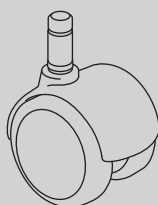


17/8-inch-diameter soft double-wheel caster; black nylon wheels and yoke; for use on hard floors or carpet

Applicable on:

Keyn Chairs
Sayl Chairs

BSC Caster

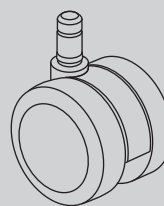


2-inch-diameter double-wheel caster; black nylon wheels and hood; soft polyurethane tread; for use on hard floors or carpet

Applicable on:

Eames® Aluminum Group
Eames Executive Chairs
Eames Soft Pad Group

C9 Caster

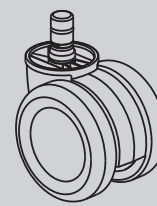


2 1/2-inch-diameter double-wheel caster; black nylon wheels and yoke; soft polyurethane tread; internal brake; for use on hard floors or carpet

Applicable on:

Classic Aeron Chairs
Caper Chairs
Celle Chairs
Embody Chairs
Equa 2 Chairs
Ergon 3 Chairs
Keyn Chairs
Mirra 2 Chairs
Sayl Chairs
Setu® Stools
Verus Chairs

DC1 Caster



2 1/2-inch-diameter double-wheel braking caster; black nylon wheels and yoke; for use on hard floors or carpet; quiet roll technology

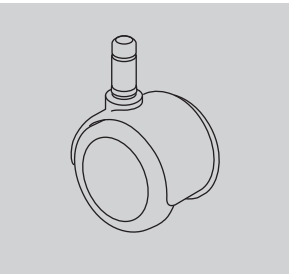
Applicable on:

New Aeron Chairs

Casters and Glides

continued

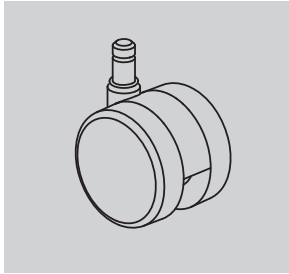
DS Caster



2-inch-diameter soft double-wheel braking caster; black nylon wheels and hood; for use on hard floors only

Applicable on:
Aside® Chairs
Caper Chairs

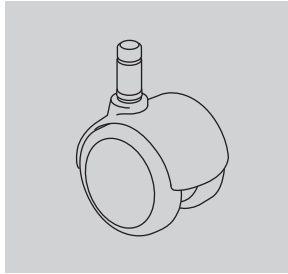
HCC Caster



2 1/2-inch-diameter double-wheel medium roll resistance caster; black yoke; for use on hard floors or carpet.

Applicable on:
Keyn Chairs
Setu Chairs

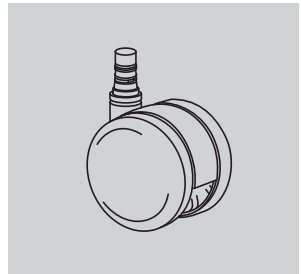
MD Caster



2-inch-diameter double-wheel caster; black nylon wheels with integral chrome hood; soft polyurethane tread; for use on hard floors or carpet

Applicable on:
Eames® Aluminum Group
Eames Executive Chairs
Eames Soft Pad Group

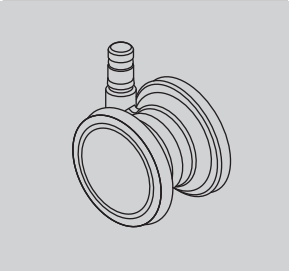
SC8 Caster



2 1/2-inch-diameter double-wheel caster; black nylon wheels and yoke; soft polyurethane tread; quiet roll technology; for use on hard floors or carpet

Applicable on:
Mirra 2 Chairs

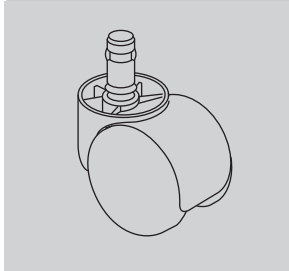
H9 Caster



2 1/2-inch-diameter double-wheel caster; clear polycarbonate wheels; nylon yoke; soft polyurethane tread; for use on carpet only.

Applicable on:
Embody Chairs
Keyn Chairs
Setu Chairs

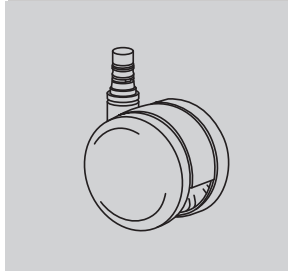
HW Caster



2-inch-diameter double-wheel caster; black nylon wheels and hood; for use on carpet only

Applicable on:
Limerick® Cart

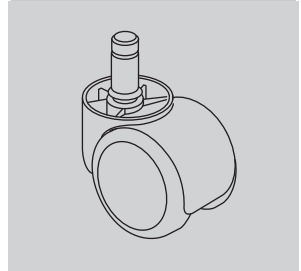
OC Caster



Setu-specific 2 1/2-inch-diameter double-wheel medium roll-resistant caster; black nylon wheels and yoke; soft polyurethane tread; for use on hard floors or carpet; quiet roll technology

Applicable on:
Keyn Chairs
Setu Chairs

SW Caster



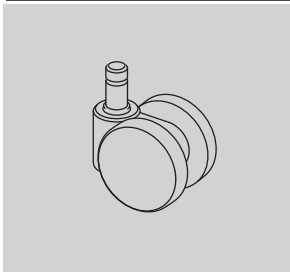
2-inch-diameter soft double-wheel caster; black nylon wheels and hood; for use on hard floors only

Applicable on:
Limerick Cart

Casters and Glides

continued

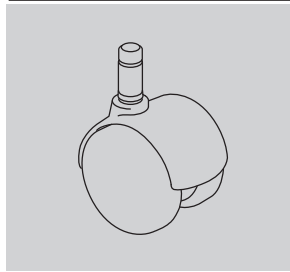
U4 Caster



17/8-inch-diameter hard double-wheel caster; black nylon wheels and yoke; for use on carpet only

Applicable on:
Aside Chairs
Caper Chairs
Verus Chairs

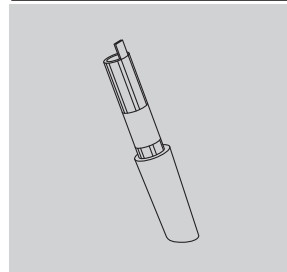
UD Caster



2-inch-diameter hard double-wheel caster; black nylon wheels with painted hood; for use on carpet only

Applicable on:
Eames® Aluminum Group
Eames Executive Chairs
Eames Soft Pad Group

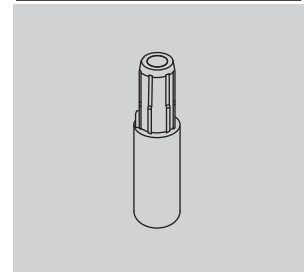
16 Glide



(Front glide shown)
2 1/8-inch-high glide; black or fog acetal; for use on carpet only

Applicable on:
Sayl Chairs

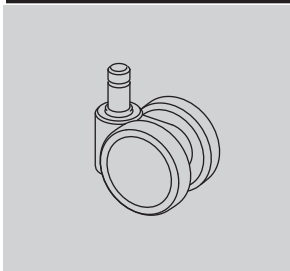
AGL Glide



2 1/4-inch-high glide; black or white nylon stem; for use on carpet only

Applicable on:
Keyn Chairs

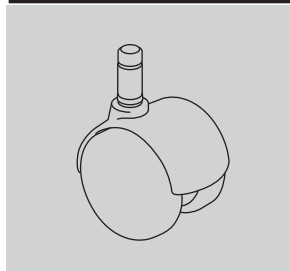
U5 Caster



17/8-inch-diameter soft double-wheel caster; black nylon wheels and yoke; for use on hard floors or carpet

Applicable on:
Aside Chairs
Caper Chairs
Verus Chairs

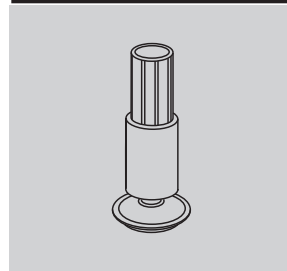
VD Caster



2-inch-diameter hard double-wheel caster; black nylon wheels with integral chrome hood; for use on carpet only

Applicable on:
Eames Aluminum Group
Eames Executive Chairs
Eames Soft Pad Group

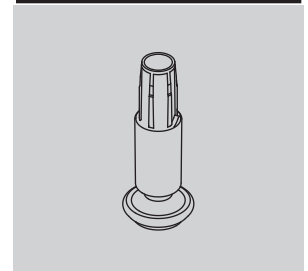
69 Glide



(Front glide shown)
2 1/8-inch-high glide; black glass-filled nylon stem; steel-plated swivel foot with Floor Saver Glide™ insert; for use on hard floors only

Applicable on:
Sayl Chairs

FSG Glide



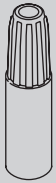
2 1/4-inch-high glide; black or white nylon stem; steel-plated swivel foot with Floor Saver Glide™ insert; for use on hard floors only

Applicable on:
Keyn Chairs

Casters and Glides

continued

G4 Glide

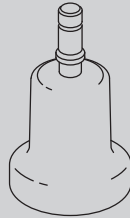


17/8-inch-high glide; black acetal; for use on carpet only

Applicable on:

Verus Chairs

GF Glide

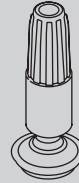


2 1/2-inch-high glide; black nylon; for use on hard floors or carpet

Applicable on:

New Aeron Chairs
Classic Aeron Chairs
Caper Chairs
Celle Chairs
Equa 2 Chairs
Ergon 3 Chairs
Mirra 2 Chairs
Sayl Chairs

GL Glide



17/8-inch-high glide; black nylon stem; steel-plated swivel foot with Floor Saver Glide™ insert; for use on hard floors only

Applicable on:

Verus chairs

SB Glide



1/4-inch-high, 1-inch diameter glide; thermoplastic CAP material (G1 base has black glides; XT base has clear glides); for use on hard floors or carpet

Applicable on:

Classic Aeron Chairs
Equa 2 Chairs

GD Glide

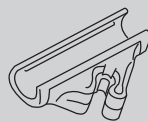


1 1/2-inch-diameter glide; 1/2 inch in height; black nylon; for use on hard floors or carpet

Applicable on:

Eames Aluminum Group
Eames Executive Chairs
Eames Soft Pad Group

GG Glide



1/2-inch-high ganging glide; clear polycarbonate; for use on hard floors or carpet

Applicable on:

Limerick Chairs

HG Glide



1/2-inch-high glide; black nylon glide with stainless-steel insert; for use on hard floors or carpet

Applicable on:

Aside Chairs

SG Glide (for Aside)



1/2-inch-high glide; black nylon; for use on carpet only

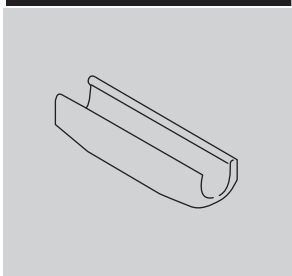
Applicable on:

Aside Chairs

Casters and Glides

continued

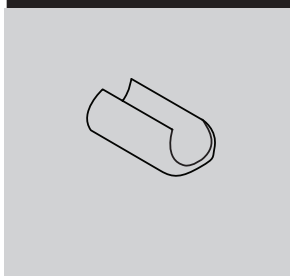
SG Glide (for Limerick)



1/2-inch-high glide; clear polycarbonate; for use on hard floors or carpet

Applicable on:
Limerick Chairs

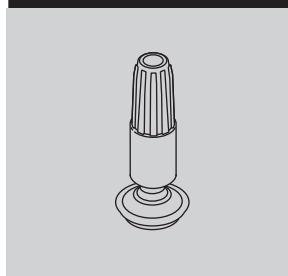
XS Glide



1/8-inch-high glide; polycarbonate in black, fog, clear, and studio white finishes; for use on hard floors or carpet

Applicable on:
Sayl Chairs

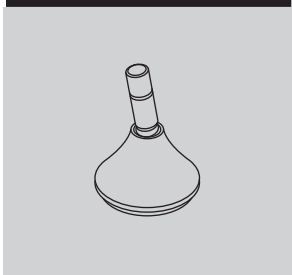
YX Glide



1 7/8-inch-high glide; black nylon stem; steel-plated swivel foot with Floor Saver Glide™ insert; for use on hard floors only

Applicable on:
Caper Chairs

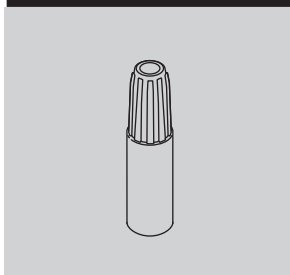
X8 Glide



Glide; low profile; for use on hard floors or carpet

Applicable on:
Setu Chairs

Y7 Glide



1 7/8-inch-high glide; black acetal; for use on carpet only

Applicable on:
Caper Chairs



Fire Retardancy – Seating

Fire Retardancy

Fire-retardant chairs are manufactured with special cushions, cushions covered with fire-barrier material, and/or are upholstered in approved fire-retardant fabrics. These chairs meet California TB 133 requirements.

All foam, Proprietary Textiles, and Textile Alliance Program™ (TAP™) textiles on HermanMiller seating products comply with California TB 117-2013.

State of California
Bureau of Home
Furnishings,
Technical Bulletin 133

State of California
Bureau of Home
Furnishings, Technical
Bulletin 117-2013

AireWeave™ 2	FR	•
Balance ¹	FR	•
Bento	FR	•
Bingo		•
ColorGuard	FR	•
Crepe	FR	•
Crossing	FR	•
Cygnus™	FR	•
Flexnet™	FR	•
Gem	FR	•
Hopsak	FR	•
Latitude™	FR	•
Leather	FR	•
Lyris 2™ 3	FR	•
Mercer		•
Moiré	FR	•
Noble		•
Pellicle® Classic ⁴	FR	•
Pellicle Tuxedo		•
Pellicle Waves		•
Plateau	FR	•
Quilty	FR	•
Rhythm ²	FR	•
Spools	FR	•
Stitches	FR	•
Strata		•
Twist	FR	•

- Fabric meets code requirements.

FR To meet California TB 133 code requirements, fabrics must be applied to approved chairs identified with FR product numbers. To verify a fabric is approved for a specific chair, see the Fire-Retardant listing on the Seating Textiles Application Chart.

- 1 Balance 3512 carbon and 3513 black only available on Embody® FR chairs.
- 2 Rhythm 3014 black only available on Embody FR chairs.
- 3 Lyris 2 4W11 graphite only available on Setu® FR chairs.
- 4 Pellicle Classic 3Do1 graphite only available on Classic Aeron® FR chairs.



Customer's Own Material/Customer's Own Leather Order Information — Seating

Packaging

Packaging varies according to individual product. A surcharge may be added for special packaging requests. Contact Customer Care for specific information.

Customer's Own Material/Customer's Own Leather

Program Overview

The Customer's Own Material (COM) and Customer's Own Leather (COL) program gives you the option of using textiles other than those listed. Herman Miller will test textiles for application to Herman Miller products and will process orders for those with approved COM/COL textiles only. COM/COL are assigned lead-time textiles.

Omni lists an overview of fabrics and leathers that have been tested and indicates whether or not they were approved for application to Herman Miller products.

Specific information on the terms and conditions, testing, approval, and ordering process for COM/COL is listed below. Questions about the COM/COL program and requests for assistance may be directed to your COM representative at:

(616) 654 3400

(866) 854 3048 EXT 6543400

Customer's Own Material/Customer's Own Leather Warranty

Herman Miller does not warrant COM/COL textiles. COM/COL textiles are tested for application only; they are not tested for performance. The Herman Miller warranty does apply to the underlying products.

Suppliers of COM/COL textiles are responsible for color consistency within commercial tolerances, UV stability, and resistance to soiling and perspiration.

Customer's Own Material/Customer's Own Leather Pricing

COM is a Category 1 fabric. There are no application charges for COM fabrics. COL is a Category 7 textile; refer to prices on specific products to determine the application charge.

Ordering and payment for COM/COL textile yardage are the responsibility of the customer and the textile supplier.

If desired, Herman Miller will purchase COM textiles directly from True Textiles, C.F. Stinson, Luna Textiles, Maharam, and Momentum Textiles to simplify ordering and shipment. For this service, refer to the Supplier Connection program.

Textile Approval

1. Select a COM/COL textile and a Herman Miller product.
2. If your textile is not listed in Omni, obtain a test number from a COM representative at (616) 654 3400. You can also submit your request within Omni. Please have the following information ready before calling: textile name, number, pattern, roll width, and the product you will apply it to.

Additional yardage may be needed due to the unique characteristics of a textile. All package labels must include the words "COM test" or "COL test" and the assigned COM/COL test number.

3. Herman Miller will notify you of approval or disapproval within 4 days from receipt of the test yardage.

Ordering Products with COM/COL

1. Refer to the specific products to determine the yardage required for COM/COL textiles.
2. If your textile is not listed in Omni, call a COM representative at (616) 654 3400 or (866) 854 3048 EXT 6543400. The representative will assign an identification number for your textile (ID#) and will verify yardage requirements for your order. Additional yardage may be needed due to the unique characteristics of a textile.
3. Enter your order on Order Manager in Omni.
4. Upon receipt of your purchase order, Herman Miller will send you a PO acknowledgment.
5. Arrangements must be made for the textiles to be shipped from the supplier to Herman Miller for application to the seating products. Textiles must be tagged with the assigned identification number and the roll yardage quantity. See Omni for shipping procedures and current shipping addresses or contact a COM representative at (616) 654 3400 or (866) 854 3048 EXT 6543400.

Products will be scheduled for production when COM/COL textiles are received at Herman Miller. Standard lead times in effect at that time will apply.

Note: If textiles are to be purchased directly by Herman Miller through the Supplier Connection program, Herman Miller will handle the ordering and shipping process and will schedule your order for production upon receipt of your purchase order (dependent on textile availability). Refer to the Supplier Connection program for more information.

Customer's Own Material/Customer's Own Leather Order Information — Seating

continued

Supplier Connection

Program Overview

The Supplier Connection program is a service offered by Herman Miller to purchase approved COM textiles directly from True Textiles, C.F. Stinson, Luna Textiles, Maharam, and Momentum Textiles. When you select a textile through this program, Herman Miller will facilitate the ordering, scheduling, and shipment of the textile directly with the supplier.

Suppliers included in the Supplier Connection program keep an active inventory of textiles that are pre-approved for application to Herman Miller products. Pre-approval applies only to the suitability of a textile for manufacturing and application to a Herman Miller product. Omni provides an overview of fabrics that have been tested and indicates whether or not they were approved for application to Herman Miller products.

Specific information on the terms and conditions, testing, approval, and ordering process for the Supplier Connection program is listed below. Questions and requests for assistance may be directed to your COM representative at:
(616) 654 3400
(866) 854 3048 EXT 6543400

Supplier Connection Warranty

Textiles purchased by Herman Miller through the Supplier Connection program are COM and are not warranted by Herman Miller. COM textiles are tested for application only; they are not tested for performance. The Herman Miller warranty does apply to the underlying products.

Suppliers of COM textiles are responsible for color consistency within commercial tolerances, UV stability, and resistance to soiling and perspiration.

Supplier Connection Pricing

Textiles purchased by Herman Miller through the Supplier Connection program are COM. COM is a Category 1 fabric. There are no application charges for COM fabrics.

Payment for textiles purchased by Herman Miller through the Supplier Connection program is the responsibility of the customer or dealer. Herman Miller will invoice the order at the supplier's prices published at the time of the order.

Textile Approval

1. Refer to Omni to identify the approval status of the textile. If your textile is not listed, contact the COM Department to request testing for application to Herman Miller products.
2. Herman Miller will notify you of approval or disapproval in approximately 4 days from receipt of the test yardage. If the textile is approved, it will be assigned a COM identification number.

Ordering Products with Supplier Connection COM

1. Identify and include the following information on your purchase order:
 - Product number and option
 - Herman Miller's COM identification number
2. Enter your order on Order Manager in Omni.
3. Upon receipt of the purchase order, Herman Miller will process your order and send you a PO acknowledgment. Herman Miller will determine the yardage required to produce your product and will order and schedule for delivery the required textile. Standard lead times in effect at the time the textile is allocated at the supplier will apply to products ordered through this program.

Proprietary Textiles Application Chart — Seating

• Available

[A] Assigned lead-time textile.

See following page for exception
notes.

[N] Non-woven textile.

Price Category 1																																	
COM	Customer's Own Material	A				14		1	1									1	1	1	1			1	1	1		1	1	1	1	1	1
231	8Z Pellicle®		•																														
1A7	AireWeave™ 2			•																													
3P	ColorGuard [N]					15		21	22	•	•	•	•	•	•	•	2		3	8			•	•	•				•	•	6	•	•
8T	Crossing					•				•	•						•	•	•	•				•					•	•		•	•
6V	Flexnet™																							•									
95	Gem					14				•	•						•	•	•	•			•		•			•	•			•	•
65	Interweave												•			•																	
4W	Lyris 2™									•	•																						
1MN	Monologue					14		21	22	•	•		•	•	•	•							•	•	•		•	•	•	•		•	•
3DK	Stretch Knit	A						21																									
235	Tailored	A				•		•	•	•		•	•	•	•							•		•	•			•	•				•
1WS	Whisper					14		21	•	•	•		•	•	•	•	•	•	•	•	•		•	•	•		•	•	•	•		•	•
Price Category 2																																	
92	Crepe					•		•	•	•	•	•	•	•	•	•	•	•	•	•	•		•	•	•		•	•	•	•		•	•
22Q	Fish Net					•		•	•	•		•	•	•	•	•	•	•	•	•	•		•	•		•	•		•	•		•	•
1LM	Loom					14		•	•			•	•	•	•								•	•			•			•	•		•
1MV	Marvel							21	•				•	•	•								•									•	
1HA	Medley					14	•	•	22			•	•	•	•	•	•	•	•	•	•		•	•	•		•	•	•		•	•	
3A	Moiré					14		•	•	•	•		•		•	•	•	•	•	•	•		•	•		•						•	•
30	Rhythm					•	23	•	•			•	•	•	•			•	•			•	•		•		•	•	•		•	•	
1RV	Rivet					14		21	22			•	•	•	•			•		•	•	•	•	•	•	•	•	•	•		•	•	
8R	Twist					•		•	•	•	•	•	•	•	•	•		•				•	•	•		•	•	•	•		•	•	
22T	Well Suited																	•	8								•		23			•	
Price Category 3																																	
70	Bento								•	•	•	•		•		•	2	•	•	8			•									•	
8M	Latitude™			23				•	•										3								•	•					
22R	Pins and Needles					14		•	•	•			•		•		•		•		•	•		•		•		•			•	•	
8U	Stitches					•		•	•	•	•		•		•	•	•	•	•	•	•		•	•	•	•	•	•	•		•	•	
22V	String Plaid					14		•	•				•	•	•				•		•	•	•	•		•					•	•	
Price Category 4																																	
7Y	Bingo [N]									•	•	•	•	•	•	•	2		3	8			•	•	•							•	
1DL	Dialogue																								•								
213	Mercer					14	•	•	22			•	•	•								•	•		•		•	•			•		
1A9	Network																							•									
6J	Plateau																•	•	•	•												•	
6S	Quilty					14		•	•			•	•	•	•				•		•	•	•			•					•	•	
8Y	Spools					14		21	•	•	•		•	•	•	•	•	•				•	•				•				•		
22P	Strata							21	22	•			•	•	•	•			•		•	•	•		•	•	•	•		•	•		•
Price Category 5																																	
14A	Hopsak					14		•	22	•	•	•	•	•	•	•	•	•	•			•	•	•		•	•	•	•		•	•	
22N	Noble (22H) A					14		•	25	•			•	•	•	•	•	•	3	8			•	•	•		•	•		•		•	
Price Category 6																																	
35	Balance							•																									
Price Category 7																																	
COL	Customer's Own Leather	A	1			14												1	1	1	8											1	
Price Category 8																																	
No fabrics available at this time																																	
Price Category 9																																	
21	Leather		23			14												•	•	8		4						•		•			

continued on next page

Proprietary Textiles Application Chart — Seating

continued

• Available

[A] Assigned lead-time textile.

See below for exception notes.

[N] Non-woven textile.

Fire-Retardant Chairs/Fabrics

	Mirra® 2 Chairs/Stools with Butterfly Back	Celle® Chairs/Stools	Embody® Chairs	Sayl® Work Chairs/Stools	Sayl Side Chairs	Setu® Chairs/Stools	Setu Lounge Chair/Ottoman	Ergon 3® Chairs	Equa 2® Fully Upholstered Chairs/Stools	Equa 2 Split-Pad Upholstered Chairs/Stools	Aside® Chairs	Caper® Chairs/Stools	Celeste™ Seating	Plex™ Lounge Furniture	Swoop™ Lounge Seating - Fully Upholstered	Fames® Tandem Sling Seating
Price Category 1																
COM Customer's Own Material [A]							1	1	1	1		1				
1A7__ AireWeave™ 2	•															
3P__ ColorGuard [N]		15	24	22				2		3	8				•	6
8T__ Crossing		14				•	•	•	•	•	•		•		•	
6V__ Flexnet™												•				
95__ Gem		14				•	•	•	•	•	•		•	•	•	
4W__ Lyris 2™						18	•									
235__ Tailored [A]	•					•							•	•		
Price Category 2																
92__ Crepe		14		•	•				•	•	•		•	•	•	
22Q__ Fish Net		•		•	•	•								•		
3A__ Moiré		14		•	•	•	•	•	•	•			•			
30__ Rhythm		14	16	24	•						8				•	
8R__ Twist		14		•	•	•	•	•			8		•	•	•	
Price Category 3																
70__ Bento				•	•	•	•	2	•		8				•	
8M__ Latitude™		•		•	•											
22R__ Pins and Needles				•	•	•										
8U__ Stitches		14		•	•	•	•	•	•	•			•	•	•	
22V__ String Plaid				•									•			
Price Category 4																
6J__ Plateau											•					
6S__ Quilty		14		•	•										•	
Price Category 5																
14A__ Hopsak		14		•			•		•	•	•			•	•	
Price Category 6																
35__ Balance			17													
Price Category 9																
21__ Leather		14									8					

All foam and Proprietary Textiles on HermanMiller seating comply with California TB 117-2013.

Application Note: Herman Miller cannot guarantee material/pattern alignment in adjacent products. For example, a fabric's pattern may not align from one pedestal cushion top to the next, or from one chair to another.

- 1 Refer to price book appendices and Omni for COM/COL information.
- 2 Available on all Ergon 3 chairs except for fabric back (FB) option.
- 3 Available on A-and B-size Equa 2 split-pad upholstered chairs.
- 4 See specific products for information on specifying leather in combination with fabric.
- 6 Only available in 3P02 Navy, 3P03 Spruce, 3P14 Black, 3P17 Burgundy, 3P19 Slate, and 3PC7 Bucksuede.
- 8 Only available on nonupholstered outer back option (PB).
- 14 Available on Celle UC (upholstered seat) and HC (upholstered seat with protective edge) Chairs.
- 15 Available only on Celle HC (upholstered seat with protective edge) Chairs.
- 16 Only available in 3014 Black.
- 17 Only available in 3512 Carbon and 3513 Black.
- 18 Only available in 4W26 Slate Grey, 4W30 Java, and 4W31 Graphite.
- 21 Not available on Sayl upholstered back work chairs.
- 22 Not available on Sayl side chairs with upholstered backs.
- 23 Available in select colors. Refer to "Proprietary Textile Colors-Seating" for color offering.
- 24 Not available on Sayl upholstered High-Back Work Chairs.
- 25 Not available on Sayl side chairs with upholstered backs. Available in select colors. Refer to "Proprietary Textile Colors-Seating" for color offering.

Proprietary Textile Colors — Seating

Price Category 1

Customer's Own Material	
See Order Information in Appendices.	
Assigned lead-time textile. A	

8Z Pellicle®	
For New Aeron® Chairs	
56% elastomeric	
44% polyester	
23101	Mineral
23102	Carbon
23103	Graphite

AireWeave™ 2	
For Mirra® 2 Chairs	
67% elastomeric	
33% antimony-free polyester	
1A701	Alpine
1A702	Slate Grey
1A703	Graphite
1A704	Lime Green
1A705	Cappuccino
1A706	Urban Orange
1A707	Dark Turquoise
1A708	Twilight

ColorGuard	
54" wide	
100% vinyl	
3P01	Grey
3P02	Navy *
3P03	Spruce * A
3P08	Blueberry A
3P12	Black Plum A
3P14	Black *
3P19	Slate *
3P31	Horizon Blue A
3P33	Pumice
3P54	Candy Apple A
3P72	Allspice A
3P96	Manzanita A
3P97	Fudge A
3PB2	Sea Grass A
3PB5	Vizcaya Palm A
3PB9	Neptune A
3PC7	Bucksuede * A
3PD4	Otter A

* Colors available on Eames® Tandem Sling Seating.

A Assigned lead-time color.

Crossing	
54" wide	
86% antimony-free polyester	
14% polyester	
8T03	Wicker
8T04	Porcelain
8T05	Warm Grey
8T06	Sepia
8T07	Pumpkin
8T08	Copper
8T09	Cranberry
8T10	Tomato
8T11	Mulberry
8T12	Plum
8T13	Green Apple
8T14	Loden
8T15	Spruce
8T16	Periwinkle
8T17	Cerulean
8T18	Indigo
8T19	Shale
8T20	Brownstone
8T21	Bark
8T22	Tin
8T23	Graphite
8T24	Black

Flexnet™	
For Caper® Chairs	
69% elastomeric	
31% polyester	
6V01	Black
6V02	Silver Grey

Gem	
54" wide	
100% antimony-free polyester	
9501	Sesame
9502	Tangerine
9503	Red
9504	Red Violet
9505	Mulberry
9506	Java
9507	Twilight
9508	Bayou
9509	Iris
9510	Berry Blue
9511	Aqua Green
9512	Green Apple
9513	Spruce
9514	Black
9515	Slate Grey
9516	Fog

Interweave	
For Verus™ Chairs	
71% elastomeric	
29% polyester	
6504	Pewter
6505	Charcoal
6506	Black

Lyris 2™	
For Setu® Chairs	
74% elastomeric	
26% polyester	
4W21	Alpine
4W22	Mango
4W23	Chartreuse
4W25	Berry Blue
4W26	Slate Grey
4W28	Chino
4W29	Rattan
4W30	Java
4W31	Graphite

Price category 1 continued on next page

Proprietary Textile Colors — Seating

continued

Price Category 1

continued

Monologue

54" wide	
56% recycled polyester	
44% polyester	
1MN01	Linen
1MN02	Alabaster
1MN03	Truffle
1MN04	Folkstone
1MN05	Silver Pine
1MN06	Slate
1MN07	Seed
1MN08	Yellow Oxide
1MN09	Persimmon
1MN10	Tundra
1MN11	Meadow
1MN12	Blue Sky
1MN13	Blue Spruce
1MN14	Deep Sea

Stretch Knit

Assigned lead-time textile. A	
Available only on Sayl®	
Suspension Back Work Chairs	
97% polyester, 3% spandex	
3DK01	Fog
3DK02	Slate Grey
3DK03	Java
3DK04	Black
3DK05	Red
3DK06	Green Apple
3DK07	Berry Blue

Tailored

Assigned lead-time textile. A	
54" wide	
56% polyester	
44% recycled polyester	
23501	Studio White
23502	Sugar
23503	Tomato
23504	Orchid
23505	Boysenberry
23506	Chive
23507	Bluegrass
23508	Cobalt
23509	Cadet
23510	Fog
23511	Graphite
23512	Black
23513	Coffee

Whisper

54" wide	
73% recycled polyester	
27% polyester	
1WS01	Sand Dollar
1WS02	Pebble
1WS03	Silver Birch
1WS04	Iceberg
1WS05	Silver Pine
1WS06	Carbon
1WS07	Cumin
1WS08	Adobe
1WS09	Strawberry
1WS10	Blush
1WS11	Eggplant
1WS12	Willow
1WS13	Sea Grass
1WS14	Pool
1WS15	Blueberry

Price Category 2

Crepe

54" wide	
100% recycled polyester	
9201	Licorice
9203	Smoke
9207	Cherry
9209	Claret
9212	Raisin
9218	Aquamarine
9223	Cadet
9241	Beachglass
9243	Midnight
9244	Artichoke
9248	Warm White
9249	Stone
9250	Earth
9251	Fog
9252	Slate Grey
9253	Yellow Dark
9254	Coral
9255	Blush Grey
9256	Wild Berry
9257	Clover
9258	Caribbean
9259	Cerulean
9260	Brownstone
9261	Shale
9262	Graphite
9263	Tomato
9264	Green Apple

Fish Net

55" wide	
100% recycled polyester	
22Q01	Oyster
22Q02	Stone
22Q03	Citrus
22Q04	Curry
22Q05	Chipotle
22Q06	Cherry
22Q07	Fuschia
22Q08	Claret
22Q09	Purple
22Q10	Clover
22Q11	Pesto
22Q12	Peacock
22Q13	Lagoon
22Q14	Twilight
22Q15	Bluestone
22Q16	Storm
22Q17	Black
22Q18	Cocoa

Loom

54" wide	
100% polyester	
1LM01	Linen
1LM02	Brown Sugar and Spice
1LM03	Brick and Mortar
1LM04	Salt and Pepper
1LM05	Black
1LM06	Lemongrass
1LM07	Poppy
1LM08	Wild Berry
1LM09	Loden
1LM10	Jade
1LM11	Deep Sea

Price category 2 continued on next page

Proprietary Textile Colors — Seating

continued

Price Category 2

continued

Marvel	
54" wide	
100% pvc-free polyurethane	
1MV01	Summer White
1MV02	Sand Dollar
1MV03	Espresso
1MV04	Folkstone Grey
1MV05	Graphite
1MV06	Onyx
1MV07	Polar Blue
1MV08	Blush Grey
1MV09	Woodrose
1MV10	Citrus
1MV11	Adobe
1MV12	Red
1MV13	Kiwi Green
1MV14	Pine
1MV15	Teal Green
1MV16	Twilight

Medley	
54" wide	
100% polyester	
1HA01	Stone
1HA02	Trail
1HA03	Charcoal
1HA04	Cinder
1HA05	Citrus
1HA06	Papaya
1HA07	Chutney
1HA08	Tundra
1HA09	Feather Grey
1HA10	Chartreuse
1HA11	Loden
1HA12	Peacock
1HA13	Bayou
1HA14	Blue Grotto
1HA15	Blueberry
1HA22	Khaki
1HA23	Pewter
1HA24	Yellow Oxide
1HA25	Vintage Rose
1HA26	Raspberry
1HA27	Acai Berry

Moiré	
54" wide	
100% recycled polyester	
3A01	Concrete
3A02	Biscotti
3A03	Rattan
3A04	Chambray
3A05	Fern
3A08	Violet
3A09	Zin
3A10	Curry
3A11	Spice
3A12	Cork

Rhythm	
54" wide	
100% polyester	
3001	Kiwi Green *
3002	Green Apple
3003	Peacock
3004	Bayou *
3005	Berry Blue
3006	Iris
3007	Twilight
3008	Pumpkin *
3009	Poppy *
3010	Molasses
3011	Mulberry
3012	Khaki *
3013	Mink
3014	Black
3015	Charcoal

* Colors not available on Embody® Chair.

Rivet	
54" wide	
100% recycled polyester	
1RV01	Twig
1RV02	Deep Clay
1RV03	Woodrose
1RV04	Otter
1RV05	Hemlock
1RV06	Olive
1RV07	Lagoon
1RV08	Deep Sea
1RV09	Charcoal
1RV10	Grey Brindle

Twist	
54" wide	
80% antimony-free polyester	
13% recycled polyester	
7% polyester	
8R05	Wicker
8R10	Poppy
8R14	Tin
8R15	Shale
8R16	Graphite
8R17	Birch
8R18	Sepia
8R22	Blueberry
8R23	Green Apple
8R26	Gunmetal
8R27	Cinder
8R28	Citrus
8R29	Pekoe
8R30	Tangerine
8R31	Red Plum
8R32	Wisteria
8R33	Forest
8R34	Jade Dark
8R35	Waterfall
8R36	Midnight Blue
8R37	Carbon Dark

Price category 2 continued on next page

Proprietary Textile Colors — Seating

continued

Price Category 2

continued

Well Suited	
55" wide	
79% polyester	
21% recycled polyester	
22T01	Oyster *
22T02	Raffia *
22T03	Peppermint *
22T04	Wild Berry *
22T05	Spring Green *
22T06	Mint *
22T07	Periwinkle *
22T08	Cool Grey *
22T09	Citrus *
22T10	Pumpkin
22T11	Red
22T12	Fuschia
22T13	Orchid
22T14	Chartreuse *
22T15	Green Apple
22T16	Jade
22T17	Peacock
22T18	Blueberry
22T19	Bluestone *
22T20	Mink

* Colors not available on Swoop™ Plywood Lounge Seating.

Price Category 3

Bento	
54" wide	
100% antimony-free polyester	
7001	Frost
7002	Linen
7003	Khaki
7004	Truffle
7005	Grey Black
7006	Pumpkin
7007	Cranberry
7008	Everglade
7009	Cobalt
Latitude™	
61" wide	
100% polyester	
8M01	Graphite
8M02	Shadow
8M10	Alpine
8M17	Black
8M21	Slate Grey
8M22	Lime Green
8M23	French Press
8M24	Urban Orange
8M25	Dark Turquoise
8M26	Twilight
Latitude	
Colors for Mirra 2 Chairs	
100% polyester	
8M10	Alpine
8M17	Black
8M21	Slate Grey
8M22	Lime Green
8M23	French Press
8M24	Urban Orange
8M25	Dark Turquoise
8M26	Twilight

Pins and Needles	
58" wide	
76% recycled polyester	
24% polyester	
22R01	Day and Night
22R02	Night and Day
Stitches	
54" wide	
54% polyester	
46% recycled polyester	
8U02	Rye
8U03	Khaki
8U04	Honey
8U05	Cattail
8U08	Cool Grey
8U09	Slate Blue
8U11	Evening Blue
8U12	Charcoal
8U13	Kiwi Green
8U16	Cocoa
8U17	Seed
String Plaid	
54" wide	
100% recycled polyester	
22V01	Warm White on Khaki
22V02	Mint on Yellow Green
22V03	Mist on Blue Grey
22V04	Sky Blue on Red
22V05	Lime on Magenta
22V06	Bright Green on Green
22V07	Aqua Blue on Cerulean
22V08	Ivory on Black

Price Category 4

Bingo	
54" wide	
100% PVC-free polyurethane	
Resilience® finish	
7Y01	Oyster
7Y02	Natural
7Y03	Cashew
7Y05	Rattan
7Y06	Root
7Y07	Woodland
7Y10	Allspice
7Y11	Canyon
7Y17	Seed
7Y18	Mushroom
7Y19	Blue Grey
7Y21	Black
7Y22	Mint
7Y23	Seaport
7Y24	Evening Blue
7Y26	Kiwi Green
7Y27	Celadon
7Y29	Pesto

Price category 4 continued on next page

Proprietary Textile Colors — Seating

continued

Price Category 4

continued

Dialogue	
For Public Office Landscape®	
Sectional Back/Social Chair Back	
knit to size	
100% polyester	
1DL01	Light Brindle
1DL02	Dark Brindle

Mercer	
54" wide	
50% solution dyed recycled nylon	
50% solution dyed nylon	
BLOCKaide	
21301	Stone
21303	Cayenne
21305	Pesto
21306	Teal Blue
21307	Ultramarine
21310	Charcoal

Network	
For Public Office Landscape®	
Sectional Back/Social Chair Back	
knit to size	
100% polyester	
1A901	Warm White
1A902	Fog
1A903	Red
1A904	Wildberry
1A905	Green Apple
1A906	Twilight
1A907	Graphite

Plateau	
Perspectives® Collection	
knit to size	
100% polyester	
6J01	Feather Grey
6J02	Trail
6J06	Twig
6J08	Sagebrush
6J09	Winter Berry
6J10	Thunder
6J11	Blueberry
6J12	Rosemary
6J14	Black

Quilty	
56" wide	
100% antimony-free polyester	
GreenShield	
6S03	Khaki
6S04	Straw
6S07	Brick
6S10	Mink
6S11	Green Apple
6S13	Indigo
6S14	Zinc
6S15	Slate
6S16	Beachwood
6S17	Paprika
6S18	Plum
6S19	Juniper
6S20	Grey Black

Spools	
54" wide	
51% recycled polyester	
49% polyester	
Crypton® Green	
8Y03	Trail
8Y05	Copper
8Y08	Bluegrass
8Y09	Lagoon
8Y11	Beachglass
8Y12	Marsh
8Y13	Bud

Strata	
54" wide	
50% Solution dyed recycled nylon	
50% Solution dyed nylon	
BLOCKaide	
22P04	Pesto
22P05	Peacock
22P06	Blue Jay
22P07	Blueberry
22P09	Mango
22P10	Paprika
22P12	Wheat
22P13	Brownstone
22P14	Bayou

Price Category 5

Hopsak	
56" wide	
100% recycled polyester	
14A20	Black
14A22	Raw Umber Dark
14A26	Grey Blue Dark
14A30	Sepia Dark
14A38	Emerald Dark
14A39	Yellow Dark
14A40	Orange
14A41	Sienna
14A42	Olive Green Dark
14A43	Crimson
14A44	Crimson Dark Dark
14A45	Violet Dark
14A46	Pink Dark Dark
14A47	Ultramarine Dark
14A48	Cobalt Blue
14A49	Terra Cotta
14A50	Ochre Dark

Noble	
Assigned lead-time textile. ^A	
54" wide	
100% wool	
22N02	Chipotle *
22N04	Cherry *
22N07	Cadet *
22N08	Berry Blue *
22N09	Peacock *
22N11	Pesto *
22N12	Blue Grey Mix *
22H15	Heathered Black **
22H16	Heathered Grey **
22H17	Heathered Twilight **
22H18	Heathered Rye Grass **
22N19	Lemongrass Mix *
22H20	Heathered Red **
22H21	Heathered Wild Berry **
22N22	Pesto Mix *
22N23	Lagoon Mix *

* Colors not available on Sayl® Side Chairs.

** Colors not available on Sayl Side Chairs Back.

Proprietary Textile Colors — Seating

continued

Price Category 6

Balance	
For Embody® chairs	
100% polyester	
3506	Green Apple
3507	Blue Moon
3509	Berry Blue
3510	Iris
3512	Carbon
3513	Black

Price Category 7

Customer's Own Leather
See Order Information in Appendices. Assigned lead-time textile. A

Price Category 8

No fabrics available at this time.

Price Category 9

Leather	
approx. 50 sq. ft. per hide	
100% leather	
2101	Ivory
2109	Black *
2110	Smoke
2111	Graphite
2112	Khaki
2113	Rattan
2114	Truffle
2115	Alpine
2116	Haze
2117	Sable Grey
2118	Dark Mineral **
2119	Dark Carbon ***
2120	Cranberry
2121	Deep Sea

* Armpad color available on Aeron® Chair, Graphite.

** Armpad color available on Aeron Chair, Mineral.

*** Armpad color available on Aeron Chair, Carbon.

Maharam® Application Chart — Seating

- Available

See below for exception notes.

Maharam textiles are on assigned lead times. A

[N] Non-woven textile.

	Mirra® Chairs/Stools	Celle® Chairs	Sayl® Work Chairs/Stools	Sayl Side Chairs	Setu® Chairs/Stools	Setu Lounge Chair/Ottoman	Verus™ Work Chairs/Stools Back	Verus Work Chairs/Stools Seat	Verus Side Chairs Back	Verus Side Chairs Seat	Ergon 3® Chairs	Equa 2® Fully Upholstered Chairs/Stools	Equa 2 Split-Pad Upholstered Chairs/Stools	Aside® Chairs	Caper® Chairs/Stools	Celeste™ Seating	Keyn Chair Group	Locale® Bench Cushions	Public Office Landscape® Seat	Plex™ Lounge Furniture	Swoop™ Lounge Seating - Fully Upholstered	Swoop Lounge Seating - Plywood	Cushion Tops	Workspaces
Price Category 1-2																								
No fabrics available at this time.																								
Price Category 3																								
ZM2__ Meld - Maharam	14	•	•	•	•		•		•	•	•	•	•	8		•	•	•	•	•		•	•	
Price Category 4-9																								
No fabrics available at this time.																								
Price Category A																								
No fabrics available at this time.																								
Price Category B																								
VM__ Medium - Maharam	14	•	•				•		•	•	•	3	•		•	•				•	•		•	•
TI__ Messenger - Maharam *	14	•	•	•	•		•	•	•			•	•		•	•				•	•	•	•	•
Price Category C																								
ZLR__ Lariat - Maharam [N]	14	16	16				•		•							•		•					•	
Z27__ Manner - Maharam	14	•	•				•		•	•	•	•	•		•	•				•	•	•	•	•
Z3__ Metric - Maharam	14	•	•				•	•	•	•	•	•	•		•	•				•	•	•	•	•
Price Category D																								
ZMD__ Mode - Maharam	14	•	•				•		•			•	•		•	•		•	•	•	•	•	•	•
Price Category E																								
ZFS__ Focus - Maharam	14	16	16										•		•								•	
V9G__ Ledger - Maharam [N]	14	16	16				•		•							•							•	
ZBQ__ Oblique - Maharam			16				•		•	•			•		•						•	•	•	
ZP2__ Pick - Maharam			•	•			•		•	•			•		•						•	•	•	
Z32__ Skein - Maharam	14	16	16	•									•		•								•	•
ZT3__ Technic - Maharam	14	18	16										•		•									
Price Category F																								
ZCH__ Chock - Maharam													•											
ZC8__ Coin - Maharam	14	18	16										•		•								•	
ZCJ__ Coincide - Maharam			16	16									•		•								•	
VS__ Crush - Maharam					•	•									•						•			•
ZD1__ Disc - Maharam	14	18	16										•		•								•	
ZD3__ Divide - Maharam	14	18	16										•		•								•	
ZEE__ Exchange - Maharam	14	16	16				•		•				•		•					•			•	
Z29__ Plait - Maharam	14	16	16	•			•		•						•	•					•		•	•
V26__ Remix - Maharam			16	16											•	•				•		•	•	
ZRV__ Rove - Maharam	14	16	16				•		•						•									
ZRA__ Runner Standard - Maharam	14	16	16													•								
ZSM__ Seam - Maharam	14	18	16										•		•									
Z31__ Sequence - Maharam	14	16	•										•	•	•	•					•		•	
ZSS__ Shuttle Standard - Maharam	14	16	16													•								
Z33__ Strum - Maharam [N]			16													•	•				•			
ZWX__ Waxen - Maharam	14	16	16													•								

* Available in select colors on 20-day lead-time.

Refer to "Maharam Colors - Seating" for 20-day colors.

continued on next page

Maharam® Application Chart — Seating *continued*

- Available

See below for exception notes.

Maharam textiles are on assigned lead times. A

[N] Non-woven textile.

	Mirra® Chairs/Stools	Celle® Chairs	Sayl® Work Chairs/Stools	Sayl Side Chairs	Setu® Chairs/Stools	Setu Lounge Chair/Ottoman	Verus™ Work Chairs/Stools Back	Verus Work Chairs/Stools Seat	Verus Side Chairs Back	Verus Side Chairs Seat	Ergon 3® Chairs	Equa 2® Fully Upholstered Chairs/Stools	Equa 2 Split-Pad Upholstered Chairs/Stools	Aside® Chairs	Caper® Chairs/Stools	Celeste™ Seating	Keyn Chair Group	Locale® Bench Cushions	Public Office Landscape® Seat	Plex™ Lounge Furniture	Swoop™ Lounge Seating - Fully Upholstered	Swoop Lounge Seating - Plywood	Cushion Tops	Workspaces
Price Category G																								
ZC9__ Coin Crypton - Maharam			18	16				•		•							•							
ZCF__ Coincide High Performance - Maharam	14	16	16					•		•				•			•							
ZCQ__ Colline - Maharam																								
ZC2__ Compound - Maharam [N]			16	16				•		•	•		•	8			•			•		•		
ZD2__ Disc Crypton - Maharam	14	18	16														•							
ZD4__ Divide Crypton - Maharam	14	18	16											•			•							
Z23__ Divina MD - Maharam	14	•	16	•				•	•	•	•	•	•			•	•			•		•	•	
TF__ Divina - Maharam	14	•	•	•	•			•	•	•	•	•	•	8		•	•			•	•	•	•	
TG__ Divina Melange - Maharam	14	•	•	•	•			•	•	•	•	•	•	8		•	•			•	•	•	•	
ZEM__ Emboss - Maharam [N]	14	16	16														•							
ZF1__ Fold - Maharam [N]	14	18	16					•		•							•			•				
ZH1__ Hero by Kvadrat - Maharam	14	18	16				•	•	•	•				•			•							
ZQM__ Omen - Maharam	14	16	16											•			•							
ZP1__ Pick Crypton - Maharam	14	18	16											•			•							
ZP3__ Pocket - Maharam	14		•					•		•				•			•				•		•	
ZRG__ Ring - Maharam	14	16	16														•							
ZRF__ Runner - Maharam	14	16	16														•						•	
ZSN__ Sheen - Maharam	14	18	16					•		•				•			•							
ZSE__ Steelcut - Maharam								•		•							•			•				
V25__ Steelcut Trio - Maharam	14		•					•		•						•	•			•			•	
ZS1__ Stride - Maharam	14	18	16											•			•							
ZT4__ Ticker - Maharam	14	18	16					•		•				•			•						•	•
ZVT__ Vestige - Maharam	14	16	16											•			•							
Price Category H																								
ZT__ Circles - Maharam	14															•	•						•	
ZS__ Crosspatch - Maharam	14															•	•						•	
Z2D__ Ditto - Maharam	14															•	•				•		•	
ZK__ Dot Pattern - Maharam	14	•	•	•	•			•		•		•		•		•	•						•	
Z24__ Hallingdal - Maharam	14	•	•	•				•	•	•	•	•				•	•			•		•	•	
ZQF__ Offset - Maharam	14	16	16											•			•						•	
ZL__ Small Dot Pattern - Maharam	14	•	•	•	•			•		•		•		•		•	•						•	
ZTN__ Tonus - Maharam																				•				
Price Category I																								
ZLC__ Latch - Maharam	14	18	16					•		•				•			•							
ZT2__ Teatro - Maharam		18	16					•		•														
Price Category J																								
ZT1__ Tokyo - Maharam																				•				
Price Category K																								
ZC7__ Coda by Kvadrat - Maharam	14													•								•	•	
Price Category L																								
ZMK__ Minicheck - Maharam	14	18	16					•		•				•			•							
ZPF__ Plait High Performance- Maharam	14	16	16														•							
Price Category M																								
ZF2__ Fruit - Maharam	14		16											•										
Price Category N-Z																								
No fabrics available at this time.																								

3 Available on A- and B-size Equa 2 split-pad upholstered chairs.

8 Only available on nonupholstered outer back option (PB).

14 Available on Celle UC (upholstered seat) and HC (upholstered seat with protective edge) chairs.

16 Available on Sayl Chair seat.

18 Available on Sayl Chair seat and upholstered mid-back.

Maharam® Colors — Seating

Price Category 1-2

No fabrics available at this time.

Price Category 3

Meld – Maharam

54" wide
68% post-consumer recycled polyester
32% polyester
PFOA-Free stain resistant
ZM201/466387-201 Vast
ZM202/466387-202 Panda
ZM203/466387-203 Skyline
ZM204/466387-204 Knight
ZM205/466387-205 Quill
ZM206/466387-206 Pipe
ZM207/466387-207 Grate
ZM208/466387-208 Gloss
ZM209/466387-209 Bulb
ZM210/466387-210 Bride
ZM211/466387-211 Stark
ZM212/466387-212 Seashell
ZM213/466387-213 Antler
ZM214/466387-214 Crater
ZM215/466387-215 Perennial
ZM216/466387-216 Mulberry
ZM217/466387-217 Fuchsia
ZM218/466387-218 Amethyst
ZM219/466387-219 Merlot
ZM220/466387-220 Magma
ZM221/466387-221 Rooster
ZM222/466387-222 Heat
ZM223/466387-223 Clementine
ZM224/466387-224 Fox
ZM225/466387-225 Kiss
ZM226/466387-226 Bare
ZM227/466387-227 Blonde
ZM228/466387-228 Mimosa
ZM229/466387-229 Comet
ZM230/466387-230 Honeydew
ZM231/466387-231 Wild
ZM232/466387-232 Vine
ZM233/466387-233 Seed
ZM234/466387-234 Kale

Meld continued

ZM235/466387-235 Waterfall
ZM236/466387-236 Nordic
ZM237/466387-237 Reef
ZM238/466387-238 Wave
ZM239/466387-239 Isle
ZM240/466387-240 Creek
ZM241/466387-241 Mariner
ZM242/466387-242 Globe
ZM243/466387-243 Spa

Price Category 4-9

No fabrics available at this time.

- Maharam textiles are on assigned lead times A unless otherwise noted.
- Fabric numbers are listed as Herman Miller fabric number/Maharam fabric number.

Maharam® Colors — Seating

continued

Price Category A

Price Category B

No fabrics available at this time.

Medium – Maharam	
54" wide	
100% polyester	
VM01/463490-001	Raven
VM02/463490-002	Smoke
VM03/463490-003	Alloy
VM04/463490-004	Flax
VM06/463490-006	Bark
VM07/463490-007	Espresso
VM08/463490-008	Pecan
VM12/463490-012	Pumpkin
VM13/463490-013	Persimmon
VM14/463490-014	Laser
VM16/463490-016	Port
VM22/463490-022	Marina
VM29/463490-029	Pistachio
VM32/463490-032	Prospect
VM36/463490-036	Delight
VM39/463490-039	Nautical
VM40/463490-040	Pool
VM44/463490-044	Washed
VM45/463490-045	Sculpture
VM46/463490-046	Thatched
VM47/463490-047	Hike
VM48/463490-048	Tangle
VM49/463490-049	Pacific
VM50/463490-050	Cosmic
VM51/463490-051	Cascade
VM52/463490-052	Blackberry
VM53/463490-053	Nasturtium
VM54/463490-054	Wooded

Messenger – Maharam	
54" wide	
78% recycled polyester	
15% polyester, 7% nylon	
TI01/458640-001	Balsa
TI06/458640-006	Tobacco
TI07/458640-007	Shadow *
TI08/458640-008	Bayou *
TI10/458640-010	Zinc
TI24/458640-024	Poppy
TI25/458640-025	Mao
TI29/458640-029	Onyx
TI31/458640-031	Cloud *
TI38/458640-038	Depth *
TI40/458640-040	Nile
TI41/458640-041	Azure *
TI45/458640-045	Cactus *
TI46/458640-046	Ice *
TI48/458640-048	Neon *
TI50/458640-050	Hydrangea *
TI51/458640-051	Lilac
TI52/458640-052	Chestnut
TI53/458640-053	Tangelo
TI54/458640-054	Lumine *
TI58/458640-058	Snow
TI59/458640-059	Fennel
TI60/458640-060	Peridot *
TI61/458640-061	Capri
TI62/458640-062	Ultramarine
TI63/458640-063	Squall
TI66/458640-066	Cassis
TI67/458640-067	Aster
TI68/458640-068	Spice
TI69/458640-069	Cherry
TI70/458640-070	Vibrant
TI71/458640-071	Satsuma *
TI72/458640-072	Maize

Messenger continued	
TI76/458640-076	Fossil
TI77/458640-077	Ash
TI78/458640-078	Tusk
TI79/458640-079	Oyster
TI80/458640-080	Pensive
TI81/458640-081	Husk
TI82/458640-082	Fireside
TI83/458640-083	Chili
TI84/458640-084	Robust
TI85/458640-085	Beyond
TI86/458640-086	Voyage
TI87/458640-087	Everglade
TI88/458640-088	Electric

* Colors available on 20-day lead time.

- Maharam textiles are on assigned lead times ^A unless otherwise noted.
- Fabric numbers are listed as Herman Miller fabric number/Maharam fabric number.

Maharam® Colors — Seating

continued

Price Category C

Lariat – Maharam	
54" wide	
100% vinyl	
ZLR01/440401-001	001
ZLR02/440401-002	002
ZLR03/440401-003	003
ZLR04/440401-004	004
ZLR06/440401-006	006
ZLR07/440401-007	007
ZLR08/440401-008	008
ZLR10/440401-010	010
ZLR11/440401-011	011
ZLR12/440401-012	012
ZLR13/440401-013	013
ZLR14/440401-014	014
ZLR15/440401-015	015
ZLR16/440401-016	016
ZLR18/440401-018	018
ZLR20/440401-020	020
ZLR21/440401-021	021
ZLR23/440401-023	023
ZLR24/440401-024	024
ZLR25/440401-025	025
ZLR26/440401-026	026
ZLR27/440401-027	027
ZLR28/440401-028	028
ZLR29/440401-029	029
ZLR30/440401-030	030
ZLR31/440401-031	031
ZLR32/440401-032	032
ZLR33/440401-033	033
ZLR34/440401-034	034
ZLR35/440401-035	035
ZLR36/440401-036	036
ZLR37/440401-037	037
ZLR38/440401-038	038

Manner - Maharam	
54" wide	
100% recycled polyester	
Z2701/466177-001	Magic
Z2702/466177-002	Carob
Z2703/466177-003	Porpoise
Z2704/466177-004	Flint
Z2705/466177-005	Hush
Z2706/466177-006	Nuance
Z2707/466177-007	Thicket
Z2708/466177-008	Cocoa
Z2709/466177-009	Pathway
Z2710/466177-010	Cola
Z2711/466177-011	Ember
Z2712/466177-012	Wagon
Z2713/466177-013	Ablaze
Z2714/466177-014	Peel
Z2715/466177-015	Penny
Z2716/466177-016	Butterscotch
Z2717/466177-017	Harvest
Z2718/466177-018	Lioness
Z2719/466177-019	Caper
Z2720/466177-020	Parakeet
Z2721/466177-021	Greenway
Z2722/466177-022	Aquatic
Z2723/466177-023	Cottage
Z2724/466177-024	Dahlia
Z2725/466177-025	Vivid
Z2726/466177-026	Basin
Z2727/466177-027	Schooner

Metric – Maharam	
54" wide	
51% recycled polyester	
49% polyester	
Z301/466014-001	Phantom
Z302/466014-002	Fog
Z303/466014-003	Fleece
Z304/466014-004	Sourdough
Z305/466014-005	Toffee
Z306/466014-006	Driftwood
Z307/466014-007	Mineral
Z308/466014-008	Bittersweet
Z309/466014-009	Arabica
Z310/466014-010	Cerise
Z311/466014-011	Brick
Z312/466014-012	Cardinal
Z313/466014-013	Lava
Z314/466014-014	Oriole
Z315/466014-015	Cedar
Z317/466014-017	Caramel
Z318/466014-018	Pollen
Z319/466014-019	Tupelo
Z320/466014-020	Alligator
Z321/466014-021	Envy
Z322/466014-022	Bonsai
Z323/466014-023	Tar
Z324/466014-024	Anchor
Z325/466014-025	Twilight
Z326/466014-026	Admiral
Z327/466014-027	Seaport
Z328/466014-028	Scuba

Price Category D

Mode – Maharam	
54" wide	
80% post-consumer recycled polyester	
20% polyester	
PFOA-Free stain resistant finish	
ZMD01/466337-001	Stroll
ZMD02/466337-002	Intaglio
ZMD03/466337-003	Ominous
ZMD04/466337-004	Machine
ZMD05/466337-005	Talus
ZMD06/466337-006	Marsh
ZMD07/466337-007	Hollow
ZMD08/466337-008	Sycamore
ZMD09/466337-009	Clavicle
ZMD10/466337-010	Billygoat
ZMD11/466337-011	Spindle
ZMD12/466337-012	Lemon
ZMD13/466337-013	Oxeye
ZMD14/466337-014	Henge
ZMD15/466337-015	Goldenrod
ZMD16/466337-016	Cottontail
ZMD17/466337-017	Lioness
ZMD18/466337-018	Oriole
ZMD19/466337-019	Rust
ZMD20/466337-020	Carotene
ZMD21/466337-021	Blush
ZMD22/466337-022	Vermillion
ZMD23/466337-023	Alder
ZMD24/466337-024	Kermes
ZMD25/466337-025	Barberry
ZMD26/466337-026	Petal
ZMD27/466337-027	Valley
ZMD28/466337-028	Odyssey
ZMD29/466337-029	Ballpoint
ZMD30/466337-030	Toile
ZMD31/466337-031	Paradise
ZMD32/466337-032	Angelfish
ZMD33/466337-033	Denim

Price category D continued
on next page

- Maharam textiles are on assigned lead times ^A unless otherwise noted.
- Fabric numbers are listed as Herman Miller fabric number/Maharam fabric number.

Maharam® Colors — Seating

continued

Price Category D

continued

Mode continued

ZMD34/466337-034	Crush
ZMD35/466337-035	Jetty
ZMD36/466337-036	Saltwater
ZMD37/466337-037	Mallard
ZMD38/466337-038	Celtic
ZMD39/466337-039	Eucalyptus
ZMD40/466337-040	Bonsai
ZMD41/466337-041	Sassafras
ZMD42/466337-042	Yucca
ZMD43/466337-043	Lichen

Price Category E

Focus - Maharam

57" wide

54% post-industrial recycled polyester

33% polyester

13% post-consumer recycled polyester

ZFS01/465910-001	Ivory
ZFS02/465910-002	Allow
ZFS04/465910-004	Lichen
ZFS06/465910-006	Sierra
ZFS07/465910-007	Merlot
ZFS08/465910-008	Clove
ZFS09/465910-009	Carbon
ZFS10/465910-010	Regatta
ZFS11/465910-011	Emerald

Ledger – Maharam

54" wide	
100% polyurethane	
V9G1/463770-001	001
V9G2/463770-002	002
V9G3/463770-003	003
V9G4/463770-004	004
V9G6/463770-006	006
V9G7/463770-007	007
V9GG/463770-017	017
V9GH/463770-018	018
V9GJ/463770-019	019
V9GK/463770-020	020
V9GM/463770-022	022
V9GQ/463770-025	025
V9GS/463770-026	026
V9GT/463770-027	027
V9GU/463770-028	028
V9GV/463770-029	029
V9GW/463770-030	030
V9GX/463770-031	031
V9GY/463770-032	032
V9GZ/463770-033	033
V9G10/463770-034	034
V9G11/463770-035	035
V9G12/463770-036	036
V9G13/463770-037	037
V9G14/463770-038	038

Ledger continued

V9G15/463770-039	039
V9G16/463770-040	040
V9G17/463770-041	041
V9G18/463770-042	042
V9G19/463770-043	043
V9G20/463770-044	044
V9G21/463770-045	045
V9G22/463770-046	046

Oblique - Maharam

58" wide	
100% polyester	
with stain resistant finish	
ZBQ01/466222-001	001
ZBQ02/466222-002	002
ZBQ03/466222-003	003
ZBQ04/466222-004	004
ZBQ05/466222-005	005
ZBQ06/466222-006	006
ZBQ07/466222-007	007

Pick - Maharam

58" wide	
100% polyester	
with stain resistant finish	
ZP201/466224-001	001
ZP202/466224-002	002
ZP203/466224-003	003
ZP204/466224-004	004
ZP205/466224-005	005
ZP206/466224-006	006
ZP207/466224-007	007
ZP208/466224-008	008
ZP209/466224-009	009
ZP210/466224-010	010

Skein - Maharam

54" wide

56% recycled polyester

44% polyester

Z3201/466170-001

Burrow

Z3204/466170-004

Sumac

Z3205/466170-005

Pomegranate

Z3206/466170-006

Cavern

Z3207/466170-007

Bitter

Z3208/466170-008

Cinder

Z3209/466170-009

Dock

Z3210/466170-010

Cadet

Z3211/466170-011

Marsh

Technic - Maharam

56" wide

60% post-industrial recycled polyester

40% post-consumer recycled polyester

PFOA-Free stain resistant finish

Acrylic backing

ZT301/466226-001 Cumin

ZT302/466226-002 Evergreen

ZT303/466226-003 Cobalt

ZT304/466226-004 Bear

ZT305/466226-005 Squirrel

- Maharam textiles are on assigned lead times ^A unless otherwise noted.
- Fabric numbers are listed as Herman Miller fabric number/Maharam fabric number.

Maharam® Colors — Seating

continued

Price Category F

Chock - Maharam	
59" wide	
36% rayon	
35% cotton	
29% solution-dyed post-industrial recycled nylon	
PFOA-Free stain resistant finish	
Acrylic backing	
ZCH01/466219-001	Beige
ZCH02/466219-002	Stone
ZCH03/466219-003	Brown
ZCH04/466219-004	Red
ZCH05/466219-005	Copper
ZCH07/466219-007	Smoke
ZCH08/466219-008	Ebony

Coin - Maharam	
57" wide	
43% polyester	
37% post-industrial recycled polyester	
20% post-consumer recycled polyester	
PFOA-Free stain resistant finish	
Acrylic backing	
ZC801/466233-001	Nickel
ZC802/466233-002	Diner
ZC803/466233-003	Copper
ZC804/466233-004	Maroon
ZC805/466233-005	Penny
ZC806/466233-006	Exchange
ZC807/466233-007	Lead

Coincide - Maharam	
54" wide	
100% polyester	
ZCJ01/465808-001	Mist
ZCJ02/465808-002	Drizzle
ZCJ03/465808-003	Cicada
ZCJ04/465808-004	Bungalow
ZCJ05/465808-005	Aurora
ZCJ06/465808-006	Currant
ZCJ07/465808-007	Raisin
ZCJ08/465808-008	Tranquil
ZCJ09/465808-009	Caribbean
ZCJ10/465808-010	Woodland
ZCJ11/465808-011	Acre

Crush - Maharam	
54" wide	
85% solution-dyed nylon	
13% polyester	
2% polyolefin	
VS01/464780-001	001
VS02/464780-002	002
VS05/464780-005	005
VS08/464780-008	008
VS13/464780-013	013
VS16/464780-016	016
VS17/464780-017	017
VS18/464780-018	018
VS19/464780-019	019
VS20/464780-020	020
VS22/464780-022	022
VS23/464780-023	023
VS26/464780-026	026
VS27/464780-027	027

Disc - Maharam	
57" wide	
100% polyester	
PFOA-Free stain resistant finish	
Acrylic backing	
ZD101/466221-001	Nude
ZD102/466221-002	Khaki
ZD103/466221-003	Festive
ZD104/466221-004	Vibrant
ZD105/466221-005	Somber
ZD106/466221-006	Warm
ZD107/466221-007	Steel

Divide - Maharam	
57" wide	
45% polyester	
36% post-industrial recycled polyester	
19% post-consumer recycled polyester	
PFOA-Free stain resistant finish	
Acrylic backing	
ZD301/466220-001	Ecru
ZD302/466220-002	Café
ZD303/466220-003	Concrete
ZD304/466220-004	Forest
ZD305/466220-005	Tropic
ZD306/466220-006	Lagoon
ZD307/466220-007	Mocha
ZD308/466220-008	Singe
ZD309/466220-009	Cayenne

Exchange - Maharam	
58" wide	
58% post-industrial recycled polyester	
42% post-consumer recycled polyester	
ZEE01/466027-001	Cinder
ZEE02/466027-002	Sable
ZEE04/466027-004	Gull
ZEE06/466027-006	Coastline
ZEE07/466027-007	Clay
ZEE08/466027-008	Buck
ZEE10/466027-010	Rhubarb
ZEE11/466027-011	Punch

Plait - Maharam	
58" wide	
68% recycled polyester	
32% polyester	
Z2901/466052-001	Cobblestone
Z2902/466052-002	Sachet
Z2903/466052-003	Mesa
Z2904/466052-004	Tavern
Z2905/466052-005	Sequoia
Z2906/466052-006	Rhubarb
Z2907/466052-007	Sangria
Z2908/466052-008	Reef
Z2909/466052-009	Stormy
Z2910/466052-010	Dapper

Remix - Maharam	
54" wide	
90% wool	
10% nylon	
V2601/465956-113	113
V2602/465956-123	123
V2603/465956-133	133
V2604/465956-143	143
V2605/465956-152	152
V2606/465956-163	163
V2607/465956-173	173
V2608/465956-183	183
V2609/465956-223	223
V2610/465956-233	233
V2611/465956-242	242
V2612/465956-252	252
V2613/465956-362	362
V2614/465956-373	373
V2615/465956-383	383
V2616/465956-393	393
V2617/465956-412	412
V2618/465956-422	422
V2619/465956-433	433
V2620/465956-443	443
V2621/465956-452	452
V2622/465956-543	543
V2623/465956-612	612

Price category F continued on next page

- Maharam textiles are on assigned lead times ^A unless otherwise noted.
- Fabric numbers are listed as Herman Miller fabric number/Maharam fabric number.

Maharam® Colors — Seating

continued

Price Category F

continued

Remix continued		Rove - Maharam		Seam - Maharam		Strum - Maharam	
V2624/465956-632	632	54" wide		54" wide		54" wide	
V2625/465956-643	643	100% solution-dyed polyolefin		100% polyester		100% polyurethane	
V2626/465956-653	653	with silver-based antimicrobial		PFOA-Free stain resistant finish		with silver-based antimicrobial	
V2627/465956-662	662	ZRV01/466096-001 Rice		Acrylic backing		Z3301/466122-001 Overcast	
V2628/465956-672	672	ZRV02/466096-002 Soba		ZSM01/466289-001 Reed		Z3302/466122-002 Ridge	
V2629/465956-682	682	ZRV03/466096-003 Owl		ZSM02/466289-002 Console		Z3303/466122-003 Twilight	
V2630/465956-692	692	ZRV04/466096-004 Till		ZSM03/466289-003 Play		Z3304/466122-004 Pigeon	
V2631/465956-722	722	ZRV05/466096-005 Dijon		ZSM04/466289-004 Jock		Z3305/466122-005 Char	
V2632/465956-733	733	ZRV06/466096-006 Mum		ZSM05/466289-005 Engine		Z3306/466122-006 Cabin	
V2633/465956-743	743	ZRV07/466096-007 Nasturtium		ZSM06/466289-006 Haunted		Z3307/466122-007 Bur	
V2634/465956-753	753	ZRV08/466096-008 Vixen		ZSM07/466289-007 Transmit		Z3308/466122-008 Abalone	
V2635/465956-762	762	ZRV09/466096-009 Roast		ZSM08/466289-008 Spark		Z3309/466122-009 Prawn	
V2636/465956-773	773	ZRV10/466096-010 Llama		ZSM09/466289-009 Storm		Z3310/466122-010 Gourd	
V2637/465956-783	783	ZRV11/466096-011 Rind		ZSM10/466289-010 Tunnel		Z3311/466122-011 Wheat	
V2638/465956-823	823	ZRV12/466096-012 Grackle				Z3312/466122-012 Lemongrass	
V2639/465956-842	842	ZRV13/466096-013 Indigo		Sequence - Maharam		Waxen - Maharam	
V2640/465956-852	852	ZRV14/466096-014 Drip		54" wide		54" wide	
V2641/465956-873	873	ZRV15/466096-015 Neptunia		100% solution-dyed polyolefin		100% polyester	
V2642/465956-912	912	ZRV16/466096-016 Pomelo		with silver-based antimicrobial		ZWX01/466078-001 Appear	
V2643/465956-923	923	ZRV17/466096-017 Fairy		Z3101/466179-001 Driftwood		ZWX03/466078-003 Savanna	
V2644/465956-933	933			Z3102/466179-002 Boardwalk		ZWX05/466078-005 Frozen	
V2645/465956-942	942	Runner Standard - Maharam		Z3103/466179-003 Rattan		ZWX06/466078-006 Highland	
V2646/465956-962	962	58" wide		Z3104/466179-004 Alfresco		ZWX07/466078-007 Patina	
V2647/465956-973	973	57% post-industrial recycled polyester		Z3105/466179-005 Plunge		ZWX10/466078-010 Ruby	
V2648/465956-982	982	43% post-consumer recycled polyester		Z3106/466179-006 Starboard		ZWX11/466078-011 Ember	
V2649/465956-954	954	ZRA07/466167-007 Bluff		Z3107/466179-007 Veranda		ZWX12/466078-012 Harvest	
		ZRA08/466167-008 Arid		Z3108/466179-008 Lodge		ZWX14/466078-014 Fresh	
		ZRA09/466167-009 Grove		Z3109/466179-009 Flare		ZWX16/466078-016 Jay	
		ZRA10/466167-010 Starboard				ZWX17/466078-017 Gazer	
		ZRA11/466167-011 Plot		Shuttle Standard - Maharam		ZWX19/466078-019 Bayou	
		ZRA12/466167-012 Carousel		54" wide			
				84% post-industrial recycled polyester			
				16% post-consumer recycled polyester			
				ZSS16/466168-016 Clam			
				ZSS17/466168-017 Plateau			
				ZSS18/466168-018 Shoal			

- Maharam textiles are on assigned lead times ^A unless otherwise noted.
- Fabric numbers are listed as Herman Miller fabric number/Maharam fabric number.

Maharam® Colors — Seating

continued

Price Category G

Coin Crypton - Maharam	
54" wide	
43% polyester	
37% post-industrial recycled polyester	
20% post-consumer recycled polyester	
Crypton Green finish and backing	
ZC901/466236-001	Nickel
ZC902/466236-002	Diner
ZC903/466236-003	Copper
ZC904/466236-004	Maroon
ZC905/466236-005	Penny
ZC906/466236-006	Exchange
ZC907/466236-007	Lead

Coincide High Performance-Maharam	
54" wide	
100% polyester	
ZCF02/466132-002	Drizzle
ZCF03/466132-003	Cicada
ZCF04/466132-004	Bungalow
ZCF07/466132-007	Raisin
ZCF10/466132-010	Woodland
ZCF11/466132-011	Acre

Colline - Maharam	
55" wide	
75% wool	
17% acrylic	
8% nylon	
ZCQ01/466155-108	108
ZCQ02/466155-118	118
ZCQ03/466155-148	148
ZCQ04/466155-188	188
ZCQ05/466155-228	228
ZCQ06/466155-348	348
ZCQ07/466155-448	448
ZCQ08/466155-548	548
ZCQ09/466155-568	568
ZCQ10/466155-668	668
ZCQ11/466155-688	688
ZCQ12/466155-788	788

Compound - Maharam	
54" wide	
100% polyurethane	
silane-based antimicrobial	
ZC201/466196-001	001
ZC202/466196-002	002
ZC203/466196-003	003
ZC204/466196-004	004
ZC205/466196-005	005
ZC206/466196-006	006
ZC207/466196-007	007
ZC208/466196-008	008
ZC209/466196-009	009
ZC210/466196-010	010
ZC211/466196-011	011
ZC212/466196-012	012
ZC213/466196-013	013
ZC214/466196-014	014
ZC215/466196-015	015
ZC216/466196-016	016
ZC217/466196-017	017
ZC218/466196-018	018
ZC219/466196-019	019

Disc Crypton - Maharam	
57" wide	
100% polyester	
Crypton finish and backing	
ZD204/466237-004	Vibrant
ZD205/466237-005	Somber
ZD207/466237-007	Steel

Divide Crypton - Maharam	
57" wide	
45% polyester	
36% post-industrial recycled polyester	
19% post-consumer recycled polyester	
Crypton Green finish and backing	
ZD401/466238-001	Ecru
ZD402/466238-002	Café
ZD403/466238-003	Concrete
ZD404/466238-004	Forest
ZD405/466238-005	Tropic
ZD406/466238-006	Lagoon
ZD407/466238-007	Mocha
ZD408/466238-008	Singe

Divina MD - Maharam	
59" wide	
100% wool	
Z2301/466150-193	193
Z2302/466150-203	203
Z2303/466150-213	213
Z2304/466150-293	293
Z2305/466150-343	343
Z2306/466150-353	353
Z2307/466150-363	363
Z2308/466150-413	413
Z2309/466150-433	433
Z2310/466150-453	453
Z2311/466150-613	613
Z2312/466150-633	633
Z2313/466150-653	653
Z2314/466150-673	673
Z2315/466150-683	683
Z2316/466150-713	713
Z2317/466150-733	733
Z2318/466150-743	743
Z2319/466150-753	753
Z2320/466150-773	773
Z2321/466150-783	783
Z2322/466150-813	813
Z2323/466150-843	843
Z2324/466150-873	873
Z2325/466150-913	913
Z2326/466150-943	943
Z2327/466150-973	973

Divina - Maharam	
59" wide	
100% wool	
TF01/460730-154	154
TF03/460730-171	171
TF04/460730-173	173
TF05/460730-181	181
TF06/460730-191	191
TF08/460730-224	224
TF10/460730-334	334
TF13/460730-384	384
TF14/460730-393	393
TF16/460730-444	444
TF17/460730-462	462
TF18/460730-542	542

- Maharam textiles are on assigned lead times ^A unless otherwise noted.
- Fabric numbers are listed as Herman Miller fabric number/Maharam fabric number.

Price category G continued on next page

Maharam® Colors — Seating

continued

Price Category G

continued

Divina continued		
TF19/460730-552	552	
TF20/460730-562	562	
TF22/460730-584	584	
TF23/460730-623	623	
TF25/460730-652	652	
TF26/460730-662	662	
TF27/460730-671	671	
TF29/460730-684	684	
TF30/460730-691	691	
TF31/460730-692	692	
TF33/460730-712	712	
TF37/460730-742	742	
TF41/460730-782	782	
TF42/460730-791	791	
TF43/460730-793	793	
TF47/460730-893	893	
TF49/460730-922	922	
TF51/460730-944	944	
TF53/460730-984	984	
TF55/460730-106	106	
TF56/460730-236	236	
TF57/460730-246	246	
TF58/460730-346	346	
TF59/460730-356	356	
TF60/460730-376	376	
TF61/460730-426	426	
TF62/460730-526	526	
TF63/460730-536	536	
TF64/460730-626	626	
TF65/460730-636	636	
TF66/460730-666	666	
TF67/460730-676	676	
TF68/460730-686	686	
TF69/460730-696	696	
TF70/460730-756	756	
TF71/460730-826	826	
TF72/460730-836	836	
TF73/460730-846	846	
TF74/460730-856	856	
TF75/460730-876	876	
TF76/460730-886	886	
TF77/460730-936	936	
TF78/460730-956	956	
TF79/460730-966	966	

Divina Melange — Maharam		
59" wide		
100% wool		
TG01/460830-120	120	
TG02/460830-170	170	
TG03/460830-180	180	
TG04/460830-220	220	
TG05/460830-260	260	
TG06/460830-280	280	
TG07/460830-871	871	
TG08/460830-821	821	
TG09/460830-771	771	
TG10/460830-721	721	
TG11/460830-731	731	
TG12/460830-681	681	
TG13/460830-631	631	
TG15/460830-671	671	
TG16/460830-581	581	
TG17/460830-531	531	
TG18/460830-521	521	
TG19/460830-571	571	
TG20/460830-421	421	
TG21/460830-471	471	
TG22/460830-931	931	
TG24/460830-971	971	
TG25/460830-925	925	
TG26/460830-620	620	

Emboss - Maharam		
54" wide		
100% polyurethane		
Polyester backing		
ZEM01/466281-001	Bronze	
ZEM02/466281-002	Brass	
ZEM03/466281-003	Gold	
ZEM04/466281-004	Platinum	
ZEM05/466281-005	Silver	
ZEM06/466281-006	Aqua	
ZEM07/466281-007	Aegean	
ZEM08/466281-008	Cobalt	
ZEM09/466281-009	Ultraviolet	
ZEM10/466281-010	Copper	
ZEM11/466281-011	Molten	

Fold - Maharam		
54" wide		
100% polyurethane		
Polyester backing		
ZF101/466292-001	Jet	
ZF102/466292-002	Chalk	
ZF103/466292-003	Smoke	
ZF104/466292-004	Putty	
ZF105/466292-005	Fatigue	
ZF106/466292-006	Splash	
ZF107/466292-007	Apple	
ZF108/466292-008	Moss	
ZF109/466292-009	Graphite	
ZF110/466292-010	Midnight	

Hero by Kvadrat - Maharam		
55" wide		
96% wool		
4% nylon		
ZH101/466318-101	101	
ZH102/466318-141	141	
ZH103/466318-151	151	
ZH104/466318-181	181	
ZH105/466318-191	191	
ZH106/466318-201	201	
ZH107/466318-211	211	
ZH108/466318-231	231	
ZH109/466318-311	311	
ZH110/466318-381	381	
ZH111/466318-411	411	
ZH112/466318-441	441	
ZH113/466318-451	451	
ZH114/466318-481	481	
ZH115/466318-511	511	
ZH116/466318-541	541	
ZH117/466318-551	551	
ZH118/466318-601	601	
ZH119/466318-681	681	
ZH120/466318-701	701	
ZH121/466318-711	711	

Hero by Kvadrat continued		
ZH122/466318-751	751	
ZH123/466318-791	791	
ZH124/466318-901	901	
ZH125/466318-931	931	
ZH126/466318-941	941	
ZH127/466318-981	981	
ZH128/466318-991	991	

Omen - Maharam		
54" wide		
75% polyester		
16% post-industrial recycled polyester		
9% post-consumer recycled polyester		
ZQM01/466172-001	Clam	
ZQM02/466172-002	Pewter	
ZQM03/466172-003	Hazel	
ZQM04/466172-004	Grain	
ZQM05/466172-005	Bundle	
ZQM07/466172-007	Glacier	
ZQM08/466172-008	Surf	
ZQM09/466172-009	Wade	
ZQM10/466172-010	Marble	
ZQM11/466172-011	Silt	
ZQM12/466172-012	Persimmon	
ZQM13/466172-013	Rocket	

Pick Crypton - Maharam		
54" wide		
100% polyester		
Crypton finish and backing		
ZP102/466235-002	Olive	
ZP103/466235-003	Slate	
ZP104/466235-004	Espresso	
ZP105/466235-005	Pepper	
ZP106/466235-006	Masala	
ZP107/466235-007	Fresh	
ZP108/466235-008	Cool	
ZP109/466235-009	Ink	
ZP110/466235-010	Jet	

Price category G continued on next page

- Maharam textiles are on assigned lead times [A](#) unless otherwise noted.
- Fabric numbers are listed as Herman Miller fabric number/Maharam fabric number.

Maharam® Colors — Seating

continued

Price Category G

continued

Pocket - Maharam	
54" wide	
76% recycled polyester	
24% nylon	
ZP301/466243-001	001
ZP302/466243-002	002
ZP303/466243-003	003
ZP304/466243-004	004
ZP305/466243-005	005
ZP306/466243-006	006
ZP307/466243-007	007

Ring - Maharam	
54" wide	
48% polyester	
34% post-industrial recycled polyester	
18% post-consumer recycled polyester	
ZRG02/466182-002	Flax
ZRG04/466182-004	Black
ZRG05/466182-005	Scarlet
ZRG06/466182-006	Rust
ZRG07/466182-007	Green
ZRG09/466182-009	Royal

Runner - Maharam	
54" wide	
57% post-industrial recycled polyester	
43% post-consumer recycled polyester	
ZRF01/466108-001	Bluff
ZRF02/466108-002	Arid
ZRF03/466108-003	Grove
ZRF04/466108-004	Starboard
ZRF05/466108-005	Plot
ZRF06/466108-006	Carousel

Sheen - Maharam	
54" wide	
100% polyurethane with	
silane-based antimicrobial	
ZSN01/466246-001	Sail
ZSN02/466246-002	Silver
ZSN03/466246-003	Pewter
ZSN04/466246-004	Hearth
ZSN05/466246-005	Fern
ZSN06/466246-006	Bog
ZSN07/466246-007	Cricket
ZSN08/466246-008	Clove
ZSN09/466246-009	Mystic
ZSN10/466246-010	Vat
ZSN11/466246-011	Huckleberry
ZSN12/466246-012	Mauve
ZSN13/466246-013	Brick
ZSN14/466246-014	Ruby
ZSN15/466246-015	Dragon
ZSN16/466246-016	Kumquat
ZSN17/466246-017	Cinnamon
ZSN18/466246-018	Alder
ZSN21/466246-021	Bronze

Steelcut - Maharam	
55" wide	
90% wool	
10% nylon	
ZSE01/464470-110	110
ZSE02/464470-120	120
ZSE03/464470-135	135
ZSE04/464470-140	140
ZSE05/464470-155	155
ZSE06/464470-160	160
ZSE07/464470-180	180
ZSE08/464470-190	190
ZSE09/464470-220	220
ZSE10/464470-240	240
ZSE11/464470-255	255
ZSE12/464470-265	265
ZSE13/464470-365	365
ZSE14/464470-370	370
ZSE15/464470-380	380
ZSE16/464470-435	435
ZSE17/464470-445	445
ZSE18/464470-535	535
ZSE19/464470-545	545
ZSE20/464470-550	550
ZSE21/464470-605	605
ZSE22/464470-615	615
ZSE23/464470-625	625
ZSE24/464470-635	635
ZSE25/464470-655	655
ZSE26/464470-660	660
ZSE27/464470-685	685
ZSE28/464470-695	695
ZSE29/464470-760	760
ZSE30/464470-775	775
ZSE31/464470-780	780
ZSE32/464470-820	820
ZSE33/464470-835	835
ZSE34/464470-935	935
ZSE35/464470-950	950
ZSE36/464470-975	975
ZSE37/464470-985	985

Steelcut Trio - Maharam	
55" wide	
90% wool	
10% nylon	
V2501/465906-105	105
V2502/465906-113	113
V2503/465906-124	124
V2504/465906-133	133
V2506/465906-153	153
V2507/465906-195	195
V2508/465906-205	205
V2509/465906-213	213
V2513/465906-253	253
V2514/465906-283	283
V2518/465906-383	383
V2523/465906-453	453
V2525/465906-515	515
V2526/465906-533	533
V2527/465906-553	553
V2529/465906-645	645
V2534/465906-713	713
V2542/465906-865	865
V2543/465906-883	883
V2544/465906-915	915
V2545/465906-933	933
V2546/465906-945	945
V2547/465906-953	953
V2548/465906-965	965
V2549/465906-983	983
V2550/465906-176	176
V2551/465906-226	226
V2552/465906-236	236
V2553/465906-246	246
V2554/465906-266	266
V2555/465906-276	276
V2556/465906-336	336
V2557/465906-376	376
V2558/465906-416	416
V2559/465906-426	426
V2560/465906-436	436
V2561/465906-446	446

Appendix: Maharam Colors — Seating

Price category G continued
on next page

- Maharam textiles are on assigned lead times A unless otherwise noted.
- Fabric numbers are listed as Herman Miller fabric number/Maharam fabric number.

Maharam® Colors — Seating

continued

Price Category G

continued

Appendix: Maharam Colors — Seating

Steelcut Trio <i>continued</i>		
V2562/465906-466	466	
V2563/465906-476	476	
V2564/465906-506	506	
V2565/465906-526	526	
V2566/465906-576	576	
V2567/465906-616	616	
V2568/465906-636	636	
V2569/465906-666	666	
V2570/465906-686	686	
V2571/465906-716	716	
V2572/465906-746	746	
V2573/465906-756	756	
V2574/465906-776	776	
V2575/465906-796	796	
V2576/465906-806	806	
V2577/465906-906	906	
V2578/465906-916	916	
V2579/465906-946	946	
V2580/465906-966	966	
V2581/465906-976	976	
V2582/465906-996	996	

Stride - Maharam		
58" wide		
40% post-industrial recycled polyester		
39% polyester		
21% post-consumer recycled polyester		
PFOA-Free stain resistant finish		
Acrylic backing		
ZS103/466252-003	Midnight	
ZS104/466252-004	Moss	
ZS106/466252-006	Ember	

Ticker - Maharam		
54" wide		
47% polyester		
31% post-industrial recycled polyester		
22% post-consumer recycled polyester		
Crypton green finish and backing		
ZT401/466304-001	Calm	
ZT402/466304-002	Millet	
ZT403/466304-003	Sow	
ZT404/466304-004	Beaver	
ZT405/466304-005	Patch	
ZT406/466304-006	Balloon	
ZT407/466304-007	Squad	
ZT408/466304-008	Bale	
ZT409/466304-009	Fecund	
ZT410/466304-010	Aquarium	
ZT411/466304-011	Drink	
ZT412/466304-012	Depth	
ZT413/466304-013	Far	

Vestige - Maharam		
54" wide		
71% polyester		
29% rayon		
ZVT01/466259-001	001	
ZVT02/466259-002	002	
ZVT03/466259-003	003	
ZVT04/466259-004	004	
ZVT05/466259-005	005	
ZVT06/466259-006	006	
ZVT07/466259-007	007	
ZVT08/466259-008	008	
ZVT09/466259-009	009	
ZVT10/466259-010	010	

Price Category H

Circles — Maharam		
55" wide		
70% cotton		
30% polyester		
ZT01/458310-001	Khaki	
ZT02/458310-002	Fatigue	
ZT03/458310-003	Document	
ZT04/458310-004	Engine	
ZT05/458310-005	Charcoal	

Crosspatch — Maharam		
54" wide		
75% rayon		
25% polyester		
ZS01/458920-001	Song	
ZS02/458920-002	Fresh	
ZS04/458920-004	Document	
ZS06/458920-006	Circus	
ZS08/458920-008	Grounded	

Ditto — Maharam		
54" wide		
77% recycled polyester		
23% solution dyed nylon		
Z2D1/465993-001	Nacre	
Z2D2/465993-002	Shadow	
Z2D3/465993-003	Saddle	
Z2D9/465993-009	Fern	
Z2DA/465993-010	Fountain	
Z2DB/465993-011	Cobalt	
Z2DC/465993-012	Iron	
Z2DD/465993-013	Driftwood	

Dot Pattern — Maharam		
55" wide		
71% cotton		
29% polyester		
ZK01/458300-001	Document	
ZK02/458300-002	Taupe	
ZK04/458300-004	Red	
ZK05/458300-005	Navy	

Hallingdal - Maharam		
51" wide		
70% wool		
30% rayon		
Z2401/460760-100	100	
Z2402/460760-103	103	
Z2403/460760-110	110	
Z2404/460760-113	113	
Z2405/460760-116	116	
Z2406/460760-123	123	
Z2407/460760-126	126	
Z2408/460760-130	130	
Z2409/460760-143	143	
Z2410/460760-153	153	
Z2411/460760-166	166	
Z2412/460760-173	173	
Z2413/460760-180	180	
Z2414/460760-190	190	
Z2415/460760-200	200	
Z2416/460760-220	220	
Z2417/460760-224	224	
Z2418/460760-227	227	
Z2419/460760-270	270	
Z2420/460760-350	350	
Z2421/460760-368	368	
Z2422/460760-370	370	
Z2423/460760-376	376	
Z2424/460760-390	390	
Z2425/460760-407	407	
Z2426/460760-420	420	
Z2427/460760-457	457	
Z2428/460760-526	526	
Z2429/460760-547	547	
Z2430/460760-563	563	
Z2431/460760-573	573	
Z2432/460760-590	590	
Z2433/460760-596	596	
Z2434/460760-600	600	
Z2435/460760-657	657	
Z2436/460760-660	660	
Z2437/460760-674	674	
Z2438/460760-680	680	
Z2439/460760-687	687	

Price category H continued
on next page

- Maharam textiles are on assigned lead times [A](#) unless otherwise noted.
- Fabric numbers are listed as Herman Miller fabric number/Maharam fabric number.

Maharam® Colors — Seating

continued

Price Category H

continued

Hallingdal continued

Z2440/460760-694	694
Z2441/460760-702	702
Z2442/460760-723	723
Z2443/460760-733	733
Z2444/460760-750	750
Z2445/460760-753	753
Z2446/460760-754	754
Z2447/460760-763	763
Z2448/460760-764	764
Z2449/460760-773	773
Z2450/460760-810	810
Z2451/460760-840	840
Z2452/460760-850	850
Z2453/460760-890	890
Z2454/460760-907	907
Z2455/460760-944	944
Z2456/460760-960	960
Z2457/460760-968	968
Z2458/460760-980	980

Offset – Maharam

54" wide
40% cotton
36% nylon
24% wool
ZQF01/465951-001 Passage
ZQF02/465951-002 Fieldstone
ZQF03/465951-003 Coast
ZQF04/465951-004 Esplanade
ZQF05/465951-005 Oasis
ZQF06/465951-006 Spice
ZQF07/465951-007 Bloom

Small Dot Pattern — Maharam

55" wide
71% cotton
29% polyester
ZL01/458320-001 Document
ZL02/458320-002 Sand
ZL03/458320-003 Khaki
ZL04/458320-004 Taupe
ZL05/458320-005 Charcoal
ZL06/458320-006 Document
Reverse
ZL07/458320-007 Red
ZL08/458320-008 Yellow
ZL09/458320-009 Green

Tonus - Maharam

51" wide
90% wool
10% helanka
ZTN01/460800-100 100
ZTN03/460800-109 109
ZTN05/460800-118 118
ZTN10/460800-125 125
ZTN13/460800-128 128
ZTN14/460800-129 129
ZTN15/460800-130 130
ZTN16/460800-131 131
ZTN17/460800-132 132
ZTN19/460800-135 135
ZTN21/460800-207 207
ZTN23/460800-210 210
ZTN26/460800-216 216
ZTN27/460800-240 240
ZTN29/460800-440 440
ZTN32/460800-508 508

Tonus continued

ZTN34/460800-605 605
ZTN35/460800-608 608
ZTN36/460800-609 609
ZTN37/460800-610 610
ZTN38/460800-613 613
ZTN40/460800-615 615
ZTN41/460800-619 619
ZTN51/460800-631 631
ZTN54/460800-634 634
ZTN56/460800-636 636
ZTN59/460800-690 690
ZTN62/460800-840 840
ZTN63/460800-940 940
ZTN65/460800-224 224
ZTN66/460800-244 244
ZTN67/460800-364 364
ZTN68/460800-374 374
ZTN69/460800-394 394
ZTN70/460800-424 424
ZTN71/460800-454 454
ZTN72/460800-464 464
ZTN73/460800-474 474
ZTN74/460800-554 554
ZTN75/460800-654 654
ZTN76/460800-664 664
ZTN77/460800-684 684
ZTN78/460800-754 754
ZTN79/460800-764 764
ZTN80/460800-854 854
ZTN81/460800-914 914
ZTN82/460800-934 934
ZTN83/460800-954 954
ZTN84/460800-964 964
ZTN85/460800-974 974

Price Category I

Latch - Maharam

55" wide
61% cotton
39% solution-dyed post-industrial recycled nylon
16% rayon
PFOA-Free stain resistant finish
Acrylic backing
ZLC01/466301-001 Rescue
ZLC02/466301-002 Guide
ZLC03/466301-003 Rotary
ZLC04/466301-004 Radar
ZLC05/466301-005 Sphere
ZLC06/466301-006 Solemn

Teatro - Maharam

55" wide
100% polyester
Polyester/Cotton backing
ZT201/466309-001 Crumb
ZT202/466309-002 Dorper
ZT203/466309-003 Herd
ZT204/466309-004 Deep
ZT205/466309-005 Robe
ZT206/466309-006 Heat
ZT207/466309-007 Caspian
ZT208/466309-008 Misty
ZT209/466309-009 Boulder
ZT210/466309-010 Elixir
ZT211/466309-011 Guard
ZT212/466309-012 Throne

- Maharam textiles are on assigned lead times [A](#) unless otherwise noted.
- Fabric numbers are listed as Herman Miller fabric number/Maharam fabric number.

Maharam® Colors — Seating

continued

Price Category J	Price Category K	Price Category L	Price Category M
Tokyo - Maharam 59" wide 67% wool 24% polyester 9% nylon ZT101/466247-112 112 ZT102/466247-132 132 ZT103/466247-182 182 ZT104/466247-242 242 ZT105/466247-252 252 ZT106/466247-352 352 ZT107/466247-432 432 ZT108/466247-632 632 ZT109/466247-652 652 ZT110/466247-682 682 ZT111/466247-692 692 ZT112/466247-732 732 ZT113/466247-782 782 ZT114/466247-952 952 ZT115/466247-982 982	Coda by Kvadrat - Maharam 55" wide 90% wool 10% nylon ZC701/464480-100 100 ZC702/464480-103 103 ZC703/464480-116 116 ZC704/464480-182 182 ZC705/464480-222 222 ZC706/464480-232 232 ZC707/464480-242 242 ZC708/464480-362 362 ZC709/464480-382 382 ZC710/464480-410 410 ZC711/464480-422 422 ZC712/464480-442 442 ZC713/464480-610 610 ZC714/464480-632 632 ZC715/464480-642 642 ZC716/464480-722 722 ZC717/464480-762 762 ZC718/464480-962 962	Minicheck - Maharam 55" wide 78% cotton 22% polyester PFOA-Free stain resistant finish ZMK01/466268-001 Black/White Plait High Performance - Maharam 58" wide 53% post-industrial polyester 32% polyester 15% post-consumer recycled polyester ZPF02/466138-002 Sachet ZPF05/466138-005 Sequoia ZPF08/466138-008 Reef	Fruit - Maharam 54" wide 55% cotton 32% nylon 13% post-consumer recycled polyester PFOA-Free stain resistant finish Acrylic backing ZF201/466262-001 Opal ZF202/466262-002 Lime ZF203/466262-003 Olive ZF204/466262-004 Sky ZF205/466262-005 Kernal ZF206/466262-006 Droplet ZF207/466262-007 Russet

- Maharam textiles are on assigned lead times A unless otherwise noted.
- Fabric numbers are listed as Herman Miller fabric number/Maharam fabric number.

Maharam® Colors — Seating

continued

Price Category N-Z

No fabrics available at this time.

• Maharam textiles are on assigned lead times A unless otherwise noted.
• Fabric numbers are listed as Herman Miller fabric number/Maharam fabric number.

For more information about our products and services or to see a list of dealers, please visit us at HermanMiller.com or call (800) 851 1196.

© 2018 Herman Miller, Inc., Zeeland, Michigan

® **HermanMiller**, 3D Intelligent, AO, Action Office, Aeron, ArcSpan, Aside, Avall, Avive, Bubble Lamps, Canvas Office Landscape, Caper, Celle, Co/Struc, Daisiyone, Distil, Eames, Eco-Dematerialized, Embody, Envelop, Equa 2, Ergon 3, Ethospace, Exclave, Fine-Tune, FlexFront, Flo, Formcoat, Formwork, Ground Cloth, Herman Miller for the Home, Herman Miller for Healthcare, Intersect, Kinemat, Lapjack, Layout Studio, Lifework, Limerick, Live Unframed, Living Office, Locale, Maharam, Meridian, Mirra, Passage, Pellicle, Perspectives, PostureFit, Public Office Landscape, Resolve, Rodney, Sayl, Setu, Thrive, Tu, Wishbone, and Y-Tower are among the registered trademarks of Herman Miller, Inc., and its owned subsidiaries.

™ 8Z Pellicle, About Face, AireWeave, Albert, Backfit, Bubbletack, Burdick Group, Butterfly Back, Celeste, Cellular Suspension, Clam, Compass, Connect, Cubert, DOT, Duracare, Durawrap, Eames Soft Pad, EnhancedAccess, Everywhere, Flex-Edge, Flute, Harmonic, Herman Miller Select, Hopsak 2, Intent, Iota, Jaw, Keyless Entry, Keyn Chair Group by Herman Miller, Latitude, Locale, Logic Mini, Logic Power Access Solutions, Live OS, Loop, Lyris, Lyris 2, Made-to-Measure Storage, Metaform Portfolio, Mora, Motia, Multiscrim, Nelson, Pari, Pixelated Support, Plex, PostureFit SL, Prospect, Q, Renew, Sense, Soft Pad, Stackable, Stackable Storage, Striad, Swoop, Tone, TriFlex, Twist, Ubi, Verus and Wireframe are among the trademarks of Herman Miller, Inc., and its owned subsidiaries.

SM Herman Miller Options is among the service marks of Herman Miller, Inc.

Alexander Girard® is a registered trademark of The Alexander Girard Estate.

Chemsurf® is a registered trademark of Wilsonart International.

Corian® is a registered trademark of E. I. du Pont de Nemours and Company Corporation.

Crypton® is a registered trademark of Crypton, Inc.

DACRON® is a registered trademark of INVISTA S.a r.l.

Edelman® Leather is a registered trademark of Edelman Leather, Inc.

FENIX NTM® is a registered trademark of Arpa Industriale S.p.A.

FLEXNET™ is a trademark of Milliken & Company.

Floor Saver Glide® is a registered trademark of Carpin Manufacturing, Inc.

Geiger® is a registered trademark, and Bumper™, Saiba™, and Ward Bennett™ are trademarks, of Geiger International.

Goetz™ is a trademark of Mark W. Goetz.

Hang-It-All® is a registered trademark of Lucia Eames Demetrios, d.b.a. Eames Office.

Holophane® is a registered trademark of Holophane.

Ingeo™ is a trademark of Cargill Dow LLC.

iPad® is a registered trademark of Apple, Inc.

LifeSize® is a registered trademark of LifeSize Communications, Inc.

Magis®, Bombo®, and Me Too® are registered trademarks of Magis S.p.A.

Microsoft® and Natural® Keyboard are registered trademarks of Microsoft Corporation.

Noguchi® and the Noguchi table configuration (trade dress) are registered trademarks, and Rudder Table™ is a trademark, of The Isamu Noguchi Foundation and Garden Museum.

Place Textiles® is a registered trademark of Place Textiles.

SuperSeat™ is a trademark of Dahti Seating, a division of ITW.