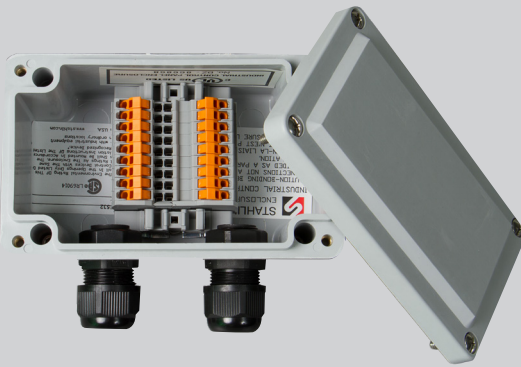


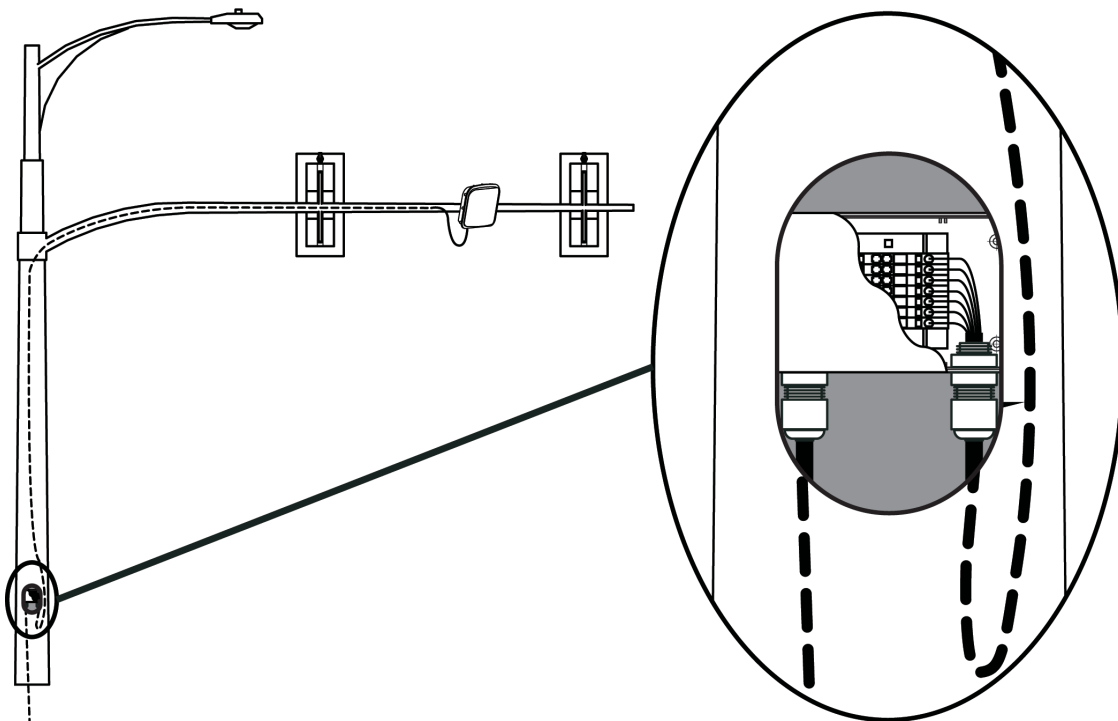
Junction box for splicing cables

The sensor cable junction box provides connection between the sensor's pigtail cable and the homerun cable to the cabinet. This box's nine terminal blocks eliminate the need to pull a connectorized cable from the sensor to the cabinet. Its small size allows for an in-line connection that will fit in a hand hole.



- NEMA type 4, 4x enclosure, providing a degree of protection against falling dirt, windblown dust, water, and ice
- Insulation displacement terminal blocks for quick wiring
- Small form factor for placement in traffic pole hand hole
- Cable grips for water resistance
- Same-side cable entry prevents cable path water trails from pooling on cable grip
- Nine terminal blocks means that the box can be used with cables with nine or fewer conductors and drains, namely the Wavetronix

SmartSensor 6-conductor cable and the 8-conductor cable



Technical specifications

Physical

- Dimensions: 6 in. x 3.6 in. x 3.1 in. (15 cm x 9 cm x 8 cm)
- Cable grip cable diameter: 0.2 in.–0.5 in. (5 mm–12.7 mm)
- Designed to meet IP 66 & NEMA 250 type 1, 3R, 4X, 6P, and 12 ratings
- Material: fiberglass
- 316 stainless steel backplate

Connector block

- 9 terminal blocks
- Connections: insulation displacement
- Nominal current IN: 17.5 A
- Nominal voltage UN: 500 V
- Maximum load current: 17.5 A
- Wire: 24–16 AWG

Ordering information

Sensor Cable Junction Box

SS-710

Accessories

SS-704 – SmartSensor 6-conductor Cable

SS-706 – SmartSensor 8-conductor Cable

SS-B01-0003/0005/0008 – Intersection Preassembled Backplate – AC

Contact us

801.734.7200

sales@wavetronix.com

www.wavetronix.com

Bid specifications

1.0 General. This item shall govern the purchase of a junction box (JB) equivalent to the Wavetronix SmartSensor cable junction box.

2.0 Physical. The JB shall not exceed 6.3 in. x 3.6 in. x 2.4 in. (16 cm x 9 cm x 6 cm) in its dimensions.

The JB's cable grip shall allow for a cable with a diameter of 0.2 in.–0.5 in. (5 mm–12.7 mm).

The JB shall be designed to meet IP 66 & NEMA 250 type 1, 3R, 4X, 6P, and 12 ratings.

The JB shall be made of fiberglass and include a 316 stainless steel backplate.

3.0 Connector block. The JB shall have nine terminal blocks; these blocks' connections shall employ insulation displacement technology. The JB shall have a nominal current of 17.5 A and a nominal voltage of 500 V. Its maximum load current shall be 17.5 A. The JB shall accept wire ranging in size from 24–16 AWG.