

kite

folding chair



kite

Kite is the perfect solution for temporary seating requirements and is ideal for use in patient rooms and virtually any area where space is at a premium. It is lightweight and can be conveniently stored on the wall when not in use.

Features

- Limited Lifetime Warranty
- Exceeds BIFMA seating test to 400 lbs.
- Wallsaver leg design protects walls from damage
- Molded plywood construction provides enhanced durability
- Contoured seat and back increase comfort level
- Seat and back cushions easily removed/replaced if necessary

Options

- Choice of two wall-mount bracket styles
- Choice of upholstered or wood back
- Custom frame finishes
- Contrasting fabrics
- CALTB 133 Compliance
- Moisture Barrier



features:



Bracket allows chair to store tight against the wall. Two designs available



Contoured seat and back cushions provide ergonomic comfort



Frame design eliminates pinch points and risk of chair folding unintentionally



Stored chair depth is less than 7 inches

Statement of Line



**Kite Folding Chair
with wood back
Model No. KT300-WDB**
W 19
D 22.75
H 32
Seat H 18
Seat W 16.25
Weight 16



**Kite Folding Chair
with upholstered back
Model No. KT300-UPB**
W 19
D 22.75
H 32
Seat H 18
Seat W 16.25
Weight 16



**Wall Mounting
Bracket
Model No. KTWB-L**
W 20
D 6
H 7.5



**Wall Mounting
Bracket
Model No. KTWB-S**
W 5
D 3
H 6



Wood finish selection:



Hardrock Maple
(HM)



Candlelight
(CL)



Rustic Cherry
(RC)



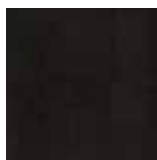
Summer Flame
(SF)



Mahogany
(MA)



Cherry Blossom
(CB)



Chocolate
(CH)



Kite folding chair (side view) shown in
Enviro Leather Cactus fabric, with Chocolate finish