

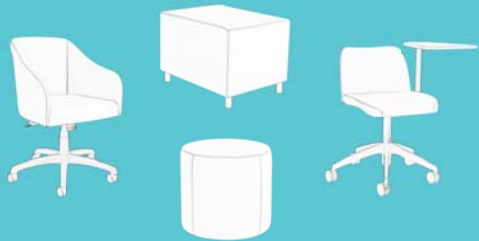


seating inc.

WOMEN  
OWNED



MAKING. WORK. BETTER. BUILDING BETTER SEATING



A COLLABORATIVE  
EXPERIENCE

# make space price book

EFFECTIVE 01 JANUARY 2018

# TERMS & CONDITIONS

---

## DISCLAIMER

The Terms & Conditions below expressly set forth Seating Inc.'s position and is not intended to be a full, comprehensive, and complete detail of each subject. Seating Inc. reserves the right to alter, change, modify, expand, or discontinue any of the policies set forth below. Seating Inc. further reserves the right to alter, change, modify, or discontinue its programs, policies, or relationship with any customer who violates Seating Inc.'s stated Terms & Conditions.

## PRICES

All prices shown within this Price Book are Suggested List Price only and are subject to change without notice. All merchandise will be invoiced at prices prevailing at time of order placement.

## ORDERS

All orders must be submitted in writing via US Mail, Fax Transmission, or Email. It is the Buyer's sole responsibility to check orders and their corresponding acknowledgements for accuracy.

## MINIMUM ORDER SIZE

No minimum order required

## ACKNOWLEDGEMENTS

Every order is acknowledged by fax within 72 hours of receipt and credit approval of an order. If you do not receive an order acknowledgement within 72 hours, please contact customer service at 800.468.2475. An acknowledgement will confirm quantities, items ordered and prices effective at the time of order acceptance. Orders will be manufactured and invoiced based upon the information on the acknowledgement. If there is any discrepancy, please notify Seating Inc. immediately, in writing.

## LEAD TIMES

Lead times are based on receipt of a complete and correct order that has been approved for credit. If an order is subject to a credit hold, it will be scheduled for shipment only after it is released from credit hold. All order acknowledgements contain an estimated shipping date, which is subject to change.

## REVISED ORDERS

Orders requiring changes to the product or additional options will not incur additional costs unless orders have been processed. Seating Inc. reserves the right to apply additional charges to the invoice for orders revised after manufacturing has begun. All changes must be in writing.

## TERMS

All merchandise will be invoiced when shipped, upon credit approval, with standard terms of 1% 10, net 30 Days. The Buyer agrees that Seating Inc. shall have the right to assess interest charges of 1.5% per month on invoices not paid and received by Seating Inc. within terms. The Buyer further agrees that Seating Inc. has the right to change terms, suspend shipments, or refuse orders from any delinquent account.

## SECURITY

The Buyer agrees that Seating Inc. maintains a security interest and title, to all merchandise sold by it to the Buyer until all monies have been paid to Seating Inc. for said merchandise.

## CANCELLATION

All orders are considered firm and are not subject to cancellation by the Buyer without written approval from Seating Inc. Management. Any cancellation requests from the Buyer must be submitted in writing within two days of receipt of purchase order to be considered for approval. Seating Inc. reserves the right to assess a Cancellation Fee of 30%, or as negotiated, for any order cancelled by the Buyer.

## SHIPMENTS

All shipments shall be made via Seating Inc.'s choice of carrier. The Buyer may specify a servicing carrier when requesting 3rd party billing. Seating Inc.'s liability ends once the Buyer signs the Bill of Lading, or otherwise receives the shipment, thus acknowledging that the merchandise was received in satisfactory condition. It is the Buyer's sole responsibility to assume liability, risk, damage, or loss during 3rd party shipment or transshipment. Further, it is the Buyer's responsibility to report damage or loss of any shipment with the appropriate carrier.

## SHIP DATES AND DELAYS

If Seating Inc. cannot ship products as scheduled due to causes beyond their reasonable control, (such as casualty, acts of nature, labor disputes, or accident; inability to obtain necessary material or transportation; or changes requested by the customer) the ship date will be extended to compensate for the delay as determined by Seating Inc.

## REDELIVERY OF FREIGHT

When redelivery of merchandise is required because the customer is not ready to accept the merchandise, and no notification of this fact is given to the factory at least two weeks prior to the scheduled ship date, the actual costs for freight, restocking and rehandling will be billed to the customer.

## RETURNS

Seating Inc. products are made-to-order and may not be returned without written approval from Seating Inc. Management. Seating Inc. reserves the right to refuse return of merchandise. All approved returns must be returned prepaid by the Buyer and are subject to a Restocking Charge of no greater than 30%. Merchandise must be returned unused, in original shipping carton with proper inner packaging.

## CHANGES

Seating Inc. reserves the right to institute changes to material, parts, or design as well as to discontinue models, options, and/or parts without any prior notice.

## DESIGN

In keeping with modern manufacturing advances, Seating Inc. reserves the right to make changes in product offering, design and materials as well as the discontinuance of parts and units when such action is deemed to be an improvement in design or function.

## SPECIAL PRODUCTS

Modifications to standard products will be considered for large quantity orders. Contact the factory for price quotations.

## TEXTILES DISCLAIMER

Seating Inc. will not be held responsible, or liable in any way, for any color variances between rolls of material due to dye lots within a shipment.

## INQUIRIES

All inquiries and correspondence should be directed to:

SEATING INC.  
PO Box 898  
Nunda, NY 14517  
Phone: 800.468.2475  
Fax: 585.468.2804  
sales@seatinginc.com

# TABLE OF CONTENTS

## IMPORTANT INFORMATION

	PAGE
WARRANTY INFORMATION	1
COM AND UPHOLSTERY COMBINATIONS (UC)	2
SHIPPING PROGRAM	3
PACKAGING AND FREIGHT CLAIMS	4

## MAKE SPACE COLLECTION



DOCK	
Bench	5-6
Square	7-8
Quarter Round	9-10
GO2	
Collaborative Swivel - Black and Chrome	11-12
Collaborative Stool - Black and Chrome	13-14
HOVER	
Portable Pod - Square	15-16
Portable Pod - Round	15-16
KUDL	
Swivel - Full and Open Back	17-18
Stool - Full and Open Back	19-20
4-Leg Wood - Full and Open Back, Standard and Counter Height	21-22
4-Leg Metal - Full and Open Back	23-24
TABLES	
Round	25-26
Square	27-28
Coffee	29-30
STATEMENT OF LINE	31-32

As the importance of a healthy workplace and a clean global environment has grown, so has our commitment to manufacturing “green” office seating products.

# MAKE SPACE COLLECTION WARRANTY INFORMATION

Seating Inc. warrants to the original end user that this product will be free from defects in its material and workmanship, subject to limitations as expressed below. The company will repair or replace, at its option without charge to the original purchaser only, defective products or parts during the following warranty periods.

This warranty shall be effective for the applicable time period beginning from date of purchase as shown on your original receipt or other proof of purchase. This warranty is your sole remedy for product defects and excludes defects due to or arising in connection with products abuse or misuse, user modifications of, or attachments to the product, including application of your own upholstery materials and products or parts not used, maintained, or installed in accordance with the company’s installation, maintenance, and/or applicable guidelines.

Coverage period:		STANDARD CARDED TEXTILES	
	Lifetime: Go2 & Kudl User weight not to exceed 300lbs	Coverage period:	3 years from date of purchase
	Lifetime: Make Space Tables	Limitations:	Normal use as determined by textile manufacturer’s guidelines
	Lifetime: Dock & Hover User weight not to exceed 400lbs per 24" of seat.	10-YEAR TEXTILES (Including Cordura® Nylon)	
	Power Port: Dock 3 years from date of purchase	Coverage period:	10 years from date of purchase
		Limitations:	Normal use as determined by textile manufacturer’s guidelines

## WARRANTY SERVICE

We work hard every day to make sure that our products reach your workplace in perfect operating condition. We also know that the minute you take delivery, you are responsible for keeping them that way. That’s why every chair we make carries the information you need to give us when service is required. If this product fails during normal use, as set forth in the limitations above, within the applicable coverage period, follow these simple steps:

### STEP 1

Locate the Seating Inc. product tag under the seat of your Seating Inc. chair.

### STEP 2

Go to [www.seatinginc.com](http://www.seatinginc.com). Go to Resources and Service Request. Click on the “Service Request” button to access our interactive Service Request Form.

Service Request



### STEP 3

Give us the info printed on the tag and tell us how we can help ... it’s that easy!

We can also advise you of the procedure to follow when making warranty claims. Call Seating Inc. at 800.468.2475, or Email [production@seatinginc.com](mailto:production@seatinginc.com) to explain the defect. Give your name, address, and phone number. Please be prepared with the model number, date of purchase and date of manufacture, found under the seat.

We will repair, or at our option, replace, the defective part, free of charge to the purchaser, provided only that the purchaser returns said part to Seating Inc., freight or other shipping charges prepaid. Do not return any parts or product without prior written authorization from Seating Inc. The company reserves the right to inspect any part or product to determine the nature of the defect and it is the purchaser’s responsibility to return the part or product to the manufacturer at his/her expense for warranty determination.

There are no other warranties, expressed or implied other than those specifically described, including without limitation any implied warranty or merchantability or of fitness for a particular purpose. We will not be responsible for incidental or consequential damages, and/or off-site labor charges.

# MAKE SPACE COLLECTION COM AND UC PROCEDURE

## CUSTOMER'S OWN MATERIAL (COM)

In order to do our best to ensure that Make Space products upholstered in COM textiles meet your expectations for appearance and durability, we require that all COM fabric, vinyl and leather is reviewed for performance and quality.

### Approval Procedure:

Contact your fabric representative to confirm fabric width, pattern repeat and direction. Include relevant information along with your sample, bearing in mind that fabric limitations such as roll width and "stretch" may impact options.

Send a minimum 6"x6" sample of the COM textile to Seating Inc. along with product style number and order quantity, and your contact information.

Seating Inc. will test for suitability and notify you of approval and specific yardage requirements.

### IMPORTANT:

- 1) Seating Inc. will not be held responsible for any COM textile wear, defects or appropriateness.
- 2) Seating Inc. reserves the right to refuse any COM material it deems inappropriate for any reason.
- 3) The buyer assumes responsibility for all costs associated with approval, shipping, receiving, storage and other charges related to a COM order.

### Ordering (for approved COM textiles)

Yardage in the price book is based on 54" non-patterned material. COM requirements may increase or decrease depending on the width of the roll, pattern repeat and direction, and the quantity of products to be manufactured. Please call the factory for final confirmation of yardage before placing your COM fabric order.

Apply Grade One pricing when you prepare a purchase order for COM.

Order COM textile from appropriate mill or jobber making sure that orders are tagged with the purchase order # that matches the order to Seating Inc.

Ship to:

Seating Inc.

60 North State St.

Nunda, NY 14517

800-468-2475.

Production lead times will be confirmed after COM textiles are received by the factory.

### IMPORTANT:

- 1) If you wish to have any unused material returned to you, indicate this on the purchase order.
- 2) You must understand and acknowledge that you, the buyer, are responsible for all handling, packaging and shipping costs to return the materials.

## UPHOLSTERY COMBINATION (UC)

A minimum of \$40 will be charged for UC. Due to variations in models and sizes, yield and/or pattern matching, additional costs may apply. Call Seating Inc. to confirm these costs.

When combining carded or graded in textiles of different grade levels, products will be priced at the higher grade level.

Indicate the pattern direction when specifying upholstery combinations in non-solid textiles, bearing in mind that fabric limitations such as roll width and "stretch" may impact options.

Refer to information above for COM.

# MAKE SPACE COLLECTION SHIPPING PROGRAM

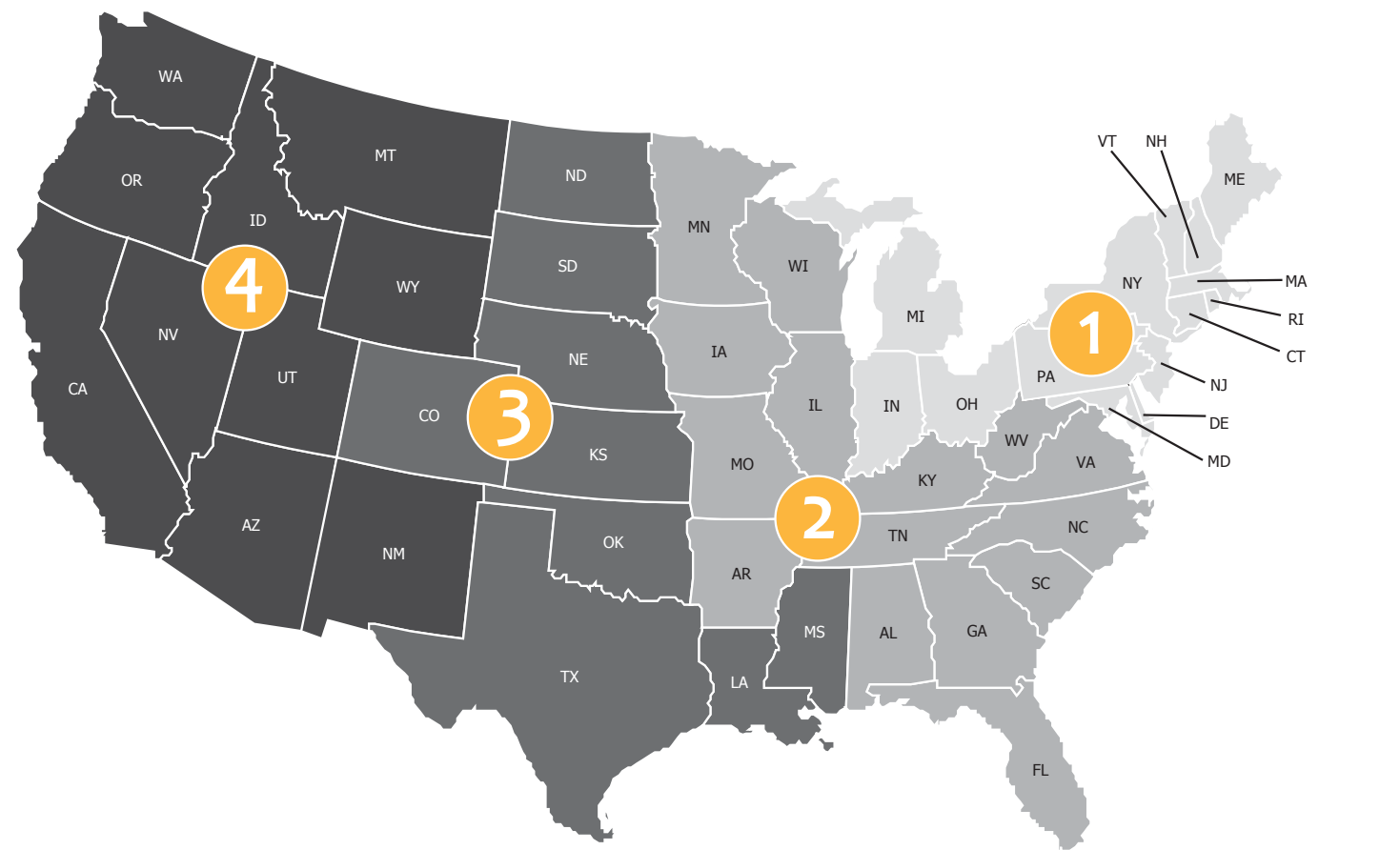
The list prices shown in this price book are shipped free of charge when the appropriate qualifications are met as outlined below. Only shipments to loading docks or approved drop off locations are eligible for the free shipping program. Special shipping circumstances will carry additional charges. These include, but are not limited to, **inside delivery, residential delivery, request for delivery appointment, overnight, 2-day and 3-day deliveries, and incorrect shipping address.** Seating Inc. reserves the right to ship via its carrier of choice and to modify its Free Shipping Program for specific accounts for any reason (i.e. credit delinquency, undeliverable address for Seating Inc.'s choice of carrier, discount programs, etc...) The zone used to determine the free shipping qualifications is based upon the ship-to destination, not upon the originating location of the order. Orders shipped to multiple locations may not be combined to qualify for free shipping.

## QUALIFICATIONS FOR FREE SHIPPING

Look in the appropriate Zone table for the qualifications for free freight on your order. If you meet, or exceed the minimum qualified number of chairs as stated below, then your order will be shipped freight free.

## ADDITIONAL CHARGES

Additional services will incur additional charges - these include, but are not limited to: driver assist, stop offs, truck ordered but not used (cancelling or changing shipment), reconsignment, driver layover, weekend deliveries, disposal of dunnage such as cardboard. Please contact Seating Inc. for an quote if you require these services.



### ZONE 1

- All orders of 11 items or more are shipped freight free.
- **UPS:** A \$12.50 per item charge for orders of 10 items or less will be added to the invoice.
- **LTL:** A \$40 per item charge for orders of 10 items or less will be added to the invoice.

Connecticut  
Delaware  
Indiana  
Maine  
Maryland  
Massachusetts  
Michigan  
New Hampshire  
New Jersey  
New York  
Ohio  
Pennsylvania  
Rhode Island  
Vermont  
Washington, DC

### ZONE 2

- All orders of 16 items or more are shipped freight free.
- **UPS:** A \$15 per item charge for orders of 15 items or less will be added to the invoice.
- **LTL:** A \$55 per item charge for orders of 15 items or less will be added to the invoice.

Alabama  
Arkansas  
Florida  
Georgia  
Illinois  
Iowa  
Kentucky  
Minnesota  
Missouri  
North Carolina  
South Carolina  
Tennessee  
Virginia  
West Virginia  
Wisconsin

### ZONE 3

- All orders of 21 items or more are shipped freight free.
- **UPS:** A \$20 per item charge for orders of 20 items or less will be added to the invoice.
- **LTL:** A \$65 per item charge for orders of 20 items or less will be added to the invoice.

Colorado  
Kansas  
Louisiana  
Mississippi  
Nebraska  
North Dakota  
Oklahoma  
South Dakota  
Texas

### ZONE 4

- All orders of 50 items or more are shipped freight free.
- **UPS:** A \$25 per item charge for orders of 50 items or less will be added to the invoice.
- **LTL:** A \$70 per item charge for orders of 50 items or less will be added to the invoice.

Arizona  
California  
Idaho  
Nevada  
New Mexico  
Montana  
Oregon  
Utah  
Washington  
Wyoming

# MAKE SPACE COLLECTION PACKAGING & FREIGHT CLAIMS

Every consideration is given to ensuring that our products are received by you, or your customer, in the same condition as when it leaves our factory. We know your order is not complete until this is accomplished. All of our products are either shipped via UPS/FedEx, common carrier, or private carrier. This is determined by the number of cartons required for shipping your order, and the destination location.

## PRIVATE CARRIER AND COMMON CARRIER

Only orders that are big enough to fill at least a truckload are considered for private carrier shipments.

For large quantity orders, we are happy to deliver cardboard wrapped, sometimes referred to as blanket wrapped, fully assembled orders. This is the most convenient way to receive chairs. Simply roll the chairs off the truck into your customer's space. Cardboard wrapping may not be suitable for all chair types and textiles. Call us directly to set up this service. Note: Customer is responsible for disposing of the cardboard.

## LTL

Products packaged for LTL shipments may use combinations of private & UPS/FedEx packaging as we see fit.

Orders that do not fill at least a truckload will be subject to shipment by LTL.

Make Space products that will be shipped using LTL are noted on each product page within this price book.

## UPS/FEDEX

Make Space products that can be shipped using UPS/FedEx are noted on each product page within this price book.

## PACKAGING

We have worked diligently with carriers to ensure that our cartons, packaging, labeling, etc., not only meet their restrictions for size and weight, but more importantly, will arrive at its destination with the least likelihood of any damage.

All cartons have:

- 350lb double wall construction
- Cardboard "cross-inserts" to prevent side impact shock to the chair
- Access holes for easy lifting
- Stapled seam for extra strength
- Foam padding to prevent impact shock to the chair

## FREIGHT CLAIMS

Even though we take every precaution to ensure your order arrives with no damage, we cannot control events that may take place in transit. It is the responsibility of the party receiving the shipment to inspect it for signs of damage before signing the bill of lading. Signing the bill of lading releases the carrier and Seating Inc. from any responsibility for damages occurring during transit.

Caution: after obtaining a clear receipt for shipment, the delivering carrier is no longer responsible for damages or shortages.

It is your responsibility to report any shortages or outward damages on the bill of lading. You protect yourself by refusing shipments showing damage or shortage until transportation carrier has noted on the delivery sheet the extent of damage or shortage.

In the event of "hidden damage" it is the responsibility of the party receiving the shipment to contact Seating Inc. immediately.

Damage to contents must be reported within 2 days from the date of delivery. If at all possible, please take pictures of the damage.

All merchandise should be retained in the original shipping container, in the same condition it was in when loss or damage was discovered.

If you experience concealed damage:

1. Call Seating Inc. to report the damage immediately.  
Then write an affidavit giving date damaged product was received and the damage incurred. If possible, take pictures of the damage.
2. Retain all merchandise in the original container.
3. Contact Seating Inc.'s shipping department (800.468.2475, [production@seatinginc.com](mailto:production@seatinginc.com)) to advise them of the damage situation and be prepared to provide detailed order and product information.
4. Send a copy of your affidavit to Seating Inc. and any pictures, if available. It will be the responsibility of Seating Inc. to file a cargo claim within prescribed time limits and to respond to any requests from the carrier for supporting documentation. The damaged product must be retained until the claim is resolved, or until the claimant is given disposition by the carrier.



# dock BENCH

- Stand alone or connected by easy to use, hidden ganging clamps, Dock's versatile seating units create unique collaborative spaces.
- 24" • 48" • 60" • 72" lengths. Custom sizes available.
- 18" Bench Height or 15" Mini (for child-centered spaces)
- 400lb weight capacity per 24" length.
- Comfortable high-density foam with upholstered seat top and foam wrapped sides.
- Built to last: reinforced seat top with durable wood frame and inner supports that won't break down or sag over time.
- Customize your Dock Bench or Mini: consider square or round legs. Choose black, chrome, or silver metallic legs. Add matching support arm.
- Add matching Swing Away, high pressure laminate, 18" round, table top arm to add functional work surface on either or both sides.
- Update your table with 8 standard Wilsonart® or Custom laminate finishes. Add an upholstery combination – the options are endless to create your unique Dock!
- Plug in and connect! Up to 3 Optional power ports may be added to any dock, each with 2 USB plugs and 1 standard electrical outlet that can be all placed on one single power cable.



model #  
DB4818 LRC TRC PPR

## pricing

### Dock Bench 18" Height

	Model #	Description	Gr 1	Gr 2	Gr 3	Gr 4	Gr 5	Gr 6	Gr 7	Gr 8	Gr 9	Gr 10
	DB2418	24x18x18	750	779	809	819	838	856	865	875	884	895
	DB4818	48x18x18	950	997	1044	1060	1090	1120	1134	1150	1164	1182
	DB6018	60x18x18	1250	1309	1368	1388	1425	1463	1480	1500	1518	1540
	DB7218	72x18x18	1450	1515	1579	1601	1643	1684	1703	1725	1744	1769
	DBCUST	Custom Size	Call For Pricing									

### Dock Mini Bench 15" Height

	Model #	Description	Gr 1	Gr 2	Gr 3	Gr 4	Gr 5	Gr 6	Gr 7	Gr 8	Gr 9	Gr 10
	DM2418	24x18x15	730	759	789	799	818	836	845	855	864	875
	DM4818	48x18x15	930	977	1024	1040	1070	1100	1114	1130	1144	1162
	DM6018	60x18x15	1230	1289	1348	1368	1405	1443	1460	1480	1498	1520
	DM7218	72x18x15	1430	1495	1559	1581	1623	1664	1683	1705	1724	1749
	DMCUST	Custom Size	Call For Pricing									

## com yardage

Model #	COM Yardage	Model #	COM Yardage
Dock Bench		Dock Mini Bench	
DB2418	1.50	DM2418	1.50
DB4818	2.25	DM4818	2.25
DB6018	2.50	DM6018	2.50
DB7218	2.75	DM7218	2.75

Please refer to page 2 to review COM procedures before submitting your order.

## freight

Model #	UPS/LTL
Dock Bench	
DB2418	UPS
DB4818	LTL
DB6018	LTL
DB7218	LTL
Dock Mini Bench	
DM2418	UPS
DM4818	UPS
DM6018	LTL
DM7218	LTL





# dock BENCH

When ordering you must specify:

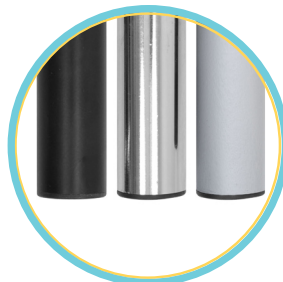
- 1) Complete model #
- 2) Leg shape and finish
- 3) Upholstery and color choice name

Then you may add additional option codes

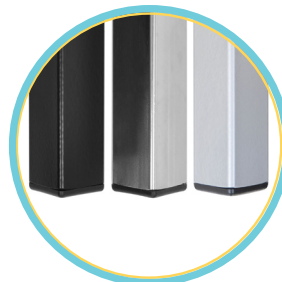
Please note:

- When ordering a swing away table top with support arm, a table top finish must also be specified to complete the order.

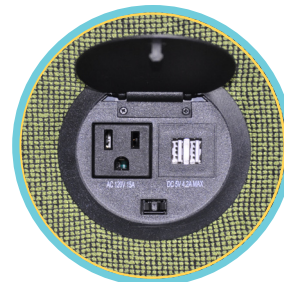
- Each Dock is custom made by craftsman who can place your power port in any area. Standard left right and center placement will be in the middle of those locations. If you would like to specify exactly where the port(s) is/are placed, please add a comment to the order.



Round Leg



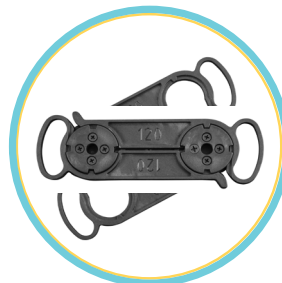
Square Leg



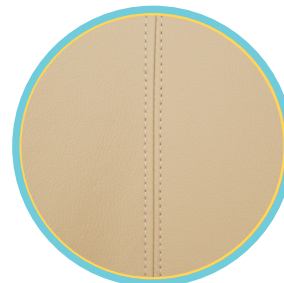
Power Port



Contrasting Edge



Ganging Connector



Stitching

## options & upgrades

Code	Description	List Price
<b>LEGS - Set of 4</b>		
LRB	Round Leg BLACK finish.	N/C
LRC	Round Leg CHROME finish.	\$25
LRSM	Round Leg SILVER METALLIC finish.	N/C
LSB	Square Leg BLACK finish.	N/C
LSC	Square Leg CHROME finish.	\$25
LSSM	Square Leg SILVER METALLIC finish.	N/C
<b>SWING AWAY TABLE TOP WITH SUPPORT ARM (Please specify Table Top Finish)</b>		
TRB	Swing away table top, RIGHT hand install, with BLACK finish support arm.	\$425
TRC	Swing away table top, RIGHT hand install, with CHROME finish support arm.	\$450
TRSM	Swing away table top, RIGHT hand install, with SILVER METALLIC finish support arm.	\$425
TLB	Swing away table top, LEFT hand install, with BLACK finish support arm.	\$425
TLC	Swing away table top, LEFT hand install, with CHROME finish support arm.	\$450
TLSM	Swing away table top, LEFT hand install, with SILVER METALLIC finish support arm.	\$425
<b>TABLE TOP FINISH</b>		
Standard Choices with matching 3mm edge: Black, Cafelle, Wild Cherry, Fonthill Pear, Designer White, Kensington Maple, Montana Walnut, or Empire Mahogany.		N/C
SL	Wilsonart® laminate finishes ending with code 60 are available standard choices.	N/C
UL	Upgrade laminate choices, call for pricing.	CFP
CE	3mm contrasting Black edge.	N/C
UE	Upgrade 3mm contrasting edge. Any color other than black.	CFP
<b>GLIDES</b>		
AHG	Adjustable height glides.	\$40
AHGV	Adjustable height VCT Floor saver glides. Prevents damage to VCT tile. Not for use on carpet.	\$60
<b>POWER PORT</b> (each power port consists of 2 USB ports and 1 standard electric outlet. (1) 72" power cable will also be provided per dock)		
PPR	Power Port, RIGHT side install.	\$215
PPL	Power Port, LEFT side install.	\$215
PPC	Power Port, CENTER front install.	\$215
<b>SPECIALTY</b>		
CAL	Flame Guard – Chair made to conform to CAL 133 spec.	\$52 per yard used
DGC	Dock ganging connector. All Dock products are pre-prepped to receive connecting bracket.	\$50
UC	Upholstery combination. See Page 2 for further instructions.	\$40

make space collection - dock bench



# dock SQUARE

- Stand alone or connected by easy to use, hidden ganging clamps, Dock's versatile seating units create unique collaborative spaces.
- 18"x18" • 24"x24" • 30"x30" square sizes. Custom sizes available.
- 18" Height or 15" Mini (for child-centered spaces)
- 400lb weight capacity. 30" Square is 800lb weight capacity.
- Comfortable high-density foam with upholstered seat top and foam wrapped sides.
- Built to last: reinforced seat top with durable wood frame and inner supports that won't break down or sag over time.
- Customize your Dock Square or Mini: consider square or round legs. Choose black, chrome, or silver metallic legs. Add matching support arm.
- Add matching Swing Away, high pressure laminate, 18" round, table top arm to add functional work surface on either or both sides.
- Update your table with 8 standard Wilsonart® or Custom laminate finishes. Add an upholstery combination – the options are endless to create your unique Dock!
- Plug in and connect! Up to 3 Optional power ports may be added to any dock, each with 2 USB plugs and 1 standard electrical outlet that can be all placed on one single power cable.



model #  
DB1818 LRC PPR

## pricing

### Dock Square 18" Height

	Model #	Description	Gr 1	Gr 2	Gr 3	Gr 4	Gr 5	Gr 6	Gr 7	Gr 8	Gr 9	Gr 10
	DB1818	18x18x18	530	571	612	626	653	679	691	705	717	733
	DB2424	24x24x18	585	632	679	695	725	755	769	785	799	817
	DB3030	30x30x18	810	886	963	989	1038	1086	1109	1135	1158	1187
	DBCUST	Custom Size	Call For Pricing									

### Dock Mini Square 15" Height

	Model #	Description	Gr 1	Gr 2	Gr 3	Gr 4	Gr 5	Gr 6	Gr 7	Gr 8	Gr 9	Gr 10
	DM1818	18x18x15	510	551	592	606	633	659	671	685	697	713
	DM2424	24x24x15	565	612	659	675	705	735	749	765	779	797
	DM3030	30x30x15	790	866	943	969	1018	1066	1089	1115	1138	1167
	DMCUST	Custom Size	Call For Pricing									

## com yardage

Model #	COM Yardage	Model #	COM Yardage
Dock Bench			
DB1818	2.00	Dock Mini Bench	
DB2424	2.25	DM1818	2.00
DB3030	3.50	DM2424	2.25
		DM3030	3.50

Please refer to page 2 to review COM procedures before submitting your order

## freight

Model #	UPS/LTL
Dock Bench	
DB1818	UPS
DB2424	UPS
DB3030	LTL
Dock Mini Bench	
DM1818	UPS
DM2424	UPS
DM3030	LTL



# dock SQUARE

When ordering you must specify:

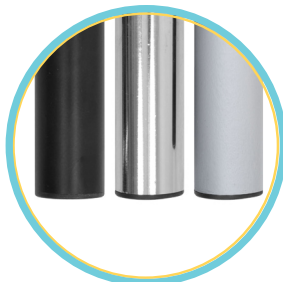
- 1) Complete model #
- 2) Leg shape and finish
- 3) Upholstery and color choice name

Then you may add additional option codes.

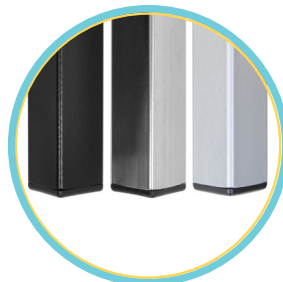
Please note:

- When ordering a swing away table top with support arm, a table top finish must also be specified to complete the order.

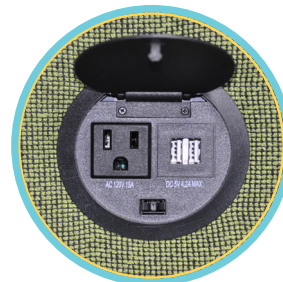
- Each Dock is custom made by craftsman who can place your power port in any area. Standard left right and center placement will be in the middle of those locations. If you would like to specify exactly where the port(s) is/are placed, please add a comment to the order.



Round Leg



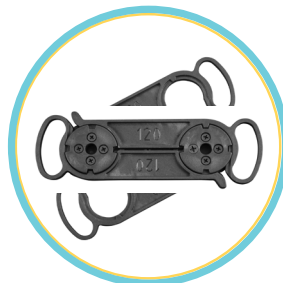
Square Leg



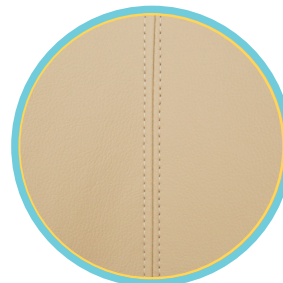
Power Port



Contrasting Edge



Ganging Connector



Stitching

## options & upgrades

Code	Description	List Price
<b>LEGS - Set of 4</b>		
LRB	Round Leg BLACK finish.	N/C
LRC	Round Leg CHROME finish.	\$25
LRSM	Round Leg SILVER METALLIC finish.	N/C
LSB	Square Leg BLACK finish.	N/C
LSC	Square Leg CHROME finish.	\$25
LSSM	Square Leg SILVER METALLIC finish.	N/C
<b>SWING AWAY TABLE TOP WITH SUPPORT ARM (Please specify Table Top Finish)</b>		
TRB	Swing away table top, RIGHT hand install, with BLACK finish support arm.	\$425
TRC	Swing away table top, RIGHT hand install, with CHROME finish support arm.	\$450
TRSM	Swing away table top, RIGHT hand install, with SILVER METALLIC finish support arm.	\$425
TLB	Swing away table top, LEFT hand install, with BLACK finish support arm.	\$425
TLC	Swing away table top, LEFT hand install, with CHROME finish support arm.	\$450
TLSM	Swing away table top, LEFT hand install, with SILVER METALLIC finish support arm.	\$425
<b>TABLE TOP FINISH</b>		
Standard Choices with matching 3mm edge: Black, Cafelle, Wild Cherry, Fonthill Pear, Designer White, Kensington Maple, Montana Walnut, or Empire Mahogany.		N/C
SL	Wilsonart® laminate finishes ending with code 60 are available standard choices.	N/C
UL	Upgrade laminate choices, call for pricing.	CFP
CE	3mm contrasting Black edge.	N/C
UE	Upgrade 3mm contrasting edge. Any color other than black.	CFP
<b>GLIDES</b>		
AHG	Adjustable height glides.	\$40
AHGV	Adjustable height VCT Floor saver glides. Prevents damage to VCT tile. Not for use on carpet.	\$60
<b>POWER PORT</b> (each power port consists of 2 USB ports and 1 standard electric outlet. (1) 72" power cable will also be provided per dock)		
PPR	Power Port, RIGHT side install.	\$215
PPL	Power Port, LEFT side install.	\$215
PPC	Power Port, CENTER front install.	\$215
<b>SPECIALTY</b>		
CAL	Flame Guard – Chair made to conform to CAL 133 spec.	\$52 per yard used
DGC	Dock ganging connector. All Dock products are pre-prepped to receive connecting bracket.	\$50
UC	Upholstery combination. See Page 2 for further instructions.	\$40

make space collection - dock square



# dock BENCH QUARTER ROUND

- Stand alone, connecting, shaping or circling unit combines with dock benches, squares and quarter rounds to create unique seating spaces.
- 30" Quarter Round. 90° Curve.
- 18" Height or 15" Mini (for child-centered spaces)
- 400lb weight capacity.
- Comfortable high-density foam with upholstered seat top and foam wrapped sides.
- Built to last: reinforced seat top with durable wood frame and inner supports that won't break down or sag over time.
- Customize your Dock Quarter Round or Mini: consider square or Choose black, chrome, or silver metallic legs. Add matching support arm.
- Add matching Swing Away, high pressure laminate, 18" round, table top arm to add functional work surface on either or both sides.
- Update your table with 8 standard Wilsonart® or Custom laminate finishes. Add an upholstery combination – the options are endless to create your unique Dock!
- Plug in and connect! Up to 3 Optional power ports may be added to any dock, each with 2 USB plugs and 1 standard electrical outlet that can be all placed on one single power cable.



model #  
DBQR LRB

## pricing

### Dock Bench Quarter Round 18" Height

Model #	Description	Gr 1	Gr 2	Gr 3	Gr 4	Gr 5	Gr 6	Gr 7	Gr 8	Gr 9	Gr 10
DBQR	30x18	995	1042	1089	1105	1135	1165	1179	1195	1209	1227



### Dock Mini Bench Quarter Round 15" Height

Model #	Description	Gr 1	Gr 2	Gr 3	Gr 4	Gr 5	Gr 6	Gr 7	Gr 8	Gr 9	Gr 10
DMQR	30x15	975	1022	1069	1085	1115	1145	1159	1175	1189	1207



## com yardage

Model #	COM Yardage
Dock Bench Quarter Round DBQR	2.00
Dock Mini Bench Quarter Round DMQR	2.00

Please refer to page 2 to review COM procedures before submitting your order

## freight

Model #	UPS/LTL
Dock Bench Quarter Round DBQR	LTL
Dock Mini Bench Quarter Round DMQR	LTL





# dock BENCH QUARTER ROUND

When ordering you must specify:

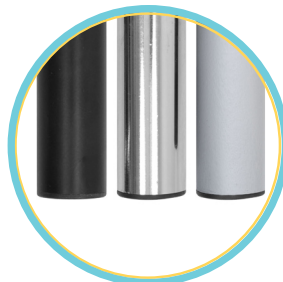
- 1) Complete model #
- 2) Leg shape and finish
- 3) Upholstery and color choice name

Then you may add additional option codes.

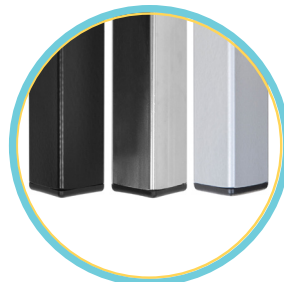
Please note:

- When ordering a swing away table top with support arm, a table top finish must also be specified to complete the order.

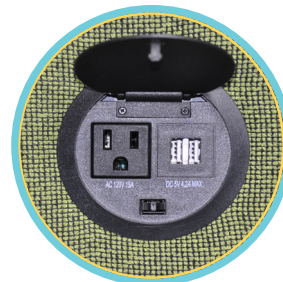
- Each Dock is custom made by craftsman who can place your power port in any area. Standard left right and center placement will be in the middle of those locations. If you would like to specify exactly where the port(s) is/are placed, please add a comment to the order.



Round Leg



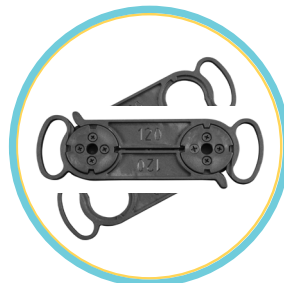
Square Leg



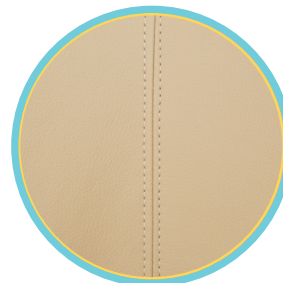
Power Port



Contrasting Edge



Ganging Connector



Stitching

## options & upgrades

Code	Description	List Price
<b>LEGS - Set of 4</b>		
LRB	Round Leg BLACK finish.	N/C
LRC	Round Leg CHROME finish.	\$25
LRSM	Round Leg SILVER METALLIC finish.	N/C
LSB	Square Leg BLACK finish.	N/C
LSC	Square Leg CHROME finish.	\$25
LSSM	Square Leg SILVER METALLIC finish.	N/C
<b>SWING AWAY TABLE TOP WITH SUPPORT ARM (Please specify Table Top Finish)</b>		
TRB	Swing away table top, RIGHT hand install, with BLACK finish support arm.	\$425
TRC	Swing away table top, RIGHT hand install, with CHROME finish support arm.	\$450
TRSM	Swing away table top, RIGHT hand install, with SILVER METALLIC finish support arm.	\$425
TLB	Swing away table top, LEFT hand install, with BLACK finish support arm.	\$425
TLC	Swing away table top, LEFT hand install, with CHROME finish support arm.	\$450
TLSM	Swing away table top, LEFT hand install, with SILVER METALLIC finish support arm.	\$425
<b>TABLE TOP FINISH</b>		
Standard Choices with matching 3mm edge:		
Black, Cafelle, Wild Cherry, Fonthill Pear, Designer White, Kensington Maple, Montana Walnut, or Empire Mahogany.		N/C
SL	Wilsonart® laminate finishes ending with code 60 are available standard choices.	N/C
UL	Upgrade laminate choices, call for pricing.	CFP
CE	3mm contrasting Black edge.	N/C
UE	Upgrade 3mm contrasting edge. Any color other than black.	CFP
<b>GLIDES</b>		
AHG	Adjustable height glides.	\$40
AHGV	Adjustable height VCT Floor saver glides. Prevents damage to VCT tile. Not for use on carpet.	\$60
<b>POWER PORT</b> (each power port consists of 2 USB ports and 1 standard electric outlet. (1) 72" power cable will also be provided per dock)		
PPR	Power Port, RIGHT side install.	\$215
PPL	Power Port, LEFT side install.	\$215
PPC	Power Port, CENTER front install.	\$215
<b>SPECIALTY</b>		
CAL	Flame Guard – Chair made to conform to CAL 133 spec.	\$52 per yard used
DGC	Dock ganging connector. All Dock products are pre-prepped to receive connecting bracket.	\$50
UC	Upholstery combination. See Page 2 for further instructions.	\$40



# go2 COLLABORATIVE SWIVEL

- Adaptable work/seating units are versatile, portable and durable.
- 300lb weight capacity.
- Utility seating coordinates with Make Space benches, chairs, stools and tables to create collaborative spaces for people to work, relax and engage.
- Durable 7-ply compound curved wood seat and high density seat foam ensure long lasting comfort.
- Paddle style, high density laminate table top with Tuck Away arm feature reduces this chair's footprint when not in use.  
Table Top: 19 5/8" Length x 8" - 16 1/2" width.
- Table top can be rotated to either side of the chair to accommodate both right and left-handed use.
- Update your table with 8 standard Wilsonart® or Custom laminate finishes.
- Go2B standard with Black arm and black spider base.
- Go2C standard with Chrome arm and Polished Aluminum spider base.
- SM Silver Metallic finish arm option.



model #  
GO2B

## pricing

### Collaborative Swivel - Black

Model #	Description	Gr 1	Gr 2	Gr 3	Gr 4	Gr 5	Gr 6	Gr 7	Gr 8	Gr 9	Gr 10
GO2B	Swivel, Black	845	880	916	928	950	973	983	995	1006	1019

### Collaborative Swivel - Chrome

Model #	Description	Gr 1	Gr 2	Gr 3	Gr 4	Gr 5	Gr 6	Gr 7	Gr 8	Gr 9	Gr 10
GO2C	Swivel, Chrome	870	905	941	953	975	998	1008	1020	1031	1044

## measurements

Model #	Style	Overall	Seat	Back
GO2	Swivel	W 30 D 30 H 32	SW 19.5 SD 18 SH 16.75-21.75	BW 19 BH 13.5

All measurements are approximate and can change depending on the configuration chosen.

## com yardage

Model #	COM Yardage
GO2	1.50

Please refer to page 2 to review COM procedures before submitting your order

## freight

Model #	UPS/LTL
GO2B	UPS
GO2C	UPS





# go2 COLLABORATIVE SWIVEL

When ordering you must specify:

- 1) Complete model #
- 2) Table top finish and edge finish
- 3) Upholstery and color choice name

Then you may add additional option codes.

Please note:

- If removing laminate table top arm, you can skip option 2) above, and add the option code (NOARM) after upholstery and color choice name.



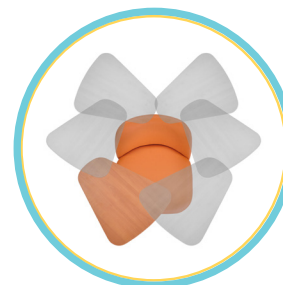
CAB



CAC



Tuck Away Arm



Rotating Arm

## options & upgrades

Code	Description	List Price
<b><u>ARM FINISH OPTION</u></b>		
SM	Silver Metallic finish arm.	N/C
<b><u>TABLE TOP FINISH</u></b>		
	Standard Choices with matching 3mm edge: Black, Cafelle, Wild Cherry, Fonthill Pear, Designer White, Kensington Maple, Montana Walnut, or Empire Mahogany.	N/C
SL	Wilsonart® laminate finishes ending with code 60 are available standard choices.	N/C
UL	Upgrade laminate choices, call for pricing.	CFP
CE	3mm contrasting Black edge.	N/C
UE	Upgrade 3mm contrasting edge. Any color other than black.	CFP
<b><u>BASE/GLIDES/CASTERS</u></b>		
CAB	26", 5 Leg Cast Aluminum Base – Black Finish. Not available on GO2C models.	\$52
CAC	26", 5 Leg Cast Aluminum Base – Chrome Finish. Not available on GO2B models.	\$52
PATL	26", Trumpet Base - Chrome Finish. Not available on GO2B models.	\$90
GLIDES	2 1/2" Carpet/Hard Floor Glides.	N/C
STW	Soft Twin Wheel Casters – For use on hard floors.	\$21
SWB	Soft Twin Wheel Braking Casters – Brakes steady chair as user sits – For use on hard floors. Only available on CAB and CAC bases.	\$41
<b><u>SPECIALTY</u></b>		
CAL	133 Flame Guard – Chair made to conform to CAL 133 spec.	\$52 per yard used
UC	Upholstery combination. See Page 2 for further instructions.	\$40
<b><u>ARMLESS OPTION</u></b>		
NOARM	GO2 armless models	DEDUCT \$400



# go2 COLLABORATIVE STOOL

- Adaptable work/stool units are versatile, portable and durable.
- 300lb weight capacity.
- 20" no-slip, height adjustable chrome finish foot ring.
- Utility seating coordinates with Make Space benches, chairs, stools and tables to create collaborative spaces for people to work, relax and engage.
- Durable 7-ply compound curved wood seat and high density seat foam ensure long lasting comfort.
- Paddle style, high density laminate table top with Tuck Away arm feature reduces this chair's footprint when not in use.  
Table Top: 19 5/8" Length x 8" - 16 1/2" width.
- Table top can be rotated to either side of the chair to accommodate both right and left-handed use.
- Update your table with 8 standard Wilsonart® or Custom laminate finishes.
- Go22B standard with Black arm and black spider base.
- Go2C standard with Chrome arm and Polished Aluminum spider base.
- SM Silver Metallic finish arm option.



model #  
GO22B

## pricing

### Collaborative Stool - Black

Model #	Description	Gr 1	Gr 2	Gr 3	Gr 4	Gr 5	Gr 6	Gr 7	Gr 8	Gr 9	Gr 10
GO22B	Stool, Black	945	980	1016	1028	1050	1073	1083	1095	1106	1119



### Collaborative Stool - Chrome

Model #	Description	Gr 1	Gr 2	Gr 3	Gr 4	Gr 5	Gr 6	Gr 7	Gr 8	Gr 9	Gr 10
GO22C	Stool, Chrome	970	1005	1041	1053	1075	1098	1108	1120	1131	1144



## measurements

Model #	Style	Overall	Seat	Back
GO22	Stool	W 30 D 30 H 39.75	SW 19.5 SD 18 SH 23.5-33	BW 19 BH 13.5

All measurements are approximate and can change depending on the configuration chosen.

## com yardage

Model #	COM Yardage
---------	-------------

GO22 1.50

Please refer to page 2 to review COM procedures before submitting your order

## freight

Model #	UPS/LTL
---------	---------

GO22B UPS  
GO22C UPS

# go2 COLLABORATIVE STOOL

When ordering you must specify:

- 1) Complete model #
- 2) Table top finish and edge finish
- 3) Upholstery and color choice name

Then you may add additional option codes.

Please note:

- If removing laminate table top arm, you can skip option 2) above, and add the option code (NOARM) after upholstery and color choice name.



CAB



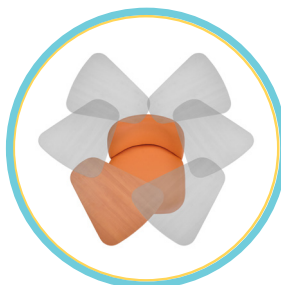
CAC



Trumpet Base Adjustable



Tuck Away Arm



Rotating Arm



Trumpet Base Teardrop

## options & upgrades

Code	Description	List Price
<b><u>ARM FINISH OPTION</u></b>		
SM	Silver Metallic finish arm.	N/C
<b><u>TABLE TOP FINISH</u></b>		
Standard Choices with matching 3mm edge: Black, Cafelle, Wild Cherry, Fonthill Pear, Designer White, Kensington Maple, Montana Walnut, or Empire Mahogany.		N/C
SL	Wilsonart® laminate finishes ending with code 60 are available standard choices.	N/C
UL	Upgrade laminate choices, call for pricing.	CFP
CE	3mm contrasting Black edge.	N/C
UE	Upgrade 3mm contrasting edge. Any color other than black.	CFP
<b><u>BASE/GLIDES/CASTERS</u></b>		
CAB	26", 5 Leg Cast Aluminum Base – Black Finish. Not available on GO22C models.	\$52
CAC	26", 5 Leg Cast Aluminum Base – Chrome Finish. Not available on GO22B models.	\$52
PATF	26", Trumpet Base with adjustable foot ring - Chrome Finish. Not available on GO22B models.	\$135
PATT	26", Trumpet Base with teardrop foot rest - Chrome Finish. Full height cylinder only (Range: 23.50" - 33.00"). Not available on GO22B models.	\$135
GLIDES	2 1/2" Carpet/Hard Floor Glides.	N/C
STW	Soft Twin Wheel Casters – For use on hard floors.	\$21
SWB	Soft Twin Wheel Braking Casters – Brakes steady chair as user sits – For use on hard floors. Only available on CAB and CAC bases.	\$41
<b><u>HEIGHT</u></b>		
MID	Mid height cylinder (Range: 19.00" - 26.50"). Not available on PATT base.	N/C
<b><u>SPECIALTY</u></b>		
CAL	133 Flame Guard – Chair made to conform to CAL 133 spec.	\$52 per yard used
UC	Upholstery combination. See Page 2 for further instructions.	\$40
<b><u>ARMLESS OPTION</u></b>		
NOARM	GO2 armless models	DEDUCT \$400

make space collection - go2 stool



- Adaptable seating units with concealed casters are versatile, portable and durable.
- 18" Height or 15" Mini (for child-centered spaces)
- 18" • 24" • 30" Square or Round size options accommodate people of different sizes or allow seating for more than one person. Custom sizes available.
- 400lb weight capacity. 30" has 800lb weight capacity.
- Built to last: reinforced seat top with durable wood frame and inner supports that won't break down or sag over time
- Comfortable high-density foam with upholstered seat top and foam wrapped sides.
- Optional glides and upholstery combinations available.



model #  
HP30R

## pricing

### Hover Round 18" Height

	Model #	Description	Gr 1	Gr 2	Gr 3	Gr 4	Gr 5	Gr 6	Gr 7	Gr 8	Gr 9	Gr 10
	HP18R	18 Round, 18" Height	520	549	579	589	608	626	635	645	654	665
	HP24R	24 Round, 18" Height	575	622	669	685	715	745	759	775	789	807
	HP30R	30 Round, 18" Height	800	876	953	979	1028	1076	1099	1125	1148	1177
	HPCUST	Custom Size	Call For Pricing									

### Hover Square 18" Height

	Model #	Description	Gr 1	Gr 2	Gr 3	Gr 4	Gr 5	Gr 6	Gr 7	Gr 8	Gr 9	Gr 10
	HP18S	18 Square, 18" Height	530	571	612	626	653	679	691	705	717	733
	HP24S	24 Square, 18" Height	585	632	679	695	725	755	769	785	799	817
	HP30S	30 Square, 18" Height	810	886	963	989	1038	1086	1109	1135	1158	1187
	HPCUST	Custom Size	Call For Pricing									

### Hover Mini Round 15" Height

	Model #	Description	Gr 1	Gr 2	Gr 3	Gr 4	Gr 5	Gr 6	Gr 7	Gr 8	Gr 9	Gr 10
	HM18R	18 Round, 15" Height	500	529	559	569	588	606	615	625	634	645
	HM24R	24 Round, 15" Height	555	602	649	665	695	725	739	755	769	787
	HM30R	30 Round, 15" Height	780	856	933	959	1008	1056	1079	1105	1128	1157
	HMCUST	Custom Size	Call For Pricing									

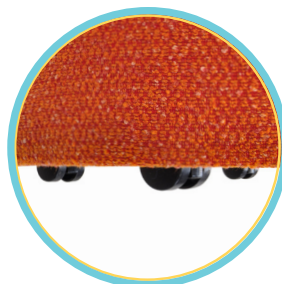
### Hover Mini Square 15" Height

	Model #	Description	Gr 1	Gr 2	Gr 3	Gr 4	Gr 5	Gr 6	Gr 7	Gr 8	Gr 9	Gr 10
	HM18S	18 Square, 15" Height	510	551	592	606	633	659	671	685	697	713
	HM24S	24 Square, 15" Height	565	612	659	675	705	735	749	765	779	797
	HM30S	30 Square, 15" Height	790	866	943	969	1018	1066	1089	1115	1138	1167
	HMCUST	Custom Size	Call For Pricing									

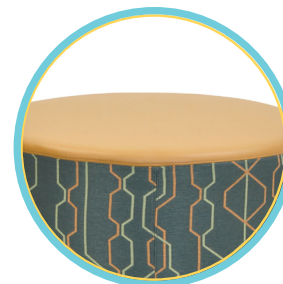
When ordering you must specify:

- 1) Complete model #
- 2) Upholstery and color choice name

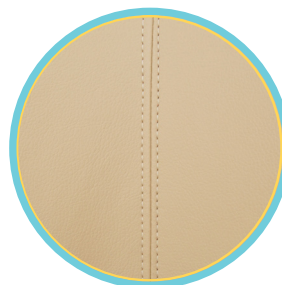
Then you may add additional option codes.



Concealed Carpet Casters



Upholstery Combination



Stitching

## options & upgrades

Code	Description	List Price
<b><u>GLIDES/CASTERS</u></b>		
HGLD	3/4" Nylon Nail-in Glides.	N/C
<b><u>SPECIALTY</u></b>		
CAL	133 Flame Guard – Chair made to conform to CAL 133 spec.	\$52 per yard used
UC	Upholstery combination. See Page 2 for further instructions.	\$40

## com yardage

Model #	COM Yardage	Model #	COM Yardage
Hover Round		Hover Mini Round	
HP18R	1.25	HM18R	1.25
HP24R	2.25	HM24R	2.25
HP30R	2.50	HM30R	2.50
Hover Square		Hover Mini Square	
HP18S	2.00	HM18S	2.00
HP24S	2.25	HM24S	2.25
HP30S	3.50	HM30S	3.50

\*Please refer to page 2 to review COM procedures before submitting your order

## freight

Model #	UPS/LTL
Hover Round	
HP18R	UPS
HP24R	UPS
HP30R	LTL
Hover Square	
HP18S	UPS
HP24S	UPS
HP30S	LTL
Hover Mini Round	
HM18R	UPS
HM24R	UPS
HM30R	LTL
Hover Mini Square	
HM18S	UPS
HM24S	UPS
HM30S	LTL





- Attractive, generously proportioned form combines comfort and style.
- 3", high-density foam seat with comfortable padded back.
- 300lb weight capacity.
- Choose swivel or swivel tilt controls.
- Optional rotating arm with sturdy, round or paddle style, high pressure laminate tops and available fold away feature. Swing away table with rotating arm is only available on KF E20 or KO E20 models.
- Table top can be rotated to either side of the chair to accommodate both right and left-handed use.  
Paddle Table Top: 19 5/8" Length x 8" - 16 1/2" width.  
Round Table Top: 18" Diameter.
- Update your table with 8 standard Wilsonart® or Custom laminate finishes.
- Standard black composite base with casters.
- Customize your Kudl with optional base, glides, and caster options.
- Open and Full back models available.



model #  
KF E20 KRTC CAC

## pricing

### Kudl Swivel Full Back

	Model #	Description	Gr 1	Gr 2	Gr 3	Gr 4	Gr 5	Gr 6	Gr 7	Gr 8	Gr 9	Gr 10
	KF E20	Swivel	950	1015	1079	1101	1143	1184	1203	1225	1244	1269
	KF E21	Swivel Tilt	995	1060	1124	1146	1188	1229	1248	1270	1289	1314

### Kudl Swivel Open Back

	Model #	Description	Gr 1	Gr 2	Gr 3	Gr 4	Gr 5	Gr 6	Gr 7	Gr 8	Gr 9	Gr 10
	KO E20	Swivel	970	1029	1088	1108	1145	1183	1200	1220	1238	1260
	KO E21	Swivel Tilt	1015	1074	1133	1153	1190	1228	1245	1265	1283	1305

## measurements

Model #	Style	Overall	Seat	Back	Arm Height
KF	Full Back	W 25 D 26 H 33.5	SW 21 SD 19 SH 16.5-21.25	BH 16.5	9
KO	Open Back	W 25 D 26 H 33.5	SW 21 SD 19 SH 16.5-21.25	BH 16.5	9

All measurements are approximate and can change depending on the configuration chosen.

## com yardage

Model #	COM Yardage
KF	2.75
KO	2.50

Please refer to page 2 to review COM procedures before submitting your order

## freight

Model #	UPS/LTL
KF E20	LTL
KF E21	LTL
KO E20	LTL
KO E21	LTL



When ordering you must specify:

- 1) Complete model #
- 2) Upholstery and color choice name

Then you may add additional option codes.

Please note:

- When ordering a swing away table with rotating arm, a table top finish must also be specified to complete the order.

**- Swing away table with rotating arm is only available on KF E20 or KO E20 Models.**



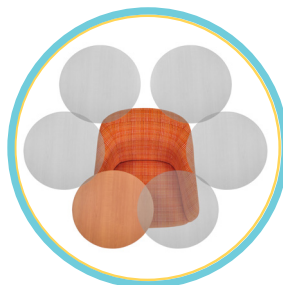
Round Table



Paddle Table



Flip Down Arm



Rotating Arm



Traditional Wood Base

## options & upgrades

Code	Description	List Price
<b><u>SWING AWAY TABLE TOP WITH ROTATING ARM (Available with E20 Mechanism only) (Please specify Table Top Finish)</u></b>		
KPTB	Swing away PADDLE table top with BLACK finish rotating arm.	\$425
KPTC	Swing away PADDLE table top with CHROME finish rotating arm.	\$450
KPTSM	Swing away PADDLE table top with SILVER METALLIC finish rotating arm.	\$425
KRTB	Swing away ROUND table top with BLACK finish rotating arm.	\$425
KRTC	Swing away ROUND table top with CHROME finish rotating arm.	\$450
KRTSM	Swing away ROUND table top with SILVER METALLIC finish rotating arm.	\$425
<b><u>TABLE TOP FINISH</u></b>		
Standard Choices with matching 3mm edge: Black, Cafelle, Wild Cherry, Fonthill Pear, Designer White, Kensington Maple, Montana Walnut, or Empire Mahogany.		N/C
SL	Wilsonart® laminate finishes ending with code 60 are available standard choices.	N/C
UL	Upgrade laminate choices, call for pricing.	CFP
CE	3mm contrasting Black edge.	N/C
UE	Upgrade 3mm contrasting edge. Any color other than black.	CFP
<b><u>FLIP DOWN TABLE TOP</u></b>		
KFD	Flip down table top mechanism for table top. Used with rotating arm.	\$250
<b><u>BASE/GLIDES/CASTERS</u></b>		
BSB	25", 5 Leg Black Composite Spider Base – Black finish with 75mm non-hooded carpet casters.	\$15
CAB	26", 5 Leg Cast Aluminum Base – Black Finish.	\$52
CAC	26", 5 Leg Cast Aluminum Base – Chrome Finish.	\$52
PAB	25", 5 Leg Cast Aluminum Spider Base – Polished aluminum finish with 75mm non-hooded carpet casters.	\$52
PATL	26", Trumpet Base - Chrome Finish.	\$90
WB	26" Traditional Wood Base – 2" hooded ball casters with bronze finish. Standard wood finish choices (matching wood finish available. See Code MWF): Black, Cafelle, Wild Cherry, Fonthill Pear, Designer White, Kensington Maple, Montana Walnut, or Empire Mahogany.	\$227
MWF	Matching wood finish for wood base (WB) - A wood sample chip must be sent to Seating Inc. for wood finish matching.	\$75
GLIDES	2 1/2" Carpet/Hard Floor Glides.	N/C
STW	Soft Twin Wheel Casters – For use on hard floors.	\$21
SWB	Soft Twin Wheel Braking Casters – Brakes steady chair as user sits – For use on hard floors. Only available on Standard base, CAB and CAC bases.	\$41
<b><u>SPECIALTY</u></b>		
CAL	133 Flame Guard – Chair made to conform to CAL 133 spec.	\$52 per yard used
UC	Upholstery combination. See Page 2 for further instructions.	\$40




- Attractive, generously proportioned form combines comfort and style.
- 3", high-density foam seat with comfortable padded back.
- 300lb weight capacity.
- Optional rotating arm with sturdy, round or paddle style, high pressure laminate tops and available fold away feature.
- Table top can be rotated to either side of the chair to accommodate both right and left-handed use.  
Paddle Table Top: 19 5/8" Length x 8" - 16 1/2" width.  
Round Table Top: 18" Diameter.
- Update your table with 8 standard Wilsonart® or Custom laminate finishes.
- Standard black composite base with full height cylinder (seat height range: 23.5" - 33") and a 20" no-slip, height adjustable chrome finish foot ring. Mid height cylinders and alternate stool base options available.
- Customize your Kudl with optional base, glides, and caster options.
- Open and Full back models available.




model #  
KO E20S PATT

## pricing

### Kudl Stool Full Back

	Model #	Description	Gr 1	Gr 2	Gr 3	Gr 4	Gr 5	Gr 6	Gr 7	Gr 8	Gr 9	Gr 10
	KF E20S	Swivel Stool	1050	1115	1179	1201	1243	1284	1303	1325	1344	1369

### Kudl Stool Open Back

	Model #	Description	Gr 1	Gr 2	Gr 3	Gr 4	Gr 5	Gr 6	Gr 7	Gr 8	Gr 9	Gr 10
	KO E20S	Swivel Stool	1070	1129	1188	1208	1245	1283	1300	1320	1338	1360

## measurements

Model #	Style	Overall	Seat	Back	Arm Height
KF E20S	Full Back	W 25 D 26 H 40.5	SW 21 SD 19 SH 23.5-33	BH 16.5	9
KO E20S	Open Back	W 25 D 26 H 40.5	SW 21 SD 19 SH 23.5-33	BH 16.5	9

All measurements are approximate and can change depending on the configuration chosen.

## com yardage

Model #	COM Yardage
KF	2.75
KO	2.50

Please refer to page 2 to review COM procedures before submitting your order

## freight

Model #	UPS/LTL
KF E20S	LTL
KO E20S	LTL

When ordering you must specify:

- 1) Complete model #
- 2) Upholstery and color choice name

Then you may add additional option codes.

Please note:

- When ordering a swing away table with rotating arm, a table top finish must also be specified to complete the order.



Round Table Top



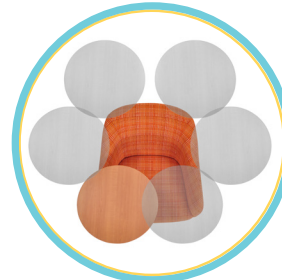
Paddle Table Top



Trumpet Base Adjustable



Flip Down Arm



Rotating Arm



Trumpet Base Teardrop

## options & upgrades

Code	Description	List Price
<b><u>SWING AWAY TABLE TOP WITH ROTATING ARM (Please specify Table Top Finish)</u></b>		
KPTB	Swing away PADDLE table top with BLACK finish rotating arm.	\$425
KPTC	Swing away PADDLE table top with CHROME finish rotating arm.	\$450
KPTSM	Swing away PADDLE table top with SILVER METALLIC finish rotating arm.	\$425
KRTB	Swing away ROUND table top with BLACK finish rotating arm.	\$425
KRTC	Swing away ROUND table top with CHROME finish rotating arm.	\$450
KRTSM	Swing away ROUND table top with SILVER METALLIC finish rotating arm.	\$425
<b><u>TABLE TOP FINISH</u></b>		
Standard Choices with matching 3mm edge:		
Black, Cafelle, Wild Cherry, Fonthill Pear, Designer White, Kensington Maple, Montana Walnut, or Empire Mahogany.		N/C
SL	Wilsonart® laminate finishes ending with code 60 are available standard choices.	N/C
UL	Upgrade laminate choices, call for pricing.	CFP
CE	3mm contrasting Black edge.	N/C
UE	Upgrade 3mm contrasting edge. Any color other than black.	CFP
<b><u>FLIP DOWN TABLE TOP</u></b>		
KFD	Flip down table top mechanism for table top. Used with rotating arm.	\$250
<b><u>BASE/GLIDES/CASTERS</u></b>		
BSB	25", 5 Leg Black Composite Spider Base – Black finish with 75mm non-hooded carpet casters.	\$15
CAB	26", 5 Leg Cast Aluminum Base – Black Finish.	\$52
CAC	26", 5 Leg Cast Aluminum Base – Chrome Finish.	\$52
PAB	25", 5 Leg Cast Aluminum Spider Base – Polished aluminum finish with 75mm non-hooded carpet casters.	\$52
PATF	26", Trumpet Base with adjustable foot ring - Chrome Finish.	\$135
PATT	26", Trumpet Base with teardrop foot rest - Chrome Finish.	\$135
GLIDES	2 1/2" Carpet/Hard Floor Glides.	N/C
STW	Soft Twin Wheel Casters – For use on hard floors.	\$21
SWB	Soft Twin Wheel Braking Casters – Brakes steady chair as user sits – For use on hard floors. Only available on Standard base, CAB and CAC bases.	\$41
<b><u>HEIGHT</u></b>		
MID	Mid height cylinder (Range: 19.00" - 26.50"). Not available on PATT base.	N/C
<b><u>SPECIALTY</u></b>		
CAL	133 Flame Guard – Chair made to conform to CAL 133 spec.	\$52 per yard used
UC	Upholstery combination. See Page 2 for further instructions.	\$40



# kudl 4-LEG WOOD


- Attractive, generously proportioned form combines comfort and style.
- 3", high-density foam seat with comfortable padded back.
- 300lb weight capacity.
- 4-leg solid beech wood legs with glides - choose from 8 standard wood colors or available matching wood finish.
- Standard seat height is 18".
- Tall model has a 25" counter height seat with wood foot rail.
- 90° left and right swivel with memory return option available.
- Open and Full back models available.




model #  
KF4W

## pricing


### Kudl 4-Leg Wood Full Back

	Model #	Description	Gr 1	Gr 2	Gr 3	Gr 4	Gr 5	Gr 6	Gr 7	Gr 8	Gr 9	Gr 10
	KF4W	4-Leg Wood	1280	1345	1409	1431	1473	1514	1533	1555	1574	1599


### Kudl 4-Leg Wood Open Back

	Model #	Description	Gr 1	Gr 2	Gr 3	Gr 4	Gr 5	Gr 6	Gr 7	Gr 8	Gr 9	Gr 10
	KO4W	4-Leg Wood	1300	1359	1418	1438	1475	1513	1530	1550	1568	1590

### Kudl 4-Leg Tall Wood Full Back - Counter Height

	Model #	Description	Gr 1	Gr 2	Gr 3	Gr 4	Gr 5	Gr 6	Gr 7	Gr 8	Gr 9	Gr 10
	KF4T	4-Leg Wood Tall	1380	1445	1509	1531	1573	1614	1633	1655	1674	1699

### Kudl 4-Leg Tall Wood Open Back - Counter Height

	Model #	Description	Gr 1	Gr 2	Gr 3	Gr 4	Gr 5	Gr 6	Gr 7	Gr 8	Gr 9	Gr 10
	KO4T	4-Leg Wood Tall	1400	1459	1518	1538	1575	1613	1630	1650	1668	1690



# kudl 4-LEG WOOD

When ordering you must specify:

- 1) Complete model #
- 2) Wood frame finish color
- 3) Upholstery and color choice name

Then you may add additional option codes.



Swivel Left 90°



Swivel Return Center



Swivel Right 90°



Tall Base Wood Foot Rail

## options & upgrades

### WOOD FRAME FINISH

Standard Choices (matching wood finish available):

Black, Cafelle, Wild Cherry, Fonthill Pear, Designer White, Kensington Maple, Montana Walnut, or Empire Mahogany.

MWF Matching wood finish - A wood sample chip must be sent to Seating Inc. for wood finish matching.

N/C

\$75

### SPECIALTY

CAL 133 Flame Guard – Chair made to conform to CAL 133 spec.

\$52 per yard used

KMR 90° left and right swivel with memory return

\$50

UC Upholstery combination. See Page 2 for further instructions.

\$40

## measurements

Model #	Style	Overall	Seat	Back	Arm Height
KF4W	Full Back	W 25 D 26 H 33.5	SW 21 SD 19 SH 18	BH 16.5	9
KO4W	Open Back	W 25 D 26 H 33.5	SW 21 SD 19 SH 18	BH 16.5	9
KF4T	Full Back Tall	W 25 D 26 H 33.5	SW 21 SD 19 SH 25	BH 16.5	9
KO4T	Open Back Tall	W 25 D 26 H 33.5	SW 21 SD 19 SH 25	BH 16.5	9

All measurements are approximate and can change depending on the configuration chosen.

## com yardage

Model #	COM Yardage
KF	2.75
KO	2.50

Please refer to page 2 to review COM procedures before submitting your order

## freight

Model #	UPS/LTL
KF4W	LTL
KO4W	LTL
KF4T	LTL
KO4T	LTL





# kudl 4-LEG METAL

- Attractive, generously proportioned form combines comfort and style.
- 3", high-density foam seat with comfortable padded back.
- 300lb weight capacity.
- 1" Round, 14 guage steel legs with black ball glides. Insert glides available.
- Choose Black, Chrome, or Silver Metallic finish legs.
- 18" seat height.
- 90° left and right swivel with memory return option available.
- Open and Full back models available.



model #  
KO4B

## pricing

### Kudl 4-Leg Metal Full Back



Model #	Description	Gr 1	Gr 2	Gr 3	Gr 4	Gr 5	Gr 6	Gr 7	Gr 8	Gr 9	Gr 10
KF4B	4-Leg Metal, Black	910	975	1039	1061	1103	1144	1163	1185	1204	1229
KF4C	4-Leg Metal, Chrome	935	1000	1064	1086	1128	1169	1188	1210	1229	1254
KF4SM	4-Leg Metal, Silver Metallic	910	975	1039	1061	1103	1144	1163	1185	1204	1229

### Kudl 4-Leg Metal Open Back



Model #	Description	Gr 1	Gr 2	Gr 3	Gr 4	Gr 5	Gr 6	Gr 7	Gr 8	Gr 9	Gr 10
KO4B	4-Leg Metal, Black	930	989	1048	1068	1105	1143	1160	1180	1198	1220
KO4C	4-Leg Metal, Chrome	955	1014	1073	1093	1130	1168	1185	1205	1223	1245
KO4SM	4-Leg Metal, Silver Metallic	930	989	1048	1068	1105	1143	1160	1180	1198	1220

## measurements

Model #	Style	Overall	Seat	Back	Arm Height
KF4	Full Back	W 25 D 26 H 33.5	SW21 SD 19 SH 18	BH 16.5	9
KO4	Open Back	W 25 D 26 H 33.5	SW 21 SD 19 SH 18	BH 16.5	9

All measurements are approximate and can change depending on the configuration chosen.

## com yardage

Model #	COM Yardage
KF	2.75
KO	2.50

Please refer to page 2 to review COM procedures before submitting your order

## freight

Model #	UPS/LTL
KF4B	LTL
KF4C	LTL
KF4SM	LTL
KO4B	LTL
KO4C	LTL
KO4SM	LTL



# kudl 4-LEG METAL

When ordering you must specify:

- 1) Complete model #
- 2) Upholstery and color choice name

Then you may add additional option codes.



Swivel Left 90°



Swivel Return Center



Swivel Right 90°



Legs

## options & upgrades

Code	Description	List Price
<b><u>SPECIALTY</u></b>		
CAL	133 Flame Guard – Chair made to conform to CAL 133 spec.	\$52 per yard used
KMR	90° left and right swivel with memory return	\$50
UC	Upholstery combination. See Page 2 for further instructions.	\$40

make space collection - kudl 4-leg metal



# make space table ROUND

- 18" • 24" • 30" • 36" • 42" Round Table Tops
- Available in 16" or 21" heights
- 1 ¼" High density laminate top with Standard Wilsonart®  
Table top finishes with soft matching 3mm edge:  
Black, Cafelle, Wild Cherry, Fonthill Pear, Designer White,  
Kensington Maple, Montana Walnut, or Empire Mahogany.
- 1½" round or square steel legs with black insert glides and  
welded connecting plates.
- Choose Black, Chrome, or Silver Metallic finish legs.
- CAUTION! Do not sit or stand on tables.



model #  
MS30R MLSC AHG

## pricing

### Table Round 16" & 21" height

	Model #	Description	List Price	Freight
	MS18R	18" Round, 16" Height	462	UPS
	MT18R	18" Round, 21" Height	462	UPS
	MS24R	24" Round, 16" Height	466	UPS
	MT24R	24" Round, 21" Height	466	UPS
	MS30R	30" Round, 16" Height	628	UPS
	MT30R	30" Round, 21" Height	628	UPS
	MS36R	36" Round, 16" Height	640	LTL
	MT36R	36" Round, 21" Height	640	LTL
	MS42R	42" Round, 16" Height	660	LTL
	MT42R	42" Round, 21" Height	660	LTL

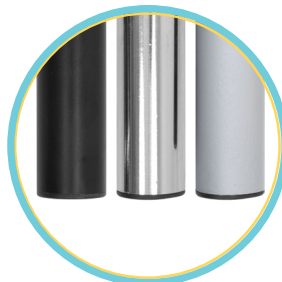


# make space table ROUND

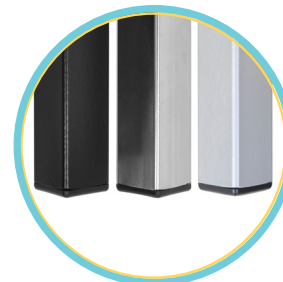
When ordering you must specify:

- 1) Complete model #
- 2) Table top finish and edge finish
- 3) Leg shape and finish

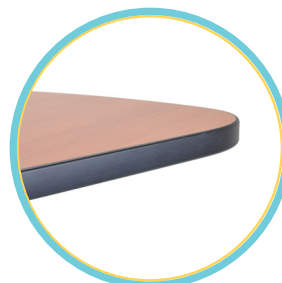
Then you may add additional option codes.



Round Leg



Square Leg



Contrasting Edge

## options & upgrades

Code	Description	List Price
<b><u>TABLE TOP FINISH</u></b>		
Standard Choices with matching 3mm edge: Black, Cafelle, Wild Cherry, Fonhill Pear, Designer White, Kensington Maple, Montana Walnut, or Empire Mahogany.		
SL	Wilsonart® laminate finishes ending with code 60 are available standard choices.	N/C
UL	Upgrade laminate choices, call for pricing.	N/C
CE	3mm contrasting Black edge.	CFP
UE	Upgrade 3mm contrasting edge. Any color other than black.	N/C
<b><u>LEGS - Set of 4</u></b>		
MLRB	Round Leg BLACK finish.	CFP
MLRC	Round Leg CHROME finish.	N/C
MLRSM	Round Leg SILVER METALLIC finish.	\$25
MLSB	Square Leg BLACK finish.	N/C
MLSC	Square Leg CHROME finish.	N/C
MLSSM	Square Leg SILVER METALLIC finish.	\$25
<b><u>GLIDES</u></b>		
AHG	Adjustable height glides.	N/C
AHGV	Adjustable height VCT Floor saver glides. Prevents damage to VCT tile. Not for use on carpet.	\$40
		\$60



# make space table SQUARE

- 18" • 24" • 30" • 36" • 42" Square Table Tops
- Available in 16" or 21" heights
- 1 ¼" High density laminate top with Standard Wilsonart®  
Table top finishes with soft matching 3mm edge:  
Black, Cafelle, Wild Cherry, Fonthill Pear, Designer White,  
Kensington Maple, Montana Walnut, or Empire Mahogany.
- 1½" round or square steel legs with black insert glides and  
welded connecting plates.
- Choose Black, Chrome, or Silver Metallic finish legs.
- CAUTION! Do not sit or stand on tables.



model #  
MT18S MLRB

## pricing

### Table Square 16" & 21" height

	Model #	Description	List Price	Freight
	MS18S	18" Square, 16" Height	462	UPS
	MT18S	18" Square, 21" Height	462	UPS
	MS24S	24" Square, 16" Height	466	UPS
	MT24S	24" Square, 21" Height	466	UPS
	MS30S	30" Square, 16" Height	628	UPS
	MT30S	30" Square, 21" Height	628	UPS
	MS36S	36" Square 16" Height	640	LTL
	MT36S	36" Square, 21" Height	640	LTL
	MS42S	42" Square, 16" Height	660	LTL
	MT42S	42" Square, 21" Height	660	LTL

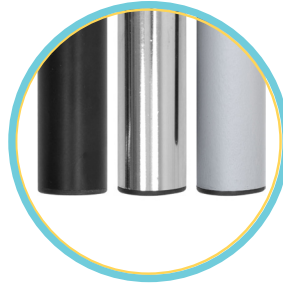


# make space table SQUARE

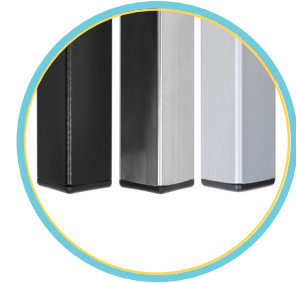
When ordering you must specify:

- 1) Complete model #
- 2) Table top finish and edge finish
- 3) Leg shape and finish

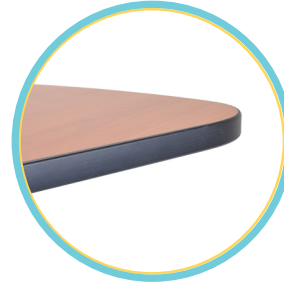
Then you may add additional option codes.



Round Leg



Square Leg



Contrasting Edge

## options & upgrades

Code	Description	List Price
<b>TABLE TOP FINISH</b>		
Standard Choices with matching 3mm edge: Black, Cafelle, Wild Cherry, Fonhill Pear, Designer White, Kensington Maple, Montana Walnut, or Empire Mahogany.		
SL	Wilsonart® laminate finishes ending with code 60 are available standard choices.	N/C
UL	Upgrade laminate choices, call for pricing.	N/C
UL	Upgrade laminate choices, call for pricing.	CFP
CE	3mm contrasting Black edge.	N/C
UE	Upgrade 3mm contrasting edge. Any color other than black.	CFP
<b>LEGS - Set of 4</b>		
MLRB	Round Leg BLACK finish.	N/C
MLRC	Round Leg CHROME finish.	\$25
MLRSM	Round Leg SILVER METALLIC finish.	N/C
MLSB	Square Leg BLACK finish.	N/C
MLSC	Square Leg CHROME finish.	\$25
MLSSM	Square Leg SILVER METALLIC finish.	N/C
<b>GLIDES</b>		
AHG	Adjustable height glides.	\$40
AHGV	Adjustable height VCT Floor saver glides. Prevents damage to VCT tile. Not for use on carpet.	\$60



# make space table COFFEE

- 23" wide x 46" long.
- Available in 16" or 21" heights
- 1 ¼" High density laminate top with Standard Wilsonart®  
Table top finishes with soft matching 3mm edge:  
Black, Cafelle, Wild Cherry, Fonthill Pear, Designer White,  
Kensington Maple, Montana Walnut, or Empire Mahogany.
- 1½" round or square steel legs with black insert glides and  
welded connecting plates.
- Choose Black, Chrome, or Silver Metallic finish legs.
- CAUTION! Do not sit or stand on tables.



model #  
MS23C MLRB

## pricing

### Coffee Table 16" & 21" height

	Model #	Description	List Price	Freight
	MS23C	23" x 46" Coffee, 16" Height	647	UPS
	MT23C	23" x 46" Coffee, 21" Height	647	UPS



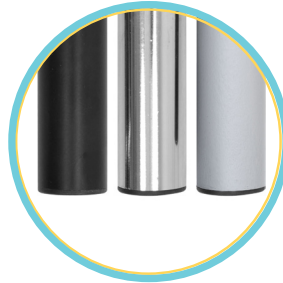


# make space table COFFEE

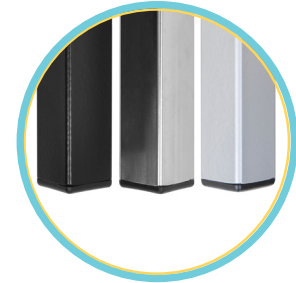
When ordering you must specify:

- 1) Complete model #
- 2) Table top finish and edge finish
- 3) Leg shape and finish

Then you may add additional option codes.



Round Leg



Square Leg



Contrasting Edge

## options & upgrades

Code	Description	List Price
<b><u>TABLE TOP FINISH</u></b>		
Standard Choices with matching 3mm edge: Black, Cafelle, Wild Cherry, Fonhill Pear, Designer White, Kensington Maple, Montana Walnut, or Empire Mahogany.		
SL	Wilsonart® laminate finishes ending with code 60 are available standard choices.	N/C
UL	Upgrade laminate choices, call for pricing.	N/C
CE	3mm contrasting Black edge.	CFP
UE	Upgrade 3mm contrasting edge. Any color other than black.	N/C
<b><u>LEGS - Set of 4</u></b>		
MLRB	Round Leg BLACK finish.	CFP
MLRC	Round Leg CHROME finish.	N/C
MLRSM	Round Leg SILVER METALLIC finish.	\$25
MLSB	Square Leg BLACK finish.	N/C
MLSC	Square Leg CHROME finish.	N/C
MLSSM	Square Leg SILVER METALLIC finish.	\$25
<b><u>GLIDES</u></b>		
AHG	Adjustable height glides.	N/C
AHGV	Adjustable height VCT Floor saver glides. Prevents damage to VCT tile. Not for use on carpet.	\$40
		\$60



# MAKE SPACE COLLECTION STATEMENT OF LINE

---

## dock bench

(LEGS: ROUND OR SQUARE, BLACK, CHROME, OR SILVER METALLIC. MINI 15" HEIGHT AVAILABLE)



DB2418



DB4818



DB6018



DB7218

---

## dock square & dock quarter round

(LEGS: ROUND OR SQUARE, BLACK, CHROME, OR SILVER METALLIC. MINI 15" HEIGHT AVAILABLE)



DB1818



DB2424



DB3030



DBQR

---

## go2 swivel & go2 stool

(AVAILABLE SILVER METALLIC ARM)



GO2B



GO2C



GO22B



GO22C

---

## hover round & hover square

(MINI 15" HEIGHT AVAILABLE)



HP18R



HP24R



HP30R



HP18S



HP24S



HP30S

# MAKE SPACE COLLECTION STATEMENT OF LINE

## kudl swivel & kudl stool



KO E20/E21



KF E20/E21



KO E20S



KF E20S

## kudl 4-leg

(4-LEG METAL FRAME AVAILABLE WITH BLACK, CHROME, OR SILVER METALLIC LEGS)



KO4W



KF4W



KO4T



KF4T



KO4B/C/SM



KF4B/C/SM

## tables: round, square, or coffee

(LEGS: ROUND OR SQUARE, BLACK, CHROME, OR SILVER METALLIC, 16" OR 21" HEIGHT)



MS18S



MS24S



MS30S



MS36S



MS42S



MS18R



MS24R



MS30R



MS36R



MS42R



MS23C



**WE ARE BLENDING QUALITY CRAFTMANSHIP  
AND MANUFACTURING EXPERTISE TO BUILD  
SEATING SOLUTIONS THAT SATISFY UNIQUE  
CLIENT SPECIFICATIONS.**

**Dock**

Dock's versatile seating  
units create unique  
collaborative spaces

**Go2**

Adaptable work seating  
units are versatile  
portable and durable

**Hover**

Versatile portable seating  
units with concealed casters

**Kudl**

Generously proportioned  
full line of attractive seating



**seating inc.**

**MAKING. WORK. BETTER. BUILDING BETTER SEATING**

PO Box 898 | 60 N. State Street | Nunda, New York 14517 | 800.468.2475 | F 585.468.2804 | [sales@seatinginc.com](mailto:sales@seatinginc.com) | [www.seatinginc.com](http://www.seatinginc.com)