

**YOU TAKE CARE OF THEM.  
WE TAKE CARE  
OF YOU.**

---



**Fire**  **Dex**<sup>®</sup>

**MASTER CATALOG**



# CHANGE THE WAY YOU THINK ABOUT **YOUR PPE.**

The Interceptor Package combines three products to combat the elements and keep you safe.

TECGEN51 Fatigues, dual-certified to handle the toughest non-fire calls while mitigating the use of potentially-contaminated structure gear.

H41 Interceptor particulate blocking hood, designed to block potentially carcinogenic particulates

FXR Turnouts, built with Active Posture Design™ to help reduce overexertion





# THE INTERCEPTOR PACKAGE



**TECGEN51 FATIGUES**  
**PAGE 5**



**H41 INTERCEPTOR**  
**PAGE 6 - 7**



**FXR TURNOUTS**  
**PAGE 8**





**TECGEN** 71

# EXCLUSIVE OUTER SHELL

Our exclusive outer shell is designed to lessen heat stress  
by reducing weight and increasing flexibility.

Certified to NFPA 1971



**SUPERIOR FIBER  
LIGHTEST WEIGHT SYSTEMS  
HIGHEST THL**

## TURNOUTS WITH TECGEN71 VS. TRADITIONAL TURNOUTS



**20%**  
LIGHTER



**45%**  
THINNER



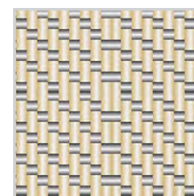
**70%**  
MORE FLEXIBLE



**50%**  
HIGHER THL

**WITHOUT SACRIFICING TPP**

## RIP TWILL CONSTRUCTION



FACE  
60% Kevlar®/  
40% Nomex®



BACK  
TECGEN fiber





TECGEN 51

# FIREFIGHTER FATIGUES

This dual-certified garment is designed to reduce heat stress and exposure to harmful carcinogens. With high levels of thermal protection and incredible breathability, TECGEN51 Fatigues make a comfortable fit for every department's needs.

Certified to NFPA 1951 and 1977

- Wearing structural gear on non-fire emergencies can cause unnecessary stress on your body and contribute to repeated exposure to contaminants
- Wear TECGEN51 Fatigues as your daily PPE to minimize exposure to carcinogens
- Our lightweight, single-layer garment is the perfect fit for 90% of your calls

## THE PERFECT FIT FOR:

EXTRICATION  
SEARCH AND RESCUE  
CONFINED SPACE SUPPORT PERSONNEL  
JUNIOR FIREFIGHTING / EXPLORER PROGRAMS  
WILDLAND, GRASS AND BRUSH FIRES  
HIGH / LOW ANGLE RESCUE  
TRENCH RESCUE  
GOODWILL CALLS  
MVA

- Two Models: Levels 1 and 3
- Two-Piece or Coverall
- Tan, Black, or Navy





# H41 INTERCEPTOR HOODS

## CHOOSE YOUR PROTECTION.

H41 Interceptor particulate blocking hoods reduce firefighters' exposure to persistent fireground carcinogens and other contaminants. Choose between two barrier options: Dupont™ Nomex® Nano Flex or Stedair® PREVENT.

Certified to NFPA 1971

## IS YOUR HOOD PROVIDING THE PROTECTION YOU NEED?

Choose the H41 Interceptor to reduce the absorption of carcinogens in the highly-permeable skin around the face and neck.







## BUILT WITH DUPONT™ NOMEX® NANO FLEX

- 3-layer particulate blocking hood featuring an inner layer of DuPont™ Nomex® Nano Flex sewn between two layers of 6.0oz PBI®/Lenzing (20%/80%)
- Superior breathability and elasticity



**OFFERS PBI® PROTECTION FOR MAXIMUM PERFORMANCE**



## BUILT WITH STEDAIR® PREVENT

- 2-layer particulate blocking hood featuring an inner layer of Stedair® PREVENT and an outer layer of 8.0oz Nomex® (100%)
- Built for durability

**MAINTAINS 99.9% FILTRATION EFFICIENCY AFTER 100 WASH/DRY CYCLES**

**UNMATCHED BREATHABILITY COMPARED TO MOISTURE BARRIER TECHNOLOGY**



# FXR CUSTOM TURNOUTS

FXR turnouts are specifically designed to minimize firefighter stress and fatigue through Active Posture Design™, allowing for full range of motion - especially while wearing your SCBA!

Certified to NFPA 1971



## SEAMLESS COLLAR

Comfort and NFPA compliant protection without the need for a throat tab



## OMNIDEX™ SHOULDER

Eliminates coat rise and sleeve retraction by moving the shoulder seam to the natural bending point, allowing for optimal SCBA positioning



## DEXFLEX™ KNEES AND ELBOWS

Move freely and reduce resistance with naturally-bent knees and elbows



## ATHLETIC PANT DESIGN

Provides natural movement and comfort in a forward firefighting position



AVAILABLE IN A VARIETY OF MATERIALS  
INCLUDING PROXIMITY.



# I2H INTEGRATED HARNESS PANT

ONLY AVAILABLE IN FXR TURNOUTS

EXTERNAL WAISTBELT  
FOR EASY ADJUSTMENT

POSITIVE CLOSURE  
ONE-STEP EASY DONNING



INTERNAL CLASS II  
HARNESS REDUCES  
SNAG RISK

SIDE-OPENING  
HARNESS AND  
ANGLED FLY

NO HARDWARE INSIDE PANT TO REDUCE  
POTENTIAL FOR MATERIAL ABRASION

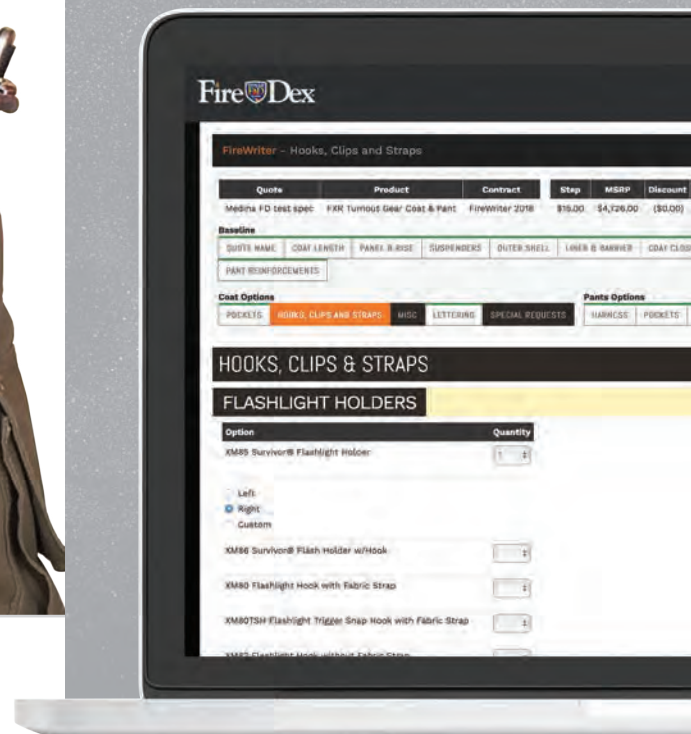
## WHAT IS FIREWRITER2?

Personally design and customize your gear to best suit your needs.

Build custom turnouts, proximity, EMS, USAR and TECGEN51 Fatigues.

Create a free account today at [Firewriter.firedex.com](http://Firewriter.firedex.com).

**Fire**  **Writer<sup>2</sup>**





# FXM CUSTOM TURNOUTS

Traditional, proven performance characteristics paired with the latest in comfort features in a modern style turnout.

Certified to NFPA 1971



## DEXFLEX™ KNEES AND ELBOWS

Move freely and reduce resistance with naturally-bent knees and elbows



## MODERN TAPERED HEM

Coverage where you need it featuring a shorter front and longer back



## MAXIMUM COMFORT

Full range of motion and increased flexibility and durability with a seamless crotch gusset



## DEXFLEX™ REVERSE TAPERED CUFF

Minimizes wear and tear from cuff dragging



# FXC ECONOMICAL TURNOUTS

FXC Turnouts are an excellent option for budget conscious departments.

Available in two models: standard and deluxe

Certified to NFPA 1971



**DELUXE**



**STANDARD**

**NEED TO FIND A  
LOCAL DISTRIBUTOR?**

**VISIT [FIREDEX.COM/DISTRIBUTORS](https://firedex.com/distributors)**



# EMS

---

EMS gear offers a comfortable fit with a construction that is waterproof, breathable and bloodborne pathogen-resistant to protect you from line-of-duty hazards.

Certified to NFPA 1999



# USAR

---

Lightweight, breathable protection for technical rescue, emergency medical, and other non-fire incident calls where rugged durability and bloodborne pathogen protection are needed.

Certified to NFPA 1999 and 1951



AVAILABLE WITH TECGEN51 FABRIC | [FIREDEX.COM/TECGEN51FABRIC](https://firedex.com/tecgen51fabric)



# WILDLAND

This traditional design is an economical solution for departments in need of single-layer, lightweight, FR protective apparel.

Available in two-piece or coverall.

Certified to NFPA 1977



## DO YOU KNOW...

When your gear needs inspected?

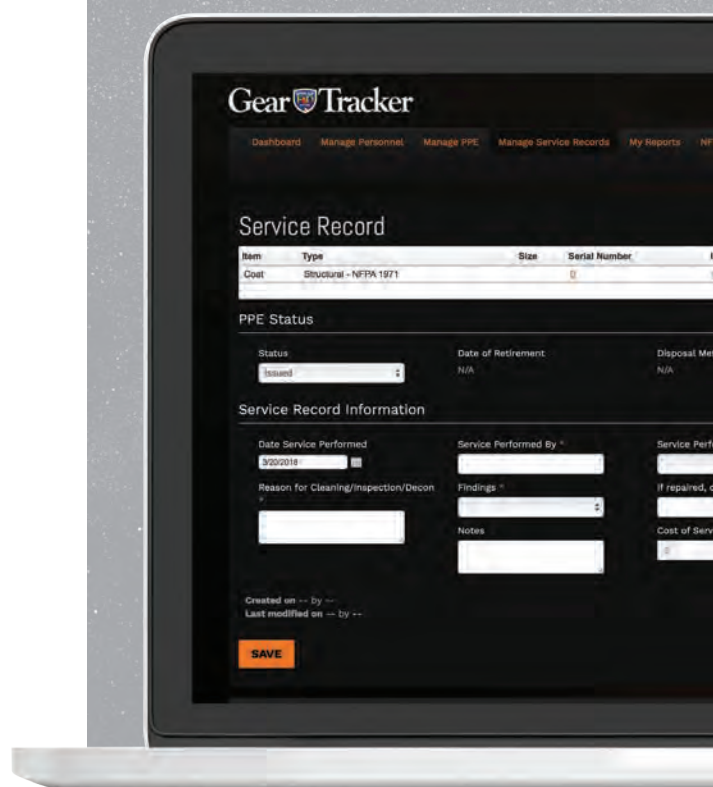
What gear is at each station?

When your gear expires?

Try using GearTracker to keep your records up to date

[Geartracker.firedex.com](http://Geartracker.firedex.com).

Gear  Tracker





# FDXL200 LEATHER BOOT

Get more flex out of a boot built to keep you energized and moving comfortably throughout your longest work days.

Certified to NFPA 1971 & 1992

## EASY DON AND DOFF

Quickly don with wide integrated pull handles, reinforced with an extra layer of leather for longevity. A finished edge also helps resist against skin abrasion.

## ADDED VISIBILITY

Be seen in low-light conditions with bright reflective 3M™ Scotchlite™ trim.

## QUALITY LEATHER

Feel extra comfort & protection with shin cushioning & Flame Stop leather - made from the finest U.S. steer.

## FLEX AND MOBILITY

Climb and crawl with greater mobility. Additional flex points at the ankle eliminate pitch points and allow for a larger range of motion.

## LONG-LASTING SUPPORT

Stay energized during long hours with a naturally-shaped, shock absorbant sole that features toe & heel springs to reduce impact zones.





## HAZARDOUS LIQUID RESISTANCE

Arrive on scene with confidence knowing the FDXL200 is lined with GORE® CROSSTECH®'s military footwear barrier system and certified to NFPA 1992 to protect against liquid, bacterial & chemical hazards.

## EXTREME DURABILITY

Resist tearing with Nomex® and Kevlar® lining.

## SEAMLESS INTEGRATION

Reduce exposure to fireground contaminants by limiting ride-up and maintaining a seal with any leg dam, including those containing particulate barriers.

## REINFORCED KICKPLATE

Easily remove boots and reduce the spread of contamination by using the reinforced kick plates.

## CIRCULATION AND BREATHABILITY

Wick moisture, increase air movement and eliminate odors with a multi-density footbed.

## TRACTION AND STABILITY

Maintain balance with steel ladder shanks.

## IMPACT, COMPRESSION AND PUNCTURE RESISTANCE

Stay light on your toes and avoid injury with a non-conductive composite toe cap which is NFPA, CSA, ANSI compliant.

## COMBAT EXTREME TEMPERATURES

Conquer extreme heat and embrace the bitter cold with superior traction from the Vibram FIRE & ICE sole.



**THIS BOOT IS PROUDLY MANUFACTURED WITH THE FOLLOWING MATERIALS:**



**Scotchlite™**  
Reflective Material



**GORE®**  
**CROSSTECH®**  
PRODUCTS

**DUPONT®**

**Kevlar® | Nomex®**



# FDXR100 RUBBER BOOT

The Fire-Dex Rubber boot is a classic staple to firefighting PPE. Waterproof, with thermal insulation and steel protection make this an ideal, economical choice for protective footwear.

Certified to NFPA 1971

## PROTECTION AND COMFORT

Added support with a Rubber Shin Guard for comfort on ladders and when crawling

## EASY DON AND DOFF

Extend the life of the boot with integrated pull-on loops

## LONGEVITY

Reinforced heel and toe cap help maintain the structure of the boot over time

## ADDED VISIBILITY

## TRACTION AND STABILITY

Maintain balance and increase traction with the diamond plate-textured mid-sole





# DEX-PRO GLOVE

3D, innovative design built with three layers, just like your turnout gear! Materials include 3oz Cowhide outer protection, a military-grade DuPont™ Nomex® thermal liner, and a Porelle® FR moisture barrier.

Certified to NFPA 1971

## MAXIMUM DEXTERITY

Broken-in feel out of the bag with 3oz Top Grain Cowhide

## THERMAL RESISTANCE

Added thermal protection against conductive heat with reinforced Cowhide Knuckle and Palm Guards

## DEXFLEX™ FINGERS

Reduce restriction with naturally-bent fingers

## ROLLOVER FINGERTIPS

Tactical grip design with seamless fingertips

## MAXIMUM FLEXIBILITY

360 degree range of motion with a keystone thumb design

## SUPERIOR PROTECTION

60+ TPP and two layers of thermal lining that extend down the fingers

## ABRASION RESISTANCE

Highly flexible and naturally water resistant goatskin forchettes



Available with gauntlet cuff or knit wrist in sizes XS-2X



# CLASSIC KNIT FIRE HOODS

Classic hoods feature flat lock seams and TrueFit elastic face openings to accommodate all SCBA masks.

Four model options available in multiple combinations of knit materials.

Certified to NFPA 1971

H37



H71



H81



H61



Reduce your exposure to carcinogens  
with a particulate barrier hood  
**SEE PAGE 6**



# STRUCTURAL FIREFIGHTING HELMETS

Available in two models, all Fire-Dex helmets are made with a fiberglass compression-molded shell for superior flame and heat resistance, thermal impact cap, ratchet adjustment and an adjustable headband to fit all SCBAs.

Available in black, yellow, red, or white.

Certified to NFPA 1971

## MODERN

Available with a visor (4" or 6") or goggles



## TRADITIONAL

Available with a 4" visor, bourkes (flip-downs) with goggles, or goggles only





OUR MISSION:

# TO SERVE THOSE WHO SERVE



780 South Progress Drive  
Medina, Ohio 44256

Phone: (330) 723-0000  
Fax: (330) 723-0035

Email: [info@firedex.com](mailto:info@firedex.com)  
[firedex.com](http://firedex.com)

## OUR PARTNERS:



**Scotchlite™**  
Reflective Material

«DUPONT»

**Kevlar® | Nomex®**



**GORE®**  
**CROSSTECH®**  
PRODUCTS



Fire-Dex® DexFlex™, OmniFlex™, H41 Interceptor® and Interceptor Package™ are trademarks or registered trademarks of Fire Dex, LLC. CROSSTECH® and Gore™ are trademarks or registered trademarks of W.L. Gore. NOMEX® and KEVLAR® are registered trademarks of El DuPont Nemours and company or its affiliates. PBI® is a registered trademark of PBI Performance Products. 3M™ and Scotchlite™ are trademarks of 3M. Stedair® is a registered trademark of Stedfast, Inc. Vibram is a registered trademark of Vibram S.P.A.