

FABRICS | FINISHES



Paint: White



Paint: Platinum



Laminate: Pinnacle



Fabric: Appoint
Mandarin



Privacy Screens:
Frosted Glass



Maxon Furniture Inc.

With over 40 years experience, Maxon Furniture Inc. is recognized as an organization of the highest efficiency in the contract furniture industry, providing clients with outstanding quality and performance. Maxon offers a full range of workstations and freestanding desking, along with personalized space planning and support to achieve the right solution at the right price. Headquartered in Muscatine, Iowa, Maxon is an operating company of HNI Corporation, the world's second-largest office furniture manufacturer.

For more information
Visit www.maxonfurniture.com | Call 800.876.4274 | Email Service@maxonmail.com



SURPASS® has achieved BIFMA level 2 and
SCS Indoor Advantage Gold Certifications.



Form #SRPS (10/16)
©2016 Maxon Furniture Inc.
Specifications subject to change without notice

SURPASS®
Desking System



Power to the office.

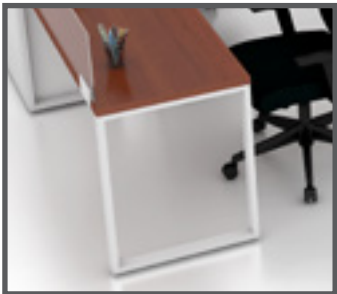
SURPASS® is designed for uncomplicated functionality. Electrical can be routed within its support structure, allowing you to manage cords and keep your space clutter free and organized. Small, discreet power modules mounted within easy reach under the worksurface, let your team plug in and power up.



See the Maxon Pinterest page for inspiration
<http://pinterest.com/MaxonFurniture>



INCLUDE® credenzas maximize storage and seating while supporting an open plan environment.



The O Leg support allows for open and inviting aesthetic within the workplace.



INCLUDE® towers ensure the perfect solution for every storage need.



Glass or fabric screens provide privacy while still optimizing a collaborative setting.

At the Speed of Knowledge.

SURPASS® benching incorporates an open design. Glass and fabric screens define space as well as supporting visual privacy and productivity. SURPASS® delivers an environment for collaboration with a flair for the aesthetic. Designed to be flexible for any need and always on budget.

Fabric and finish selections for the above image are White paint, Mocha laminate and Appoint Lawn fabric. The opposite page features White paint, Cognac laminate, Appoint Jet on the upholstery and Sarto Reef represents the tackboard fabric.

Blend for the perfect mix.

Blend SURPASS® with Maxon panel products to perfect your space. By design, SURPASS® is flexible in configuration and works well in function with PREFIX® and EMERGE™. Blending products allows you to best manage your space and budget.



View it Live

Bring this unique blended design to life.
<http://vimeo.com/MaxonFurniture/MaxonSURPASS>

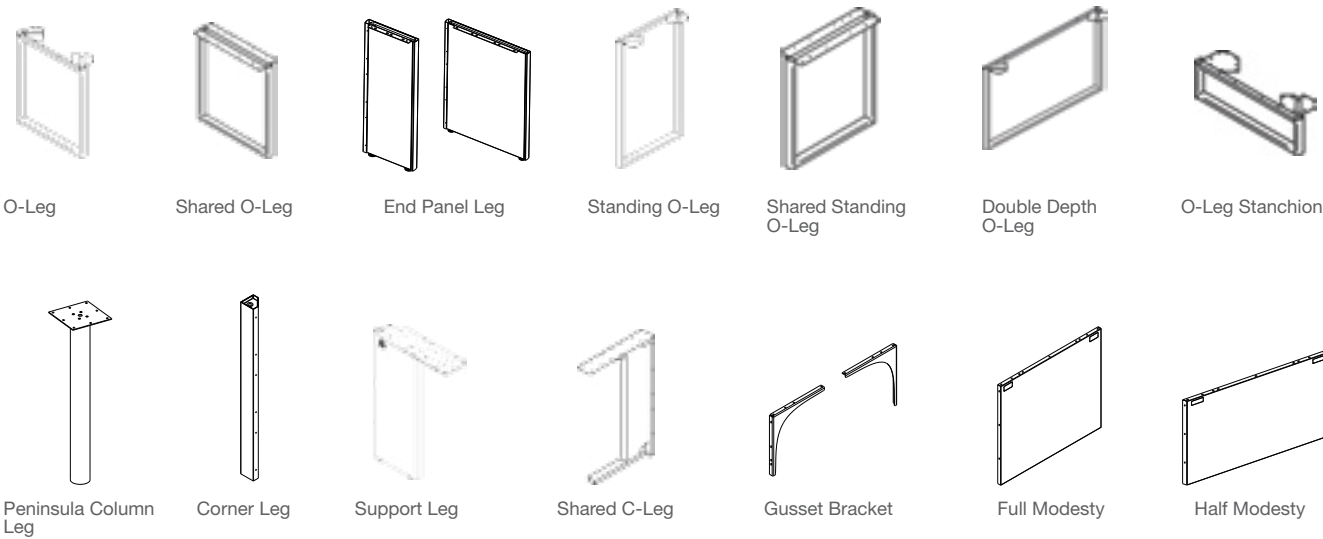


Practicality, meet Prestige.

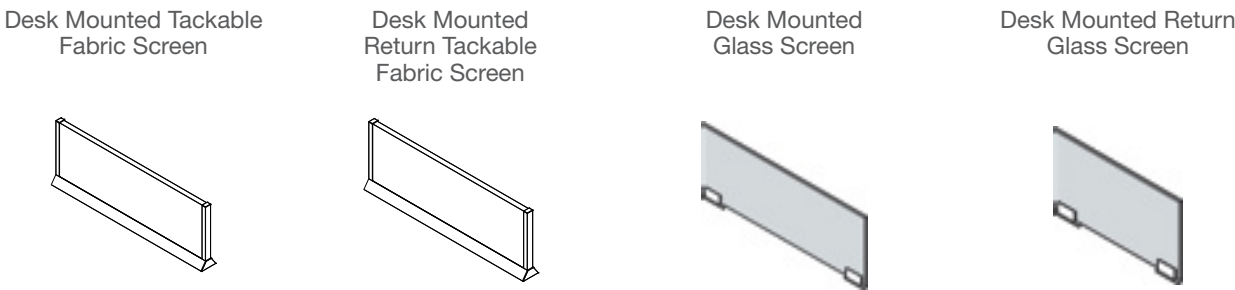
SURPASS® desking supports focused collaboration in a private office setting. Choose your worksurface shape, along with a robust selection of finishes and storage combinations. All working effortlessly together allowing you to succeed in your space. SURPASS® is the solution for your needs in functionality, aesthetic and budget.

The above page features Flint paint, Harvest laminate and Tempest Goldrush represents the tackboard. Fabric and finish selections for the opposite page are Loft paint, Frosty White laminate, upholstery is Appoint Mandarin, fabric tiles are Appoint Jet and Refuge Mineral with Frosted Glass privacy screens.

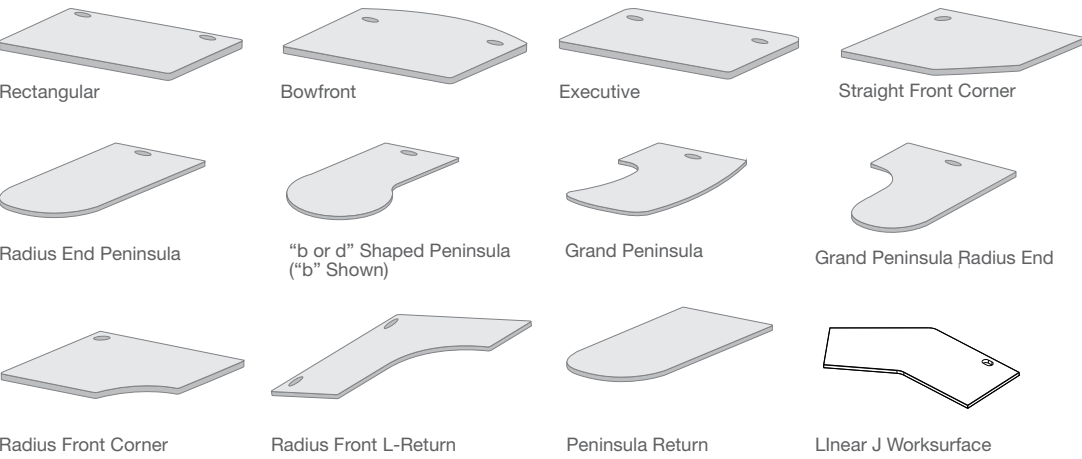
Supports



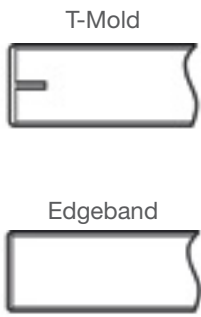
Privacy Screens



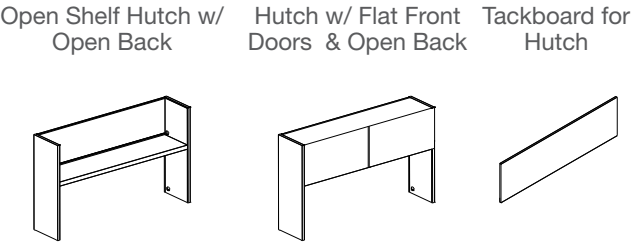
Worksurfaces



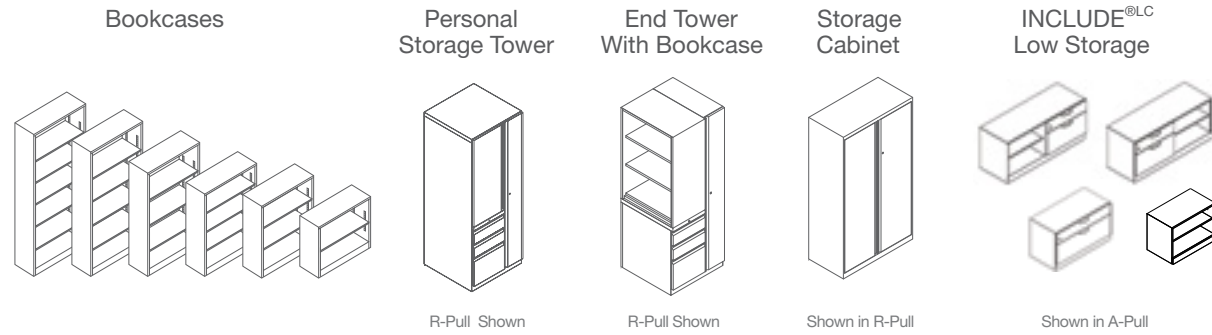
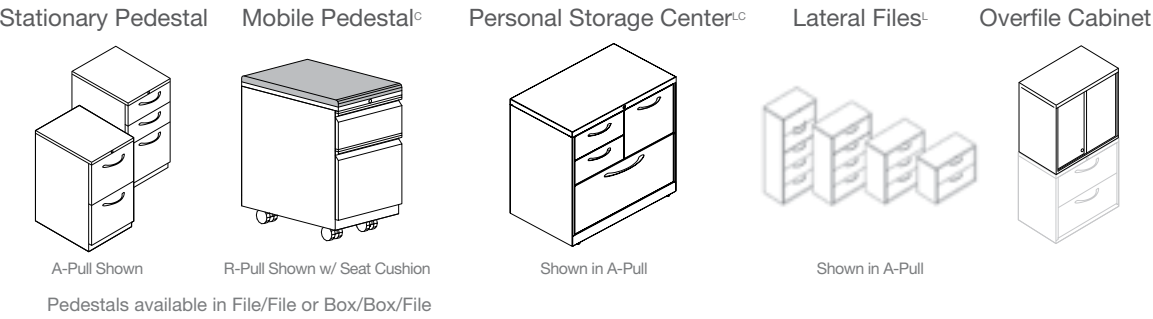
Edge Options



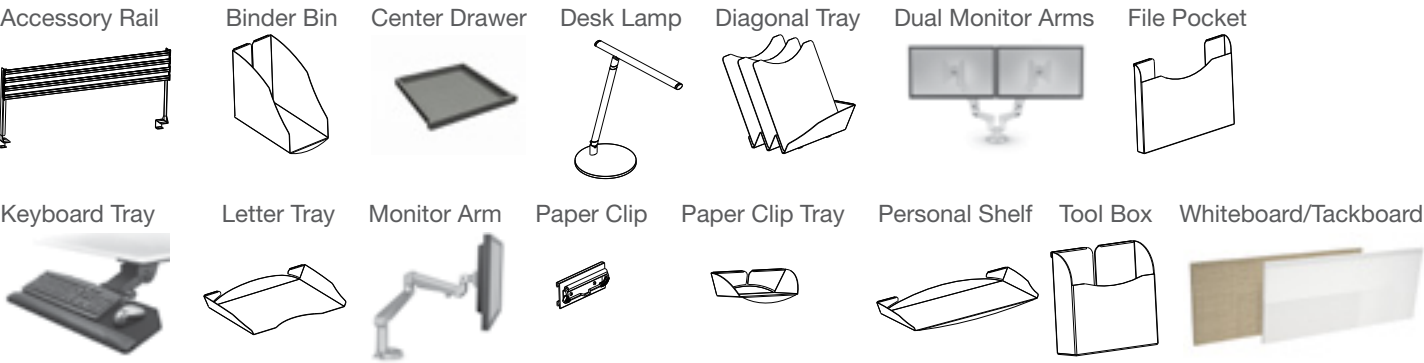
Overhead Storage



Filing & Personal Storage



Accessories



More Accessories available. See your Maxon Pricebook for all options and more information.

Northport™



Air moves around you. Chair moves with you.

The Northport series combines high tech styling, adjustable controls, and long-lasting comfort. Personalize your chair with features such as adjustable arm height, seat glide, back tilt, or lumbar support encouraging good posture. Create a professional presence with flare in any office environment.



M-SENP108

Dimensions:

22 ¼"W x 24"D x 35 ¼"H

A

- Fixed arms for additional body support.
- Breathable mesh back for added comfort.
- Up to four high on the floor stackability.



M-SENP101

Dimensions:

26"W x 26"D x 40 ½"H

A, D, F, H, J, K

- Fixed arms for additional body support.
- Breathable mesh back for added comfort.
- Tilt tension easily controls various recline preferences.
- Tilt lock places the back in an upright position allowing firm back support.



M-SENP105

Dimensions:

26"W x 26"D x 52"H

A, D, H

- Fixed arms for additional body support.
- Breathable mesh back for added comfort.
- Task stool for easier sit-to-stand movement.

Comfort Controls



A. Fixed Arm Height



B. Adjustable Height Arms



C. Adjustable Height and Width Arms



D. 360° Swivel



E. Adjustable Lumbar Support



F. Tilt



G. Synchro-Tilt



H. Pneumatic Seat Height Adjustment



I. Seat Glide



J. Tilt Tension



K. Tilt Lock



M-SENP201

Dimensions:

28 3/8"W x 28 3/8"D x 43 1/8"H

B, D, E, F, H, J, K

- Adjustable lumbar for maximum lower back support.
- Breathable mesh back for added comfort.
- Height-adjustable arms.
- Tilt tension easily controls various recline preferences.
- Tilt lock places the back in an upright position allowing firm back support.



M-SENP252

Dimensions:

26 1/2"W x 26 3/4"D x 42 1/2"H

C, D, E, G, H, I, J, K

- Adjustable lumbar for maximum lower back support.
- Breathable mesh back for added comfort.
- Height-adjustable arms.
- Tilt tension easily controls various recline preferences.
- Tilt lock places the back in an upright position allowing firm back support.
- Adjustable seat glide.



M-SENP452

Dimensions:

26 1/2"W x 26 3/4"D x 42 1/2"H

C, D, E, G, H, I, J, K

- Adjustable lumbar for maximum lower back support.
- Breathable mesh back for added comfort.
- Height-adjustable arms.
- Tilt tension easily controls various recline preferences.
- Tilt lock places the back in an upright position allowing firm back support.
- Adjustable seat glide.
- Chrome accents for a professional presence.



Maxon Furniture Inc.

With over 40 years experience, Maxon Furniture Inc. is recognized as an organization of the highest efficiency in the contract furniture industry, providing clients with outstanding quality and performance. Maxon offers a full range of workstations and freestanding desking, along with personalized space planning and support to achieve the right solution at the right price. Headquartered in Muscatine, Iowa, Maxon is an operating company of HNI Corporation, the world's second-largest office furniture manufacturer.

For more information

Visit www.maxonfurniture.com | Call 800.876.4274 | Email Service@maxonmail.com



Form #NRPT (11/16)

©2016 Maxon Furniture Inc.

Specifications subject to change without notice

PREPARE™

Tasking and Teaming Tables



PREPARE for Any Space

PREPARE helps you create environments that allow employees to work in a variety of settings with uninterrupted power and data accessibility, all at an affordable price.



Maxon's PREPARE teaming tables complement our workstation offerings by providing a solution to meet the collaborative needs of today's office environment.



Whether you choose to sit or stand, variable height worksurfaces support the demands of your schedule.



Conference tables that fit well and work within your environment.



Mobile tables can be used individually, or in groups, to accommodate your changing meeting needs.



FABRICS | FINISHES



Leg/ Stanchion:
White



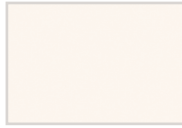
Panel/ Storage:
Flint paint



Fabric Tiles:
Appoint | Turmeric



Laminate Tiles:
Beigewood



Worksurface:
Frosty White



Maxon Furniture Inc.

With over 30 years experience, Maxon Furniture Inc. is recognized as an organization of the highest efficiency in the contract furniture industry, providing clients with outstanding quality and performance. Maxon offers a full range of workstations and freestanding desking, along with personalized space planning and support to achieve the right solution at the right price. Headquartered in Muscatine, Iowa, Maxon is an operating company of HNI Corporation, the world's second-largest office furniture manufacturer.

For more information
Visit www.maxonfurniture.com | Call 800.876.4274 | Email Service@maxonmail.com



Form #PPR (12/15)
©2016 Maxon Furniture Inc.
Specifications subject to change without notice