

MOWERMAXTM

Boom Mower



**MADE IN
FLORIDA**

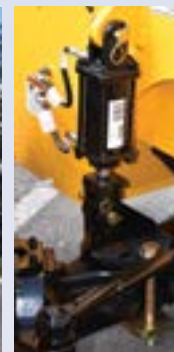
ENGINEERED FOR PERFORMANCE

The revolutionary, **3rd Generation MowerMax Boom Mower** is designed and purpose built from the ground up to have the best **Stability, Visibility, Maneuverability and Versatility** of any boom mower on the market. The MowerMax is a heavy-duty boom mower that is also very safe, easy to operate and maintain.



OPTIMUM STABILITY

The MowerMax is designed to have a low center of gravity. The counterweights are mounted directly opposite the boom for maximum benefit and it's easy to add additional counterweights. These features combined with the rear axle stabilizer system, make the MowerMax an extraordinarily stable machine.



INCOMPARABLE VISIBILITY

The MowerMax cab forward design greatly enhances the operator's visibility making for a much more productive and safer cutting experience. Plus the right side of the cab has an unobstructed view.



EXTREMELY SIMPLE & COMFORTABLE

The MowerMax is extremely simple to operate and very comfortable for the operator! The MowerMax is easy to get into and out of with non slip coated steps integrated into the main counter-weight. The cab has a plush, Grammer air-ride suspension seat with tilt and lumbar, a tilt & telescoping steering wheel with steering knob, 6.2in color AM/FM/CD stereo with Bluetooth & optional Backup Camera, and a 7in Control Display.



OUTSTANDING MANEUVERABILITY

The MowerMax has hydrostatic, 2 speed transmission which is operated by two foot pedals and comes with permanent 4 wheel drive with 45% limited slip front axle and 100% operator controlled rear differential lock. The MowerMax Boom also has 4 wheel steering with 3 different steering modes: **1) 4 Wheel Steer 2) Front Wheel Steer or 3) Crab Steer.** These three steering modes allows the MowerMax to be extremely maneuverable and productive. Lastly all of MowerMax booms come with 180 degree rotation with a helical actuator for maximum operating flexibility.



4-WHEEL



FRONT



CRAB

SERIOUS VERSATILITY

The MowerMax Boom is extremely versatile with 4 different boom head attachments as well as the optional front lift arms with universal quick attach mounts that allows you to use over 30 common skid steer attachments.



60in Rotary Deck



50in HD Flail



90in Quad Saw



50in Fecon Mulcher



Universal Quick Attach



84in Broom



96in Front Rotary Deck

EXCEPTIONALLY SAFE

ATMAX Equipment knows that boom mowing often happens on busy roads under rough conditions, so safety of the operator and the machine are of utmost importance! **1/2in Lexan Glass** on boom side. **ROPS & FOPS** - Most tractors and other purpose built boom mowers only have ROPS even though all trim trees with them! **Bright Yellow Powder Coated Paint** with 2 front LED daytime running lights, 2 reflective SMV diamonds, 2 - SAE Class 1 strobes, 1 - 35in LED directional control bar, 12 amber/white mini LED flashers, and over 30ft of reflective decals and DOT tape.



MOWERMAX BOOM MOWER SPECIFICATIONS

Power Unit Specs

Engine	Cummins F 3.8QSF 154 HP Stage V Turbo Diesel
Cooling System (Engine & Hydraulic)	Horizontally-mounted Radiator/CAC/Oil Cooler with High Flow Fan & Reversing Cleanout System
Transmission	Two Speed Closed Loop Hydrostatic with Double Foot Pedal Controls, Optional 4 Speed Transmission with 220% more torque
Drive Train & Steering	Permanent 4-Wheel Drive with 4-Wheel Steering and 3 Steering Modes
Differential Lock	45% Limited Slip on Front Axle and 100% Operator-controlled Rear Locking Rear Axle
Parking Brake	Standard SAHR Electric over Hydraulic
Service Brake	Standard Foot Pedal Controlled
Tires	460/70-R24 Radial with Multiuse Tread or 550/45-22.5 22 Ply Flotation with Lug Tread
Ground Speed	0-8 MPH Work Mode 0-25 MPH Travel Mode

Boom Arm Specifications

Boom Controls	Multifunction, Electric Over Hydraulic Joystick
Boom Lengths	Approximately 22ft, 24ft, 26ft & Telescoping 27ft to 30ft
Boom Rotation	180 Degrees with Helical Actuator with Cross Port Relief
High Flow Hydraulics to Boom Attachments	Closed Loop Hydrostatic Pump with 30GPM @ 5000psi
Available Boom Attachments:	
Rotary Decks	50in & 60in with Hydraulic Door & Optional 90 Degree Swivel
Mulching Head	50in Fixed Tooth Mulching mfg for MowerMax by Fecon with optional 180 Degree Swivel
Saw Heads	48in Single Blade Direct Drive, 69in Triple Blade Belt Drive & 90in Quad Blade Belt Drive
Flail Heads	50in Brush Flail & 60in Grass Flail with optional 180 Degree Swivel
Ditch Maintainer	22in Cutting Width with Hydraulically Controlled Debris Shute
Log/Debris Grapple	55in Wide (open) Grapple with 360 Degree Rotation

Front Lift Arm Specs (Optional)

Attachment Types	Most Universal Skid Steer Mount Attachments
Lift Capacity	2500lbs
High Flow Hydraulics to Attachments	Closed Loop Hydrostatic Pump with 30GPM @ 5000psi

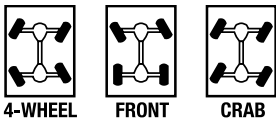
General Specs

Width with Boom in Stow	100in
Length with Boom in Stow (no boom attachments)	236in
Height	112in
Weight (with 24ft boom & no attachments)	19,500lbs approximately
Diesel Fuel Tank Capacity	48 Gallon Aluminum Tank with Locking Fuel Cap
DEF Tank Capacity	5 Gallons

Cab & Safety Features

Grammer Air Ride Suspension Seat with Back Rest, Lumbar, Tilt with Operator Presence Switch & Seatbelt with Switch
Tilt Steering Column with Telescoping Steering Wheel with Knob
Easy to View, Adjustable 7in Color Display with All Gauges and Warning Signals
6.2in Color AM/FM/CD Stereo with Bluetooth and Optional Backup Camera
Front Hedlights with LED Daytime Running Lights and Rear LED Brake Turn and Backup Lights
12 Amber/White LED Mini Flashers on all 4 Sides
1 - Cab Mounted, Amber LED Bar and 1 - LED Directional Control Bar on Rear on Cab
Backup Alarm
2 Reflective SMV Diamonds and over 28ft of Reflective DOT tape
Certified ROPS - ISO 3471 & FOPS - ISO 3449

STEERING MODES



6902 East 7th Avenue • Tampa, FL 33619

Sales: 813-634-1111

WWW.MOWERMAX.COM



Call to schedule a demonstration:

DAVID: 813-781-0100
(FL, TX, LA, VA, WV, MO)

NEAL: 423-595-4897
(AL, AR, GA, TN, SC, NC)

PATRICK: 614-306-6887
(OH, IN, KY, IL, MI, PA)