

Lockers

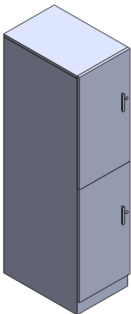
Price & Product Guide



Lockers



FCLSD
Single Locker



FCLDD
Double Locker

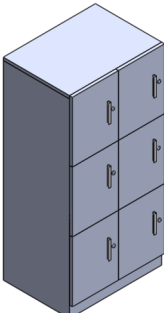


FCLQD
Quad Locker

Cubby Lockers

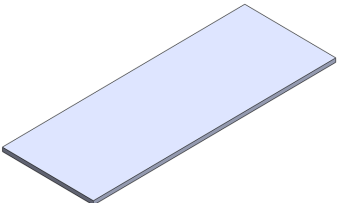


FCLCS
Single Width Cubby
Locker

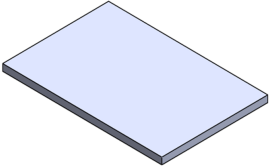


FCLCD
Double Width Cubby
Locker

Surfaces

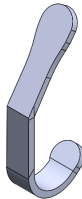


FCLWS
Common Top

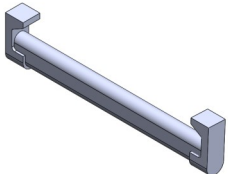


FCLAS
Additional Shelf

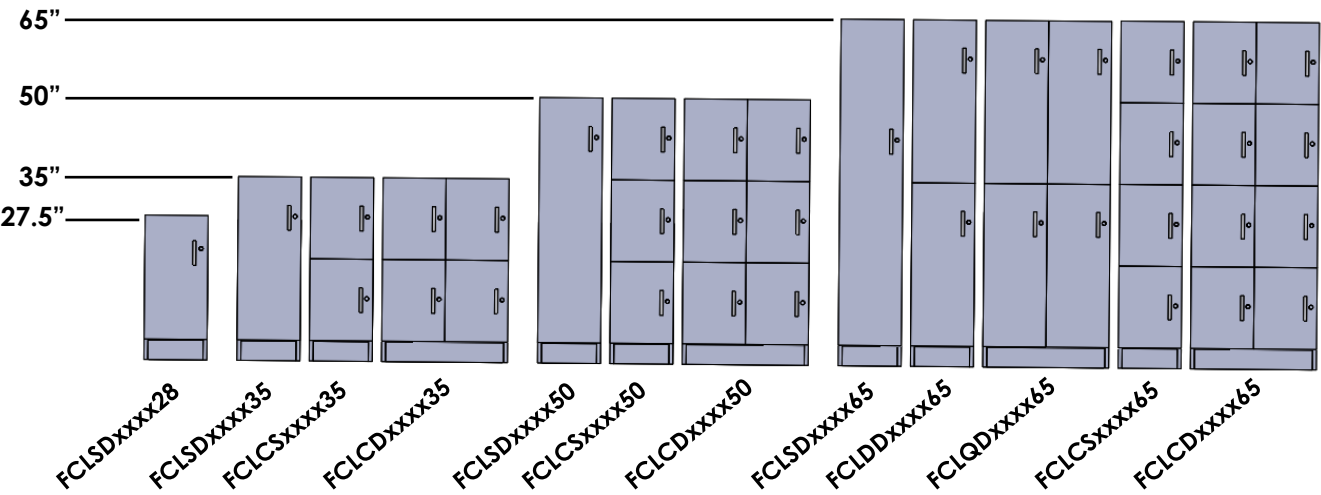
Accessories



FCLHOOK
Hook



FCLROD
Coat Rod



Finishes

Please see <https://www.fluidconcepts.ca/Furniture-Finishes-s/46.htm>

Base Finish - Your choice of Grade 1 laminate finishes. A "B" is placed in front of the laminate code to indicate it is the choice for the base of the locker.

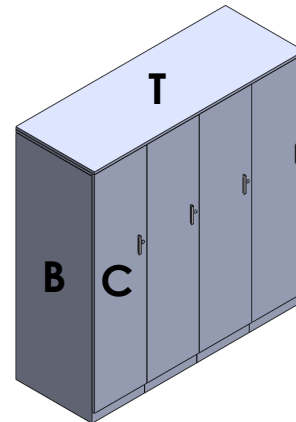
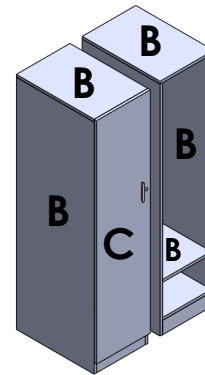
Example **BFG** for a Folkstone Grey base.

Front Finish - Your choice of Grade 1 or Grade 2 laminate finishes. A "C" is placed in front of the laminate code to indicate it is the choice for the Front of the locker.

Example **CSW** for a Silverwood Front.

Common Top - Your choice of Grade 1 or Grade 2 laminate finishes. A "T" is placed in front of the laminate code to indicate it is the choice for the common top.

Example **TNW** for a Nova White Common Top.



Storage legend

C - Front

B -Base

T - Common Top

Examples

Base = **BFG**, Folkstone Grey

Front = **CSW**, Silverwood

Common Top=**TNW**, Nova White

Features

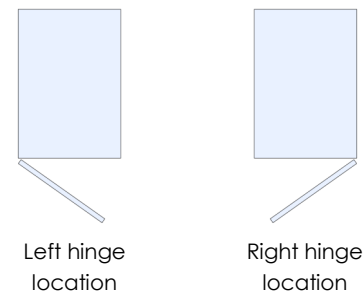
- Full and half height lockers come with one 2 prong hook. An additional hook can be purchased separately. Alternatively, a coat rod can be ordered if required.
- Full and half height lockers come with shelf hole patterns at top and bottom of unit. This allows the user to change the shelf location based on their needs. One shelf is included with all full and half height lockers. Additional shelves can be ordered.
- Levelling glides are included which provide 3/4" of levelling.

Construction

- Lockers are constructed from 3/4" thick laminate. The Base is constructed from Thermofused Laminate, while a choice of Thermofused or High Pressure Laminate is available for the fronts and common tops.
- Door hinges allow for 109 degree opening.
- Lockers have the ability to gang together. Ganging hardware must be ordered.
- All units have a 3" kick plate.
- Locker and Cubby Locker units ship assembled.

Options

- Two standard handles are available. An electronic lock is available at an upcharge of \$440 list per front.
- 21 Standard laminates are available to choose from.
- The locker Base and Front can be ordered in different finishes. Please see How To Specify section on pages 8/9.
- Common top are available.
- Number plates, additional hooks, additional shelves and a coat rod are all available as addons.
- Lockers can be keyed alike or random. Please see key alike ordering page. Additionally, master and change keys are available for facilities purposes.
- Lockers can be specified as hinging on the left or right. They can also be ordered without fronts.



Handle Style Codes



BX1 - Box Handle







LP1 - Medium Loop



ELL - Electronic Lock
Add \$440.00 List Per Front

Keys

While each locker with a traditional lock comes with a key, additional keys can be purchased for extra convenience or facilities reasons. A master key will allow management to access any locker. A change key will help remove a lock core in order to change out the lock.

	Product Code	Product Description	List
	1 KEY2	Set of 2 Keys	39
	1 LKEY2	Set of 2 Keys and Lock Core	55
	1 CHKEY1	Change Key	22
	1 MKEY1	Master Key	22

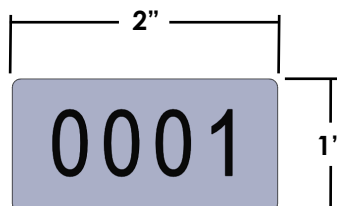
Ganging

Ganging hardware can be ordered to attach each locker to its neighbor. This is done one site. It is recommended that the lockers be properly leveled before ganging hardware is attached. Lockers have 3/4" of levelling. Rather than wood screws, male/female bolt connections are provided to assist in lining lockers up. One Set will connect two lockers together. Four sets would be needed to connect 5 lockers together.

Product Code	Product Description	List
1GANG1	Ganging Hardware Set	22

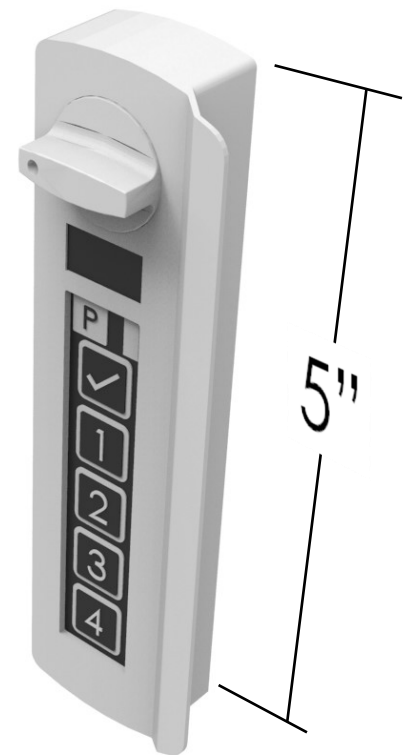
Number Plates

Number plates are available for purchase. The plates are attached with adhesive tape and installed in the field. Numbers will be assigned based on the quantity ordered, starting with the number 1. If 15 plates are ordered, you will receive numbers 1 thru 15. For special requests please contact the factory for assistance.



Electronic Locks

- Three user modes:
 - **Resident Employee.** A user is assigned a locker. Can be assigned by default admin code or by e mail via the smartphone app.
 - **Shared Use (Hotelling).** Any free locker can be used. Any code to lock, same code to unlock. Code is then erased and unit is ready for the next user.
 - **Multi User.** In Resident Employee mode, additional users can be added. Each user is separately identified with their own code for added security.
- Administration of Electronic Locks through smartphone app. Locks can be configured onsite by Administration.
- Change user code or enter programme mode with admin code on keypad or smartphone app.
- Administrative functions include:
 - Unlock and lock any electronic lock with one click.
 - Discover and reset lost passcodes.
 - Assign, delete and manage users.
 - Access history log.
- Green / Yellow / Red LED light system to identify lock status.
- External Micro-B USB for charging or emergency power.
- A 10 port charger is available for multi unit charging.
- User access through keypad or smartphone app.
- To specify an electronic lock see page 8 and 9.
- Handle style code: **ELL**
- Add **\$440 list (per front)** to Locker or Cubby list price.



Electronic Lock Charging Kits

Mobile Charging Kit - ELLCRG

- 10 Port mobile charging kit.
- Contains a base station and 10 USB power banks.
- Base station will charge power banks.
- Each power bank can then charge one lock via USB.

Wired Charging Kit - ELLCRGW

- 10 Port wired charging kit.
- Contains a base station and ten 6-foot USB Cables.
- Base station is brought to locks and connected to building power.
- Locks are charged by base station via USB cables.

Product Code	Product Description	List
ELLCRG	10 Port Mobile Electronic Lock Charge Kit - With Power Banks	2,475
ELLCRGW	10 Port Wired Electronic Lock Charge Kit	1,575



A key-alike request can be made in order to group a series of lockers together which can be controlled with one key. Please submit this form with your purchase order. In addition to key-alike information, this form can be used to purchase additional Master Keys, Core Removal Keys and Cores. The key tagging information will allow you to have keys and cores grouped by floor, area, cluster ect.

Job Information

Your PO# _____

PO Date _____

Job Tag _____

Shipping Information

Company _____

Contact Name _____

Contact Phone _____

Address _____

City _____

State _____ ZIP _____

Customer Information

Company _____

Contact Name _____

Contact Phone _____

Contact E mail _____

Address _____

City _____

State _____ ZIP _____

Handle TypeBox (BX1) ☐Medium Loop (LP1) ☐Electronic ☐**Additional Keys**

Master Key - 1 MKEY1 - \$20 List ea

QTY _____

Change Key - 1 CHKEY1- \$20 List ea

QTY _____

Key Alike Information

_____ Sets of _____ Keyed alike keys.

_____ Sets of _____ Keyed alike keys.

_____ Sets of _____ Keyed alike keys.

_____ Sets of _____ Keyed alike keys.

_____ Sets of _____ Keyed alike keys.

_____ Sets of _____ Keyed alike keys.

_____ Sets of _____ Keyed alike keys.

_____ Sets of _____ Keyed alike keys.

Key Tagging

Qty of Keys/Cores	Key Alike or Random	Tagging Information

Lockers and Cubby Lockers

In order to properly specify a locker, five pieces of information are required. The Locker code, Hinge location, Base finish, Front finish and Handle Choice must be provided.

Locker Code - Please select your chosen style of locker.

Hinge location - Your choice of hinge on the left (**L**) or the right (**R**) hand side of the door.
If the without fronts option is required, use code (**NF**)

Base Finish - Your choice of Grade 1 laminate finishes. A "B" is placed in front of the laminate code to indicate it is the choice for the base of the locker. Example **BFG** for a Folkstone Grey base.

Front Finish - Your choice of Grade 1 or Grade 2 laminate finishes. A "C" is placed in front of the laminate code to indicate it is the choice for the Front of the locker. Example **CSW** for a Silverwood Front. NOTE: if the without fronts option was chosen, a Front Finish is not required.

Handle Choice - Please select your chosen style of handle and lock. **BX1** Box Handle, **LP1** Medium Loop or **ELL** Electronic Lock. NOTE: if the without fronts option was chosen, a Handle Choice is not required.

Common Tops

Top Finish - Your choice of Grade 1 or Grade 2 laminate finishes. A "T" is placed in front of the laminate code to indicate it is the choice for the common top. Example **TNW** for a Nova White Common Top.

Additional Shelves

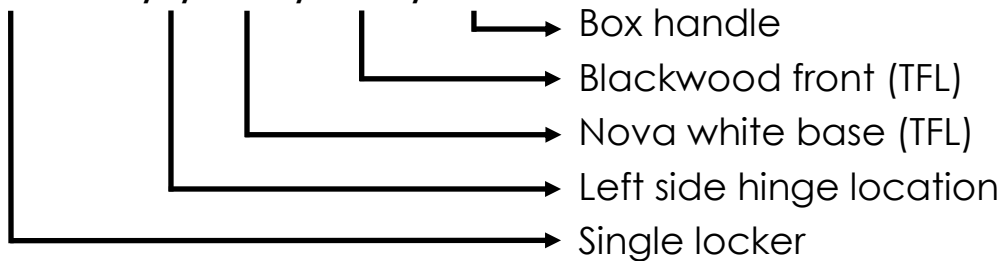
Base Finish - Your choice of Grade 1 laminate finishes. A "B" is placed in front of the laminate code to indicate it is the choice for the base of the locker. Example **BFG** for a Folkstone Grey base.

Key Alike

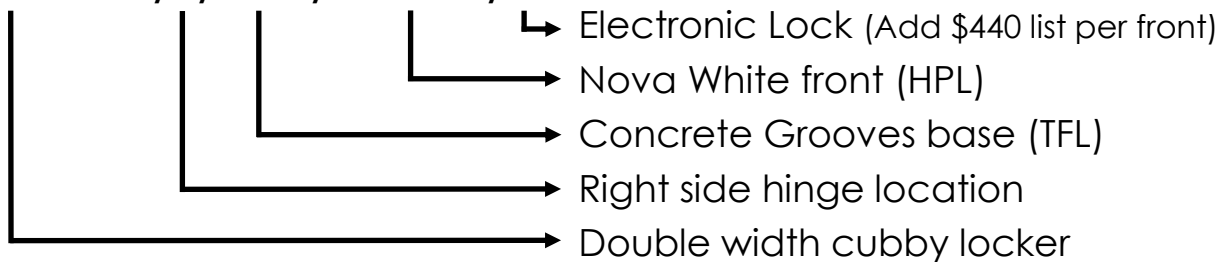
Please see "Key Alike" form on page 7. Form is to be submitted with your purchase order. Information on lock core Change Keys as well as Master Keys is also found on page 7.

Example Codes

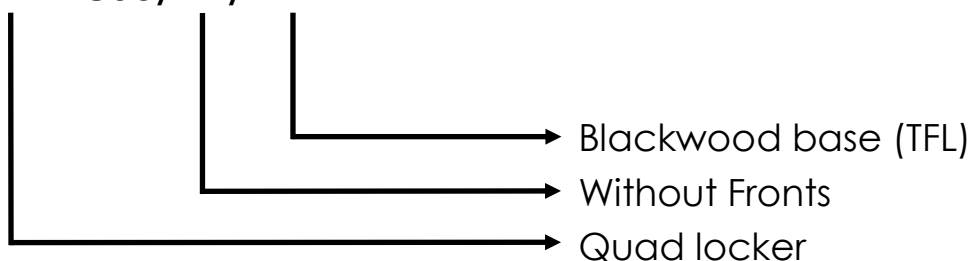
Single Locker - Hinge on left side, Base TFL laminate, Front TFL Laminate, Box handle.

FCLSD161865/L/BNW/CBW/BX1

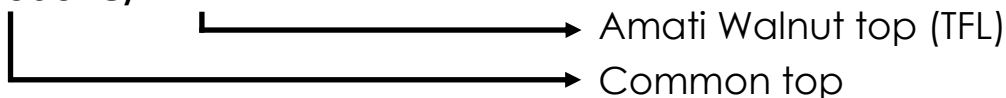
Double Width Cubby - Hinge on right side, Base TFL laminate, Front **HPL** Laminate, **Electronic lock**.

FCLCD241850/R/BCG/CHPNW/ELL

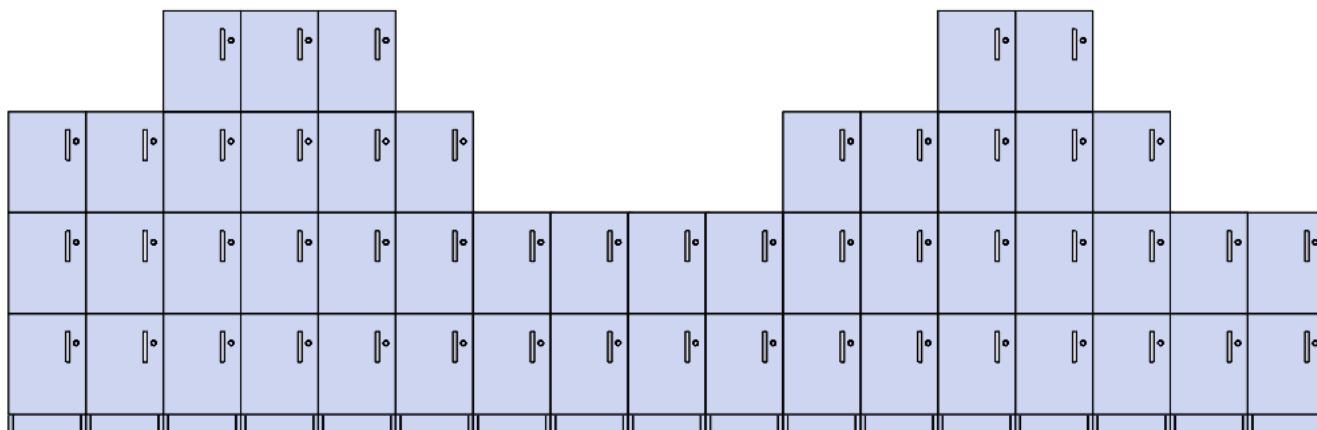
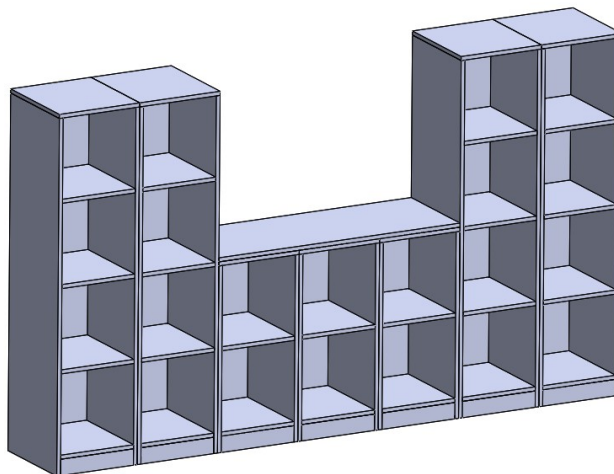
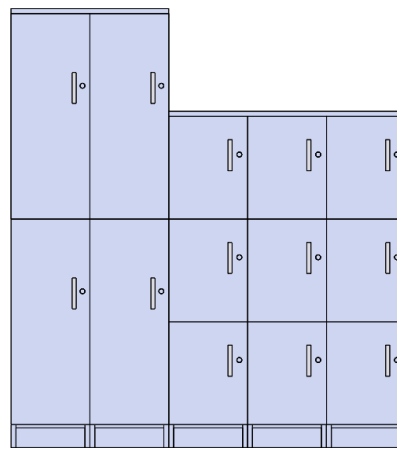
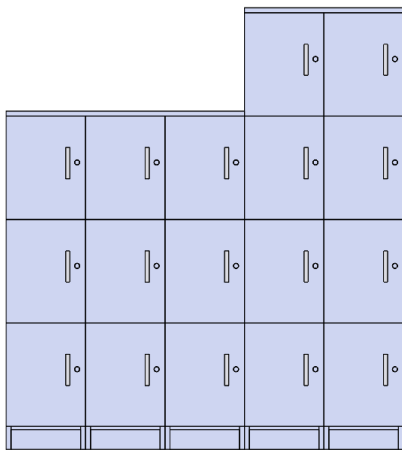
Quad locker - **Without Fronts**, Base TFL laminate, Front TFL Laminate. Note: because the without fronts option was chosen, a front and handle choice is not required.

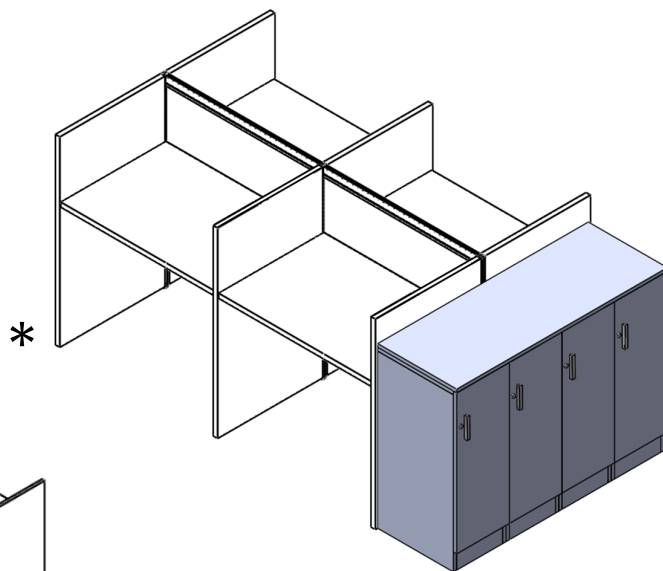
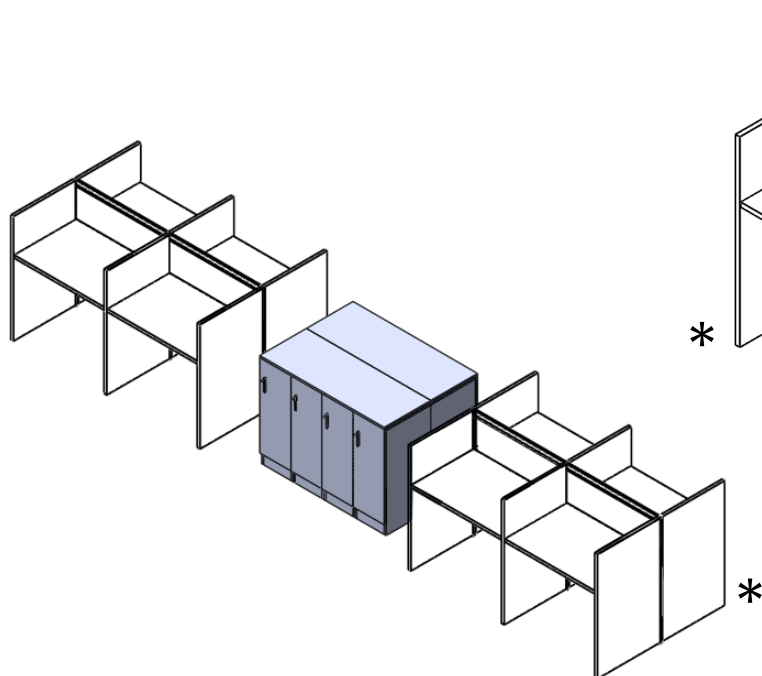
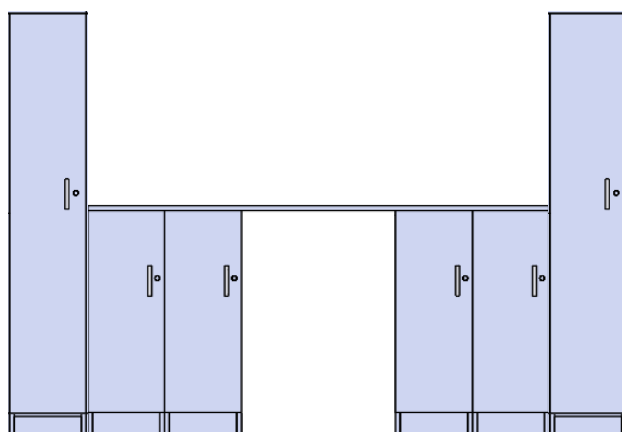
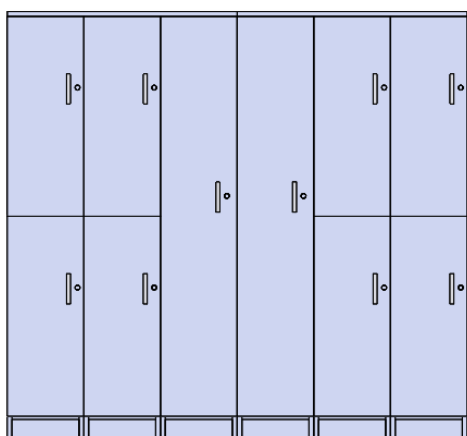
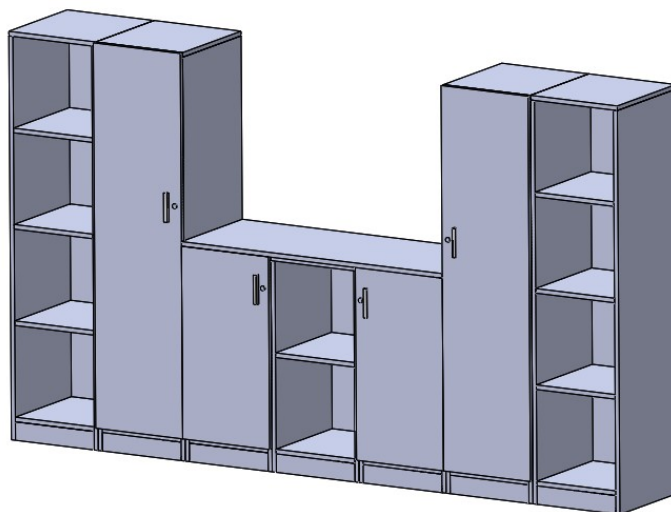
FCLQD241865/NF/BBW

Common Top, TFL Laminate.

FCLWS6018/TAW

Lockers

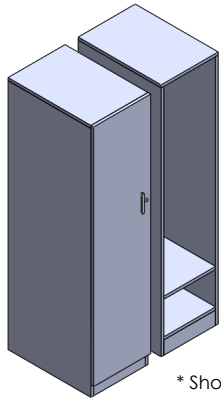




* SEE BLADE PRICE AND PRODUCT GUIDE FOR WORKSTATION DETAILS

FCLSD

Single Locker



* Shown without front.

* Shown with front.
Left hand hinge location shown

What's Included:

One Single Locker (with or without door),
Handle and standard lock (with door option), **For electronic Lock add \$440 list Per Front**

Finish Options:

Please see www.fluidgroup.com/finishes for laminate options.

Information Required to Order: (see pages 8/9)

Follow this sequence of steps to develop the full code including available options.

- Locker Code - Select your choice of locker style and size
- Hinge Location - (L) Left, (R) Right, (NF) Without Fronts
- Base Finish - Grade 1 finishes, TFL
- Front Finish - Grade 1 finishes, TFL or Grade 2 finishes, HPL
- Handle Style - (BX1) Box Handle, (LP1) Medium Loop, (ELL) Electronic Lock (for Electronic Locks add \$440 List per Front)

Example Code: **FCLSD121850/L/BNW/CSW/BX1** (Left Hinge Location, Base Nova White, Front Silverwood, Box Handle)

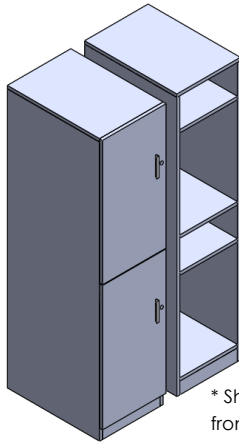
Notes:

Grade 2 pricing refers to HPL front only.

Product Code	Product Description	# of Fronts	Interior Dimensions	List G1 (TFL) With Fronts	List G2 (HPL) With Fronts	List G1 (TFL) W/O Fronts
FCLSD121828	Single Locker, 12"W x 18"D x 28"H	1	10.5W x 16.5D x 22.5H	1,084	1,355	993
FCLSD121835	Single Locker, 12"W x 18"D x 35"H	1	10.5W x 16.5D x 30.5H	1,150	1,438	1,060
FCLSD121850	Single Locker, 12"W x 18"D x 50"H	1	10.5W x 16.5D x 45.5H	1,271	1,589	1,181
FCLSD121865	Single Locker, 12"W x 18"D x 65"H	1	10.5W x 16.5D x 60.5H	1,513	1,892	1,423
FCLSD122428	Single Locker, 12"W x 24"D x 28"H	1	10.5W x 22.5D x 22.5H	1,144	1,430	1,053
FCLSD122435	Single Locker, 12"W x 24"D x 35"H	1	10.5W x 22.5D x 30.5H	1,210	1,513	1,120
FCLSD122450	Single Locker, 12"W x 24"D x 50"H	1	10.5W x 22.5D x 45.5H	1,331	1,664	1,241
FCLSD122465	Single Locker, 12"W x 24"D x 65"H	1	10.5W x 22.5D x 60.5H	1,573	1,967	1,483
FCLSD161828	Single Locker, 16"W x 18"D x 28"H	1	14.5W x 16.5D x 22.5H	1,205	1,507	1,114
FCLSD161835	Single Locker, 16"W x 18"D x 35"H	1	14.5W x 16.5D x 30.5H	1,271	1,589	1,181
FCLSD161850	Single Locker, 16"W x 18"D x 50"H	1	14.5W x 16.5D x 45.5H	1,392	1,740	1,302
FCLSD161865	Single Locker, 16"W x 18"D x 65"H	1	14.5W x 16.5D x 60.5H	1,634	2,043	1,544
FCLSD162428	Single Locker, 16"W x 24"D x 28"H	1	14.5W x 22.5D x 22.5H	1,265	1,582	1,174
FCLSD162435	Single Locker, 16"W x 24"D x 35"H	1	14.5W x 22.5D x 30.5H	1,331	1,664	1,241
FCLSD162450	Single Locker, 16"W x 24"D x 50"H	1	14.5W x 22.5D x 45.5H	1,452	1,815	1,362
FCLSD162465	Single Locker, 16"W x 24"D x 65"H	1	14.5W x 22.5D x 60.5H	1,694	2,118	1,604

FCLDD

Double Locker



* Shown with fronts.
Left hand hinge
location shown

* Shown without
fronts.

What's Included:

One Double Locker (with or without door),
Handle and Standard Lock (with door option), **For Electronic Lock Add \$440 List Per Front**

Finish Options:

Please see www.fluidgroup.com/finishes for laminate options.

Information Required to Order: (see pages 8/9)

Follow this sequence of steps to develop the full code including available options.

- **Locker Code** - Select your choice of locker style and size
- **Hinge Location** - (L) Left, (R) Right, (NF) Without Fronts
- **Base Finish** - Grade 1 finishes, TFL
- **Front Finish** - Grade 1 finishes, TFL or Grade 2 finishes, HPL
- **Handle Style** - BX1) Box Handle, (LP1) Medium Loop,
(ELL) Electronic Lock (for Electronic Locks add \$440 List per Front)

Example: **FCLDD122465/L/BNW/CSW/B1** (Left Hinge Location, Base Nova White,
Front Silverwood, Box Handle)

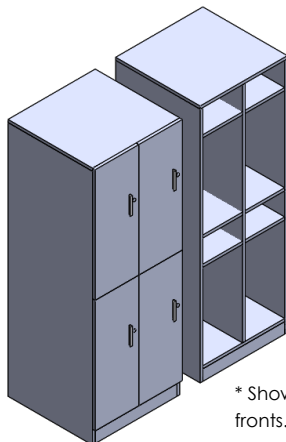
Note:

Grade 2 pricing refers to HPL fronts only.

Product Code	Product Description	# of Fronts	Interior Dimensions	List G1 (TFL) With Fronts	List G2 (HPL) With Fronts	List G1 (TFL) W/O Fronts
FCLDD121865	Double Locker, 12"W x 18"D x 65"H	2	10.5W x 16.5D x 30H	1,682	2,103	1,561
FCLDD122465	Double Locker, 12"W x 24"D x 65"H	2	10.5W x 22.5D x 30H	1,755	2,194	1,634
FCLDD161865	Double Locker, 16"W x 18"D x 65"H	2	14.5W x 16.5D x 30H	1,755	2,194	1,634
FCLDD162465	Double Locker, 16"W x 24"D x 65"H	2	14.5W x 22.5D x 30H	1,936	2,420	1,815

FCLQD

Quad Locker



* Shown with fronts.
Left hand hinge

* Shown without
fronts.

What's Included:

One Quad Locker (with or without door),
Handle and Standard Lock (with door option), **For Electronic Lock Add \$440 List Per Front**

Finish Options:

Please see www.fluidgroup.com/finishes for laminate options.

Information Required to Order: (see pages 8/9)

Follow this sequence of steps to develop the full code including available options.

- **Locker Code** - Select your choice of locker style and size
- **Hinge Location** - (L) Left, (R) Right, (NF) Without Fronts
- **Base Finish** - Grade 1 finishes, TFL
- **Front Finish** - Grade 1 finishes, TFL or Grade 2 finishes, HPL
- **Handle Style** - BX1) Box Handle, (LP1) Medium Loop,
(ELL) Electronic Lock (for Electronic Locks add \$440 List per Front)

Example: **FCLQD242465/L/BNW/CSW/B1** (Left Hinge Location, Base Nova White,
Front Silverwood, Box Handle)

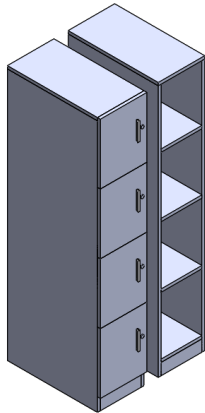
Note:

Grade 2 pricing refers to HPL fronts only.

Product Code	Product Description	# of Fronts	Interior Dimensions	List G1 (TFL) With Fronts	List G2 (HPL) With Fronts	List G1 (TFL) W/O Fronts
FCLQD241865	Quad Locker, 24"W x 18"D x 65"H	4	14.5W x 16.5D x 30H	2,391	2,989	2,149
FCLQD242465	Quad Locker, 24"W x 24"D x 65"H	4	14.5W x 22.5D x 30H	2,844	3,555	2,602

FCLCS

Single Width Cubby Locker



* Shown without fronts.

* Shown with fronts. Left hand hinge location shown

What's Included:

One Single Width Cubby Locker (with or without door),
Handle and Standard Lock (with door option), **For Electronic Lock Add \$440 List Per Front**

Finish Options:

Please see www.fluidgroup.com/finishes for laminate options.

Information Required to Order: (see pages 8/9)

Follow this sequence of steps to develop the full code including available options.

- Locker Code - Select your choice of locker style and size
- Hinge Location - (L) Left, (R) Right, (NF) Without Fronts
- Base Finish - Grade 1 finishes, TFL
- Front Finish - Grade 1 finishes, TFL or Grade 2 finishes, HPL
- Handle Style - BX1) Box Handle, (LP1) Medium Loop,
(ELL) Electronic Lock (for Electronic Locks add \$440 List per Front)

Example: **FCLCS121850/L/BNW/CSW/B1** (Left Hinge Location, Base Nova White, Front Silverwood, Box Handle)

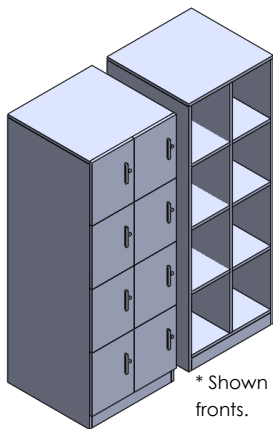
Note:

Grade 2 pricing refers to HPL fronts only.

Product Code	Product Description	# of Fronts	Interior Dimensions	List G1 (TFL) With Fronts	List G2 (HPL) With Fronts	List G1 (TFL) W/O Fronts
FCLCS121835	Single Width Cubby 12"W x 18"D x 35"H	2	10.5W x 16.5D x 14.9H	1,392	1,740	1,271
FCLCS121850	Single Width Cubby 12"W x 18"D x 50"H	3	10.5W x 16.5D x 14.6H	1,573	1,967	1,392
FCLCS121865	Single Width Cubby 12"W x 18"D x 65"H	4	10.5W x 16.5D x 14.6H	1,997	2,497	1,755
FCLCS161835	Single Width Cubby 16"W x 18"D x 35"H	2	14.5W x 16.5D x 14.9H	1,513	1,892	1,392
FCLCS161850	Single Width Cubby 16"W x 18"D x 50"H	3	14.5W x 16.5D x 14.6H	1,634	2,043	1,452
FCLCS161865	Single Width Cubby 16"W x 18"D x 65"H	4	14.5W x 16.5D x 14.6H	2,178	2,723	1,936

FCLCD

Double Width Cubby Locker



* Shown without
fronts.

* Shown with fronts.
Left hand hinge
location shown

What's Included:

One Double Width Cubby Locker (with or without door),
Handle and Standard Lock (with door option), **For Electronic Lock Add \$440 List Per Front**

Finish Options:

Please see www.fluidgroup.com/finishes for laminate options.

Information Required to Order: (see pages 8/9)

Follow this sequence of steps to develop the full code including available options.

- Locker Code - Select your choice of locker style and size
- Hinge Location - (L) Left, (R) Right, (NF) Without Fronts
- Base Finish - Grade 1 finishes, TFL
- Front Finish - Grade 1 finishes, TFL or Grade 2 finishes, HPL
- Handle Style - BX1) Box Handle, (LP1) Medium Loop,
(ELL) Electronic Lock (for Electronic Locks add \$440 List per Front)

Example: **FCLDD242450/L/BNW/CSW/B1** (Left Hinge Location, Base Nova White,
Front Silverwood, Box Handle)

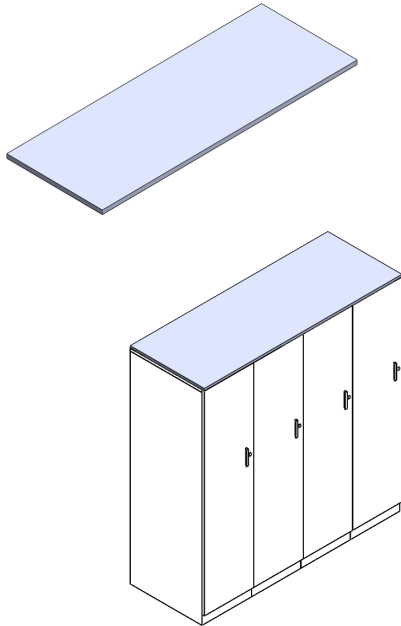
Note:

Grade 2 pricing refers to HPL fronts only.

Product Code	Product Description	# of Fronts	Interior Dimensions	List G1 (TFL) With Fronts	List G2 (HPL) With Fronts	List G1 (TFL) W/O Fronts
FCLCD241835	Double Width Cubby 24"W x 18"D x 35"H	4	10.5W x 16.5D x 14.9H	2,287	2,363	2,045
FCLCD241850	Double Width Cubby 24"W x 18"D x 50"H	6	10.5W x 16.5D x 14.6H	2,771	2,863	2,408
FCLCD241865	Double Width Cubby 24"W x 18"D x 65"H	8	10.5W x 16.5D x 14.6H	3,388	3,500	2,904

FCLWS

Common Top



What's Included:

Common Top, All Necessary Hardware.

Finish Options:

Please see www.fluidgroup.com/finishes for laminate options.

Information Required to Order:

Common Top Code / Laminate Finish

Example: **FCLWS4824/THPNW** (High Pressure Nova White)

Product Code	Product Description	Number of Lockers			List (TFL) Grade 1	List (HPL) Grade 2
		12" Wide	16" Wide	24" Wide		
FCLWS1218	Common Top, 12" W x 18" Deep	1			73	105
FCLWS1618	Common Top, 16" W x 18" Deep		1		99	146
FCLWS2418	Common Top, 24" W x 18" Deep	2		1	148	209
FCLWS3218	Common Top, 32" W x 18" Deep		2		196	273
FCLWS3618	Common Top, 36" W x 18" Deep	3			235	324
FCLWS4818	Common Top, 48" W x 18" Deep	4	3	2	283	382
FCLWS6018	Common Top, 60" W x 18" Deep	5			373	503
FCLWS6418	Common Top, 64" W x 18" Deep		4		396	533
FCLWS7218	Common Top, 72" W x 18" Deep	6		3	420	564
FCLWS8018	Common Top, 80" W x 18" Deep		5		481	645
FCLWS1224	Common Top, 12" W x 24" Deep	1			91	128
FCLWS1624	Common Top, 16" W x 24" Deep		1		142	200
FCLWS2424	Common Top, 24" W x 24" Deep	2		1	194	271
FCLWS3224	Common Top, 32" W x 24" Deep		2		214	295
FCLWS3624	Common Top, 36" W x 24" Deep	3			259	357
FCLWS4824	Common Top, 48" W x 24" Deep	4	3	2	324	445
FCLWS6024	Common Top, 60" W x 24" Deep	5			444	609
FCLWS6424	Common Top, 64" W x 24" Deep		4		468	642
FCLWS7224	Common Top, 72" W x 24" Deep	6		3	493	675
FCLWS8024	Common Top, 80" W x 24" Deep		5		543	799

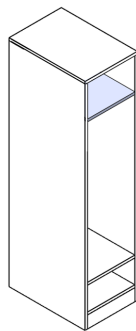
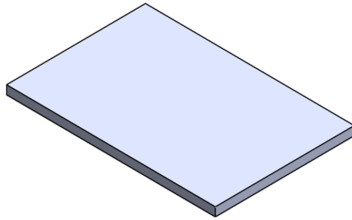
FCLAS

Additional Shelf

What's Included:
Additional Shelf.

Finish Options:
Please see www.fluidgroup.com/finishes for laminate options.

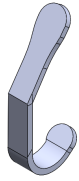
Information Required to Order:
Additional Shelf Code / Laminate Finish
Example: **FCLAS1218/BNW** (Base Nova White)



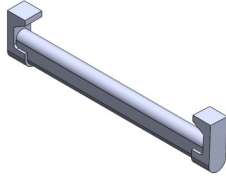
Product Code	Product Description	List (TFL) Grade 1
FCLAS1218	Additional Shelf, 12" W x 18" Deep	68
FCLAS1224	Additional Shelf, 12" W x 24" Deep	83
FCLAS1618	Additional Shelf, 16" W x 18" Deep	91
FCLAS1624	Additional Shelf, 16" W x 24" Deep	130

FCL

Accessories



FCLHOOK



FCLROD

What's Included:

Accessory. All necessary Hardware

Finish Options:

Not Applicable

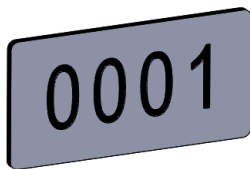
Information Required to Order:

Accessory Code

Product Code	Product Description	List
FCLHOOK	Coat Hook	18
FCLROD12	12" Coat Rod	31
FCLROD16	16" Coat Rod	42
1 KEY2	Set of 2 keys	39
1 LKEY2	Set of 2 Keys and Lock Cores	55
1 CHKEY1	Change Key	22
1 MKEY1	Master Key	22
1 GANG1	Ganging hardware Set	22

NUMPLT

Number Plate



What's Included:

Self Adhesive Number Plate.

Finish Options:

Not Applicable

Information Required to Order:

Number Plate Code.

Notes:

If 10 plates are ordered, you will receive numbers 1 to 10. If another series is required, please contact the factory.

Product Code	Product Description	List
NUMPLT	1" x 2" Self Adhesive Number Plate	17

Lockers

How to Order - Please send all purchase orders to order@fluidgroup.com or fax to 1.866.769.6057.

Questions - Call us toll free at 1.866.933.5258.

Please see www.fluidgroup.com for all information including:

- Terms & conditions
- Warranty information
- Local representation information
- Finishes & Resources

Thank-you for choosing fluidconcepts!

Fluidconcept & design inc.
96 Planchet Rd.
Concord Ontario Canada
L4K 2C7

TF. 1.866.933.5258
Fax. 1.866.789.6057
www.fluidgroup.com
order@fluidgroup.com

