
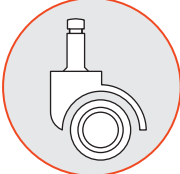
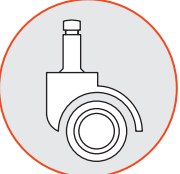
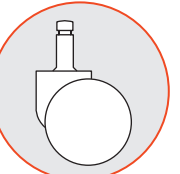
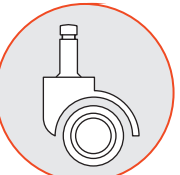
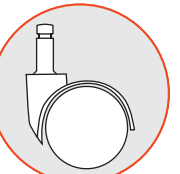
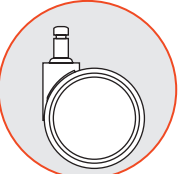
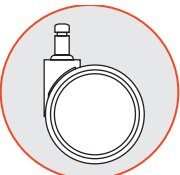
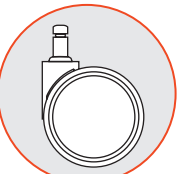
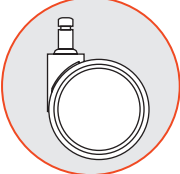
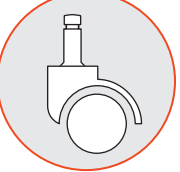
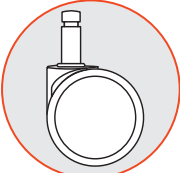
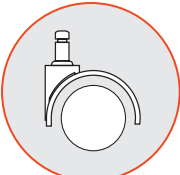
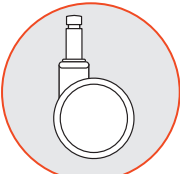
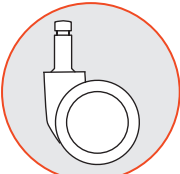


caster guide

*Load Rating in (lbs) per caster/glide

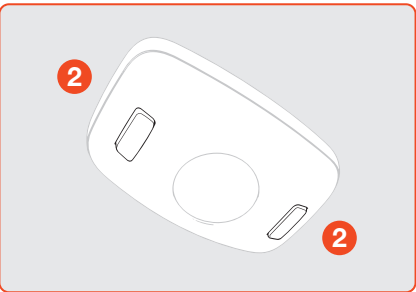
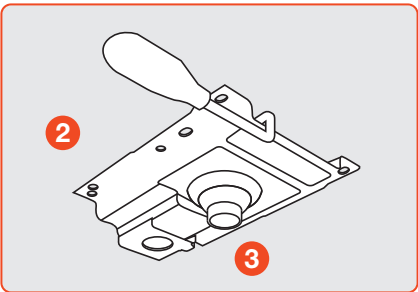
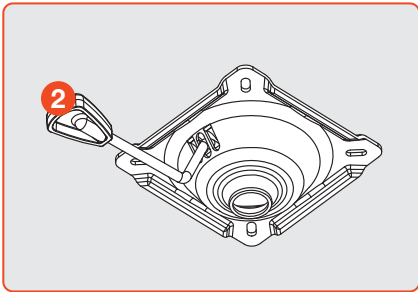
	C1 CARPET CASTERS \$25	HOODED TWIN WHEEL CASTER WHEEL: 50 MM BARREL: 42 MM LOAD RATING: 110 LBS*	Best for use on carpeted surfaces. Hard nylon wheels are recommended for use on low-to-medium pile carpeting without padding. Dual wheels place more wheel surface on the carpet pile for optimum weight distribution. Wheels move in opposite directions to minimize carpet fiber twisting.
	C1S HARD FLOOR AND CARPET CASTERS \$35	HOODED TWIN WHEEL CASTER WHEEL: 50 MM BARREL: 42 MM LOAD RATING: 110 LBS*	Designed for use on hardwood floors, tile, chair mats, linoleum and concrete surfaces in an open office/workspace environment. (Lab, healthcare, classroom, and conference room.) Wheels are made from a soft polyurethane material. Set of five used with star bases.
	C2S SELF-LOCKING HARD FLOOR AND CARPET CASTERS \$35	HOODED TWIN WHEEL CASTER WHEEL: 50 MM BARREL: 42 MM LOAD RATING: 110 LBS*	Designed for use on hardwood floors, tile, chair mats, linoleum and concrete surfaces in an open office/workspace environment. (Lab, healthcare, classroom, and conference room.) Wheels are made from a soft polyurethane material. Set of five used with star bases. The wheels feature auto-lock; The safety brakes engage when the chair is not in use, this prevents the chair from rolling away when standing up.
	C4 HEAVY DUTY HARD WOOD FLOOR AND CARPET CASTERS \$25	HOODLESS TWIN WHEEL CASTER WHEEL: 60 MM BARREL: 38 MM LOAD RATING: 140 LBS*	Recommended when higher weight capacity is required. Large diameter hard nylon wheels designed for use on low- to medium-pile carpeting with or without padding. Large diameter dual wheels place more wheel surface on the carpet pile for optimum weight distribution. Wheels move in opposite directions to minimize carpet fiber twisting.
	C5 CARPET CASTERS \$30	HOODED TWIN WHEEL CASTER WHEEL: 50 MM BARREL: 27 MM LOAD RATING: 110 LBS*	Best for use on carpeted surfaces. Hard nylon wheels are recommended for use on low- to medium-pile carpeting without padding. Dual wheels place more wheel surface on the carpet pile for optimum weight distribution. Wheels move in opposite directions to minimize carpet fiber twisting. Set of four used on guest chairs.
	C5S HARD FLOOR AND CARPET CASTERS \$30	HOODED TWIN WHEEL CASTER WHEEL: 50 MM BARREL: 13 MM LOAD RATING: 110 LBS*	Designed for use on hardwood floors, tile, chair mats, linoleum and concrete surfaces in an open office/workspace environment. (Lab, healthcare, classroom, and conference room.) Wheels are made from a soft polyurethane material. Set of four used on guest chairs.
	C6 LARGE DIAMETER CARPET CASTERS \$30	TWIN WHEEL CASTER WHEEL: 60 MM BARREL: 25 MM LOAD RATING: 140 LBS*	Recommended for use on carpeted surfaces. Large diameter hard nylon wheels are recommended for use on low to medium pile carpeting with or without padding. 60 mm dual wheels place more wheel surface on the carpet pile for optimum weight distribution and ease of movement. Wheels move in opposite directions to minimize carpet fiber twisting.

PARTS AND ACCESSORIES DISCOUNT
INDIVIDUAL PARTS & ACCESSORIES WHEN PURCHASED SEPARATE FROM A CHAIR RECEIVE A 50% DISCOUNT, WHICH INCLUDES SHIPPING.

	C6S LARGE DIAMETER HARD FLOOR AND CARPET CASTERS \$35	TWIN WHEEL CASTER WHEEL: 60 MM BARREL: 25 MM LOAD RATING: 140 LBS*	Designed for use on hardwood floors, tile, chair mats, linoleum and concrete surfaces in an open office/workspace environment. (Lab, healthcare, classroom, and conference room.) Wheels are made from a soft polyurethane material. Set of five used with star bases.
	C7 CHROME-ACCENTED HARD FLOOR AND CARPET CASTERS \$35	TWIN WHEEL CASTER WHEEL: 60 MM BARREL: 25 MM LOAD RATING: 140 LBS*	Recommended for use on carpeted surfaces. Large diameter hard nylon wheels are recommended for use on low to medium pile carpeting with or without padding. 65mm dual wheels place more wheel surface on the carpet pile for optimum weight distribution and ease of movement. Wheels move in opposite directions to minimize carpet fiber twisting.
	C8S LARGE DIAMETER HARD FLOOR AND CARPET CASTERS \$35	TWIN WHEEL CASTER WHEEL: 75 MM BARREL: 22 MM LOAD RATING: 160 LBS*	Recommended for use on carpeted or hard surfaces. Large diameter soft nylon wheels are recommended for use on low to medium pile carpeting with or without padding. 75mm dual wheels place more wheel surface on floors for optimum weight distribution and ease of movement. Wheels move in opposite directions to minimize carpet fiber twisting.
	C9S COMPRESSION-LOCKING HARD FLOOR AND CARPET CASTERS \$50	HOODED TWIN WHEEL CASTER WHEEL: 50 MM BARREL: 42 MM LOAD RATING: 110 LBS*	Designed for use on hardwood floors, tile, chair mats, linoleum and concrete surfaces in an open office/workspace environment. (Lab, healthcare, classroom, and conference room.) The wheels feature compression-lock; The brakes engage when the user is seated in the chair. When seated this prevents the user from rolling away from the work surface.
	C10S SELF-LOCKING HARD FLOOR AND CARPET CASTERS \$50	TWIN WHEEL CASTER WHEEL: 60 MM BARREL: 25 MM LOAD RATING: 110 LBS*	Designed for use on hardwood floors, tile, chair mats, linoleum and concrete surfaces in an open office/workspace environment. (Lab, healthcare, classroom, and conference room.) The wheels feature auto-lock; The safety brakes engage when the chair is not in use, this prevents the chair from rolling away when standing up.
	C11S COMPRESSION-LOCKING HARD FLOOR AND CARPET CASTERS \$50	TWIN WHEEL CASTER WHEEL: 50 MM BARREL: 18 MM LOAD RATING: 110 LBS*	Designed for use on hardwood floors, tile, chair mats, linoleum and concrete surfaces in an open office/workspace environment. (Lab, healthcare, classroom, and conference room.) The wheels feature compression-lock; The brakes engage when the user is seated in the chair. When seated this prevents the user from rolling away from the work surface.
	C12S HARD FLOOR AND CARPET CASTERS \$25	TWIN WHEEL CASTER WHEEL: 50 MM BARREL: 16 MM LOAD RATING: 110 LBS*	Designed for use on hardwood floors, tile, chair mats, linoleum and concrete surfaces in an open office/workspace environment (Lab, healthcare, classroom and conference room). Can be used on carpet surfaces. Wheels are made of soft polyurethane material. Set of four used on guest or classroom chairs.
	C22B/G HUBLESS HARD FLOOR AND CARPET CASTERS \$35	TWIN WHEEL CASTER WHEEL: 60 MM BARREL: 25MM LOAD RATING: 110 LBS*	Recommend for use on Carpet or Hard floors. Wheels made of Polyurethane. Available in Black or Gray accents. Stylish hubless design.

control selection guide

BASIC TASK



B1 BASIC TASK

- 360° swivel
 - Pneumatic cylinder height adjustment
- Exclusively on Diddy, Dash Task and Vox Task.*

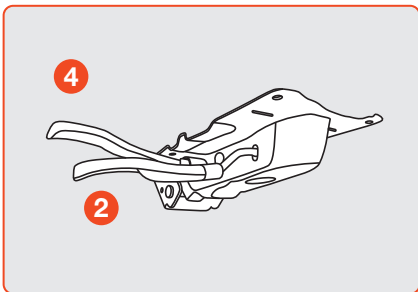
B2 BASIC TASK WITH BACK DEPTH ADJUSTMENT

- Adjustable back depth
- 360° swivel
- Pneumatic cylinder height adjustment

B3 BASIC TASK

- 360° swivel
 - Push-button pneumatic cylinder height adjustment
- Exclusively on Remy.*

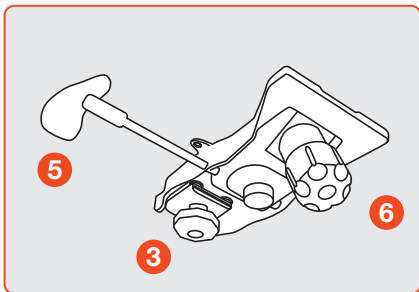
POSTURE BACK



P1 POSTURE BACK

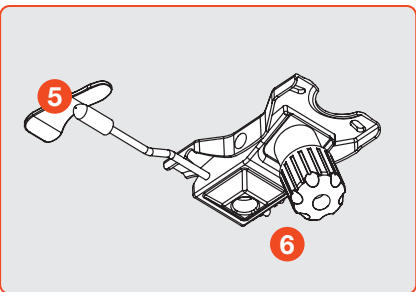
- Infinite back angle adjustment with free float
- 360° swivel
- Pneumatic cylinder height adjustment

SWIVEL TILT



S2 SWIVEL TILT WITH BACK DEPTH ADJUSTMENT

- Adjustable back depth
- Upright lock
- Center knob tension adjustment
- 360° swivel
- Pneumatic cylinder height adjustment



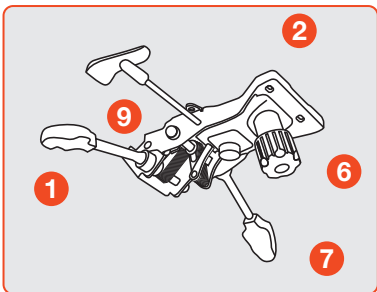
S3 SWIVEL TILT

- Upright lock
- Center knob tension adjustment
- 360° swivel
- Pneumatic cylinder height adjustment

1	INFINITE BACK ANGLE ADJUSTMENT	7	INFINITE POSITION TILT-LOCK
2	SEAT HEIGHT LEVER	8	FORWARD TILT LEVER
3	BACK DEPTH CONTROL KNOB	9	EASY-LIFT RATCHET BACK HEIGHT CONTROL
4	ARTICULATING POSTURE BACK W/ FREE FLOAT	10	BACK MULTI-LOCK W/ SAFETY RELEASE
5	SEAT HEIGHT & TILT LOCK LEVER	11	SEAT SLIDER PADDLE
6	TILT TENSION CONTROL KNOB	12	4 POSITION BACK TRAVEL CONTROL

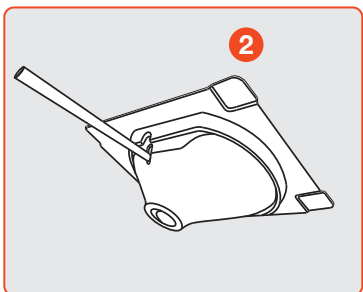
CONTROL FUNCTION GUIDE

ROCKING TILT



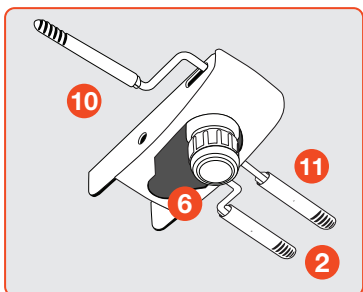
R1 ROCKING TILT

- Infinite back angle adjustment
- Infinite tilt lock
- Center knob tension adjustment
- 360° swivel
- Pneumatic cylinder height adjustment



R2 ROCKING TILT FOR LOUNGE AND GUEST

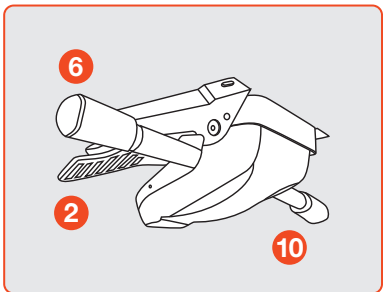
- Rock left, right, front and back
 - 360° swivel
 - Pneumatic cylinder height adjustment
- Exclusively on Jax Side, Lilly Side, Diddy Guest, Dash Task and Vox Task.*



R3 ROCKING TILT

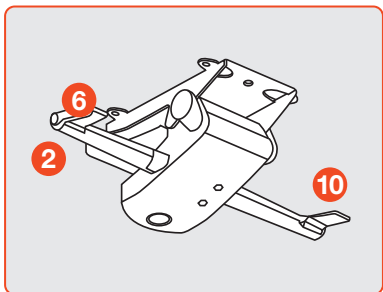
- Integrated seat slider
 - Upright lock
 - Center knob tension adjustment
 - 360° swivel
 - Pneumatic cylinder height adjustment
- Exclusively on HÅG Capisco and Capisco Puls.*

KNEE TILT



K2 ADVANCED KNEE TILT

- 4-position tilt lock
 - Side knob tension adjustment
 - 360° swivel
 - Pneumatic cylinder height adjustment
- Exclusively on Core and Vault.*

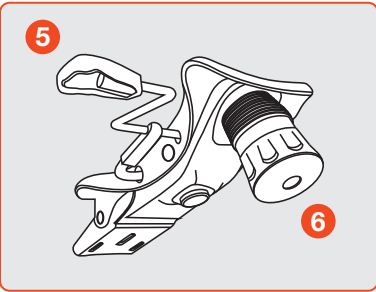


K3 ADVANCED KNEE TILT

- 4-position tilt lock
 - Side knob tension adjustment
 - 360° swivel
 - Pneumatic cylinder height adjustment
- Exclusively on Cydia.*

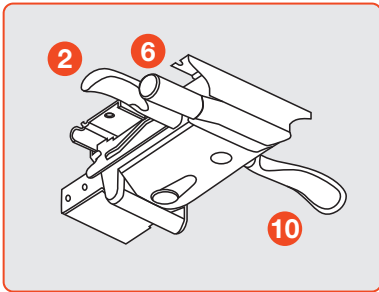
control selection guide

SYNCHRO TILT



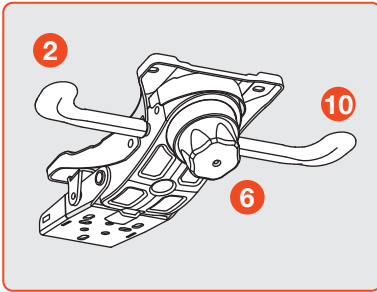
Y1 SIMPLE SYNCHRO TILT

- Upright tilt lock
- 3:1 back-to-seat tilt ratio
- Center knob tension adjustment
- 360° swivel
- Pneumatic cylinder height adjustment



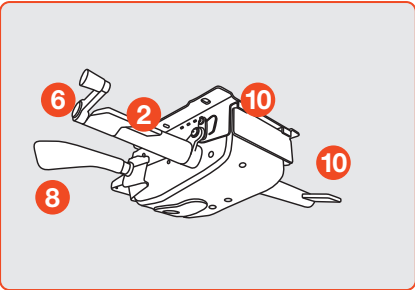
Y2 HEAVY DUTY SYNCHRO TILT

- 4-position tilt lock
- Side knob tension adjustment
- 2:1 back-to-seat tilt ratio
- 360° swivel
- Pneumatic cylinder height adjustment



Y3 FULL SYNCHRO TILT

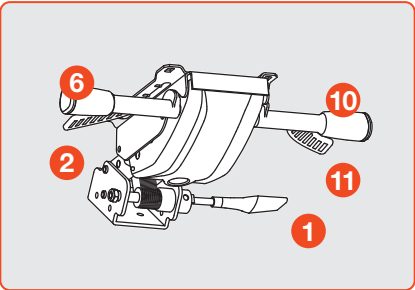
- 3-position tilt lock
- 2:1 back-to-seat tilt ratio
- Center knob tension adjustment
- 360° swivel
- Pneumatic cylinder height adjustment



Y4 INTENSIVE SYNCHRO

- Integrated seat slider
- 4-position tilt lock
- 5° forward tilt
- Side knob tension adjustment
- 2:1 back-to-seat tilt ratio
- 360° swivel
- Pneumatic cylinder height adjustment

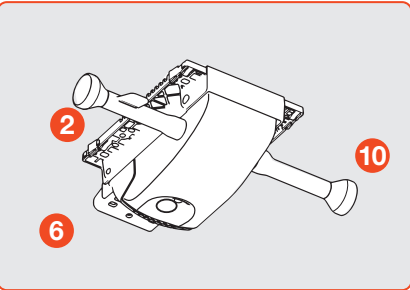
Exclusively on Aria High-Back and Strata.



Y5 ENHANCED SYNCHRO WITH BACK ANGLE ADJUSTMENT

- Integrated seat slider
- Infinite back angle adjustment
- 4-position tilt lock
- Side knob tension adjustment
- 2:1 back-to-seat tilt ratio
- 360° swivel
- Pneumatic cylinder height adjustment

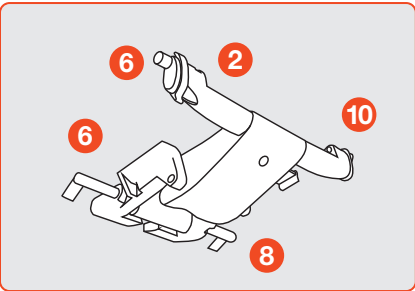
Exclusively on Acclaim and Core.



Y6 DELUXE SYNCHRO TILT

- 4-position tilt lock
- Side knob tension adjustment with 7 settings
- 2:1 back-to-seat tilt ratio
- 360° swivel
- Pneumatic cylinder height adjustment

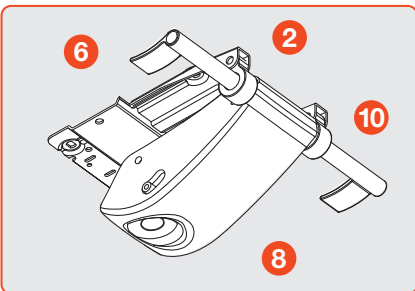
Exclusively on Sol.



X1 DYNAMIC SYNCHRO TILT

- Integrated seat slider
- 11-position tilt lock
- 10° forward tilt
- Side knob tension adjustment
- 2.6:1 back-to-seat tilt ratio
- 360° swivel
- Pneumatic cylinder height adjustment

Exclusively on Vesta.

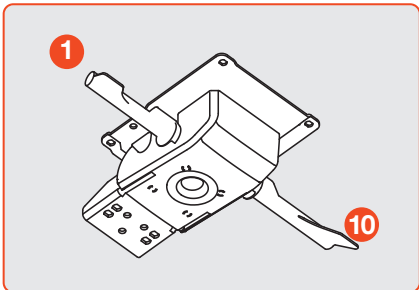


X2 DYNAMIC SYNCHRO TILT

- Integrated seat slider
- 11-position tilt lock
- 10° forward tilt
- Side knob tension adjustment
- 2.6:1 back-to-seat tilt ratio
- 360° swivel
- Pneumatic cylinder height adjustment

Exclusively on Cosmo.

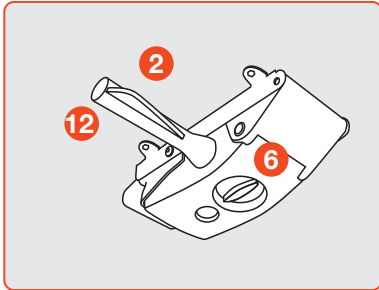
WEIGHT-BALANCED



W1 WEIGHT-BALANCED SYNCHRO TILT

- Automatic tension adjustment
- 2-position tilt lock
- 3:1 back-to-seat tilt ratio
- 360° swivel
- Pneumatic cylinder height adjustment

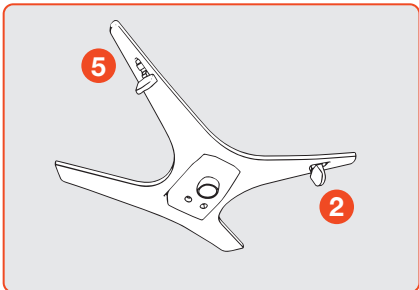
Exclusively on Core, Luna and Neo.



W2 ADVANCED WEIGHT-BALANCED SYNCHRO TILT

- Automatic tension adjustment with option to modify
- Tilt-limiter 4-position lock
- 3:1 back-to-seat tilt ratio
- 360° swivel
- Pneumatic cylinder height adjustment

Exclusively on Acclaim and Luna.



Z1 SIMPLE WEIGHT-BALANCED

- Automatic tension adjustment
- 12° recline or upright tilt lock
- 360° swivel
- Pneumatic cylinder height adjustment

Exclusively on Mila.

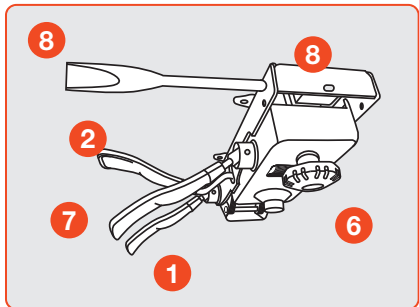


Z2 SIMPLE WEIGHT-BALANCED

- Automatic tension adjustment
- 9° recline or upright tilt lock
- 360° swivel
- Pneumatic cylinder height adjustment

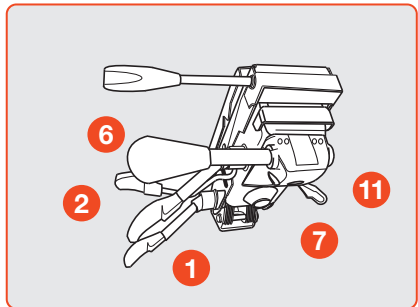
Exclusively on Omnia.

MULTI-FUNCTION



M1 MULTI-FUNCTION

- Infinite back angle adjustment
- 6° forward tilt
- Center knob tension adjustment
- 360° swivel
- Pneumatic cylinder height adjustment



M2 HEAVY DUTY MULTI-FUNCTION

- Weight capacity up to 500 lbs.
- Integrated seat slider
- Infinite back angle adjustment
- 6° forward tilt
- Side knob tension adjustment
- 360° swivel
- Pneumatic cylinder height adjustment

Exclusively on Logic Plus.

controls by series

	B1 B2 B3	P1	S2 S3	R1 R2 R3	K2 K3	Y1	Y2	Y3
	Basic	Posture Tilt	Swivel Tilt	Rocking Tilt	Knee Tilt	Simple Synchro	Heavy Duty Synchro Tilt	Full Synchro
Acclaim							✓	✓
Agent	✓	✓	✓	✓			✓	
Agent Stools	✓	✓						
Aria						Mid-back High-back		Mid-back
Aria Stools						Mid-back		
Bella Task	✓		✓					
Bella Stools	✓							
Bristol			✓	✓			✓	
Bristol Stools		✓						
Core					✓			
Core Stools								
Cortina			✓				✓	
Cosmo								
Cydia			✓		✓			
Cydia Stools			✓					
Dash	✓		✓	✓				
Diddy	✓		✓	✓				
HAG Capisco				✓				
HAG Capisco Puls				✓				
Jax Side				✓				
Lilly Side				✓				
Logic	Low-back	Low-back	✓	✓			✓	
Logic Stools	Low-back	Low-, Mid-back						
Logic Plus								
Luna						✓		✓
Luna Stools						✓		
Mila								
Neo Lite						✓		✓
Neo Lite Stools						✓		
Neo						✓		✓
Neo Stools						✓		
Omnia								
Omnia Stools								
Remy	✓							
Sol								
Strata							✓	
Strata Stools							✓	
Strata Lite						✓		
Strata Lite Stools						✓		
Theory						✓	✓	✓
Theory Stools						✓		
Vault					✓	✓		✓
Vault Stools						✓		
Vesta								
Vesta Stools								
Vox	✓		✓	✓				
Zoom Task	✓							
Zoom Stools	✓							

controls by series

	Y4	Y5	Y6	X1 X2	W1	W2	Z1 Z2	M1 M2
	Intensive Synchro	Enhanced Synchro w/ Back Angle Adjustment	Deluxe Synchro	Dynamic Synchro	Weight Balanced Synchro	Advanced Weight Balanced Synchro	Simple Weight Balanced	Multi-function
Acclaim		✓				✓		
Agent								✓
Agent Stools								
Aria	High-back							
Aria Stools								
Bella Task								
Bella Stools								
Bristol								✓
Bristol Stools								
Core		✓			✓			
Core Stools					✓			
Cortina								✓
Cosmo				✓				
Cydia								
Cydia Stools								
Dash								
Diddy								
HAG Capisco								
HAG Capisco Puls								
Jax Side								
Lilly Side								
Logic								✓
Logic Stools								
Logic Plus								✓
Luna					✓	✓		
Luna Stools								
Mila							✓	
Neo Lite								
Neo Lite Stools								
Neo					✓			
Neo Stools								
Omnia							✓	
Omnia Stools							✓	
Remy								
Sol			✓					
Strata								
Strata Stools								
Strata Lite	✓							
Strata Lite Stools								
Theory								
Theory Stools								
Vault								
Vault Stools								
Vesta				✓				
Vesta Stools				✓				
Vox								
Zoom Task								
Zoom Stools								

Bases

		List Price
BA1B	26" Nylon - Black	\$75
BA1HD	26" Heavy Duty Nylon (Logic Plus) - Black	\$100
BA2B/S/P	26" Aluminum - Black, Silver, Polished	\$100
BA2S/P	26" Aluminum - Silver, Polished	\$100
BA9B/G/W	26" High-Profile Nylon - Black, Gray, White	\$75
BA10B/S/P	26" High-Profile Aluminum - Black, Silver, Polished	\$100
BA11B/G	27" Mid-Profile Nylon - Black, Gray	\$75
BA12S	27" Mid-Profile Aluminum - Silver, Polished	\$100
BA14P	26" Aluminum Four-Star - Polished	\$100
BA16B/P	27" Mid-Profile Aluminum - Polished	\$100
BA19P	27" Aluminum (Cortina) - Polished	\$100
BA21B/S/W	26" Aluminum (HÅG Capisco & HÅG Capisco Puls) - Black, Silver, White	\$155
BA36S	27" Mid-Profile Aluminum (Sol) - Silver, Polished	\$100
BA36P	27" Mid-Profile Aluminum (Sol)	\$100
Lilly Counter Frame	ST24 Frame Only - Black, Silver	\$190
Lilly Bar Frame	ST30 Frame Only - Black, Silver	\$210
FR18	18" Foot Ring (HÅG Capisco & HÅG Capisco Puls)	\$165
FR20	20" Foot Ring	\$90
JB1	Jury Base - Standard	\$300
JB2	Jury Base - Quick Release	\$675
JB2-PLT	Ramp Insert for JB2	\$100
P-KIT-FST8	Fixed Foot Ring Base and Casters	\$150

Cylinders

CY16	3" Lift	\$30
CY17A	Auto-Return (Cydia)	\$30
CY18	4" Lift	\$30
CY19	5" Lift	\$30
CY19H	5" Lift	\$30
CY20	5" Lift	\$30
CY20N	No Lift	\$30
CY24	5" Lift	\$30
CY24N	No Lift	\$30
CY30	8" Lift	\$30
CY36	10" Lift	\$30
CY9N	No Lift, Free Swivel (Lilly 9131/9134, Jax 9236/9231/9234)	\$30
CY9NA	No Lift, Auto-Return (Lilly 9131/9134, Jax 9236/9231/9234)	\$50
CY23	5.1" Lift (HÅG Capisco and HÅG Capisco Puls)	\$85
CY29	6.9" Lift (HÅG Capisco and HÅG Capisco Puls)	\$85
CY30	8" Lift (Vox and Dash)	\$30
CY36	10.5" Lift (Vox and Dash)	\$30
CY37	9.5" Lift (HÅG Capisco and HÅG Capisco Puls)	\$85

Headrests

		List Price
Vault Headrest - M2 or M4		\$85
Aria Headrest - M2 or M4		\$85
Theory Headrest - Upholstered		\$85
Strata Headrest - Upholstered		\$120
Vesta Headrest - M1		\$150

Accessories

DL5	Stacking Cart	\$275
BRK	Book Rack (Shuttle)	\$70
GC1	Ganging Clip	\$30
GC2	Ganging Clip	\$30
GC5	Ganging Clip	\$20
GC7	Ganging Clip	\$30
GC8	Ganging Clip	\$30
PS	Petite Seat on Logic	\$50
BT	Bolt (B2, S2)	\$15
BN1/BN2	Upholstered Back w/Ballistic Nylon (Logic, Shuttle)	\$35
AW1	4" Arm Width Adjustment Bracket (A4, A6, A8, A36)	\$25

Arm Pads

Please note that each arm pad is sold individually, not as a set of two.
Some parts require a left or right specification.

ARM-P8000-101/102	Compatible with Sophie. Specify Black or Gray.	\$50
ARM-PAD22-101	Compatible with Core A22.	\$30
ARM-PAD28-L/R01	Compatible with Vesta A28, A29. Specify L or R.	\$50
ARM-PAD30-ASR/L	Compatible with Vesta A30. Specify L or R.	\$50
ARM-PAD33-L/R01	Compatible with Cosmo A33. Specify L or R.	\$30
ARM-PAD38-R/L01-V2	Compatible with Cosmo A38. Specify L or R.	\$30
ARM-PAD40-101	Compatible with A40.	\$30
ARM-PAD41-AS1	Compatible with A41.	\$30
ARM-PAD47L/R-P33	Compatible with Mila. Specify L or R.	\$30
ARM-PADA4-101	Compatible with A4, A5, A90.	\$20
ARM-PADA6-101	Compatible with A6, A7.	\$30
ARM-PADA8-101	Compatible with A8, A9.	\$25

Controls

MEC-B0010-101	B1 Basic Task	\$50
MEC-B0020-101	B2 Basic Task with Depth Adjustment	\$50
MEC-P0010-101	P1 Posture Back	\$80
MEC-S0020-101	S2 Swivel Tilt with Back Depth Adjustment	\$60
MEC-S0030-101	S3 Swivel Tilt	\$60
MEC-R0010-101	R1 Rocking Tilt	\$70
MEC-R0020-000	R2 Rocking Tilt for Lounge and Guest	\$80
MEC-R0030-101	R3 Rocking Tilt	\$250
MEC-K0020-101-V5	K2 Advanced Knee Tilt	\$140
MEC-K0030-101	K3 Advaned Knee Tilt	\$140
MEC-Y0010-101	Y1 Simple Synchro Tilt	\$70
MEC-Y0020-101	Y2 Heavy Duty Synchro Tilt	\$130
MEC-Y0030-101	Y3 Full Synchro Tilt	\$90
MEC-Y0040-101	Y4 Intensive Synchro	\$160
MEC-Y0050-101-V2	Y5 Deluxe Synchro Tilt	\$170
MEC-Y0060-101	Y6 Deluxe Synchro Tilt	\$180
MEC-X0020-101	X2 Dynamic Synchro Tilt	\$160
MEC-W0010-101	W1 Weight-Balanced Synchro Tilt	\$120
MEC-W0020-101	W2 Advanced Weight-Balanced Synchro Tilt	\$140
MEC-M0010-101	M1 Multi-Function	\$140
MEC-M02HD-101	M2 Heavy Duty Multi-Function	\$240

product options

HEAVY DUTY SEATING

	Aria	Bristol	Logic	Logic Plus	Luna	Strata	Theory	Shuttle Bariatric	Sophie Bariatric
Models	1880-Y4 1885-Y4	2360-Y2 2380-Y2	1760-Y2 1760-M1 1780-Y2 1780-M1	1790-M2	3460-Y3	1560-Y2 1580-Y2	2160-Y2 2180-Y2	1250-GT	8119-GT
Weight Capacity	350 LBS.	350 LBS.	350 LBS.	500 LBS.	350 LBS.	350 LBS.	350 LBS.	600 LBS.	500 LBS.
Warranty	10 YEARS MULTI-SHIFT	10 YEARS MULTI-SHIFT	10 YEARS MULTI-SHIFT	10 YEARS SINGLE-SHIFT	10 YEARS MULTI-SHIFT	10 YEARS MULTI-SHIFT	10 YEARS MULTI-SHIFT	LIFETIME SINGLE-SHIFT	LIFETIME SINGLE-SHIFT

TASK SEATING OPTIONS

	Agent	Aria	Bristol	Core	Cydia	HÅG Capisco	HÅG Capisco Puls	Logic	Luna	Neo	Neo Lite	Sol	Strata	Strata Lite	Theory	Vault	Vesta
Back Size																	
One Size				✓		✓	✓		✓	✓	✓	✓					✓
Low-Back	✓					✓		✓									
Mid-Back	✓	✓	✓		✓			✓					✓	✓	✓	✓	
High-Back		✓	✓		✓			✓					✓	✓	✓	✓	
Back Material																	
Mesh Back		✓			✓				✓	✓	✓	✓	✓	✓	✓	✓	✓
Upholstered Back	✓		✓	✓	✓	✓		✓				✓					
Plastic Back							✓										
Seat Material																	
Mesh Seat					✓								✓	✓	✓		✓
Upholstered Seat	✓	✓	✓	✓	✓	✓	✓	✓	✓	✓	✓	✓	✓	✓	✓	✓	✓
Models																	
Task Chair	✓	✓	✓	✓	✓	✓	✓	✓	✓	✓	✓	✓	✓	✓	✓	✓	✓
Task Stool	✓	✓	✓	✓	✓	✓	✓	✓	✓	✓	✓		✓	✓	✓	✓	✓
Guest Chair					✓				✓				✓				
Lumbar																	
Height & Depth Adjustable													Standard	Standard			
Height Adjustable		Optional			Optional				Optional	Standard	Standard	Standard			Standard		
Ratchet Back	P1, R1, M1, Y2 Standard		Standard	Standard		Standard	Standard	P1, R1, M1, Y2 Standard							Standard	Standard	
Frame Colors																	
Black		✓		PBK	PBK	BF	BF		PBK	PBK	PBK		BF	BF	✓	✓	BF
Dove Gray				PDG					PDG								
Graphite Gray					PGG					PGG	PGG						
Silver						SF	SF					SF	SF				
White					PWH	WF	WF			PWH	PWH						
Polished Aluminum												PF					PF

MESH SELECTION

	M01	M1	M2	M3	M4	KIP MESH	OMNIA MESH
Aria			✓		✓		
Bella		✓		✓			
Clary		✓	✓	✓	✓		
Cosmo		✓	✓	✓	✓		
Cydia		✓		✓			
Kip						✓	
Link		✓					
Luna			✓		✓		
Luna Side			✓		✓		
Mila			✓		✓		
Neo				✓	✓		
Neo Lite				✓			
Omnia							✓
Shuttle		✓	✓	✓	✓		
Sol			✓		✓		
Strata	✓						
Strata Lite	✓						
Theory		✓		✓			
Vault			✓		✓		
Vesta		✓					
Zoom				M32 & M33			

Glide Code/Name/Price	Load Rating	Surfaces	Chairs
 G1 ^{\$30} STATIONARY BASE GLIDE	110 LBS.	ALL SURFACES EXCEPT HARD FLOORS	
 G8 ^{\$20} SWIVEL STEEL GLIDE	150 LBS.	CARPET	JAX, LILLY, SHUTTLE
 G9 ^{\$20} SWIVEL NYLON GLIDE	150 LBS.	ALL SURFACES	JAX, LILLY, SHUTTLE
 G10 ^{\$20} SWIVEL FELT GLIDE	110 LBS.	ALL SURFACES EXCEPT CARPET, CONCRETE, AND TILE	JAX, LILLY, SHUTTLE
 G16 ^{\$15} SLED BASE CLEAR PLASTIC GLIDE	90 LBS.	ALL SURFACES EXCEPT CARPET, VCT, AND WOOD	KELLEY, JAX WIRE, LILLY STOOL, LILLY WIRE
 G17 ^{\$25} SLED BASE CLEAR PLASTIC GLIDE	90 LBS.	ALL SURFACES EXCEPT CARPET, CONCRETE, AND TILE	KELLEY, JAX WIRE, LILLY STOOL, LILLY WIRE
 G18 ^{\$15} DOME GLIDE	125 LBS.	CARPET, HARD FLOORS	JAX, LILLY, SHUTTLE
 G19 ^{\$15} TAPERED PLASTIC GLIDE	125 LBS.	CARPET, HARD FLOORS	CLARY, LUNA
 G19S ^{\$20} SWIVEL STEEL GLIDE	125 LBS.	CARPET	CLARY, LUNA
 G19N ^{\$20} SWIVEL NYLON GLIDE	125 LBS.	ALL SURFACES	CLARY, LUNA
 G19F ^{\$20} SWIVEL FELT GLIDE	125 LBS.	ALL SURFACES EXCEPT CARPET, CONCRETE, AND TILE	CLARY, LUNA
 G21 ^{\$20} TAPERED PLASTIC GLIDE	125 LBS.	CARPET, HARD FLOORS	DASH, VOX
 G21S ^{\$20} SWIVEL STEEL GLIDE	125 LBS.	CARPET	DASH, VOX
 G21N ^{\$20} SWIVEL NYLON GLIDE	125 LBS.	ALL SURFACES	DASH, VOX
 G21F ^{\$20} SWIVEL FELT GLIDE	125 LBS.	ALL SURFACES EXCEPT CARPET, CONCRETE, AND TILE	DASH, VOX

BIFMA Ultimate Test for Fit (UTFF)

Ergonomics - The Work Chair

The Business and Institutional Furniture Manufacturer’s Association (BIFMA) has developed the following guidelines for UTFF. Parenthetical numbers following each item indicate corresponding subdivisions in the guidelines.

Seat Height (7.1)

Users should be able to sit with their feet comfortably on the floor or footrest without undue pressure on the underside of the thighs. The thigh-to-torso angle should not be less than 90°.

Seat Depth (7.2)

Users should be able to sit in the chair without undue pressure against the back of the knees, their back properly supported by the backrest and with adequate buttock and thigh support.

Seat Width (7.3)

The seat should be wider than the hip breadth of the user with allowance for movement and clothing. The seat width should not limit the ability to use the armrests comfortably.

Seat Pan Angle (7.4)

This should allow users to support their feet on the floor or footrest. They should not cause the user’s torso-to-thigh angle to be less than 90°. Forward seat pan angles should not cause users to shift excessive weight to their feet or experience the sensation of sliding out of the chair.

Back Support (7.5)

Seat Backrest Height (7.5.1)
All backrests should provide adequate support and buttocks clearance. For tasks requiring upper body mobility, the backrest should not interfere with the user’s movement. For users who prefer reclining postures or greater upper back support, the back height should provide support for the shoulder blades.

Backrest Width (7.5.2)
The width of the backrest should provide adequate support for the curvature of the user’s back without causing localized pressure points. .

Lumbar Support (7.5.3)
The height and shape of the lumbar should coincide with the lumbar curve (“the small”) of the user’s back. The support should be firm, but not cause localized pressure points.

Movements of the Seat Pan and Back Support (7.6)

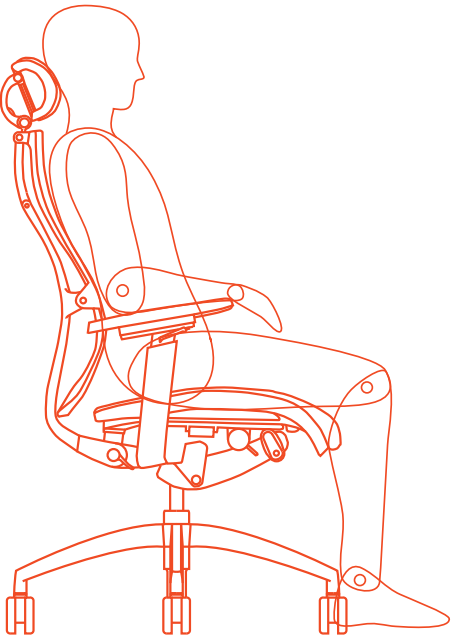
The user should be able to sit in a position where the torso-to-thigh angle is equal to or greater than 90°. The seat and backrest angles should accommodate the varying postures assumed by the user throughout the day.

Arm Support (7.7)

Armrest Height (7.7.1)
This should allow users to sit in a variety of postures while supporting their forearms and/or elbows in a manner that avoids lifting the shoulders (armrests too high) or leaning to the side to reach the armrest (armrests too low). The armrest height should allow accessibility to, and performance of, tasks.

Armrest Length (7.7.2)
The length of the armrest should allow users to sit close enough to the work surface to perform their tasks while maintaining contact with the backrest.

Inside Distance Between Armrests (7.7.3)
Armrests should allow users to sit in a variety of postures while supporting their forearms in a manner that avoids lifting the shoulders and/or excessive outward positioning of the elbows. Armrests should allow accessibility to, and performance of, tasks. The inside distance between the armrests should allow the user to enter and exit the chair easily. The hips should comfortably fit between the armrests or supports.



care and maintenance

- Ensure the gas cylinder is inserted into the control firmly. Improper connection may cause wobbling.
- Choose correct casters for different floor surfaces. We suggest choosing hard floor casters for tile or concrete surfaces.
- For drafting stool use, we recommend self-locking casters for hard floors. See Caster Guide for more details.
- Do not stand on foot ring.
- Do not sit on any part of the chair except the seat. Do not sit on arms or backrest.
- To avoid chair collapse, do not remove knobs or screws.
- Properly dispose of packing materials. Do not use plastic as head covering. It may cause suffocation.
- If any parts are missing, broken, damaged or worn, do not use the chair until repairs are made using factory-authorized parts.
- Do not attempt to make any alterations to chair.
- Do not use chair on uneven floor surfaces.
- Do not drape coats or sweaters on back of chairs with casters. Hanging fabric may suddenly stop casters from rolling.
- Do not use excessive speed when moving the chair with casters while seated.
- Do not overexert the functions of a chair which are only to be used under normal conditions.
- Do not stand on and/or use this chair as a stepladder. Use this product only for seating one person at a time.
- Do not use this chair unless all bolts, screws and knobs are firmly secured.

Check the following at 4 month intervals;

- All exposed fasteners should be checked and any loose fasteners tightened. Use appropriate tools. Replace any fasteners that appear to be damaged in any way.
- The chair mechanism should be checked for any looseness, excessive wear or signs of damage. Immediately remove the chair from service if any damage or failure is found.
- The base and casters should be checked for any signs of excessive wear for failure. Immediately replace any parts that show such wear or failure.

notes

notes

A large grid of small dots for taking notes. The grid is composed of 20 columns and 30 rows of dots, totaling 600 dots. The dots are arranged in a uniform pattern, providing a guide for writing notes.