



Prices effective October 3, 2022

Published April 2023

Thrive™ Portfolio

| | |
|--|---------------|
| Introduction | page 2 |
| Thrive™ Portfolio | 3 |
| Technology Support | 5 |
| Power and Data Support | 113 |
| Screens | 177 |
| Personal Lighting | NOC |
| Occasional Lighting | NOC |
| Work Tools | 229 |
| Ubi® Work Tools | 229 |
| Formwork | 266 |
| Work Tools | 275 |
| Indices | 293 |
| By Name | 293 |
| By Number | 297 |
| Appendices | |
| 20-Day or Less/Assigned Lead-Time Order Information | |
| Customer's Own Material Order Information-Workspaces | |
| Proprietary Textiles Application Chart-Workspaces | |
| Proprietary Textile Colors-Workspaces | |
| For the latest materials information, refer to the Materials pages on HermanMiller.com. | |

Introduction

A Note on the Organization of This Book

There are a few signals that will help you understand the organization of this book. Once you know them, you should be able to find your way around easily.

Like a newspaper, this book is formatted with columns of text and illustrations that run vertically.

Information wraps from one column to the next and continues for as many pages as it needs to.

Black bars are clues.

A black bar at the top of a page signals the start of information about a product.

This information is divided into two sections, each signaled by a black bar. Product Information includes a description, additional notes, and dimensional drawings. Specification Information, which always begins at the top of a column, includes a series of steps. Each step represents a decision you need to make in order to complete your product number. Steps must be followed sequentially. The number of pages needed to complete information on a product varies; some will be complete in one page; others may fill three or four pages. Just continue going through the steps until you run into the next product, signaled by the black bar at the top of the page.

Black tabs running along the outside edge of the page help you locate what section you are in or what section you want to go to. You can thumb forwards or backwards to find a section; tabs and text appear on both sides of the page.

The additional pages in the back of the book include the appendices and indices. They are signaled by a long black bar running along the outside edge of the page.

The index is presented two ways.

The first index is in alphabetical order by product name. It can be helpful if you are new to the products and numbering scheme or if you are looking for a type of product, such as work chair or round table.

The second index is by product number. It lists, in alphanumeric order, the base product number, typically a five-digit number.

General Information

This book is effective October 3, 2022, subject to change without notice. Products may be purchased from authorized Herman Miller dealers who will quote prices upon request. For more information about our products and services or to see a list of dealers, visit www.HermanMiller.com.


All prices are list prices. Additional services, such as planning services, design, storage, and installation, are not included and must be added to these prices when the additional services are requested.


Illustrations, specifications, and prices are based on the latest information at the time of publication. The right is reserved to make changes at any time without notice in prices, fabrics, finishes, materials, specifications, and models, and also to discontinue models and finishes.

Dimensions shown in the drawings are engineering drawing dimensions rounded up to the nearest 1/8". Product is shipped set up or knocked down. Products that include "Shipped knocked down" in the description require some assembly. If this statement does not appear in the description, the product is shipped assembled.

Service problems are normally handled by a Herman Miller authorized dealer. Where this cannot be accomplished on a local level, service problems should be referred to the Customer Care Representative for your region, Herman Miller, Inc., Zeeland, Michigan 49464.

20-Day or Less/Assigned Lead-Time Shipments

All products and options in this price book not designated by an Assigned Program icon  will ship in **20 business days or less** after being acknowledged by Herman Miller.

Products and options designated by an  are on the assigned lead-time program and may ship in 20 days, less than 20 days, or more than 20 days from order acknowledgement.

Technology Support

Power and Data Support

Screens

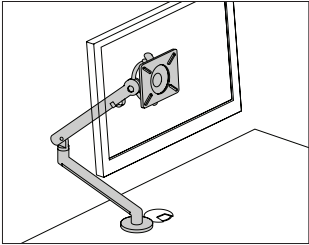
Personal Lighting

Occasional Lighting

Work Tools



Flo® Single-Screen Monitor Arm Y91171 Support



Product Information

Description

This easy to move, slim profile monitor arm assembly supports a single flat panel monitor. It has a 13 1/4" height-adjustment range, a 20 5/8" extension range, and allows the monitor to tilt 40° upward and -40° downward. The arm includes a quick-disconnect feature that allows easy installation and removal of a monitor. It has integrated cable management along the underside of the arm, and a visual indicator that shows the arm's tension setting. The arm meets VESA 75mm and 100mm standards (Video Electronic Standards Association - Mounting Interface Standards). A hex key for adjusting the arm's tension is included.

Notes

Wall mount option (WM) does not include hardware to mount bracket to wall. For Compass™ applications, see wall mount installation instructions.

White finish (OJ) is available only with the surface clamp (CM) option.

Accommodates monitor weights ranging from 7 to 20 lbs.

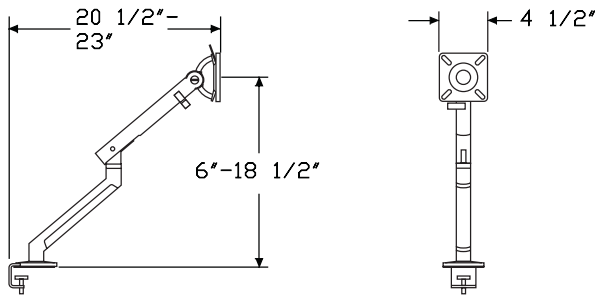
To hold a laptop computer, order Ollin laptop and tablet mount (Y95011.) separately.

Through-surface mount (T1 and T1S) options include 1 bolt for mounting to surfaces up to 1 3/8" thick.

Through-surface mount (T2 and T2S) options include 1 bolt for mounting to surfaces up to 3" thick.

Rail tile mount attachment bracket (RTM) is also compatible with Ethospace® rail tiles.

Dimensions



Specification Information

Step 1.

Y91171.

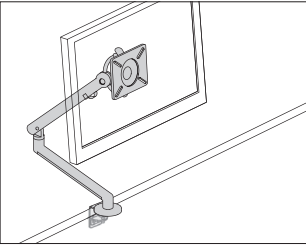
| Step 2. Attachment Bracket | |
|----------------------------|---|
| T1 | through-surface mount, up to 1 3/8" thick A |
| T2 | through-surface mount, up to 3" thick |
| CM | surface clamp |
| LPC | low profile clamp, up to 1" thick |
| RTM | rail tile mount (Canvas) |
| RPM | Resolve® pole mount |
| WM | wall mount A |
| LOC | Locale® through surface mount A |
| GR | grommet mount A |
| LSR | Layout Studio performance rail A |
| T1S | through-surface mount with rotation stop, up to 1 3/8" thick |
| T2S | through-surface mount with rotation stop, up to 3" thick |

| Prices for Steps 1-2. | |
|-----------------------|-------|
| Y91171. T1 | \$452 |
| T2 | \$452 |
| CM | \$453 |
| LPC | \$453 |
| RTM | \$450 |
| RPM | \$593 |
| WM | \$588 |
| LOC | \$483 |
| GR | \$582 |
| LSR | \$461 |
| T1S | \$486 |
| T2S | \$486 |

| Step 3. Finish | |
|--|-------------|
| <i>For through-surface mount, up to 1 3/8" thick (T1), through-surface mount, up to 3" thick (T2), surface clamp (CM), Layout Studio performance rail (LSR), through-surface mount with rotation stop, up to 1 3/8" thick (T1S), or through-surface mount with rotation stop, up to 3" thick (T2S)</i> | |
| OI | silver +\$0 |
| OJ | white +\$0 |

| | |
|--|-------------|
| <i>For low profile clamp, up to 1" thick (LPC), rail tile mount (Canvas) (RTM), Resolve® pole mount (RPM), wall mount (WM), Locale® through surface mount (LOC), or grommet mount (GR)</i> | |
| OI | silver +\$0 |

Flo® Single Screen Monitor Arm Y91182 Bulk Pack



Product Information

Description

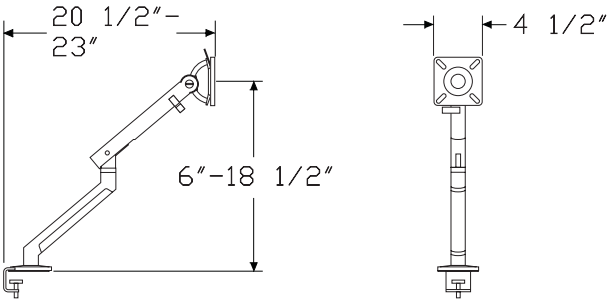
This bulk pack assembly contains 10 Flo® monitor arms (Y92090.) and 10 two-piece clamp mounts (Y92092.) of specified finish. The easy to move, slim profile monitor arm supports a single flat panel monitor. It has a 13 1/4" height-adjustment range, a 20 5/8" extension range, and allows the monitor to tilt 40° upward and -40° downward. The arm includes a quick-disconnect feature that allows easy installation and removal of a monitor. It has integrated cable management along the underside of the arm, and a visual indicator that shows the arm's tension setting. The VESA attachment bracket provides 75mm and 100mm hole patterns. VESA attachment hardware included.

Notes

Monitor arm accommodates monitor weights ranging from 7 to 20 lbs. Bulk pack includes 1 instruction booklet and 1 hex key for adjusting the arm's tension.

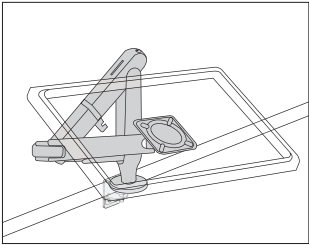
To hold a laptop computer or tablet, order Ollin laptop and tablet mount (Y95011.) separately.

Dimensions



| Specification Information | | |
|----------------------------|------------------------------|--------|
| Step 1. | | |
| Y91182. A | | |
| Step 2. Attachment Bracket | | |
| CM | surface clamp A | |
| Prices for Steps 1-2. | | |
| Y91182. CM | | \$4394 |
| Step 3. Finish | | |
| 0I | silver A | +\$0 |
| 0J | white | +\$0 |

Ollin Single-Screen Monitor Arm Y95111 Support



Product Information

Description

This monitor arm utilizes a technical cord which allows it to support monitors weighing up to 20 pounds. The arm provides 14½" of vertical height adjustment, 24" of horizontal extension, and +80/-10° of tilt. A visual indicator shows the arm tension setting, and an integrated cable management system secures cables neatly along the arm. This monitor arm is user adjustable without tools. VESA brackets provide both 75mm and 100mm hole patterns. Bracket attachment hardware included.

Notes

Assembly includes the Ollin single screen monitor arm - arm only (Y95000.) and the specified attachment bracket.

Accommodates monitor weights ranging from 0-20 pounds.

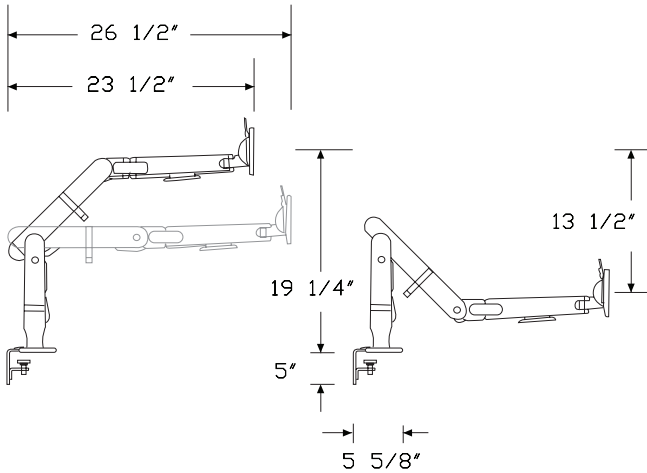
To hold a laptop computer, order Ollin laptop and tablet mount (Y95011.) separately.

White (O) finish is available only with surface clamp (CM).

Through-surface mount (T1 and T1S) options include 1 bolt for mounting to surfaces up to 1⅜" thick.

Through-surface mount (T2 and T2S) options include 1 bolt for mounting to surfaces up to 3" thick.

Dimensions



Specification Information

Step 1.

Y95111.

Step 2. Configuration

1 single

Step 3. Attachment Bracket

CM surface clamp

LPC low profile clamp, up to 1" thick

LOC Locale® through surface mount

T1 through-surface mount, up to 1⅜" thick A

T2 through-surface mount, up to 3" thick

T1S through-surface mount with rotation stop, up to 1⅜" thick

T2S through-surface mount with rotation stop, up to 3" thick

| Prices for Steps 1-3. | | | | | | |
|-----------------------|-------|-----|-----|-----|-----|------------|
| | CM | LPC | LOC | T1 | T2 | T1S |
| Y95111. 1 | \$505 | 505 | 535 | 504 | 504 | 538 |
| | | | | | | T2S |
| Y95111. 1 | | | | | | \$538 |

Step 4. Finish

For surface clamp (CM), through-surface mount, up to 1⅜" thick (T1), through-surface mount, up to 3" thick (T2), through-surface mount with rotation stop, up to 1⅜" thick (T1S), or through-surface mount with rotation stop, up to 3" thick (T2S)

| | | |
|-----------|--------|-------|
| 0I | silver | +\$0 |
| 0J | white | +\$0 |
| 0H | black | +\$20 |

For Locale® through surface mount (LOC)

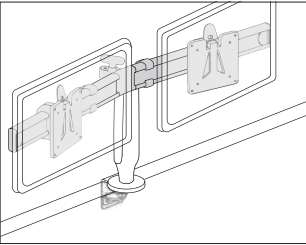
| | | |
|-----------|--------|------|
| 0I | silver | +\$0 |
|-----------|--------|------|

For low profile clamp, up to 1" thick (LPC)

| | | |
|-----------|--------|------|
| 0I | silver | +\$0 |
|-----------|--------|------|

Ollin Dual Bar

Y95122



Product Information

Description

This dual mount bar attaches 2 monitors to an Ollin® monitor arm. The bar holds 2 monitors from 17" to 27" wide and ranging in weight from 0-8 pounds each. A knob allows for tilting of the monitors and an integrated cable management system secures cables neatly along the bar and arm. This dual mount bar is user adjustable without tools. Monitors attach to arm in a fixed orientation. For individual screen portrait-landscape rotation and tilt, 2 individual Ollin arm assemblies are recommended. VESA brackets and attachment hardware included.

Notes

Specify this dual mount bar to convert an Ollin Single to an Ollin Dual. Order 1 of the following monitor arms separately:

- Ollin single-screen monitor arm support with desired attachment (Y95111.1xxx), or
- Ollin single-screen monitor arm-arm only (Y95000.) with additional desired attachment method.

Order monitor arm clamp separately.

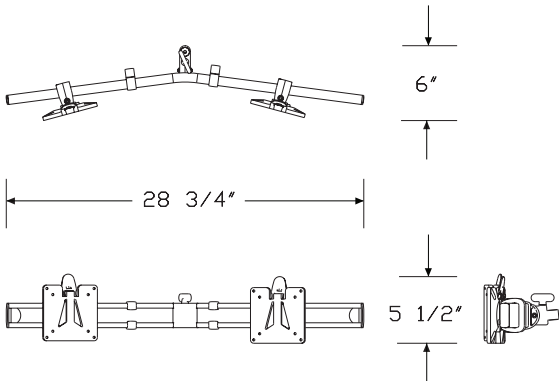
75mm and 100mm VESA compliant. VESA brackets provide both 75mm and 100mm hole patterns.

Through-surface mount (T2) option includes 2 bolts: 1 for mounting to surfaces up to 1 3/8" thick, and 1 for mounting to surfaces up to 2 3/4" thick.

Through-surface mount (T2) option can be grommet mounted. Order cast grommet (Y92050.) separately.

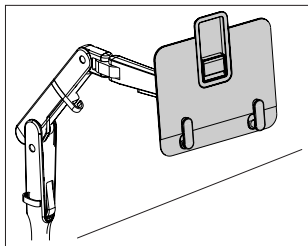
Supports monitors ranging in weight from 0-8 pounds each.

Dimensions



| Specification Information | | |
|---------------------------|---------|-------|
| Step 1. | | |
| Y95122. | A | \$402 |
| Step 2. Finish | | |
| 0H | black A | +\$0 |

Ollin Laptop and Tablet Mount Assembly Y95112



Product Information

Description

This laptop and tablet mount lifts notebook computers and tablets off the work surface at an appropriate work height and attaches to an Ollin® or Flo® monitor arm. For use with Flo monitor arm, this assembly includes a weight plate that provides additional weight required for optimal performance of the arm when the laptop/tablet weighs less than 3.5 lbs. (1.6 kg). Mount attaches to a monitor arm with a 100mm VESA pattern. It supports laptops up to 16" screen size and up to 1" thick. It supports tablets from 9³/₄" to 13" screen size. It can be used in both single- and dual-screen applications. Laptops and tablets are held securely to the mount's anti-slide surface by 2 adjustable ratcheting feet. Retaining feature adds stability to position tablets.

Notes

Mount accommodates device weights up to 6.2 lbs. (2.8 kg).

Mount supports laptops up to 16" screen size and up to 1" thick.

Thickness includes base and lid of laptop combined.

Mount supports tablets from 9³/₄" to 13" screen size.

Requires 100mm VESA plate (provided with the monitor arm).

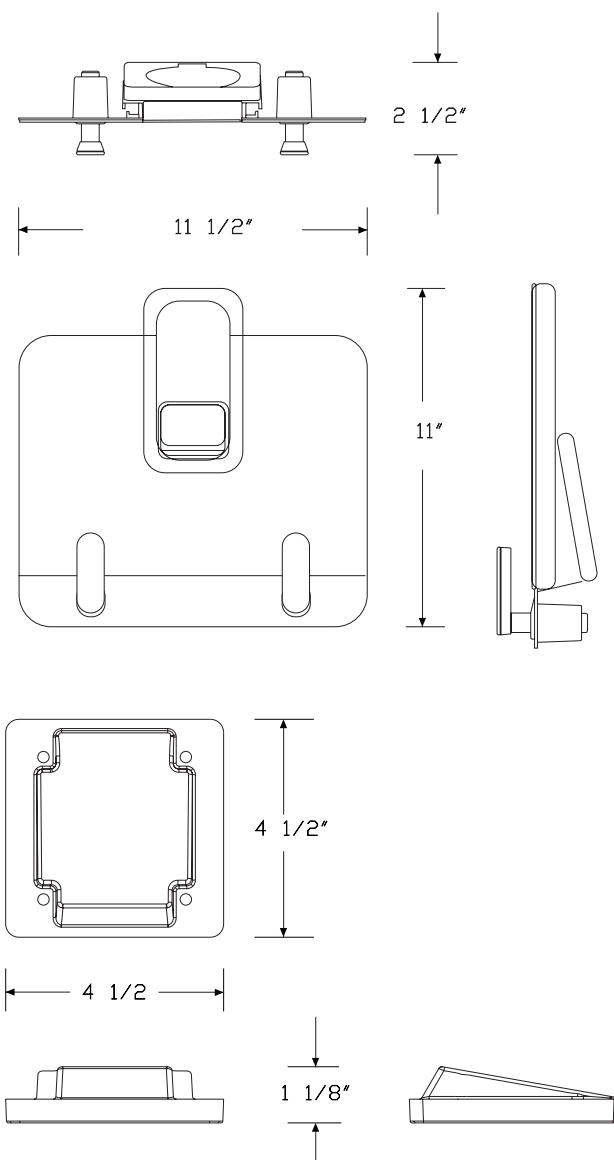
Order 1 of the following monitor arms separately:

- Ollin single-screen monitor arm support (Y95111.)
- Flo single-screen monitor arm support (Y91171.)

For use with Flo monitor arm, this assembly includes a weight plate that provides additional weight required for optimal performance of the arm when the laptop/tablet weighs less than 3.5 lbs. (1.6 kg).

For use with devices 3.5 lbs. (1.6 kg) or greater, weight plate is not required. Order Ollin laptop and tablet mount (Y95011.) instead.

Dimensions



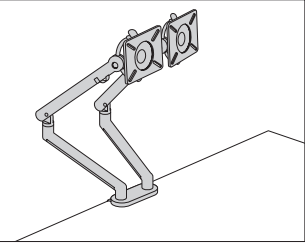
Weight Plate for use with Flo Monitor Arm

Ollin Laptop and Tablet Mount
Assembly *continued*

Thrive™ Technology Support

| Specification Information | | |
|------------------------------------|--|-------|
| Step 1. | | |
| Y95112. <input type="checkbox"/> A | | |
| Step 2. Monitor Arm Type | | |
| OL | ollin monitor arm <input type="checkbox"/> A | |
| FL | flo monitor arm <input type="checkbox"/> A | |
| Prices for Steps 1-2. | | |
| Y95112. OL | | \$159 |
| FL | | \$239 |
| Step 3. Finish | | |
| OI | silver <input type="checkbox"/> A | +\$0 |
| OJ | white <input type="checkbox"/> A | +\$0 |
| OH | black <input type="checkbox"/> A | +\$0 |

Flo® Dual-Screen Monitor Arm - Y91175 Clamp Mount



Product Information

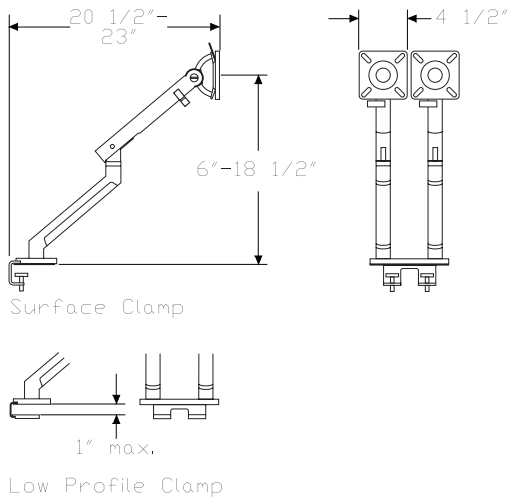
Description

A variant of the award winning Flo monitor arm, this elegant solution supports 2 monitor screens each weighing up to 20lbs. It has a 13 1/4" height-adjustment range, a 20 5/8" extension range, and allows the monitor to tilt 40° upward and -40° downward. Both arms include a quick-disconnect feature that allows easy installation and removal of a monitor. It has integrated cable management along the underside of the arm, and a visual indicator that shows the arm's tension setting. The VESA attachment plate provides both 75mm and 100mm hole patterns. The clamp is top mounted to speed installation. An allen wrench for adjusting the arm's tension is included. Attachment hardware is included.

Notes

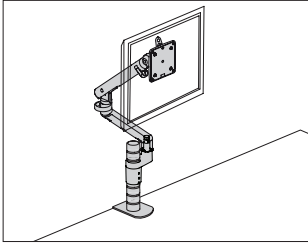
Accommodates monitor weights ranging from 7 to 20 lbs. each.

Dimensions



| Specification Information | | |
|----------------------------|--|-------|
| Step 1. | | |
| Y91175. | | |
| Step 2. Attachment Bracket | | |
| CM | surface clamp mount | |
| LPC | low profile clamp, up to 1" thick A | |
| Prices for Steps 1-2. | | |
| Y91175. CM | | \$917 |
| LPC | | \$917 |
| Step 3. Finish | | |
| 01 | silver | +\$0 |

Flo® Modular Monitor Arm Assembly Y91180



Product Information

Description

This scalable monitor arm assembly includes a Wishbone® post, 1 or 2 dynamically adjustable Flo® monitor arms, 1 or 2 Flo modular brackets, and an attachment bracket that mounts the assembly to a surface. The Flo monitor arm provides 13¹/₄" of vertical height adjustment, 20⁵/₈" of horizontal extension and +/- 40° of tilt. A visual indicator shows the arm tension setting, and an integrated cable management system secures cables neatly along the underside of the arm. The VESA bracket provides both 75mm and 100mm hole patterns, and hardware is included to attach the VESA brackets to monitors. An installation and tension adjustment tool is included.

Notes

Accommodates monitor weights ranging from 7 to 20 lbs. each.
100mm and 75mm VESA compliant.

Use low profile clamp for work surfaces up to 1" thick.

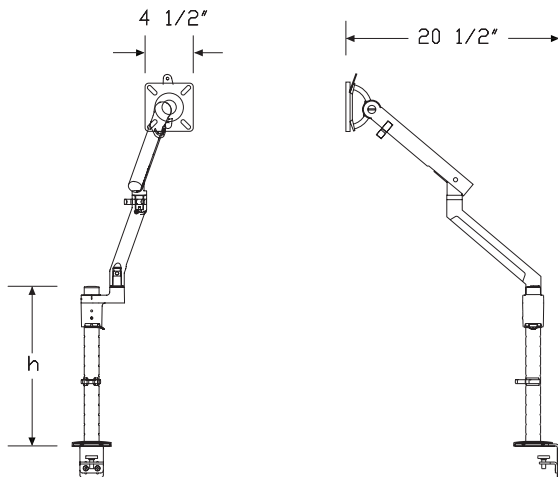
Use Locale® through surface mount for Locale.

For adding additional arms, order both of the following products separately:

- Flo modular bracket-bracket only (Y92103.)
- Flo single screen monitor arm-arm only (Y92090.)

For added stability, specify Wishbone high load clamp (WHC).

Dimensions



Specification Information

Step 1.

Y91180. A

Step 2. Post Height

07 7⁷/₈" high A
15 15³/₄" high A
19 19³/₄" high A

Step 3. Number of Arms

For 7⁷/₈" high (07)

1 1 arm A

For 15³/₄" high (15)

1 1 arm A
2 2 arms A

For 19³/₄" high (19)

1 1 arm A
2 2 arms A

Step 4. Attachment Bracket

NN no attachment bracket A
T2 through-surface mount, up to 2³/₄" thick A
CM surface clamp mount A
LPC low profile clamp, up to 1" thick A
LOC Locale® through surface mount A
GR grommet mount A
WHC high load clamp mount for Wishbone® post A
LSR Layout Studio performance rail A

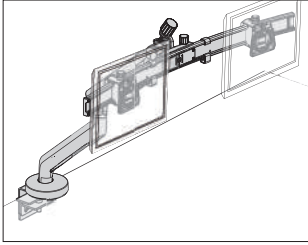
Prices for Steps 1-4.

| | | NN | T2 | CM | LPC | LOC | GR | | |
|----------------|-------------|--------|------|------|------|------|------|------------|------------|
| Y91180. | 07 1 | \$540 | 575 | 624 | 624 | 571 | 670 | | |
| | 15 1 | \$569 | 604 | 653 | 653 | 600 | 699 | | |
| | 2 | \$1014 | 1049 | 1098 | 1098 | 1045 | 1144 | | |
| | 19 1 | \$575 | 610 | 659 | 659 | 606 | 705 | | |
| | 2 | \$1020 | 1055 | 1104 | 1104 | 1051 | 1150 | | |
| | | | | | | | | WHC | LSR |
| Y91180. | 07 1 | | | | | | | \$669 | 635 |
| | 15 1 | | | | | | | \$700 | 664 |
| | 2 | | | | | | | \$1143 | 1109 |
| | 19 1 | | | | | | | \$704 | 670 |
| | 2 | | | | | | | \$1149 | 1115 |

Flo® Modular Monitor Arm
Assembly *continued*

| | | |
|----------------|---------------------------------------|------|
| Step 5. Finish | | |
| 01 | silver <input type="text" value="A"/> | +\$0 |

Flo® X Monitor Arm - Assembly Y91195



Thrive™ Technology Support

Product Information

Description

Flo® X is the latest evolution of high-load monitor support from Colebrook Bosson Saunders, capable of holding heavy and large screens, including curved monitors, as well as dual and triple monitors. Its dual spring technology accommodates heavy monitors and can be configured for a lower weight range (down to 7 lbs./3 kg), if required. A visual indicator shows the arm's tension setting, saving time for multiple installations. An integrated cable management system secures cables neatly along the underside of the arm. Hex key for installing and tensioning the monitor arm is included.

Flo X single configuration supports monitors up to 40 lbs. (18 kg) and offers up to 24.09" (612 mm) of horizontal extension, 21.14" (537 mm) of vertical reach and +30°/-10° of monitor tilt. Single configuration also offers portrait-to-landscape screen adjustment.

Flo X dual configuration holds 2 monitors up to 32" and offers up to 27.91" (709 mm) of horizontal extension, 20.83" (529 mm) of vertical reach and +20°/-5° of monitor tilt.

Flo X triple configuration holds 3 monitors up to 27" and offers up to 31.06" (789 mm) of horizontal extension, 20.83" (529 mm) of vertical reach and +20°/-5° of monitor tilt.

Notes

Multi-mount handle (HL) option is highly recommended for use with dual and triple configurations to facilitate easy movement of monitors.

75 mm and 100 mm VESA compliant.

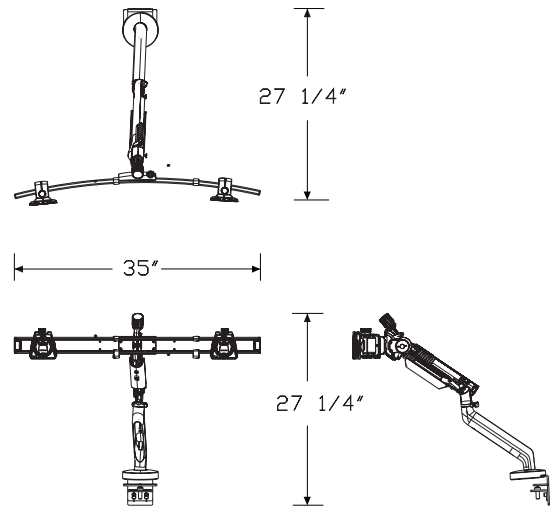
For single screen configuration (Y91195.1), monitor weight range is 7-40 lbs. (3-18 kg).

For dual screen configuration (Y91195.2), monitor weight range is 2-18 lbs. (1-8 kg) per screen.

For triple screen configuration (Y91195.3), monitor weight range is 2-11 lbs. (1-5 kg) per screen.

For total mounted load below 20 lbs. (9 kg), arm should be configured to single-spring mode.

Dimensions

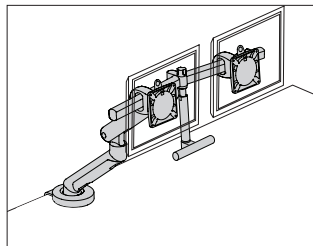


Flo® X Monitor Arm - Assembly

continued

| Specification Information | | |
|--|--|--------|
| Step 1. | | |
| Y91195. <input type="text" value="A"/> | | |
| Step 2. Configuration | | |
| 1 | 1 monitor <input type="text" value="A"/> | |
| 2 | 2 monitors <input type="text" value="A"/> | |
| 3 | 3 monitors <input type="text" value="A"/> | |
| Step 3. Handle Option | | |
| For 1 monitor (1) | | |
| NN | no handle <input type="text" value="A"/> | |
| For 2 monitors (2) or 3 monitors (3) | | |
| HL | with handle <input type="text" value="A"/> | |
| NN | no handle <input type="text" value="A"/> | |
| Step 4. Attachment Bracket | | |
| CM | clamp mount <input type="text" value="A"/> | |
| Prices for Steps 1-4. | | |
| | | CM |
| Y91195. 1 | NN | \$723 |
| 2 | HL | \$1043 |
| | NN | \$932 |
| 3 | HL | \$1217 |
| | NN | \$1106 |
| Step 5. Finish | | |
| OI | silver <input type="text" value="A"/> | +\$0 |

Flo® Plus Monitor Arm Assembly Y91174



Product Information

Description

This heavy duty version of the award-winning Flo® monitor arm is available in either single or dual monitor configuration. Flo Plus single configuration supports monitors ranging in weight from 20 to 33 pounds, offers up to 22¹/₄" of horizontal extension, 13" of vertical adjustability and +52°/-6° of monitor tilt. Flo Plus dual configuration supports monitor load from 20 to 40 pounds in total, offers up to 25³/₄" of horizontal extension, 12³/₈" of vertical adjustability and +35°/-36° of monitor tilt. A visual indicator shows the arm's tension setting, and an integrated cable management system secures cables neatly along the underside of the arm. The VESA bracket provides both 75mm and 100mm hole patterns.

The single assembly features a tilt action and portrait-to-landscape rotation, each with adjustable friction. The recommended monitor size for single configuration is 43" maximum diagonal screen size.

The dual assembly supports monitors of maximum 22" width, approximately 24" diagonal screen size. Each monitor arm has an independent tilt feature that minimizes glare.

Notes

75mm and 100mm VESA compliant.

Allen wrench for installing and tensioning the monitor arms included.

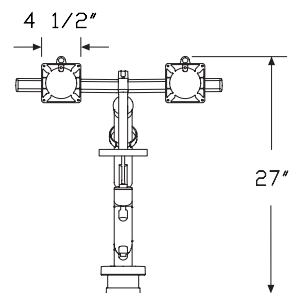
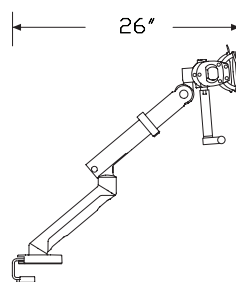
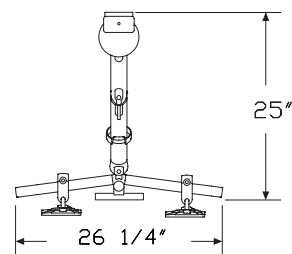
Flo Plus head for single configuration comes in black finish only.

Hardware to attach VESA brackets to monitors included.

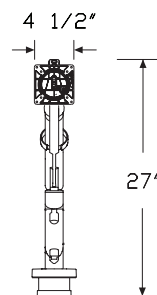
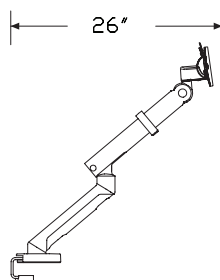
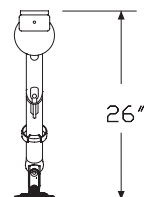
Monitor weight range for Flo Plus, single (Y91174.1) is 20-33 pounds.

Monitor weight range for Flo Plus, dual (Y91174.2) is 20-40 pounds in total for both monitors.

Dimensions



Dual



Single

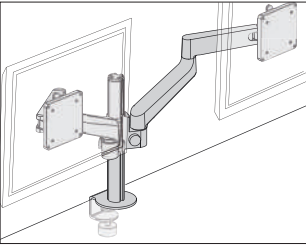
Flo® Plus Monitor Arm Assembly

continued

| Specification Information | | |
|---------------------------|---------------------------------|-------|
| Step 1. | | |
| Y91174. A | | |
| Step 2. Configuration | | |
| 1 | flo plus, single A | |
| 2 | flo plus, dual | |
| Step 3. Attachment Method | | |
| CM | clamp mount | |
| Prices for Steps 1-3. | | |
| | | CM |
| Y91174. 1 | | \$722 |
| 2 | | \$961 |
| Step 4. Finish | | |
| 0I | silver | +\$0 |

Lima Monitor Arm Assembly

Y97211



Product Information

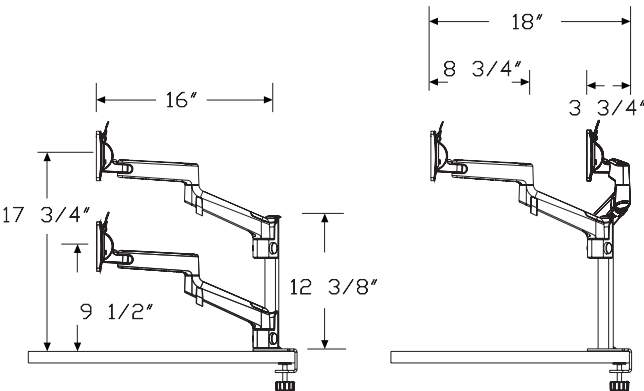
Description

This monitor arm assembly includes a 12³/₄" post with integrated clamp attachment, and 1 or 2 adjustable Lima monitor arms. The Lima arm provides 8" of push button vertical height adjustment, 18" of horizontal extension and +80°/-10° of tilt. An integrated 3-point cable management system secures cables along the underside of the arm. The VESA bracket provides both 75mm and 100mm hole patterns, and hardware is included to attach the VESA brackets to monitors.

Notes

- Accommodates monitor weights up to 14 pounds each.
Maximum diagonal screen size width in dual monitor setup is 27".
Integrated post clamp attachment has thumbscrew adjustment.
For adding up to 1 additional arm (for a total of 2 arms), order the following product separately:
- Lima expansion monitor arm-arm only (Y97212.)
- Finish for post is predetermined by arm finish choice:
- Arm Finish—Post Finish
- Silver (OI)—Silver post and clamp
- White (OJ)—Silver post and clamp
- Black (OH)—Black post and clamp

Dimensions



Specification Information

Step 1.

Y97211. A

Step 2. Post Type

L lima post with integrated clamp A

Step 3. Number of Arms

1 1 arm A

2 2 arms A

Step 4. Attachment Bracket

LC clamp mount lima post A

Prices for Steps 1-4.

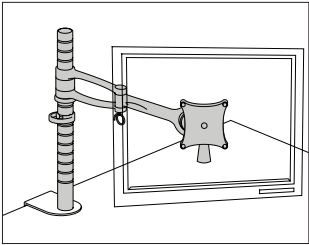
| | | | LC |
|---------|---|---|-------|
| Y97211. | L | 1 | \$301 |
| | | 2 | \$493 |

Step 5. Finish

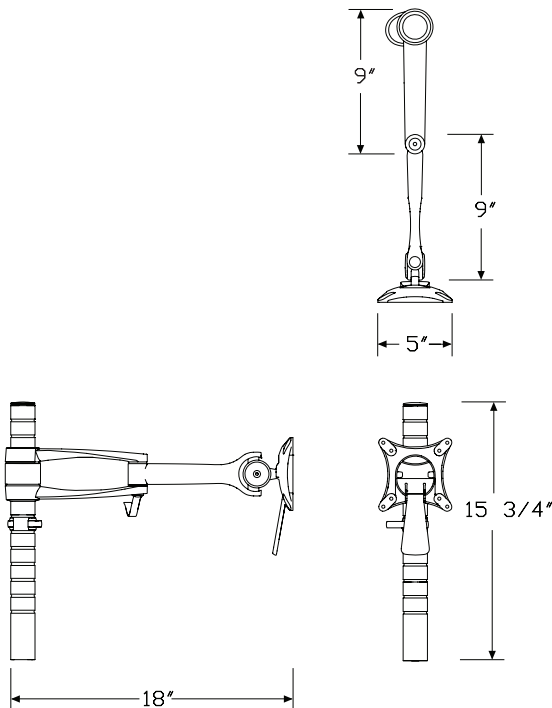
| | | | |
|----|--------|----------------|------|
| OH | black | A | +\$0 |
| OI | silver | A | +\$0 |
| OJ | white | A | +\$0 |

Wishbone® Single-Screen
Monitor Arm Assembly

Y91011

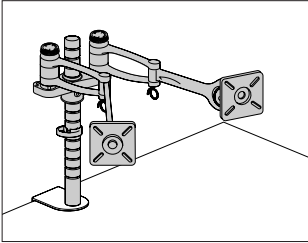


| Product Information |
|--|
| Description |
| This monitor arm assembly supports a single flat panel monitor and includes a 15 ³ / ₄ " post, monitor arm, and attachment bracket for a variety of mounting options. The Wishbone® post option includes a monitor arm location ring, a cable management clip, and an extension stud. The monitor arm has a quick release monitor attachment, and allows the monitor to be positioned as landscape or portrait. It has 100° vertical tilt, and 180° horizontal movement. Attachment hardware included. |
| Notes |
| Maximum monitor weight is 26 lbs. |
| Grommet mount option (GR) accommodates surfaces up to 1 ¹ / ₂ " thick. |
| Clamp mount options accommodate surfaces between 1/2" and 2 ⁵ / ₈ " thick. |
| This product was designed by Colebrook Bosson Saunders Products Ltd. |
| Dimensions |



| Specification Information |
|---|
| Step 1. |
| Y91011. |
| Step 2. Post Type |
| W wishbone post |
| Step 3. Attachment Bracket |
| For wishbone post (W) |
| NN no attachment bracket |
| GR grommet mount |
| WC clamp mount for wishbone post |
| T1 through-surface mount, up to 1 ³ / ₈ " thick |
| T2 through-surface mount, up to 2 ³ / ₄ " thick |
| LOC Locale® through surface mount A |
| LSR Layout Studio performance rail A |
| Prices for Steps 1-3. |
| Y91011. W |
| Y91011. W |
| Y91011. W |
| Step 4. Finish |
| OI silver |

Wishbone® Dual-Screen Monitor Arm Assembly Y91012



Product Information

Description

This monitor arm assembly supports 2 flat panel monitors and includes a 15¾" post, 2 monitor arms with back-to-back post bracket, and an attachment bracket for a variety of mounting options. The Wishbone® post option includes a monitor arm location ring, a cable management clip, and an extension stud. The monitor arms have a quick release monitor attachment, and allow the monitors to be positioned as landscape or portrait. They have 100° vertical tilt, and 180° horizontal movement.

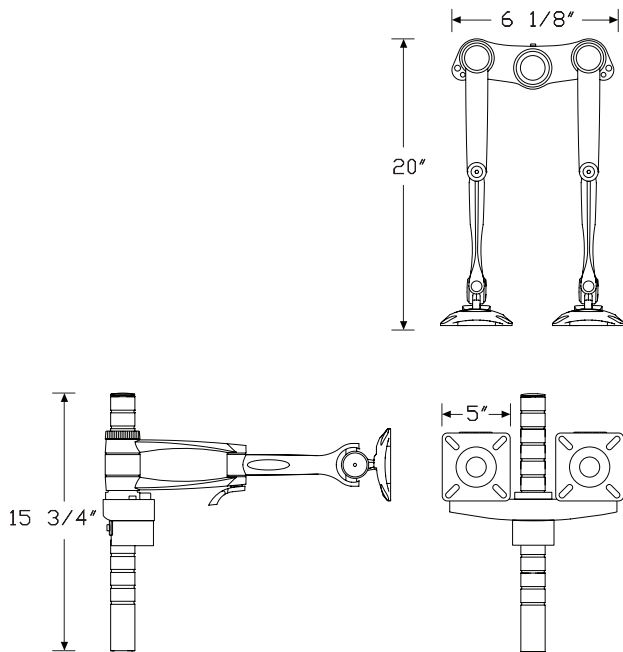
Notes

Maximum monitor weight is 26 lbs. per monitor arm.

Grommet mount option (GR) accommodates surfaces up to 1½" thick. Clamp mount options accommodate surfaces between ½" and 2⅝" thick.

This product was designed by Colebrook Bosson Saunders Products Ltd.

Dimensions



Specification Information

Step 1.

Y91012.

Step 2. Post Type

W wishbone post

Step 3. Attachment Bracket

For wishbone post (W)

NN no attachment bracket

GR grommet mount

WC clamp mount for wishbone post

T1 through-surface mount, up to 1⅜" thick

T2 through-surface mount, up to 2¾" thick

LOC Locale® through surface mount ☐

LSR Layout Studio performance rail ☐

Prices for Steps 1-3.

| | NN | GR | WC | T1 | T2 | LOC |
|------------------|-------|------|------|-----|-----|-----|
| Y91012. W | \$943 | 1073 | 1027 | 972 | 978 | 974 |

LSR

Y91012. W \$1038

Step 4. Finish

01 silver +\$0