

# Turnout Gear

## RETAIL PRICE LIST

(PRICES EFFECTIVE: FEBRUARY 01, 2023)



**LION®**  
ready for action



Please join us in supporting the  
National Fallen Firefighters Foundation.  
Visit [www.firehero.org](http://www.firehero.org) to learn more.

## HIGH-PERFORMANCE FIREFIGHTER TURNOUTS

## **BENEFIT FROM LION'S QUALITY PROCESS**

Throughout its 100-year plus history, LION has dedicated itself to providing quality products and services to its valued customers. Quality doesn't just happen by talking about it — it takes quality people using a quality process. That's why LION went through the expense and effort to become ISO 9001 registered and to maintain that certification.

## **A REAL COMMITMENT TO QUALITY PRODUCTS AND SERVICES**

What does ISO 9001 registration mean? ISO is short for the International Organization for Standardization. It promotes the development of standards, testing and certification to encourage the real *commitment* to quality products and services. In order for a company to become registered as an ISO 9001-compliant firm, it must pass a strict evaluation of its product development, manufacturing, quality and documentation processes by a qualified independent third-party registrar. It is analogous to Underwriters Laboratory certifying the performance of protective clothing to NFPA Standards. Registration certifies compliance to the quality process based on observed evidence as opposed to the performance testing of a garment. The audits are rigorous, inflexible and are conducted on a "follow-up" inspection basis, as well.

## **CONSISTENCY AND RELIABILITY IN EVERY STEP**

ISO 9001 registration is proof-positive that LION is committed to continuous improvement of all procedures relating to meeting customer expectations. The process requires LION to formalize and document each and every step by which they design and manufacture protective clothing, and the processes used to respond to complaints, questions, suggestions and ... of course ... the occasional error. The result is consistency and reliability in every step of every piece of protective clothing. Each garment is cut and sewn the same way and the customer gets the same product regardless of who performed the work.

## **RESPONSIVE TO CUSTOMER CONCERNS**

Because it covers the design process, ISO 9001 is a more stringent registration. It requires the manufacturer to listen to customer feedback and take action. LION has a Quality Review Board that meets regularly to formally review customer feedback. A team member is assigned the responsibility of investigating the concern or suggestion from a customer and recommending a course of corrective action.

The process also requires LION's suppliers to be accountable by documenting their quality criteria and the corrective actions taken in case a material or product fails the criteria.

LION Customer Support  
customersupport@lionprotects.com  
1-800-421-2926

Email Orders To:  
ordersupport@lionprotects.com

LION  
CERTIFIED TO ISO 9001: 2015  
10001779 QM15

IsoDri® Moisture Management Systems .....	4
Turnout Outer Shell Descriptions .....	5
Turnout Liner System Descriptions .....	6
<b>LION Turnout Overview</b> .....	7
V-Force® Bi-Swing Coat – IsoDri .....	8
V-Force Coat – IsoDri .....	9
V-Force Belted Pants – IsoDri .....	10
V-Force Ultra Low-Rise Belted Pants – IsoDri .....	11
V-Force High-Back Pants – IsoDri .....	12
V-Force Lumbar Pants – IsoDri .....	13
RedZone Contaminant Control Package and RedZone Particulate Blocking Hood .....	14
Super-Deluxe™ Coat – IsoDri and non-IsoDri .....	15
Super-Deluxe Pants – IsoDri and non-IsoDri .....	16
Liberty™ Coat and Pants – non-IsoDri .....	17
Traditional Series Coat and Pants – non-IsoDri .....	18
<b>Turnout Gear Options</b> .....	19
Trim Patterns .....	20
Custom Lettering .....	21-22
Magnetic Closure Options .....	23-26
V-Force Options .....	27-33
LION Turnout Options .....	34-39
Pockets .....	
<b>Proximity Gear</b> .....	40
Aero Super-Deluxe Coat and Aero Super-Deluxe Pants .....	41
<b>Turnout Gear Accessories</b> .....	46-43
Suspenders .....	
<b>Measuring Guide</b> .....	44
<b>Compatibility and Proper Fit</b> .....	45
<b>Instructions for Measuring Turnout Gear</b> .....	46-47
<b>2023 LION Customer Policies — Terms/Warranty</b> .....	48-51

**Note:** All prices shown are suggested retail list, USD.

# IsoDri® Moisture Management Systems

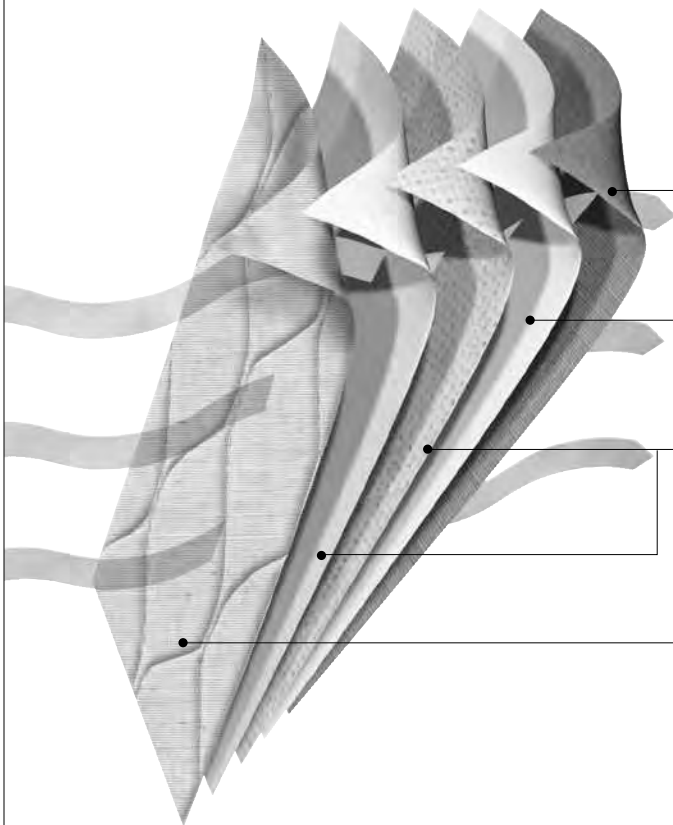
## Less weight and faster drying means more comfort

When you're wearing SCBA and dragging a fully charged 1 3/4" hose line, the last thing you need is your gear sucking up water and adding more weight to what you're already lugging around. Because IsoDri Moisture Management Systems sheds water, you're working lighter and more comfortably.

And, how many times have you had to work in wet and clammy turnout gear because it hadn't dried from an earlier run? Firefighters wearing gear with IsoDri Moisture Management Systems report their gear has been dry and comfortable in less than 30 minutes.

### How IsoDri Works

IsoDri is more than just an outer shell that resists water penetration and absorption. It is a complete system of components (outer shell, moisture barrier, thermal barrier and wristlets) that works together to reduce the water in your turnout gear and the dangers that water presents.



Outer shell is treated with durable water repellent finish to reduce moisture intake from outside sources such as hose water and rain.

Moisture barrier allows body heat, in the form of vapor, to escape, but keeps liquid out.

Thermal barrier is treated with a durable water repellent finish to shed moisture generated by the body and maintain high thermal performance. Apertured AraFlo® promotes air permeability to allow vapor released by the body to be more easily transported away from the skin.

Face cloth wicks perspiration away from the body. Filament face cloth enhances lubricity and comfort.

## RETAIL PRICE LIST

Effective February 1, 2023  
Price subject to change without prior notice



# Turnout Outer Shells

DuPont™  
**Nomex** | DuPont™  
**Kevlar**

## Outer Shell Criteria

The outer shell probably has the most demanding role in the total configuration of a turnout. It has two critical functions: to resist ignition from direct flame impingement and to protect the internal layers from rips, tears, slashes, abrasion, etc. Some outer shell materials can have modest impact on TPP tests or can resist water absorption better than others. However, the real test of an outer shell material is its ability to maintain its protective qualities under high thermal loads and its ability to stand up to the rough-and-tumble life on the fireground.

## Outer Shell Descriptions



### **PBI Max™ 6.0 oz/yd² /PBI Max 7.0 oz/yd²**

A blend of 70% PBI® Dominant PBI/Kevlar® spun yarns and 30% 600 denier (400 denier for 6.0 oz/yd²) Kevlar filament for high levels of abrasion and tear resistance. PBI Max is woven in a twill weave for flexibility and comfort. Includes a durable water repellent finish. Available in natural and black.



### **PBI Max™ LP™ 6.0 oz/yd²**

70% PBI LP/Para-Aramid spun yarns and 30% 400 denier DuPont Kevlar filament. Utilizing the new PBI LP Fiber, PBI Max™ LP™ is woven in a comfort twill with filament twill technology. PBI Max LP is lighter weight, but consists of stronger molecular bonds for better dimensional stability, increased flame resistance and better break open protection than PBI Max.



### **Flex 7™ 6.9 oz/yd²**

A 6.9 oz/yd² PBI/Para-Aramid twill weave with ENFORCE technology. Available in Natural and Black.



### **Armor AP™**

A blend of 65% Kevlar and 35% Nomex® (80% Nomex/Kevlar spun yarns and 20% Kevlar filament yarns). Armor AP is constructed of a 6.5 oz/yd² comfort twill with filament twill technology weave for improved comfort/flexibility, strength/durability and protection. Available in gold, khaki and black, Armor AP fabric includes a durable water repellent finish. (Khaki color contains Nomex/Kevlar/Teijinconex® spun yarns.)



### **Pioneer™**

A 6.6 oz/yd² Nomex/Kevlar twill weave with ENFORCE technology. Available in gold, black or khaki with a Super Shelltite™ finish for good water resistance.



### **Advance®**

60% Kevlar/40% Nomex blend fabric in a 7.0 oz/yd² ripstop weave for added strength. Available in gold, yellow and black with a Super Shelltite finish for good water resistance.

### **Nomex® Essential**

Available in a 7.5 oz/yd² plain weave construction in a variety of colors, as well as undyed natural (off-white). A workhorse fabric with excellent resistance to rips, tears and abrasion. Nomex Essential has lower thermal stability under extreme temperatures than many other outer shells because it contains a lower percentage of Kevlar, the “muscle fiber” in most turnout gear.

## Thermal Enhancement System

### **SemperDri™ Thermal Enhancement**

SemperDri employs a special durable water repellent finish treated thermal lining material to reduce absorption, so the fabric stays drier and lighter. SemperDri material is used in the lower 9" of the legs of the turnout pants, in the waterwells of the coat sleeves and in the shoulder/yoke area of the coat liners. In comparative field tests, garments using the SemperDri system were noticeably lighter in weight after structural firefighting activities and training exercises involving high volumes of water.

## RETAIL PRICE LIST

Effective February 1, 2023  
Price subject to change without prior notice



# Turnout Liner Systems

DuPont™  
**Nomex** | DuPont™  
**Kevlar**

**Traditional Liner System** — Moisture barrier and thermal liner sewn together.

**Separable Liner System** — Thermal liner and moisture barrier attach to each other with a combination of zippers and hook and loop. Makes inspection, cleaning, repair and/or replacement easier. Available exclusively on LION custom turnout coat and pants models.

**Vented Moisture Barrier** — Features a circumferential opening at the torso mid-section with two-inch overlap and bartack reinforcements. The vented moisture barrier increases heat loss performance while maintaining thermal and moisture protection. Available exclusively on LION custom turnout coat models.

## Liner Descriptions

### 1st Digit - Thermal Liner Code 2nd Digit - Moisture Barrier Code

**isodri**

#### **C4**

Glide Ice™ face cloth quilted to 1.5 oz. AraFlo® Dri. 5.0 oz. Nomex®/Kevlar® Spunlace Dri and 1.5 oz AraFlo Dri, Stedair 4000/ Nomex pajama check laminated membrane.

**isodri**

#### **C6**

Glide Ice face cloth quilted to 1.5 oz. AraFlo Dri. 7.0 oz. CROSSTECH® 3-Layer. Nomex Essential woven pajama check substrate and a woven liner laminated to a PTFE membrane. 3.0 oz. Nomex Essential Chambray Dri face cloth.

**isodri**

#### **C7**

Glide Ice face cloth quilted to 1.5 oz. AraFlo Dri. 5.0 oz. CROSSTECH black. Nomex Essential woven pajama check substrate laminated to a PTFE membrane. 3.0 oz. Nomex Essential Chambray Dri face cloth.

**isodri**

#### **K3**

Glide Ice face cloth quilted to 2.3 oz. Nomex/Kevlar Spunlace Dri and 1.5 oz AraFlo Dri, Stedair 3000 PTFE laminated to E89™.

**isodri**

#### **K4**

Glide Ice face cloth quilted to 2.3 oz. Nomex/Kevlar Spunlace Dri and 1.5 oz AraFlo Dri, Stedair 4000/Nomex pajama check laminated membrane.

**isodri**

#### **K6**

Glide Ice face cloth quilted to 2.3 oz. Nomex/Kevlar Spunlace Dri and 1.5 oz. AraFlo Dri. 7.0 oz. CROSSTECH 3-Layer. Nomex Essential woven pajama check substrate and a woven liner laminated to a PTFE membrane.

**isodri**

#### **K7**

Glide Ice face cloth quilted to 2.3 oz. Nomex/Kevlar Spunlace Dri and 1.5 oz. AraFlo Dri. 5.0 oz CROSSTECH black. Nomex Essential woven pajama check substrate laminated to a PTFE membrane.

**isodri**

#### **K9**

Glide Ice face cloth quilted to 2.3 oz. Nomex/Kevlar Spunlace Dri and 1.5 oz. AraFlo Dri. 4.6 oz. Gore RT7100™ non-woven aramid laminated to a PTFE membrane.

**isodri**

#### **02 – PBI® G2**

Glide Ice face cloth quilted to 2-layers of 20% PBI/80% Nomex spunlace. 5.2 oz. Stedair Gold PBI/Nomex/Kevlar substrate laminated to a PTFE membrane.

**isodri**

#### **G0 – CenterCut Plus**

Glide Ice face cloth laminated to an enhanced bi-component ePTFE membrane. Meta-aramid/para-aramid three-dimensional non-woven batting laminated to an ePTFE film. 3 oz Meta-aramid Chambray Dri face cloth.

**isodri**

#### **N7 – Glide Ice with Nomex Nano**

Glide Ice facecloth quilted to one layer of 0.5 oz/sq/yd Dupont Nomex Nano and one layer of 2.3 oz. spunlace Nomex/Kevlar Spunlace CROSSTECH black. Nomex Essential woven pajama check substrate laminated to a PTFE membrane.

#### **D3**

Prism Pure™ face cloth quilted to 3.75 oz. virgin aramid/para-aramid batting, Stedair 3000 PTFE laminated to E89.

#### **D7**

Prism Pure face cloth quilted to 3.75 oz. virgin aramid/para-aramid batting. 5.0 oz. CROSSTECH black. Nomex Essential woven pajama check substrate laminated to a PTFE membrane.

#### **D9**

Prism Pure face cloth quilted to 3.75 oz. virgin aramid/para-aramid batting. Gore RT7100 PTFE laminated to 3.0 oz. non-woven aramid.

#### **J7**

Glide Ice face cloth quilted to 3.75 oz. virgin aramid/para-aramid batting. 5.0 oz. CROSSTECH black. Nomex Essential woven pajama check substrate laminated to a PTFE membrane.

#### **J9**

Glide Ice face cloth quilted to 3.75 oz. virgin aramid/para-aramid batting. Gore RT7100 PTFE laminated to 3.0 oz. non-woven aramid.

#### **M7**

Defender M face cloth (camo) quilted to 2-layers of flat Nomex/Kevlar Spunlace. 5.0 oz. CROSSTECH black. Nomex Essential woven pajama check substrate laminated to a PTFE membrane.

## RETAIL PRICE LIST

Effective February 1, 2023  
Price subject to change without prior notice

### The most technically advanced turnouts available

LION Turnouts and cutting-edge safety are synonymous. For decades, LION Turnouts has led the fight against firefighter stress by incorporating innovative design features and materials to deliver the most natural, least restrictive movement possible in Personal Protective Equipment.

### Standard features on most custom LION Turnouts

- Extra layer of SemperDri™ thermal protection added to yoke and shoulders of liner to help guard against compression from SCBA. SemperDri is also placed at the wrists of the coat and lower legs of the pants to reduce water absorption and keep working weight low.
- Ever-Dry™ Reach System reduces vulnerability to water, steam and flame. When you reach, full protection stays on your wrist.
- 42-stitch bartacks at all stress points for added durability.
- Reinforced cuffs, knees, shoulders and elbows for thermal protection and added wear life.
- Knees with water-resistant Lite-N-Dri™ FR water-resistant cushioning in shell and liner. Won't bind or pull when you're crawling, climbing, bending or kneeling.
- Three-inch contoured comfort collar.
- LION Firefighter Recovery Harness™ (Drag Rescue Device or "DRD").
- Liner Inspection System — Opening allows for complete liner inspection of coat and pants liners without opening seams.
- LION Ventilated Trim™ provides a conduit for the release of moisture vapor.

### Options

- Choice of outer shell fabric, thermal liner and moisture barrier.
- Separable liner system.
- Vented moisture barrier.
- Choice of coat and fly closure systems.
- Full selection of pockets and other custom options on coat and pants.
- Shoulders, elbows, knees and coat and pants cuffs reinforced with extra layer of outer shell fabric, polymer-coated aramid, or leather. Shoulders, elbows and knees are also available with extra padding.
- Men's and women's sizes.
- Choose from a variety of NFPA-approved trim patterns.
- LION Lumbar Support System provides adjustable support for the back when integrated into LION Turnouts Super Pants™ or V-Force® pants.
- LION Integrated Rescue Harnesses, LION Escape Belt and Personal Rescue Systems.
- Contoured throat tab.



## RETAIL PRICE LIST

Effective February 1, 2023  
Price subject to change without prior notice



# V-Force® Bi-Swing Coat

V-Fit® Design

**3M** Scotchlite®  
Reflective Material

DuPont™ Nomex® | DuPont™ Kevlar®



## Male Models CVBM-29, CVBM-305, CVBM-32, CVBM-335, CVBM-35 and CVBM-38\* Female Models CVBF-29 and CVBF-32

### Standard:

- Bi-swing back
- Self-fabric cuff, shoulder and elbow (with darts) reinforcements
- Thermoplastic zipper with hook and loop closure
- Ever-Dry™ Reach System with Wrist Shield™ System
- 8" over-the-hand Nomex®/Kevlar® IsoDri® wristlets
- 3" contoured comfort collar
- Drag Rescue Device (DRD)
- LION's exclusive SemperDri™ System
- Liner Inspection System

Fully compliant with NFPA 1971 and OSHA Standard 29CFR 1910.1030.

COAT CONSTRUCTION — Male Models CVBM-29, CVBM-305, CVBM-32, CVBM-335, CVBM-35 and CVBM-38* Female Models CVBF-29 and CVBF-32							
isodri	29"- 35" length coats. Pockets and trim NOT INCLUDED in prices	6.5 oz. Armor AP™ Black, Gold or Khaki	6.6 oz. Pioneer™ Gold, Black or Khaki	7.0 oz. PBI Max™ Natural/ 6.9 oz. Flex 7™ Gold**	7.0 oz. PBI Max™ Black/ 6.9 oz. Flex 7™ black**	6.0 oz. PBI Max LP Gold	6.0 oz. PBI Max LP Black
		\$1,530	\$1,530	\$1,889	\$2,014	\$2,014	\$2,129
<b>C4</b>	\$1,420	\$2,950	N/A	\$3,308**	\$3,434**	\$3,434	\$3,549
<b>C6</b>	\$1,901	\$3,431	N/A	\$3,789	\$3,915	N/A	N/A
<b>C7</b>	\$1,517	\$3,047	N/A	\$3,405**	\$3,531**	\$3,531	\$3,646
<b>K3</b>	\$1,238	\$2,768	\$2,768	\$3,126	\$3,252	N/A	N/A
<b>K4</b>	\$1,304	\$2,834	\$2,834	\$3,192**	\$3,318**	\$3,318	\$3,433
<b>K6</b>	\$1,757	\$3,287	N/A	\$3,645	\$3,771	N/A	N/A
<b>K7</b>	\$1,401	\$2,931	\$2,931	\$3,289**	\$3,415**	\$3,415	\$3,530
<b>K9</b>	\$1,238	\$2,768	\$2,768	\$3,126	\$3,252	N/A	N/A
<b>O2</b>	\$1,625	N/A	N/A	\$3,513**	\$3,639**	\$3,639	\$3,754
<b>G0</b>	\$1,551	\$3,081	N/A	\$3,439**	\$3,565**	\$3,565	\$3,680
<b>N7</b>	\$1,934	\$3,464	N/A	\$3,822	\$3,948	N/A	N/A

All above liner prices are for traditional liners. Outer shell includes the price of CSA709.

\*Additional fees apply. Call for quote.

\*\*Flex 7 certified composites.

**Separable Liner System:** Add \$188 to list price for coats. CROSSTECH® (codes 6 and 7) liners only.

**Vented Moisture Barrier for Coats:** Add \$50 to list price for codes 4, 2 and 7 liners and \$66 to list price for code 6.

See LION Catalog for full feature information; option parts can be found beginning on page 23 in this price sheet.

**IMPORTANT NOTE:** For NFPA and OSHA compliant garment, the outer shell and the liner system must be combined — add prices together for full garment, then add compliant trim pattern; recommended trim pattern is Viz-a-V™ (see page 19). LION recommends the V-Force Bi-Swing coat be worn with V-Force pants. The wearer must check the coat/pants overlap to assure adequate protection.

### V-Force Bi-Swing Coat Recommended Trim Pattern:



#### Viz-a-V Trim Pattern

Designed especially for the V-Force coat.  
Provides maximum visibility by taking  
advantage of the coat's unique cut.

### V-Force Bi-Swing Coat Recommended Pocket Option:



#### HP598 Handwarmer Pockets

9" x 9" x 2" semi-bellows and handwarmer  
combination pocket lined with SemperDri™.  
Has 6" opening on bellows side. Pocket flap  
is angled and features pull tab and pad for  
easy opening and access.

Fleece-lined version of pocket also  
available (HP604).



## RETAIL PRICE LIST

Effective February 1, 2023  
Price subject to change without prior notice



## V-Force® Coat

V-Fit® Design

**3M** Scotchlite™  
Reflective Material

DuPont™ Nomex® | DuPont™ Kevlar®



### Male Models CVFM-29, CVFM-305, CVFM-32, CVFM-335, CVFM-35 and CVFM-38\* Female Models CVFF-29 and CVFF-32

#### Standard:

- Self-fabric cuff reinforcements
- Self-fabric shoulder reinforcements
- Polymer-coated aramid elbow with a layer of Lite-N-Dri™ cushioning reinforcements, notched for natural flex
- Thermoplastic zipper with hook and loop closure
- Ever-Dry™ Reach System with Wrist Shield™ System
- 8" over-the-hand Nomex®/Kevlar® IsoDri® wristlets
- 3" contoured comfort collar
- Drag Rescue Device (DRD)
- LION's exclusive SemperDri™ System
- Liner Inspection System

Fully compliant with NFPA 1971 and OSHA Standard 29CFR 1910.1030.

COAT CONSTRUCTION — Male Models CVFM-29, CVFM-305, CVFM-32, CVFM-335, CVFM-35 and CVFM-38* Female Models CVFF-29 and CVFF-32							
isodri	29"- 35" length coats. Pockets and trim NOT INCLUDED in prices	6.5 oz. Armor AP™ Black, Gold or Khaki	6.6 oz. Pioneer™ Gold, Black or Khaki	7.0 oz. PBI Max™ Natural/ 6.9 oz. Flex 7™ Gold**	7.0 oz. PBI Max™ Black/ 6.9 oz. Flex 7™ black**	6.0 oz. PBI Max LP Gold	6.0 oz. PBI Max LP Black
		\$1,467	\$1,467	\$1,797	\$1,908	\$1,908	\$2,025
C4	\$1,420	\$2,887	N/A	\$3,217**	\$3,328**	\$3,328	\$3,445
C6	\$1,901	\$3,368	N/A	\$3,698	\$3,809	N/A	N/A
C7	\$1,517	\$2,984	N/A	\$3,314**	\$3,425**	\$3,425	\$3,542
K3	\$1,238	\$2,705	\$2,705	\$3,035	\$3,146	N/A	N/A
K4	\$1,304	\$2,771	\$2,771	\$3,101**	\$3,212**	\$3,212	\$3,329
K6	\$1,757	\$3,224	N/A	\$3,554	\$3,665	N/A	N/A
K7	\$1,401	\$2,868	\$2,868	\$3,198**	\$3,309**	\$3,309	\$3,426
K9	\$1,238	\$2,705	\$2,705	\$3,035	\$3,146	N/A	N/A
O2	\$1,625	N/A	N/A	\$3,422**	\$3,533**	\$3,533	\$3,650
G0	\$1,551	\$3,018	N/A	\$3,348**	\$3,459**	\$3,459	\$3,576
N7	\$1,934	\$3,401	N/A	\$3,731	\$3,842	N/A	N/A

All above liner prices are for traditional liners. Outer shell includes the price of CSA709.

\*Additional fees apply. Call for quote.

\*\*Flex 7 certified composites.

Separable Liner System: Add \$188 to list price for coats. CROSSTECH® (codes 6 and 7) liners only.

Vented Moisture Barrier for Coats: Add \$50 to list price for codes 4, 2 and 7 liners and \$66 to list price for code 6.

See LION Catalog for full feature information; option parts can be found beginning on page 23 in this price sheet.

**IMPORTANT NOTE:** For NFPA and OSHA compliant garment, the outer shell and the liner system must be combined — add prices together for full garment, then add compliant trim pattern; recommended trim pattern is Viz-a-V™ (see page 19). LION recommends the V-Force Bi-Swing coat be worn with V-Force pants. The wearer must check the coat/pants overlap to assure adequate protection.

#### V-Force Coat Recommended Pocket Option:



#### HP598 Handwarmer Pockets

9" x 9" x 2" semi-bellows and handwarmer combination pocket lined with SemperDri™. Has 6" opening on bellows side. Pocket flap is angled and features pull tab and pad for easy opening and access.

Fleece-lined version of pocket also available (HP604).



Viz-a-V Trim Pattern

## RETAIL PRICE LIST

Effective February 1, 2023  
Price subject to change without prior notice



## V-Force® Belted Pants

V-Fit® Design

**3M** Scotchlite®  
Reflective Material

DuPont™ Nomex® | DuPont™ Kevlar®



### Male Model PVFM Female Model PVFF

#### Standard:

- Low-rise waist with belt loops
- 2" Kevlar® belt with thermoplastic quick-release buckle
- Eight suspender buttons
- Self-fabric cuff and kick shield reinforcements standard
- Polymer-coated aramid knee with Lite-N-Dri™ cushioning reinforcements, notched for natural flex
- Thermoplastic zipper fly closure with hook and loop and snap
- Radial inseam band enables free and natural movement
- LION's exclusive SemperDri™ System
- Liner Inspection System

**Also available in Harness Ready — use models PVFWM/PVFWF**

Fully compliant with NFPA 1971 and OSHA Standard 29CFR 1910.1030.

#### PANTS CONSTRUCTION — Male Model PVFM Female Model PVFF

isodri	Suspenders, pockets, and trim NOT INCLUDED in prices	6.5 oz. Armor AP™ Black, Gold or Khaki	6.6 oz. Pioneer™ Gold, Black or Khaki	7.0 oz. PBI Max™ Natural/ 6.9 oz. Flex 7™ Gold**	7.0 oz. PBI Max™ Black/ 6.9 oz. Flex 7™ black**	6.0 oz. PBI Max LP Gold	6.0 oz. PBI Max LP Black
		\$953	\$953	\$1,233	\$1,318	\$1,318	\$1,409
<b>C4</b>	\$1,043	\$1,996	N/A	\$2,276**	\$2,361**	\$2,361	\$2,452
<b>C6</b>	\$1,401	\$2,354	N/A	\$2,634	\$2,719	N/A	N/A
<b>C7</b>	\$1,123	\$2,076	N/A	\$2,356**	\$2,441**	\$2,441	\$2,532
<b>K3</b>	\$861	\$1,814	\$1,814	\$2,094	\$2,179	N/A	N/A
<b>K4</b>	\$947	\$1,900	\$1,900	\$2,180**	\$2,265**	\$2,265	\$2,356
<b>K6</b>	\$1,285	\$2,238	N/A	\$2,518	\$2,603	N/A	N/A
<b>K7</b>	\$1,027	\$1,980	\$1,980	\$2,260**	\$2,345**	\$2,345	\$2,436
<b>K9</b>	\$835	\$1,788	\$1,788	\$2,068	\$2,153	N/A	N/A
<b>O2</b>	\$1,167	N/A	N/A	\$2,400**	\$2,485**	\$2,485	\$2,576
<b>G0</b>	\$1,146	\$2,099	N/A	\$2,379**	\$2,464**	\$2,464	\$2,555
<b>N7</b>	\$1,428	\$2,381	N/A	\$2,661	\$2,746	N/A	N/A

All above liner prices are for traditional liners. Outer shell includes the price of BHS013 and BL007.

\*\*Flex 7 certified composites.

**Separable Liner System:** Add \$93 to list price for pants. CROSSTECH® (codes 6 and 7) liners only.

See LION Catalog for full feature information; option parts can be found beginning on page 25 in this price sheet.

**IMPORTANT NOTE:** For NFPA and OSHA compliant garment, the outer shell and the liner system must be combined — add prices together for full garment, then add a compliant trim pattern (see page 19). LION recommends V-Force pants be worn with the V-Force coat. The wearer must check the coat/pants overlap to assure adequate protection.

#### V-Force Belted Pants Recommended Pocket Option:



**SBP620 Semi-Bellows Pockets**  
9" x 8" x 2" semi-bellows pocket with pleat, two pieces 1.5" x 3" hook and loop closure. Pocket flap is angled and features pull tab and pad for easy opening and access.

#### V-Force Belted Pants Recommended Suspender Option:



**V-Back™ with wire clips**  
Red suspenders with padding feature wire clip connections and padded shoulders with no seams. Available in 36" (SR836M) short, 42" (SR842M) regular and 48" (SR848M) long.

## RETAIL PRICE LIST

Effective February 1, 2023  
Price subject to change without prior notice



# V-Force® Ultra Low-Rise Belted Pants

V-Fit® Design

**3M** Scotchlite™  
Reflective Material

DuPont™ Nomex® | DuPont™ Kevlar®



## Male Model PVUM

### Standard:

- Ultra low-rise waist with belt loops.
- Slim fit through seat and thighs.
- 2" Kevlar® belt with thermoplastic quick-release buckle
- Eight suspender buttons
- Self-fabric cuff and kick shield reinforcements standard
- Polymer-coated aramid knee with Lite-N-Dri™ cushioning reinforcements, notched for natural flex
- Thermoplastic zipper fly closure with hook and loop and snap
- Radial inseam band enables free and natural movement
- LION's exclusive SemperDri™ System
- Liner Inspection System

Fully compliant with NFPA 1971 and OSHA Standard 29CFR 1910.1030.

PANTS CONSTRUCTION — Male Model PVUM							
isodri	Suspenders, pockets, and trim NOT INCLUDED in prices	6.5 oz. Armor AP™ Black, Gold or Khaki	6.6 oz. Pioneer™ Gold, Black or Khaki	7.0 oz. PBI Max™ Natural/ 6.9 oz. Flex 7™ Gold**	7.0 oz. PBI Max™ Black/ 6.9 oz. Flex 7™ black**	6.0 oz. PBI Max LP Gold	6.0 oz. PBI Max LP Black
		\$953	\$953	\$1,233	\$1,318	\$1,318	\$1,409
<b>C4</b>	\$1,043	\$1,996	N/A	\$2,276**	\$2,361**	\$2,361	\$2,452
<b>C6</b>	\$1,401	\$2,354	N/A	\$2,634	\$2,719	N/A	N/A
<b>C7</b>	\$1,123	\$2,076	N/A	\$2,356**	\$2,441**	\$2,441	\$2,532
<b>K3</b>	\$861	\$1,814	\$1,814	\$2,094	\$2,179	N/A	N/A
<b>K4</b>	\$947	\$1,900	\$1,900	\$2,180**	\$2,265**	\$2,265	\$2,356
<b>K6</b>	\$1,285	\$2,238	N/A	\$2,518	\$2,603	N/A	N/A
<b>K7</b>	\$1,027	\$1,980	\$1,980	\$2,260**	\$2,345**	\$2,345	\$2,436
<b>K9</b>	\$835	\$1,788	\$1,788	\$2,068	\$2,153	N/A	N/A
<b>O2</b>	\$1,167	N/A	N/A	\$2,400**	\$2,485**	\$2,485	\$2,576
<b>G0</b>	\$1,146	\$2,099	N/A	\$2,379**	\$2,464**	\$2,464	\$2,555
<b>N7</b>	\$1,428	\$2,381	N/A	\$2,661	\$2,746	N/A	N/A

All above liner prices are for traditional liners. Outer shell includes the price of BHS013 and BL007.

\*\*Flex 7 certified composites.

**Separable Liner System:** Add \$93 to list price for pants. CROSSTECH® (codes 6 and 7) liners only.

See LION Catalog for full feature information; option parts can be found beginning on page 25 in this price sheet.

**IMPORTANT NOTE:** For NFPA and OSHA compliant garment, the outer shell and the liner system must be combined — add prices together for full garment, then add a compliant trim pattern (see page 19). LION recommends V-Force pants be worn with the V-Force coat. The wearer must check the coat/pants overlap to assure adequate protection.

## V-Force Belted Pants

### Recommended Pocket Option:



**SBP620 Semi-Bellows Pockets**  
9" x 8" x 2" semi-bellows pocket with pleat, two pieces 1.5" x 3" hook and loop closure. Pocket flap is angled and features pull tab and pad for easy opening and access.

## V-Force Belted Pants

### Recommended Suspender Option:



**V-Back™ with wire clips**  
Red suspenders with padding feature wire clip connections and padded shoulders with no seams. Available in 36" (SR836M) short, 42" (SR842M) regular and 48" (SR848M) long.

CONFIDENTIAL

LION Turnout™ Price List – 11

## RETAIL PRICE LIST

Effective February 1, 2023  
Price subject to change without prior notice



# V-Force® High-Back Pants

V-Fit® Design

**3M** Scotchlite®  
Reflective Material

DuPont™ Nomex® | DuPont™ Kevlar®



### Male Model PVHM

### Female Model PVHF

#### Standard:

- 5" high-back panel with hook and loop support pad for LION V-Back™ suspenders (required with these pants)
- Snap tabs in front to fasten V-Back suspenders
- Self-fabric cuff and kick shield reinforcements standard
- Polymer-coated aramid knee with Lite-N-Dri™ cushioning reinforcements, notched for natural flex
- Thermoplastic zipper fly closure with hook and loop and snap
- External self-fabric take-up straps with postman slides front pull
- Radial inseam band enables free and natural movement
- LION's exclusive SemperDri™ System
- Liner Inspection System

Fully compliant with NFPA 1971 and OSHA Standard 29CFR 1910.1030.

#### PANTS CONSTRUCTION — Male Model PVHM Female Model PVHF

isodri	Suspenders, pockets, and trim NOT INCLUDED in prices	6.5 oz. Armor AP™ Black, Gold or Khaki	6.6 oz. Pioneer™ Gold, Black or Khaki	7.0 oz. PBI Max™ Natural/ 6.9 oz. Flex 7™ Gold**	7.0 oz. PBI Max™ Black/ 6.9 oz. Flex 7™ black**	6.0 oz. PBI Max LP Gold	6.0 oz. PBI Max LP Black
		\$971	\$971	\$1,274	\$1,356	\$1,356	\$1,445
<b>C4</b>	\$1,043	\$2,014	N/A	\$2,317**	\$2,399**	\$2,399	\$2,488
<b>C6</b>	\$1,401	\$2,372	N/A	\$2,675	\$2,757	N/A	N/A
<b>C7</b>	\$1,123	\$2,094	N/A	\$2,397**	\$2,479**	\$2,479	\$2,568
<b>K3</b>	\$861	\$1,832	\$1,832	\$2,135	\$2,217	N/A	N/A
<b>K4</b>	\$947	\$1,918	\$1,918	\$2,221**	\$2,303**	\$2,303	\$2,392
<b>K6</b>	\$1,285	\$2,256	N/A	\$2,559	\$2,641	N/A	N/A
<b>K7</b>	\$1,027	\$1,998	\$1,998	\$2,301**	\$2,383**	\$2,383	\$2,472
<b>K9</b>	\$835	\$1,806	\$1,806	\$2,109	\$2,191	N/A	N/A
<b>O2</b>	\$1,167	N/A	N/A	\$2,441**	\$2,523**	\$2,523	\$2,612
<b>G0</b>	\$1,146	\$2,117	N/A	\$2,420**	\$2,502**	\$2,502	\$2,591
<b>N7</b>	\$1,428	\$2,399	N/A	\$2,702	\$2,784	N/A	N/A

All above liner prices are for traditional liners. Outer shell includes the price of TUP506.

\*\*Flex 7 certified composites.

**Separable Liner System:** Add \$93 to list price for pants. CROSSTECH® (codes 6 and 7) liners only.

See LION Catalog for full feature information; option parts can be found beginning on page 25 in this price sheet.

**IMPORTANT NOTE:** For NFPA and OSHA compliant garment, the outer shell and the liner system must be combined — add prices together for full garment, then add a compliant trim pattern (see page 19). LION recommends V-Force pants be worn with the V-Force coat. The wearer must check the coat/pants overlap to assure adequate protection.

### V-Force High-Back Pants

#### Required Suspenders:



#### V-Back Quick Adjust, Stretch Padded Suspenders

Designed especially for the V-Force High-Back Pants. Red suspenders with padding feature rectangular metal loops and rear hook and loop fastener panel and are available in 36" (SR836), 40" (SR840) and 45" (SR845) lengths.

### V-Force High-Back Pants

#### Recommended Pocket Option:



#### SBP620 Semi-Bellows Pockets

9" x 8" x 2" semi-bellows pocket with pleat, two pieces 1.5" x 3" hook and loop closure. Pocket flap is angled and features pull tab and pad for easy opening and access.

## RETAIL PRICE LIST

Effective February 1, 2023  
Price subject to change without prior notice



# V-Force® Lumbar Pants

V-Fit® Design

**3M** Scotchlite™  
Reflective Material

DuPont™ | DuPont™  
**Nomex** | **Kevlar**



## Male Model PVLM\* Female Model PVLFF\*

### Standard:

- Standard waist pants
- Integrated Lumbar Support System
- Self-fabric cuff and kick shield reinforcements standard
- Polymer-coated aramid knee with Lite-N-Dri™ cushioning reinforcements, notched for natural flex
- Thermoplastic zipper fly closure with hook and loop pants closure
- Radial inseam band enables free and natural movement
- LION's exclusive SemperDri™ System
- Liner Inspection System

Fully compliant with NFPA 1971 and OSHA Standard 29CFR 1910.1030.

### PANTS CONSTRUCTION — Male Model PVLM Female Model PVLFF

isodri	Suspenders, pockets, and trim NOT INCLUDED in prices	6.5 oz. Armor AP™ Black, Gold or Khaki	6.6 oz. Pioneer™ Gold, Black or Khaki	7.0 oz. PBI Max™ Natural/ 6.9 oz. Flex 7™ Gold**	7.0 oz. PBI Max™ Black/ 6.9 oz. Flex 7™ black**	6.0 oz. PBI Max LP Gold	6.0 oz. PBI Max LP Black
		\$926	\$926	\$1,220	\$1,310	\$1,310	\$1,400
<b>C4</b>	\$1,083	\$2,009	N/A	\$2,303**	\$2,393**	\$2,393	\$2,483
<b>C6</b>	\$1,457	\$2,383	N/A	\$2,677	\$2,767	N/A	N/A
<b>C7</b>	\$1,166	\$2,092	N/A	\$2,836**	\$2,476**	\$2,476	\$2,566
<b>K3</b>	\$899	\$1,825	\$1,825	\$2,119	\$2,209	N/A	N/A
<b>K4</b>	\$986	\$1,912	\$1,912	\$2,206**	\$2,296**	\$2,296	\$2,386
<b>K6</b>	\$1,332	\$2,258	N/A	\$2,552	\$2,642	N/A	N/A
<b>K7</b>	\$1,069	\$1,995	\$1,995	\$2,289**	\$2,379**	\$2,379	\$2,469
<b>K9</b>	\$872	\$1,798	\$1,798	\$2,092	\$2,182	N/A	N/A
<b>G0</b>	\$1,189	\$2,115	N/A	\$2,409**	\$2,499**	\$2,499	\$2,589
<b>N7</b>	\$1,520	\$2,446	N/A	\$2,740	\$2,830	N/A	N/A

All above liner prices are for traditional liners. Outer shell includes the price of BHS009.

\*\*Flex 7 certified composites.

Separable Liner System: Add \$93 to list price for pants. CROSSTECH® (codes 6 and 7) liners only.

See LION Catalog for full feature information; option parts can be found beginning on page 25 in this price sheet.

**IMPORTANT NOTE:** For NFPA and OSHA compliant garment, the outer shell and the liner system must be combined — add prices together for full garment, then add a compliant trim pattern (see page 19). LION recommends V-Force pants be worn with the V-Force coat. The wearer must check the coat/pants overlap to assure adequate protection.

\* No rear pocket or wide angle fly options are available.

### V-Force Lumbar Pants Recommended Pocket Option:



#### SBP620 Semi-Bellows Pockets

9" x 8" x 2" semi-bellows pocket with pleat, two pieces 1.5" x 3" hook and loop closure. Pocket flap is angled and features pull tab and pad for easy opening and access.

### V-Force Lumbar Pants Recommended Suspender Option:



#### V-Back™ with Wire clips

Red suspenders with padding feature wire clips connections and padded shoulders with no seams. Available in 36" (SR836M) short, 42" (SR842M) regular and 48" (SR848M) long.



## RETAIL PRICE LIST

Effective February 1, 2023

Price subject to change without prior notice



# RedZone Contaminant Control Package

V-Force® Coat and Pants

**3M** Scotchlite™  
Reflective Material

DuPont™ Nomex® | DuPont™ Kevlar®

**Features particulate-blocking zones designed to help reduce your exposure to contaminants.**

### Standard:

1. Core Guard
2. Arm Guard
3. Leg Guard
4. Closure Guard



## REDZONE CONTAMINANT CONTROL PACKAGE — V-Force Coat and Pants

Item #	Description	Price
A-REDZONE	RedZone package for V-Force and Super Deluxe Coats. Includes closure guard with zipper and hook and loop, core guard and IsoDri® wristlet with Nomex® Nano Flex. Must be purchased with A-REDZONE-PANTS.	\$620
A-REDZONE-PANTS	RedZone package for V-Force and Super Deluxe Pants. Includes calf guard with Nomex Nano Flex and elastic ankle shield. Must be purchased with A-REDZONE.	\$207

\*RedZone package can be ordered with or without red accents. Coat and pants sold as a set.

RedZone package available on all certified V-Force and Super-Deluxe™ composites.

RedZone package not available on separable liner systems.

RedZone only available with zipper and hook and loop closure.

RedZone package not available with vented moisture barrier, except when used with the N Liner system.

See LION Catalog for full feature information.

To learn more about our new RedZone Contaminant Control Package, visit [lionprotects.com](http://lionprotects.com).



## REDZONE PARTICULATE BLOCKING HOOD

Item #	Description	Price
HD395142=10+U	Black/gray, red stitching	\$147
HD395146=10+U	Tan/gray, red stitching	\$147



## RETAIL PRICE LIST

Effective February 1, 2023  
Price subject to change without prior notice



# Super-Deluxe™ Coat

Freedom® Design

**3M** Scotchlite™  
Reflective Material

DuPont™ Nomex® | DuPont™ Kevlar®



### Male Models CSTM-29, CSTM-305, CSTM-32, CSDM-335, CSDM-35 and CSDM-38\*

### Female Models CSTF-29 and CSDF-32

#### Standard:

- Bi-swing back
- Leather elbow, cuff and shoulder reinforcements
- 3" contoured comfort collar
- Freedom Elbow
- Thermoplastic zipper with hook and loop 3" storm flap closure
- 8" over-the-hand Nomex®/Kevlar® IsoDri® wristlets
- 8" over-the-hand Kevlar/Spandex® wristlets (on non-IsoDri coats)
- Drag Rescue Device (DRD)
- LION's exclusive SemperDri™ System
- Liner Inspection System

Fully compliant with NFPA 1971 and OSHA Standard 29CFR 1910.1030.

COAT CONSTRUCTION — Male Models CSTM-29, CSTM-305, CSTM-32, CSDM-335, CSDM-35 and CSDM-38* Female Models CSTF-29, CSDF-32 and CSDF-35							
isodri	29" - 35"length coats Pockets and trim NOT INCLUDED in prices	6.5 oz. Armor AP™ Black, Gold or Khaki	6.6 oz. Pioneer™ Gold, Black or Khaki	7.0 oz. PBI Max™ Natural/ 6.9 oz. Flex 7™ Gold**	7.0 oz. PBI Max™ Black/ 6.9 oz. Flex 7™ black**	6.0 oz. PBI Max LP Gold	6.0 oz. PBI Max LP Black
		\$1,247	\$1,247	\$1,568	\$1,666	\$1,666	\$1,780
<b>C4</b>	\$1,432	\$2,679	N/A	\$3,000**	\$3,098**	\$3,098	\$3,212
<b>C6</b>	\$1,911	\$3,158	N/A	\$3,479	\$3,577	N/A	N/A
<b>C7</b>	\$1,531	\$2,778	N/A	\$3,099**	\$3,197**	\$3,197	\$3,311
<b>K3</b>	\$1,274	\$2,521	\$2,521	\$2,842	\$2,940	N/A	N/A
<b>K4</b>	\$1,337	\$2,584	\$2,584	\$2,905**	\$3,003**	\$3,003	\$3,117
<b>K6</b>	\$1,804	\$3,051	N/A	\$3,372	\$3,470	N/A	N/A
<b>K7</b>	\$1,442	\$2,689	\$2,689	\$3,010**	\$3,108**	\$3,108	\$3,222
<b>K9</b>	\$1,274	\$2,521	\$2,521	\$2,842	\$2,940	N/A	N/A
<b>O2</b>	\$1,683	N/A	N/A	\$3,251**	\$3,349**	\$3,349	\$3,463
<b>G0</b>	\$1,565	\$2,812	N/A	\$3,133**	\$3,231**	\$3,231	\$3,345
<b>N7</b>	\$1,958	\$3,205	N/A	\$3,526	\$3,624	N/A	N/A

COAT CONSTRUCTION — Male Models CSTM-29, CSTM-305, CSTM-32, CSDM-335, CSDM-35 and CSDM-38* Female Models CSTF-29 and CSDF-32						
	29" - 35"length coats Pockets and trim NOT INCLUDED in prices	7.5 oz. Nomex Essential Yellow, Black, Tan, Red or Natural	6.5 oz. Armor AP Black, Gold or Khaki	6.6 oz. Pioneer Gold, Black or Khaki	7.0 oz. PBI Max Natural	7.0 oz. PBI Max Black
		\$1,131	\$1,247	\$1,247	\$1,568	\$1,666
<b>D3</b>	\$934	\$2,065	\$2,181	N/A	N/A	N/A
<b>D7</b>	\$1,097	\$2,228	\$2,344	\$2,344	\$2,665	\$2,763
<b>D9</b>	\$934	\$2,065	\$2,181	\$2,181	\$2,502	\$2,600
<b>J7</b>	\$1,285	\$2,416	\$2,532	N/A	\$2,853	\$2,951
<b>J9</b>	\$1,115	\$2,246	\$2,362	N/A	\$2,683	\$2,781
<b>M7</b>	\$1,285	\$2,416	N/A	N/A	\$2,853	\$2,951

All above liner prices are for traditional liners.

\*Additional fees apply. Call for quote.

\*\*Flex 7 certified composites.

**Separable Liner System:** Add \$188 to list price for coats. CROSSTECH® (codes 6 and 7) liners only.

**Vented Moisture Barrier for Coats:** Add \$50 to list price for codes 4, 2 and 7 liners and \$66 to list price for code 6.

Add \$38 to list price for RT7100™ (codes 3 and 9) liners.

See LION Catalog for full feature information; option parts can be found beginning on page 27 in this price sheet.

**IMPORTANT NOTE:** For NFPA and OSHA compliant garment, the outer shell and the liner system must be combined — add prices together for full garment, then add a compliant trim pattern (see page 19). LION recommends the Super-Deluxe coat be worn with any model LION Turnout pants. The wearer must check the coat/pants overlap to assure adequate protection.

## RETAIL PRICE LIST

Effective February 1, 2023

Price subject to change without prior notice



# Super-Deluxe™ Pants

Freedom® Design

**3M** Scotchlite™  
Reflective Material

DuPont™ Nomex® | DuPont™ Kevlar®



## Male Model PSDM Female Model PSDF

### Standard:

- Low-rise waist
- Leather knee with Lite-N-Dri™ cushioning reinforcements
- Leather cuff and kick shield reinforcements
- Freedom Knee
- Thermoplastic zipper pants closure with hook and loop storm fly closure
- External self-fabric take-up straps
- LION's exclusive SemperDri™ System
- Liner Inspection System

Fully compliant with NFPA 1971 and OSHA Standard 29CFR 1910.1030.

### PANTS CONSTRUCTION — Male Model PSDM Female Model PSDF

isodri	Suspenders, pockets and trim NOT INCLUDED in prices	6.5 oz. Armor AP™ Black, Gold or Khaki	6.6 oz. Pioneer™ Gold, Black or Khaki	7.0 oz. PBI Max™ Natural/ 6.9 oz. Flex 7™ Gold**	7.0 oz. PBI Max™ Black/ 6.9 oz. Flex 7™ black**	6.0 oz. PBI Max LP Gold	6.0 oz. PBI Max LP Black
		\$639	\$639	\$888	\$956	\$956	\$1,047
<b>C4</b>	\$1,012	\$1,651	N/A	\$1,900**	\$1,968**	\$1,968	\$2,059
<b>C6</b>	\$1,364	\$2,003	N/A	\$2,252	\$2,320	N/A	N/A
<b>C7</b>	\$1,092	\$1,731	N/A	\$1,980**	\$2,048**	\$2,048	\$2,139
<b>K3</b>	\$872	\$1,511	\$1,511	\$1,760	\$1,828	N/A	N/A
<b>K4</b>	\$922	\$1,561	\$1,561	\$1,810**	\$1,878**	\$1,878	\$1,969
<b>K6</b>	\$1,247	\$1,886	N/A	\$2,135	\$2,203	N/A	N/A
<b>K7</b>	\$997	\$1,636	\$1,636	\$1,885**	\$1,953**	\$1,953	\$2,044
<b>K9</b>	\$872	\$1,511	\$1,511	\$1,760	\$1,828	N/A	N/A
<b>O2</b>	\$1,185	N/A	N/A	\$2,073**	\$2,141**	\$2,141	\$2,232
<b>G0</b>	\$1,115	\$1,754	N/A	\$2,003**	\$2,071**	\$2,071	\$2,162
<b>N7</b>	\$1,394	\$2,033	N/A	\$2,282	\$2,350	N/A	N/A

### PANTS CONSTRUCTION — Male Model PSDM Female Model PSDF

Suspenders, pockets and trim NOT INCLUDED in prices	7.5 oz. Nomex Essential Yellow, Black, Tan, Red or Natural	6.5 oz. Armor AP Black, Gold or Khaki	6.6 oz. Pioneer Gold, Black or Khaki	7.0 oz. PBI Max Natural	7.0 oz. PBI Max Black
	\$561	\$639	\$639	\$888	\$956
<b>D3</b>	\$639	\$1,200	\$1,278	N/A	N/A
<b>D7</b>	\$771	\$1,332	\$1,410	\$1,410	\$1,727
<b>D9</b>	\$639	\$1,200	\$1,278	\$1,278	\$1,595
<b>J7</b>	\$910	\$1,471	\$1,549	N/A	\$1,798
<b>J9</b>	\$774	\$1,335	\$1,413	N/A	\$1,662
<b>M7</b>	\$910	\$1,471	N/A	N/A	\$1,798

All above liner prices are for traditional liners.

\*\*Flex 7 certified composites.

Separable Liner System: Add \$93 to list price for pants. CROSSTECH® (codes 6 and 7) liners only.

See LION Catalog for full feature information; option parts can be found beginning on page 27 in this price sheet.

**IMPORTANT NOTE:** For NFPA and OSHA compliant garment, the outer shell and the liner system must be combined — add prices together for full garment, then add a compliant trim pattern (see page 19). LION recommends Super-Deluxe pants be worn with the LION Super-Deluxe coat. The wearer must check the coat/pants overlap to assure adequate protection.

**RETAIL PRICE LIST**

Effective February 1, 2023  
Price subject to change without prior notice

**Liberty™ Coat and Pants**

**3M** Scotchlite™  
Reflective Material

DuPont™  
**Nomex** | DuPont™  
**Kevlar**

**Male Coat Models CLTM-32, CLBM-35 and CLBM-38\*****Female Coat Models CLTF-29 and CLBF-32****Male Pants Model PLBM — Female Pants Model PLBF****Standard Coat:**

- Bi-swing back
- Leather elbow, cuff and shoulder reinforcements
- Thermoplastic zipper with hook and loop 3" storm flap closure
- 4" Kevlar®/Spandex® wristlets
- 3" contoured comfort collar
- Drag Rescue Device (DRD)
- LION's exclusive SemperDri™ System
- Liner Inspection System

**Standard Pants:**

- 7" high-back panel with traditional waist
- Leather knee with Lite-N-Dri™ cushioning reinforcements
- Leather cuff and kick shield reinforcements
- Freedom® Knee
- Thermoplastic zipper with hook and loop storm fly closure
- Self-fabric take-up straps
- LION's exclusive SemperDri System
- Liner Inspection System

Fully compliant with NFPA 1971 and OSHA Standard 29CFR 1910.1030.

**COAT CONSTRUCTION — Male Models CLTM-32, CLBM-35 and CLBM-38\* Female Models CLTF-29 and CLBF-32**

29", 32", 35" and 38" length coats Pockets and trim NOT INCLUDED in prices		7.5 oz. Nomex Essential Yellow, Black, Tan, Red or Natural	6.5 oz. Armor AP Black, Gold or Khaki	6.6 oz. Pioneer Gold, Black or Khaki	7.0 oz. PBI Max Natural	7.0 oz. PBI Max Black
		\$942	\$1,081	\$1,081	\$1,386	\$1,441
<b>D3</b>	\$754	\$1,696	\$1,835	N/A	N/A	N/A
<b>D7</b>	\$890	\$1,832	\$1,971	\$1,971	\$2,276	\$2,331
<b>D9</b>	\$754	\$1,696	\$1,835	\$1,835	\$2,140	\$2,195
<b>J7</b>	\$1,045	\$1,987	\$2,126	N/A	\$2,431	\$2,486
<b>J9</b>	\$893	\$1,835	\$1,974	N/A	\$2,279	\$2,334

See LION Catalog for full feature information; option parts can be found beginning on page 27 in this price sheet.

\*Additional fees apply. Call for quote.

**PANTS CONSTRUCTION — Male Model PLBM Female Model PLBF**

Suspenders, pockets and trim NOT INCLUDED in prices		7.5 oz. Nomex Essential Yellow, Black, Tan, Red or Natural	6.5 oz. Armor AP Black, Gold or Khaki	6.6 oz. Pioneer Gold, Black or Khaki	7.0 oz. PBI Max Natural	7.0 oz. PBI Max Black
		\$553	\$661	\$661	\$934	\$983
<b>D3</b>	\$583	\$1,136	\$1,244	N/A	N/A	N/A
<b>D7</b>	\$710	\$1,263	\$1,371	\$1,371	\$1,644	\$1,693
<b>D9</b>	\$583	\$1,136	\$1,244	\$1,244	\$1,517	\$1,566
<b>J7</b>	\$833	\$1,386	\$1,494	N/A	\$1,767	\$1,816
<b>J9</b>	\$708	\$1,261	\$1,369	N/A	\$1,642	\$1,691

All above liner prices are for traditional liners.

See LION Catalog for full feature information; option parts can be found beginning on page 27 in this price sheet.

**IMPORTANT NOTE:** For NFPA and OSHA compliant garment, the outer shell and the liner system must be combined — add prices together for full garment, then add a compliant trim pattern (see page 19). LION recommends the Liberty coat be worn with any LION turnout pants. LION recommends Liberty pants be worn with any LION turnout coat. The wearer must check the coat/pants overlap to assure adequate protection.

## RETAIL PRICE LIST

Effective February 1, 2023  
Price subject to change without prior notice



# Traditional Series Coat and Pants

**3M** Scotchlite™  
Reflective Material

DuPont™ | DuPont™  
**Nomex** | **Kevlar**



### Male Coat Models CBGM-35 and CBGM-38\*

### Female Coat Models CBGF-32 and CBGF-35

### Male Pants Model PBGM — Female Pants Model PBGF

#### Standard Coat:

- Leather elbow, cuff and shoulder reinforcements
- 3" contoured comfort collar
- Hook & dee storm flap closure with hook and loop coat closure
- 4" Kevlar®/Spandex® wristlets
- Drag Rescue Device (DRD)
- LION's exclusive SemperDri™ System
- Liner Inspection System

#### Standard Pants:

- Traditional waist
- Leather knee with Lite-N-Dri™ cushioning reinforcements
- Leather cuff and kick shield reinforcements
- Freedom® Knee
- Hook and loop storm fly closure with hook & dee fastener
- LION's exclusive SemperDri System
- Liner Inspection System

Fully compliant with NFPA 1971 and OSHA Standard 29CFR 1910.1030.

#### COAT CONSTRUCTION — Male Models CBGM-35 and CBGM-38\* Female Models CBGF-32 and CBGF-35

32" - 38"  
length coats  
Pockets and trim  
NOT INCLUDED  
in prices

7.5 oz. Nomex Essential  
Yellow, Black, Tan,  
Red or Natural

6.5 oz. Armor AP  
Black, Gold or Khaki

6.6 oz. Pioneer  
Gold, Black  
or Khaki

7.0 oz. PBI Max  
Natural

7.0 oz. PBI Max  
Black

		\$920	\$1,053	\$1,053	\$1,367	\$1,419
<b>D3</b>	\$742	\$1,662	\$1,795	N/A	N/A	N/A
<b>D7</b>	\$886	\$1,806	\$1,939	\$1,939	\$2,253	\$2,305
<b>D9</b>	\$742	\$1,662	\$1,795	\$1,795	\$2,109	\$2,161
<b>J7</b>	\$1,031	\$1,951	\$2,084	N/A	\$2,398	\$2,450
<b>J9</b>	\$889	\$1,809	\$1,942	N/A	\$2,256	\$2,308

See LION Catalog for full feature information; option parts can be found beginning on page 27 in this price sheet.

\*Additional fees apply. Call for quote.

#### PANTS CONSTRUCTION — Male Model PBGM Female Model PBGF

Suspenders,  
pockets and trim  
NOT INCLUDED  
in prices

7.5 oz. Nomex Essential  
Yellow, Black, Tan,  
Red or Natural

6.5 oz. Armor AP  
Black, Gold or Khaki

6.6 oz. Pioneer  
Gold, Black  
or Khaki

7.0 oz. PBI Max  
Natural

7.0 oz. PBI Max  
Black

		\$474	\$565	\$565	\$824	\$869
<b>D3</b>	\$583	\$1,057	\$1,148	N/A	N/A	N/A
<b>D7</b>	\$710	\$1,184	\$1,275	\$1,275	\$1,534	\$1,579
<b>D9</b>	\$583	\$1,057	\$1,148	\$1,148	\$1,407	\$1,452
<b>J7</b>	\$833	\$1,307	\$1,398	N/A	\$1,657	\$1,702
<b>J9</b>	\$708	\$1,182	\$1,273	N/A	\$1,532	\$1,577

All above liner prices are for traditional liners.

See LION Catalog for full feature information; option parts can be found beginning on page 27 in this price sheet.

**IMPORTANT NOTE:** For NFPA and OSHA compliant garment, the outer shell and the liner system must be combined — add prices together for full garment, then add a compliant trim pattern (see page 19). LION recommends the Traditional coat be worn with any LION turnout pants. LION recommends Traditional pants be worn with any LION turnout coat. The wearer must check the coat/pants overlap to assure adequate protection.

**RETAIL PRICE LIST**

Effective February 1, 2023  
Price subject to change without prior notice

**Trim Patterns**

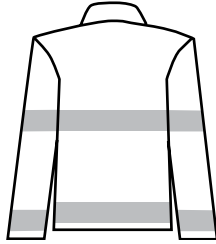
**For use with LION Turnouts™ Structural Coats and Pants**

**3M Scotchlite™**  
Reflective Material

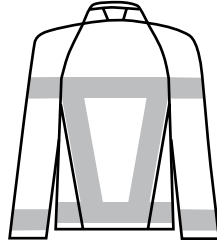
Fully compliant with NFPA 1971 and OSHA Standard 29CFR 1910.1030.

**REFLECTIVE TRIM PATTERNS**

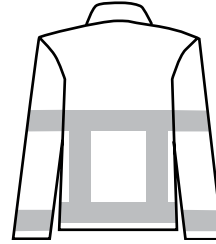
NFPA



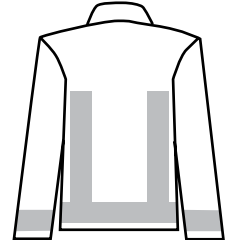
New York City



Viz-a-V™  
(V-Force® coat only)



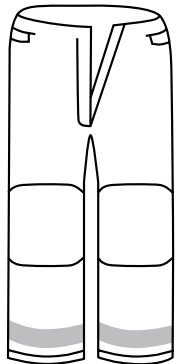
High-Visibility  
(Not available on V-Force coat)



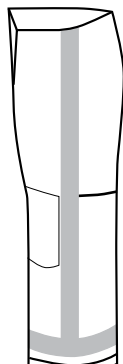
ProjectFIRES

**REFLECTIVE COAT TRIM OPTIONS (Other trim styles available on request)**

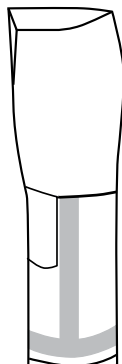
Item #	Coat Trim Pattern	Oralite® Ventilated Trim Yellow (RPY)	3M™ Scotchlite™ Ventilated Fire Coat Trim Red/Silver (PTR) or Yellow/Silver (PTY)
CT104	3" NFPA	\$205	\$205
CT204	3" New York City	\$276	\$276
CT304	3" High-Visibility	\$347	\$347
CT404	3" ProjectFIRES	\$261	\$261
CT504	3" Viz-a-V (V-Force model only)	\$347	\$347
CT505	3" Viz-a-V (V-Force Bi-swing model only)	\$347	\$347
CTB26	Vertical trim on DRD flap	\$10	\$10



3" Stripe Above Cuff



3" Vertical Side  
(PTS3)



3" Vertical Side  
(PTS6)

Item #	Pants Trim Pattern	Oralite Ventilated Trim Yellow (RPY)	3M Scotchlite Ventilated Fire Coat Trim Red/Silver (PTR) or Yellow/Silver (PTY)
PTC4	3" stripe above cuffs	\$62	\$62
PTS3*	3" vertical side	\$120	\$120
PTS6*	3" vertical side	\$53	\$53

\*Price does not include cuff trim

**RETAIL PRICE LIST**

Effective February 1, 2023  
Price subject to change without prior notice



# Custom Lettering

## For use with LION Turnouts™ Structural Coats and Pants

Fully compliant with NFPA 1971 and OSHA Standard 29CFR 1910.1030.

**3M** Scotchlite™  
Reflective Material

DuPont™  
**Nomex** | DuPont™  
**Kevlar**

**NAME LETTERING\*** — Consists of any lettering identifying an individual's name, a fire department name or an individual's rank. Charges apply for each line of lettering; multiple lines may be purchased if necessary. Each line could incorporate up to 12 characters.\* (Each garment may receive different letters.)

\*Number of letters that will fit depends on location, style of garment, size of garment and other options requested. 2" lettering will be used to fit longer names if needed.

**Sewn On**

Item #	Description	Price	Item #	Description	Price
LTSL2RNS	2" red/orange 3M™ Scotchlite™ Reflective Material letters	\$56 per line	LTSL3RNS	3" red/orange 3M Scotchlite Reflective Material letters	\$78 per line
LTSL2YNS	2" lime/yellow 3M Scotchlite Reflective Material letters	\$56 per line	LTSL3YNS	3" lime/yellow 3M Scotchlite Reflective Material letters	\$78 per line
LTRP2YNS	2" lime/yellow sew on Oralite® letters	\$56 per line	LTRP3YNS	3" lime/yellow sew on Oralite letters	\$78 per line

**ID LETTERING** — Consists of alpha or numeric codes, acronyms or abbreviations that are fewer than 6 characters. Charges apply for each line of lettering; multiple lines may be purchased if necessary. (Each garment may receive different letters.)

**Sewn On**

Item #	Description	Price	Item #	Description	Price
LTSL2RIS	2" red/orange 3M Scotchlite Reflective Material letters	\$30 per line	LTSL3RIS	3" red/orange 3M Scotchlite Reflective Material letters	\$32 per line
LTSL2YIS	2" lime/yellow 3M Scotchlite Reflective Material letters	\$30 per line	LTSL3YIS	3" lime/yellow 3M Scotchlite Reflective Material letters	\$32 per line
LTRP2YIS	2" lime/yellow sew on Oralite letters	\$30 per line	LTRP3YIS	3" lime/yellow sew on Oralite letters	\$32 per line

**LETTERING PATCHES\*\***

\*\*Letters at extra charge. All letter patches are sewn on unless hook and loop attachment selected.

Item #	Description	Pioneer, Advance, Nomex and Armor AP	PBI Max, PBI Max LP and Flex 7
LP1	4" x 18" one line letter patch	\$32	\$39
LP15	4" x 15" one line letter patch	\$31	\$36
LP2	8" x 18" two line letter patch	\$37	\$50
LP20	8" x 15" two line letter patch	\$36	\$46
LP3	12" x 19" three line letter patch (Not available on V-Force® model coats.)	\$39	\$68
LPV2	Hook and loop attachment for above letter patches	\$39	\$39
LP8	5" x 3" letter patch	\$29	\$30
LPV8	Hook and loop attachment for LP8	\$31	\$31

**HANGING LETTERING PATCHES\*\*\***

\*\*\*Letters at extra charge. Hook and loop AND snap attachment are RECOMMENDED for all hanging letter patches.

Item #	Description	Pioneer, Advance, Nomex and Armor AP	PBI Max, PBI Max LP and Flex 7
LP34	5" x 18" one line hanging letter patch for placement on hem. Must be used with LPV13 and LPS6.	\$39	\$55
LPS6	Two snap attachment for LP34	\$10	\$10
LPV13	Hook and loop attachment for LP34	\$23	\$23

**G&L LETTERING PATCHES\*\*\*\***

\*\*\*\*Order must allow three weeks lead time.

Item #	Description	Price	Item #	Description	Price
LP53	Letter patch with 2" lime/yellow letters with black outline (Maximum of 9 characters)	\$161	LP56	Letter patch with 3" silver letters with black outline (Maximum of 7 characters)	\$161
LP54	Letter patch with 3" lime/yellow letters with black outline (Maximum of 7 characters)	\$161	LP57	Letter patch with 2" silver letters with lime/yellow outline (Maximum of 9 characters)	\$161
LP55	Letter patch with 2" silver letters with black outline (Maximum of 9 characters)	\$161	LP58	Letter patch with 3" silver letters with lime/yellow outline (Maximum of 7 characters)	\$161
LP73	Two-line letter patch with 3" silver letters with black outline (Maximum of 7 characters per line)	\$292			



**RETAIL PRICE LIST**

Effective February 1, 2023  
Price subject to change without prior notice



# MagneTite™ Magnetic Closure Options

**For use with LION Turnouts™ Structural Coats and Pants**

DuPont™  
**Nomex®** | DuPont™  
**Kevlar®**

Note: On leather or polymer-coated aramid parts, specify Gold, Black or Grey.

Fully compliant with NFPA 1971 and OSHA Standard 29CFR 1910.1030.

HANDWARMER POCKETS (PAIR)			
Item #	Description (w x h x d)	Pioneer, Advance, Nomex and Armor AP	PBI Max, PBI Max LP and Flex 7
HP653M	9" x 9" x 2" full bellows and handwarmer combination pocket with 6" opening. Full bellows pocket lined with Kevlar®. Handwarmer fully lined with fleece. 2-layers Lite-N-Dri™ inside flap corner and PCA tab out, 5" x 7" x 10" flap with magnetic closure.	\$380	\$480
HP701M	9" x 8" x 2" full bellows and handwarmer combination pocket with 6" opening. Full bellows pocket lined with Kevlar. Handwarmer fully lined with fleece. 2-layers Lite-N-Dri inside flap corner and PCA tab out, 5" x 7" x 10" flap with magnetic closure.	\$314	\$414
HP616M	8" x 8" x 2" split full bellows pocket (split 50/50 and no lining). Handwarmer combination pocket with 6" opening on side, self-fabric backer, handwarmer lined with SemperDri™. Split flap with magnetic closure.	\$300	\$346
FULL BELLOWS POCKETS (PAIR)			
Item #	Description (w x h x d)	Pioneer, Advance, Nomex and Armor AP	PBI Max, PBI Max LP and Flex 7
FBP579M	Full bellows pockets, 10" x 10" x 2" fully lined with Kevlar twill on three sides, with magnetic closure	\$268	\$330
FBP651M	10" x 10" x 2" fully lined with Kevlar twill all four sides with magnetic closure	\$304	\$356
FBP574M	Full bellows pockets, 8" x 8" x 2" fully lined with Kevlar twill three sides and 3" up on shell, boxed flap with magnetic closure	\$266	\$322
FBP1002M	9" x 10" x 2" fully lined with Kevlar twill all four sides. Two additional layers of outer shell fabric on shell side of pocket. First row is 6.5" high and second row is 4.5" high. Both layers are stitched in 3" increments to create six compartments with magnetic closure.	\$358	\$416
FBP1142M	10" x 8 x 2" full bellows pocket with Kevlar fully lined 3 sides inside pocket, with magnetic closure	\$226	\$298
FBP1149M	9" x 10" x 2" full bellows pocket lined with Kevlar. PCA inside pocket and 5" up outside pocket, with additional layers shell fab lined with Kevlar on shell inside. First layer 6.5" h and second layer 4.5" h, stitched in 3" increments to create 6 compartments sewn to Kevlar and PCA, 8.5" x 1" padded flap with magnetic closure.	\$428	\$522
SPLIT BELLOWS POCKETS (PAIR)			
Item #	Description (w x h x d)	Pioneer, Advance, Nomex and Armor AP	PBI Max, PBI Max LP and Flex 7
BDP956M	10" x 10" x 2" split bellows pocket and flap with Kevlar fully lined all 4 sides insided pocket and PCA 5" up outside on pocket. 2 Kevlar pouches with metal disc inside pocket, kevlar Lite-N-Dri pouch with magnets in each flap. 5" x 1" and 3" x 1" padding on flaps, antenna notch on flap.	\$374	\$440
RADIO POCKETS (EACH)			
Item #	Description (w x h x d)	Pioneer, Advance, Nomex and Armor AP	PBI Max, PBI Max LP and Flex 7
RP511M	Radio/flashlight pockets, 3.5" x 9" x 2", poly/cotton lined, antenna notch, with magnetic closure	\$86	\$111
RP514M	3.5" x 9" x 2", poly/cotton lined and magnetic closure	\$84	\$92
RP915M	3" x 7" x 2" radio pocket with poly/cotton fully lined all 3 sides inside pocket, 1 Kevlar pouch with 2 metal disc inside pocket, 1 Kevlar Lite-N-Dri pouch with 1 magnet (gold) in flap, 1 antenna notch on small flap	\$84	\$92
RP916M	4" x 8.5" x 2" radio pocket with poly/cotton fully lined all 3 sides inside pocket, 1 Kevlar pouch with 2 metal disc inside pocket, 1 Kevlar Lite-N-Dri pouch with 1 magnet (gold) in flap, 1 antenna notch on flap	\$80	\$98
RP842M	4" x 9" x 2", poly/cotton lined with magnetic closure	\$91	\$102

**RETAIL PRICE LIST**

Effective February 1, 2023  
Price subject to change without prior notice



# MagneTite™ Magnetic Closure Options

**For use with LION Turnouts™ Structural Coats and Pants**

DuPont™  
**Nomex** | DuPont™  
**Kevlar**

Note: On leather or polymer-coated aramid parts, specify Gold, Black or Grey.

Fully compliant with NFPA 1971 and OSHA Standard 29CFR 1910.1030.

## COAT COLLARS AND THROAT TABS

Item #	Description (w x h x d)	Pioneer, Advance, Nomex and Armor AP	PBI Max, PBI Max LP and Flex 7
CRTT208M	4" x11" contoured collar throat tab with Gore RT7100™, set on right side, with magnetic closure	\$56	\$67
CRTT208SM	4" x11" contoured collar throat tab with Stedair 4000, set on right side, with magnetic closure	\$56	\$67
CRTT208GM	4" x11" contoured collar throat tab with Stedair gold, set on right side, with magnetic closure	\$60	\$70
CRTT211M	4" x11" contoured collar throat tab with Gore RT7100, set on left side, with magnetic closure	\$56	\$67
CR236ZM	3" contoured comfort collar with CROSSTECH® black lining, zipper attachment and magnetic closure, for V-Fit®.	\$56	\$56
CR237ZM	3" contoured comfort collar with CROSSTECH black lining, zipper attachment and magnetic closure, for Super-Deluxe™	\$56	\$56
CR238ZM	4" contoured comfort collar with CROSSTECH black lining, zipper attachment and magnetic closure, for V-Fit.	\$84	\$124
CR239ZM	4" contoured comfort collar with CROSSTECH black lining, zipper attachment and magnetic closure, for Super-Deluxe	\$84	\$124

## FLY CLOSURES

Item #	Description (w x h x d)	Pioneer, Advance, Nomex and Armor AP	PBI Max, PBI Max LP and Flex 7
FLY233ZM	Sewn on pants fly with thermoplastic zipper pants closure and magnetic storm fly closure, for V-Fit	\$56	\$56
FLY233ZM-R	Sewn on pants fly with thermoplastic zipper pants closure and magnetic storm fly closure, for V-Fit right side	\$56	\$56
FLY243ZM-ULR	Sewn on pants fly with thermoplastic zipper pants closure and magnetic storm fly closure, for ultra low rise V-Fit right side	\$56	\$56
FLY230ZM	Sewn on pants fly with thermoplastic zipper pants closure and magnetic storm fly closure, for Super-Deluxe	\$56	\$56
FLY230ZM-R	Sewn on pants fly with thermoplastic zipper pants closure and magnetic storm fly closure, for Super-Deluxe right side	\$56	\$56

## STORM FLAPS

Item #	Description (w x h x d)	Pioneer, Advance, Nomex and Armor AP	PBI Max, PBI Max LP and Flex 7
SF318M	3" storm flap, thermoplastic zipper coat closure in with PCA tab, magnets out and Gore RT7100, for V-Fit coat	\$207	\$220
SF319M	5" storm flaps thermoplastic zipper coat closure in with PCA tab, magnets out and Gore RT7100, for V-Fit coat	\$220	\$240
SF320M	3" storm flap, thermoplastic zipper in with PCA tab, magnets out and Gore RT7100, for V-Fit bi-swing coat	\$207	\$220
SF321M	5" storm flap, thermoplastic zipper in with PCA tab, magnets out and Gore RT7100, for V-Fit bi-swing coat	\$220	\$240
SF322M	3" storm flaps, thermoplastic zipper in with PCA tab, magnets out and Gore RT7100, for Super-Deluxe	\$207	\$220
SF323M	5" storm flaps, thermoplastic zipper in with PCA tab, magnets out and Gore RT7100, for Super-Deluxe	\$220	\$240

**RETAIL PRICE LIST**

Effective February 1, 2023  
Price subject to change without prior notice

**V-Force® Options — Coat**
**Available substitutes for standard parts on  
V-Force turnouts (add to base price)**

DuPont™  
**Nomex®** | DuPont™  
**Kevlar®**

Fully compliant with NFPA 1971 and OSHA Standard 29CFR 1910.1030.

**WRISTLETS AND WATERWELL**

Item #	Description	Price
CLW753	8" IsoDri® over-the-hand wristlets - Kevlar®/Nomex®/Spandex® construction	Std.
CLW752	4" IsoDri wristlets - Kevlar/Nomex/Spandex construction	N/C
CLW213	Chambray DWR 2-layer Araflo® quilt/3-layer CROSSTECH® with 1" elastic wrist shield. Waterwell with .75" loop, male snap, sewn to coat liner sleeves.	\$89

\*Stedair liners will get Stedair parts options.

**STORM FLAPS — Standard V-Force Coat**

All storm flaps have squared corners		Pioneer, Advance and Armor AP	PBI Max, PBI Max LP and Flex 7
Item #	Description		
SF245	2.5" storm flap, thermoplastic zipper coat closure with hook and loop and RT7100™ PTFE moisture barrier	Std.	Std.
SF228	2.5" storm flap, hook and loop coat closure with hook and D-ring storm flap closure and RT7100 PTFE moisture barrier	N/C	N/C
SF229	2.5" storm flap, thermoplastic zipper coat closure with hook and loop and CROSSTECH black moisture barrier	\$18	\$18
SF230	2.5" storm flap, hook and loop coat closure with hook and D-ring storm flap closure and CROSSTECH black moisture barrier	\$27	\$27
SF234	5" storm flap, hook and D-ring coat closure with hook and loop storm flap closure ("Chicago" style) and RT7100 PTFE moisture barrier	\$56	\$80
SF233	5" storm flap, hook and D-ring coat closure with hook and loop storm flap closure ("Chicago" style) and CROSSTECH black moisture barrier	\$84	\$108

\*Stedair liners will get Stedair parts options.

**STORM FLAPS — V-Force Bi-Swing Coat**

All storm flaps have squared corners		Pioneer, Advance and Armor AP	PBI Max, PBI Max LP and Flex 7
Item #	Description		
SF244	2.5" storm flap, thermoplastic zipper coat closure with hook and loop and RT7100 PTFE moisture barrier	Std.	Std.
SF248	2.5" storm flap, hook and loop coat closure with hook and D-ring storm flap closure and RT7100 PTFE moisture barrier	N/C	N/C
SF251	2.5" storm flap, thermoplastic zipper coat closure with hook and loop and CROSSTECH black moisture barrier	\$18	\$18
SF252	2.5" storm flap, hook and loop coat closure with hook and D-ring storm flap closure and CROSSTECH black moisture barrier	\$27	\$27
SF243	5" storm flap, hook and D-ring coat closure with hook and loop storm flap closure ("Chicago" style) and RT7100 PTFE moisture barrier	\$68	\$80
SF242	5" storm flap, hook and D-ring coat closure with hook and loop storm flap closure ("Chicago" style) and CROSSTECH black moisture barrier	\$89	\$108

\*Stedair liners will get Stedair parts options.

**ELBOW REINFORCEMENTS — Standard V-Force Coat**

Item #	Description	Pioneer, Advance and Armor AP	PBI Max, PBI Max LP and Flex 7
EB512	Leather elbows	N/C	N/C
EB514	Leather elbows with Lite-N-Dri™ cushioning	\$29	\$29
EB511	Self-fabric elbows	N/C	\$29
EB515	Self-fabric elbows with Lite-N-Dri cushioning	\$28	\$44
EB513	Polymer-coated aramid elbows with Lite-N-Dri cushioning	Std.	Std.

**ELBOW REINFORCEMENTS — V-Force Bi-Swing Coat**

Item #	Description	Pioneer, Advance and Armor AP	PBI Max, PBI Max LP and Flex 7
EB517	Self-fabric elbows	Std.	Std.
EB518	Leather elbows	N/C	N/C
EB519	Self-fabric elbows with Lite-N-Dri cushioning	\$30	\$30
EB521	Polymer-coated aramid elbows with Lite-N-Dri cushioning	N/C	N/C

**RETAIL PRICE LIST**

Effective February 1, 2023  
Price subject to change without prior notice

**V-Force® Options — Coat**

Note: On leather or polymer-coated aramid parts, specify Gold, Black or Grey.

**Available substitutes for standard parts on  
V-Force turnouts (add to base price)**

DuPont™  
**Nomex** | DuPont™  
**Kevlar**

Fully compliant with NFPA 1971 and OSHA Standard 29CFR 1910.1030.

**SHOULDER REINFORCEMENTS**

Item #	Description	Pioneer, Advance and Armor AP	PBI Max, PBI Max LP and Flex 7
SC709	Leather shoulder caps	N/C	N/C
SC712	Leather shoulder caps with Lite-N-Dri™ cushioning	\$30	\$30
SC715	Self-fabric shoulder caps (std.)	Std.	Std.
SC711	Self-fabric shoulder caps with Lite-N-Dri cushioning	\$40	\$50
SC710	Polymer-coated aramid shoulder caps	\$30	\$30
SC713	Polymer-coated aramid shoulder caps with Lite-N-Dri cushioning	\$45	\$45

**COAT COLLARS AND THROAT TABS**

Item #	Description	Pioneer, Advance and Armor AP	PBI Max, PBI Max LP and Flex 7
CRTT208	4" x 11" contoured collar throat tab placed on right side with RT7100® moisture barrier lining	\$37	\$46
CRTT209	4" x 11" contoured collar throat tab placed on right side with CROSSTECH® black moisture barrier lining	\$46	\$68
CR238	4" contoured comfort collar with CROSSTECH black moisture barrier lining	\$48	\$69
CLF223	3" self-fabric and 3-layer CROSSTECH split collar with loop (use only with 3-layer CROSSTECH liner)	\$71	\$71
CLF224	4" self-fabric and 3-layer CROSSTECH split collar with loop (use only with 3-layer CROSSTECH liner)	\$78	\$78

\*Stedair liners will get Stedair parts options.

**COAT CUFF REINFORCEMENTS**

Item #	Description	Pioneer, Advance and Armor AP	PBI Max, PBI Max LP and Flex 7
CC712	Leather coat cuff reinforcements	N/C	N/C
CC710	Self-fabric cuffs (std.)	Std.	Std.
CC711	Polymer-coated aramid cuffs	\$8	\$8

**COAT ZIPPER PARTS**

Item #	Description	Pioneer, Advance and Armor AP	PBI Max, PBI Max LP and Flex 7
CC710Z	Self-fabric coat cuff reinforcements	\$23	\$23
CC711Z	Polymer-coated aramid coat cuff reinforcements Leather coat cuff reinforcements	\$23	\$23
CC712Z	Leather coat cuff reinforcements	\$18	\$18
CR238Z	4" contoured comfort collar with CROSSTECH black moisture barrier lining	\$60	\$102

**RETAIL PRICE LIST**

Effective February 1, 2023  
Price subject to change without prior notice

**V-Force® Options — Pants**

Note: On leather or polymer-coated aramid parts, specify Gold, Black or Grey.

**Available substitutes for standard parts on  
V-Force turnouts (add to base price)**

DuPont™  
**Nomex.** | DuPont™  
**Kevlar.**

Fully compliant with NFPA 1971 and OSHA Standard 29CFR 1910.1030.

**PANTS CUFF REINFORCEMENTS**

Item #	Description	Pioneer, Advance and Armor AP	PBI Max, PBI Max LP and Flex 7
PC000	Leather cuffs and kick shield	N/C	N/C
PC500	Self-fabric cuffs and kick shield (std.)	Std.	Std.
PC504	Polymer-coated aramid cuffs and kick shield	\$31	\$31

**KNEE REINFORCEMENTS**

Item #	Description	Pioneer, Advance and Armor AP	PBI Max, PBI Max LP and Flex 7
KP211	Polymer-coated aramid knees with additional layer of Lite-N-Dri™ cushioning on shell	Std.	Std.
KP226	Polymer-coated aramid knees with additional layer of Lite-N-Dri and a layer of silicone foam cushioning on shell	\$149	\$149
KP212	Self-fabric knees with additional layer of Lite-N-Dri cushioning on shell	\$11	\$32
KP225	Self-fabric knees with additional layer of Lite-N-Dri and a layer of silicone foam cushioning on shell	\$163	\$174
KP213	Leather knees with additional layer of Lite-N-Dri cushioning on shell	N/C	N/C
KP227	Leather knees with additional layer of Lite-N-Dri and a layer of silicone foam cushioning on shell	\$149	\$149
KP236	SuperFabric® knees with additional layer of Lite-N-Dri cushioning on shell	\$35	\$35
KP237	SuperFabric knees with additional layer of Lite-N-Dri and a layer of silicone foam cushioning on shell	\$149	\$149

\*No removable knees available for V-Force pants.

**FLY CLOSURES**

Item #	Description	Pioneer, Advance and Armor AP	PBI Max, PBI Max LP and Flex 7
FLY233	Sewn-on fly with thermoplastic zipper pants closure and hook and loop storm fly closure, V-Fit® Design models. Std. on PVFM, PVHM, PVLN and PVUM	Std.	Std.
FLY218	Sewn-on fly with hook and D-ring pants closure and hook and loop storm fly closure, V-Fit Design models. (This closure requires a front take-up strap. See option below for price.)	N/C	N/C
FLY234	Sewn-on fly with thermoplastic zipper, hook and loop closure. PCA pull tab at top of fly.	\$97	\$97

\*Stedair liners will get Stedair parts options.

**PANTS ZIPPER PARTS**

Item #	Description	Pioneer, Advance and Armor AP	PBI Max, PBI Max LP and Flex 7
FLY233Z	Sewn-on fly with thermoplastic zipper pants closure and hook and loop storm fly closure, V-Fit Design models.	\$13	\$13
FLY218Z	Sewn-on fly with hook and D-ring pants closure and hook and loop storm fly closure, V-Fit Design models. (This closure requires a front take-up strap.)	\$13	\$13

**FRONT TAKE-UP STRAPS — Sold individually**

Item #	Description	Pioneer, Advance and Armor AP	PBI Max, PBI Max LP and Flex 7
TUP503	Short leather take-up strap with snap hook and D-ring	\$11	\$11
TUP000	Long leather take-up strap 5/8" buckle with snap hook and D-ring (to be used when no side take-up straps are present)	\$16	\$16
TUP016	Hook and D-ring closure rivet directly to shell with leather backing	\$31	\$31
TUP512	Self-fabric fly take-up with snap hook and D-ring riveted to shell	\$37	\$37

**SIDE TAKE-UP STRAPS — Sold in pairs**

Item #	Description	Pioneer, Advance and Armor AP	PBI Max, PBI Max LP and Flex 7
TUP700	Outer shell material take-up straps with hook and loop closure and nickel loop	\$35	\$35
TUP501	Outer shell material take-up straps with hook and loop closure and nickel loop (pants or coats)	\$36	\$36
TUP506	.5" self-fabric take-up straps with 5/8" postman slides (pants or coats) — V-Force High-Back Pants	Std.	Std.
TUP506	.5" self-fabric take-up straps with 5/8" postman slides (pants or coats) — V-Force Belted and Ultra Low-Rise Pants	\$37	\$37
TUP507	1" x 6" self-fabric take-up straps with hook and loop closure and nickel loop (pants or coats)	\$37	\$37
TUP531	Outer shell material take-up straps with hook and loop closure and two nickel loops	\$37	\$37
TUP704	1" self-fabric take-up straps with 5/8" postman slides (pants or coats)	\$43	\$43

**LEG TABS**

Item #	Description	Pioneer, Advance and Armor AP	PBI Max, PBI Max LP and Flex 7
LGT000	2 leather leg tabs per leg, with snaps	Std.	Std.
LGT003	2 self-fabric leg tabs per leg, with snaps	\$18	\$18

**RETAIL PRICE LIST**

Effective February 1, 2023  
Price subject to change without prior notice

**V-Force® Add-On Options****Options that can be added to standard V-Force turnouts**

DuPont™  
**Nomex** | DuPont™  
**Kevlar**

Fully compliant with NFPA 1971 and OSHA Standard 29CFR 1910.1030.

**YOKE REINFORCEMENTS — Shell reinforcements**

Item #	Description	Pioneer, Advance and Armor AP	PBI Max, PBI Max LP and Flex 7
YR117	11" SemperDri™ quilt yoke and 12" sleeve reinforcement (V-Force)	\$114	\$114
YR122	11" SemperDri quilt yoke and 12" sleeve reinforcement (V-Force Bi-swing)	\$124	\$124

**BELT LOOPS — V-Force Belted and Ultra Low-rise Pants**

Item #	Description	Pioneer, Advance and Armor AP	PBI Max, PBI Max LP and Flex 7
BL002*	Five self-fabric belt loops, each made using two separate 1" x 3" straps that close with 1" x 2" hook and loop. Three loops bartacked even at waist and two at crotch (for Gemtor or similiar harness).	\$12	\$4
BL007	Three belt loops, 4" wide by 3.5" high, 2-layer self-fabric, double stitched to pants shell, bartacked all four corners.	Std.	Std.
BL008*	Five belt loops, .5" wide by 4.5" high, self-fabric	N/C	N/C

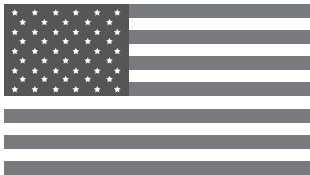
\*Replacing the standard belt loops on PVFM, PVFF or PVUM models

**BELT LOOPS — V-Force High-Back and Lumbar Pants**

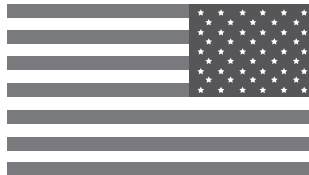
Item #	Description	Pioneer, Advance and Armor AP	PBI Max, PBI Max LP and Flex 7
BL002	Five self-fabric belt loops, each made using two separate 1" x 3" straps that close with 1" x 2" hook and loop. Three loops bartacked even at waist and two at crotch (for Gemtor or similiar harness).	\$82	\$82
BL007	Three belt loops, 4" wide by 3.5" high, 2-layer self-fabric, double stitched to pants shell, bartacked all four corners	\$70	\$78
BL008	Five belt loops, .5" wide by 4.5" high, self-fabric	\$56	\$56
BL021	Nine self-fabric belt loops, each made using two separate 1" x 3" straps that close with 1" x 2" hook and loop. Seven loops bartacked even at waist and two at crotch (for Gemtor or similiar harness).	\$118	\$118

**MISCELLANEOUS OPTIONS AND HARDWARE**

Item #	Description	Pioneer, Advance and Armor AP	PBI Max, PBI Max LP and Flex 7
PLO205	1" elastic sewn to thermal liner leg bottom (V-Fit® Design models)	\$36	\$36
PM0210	4" self-fabric snap tabs on waist, two on the front and two on the back for suspender attachment (see suspenders page 42)	\$40	\$40
PM0542	Boot-cut pants leg	\$32	\$32
EM1	American flag emblem sewn on (stars on upper left corner)	\$36	\$36
EM5	American flag emblem sewn on (stars on upper right corner)	\$36	\$36
MF003	Utility snap (reverse snap riveted to shell)	\$11	\$11
MF011	Utility ring (one D-ring riveted to shell)	\$11	\$11



EM1 American Flag



EM5 American Flag

To be in compliance with proper flag etiquette, it is appropriate to wear an American flag patch on the left or right sleeve. When worn on the left sleeve, the union would appear toward the front and the stripes would run horizontally toward the back (EM1). When worn on the right sleeve, it is considered proper to reverse the design so that the union is at the observer's right to suggest that the flag is flying in the breeze as the wearer moves forward (EM5).



**RETAIL PRICE LIST**

Effective February 1, 2023  
Price subject to change without prior notice



# LION Turnouts™ Options — Coats

## Available substitutes for standard parts on structural turnouts (add to base price)

DuPont™  
**Nomex.** | DuPont™  
**Kevlar.**

Fully compliant with NFPA 1971 and OSHA Standard 29CFR 1910.1030.

Item #	Wristlets	Models		Item #	Wristlets	Models CSDM (F) CSTM (F)
		CSDM (F) CSTM (F) CBGM (F)	CLBM (F) CLTM (F)			
CLW103	8" over-the-hand style wristlets - Kevlar®/Spandex® construction	Std.	N/C	CLW753*	8" IsoDri® over-the-hand wristlets - Kevlar/Nomex/Spandex construction	Std.
CLW110	8" over-the-hand style wristlets - Nomex®/Spandex construction	\$29	\$29	CLW752*	4" IsoDri wristlets -	N/C
CLW101	4" standard wristlets - Kevlar/Spandex construction	N/C	Std.	*Wristlets in shaded area are only available on IsoDri systems.		
CLW102	4" wristlets - Nomex/Spandex construction	N/C	N/C			

\*Stedair liners will get Stedair parts options.

### 3" STORM FLAPS

Item #	Description	Pioneer, Advance, Nomex and Armor AP	PBI Max, PBI Max LP and Flex 7
SF262	Thermoplastic zipper coat closure with hook and loop storm flap closure (std. on all but CBGM)	N/C	N/C
SF201	Hook and loop coat closure with hook and D-ring storm flap closure (std. on CBGM)	N/C	N/C
SF213	Snap coat closure with hook and D-ring storm flap closure	N/C	N/C
SF269	Thermoplastic zipper coat closure with hook and D-ring storm flap closure	\$56	\$56

\*Stedair liners will get Stedair parts options.

### 5" STORM FLAPS

Item #	Description	Pioneer, Advance, Nomex and Armor AP	PBI Max, PBI Max LP and Flex 7
SF202	Hook and D-ring coat closure with hook and loop storm flap closure on right side ("Chicago" style) and RT7100™ PTFE moisture barrier	\$50	\$73
SF208	Hook and D-ring coat closure with hook and loop storm flap closure on right side ("Chicago" style) and CROSSTECH® black moisture barrier	\$79	\$95
SF240	Hook and D-ring coat closure with hook and loop storm flap closure on left side ("Chicago" style) and RT7100 PTFE moisture barrier	\$50	\$73
SF238	Hook and D-ring coat closure with hook and loop storm flap closure on left side ("Chicago" style) and CROSSTECH black moisture barrier	\$79	\$95

\*Stedair liners will get Stedair parts options.

**RETAIL PRICE LIST**

Effective February 1, 2023  
Price subject to change without prior notice



# LION Turnouts™ Options — Coats

Note: On leather or polymer-coated aramid parts, specify Gold, Black or Grey.

## Available substitutes for standard parts on structural turnouts (add to base price)

DuPont™  
**Nomex** | **Kevlar**

Fully compliant with NFPA 1971 and OSHA Standard 29CFR 1910.1030.

### ELBOW REINFORCEMENTS — Super-Deluxe™ Models

Freedom® Design		Pioneer, Advance, Nomex and Armor AP	PBI Max, PBI Max LP and Flex 7
Item #	Description		
BE000	Leather bellows elbows	Std.	Std.
BE23	Leather bellows elbows with Lite-N-Dri™ cushioning	\$18	\$18
BE700	Self-fabric bellows elbows	\$29	\$36
BE701	Self-fabric bellows elbows reinforcements with Lite-N-Dri cushioning	\$40	\$50
BE26	Polymer-coated aramid bellows elbows with Lite-N-Dri cushioning	\$40	\$40

### ELBOW REINFORCEMENTS — Liberty™ and Traditional Models

		Pioneer, Advance, Nomex and Armor AP	PBI Max, PBI Max LP and Flex 7
Item #	Description		
EB111	Leather elbows	Std.	Std.
EB503	Leather elbows with Lite-N-Dri cushioning	\$29	\$29
EB506	Self-fabric elbows	\$29	\$30
EB502	Self-fabric elbows with Lite-N-Dri cushioning	\$42	\$45
EB504	Polymer-coated aramid elbows with Lite-N-Dri cushioning	\$44	\$44

### SHOULDER REINFORCEMENTS — All coats

		Pioneer, Advance, Nomex and Armor AP	PBI Max, PBI Max LP and Flex 7
Item #	Description		
SC709	Leather shoulder caps (std.)	Std.	Std.
SC712	Leather shoulder caps with Lite-N-Dri cushioning	\$30	\$30
SC715	Self-fabric shoulder caps	\$16	\$32
SC711	Self-fabric shoulder caps with Lite-N-Dri cushioning	\$40	\$50
SC710	Polymer-coated aramid shoulder caps	\$30	\$30
SC713	Polymer-coated aramid shoulder caps with Lite-N-Dri cushioning	\$45	\$45

### COAT COLLARS AND THROAT TABS

		Pioneer, Advance, Nomex and Armor AP	PBI Max, PBI Max LP and Flex 7
Item #	Description		
CR239	4" contoured comfort collar with CROSSTECH® black moisture barrier lining	\$48	\$69
CRTT212	4" x 11" contoured throat tab on left side, CROSSTECH black moisture barrier lining, hook and loop closure, with storage tab	\$46	\$62
CLF223	3" self-fabric and 3-layer CROSSTECH split collar with loop (use only with 3-layer CROSSTECH liner)	\$71	\$71
CLF224	4" self-fabric and 3-layer CROSSTECH split collar with loop (use only with 3-layer CROSSTECH liner)	\$78	\$78

\*Stedair liners will get Stedair parts options.

### COAT CUFF REINFORCEMENTS

		Pioneer, Advance, Nomex and Armor AP	PBI Max, PBI Max LP and Flex 7
Item #	Description		
CC701	Leather coat cuff reinforcements (std.)	Std.	Std.
CC700	Self-fabric cuffs	\$16	\$16
CC702	Polymer-coated aramid cuffs	\$16	\$16

### COAT ZIPPER PARTS— Super-Deluxe

		Pioneer, Advance, Nomex and Armor AP	PBI Max, PBI Max LP and Flex 7
Item #	Description		
CC700Z	Self-fabric coat cuff reinforcements	\$23	\$23
CC701Z	Leather coat cuff reinforcements	\$18	\$18
CC702Z	Polymer-coated aramid coat cuff reinforcements	\$23	\$23
CR239Z	4" contoured comfort collar with CROSSTECH black moisture barrier lining	\$60	\$105

**RETAIL PRICE LIST**

Effective February 1, 2023  
Price subject to change without prior notice



# LION Turnouts™ Options — Pants

Note: On leather or polymer-coated aramid parts, specify Gold, Black or Grey.

## Available substitutes for standard parts on structural turnouts (add to base price)

DuPont™  
**Nomex** | DuPont™  
**Kevlar**

Fully compliant with NFPA 1971 and OSHA Standard 29CFR 1910.1030.

### PANTS CUFF REINFORCEMENTS — All models

Item #	Description	Pioneer, Advance, Nomex and Armor AP	PBI Max, PBI Max LP and Flex 7
PC000	Leather cuffs and kick shield	Std.	Std.
PC500	Self-fabric cuffs and kick shield	\$37	\$37
PC504	Polymer-coated aramid cuffs and kick shield	\$31	\$31

### KNEE REINFORCEMENTS — All models

Item #	Description	Pioneer, Advance, Nomex and Armor AP	PBI Max, PBI Max LP and Flex 7
KP644	Leather knees with additional layer of Lite-N-Dri™ cushioning on shell	Std.	Std.
KP221	Leather knees with additional layer of Lite-N-Dri and a layer of silicone foam cushioning on shell	\$145	\$145
KP677	Removable leather knees, Lite-N-Dri™ cushioning	\$131	\$131
KP642	Self-fabric knees with additional layer of Lite-N-Dri cushioning on shell	\$30	\$45
KP220	Self-fabric knees with additional layer of Lite-N-Dri and a layer of silicone foam cushioning on shell	\$172	\$195
KP651	Removable self-fabric knees, Lite-N-Dri cushioning	\$143	\$203
KP646	Polymer-coated aramid knees with additional layer of Lite-N-Dri cushioning on shell	\$29	\$29
KP228	Polymer-coated aramid knees with additional layer of Lite-N-Dri and a layer of silicone foam cushioning on shell	\$168	\$168
KP653	Removable polymer-coated aramid knees, Lite-N-Dri cushioning	\$165	\$165
KP233	SuperFabric® knees with additional layer of Lite-N-Dri cushioning on shell	\$50	\$50
KP234	SuperFabric knees with additional layer of Lite-N-Dri and a layer of silicone foam cushioning on shell	\$168	\$168

### FLY CLOSURES — All models

Item #	Description	Pioneer, Advance, Nomex and Armor AP	PBI Max, PBI Max LP and Flex 7
FLY201A	Hook and D-ring pants closure with hook and loop storm fly closure. Std. on PBGM. (This closure requires a front take-up strap. See option page 30 for price.)	N/C	N/C
FLY230A	(Use when replacing FLY201A) Thermoplastic zipper pants closure with hook and loop storm fly closure. Std. on all but PBGM.	N/C	N/C
FLY201	(Use when replacing FLY230A) Hook and D-ring pants closure with hook and loop storm fly closure. (This closure requires a front take-up strap. See option page 30 for price.)	N/C	N/C
FLY230	(Use when replacing FLY201A) Thermoplastic zipper pants closure with hook and loop storm fly closure	N/C	N/C
FLY204	(Use when replacing FLY201A or FLY230A) Diagonal (wide angle) fly with hook and D-ring and hook and loop closure. (This closure requires a front take-up strap. See option page 30 for price.)	\$36	\$37

\*Stedair liners will get Stedair parts options.

### PANTS ZIPPER PARTS— Super-Deluxe™

Item #	Description	Pioneer, Advance, Nomex and Armor AP	PBI Max, PBI Max LP and Flex 7
FLY230Z	(Use when replacing FLY201A.) Thermoplastic zipper pants closure with hook and loop storm fly closure.	\$13	\$13
FLY201Z	(Use when replacing FLY230A.) Hook and D-ring pants closure with hook and loop storm fly closure. (This closure requires a front take-up strap.)	\$13	\$13

**RETAIL PRICE LIST**

Effective February 1, 2023  
Price subject to change without prior notice



# LION Turnouts™ Add-On Options

Note: On leather or polymer-coated aramid parts, specify Gold, Black or Grey.

## Options that can be added to standard structural turnouts

DuPont™  
**Nomex** | DuPont™  
**Kevlar**

Fully compliant with NFPA 1971 and OSHA Standard 29CFR 1910.1030.

### FRONT TAKE-UP STRAPS — Sold individually

Item #	Description	Pioneer, Advance, Nomex and Armor AP	PBI Max, PBI Max LP and Flex 7
TUP503	Short leather take-up strap with snap hook and D-ring	\$11	\$11
TUP000A	Long leather take-up strap 5/9" buckle with snap hook and D-ring (to be used when no side take-up straps are present) — Standard on LION Turnout Traditional Pants	N/C	N/C
TUP000	Long leather take-up strap 5/9" buckle with snap hook and D-ring (to be used when no side take-up straps are present) — Super Pants™, Super-Deluxe™ Pants, Deluxe High-Back™ Pants and Liberty™ Pants	\$16	\$16
TUP016	Hook and D-ring closure rivet directly to shell with leather backing	\$31	\$31
TUP512	Self-fabric fly take-up with snap hook and D-ring riveted to shell	\$37	\$37

### SIDE TAKE-UP STRAPS — Sold in pairs

Item #	Description	Pioneer, Advance, Nomex and Armor AP	PBI Max, PBI Max LP and Flex 7
TUP700A	Outer shell material take-up straps with hook and loop closure and nickel loop — Standard on Super Pants, Super-Deluxe Pants, Deluxe High-Back Pants and Liberty Pants	N/C	N/C
TUP700	Outer shell material take-up straps with hook and loop closure and nickel loop — Standard on Traditional Pants	\$35	\$35
TUP501	Outer shell material take-up straps with hook and loop closure and nickel loop (pants or coats)	\$36	\$36
TUP506	.5" self-fabric take-up straps with 5/8" postman slides (pants or coats)	\$37	\$37
TUP507	1" x 6" self-fabric take-up straps with hook and loop closure and nickel loop (pants or coats)	\$37	\$37
TUP531	Outer shell material take-up straps with hook and loop closure and two nickel loops	\$37	\$37
TUP704	1" self-fabric take-up straps with 5/8" postman slides (pants or coats)	\$43	\$43

### YOKE REINFORCEMENTS — Shell reinforcements

Item #	Description	Pioneer, Advance, Nomex and Armor AP	PBI Max, PBI Max LP and Flex 7
YR118	11" SemperDri™ quilt yoke and 12" sleeve reinforcement, bi-swing coats only (Super-Deluxe™ and Liberty™)	\$114	\$114

### LEG TABS

Item #	Description	Pioneer, Advance, Nomex and Armor AP	PBI Max, PBI Max LP and Flex 7
LGT000	2 leather leg tabs per leg, with snaps	Std.	Std.
LGT003	2 self-fabric leg tabs per leg, with snaps	\$18	\$18

**RETAIL PRICE LIST**

Effective February 1, 2023  
Price subject to change without prior notice



# LION Turnouts™ Add-On Options

Note: On leather or polymer-coated aramid parts, specify Gold, Black or Grey.

## Options that can be added to standard structural turnouts

DuPont™  
**Nomex** | DuPont™  
**Kevlar**

Fully compliant with NFPA 1971 and OSHA Standard 29CFR 1910.1030.

### FLASHLIGHT/GLOVE STRAPS (EACH)

Item #	Description	Pioneer, Advance, Nomex and Armor AP	PBI Max, PBI Max LP and Flex 7
FLS510	Flashlight strap, 1" x 2", 2-layers self-fabric with snap holder	\$29	\$29
FLS556	Flashlight strap, leather with #703 hook riveted to shell	\$10	\$10
FLS521	Flashlight or glove strap, 1" x 10" self-fabric strap with 1" x 3" hook and loop closure, X-stitched to shell	\$29	\$29
FLS503	Flashlight strap, 1.25" x 7", 1" x 2" hook and loop closure, #703 hook with self-fabric holder riveted 5" above strap, X-stitched to shell	\$35	\$35
FLS554	Flashlight strap, 1.25" x 8.5" with 1" x 2" hook and loop closure, #703 hook with self-fabric holder bartacked 5" above strap, X-stitched to shell	\$35	\$35
FLS558	Flashlight or glove strap, 2" x 10" self-fabric strap with 2" x 3" hook and loop closure, X-stitched to shell	\$30	\$31

### MIC TABS (EACH)

Item #	Description	Pioneer, Advance, Nomex and Armor AP	PBI Max, PBI Max LP and Flex 7
MT551	Mic tab .5" x 3", self-fabric with hard leather inside, bartack each end	\$30	\$31
MT550	Mic tab 1" x 2", self-fabric, bartack each end	\$13	\$13
MT503	Mic tab 1" x 3", self-fabric, bartack each end	\$11	\$11
MT548	Mic tab 1" x 3", self-fabric with polymer-coated aramid inside, bartack each end	\$29	\$30
MT546	Mic tab 1" x 3.5", self-fabric, bartack each end (4 total)	\$16	\$16
MT512	Mic tab 1.5" x 3", self-fabric, bartack each end	\$16	\$16
MT501	Mic tab 2" x 5", self-fabric, bartack each end (4 total)	\$18	\$30

### PASS DEVICES (EACH)

Item #	Description	Pioneer, Advance, Nomex and Armor AP	PBI Max, PBI Max LP and Flex 7
PD006	PASS device holder 2" x 5", self-fabric with leather inside	\$31	\$32
PD501	PASS device holder 2" x 4", self-fabric with leather inside, #701 hook riveted through PASS device and shell on left side	\$32	\$36

### INTEGRATED BELTS AND HARNESSSES

Item #	Description	Pioneer, Advance, Nomex and Armor AP	PBI Max, PBI Max LP and Flex 7
BHS062	LION Aeroscape Escape belt with right closure, NFPA 1983 certified belt. Available for waist sizes 28-62 only. <b>Note: Requires horizontal belt loops BL079 and vertical belt loops BL081.</b>	\$338	\$338
BHS063	LION Aeroscape Escape belt with left closure, NFPA 1983 certified belt. Available for waist sizes 28-62 only. <b>Note: Requires horizontal belt loops BL079 and vertical belt loops BL081.</b>	\$338	\$338
BHS064	LION Aeroscape Integrated Class II harness with right closure, NFPA 1983 certified. Available for waist sizes 28-62 only. <b>Note: Requires horizontal belt loops BL079 and vertical belt loops BL078 and welts PM0715.</b>	\$620	\$620
BHS065	LION Aeroscape Integrated Class II harness with left closure, NFPA 1983 certified. Available for waist sizes 28-62 only. <b>Note: Requires horizontal belt loops BL079 and vertical belt loops BL078 and welts PM0715.</b>	\$620	\$620
BHS066	LION Aeroscape Class II A-Frame harness with right closure, NFPA 1983 certified. Available for waist sizes 28-62 only. <b>Note: Requires horizontal belt loops BL080 and vertical belt loops BL078 and welts PM0715.</b>	\$846	\$846
BHS067	LION Aeroscape Class II A-Frame harness with left closure, NFPA 1983 certified. Available for waist sizes 28-62 only. <b>Note: Requires horizontal belt loops BL080 and vertical belt loops BL078 and welts PM0715.</b>	\$846	\$846
BL078	Five self-fabric belt loops that close with 1" x 2" hook and loop, 1/2" down from top of pants. See drawing for belt loop placement. For Aeroscape Class II and A-Frame harnesses.	\$50	\$50
BL079	One 1.75" x 4.5" self-fabric belt loop with hook and loop closure and one 1.5" x 5" self-fabric belt loop with hook and loop closure, see CAD drawing for placement. For Aeroscape Class II Harness and Escape belt.	\$38	\$38
BL080	One 1.75" self-fabric belt loop with hook and loop closure and one 1.5" x 5" self-fabric with hook and loop closure, see CAD drawing. For Aeroscape A-Frame.	\$50	\$50
BL081	Five self-fabric belt loops with hook and loop closure, bartacked 1/2" down from top of pants. See CAD drawing for belt loop placement. For Aeroscape belt.	\$50	\$50
PM0715	Two horizontal PCA welts with self-fabric folded over inside for reinforcement for Aeroscape harnesses.	\$44	\$44
BHS009	Integrated lumbar support (only available on Super Pants™ model). Rear pockets and wide angle flies not available with this option.*	\$118	\$118
BHS013	2" Kevlar® belt with 2" self locking thermoplastic buckle (recommend to use with # BL007).	\$115	\$115

\* Integrated lumbar support (only available on Super Pants™ model). Rear pockets and wide angle flies not available with this option.  
Consult customer service for availability of pockets with this option.

**RETAIL PRICE LIST**

Effective February 1, 2023  
Price subject to change without prior notice



# LION Turnouts™ Add-On Options

Note: On leather or polymer-coated aramid parts, specify Gold, Black or Grey.

## Options that can be added to standard structural turnouts

DuPont™  
**Nomex** | DuPont™  
**Kevlar**

Fully compliant with NFPA 1971 and OSHA Standard 29CFR 1910.1030.

### PERSONAL RESCUE SYSTEM — A Class II Harness or Escape Belt is necessary for the Personal Rescue System.

Item #	Description	Pioneer, Advance, Nomex and Armor AP	PBI Max, PBI Max LP and Flex 7
BHS030	Assembled escape kit includes 1-50' rope, 1-descender, 1-snap link, 1-tether, 1-carabiner and 1-escape anchor hook	\$1347	\$1347
BHS033	Assembled escape kit includes 1-50' webbing, 1-descender, 1-snap link, 1-tether, 1-carabiner and 1-escape anchor hook	\$1347	\$1347
BL020	Three 1.5" x 3" breakaway tether tabs bartacked on one end with hook and loop fasteners on the other; one set vertically at waist, two set horizontally below waist	\$32	\$32
BDP901	10" x 10" x 2" removable split bellows pocket and flap with Kevlar® twill fully lined, all four sides, 4" up inside pocket, self-fabric 4" up outside on pocket, one piece 1.5" x 10" loop on pocket and three pieces 1.5" x 3" hook on flap, antenna notch on small flap, pocket sewn on 14" x 14" patch with .75" loop, self-fabric frame with .75" hook	\$231	\$337
FBP1030	10.5" x 10" x 9" x 2.25" fully lined Kevlar twill 5" up inside, 9" x 4" inside flap with 1 piece hook and loop inside pocket, 7" x 6.5" patch outside pocket divided equally into two 3.5" slots on each side for hook storage. 11.75" x 8.5" antenna notched flap with 1 piece 7" x 2" hook on flap. 1 piece 7" x 2" loop on front pocket. (FBP1037 10.5" x 8" x 2.25" for 26" and below inseams).	\$172	\$247
FBP1041	10.5" x 10" x 8" x 2.25" fully lined Kevlar twill lining 5" up inside pocket, 9" x 4" inside flap with one piece hook and loop inside pocket, 7" x 6.5" patch outside pocket divided equally into two 3.5" slots on each side for hook storage. A 1" x 4" self-material strap with male snap is bartacked to shell. A female logo snap is placed on the front pocket corner. 11.75" x 8.5" flap with one piece 7" x 2" hook on flap. One piece 7" x 2" loop on front pocket.	\$193	\$248
PMO233	Ladder tether assembly option, certified with Class II harness.	\$240	\$240

### BELT LOOPS

Item #	Description	Pioneer, Advance, Nomex and Armor AP	PBI Max, PBI Max LP and Flex 7
BL002	Five self-fabric belt loops, each made using two separate 1" x 3" straps that close with 1" x 2" hook and loop. Three loops bartacked even at waist and two at crotch (For Gemtor or similiar harness).	\$82	\$82
BL007	Three belt loops, 4" wide by 3.5" high, 2-layer self-fabric, double stitched to pants shell, bartacked all four corners. Std. on PVFM and PVFF pants model.	\$70	\$78
BL008	Five belt loops, .5" wide by 4.5" high, self-fabric	\$56	\$56
BL021	Nine self-fabric belt loops, each made using two separate 1" x 3" straps that close with 1" x 2" hook and loop. Seven loops bartacked even at waist and two at crotch (for Gemtor or similiar harness).	\$118	\$118
BL028	1" x 6" self-material strap with 1 piece of 1" x 2" hook set to one end and one piece of loop set to other end. The strap is set to shell angled between the pocket and welt using three bartacks. (This strap is to guide the PRS tether from the pocket to the harness or belt anchor point.)	\$13	\$13



## RETAIL PRICE LIST

Effective February 1, 2023  
Price subject to change without prior notice



# LION Turnouts™ Add-On Options

Note: On leather or polymer-coated aramid parts, specify Gold, Black or Grey.

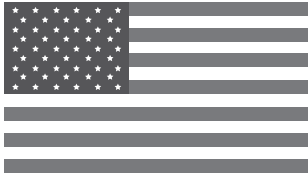
## Options that can be added to standard structural turnouts

DuPont™  
**Nomex.** | DuPont™  
**Kevlar.**

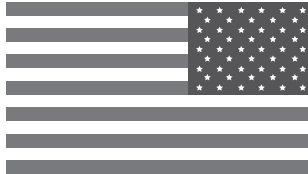
Fully compliant with NFPA 1971 and OSHA Standard 29CFR 1910.1030.

### MISCELLANEOUS OPTIONS AND HARDWARE

Item #	Description	Pioneer, Advance, Nomex and Armor AP	PBI Max, PBI Max LP and Flex 7
CLW225	Ever-Dry™ Wrist Shield System™ with elastic	N/C	N/C
PL0202	1" elastic sewn to thermal liner leg bottom	\$37	\$37
PM0210	4" self-fabric snap tabs on waist, two on the front and two on the back for suspender attachment (see suspenders page 42)	\$40	\$40
PM0542	Boot-cut pants leg	\$32	\$32
EM1	American flag emblem sewn on (stars on upper left corner)	\$36	\$36
EM5	American flag emblem sewn on (stars on upper right corner)	\$36	\$36
MF011	Utility ring (one D-ring riveted to shell)	\$11	\$11
MF003	Reverse snap riveted to shell with leather backed rivets	\$11	\$11



EM1 American Flag



EM5 American Flag

To be in compliance with proper flag etiquette, it is appropriate to wear an American flag patch on the left or right sleeve. When worn on the left sleeve, the union would appear toward the front and the stripes would run horizontally toward the back (EM1). When worn on the right sleeve, it is considered proper to reverse the design so that the union is at the observer's right to suggest that the flag is flying in the breeze as the wearer moves forward (EM5).

## RETAIL PRICE LIST

Effective February 1, 2023  
Price subject to change without prior notice



# Pockets

## For use with LION Turnouts™ Structural Coats and Pants

DuPont™  
**Nomex** | **Kevlar**

Note: On leather or polymer-coated aramid parts, specify Gold, Black or Grey.

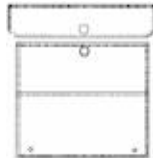
Fully compliant with NFPA 1971 and OSHA Standard 29CFR 1910.1030.



Radio Pocket



Facemask Pocket



Coat Patch Pocket

### RADIO/FLASHLIGHT POCKETS (EACH)

Item #	Description (w x h x d)	Pioneer, Advance, Nomex and Armor AP	PBI Max, PBI Max LP and Flex 7
RP511	3.5" x 9" x 2", poly/cotton lined and 1" x 2" hook and loop closure, antenna notch	\$68	\$79
RP514	3.5" x 9" x 2", poly/cotton lined and 1" x 2" hook and loop closure	\$62	\$78
RP671	3.5" x 9" x 2", pocket and flap poly/cotton lined, 2" x 3" hook and loop closure	\$68	\$79
RP800	3.5" x 9" x 2", pocket and flap poly/cotton lined, one piece 1" x 2" hook and loop closure, antenna notch	\$71	\$80
RP862	3.5" x 9" x 1", poly/cotton fully lined 3 sides inside and leather 5" up outside, 1.5" x 3" hook and loop closure	\$68	\$83
RP783	3.5" x 8" x 2", all four sides of pocket and flap poly/cotton lined, 2" x 3" hook and loop closure, antenna notch	\$71	\$80
RP625	3.5" x 8" x 2", pocket and flap poly/cotton lined, 2" x 3" hook and loop closure	\$62	\$78
RP772	3.5" x 7.5" x 2", pocket and flap poly/cotton lined, 2" x 2" loop on pocket, 2" x 3" hook on flap	\$56	\$77
RP719	3.5" x 7" x 1.5", all four sides of pocket lined with Kevlar® twill, 2" x 3" hook and loop closure, antenna notch both sides of flap	\$73	\$82
RP553	3" x 6.5" x 2", poly/cotton lined, 1" x 2" hook and loop closure	\$50	\$70
RP842	4" x 9" x 2", poly/cotton lined, 2" x 3" hook and loop closure, antenna notch	\$71	\$84

### FACEMASK POCKETS (EACH)

Item #	Description (w x h x d)	Pioneer, Advance, Nomex and Armor AP	PBI Max, PBI Max LP and Flex 7
FMP530	10.5" x 10" x 5" facemask pocket with thermoplastic zipper	\$97	\$131
FMP527	7.5" x 9" x 6" facemask pocket with thermoplastic zipper	\$114	\$153
FMP529	7.5" x 10" x 5" facemask pocket with thermoplastic zipper	\$97	\$133
FMP535	7.5" x 10" x 5" facemask pocket with thermoplastic zipper. One piece 1.5" x 3.5" loop and 2 male snaps closure on pocket side. The radio pocket is to be sewn to coat shell and around facemask pocket at top edge (to allow access from outside).	\$158	\$224

### GLOVE POCKETS (EACH)

Item #	Description (w x h x d)	Pioneer, Advance, Nomex and Armor AP	PBI Max, PBI Max LP and Flex 7
MP541	9" x 10" internal glove pocket with polymer-coated aramid welt set under storm flap (must have 5" storm flap set on left side)	\$80	\$80
MP713	3" x 5.5" patch pocket and flap with 1" slot at leading edge of flap, one piece 1" x 2" loop on pocket and one piece 1" x 2" hook on flap	\$40	\$45
MP716	3.25" x 4.5" x 1" miscellaneous pocket with poly/cotton fully lined all 3 sides inside, 1" x 2" hook and loop closure	\$45	\$56
MP2020 R/L	8.5" x 11.5" chest face pocket with 10" thermoplastic zipper and PCA zipper pull tab. Pocket sets vertical opening.	\$95	\$95

### COAT PATCH POCKETS (PAIR)

Item #	Description (w x h x d)	Pioneer, Advance, Nomex and Armor AP	PBI Max, PBI Max LP and Flex 7
CPP000	10" x 10" with <b>leather</b> 5" up outside and 3" up on shell, snap closure	\$110 pr.	\$146 pr.
CPP111	10" x 10" with <b>leather</b> 5" up inside, snap closure	\$110 pr.	\$146 pr.

## RETAIL PRICE LIST

Effective February 1, 2023  
Price subject to change without prior notice



## Pockets

### For use with LION Turnouts™ Structural Coats and Pants

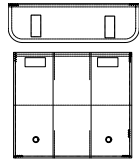
DuPont™  
**Nomex** | DuPont™  
**Kevlar**

Note: On leather or polymer-coated aramid parts, specify Gold, Black or Grey.

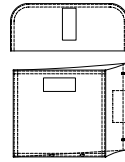
Fully compliant with NFPA 1971 and OSHA Standard 29CFR 1910.1030.



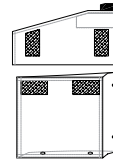
Patch Handwarmer  
with flap set at angle



HP567



Semi-Bellows and  
Handwarmer combination



HP598

#### HANDWARMER POCKETS (PAIR)

Item #	Description (w x h x d)	Pioneer, Advance, Nomex and Armor AP	PBI Max, PBI Max LP and Flex 7
HP573	8.5" x 8" patch and handwarmer combination with expandable 2" pleat, self-fabric 4.5" up inside on pocket. Self-fabric backing. 1.5" x 2.75" hook and loop closure.	\$194 pr.	\$272 pr.
HP589	8" x 8" x 2" semi-bellows and handwarmer combination. 6" opening on bellows side, self-fabric backing, Kevlar® twill fully lined all three sides inside bellows pocket. One piece 2" x 7" loop and two pieces 2" x 2" hook closure.	\$178 pr.	\$228 pr.
HP576	9" x 9" x 1.5" semi-bellows and handwarmer combination. 6" opening on bellows side, one piece 1" x 2" hook and loop closure for both openings. <i>Do not use for coats shorter than 32"</i>	\$164 pr.	\$232 pr.
HP512	9" x 9" x 1.5" semi-bellows handwarmer fully lined with Arafil® with one piece 1.5" x 2.75" hook and loop closure. <i>Do not use for coats shorter than 32" - use HP581 (9" x 8" x 1.5") (same price)</i>	\$156 pr.	\$190 pr.
HP009	9" x 9" x 1.5" semi-bellows handwarmer with one piece 1.5" x 3" hook and loop closure. <i>Do not use for coats shorter than 32" - use HP574 (9" x 8" x 1.5") (same price)</i>	\$124 pr.	\$158 pr.
HP564	9" x 9" x 2" full bellows and handwarmer combination. 6" opening on side with one piece 1.5" x 6" hook and loop and one piece 1.5" x 9" hook and loop closure for pocket. <i>Do not use for coats shorter than 32" - use HP572 (9" x 8" x 2") (same price)</i>	\$204 pr.	\$272 pr.
HP598	9" x 9" x 2" semi-bellows and handwarmer combination. 6" opening on bellows side, Kevlar twill backing, handwarmer lined with SemperDri™. Two pieces 1.5" x 3" hook and loop closure, 2-layers GIC/E-88™ foam inside flap corner, PCA pull tab. <i>Do not use for coats shorter than 32" - use HP597 (9" x 7" x 2") (same price)</i>	\$254 pr.	\$298 pr.
HP604	9" x 9" x 2" semi-bellows and handwarmer combination. 6" opening on bellows side, Kevlar twill backing, handwarmer lined with fleece. Two pieces 1.5" x 3" hook and loop closure, 2-layers GIC/E-88 foam inside flap corner, PCA pull tab. <i>Do not use for coats shorter than 32" - use HP603 (9" x 7" x 2") (same price)</i>	\$260 pr.	\$300 pr.
HP579	9" x 8" x 2" semi-bellows handwarmer fully lined with Kevlar with one piece 1.5" x 6" loop on pocket and two pieces 1.5" x 2" hook on flap	\$160 pr.	\$206 pr.
HP567	8.5" x 9" patch pocket and handwarmer combination with expandable 2" pleat. Pocket lined 4.5" inside with self-fabric, two pieces 1.5" x 2.75" hook and loop closure on flap. <i>Do not use for coats shorter than 32" - use HP573 (8.5" x 8") (same price)</i>	\$194 pr.	\$272 pr.
HP502	8" x 8" handwarmer pocket, Arafil lined, one piece 1" x 2" hook and loop closure	\$88 pr.	\$112 pr.
HP565	8" x 8" x 2" semi-bellows and handwarmer combination. 6" opening on bellows side, one piece 1" x 2" hook and loop closure for both openings	\$160 pr.	\$206 pr.

## RETAIL PRICE LIST

Effective February 1, 2023  
Price subject to change without prior notice



# Pockets

## For use with LION Turnouts™ Structural Coats and Pants

DuPont™  
**Nomex** | **Kevlar**

Note: On leather or polymer-coated aramid parts, specify Gold, Black or Grey.

Fully compliant with NFPA 1971 and OSHA Standard 29CFR 1910.1030.



Semi-Bellows Pocket

### SEMI-BELLOWS POCKETS (PAIR)

Item #	Description (w x h x d)	Pioneer, Advance, Nomex and Armor AP	PBI Max, PBI Max LP and Flex 7
SBP582	10" x 10" x 2" Kevlar® twill lined on three sides and 3" up on shell, one piece 1.5" x 10" loop on pocket, two pieces 1.5" x 2.75" hook on flap	\$184 pr.	\$246 pr.
SBP610	10" x 10" x 2" lined with Kevlar twill 5" up all four sides, one piece 1.5" x 10" loop on pocket, two pieces 1.5" x 3" hook on flap	\$178 pr.	\$232 pr.
SBP535	10" x 8" x 1.5" fully lined all four sides with Kevlar twill, two pieces 2" x 3" hook and loop closure on flap	\$204 pr.	\$236 pr.
SBP616	10" x 8" x 1.5" lined with Kevlar twill all four sides, two pieces 2" x 3" loop on pocket, two pieces 2" x 3" hook on flap. Pocket will be placed to hang 3" below hem.	\$266 pr.	\$290 pr.
SBP620	9" x 8" x 2" with pleat, fully lined with Kevlar twill on three sides, two pieces 1.5" x 3" hook and loop closure, 2-layers GIC/E-88™ foam inside flap corner and 1" x 2" PCA pull tab	\$184 pr.	\$246 pr.
SBP518	8" x 8" x 2" fully lined all four sides with Kevlar twill, one piece 1" x 2" hook and loop closure	\$160 pr.	\$190 pr.
SBP552	8" x 8" x 2" lined with Kevlar twill three sides 4" up and 3" up on shell, one piece 1" x 2" hook and loop closure	\$156 pr.	\$178 pr.
SBP548	8" x 10" x 2" fully lined with Kevlar twill all four sides inside. One piece 1" x 8" loop and three pieces 1" x 3" hooks closure.	\$168 pr.	\$232 pr.
SBP590	7" x 9" x 1.5" fully lined with Kevlar twill three sides inside pocket, one piece 1" x 2" hook and loop closure	\$156 pr.	\$178 pr.
SBP614	8" x 8" x 2" semi-bellows pocket with Kevlar twill fully lined all four sides inside pocket. One piece 1" x 7" loop on pocket, two pieces 1" x 3" hook on flap.	\$158 pr.	\$186 pr.

### ESCAPE SYSTEM POCKETS (EACH)

Item #	Description (w x h x d)	Pioneer, Advance, Nomex and Armor AP	PBI Max, PBI Max LP and Flex 7
FBP1030	10.5" x 10" x 9" x 2.25" fully lined Kevlar twill 5" up inside, 9" x 4" inside flap with one piece hook and loop inside pocket, 7" x 6.5" patch outside pocket divided equally into two 3.5" slots on each side for hook storage. 11.75" x 8.5" antenna notched flap with one piece 7" x 2" hook on flap. one piece 7" x 2" loop on front pocket. (FBP1037 10.5" x 8" x 2.25" for 26" and below inseams).	\$172 ea.	\$247 ea.
BDP901	10" x 10" x 2" removable split bellows pocket and flap with Kevlar twill fully lined, all four sides, 4" up inside pocket, self-fabric 4" up outside on pocket, one piece 1.5" x 10" loop on pocket and three pieces 1.5" x 3" hook on flap, antenna notch on small flap, pocket sewn on 14" x 14" patch with .75" loop, self-fabric frame with .75" hook	\$231 ea.	\$337 ea.
BDP902	10" x 10" x 2" split bellows pocket and flap with Kevlar twill lining inside of pocket 4" on all four sides, self-fabric open compartment, 5" reinforcement up outside on pocket. One piece 1" x 1.5" hook inside compartment, one piece 1" x 1.5" loop and 1.5" x 10" loop on pocket, two pieces 1.5" x 3" hook on the large flap, one piece 1.5" x 3" hook on the small flap with antenna notch.	\$136 ea.	\$174 ea.
FBP1041	10.5" x 10" x 8" x 2.25" fully lined Kevlar twill lining 5" up inside pocket, 9" x 4" inside flap with 1 piece hook and loop inside pocket, 7" x 6.5" patch outside pocket divided equally into two 3.5" slots on each side for hook storage. A 1" x 4" self-material strap with male snap is bartacked to shell. A female logo snap is placed on the front pocket corner. 11.75" x 8.5" flap with one piece 7" x 2" hook on flap. One piece 7" x 2" loop on front pocket.	\$193 ea.	\$248 ea.

## RETAIL PRICE LIST

Effective February 1, 2023  
Price subject to change without prior notice



# Pockets

## For use with LION Turnouts™ Structural Coats and Pants

DuPont™  
**Nomex** | DuPont™  
**Kevlar**

Note: On leather or polymer-coated aramid parts, specify Gold, Black or Grey.

Fully compliant with NFPA 1971 and OSHA Standard 29CFR 1910.1030.



Full Bellows Pocket

### FULL BELLOWS POCKETS (PAIR)

Item #	Description (w x h x d)	Pioneer, Advance, Nomex and Armor AP	PBI Max, PBI Max LP and Flex 7
FBP579	10" x 10" x 2" fully lined with Kevlar® twill on three sides, one piece 1.5" x 10" loop on pocket and two pieces 1.5" x 2.75" hook on flap (can be paired with BDP755)	\$194 pr.	\$262 pr.
FBP509	10" x 10" x 2" with leather 5" up outside and 3" up on shell, one piece 1" x 10" loop on pocket and three pieces 1" x 4" hook on flap	\$194 pr.	\$262 pr.
FBP024	10" x 10" x 2" with self-fabric 5" up inside pocket and 5" up on shell, two pieces 1.5" x 3" hook and loop closure	\$232 pr.	\$298 pr.
FBP702	10" x 10" x 2" lined with Kevlar twill 5" on three sides up on inside, one piece 2" x 6" hook and loop closure	\$236 pr.	\$290 pr.
FBP603	10" x 10" x 2" fully lined with Kevlar twill on three sides and 3" up on shell, one piece 1.5" x 8" loop on pocket and two pieces 1.5" x 2.75" hook on flap (can be paired with BDP560)	\$232 pr.	\$286 pr.
FBP616	10" x 10" x 2" fully lined with Kevlar twill on three sides and polymer-coated aramid 5" up outside, one piece 1.5" x 8" loop on pocket and two pieces 1.5" x 2.75" hook on flap (can be paired with BDP781)	\$254 pr.	\$300 pr.
FBP651	10" x 10" x 2" fully lined with Kevlar twill all four sides, one piece 1" x 10" loop on pocket and three pieces 1" x 3" hook on flap (can be paired with BDP775)	\$232 pr.	\$286 pr.
FBP681	10" x 10" x 2" fully lined with Kevlar twill all four sides, self-fabric 5" up outside, one piece 2" x 10" loop on pocket and three pieces 1.5" x 3" hook on flap (can be paired with BDP780)	\$260 pr.	\$336 pr.
FBP995	10" x 10" x 2" lined with Kevlar twill 5" all four sides, one piece 1.5" x 10" loop on pocket and three pieces 1.5" x 2.75" hook on flap	\$184 pr.	\$236 pr.
FBP586	10" x 10" x 2" with leather 5" up outside and 3" inside on shell, one piece 1" x 10" loop on pocket and three pieces 1" x 3" hook on flap (can be paired with BDP502 or BDP520)	\$190 pr.	\$260 pr.
FBP1000	10" x 8" x 2" fully lined with Kevlar twill all four sides inside pocket, one piece 1" x 10" loop on pocket and three pieces 1" x 3" hook on flap	\$206 pr.	\$262 pr.
FBP686	10" x 7" x 2" fully lined with Kevlar twill all four sides, one piece 2" x 10" loop on pocket and three pieces 1.5" x 3" hook on flap	\$190 pr.	\$248 pr.
FBP584	9" x 8" x 10" x 2" fully lined with Kevlar twill all four sides, two pieces 2" x 2" hook and loop closure	\$232 pr.	\$282 pr.
FBP574	8" x 8" x 2" fully lined with Kevlar twill three sides and 3" up on shell, one piece 1.5" x 8" loop on pocket and two pieces 1.5" x 2.75" hook on flap, boxed flap (can be paired with BDP546)	\$190 pr.	\$248 pr.
FBP550	8" x 8" x 2" with leather 5" up outside and 3" up on shell, one piece 1.5" x 8" loop on pocket and three pieces 1.5" x 3" hook on flap, boxed flap	\$164 pr.	\$228 pr.
FBP697	8" x 8" x 2" lined with Kevlar twill all four sides 5" up, one piece 1.5" x 8" loop on pocket and two pieces 1.5" x 3" hook on flap	\$178 pr.	\$236 pr.
FBP654	8" x 8" x 2" fully lined with Kevlar twill all four sides, one piece 1.5" x 8" loop on pocket and two pieces 1.5" x 3" hook on flap	\$190 pr.	\$248 pr.

## RETAIL PRICE LIST

Effective February 1, 2023  
Price subject to change without prior notice

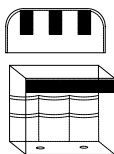


## Pockets

For use with LION Turnouts™ Structural Coats and Pants

DuPont™  
**Nomex.** | DuPont™  
**Kevlar.**

Fully compliant with NFPA 1971 and OSHA Standard 29CFR 1910.1030.



Full Bellows Tool Pocket

### TOOL POCKETS (PAIR)

Item #	Description (w x h x d)	Pioneer, Advance, Nomex and Armor AP	PBI Max, PBI Max LP and Flex 7
FBP1002	9" x 10" x 2" fully lined with Kevlar® twill all four sides. Two additional layers of outer shell fabric on shell side of pocket. First row is 6.5" high and second row is 4.5" high. Both layers are stitched in 3" increments to create six compartments. One piece 2" x 9" loop on pocket and three pieces 1.5" x 3" hook on flap.	\$290 pr.	\$348 pr.
FBP1045	9" x 10" x 2" full bellows pocket with 5" PCA reinforcement on outside of pocket, fully lined with Kevlar twill all four sides inside, two layer outer shell fabric lined with Kevlar twill on shell inside pocket. First layer 6.5" high, Second layer 4.5" high, both layers stitched in 3" increments to form six compartments. One piece 2" x 9" loop on pocket, three pieces 1.5" x 3" hook on flap. 2-layers GIC/E88 inside flap corner, 1" x 2" PCA pull tab.	\$328 pr.	\$372 pr.
HP628	9" x 8" x 2" semi-bellows and handwarmer combination pocket with 6" opening on bellows side pocket lined with Kevlar and Kevlar backing, handwarmer lined with SemperDri™; two additional layers of outer shell fabric lined with Kevlar on the inside pocket, first layer 6.5" high, second layer 4.5" high. Both layers stitched in 3" increments to form six compartments. Two pieces of 1.5" X 3" loop on pocket and two pieces 1.5" x 3" hook on flap, 2-layers of Lite-N-Dri™ inside flap corner and PCA pull tab.	\$328 pr.	\$426 pr.
SBP622	8" x 8" x "2 semi-bellows pocket with inside fully lined on all four sides with Kevlar twill. Self-fabric 5" up on outside of pocket to form three compartments, 4" on bellow side, 1" middle and 3" front side. Two pieces of 1" x 2" loop on pocket and two pieces 1" x 2" hook on flap. 9" x 3.5" flap.	\$206 pr.	\$262 pr.

**RETAIL PRICE LIST**

Effective February 1, 2023  
Price subject to change without prior notice



# Pockets

**For use with LION Turnouts™ Structural Coats and Pants**

DuPont™  
**Nomex** | DuPont™  
**Kevlar**

Fully compliant with NFPA 1971 and OSHA Standard 29CFR 1910.1030.



Split Bellows Pocket



Pants Patch Pockets

**SPLIT BELLOWS POCKETS (PAIR)**

Item #	Description (w x h x d)	Pioneer, Advance, Nomex and Armor AP	PBI Max, PBI Max LP and Flex 7
BDP520	10" x 10" x 2" with split flap and leather 5" up outside pocket and 3" up inside on shell, 1" x 10" loop on pocket and three pieces 1" x 3" hook on flap (can be paired with FBP586)	\$216	\$272
BDP560	10" x 10" x 2" fully lined with Kevlar® twill on three sides and 3" up on shell with 1.5" x 8" loop on pocket and two pieces 1.5" x 2.75" hook on flap (can be paired with FBP603)	\$206	\$268
BDP755	10" x 10" x 2" fully lined with Kevlar twill on three sides with 1.5" x 10" loop on pocket and two pieces 1.5" x 2.75" hook on flap (can be paired with FBP579)	\$216	\$272
BDP766	10" x 10" x 2" with split flap and antenna notch at each end of 3" section on flap, fully lined with Kevlar twill on three sides and 5" up inside pocket, one piece 1.5" x 10" loop on pocket and three pieces 1.5" x 4" hook on flap (can be paired with FBP586)	\$236	\$300
BDP775	10" x 10" x 2" fully lined with Kevlar twill all four sides, 1" x 10" loop on pocket and three pieces 1" x 3" hook on flap (can be paired with FBP651)	\$240	\$298
BDP910	10" x 8" x 2" fully lined with Kevlar twill all four sides, 1.5" x 10" loop on pocket and two pieces 1.5" x 3" hook on flap (can be paired with FBP652)	\$236	\$316
BDP546	8" x 8" x 2" fully lined with Kevlar twill on three sides and 3" up on shell with 1.5" x 8" loop on pocket and two pieces 1.5" x 2.75" hook on flap, boxed flap (can be paired with FBP574)	\$194	\$254
BDP895	9" x 10" x 2" fully lined with Kevlar twill all four sides, one piece 2" x 9" loop on pocket and three pieces 1.5" x 3" hook on flap	\$254	\$300
BDP902	10" x 10" x 2" split bellows pocket and flap with Kevlar twill lining inside of pocket 4" on all four sides, self-fabric open compartment, 5" reinforcement up outside on pocket. One piece 1" x 1.5" hook inside compartment, one piece 1" x 1.5" loop and 1.5" x 10" loop on pocket, two pieces 1.5" x 3" hook on the large flap, one piece 1.5" x 3" hook on the small flap with antenna notch.	\$272	\$348
BDP908	9" x 8" x 10" x 1" split bellows pocket with Kevlar twill lining all four sides, two pieces 2" x 2" loop on pocket and two pieces 2" x 2" hook on flap. Inside of pocket divided in half vertically with Kevlar twill to be attached with three snaps to front side of pocket and sewn to middle of back pocket. Three snaps on inside top, middle, bottom right edge of pocket corresponding to snaps on divider.	\$262	\$336

**PANTS PATCH POCKETS\* (PAIR)**

Item #	Description (w x h x d)	Pioneer, Advance, Nomex and Armor AP	PBI Max, PBI Max LP and Flex 7
PPP016	8" x 8" pants patch pocket with snap closure, two drainage eyelets	\$80	\$100
PPP537	6.5" x 6" pants patch pocket with 1" x 2" hook and loop closure	\$78	\$92
PPP553	6.5" x 4" pants patch pocket with 1" x 2" hook and loop closure	\$74	\$84

\* Cannot have patch pockets with lumbar support option. Patch pockets can be no taller than 6.5" on pants with take-up straps.



## RETAIL PRICE LIST

Effective February 1, 2023

Price subject to change without prior notice



# Aero Super-Deluxe™ Coat and Pants

Freedom® Design



**Coat: Male Models CSTM-29, CSTM-305, CSTM-32, CSDM-335 and CSDM-35 — Female Models CSTF-29 and CSDF-32**

**Pants: Male Models PSDM — Female Models PSDF**

### Standard on coat:

- Incorporates LION's Structural Turnout Features
- Bi-swing back
- Self-material cuff, shoulder and elbow reinforcements
- Thermoplastic zipper with hook and loop storm flap closure
- 8" over-the-hand Nomex®/Kevlar® IsoDri® wristlets (on K3, K7 and K9 liner systems)
- 8" over-the-hand Kevlar/Spandex® wristlets (on D7 and D9 liner systems)
- Drag Rescue Device (DRD)
- Liner Inspection System

### Standard on pants:

- Low-rise waist
- Self-material knee with Lite-N-Dri™ cushioning, cuff and kick shield reinforcements
- External self-fabric take-up straps
- Thermoplastic zipper with hook and loop storm fly closure
- LION's exclusive SemperDri™ System
- Liner Inspection System

**Headgear:** See LION Helmet Price List

**Gloves:** See LION Glove Price List

Fully compliant with NFPA 1971 proximity firefighting.

### COAT CONSTRUCTION — Male Models CSTM-29, CSTM-305, CSTM-32, CSDM-335 and CSDM-35 Female Models CSTF-29 and CSDF-32

Pockets NOT INCLUDED in prices Reflective trim may not be added to proximity garments			8.5 oz. Para-aramid Aluminized Knit
			\$1,604
D3	Traditional	\$934	\$2,538
D7	Traditional	\$1,097	\$2,701
D9	Traditional	\$934	\$2,538
K3	Traditional	\$1,274	\$2,878
K7 <sup>†</sup>	Traditional	\$1,442	\$3,046
K9 <sup>†</sup>	Traditional	\$1,274	\$2,878

### PANTS CONSTRUCTION — Male Model PSDM Female Model PSDF

Pockets and suspenders NOT INCLUDED in prices Reflective trim may not be added to proximity garments			8.5 oz. Para-aramid Aluminized Knit
			\$1,198
D3	Traditional	\$639	\$1,837
D7	Traditional	\$771	\$1,969
D9	Traditional	\$639	\$1,837
K3	Traditional	\$872	\$2,070
K7 <sup>†</sup>	Traditional	\$997	\$2,195
K9 <sup>†</sup>	Traditional	\$872	\$2,070

**IMPORTANT NOTE:** For NFPA and OSHA compliant garment, the outer shell and the liner system must be combined — add prices together for full garment. The wearer must check the coat/pants overlap to assure adequate protection. A coat length of 29" or shorter cannot accommodate a pocket larger than 8" x 8".  
<sup>†</sup> IsoDri liner system.

Available options for Aero Super-Deluxe coat and pants on page 41. Suspenders options on page 42.

**RETAIL PRICE LIST**

Effective February 1, 2023  
Price subject to change without prior notice



## Options and Pockets

**For use with custom aluminized models only  
(all available options listed here)**

Fully compliant with NFPA 1971.

**POCKETS (all construction materials are 8.5 oz. Para-aramid aluminized knit unless noted otherwise)**

Item #	Description (w x h x d)	Price	Item #	Description (w x h x d or w x h)	Price
RP514	Radio/flashlight pockets, 3.5" x 9" x 2", poly/cotton lined and 1" x 2" hook and loop closure	\$78 ea.	HP502	8" x 8" handwarmer pocket, Arafil® lined, one piece 1" x 2" hook and loop closure	\$112 pr.
RP511	Radio/flashlight pockets, 3.5" x 9" x 2", poly/cotton lined and 1" x 2" hook and loop closure, antenna notch	\$79 ea.	HP512	9" x 9" x 1.5" semi-bellows and handwarmer pocket fully lined with Arafil with one piece 1.5" x 2.75" hook and loop closure. <i>Do not use for coats shorter than 32" - use HP581 (9" x 8" x 1.5") (same price)</i>	\$190 pr.
RP553	Radio/flashlight pockets, 3" x 6.5" x 2", poly/cotton lined and 1" x 2" hook and loop closure	\$70 ea.	HP567	8.5" x 9" patch and handwarmer pocket combination with expandable 2" pleat, pocket lined 4.5" inside with self-fabric, two pieces 1.5" x 2.75" hook and loop closure on flap. <i>Do not use for coats shorter than 32" - use HP573 (8.5" x 8") (same price)</i>	\$272 pr.
FBP574	Full bellows pockets, 8" x 8" x 2" fully lined with Kevlar® twill three sides and 3" up on shell, one piece 1.5" x 8" loop on pocket and two pieces 1.5" x 2.75" hook on flap, boxed flap (can be paired with BDP546)	\$248 pr.	SBP518	Semi-bellows pockets, 8" x 8" x 2" fully lined all four sides with Kevlar twill, one piece 1" x 2" hook and loop closure	\$190 pr.
FBP579	Full bellows pockets, 10" x 10" x 2" fully lined with Kevlar twill on three sides, one piece 1.5" x 10" loop on pocket and two pieces 1.5" x 2.75" hook on flap (can be paired with BDP755)	\$262 pr.	BDP546	Split bellows pockets, 8" x 8" x 2" fully lined with Kevlar twill on three sides and 3" up on shell with 1.5" x 8" loop on pocket and two pieces 1.5" x 2.75" hook on flap, boxed flap (can be paired with FBP574)	\$254 pr.
FMP529	7.5" x 10" x 5" facemask pocket with thermoplastic zipper	\$133 ea.	BDP755	Split bellows pockets, 10" x 10" x 2" fully lined with Kevlar twill on three sides with 1.5" x 10" loop on pocket and two pieces 1.5" x 2.75" hook on flap (can be paired with FBP579)	\$272 pr.
			PPP000	6.5" x 8" pants patch pocket with snap closure	\$88 pr.

**COAT OPTIONS (all construction materials are 8.5 oz. Para-aramid aluminized knit unless noted otherwise)**

Item #	Description	Price	Item #	Description	Price	Item #	Description	Price
CC701	Leather coat cuff reinforcements (Grey)	N/C	SF202	5" storm flap, hook and D-ring coat closure, with hook and loop storm flap closure on right side "Chicago" style (requires SAC702)	\$73	MF003	Utility snap (reverse snap riveted to shell)	\$11
BE701	Self-fabric bellows elbow reinforcements with Lite-N-Dri™ cushioning	\$50	CRTT219	4" x 11" contoured throat tab, RT7100® moisture barrier lining, hook and loop closure, with storage tab	Std.	MT503	Mic tab 1" x 3", self-fabric, bartack each end	\$11
SC711	Self-fabric shoulder caps with Lite-N-Dri cushioning	\$50	FLS558	Flashlight or glove strap, 2" x 10" self-fabric strap with 2" x 3" hook and loop closure, X-stitched to shell	\$31	CLW101	4" wristlets - Kevlar/Spandex® construction	N/C
			PD006	PASS device holder 2" x 5", self-fabric with leather inside	\$32	CLW752	4" IsoDri® wristlets - Kevlar/Nomex®/Spandex construction	N/C

**PANTS OPTIONS (all construction materials are 8.5 oz. Para-aramid aluminized knit unless noted otherwise)**

Item #	Description	Price	Item #	Description	Price	Item #	Description	Price
PC000	Leather pants cuff reinforcements (Grey)	N/C	FLY201	Hook and D-ring pants closure with hook and loop storm fly closure (requires TUP512)	N/C	TUP506	Side, .5" self-fabric take-up straps (two) with 5/8" postman slides	\$37
KP642	Self-fabric knee reinforcements with additional layer of Lite-N-Dri cushioning on shell	Std.	TUP512	Self-fabric fly take-up with snap hook and D-ring riveted to shell	\$37	PM0542	Boot-cut pants leg	\$32
KP651	Removable self-fabric knee reinforcements, Lite-N-Dri cushioning	\$203	PL0202	1" elastic sewn to thermal liner leg bottom	\$37			
FLY204	Diagonal (wide angle) fly with hook and D-ring and hook and loop closure. (This closure requires a front take-up strap TUP512.) Suspender options on page 42.	\$37	BHS009	Integrated lumbar support (only available on Super Pants™) <b>Note:</b> No rear pockets or wide angle flies allowed.	\$118			

# Accessories



EZ H-Back  
(Black with Navy Padding)



Night Hawk Four-Way,  
Non-Stretch (Red with Silver Trim)



EZ H-Back  
(Red with Navy Padding)



Night Hawk Four-Way, Quick Adjust (Black  
with Yellow Trim and Navy Padding)



Four-Way Non-Stretch (Red)



Four-Way Stretch (Red)



V-Back™ Quick Adjust  
for V-Force® Belted  
Turnout Pants and  
Any Non-High-Back  
Turnout Pants



V-Back Quick Adjust for use  
with V-Force High-Back  
Turnout Pants

## Firefighter SUSPENDERS — See chart on next page

### For Use with Traditional and Super Turnout Pants

#### EZ H-Back Quick Adjust, Non-Stretch Suspenders, Black

Item #	Description	Price
SB334	34" (Extra Short) length with wire clips	\$80
SB336	36" (Short) length with wire clips	\$80
SB342	42" (Regular) length with wire clips	\$80
SB348	48" (Long) length with wire clips	\$80
SB354	54" (Extra Long) length with wire clips	\$80

#### EZ H-Back Quick Adjust, Non-Stretch Suspenders, Black Suspenders with 3M™ Scotchlite™ Reflective Material (Yellow)

Item #	Description	Price
SB336T	36" (Short) length with rectangular metal loops and trim. Requires PM0210 snap tabs on pants.	\$103
SB342T	42" (Regular) length with rectangular metal loops and trim. Requires PM0210 snap tabs on pants.	\$103
SB348T	48" (Long) length with rectangular metal loops and trim. Requires PM0210 snap tabs on pants.	\$103
SB354T	54" (Extra Long) length with rectangular metal loops and trim. Requires PM0210 snap tabs on pants.	\$103

#### EZ H-Back Quick Adjust, Stretch Suspenders, Red

Item #	Description	Price
SR338L	38" (Short) length with leather tabs	\$86
SR344L	44" (Regular) length with leather tabs	\$86
SR350L	50" (Long) length with leather tabs	\$86

#### Four-Way, Non-Stretch Suspenders, Red

Item #	Description	Price
SR242	42" (Regular) length with wire clips	\$72
SR248	48" (Long) length with wire clips	\$72

### S-T-R-E-T-C-H, Red, Four-Way Suspenders

Item #	Description	Price
SR143L	43" (Regular) length with leather tabs	\$48
SR150L	50" (Long) length with leather tabs	\$48

#### Night Hawk Four-Way, Quick Adjust, Non-stretch, Black Suspenders with 3M Scotchlite Reflective Material (Yellow)

Item #	Description	Price
SB736T	36" (Short) length with wire clips	\$108
SB742T	42" (Regular) length with wire clips	\$108
SB748T	48" (Long) length with wire clips	\$108
SB751T	51" (Long +) length with wire clips	\$108
SB754T	54" (Extra Long) length with wire clips	\$108

#### Night Hawk Four-Way, Non-Stretch Suspenders, Red with 3M Scotchlite Reflective Material (Silver)

Item #	Description	Price
SR242T	42" (Regular) length with wire clips	\$72
SR248T	48" (Long) length with wire clips	\$72

### For Use with Liberty™ or Deluxe High-Back™ Turnout Pants

#### EZ H-Back Quick Adjust, Non-Stretch Suspenders, Black

Item #	Description	Price
SB636	36" (Short) length with wire clips	\$80
SB640	40" (Regular) length with wire clips	\$80
SB645	45" (Long) length with wire clips	\$80

## V-FORCE OR NON-HIGH-BACK TURNOUT PANTS Firefighter SUSPENDERS — See chart on next page

### For Use with V-Force Belted Turnout Pants or Any Non-High-Back Turnout Pants

#### V-Back Quick Adjust, Stretch Padded Suspenders, Red

Item #	Description	Price
SR836M	36" (Short) length with wire clips in front and back, red with padding	\$165
SR842M	42" (Regular) length with wire clips in front and back, red with padding	\$165
SR848M	48" (Long) length with wire clips in front and back, red with padding	\$165
SR836X	36" (Short) length with rectangular metal loops in front and back, red with padding. Requires PM0210 snap tabs on pants.	\$161
SR842X	42" (Regular) length with rectangular metal loops in front and back, red with padding. Requires PM0210 snap tabs on pants.	\$161
SR848X	48" (Long) length with rectangular metal loops in front and back, red with padding. Requires PM0210 snap tabs on pants.	\$161
SR854X	54" (Extra Long) length with rectangular metal loops in front and back, red with padding. Requires PM0210 snap tabs on pants.	\$161

### For Use with V-Force High-Back Turnout Pants

#### V-Back Quick Adjust, Stretch Padded Suspenders, Red

Item #	Description	Price
SR836	36" (Short) length with rectangular metal loops and rear hook and loop fastener panel, red with padding	\$159
SR840	40" (Regular) length with rectangular metal loops and rear hook and loop fastener panel, red with padding	\$159
SR845	45" (Long) length with rectangular metal loops and rear hook and loop fastener panel, red with padding	\$159
SR851	51" (Extra Long) length with rectangular metal loops and rear hook and loop fastener panel, red with padding	\$159

**Note:** Order lot numbers with "Style 01" to ship one-for-one with pants. Order "Style 11" from our stock program for replacement/inventory quantities.

*PM0210	4" self-fabric snap tabs on waist, two on the front and two on the back for suspender attachment	\$40
---------	--	------

**3M Scotchlite™**  
Reflective Material

# Accessories

## Firefighter SUSPENDERS (Continued)

Model	Length	Color	Stretch	Non-Stretch	H-Back	V-Back	Trim	Metal Hook Fasteners	Leather Fasteners	Snap Tabs	Traditional/ Low Rise Super/ V-Force Pants	High-Back Pants
SB334	34 (XS)	Black		■	■			■			■	
SB336	36 (S)	Black		■	■			■			■	
SB342	42 (R)	Black		■	■			■			■	
SB348	48 (L)	Black		■	■			■			■	
SB354	54 (XL)	Black		■	■			■			■	
SR338L	38 (S)	Red	■		■				■		■	
SR344L	44 (R)	Red	■		■				■		■	
SR350L	50 (L)	Red	■		■				■		■	
SR242	42 (R)	Red		■				■			■	
SR248	48 (L)	Red		■				■			■	
SR143L	43 (R)	Red	■						■		■	
SR150L	50 (L)	Red	■						■		■	
SB736T	36 (S)	Black		■			■	■			■	
SB742T	42 (R)	Black		■			■	■			■	
SB748T	48 (L)	Black		■			■	■			■	
SB751T	51 (L+)	Black		■			■	■			■	
SB754T	54 (XL)	Black		■			■	■			■	
SB336T	36 (S)	Black		■	■		■			■	■	
SB342T	42 (R)	Black		■	■		■			■	■	
SB348T	48 (L)	Black		■	■		■			■	■	
SB354T	54 (XL)	Black		■	■		■			■	■	
SR242T	42 (R)	Red		■			■	■			■	
SR248T	48 (L)	Red		■			■	■			■	
SB636	36 (S)	Black		■				■				■
SB640	40 (R)	Black		■				■				■
SB645	45 (L)	Black		■				■				■
SR836	36 (S)	Red	■			■		■				■
SR840	40 (R)	Red	■			■		■				■
SR845	45 (L)	Red	■			■		■				■
SR851	51 (XL)	Red	■			■		■				■
SR836M	36 (S)	Red	■			■		■			■	
SR842M	42 (R)	Red	■			■		■			■	
SR848M	48 (L)	Red	■			■		■			■	
SR836X	36 (S)	Red	■			■				■	■	
SR842X	42 (R)	Red	■			■				■	■	
SR848X	48 (L)	Red	■			■				■	■	
SR854X	54 (XL)	Red	■			■				■	■	

LION always recommends using a sizing set of the same model that is being purchased. Ask the person to dress as if he or she were fighting a fire. This includes winter clothing, belts, items in his or her pockets and boots. When using a sizing set, also make sure to use suspenders with proper fit.

## Coat Measurements

### Chest size (available only in even sizes) — 1

- Have the wearer take a deep breath and fill the lungs before measuring.
- Measure over clothing around the fullest part of the chest with the arms at rest.
- Round up to closest even size.

### Sleeve length (graded to chest size) — 2

- Our standard sleeve lengths fit the majority of body types according to their chest sizes.
- Otherwise, have the wearer hold arm straight down at side.
- Measure from the base of the back of the neck, over the shoulder and down the arm to the top knuckle of the little finger where it joins the hand.

### Coat length

The coat length must provide the proper overlap of 2" per NFPA 1500. In our experience, the following rules should be followed for the coat length.

- Ask the person his or her height. If in question, measure.
- 5'6" or below can use a 29" coat.
- 5'7" – 6' must use a 32" coat.
- 6'1" and above must use at least a 35" coat.
- Always check coat and pants overlap per the NFPA requirement, as described on page 45.

## Pants Measurements

### Waist (available only in even sizes) — 3

- Waist is measured at the belt line of the stationwear pants over clothing, including a belt or anything else that may be in the pockets.
- Round up to closest even size.

### Inseam (see chart) — 4

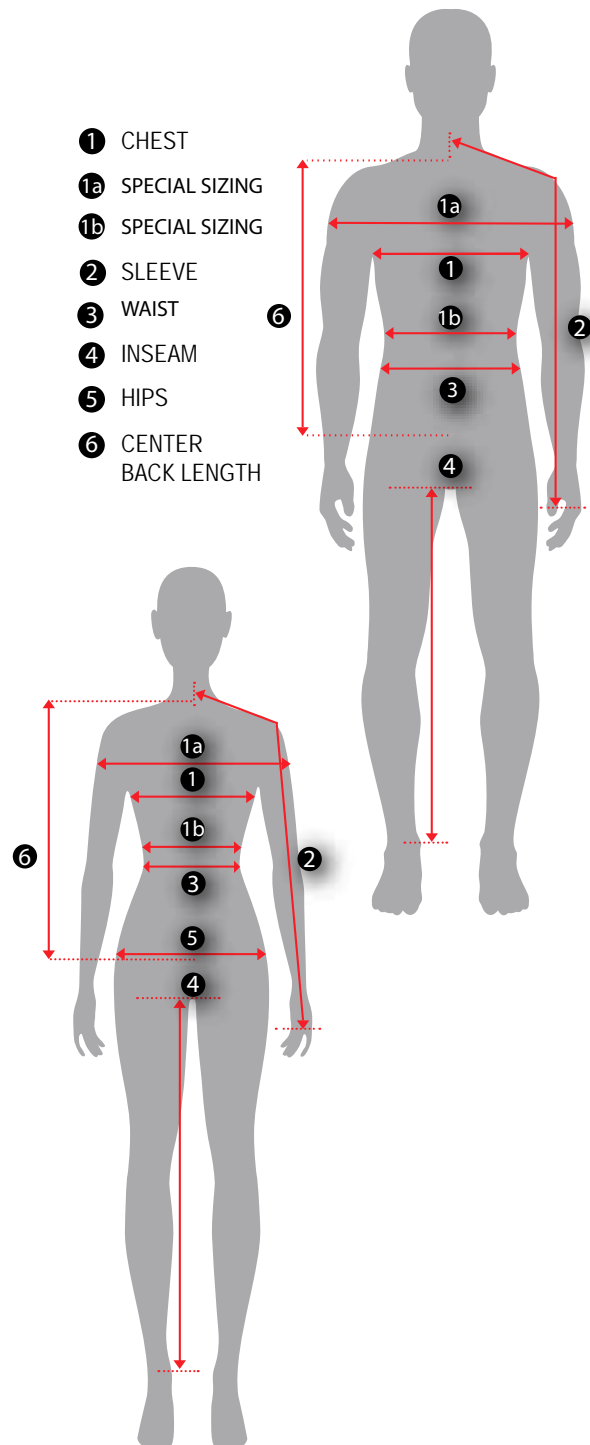
- Measure from the crotch down the inside of the leg to the floor if barefoot. Measure to the top of the sole if wearing a boot.
- Round to the nearest standard inseam length.

## Women's Sizing

- Please alert us to any women's sizing so a female pattern can be used.
- Specify coat, sleeve and inseam lengths for women.
- Include a hip measurement (5) to ensure proper fit. Measure around the fullest part of the hip area (usually 7" to 8" below the waist).

## Special Sizing

- If shoulder measurement is needed, measure over clothing around the fullest part of the shoulders with the arms at rest. If you subtract 8" from this measurement and it is more than what was measured for the chest, you may need to go up a chest size or request assistance for special sizing (1a).
- If stomach measurement is needed, measure over clothing around the fullest part of the stomach (1b).
- If thigh measurement is needed, measure fullest circumference of thigh.



## Checking Your Clothing for Ensemble Compatibility and Proper Fit

### COATS — SIZING CHART MEN'S

Chest Size	34"	36"	38"	40"	42"	44"	46" and above
Sleeve Length — XS	28"	29"	30"	30"	31"	31"	32"
Sleeve Length — S	30"	31"	32"	32"	33"	33"	34"
Sleeve Length — R	32"	33"	34"	34"	35"	35"	36"
Sleeve Length — L	34"	35"	36"	36"	37"	37"	38"
Sleeve Length — XL	36"	37"	38"	38"	39"	39"	40"
Sleeve Length — XXL	38"	39"	40"	40"	41"	41"	42"

### COATS — SIZING CHART WOMEN'S

Chest Size	34"	36"	38"	40"	42"	44"	46"	48"	50" and above
Sleeve Length — XS	28"	28"	29"	29"	29"	30"	30"	30"	31"
Sleeve Length — S	30"	30"	31"	31"	31"	32"	32"	32"	33"
Sleeve Length — R	32"	32"	33"	33"	33"	34"	34"	34"	35"
Sleeve Length — L	34"	34"	35"	35"	35"	36"	36"	36"	37"
Sleeve Length — XL	36"	36"	37"	37"	37"	38"	38"	38"	39"
Sleeve Length — XXL	38"	38"	39"	39"	39"	40"	40"	40"	41"

### PANTS — SIZING CHART MEN'S AND WOMEN'S PANTS WAIST

Men's Pants Waist	26"	28"	30"	32"	34"	36"	38"	40"	42"	44"	46"	48"	50"	52"	54"	56"
Men's Pants Inseams	23" (XXS)	25" (XS)	27" (S)	29" (R)	31" (L)	33" (XL)	35" (XXL)									
Women's Pants Waist	20"	22"	24"	26"	28"	30"	32"	34"	36"	38"	40"	42"	44"	46"		
Women's Pants Inseams	21" (XXS)	23" (XS)	25" (S)	27" (R)	29" (L)	31" (XL)	33" (XXL)									

### WARNING

There are several different styles of protective coats and pants available from various manufacturers. You must make sure that you are wearing coats and pants that are compatible and have adequate overlap to assure adequate protection. Always follow the manufacturer's recommendations on compatible coat and pant models. Failure to match the proper styles of coat and pants could result in severe burns, cuts or abrasions to the lower back and torso area.

#### A Firefighter's Height Affects Overlap

In order to ensure proper overlap, firefighters who are taller than 5' 8" **MUST ALWAYS** wear a coat that measures 32" or greater from the collar seam to the back hem. Wearing a coat without adequate overlap could result in serious injury. Special care should be given to long-bodied firefighters of any size to ensure that overlap requirements are met.

#### Overlap

You must make sure that there is adequate overlap between the coat and the pants, including the outer shell, the thermal barrier and the moisture barrier before using the garment. You will need the assistance of a fellow firefighter to check these key areas.

To check overlap, the following tests should be performed while wearing your gear

#### WITHOUT AN SCBA DEVICE:

- NFPA 1500 Standard Position A (Fig. 4A). While standing, reach over head as high as possible with your hands together. There should be no less than two inches of overlap from the lower edge of the inner liner of the coat to the top of the pants.
- NFPA 1500 Position B (Fig. 4B): While standing with your hands together and reaching overhead as far as possible, bend forward, then to the left, then to the right and then backwards as much as possible. There should be no less than two inches of overlap from the lower edge of the inner liner of the coat to the top of the pants in any of these positions.
- Make sure the lower edge of your pants overlaps the top of your boots by four to six inches. Make sure your gloves and wristlets overlap each other by several inches, leaving no gaps where wrists might be exposed.

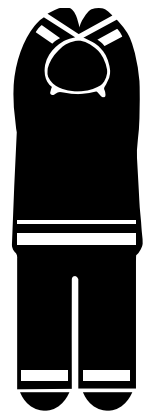


Fig. 4A  
NFPA Position A

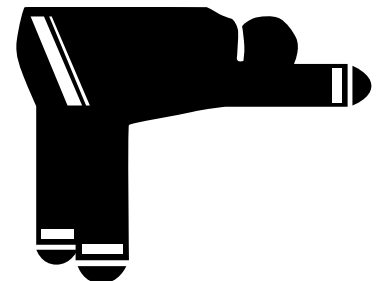


Fig. 4B  
NFPA Position B

## General Instructions:

1. Use a calibrated tape measure.
2. Refer to most recent measurement specifications. These measurements apply to new garments before wash. Any washed garments are subject to up to 5% shrinkage in any directions, as allowable by NFPA Standard 1971.
3. Remove liner from shell.
4. Measure shell and liner separately.
5. Completely close the closure system.
6. Lay garment on flat surface.
7. Straighten garment to lay flat (fully extended).

## Coat Measurements:

Take these measurements from the front side of the coat.

### Chest

- a. Measure at underarm bellows seam.
- b. Multiply measurement by 2. This will equal the total chest circumference measurement.

### Cuff

- a. Measure straight across end of sleeve.
- b. Multiply measurement by 2. This will equal the total cuff measurement.

Take these measurements from the back side of the coat.

### Sleeve

- a. Measure at center back at collar seam, across top shoulder, down outside sleeve, to cuff.
- b. For liner, measure to wristlet seam.

### Coat Length

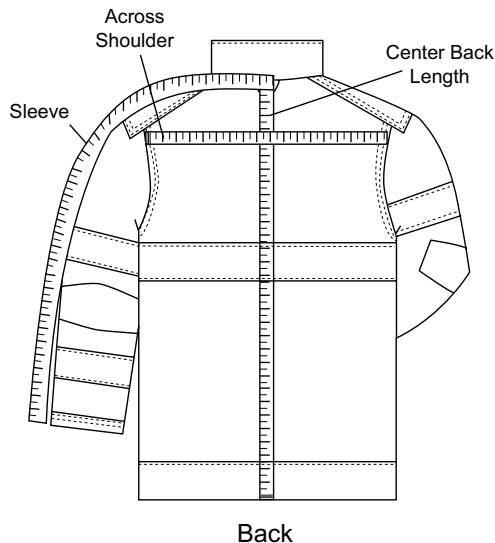
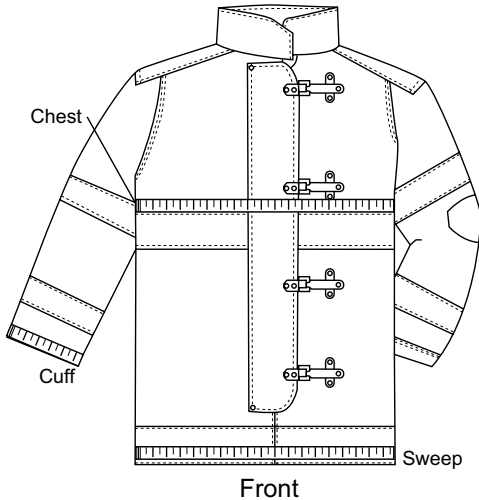
- a. Measure at center back at collar seam to bottom edge of coat.

### Shoulder

- a. Measure 2" below neck, horizontally across shoulder below shoulder reinforcement.

### Sweep

- a. Open coat shell and/or liner and lay flat. Measure at inside bottom hem of coat shell or liner from one edge to the other along the bottom edge.



## \*Note:

Sleeve on V-Force®:

- a. Measure at the center back at collar seam, across top shoulder, down outside sleeve to end of extended cuff. Then deduct 1.5" to get the exact sleeve length.
- b. For liner, measure to wristlet seam.



**Pants Measurements:**

Take these measurements from the front side of the pants.

**Waist**

- a. Measure straight across at waist of pants at top of fly.
- b. Multiply measurement by 2. This will equal the total waist circumference measurement.

**Thigh**

- a. Measure at part of the leg highest and closest to crotch.
- b. Multiply measurement by 2. This will equal the total thigh measurement.

**Knee**

- a. Measure straight across at center of knee.
- b. Multiply measurement by 2. This will equal the total knee measurement.

**Seat**

- a. Measure at widest part below fly.

Take these measurements from the back side of the pants.

**Rise**

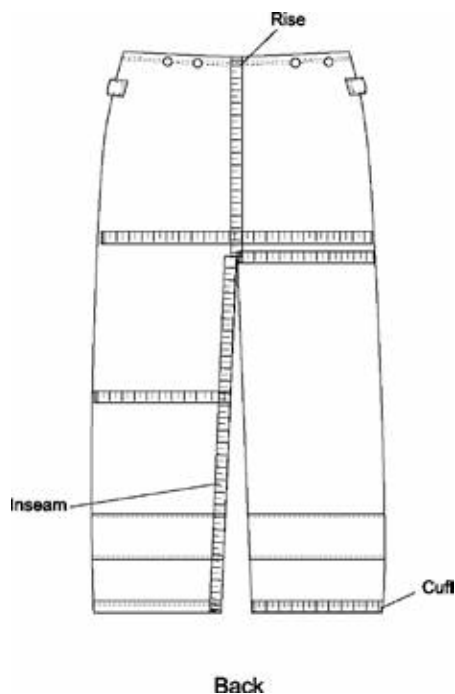
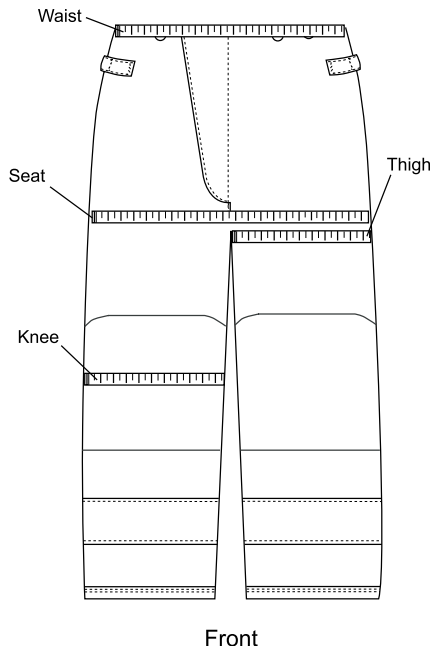
- a. Measure at center of waist to center of crotch.
  - For Traditional Pants, measure to center crotch seam.
  - For pants with a banded crotch, measure to center of banded crotch piece.

**Inseam**

- a. Separate pants legs. Measure from center of crotch to bottom of pants cuff.
- b. For pants with a banded crotch, measure from the center of the banded crotch piece to the bottom of pants cuff.

**Cuff**

- a. Measure straight across at leg bottom.
- b. Multiply measurement by 2. This will equal the total cuff measurement.



## RETAIL PRICE LIST

Effective February 1, 2023  
Price subject to change without prior notice



# 2023 LION Customer Policies — Terms/Warranty

## 2023 LION CUSTOMER POLICIES — TERMS AND CONDITIONS OF DOMESTIC SALE, 48 CONTIGUOUS STATES

These are the General Terms and Conditions of Sale and Delivery ("General Terms") of Lion First Responder PPE, Inc., with its place of business at 7200 Poe Avenue, Suite #400, Dayton, OH 45414, including companies or enterprises affiliated therewith (hereinafter jointly referred to as "Seller").

### 1. APPLICABILITY

- a. These General Terms and Conditions of Delivery and Services apply to all offers, services, deliveries and agreements contracted as such with Seller.
- b. These General Terms may only be departed from if Seller expressly states or acknowledges this in writing.
- c. Other general terms and conditions, including but not limited to the terms and conditions of any counterparty (including but not limited to buyers or commissioning parties, that Seller has concluded an agreement with or is in negotiation of concluding any agreement) (all hereinafter to be referred to as "Buyer"), shall, where not in accordance with these General Terms, be explicitly rejected. Such other general terms and conditions shall only apply if and insofar as explicitly confirmed by Seller in a separate document.
- d. These General Terms also apply, as circumstances so dictate, for the benefit of personnel and assistants of Seller and/or auxiliaries engaged by Seller who are working and/or useful for the performance of the relevant agreement, as well as for the benefit of third parties through whom Seller has the contracted agreement performed, whether in whole or in part.

### 2. OFFERS, CONTRACTS & CHANGES

- a. Unless the offer stipulates a period for acceptance, all offers are non-binding. In all offers, prices stated do not include any state, local or federal governmental taxes, duties and/or customs charges unless specifically stated. Up to one (1) week after acceptance of a non-binding offer, Seller may withdraw the offer. A non-binding offer remains valid for a maximum period of thirty (30) days, unless explicitly stated otherwise in the offer.
- b. The agreement is contracted as soon as a full and unconditional acceptance of the offer has reached Seller. This acceptance implies that the Buyer consents to the applicability of these General Terms and, insofar as necessary, waives the declaration of applicability of the Buyer's own general terms and conditions of purchase (or of whatever kind).
- c. If the acceptance contains reservations or changes to the offer, contrary to the provisions of the preceding paragraphs, the agreement is only contracted if and insofar as Seller has explicitly informed the Buyer in writing that it consents to such departures from the offer. In such event, only the reservations or changes stipulated by the Buyer that Seller has expressly confirmed will be applicable, meaning that all other reservations or changes that are not expressly confirmed to be accepted are deemed to have been rejected. It is understood that the applicability of these General Terms (including all provisions hereto), is a key stipulation of Seller, and forms an integral part of its offer. Seller reserves the right to change prices in response to requests made by Buyer to change product features, designs or materials either before or after acceptance.
- d. Offers issued and contracts entered into by representatives, sales agents or intermediaries are binding on Seller only after the order has been confirmed in writing.
- e. Seller is only bound by offers and contracts produced and/or concluded by representatives, commercial agents or intermediaries after a written order confirmation by Seller.
- f. Information and data provided by the Buyer to Seller for the purposes of the agreement contracted, such as drawings, etc., will be assumed by Seller to be correct, and Seller will base its offer on such information. Seller is not responsible, and bears no responsibility, for specifications or designs developed and supplied by Buyer and/or information, drawings, etc. supplied by the Buyer as referred to in the preceding sentence, regardless of whether Seller has advised the Buyer thereon. This applies accordingly to parts and materials that the Buyer makes available or prescribes to Seller.
- g. In reading the measures, weights, colors and technical data contained in the offers, the other party should allow for minor discrepancies which do not exceed the normal limits. Sizes, weights, colors and technical details in the offer should be read in such a way that the other party must take account of small deviations that do not go beyond the boundaries of what is considered normal.
- h. Prices in offers and contracts are based on the relevant circumstances and data (particularly the salary and materials costs) which were in force or known to Seller at the time of preparing the offer or concluding the contract.
- i. All orders are subject to credit department approval.
- j. Delivery, minimums and surcharges of the goods and services may vary according to the product line; all such variations will be stated in proposals, quotes or bid documents.
- k. Possession of a price list of Seller does not constitute an offer to sell.
- l. For all turnouts, a One Hundred and Twenty-Five U.S. Dollar (\$125) (list) minimum order surcharge may apply to special cuts or special production runs and to custom sizes or over-sizes outside Seller's standard sizing (see appropriate sizing charts). On non-turnout products, a ten percent (10%) minimum surcharge may apply to special cuts or special production runs and to custom sizes or over-sizes outside Seller's standard sizing (see appropriate sizing charts).
- m. Seller is entitled to adjust offered or agreed prices according to reasonableness and fairness; if there is a material change in circumstances or data, including but not limited to, increases in labor, transportation or material costs, after the issuing of the offer or the conclusion of the contract, but before the performance of the contract. An example of the foregoing change in circumstances is supply chain or labor cost increases caused by the Covid-19 pandemic.

### 3. DELIVERY & RISK OF LOSS

- a. For PPE and core training products, freight term for domestic orders delivered within the 48 contiguous U.S. states is F.O.B. Destination unless otherwise stated on quote.
- b. Contact Seller for terms and conditions of sale for International, Alaskan/Hawaiian or other non-continental U.S. destinations, Totalcare offers, and for sale of large props and Custom Build training projects.
- c. No C.O.D. orders.
- d. Unless expressly agreed otherwise, stated delivery times shall not be regarded as deadlines, unless explicitly agreed otherwise. In the event of late delivery, the Buyer must give Seller due notice before Seller can be in default.
- e. Seller reserves the right to ship partial orders unless complete shipment is stated on the order.
- f. Rush orders for custom make-to-order products are subject to a twenty percent (20%) rush fee.
- g. The delivery period commences on the date on which Seller has confirmed the order to the Buyer, or otherwise on the date agreed by the parties in writing.
- h. Seller is authorized to determine the method of transport. For Large Props and Custom Build Projects, transport costs are not included in the offers and sale prices, but will be charged separately to the Buyer as appropriate.
- i. The goods shall be delivered by Seller in the packaging it deems appropriate. If the Buyer prescribes different packaging, Seller is entitled to invoice the Buyer separately for the cost of such packaging.
- j. Seller is entitled to have deliveries made or services performed by third parties.
- k. Documentation provided by third party carriers shall be conclusive evidence of proof of delivery and Seller bears no responsibility for goods after delivery by carrier to designated destination.
- l. If applicable, the Buyer should ensure that Seller is able to carry out the installation work undisturbed. Amongst other things, the Buyer should ensure free access to the installation site and the availability of all the necessary facilities.

*continued on next page*

## RETAIL PRICE LIST

Effective February 1, 2023  
Price subject to change without prior notice



# 2023 LION Customer Policies — Terms/Warranty (Continued)

### 4. PAYMENT & TRANSFER OF OWNERSHIP

- a. All orders for make-to stock products are subject to a handling charge of Four and 25/100 U.S. Dollars (\$4.25). All orders amounting to less than Fifty U.S. Dollars (\$50.00) will be subject to a handling charge of Fifteen U.S. Dollars (\$15.00).
- b. In the event of late payment by the Buyer, the Buyer will be deemed to be in breach by operation of law with no demand letter or notice of default being required. All payments must be made within thirty (30) days after the date of invoice, unless any other payment term is explicitly agreed in writing. Payment must be made without any deduction or offsetting, at the offices of Seller or by means of transfer to a bank account stipulated by Seller.
- c. Seller retains full (and sole) ownership of the goods until such time as the due purchase sum, including any statutory interest, collection cost, etc. has been paid in full and received by Seller, even if the goods have meanwhile been processed or incorporated into other products.
- d. If the Buyer does not pay within the set time described herein (the "Payment Date"), it shall be deemed to be legally in default without the requirement of any warning or notice of default.
- e. For amounts owed after the Payment Date, Buyer shall pay two percent (2%) per month interest, or the maximum statutory rate, if below 2%, as well as legal and other costs incurred in order to secure the performance of the contract, its cancellation and/or compensation, except if Seller is ruled against by a final and conclusive judgment of the court.
- f. The collection costs shall amount to at least fifteen percent (15%) of the outstanding sum, subject to a minimum of Three Hundred U.S. Dollars (\$300.00).
- g. The Buyer is at all times obliged to furnish security to Seller, immediately upon receipt for the fulfillment of its obligations. If the Buyer does not comply with this request, Seller will be entitled to cancel the contract, as well as any other still existing contracts between Seller and the Buyer, without judicial intervention, and to claim additional or compensatory damages.
- h. If Seller has claims against the Buyer and the object of these claims is under a retention of title and Seller also has claims against the Buyer for which no retention of title has been made, payment by the Buyer is applied first towards fulfillment of the claim(s) not subject to retention of title.
- i. As long as the ownership of the goods delivered has not been transferred to the Buyer: (i) the Buyer is not permitted to transfer the ownership of the goods delivered, to encumber these goods with real rights or rights under the law of obligations, or to alienate them under any title whatsoever except pursuant to the provisions of paragraph 9 of this article or otherwise agreed in writing; (ii) the Buyer is obliged to observe due care in maintaining custody of the goods and to hold them as the identifiable property of Seller (any marks or signs of Seller applied in, on or to the goods delivered must remain clearly visible; and (iii) the Buyer is obliged to store goods delivered that are defined exclusively by type and weight separately and ensure that they are clearly identifiable as property of Seller.
- j. As long as the ownership of the goods delivered has not been transferred to the Buyer, the Buyer is permitted to incorporate or process the goods delivered or sell and transfer them to third parties, so long as in the context of its normal business operations, and in the case of sale, the Buyer (i) stipulates a retention of title to the goods delivered upon its Buyer, or (ii) immediately pays the purchase price owed to Seller, or (iii) pledges to Seller the Buyer's claim against its Buyer, payable upon demand by Seller.
- k. Seller is entitled to reclaim the goods delivered under retention of title, if and insofar as the Buyer remains in default of the fulfillment of any obligation toward Seller, or in the opinion of Seller, exhibits any payment problems.
- l. The Buyer hereby grants Seller nunc pro tunc the irrevocable right to enter the Buyer's business premises or to allow a third party designated by Seller to do so in the event that Seller wishes to reclaim the delivered goods.

### 5. RETURNS

- a. The Buyer must contact Seller Buyer Support within forty-five (45) days of receipt of shipment to receive a Return Authorization Number. All returns received without a Return Authorization Number will be held up for processing. Except for defective items:
  - i. Products that have been worn, laundered, altered or soiled are non-returnable;
  - ii. Personalized garments (e.g., with names, letters or heat transfer emblems) are non-returnable;
  - iii. Custom manufactured, custom sizes, made-to-order and special cut products are non-returnable;
  - iv. Products that have been discontinued or redesigned are non-returnable;
  - v. Boots that have been worn are non-returnable;
  - vi. CBRN products are non-returnable.
- b. Returns must have prior approval from Supplier and marking instructions. Supplier will not accept goods returned without its written permission.
- c. Return of stock goods are subject to a fifteen percent (15%) restocking fee.
- d. Custom made-to-order products are not returnable.

### 6. FORCE MAJEURE

- a. If Seller is prevented by force majeure from making full, correct and proper delivery within the delivery time, Seller is entitled to cancel the contract, or to inform the Buyer of a reasonable period within which full, correct and proper delivery can still be made, without Seller being bound to pay any compensation.
- b. Force majeure is deemed to apply if after agreement is concluded, Seller is prevented from fulfilling its obligations under this agreement or making the preparations to do so as the result of an extraordinary nature in particular circumstances such as epidemic, pandemic, war, risk of war, civil war, acts of war, riot, terrorism, civil unrest, fire, water damage, inaccessibility of certain areas, flooding, strike, works occupation, lockout, hindrances to imports and exports, official regulations, defective machinery, interruptions in the power supply, all of these both in Seller's factory and in the third party establishments from which Seller wholly or partly draws the necessary plant or raw materials, as well as in storage or during transport, whether or not under Seller's own control and, further, through all other causes arising through no fault of Seller or outside its area of risk.
- c. In the event Seller fails to perform any of its obligations due to force majeure, Seller will inform the Buyer immediately of the reason and will immediately upon cessation of the force majeure take all reasonable steps within its power to resume compliance with its obligations ASAP. If the obligations cannot be met after sixty (60) days either party has the right to terminate the contract.

### 7. DISPUTES & APPLICABLE LAW

- a. All legal relationships between the parties are governed exclusively by U.S. law, to the exclusion of all other legal systems.
- b. The Vienna Sales Convention (CISG) is not applicable, nor are any other international rulings from which exclusion is permitted.
- c. All disputes will be settled exclusively by a court of competent jurisdiction in Dayton, Ohio. Nonetheless, the parties will first attempt in good faith to resolve any dispute or claim amicably through negotiations between representatives of each party with authority to settle the relevant dispute

*continued on next page*

## RETAIL PRICE LIST

Effective February 1, 2023  
Price subject to change without prior notice



# 2023 LION Customer Policies — Terms/Warranty (Continued)

### 8. COMPLAINTS & LIABILITY

- a. Without prejudice to all that is stipulated in the agreement and elsewhere in these General Terms, Seller will not be liable, contractually and/or extra-contractually, for direct damages, except insofar as the Buyer proves that the damage and/or loss is the result of a defect in the delivered product that can be solely attributed to Seller, in which case, however, the total liability of Seller will be still limited to the amount that is covered by its insurance. If no insurance coverage exists, for any reason at all, Seller's liability is limited to a sum equal to the amount of the invoice value of the supplied goods that gave rise to the liability. Seller can never be held liable for loss of profits, loss of earnings or other indirect and consequential damage. Seller will in no event be liable, unless insofar as it explicitly accepts liability in these General Terms or in a written agreement between Seller and the Buyer. Seller shall have no liability for injuries to third parties or damage caused by Buyer's use of Goods for any purpose other than their intended use.
- b. Complaints must be submitted to Seller in writing, with argumentation, within fourteen (14) days after the Buyer becomes aware or could reasonably have become aware of the complaint, failing which Seller is entitled to disregard the complaint and the Buyer is deemed to have waived any claim it may have against Seller with regard to the complaint.
- c. If a timely and well-substantiated complaint is found justified, Seller is entitled to either lower its invoices or improve the results of its work.
- d. Complaints do not entitle the Buyer to suspend or offset any payments.
- e. After delivery, Seller is no longer liable for faults, excepting where faults are fully and solely attributable to Seller and the Buyer did not give notice of such faults prior to the transfer in title, and furthermore the Buyer could not reasonably be expected to have discovered these faults at the moment of transfer in title and register a complaint concerning the fault within the appropriate time frame as stipulated herein.
- f. If and insofar as the Buyer has insured any risk associated with the agreement, the Buyer is obliged to claim any damages under that insurance and indemnify Seller against recovery claims by the insurer.
- g. Seller's liability for direct material damages is at all times limited to the net amount of the invoice pertaining to the agreement (excluding VAT). Under no circumstances shall the compensation exceed the amount for which Seller has procured insurance coverage for the loss-causing events and for which coverage is actually provided.
- h. The following are not subject to compensation: Consequential loss, including damages due to business stoppage and loss of profit; Damages inflicted on persons and/or property found in the vicinity of the location where the contract is being performed inflicted by or during the performance of the contract; Damages caused by third parties, such as auxiliaries engaged by Seller.
- i. Excepting where otherwise agreed in writing, all liability of Seller is cancelled (and therefore will expire) at the latest after six (6) months have elapsed from the moment at which the agreement ends by transfer in title, dissolution or cancellation.
- j. The legal claim derived from a fault for which Seller is liable is not admissible (and will therefore expire) if it is brought later than six (6) months following the day on which the agreement ends by virtue of delivery, transfer in title, dissolution or cancellation.

### 9. INTELLECTUAL & INDUSTRIAL PROPERTY RIGHTS

- a. All rights of intellectual property with regard to the products and/or services as well as the designs, drawings, software, documentation and all other materials developed and/or used in the preparation or performance of the agreement between Seller and the Buyer or agreements resulting therefrom are vested exclusively in Seller or its Sellers. The delivery of products and/or services does not extend to any transfer of intellectual property rights.
- b. The Buyer acquires only a license for the non-exclusive and non-transferable right to use the products and results of the services for the agreed purposes. The license is only valid if the Buyer fulfils the financial obligations connected with making available the copyright-protected design.
- c. The license applies solely to the use of the design or invention in question by the Buyer itself. Use of the license by third parties is not permitted except after written permission has been obtained by Seller.
- d. Without the prior written consent of Seller, the Buyer shall not in any way disclose, duplicate, reverse-engineer or allow third-party access to any or all of the products, services, and results thereof.
- e. The Buyer shall not remove or alter references of Seller or its Sellers concerning copyrights, trademarks, trade names or other intellectual property rights.
- f. Seller warrants that it is authorized to extend the rights of use as described above to the Buyer, and indemnifies the Buyer against any claims of third parties in this regard. This provision does not apply if and insofar as the products, services and/or their results are altered and/or if they are delivered in conjunction with goods of third parties, in this latter case excepting where the Buyer demonstrates that the claims of third parties pertain exclusively to the products, services and/or results delivered by Seller.
- g. As long as there is retention of title in place, Seller can reclaim the goods without this constituting default. The Buyer irrevocably authorizes Seller to enter the place(s) where these goods are located. Additionally, the Buyer is not authorized to alienate the goods, nor to encumber the goods with any right or restricted right.

### 10. CANCELLATION

- a. Seller is entitled to cancel the agreements with the Buyer under retention of its claims for compensation of losses in full, in the event of:
  - i. the Buyer's late payment of eligible amounts or an interruption in Buyer's payments;
  - ii. the Buyer's application for bankruptcy;
  - iii. the Buyer's application for suspension of payments;
  - iv. the Buyer's being placed under conservatorship; or
  - v. liquidation of the Buyer's business.
- b. If the Buyer cancels a contract, Seller is entitled to recover from the other party the costs which it has incurred that can no longer be recovered, as well as its lost profit.
- c. Cancellation of the agreement renders all outstanding claims between the parties immediately fully payable. The Buyer is liable for the damages suffered by Seller, including but not limited to loss of profit and transport costs.
- d. The lost profit must amount to at least twenty-five percent (25%) of the payment (excluding turnover tax) that Seller would have received from the performance of the contract.

### 11. WARRANTY

- a. For PPE and uniforms, Seller warrants that all its firefighter and emergency responder protective clothing, uniforms and equipment meet all applicable NFPA standards in effect at the time of their manufacture and further warrants that such products are free from any defect in workmanship or any patent material defect.
- b. Conditions of use are outside the control of Seller. It is the responsibility of Buyer to inspect and maintain the product to assure it remains fit for its intended purpose. In order to maximize the useful life of these products and maintain the warranty, the products are to be used only by appropriately trained personnel following proper firefighting or emergency response techniques and in accordance with the products' warning, use, inspection, maintenance, care, storage and retirement instructions. Failure to do so will void the warranty.

*continued on next page*

## RETAIL PRICE LIST

Effective February 1, 2023  
Price subject to change without prior notice



# 2023 LION Customer Policies — Terms/Warranty (Continued)

- c. If the agreement involves the processing of material supplied by the Buyer, Seller warrants the product incorporating the material to be free from only manufacturing defects for a period of six (6) months after delivery. If the processing proves to be unsound, Seller may, at its own discretion, either remedy the fault or perform the processing again using material to be delivered by the Buyer, or refund a proportionate amount of the agreed contract price.
- d. Subparagraphs e, f, g and h of this section apply exclusively to training products.
- e. Seller warrants the proper functioning of its products and the soundness of the materials and parts used therein for a period of twelve (12) months after delivery or for any other such term as agreed in writing between Seller and the Buyer. No warranty is given for products that were not new at the moment of delivery, and/or products that are not in use by the Buyer itself. Seller does not warrant that the goods are suitable for the purpose for which the Buyer intends to use them. Seller does not warrant the absence of any faults of the products if and insofar as the products were made following the design and/or other instructions or materials of the Buyer.
- f. Parts for which the wear-and-tear is dependent on the intensity and frequency of use of the product delivered are warranted for twelve (12) months or seven hundred and fifty (750) hours of use, whichever comes first. Replacement of any parts damaged as result of excessive usage and operation, defined as greater than eighty-five (85) hours per month or one thousand (1,000) hours per year, or more than ten (10) hours of continuous operation, shall be excluded from the warranty.
- g. Seller must be informed of more intensive use as soon as it becomes clear that the product is likely to be used more than indicated in General Terms or a separate agreement signed by both parties. If the Buyer remains in default of notifying Seller, the warranty is voided.
- h. Faults that arise after modification or repair by third parties, faults resulting from the use of the products for a purpose other than that for which they are intended, and faults arising from normal wear-and-tear, injudicious use or improper maintenance are not covered by the warranty. The Buyer is also barred from invoking the warranty provisions:
  - i. if software and/or systems purchased by the Buyer have been installed without the prior consent of Seller and/or not fully according to any given instructions of Seller;
  - ii. in the event of negligence on the part of the Buyer with regard to maintenance, or if the Buyer has used the goods for purposes for which they were not designed;
  - iii. if the Buyer has made changes or had changes made to the goods;
  - iv. in the event of injudicious or reckless use, improper connections, improper voltage, lightning strike, damage due to moisture penetration or other external causes or calamities; or
  - v. for software problems resulting from the installation of software installed by the Buyer or third parties without the explicit permission of Seller.
- i. EXCEPT AS SET FORTH ABOVE, SELLER MAKES NO OTHER WARRANTIES, EXPRESSED OR IMPLIED, INCLUDING BUT NOT LIMITED TO, ANY WARRANTIES OF MERCHANTABILITY OR FITNESS FOR ANY PARTICULAR USE.
- j. Under the above warranties, Seller will repair or replace, at its option, any product which does not meet the above warranties. Such repair or replacement will be the Buyer's sole remedy and Seller will not be responsible for any incidental, consequential or other damages based upon or arising in any way from breach of the warranties contained herein or the Buyer's misuse of such product.
- k. The repairs under warranty will normally be carried out by Seller at its factory, affiliate, or other designated facility. Only if repair by Seller or a third party engaged by Seller is not possible, and Seller has duly communicated this to the Buyer, the Buyer shall be entitled to the replacement or repair of the faulty parts (unless otherwise explicitly agreed).
- l. Seller may decide not to repair the goods but instead to replace them with brand new or equivalent goods, or to take back the goods and, if appropriate, refund part of the purchase price and/or offer a comparable alternative.
- m. The goods replaced under this warranty will be the property of Seller.
- n. These warranty obligations apply only to any product, part or component which is returned to Seller or a Seller Authorized Clean and Repair Center with prior authorization and proof of purchase, and which Seller agrees to be defective as covered by this warranty.
- o. The word "product" includes the product itself and any parts or labor furnished by Seller with the sales, delivery or servicing of the product.
- p. "Defects in workmanship and materials" means poorly manufactured seams, stitching or components (e.g., loose or broken seams, zippers or snaps that fall off or do not function properly), and fabrics which have such flaws as holes, uneven spots, weak areas, pilling or other flaws caused by irregularities in their manufacture.
- q. The limited warranty for firefighter PPE does not cover the following items after receipt of the product by Buyer:
  - i. Claims made after sixty (60) days from the date of shipment for damage to materials;
  - ii. Damage or color change from exposure of materials to direct or indirect sunlight or fluorescent light;
  - iii. Shade variations among textiles used or shade changes to fabrics caused by wear and tear and/or washing;
  - iv. Color loss due to abrasion (creases, folds, pleats, edges, collar points, etc.);
  - v. Damage caused by improper washing, decontamination, disinfecting or maintenance (for example, use of chlorine or petrochemicals to clean);
  - vi. Damage caused by repair work not performed to factory specifications;
  - vii. Damage from routine exposure to common hazards which may cause rips, tears, burn damage or abrasion;
  - viii. Loss of retroreflectivity of reflective trim due to normal wear and tear and/or heat exposure;
  - ix. Detachment of reflective trim due to thread abrasion and/or heat exposure;
  - x. Replacement of zippers or closures worn partially sealed and/or damaged by heavy wear and tear;
  - xi. Loss of buttons, snaps, or cuff seams.
- r. For training products, telephone support is offered within the warranty period to assist with trouble-shooting faults and to assist the Buyer in replacing parts covered under warranty. At the conclusion of the warranty period, telephone support will be offered as part of a separate Maintenance Contract offered by the Seller. The Buyer understands that telephone support and assistance can only be guaranteed during normal office hours and on normal workdays.



7200 POE AVENUE, SUITE 400  
DAYTON, OHIO 45414 | 800.421.2926  
[www.lionprotects.com](http://www.lionprotects.com)

Aero Super-Deluxe, AraFlo, Deluxe High-Back, Ever-Dry Reach System, Freedom Design, IsoDri Moisture Management System, Liberty, LION Integrated Rescue Harness, Lite-N-Dri, RedZone, SemperDri, Super-Deluxe, Super Pants, V-Back, V-Fit, V-Force, Viz-a-V, Ventilated Trim and Wrist Shield System are tradenames of Lion Group, Inc.

3M and Scotchlite are trademarks of 3M company. PBI is a registered trademark of PBI Performance Products, Inc. DuPont, E-88, Kevlar, Nomex, Teflon and Spandex are tradenames of E.I. du Pont de Nemours and Company. Armor, Armor AP, Glide ICE, PBI Max, PBI Max LP and Prism are trademarks of Safety Components Fabric Technology. CROSSTECH, Parallon and RT7100 are registered trademarks of W.L. Gore and Associates, Inc. Advance, Pioneer and Super Shellite are tradenames of TenCate Protective Fabrics USA Inc. SuperFabric is a registered trademark of Higher Dimension Materials, Inc. Oralite is a registered trademark of ORAFOL. Stedair is a registered trademark of Stedfast Inc.

#### GET SOCIAL WITH US:



**FACEBOOK** [facebook.com/lionconnects](https://facebook.com/lionconnects)  
**INSTAGRAM** [instagram.com/lion\\_firegear](https://instagram.com/lion_firegear)  
**TWITTER** [twitter.com/lion\\_gear](https://twitter.com/lion_gear)  
**PINTEREST** [pinterest.com/lionfiregear](https://pinterest.com/lionfiregear)  
**YOUTUBE** [youtube.com/lionconnects](https://youtube.com/lionconnects)



LION  
CERTIFIED TO ISO 9001: 2015  
10001779 QM15