



MISSISSIPPI DEPARTMENT of WILDLIFE, FISHERIES, AND PARKS

Lynn Posey, Executive Director

1505 Eastover Drive

Jackson, Mississippi 39211

(601) 432-2400

MINORITY AND WOMEN OWNED BUSINESSES ARE ENCOURAGED TO APPLY

SOLICITATION: Request for Quote Formal (RFQF)
Reverse Auction

SOLICITATION: RFX #3140003310

DESCRIPTION: Two (2) Dozers and One (1) Excavator

ISSUE DATE: November 10, 2022

RFQF CLOSING LOCATION: Mississippi Department of Wildlife, Fisheries, and Parks
1505 Eastover Drive
Jackson, Mississippi 39211

RFQF COORDINATOR: Leigh Washington
Telephone: 601.432.2008
Email: Procurement@wfp.ms.gov

CLOSING DATE AND TIME: November 30, 2022, 2:00 PM CT

SECTION I
GENERAL CONDITIONS – REVERSE AUCTIONS

ALL BIDS SUBMITTED SHALL BE IN COMPLIANCE WITH ALL CONDITIONS SET FORTH HEREIN. THE BID PROCEDURES FOLLOWED BY THIS OFFICE WILL BE IN ACCORDANCE WITH THESE CONDITIONS. THEREFORE, ALL BIDDERS ARE URGED TO READ AND UNDERSTAND THESE CONDITIONS PRIOR TO SUBMITTING A BID.

1. Definitions

The use of the word “agency” in any Bid Invitation solicitation or specification shall be intended to mean state agencies only. The words “governing authority” when used shall be intended as meaning city, county or other local entities.

2. Preparation of Bids

- 2.1 Bids and/or Quotes may be submitted through the State of Mississippi’s e-procurement system (MAGIC), via email, or in person to the Mississippi Department of Wildlife, Fisheries, and Parks, Purchasing Department (“MDWFP”). Paper bids are allowed. All prices and notations must be printed in ink or typewritten. No erasures permitted. Errors may be crossed out and corrections printed in ink or typewritten adjacent and must be initialed, in ink, by the person signing bid.
- 2.2 To submit bids electronically, bidders must ensure they are registered in the MAGIC system and have received a login, password, and supplier number and that all technical requirements have been met.
- 2.3 If a bidder is unwilling or unable to participate through MAGIC, an MDWFP representative can enter the Vendor’s bid(s) manually (i.e. Surrogate bidding).
- 2.4 Bidders participating in person by surrogate bidding must so indicate in their response to the initial Request for Quote-Formal (RFQF).
- 2.5 Failure to examine any drawings, specifications, and instructions will be at bidder’s risk.
- 2.6 Price each item separately. Unit prices shall be shown. Bid prices must be net.
- 2.7 It is understood that reference to available specifications shall be sufficient to make the terms of such specifications binding on the bidder.
- 2.8 Bidders must furnish all information requested in the bid specifications. Further, when required, each bidder must submit for bid evaluation cuts, sketches, descriptive literature and technical specifications covering the product offered. Reference to literature submitted with a previous bid or on file with MDWFP will not satisfy this provision.
- 2.9 Samples of items, when requested, must be furnished free of expense, and if not destroyed in testing will, upon request, be returned at the bidder’s expense. Request for the return of samples must be made within ten (10) days following opening bids. Each individual sample must be labeled with bidder’s name, manufacturer’s brand name and number, State of Mississippi commodity number, bid number and item reference.

2.10 Time of performance. The number of calendar days in which delivery will be made after receipt of order shall be indicated in the bid specifications.

3. Bid Submission

- 3.1 When submitting a bid electronically, the authorized signature may be typed or be an electronic signature.
- 3.2 Bids and modifications or corrections received after the closing time specified will not be considered.
- 3.3 When submitting the response to the RFQF in MAGIC, bidder must ensure all questions have been answered within the RFQF and all proposed items in the bid have a response.
- 3.4 Bidders submitting paper responses should submit responses to the MDWFP by the response deadline. The bid package must be sealed and must contain the following:
 - Bid Cover Sheet (Attachment A)
 - Bid Form (Attachment B)
 - Execution of Bid (Attachment C)
 - Completed specifications checklist

4. Acceptance of Bids

MDWFP reserves the right to reject any and all bids, to waive any informality in bids and unless otherwise specified by the bidders, to accept any items on the bid. The MDWFP reserves the right to modify or cancel in whole or in part its Invitation for Bids.

If a bidder fails to state the time within which a submitted bid will expire, it is understood and agreed that the MDWFP shall have 60 days to accept.

5. Error in Bid

If a vendor is participating in a Live Auction, the vendor can notify MDWFP in the event of an erroneous bid via the chat message feature. Erroneous bids, where the mistake is apparent to MDWFP, may be deleted during the live auction.

6. Special Discount Period

Time in connection with a special discount offered will be computed from date of delivery at destination or from the date correct invoices are received, if the latter date is later than the date of delivery. Cash discounts will not be considered in the award process.

7. Award

- 7.1 Contracts and purchases will be made or entered into with the lowest responsible bidder meeting specifications, except as otherwise specified in the bid specifications. Where more than one item is specified in the specifications, MDWFP reserves the right to determine the low bidder either on the basis of the individual item(s) or on the basis of all items included in its Invitation for Bids, or as expressly provided in MDWFP's Invitation for Bids.

- 7.2 Unless the bidder specified otherwise in the bid, MDWFP may accept any item or group of items of any kind.
- 7.3 A written purchase order or contract award furnished to the successful bidder within the time of acceptance specified in the Invitation for Bid results in a binding contract without further action by either party. The contract shall consist solely of these General Conditions, the Instructions and Special Conditions, the successful bidder's bid, and the written purchase order or contract award. The contract shall not be assignable in whole or in part without the written consent of MDWFP.
- 7.4 Suppliers should be advised that no award will automatically result from a reverse auction, and that the purchasing entity will review the results of the auction and make a determination in a timely manner.

8. Inspection

Final inspection and acceptance or rejection may be made at delivery destination, but all materials and workmanship shall be subject to inspection and test at all times and places, and when practicable. During manufacture, the right is reserved to reject articles which contain defective material and workmanship.

Rejected material shall be removed by and at the expense of the contractor promptly after notification or rejection. Final inspection and acceptance or rejection of the materials or supplies shall be made as promptly as practicable, but failure to inspect and accept or reject materials or supplies shall not impose liability on the MDWFP or any subdivision thereof for such materials or supplies as are not in accordance with the specification. In the event necessity requires the use of materials or supplies not conforming to the specification, payment therefore may be made at a proper reduction in price.

9. Taxes

The MDWFP is exempt from federal excise taxes and state and local sales or use taxes and bidders must quote prices which do not include such taxes. Exemption certificates will be furnished upon request. Contractors making improvements to, additions to or repair work on real property on behalf of the MDWFP are liable for any applicable sales or use tax on purchase of tangible personal property for use in connection with the contracts. Contractors are likewise liable for any applicable use tax on tangible personal property furnished to them by the MDWFP for use in connection with their contracts.

10. Gifts, Rebate, Gratuities

- 10.1 Acceptance of gifts from bidders is prohibited. No officer or employee of the MDWFP, nor any head of any state department, institution or agency, nor any employee of any state department, institution or agency charged with responsibility of initiating requisitions, shall accept or receive, directly or indirectly, from any person, firm or corporation to whom any contract for the purchase of materials, supplies, or equipment for the State of Mississippi may be awarded, by rebate, gifts, or otherwise, any money or anything of value whatsoever, or any promise, obligation or contract for future rewards or compensation.

- 10.2 Bidding by state employees is prohibited. It is unlawful for any state official or employee to bid on, or sell, or offer for sale, any merchandise equipment or material, or similar commodity to the State during the tenure of his or her office or employment, or for the period prescribed by law thereafter, or to have any interest in the selling of the same to the State.
11. **Bid Information**
Bid information and documents may be examined pursuant to the Mississippi Public Records Act of 1983, MS Code 25-61-1 et seq.
12. **Precedence**
Bids shall be made and the contract shall be entered into in accordance with the General Conditions as hereinafter amended and modified. Should a conflict exist between the General Conditions and the Instructions and Special Conditions, the Instructions and Special Conditions shall take precedence.
13. **Competition**
There are no federal or state laws that prohibit bidders from submitting a bid lower than a price or bid given to the U.S. Government. Bidders may bid lower than U.S. Government contract price without any liability as the State is exempt from the provisions of the Robinson-Patman Act and other related laws. In addition, the U.S. Government has no provisions in any of its purchasing arrangements with bidders whereby a lower price to the State must automatically be given to the U.S. Government.
14. **Waiver**
MDWFP reserves the right to waive any General Condition, Special Condition, or minor specification deviation when considered to be in the best interest of the State.
15. **Cancellation**
Any contract or item award may be canceled with or without cause by the MDWFP with the giving of 30 days written notice of intent to cancel. Cause for the MDWFP to cancel may include, but is not limited to, cost exceeding current market prices for comparable purchases; request for increase in prices during the period of the contract; or failure to perform to contract conditions. The Contractor will be required to honor all purchase orders that were prepared and dated prior to the date of expiration or cancellation if received by the Contractor within a period of 30 days following the date of expiration or cancellation. Cancellation by the MDWFP does not relieve the Contractor of any liability arising out of a default or nonperformance. If a contract is canceled by the MDWFP due to a Contractor's request for increase in prices or failure to perform, that Contractor will be disqualified from bidding for a period of 24 months. The Contractor may cancel a contract for cause with the giving of a 30-day written notice of intent to cancel. Cause for the Contractor to cancel may include, but is not limited to the item(s) being discontinued and/or unavailable from the manufacturer.

16. Substitutions during Contract

During the term of a contract, if adequate documentation is provided that supports the claim that the contract item(s) are not available, items which meet the minimum specifications may be substituted if approved by MDWFP and the substitutions are deemed to be in the best interest of the State.

17. Application

It is understood and agreed by the bidder that any contract entered into as a result of this Invitation for Bids is established for use by state agencies and all purchases made by these agencies for products included under the provisions of the contract shall be purchased from the bidder receiving the award unless exempt by special authorization from the MDWFP.

Under the provisions of Section 31-7-7 Mississippi Code of 1972, Annotated, the prices offered herein shall be extended to the governing authorities. However, the governing authorities, by provisions of Section 31-7-12 Mississippi Code, may purchase products covered by state contracts from any source offering an identical product at a price that does not exceed the state contract price.

Employees of the MDWFP have acted exclusively as agents of the State for the award, consummation, and administration of the contract and are not liable for any performance or nonperformance by the state agencies that utilize the contract.

18. Addenda

Addenda modifying plans and/or specifications may be issued if time permits. No addendum will be issued within a period of two (2) working days prior to the time and date set for the bid opening. Should it become necessary to issue an addendum within the two (2) day period prior to the bid opening, the bid date will be reset to a date not less than five (5) working days after the date of the addendum, giving bidders ample time to comply with the addendum. When replying to a bid request on which an addendum has been issued, and the specifications require acknowledgement, the bid shall indicate that provisions of the addendum have been noted and that the bid is being offered in compliance therewith. Failure to make this statement may result in the bid being rejected as not being in accordance with the revised specifications or plans.

19. Nonresponsive Bids

Nonresponsive bids will not be considered. A non-responsive bid is considered to be a bid that does not comply with the minimum provisions of the specification. Any bidder found to repeatedly offer alternated products that are not compliant with specifications in an attempt to obtain a contract on the basis of pricing only will be disqualified from bidding for a period of 24 months.

20. Specification Clarification

It shall be incumbent upon all bidders to understand the provisions of the specifications

and to obtain clarification prior to the time and date set for the live auction or bid opening. Such clarification will be answered only in response to a written request submitted in the specified amount of time set by the MDWFP. The MDWFP reserves the right to specify a time frame in which clarification request shall be made.

21. Pre-Qualification Process

- 21.1 The purpose of the RFQF is to advertise the competitive procurement for solicitation of formal quotes from potential bidders to participate in the Reverse Auction. The MDWFP will be responsible for defining product categories, adding bidders, and publishing all bid related documents to the procurement portal. Once the responses have been received and the Opening Date has been reached, the MDWFP will review the submissions to qualify bidders and determine a starting price for reverse auction items.
- 21.2 The Invitation for Bids/RFQF shall be advertised in accordance with Section 3.106.05.4 of the Mississippi Procurement Manual. The MDWFP shall advertise once each week for two (2) consecutive weeks in accordance with Section 31-7-13(c)(i)(1) of the Miss. Code Ann. Responses to the RFQF will be due no earlier than the 8th working day after the last day of advertisement.
- 21.3 The initial response to the Invitation for Bids shall include a proposed product, including specifications and/or samples, for the purchasing entity to evaluate and determine responsiveness to requirements. Responses to the RFQF will be reviewed by the MDWFP for responsiveness to specifications. Once a supplier's product is determined to be responsive, the supplier may participate in the reverse auction. Price quotes received will be evaluated in conjunction with other market research to determine the starting price for the Auction.
- 21.4 The MDWFP will accept bidder responses in MAGIC who have qualified meeting RFx specifications. Bidders not meeting specifications will not be allowed to participate in the Auction.
- 21.5 Once qualified, the MDWFP will notify the vendor of Qualification and the date of the Live Auction via email. After receiving the confirmation email, bidders should review/ensure technical requirements for MAGIC have been met or confirm participation in person.
- 21.6 It is requested that bids be submitted on the basis of statewide distribution. Contractors must maintain adequate distribution capabilities and adequate stock of all items to insure prompt delivery.

22. Firm Bid Price

Prices accepted from bidder submissions shall be firm for the term of the contract except that the State shall receive the benefit of any price decrease in excess of five (5) percent. The contractor must provide written price reduction information within ten (10) days of its effective date.

23. Contract Extension

- 23.1 Automatic contract renewals or extensions are not allowed. Contracts must be extended or renewed with the proper documents signed or approved by the MDWFP.
- 23.2 The MDWFP reserves the right to extend the term of a contract, when necessary, to continue a source of supply whenever new or replacement contracts are not completed prior to the expiration date. Such extensions are dependent upon the agreement of the Contractor and shall not exceed three (3) months.

24. Suspension and Debarment

By submitting a bid, the bidder is certifying that neither the bidder nor any potential subcontractors are debarred or suspended or are otherwise excluded from or ineligible for participation in federal assistance programs.

25. Assignment

The Contractor shall not assign or subcontract in whole or in part, its right or obligations under this agreement without prior written consent of the MDWFP.

26. Indemnification

Contractor shall indemnify, defend, save and hold harmless, protect, and exonerate the MDWFP, its Commissioners, Board Members, officers, employees, agents, and representatives from and against all claims, demands, liabilities, suits, actions, damages, losses, and costs of every kind and nature whatsoever, including, without limitation, court costs, investigative fees and expenses, and attorneys' fees, arising out of or caused by Contractor's and/or its partners, principals, agents, employees, and/or subcontractors in the performance of or failure to perform this Agreement. In the MDWFP's sole discretion, Contractor may be allowed to control the defense of any such claim, suit, etc. In the event Contractor defends said claim, suit, etc., Contractor shall use legal counsel acceptable to the MDWFP; Contractor shall be solely liable for all reasonable costs and/or expenses associated with such defense and the MDWFP shall be entitled to participate in said defense. Contractor shall not settle any claim, suit, etc., without the MDWFP's concurrence, which the MDWFP shall not unreasonably withhold.

27. Live Auction

- 27.1 Notification of Auction Start date and time will be sent via email to qualifying bidders. If a bidder is unwilling or unable to participate through MAGIC, a representative from the MDWFP can enter the Vendor's bid(s) manually (i.e. Surrogate Bidding). If a bidder elects to participate via Surrogate Bidding, the bidder must be physically present at the public bidding location, with the means to submit written bids for each offer made and signed by an authorized agent of the Vendor. A Bid Form will be provided to the Vendor at the start of the auction. This form will not be returned to the bidder but will become a part of the Bid Documentation for Evaluation by the MDWFP.

- 27.2 The Auction time may be extended at the discretion of the MDWFP. Examples of reasons to extend an auction include, but are not limited to, technical difficulties experienced by the MDWFP or bidder, the need to pause the Auction, or bids placed within the last few moments of bidding.
- 27.3 Communication with bidders participating electronically during the Auction may be done via the Live Chat Feature. The MDWFP has the ability to send messages to particular bidders or broadcast to all bidders. Bidders can ONLY communicate with the MDWFP and not other bidders.
- 27.4 Bidders may be removed from a Live Auction for improper conduct, including but not limited to profanity, threats, consistently entering erroneous or extremely low bids, or other disruptive behavior.
28. **The Timing of the Auction (RA Requirement).** The Invitation For Bids Shall Be Advertised In accordance with Section 3.106.05.4 herein, and the deadline to receive initial responses by suppliers shall be due no earlier than the 8th working day after the last day of advertisement. After such deadline has passed, the submissions shall be taken under advisement for prequalification. The reverse auction should occur only after the purchasing agent has had sufficient time to prequalify the suppliers. Such anticipated time shall be included in the Invitation for Bids Packet; however, the purchasing agent should reserve the right to extend the auction date if necessary to complete prequalification.
29. **Quotes (RA Requirement)** - Responding suppliers must provide a quote with the initial response. Quotes are utilized by the purchasing agent to determine market pricing and set the auction parameters (e.g., Start Price).
30. **Force Majeure**
If the MDWFP is closed for any reason, including but not limited to: acts of God, strikes, lockouts, riots, acts of war, epidemics, governmental regulations superimposed after the fact, fire, earthquakes, floods, or other natural disasters (the "Force Majeure Events"), which closure prevents the opening of bids at the advertised date and time, all bids received shall be publicly opened and read aloud on the next business day that the agency shall be open and at the previously advertised time. The new date and time of the bid opening, as determined in accordance with this paragraph, shall not be advertised, and all bidders, upon submission of a bid proposal, shall be deemed to have knowledge of and shall have agreed to the provisions of this paragraph. Bids shall be received by the agency until the new date and time of the bid opening as set forth herein. The MDWFP shall not be held responsible for the receipt of any bids for which the delivery was attempted and failed due to the closure of the MDWFP as a result of a Force Majeure Event. Each bidder shall be required to ensure the delivery and receipt of its bid by the MDWFP prior to the new date and time of the live auction or bid opening.

SECTION II INSTRUCTIONS AND SPECIAL CONDITIONS

1. **Purpose**

The Mississippi Department of Wildlife, Fisheries, and Parks requests sealed bids for printing, binding, and mailing services for Mississippi Outdoors magazine. It is understood that any contract resulting from RFX #3140003310 requires approval by the Office of Purchasing, Travel and Fleet Management (OPTFM). If any contract resulting from RFX #3140003310 is not approved by the OPTFM, it is void and no payment shall be made.

2. **Scope of Services**

The specifications set forth herein as “**Section III**” represent a minimum of required equipment and operational needs of the Mississippi Department of Wildlife, Fisheries, and Parks. The bidder may propose options above and beyond these specifications that best suit MDWFP’s interests as determined by the agency. The bidder agrees to begin delivery within **30 days** of award. Failure to do so may result in cancellation of award. If cancellation of award occurs, a new award will be made to the next lowest bidder meeting required specifications. Please respond “Yes” or “No” to indicate compliance to the specifications for each listed criterion and add comments as needed.

3. **Bid Acceptance Period**

The bid cover sheet, the bid form, and the execution of bid form, shall be signed and submitted in a sealed envelope or package to the Mississippi Department of Wildlife, Fisheries, and Parks, 1505 Eastover Drive, Jackson, MS 39211, no later than the time and date specified for receipt of bids. Timely submission of the bid forms is the responsibility of the bidder. Bids received after the specified time shall be rejected and returned to the bidder unopened. The envelope or package shall be marked with the bid opening date and time, and the number of the invitation for bid. The time and date of receipt shall be indicated on the envelope or package by Support Services. Each page of the bid form and all attachments shall be identified with the name of the bidder. Failure to submit a bid on the bid form provided shall be considered just cause for rejection of the bid. Modifications or additions to any portion of the procurement document may be cause for rejection of the bid. The MDWFP reserves the right to decide, on a case-by-case basis, whether to reject a bid with modifications or additions as non-responsive. As a precondition to bid acceptance, the MDWFP may request the bidder to withdraw or modify those portions of the bid deemed non-responsive that do not affect quality, quantity, price, or delivery of the service.

3.1 Timeline

Start Date <ul style="list-style-type: none">First Date of Advertisement:Second Date of Advertisement	November 10, 2022 November 18, 2022
Bidder Submission Deadline Date and Time	November 30, 2022, 2:00 PM CT
Opening Date and Time	November 30, 2022, 2:00 PM CT
Email sent to Qualified Bidders of Auction Start Date/Time	December 1, 2022
Tentative Reverse Auction Start Date/Time	December 2, 2022, 10:00 AM CT
Bid Evaluations	December 2, 2022
Anticipated Contract Intent to Award	December 2, 2022
Contract Approval	Unexecuted contract will require additional approval from DFA before it is awarded.

3.2. Late Submissions

A bid received at the place designated in the solicitation for receipt of bids after the exact time specified for receipt will not be considered unless it is the only bid received, or it is received before award is made and was sent by registered or certified mail not later than the fifth (5th) calendar day before the date specified for receipt of bids. It must be determined by the MDWFP that the late receipt was due solely to mishandling by the MDWFP after receipt at the specified address.

The only acceptable evidence to establish the date of mailing of a late bid is the U.S. Postal Service postmark on the wrapper or on the original receipt from the U.S. Postal Service. If the postmark does not show a legible date, the contents of the envelope or package shall be processed as if mailed late. "Postmark" means a printed, stamped, or otherwise placed impression, exclusive of a postage meter impression, that is readily identifiable without further action as having been supplied and affixed by the U.S. Postal Service on the date of mailing. Bidders should request postal clerks to place a hand cancellation postmark (often called a bull's eye) on both the receipt and the envelope or wrapper. The only acceptable evidence to establish the time of receipt at the office identified for bid opening is the time and date stamp of that office on the bid wrapper or other documentary evidence of receipt used by that office.

4. Expenses Incurred In Preparing Bid

The MDWFP accepts no responsibility for any expense incurred by the bidder in the preparation and presentation of a bid. Such expenses shall be borne exclusively by the bidder.

5. Bid Form

All pricing must be submitted on the bid form (**Attachment B**). Failure to complete and/or

sign the bid form may result in the bidder being determined nonresponsive.

5.1.1 Bidder Certification

The bidder agrees that submission of a signed bid form is certification that the bidder will accept an award made to it as a result of the submission.

6. Registration with Mississippi Secretary Of State

By submitting a bid, the bidder certifies that it is registered to do business in the State of Mississippi as prescribed by the Mississippi Secretary of State or, if not already registered, that it will do so within seven (7) business days of being offered an award. Sole proprietors are not required to register with the Mississippi Secretary of State.

7. Additional Information

Questions and requests for clarification must be submitted in writing to Leigh Washington at procurement@wfp.ms.gov. Bidders are cautioned that any statements made by contact persons that cause a material change to any portion of the bid document shall not be relied upon unless subsequently ratified by a formal written amendment to the bid document.

8. Applicable Law. This contract shall be governed by and construed in accordance with the laws of the State of Mississippi, excluding its conflict of laws provisions, and any litigation with respect thereto shall be brought in the courts of the State. Contractor shall comply with applicable federal, state and local laws and regulations.

9. Availability of Funds. It is expressly understood that the obligation of the MDWFP to proceed under this agreement is conditioned upon the appropriation of funds by the Mississippi State Legislature and the receipt of state and/or federal funds. If the funds anticipated for the continuing fulfillment of the agreement are, at any time, not forthcoming or insufficient, either through the failure of the federal government to provide funds or of the State of Mississippi, to appropriate funds or the discontinuance or material alteration of the program under which funds were provided or if funds are not otherwise available to the MDWFP, the MDWFP shall have the right upon ten (10) working days notice to the Independent Contractor, to terminate this agreement without damage, penalty, cost or expenses to the MDWFP of any kind whatsoever. The effective date of termination shall be as specified in the notice of termination.

10. Compliance with Laws. Contractor understands that the MDWFP is an equal opportunity employer and therefore, maintains a policy which prohibits unlawful discrimination based on race, color, creed, sex, age, national origin, physical handicap, disability, genetic information, or any other consideration made unlawful by federal, state, or local laws. All such discrimination is unlawful and contractor agrees during the term of the agreement that contractor will strictly adhere to this policy in its employment practices and provision of services. Contractor shall comply with, and all activities under this agreement shall be subject to, all applicable federal, state of Mississippi, and local laws and regulations, as now existing and as may be amended or modified.

11. **E-Payment.** Contractor agrees to accept all payments in United States currency via the State of Mississippi's electronic payment and remittance vehicle. The agency agrees to make payment in accordance with Mississippi law on "Timely Payments for Purchases by Public Bodies," Mississippi Code Annotated § 31-7-301, *et seq.*, which generally provides for payment of undisputed amounts by the agency within forty-five (45) days of receipt of invoice. Mississippi Code Annotated § 31-7-301 *et seq.*
12. **E-Verification.** If applicable, Contractor represents and warrants that it will ensure its compliance with the Mississippi Employment Protection Act of 2008, and will register and participate in the status verification system for all newly hired employees. Mississippi Code Annotated §§ 71-11-1 *et seq.* The term "employee" as used herein means any person that is hired to perform work within the State of Mississippi. As used herein, "status verification system" means the Illegal Immigration Reform and Immigration Responsibility Act of 1996 that is operated by the United States Department of Homeland Security, also known as the E-Verify Program, or any other successor electronic verification system replacing the E-Verify Program. Contractor agrees to maintain records of such compliance. Upon request of the State and after approval of the Social Security Administration or Department of Homeland Security when required, Contractor agrees to provide a copy of each such verification. Contractor further represents and warrants that any person assigned to perform services hereafter meets the employment eligibility requirements of all immigration laws. The breach of this agreement may subject Contractor to the following:
- termination of this contract for services and ineligibility for any state or public contract in Mississippi for up to three (3) years with notice of such cancellation/termination being made public; or
 - the loss of any license, permit, certification or other document granted to Contractor by an agency, department or governmental entity for the right to do business in Mississippi for up to one (1) year; or,
 - both. In the event of such cancellation/termination, Contractor would also be liable for any additional costs incurred by the State due to contract cancellation or loss of license or permit to do business in the State.

In the event of such cancellation/termination, Contractor would also be liable for any additional costs incurred by the State due to contract cancellation or loss of license or permit to do business in the State.

13. **Force Majeure.** Each party shall be excused from performance for any period and to the extent that it is prevented from performing any obligation or service, in whole or in part, as a result of causes beyond the reasonable control and without the fault or negligence of such party and/or its subcontractors. Such acts shall include without limitation acts of God, strikes, lockouts, riots, acts of war, epidemics, governmental regulations superimposed after the fact, fire, earthquakes, floods, or other natural disasters ("force majeure events"). When such a cause arises, Contractor shall notify the State immediately in writing of the

cause of its inability to perform, how it affects its performance, and the anticipated duration of the inability to perform. Delays in delivery or in meeting completion dates due to force majeure events shall automatically extend such dates for a period equal to the duration of the delay caused by such events, unless the State determines it to be in its best interest to terminate the agreement.

14. **Independent Contractor Status.** Contractor shall, at all times, be regarded as and shall be legally considered an independent contractor and shall at no time act as an agent or employee of MDWFP. Nothing contained herein shall be deemed or construed by MDWFP, Contractor, or any third party as creating the relationship of principal and agent, master and servant, partners, joint ventures, employer and employee, or any similar such relationship between the MDWFP and Contractor. Neither the method of computation of fees or other charges, nor any other provision contained herein, nor any acts of the MDWFP or Contractor hereunder creates, or shall be deemed to create a relationship other than the independent relationship of the MDWFP and Contractor. Contractor's personnel shall not be deemed in any way, directly or indirectly, expressly or by implication, to be employees of the State. Neither Contractor nor its employees shall, under any circumstances, be considered servants, agents, or employees of the MDWFP, and the MDWFP shall be at no time legally responsible for any negligence or other wrongdoing by Contractor, its servants, agents, or employees. The MDWFP shall not withhold from the contract payments to Contractor any federal or state unemployment taxes, federal or state income taxes, Social Security tax, or any other amounts for benefits to Contractor. Further, the MDWFP shall not provide to Contractor any insurance coverage or other benefits, including Worker's Compensation, normally provided by the State for its employees. All of the Contractor's activities will be at its own risk and Contractor is hereby given notice of its responsibility for arrangement to guard against physical, financial, and other risks as appropriate. Contractor shall observe and abide by all applicable laws and regulations including, but not limited to, those of MDWFP relative to conduct on its premises.
15. **Modification or Renegotiation.** This agreement may be modified only by written agreement signed by the parties hereto. The parties agree to renegotiate the agreement if federal and/or state revisions of any applicable laws or regulations make changes in this agreement necessary.
16. **Notices.** All notices required or permitted to be given under this agreement must be in writing and personally delivered or sent by certified United States mail, postage prepaid, return receipt requested, to the party to whom the notice should be given at the address set forth below. Notice shall be deemed given when actually received or when refused. The parties agree to promptly notify each other in writing of any change of address.

For the MDWFP:	For Contractor:
Lynn Posey, Executive Director	

Mississippi Department of Wildlife, Fisheries, and Parks	
1505 Eastover Drive	
Jackson, Mississippi 39211	

17. **Paymode.** Payments by state agencies using the State's accounting system shall be made and remittance information provided electronically as directed by the State. These payments shall be deposited into the bank account of Contractor's choice. The State may, at its sole discretion, require Contractor to electronically submit invoices and supporting documentation at any time during the term of this Agreement. Contractor understands and agrees that the State is exempt from the payment of taxes. All payments shall be in United States currency.
18. **Representation Regarding Contingent Fees.** Contractor represents that it has not retained a person to solicit or secure a state contract upon an agreement or understanding for a commission, percentage, brokerage, or contingent fee, except as disclosed in Contractor's bid or proposal.
19. **Termination for Convenience.**
 - a. *Termination.* The MDWFP Head or designee may, when the interests of the State so require, terminate this contract in whole or in part, for the convenience of the State. The MDWFP Executive Director or designee shall give written notice of the termination to contractor specifying the part of the contract terminated and when termination becomes effective.
 - b. *Contractor's Obligations.* The contractor shall incur no further obligations in connection with the terminated work and on the date set in the notice of termination the contractor will stop work to the extent specified. The contractor shall also terminate outstanding orders and subcontracts as they relate to the terminated work. The contractor shall settle the liabilities and claims arising out of the termination of subcontracts and orders connected with the terminated work. The MDWFP Executive Director or designee may direct the contractor to assign the contractor's right, title, and interest under terminated orders or subcontracts to the State. The contractor must still complete the work not terminated by the notice of termination and may incur obligations as are necessary to do so.
20. **Termination for Default.**
 - a. *Default.* If Contractor refuses or fails to perform any of the provisions of this contract with such diligence as will ensure its completion within the time specified in this contract or any extension thereof, or otherwise fails to timely satisfy the contract provisions, or commits any other substantial breach of this contract, the MDWFP Executive Director or designee may notify Contractor in writing of the delay or nonperformance and if not cured in ten (10) days or any longer time specified in writing by the MDWFP Executive Director or designee, such officer may terminate Contractor's right to proceed with the contract or such part of the contract as to which

there has been delay or a failure to properly perform. In the event of termination in whole or in part, the MDWFP Executive Director or designee may procure similar supplies or services in a manner and upon terms deemed appropriate by the MDWFP Executive Director or designee. Contractor shall continue performance of the contract to the extent it is not terminated and shall be liable for excess costs incurred in procuring similar goods or services.

- b. *Contractor's Duties.* Notwithstanding termination of the contract and subject to any directions from the procurement officer, Contractor shall take timely, reasonable, and necessary action to protect and preserve property in the possession of Contractor in which the State has an interest.
- c. *Compensation.* Payment for completed services delivered and accepted by the State shall be at the contract price. The State may withhold from amounts due Contractor such sums as the MDWFP Executive Director or designee deems to be necessary to protect the State against loss because of outstanding liens or claims of former lien holders and to reimburse the State for the excess costs incurred in procuring similar goods and services.
- d. *Excuse for Nonperformance or Delayed Performance.* Except with respect to defaults of subcontractors, Contractor shall not be in default by reason of any failure in performance of this contract in accordance with its terms (including any failure by Contractor to make progress in the prosecution of the work hereunder which endangers such performance) if Contractor has notified the MDWFP Executive Director or designee within fifteen (15) days after the cause of the delay and the failure arises out of causes such as: acts of God; acts of the public enemy; acts of the State and any other governmental entity in its sovereign or contractual capacity; fires; floods; epidemics; quarantine restrictions; strikes or other labor disputes; freight embargoes; or unusually severe weather. If the failure to perform is caused by the failure of a subcontractor to perform or to make progress, and if such failure arises out of causes similar to those set forth above, Contractor shall not be deemed to be in default, unless the services to be furnished by the subcontractor were reasonably obtainable from other sources in sufficient time to permit Contractor to meet the contract requirements. Upon request of Contractor, the MDWFP Executive Director or designee shall ascertain the facts and extent of such failure, and, if such officer determines that any failure to perform was occasioned by any one or more of the excusable causes, and that, but for the excusable cause, Contractor's progress and performance would have met the terms of the contract, the delivery schedule shall be revised accordingly, subject to the rights of the State under the clause entitled in fixed-price contracts, "Termination for Convenience". (As used in this Paragraph of this clause, the term "subcontractor" means subcontractor at any tier).
- e. *Erroneous Termination for Default.* If, after notice of termination of Contractor's right to proceed under the provisions of this clause, it is determined for any reason that the contract was not in default under the provisions of this clause, or that the delay was excusable under the provisions of Paragraph (4) (Excuse for Nonperformance or Delayed Performance) of this clause, the rights and obligations of the parties shall, if the contract contains a clause providing for termination for convenience of the State,

- be the same as if the notice of termination had been issued pursuant to such clause.
- f. *Additional Rights and Remedies.* The rights and remedies provided in this clause are in addition to any other rights and remedies provided by law or under this contract.
21. **Termination upon Bankruptcy.** This contract may be terminated in whole or in part by MDWFP upon written notice to Contractor, if Contractor should become the subject of bankruptcy or receivership proceedings, whether voluntary or involuntary, or upon the execution by Contractor of an assignment for the benefit of its creditors. In the event of such termination, Contractor shall be entitled to recover just and equitable compensation for satisfactory work performed under this contract, but in no case shall said compensation exceed the total contract price.
22. **Trade Secrets, Commercial and Financial Information.** It is expressly understood that Mississippi law requires that the provisions of this contract which contain the commodities purchased or the personal or professional services provided, the price to be paid, and the term of the contract shall not be deemed to be a trade secret or confidential commercial or financial information and shall be available for examination, copying, or reproduction.
23. **Transparency.** This contract, including any accompanying exhibits, attachments, and appendices, is subject to the "Mississippi Public Records Act of 1983," and its exceptions. See Mississippi Code Annotated §§ 25-61-1 *et seq.* and Mississippi Code Annotated § 79-23-1. In addition, this contract is subject to the provisions of the Mississippi Accountability and Transparency Act of 2008. Mississippi Code Annotated §§ 27-104-151 *et seq.* Unless exempted from disclosure due to a court-issued protective order, a copy of this executed contract is required to be posted to the Department of Finance and Administration's independent agency contract website for public access at <http://www.transparency.mississippi.gov>. Information identified by Contractor as trade secrets, or other proprietary information, including confidential vendor information or any other information which is required confidential by state or federal law or outside the applicable freedom of information statutes, will be redacted.
24. **Protest of Award**
Any actual or prospective bidder or contractor who is aggrieved in connection with this solicitation or the outcome of the Invitation for Bids may file a protest with the RFQF Coordinator, Leigh Washington. All protests must be in writing, dated, signed by the bidder or an individual authorized to sign contracts on behalf of the protesting bidder, and contain a statement of the reason(s) for protest, citing the law(s), rule(s) or regulation(s), and/or procedure(s) on which the protest is based.
- Protests shall be made in writing and shall be filed in duplicate within seven (7) days after the protestor knows or should have known of the facts giving rise thereto. A protest is considered filed when received by the Chief Procurement Officer or the head of a purchasing agency. Protests filed after the seven (7) day period shall not be considered.

SECTION II – A INSTRUCTIONS AND SPECIAL CONDITIONS

The following section provides a DFA MAGIC Reverse Auction Bidders Training Guide. It includes detailed instructions on how to access the reverse auction event, including how to gain access to the system utilized and what technical requirements may be involved. However, no supplier may be prohibited from participating in person by paper through surrogate bidding.



MAGIC Reverse Auction Bidders Training Guide

The MAGIC Reverse Auction Bidders Training Guide provides instructions for vendors to participate in Reverse Auctions. Vendors have the ability to submit bids electronically and view real time bid ranking. The identity of participating bidders will not be displayed to other bidders throughout the online auction process. However, bidders will be able to see the current best bid.

Contents

Technical Requirements	19
Login Procedure	19
View Available Reverse Auctions	20
Search for Auction(s)	20
Display Auction Details	22
Display Line Items	23
Display Notes and Attachments	25
Participating in a Live Auction	25
Live Auction Cockpit	26
Chat and System Messages	29
Pausing and/or Resuming an Auction	30



Technical Requirements

Bidders are responsible for ensuring technical requirements are met.

Acceptable Internet Browser(s)

- Microsoft Internet Explorer (IE) version 11
- Google Chrome versions 49 and above (will need to download and install a Chrome Extension called "IE Tab Extension")

Unsupported Internet Browser(s)

- Microsoft Internet Explorer (IE) version 10 or below
- Microsoft Edge
- Google Chrome
- Safari
- Firefox

Note: Pop-up blocker must be turned off.

Java

- Reverse Auction requires Java version 6.30 or higher. Java can be downloaded from following Web site.

<https://www.java.com/en/download/>

Login Procedure

Vendors must be registered in MAGIC in order to receive a User ID and password to log in. Vendors who are new to MAGIC may visit the [Vendor Information page](#) on DFA's Web Site, or register online, [Vendor Registration](#).

To Log into MAGIC, open the following URL: <https://portal.magic.ms.gov/iri/portal>. Enter User ID and Password. The password is case sensitive.

MAGIC
Mississippi Accountability System for Government Information and Collaboration

Having password problems? Please click on this [link](#) for help...

User *

Password *

MAGIC is the Mississippi Accountability System for Government Information and Collaboration.

If you need access or additional information please go to the below website:
<http://www.dfa.ms.gov/dfa-offices/mmrs>



View Available Reverse Auctions

Search for Auction(s)

Listed below are the steps to search for a bid response.

1.) **Bidders must first respond to the RfX (RFQF) to be able to participate in the Reverse Auction.**

Instructions for creating a response to an RfX are available here, [RfX Response -Supplier Self Service](#).

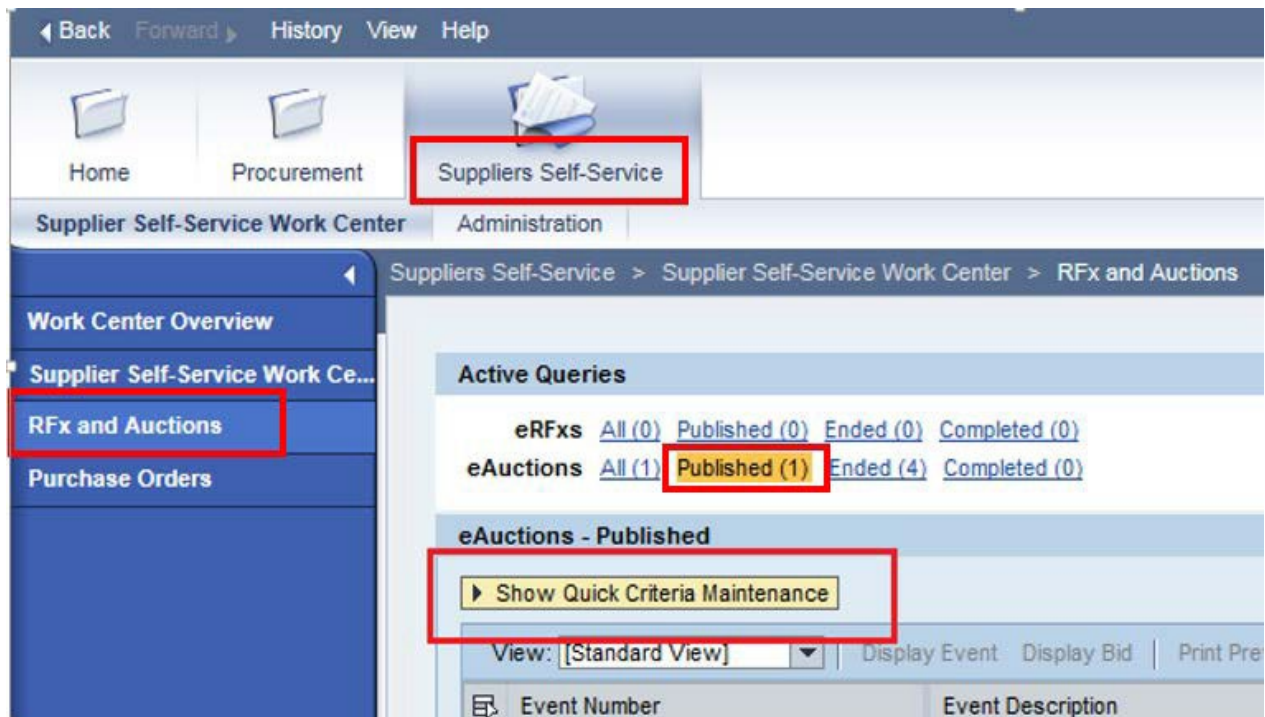
The RfX (RFQF)— Bid Specifications will provide details for qualifying criteria. Only bidders qualified through the RfX (RFQF) will be invited to participate in Reverse Auctions.

2.) To search for auctions, click on the **Suppliers Self-Service** tab.

3.) Select **RfX and Auctions** in the navigation menu on the left of the screen.

4.) Select the **Published** link on the eAuctions line of the Active Queries section.

Note: If the search fields are not visible, click the  button to expand the search criteria.





5.) Enter the search criteria. To find all available bid opportunities, skip to step (f).

- a) Select **All** or **Published** to search for available Events (eAuctions).
- b) Enter the appropriate *Quick Criteria Maintenance* fields: **Event Number** (Auction number) or complete any optional relevant search criteria.
- c) Click on **Apply** to view all Auctions based on your search criteria.
- d) To generate an updated search using the same selection criteria, click **Refresh** or skip to step (7).

6.) Click **Apply** to find available bid opportunities.

7.) In the results list, click on the **Event Number** to open the Auction details in a separate window. (Pop-up blocker must be turned off.)

The screenshot displays the MAGIC (Mississippi Accountability System for Government Information and Collaboration) Supplier Self-Service Work Center. The interface includes a navigation menu on the left with options like 'Work Center Overview', 'Supplier Self-Service Work Center', 'RFx and Auctions', and 'Purchase Orders'. The main content area shows the 'eAuctions - All' search results. A red box highlights the 'Active Queries' section, which includes 'eAuctions All (1) Published (1) Ended (0) Completed (0)'. Below this, the 'Quick Criteria Maintenance' section is highlighted, showing search criteria for 'Event Number' (3300000092), 'Event Status' (Active), 'Creation Date', 'Deadline Date Flag', 'Status', 'My RFx Responses From', and 'Smart Number'. The 'Apply' button is highlighted. Below the criteria, the 'View' dropdown is set to 'Standard View', and the 'Refresh' button is highlighted. The search results table is highlighted, showing one result for Event Number 3300000092, Event Description 1130-18-R-RAEX-00002, Event Type English Auction, Event Status Active, Start Date 10/20/2017, End Date 10/27/2017, Bid Number, and Bid Status No Bid Created.

Event Number	Event Description	Event Type	Event Status	Start Date	End Date	Bid Number	Bid Status
3300000092	1130-18-R-RAEX-00002	English Auction	Active	10/20/2017	10/27/2017		No Bid Created



Display Auction Details

Listed below are the steps view the auction details and information regarding the auction.

- 1.) The Auction Details screen will be displayed. It is important to review the details prior to the Auction begin time. Bidding will not be available prior to the Auction Start Date / Time.

The table below list the fields and a brief description of the information available on the Auction Parameters sub-tab of the Auction Information tab.

Display Auction: 3300000092

Print Preview
Close
Live Auction

3 Days 11:41:05 Remaining Time
Number 3300000092
Name 1130-18-R-RAEX-00002
Owner First Last
Status Active
Currency USD
Start Date 20.10.2017 13:58:45 CST
End Date 27.10.2017 01:00:00 CST

Auction Information
Items
Notes and Attachments

Auction Parameters
Notes and Attachments

Identification
Name: 1130-18-R-RAEX-00002
Type: English Auction
Product Category:
Currency: USD

Dates
Start Date: 10/20/2017 01:58:45 pm
End Date: 10/27/2017 01:00:00 am
Time Zone: CST

Event Parameters
Bid Decrement: Absolute
Bid Validation: New bid must beat overall best bid
Follow On Document: Contract
Sequential Line Items: ☐
Sequential Initial Duration: 0
Sequential End-Time Gap: 0

Automatic Extensions:
Remaining Time Trigger: 0
Extension Period: 0
Number of Extensions: 0

Status and Statistics
Creation Date: 10/03/2017 04:27:46 pm
Created By: SRMBUYER04

Section	Field Name	Description
Identification	Name	Smart Number with details related to the RFx
	Type	English Auction is the standard for State of Mississippi
	Product Category	The 5 digit NIGP code (optional)
	Currency	US Dollar (USD)
Dates	Start Date	Begin Date and Time for the Live Auction
	End Date	Date and Time of Live Auction completion
	Time Zone	Central Standard Time (CST)
Event Parameters	Bid Decrement	The amount/percentage by which the next bid must decrease relevant to the current lowest bid.
	Bid Validation	Logic used to determine if the bid is valid.
	Follow On Document	Contract or Purchase Order
	Sequential Line Items	Enables sequential line item functionality to stagger end times.
	Sequential Initial Duration	The amount of time in between each line item end time.
Automatic	Sequential End-Time Gap	The time between item end times.
	Remaining Time Trigger	The time period before the end of the auction where an



Extensions		extension can be triggered due to bid activity.
	Extension Period	Number of minutes, for which the auction will be extended if a bidder submits an offer within the Remaining Time Trigger period.
	Number of Extensions	The number of times an auction can be extended by bid activity within the Remaining Time Trigger.
Status and Statistics	Creation Date	The date and time the auction was created.
	Created By	The User ID of the Agency Buyer who created the auction.

Display Line Items

Listed below is information regarding the line items associated with the auction.

1.) Click the **Items** tab to view the line items.

Display Auction: 3300000092

Print Preview | Close | Live Auction

3 Days 11:41:05 Remaining Time | Number 3300000092 | Name 1130-18-R-RAEX-00002 | Owner First Last | Status Active | Currency USD

Start Date 20.10.2017 13:58:45 CST | End Date 27.10.2017 01:00:00 CST

Auction Information | **Items** | Notes and Attachments

▼ Item Overview

Details | Copy | Paste | Expand All | Collapse All | Filter Settings

Line Number	Item Type	Product ID	Description	Lot	Quantity	Unit	Start Price	Bid Decrement Amount	Delivery Date	Notes	Attachments
1	Material		TEST 01		1,000	AU	10,000,00	10,00		0 / 0	0 / 0
2	Material		TEST 02		1,000	AU	10,000,00	10,00		0 / 0	0 / 0
3	Material		TEST 03		1,000	EA	10,000,00	10,00		0 / 0	0 / 0
4	Material		TEST 04		1,000	EA	10,000,00	10,00		0 / 0	0 / 0

If the items are in **Lots**, the main items will be listed with individual lot items below.

Number 3300000165 | Name 1130-18-R-RFQ-00007 | Type English Auction | Status Saved | Number of Bidders 11

Auction Information | Bidders | **Items** | Notes and Attachments | Bidder View | Tracking

▼ Item Overview

Details | Add Item | Copy | Paste | Duplicate | Delete

Line Number	Item Type	Product ID	Description	Lot	Product Category	Quantity	Unit	Start Price	Reference Price	Reserve Price	Price Unit	Bid Decrement
1			APRONS	✓				0.00	0.00	0.00		
1.1	Material		Big		10004	300	EA		0.00	0.00		1
1.2	Material		Small		10004	400	EA		0.00	0.00		1
1.3	Material		Medium		10004	300	EA		0.00	0.00		1
2			UNIFORM	✓				0.00	0.00	0.00		
2.1	Material		Big		10004	300	EA		0.00	0.00		1
2.2	Material		Small		10004	400	EA		0.00	0.00		1
2.3	Material		Medium		10004	300	EA		0.00	0.00		1
3			HATS	✓				0.00	0.00	0.00		
3.1	Material		top hats		10004	1,000	EA		0.00	0.00		1
3.2	Material		cowboy hats		10004	5,000	EA		0.00	0.00		1
3.3	Material		baseball caps		10004	10,000	EA		0.00	0.00		1

2.) To view additional details for a line item, select the desired line and click the **Details** button.



Display Auction: 3300000092

Print Preview | Close | Live Auction

3 Days 11:41:05 Remaining Time | Number 3300000092 | Name 1130-18-R-RAEX-00002 | Owner First Last | Status Active | Currency USD

Start Date 20.10.2017 13:58:45 CST | End Date 27.10.2017 01:00:00 CST

Auction Information | **Items** | Notes and Attachments

▼ Item Overview

Details | Copy | Paste | Expand All | Collapse All | Filter Settings

Line Number	Item Type	Product ID	Description	Lot	Quantity	Unit	Start Price	Bid Decrement Amount	Delivery Date	Notes	Attachments
1	Material	TEST 01			1,000	AU	10,000,00	10,00		0 / 0	0 / 0
2	Material	TEST 02			1,000	AU	10,000,00	10,00		0 / 0	0 / 0
3	Material	TEST 03			1,000	EA	10,000,00	10,00		0 / 0	0 / 0
4	Material	TEST 04			1,000	EA	10,000,00	10,00		0 / 0	0 / 0

3.) The details for the line item will be displayed.

Item 1 : TEST 01

Item Data | Notes and Attachments

Identification

Item Type: Material

Product ID:

Description: TEST 01

Product Category: 86300

Currency, Values and Pricing

Quantity / Unit: 1,000 AU

Price Per Unit: 1 Activity unit

Start Price: 10,000,00 USD

Ceiling Price: 0,00 USD

Bid Decrement Percent: 0,00

The table below list the fields and a brief description of the information available for each line item.

Section	Field Name	Description
Identification	Item Name	Type of item (Material)
	Product ID	11 digit material number
	Description	Detailed description of the item
	Product Category	The 5 digit NIGP code
Currency, Values, and Pricing	Quantity /Unit	The number of items / the Unit of Measure (i.e. EA for each)
	Price Per Unit	The individual price based on the Unit of Measure indicated.
	Start Price	Starting bid price of the item (Bids higher than the start price will not be accepted.)
	Ceiling Price	Ceiling Price is not used.
	Bid Decrement Percent	Bid decrement amount if percentage option is selected.
	Bid Decrement	Bid decrement amount if dollar amount option is selected.



Display Notes and Attachments

Click the **Notes and Attachments** tab to view supporting documents and/or notes associated with the auction.

Display Auction: 3300000092

Print Preview | | Close | Live Auction

3 Days 11:31:45 Remaining Time | Number 3300000092 | Name 1130-18-R-RAEX-00002 | Owner First Last | Status Active | Currency USD
Start Date 20.10.2017 13:58:45 CST | End Date 27.10.2017 01:00:00 CST

Auction Information | Items | **Notes and Attachments**

▼ Notes

Add | Clear

Assigned To	Category	Text Preview

▼ Attachments

Add Attachment | Edit Description | Versioning | Delete | Create Qualification Profile

Assigned To	Category	Description	File Name	Version	Processor	Checked Out	Type	Size (KB)	Changed by
Document Header	Standard Attachment	test	3160000714.MHTML	1		<input type="checkbox"/>	MHTML	55	SRMBUYER04

Participating in a Live Auction

After completing the steps above to find a desired auction, the steps below can be used to participate in the Live Auction process.

- 1.) With the Auction displayed, click the **Live Auction** button.

Display Auction: 3300000092

Print Preview | | Close | **Live Auction**

3 Days 11:25:52 Remaining Time | Number 3300000092 | Name 1130-18-R-RAEX-00002 | Owner First Last | Status Active | Currency USD
Start Date 20.10.2017 13:58:45 CST | End Date 27.10.2017 01:00:00 CST

Auction Information | Items | Notes and Attachments

- 2.) A pop-up window will appear containing Terms and Conditions to participate in the Live Auction. Review all terms and conditions. If you agree, click **Accept**. If you click **Decline** you will not be allowed to participate in the Live Auction.

If the agency did not establish Terms and Conditions this screen will not be displayed.

Terms and Conditions

These are the conditions of participation. Do you Accept?

☐ Accept ☐ Decline



3.) If any pop-ups appear asking for a confirmation to run the JAVA application, click **Run**.



4.) The Live Auction bidding screen will be displayed. If you receive any error messages, please ask your company's system administrator to verify your computer's technical requirements.

Live Auction Cockpit

The Live Auction Cockpit will be displayed when the JAVA application has run.

Listed below is information regarding key items for the Live Auction Cockpit. The steps for submitting a response are located on the next page.

Live Auction Cockpit												
Name: 1130-18-R-RFQI-00030				Requester: 1130_SRGBOS1								
Number: 3300000163				Currency: USD				Start Date: 08/23/2017 10:38:30 AM CDT				
Rule Profile: Reverse auction with broken lot, full quantity, anonymous bidding								End Date: 08/23/2017 10:50:00 AM CDT				
Description:								Time Remaining: 00:08:06 (Active)				
Item	Description	Quantity	Unit	Price Unit	Start Price	Decrement	Rank	My Bid	My Bid Value	Best Bid	Next Valid Bid	Bid Price
1	Pencils	100	each	1	19.00	-	-	-	-	10.00	10.00	
2	Pens	200	Case	1	20.00	-	-	-	-	11.00	11.00	
3	Folders	300	Pail	1	29.00	-	-	-	-	22.00	22.00	
4	Books	400	Drum	1	34.00	-	-	-	-	28.00	28.00	
												Total Value of M
Details		Item	1									
History		Description	Pencils									
Charts		Quantity	100									
Calculation		Unit	each									
		Price Unit	1									
		Currency	USD									
		Start Price	19.00									
		Decrement	0.00									
		Revision Level										
		Supplier Text										



Field Name	Description
Start Date	Date and Time the Live Auction starts
End Date	Date and Time the Live Auction ends
Time Remaining	The time remaining for the Live Auction
Description	Line item description
Quantity	Line item quantity
Unit	Line item unit
Price Unit	Line item price per unit
Start Price	The initial price for the line item.
Best Bid	The lowest bid that has been submitted, to date, for that line item. This field will be blank until the first bid has been submitted.
Next Valid Bid	The next price that is allowed to be bid for that line item. It is determined by subtracting the decrement amount from the best bid amount.
Bid Price	Your bid for the item. Your bid should be equal or less than the next valid bid field. For instructions on how to enter your bid price, see the next page.

Submitting a Bid Response

The steps below must be completed for each separate line item you wish to bid on.

1. Click desired line item.
2. Enter the price in the **Bid Price** field(s) for the items you wish to bid on.

Live Auction Cockpit

Name: 1130-18-R-RFQF-00025
Number: 3300000120
Rule Profile: Reverse auction with broken lot, full quantity, anonymous bidding
Description:

Requester: 1130_SRMBS01
Start Date: 10/16/2017 10:06:00 AM CDT
End Date: 10/19/2017 9:59:00 AM CDT
Time Remaining: 00:00:00 (Ended)

Item	Description	Quantity	Unit	Price Unit	Start Price	Decrement	Rank	My Bid	My Bid Value	Best Bid	Next Valid Bid	Bid Price
1	Test Material 01	10	each	1	1,000.00	10.00	1	660.00	6,600.00	660.00	650.00	
2	Test Material 02	12	each	1	1,000.00	10.00	1	660.00	7,920.00	660.00	650.00	
3	Test Material 03	15	each	1	1,500.00	10.00	1	870.00	13,050.00	870.00	860.00	
4	Test Material 04	20	each	1	2,000.00	10.00	1	872.00	17,440.00	872.00	862.00	

Total Value of My Bids 45,010.00

Total Bid Value:

Submit



3. Click the **Submit** button. The submit button may be submitted after each line item price is entered or after you enter the price for all line items you wish to bid on.

Live Auction Cockpit

Name: 1130-18-R-RFQF-00025

Number: 3300000120 Currency: USD

Rule Profile: Reverse auction with broken lot, full quantity, anonymous bidding

Description:

Requester: 1130_SRMBOS1

Start Date: 10/16/2017 10:06:00 AM CDT

End Date: 10/19/2017 9:59:00 AM CDT

Time Remaining: 00:00:00 (Ended)

Item	Description	Quantity	Unit	Price Unit	Start Price	Decrement	Rank	My Bid	My Bid Value	Best Bid	Next Valid Bid	Bid Price
1	Test Material 01	10	each	1	1,000.00	10.00	1	660.00	6,600.00	660.00	650.00	
2	Test Material 02	12	each	1	1,000.00	10.00	1	660.00	7,920.00	660.00	650.00	
3	Test Material 03	15	each	1	1,500.00	10.00	1	870.00	13,050.00	870.00	860.00	
4	Test Material 04	20	each	1	2,000.00	10.00	1	872.00	17,440.00	872.00	862.00	

Total Value of My Bids 45,010.00
Total Bid Value:
Submit

4. A confirmation pop-up window will be displayed. The bid value (by line item) will be display the total of the Unit Price times the Quantity for that item. If the bid amount(s) are correct, click **Yes**. If the bid amount(s) are incorrect, click **No** and repeat the steps above to enter the correct bid amounts.

Live Auction Cockpit

? You are about to submit a total bid value of 10,000.00 USD for the following items:

Item 4: 10,000.00 USD

This operation cannot be undone. Do you want to continue?

Yes
No

- 5.) A confirmation of a successful bid submission will be displayed in the Chat Window.

Note: Erroneous bids may be deleted by the agency during the live auction.

Chat and System Messages

06/07/2017 10:27:40 AM CDT [System]: Your bid for line item 1 has been successfully submitted
 06/07/2017 10:27:40 AM CDT [System]: Your bid for line item 2 has been successfully submitted
 06/07/2017 10:27:40 AM CDT [System]: Your bid for line item 3 has been successfully submitted

- 6.) Repeat steps 1 – 5 for each desired line item.



Chat and System Messages

The Chat and System Messages area is used for viewing chat messages from an agency buyer and information messages automatically generated by MAGIC.

Below are helpful hints in using the chat feature:

A bidder CAN:	Send a message to an agency buyer. Type the message in the message box and click Send .
	See broadcast messages from the agency buyer to ALL bidders.
	See messages regarding the status of the auction (e.g. paused, resumed, or extended)
A bidder CANNOT:	Send a message to other bidders of the auction.
	See messages sent to an agency by other bidders.
	See messages sent to other bidders from the agency buyer.

Chat and System Messages

Participating Bidders 5

Purchaser Status Offline

☒ Display Time Stamp

All Messages ▾

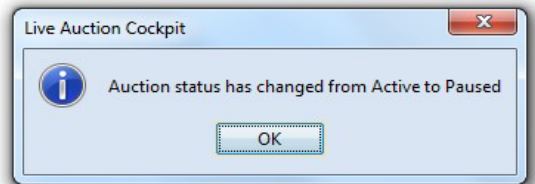
Please send me.....

Send



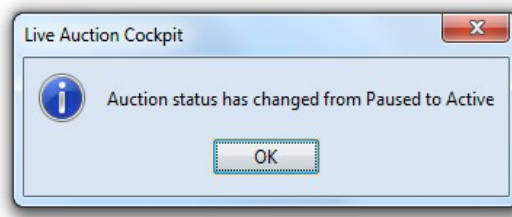
Pausing and/or Resuming an Auction

If necessary, the agency buyer can pause the Live Auction bidding. In such cases, the auction status will be changed from “Active” to “Paused”. A system alert will appear on the screen.

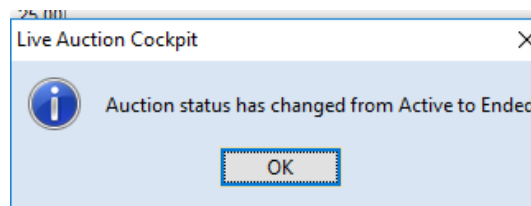


The countdown clock will not stop running while the auction is paused. The time remaining and end date / time are not affected or extended automatically.

When the agency buyer resumes the auction the auction status will be changed from “Paused” to “Active”. A system alert will appear on the screen.



Once the auction has ended, a notification will display.



SECTION III SPECIFICATIONS

1. Bidders must furnish all information requested in the bid specifications. Further, when required, each bidder must submit for bid evaluation cuts, sketches, descriptive literature and technical specifications covering the product offered. Reference to literature submitted with a previous bid or on file with MDWFP will not satisfy this provision.
2. The specifications set forth herein as “**Section III**” represent a minimum of required equipment and operational needs of the Mississippi Department of Wildlife, Fisheries, and Parks. The bidder may propose options above and beyond these specifications that best suit MDWFP’s interests as determined by the agency.
3. The bidder agrees to begin delivery within **30 days** of award. Failure to do so may result in cancellation of award. If cancellation of award occurs, new award will be made to the next lowest bidder meeting required specifications.
4. Respond “Yes” or “No” to indicate compliance to the specifications for each listed criterion and add comments as needed. Submit completed specifications checklist with bid package.

COMPACT TRACK LOADERS

BID SPECIFICATION FOR 299D3 XE OR EQUIVALENT

Compliance

BASIC SPECIFICATIONS

- Y___ N___ Net power using SAE 1349 shall be at least 106 hp (79 kW).
- Y___ N___ Gross power using SAE J1995 shall be at least 110 hp (82 kW).
- Y___ N___ Operating weight shall be 12764 lb (5790 kg).
- Y___ N___ Machine shall have a maximum length of 154.7 in (3931 mm) with bucket on ground and 125.5 in (3189 mm) without bucket on ground.
- Y___ N___ Machine width shall be 76.0 in (1931 mm) when equipped with 15.7 in (400 mm) wide tracks.
- Y___ N___ Machine width shall be 78.0 in (1981 mm) when equipped with 17.7 in (450 mm) wide tracks.
- Y___ N___ Machine height at the top of the cab shall be 83.6 in (2125 mm).

ENGINE

- Y___ N___ Engine shall be a 3.8L, Turbo Diesel Engine, meeting Tier4 Final (Stage IV) Emissions Standards
- Y___ N___ The engine emissions solution shall incorporate the latest Tier 4 Final emissions technology which captures particulate matter by utilizing a wall flow filter design.
- Y___ N___ Engine shall be direct fuel injected, turbocharged, liquid cooled and shall have four cylinders.
- Y___ N___ Engine shall have a total displacement of not less than 232 in3 (3.8 L).
- Y___ N___ The engine shall be equipped with an alternator that has a charging capacity of at least 100 amperes.
- Y___ N___ Air Inlet heater shall be provided for improved starting in cold weather (not ether starting aid).
- Y___ N___ Air filtration shall be accomplished via a radial seal air cleaner with a secondary backup, as well as a convenient in-cab air flow restriction indicator. The air intake system shall be designed to accept an external pre-cleaner.
- Y___ N___ The machine shall not have any cooling cores or condenser mounted or stacked on top or below the radiator, restricting cooling capability.
- Y___ N___ The engine and hydraulic oil coolers shall have an ambient temperature cooling capacity of 109 degrees F (43 degrees C)
- Y___ N___ The cooling system shall pull air in from the rear of the machine and exhausted through the top of the cooling package, directing it away from the operator and site bystanders.
- Y___ N___ The cooling fan shall not be belt driven, but should be powered by a hydraulic motor that is demand driven (activated by an electrical solenoid) based on climate and heat loads. When fan is active it must maintain constant airflow and fan speed, even under a load that would cause the engine to lug.
- Y___ N___ Reversing Fan must be available to assist in removing material from the rear door intake screen. Must provide both automatic and manual purge modes.
- Y___ N___ The machine shall have an electronic torque management system that automatically destroys the hystat pump to reduce the chance of stalling the engine during lugging.
- Y___ N___ There shall be no more than Two belts driven off the engine.
- Y___ N___ The machine shall have braided, color-coded and numbered wiring harness for easy diagnostics.
- Y___ N___ The machine shall have sealed pin connectors to prevent dirt and moisture infiltration.
- Y___ N___ The machine shall be equipped with a battery that has at least 12 volts and 1000 CCA for cold start capabilities in 32 degrees F (0 degrees C) climate.

- Y ____ N ____ The machine shall be equipped with a Battery Disconnect switch (master switch) which will provide a basic level of machine security and prevent battery drain during periods of inactivity.
- Y ____ N ____ The machine shall be equipped with a water-in-fuel sensor and in cab indicator.
- Y ____ N ____ Exhaust flow and cooling package airflow should be mixed to reduce temperature of exhaust gases leaving the exhaust stack.

POWERTRAIN/TRANSMISSION

- Y ____ N ____ Two hydrostatic axial piston drive pumps shall be splined directly to the engine via a flexible coupling for maximum efficiency, reliability and serviceability and shall power the final drive motors, driving the tracks.
- Y ____ N ____ Hydrostatic drive pumps shall be contained in a mono-block housing for maximum reliability and durability.
- Y ____ N ____ The drive system shall be of an external positive drive with steel on steel contact of tooth and sprocket engagement.
- Y ____ N ____ Electronic hand throttle (dial) shall be provided to allow the operator to match engine speed to a task. The hand throttle shall allow the operator to maintain consistent engine speed when desired. Hand throttle (dial) will have capability to provide 'decel' functionality when hand throttle (dial) is placed in the High Idle position.
- Y ____ N ____ Electronic foot throttle shall be provided to allow the operator to match engine speed to a task. The foot throttle shall allow the operator to vary engine speed and minimize fuel consumption. The machine will have the capability to electronically smooth foot throttle control while operating over rough ground.
- Y ____ N ____ An electronic torque management feature shall allow maximum power to the tracks while minimizing engine stalling.
- Y ____ N ____ Maximum forward and reverse travel speed 1 shall be at least 5.2 mph (8.4 kph).
Maximum forward and reverse travel speed 2 shall be at least 8.4 mph (13.5 kph).
- Y ____ N ____ Must have planetary gear reduction final drive.
- Y ____ N ____ 2 Speed must be standard.

STEERING

- Y ____ N ____ The machine shall be equipped with a single, electrically operated joystick that controls the forward/reverse and steering directions.
- Y ____ N ____ Machine must be equipped with a selectable pattern control changer to operate in either "ISO" Pattern or "H" Pattern.
- Y ____ N ____ Machine shall have an air ride seat with seat mounted / adjustable joystick controls.
- Y ____ N ____ Full turning radius from center/coupler without a bucket shall be no greater than 58.1 in (1476 mm).

BRAKES

- Y ____ N ____ Machine shall have a spring applied, hydraulically released parking brake that shall automatically engage when arm bar is raised, and shall be designed to hold machine static at any point on a 2 to 1 slope.

HYDRAULIC SYSTEMS

- Y ____ N ____ The machine shall be equipped with a single, electrically operated joystick that controls the lift, lower and tilt functions.
- Y ____ N ____ The hydraulic pumps shall be driven directly off the engine for maximum hydraulic performance and reliability-no belts shall be used.
- Y ____ N ____ The Standard pump flow of the machine shall be at least 23 gal/min (86 L/min).
- Y ____ N ____ The Standard pump flow hydraulic pressure of the machine shall be at least 3,335 psi (23,000 kPa).
- Y ____ N ____ The Standard pump flow / hydraulic horsepower of the machine shall be at least 44.0 hp (33.0 kW).

- Y___ N___ Machine shall be equipped with auxiliary hydraulics activated by a thumb switch located on the right joystick.
- Y___ N___ The machine shall be equipped with a hydraulic tank that has an anti-cavitation feature.
- Y___ N___ The machine shall be equipped with a hydraulically driven fan, eliminating maintenance costs and friction losses associated with a belt.
- Y___ N___ The High Flow hydraulics of the machine shall be at least 40 gal/min (150 L/min).
- Y___ N___ The High Flow hydraulic pressure of the machine shall be at least 4,061 psi (28,000 kPa).
- Y___ N___ The High Flow hydraulic horsepower of the machine shall be at least 94 hp (70 kW).
- Y___ N___ The High Flow hydraulic pump flow shall be supplied by a load sensing piston pump.
- Y___ N___ Dual, variable-displacement, axial piston pumps shall be driven off the engine and provide hydraulic flow to the drive motors via a closed loop system.
- Y___ N___ Machine shall be equipped with abrasion resistant Tough Guard hoses and O-ring face seals help assure a leak free system.
- Y___ N___ Standard auxiliary hydraulics to power tools shall be available through screw-to-connect quick connect hydraulic couplings that are rigidly mounted to the loader arm.
- Y___ N___ The drive and implement hydraulic pumps shall be electically actuated and may not be actuated via any mechanical linkages.

AXLES

- Y___ N___ Machine shall have 4 heavy-duty torsion axles to suspend each side of the undercarriage from the machine frame and shall be shock absorbing.

UNDERCARRIAGE

- Y___ N___ The track shall consist of molded rubber with embedded steel bars that span the width of the track.
- Y___ N___ The track shall consist of continuous wound steel cables that provide tensile strength so that the track does not stretch.
- Y___ N___ The undercarriage shall not be directly mounted to the machine frame, but shall instead be suspended via four independent torsion axles in order to minimize machine stresses and maximize traction.
- Y___ N___ The undercarriage shall contain front and rear triple flange steel idlers.
- Y___ N___ Machine shall have a minimum ground clearance of no less than 9.6 in (245 mm).
- Y___ N___ Machine ground pressure shall not exceed 5.9 psi (40.5 kPa) with 400mm wide tracks.
- Y___ N___ Machine ground pressure shall not exceed 5.2 psi (35.8 kPa) with 450mm wide tracks.
- Y___ N___ Overall length of track shall be 89.4 in (2270 mm).
- Y___ N___ Length of track on the ground shall be 69.6 in (1767 mm).
- Y___ N___ Machine weight shall be evenly distributed across the entire width and length of the track via multiple sets of rollers to disperse pressure, and maximize traction and flotation.
- Y___ N___ Undercarriage shall consist of an open design that allows easy cleaning of components.
- Y___ N___ Elevated positive track shall keep drive components away from ground debris.

OPERATOR STATION

- Y___ N___ The machine shall be equipped with deep skid-resistant, self-cleaning steps.
- Y___ N___ The machine shall have no foot controls used to operate loader arm, tilt function or auxiliary hydraulics.
- Y___ N___ The machine shall be equipped with an High Back, Heated, "Air Ride" Suspension Seat with lumbar and recline adjustments.
- Y___ N___ The machine shall have a one-piece sealed & pressurized cab design.
- Y___ N___ The machine shall be equipped with both a hand and a foot throttle.

Y ___ N ___	The machine shall be equipped with adjustable boom / bucket response control, adjustable drive response control as well as travel speed control (creeper).
Y ___ N ___	The machine shall be equipped with a single, electrically operated joystick that controls the lift, lower and tilt functions.
Y ___ N ___	The machine shall have a retractable high visibility seat belt.
Y ___ N ___	The machine shall come standard with an arm bar that when lifted, automatically engages the machine parking brake for added operator comfort and safety.
Y ___ N ___	The machine shall be equipped with ROPS/FOPS protective structures rated to at least (14,771 lb) 6700 kg.
Y ___ N ___	Cab door must be equipped with a 2 quick release handles to remove front door that require no use of tools to remove.
Y ___ N ___	The machine shall have a heater coil rated capacity of at least 23,518 Btu (5930 kcal).
Y ___ N ___	The machine shall have audible warning alarms for engine coolant temperature, engine oil pressure and hydraulic oil temperature.
Y ___ N ___	Machines shall be equipped with a hydraulic lockout mechanism that prevents loader arm movement with door in open position.
Y ___ N ___	Machine shall be equipped with a convex, rearview mirror for superior visibility to the rear and sides of the machine.
Y ___ N ___	Machine shall have removable side windows that require no use of tools to remove for easy cleaning.
Y ___ N ___	Side windows shall have two sliding panes, front and rear, to provide protection from the elements and allow fresh air ventilation.
Y ___ N ___	Machine shall be equipped with 2 adjustable, cab mounted front LED working lights and 2 frame mounted, rear LED working lights.
Y ___ N ___	Machine shall be equipped with a standard USB charging port.
Y ___ N ___	Air conditioning condenser shall not be mounted on any other cooling core(s).
Y ___ N ___	The machine shall have an 5 inch, full color, LCD display that supports a rearview camera.
Y ___ N ___	The machine shall have up to 50 individual security codes where the operator preferences are retained for each code. The master code provides the capability to monitor each individual code/operator for fuel usage, hours of operation, as well as events and diagnostics.
Y ___ N ___	The machine display shall provide on screen adjustment capability for creep setting, ride control activation speed, top speed limit setting, English/Metric units, choice of 6 languages, choice of 4 backgrounds, and choice of 4 gauge styles.
Y ___ N ___	Machine shall have a rear view camera.
Y ___ N ___	The machine shall be equipped with Speed Sensitive Ride Control, which engages and disengages automatically, to cushion the loader arms during carry and travel operation.
Y ___ N ___	Machine shall have cellular based tracking providing machine hours and machine location.
Y ___ N ___	Machine shall have Bluetooth capability and Microphone integrated with an AM/FM/Weather Band Radio with USB and Auxiliary Input Jack.

LOADER LINKAGES / STRUCTURES

Y ___ N ___	Loader linkage shall be of a vertical lift style.
Y ___ N ___	Loader linkage shall be equipped with a split style D-ring for securing work tool auxiliary hoses.
Y ___ N ___	The pins shall have countersunk grease fittings to protect them from damage.
Y ___ N ___	The machine shall be equipped with two tilt cylinders, protected by a heavy-duty torque tube.
Y ___ N ___	The machine shall have a tipping capacity of at least 12400 lb (5635 kg).
Y ___ N ___	Rated operating capacity at 35% tipping load shall be no less than 4340 lb (1975 kg).
Y ___ N ___	Rated operating capacity at 50% tipping load shall be no less than 6200 lb (2820 kg).
Y ___ N ___	The machine will have a dump angle of at least 54° for superior bucket cleanout.

- Y___ N___ The machine shall have an arched transition to the coupler for increased dump clearance.
- Y___ N___ Vertical lift linkage shall provide visibility under the loader arm to left & right sides when bucket is in the carry position.
- Y___ N___ The vertical lift linkage shall provide a consistent and uniform lift path for maximum reach throughout the entire lift cycle.
- Y___ N___ Cantilevered pins in the loader linkage shall be forged and induction hardened, and shall be the same diameter all the way through using a flagged end to secure them to one side, allowing them to rotate in the corresponding bore.
- Y___ N___ The machine shall have a maximum hinge pin height of at least 126.3 in (3208 mm).
- Y___ N___ Reach at maximum lift and dump shall be at least 33.6 in (852 mm).
- Y___ N___ Clearance at maximum lift and dump shall be at least 94.5 in (2399 mm).
- Y___ N___ Rack back angle at maximum height shall be 81 degrees.
- Y___ N___ Maximum reach with arms parallel to the ground shall be 51.9 in (1319 mm).
- Y___ N___ Tilt cylinder breakout force shall be at least 7270 lb (3298 kg).
- Y___ N___ Lift cylinder breakout force shall be at least 6162 lb (2795 kg).
- Y___ N___ Electronic Dual Direction Self Level with electronic lift cycle snubbing shall be standard.
- Y___ N___ Electronic work tool return to dig feature and electronic work tool positioner shall be standard.

WORK TOOL OPTIONS

- Y___ N___ Machine shall have a universal quick coupler interface to easily change work tools.
- Y___ N___ Coupler shall have the following features: a low profile side plate designed for optimum match to work tools and minimal material packing, opposing wedges to ensure a tight tool fit, large contact areas to absorb loads and minimize stress, chrome plated and lubricated vertical pins for smooth engagement and prevention of corrosion.
- Y___ N___ Coupler shall have manual engagement and disengagement of work tools using two high leverage handles.
- Y___ N___ The machine shall have screw-to-connect quick disconnects with manual pressure release for heavy duty applications with work tools

SERVICEABILITY

- Y___ N___ Maintenance points shall be grouped in easily accessible, ground level locations.
- Y___ N___ The machine shall be equipped with grouped filter configuration with fuel/water separator filter and hydraulic oil filter being cartridge style.
- Y___ N___ The engine shall be mounted lengthwise for better accessibility.
- Y___ N___ The radiator and hydraulic oil cooler shall be protected by a guard/grill which shall tilt up to gain access to the cores.
- Y___ N___ The machine shall be equipped with sight gauges on the hydraulic tank and the radiator.
- Y___ N___ The machine shall be equipped with standard system pressure and fluid analysis test ports.
- Y___ N___ The machine shall have an electronic port allowing electronic machine diagnostics.
- Y___ N___ The machine shall have a cab that tilts to the rear by an individual using hand tools and shall expose all pumps, motors, valves and lines. Cab shall be held in place when tilted by a self latching mechanism.
- Y___ N___ The machine shall not have any required daily maintenance points that require lifting of the cab structure.
- Y___ N___ Machine shall have a vented, steel, rear door, with a bumper that slightly protrudes beyond the door, in order to prevent damage to engine compartment components.
- Y___ N___ The rear door shall open to provide for easy access to both sides of the engine without the need for hand tools.

- Y ___ N ___ A removable belly pan section in the floor of the machine's lower frame shall provide excellent access for periodic cleaning
- Y ___ N ___ All filters shall be easily accessible from the ground, which makes routine service quicker and virtually spill free.

MINIMUM SERVICE FILL CAPACITIES

- Y ___ N ___ The machine shall have a hydraulic oil tank capacity of at least 10.3 gal (39 L).
- Y ___ N ___ Hydraulic system shall hold 14.5 gal (55 L).
- Y ___ N ___ Fuel tank shall hold 57.9 gal (122 L).
- Y ___ N ___ Engine crankcase shall hold 3.5 gal (13 L).
- Y ___ N ___ Engine cooling system shall hold 4.1 gal (16 L).
- Y ___ N ___ Diesel Exhaust Fluid system shall hold no less than 5.0 gal (19L)

OWNING AND OPERATING COSTS

- Y ___ N ___ Extended life coolant shall be standard
- Y ___ N ___ The machine shall have recommended 500-hour engine oil change intervals.
- Y ___ N ___ The machine shall be equipped with hydraulic oil that can achieve 6000 hour life with regular oil sampling and recommended filter changes.

REMAINDER OF PAGE INTENTIONALLY LEFT BLANK

TRACK TYPE TRACTORS

BID SPECIFICATION FOR D3 LGP OR EQUIVALENT

Compliance

BASIC SPECIFICATIONS

- Y___ N___ This machine shall be a currently advertised standard product track-type tractor.
- Y___ N___ Basic operating weight of standard LGP shall not be less than 21,369 lb (9693 kg); including lubricants, coolant, ROPS cab, 100% fuel, operator, VPAT bulldozer, track end guiding guards and 26 in (660 mm) shoes.
- Y___ N___ The overall length of the LGP tractor shall not exceed 169.6 in (4,309 mm) when equipped with a VPAT blade.
- Y___ N___ The overall width of the LGP tractor when equipped with a VPAT blade shall not exceed 116 in (2,946 mm) with the blade, angled 25 degrees.
- Y___ N___ Ground clearance per SAE J1234 shall be at least 13 in (332 mm) when measured from the face of the track shoe for the LGP tractor.

ENGINE

- Y___ N___ The engine shall be manufactured by the tractor manufacturer.
- Y___ N___ The engine shall be a four-cycle, 4 cylinders, turbo charged.
- Y___ N___ The engine, including engine cooling fan, and all necessary accessories, shall deliver at least 104 hp (77.6 kW) at the flywheel (SAE rated).
- Y___ N___ Standard equipment shall include turbocharger, air cleaner, water pump, fuel pump, muffler, lubricating oil pump and air to air aftercooler.
- Y___ N___ A hydrostatic power train system shall be provided and shall include two high pressure, variable displacement piston pumps attached directly to the engine flywheel housing.
- Y___ N___ Hydrostatic (dynamic) braking through the machine drive system shall be provided using joystick control.
- Y___ N___ Cooling fan shall be of blower-type.
- Y___ N___ Engine shall be equipped with a precleaner with primary and secondary air filters.
- Y___ N___ An electric fuel-priming pump shall be standard.
- Y___ N___ The tractor shall be equipped with a certified US EPA Tier 4/EU Stage V exhaust emissions engine which require no additional fluid beyond Ultra Low Sulfur Diesel fuel.
- Y___ N___ The engine shall be equipped with a common rail high pressure injection system.
- Y___ N___ Engine displacement shall be at least 220 in3 (3.6 L).
- Y___ N___ Net power shall be rated at 2200 rpm.
- Y___ N___ Machine shall be equipped with 12-volt electrical starting and operating system.
- Y___ N___ The cooling system, including the hydraulic oil cooler, engine radiator shall be located toward the front of the tractor.
- Y___ N___ Engine shall feature five main bearings, providing a large bearing surface area.
- Y___ N___ Standard, single piece aluminum alloy pistons will be included.
- Y___ N___ Battery capacity shall be 1000 CCA, 12 volts, with two batteries.
- Y___ N___ The alternator shall be 150 amps, heavy-duty brushless.
- Y___ N___ The engine shall provide fwhp to a minimum of 9,843 ft (3,000 m) before altitude deration.
- Y___ N___ Engine air filter shall have a service indicator on the instrument panel.

POWERTRAIN/TRANSMISSION

- Y___ N___ The tractor shall be equipped with a hydrostatic drive system.
- Y___ N___ The hydrostatic drive shall provide completely independent adjustments of speed in forward and reverse.
- Y___ N___ The transmission speed shall be controlled by use of a thumb roller mounted on an ergonomically-designed joystick.
- Y___ N___ Hydrostatic drive shall provide infinite speed selection from 0 to 5.6 mph (0 to 9 km/h) in forward and 0 to 6.2 mph (0 to 10 km/h) in reverse.
- Y___ N___ Hydrostatic drive shall be standard, eliminating transmission shifting.
- Y___ N___ Machine shall have electronic hydrostatic control (EHC) standard.
- Y___ N___ The drive system shall provide independent power to each track for controlled power turns.
- Y___ N___ Counter rotation shall be a standard functionality of the machine.
- Y___ N___ Parking brakes shall be of spring applied and hydraulically released design.
- Y___ N___ Variable displacement pumps and drive motors shall be standard.
- Y___ N___ Transmission and steering shall be controlled with an ergonomically designed joystick located to the left of the operator.

HYDRAULICS

- Y___ N___ Blade control shall have a single, low effort lever with electro-hydraulic control for lift, tilt, and angle functions.
- Y___ N___ Pump output at rated engine speed shall be at least 17.2 gpm (65 L/min).
- Y___ N___ Implement Hydraulic pump shall be separate.

UNDERCARRIAGE

- Y___ N___ The undercarriage shall be designed and manufactured by the tractor manufacturer.
- Y___ N___ The undercarriage shall have reinforced track roller frames with seven internal bulkheads to better resist bending and torsional loads.
- Y___ N___ The undercarriages shall have lifetime lubricated track, carrier roller, track rollers and idlers.
- Y___ N___ The undercarriage shall have seven track rollers per side.
- Y___ N___ The undercarriages shall have hydraulic track adjustment by grease gun fully sealed with relief valve.
- Y___ N___ The tractor shall include Long-life sprocket rings or segments retained with nuts and bolts to facilitate easy replacement even if a bolt should break off in the sprocket hub.
- Y___ N___ Track link assemblies shall include factory-sealed cartridges which rotate and are filled with lubricating oils.
- Y___ N___ Idler design should not cause wear to link assemblies.
- Y___ N___ Full-length recoil guards shall be provided to prevent recycling of material through the undercarriage system.
- Y___ N___ The machine shall have a device which can reduce track slip in poor underfoot conditions which can be activated from operator's seat.
- Y___ N___ Track links shall include struts for added strength.
- Y___ N___ Each track shall have a minimum of one carrier roller.
- Y___ N___ LGP standard machine shall have a minimum 69 in (1,750 mm) gauge.
- Y___ N___ LGP standard machine shall have minimum 26 in (660 mm) shoes standard.
- Y___ N___ LGP standard machine shall have a minimum 91 in (2,310 mm) length of track on ground.

- Y___ N___ LGP standard machine shall have a minimum 4,726in² (30,492 cm²) ground contact area with standard shoes.
- Y___ N___ LGP standard machine shall have maximum ground pressure of 4.5 psi (31.2 kPa) when equipped with standard shoes, VPAT dozer, ROPS cab, fuel and lubricants.

FINAL DRIVES

- Y___ N___ Final drives shall be double reduction, planetary design.
- Y___ N___ Final drives shall be isolated from ground-induced shock loads.

OPERATORS STATION

- Y___ N___ ROPS cab shall meet ROPS criteria SAE J1040 MAY94, SAE J397 OCT95, ISO 3471: 1994, and ISO 3164: 1995.
- Y___ N___ The tractor shall have both left and right operator doors.
- Y___ N___ The cab shall have fresh air pressurization with replaceable filter.
- Y___ N___ The cab shall have front and rear windshield wipers and washer.
- Y___ N___ The cab shall have a standard rear-view mirror.
- Y___ N___ The tractor shall have a standard electrical horn.
- Y___ N___ An air conditioner, heater, and air circulation system shall be standard equipment in all cabs; both the air conditioning and the heater shall deliver filtered, pressurized, temperature-controlled air to the operator; air circulation system shall have multiple outlets, including outlets in the dashboard.
- Y___ N___ Canopy equipped tractors shall have a heater with outlets in the dashboard for optimal comfort in cold weather.
- Y___ N___ The standard air-suspension seat shall be fully adjustable for maximum operator comfort and control without tools; an orange retractable, at least 3 in (75mm) wide seat belt shall be standard.
- Y___ N___ The right hand and left hand side consoles shall each feature an adjustable armrest, wrist rest and joystick mount without tools.
- Y___ N___ Left and right lever controls shall be seat mounted and adjustable along with the wrist pads.
- Y___ N___ The monitoring system shall be located in front of the operator.
- Y___ N___ The monitoring system shall be electronic with real-time, visual feedback on engine and machine operating conditions.
- Y___ N___ The cab shall feature a computerized system to monitor important machine systems and alert the operator when potential problems occur.
- Y___ N___ Cab shall increase visibility through hexagonal design, angled doors, and tinted windows.
- Y___ N___ Back up alarm shall be standard.
- Y___ N___ Cab shall include a 12-volt power port.
- Y___ N___ Cab shall also include a dome light and cup holder for operator convenience.
- Y___ N___ A decelerator pedal shall allow the operator to modulate ground speed and apply brake.
- Y___ N___ The machine shall have four front and two rear LED work lights.
- Y___ N___ Operator sound exposure level shall not be greater than 78 dB(A) ANSI/SAE J1166 OCT 98.
- Y___ N___ The standard machine shall be "radio ready" including 12-volt power supply, speakers and wiring.

DOZER BLADE

- Y___ N___ Blade lift, angle and tilt shall be hydraulically adjustable from the operator station.

- Y___ N___ The blade shall be controlled with an ergonomically designed joystick located to the right of the operator. Blade angle shall be controlled using an ergonomically positioned thumb roller.
- Y___ N___ Blade pitch shall be infinitely adjustable from 52 degrees to 58 degrees.
- Y___ N___ The machine shall have a device which allows the blade pitch to be adjusted “on the go” from the operator’s seat.
- Y___ N___ Blade shall have a minimum 25 degree angle right or left.
- Y___ N___ Mainframe shall be of a one-piece design for increased reliability and durability.
- Y___ N___ The blade shall be a full width, four box-section construction.
- Y___ N___ All bulldozer pivot points shall be equipped with greasable zerk fittings.
- Y___ N___ Cutting edge shall have not less than four sections.
- Y___ N___ LGP VPAT blade shall be a maximum 126.7 in (3,220 mm) wide.
- Y___ N___ LGP VPAT blade shall be a minimum 39.8 in (1,010 mm) high.
- Y___ N___ LGP VPAT blade shall have a minimum 17.6 in (448 mm) tilt.
- Y___ N___ LGP VPAT blade shall have a minimum 30.2 in (767 mm) lift above ground.
- Y___ N___ LGP VPAT blade shall have a minimum 22.5 in (572 mm) drop below ground.
- Y___ N___ LGP VPAT shall have a minimum dozer capacity of 3.06 yd3 (2.34 m3) per SAE J729.

WORK TOOL OPTIONS

- Y___ N___ Parallelogram multi-shank ripper shall be available.
- Y___ N___ Winch full drum line pull shall be not less than 25,000 lb (11,340 kg).
- Y___ N___ Hydrostatic winch, driven by its own closed-loop hydrostatic system, shall be available.

SERVICEABILITY

- Y___ N___ Engine oil change interval shall be no less than 500 hours or three months.
- Y___ N___ Engine oil filter change interval shall be no less than 500 hours or three months.
- Y___ N___ A diagnostic test bank shall be included for ease of service.
- Y___ N___ Hydraulic oil change interval shall be no less than 3,000 hours or three years.
- Y___ N___ Hydraulic oil filter replacement interval can be no less than 2,500 hours
- Y___ N___ The machine shall include SOS fluid taps.
- Y___ N___ Daily service points, shall be accessible from ground level.
- Y___ N___ Quick disconnect hydraulic pressure taps shall be provided to allow rapid in-field diagnosis of malfunctions in implement or drive hydraulic systems.
- Y___ N___ Hinged service doors shall be offered.
- Y___ N___ The engine shall not require any valve lash adjustment.

MINIMUM SERVICE FILL CAPACITIES

- Y___ N___ Fuel tank capacity shall not be less than 51.5 gal (195 L).
- Y___ N___ Cooling system capacity shall not be less than 5 (19 L).
- Y___ N___ Each final drive shall have a capacity of not less than 2.6 gal (10 L).
- Y___ N___ Hydraulic tank capacity shall not be less than 23.8 gal (90 L).

ADDITIONAL FEATURES

Y___ N___ Machine shall have an option of a system that will communicate location and hours of operation.

Y___ N___ A machine security system shall be available to use electronically coded keys to limit usage by individual or time parameters.

REMAINDER OF PAGE INTENTIONALLY LEFT BLANK

MHE HYDRAULIC EXCAVATORS

BID SPECIFICATION for - 308 or EQUIVALENT

Compliance

BASIC SPECIFICATIONS

Y___ N___	Net horsepower at 2200 rpm shall be at least 70.3hp (52.4kW) according to ISO 9249
Y___ N___	SAE rated gross horsepower at 2200 rpm shall be at least 74.3 hp (55.4 kW) according to ISO 14396
Y___ N___	The machine must be CR (Compact Radius) with a maximum of 12" of overhang over the side of the tracks in the standard configuration
Y___ N___	Operating weight with the cab option shall be at least 20,678 lb (9380 kg)
Y___ N___	Lift capacity without bucket fitted, blade down, and std stick shall be no less than 7376 lb (3345 kg) at 14'8" (4.5 m) over the front and no less than 3627 lb (1645 kg) at 14'8" (4.5 m) over the side.
Y___ N___	Maximum digging depth with a long stick shall be at least 15'2" (4644 mm)
Y___ N___	Maximum digging height with a long stick shall be at least 23'1" (7038 mm)
Y___ N___	Maximum dump clearance shall be at least 16'6" (5071 mm) with a long stick
Y___ N___	Maximum reach with a long stick shall be at least 25'1" (7637 mm)
Y___ N___	Height to top of cab shall be 8'3" (2540 mm)
Y___ N___	Ground clearance shall be not less than 14" (349 mm).
Y___ N___	Transport width shall be 7' 5" (2300 mm) with 18" (450 mm) tracks
Y___ N___	Maximum vertical wall shall be no less than 11'2" (3405mm) with a long stick
Y___ N___	Manufacturer must offer an optional counterweight on the back of the machine for additional stability in extreme applications

ENGINE

Y___ N___	Engine shall be US EPA Tier 4 Final compliant
Y___ N___	Machine shall be a Turbo Charged, Water-cooled, 4 stroke, 4 cylinder diesel engine.
Y___ N___	Engine bore shall be 3.7" (94 mm) and stroke shall be 4.7" (120 mm)
Y___ N___	Engine displacement shall not be less than 203.2 cubic inches (3.33L).
Y___ N___	Engine shall have automatic engine idle that automatically lowers engine revolutions when machine is not in use to save fuel
Y___ N___	Machine shall maintain full engine power up to 8,200' (2,500 m) above sea level.
Y___ N___	Electrical system voltage shall be 12 volt
Y___ N___	Machine shall have a 900 CCA maintenance free battery
Y___ N___	Alternator shall not be rated at less than 60 amps.
Y___ N___	The machine's electrical system shall incorporate a resettable 'circuit breaker' switch.
Y___ N___	All wire harnesses shall be encased in nylon mesh bindings.
Y___ N___	Machine shall have sealed electrical connectors
Y___ N___	All wiring shall utilize color coded wires.
Y___ N___	The cooling system fan shall incorporate a guard.
Y___ N___	Water separator in fuel line shall be factory installed standard equipment.
Y___ N___	A factory installed high-ambient temperature cooling package capable of working conditions up to 126° F (52° C) shall be standard.
Y___ N___	The air cleaner shall incorporate both primary and safety elements.
Y___ N___	Machine shall have adjustable automatic engine shutdown
Y___ N___	Machine shall have automatic swing break

Y ___ N ___ Machine shall be equipped with battery disconnect standard
 Y ___ N ___ Engine shall be equipped with a standard ecology drain

POWERTRAIN/TRANSMISSION

Y ___ N ___ Travel speed shall be at least 1.9 mph (3.1 km/h) in low and 3.2 mph (5.1 km/h) in high
 Y ___ N ___ Traction force shall be at least 15,175 lbf (67.5 kN) in low and 6,250 lbf (27.8 kN) in high
 Y ___ N ___ Factory installed, standard auto two speed which provides better fuel efficiency since the machine will automatically go into higher power/torque only when the system senses that it is required while dozing, counter rotating, and uphill travel.

HYDRAULIC SYSTEM

Y ___ N ___ **Machine shall have one variable displacement piston pump with an output of 44 gal/m (167 L/m) at 2400 rpm**
 Y ___ N ___ Equipment operating pressure shall be at least 4,134 psi (285 bar).
 Y ___ N ___ Travel operating pressure shall be at least 4,134 psi (285 bar).
 Y ___ N ___ Operating swing pressure shall be at least 3,626 psi (250 bar).
 Y ___ N ___ Primary circuit shall have an output of at least 35 gal/min (131 LPM)
 Y ___ N ___ Secondary circuit shall have an output of at least 9 gal/min (33 LPM)
 Y ___ N ___ An accumulator shall be provided to allow the boom and stick to be lowered to the ground in the case of a dead engine. Also to allow depressurization of hydraulic system in order to attach work tools.
 Y ___ N ___ All fittings shall be of the O Ring Face Seal type for superior sealing against leaks.
 Y ___ N ___ The boom cylinder circuit shall come standard with zero leak boom section valve for zero boom drift
 Y ___ N ___ Factory installed combined function (one-way/two-way) auxiliary high pressure hydraulic circuit shall be standard.
 Y ___ N ___ Factory installed hydraulics to operate a hydraulic quick coupler shall be available.
 Y ___ N ___ The bucket service shall have a relief valve fitted to protect the cylinder against shock loading.
 Y ___ N ___ **Machine shall come standard with a trim feature that can be adjusted. This allows to correct machine travel if there is abnormal wear of tracks or other components.**
 Y ___ N ___ **The machines travel and throttle functions shall be electro over hydraulic controlled to maintain modulation throughout the machines life.**
 Y ___ N ___ End damping on both Boom and Stick cylinders shall help avoid spoil loss when loading at height and reduce shock loading in the machines structures.
 Y ___ N ___ **Machine shall have a load sensing, flow sharing, variable margin displacement piston pump system**
 Y ___ N ___ Auxiliary hydraulic valve shall be standard with standard hydraulic quick disconnects on the stick
 Y ___ N ___ **Machine is shall be equipped with smart tech electronic pump that monitors Hydraulic flows, pressure, temperature and ambient temperature to keep machine operating at maximum efficiency**

UNDERCARRIAGE

Y ___ N ___ Track length shall be 9' 4" (2880 mm)
 Y ___ N ___ Machine shall have 18" (450 mm) triple grouser shoes with additional holes that allow mounting of rubber street pads.
 Y ___ N ___ Track shoe width shall be 18" (450 mm) Available in either Rubber Belt, Steel Track or Steel Track with Rubber Pads
 Y ___ N ___ Factory installed 24" (600 mm) triple grouser track shall be available.

- Y___ N___ An idler guard shall be provided to maintain track alignment while traveling or working on slopes.
- Y___ N___ Ground pressure with 24" (600 mm) rubber tracks shall be no more than 5 psi (36.3 kPa)
- Y___ N___ Machine shall come standard with hydraulic track adjusters
- Y___ N___ Machine shall come standard with tie down eyes on track frame

OPERATORS STATION

- Y___ N___ **A color LCD monitor system which includes...As standard - Fuel level and coolant temperature gauges, maintenance and machine monitoring, performance and machine adjustments, numeric security code, multiple languages, camera ready, hour meter with wake up switch, and iog dial control with interface.**
- Y___ N___ **The cab shall be sealed and pressurized to maximize operator comfort.**
- Y___ N___ **Next Generation Stick Steer comes standard.**
- Y___ N___ **Travel cruise control when in Stick Steer mode shall be standard.**
- Y___ N___ **An integrated rear camera shall be available from the factory.**
- Y___ N___ Continuous flow must be able to be activated with flow in either direction and at any flow rate
- Y___ N___ Machine must have adjustable auxiliary flow control for better controllability of attachments
- Y___ N___ Pump flow shall decrease (auto-idle) when controls are in neutral for reduced fuel consumption and sound.
- Y___ N___ **Machine must be equipped with a standard power on demand offering over 10% fuel savings**
- Y___ N___ **A pattern control changer between ISO and SAE shall be standard within LCD Monitor.**
- Y___ N___ Proportional auxiliary control and proportional boom swing control shall be on the joystick
- Y___ N___ Joystick mounted controls give fine control at the operators finger tips and eliminate foot pedals from the floor which gives greater operator legroom.
- Y___ N___ The throttle shall be easily adjustable by means of a dial.
- Y___ N___ All controls shall be isolated when the control consoles are raised for entrance or exit of the operator station.
- Y___ N___ The machine shall not be able to start when any of the controls are 'live'.
- Y___ N___ The upper body swing lock shall be automatically applied upon travel or lowering the arm bar.
- Y___ N___ Operator's manual for the machine shall be permanently attached to the machine and stored in a lockable container.
- Y___ N___ Machine shall have the windshield wiper mounted in such a way that the wires do not have to be disconnected.
- Y___ N___ The rear window shall be able to be removed for escape in case of emergency.
- Y___ N___ Lower front window shall be able to be removed and secured within the cab.
- Y___ N___ The cab door will be a hinged door design. The door has a mechanism that will lock the door in the open position.
- Y___ N___ The cab shall have a polycarbonate skylight for visibility when loading at height.
- Y___ N___ Travel pedals shall be available and removable for ease of operation.
- Y___ N___ A four-way adjustable air suspension seat as standard
- Y___ N___ Operator sound pressure level shall be 72 dB(A) for cab when measured per ISO 6396 (dynamic)
- Y___ N___ Travel alarm shall be standard
- Y___ N___ **HVAC shall be standard with automatic temperature control with sealed and pressurized cab**

Y ___ N ___	Heat and Air conditioning shall be standard with variable temperature control settings with sealed and pressurized cab
Y ___ N ___	Heater shall have variable heat settings with sealed and pressurized cab
Y ___ N ___	Machine shall have multi function capability of boom swing and upper body swing for extra machine versatility in tight areas
Y ___ N ___	Air conditioning shall be standard on cab units with sealed and pressurized cab
Y ___ N ___	Boom swing and upper body swing shall be able to be operated at the same time to maximize machine versatility and productivity.
Y ___ N ___	Cab air conditioner shall have a primary filter that can be removed for inspection without any tools.
Y ___ N ___	Factory installed AM/FM stereo radio shall be standard includes use of Bluetooth®, USB, auxiliary, and microphone devices.
Y ___ N ___	Machine shall have a 3" (76 mm) wide florescent retractable seat belt as standard.
Y ___ N ___	Customizable operator settings including speed and response of boom, bucket and stick to adjust per operator preference.
Y ___ N ___	Cab shall have a beverage holder capable of holding a standard 12 oz (340 g) soft drink can.
Y ___ N ___	A 12 volt, 5 amp power supply with a cigar lighter type outlet shall be available for use of cell phones and two-way radios.
Y ___ N ___	Machine shall have adjustable armrests that can be adjusted with out tools
Y ___ N ___	Customizable security system shall come standard.
Y ___ N ___	Adjustable courtesy lighting shall come standard.
Y ___ N ___	Machine shall come standard with removable washable floor mat with molded foot rests
Y ___ N ___	Machine shall come standard with coat hook
Y ___ N ___	Machine shall have optional rain visor from factory

BOOM AND STICK

Y ___ N ___	The ability to order the machine with standard or long stick option shall be available.
Y ___ N ___	Machine shall come standard with a swing boom
Y ___ N ___	Machine equipped with a variable angle boom will be available from factory
Y ___ N ___	Digging force with a standard stick shall be at least 9,509 lb (42.3 kN)
Y ___ N ___	Digging force with a long stick shall be at least 8,032 lb (35.7 kN)
Y ___ N ___	Bucket digging force shall be at least 13,946 lb (62.0 kN)
Y ___ N ___	Bucket rotation angle shall be 180 degrees
Y ___ N ___	This stick will be fitted with a dedicated 8818 lb (4000 kg), rated lifting eye for safe craning
Y ___ N ___	A dual lock coupler shall be standard on mechanical or hydraulic quick couplers for added safety.
Y ___ N ___	Machine shall come thumb ready from factory
Y ___ N ___	Machine shall have one piece boom 133.9" (3400 mm)

BLADE

Y ___ N ___	Blade width shall be a minimum of 91" (2300 mm) for std track machines, and 97" (2450 mm) for wide track machines
Y ___ N ___	Blade on standard track machines shall have blade extensions available from the factory
Y ___ N ___	Blade height shall be at least 17" (431 mm)
Y ___ N ___	Blade dig depth shall be at least 16" (408mm)
Y ___ N ___	Blade lift height shall be at least 15" (369 mm)
Y ___ N ___	Dozer float shall be standard to give easy and fast site clear up and leveling.

Y ___ N ___

Blade shall come standard with bolt-on reversible wear edge

SWING SYSTEM

Y ___ N ___

Swing speed shall be 10 rpm

Y ___ N ___

Left swing without stop shall be at least 80 degrees

Y ___ N ___

Left swing with stop shall be at least 60 degrees

Y ___ N ___

Right swing shall be at least 50 degrees

Y ___ N ___

Machine shall have a spring applied, hydraulic release automatic swing break

WORK TOOL OPTIONS

Y ___ N ___

A quick coupler system shall be available (mechanical and hydraulic), which will pick up the 'direct mounted' work tools.

Y ___ N ___

The hydraulic quick coupler option shall have the lines available to be installed from the factory.

Y ___ N ___

Coupler must offer the option to turn the bucket around in front shovel positioning providing the advantage of digging under obstacles.

SERVICEABILITY

Y ___ N ___

All daily maintenance areas shall be situated where they can be easily reached from ground level

Y ___ N ___

Fuse box shall be open able without tools.

Y ___ N ___

Track rollers and carrier rollers shall be lifetime lubricated for increased service life.

Y ___ N ___

Grease lubricated track shall be provided as standard equipment for increased service life.

Y ___ N ___

Track shall have a split-pin type master pin that makes track attachment and removal easier.

Y ___ N ___

Scheduled oil sampling port for the main hydraulic system shall be provided for hydraulic oil to simplify sampling.

Y ___ N ___

An engine coolant sampling port shall be provided to allow engine coolant to be tested for antifreeze and additive strengths.

Y ___ N ___

Radial seal air filter with double layered filter core shall be provided for better filtration.

Y ___ N ___

One maintenance-free battery shall be provided.

Y ___ N ___

Hydraulic system pressure taps shall be included for quick, easy, efficient, system diagnostics.

Y ___ N ___

The engine fan guard shall fully enclose (360°) the engine fan.

Y ___ N ___

An electronic priming fuel pump shall be standard.

Y ___ N ___

Machine shall come standard with an onboard remote monitoring and management system (Product Link) that supplies data including but not limited to hours of use, idle time, fuel consumption, load factors, GPS coordinates of location, and allow remote diagnostics and maintenance reviews to be performed.

MINIMUM SERVICE FILL CAPACITIES

Y ___ N ___

Fuel tank capacity shall not be less than 39 gal (147 L)

Y ___ N ___

Cooling system shall not hold less than 2.6 gal (10 L)

Y ___ N ___

Engine oil shall not hold less than 3.0 gal (11.2 L)

Y ___ N ___

Each final drive shall have a capacity of 0.26 gal (1L)

Y ___ N ___

Hydraulic tank shall not hold less than 14 gal (53 L) of hydraulic oil.

Y ___ N ___

Hydraulic system shall not hold less than 27 gal (104 L).

OWNING AND OPERATING COSTS

- Y___ N___ Factory-fill extended life coolant with a minimum life of 6,000 hours or three years, rated to -35° F (-37° C), shall be standard. Factory fill extended life coolant with a minimum life of 6,000 hours or three years, rated to -58° F (-50° C) shall be optional.
- Y___ N___ **Engine oil and filter shall have a recommended change interval of 500 hours**
- Y___ N___ **Hydraulic system oil shall have a recommended change interval of 6000 hours**

ADDITIONAL FEATURES

- Y___ N___ Factory installed extra counterweight optional
- Y___ N___ Counterweight shall have threaded lifting eyes.
- Y___ N___ A factory installed swivel guard shall be available
- Y___ N___ An integrated rear camera shall be available from the factory.
- Y___ N___ **Push to Start shall be an option with Bluetooth® key or operator code options available.**
- Y___ N___ **An advanced touch screen monitor shall be available.**
- Y___ N___ Boom and stick hose burst check valves shall be available from factory
- Y___ N___ Water jacket heater shall be available from factory
- Y___ N___ Refueling pump shall be available from factory
- Y___ N___ 2nd auxiliary hydraulic lines with case drain shall be available from factory
- Y___ N___ Air suspension heated seat shall be available from factory
- Y___ N___ A rotating beacon shall be available from factory
- Y___ N___ Cab guarding shall be available from factory
- Y___ N___ Computer based operator training shall be available from the manufacturer in both English and Spanish

REMAINDER OF PAGE INTENTIONALLY LEFT BLANK

TRACK TYPE TRACTORS

BID SPECIFICATION FOR D3 LGP OR EQUIVALENT

Compliance

BASIC SPECIFICATIONS

- Y___ N___ This machine shall be a currently advertised standard product track-type tractor.
- Y___ N___ Basic operating weight of standard LGP shall not be less than 21,369 lb (9693 kg); including lubricants, coolant, ROPS cab, 100% fuel, operator, VPAT bulldozer, track end guiding guards and 26 in (660 mm) shoes.
- Y___ N___ The overall length of the LGP tractor shall not exceed 169.6 in (4,309 mm) when equipped with a VPAT blade.
- Y___ N___ The overall width of the LGP tractor when equipped with a VPAT blade shall not exceed 116 in (2,946 mm) with the blade, angled 25 degrees.
- Y___ N___ Ground clearance per SAE J1234 shall be at least 13 in (332 mm) when measured from the face of the track shoe for the LGP tractor.

ENGINE

- Y___ N___ The engine shall be manufactured by the tractor manufacturer.
- Y___ N___ The engine shall be a four-cycle, 4 cylinders, turbo charged.
- Y___ N___ The engine, including engine cooling fan, and all necessary accessories, shall deliver at least 104 hp (77.6 kW) at the flywheel (SAE rated).
- Y___ N___ Standard equipment shall include turbocharger, air cleaner, water pump, fuel pump, muffler, lubricating oil pump and air to air aftercooler.
- Y___ N___ A hydrostatic power train system shall be provided and shall include two high pressure, variable displacement piston pumps attached directly to the engine flywheel housing.
- Y___ N___ Hydrostatic (dynamic) braking through the machine drive system shall be provided using joystick control.
- Y___ N___ Cooling fan shall be of blower-type.
- Y___ N___ Engine shall be equipped with a precleaner with primary and secondary air filters.
- Y___ N___ An electric fuel-priming pump shall be standard.
- Y___ N___ The tractor shall be equipped with a certified US EPA Tier 4/EU Stage V exhaust emissions engine which require no additional fluid beyond Ultra Low Sulfur Diesel fuel.
- Y___ N___ The engine shall be equipped with a common rail high pressure injection system.
- Y___ N___ Engine displacement shall be at least 220 in3 (3.6 L).
- Y___ N___ Net power shall be rated at 2200 rpm.
- Y___ N___ Machine shall be equipped with 12-volt electrical starting and operating system.
- Y___ N___ The cooling system, including the hydraulic oil cooler, engine radiator shall be located toward the front of the tractor.
- Y___ N___ Engine shall feature five main bearings, providing a large bearing surface area.
- Y___ N___ Standard, single piece aluminum alloy pistons will be included.
- Y___ N___ Battery capacity shall be 1000 CCA, 12 volts, with two batteries.
- Y___ N___ The alternator shall be 150 amps, heavy-duty brushless.
- Y___ N___ The engine shall provide fwhp to a minimum of 9,843 ft (3,000 m) before altitude deration.
- Y___ N___ Engine air filter shall have a service indicator on the instrument panel.

POWERTRAIN/TRANSMISSION

- Y___ N___ The tractor shall be equipped with a hydrostatic drive system.
- Y___ N___ The hydrostatic drive shall provide completely independent adjustments of speed in forward and reverse.
- Y___ N___ The transmission speed shall be controlled by use of a thumb roller mounted on an ergonomically-designed joystick.
- Y___ N___ Hydrostatic drive shall provide infinite speed selection from 0 to 5.6 mph (0 to 9 km/h) in forward and 0 to 6.2 mph (0 to 10 km/h) in reverse.
- Y___ N___ Hydrostatic drive shall be standard, eliminating transmission shifting.
- Y___ N___ Machine shall have electronic hydrostatic control (EHC) standard.
- Y___ N___ The drive system shall provide independent power to each track for controlled power turns.
- Y___ N___ Counter rotation shall be a standard functionality of the machine.
- Y___ N___ Parking brakes shall be of spring applied and hydraulically released design.
- Y___ N___ Variable displacement pumps and drive motors shall be standard.
- Y___ N___ Transmission and steering shall be controlled with an ergonomically designed joystick located to the left of the operator.

HYDRAULICS

- Y___ N___ Blade control shall have a single, low effort lever with electro-hydraulic control for lift, tilt, and angle functions.
- Y___ N___ Pump output at rated engine speed shall be at least 17.2 gpm (65 L/min).
- Y___ N___ Implement Hydraulic pump shall be separate.

UNDERCARRIAGE

- Y___ N___ The undercarriage shall be designed and manufactured by the tractor manufacturer.
- Y___ N___ The undercarriage shall have reinforced track roller frames with seven internal bulkheads to better resist bending and torsional loads.
- Y___ N___ The undercarriages shall have lifetime lubricated track, carrier roller, track rollers and idlers.
- Y___ N___ The undercarriage shall have seven track rollers per side.
- Y___ N___ The undercarriages shall have hydraulic track adjustment by grease gun fully sealed with relief valve.
- Y___ N___ The tractor shall include Long-life sprocket rings or segments retained with nuts and bolts to facilitate easy replacement even if a bolt should break off in the sprocket hub.
- Y___ N___ Track link assemblies shall include factory-sealed cartridges which rotate and are filled with lubricating oils.
- Y___ N___ Idler design should not cause wear to link assemblies.
- Y___ N___ Full-length recoil guards shall be provided to prevent recycling of material through the undercarriage system.
- Y___ N___ The machine shall have a device which can reduce track slip in poor underfoot conditions which can be activated from operator's seat.
- Y___ N___ Track links shall include struts for added strength.
- Y___ N___ Each track shall have a minimum of one carrier roller.
- Y___ N___ LGP standard machine shall have a minimum 69 in (1,750 mm) gauge.
- Y___ N___ LGP standard machine shall have minimum 26 in (660 mm) shoes standard.
- Y___ N___ LGP standard machine shall have a minimum 91 in (2,310 mm) length of track on ground.

- Y___ N___ LGP standard machine shall have a minimum 4,726in² (30,492 cm²) ground contact area with standard shoes.
- Y___ N___ LGP standard machine shall have maximum ground pressure of 4.5 psi (31.2 kPa) when equipped with standard shoes, VPAT dozer, ROPS cab, fuel and lubricants.

FINAL DRIVES

- Y___ N___ Final drives shall be double reduction, planetary design.
- Y___ N___ Final drives shall be isolated from ground-induced shock loads.

OPERATORS STATION

- Y___ N___ ROPS cab shall meet ROPS criteria SAE J1040 MAY94, SAE J397 OCT95, ISO 3471: 1994, and ISO 3164: 1995.
- Y___ N___ The tractor shall have both left and right operator doors.
- Y___ N___ The cab shall have fresh air pressurization with replaceable filter.
- Y___ N___ The cab shall have front and rear windshield wipers and washer.
- Y___ N___ The cab shall have a standard rear-view mirror.
- Y___ N___ The tractor shall have a standard electrical horn.
- Y___ N___ An air conditioner, heater, and air circulation system shall be standard equipment in all cabs; both the air conditioning and the heater shall deliver filtered, pressurized, temperature-controlled air to the operator; air circulation system shall have multiple outlets, including outlets in the dashboard.
- Y___ N___ Canopy equipped tractors shall have a heater with outlets in the dashboard for optimal comfort in cold weather.
- Y___ N___ The standard air-suspension seat shall be fully adjustable for maximum operator comfort and control without tools; an orange retractable, at least 3 in (75mm) wide seat belt shall be standard.
- Y___ N___ The right hand and left hand side consoles shall each feature an adjustable armrest, wrist rest and joystick mount without tools.
- Y___ N___ Left and right lever controls shall be seat mounted and adjustable along with the wrist pads.
- Y___ N___ The monitoring system shall be located in front of the operator.
- Y___ N___ The monitoring system shall be electronic with real-time, visual feedback on engine and machine operating conditions.
- Y___ N___ The cab shall feature a computerized system to monitor important machine systems and alert the operator when potential problems occur.
- Y___ N___ Cab shall increase visibility through hexagonal design, angled doors, and tinted windows.
- Y___ N___ Back up alarm shall be standard.
- Y___ N___ Cab shall include a 12-volt power port.
- Y___ N___ Cab shall also include a dome light and cup holder for operator convenience.
- Y___ N___ A decelerator pedal shall allow the operator to modulate ground speed and apply brake.
- Y___ N___ The machine shall have four front and two rear LED work lights.
- Y___ N___ Operator sound exposure level shall not be greater than 78 dB(A) ANSI/SAE J1166 OCT 98.
- Y___ N___ The standard machine shall be "radio ready" including 12-volt power supply, speakers and wiring.

DOZER BLADE

- Y___ N___ Blade lift, angle and tilt shall be hydraulically adjustable from the operator station.

- Y___ N___ The blade shall be controlled with an ergonomically designed joystick located to the right of the operator. Blade angle shall be controlled using an ergonomically positioned thumb roller.
- Y___ N___ Blade pitch shall be infinitely adjustable from 52 degrees to 58 degrees.
- Y___ N___ The machine shall have a device which allows the blade pitch to be adjusted “on the go” from the operator’s seat.
- Y___ N___ Blade shall have a minimum 25 degree angle right or left.
- Y___ N___ Mainframe shall be of a one-piece design for increased reliability and durability.
- Y___ N___ The blade shall be a full width, four box-section construction.
- Y___ N___ All bulldozer pivot points shall be equipped with greasable zerk fittings.
- Y___ N___ Cutting edge shall have not less than four sections.
- Y___ N___ LGP VPAT blade shall be a maximum 126.7 in (3,220 mm) wide.
- Y___ N___ LGP VPAT blade shall be a minimum 39.8 in (1,010 mm) high.
- Y___ N___ LGP VPAT blade shall have a minimum 17.6 in (448 mm) tilt.
- Y___ N___ LGP VPAT blade shall have a minimum 30.2 in (767 mm) lift above ground.
- Y___ N___ LGP VPAT blade shall have a minimum 22.5 in (572 mm) drop below ground.
- Y___ N___ LGP VPAT shall have a minimum dozer capacity of 3.06 yd3 (2.34 m3) per SAE J729.

WORK TOOL OPTIONS

- Y___ N___ Parallelogram multi-shank ripper shall be available.
- Y___ N___ Winch full drum line pull shall be not less than 25,000 lb (11,340 kg).
- Y___ N___ Hydrostatic winch, driven by its own closed-loop hydrostatic system, shall be available.

SERVICEABILITY

- Y___ N___ Engine oil change interval shall be no less than 500 hours or three months.
- Y___ N___ Engine oil filter change interval shall be no less than 500 hours or three months.
- Y___ N___ A diagnostic test bank shall be included for ease of service.
- Y___ N___ Hydraulic oil change interval shall be no less than 3,000 hours or three years.
- Y___ N___ Hydraulic oil filter replacement interval can be no less than 2,500 hours
- Y___ N___ The machine shall include SOS fluid taps.
- Y___ N___ Daily service points, shall be accessible from ground level.
- Y___ N___ Quick disconnect hydraulic pressure taps shall be provided to allow rapid in-field diagnosis of malfunctions in implement or drive hydraulic systems.
- Y___ N___ Hinged service doors shall be offered.
- Y___ N___ The engine shall not require any valve lash adjustment.

MINIMUM SERVICE FILL CAPACITIES

- Y___ N___ Fuel tank capacity shall not be less than 51.5 gal (195 L).
- Y___ N___ Cooling system capacity shall not be less than 5 (19 L).
- Y___ N___ Each final drive shall have a capacity of not less than 2.6 gal (10 L).
- Y___ N___ Hydraulic tank capacity shall not be less than 23.8 gal (90 L).

ADDITIONAL FEATURES

Y___ N___ Machine shall have an option of a system that will communicate location and hours of operation.

Y___ N___ A machine security system shall be available to use electronically coded keys to limit usage by individual or time parameters.

REMAINDER OF PAGE INTENTIONALLY LEFT BLANK

MHE HYDRAULIC EXCAVATORS

BID SPECIFICATION for - 308 or EQUIVALENT

Compliance

BASIC SPECIFICATIONS

Y___ N___	Net horsepower at 2200 rpm shall be at least 70.3hp (52.4kW) according to ISO 9249
Y___ N___	SAE rated gross horsepower at 2200 rpm shall be at least 74.3 hp (55.4 kW) according to ISO 14396
Y___ N___	The machine must be CR (Compact Radius) with a maximum of 12" of overhang over the side of the tracks in the standard configuration
Y___ N___	Operating weight with the cab option shall be at least 20,678 lb (9380 kg)
Y___ N___	Lift capacity without bucket fitted, blade down, and std stick shall be no less than 7376 lb (3345 kg) at 14'8" (4.5 m) over the front and no less than 3627 lb (1645 kg) at 14'8" (4.5 m) over the side.
Y___ N___	Maximum digging depth with a long stick shall be at least 15'2" (4644 mm)
Y___ N___	Maximum digging height with a long stick shall be at least 23'1" (7038 mm)
Y___ N___	Maximum dump clearance shall be at least 16'6" (5071 mm) with a long stick
Y___ N___	Maximum reach with a long stick shall be at least 25'1" (7637 mm)
Y___ N___	Height to top of cab shall be 8'3" (2540 mm)
Y___ N___	Ground clearance shall be not less than 14" (349 mm).
Y___ N___	Transport width shall be 7' 5" (2300 mm) with 18" (450 mm) tracks
Y___ N___	Maximum vertical wall shall be no less than 11'2" (3405mm) with a long stick
Y___ N___	Manufacturer must offer an optional counterweight on the back of the machine for additional stability in extreme applications

ENGINE

Y___ N___	Engine shall be US EPA Tier 4 Final compliant
Y___ N___	Machine shall be a Turbo Charged, Water-cooled, 4 stroke, 4 cylinder diesel engine.
Y___ N___	Engine bore shall be 3.7" (94 mm) and stroke shall be 4.7" (120 mm)
Y___ N___	Engine displacement shall not be less than 203.2 cubic inches (3.33L).
Y___ N___	Engine shall have automatic engine idle that automatically lowers engine revolutions when machine is not in use to save fuel
Y___ N___	Machine shall maintain full engine power up to 8,200' (2,500 m) above sea level.
Y___ N___	Electrical system voltage shall be 12 volt
Y___ N___	Machine shall have a 900 CCA maintenance free battery
Y___ N___	Alternator shall not be rated at less than 60 amps.
Y___ N___	The machine's electrical system shall incorporate a resettable 'circuit breaker' switch.
Y___ N___	All wire harnesses shall be encased in nylon mesh bindings.
Y___ N___	Machine shall have sealed electrical connectors
Y___ N___	All wiring shall utilize color coded wires.
Y___ N___	The cooling system fan shall incorporate a guard.
Y___ N___	Water separator in fuel line shall be factory installed standard equipment.
Y___ N___	A factory installed high-ambient temperature cooling package capable of working conditions up to 126° F (52° C) shall be standard.
Y___ N___	The air cleaner shall incorporate both primary and safety elements.
Y___ N___	Machine shall have adjustable automatic engine shutdown
Y___ N___	Machine shall have automatic swing break

Y ___ N ___ Machine shall be equipped with battery disconnect standard
 Y ___ N ___ Engine shall be equipped with a standard ecology drain

POWERTRAIN/TRANSMISSION

Y ___ N ___ Travel speed shall be at least 1.9 mph (3.1 km/h) in low and 3.2 mph (5.1 km/h) in high
 Y ___ N ___ Traction force shall be at least 15,175 lbf (67.5 kN) in low and 6,250 lbf (27.8 kN) in high
 Y ___ N ___ Factory installed, standard auto two speed which provides better fuel efficiency since the machine will automatically go into higher power/torque only when the system senses that it is required while dozing, counter rotating, and uphill travel.

HYDRAULIC SYSTEM

Y ___ N ___ **Machine shall have one variable displacement piston pump with an output of 44 gal/m (167 L/m) at 2400 rpm**
 Y ___ N ___ Equipment operating pressure shall be at least 4,134 psi (285 bar).
 Y ___ N ___ Travel operating pressure shall be at least 4,134 psi (285 bar).
 Y ___ N ___ Operating swing pressure shall be at least 3,626 psi (250 bar).
 Y ___ N ___ Primary circuit shall have an output of at least 35 gal/min (131 LPM)
 Y ___ N ___ Secondary circuit shall have an output of at least 9 gal/min (33 LPM)
 Y ___ N ___ An accumulator shall be provided to allow the boom and stick to be lowered to the ground in the case of a dead engine. Also to allow depressurization of hydraulic system in order to attach work tools.
 Y ___ N ___ All fittings shall be of the O Ring Face Seal type for superior sealing against leaks.
 Y ___ N ___ The boom cylinder circuit shall come standard with zero leak boom section valve for zero boom drift
 Y ___ N ___ Factory installed combined function (one-way/two-way) auxiliary high pressure hydraulic circuit shall be standard.
 Y ___ N ___ Factory installed hydraulics to operate a hydraulic quick coupler shall be available.
 Y ___ N ___ The bucket service shall have a relief valve fitted to protect the cylinder against shock loading.
 Y ___ N ___ **Machine shall come standard with a trim feature that can be adjusted. This allows to correct machine travel if there is abnormal wear of tracks or other components.**
 Y ___ N ___ **The machines travel and throttle functions shall be electro over hydraulic controlled to maintain modulation throughout the machines life.**
 Y ___ N ___ End damping on both Boom and Stick cylinders shall help avoid spoil loss when loading at height and reduce shock loading in the machines structures.
 Y ___ N ___ **Machine shall have a load sensing, flow sharing, variable margin displacement piston pump system**
 Y ___ N ___ Auxiliary hydraulic valve shall be standard with standard hydraulic quick disconnects on the stick
 Y ___ N ___ **Machine is shall be equipped with smart tech electronic pump that monitors Hydraulic flows, pressure, temperature and ambient temperature to keep machine operating at maximum efficiency**

UNDERCARRIAGE

Y ___ N ___ Track length shall be 9' 4" (2880 mm)
 Y ___ N ___ Machine shall have 18" (450 mm) triple grouser shoes with additional holes that allow mounting of rubber street pads.
 Y ___ N ___ Track shoe width shall be 18" (450 mm) Available in either Rubber Belt, Steel Track or Steel Track with Rubber Pads
 Y ___ N ___ Factory installed 24" (600 mm) triple grouser track shall be available.

- Y___ N___ An idler guard shall be provided to maintain track alignment while traveling or working on slopes.
- Y___ N___ Ground pressure with 24" (600 mm) rubber tracks shall be no more than 5 psi (36.3 kPa)
- Y___ N___ Machine shall come standard with hydraulic track adjusters
- Y___ N___ Machine shall come standard with tie down eyes on track frame

OPERATORS STATION

- Y___ N___ **A color LCD monitor system which includes...As standard - Fuel level and coolant temperature gauges, maintenance and machine monitoring, performance and machine adjustments, numeric security code, multiple languages, camera ready, hour meter with wake up switch, and iog dial control with interface.**
- Y___ N___ **The cab shall be sealed and pressurized to maximize operator comfort.**
- Y___ N___ **Next Generation Stick Steer comes standard.**
- Y___ N___ **Travel cruise control when in Stick Steer mode shall be standard.**
- Y___ N___ **An integrated rear camera shall be available from the factory.**
- Y___ N___ Continuous flow must be able to be activated with flow in either direction and at any flow rate
- Y___ N___ Machine must have adjustable auxiliary flow control for better controllability of attachments
- Y___ N___ Pump flow shall decrease (auto-idle) when controls are in neutral for reduced fuel consumption and sound.
- Y___ N___ **Machine must be equipped with a standard power on demand offering over 10% fuel savings**
- Y___ N___ **A pattern control changer between ISO and SAE shall be standard within LCD Monitor.**
- Y___ N___ Proportional auxiliary control and proportional boom swing control shall be on the joystick
- Y___ N___ Joystick mounted controls give fine control at the operators finger tips and eliminate foot pedals from the floor which gives greater operator legroom.
- Y___ N___ The throttle shall be easily adjustable by means of a dial.
- Y___ N___ All controls shall be isolated when the control consoles are raised for entrance or exit of the operator station.
- Y___ N___ The machine shall not be able to start when any of the controls are 'live'.
- Y___ N___ The upper body swing lock shall be automatically applied upon travel or lowering the arm bar.
- Y___ N___ Operator's manual for the machine shall be permanently attached to the machine and stored in a lockable container.
- Y___ N___ Machine shall have the windshield wiper mounted in such a way that the wires do not have to be disconnected.
- Y___ N___ The rear window shall be able to be removed for escape in case of emergency.
- Y___ N___ Lower front window shall be able to be removed and secured within the cab.
- Y___ N___ The cab door will be a hinged door design. The door has a mechanism that will lock the door in the open position.
- Y___ N___ The cab shall have a polycarbonate skylight for visibility when loading at height.
- Y___ N___ Travel pedals shall be available and removable for ease of operation.
- Y___ N___ A four-way adjustable air suspension seat as standard
- Y___ N___ Operator sound pressure level shall be 72 dB(A) for cab when measured per ISO 6396 (dynamic)
- Y___ N___ Travel alarm shall be standard
- Y___ N___ **HVAC shall be standard with automatic temperature control with sealed and pressurized cab**

Y___ N___	Heat and Air conditioning shall be standard with variable temperature control settings with sealed and pressurized cab
Y___ N___	Heater shall have variable heat settings with sealed and pressurized cab
Y___ N___	Machine shall have multi function capability of boom swing and upper body swing for extra machine versatility in tight areas
Y___ N___	Air conditioning shall be standard on cab units with sealed and pressurized cab
Y___ N___	Boom swing and upper body swing shall be able to be operated at the same time to maximize machine versatility and productivity.
Y___ N___	Cab air conditioner shall have a primary filter that can be removed for inspection without any tools.
Y___ N___	Factory installed AM/FM stereo radio shall be standard includes use of Bluetooth®, USB, auxiliary, and microphone devices.
Y___ N___	Machine shall have a 3" (76 mm) wide florescent retractable seat belt as standard.
Y___ N___	Customizable operator settings including speed and response of boom, bucket and stick to adjust per operator preference.
Y___ N___	Cab shall have a beverage holder capable of holding a standard 12 oz (340 g) soft drink can.
Y___ N___	A 12 volt, 5 amp power supply with a cigar lighter type outlet shall be available for use of cell phones and two-way radios.
Y___ N___	Machine shall have adjustable armrests that can be adjusted with out tools
Y___ N___	Customizable security system shall come standard.
Y___ N___	Adjustable courtesy lighting shall come standard.
Y___ N___	Machine shall come standard with removable washable floor mat with molded foot rests
Y___ N___	Machine shall come standard with coat hook
Y___ N___	Machine shall have optional rain visor from factory

BOOM AND STICK

Y___ N___	The ability to order the machine with standard or long stick option shall be available.
Y___ N___	Machine shall come standard with a swing boom
Y___ N___	Machine equipped with a variable angle boom will be available from factory
Y___ N___	Digging force with a standard stick shall be at least 9,509 lb (42.3 kN)
Y___ N___	Digging force with a long stick shall be at least 8,032 lb (35.7 kN)
Y___ N___	Bucket digging force shall be at least 13,946 lb (62.0 kN)
Y___ N___	Bucket rotation angle shall be 180 degrees
Y___ N___	This stick will be fitted with a dedicated 8818 lb (4000 kg), rated lifting eye for safe craning
Y___ N___	A dual lock coupler shall be standard on mechanical or hydraulic quick couplers for added safety.
Y___ N___	Machine shall come thumb ready from factory
Y___ N___	Machine shall have one piece boom 133.9" (3400 mm)

BLADE

Y___ N___	Blade width shall be a minimum of 91" (2300 mm) for std track machines, and 97" (2450 mm) for wide track machines
Y___ N___	Blade on standard track machines shall have blade extensions available from the factory
Y___ N___	Blade height shall be at least 17" (431 mm)
Y___ N___	Blade dig depth shall be at least 16" (408mm)
Y___ N___	Blade lift height shall be at least 15" (369 mm)
Y___ N___	Dozer float shall be standard to give easy and fast site clear up and leveling.

Y ___ N ___

Blade shall come standard with bolt-on reversible wear edge

SWING SYSTEM

Y ___ N ___

Swing speed shall be 10 rpm

Y ___ N ___

Left swing without stop shall be at least 80 degrees

Y ___ N ___

Left swing with stop shall be at least 60 degrees

Y ___ N ___

Right swing shall be at least 50 degrees

Y ___ N ___

Machine shall have a spring applied, hydraulic release automatic swing break

WORK TOOL OPTIONS

Y ___ N ___

A quick coupler system shall be available (mechanical and hydraulic), which will pick up the 'direct mounted' work tools.

Y ___ N ___

The hydraulic quick coupler option shall have the lines available to be installed from the factory.

Y ___ N ___

Coupler must offer the option to turn the bucket around in front shovel positioning providing the advantage of digging under obstacles.

SERVICEABILITY

Y ___ N ___

All daily maintenance areas shall be situated where they can be easily reached from ground level

Y ___ N ___

Fuse box shall be open able without tools.

Y ___ N ___

Track rollers and carrier rollers shall be lifetime lubricated for increased service life.

Y ___ N ___

Grease lubricated track shall be provided as standard equipment for increased service life.

Y ___ N ___

Track shall have a split-pin type master pin that makes track attachment and removal easier.

Y ___ N ___

Scheduled oil sampling port for the main hydraulic system shall be provided for hydraulic oil to simplify sampling.

Y ___ N ___

An engine coolant sampling port shall be provided to allow engine coolant to be tested for antifreeze and additive strengths.

Y ___ N ___

Radial seal air filter with double layered filter core shall be provided for better filtration.

Y ___ N ___

One maintenance-free battery shall be provided.

Y ___ N ___

Hydraulic system pressure taps shall be included for quick, easy, efficient, system diagnostics.

Y ___ N ___

The engine fan guard shall fully enclose (360°) the engine fan.

Y ___ N ___

An electronic priming fuel pump shall be standard.

Y ___ N ___

Machine shall come standard with an onboard remote monitoring and management system (Product Link) that supplies data including but not limited to hours of use, idle time, fuel consumption, load factors, GPS coordinates of location, and allow remote diagnostics and maintenance reviews to be performed.

MINIMUM SERVICE FILL CAPACITIES

Y ___ N ___

Fuel tank capacity shall not be less than 39 gal (147 L)

Y ___ N ___

Cooling system shall not hold less than 2.6 gal (10 L)

Y ___ N ___

Engine oil shall not hold less than 3.0 gal (11.2 L)

Y ___ N ___

Each final drive shall have a capacity of 0.26 gal (1L)

Y ___ N ___

Hydraulic tank shall not hold less than 14 gal (53 L) of hydraulic oil.

Y ___ N ___

Hydraulic system shall not hold less than 27 gal (104 L).

OWNING AND OPERATING COSTS

- Y___ N___ Factory-fill extended life coolant with a minimum life of 6,000 hours or three years, rated to -35° F (-37° C), shall be standard. Factory fill extended life coolant with a minimum life of 6,000 hours or three years, rated to -58° F (-50° C) shall be optional.
- Y___ N___ **Engine oil and filter shall have a recommended change interval of 500 hours**
- Y___ N___ **Hydraulic system oil shall have a recommended change interval of 6000 hours**

ADDITIONAL FEATURES

- Y___ N___ Factory installed extra counterweight optional
- Y___ N___ Counterweight shall have threaded lifting eyes.
- Y___ N___ A factory installed swivel guard shall be available
- Y___ N___ An integrated rear camera shall be available from the factory.
- Y___ N___ **Push to Start shall be an option with Bluetooth® key or operator code options available.**
- Y___ N___ **An advanced touch screen monitor shall be available.**
- Y___ N___ Boom and stick hose burst check valves shall be available from factory
- Y___ N___ Water jacket heater shall be available from factory
- Y___ N___ Refueling pump shall be available from factory
- Y___ N___ 2nd auxiliary hydraulic lines with case drain shall be available from factory
- Y___ N___ Air suspension heated seat shall be available from factory
- Y___ N___ A rotating beacon shall be available from factory
- Y___ N___ Cab guarding shall be available from factory
- Y___ N___ Computer based operator training shall be available from the manufacturer in both English and Spanish

REMAINDER OF PAGE INTENTIONALLY LEFT BLANK



MS DEPARTMENT OF WILDLIFE, FISHERIES, AND PARKS
1505 EASTOVER DRIVE, JACKSON, MS 39211-6374

BID COVER SHEET
ATTACHMENT A

RFX #3140003310 – TWO (2) DOZERS AND ONE (1) EXCAVATOR

The MDWFP is seeking to receive bids for RFX #3140003310, which is for a Two (2) Dozers and One (1) Excavator. Bids are to be submitted online in MAGIC or by paper submission, on or before November 30, 2022 at 2:00 PM CT.

PLEASE MARK YOUR ENVELOPE:

RFX #3140003310
Opening Date: November 30, 2022, 2:00 PM CT
Mississippi Department of Wildlife, Fisheries, and Parks
ATTN: Leigh Washington
1505 Eastover Drive
Jackson, MS 39211

SEALED BID – DO NOT OPEN

Company Name: _____

Quoted by: _____

Signature: _____

Address: _____
(Street/P.O. Box)

(City) (State) (Zip Code)

Company Representative: _____

Telephone Number: _____ Fax Number: _____

Email Address: _____



MS DEPARTMENT OF WILDLIFE, FISHERIES, AND PARKS
1505 EASTOVER DRIVE, JACKSON, MS 39211-6374

BID FORM
ATTACHMENT B

RFX #3140003310 – TWO (2) DOZERS AND ONE (1) EXCAVATOR

Company	Company Representative	Telephone

The pricing quoted must be inclusive of, but not limited to the following:

- All required equipment and materials
- All required insurance
- All required overhead
- All required profit
- All required transportation
- All required labor
- All required business and professional licenses, permits, fees, etc. (if any)
- Any and all other costs associated with performing the services

The pricing must include ALL associated costs with no additional or hidden fees. The MDWFP is requesting quotes for virgin paper as well as recycled paper.

BRIEF DESCRIPTION OF SERVICES TO BE CONDUCTED: RFX #3140003310 – TWO (2) DOZERS & ONE (1) EXCAVATOR		
DESCRIPTION	UNIT PRICE	TOTAL PRICE
One (1) D3 LP or Equivalent		
One (1) 299D3 XE or Equivalent		
One (1) MHE Hydraulic Excavator (308 or 309) or Equivalent		
	TOTAL PRICE	

By signing below, the Company Representative certifies that he/she has authority to bind the company, and further acknowledges on behalf of the company:

1. That he/she has thoroughly read and understands this Invitation for Bids, RFX #3140003310 , and the attachments herein;

2. That the company meets all requirements and acknowledges all certifications contained in this Invitation for Bids, RFX #3140003310 , and the attachments herein;
3. That the company agrees to all provisions of this Invitation for Bids, RFX #3140003310 , and the attachments herein;
4. That the company will perform, without delay, the services required at the prices quoted in this **Attachment B**; and
5. That, to the best of its knowledge and belief, the cost or pricing data submitted is accurate, complete, and current as of the submission date.
6. That the company has, or will secure, at its own expense, applicable personnel who shall be qualified to perform the duties required to be performed under this Invitation for Bids.

Printed Name: _____

Signature/Date: _____



RFX #3140003310 – TWO (2) DOZERS AND ONE (1) EXCAVATOR

EXECUTION OF BID MUST BE SIGNED IN INK

In compliance with this request for bid and subject to all the conditions and specifications listed herein, the undersigned offers and agrees to furnish any or all of the items upon which prices are quoted, at the price set opposite each item.

Bidder Information:

Company Name: _____

Address: _____
(Street/P.O. Box)

(City) (State) (Zip Code)

Telephone Number: _____ Fax Number: _____

Email Address: _____

Authorized Signature: _____
*(Member of Business/Corporation or Person Authorized to Sign on Behalf of Business)

Printed Name: _____

Title: _____

Date: _____

Acknowledgment of Amendments: (if applicable)

Amendment No. 1 _____

Amendment No. 2 _____

***Signature of bidder must be in ink**

Printed Name/Title: _____

Signature/Date: _____