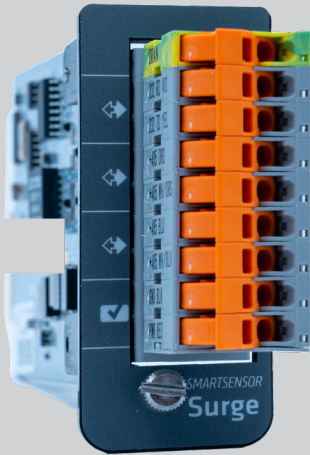
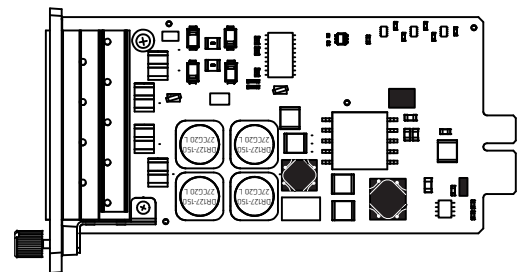
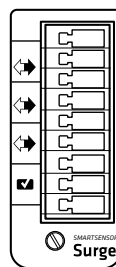
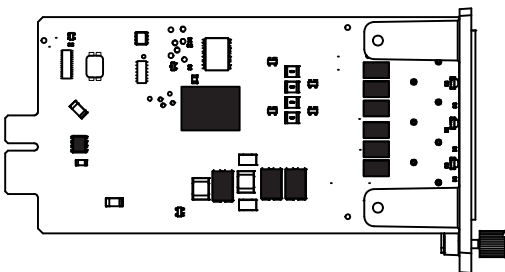


Surge card allowing for SmartSensor connectivity

The SmartSensor Surge card allows you to protect the Arc from surges when using the SmartSensor HD. Easy to install and remove in the field, the card is secured directly into the back of the Arc. Moreover, it provides a convenient place to terminate the sensor cable while at the same time protecting from surges on that cable. If a surge occurs, don't replace the whole Arc—just replace the card!



- Designed for use with the Arc in an installation with a SmartSensor HD and SmartSensor Matrix
- Protects the Arc and other cabinet equipment against surges on the sensor cable
- In case of surge, the card can be easily replaced, negating the need to replace the whole Arc or send the Arc in for repairs
- Quick and easy installation in the field requires only a slotted screwdriver
- Comes with terminal block plug needed to terminate sensor cable into card
- Multi-stage surge protection for data and DC power
- FCC-compliant
- Complies with NEMA TS2-2003 environmental testing
- Surge immunity complies with IEC 61000-4-5 level 4 standard



SmartSensor Surge technical specifications

Physical properties

- Dimensions: 4.8 in. × 2.7 in. × 1.1 in. (12.1 cm × 6.8 cm × 2.9 cm)
- Weight: 0.251 lbs (0.11 kg)

Operating conditions

- Ambient operating temperature: -29°F to 165°F (-34°C to 74°C)
- Humidity: up to 95% RH

Connections

- Port for pluggable terminal blocks, with included insulation displacement (IDC) terminal block plug

Surge protection

- DC power
 - Clamping voltage: 28 VDC
- RS-485
 - Clamping voltage: 5 VDC
- RS-232
 - Clamping voltage: 12 VDC
- Surge immunity sensor ports: IEC/EN 61000-4-5 level 4

Testing

- Complies with the applicable standards stated in the NEMA TS2-2003 standard
- Shock pulses of 10 g, 11 ms half sine wave
- Vibration of 0.5 Grms up to 30 Hz
- 300 V positive/negative pulses applied at one pulse per second
- Stored at -49°F (-45°C) for 24 hours
- Stored at 185°F (85°C) for 24 hours
- Operation at -29.2°F (-34°C)
- Operation at 165.2°F (74°C)
- FCC-compliant
- Passes manufacturer's test before shipping

Support

- Extended support options available; contact a Wavetronix representative for more information
- Comprehensive user guide

Warranty

- Five-year warranty against material and workmanship defect

Ordering information

SmartSensor Surge
102-0525

Contact us

801.734.7200
sales@wavetronix.com
www.wavetronix.com