

RDG 50 GREAT THERMAL PROTECTION, TEAR STRENGTH AND FLEXIBILITY.

INNO
TEX
ENERGY™

Shorter front, longer back coat. Low-rise pant. Streamline design packed with a host of innovative, ergonomic features.

STANDARD FEATURES

A VARIABLE HEIGHT COLLAR™

Low-rise front, high-rise back neck/collar configuration. US Patent 8,151,371

B NO-GAP™ THROAT FLAP

Provides a NO-GAP™ thermal protection.

C ERGONOMIC FULL MOTION NOSEAM™ SHOULDER

Designed to follow natural arm movements for optimal mobility. Seams are placed away from high-abrasion areas.

D RETRACTABLE ACTION BACK

Adds length across your back. Increased mobility when reaching and stretching.

E DURAHEM™ SLEEVE AND LEG HEMS

Ultra-resistant aramid-coated piping sewn to the cuff. Protects cuffs from abrasion. (Patent pending)

F ANGLED CUFF SLEEVE HEM

Increases protection for the top of the hand without compromising hand mobility.

G OFFSET SEAM DESIGN

Seams are positioned away from high-abrasion areas, increasing wear life.

H ADJUSTABLE BELT

Comes with a 2-inch Nomex™ belt.

I COMPLETE MOTION CROTCH

Allows greater freedom of movement and prevents twisting.

J ENHANCED MOBILITY KNEE™ (EMK™)

Enhances mobility without tugging. Ensures that the knee protection stays securely in place.

K NO-BULK™ PANT CLOSURE

Streamlined 3-layer pant closure flap.

L REFLECTIVE PIPING SEAMS

Increases visibility.

M EASY-TO-GRIP PADDED PULL TAB

Oversized and padded for easy handling with gloves.

PRECONFIGURED OPTIONS

1 Black Nomex® wristlet with thumb hole.

2 Left chest 8" X 4" X 2" radio pocket with mic loop.

3 Right chest flashlight holder - Clip with Hook & Loop Fastener.

4 Two 8" x 9" semi-bellows pockets on coat.

5 3M™ Scotchlite™ reflective 3" triple segmented trim (Lime/Yellow and Grey) in New York Pattern.

6 Two 10" x 10" bellows pockets on pants.

7 7.5" X 8" inside left pocket with 1" X 3" hook & loop attachment. (Not on picture)

8 Deluxe heavy-duty removable cotton "H" back suspenders with padding.

Additional options available on request (\$).

TPP 37.3 THL 247

OUTER SHELL



ARMOR AP™ – Black color
400-denier multi-filament twill weave with water repellent finish.
Content: Kevlar®/Nomex®
Weight: 6.5 oz/yd²



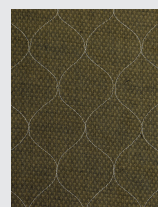
MOISTURE BARRIER



Gore® RT 7100 3D
Substrate: Nomex® non-woven spunlace.
Film: Bi-component ePTFE membrane.
Total Weight: 4.6 oz/yd²

Gore® RT 7100

THERMAL LINER



Prism™ 2-layer
Face Cloth: 68% aramid / 21% FR viscose / 11% polyamide Dobby weave.
Batting: One layer of a E89™ spunlace - 2.3 oz/yd² and 1.5 oz/yd²
Total Weight: 7.4 oz/yd²



OPTIONS & SIZES


ADDITIONAL OPTIONS (\$)


COAT	CLASSIC™		ENERGY™		
	RDG 10	RDG 20	RDG 40	RDG 50	RDG 60
Mic loop / P.A.S.S. loop	●	●	●	●	●
Flashlight Holder - Clip with Hook & Loop Fastener (SL-90)	●	●	●	●	●
Flashlight Holder - Tab with Hook & Loop Fastener	●	●	●	●	●
Flashlight Holder - Riveted clip with Hook & Loop Fastener	●	●	●	●	●
Utility clip on shell strap	●	●	●	●	●
Utility clip on polymer coated aramid loop	●	●	●	●	●
D-Ring on shell strap	●	●	●	●	●
Riveted D-Ring	●	●	●	●	●
Riveted clip	●	●	●	●	●
Fixed glove strap	●	●	●	●	●
Removable utility clip QRS system			●	●	●
Removable utility glove strap QRS system			●	●	●
3M Scotchlite® 5686 - 3" (triple segmented trim) - Red-Orange & Grey			●	●	●
3M Scotchlite® 9586 - 3" (triple trim) - Red-Orange & Grey	●	●			

PANTS	RDG 10	RDG 20	RDG 40	RDG 50	RDG 60
Leg gaiter Neoprene	●	●	●	●	●
Fixed glove strap	●	●	●	●	●
D-Ring on shell strap	●	●	●	●	●
Riveted D-Ring	●	●	●	●	●
Riveted clip	●	●	●	●	●
Utility clip on shell strap	●	●	●	●	●
Kevlar belt	●	●			
Belt loops (4x1.5) unit	●	●			
3M Scotchlite® 5686 - 3" (triple segmented trim) - Red-Orange & Grey			●	●	●
3M Scotchlite® 9586 - 3" (triple trim) - Red-Orange & Grey	●	●			

SIZES

COAT 7 sizes, from S to 4XL. Comes in body 2 with regular sleeve length.								PANTS 28,30, 32 or 34 inseams.							
SIZE	S	M	L	XL	2XL	3XL	4XL	SIZE	S	M	L	XL	2XL	3XL	4XL
CHEST	36	40	44	48	52	56	60	WAIST	30	34	38	42	46	50	54

 **INNOTEX® USA**
2397 Harts Ferry Road
Ohatchee, AL 36271
USA

 **INNOTEX® CANADA**
275 Gouin Street
Richmond (Quebec)
Canada, J0B 2H0

CUSTOMER SERVICE
1-888-821-3121 (U.S. & Canada)
Tel: 819-826-5971
Fax: 819-826-5195

 **Kevlar®** | **Nomex®** |  **PERFORMANCE PRODUCTS, INC.**



www.innotexprotection.com

® Registered Trademark of INNOTEX INC. or their respective holders. / Rev. 04-16
Copyright 2019 INNOTEX INC. All rights reserved. Because of our ongoing commitment to product quality and development we reserve the right to change, cancel, discontinue or alter any specification, design or feature without prior notice and without incurring obligation.