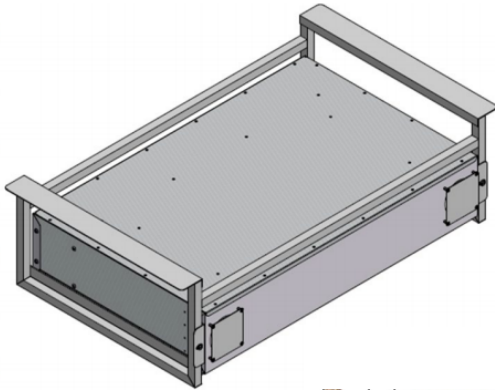


## ZONO ZC WDH 680/1400 ZONO Chamber and Sanitizing Engine with De-humidification



### KILLS 99.99% OF VIRUSES+ & 99.9% OF BACTERIA\* IN 30 MINUTES

- EFFECTIVE** ZONO disinfects and sanitizes many different surfaces including plastics, cloth, and electronics without the use of harsh liquid chemicals.
- SIMPLE** ZONO is quick & easy. Easy to set up, easy to operate. Load items into a cart, roll cart into the ZONO & 30 minutes later use the item, no rinsing, no wiping = no worry.
- SAFE** ZONO uses ozone, which disinfects/sanitizes much of the food we eat & water we drink. Numerous safety features exist inside & outside the units, making ZONO safe to operate in work/play areas.
- SUSTAINABLE** ZONO is environmentally friendly. It uses very small amounts of water & electricity and eliminates the need to bring toxic chemicals into your facility.



### VIRUSES & BACTERIA TESTED & CERTIFIED

\*Disinfects: Kills 99.99% of Norovirus on non-porous surfaces.

\*Sanitizes: Kills 99.9% of bacteria. Tested on non-porous and porous surfaces.

- Staphylococcus aureus (Staph)
- Methicillin-Resistant Staphylococcus aureus (MRSA)
- Escherichia coli (E. coli)
- Streptococcus pyogenes (S. pyogenes)
- Shigella dysenteriae (Shigella)
- Salmonella enteritidis (Salmonella)
- Pseudomonas aeruginosa (P. aeruginosa)

### SPECIFICATIONS/ FEATURES

- De-humidifier removes moisture from the chamber to dry items without heat.
- Exterior meets ASTM C1055 regulations. Safe to touch during operation.
- Capacity: Smallest model up to 680 Cu. Ft. Largest model up to 1,400 Cu. Ft.
- Engine connects to dedicated 120-volt electrical outlet.
- Ergonomically conscious rolling carts help to avoid bending and lifting of equipment.
- No down time between cycles.
- Equipped with a simple operating panel for ease of use.
- Guaranteed 3-year parts and labor warranty.
- Proudly Made in the USA.
- Exceeds NIOSH and OSHA safety & health standards.
- Conforms to EPA's FIFRA standards for Pest Control devices.

### INCLUDED WITH PURCHASE

- 1 ZONO Engine
- 1 Entry Door
- 1 Interior Control Panel
- 1 Exterior Control Panel
- 3 Wiring Harnesses & Seal Plate

### ACCESSORIES

RR 7 7-bin Cart   RR 10 10-bin Cart   MC 8 8-mat Cart   4S UC 4-shelf Utility Cart  
PC 2M 22 Pad Cart   HC 3M 48 Helmet Cart   GC Garment Cart   SD 16 Shoe Dryer

