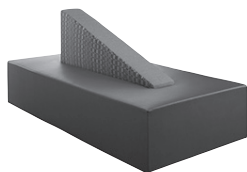


# MODULAR SEATING

## QUEUE MODULAR LOUNGE cont.

### Queue "Pablo"



W-94" D-44" SH-17.5" H-40"

INDOOR/  
OUTDOOR

STACK

WT

PKG

IN

N

13

Custom Skid

Fully upholstered high density foam  
Requires 3.5 yds per back, 2 yds per top panel & 8 yds per base

YDS	COM	1	2	3	4	5	6	7	8
13.5 total	\$8,080	\$8,741	\$9,160	\$9,497	\$10,267	\$11,009	\$11,995	\$13,331	\$15,113

### Queue "Pebble" (large)



W 42.5" SD-30" SH-18.5" H-18.5"

IN

N

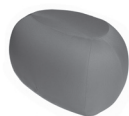
36

1 XL Box/  
4/Skid

Fully upholstered high density foam

YDS	COM	1	2	3	4	5	6	7	8
3.5 total	\$3,608	\$3,780	\$3,888	\$3,976	\$4,175	\$4,368	\$4,623	\$4,970	\$5,432

### Queue "Pebble" (small)



W-28" D-21" SH-18.5" H-18.5"

IN

N

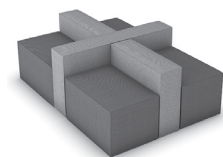
16

1 XL Box/  
4/Skid

Fully upholstered high density foam

YDS	COM	1	2	3	4	5	6	7	8
2	\$2,492	\$2,590	\$2,652	\$2,702	\$2,816	\$2,926	\$3,072	\$3,270	\$3,534

### Queue "Quadrant"



Fully upholstered high density foam  
Includes 6 merge connectors

IN

N

YDS	COM	1	2	3	4	5	6	7	8
18	\$10,997	\$11,879	\$12,437	\$12,887	\$13,913	\$14,903	\$16,217	\$17,999	\$20,375

### Queue "Quadrant" C



Fully upholstered high density foam  
Includes 8 Merge Connector Sets and  
2 Flat Brackets (No charge)

IN

N

QUEUE Seat 3020 30" w X 20" d x 17.5" h  
QUEUE Straight Back 30 30" w x 10" d x 25" h  
QUEUE Straight Back 50 50" w x 10" d x 25" h  
QUEUE Half Round 50 50" w x 25" d x 17.5" h

YDS	COM	1	2	3	4	5	6	7	8
10.75	\$16,330	\$16,856	\$17,190	\$17,458	\$18,071	\$18,662	\$19,447	\$20,511	\$21,930

### Queue "Serenity" Configuration



Fully upholstered high density foam  
Includes 12 merge connectors

IN

N

YDS	COM	1	2	3	4	5	6	7	8
33 total	\$26,521	\$28,138	\$29,161	\$29,986	\$31,867	\$33,682	\$36,091	\$39,358	\$43,714

### Queue "Serpentine"



Seats-30" x 40" SH-18.5"

IN

N

Fully upholstered high density foam  
Includes 6 merge connectors

YDS	COM	1	2	3	4	5	6	7	8
18 total	\$14,357	\$15,239	\$15,797	\$16,247	\$17,273	\$18,263	\$19,577	\$21,359	\$23,735

# MODULAR SEATING

## QUEUE MODULAR LOUNGE cont.

										INDOOR/ OUTDOOR	STACK	WT	PKG
<b>Queue "Slinky"</b>										IN	N		
Fully upholstered high density foam Includes 16 merge connectors													
YDS	COM	1	2	3	4	5	6	7	8				
47.5 total	\$27,305	\$29,632	\$31,105	\$32,292	\$35,000	\$37,612	\$41,080	\$45,782	\$52,052				



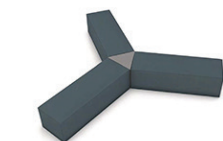
<b>Queue "Tetris"</b>										IN	N		
Fully upholstered high density foam Includes 20 merge connectors													
YDS	COM	1	2	3	4	5	6	7	8				
62 total	\$54,845	\$57,883	\$59,805	\$61,355	\$64,889	\$68,299	\$72,825	\$78,963	\$87,147				



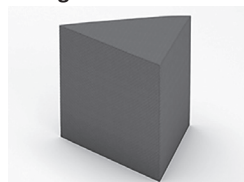
<b>Queue "TicTacToe"</b>										IN	N		
Fully upholstered high density foam Includes 10 merge connectors													
YDS	COM	1	2	3	4	5	6	7	8				
24 total	\$14,483	\$15,659	\$16,403	\$17,003	\$18,371	\$19,691	\$21,443	\$23,819	\$26,987				



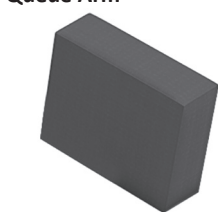
<b>Queue "Y" Configuration</b>										IN	N	163	3 XL boxes/ 2 skids
Fully upholstered high density foam Includes 4 merge connectors													
YDS	COM	1	2	3	4	5	6	7	8				
15 total	\$9,379	\$10,114	\$10,579	\$10,954	\$11,809	\$12,634	\$13,729	\$15,214	\$17,194				




<b>Triangle</b>										IN	N	7	2/Lg box
W-20" D-20" H-17.5"													
Fully upholstered high density foam Merge Connectors available, adjustable glides.													
YDS	COM	1	2	3	4	5	6	7	8				
2.00	\$925	\$1,023	\$1,085	\$1,135	\$1,249	\$1,359	\$1,505	\$1,703	\$1,967				



<b>Queue Arm</b>										IN	N	13	2/XL box
W-30" D-8" H-25"													
Fully upholstered high density foam													
Price 1: Outdura basic solid fabric included													
YDS	PRICE 1	COM	1	2	3	4	5	6	7	8			
2.00	\$1,199	\$989	\$1,087	\$1,149	\$1,199	\$1,313	\$1,423	\$1,569	\$1,767	\$2,031			



Round



Several standard sizes available, or custom sizes.

Fully upholstered high density foam

Merge Connectors available, adjustable glides.

Price 1: Outdura basic solid fabric included

IN

N

"20-12#

1 Custom box/ 4 skid

		YDS	Price 1	COM	1	2	3	4	5	6	7	8
Round 20	20 x 20 x 17.5	2.00	\$1,199	\$989	\$1,087	\$1,149	\$1,199	\$1,313	\$1,423	\$1,569	\$1,767	\$2,031
Round 30	30 x 30 x 17.5	2.50	\$1,978	\$1,676	\$1,799	\$1,876	\$1,939	\$2,081	\$2,219	\$2,401	\$2,649	\$2,979
Round 40	40 x 40 x 17.5	3.25	\$3,139	\$2,680	\$2,839	\$2,940	\$3,021	\$3,206	\$3,385	\$3,622	\$3,944	\$4,373
Round 50	50 x 50 x 17.5	3.75	\$4,481	\$3,877	\$4,061	\$4,177	\$4,271	\$4,485	\$4,691	\$4,965	\$5,336	\$5,831
Round 60	60 x 60 x 17.5	4.25	\$5,930	\$5,176	\$5,384	\$5,516	\$5,622	\$5,864	\$6,098	\$6,408	\$6,829	\$7,390



# MODULAR SEATING

## QUEUE MODULAR LOUNGE cont.

### Half Round



Several standard sizes available, or custom sizes.  
Fully upholstered high density foam  
Merge Connectors available, adjustable glides.

INDOOR/  
OUTDOOR

STACK

WT

PKG

IN

N

Price 1: Outdura basic solid fabric included

		YDS	Price 1	COM	1	2	3	4	5	6	7	8
Half Round 30	30 x 15 x 17.5	1.75	\$1,279	\$1,163	\$1,249	\$1,303	\$1,347	\$1,446	\$1,543	\$1,670	\$1,844	\$2,075
Half Round 40	40 x 20 x 17.5	2.50	\$2,003	\$1,694	\$1,817	\$1,894	\$1,957	\$2,099	\$2,237	\$2,419	\$2,667	\$2,997
Half Round 50	50 x 25 x 17.5	3.00	\$2,820	\$2,406	\$2,553	\$2,646	\$2,721	\$2,892	\$3,057	\$3,276	\$3,573	\$3,969
Half Round 60	60 x 30 x 17.5	3.50	\$3,703	\$3,184	\$3,355	\$3,464	\$3,551	\$3,751	\$3,943	\$4,199	\$4,545	\$5,007

### Seat/Angle Back



Several standard sizes available, or custom sizes.  
Fully upholstered high density foam  
Merge Connectors available, adjustable glides.

IN

N

20-26#

1/XL box

		YDS	COM	1	2	3	4	5	6	7	8
Seat/Angle Back 20	20 x 30 x 30	3.5	\$1,686	\$1,858	\$1,966	\$2,054	\$2,253	\$2,446	\$2,701	\$3,048	\$3,510
Seat/Angle Back 30	30 x 30 x 30	4.50	\$2,274	\$2,495	\$2,634	\$2,747	\$3,003	\$3,251	\$3,579	\$4,025	\$4,619
Seat/Angle Back 40	40 x 30 x 30	4.5	\$2,930	\$3,151	\$3,290	\$3,403	\$3,659	\$3,907	\$4,235	\$4,681	\$5,275
Seat/Angle Back 50	50 x 30 x 30	5.75	\$3,749	\$4,030	\$4,208	\$4,352	\$4,679	\$4,994	\$5,413	\$5,982	\$6,739
Seat/Angle Back 60	60 x 30 x 30	9	\$4,340	\$4,781	\$5,060	\$5,285	\$5,798	\$6,293	\$6,950	\$7,841	\$9,029

### Straight Back



Several standard sizes available, or custom sizes.  
Fully upholstered high density foam  
Merge Connectors available, adjustable glides.

IN

N

Price 1: Outdura basic solid fabric included

		YDS	Price 1	COM	1	2	3	4	5	6	7	8
Straight Back 20	20 x 10 x 25	1.50	\$883	\$725	\$798	\$845	\$882	\$968	\$1,050	\$1,160	\$1,308	\$1,506
Straight Back 30	30 x 10 x 25	2.00	\$1,199	\$986	\$1,084	\$1,146	\$1,196	\$1,310	\$1,420	\$1,566	\$1,764	\$2,028
Straight Back 40	40 x 10 x 25	2.50	\$1,538	\$1,270	\$1,392	\$1,470	\$1,532	\$1,675	\$1,812	\$1,995	\$2,242	\$2,572
Straight Back 50	50 x 10 x 25	3.00	\$2,096	\$1,748	\$1,895	\$1,988	\$2,063	\$2,234	\$2,399	\$2,618	\$2,915	\$3,311
Straight Back 60	60 x 10 x 25	4.00	\$2,342	\$1,921	\$2,117	\$2,241	\$2,341	\$2,569	\$2,789	\$3,081	\$3,477	\$4,005

### Curve Seat



W-47" D-20" H-17.5"

IN

N

28

1/Lg box

Fully upholstered high density foam  
Merge Connectors available, adjustable glides.

Price 1: Outdura basic solid fabric included

YDS	Price 1	COM	1	2	3	4	5	6	7	8
2.75	\$2,376	\$2,208	\$2,343	\$2,428	\$2,497	\$2,654	\$2,805	\$3,006	\$3,278	\$3,641

### Curve/Small Back



W-47" D-34" H-30"

IN

N

44

1/spc bx

Fully upholstered high density foam  
Merge Connectors available, adjustable glides.  
Requires 1.75 yds per back & 2.5 yds per seat

YDS	COM	1	2	3	4	5	6	7	8
4.25	\$4,232	\$4,441	\$4,572	\$4,679	\$4,921	\$5,155	\$5,465	\$5,886	\$6,447

# MODULAR SEATING

## QUEUE MODULAR LOUNGE cont.

INDOOR/  
OUTDOOR

STACK

WT

PKG

### Curve/Large Back

W-55" D-34" H-30"

IN

N



Fully upholstered high density foam  
Merge Connectors available, adjustable glides.  
Requires 2.75 yds per back & 3 yds per seat

YDS	COM	1	2	3	4	5	6	7	8
5.75	\$4,606	\$4,887	\$5,066	\$5,209	\$5,537	\$5,853	\$6,273	\$6,842	\$7,601

### Curve/Deep Seat

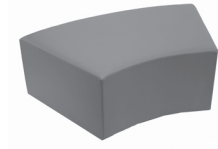
W-47" D-31" H-17.5"

IN

N

38lb

1/LG bx



Fully upholstered high density foam

YDS	COM	1	2	3	4	5	6	7	8
3.5	\$2,869	\$3,041	\$3,149	\$3,237	\$3,436	\$3,629	\$3,884	\$4,231	\$4,693

### Pie Table / Pie Power Table

W-21" D-31" H-24"

IN

N

38lb

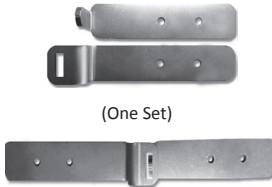
1/LG bx



Fully upholstered high density foam. Duramatte Black Top Standard.

	YDS	COM	1	2	3	4	5	6	7	8
Pie Table	1.75	\$1,727	\$1,813	\$1,867	\$1,911	\$2,010	\$2,107	\$2,234	\$2,408	\$2,639
Pie Power Table	1.75	\$4,415	\$4,501	\$4,555	\$4,599	\$4,698	\$4,795	\$4,922	\$5,096	\$5,327

### Queue Merge Connectors



PRICE IS \$112.00 LIST --  
Price is Per 1 Set (1 set = 1 Female  
and 1 Male Component)  
MINIMUM 2 Sets Required To  
Connect

### Queue Under Surface Power & USB Option



For use with legs only  
\$1,351 each

# MODULAR SEATING

## QUEUE OUTDOOR

INDOOR/  
OUTDOOR

STACK

WT

PKG

\*Constructed of marine grade plywood and stainless-steel hardware to hold up better to the elements. Cushions are made of high-density foam and graded in Outdura solution dyed acrylic fabrics or COM Sunbrella fabrics and are mold resistant and can withstand bleach cleaning.

### Queue Outdoor "Mega Bench"



W-96" D-50" H-30" SH-18"  
Pillow Diameter 12"  
Fully upholstered high density foam  
Requires 9 yds for body, 3.5 yds for pillow

IN/OUT N 305 Custom Skid  
305LBS (this includes packaging and the skid)  
1/Custom Skid, Skid size: 51"W x 100"L x 50"H

YDS	COM	1	2	3	4	5	6	7	8
12.5 total	\$8,869	\$9,482	\$9,869	\$10,182	\$10,894	\$11,582	\$12,494	\$13,732	\$15,382

### Queue Outdoor Curve Seat



W-47" D-20" H-17.5"

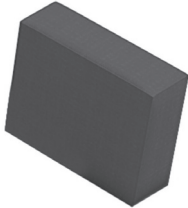
IN/OUT N 28 1/Lg box

Fully upholstered high density foam  
Merge Connectors available, adjustable glides.

Price 1: Outdura basic solid fabric included

YDS	Price 1	COM	1	2	3	4	5	6	7	8
2.75	\$2,732	<b>\$2,539</b>	\$2,674	\$2,759	\$2,828	\$2,985	\$3,136	\$3,337	\$3,609	\$3,972

### Queue Outdoor Straight Back



Several standard sizes available, or custom sizes.  
Fully upholstered high density foam  
Merge Connectors available, adjustable glides.

IN/OUT N

Price 1: Outdura basic solid fabric included

		YDS	Price 1	COM	1	2	3	4	5	6	7	8
Straight Back 20	20 x 10 x 25	1.50	\$1,015	<b>\$834</b>	\$908	\$954	\$992	\$1,077	\$1,160	\$1,269	\$1,418	\$1,616
Straight Back 30	30 x 10 x 25	2.00	\$1,379	<b>\$1,134</b>	\$1,232	\$1,294	\$1,344	\$1,458	\$1,568	\$1,714	\$1,912	\$2,176
Straight Back 40	40 x 10 x 25	2.50	\$1,769	<b>\$1,460</b>	\$1,583	\$1,660	\$1,723	\$1,865	\$2,003	\$2,185	\$2,433	\$2,763
Straight Back 50	50 x 10 x 25	3.00	\$2,411	<b>\$2,011</b>	\$2,158	\$2,251	\$2,326	\$2,497	\$2,662	\$2,881	\$3,178	\$3,574
Straight Back 60	60 x 10 x 25	4.00	\$2,694	<b>2209</b>	\$2,405	\$2,529	\$2,629	\$2,857	\$3,077	\$3,369	\$3,765	\$4,293

# MODULAR SEATING

## QUEUE OUTDOOR

### Queue Outdoor Seat



Several standard sizes available, or custom sizes.  
Fully upholstered high density foam  
Merge Connectors available, adjustable glides.

INDOOR/  
OUTDOOR

STACK

WT

PKG

IN/OUT

N

Price 1: Outdura basic solid fabric included

		YDS	Price 1	COM	1	2	3	4	5	6	7	8
Seat 2020	20 x 20 x 17.5	2.00	\$1,379	<b>\$1,138</b>	\$1,236	\$1,298	\$1,348	\$1,462	\$1,572	\$1,718	\$1,916	\$2,180
Seat 3020	30 x 20 x 17.5	2.75	\$1,933	<b>\$1,592</b>	\$1,727	\$1,812	\$1,881	\$2,038	\$2,189	\$2,390	\$2,662	\$3,025
Seat 4020	40 x 20 x 17.5	3.50	\$2,502	<b>\$2,066</b>	\$2,238	\$2,346	\$2,434	\$2,633	\$2,826	\$3,081	\$3,428	\$3,890
Seat 5020	50 x 20 x 17.5	4.25	\$3,326	<b>\$2,768</b>	\$2,977	\$3,108	\$3,215	\$3,457	\$3,691	\$4,001	\$4,422	\$4,983
Seat 6020	60 x 20 x 17.5	4.75	\$3,792	<b>\$3,154</b>	\$3,386	\$3,534	\$3,652	\$3,923	\$4,184	\$4,531	\$5,001	\$5,628

### Queue Outdoor Half Round



Several standard sizes available, or custom sizes.  
Fully upholstered high density foam  
Merge Connectors available, adjustable glides.

IN/OUT

N

Price 1: Outdura basic solid fabric included

		YDS	Price 1	COM	1	2	3	4	5	6	7	8
Half Round 30	30 x 15 x 17.5	1.75	\$1,471	<b>\$1,338</b>	\$1,424	\$1,478	\$1,522	\$1,622	\$1,718	\$1,846	\$2,019	\$2,250
Half Round 40	40 x 20 x 17.5	2.50	\$2,303	<b>\$1,949</b>	\$2,071	\$2,149	\$2,211	\$2,354	\$2,491	\$2,674	\$2,921	\$3,251
Half Round 50	50 x 25 x 17.5	3.00	\$3,244	<b>\$2,767</b>	\$2,914	\$3,007	\$3,082	\$3,253	\$3,418	\$3,637	\$3,934	\$4,330
Half Round 60	60 x 30 x 17.5	3.50	\$4,259	<b>\$3,661</b>	\$3,833	\$3,941	\$4,029	\$4,228	\$4,421	\$4,676	\$5,023	\$5,485

### Queue Outdoor Round



Several standard sizes available, or custom sizes.  
Fully upholstered high density foam  
Merge Connectors available, adjustable glides.

IN/OUT

N

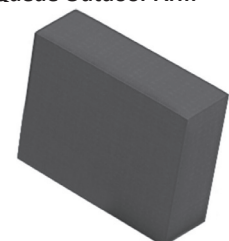
"20-12#

1 Custom  
box/ 4 skid

Price 1: Outdura basic solid fabric included

		YDS	Price 1	COM	1	2	3	4	5	6	7	8
Round 20	20 x 20 x 17.5	2.00	\$1,379	<b>\$1,138</b>	\$1,236	\$1,298	\$1,348	\$1,462	\$1,572	\$1,718	\$1,916	\$2,180
Round 30	30 x 30 x 17.5	2.50	\$2,274	<b>\$1,928</b>	\$2,051	\$2,128	\$2,191	\$2,333	\$2,471	\$2,653	\$2,901	\$3,231
Round 40	40 x 40 x 17.5	3.25	\$3,610	<b>\$3,082</b>	\$3,241	\$3,342	\$3,423	\$3,608	\$3,787	\$4,024	\$4,346	\$4,775
Round 50	50 x 50 x 17.5	3.75	\$5,153	<b>\$4,459</b>	\$4,643	\$4,759	\$4,853	\$5,067	\$5,273	\$5,547	\$5,918	\$6,413
Round 60	60 x 60 x 17.5	4.25	\$6,820	<b>\$5,952</b>	\$6,160	\$6,292	\$6,398	\$6,641	\$6,874	\$7,185	\$7,605	\$8,166

### Queue Outdoor Arm



W-30" D-8" H-25"

IN/OUT

N

13

2/XL box

Fully upholstered high density foam

Price 1: Outdura basic solid fabric included

YDS	PRICE 1	COM	1	2	3	4	5	6	7	8
2.00	\$1,379	\$1,138	\$1,236	\$1,298	\$1,348	\$1,462	\$1,572	\$1,718	\$1,916	\$2,180

# MODULAR SEATING

## SERENE

### Main Module



W-29" D-29" H-27" SH-18.5" AH-24"  
Price 1 includes the fabric and finish  
Add \$135 NET upcharge for COM  
4 yards

PRICE

\$2,381

INDOOR/  
OUTDOOR

Y

STACK

N

WT

25

PKG

3/skid

### Corner Module



W-29" D-29" H-27" SH-18.5" AH-24"  
Price 1 includes the fabric and finish  
Add \$175 NET upcharge for COM  
6 yards

PRICE

\$3,005

Y

N

29

3/skid

### Arm Chair



W-29" D-29" H-27" SH-18.5" AH-24"  
Price 1 includes the fabric and finish  
Add \$135 NET upcharge for COM  
4 yards

PRICE

\$2,845

Y

N

26

3/skid

### Side Chair with Armrest



W-29" D-29" H-27" SH-18.5" AH-24"  
Choice of Left Facing Arm or Right Facing Arm  
Price 1 includes the fabric and finish  
Add \$135 NET upcharge for COM - 4 yards

PRICE

\$2,541

Y

N

26

3/skid

## STUDIO

### Studio 550A - Corner Element with High Rise Back, 1 Side Panel and Cushion



W-29.5" D-27.5" H-51" SH-18"  
Adjustable Chrome or White Legs  
Upholstered COM or graded fabrics

IN

N

88

1 /Pallet

YDS	COM	1	2	3	4	5	6	7	8
5.75	\$4,238	\$4,520	\$4,698	\$4,842	\$5,170	\$5,486	\$5,906	\$6,475	\$7,234

### Studio 550C - Arm Chair High Rise Back, 2 Side Panels and Cushion



W-29.5" D-27.5" H-51" SH-18"  
Adjustable Chrome or White Legs  
Upholstered COM or graded fabrics

IN

N

88

1/Pallet

YDS	COM	1	2	3	4	5	6	7	8
5.75	\$5,181	\$5,463	\$5,641	\$5,785	\$6,113	\$6,429	\$6,849	\$7,418	\$8,177

# MODULAR SEATING

## STUDIO cont.

### Studio 551BC - 2 Seat Sofa with Low Back & Cushion



W-55" D-27.5" H-34" SH-18"

2 Seat Sofa with low back, cushion and adjustable white or chrome plated legs.

Upholstered COM or graded fabrics

INDOOR/  
OUTDOOR

STACK

WT

PKG

IN

N

109

1/Pallet

YDS	COM	1	2	3	4	5	6	7	8
6.75	\$4,307	\$4,638	\$4,847	\$5,016	\$5,401	\$5,772	\$6,265	\$6,933	\$7,824

### Studio 551C - 2 Seat Bench with High Back and Cushion



W-55" D-26" H-51" SH-18"

2 Seat Bench with high back, cushion and adjustable white or chrome plated legs.

Upholstered COM or graded fabrics

IN

N

132

1/Pallet

YDS	COM	1	2	3	4	5	6	7	8
7.5	\$4,307	\$4,675	\$4,907	\$5,095	\$5,522	\$5,935	\$6,482	\$7,225	\$8,215

### Studio 552B - 2 Seat Sofa with Low Back, Cushion & 2 Side Panels



W-59" D-27.5" H-34" SH-18"

2 Seat Sofa with low back, 2 side panels, cushion and adjustable white or chrome plated legs.

Upholstered COM or graded fabrics

IN

N

144

1/Pallet

YDS	COM	1	2	3	4	5	6	7	8
8.25	\$4,373	\$4,777	\$5,033	\$5,239	\$5,710	\$6,163	\$6,766	\$7,582	\$8,671

### Studio 552C - 2 Seat Bench with High Rise Back, 2 Side Panels and Cushion



W-59" D-27.5" H-51" SH-18"

Adjustable Chrome or White Legs

Upholstered COM or graded fabrics

High Back Rest: 4 yds

2 Side Panels: 4 yds

Seat: 1.60 yds

Cushion: 1.55 yds

IN

N

176

1 /Pallet

YDS	COM	1	2	3	4	5	6	7	8
11.15	\$6,308	\$6,854	\$7,200	\$7,479	\$8,114	\$8,728	\$9,542	\$10,645	\$12,117

### Studio 553C - 2 Seat Bench with Metal Legs



W-55" D-26" SH-18"

2 Seat Bench with adjustable white or chrome plated legs.

Upholstered COM or graded fabrics

IN

N

66

1/Pallet

YDS	COM	1	2	3	4	5	6	7	8
1.75	\$2,438	\$2,524	\$2,578	\$2,622	\$2,722	\$2,818	\$2,946	\$3,119	\$3,350

### Studio 554B - 2 Seat Sofa with Low Back, Cushion & Right Side Panel



W- 57" D-27.5" H-34" SH-18"

2 Seat Sofa with low back, cushion, right side panel and adjustable white or chrome plated legs.

Upholstered COM or graded fabrics

IN

N

130

1 /Pallet

YDS	COM	1	2	3	4	5	6	7	8
7.5	\$4,372	\$4,740	\$4,972	\$5,160	\$5,587	\$6,000	\$6,547	\$7,290	\$8,280



# MODULAR SEATING

## STUDIO cont.

### Studio 554C - 2 Seat Bench with High Back, Cushion & Right Side Panel



W-57" D-28" H-51" SH-18"

2 Seat Bench with high back, cushion, right side panel and adjustable white or chrome plated legs.

Upholstered COM or graded fabrics

INDOOR/  
OUTDOOR

STACK

WT

PKG

IN

N

154

1/Pallet

YDS	COM	1	2	3	4	5	6	7	8
9.5	\$5,307	\$5,773	\$6,067	\$6,305	\$6,846	\$7,369	\$8,062	\$9,003	\$10,257

### Studio 555B - 2 Seat Sofa with Low Back, Cushion & Left Side Panel



W-57" D-27.5" H-34" SH-18"

2 Seat Sofa with low back, cushion, left side panel and adjustable white or chrome plated legs.

Upholstered COM or graded fabrics

IN

N

130

1 /Pallet

YDS	COM	1	2	3	4	5	6	7	8
7.5	\$4,372	\$4,740	\$4,972	\$5,160	\$5,587	\$6,000	\$6,547	\$7,290	\$8,280

### Studio 555C - 2 Seat Bench with High Back, Cushion & Left Side Panel



W-57" D-28" H-51" SH-18"

2 Seat Bench with high back, cushion, left side panel and adjustable white or chrome plated legs.

Upholstered COM or graded fabrics

IN

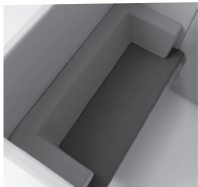
N

154

1/Pallet

YDS	COM	1	2	3	4	5	6	7	8
9.5	\$5,307	\$5,773	\$6,067	\$6,305	\$6,846	\$7,369	\$8,062	\$9,003	\$10,257

### Studio 556CU - Upholstered Lumbar Cushion



W-28.25" D-27" H-30" SH-18"

Turning Table with Urban Table top and white painted support.

IN

N

1/Pallet

YDS	COM	1	2	3	4	5	6	7	8
3	\$891	\$1,038	\$1,131	\$1,206	\$1,377	\$1,542	\$1,761	\$2,058	\$2,454

# MODULAR SEATING

## STUDIO cont.

### Studio 556EL Connecting Panel ONLY



W-39" D-2" H-51"  
Upholstered panel is available COM or choose any of our graded fabrics.

INDOOR/  
OUTDOOR

STACK

WT

PKG

IN

N

40

1 Custom  
box

YDS	COM	1	2	3	4	5	6	7	8
3.6	\$2,709	\$2,885	\$2,997	\$3,087	\$3,292	\$3,490	\$3,753	\$4,109	\$4,585

### Studio USB Set EL01



USB Set for the 2 seat sofa  
Indoor only.

• PRICE

\$738

### Studio 550T Compact Turning Table



W-28.25" D-27" H-30" SH-18"  
Turning Table with Urban Table top and white painted support.  
Stackable, indoor use only.

PRICE

\$1,252



# BOOTH SEATING

---

# BOOTH SEATING

## BRENT

INDOOR/  
OUTDOOR

WT

PKG

### Lounge

W-52" D-26.5" H-53" SH-19"

IN

100

1 Custom  
box/ 1 skid



Wood Frame, fully upholstered, 4.5" brushed aluminum legs  
Fabric seat- 2.5 yds.  
Fabric back- 7.5 yds

YDS	COM	1	2	3	4	5	6	7	8
9.50	\$4,071	\$4,537	\$4,831	\$5,069	\$5,610	\$6,133	\$6,826	\$7,767	\$9,021

## CALLA

### Booth Straight

W-46" D-24" H-36" SH-18" SD-18

IN

77

1 Custom  
box/ 1 skid



Wood Base / Upholstered Back  
(2 Yards Plain Fabric Inside Back & 3 Yards for Seat & Remainder)

YDS	COM	1	2	3	4	5	6	7	8
5.00	\$3,108	\$3,353	\$3,508	\$3,633	\$3,918	\$4,193	\$4,558	\$5,053	\$5,713

## CHARLES

### Booth Straight

W-46" D-25" H-35" SH-18" SD-18"

IN

77

1 Custom  
box/ 1 skid



Wood Base / Button Tufted Back  
(5 Yards Plain Fabric / 2 Back & 3 Seat)

YDS	COM	1	2	3	4	5	6	7	8
5.00	\$3,505	\$3,750	\$3,905	\$4,030	\$4,315	\$4,590	\$4,955	\$5,450	\$6,110

## CLUB

### Booth Straight

W-73" D-30" SD-22" H-67" SH-18.5" AH-72"

IN

1 Custom  
box/ 1 skid



Wood Base /Aluminum Legs /Upholstered Back

YDS	COM	1	2	3	4	5	6	7	8
24.00	\$8,875	\$10,051	\$10,795	\$11,395	\$12,763	\$14,083	\$15,835	\$18,211	\$21,379

## CYBER

### Booth Straight

W-120" D-30" SD-27" H-86" SH-18.5"

IN

1 Custom  
box/ 1 skid



Wood Base / Upholstered Back

YDS	COM	1	2	3	4	5	6	7	8
42.00	\$13,385	\$15,443	\$16,745	\$17,795	\$20,189	\$22,499	\$25,565	\$29,723	\$35,267

# BOOTH SEATING

## ELYSE MODULAR BOOTH SYSTEM *(Patent Pending)*

INDOOR/  
OUTDOOR

WT

PKG

### Elyse-48



BACK PANEL OPTIONS

Tall Back: W-48" D-25" H-65.5" SH-17" SD-17.5"  
Low Back: W-48" D-25" H-48" SH-17" SD-17.5"  
High back seat & inside back only: 6.75 yds  
Low back seat & inside back only: 5.0 yds

**Price 1:** Black ABS Base / **Fully Upholstered** Seat, Inside & Outside Back

**Price 2:** Black ABS Base / Upholstered Seat & Inside Back / Outside Back Panel: **Unfinished**

PRICE 1	YDS	COM	1	2	3	4	5	6	7	8
TALL BACK	9.5	\$4,654	\$5,119	\$5,414	\$5,651	\$6,193	\$6,715	\$7,409	\$8,349	\$9,603
LOW BACK	8.0	\$3,811	\$4,203	\$4,451	\$4,651	\$5,107	\$5,547	\$6,131	\$6,923	\$7,979
PRICE 2	YDS	COM	1	2	3	4	5	6	7	8
TALL BACK	7.25	\$4,355	\$4,710	\$4,935	\$5,116	\$5,529	\$5,928	\$6,457	\$7,175	\$8,132
LOW BACK	5.75	\$3,512	\$3,794	\$3,972	\$4,116	\$4,444	\$4,760	\$5,180	\$5,749	\$6,508

IN

195 lbs

1/Skid

### Elyse-24



BACK PANEL OPTIONS

Tall Back: W-24.5" D-25" H-65.5" SH-17" SD-17.5"  
Low Back: W-24.5" D-25" H-48" SH-17" SD-17.5"

**Price 1:** Black ABS Base / **Fully Upholstered** Seat, Inside & Outside Back

**Price 2:** Black ABS Base / Upholstered Seat & Inside Back / Outside Back Panel: **Unfinished**

PRICE 1	YDS	COM	1	2	3	4	5	6	7	8
TALL BACK	7.5	\$3,565	\$3,933	\$4,165	\$4,353	\$4,780	\$5,193	\$5,740	\$6,483	\$7,473
LOW BACK	6.25	\$3,140	\$3,447	\$3,640	\$3,797	\$4,153	\$4,497	\$4,953	\$5,572	\$6,397
PRICE 2	YDS	COM	1	2	3	4	5	6	7	8
TALL BACK	5.5	\$3,262	\$3,531	\$3,702	\$3,839	\$4,153	\$4,455	\$4,857	\$5,401	\$6,127
LOW BACK	4.75	\$2,840	\$3,073	\$3,220	\$3,339	\$3,610	\$3,871	\$4,218	\$4,688	\$5,315

IN

104 lbs

1/Skid

### Elyse-Corner



BACK PANEL OPTIONS

Tall Back: W-24.75" D-25" H-65.5" SH-17" SD-17.5"  
Low Back: W-24.75" D-25" H-48" SH-17" SD-17.5"

**Price 1:** Black ABS Base / **Fully Upholstered** Seat, Inside & Outside Back

**Price 2:** Black ABS Base / Upholstered Seat & Inside Back / Outside Back Panel: **Unfinished**

PRICE 1	YDS	COM	1	2	3	4	5	6	7	8
TALL BACK	9.25	\$5,348	\$5,802	\$6,088	\$6,320	\$6,847	\$7,356	\$8,031	\$8,947	\$10,168
LOW BACK	7.25	\$4,536	\$4,891	\$5,116	\$5,297	\$5,711	\$6,109	\$6,639	\$7,356	\$8,313
PRICE 2	YDS	COM	1	2	3	4	5	6	7	8
TALL BACK	7.25	\$4,536	\$4,891	\$5,116	\$5,297	\$5,711	\$6,109	\$6,639	\$7,356	\$8,313
LOW BACK	5.75	\$4,199	\$4,481	\$4,659	\$4,803	\$5,130	\$5,447	\$5,866	\$6,436	\$7,195

IN

162 lbs

1/Skid

## ELYSE ROUND MODULAR BOOTH

### Elyse Round-48



BACK PANEL OPTIONS

Tall Back: W-48" D-25" H-65.5" SH-17" SD-17.5"  
Low Back: W-48" D-25" H-48" SH-17" SD-17.5"  
High back seat & inside back only: 6.75 yds  
Low back seat & inside back only: 5.0 yds

**Price 1:** Black ABS Base / **Fully Upholstered** Seat, Inside & Outside Back

**Price 2:** Black ABS Base / Upholstered Seat & Inside Back / Outside Back Panel: **Unfinished**

PRICE 1	YDS	COM	1	2	3	4	5	6	7	8
TALL BACK	9.5	\$4,654	\$5,119	\$5,414	\$5,651	\$6,193	\$6,715	\$7,409	\$8,349	\$9,603
LOW BACK	8.0	\$3,814	\$4,206	\$4,454	\$4,654	\$5,110	\$5,550	\$6,134	\$6,926	\$7,982
PRICE 2	YDS	COM	1	2	3	4	5	6	7	8
TALL BACK	7.25	\$4,355	\$4,710	\$4,935	\$5,116	\$5,529	\$5,928	\$6,457	\$7,175	\$8,132
LOW BACK	5.75	\$3,512	\$3,794	\$3,972	\$4,116	\$4,444	\$4,760	\$5,180	\$5,749	\$6,508

IN

195 lbs

1/Skid

# BOOTH SEATING

## ELYSE ROUND MODULAR BOOTH SYSTEM cont. (Patent Pending)

### Elyse Round-24



BACK PANEL OPTIONS

Tall Back: W-24.5" D-25" H-65.5" SH-17" SD-17.5"

Low Back: W-24.5" D-25" H-48" SH-17" SD-17.5"

**Price 1:** Black ABS Base / **Fully Upholstered** Seat, Inside & Outside Back

**Price 2:** Black ABS Base / Upholstered Seat & Inside Back / Outside Back Panel: **Unfinished**

INDOOR/  
OUTDOOR

WT

PKG

IN

104 lbs

1/Skid

PRICE 1	YDS	COM	1	2	3	4	5	6	7	8
TALL BACK	7.5	\$3,565	\$3,933	\$4,165	\$4,353	\$4,780	\$5,193	\$5,740	\$6,483	\$7,473
LOW BACK	6.25	\$3,140	\$3,447	\$3,640	\$3,797	\$4,153	\$4,497	\$4,953	\$5,572	\$6,397
PRICE 2	YDS	COM	1	2	3	4	5	6	7	8
TALL BACK	5.5	\$3,262	\$3,531	\$3,702	\$3,839	\$4,153	\$4,455	\$4,857	\$5,401	\$6,127
LOW BACK	4.75	\$2,840	\$3,073	\$3,220	\$3,339	\$3,610	\$3,871	\$4,218	\$4,688	\$5,315

## EVANWOOD

### Booth Straight



W-46" D-24" H-42" SH-18" SD-18"

INDOOR/  
OUTDOOR

WT

PKG

IN

1 custom  
box/ 1 skid

Wood Base // Button Accented Back  
(6 Yards Plain Fabric // 2.5 Back & 3.5 Seat)

YDS	COM	1	2	3	4	5	6	7	8
6.00	\$2,936	\$3,230	\$3,416	\$3,566	\$3,908	\$4,238	\$4,676	\$5,270	\$6,062

## JAZZ

### 110 Booth Straight



W-39.25" D-26.25" H-43" SH-18"

IN

77

1 custom  
box/ 1 skid

STRAIGHT SECTION  
Black ABS Base  
(5 Yards Plain Fabric; 3 Back & 2 Seat)

YDS	COM	1	2	3	4	5	6	7	8
5.00	\$2,819	\$3,064	\$3,219	\$3,344	\$3,629	\$3,904	\$4,269	\$4,764	\$5,424

### 110 CT Booth Corner



W-39.25" D-31.5" H-43" SH-18"

IN

77

1 custom  
box/ 1 skid

CORNER SECTION  
Black ABS Base  
(7 Yards Plain Fabric; 5 Back & 2 Seat)

YDS	COM	1	2	3	4	5	6	7	8
7.00	\$3,324	\$3,667	\$3,884	\$4,059	\$4,458	\$4,843	\$5,354	\$6,047	\$6,971

### Double Booth



photo currently  
unavailable

W-39.25" D-48.5" H-43" SH-18"

IN

YDS	COM	1	2	3	4	5	6	7	8
9.00	\$5,458	\$5,899	\$6,178	\$6,403	\$6,916	\$7,411	\$8,068	\$8,959	\$10,147

# BOOTH SEATING

## MARIANNA

### Booth Straight



W-46" D-27" H-42" SH-18" SD-20"

INDOOR/  
OUTDOOR

WT

PKG

IN

1 custom  
box/ 1 skid

Wood Base // Button Accented Back  
(5 Yards Plain Fabric // 1.75 Back & 3.25 Seat)

YDS	COM	1	2	3	4	5	6	7	8
5.00	\$3,302	\$3,547	\$3,702	\$3,827	\$4,112	\$4,387	\$4,752	\$5,247	\$5,907

## MUSCARI

### Booth Straight



W-46" D-23.5" H-36" SH-18" SD-18"

IN

77

1 custom  
box/ 1 skid

Wood Base / Upholstered Back  
(1 Yard Plain Fabric Inside Back & 4 Yards for Seat & Remainder)

YDS	COM	1	2	3	4	5	6	7	8
5.00	\$2,654	\$2,899	\$3,054	\$3,179	\$3,464	\$3,739	\$4,104	\$4,599	\$5,259

## SINGLE STANDARD CUSTOM BOOTH

### Booth Straight



W-46" D-24" H-36" SH-18" SD-18"

IN

1 custom  
box/ 1 skid

Wood Base // Smooth Back  
(4 Yard Plain Fabric / 1 Back & 3 Seat)

YDS	COM	1	2	3	4	5	6	7	8
4.00	\$2,230	\$2,426	\$2,550	\$2,650	\$2,878	\$3,098	\$3,390	\$3,786	\$4,314

## WILMINGTON

### Booth Straight



W-46" D-24" H-42" SH-18" SD-18"

IN

1 custom  
box/ 1 skid

Wood Base // Smooth Back  
(5 Yards Plain Fabric / 1.5 Back & 3 Seat)

YDS	COM	1	2	3	4	5	6	7	8
4.00	\$3,895	\$4,091	\$4,215	\$4,315	\$4,543	\$4,763	\$5,055	\$5,451	\$5,979



# TABLES

---



# TABLES

## BASES

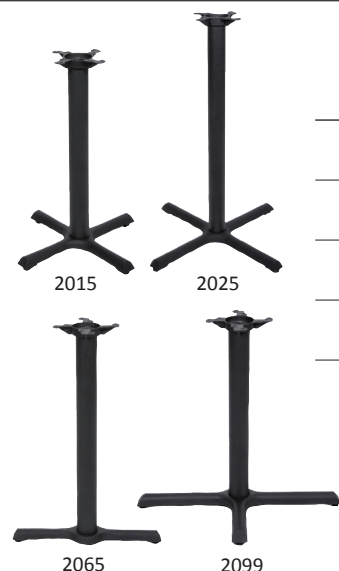
### 1900 SERIES



Cast Iron for indoor use.

ITEM	HT	SPREAD	TOP	DESCRIPTION	PRICE	WT	PKG
1908	Dine	8"	24"	Boltdown	\$352		
1917	Dine	17"	24" - 30"	Round	\$444	23	1/box-10 skid
1922	Dine	22"	36" - 40" or 24"x42"	Round	\$524	35	1/box-10 skid
1930	Dine	30"	48" - 60"	Round. 18" Spider	\$1,074	57	1/box-10 skid

### 2000 SERIES



Cast Iron for indoor use.

ITEM	HT	SPREAD	TOP	DESCRIPTION	PRICE	WT	PKG
2015	Dine	22"	24" - 30"	4 Leg	\$297	18	1/box-10 skid
2025	Dine	30"	36" - 42"	4 Leg	\$445	20	1/box-10 skid
2033	Dine	33"	42" - 60"	4 Leg. Black finish with 18" Spider	\$473	27	1/box-10 skid
2065	Dine	22" x 5"	48" & Longer (2 per table)	T Leg	\$232	13	1/box-10 skid
2099	Dine	22" x 30"	Oblong	4 Leg	\$317	19	1/box-10 skid

### 4000 SERIES



Cast Iron for indoor use.

ITEM	HT	SPREAD	TOP	DESCRIPTION	PRICE	WT	PKG
4020	Dine	20"	24" - 30"	3 Leg Classic. Black Finish 18" Spider	\$501	43	1/box-10 skid

# TABLES

## BASES

### 4150



Cast Iron for indoor use.

ITEM	HT	SPREAD	TOP	DESCRIPTION	PRICE	WT	PKG
4150	28.5"	24"	36" - 40"	4 Prong Cast Iron Bistro Base. Black Finish.	\$1,220	64	1/box-10 skid

### 7000 SERIES



Cast Iron for indoor use.

ITEM	HT	SPREAD	TOP	DESCRIPTION	PRICE	WT	PKG
7017	Dine	18"	24" - 30"	Round Spoon. Black Finish.	\$471	24	1/box-10 skid
7022	Dine	22"	36" - 40" or 24"x42"	Round Spoon. Black Finish.	\$564	36	1/box-10 skid

### 90000 SERIES



Suitable for indoor/outdoor use.

ITEM	HT	SPREAD	TOP	DESCRIPTION	PRICE	WT	PKG
90134	Dine	19"	24"-28"	Trumpet Base With Added Weight	\$877	37	1 box/ 10 skid
90135	Dine	22"	28"-36"	Trumpet Base With Added Weight	\$997	38	1 box/ 10 skid

\*Powder coat option available. Contact Customer Care for details



Suitable for indoor/outdoor use.

ITEM	HT	SPREAD	TOP	DESCRIPTION	PRICE	WT	PKG
90207	Dine	8"	Up to 24"	Surface Mount Base with Spider	\$560	19	1 box/ 20 skid
90207 BH	Bar	8"	Up to 24"	Surface Mount Base with spider	\$625	19	1 box/ 20 skid



Suitable for indoor/outdoor use.

ITEM	HT	SPREAD	TOP	DESCRIPTION	PRICE	WT	PKG
90218	Dine	18"	Up to 32"	With Spider	\$887	34	1 box/ 15 skid
90218 BH	Bar	18"	Up to 32"	With Spider	\$1,081	36	1 box/ 15 skid
90220	Dine	21"	Up to 38"	With Spider	\$1,193	53	1 box/ 15 skid
90220 BH	Bar	21"	Up to 38"	With Spider	\$1,335	55	1 box/ 15 skid
90230	Dine	21"	Up to 49"	With Spider & Single 3" Column	\$2,292	90	1 box/ 15 skid

# TABLES

## BASES

### 91000 & 92000 SERIES



Stainless Steel for indoor or outdoor use.

ITEM	HT	SPREAD	TOP	DESCRIPTION	PRICE	WT	PKG
91818	Dine	17"	Up to 30"	Square Base with spider	\$887	41	1 box/ 18 skid
91818-BH	Bar	17"	Up to 30"	Square Base with spider	\$1,070	43	1 box/ 18 skid
92121	Dine	22"	Up to 42"	Square Base with spider	\$1,085	63	1 box/ 18 skid
92121-BH	Bar	22"	Up to 32"	Square Base with spider	\$1,458	64	1 box/ 18 skid

### 91000 & 92000 SERIES cont.



Stainless Steel for indoor or outdoor use.

ITEM	HT	SPREAD	TOP	DESCRIPTION	PRICE	WT	PKG
92130	Dine	30" X 30"	Up to 48"	Square Base with spider	\$2,216	114	1 box/ 8 skid
92130 BH	Bar	30" X 30"	Up to 42"	Square Base with spider	\$2,120	116	1 box/ 8 skid
9211728	Dine	16" X 28"	24 x 48	Square Base with spider	\$1,405	66	1 box/ 8 skid
9211728BH	Bar	16" X 28"	24 x 48	Square Base with spider	\$1,659	69	skid

### 96000 SERIES



96022

ITEM	HT	SPREAD	TOP	DESCRIPTION	PRICE	WT	PKG
96017	Dine	17" Square	24x24"	Square Steel Base, Black	\$552	41	1 box/ 20 skid
96022	Dine	22" Square	up to 30"	Square Steel Base, Black	\$682	62	1 box/ 20 skid
96029	Dine	29" Square	up to 42"	Square Steel Base, Black	\$1,009		1 box/ 20 skid
96017 BH	Bar	17" Square	up to 24"	Square Steel Base, Black	\$589		1 box/ 20 skid
96022 BH	Bar	22" Square	up to 30"	Square Steel Base, Black	\$717		1 box/ 20 skid
96029 BH	Bar	29" Square	up to 42"	Square Steel Base, Black	\$1,042		1 box/ 20 skid

### 97000 SERIES



97017

ITEM	HT	SPREAD	TOP	DESCRIPTION	PRICE	WT	PKG
97017	Dine	17" Round	24x24"	Round Steel Base, Black (with spider)	\$515	34	1 box/ 20 skid
97022	Dine	22" Round	30" up to 36"	Round Steel Base, Black (with spider)	\$656	51	1 box/ 20 skid
97029	Dine	29" Round	up to 42"	Round Steel Base, Black (with spider)	\$958		
97017 BH	Bar	17" Round	up to 24"	Round Steel Base, Black (with spider)	\$548		
97022 BH	Bar	22" Round	up to 30"	Round Steel Base, Black (with spider)	\$717		
97029 BH	Bar	29" Round	up to 42"	Round Steel Base, Black (with spider)	\$991		

\*Powder coat option available. Contact Customer Care for details.

# TABLES

## BASES

### 98000 SERIES

Our ingenious stamped steel process creates a strong table base that is guaranteed to last a long time. A welded top plate with a column makes it one of the fastest table base assemblies, using only a single bolt to assemble any base plate style. Made of Steel with a smooth matte black finish. Table and bar height are available for both. **For indoor applications only.**



COLUMN DIAMETER	ITEM	SPREAD	Max Top Size	DESCRIPTION	DINE HEIGHT PRICE	BAR HEIGHT PRICE	WT	PKG
3"	98022-5x	22" x 5" X-Style	36" x 60" (with 2 bases)	Base Plate Stamped Steel Smooth Black Matte	\$287	\$310	36.85	10/skid
3"	98030-22X	30" x 22" X-Style	30" x 42"	Base Plate Stamped Steel Smooth Black Matte	\$391	\$414	49.72	10/skid
3"	98022-22X	22" x 22" X-Style	30" x 30"	Base Plate Stamped Steel Smooth Black Matte	\$353	\$376	45.08	10/skid
3"	98030-30X	30" x 30" X-Style	36" x 36"	Base Plate Stamped Steel Smooth Black Matte	\$439	\$497	54.37	10/skid
4"	98036-36X	36" x 36" X-Style	54" Round	Base Plate Stamped Steel Smooth Black Matte	\$543	\$601	74.41	10/skid

\*Powder coat option available. Contact Customer Care for details.

3"	98018-RD	18" Round	30" x 30"	Base Plate Stamped Steel Smooth Black Matte	\$515	\$538	65.11	10/skid
3"	98022-RD	22" Round	36" x 36"	Base Plate Stamped Steel Smooth Black Matte	\$676	\$699	85.13	10/skid
4"	98030-RD	30" Round	54" Round	Base Plate Stamped Steel Smooth Black Matte	\$1,005	\$1,063	131.63	10/skid

\*Powder coat option available. Contact Customer Care for details.

# TABLES

## BASES

### ALICE



Alice Cast Iron Bases are beautifully designed to enhance your Restaurant or Café.

For indoor use.

ITEM	HT	SPREAD	TOP	DESCRIPTION	PRICE	WT	PKG
Alice 22	29	22"	Max Top Size: 30"	Black / 3 Legs.	\$487	39	1/box-10 skid
Alice 26	29	26"	Max Top Size: 36"	Black / 3 Legs	\$583	41	1/box-10 skid
Alice 32	29	32"	Max Top Size: 52"	Black / 4 Legs	\$762	56	1/box-10 skid

### METRO



ITEM	WIDTH	DEPTH	HEIGHT	DESCRIPTION	INDOOR/ OUTDOOR	PRICE	WT	PKG
Dine Height	17.5"	17.5"	29	Suitable for tops 24" to 36" round and max square 32" in Chrome or Black with Gold or Chrome accent	IN	\$1,465	29	1/Lg Box 10 per skid
Bar Height	17.5"	17.5"	42	Suitable for tops 28" round and max square 28" x 28" in Chrome or Black with Gold or Chrome accent	IN	\$1,654	30	1/LG Box 10 per skid

### ALL WEATHER SERIES



Aluminum for indoor or outdoor use.

ITEM	HT	SPREAD	TOP	DESCRIPTION	PRICE	WT	PKG
ALB-06 Wt	Dine	24"	24" Top	3 Prong. Extra Weight.	\$271	15	1/box - 12 Skid
ALB 07 Wt	Dine	26"	28" - 36"	4 Prong. Extra Weight.	\$354	19	1/box - 12 Skid
ALB 11 Wt	Bar	26"	24" - 32"	4 Prong. Extra Weight.	\$365	16	1/box - 12 Skid
ALB 12	Dine	36.5" x 23.75"	24"x44" up to 32"x48"	Rectangle 22" Floor to Bottom Crossbar 22.5" Inside Column to Col. 36.5" Spider to Spider 23.75" End Leg to End Leg	\$466	15	1/box - 10 Skid

\*Powder coat option available. Contact Customer Care for details.

### SYLVIA



ITEM	HT	SPREAD	TOP	DESCRIPTION	PRICE	WT	PKG
Sylvia 16	29	16"	Max Top Size: 24"	Black / Round	\$771	53	1/box-10 skid
Sylvia 24	29	24"	Max Top Size: 36"	Black / Round	\$1,694	74	1/box-10 skid

Sylvia 16

Sylvia 26