

JULY 2013

BANDAG Tire & Retread Technology
Tread Product Guide

Southern Tire Mart



Solutions Provider to the Transportation Industry





INDEX	PAGE
OVER-THE-ROAD	2-3
PICKUP & DELIVERY	4
ON/OFF THE ROAD	5
SEVERE SERVICE	6
LIGHT TRUCK	7

APPLICATION SPECIFIC ADVANTAGE PROGRAM (ASAP)

With a commitment to deliver the best possible tire performance the commercial trucker can expect, Bandag continues with the Application Specific Advantage Program (ASAP). The specific tire performance needs of fleets, in given applications, will provide the foundation from which the Bandag tread product line continues.

This methodology moves Bandag from an internally, product driven development approach to an externally, customer-centered approach. Application Specific product strategy starts with the fleet customer by identifying needs within specific market segments and developing products that commercially and technically fit those needs.

ASAP is also about being best-in-class... that is best-in-class performance for a specific wheel position. When combined with Bandag's commitment to research and development and a substantial commercial and dedicated testing program, our ability to deliver durability and reliability is unsurpassed.

The pages of this tread guide allow you to see the ASAP strategy from beginning to end. Once the application has been defined, then the wheel position is recognized, as well as the specific vehicle configuration. It is at this point specific products can be identified that will best meet the fleet customer's need based on specific performance characteristics.

PERFORMANCE CHARACTERISTICS

Product rankings were assigned to each tread product based on its performance relative to the other tread products within that category (application/position/configuration). Ranking scores were assigned based on previous performance testing; if testing was not available, tire/tread knowledge and technical expertise were used to assign a ranking. While the ranking of each tread product should be used as a guide for a purchasing decision, the ranking information should not be construed as absolute.

OVER-THE-ROAD ALL POSITIONS	TREND WEAR	WET TRACTION	SNOW TRACTION	ICE TRACTION	ROLLING RESISTANCE
MegaTrek	A+	B	B	B	B
B710	B	B	B	B	A+
B97					

Treadwear testing shows a combination ranking of both dedicated (controlled) and commercial testing of the specific tread product. All testing is run to wear out or when the wear rate of the product has normalized over time where projections can be made.

The A, B, C and D positioning displays the corresponding ranking of the tread product.

Traction and Rolling Resistance testing was conducted according to industry standard test procedures. Every possible measure was used during testing to ensure accurate test results. We have also ranked these products in a A, B, C and D ranking with A being the top ranking parameter. All rankings of a tread product are comparable to similar products within the product matrix of the Bandag tread line.

THE BANDAG TREAD DESIGN NAMING CONVENTION

- A process for naming new tread products
- Know wheel position and application immediately

Example: BDR-AS = Bandag - **D**rive - **R**egional - **A**ll Season

IDENTIFIER:	WHEEL POSITION:	APPLICATION:	SPECIFIC QUALIFIER:
B = Bandag	D = Drive	L = Linehaul	AS = All Season
	R = Rib	LT = Light Truck	HT = High Torque
	T = Trailer	M = Mixed Service	SA = Spread Axle
		R = Regional	UWB = Ultra Wide Base
		V = Urban	W = Winter
		X = On/Off Road	WB = Wide Base
		Y = Severe Service	HG = High Grip

MegaTrek™

This is a deep aggressive tread design with solid shoulders that gives outstanding tread wear in over-the-road truckload and LTL applications.

TANDEM AXLE



SIZE	WIDTH	DEPTH
210	210mm	26/32
220	220mm	26/32
230	230mm	26/32

BDR-HT3

Designed specifically for high torque, single-axle tractors in LTL situations.

SINGLE AXLE



SIZE	WIDTH	DEPTH
210	210mm	28/32
220	220mm	28/32
230	230mm	28/32

B710 FuelTech®

Fuel-efficient tread designed for tandem-axle drive applications in long-haul and regional service. Complements the Bridgestone M710™ Ecopia™ drive tire.

TANDEM AXLE



SIZE	WIDTH	DEPTH
210	210mm	25/32
220	220mm	25/32
230	230mm	25/32

*EPA SmartWay® Verified
and CARB Compliant.*

BDR-AS™

Designed to give your trucks unstoppable traction in almost any weather condition. Overlapping lugs provide lots of gripping power.

TANDEM AXLE



SIZE	WIDTH	DEPTH
180	180mm	22/32
190	190mm	22/32
200	200mm	22/32

FCR™ Drive

This specially compounded, high mileage tread provides great traction while still allowing for excellent fuel efficiency in the drive position.

TANDEM AXLE



SIZE	WIDTH	DEPTH
8	8	20/32
8.5	8-10/32	20/32
9	8-20/32	20/32
230	230mm	20/32

*EPA SmartWay® Verified
and CARB Compliant.*

BDR-UWB

Delivers new tire performance at a fraction of new tire costs.

WIDE BASE



SIZE	WIDTH	DEPTH
380	380mm	24/32
390	390mm	24/32

BTT2™

A proven traction tread designed to provide adequate tread depth for drive tires on Class 8 tractors ready to be traded.

TANDEM AXLE



SIZE	WIDTH	DEPTH
210	210mm	14/32
220	220mm	14/32
230	230mm	14/32

BDL™

Designed for a wide range of applications. Tie bars stabilize shoulders for even, uniform wear. Open lug design delivers off-road traction.

TANDEM AXLE



SIZE	WIDTH	DEPTH
210	210mm	20/32
220	220mm	20/32
230	230mm	20/32

Drive Trac

A lightweight, cool-running tread that offers good traction in a variety of applications.



SIZE	WIDTH	DEPTH
8.5	8-10/32	18/32
9	8-20/32	18/32

D4310

A deep, all weather, tread that delivers excellent mileage while meeting the traction requirements of normal linehaul applications.



SIZE	WIDTH	DEPTH
8.5	8-10/32	22/32
9	8-20/32	22/32

OVER-THE-ROAD DRIVE	TREND WEAR	WET TRACTION	SNOW TRACTION	ICE TRACTION	ROLLING RESISTANCE
MegaTrek	A+	B	B	B	B
BDR-HT3	A+	B	B	C	C
B710 FuelTech	B	B	B	B	A+
BDR-AS	B+	B	A	A	C
FCR Drive	B+	B	D	B	B+
BDR-UWB	A	B	B	B	B
BTT2	D	C	C	C	C
BDL	C	C	C	C	D
Drive Trac	A	B	C	C	D
D4310	B	B	C	C	D
Ultra All-Position	B+	B	B	B	B

Ultra Drive™

A deep, all-weather tread with stone penetration protectors. Slotted shoulders and unique blading provide excellent traction.

TANDEM AXLE



SIZE	WIDTH	DEPTH
210	210mm	26/32
220	220mm	26/32
230	230mm	26/32

OVER-THE-ROAD | TRAILER

B197 FuelTech®

Fuel-efficient tread designed for single- & tandem-axle trailer & dolly applications in long-haul & regional service. Complements Bridgestone R197™ Ecopia™ trailer tire.

WIDE BASE



SIZE	WIDTH	DEPTH
210	210mm	11/32
220	220mm	11/32
230	230mm	11/32

*EPA SmartWay® Verified
and CARB Compliant.*

FCR™ Trailer

A specially compounded, high mileage shallow tread designed for today's trailers. Great traction while still allowing for excellent fuel efficiency.

SINGLE/TANDEM



SIZE	WIDTH	DEPTH
8	8	11/32
8.5	8-10/32	11/32
9	8-20/32	11/32
230	230mm	11/32

*EPA SmartWay® Verified
and CARB Compliant.*

BTL-SA™

Designed specifically for spread axle & multi-axle applications. This design provides serious protection from casing damage caused by twisting, scraping or scrubbing.

SINGLE/TANDEM SPREAD

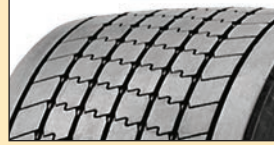


SIZE	WIDTH	DEPTH
200	200mm	16/32
210	210mm	16/32
220	220mm	16/32

BTR-UWB

For on-highway applications. Outside ribs enable this tread to withstand the extra stress and punishment put on tires during turns and cornering.

WIDE BASE



SIZE	WIDTH	DEPTH
380	380mm	11/32
390	390mm	11/32

InterTransit Rib™

A lightweight rib tread in two sizes, radial or bias, to accommodate casings used on intermodal trailers.

INTERMODAL - Radial or Bias



InterTransit Rib™ Radial

SIZE	WIDTH	DEPTH
200	200mm	11/32

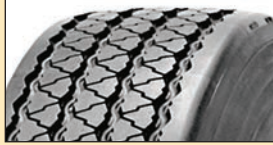
InterTransit Rib™ Bias

SIZE	WIDTH	DEPTH
180	180mm	11/32
190	190mm	11/32

BTL™

Angled 5-rib design prevents stone holding. Rounded shoulders for scrubbing resistance.

SINGLE/TANDEM



SIZE	WIDTH	DEPTH
210	210mm	11/32
220	220mm	11/32
230	230mm	11/32

Ultra All-Position™

This low void ratio tread will put more rubber on the road for increased tread life and improved traction.

CONVENTIONAL



SIZE	WIDTH	DEPTH
190	190	18/32
200	200mm	18/32
210	210mm	18/32
220	220mm	18/32
230	230mm	18/32
240	240mm	18/32

OVER-THE-ROAD TRAILER	TREND WEAR	WET TRACTION	SNOW TRACTION	ICE TRACTION	ROLLING RESISTANCE
B197 FuelTech	B	C	C	C	A+
FCR Trailer	A	D	C	C	B+
BTL-SA	A	D	D	C	B
BTR-UWB	A	C	D	C	B+
InterTransit Rib Radial	C	B	D	B	C
InterTransit Rib Bias	C	B	D	B	C
BTL	C	C	C	C	C
Ultra All-Position	B+	B	B	B	C



BDR-HT3

Designed specifically for high torque, single-axle tractors in LTL situations.

SINGLE AXLE



SIZE	WIDTH	DEPTH
210	210mm	28/32
220	220mm	28/32
230	230mm	28/32

BDL™

Designed for a wide range of applications. Tie bars stabilize shoulders for even, uniform wear. Open lug design delivers off-road traction.

SINGLE/TANDEM/STRAIGHT



SIZE	WIDTH	DEPTH
210	210mm	20/32
220	220mm	20/32
230	230mm	20/32

BDR-AS™

Designed to give your trucks unstoppable traction in almost any weather condition. Overlapping lugs provide lots of gripping power.

SINGLE/TANDEM/STRAIGHT



SIZE	WIDTH	DEPTH
180	180mm	22/32
190	190mm	22/32
200	200mm	22/32

BTT2™

A proven traction tread designed to provide adequate tread depth for drive tires on Class 8 tractors ready to be traded.

SINGLE/TANDEM/STRAIGHT



SIZE	WIDTH	DEPTH
210	210mm	14/32
220	220mm	14/32
230	230mm	14/32

PICKUP & DELIVERY DRIVE	TREND WEAR	WET TRACTION	SNOW TRACTION	ICE TRACTION	ROLLING RESISTANCE
BDR-HT3	A+	B	B	C	C
BDL	C	C	C	C	C
BDR-AS	B+	B	A	A	C
BTT2	D	C	C	C	C

ON/OFF ROAD | ALL POSITION

DRIVE

TRAILER



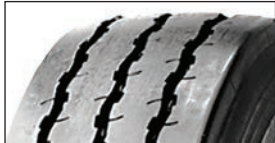
ON/OFF ROAD

Tires utilized in this application are used approximately 70% on the road, with the remaining usage in conditions similar to those encountered by severe service off-road applications. Mining, logging, oil field construction and waste operations are typical of the end-users found in this application. The wide range of vehicle types and configurations that operate within this application are looking for a tire product that combines both over-the-road and severe service characteristics.

BRM2™

Extra wide uninterrupted shoulder for maximum durability with a smooth sidewall for optimal performance in tight turns.

CONVENTIONAL



SIZE	WIDTH	DEPTH
250	250mm	26/32
260	260mm	26/32
270	270mm	26/32
280	280mm	26/32

BRM-WB

This rib-lug design, provides better wear across multiple wheel positions. Solid shoulders combat severe scrubbing. Wide grooves and voids enhance traction.

WIDE BASE



SIZE	WIDTH	DEPTH
290	290mm	20/32
320	320mm	20/32
340	340mm	20/32

BDM

For both the refuse and construction industries. Molded from a revolutionary rubber compound that provides significant improvement in wear.

SINGLE/TANDEM



SIZE	WIDTH	DEPTH
210	210mm	26/32
220	220mm	26/32
230	230mm	26/32
240	240mm	30/32
250	250mm	32/32
260	260mm	32/32
270	270mm	32/32
280	280mm	32/32

Drive Trac

A lightweight, cool-running tread that offers good traction in a variety of applications.



SIZE	WIDTH	DEPTH
8.5	8-10/32	18/32
9	8-20/32	18/32

ECL™ SST

Ideal for on/off road and heavy load spread-axle or multi-axle fleets. Handles the tortuous routes of tough applications.

CONVENTIONAL



SIZE	WIDTH	DEPTH
8	NA	15/32
8.5	NA	15/32
9	NA	15/32

BRM

For pickup and delivery industries. Molded from a revolutionary rubber compound that provides significant improvement in wear.

CONVENTIONAL



SIZE	WIDTH	DEPTH
210	210mm	26/32
220	220mm	26/32
230	230mm	26/32
240	240mm	26/32
250	250mm	26/32
260	260mm	26/32
270	270mm	26/32
280	280mm	26/32

RTP

An outstanding deep tread for superior mileage in on- and off-the-road uses. Voids are designed to eject stones which can extend casing life.



SIZE	WIDTH	DEPTH
8	8	18/32
8.5	8-10/32	18/32
9	8-20/32	18/32

ON/OFF ROAD ALL POSITION	TREND WEAR	WET TRACTION	SNOW TRACTION	ICE TRACTION	ROLLING RESISTANCE
BRM2	A+	D	D	D	C
BRM-WB	B	B	C	C	C
BRM	A	C	D	C	C
RTP	A	B	C	C	D
DRIVE	TREND WEAR	WET TRACTION	SNOW TRACTION	ICE TRACTION	ROLLING RESISTANCE
BDM	A	C	C	C	D
Drive Trac	A	B	C	C	D
TRAILER	TREND WEAR	WET TRACTION	SNOW TRACTION	ICE TRACTION	ROLLING RESISTANCE
ECL SST	A	D	D	C	C

**BDM**

For both the refuse and construction industries. Molded from a revolutionary rubber compound that provides significant improvement in wear.

SINGLE/TANDEM

SIZE	WIDTH	DEPTH
210	210mm	26/32
220	220mm	26/32
230	230mm	26/32
240	240mm	30/32
250	250mm	32/32
260	260mm	32/32
270	270mm	32/32
280	280mm	32/32

BRM2™

Extra wide uninterrupted shoulder for maximum durability with a smooth sidewall for optimal performance in tight turns.

CONVENTIONAL

SIZE	WIDTH	DEPTH
250	250mm	26/32
260	260mm	26/32
270	270mm	26/32
280	280mm	26/32

ECL™ SST

Ideal for on/off road and heavy load spread-axle or multi-axle fleets. Handles the tortuous routes of tough applications.

CONVENTIONAL

SIZE	WIDTH	DEPTH
8	NA	15/32
8.5	NA	15/32
9	NA	15/32

SEVERE SERVICE DRIVE	TREND WEAR	WET TRACTION	SNOW TRACTION	ICE TRACTION	ROLLING RESISTANCE
BDM	A	C	C	C	D
BRM2	A	C	C	C	C
TRAILER	TREND WEAR	WET TRACTION	SNOW TRACTION	ICE TRACTION	ROLLING RESISTANCE
ECL SST	A	D	C	C	D

LIGHT TRUCK



LIGHT TRUCK

This application is predominantly delivery vans and trucks whose routes vary based on location from rural to inter-city. Turning, braking and frequent stopping cause these tire products to experience rapid wear rates. Most applications operate on secondary or better highway conditions.

MetroMax™ Rib

Designed for all-wheel positions in light commercial applications that deal with severe inner city driving conditions as well as highway usage.

CONVENTIONAL/RECREATIONAL



SIZE	WIDTH	DEPTH
180	180mm	13/32
195	195mm	16/32
205	205mm	16/32

BDR-AS™

Designed to give your trucks unstoppable traction in almost any weather condition. Overlapping lugs provide lots of gripping power.

SINGLE/TANDEM/STRAIGHT



SIZE	WIDTH	DEPTH
180	180mm	22/32
190	190mm	22/32
200	200mm	22/32

LIGHT TRUCK	TREND WEAR	WET TRACTION	SNOW TRACTION	ICE TRACTION	ROLLING RESISTANCE
MetroMax Rib	A	B	B	A	B
BDR-AS	B+	B	A	A	C

Arkansas

BATESVILLE

1100 N. St. Louis (Hwy 167 N), 72501
(870) 698-6099

FORT SMITH

9700 Hwy 271 South, 72908
(479) 649-3900

LITTLE ROCK

12100 Valentine Rd @ I-40, 72117
(501) 955-5910

SEARCY

2009 E. Beebe-Capps Exp., 72143
(501) 268-1167

SPRINGDALE

333 E. Henry De Tonti @ I-540, 72762
(479) 306-4130

WEST MEMPHIS

3700 NE Service Rd. @ I-40, 72301
(870) 733-0100

Florida

FORT WALTON BEACH

309 Green Acres Rd., 32547
(850) 226-7233

PANAMA CITY

7528 Penny Rd. @ Hwy 231, 32404
(850) 914-0092

Louisiana

BATON ROUGE

14215 Florida Blvd., 70819
(225) 275-3600

GONZALES

10050 Industriplex @ I-10, 70737
(225) 744-3300

★ Store with Retread Plant
Maintenance Plus

LAUREL

2926 Ellisville @ I-59, 39440
(601) 428-4375

MERIDIAN

5480 I-20 N. Frontage, 39307
(601) 482-8880

TUPELO

103 Air Park Rd., 38801
(662) 844-4719

Nevada

LAS VEGAS

6875 Speedway Blvd. @ I-15, 89115
(702) 643-0712

Oklahoma

ENID

3409 S. Van Buren, 73703
(580) 234-4376

OKLAHOMA CITY

605 N. Meridian Ave., 73107
(405) 943-8341

TULSA

40 N. 129th E. Ave. @ I-44, 74116
(918) 838-2724

Tennessee

MEMPHIS

5398 Old Hwy. 78, 38118
(901) 795-8868

Texas

ABILENE

6629 I-20, 79563
(325) 690-0144

AMARILLO

6294 E. I-40, 79118
(806) 379-8000

AUSTIN

9665 East Hwy 290, 78724
(512) 416-1010

BEAUMONT

1625 Hwy 69 South, 77705
(409) 813-8400

BRIDGEPORT

1044 CR 1300 @ Hwy. 380, 76426
(940) 683-2280

BRYAN

1904 N. Earl Rudder Freeway, 77808
(979) 778-8683

CORPUS CHRISTI

8238 Leopard Street, 78410
(361) 241-1300

DALLAS - Retail

610 W. Mockingbird Lane @ I-35, 75247
(214) 631-7990

DALLAS

816 W. Mockingbird Lane @ I-35, 75247
(214) 631-7900

DALLAS

2728 N. Westmoreland Road, 75212
(214) 765-7099

FORT WORTH

1833 Mony St. @ I-35, 76102
(817) 332-9000

GAINESVILLE

1411 Southland Drive, 76240
(940) 665-3433

HARLINGEN

3314 South Expressway 83, 78552
(956) 421-2511

HOUSTON

9300 Currency @ I-10, 77013
(713) 672-2200

HOUSTON

22502 Loop 494, 77339
(281) 359-7222

LA PORTE

10941 W. Fairmont Parkway, 77571
(281) 842-8800

LAREDO

13501 Regional Dr. @ I-35, 78045
(956) 718-1050

LONGVIEW

3744 West Loop 281, 75604
(903) 759-3944

LUBBOCK

4113 E. Slaton Hwy (Hwy 84), 79404
(806) 748-5900

MIDLAND/ODESSA

12618 West I-20 E., 79765
(432) 563-5301

PHARR

345 West Expressway 83, 78577
(956) 702-9888

SAN ANTONIO

6081 I-10 East, 78219
(210) 666-6100

SAN ANTONIO

8823 I-10 East, 78109
(210) 366-1111

SULPHUR SPRINGS

14733 Hwy 11 East, 75471
(903) 866-3040

TEXARKANA

5302 West 7th Street, 75501
(903) 832-5790

TYLER

516 East N.E. Loop 323, 75706
(903) 593-5555

WACO

3259 Greig Dr. @ I-35, 76706
(254) 799-5527

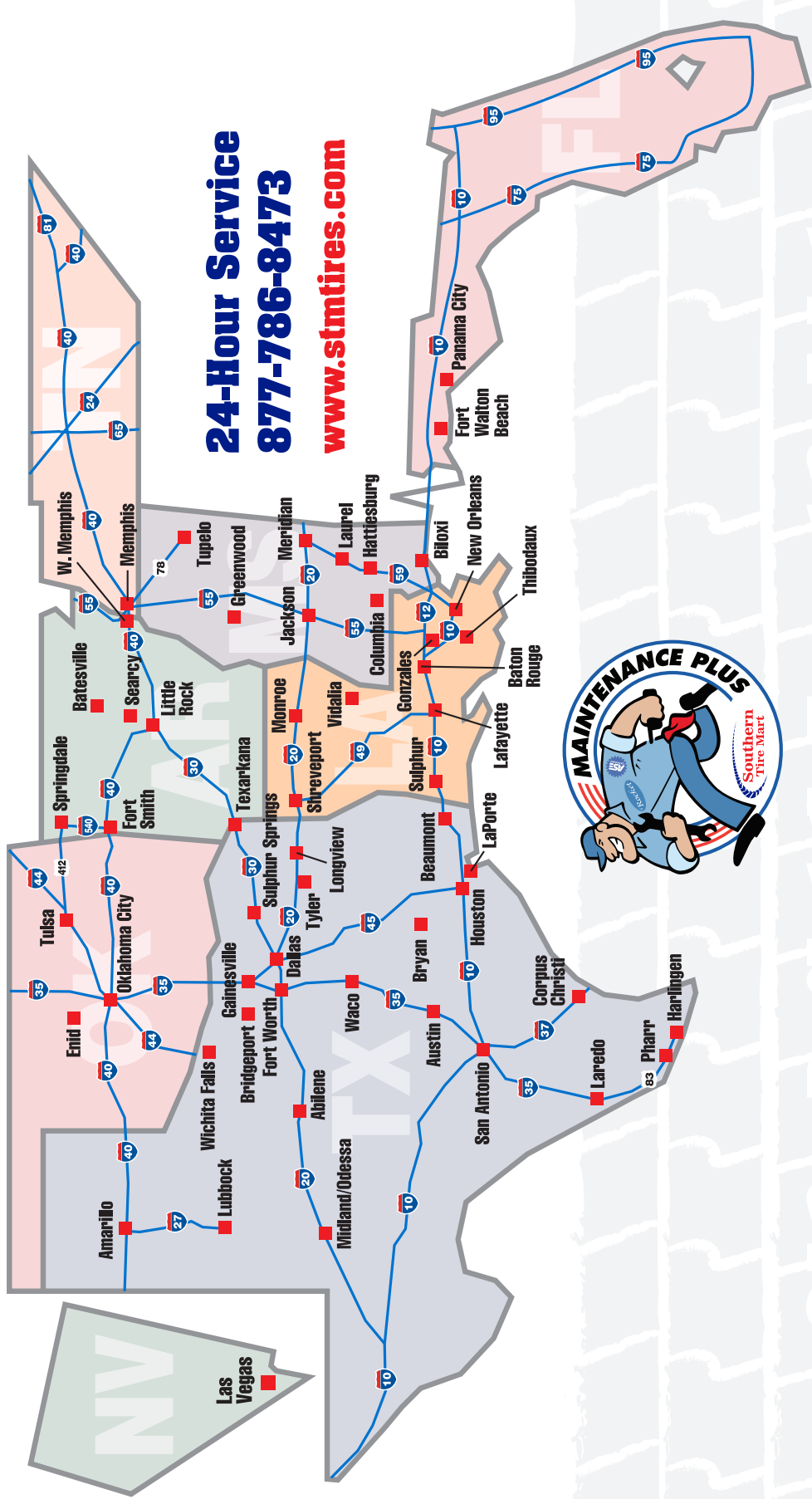
WICHITA FALLS

810 E. Scott, 76301
(940) 761-1616

Corporate Office - 529 Industrial Park Rd. - Columbia, MS 39429 - (601) 424 - 3200
After-Hours Service: 877-786-8473

Southern Tire Mart

Southern Tire Mart



Solutions Provider to the Transportation Industry

To contact Southern Tire Mart 24 Hour Customer Support
call 877 786 8473 or visit www.stmtires.com

