

SUNLINE®

PRICE LIST



PANEL SYSTEMS • BENCHING SYSTEMS • ACCESSORIES



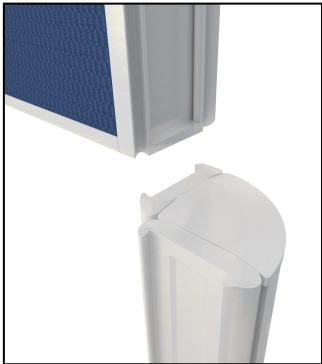
UPDATED: 8.14.23



- PANEL SYSTEMS
- BENCHING SYSTEMS
- ACCESSORIES

TABLE OF CONTENTS

Table of Contents	2
Sunline Signature Cubicles	4
Sunline Select Cubicles	10
Sunline Benching Systems	14
Contact Us	16



See how easy the system is to build!





SUNLINE SIGNATURE PRICE LIST



PANELS

54% Discount off List
Based on Order Size of
\$1 - \$130,000 List Price;
Over \$130,001 - Negotiated Discount

CATEGORY	DESCRIPTION	PART NUMBER	LIST PRICE	MS PRICE
PANEL: Tier 1	Panel, 560H x 600W, Light Grey (In Stock) (22"H x 24"W)	PA-656BY20	\$167.58	\$77.09
PANEL: Tier 1	Panel, 560H x 600W, Charcoal (22"H x 24"W)	PA-656BY22	\$486.18	\$223.64
PANEL: Tier 1	Panel, 710H x 600W, Light Grey (In Stock) (28"H x 24"W)	PA-671BY20	\$204.86	\$94.24
PANEL: Tier 1	Panel, 710H x 600W, Charcoal (28"H x 24"W)	PA-671BY22	\$523.46	\$240.79
PANEL: Tier 1	Panel, 560H x 900W, Light Grey (In Stock) (22"H x 36"W)	PA-956BY20	\$235.98	\$108.55
PANEL: Tier 1	Panel, 560H x 900W, Charcoal (22"H x 36"W)	PA-956BY22	\$554.58	\$255.11
PANEL: Tier 1	Panel, 710H x 900W, Light Grey (In Stock) (28"H x 36"W)	PA-971BY20	\$273.15	\$125.65
PANEL: Tier 1	Panel, 710H x 900W, Charcoal (28"H x 36"W)	PA-971BY22	\$591.75	\$272.20
PANEL: Tier 1	Panel, 560H x 1000W, Light Grey (In Stock) (22"H x 39"W)	PA-10-56BY20	\$254.56	\$117.10
PANEL: Tier 1	Panel, 560H x 1000W, Charcoal (22"H x 39"W)	PA-10-56BY22	\$573.16	\$263.65
PANEL: Tier 1	Panel, 710H x 1000W, Light Grey (In Stock) (28"H x 39"W)	PA-10-71BY20	\$298.00	\$137.08
PANEL: Tier 1	Panel, 710H x 1000W, Charcoal (28"H x 39"W)	PA-10-71BY22	\$616.60	\$283.63
PANEL: Tier 1	Panel, 560H x 1200W, Light Grey (In Stock) (22"H x 48"W)	PA-12-56-BY20	\$298.00	\$137.08
PANEL: Tier 1	Panel, 560H x 1200W, Charcoal (22"H x 48"W)	PA-12-56-BY22	\$616.60	\$283.63
PANEL: Tier 1	Panel, 710H x 1200W, Light Grey (In Stock) (28"H x 48"W)	PA-12-71-BY20	\$347.70	\$159.94
PANEL: Tier 1	Panel, 710H x 1200W, Charcoal (28"H x 48"W)	PA-12-71-BY22	\$666.30	\$306.50
CATEGORY	DESCRIPTION	PART NUMBER	LIST PRICE	MS PRICE
PANEL: Tier 2, 3, 4, 5	Panel, 300H x 600W, Light Grey (In Stock) (12"H x 24"W)	PA-63BY20	\$105.56	\$48.56
PANEL: Tier 2, 3, 4, 5	Panel, 300H x 600W, Charcoal accent (In Stock) (12"H x 24"W)	PA-63BY22	\$105.56	\$48.56
PANEL: Tier 2, 3, 4, 5	Panel, 300H x 600W, Blue accent (In Stock) (12"H x 24"W)	PA-63BY25	\$105.56	\$48.56
PANEL: Tier 2, 3, 4, 5	Panel, 300H x 600W, Orange accent (12"H x 24"W)	PA-63BY01	\$105.56	\$48.56
PANEL: Tier 2, 3, 4, 5	Panel, 300H x 600W, ONGREEN accent (12"H x 24"W)	PA-63-ONGREEN	\$105.56	\$48.56
PANEL: Tier 2, 3, 4, 5	Panel, 300H x 600W, Red accent (12"H x 24"W)	PA-63RED	\$105.56	\$48.56
PANEL: Tier 2, 3, 4, 5	Panel, 300H x 600W, Clear Glass (In Stock) (12"H x 24"W)	PA-63GLS	\$138.59	\$63.75
PANEL: Tier 2, 3, 4, 5	Panel, 300H x 600W, Frosted Glass (12"H x 24"W)	PA-63GLS-FRO	\$350.99	\$161.46
PANEL: Tier 2, 3, 4, 5	Panel, 450H x 600W, Light Grey (In Stock) (18"H x 24"W)	PA-645BY20	\$136.57	\$62.82
PANEL: Tier 2, 3, 4, 5	Panel, 450H x 600W, Clear Glass (In Stock) (18"H x 24"W)	PA-645GLS	\$208.90	\$96.09
PANEL: Tier 2, 3, 4, 5	Panel, 450H x 600W, Frosted Glass (18"H x 24"W)	PA-645GLS-FRO	\$442.54	\$203.57
CATEGORY	DESCRIPTION	PART NUMBER	LIST PRICE	MS PRICE
PANEL: Tier 2, 3, 4, 5	Panel, 300H x 900W, Light Grey (In Stock) (12"H x 36"W)	PA-93BY20	\$155.26	\$71.42
PANEL: Tier 2, 3, 4, 5	Panel, 300H x 900W, Charcoal accent (In Stock) (12"H x 36"W)	PA-93BY22	\$155.26	\$71.42
PANEL: Tier 2, 3, 4, 5	Panel, 300H x 900W, Blue accent (In Stock) (12"H x 36"W)	PA-93BY25	\$155.26	\$71.42
PANEL: Tier 2, 3, 4, 5	Panel, 300H x 900W, Orange accent (12"H x 36"W)	PA-93BY01	\$155.26	\$71.42
PANEL: Tier 2, 3, 4, 5	Panel, 300H x 900W, ONGREEN accent (12"H x 36"W)	PA-93-ONGREEN	\$155.26	\$71.42
PANEL: Tier 2, 3, 4, 5	Panel, 300H x 900W, Red accent (12"H x 36"W)	PA-93RED	\$155.26	\$71.42
PANEL: Tier 2, 3, 4, 5	Panel, 300H x 900W, Clear Glass (In Stock) (12"H x 36"W)	PA-93GLS	\$257.00	\$118.22
PANEL: Tier 2, 3, 4, 5	Panel, 300H x 900W, Frosted Glass (12"H x 36"W)	PA-93GLS-FRO	\$469.40	\$215.93
PANEL: Tier 2, 3, 4, 5	Panel, 300H x 900W, Whiteboard with Tool Rail (12"H x 36"W)	PA-93WB	\$204.86	\$94.24
PANEL: Tier 2, 3, 4, 5	Panel, 300H x 900W, Whiteboard, No Tool Rail (12"H x 36"W)	PA-93WB-NOTR	\$363.31	\$167.12
PANEL: Tier 2, 3	Panel, 600H x 900W, Whiteboard, No Tool Rail (24"H x 36"W)	PA-96WB-NOTR	\$628.81	\$289.25
PANEL: Tier 2, 3, 4, 5	Panel, 450H x 900W, Light Grey (In Stock) (18"H x 36"W)	PA-945BY20	\$155.26	\$71.42
PANEL: Tier 2, 3, 4, 5	Panel, 450H x 900W, Clear Glass (In Stock) (18"H x 36"W)	PA-945GLS	\$155.26	\$71.42
PANEL: Tier 2, 3, 4, 5	Panel, 450H x 900W, Frosted Glass (18"H x 36"W)	PA-945GLS-FRO	\$155.26	\$71.42
CATEGORY	DESCRIPTION	PART NUMBER	LIST PRICE	MS PRICE
PANEL: Tier 2, 3, 4, 5	Panel, 300H x 1000W, Light Grey (In Stock) (12"H x 39"W)	PA-10-38Y20	\$180.01	\$82.80
PANEL: Tier 2, 3, 4, 5	Panel, 300H x 1000H, Charcoal accent (In Stock) (12"H x 39"W)	PA-10-38Y22	\$180.01	\$82.80
PANEL: Tier 2, 3, 4, 5	Panel, 300H x 1000H, Blue accent (In Stock) (12"H x 39"W)	PA-10-38Y25	\$180.01	\$82.80
PANEL: Tier 2, 3, 4, 5	Panel, 300H x 1000W, Orange accent (12"H x 39"W)	PA-10-38Y01	\$180.01	\$82.80
PANEL: Tier 2, 3, 4, 5	Panel, 300H x 1000W, ONGREEN accent (12"H x 39"W)	PA-10-3ONGREEN	\$180.01	\$82.80
PANEL: Tier 2, 3, 4, 5	Panel, 300H x 1000W, Red accent (12"H x 39"W)	PA-10-3RED	\$180.01	\$82.80
PANEL: Tier 2, 3, 4, 5	Panel, 300H x 1000W, Clear Glass (In Stock) (12"H x 39"W)	PA-10-3GLS	\$289.29	\$133.07
PANEL: Tier 2, 3, 4, 5	Panel, 300H x 1000W, Frosted Glass (12"H x 39"W)	PA-10-3GLS-FRO	\$544.17	\$250.32
PANEL: Tier 2, 3, 4, 5	Panel, 450H x 1000W, Light Grey (In Stock) (18"H x 39"W)	PA-10-45-BY20	\$298.00	\$137.08
PANEL: Tier 2, 3, 4, 5	Panel, 450H x 1000W, Clear Glass (In Stock) (18"H x 39"W)	PA-10-45GLS	\$235.98	\$108.55
PANEL: Tier 2, 3, 4, 5	Panel, 450H x 1000W, Frosted Glass (18"H x 39"W)	PA-10-45GLS-FRO	\$441.58	\$203.13

RACEWAYS

54% Discount off List
Based on Order Size of
\$1 - \$130,000 List Price;
Over \$130,001 - Negotiated Discount

CATEGORY	DESCRIPTION	PART NUMBER	LIST PRICE	MS PRICE
RACEWAY	Raceway, 150H x 600W, No Power Mod, No Cut-Outs (6"H x 24"W)	RW-615-0	\$105.56	\$48.56
RACEWAY	Raceway, 150H x 600W, Power Mod, No Cut-Outs (6"H x 24"W)	RW-615-0	\$105.56	\$48.56
RACEWAY	Raceway, 150H x 600W, Power Mod, 1 Side Cut-Outs (6"H x 24"W)	RW-615-1-P	\$105.56	\$48.56
RACEWAY	Raceway, 150H x 600W, Power Mod, 2 Sides Cut-Outs (6"H x 24"W)	RW-615-2-P	\$105.56	\$48.56
RACEWAY	Raceway, 150H x 900W, No Power Mod, No Cut-Outs (6"H x 36"W)	RW-915-0	\$142.84	\$65.71
RACEWAY	Raceway, 150H x 900W, Power Mod, No Cut-Outs (6"H x 36"W)	RW-915-0	\$142.84	\$65.71
RACEWAY	Raceway, 150H x 900W, Power Mod, 1 Side Cut-Outs (6"H x 36"W)	RW-915-1-P	\$142.84	\$65.71
RACEWAY	Raceway, 150H x 900W, Power Mod, 2 Sides Cut-Outs (6"H x 36"W)	RW-915-2-P	\$142.84	\$65.71
RACEWAY	Raceway, 150H x 1000W, No Power Mod, No Cut-Outs (6"H x 39"W)	RW-10-15-2-P	\$155.26	\$71.42
RACEWAY	Raceway, 150H x 1000W, Power Mod, No Cut-Outs (6"H x 39"W)	RW-10-15-2-P	\$155.26	\$71.42
RACEWAY	Raceway, 150H x 1000W, Power Mod, 1 Sides Cut-Outs (6"H x 39"W)	RW-10-15-2-P	\$155.26	\$71.42
RACEWAY	Raceway, 150H x 1000W, Power Mod, 2 Sides Cut-Outs (6"H x 39"W)	RW-10-15-2-P	\$155.26	\$71.42
RACEWAY	Raceway, 150H x 1200W, No Power Mod, No Cut-Outs (6"H x 48"W)	RW-12-15-0	\$192.43	\$88.52
RACEWAY	Raceway, 150H x 1200W, Power Mod, No Cut-Outs (6"H x 48"W)	RW-12-15-0	\$192.43	\$88.52
RACEWAY	Raceway, 150H x 1200W, Power Mod, 1 Side Cut-Outs (6"H x 48"W)	RW-12-15-2-P	\$192.43	\$88.52
RACEWAY	Raceway, 150H x 1200W, Power Mod, 2 Sides Cut-Outs (6"H x 48"W)	RW-12-15-2-P	\$192.43	\$88.52

POSTS

54% Discount off List
Based on Order Size of
\$1 - \$130,000 List Price;
Over \$130,001 - Negotiated Discount

CATEGORY	DESCRIPTION	PART NUMBER	LIST PRICE	AZ PRICE
POSTS: 1050H (41H)	End Post, 1050H (41"H)	EP-1050	\$58.94	\$27.11
POSTS: 1050H (41H)	I-Shaped Post, 1050H (41"H)	IP-1050	\$80.71	\$37.13
POSTS: 1050H (41H)	L-Shaped Post, 1050H (41"H)	LP-1050	\$175.12	\$80.56
POSTS: 1050H (41H)	T-Shaped Post, 1050H (41"H)	TP-1050	\$260.72	\$119.93
POSTS: 1050H (41H)	X-Shaped Post, 1050H (41"H)	XP-1050	\$322.85	\$148.51
CATEGORY	DESCRIPTION	PART NUMBER	LIST PRICE	AZ PRICE
POSTS: 1350H (53H)	End Post, 1350H (53")	EP-1350	\$68.29	\$31.41
POSTS: 1350H (53H)	I-Shaped Post, 1350H (53")	IP-1350	\$105.56	\$48.56
POSTS: 1350H (53H)	L-Shaped Post, 1350H (53")	LP-1350	\$248.30	\$114.22
POSTS: 1350H (53H)	T-Shaped Post, 1350H (53")	TP-1350	\$335.27	\$154.23
POSTS: 1350H (53H)	X-Shaped Post, 1350H (53")	XP-1350	\$397.40	\$182.80
CATEGORY	DESCRIPTION	PART NUMBER	LIST PRICE	AZ PRICE
POSTS: 1650H (65H)	End Post, 1650H (65"H)	EP-1650	\$86.87	\$39.96
POSTS: 1650H (65H)	I-Shaped Post, 1650H (65"H)	IP-1650	\$124.15	\$57.11
POSTS: 1650H (65H)	L-Shaped Post, 1650H (65"H)	LP-1650	\$291.84	\$134.25
POSTS: 1650H (65H)	T-Shaped Post, 1650H (65"H)	TP-1650	\$391.13	\$179.92
POSTS: 1650H (65H)	X-Shaped Post, 1650H (65"H)	XP-1650	\$471.85	\$217.05
CATEGORY	DESCRIPTION	PART NUMBER	LIST PRICE	AZ PRICE
POSTS: 2100H (83H)	End Post, 2100H (83"H)	EP-2100	\$124.15	\$57.11
POSTS: 2100H (83H)	I-Shaped Post, 2100H (83"H)	IP-2100	\$136.57	\$62.82
POSTS: 2100H (83H)	L-Shaped Post, 2100H (83"H)	LP-2100	\$360.12	\$165.66
POSTS: 2100H (83H)	T-Shaped Post, 2100H (83"H)	TP-2100	\$496.70	\$228.48
POSTS: 2100H (83H)	X-Shaped Post, 2100H (83"H)	XP-2100	\$589.83	\$271.32
POSTS: 2100H (83H)	I-Shaped Large Post, 2100H (83"H)	BIG-POST	\$332.19	\$152.81
POSTS: 2100H (83H)	Bottom Support for Large I-Shaped Post	BIG-POST-BOTTOM	\$121.07	\$55.69
CATEGORY	DESCRIPTION	PART NUMBER	LIST PRICE	AZ PRICE
POSTS: 120 Degree	120 Degree Post, 1050H (41"H)	XP-1050	\$155.26	\$71.42
POSTS: 120 Degree	120 Degree Post, 1350H (53"H)	XP-1350	\$198.70	\$91.40
POSTS: 120 Degree	120 Degree Post, 1650H (65"H)	XP-1650	\$248.30	\$114.22
CATEGORY	DESCRIPTION	PART NUMBER	LIST PRICE	AZ PRICE
POSTS: Transition Covers	Post Transition Cover, 300H (12"H)	PC-300	\$6.16	\$2.83
POSTS: Transition Covers	Post Transition Cover, 600H (24"H)	PC-600	\$14.66	\$6.74
POSTS: Transition Covers	Post Transition Cover, 2100H (83"H)	PC-2100	\$48.64	\$22.37
POSTS: Transition Covers	Post Transition Top Cap	PC-TOPCAP	\$4.04	\$1.86

DOORS

54% Discount off List
Based on Order Size of
\$1 - \$130,000 List Price;
Over \$130,001 - Negotiated Discount

CATEGORY	DESCRIPTION	PART NUMBER	LIST PRICE	MS PRICE
DOORS	Sunline Sliding Door, 39"W x 65"H	AC-DOOR-SLIDE-1000-HB	\$2,194.41	\$1,009.43
DOORS	Clear Glass Door with Frame, 2100H x 1000W, Right (83"H x 39"W)	AC-DOOR-RIGHTIN-YSHNG	\$2,973.60	\$1,367.86
DOORS	Clear Glass Door with Frame, 2100H x 1000W, Left (83"H x 39"W)	AC-DOOR-LEFTIN-YSHNG	\$2,973.60	\$1,367.86
DOORS	Door Handle for Swing Door	AC-DOOR-HNDL-SQR	\$498.08	\$229.12
DOORS	I-Shaped Post for Doors/Wall Starts, 2100H (83"H)	AC-DOOR-IP-2100	\$136.57	\$62.82
DOORS	L-Shaped Post for Doors, 2100H (83"H)	AC-DOOR-LP-2100	\$136.57	\$62.82
DOORS	T-Shaped Post for Doors, 2100H (83"H)	AC-DOOR-TP-2100	\$496.70	\$228.48
DOORS	X-Shaped Post for Doors, 2100H (83"H)	AC-DOOR-XP-2100	\$496.70	\$228.48

ELECTRIC (UNIVERSAL)

54% Discount off List
Based on Order Size of
\$1 - \$130,000 List Price;
Over \$130,001 - Negotiated Discount

CATEGORY	DESCRIPTION	PART NUMBER	LIST PRICE	MS PRICE
ELECTRICAL: UNIVERSAL	Power Module, 24"	EL-P-24	\$99.83	\$45.92
ELECTRICAL: UNIVERSAL	Power Module, 36"	EL-P-36	\$131.37	\$60.43
ELECTRICAL: UNIVERSAL	Power Module, 40"	EL-P-40	\$203.69	\$93.70
ELECTRICAL: UNIVERSAL	Power Module, 48"	EL-P-48	\$203.69	\$93.70
CATEGORY	DESCRIPTION	PART NUMBER	LIST PRICE	MS PRICE
ELECTRICAL: UNIVERSAL	Pass Thru Jumper, 24"	EL-J-24	\$172.47	\$79.34
ELECTRICAL: UNIVERSAL	Pass Thru Jumper, 36"	EL-J-36	\$192.33	\$88.47
ELECTRICAL: UNIVERSAL	Pass Thru Jumper, 48"	EL-J-48	\$245.22	\$112.80
CATEGORY	DESCRIPTION	PART NUMBER	LIST PRICE	MS PRICE
ELECTRICAL: UNIVERSAL	Pass Thru Jumper, 24" Extended	EL-J-24E	\$177.57	\$81.68
ELECTRICAL: UNIVERSAL	Pass Thru Jumper, 36" Extended	EL-J-36E	\$208.26	\$95.80
ELECTRICAL: UNIVERSAL	Pass Thru Jumper, 48" Extended	EL-J-48E	\$272.62	\$125.40
CATEGORY	DESCRIPTION	PART NUMBER	LIST PRICE	MS PRICE
ELECTRICAL: UNIVERSAL	Festoon, 18.25"	EL-F-18	\$93.56	\$43.04
ELECTRICAL: UNIVERSAL	Festoon, 21.5"	EL-F-21	\$116.61	\$53.64
CATEGORY	DESCRIPTION	PART NUMBER	LIST PRICE	MS PRICE
ELECTRICAL: UNIVERSAL	Receptacle, Duplex, Outlet A	EL-R-OMC1	\$38.87	\$17.88
ELECTRICAL: UNIVERSAL	Receptacle, Duplex, Outlet B	EL-R-OMC2	\$38.87	\$17.88
ELECTRICAL: UNIVERSAL	Receptacle, Duplex, Outlet C	EL-R-OMC3	\$38.87	\$17.88
ELECTRICAL: UNIVERSAL	Receptacle, Duplex, Circuit Dedicated	EL-R-OMC4	\$38.87	\$17.88
CATEGORY	DESCRIPTION	PART NUMBER	LIST PRICE	MS PRICE
ELECTRICAL: UNIVERSAL	AO, Base Feed, 4 Circuit, 8 Wire	EL-B-PW48-R	\$454.43	\$209.04
ELECTRICAL: UNIVERSAL	AO, Base Feed, 4 Circuit, 8 Wire	EL-B-PW48-L	\$454.43	\$209.04
CATEGORY	DESCRIPTION	PART NUMBER	LIST PRICE	MS PRICE
ELECTRICAL: UNIVERSAL	AO, Ceiling Feed, 4 Circuit, 8 Wire	EL-B-CF48-C	\$521.55	\$239.91
ELECTRICAL: UNIVERSAL	Power Pole, 2"x2" (finish to match Sunon post)	EL-F-PP22	\$111.19	\$51.15
ELECTRICAL: UNIVERSAL	Power Pole, 3"x4" (finish to match Sunon post)	EL-F-PP34	\$255.62	\$117.59
ELECTRICAL: UNIVERSAL	Power Pole, 2"x2", Ceiling Collar	EL-F-PP-COLLAR-SLVR	\$12.74	\$5.86

WORKSURFACES (UNIVERSAL)

54% Discount off List
Based on Order Size of
\$1 - \$130,000 List Price;
Over \$130,001 - Negotiated Discount

CATEGORY	DESCRIPTION	PART NUMBER	LIST PRICE	MS PRICE
WORKSURFACE: UNIVERSAL	Worksurface, Corner, Grommet 900-595-900-595 (24"D x 36"W)	HG-900WHT-C	\$157.60	\$72.50
WORKSURFACE: UNIVERSAL	Worksurface, Straight, No Grommet, 597W x 595D (24"D x 24"W)	HG-600WHT-S	\$69.88	\$32.14
WORKSURFACE: UNIVERSAL	Worksurface, Straight, No Grommet, 897W x 595D (24"D x 36"W)	HG-900WHT-S	\$95.79	\$44.06
WORKSURFACE: UNIVERSAL	Worksurface, Straight, No Grommet, 997W x 595D (24"D x 39"W)	HG-1000-WHT-S-NGRM	\$113.74	\$52.32
WORKSURFACE: UNIVERSAL	Worksurface, Straight, No Grommet, 1197W x 595D (24"D x 48"W)	HG-1200-WHT-S-NGRM	\$109.92	\$50.56
WORKSURFACE: UNIVERSAL	Worksurface, Straight, Left Grommet, 1197W x 595D (24"D x 48"W)	HG-1200-WHT-S-LGRM	\$118.20	\$54.37
WORKSURFACE: UNIVERSAL	Worksurface, Straight, Center Grommet, 1197W x 595D (24"D x 48"W)	HG-1200-WHT-S-CGRM	\$118.20	\$54.37
WORKSURFACE: UNIVERSAL	Worksurface, Straight, No Grommet, 1497W x 595D (24"D x 60"W)	HG-1500-WHT-S-NGRM	\$128.29	\$59.01
WORKSURFACE: UNIVERSAL	Worksurface, Straight, Left Grommet, 1497W x 595D (24"D x 60"W)	HG-1500-WHT-S-LGRM	\$136.57	\$62.82
WORKSURFACE: UNIVERSAL	Worksurface, Straight, Center Grommet, 1497W x 595D (24"D x 60"W)	HG-1500-WHT-S-CGRM	\$136.57	\$62.82
WORKSURFACE: UNIVERSAL	Worksurface, Straight, No Grommet, 1797W x 595D (24"D x 72"W)	HG-1800-WHT-S-NGRM	\$154.31	\$70.98
WORKSURFACE: UNIVERSAL	Worksurface, Straight, 2 Corner Grommets, 1797W x 595D (24"D x 72"W)	HG-1800-WHT-S-YGRM	\$165.67	\$76.21
WORKSURFACE: UNIVERSAL	Worksurface, Straight, No Grommet, 897W x 750D (30"D x 36"W)	HG-750-900-WHT-S	\$141.78	\$65.22
WORKSURFACE: UNIVERSAL	Worksurface, Straight, No Grommet, 1497W x 750D (30"D x 60"W)	HG-750-1500-WHT-S	\$237.68	\$109.33
WORKSURFACE: UNIVERSAL	Worksurface, Straight, No Grommet, 1797W x 750D (30"D x 72"W)	HG-750-1800-WHT-S	\$267.84	\$123.20
WORKSURFACE: UNIVERSAL	Worksurface, Bullet-Shaped Peninsula Top, 1497W x 750D (30"D x 60"W)	HG-750-1500-WHT-BLT	\$243.52	\$112.02
WORKSURFACE: UNIVERSAL	Worksurface, Bullet-Shaped Peninsula Top, 1797W x 750D (30"D x 72"W)	HG-750-1800-WHT-BLT	\$274.21	\$126.14
CATEGORY	DESCRIPTION	PART NUMBER	LIST PRICE	MS PRICE
WORKSURFACE: UNIVERSAL	Transaction Top 350D x 1500W (14"D x 60"W)	TT-1500-WHT	\$125.95	\$57.94
WORKSURFACE: UNIVERSAL	Transaction Top 350D x 1800W (14"D x 72"W)	TT-1800-WHT	\$161.42	\$74.26
WORKSURFACE: UNIVERSAL	Bracket for Transaction Top	TT-BR	\$36.32	\$16.71

WORKSURFACE SUPPORTS

54% Discount off List
Based on Order Size of
\$1 - \$130,000 List Price;
Over \$130,001 - Negotiated Discount

CATEGORY	DESCRIPTION	PART NUMBER	LIST PRICE	MS PRICE
SUPPORTS: WORKSURFACE	Cantilever, Shared	WS-CANT	\$71.93	\$37.40
SUPPORTS: WORKSURFACE	Cantilever, Left	WS-CANT-L	\$61.65	\$32.06
SUPPORTS: WORKSURFACE	Cantilever, Right	WS-CANT-R	\$61.65	\$32.06
SUPPORTS: WORKSURFACE	Flat Plate	WS-FP	\$5.18	\$2.69
SUPPORTS: WORKSURFACE	Small Bracket	WS-BR	\$2.47	\$1.28
SUPPORTS: WORKSURFACE	Pole Leg	HG-PL-27	\$47.68	\$24.79

SIT-STAND WORKSURFACES (UNIVERSAL)

54% Discount off List
Based on Order Size of
\$1 - \$130,000 List Price;
Over \$130,001 - Negotiated Discount

CATEGORY	DESCRIPTION	PART NUMBER	LIST PRICE	MS PRICE
SIT-STAND WORKSURFACE: UNIVERSAL	Extended Corner Worksurface, Sit-Stand, Grommet, 1480-580 875-580 (22"D-36"D x 58"W)	HG-1480/875-WHT-C	\$186.81	\$85.93
SIT-STAND WORKSURFACE: UNIVERSAL	Extended Corner Worksurface, Sit-Stand, Corner, Grommet, 1780-580 875-580 (22"D-36"D x 70"W)	HG-1780/875-WHT-C	\$219.30	\$100.88
CATEGORY	DESCRIPTION	PART NUMBER	LIST PRICE	MS PRICE
SIT-STAND WORKSURFACE: UNIVERSAL	Worksurface, Straight for Sit-Stand, Grommet 1480W x 580D (58"W x 22"D)	HG-1480-WHT-S-YGRM	\$139.65	\$64.24
SIT-STAND WORKSURFACE: UNIVERSAL	Worksurface, Straight for Sit-Stand, No Grommet 1480W x 580D (58"W x 22"D)	HG-1480-WHT-S-NGRM	\$128.29	\$59.01
SIT-STAND WORKSURFACE: UNIVERSAL	Worksurface, Straight for Sit-Stand, Grommet, 1780W x 580D (70"W x 22"D)	HG-1780-WHT-S-YGRM	\$165.67	\$76.21
SIT-STAND WORKSURFACE: UNIVERSAL	Worksurface, Straight for Sit-Stand, No Grommet, 1780W x 580D (70"W x 22"D)	HG-1780-WHT-S-NGRM	\$154.31	\$70.98

SIT-STAND BASES (UNIVERSAL)

54% Discount off List
Based on Order Size of
\$1 - \$130,000 List Price;
Over \$130,001 - Negotiated Discount

CATEGORY	DESCRIPTION	PART NUMBER	LIST PRICE	MS PRICE
SIT-STAND BASE: UNIVERSAL	Sit-Stand Base for 1200W Surface, White (22"D x 46"W)	SS-2LEG-BASE-W	\$1,190.00	\$547.40
SIT-STAND BASE: UNIVERSAL	Sit-Stand Base for 1500W Surface, White (22"D x 58"W)	SS-2LEG-BASE-W	\$1,190.00	\$547.40
SIT-STAND BASE: UNIVERSAL	Sit-Stand Base for 1800W Surface, White (22"D x 70"W)	SS-2LEG-BASE-W	\$1,190.00	\$547.40

STORAGE (UNIVERSAL)

54% Discount off List
Based on Order Size of
\$1 - \$130,000 List Price;
Over \$130,001 - Negotiated Discount

CATEGORY	DESCRIPTION	PART NUMBER	LIST PRICE	MS PRICE
STORAGE: UNIVERSAL	Box/Box/File Pedestal, 550D x 396W (22D x 16W)	HG-BBF	\$495.42	\$227.89
STORAGE: UNIVERSAL	File/File Pedestal, 550D x 396W (22D x 16W)	HG-FF	\$560.31	\$257.74
STORAGE: UNIVERSAL	Lateral File, 2 Drawer, 550D x 760W (21.6D x 30W)	HG-2D-LAT	\$609.06	\$280.17
STORAGE: UNIVERSAL	LED Tasklight, Under Storage Mount	ST-WCAB-300R	\$1,008.90	\$464.09
STORAGE: UNIVERSAL	Plug for Tasklight	ST-WCAB-300L	\$1,008.90	\$464.09
STORAGE: UNIVERSAL		OH-TASKLIGHT	\$57.88	\$26.62
STORAGE: UNIVERSAL		OH-TASKLIGHT-PLUG	\$47.79	\$21.98

STORAGE (SIGNATURE ONLY)

54% Discount off List
Based on Order Size of
\$1 - \$130,000 List Price;
Over \$130,001 - Negotiated Discount

CATEGORY	DESCRIPTION	PART NUMBER	LIST PRICE	MS PRICE
STORAGE: SIGNATURE	Hanging Bookshelf, 850W (29.5"W)	SHLV-850WHT	\$232.37	\$106.89
STORAGE: SIGNATURE	Overhead Storage with Rolling Door, 900W (35.5"W)	ST-9441OH	\$610.65	\$280.90



SUNLINE SELECT PRICE LIST



PANELS

54% Discount off List
Based on Order Size of
\$1 - \$130,000 List Price;
Over \$130,001 - Negotiated Discount

CATEGORY	DESCRIPTION	PART NUMBER	LIST PRICE	MS PRICE
PANEL: 1350H (53H)	Panel, 600W x 1350H x T60mm (24"W x 53"H)	CLO-P-1350-6GLS	\$390.82	\$179.78
PANEL: 1350H (53H)	Panel, 600W x 1350H x T60mm, Powered (24"W x 53"H)	CLO-P-1350-6GLS	\$390.82	\$179.78
PANEL: 1350H (53H)	Panel, 900W x 1350H x T60mm (36"W x 53"H)	CLO-P-1350-9GLS	\$536.31	\$246.70
PANEL: 1350H (53H)	Panel, 900W x 1350H x T60mm, Powered (36"W x 53"H)	CLO-P-1350-9GLS	\$536.31	\$246.70
PANEL: 1350H (53H)	Panel, 1200W x 1350H x T60mm (48"W x 53"H)	CLO-P-1350-12GLS	\$671.18	\$308.74
PANEL: 1350H (53H)	Panel, 1200W x 1350H x T60mm, Powered (48"W x 53"H)	CLO-P-1350-12GLS	\$671.18	\$308.74
CATEGORY	DESCRIPTION	PART NUMBER	LIST PRICE	MS PRICE
PANEL: 1650 (65H)	Panel, 600W x 1650H x T60mm (24"W x 65"H)	CLO-P-1650-6GLS	\$437.54	\$201.27
PANEL: 1650 (65H)	Panel, 600W x 1650H x T60mm, Powered (24"W x 65"H)	CLO-P-1650-6GLS	\$437.54	\$201.27
PANEL: 1650 (65H)	Panel, 900W x 1650H x T60mm (36"W x 65"H)	CLO-P-1650-9GLS	\$594.72	\$273.57
PANEL: 1650 (65H)	Panel, 900W x 1650H x T60mm, Powered (36"W x 65"H)	CLO-P-1650-9GLS	\$594.72	\$273.57
PANEL: 1650 (65H)	Panel, 1200W x 1650H x T60mm (48"W x 65"H)	CLO-P-1650-12GLS	\$743.40	\$341.96
PANEL: 1650 (65H)	Panel, 1200W x 1650H x T60mm, Powered (48"W x 65"H)	CLO-P-1650-12GLS	\$743.40	\$341.96

POSTS

54% Discount off List
Based on Order Size of
\$1 - \$130,000 List Price;
Over \$130,001 - Negotiated Discount

CATEGORY	DESCRIPTION	PART NUMBER	LIST PRICE	MS PRICE
POSTS: 1350H (53H)	Vertical Filler Trim, 1350H (53"H)	CLO-I-1350-TRIM	\$12.43	\$5.72
POSTS: 1350H (53H)	Post, 2-Way, 1350H (53"H)	CLO-I-1350-2WAY	\$124.79	\$57.40
POSTS: 1350H (53H)	Post, 3-Way, 1350H (53"H)	CLO-I-1350-3WAY	\$121.49	\$55.89
POSTS: 1350H (53H)	Post, 4-Way, 1350H (53"H)	CLO-I-1350-4WAY	\$118.09	\$54.32
CATEGORY	DESCRIPTION	PART NUMBER	LIST PRICE	MS PRICE
POSTS: 1650H (65H)	Vertical Filler Trim, 1650H (65"H)	CLO-I-1650-TRIM	\$15.19	\$6.99
POSTS: 1650H (65H)	Post, 2-Way, 1650H (65"H)	CLO-I-1650-2WAY	\$152.61	\$70.20
POSTS: 1650H (65H)	Post, 3-Way, 1650H (65"H)	CLO-I-1650-3WAY	\$149.42	\$68.73
POSTS: 1650H (65H)	Post, 4-Way, 1650H (65"H)	CLO-I-1650-4WAY	\$146.34	\$67.32

ELECTRIC (UNIVERSAL)

54% Discount off List
Based on Order Size of
\$1 - \$130,000 List Price;
Over \$130,001 - Negotiated Discount

<u>CATEGORY</u>	<u>DESCRIPTION</u>	<u>PART NUMBER</u>	<u>LIST PRICE</u>	<u>MS PRICE</u>
ELECTRICAL: UNIVERSAL	Power Module, 24"	EL-P-24	\$99.83	\$45.92
ELECTRICAL: UNIVERSAL	Power Module, 36"	EL-P-36	\$131.37	\$60.43
ELECTRICAL: UNIVERSAL	Power Module, 40"	EL-P-40	\$203.69	\$93.70
ELECTRICAL: UNIVERSAL	Power Module, 48"	EL-P-48	\$203.69	\$93.70
<u>CATEGORY</u>	<u>DESCRIPTION</u>	<u>PART NUMBER</u>	<u>LIST PRICE</u>	<u>MS PRICE</u>
ELECTRICAL: UNIVERSAL	Pass Thru Jumper, 24"	EL-J-24	\$172.47	\$79.34
ELECTRICAL: UNIVERSAL	Pass Thru Jumper, 36"	EL-J-36	\$192.33	\$88.47
ELECTRICAL: UNIVERSAL	Pass Thru Jumper, 48"	EL-J-48	\$245.22	\$112.80
<u>CATEGORY</u>	<u>DESCRIPTION</u>	<u>PART NUMBER</u>	<u>LIST PRICE</u>	<u>MS PRICE</u>
ELECTRICAL: UNIVERSAL	Pass Thru Jumper, 24" Extended	EL-J-24E	\$177.57	\$81.68
ELECTRICAL: UNIVERSAL	Pass Thru Jumper, 36" Extended	EL-J-36E	\$208.26	\$95.80
ELECTRICAL: UNIVERSAL	Pass Thru Jumper, 48" Extended	EL-J-48E	\$272.62	\$125.40
<u>CATEGORY</u>	<u>DESCRIPTION</u>	<u>PART NUMBER</u>	<u>LIST PRICE</u>	<u>MS PRICE</u>
ELECTRICAL: UNIVERSAL	Festoon, 18.25"	EL-F-18	\$93.56	\$43.04
ELECTRICAL: UNIVERSAL	Festoon, 21.5"	EL-F-21	\$116.61	\$53.64
<u>CATEGORY</u>	<u>DESCRIPTION</u>	<u>PART NUMBER</u>	<u>LIST PRICE</u>	<u>MS PRICE</u>
ELECTRICAL: UNIVERSAL	Receptacle, Duplex, Outlet A	EL-R-OMC1	\$38.87	\$17.88
ELECTRICAL: UNIVERSAL	Receptacle, Duplex, Outlet B	EL-R-OMC2	\$38.87	\$17.88
ELECTRICAL: UNIVERSAL	Receptacle, Duplex, Outlet C	EL-R-OMC3	\$38.87	\$17.88
ELECTRICAL: UNIVERSAL	Receptacle, Duplex, Circuit Dedicated	EL-R-OMC4	\$38.87	\$17.88
<u>CATEGORY</u>	<u>DESCRIPTION</u>	<u>PART NUMBER</u>	<u>LIST PRICE</u>	<u>MS PRICE</u>
ELECTRICAL: UNIVERSAL	AO, Base Feed, 4 Circuit, 8 Wire	EL-B-PW48-R	\$454.43	\$209.04
ELECTRICAL: UNIVERSAL	AO, Base Feed, 4 Circuit, 8 Wire	EL-B-PW48-L	\$454.43	\$209.04
<u>CATEGORY</u>	<u>DESCRIPTION</u>	<u>PART NUMBER</u>	<u>LIST PRICE</u>	<u>MS PRICE</u>
ELECTRICAL: UNIVERSAL	AO, Ceiling Feed, 4 Circuit, 8 Wire	EL-B-CF48-C	\$521.55	\$239.91
ELECTRICAL: UNIVERSAL	Power Pole, 2"x2" (finish to match Sunon post)	EL-F-PP22	\$111.19	\$51.15
ELECTRICAL: UNIVERSAL	Power Pole, 3"x4" (finish to match Sunon post)	EL-F-PP34	\$255.62	\$117.59
ELECTRICAL: UNIVERSAL	Power Pole, 2"x2", Ceiling Collar	EL-F-PP-COLLAR-SLVR	\$12.74	\$5.86

WORKSURFACES (UNIVERSAL)

54% Discount off List
Based on Order Size of
\$1 - \$130,000 List Price;
Over \$130,001 - Negotiated Discount

CATEGORY	DESCRIPTION	PART NUMBER	LIST PRICE	MS PRICE
WORKSURFACE: UNIVERSAL	Worksurface, Corner, Grommet 900-595-900-595 (24"D x 36"W)	HG-900WHT-C	\$157.60	\$72.50
WORKSURFACE: UNIVERSAL	Worksurface, Straight, No Grommet, 597W x 595D (24"D x 24"W)	HG-600WHT-S	\$69.88	\$32.14
WORKSURFACE: UNIVERSAL	Worksurface, Straight, No Grommet, 897W x 595D (24"D x 36"W)	HG-900WHT-S	\$95.79	\$44.06
WORKSURFACE: UNIVERSAL	Worksurface, Straight, No Grommet, 997W x 595D (24"D x 39"W)	HG-1000-WHT-S-NGRM	\$113.74	\$52.32
WORKSURFACE: UNIVERSAL	Worksurface, Straight, No Grommet, 1197W x 595D (24"D x 48"W)	HG-1200-WHT-S-NGRM	\$109.92	\$50.56
WORKSURFACE: UNIVERSAL	Worksurface, Straight, Left Grommet, 1197W x 595D (24"D x 48"W)	HG-1200-WHT-S-LGRM	\$118.20	\$54.37
WORKSURFACE: UNIVERSAL	Worksurface, Straight, Center Grommet, 1197W x 595D (24"D x 48"W)	HG-1200-WHT-S-CGRM	\$118.20	\$54.37
WORKSURFACE: UNIVERSAL	Worksurface, Straight, No Grommet, 1497W x 595D (24"D x 60"W)	HG-1500-WHT-S-NGRM	\$128.29	\$59.01
WORKSURFACE: UNIVERSAL	Worksurface, Straight, Left Grommet, 1497W x 595D (24"D x 60"W)	HG-1500-WHT-S-LGRM	\$136.57	\$62.82
WORKSURFACE: UNIVERSAL	Worksurface, Straight, Center Grommet, 1497W x 595D (24"D x 60"W)	HG-1500-WHT-S-CGRM	\$136.57	\$62.82
WORKSURFACE: UNIVERSAL	Worksurface, Straight, No Grommet, 1797W x 595D (24"D x 72"W)	HG-1800-WHT-S-NGRM	\$154.31	\$70.98
WORKSURFACE: UNIVERSAL	Worksurface, Straight, 2 Corner Grommets, 1797W x 595D (24"D x 72"W)	HG-1800-WHT-S-YGRM	\$165.67	\$76.21
WORKSURFACE: UNIVERSAL	Worksurface, Straight, No Grommet, 897W x 750D (30"D x 36"W)	HG-750-900-WHT-S	\$141.78	\$65.22
WORKSURFACE: UNIVERSAL	Worksurface, Straight, No Grommet, 1497W x 750D (30"D x 60"W)	HG-750-1500-WHT-S	\$237.68	\$109.33
WORKSURFACE: UNIVERSAL	Worksurface, Straight, No Grommet, 1797W x 750D (30"D x 72"W)	HG-750-1800-WHT-S	\$267.84	\$123.20
WORKSURFACE: UNIVERSAL	Worksurface, Bullet-Shaped Peninsula Top, 1497W x 750D (30"D x 60"W)	HG-750-1500-WHT-BLT	\$243.52	\$112.02
WORKSURFACE: UNIVERSAL	Worksurface, Bullet-Shaped Peninsula Top, 1797W x 750D (30"D x 72"W)	HG-750-1800-WHT-BLT	\$274.21	\$126.14
CATEGORY	DESCRIPTION	PART NUMBER	LIST PRICE	MS PRICE
WORKSURFACE: UNIVERSAL	Transaction Top 350D x 1500W (14"D x 60"W)	TT-1500-WHT	\$125.95	\$57.94
WORKSURFACE: UNIVERSAL	Transaction Top 350D x 1800W (14"D x 72"W)	TT-1800-WHT	\$161.42	\$74.26
WORKSURFACE: UNIVERSAL	Bracket for Transaction Top	TT-BR	\$36.32	\$16.71

WORKSURFACE SUPPORTS

54% Discount off List
Based on Order Size of
\$1 - \$130,000 List Price;
Over \$130,001 - Negotiated Discount

CATEGORY	DESCRIPTION	PART NUMBER	LIST PRICE	MS PRICE
SUPPORTS: WORKSURFACE	Cantilever, Left	CLO-S-CANT-L	\$14.12	\$6.50
SUPPORTS: WORKSURFACE	Cantilever, Right	CLO-S-CANT-R	\$14.12	\$6.50
SUPPORTS: WORKSURFACE	Surface Small Bracket	CLO-S-BR	\$0.74	\$0.34
SUPPORTS: WORKSURFACE	Flat Plate	WS-FP	\$6.69	\$3.08
SUPPORTS: WORKSURFACE	Pole Leg	HG-PL-27	\$61.60	\$28.33
SUPPORTS: WORKSURFACE	End Support Panel	CLO-580-EPANEL	\$126.59	\$58.23

SIT-STAND WORKSURFACES (UNIVERSAL)

54% Discount off List
Based on Order Size of
\$1 - \$130,000 List Price;
Over \$130,001 - Negotiated Discount

CATEGORY	DESCRIPTION	PART NUMBER	LIST PRICE	MS PRICE
SIT-STAND WORKSURFACE: UNIVERSAL	Extended Corner Worksurface, Sit-Stand, Grommet, 1480-580 875-580 (22"D-36"D x 58"W)	HG-1480/875-WHT-C	\$186.81	\$85.93
SIT-STAND WORKSURFACE: UNIVERSAL	Extended Corner Worksurface, Sit-Stand, Corner, Grommet, 1780-580 875-580 (22"D-36"D x 70"W)	HG-1780/875-WHT-C	\$219.30	\$100.88
CATEGORY	DESCRIPTION	PART NUMBER	LIST PRICE	MS PRICE
SIT-STAND WORKSURFACE: UNIVERSAL	Worksurface, Straight for Sit-Stand, Grommet 1480W x 580D (58"W x 22"D)	HG-1480-WHT-S-YGRM	\$139.65	\$64.24
SIT-STAND WORKSURFACE: UNIVERSAL	Worksurface, Straight for Sit-Stand, No Grommet 1480W x 580D (58"W x 22"D)	HG-1480-WHT-S-NGRM	\$128.29	\$59.01
SIT-STAND WORKSURFACE: UNIVERSAL	Worksurface, Straight for Sit-Stand, Grommet, 1780W x 580D (70"W x 22"D)	HG-1780-WHT-S-YGRM	\$165.67	\$76.21
SIT-STAND WORKSURFACE: UNIVERSAL	Worksurface, Straight for Sit-Stand, No Grommet, 1780W x 580D (70"W x 22"D)	HG-1780-WHT-S-NGRM	\$154.31	\$70.98

SIT-STAND BASES (UNIVERSAL)

54% Discount off List
Based on Order Size of
\$1 - \$130,000 List Price;
Over \$130,001 - Negotiated Discount

CATEGORY	DESCRIPTION	PART NUMBER	LIST PRICE	MS PRICE
SIT-STAND BASE: UNIVERSAL	Sit-Stand Base for 1200W Surface, White (22"D x 46"W)	SS-2LEG-BASE-W	\$1,190.00	\$547.40
SIT-STAND BASE: UNIVERSAL	Sit-Stand Base for 1500W Surface, White (22"D x 58"W)	SS-2LEG-BASE-W	\$1,190.00	\$547.40
SIT-STAND BASE: UNIVERSAL	Sit-Stand Base for 1800W Surface, White (22"D x 70"W)	SS-2LEG-BASE-W	\$1,190.00	\$547.40

STORAGE (UNIVERSAL)

54% Discount off List
Based on Order Size of
\$1 - \$130,000 List Price;
Over \$130,001 - Negotiated Discount

CATEGORY	DESCRIPTION	PART NUMBER	LIST PRICE	MS PRICE
STORAGE: UNIVERSAL	Box/Box/File Pedestal, 550D x 396W (22D x 16W)	HG-BBF	\$495.42	\$227.89
STORAGE: UNIVERSAL	File/File Pedestal, 550D x 396W (22D x 16W)	HG-FF	\$560.31	\$257.74
STORAGE: UNIVERSAL	Lateral File, 2 Drawer, 550D x 760W (21.6D x 30W)	HG-2D-LAT	\$609.06	\$280.17
STORAGE: UNIVERSAL	Mobile Box/File Pedestal, 550D x 397W (21.6D x 15.6W)	HG-MBL-BF	\$546.93	\$251.59
STORAGE: UNIVERSAL	BY20 Cushion Top for Mobile Box/File Pedestal	HG-MBL-BF-CUSH-BY20	\$165.67	\$76.21
STORAGE: UNIVERSAL	BY22 Cushion Top for Mobile Box/File Pedestal	HG-MBL-BF-CUSH-BY22	\$165.67	\$76.21
STORAGE: UNIVERSAL	BY25 Cushion Top for Mobile Box/File Pedestal	HG-MBL-BF-CUSH-BY25	\$165.67	\$76.21
STORAGE: UNIVERSAL	Wardrobe Tower wCoat Rod, 595D x 297W x 1350H (24D x 12W x 53H), Right	ST-WCAB-300R	\$1,008.90	\$464.09
STORAGE: UNIVERSAL	Wardrobe Tower wCoat Rod, 595D x 297W x 1350H (24D x 12W x 53H), Left	ST-WCAB-300L	\$1,008.90	\$464.09
STORAGE: UNIVERSAL	LED Tasklight, Under Storage Mount	OH-TASKLIGHT	\$57.88	\$26.62
STORAGE: UNIVERSAL	Plug for Tasklight	OH-TASKLIGHT-PLUG	\$47.79	\$21.98

STORAGE (SELECT ONLY)

54% Discount off List
Based on Order Size of
\$1 - \$130,000 List Price;
Over \$130,001 - Negotiated Discount

CATEGORY	DESCRIPTION	PART NUMBER	LIST PRICE	MS PRICE
STORAGE: SELECT	Select Hanging Bookshelf, 850W (29.5"W)	CLO-SHLV-900WHT	\$123.62	\$56.86
STORAGE: SELECT	Select Bookshelf Bracket, Double (for Shelf)	CLO-A-OH-DBL-BRKT	\$143.37	\$65.95
STORAGE: SELECT	Select Overhead (Single), 900W (36")	CLO-A-OH-900	\$696.67	\$320.47
STORAGE: SELECT	Select Overhead Bracket, Double	CLO-A-OH-DBL-BRKT	\$286.74	\$131.90

SUNLINE®

SUNLINE BENCHING PRICE LIST



BENCHING

54% Discount off List
Based on Order Size of
\$1 - \$130,000 List Price;
Over \$130,001 - Negotiated Discount

CATEGORY	DESCRIPTION	PART NUMBER	LIST PRICE	MS PRICE
BENCHING--HGT ADJUSTABLE	Back-to-Back Height Adjustable Desk, 55W x 69D x 28-49H, (3-Stage Base)	MG.DZZ50-2.175137 (Base)	\$4,587.84	\$2,110.41
	(2) Worksurfaces, 55W x 29.5D	MG.DZZ61-2.140075	\$764.64	\$351.73
	Dividing Screen, 50W x 31.5H	MG.DZZ23-2.128080	\$467.28	\$214.95
BENCHING--HGT ADJUSTABLE	3-Station Height Adjustable Desk, 55W x 69D x 28-49H, (3-Stage Base)	DZZ55-2.155154 (Base)	\$4,587.84	\$2,110.41
	(3) Worksurfaces, 55W x 29.5D	MG.DZZ61-2.140075	\$1,146.96	\$527.60
	(3) Dividing Screens, 50W x 31.5H	MG.DZZ23-2.128080	\$1,401.84	\$644.85
BENCHING--HGT ADJUSTABLE	(1) Independent Power Beam For stand-alone alignment, with 72" work surface	DZZ55-2.155154 (Beam)	\$1,486.80	\$683.93
	(2) Height Adjustable Desk, 68W x 26D x 28-49H, (3-Stage Base)	DZZ67-2.175068	\$3,801.96	\$1,748.90
	(2) Worksurfaces, 70W x 29.5D	MG.DZZ61-2.180075	\$934.56	\$429.90
	(1) Dividing Screens, 62W x 31.5H	MG.DZZ23-2.158080	\$552.24	\$254.03

CONTACT

- **Contact us today to learn more about Sunline®**
- **Send us your floorplan so we can give you an optimized complimentary floor plan design**
- **Get a free quote within 24-hours**
- **Financing options available – please inquire**



HEADQUARTERS & SHOWROOM:

313 W 4th Street
Bridgeport, PA 19405

HOURS:

- M–F 8:30 am – 6:00 pm EST
- Weekends by appointment
- 24/7 Sales Availability
- Call us anytime to discuss your furniture needs!



EMAIL: sales@sunlineoffice.com

PHONE: 610.937.4897

WEB: sunlineoffice.com

SUNLINE®

IT'S
SUNLINE
TIME!

