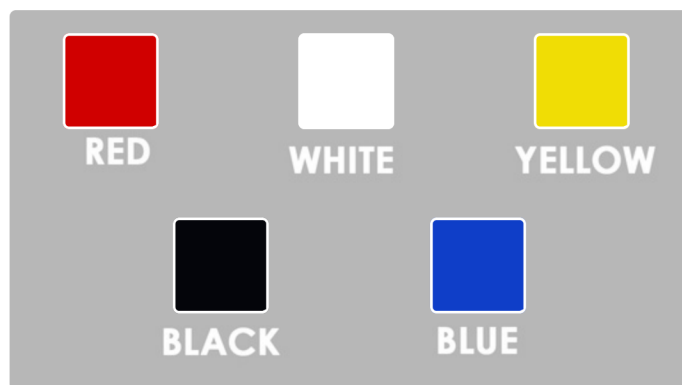




TC-1 TRADITIONAL COMPOSITE HELMET

Phenix Technology Inc.'s Traditional Composite helmet boasts a low center of gravity and is center balanced, thus, promoting a very low degree of neck fatigue. Our traditional composite models interface with any SCBA mask. We offer several options when building your custom TC-1. The TC-1 is compliant to current OSHA and NFPA 1971 standards.

COLOR OPTIONS



Traditional Eagle Finial



SPECS

- High temperature compression molded composite shell
- Closed cell energy impact cap
- Exclusive Phenix suspension liner fully adjustable from 6 1/2" to 7 3/4"*
- Black Nomex and fire retardant cotton 8" detachable earlaps
- NFPA compliant goggles
- Standard colors: red, white, blue, yellow, and black

*If necessary, other sizing available upon request.

OPTIONS

- Deluxe leather comfort package
- J5 Firelid
- Latigo leather combination chinstrap
- Brim Trim
- Custom Colors available upon request**

**Custom colors will incur additional costs.

Available with
Flip Down
Eye Shields*

*Flip Down Eye Shield is not NFPA compliant. If ordering an NFPA compliant helmet, the flip down eye shields will be shipped loose as an extra part.

Now offering helmet mounted
flashlights. Pictured is the
Nitex Pro eLED®
Rechargeable flashlight by
Underwater Kinetics.

FEATURES

- Compound Path Optics
- Waterproof
- Recharges in just 4 hours

