

Citrus All-Purpose Cleaner

S3376

All-purpose d-Limonene based cleaner and degreaser. Cleans and deodorizes in one easy step. Removes dirty hand prints from walls and doors, scuff marks from floors, bathtub rings, soot, grease, smoke film, oil, light carbon, dust, lipstick and crayon marks and deodorizes as it cleans.



Where To Use

Bathrooms	Detail Shops	Commercial Buildings
Schools	Kitchens	Housekeeping
Offices	Homes	Nursing Homes
Hotels	Apartments	Day Car Facilities

Directions

Hold can upright. Point valve opening toward area to be cleaned. Press button and spray a small area until wet. Let stand for several seconds and wipe off with a clean dry cloth. When using on plastic seat covers, leather or plastic tile, rinse with a clean damp cloth.

Technical Specifications

CAN SIZE: ...20 oz.	NET WEIGHT: 19 oz.
ODOR:Orange Citrus	USDA RATING:C-1
TYPE:Aerosol	PROPELLANT:Hydrocarbon
pH:12.0	SPRAY PATTERN: .Semi-stable Foam
COLOR:White	FLAMMABILITY:....None - per CPSC Flame
	Ext. Test in 16 CFR 1500.45.



201 Boston Turnpike, Bolton, CT 06043-7203 800-227-5536 • 860-646-0172 • FAX 860-645-6070

www.simoniz.com www.simonizjanitorial.com

All labels are GHS compliant.

Sani-Bowl

Disinfectant Bathroom Cleaner

EPA Registration # 10324-86-61524



Disinfectants

Description

Sani-Bowl is an effective one step Disinfectant, Cleaner, Mildewstat, Fungicide, Sanitizer (non-food contact surfaces), Virucide, and Deodorizer. This product cleans, disinfects and deodorizes surfaces by killing odor causing microorganisms and mold and mildew. Its non-abrasive formula is designed for use on (restroom surfaces): glazed ceramic (restroom) tile, glazed porcelain, chrome, stainless steel and plastic surfaces associated with floors, walls, fixtures, toilets, urinals, sinks, shower rooms, and locker rooms.

Directions for Use

Apply this product undiluted to walls, floors and other hard, (inanimate) non-porous surfaces such as tables, chairs, countertops, sinks, glazed tile, glazed porcelain and bed frames with a cloth, mop or mechanical spray device so as to thoroughly wet surfaces. Treated surfaces must remain wet for 10 minutes. If mechanical spray device is used, spray should be coarse. Spray 6-8 inches from surface. Rub with brush, sponge or cloth. Do not breathe spray (mist). Rinse with potable water after use on surfaces that come in contact with food. For detailed directions on other applications please call Harvard Chemical and request the Master Label.

Safety Cautions

- Keep out of reach of children
- Prior to using this or any cleaning product, make sure employees read and understand the hazard information found on the product label and Material Safety Data Sheet (MSDS). The label and MSDS will also provide information on handling precautions, protective equipment and first aid instructions which might be appropriate for this product.

Features & Benefits

- Multi Surface Cleaner
- Deodorizes as it disinfects
- One step Cleaner & Disinfectant
- Broad spectrum kill
- Inhibits growth of Mold & Mildew
- Lingering Floral Bouquet Fragrance

Specifications

Appearance:	Clear blue Liquid
Odor:	Floral
PH	9-10
Specific Gravity:	1
Detergency:	Excellent
Biodegradable:	Yes

Dilution

Ready to Use

Available Sizes

Case/ 12x1 quart: Item # 204602

Case/ 4x1 gallon: Item # 204604

Pail / 5 gallon : Item # 204605

Drum / 55 gallon : Item # 204606

Harvard Chemical Research, Inc
Atlanta, Georgia

Phone: 404-761-0657 Fax: 404-761-0709



Harvard Chemical
Research, Inc.

CitraZov Powder w/De-Zov-All

Super Strength Powder Pre-spray

Carpet Care

Description

CitraZov Powder is a super-strength high pH powder pre-spray that dissolves quickly and completely and will melt away the toughest carpet soils while imparting a nice citrus scent behind. At 2oz per gallon you cannot beat the value and with premium ingredients like Percarbonate (Oxygen), Enzyme, D-limonene, boosted alkalinity (pH 12), and boosted Citrus fragrance it will perform at the highest level. This high alkaline formula will blast off grease and grime without extended dwell time. This will be your go to product for filthy restaurants, apartments, commercial and industrial properties. Also works great on olefin carpets as well as nylon.

Directions for Use

Directions: Best results are obtained when mixed with hot water. Mix or shake until powder is fully dissolved. Spray on soiled carpet until evenly damp. Allow to dwell 10-15 minutes. Do not allow carpet to completely dry before extraction. Extract from carpet using Free Rinse Pro in rinse water, a light acidic rinse agent to neutralize any alkaline residues. **Dilution at 2oz per gallon: Pump or Electric Sprayers** - 1 scoop (2 ounces) of CitraZov Powder W/De-Zov-All per gallon of hot water for most jobs (medium soil). Dilute 2 scoop (4 ounces) of CitraZov Powder W/De-Zov-All per gallon of hot water for severe jobs (heavy soil). **Hydro-Force Injection Sprayer** - Dilute 8 scoops (16 ounces) of CitraZov POWDER W/ De-Zov-All per Hydro-Force container of warm water. Dilute at 1 to 8 setting. **Tile and Grout:** 1 scoop (2 ounces) of CitraZov Powder W/De-Zov-All per gallon of hot water for light to medium soil. Dilute 2 scoop (4 ounces) of CitraZov Powder W/De-Zov-All per gallon of hot water for heavy soil.

Safety Cautions

- Keep out of reach of children
- Prior to using this or any cleaning product, make sure employees read and understand the hazard information found on the product label and Material Safety Data Sheet (MSDS). The label and MSDS will also provide information on handling precautions, protective equipment and first aid instructions which might be appropriate for this product.

Features & Benefits

- Fortified with Citrus Oil (D-limonene)
- Contains powdered Oxygen to fight stains
- Enzyme fortified to attack organic residue
- Boosted Citrus fragrance
- Works quickly and efficiently
- High pH formula is tough on grease
- Prevents redepositing of particulates
- 100% Biodegradable

Specifications

Appearance:	White Powder
Odor:	Citrus
PH	12-13
Specific Gravity:	N/A
Detergency:	Excellent
Biodegradable:	Yes

Dilution

See dilution levels under directions for use

Available Sizes

Case/ 4x7.5lb : Item # 808908

Pail / 45lb : Item # 808916

Keg / 100lb : Item # 808913

Harvard Chemical Research, Inc

Atlanta, Georgia

Phone: 404-761-0657 Fax: 404-761-0709

www.hcronline.com



**Harvard Chemical
Research, Inc.**

Grime Release Pro

Prespray and Traffic Lane Cleaner



Description

Grime Release Pro is a premium concentrated prespray and traffic lane cleaner. Powerful emulsifiers lift and suspend grease, oil and soil, rinsing completely leaving no residue and no re-soiling. Effective on all fibers including olefins and safe for stain resistant residential carpet. Up to 32-1 dilution delivers cost effective, high quality carpet cleaning.

Grime Release Pro has been awarded the Carpet and Rug Institute Seal of Approval

Directions for Use

INSTRUCTIONS: This is a highly concentrated product. Shake well before using. Mix 4 oz./gal. (1:32) for routine cleaning, 6 oz./gal. (1:21) for heavy soil. Pre-spray, allow 5 to 15 minutes dwell time, and do not allow to dry. Follow with extraction detergent or acid rinse.

HYDROFORCE APPLICATION: for High-pressure model add 1.5 quarts for 1:32 dilution, 2.5 quarts for 1:21 dilution, to the Hydroforce container, fill with water. Pre-spray, follow with extraction detergent or acid rinse.

Safety Cautions

- Keep out of reach of children
- Prior to using this or any cleaning product, make sure employees read and understand the hazard information found on the product label and Material Safety Data Sheet (MSDS). The label and MSDS will also provide information on handling precautions, protective equipment and first aid instructions which might be appropriate for this product.

Features & Benefits

- The pinnacle of pre-conditioning carpet cleaners
- Concentration - 1:32
- Penetrates to remove dirt and grease, while rinsing easily
- Meets stain-resistant specifications for safe use
- CRI Seal of Approval

Specifications

Appearance:	Straw/Milky Liquid
Odor:	Bland
PH	9.5-10
Biodegradable:	Yes
Detergency:	Excellent

Dilution

Medium Soil.....	1:32 (4 ounces / gallon)
Heavy Soil.....	1:21 (6 ounces / gallon)
Hydroforce High Pressure.....	1:32 (48 ounces / Tank)
Hydroforce.....	1:21 (80 ounces / Tank)

Available Sizes

Case/ 4x1 gallon: Item # 256004
Pail / 5 gallon : Item # 256005
Drum / 55 gallon : Item # 256006

Harvard Chemical Research, Inc

Atlanta, Georgia

Phone: 404-761-0657 Fax: 404-761-0709

www.hcronline.com



**Harvard Chemical
Research, Inc.**

My-shield Broad Spectrum Disinfectant w/Zetrisil – (1 gallon)

SKU E-1010-03 (USA EPA)**Categories** [Broad Spectrum Disinfectant](#), [Disinfectants](#), [My-shield Products](#)

Description

Kills 99.9% of Corona virus & 99.9% of common germs

Nonhazardous. Bleach & Chlorine-free: Most Broad Spectrum Disinfectants available on the market today contain harsh compounds that have been found to be highly toxic & corrosive and very hazardous to human health & the environment.

Quick & easy to apply: My-shield Broad Spectrum Disinfectant comes in a ready-mixed solution with no dilution required. Small surface areas: Can be sprayed directly onto a surface or item and allowed to dry. Alternatively, wipes or hand-held spray packs can be applied directly onto any surface or item. For large surface areas: (e.g. building interiors). An electrostatic sprayer can be used to easily disperse the disinfectant to all surfaces within a room including walls, ceilings, flooring, furniture, etc. Drying time with this application is very quick and the procedure is complete within minutes.

EPA Approved (#94196-4): Designed for use in Households & non-Healthcare applications. Suitable for hotel rooms, cruise ship cabins & food preparation areas (mattresses, bedspreads, carpets, curtains, light fittings, equipment, corridors, motor vehicles, aircraft, public lobbies, function rooms, and bathrooms). Create completely sanitized rooms to alleviate the concerns of health-conscious guests while reducing the risk of them contracting viruses & negating unpleasant odors.

Made in the USA



FOAMING ANTIBACTERIAL HAND & BODY WASH

Order #HSAB001 – Case Pack 6 x 1 Liters

Order #HSAB011 – Case Pack 4 x 1.25 Liters

Saffron Scented! Formulated to kill common germs that can cause disease. Gentle enough for frequent hand washings. Luxurious, thick foam helps spread faster across skin, creating a better topographical hand wash.



FOAMING ALL PURPOSE HAND & BODY WASH

Order #HSG001 – Case Pack 6 x 1 Liters

Order #HSG011 – Case Pack 4 x 1.25 Liters

Ocean Scented! High-quality, instant lather foam with moisturizers and emollients to leave skin feeling clean and refreshed. Gentle enough for frequent hand washings. Ideal for schools, office and light commercial buildings, health and athletic facilities public restrooms and more!



70% ALCOHOL FOAMING HAND SANITIZER

Order #STA001 – Case Pack 6 x 1 Liters

Order #STA011 – Case Pack 4 x 1.25 Liters

Kills harmful bacteria and germs while leaving skin soft.
High alcohol content for healthcare facilities. No water
required!

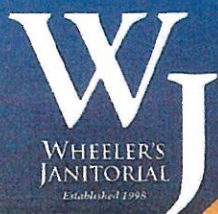


LUXURY FOAMING HAND & BODY CLEANSER

Order #HSG002 – Case Pack 6 x 1 Liters

Order #HSG012 – Case Pack 4 x 1.25 Liters

Lavender Scented! Excellent general purpose cleanser for everyday hand washing. Ideal in any environment.



IGU



HIGH GLOSS FLOOR FINISH

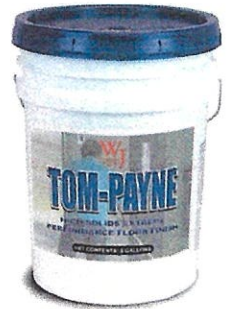


- All purpose, all system high solids finish with extreme lay-down gloss
- Exceptional long-term gloss and wear
- 22% high solids formula offers greater protection with fewer coats
- Non-yellowing, low maintenance, scuff-resistant formula is ideal for areas where frequent buffing is not performed
- Use in schools, offices, hospitals, retail stores, lobbies
- Large area coverage – up to 3,000 sq. ft. per gallon
- Fast-drying – 30 to 40 minutes under normal conditions
- Meets ASTM D2047 Method for slip resistance

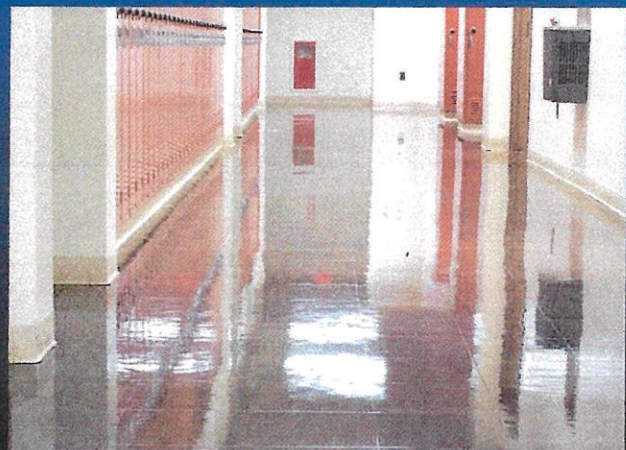
Phone: (601) 892-7547 | Website: wheelersjanitorial.com



TOM-PAYNE



HIGH SOLIDS EXTREME PERFORMANCE FLOOR FINISH



- Combines deep gloss, high durability and ease-of-use into one product
- High gloss acrylic polymers produce a beautiful, long-lasting shine to reduce maintenance
- Non-yellowing, low maintenance formula offers excellent black mark and scuff resistance
- Perfect for classrooms, patient rooms, offices and retail establishments
- Ideal for limited maintenance programs, yet responds to daily burnishing, if desired
- Fast drying – 30 minutes under normal conditions
- Use on vinyl, rubber, linoleum, terrazzo, quarry tile and sealed concrete floors
- Slip-resistant – Meets ASTM D2047

Phone: (601) 892-7547 | Website: wheelersjanitorial.com

www.essind.com



Storm

CATEGORY 5: Heavy-Duty, No-Rinse Cleaner

FEATURES

- Multi-surface application
- Great for cleaning heavily soiled finished floors
- Free-rinsing, non-dulling and low foam all surface cleaner
- Removes soap scum from walls, sinks, tubs, etc.
- Slip-resistant – UL-classified

For Use As:

- General cleaner at 2 ounces per gallon
- Extreme soil at 6 ounces per gallon
- Auto scrubbers at 2 ounces per gallon
- Damp mopping at 1 ounce per gallon
- Deep scrub prior to recoating at 8 ounces per gallon
- Ice melt residue neutralizer at 2 ounces per gallon
- After strip neutralizer at 2 ounces per gallon
- Rinse after rubber/wood prep at 2 ounces per gallon

PROPERTIES

Type: Nonionic Detergent

Form: Clear Liquid

Odor: Lavender

Color: Purple

pH: 11.8

pH Use Dilution: (2 oz. /gallon) 9.7

Weight per Gallon: 8.69 lbs.

Storage Stability: Min. 1 Year

Freeze/Thaw: Passes 3 Cycles

Foam Height: Low

Properties are typical and subject to usual manufacturing tolerances



1043FC

© 2021 Essential Industries, Inc. B1721
LIT# LT-90000S1043FC



Scan QR code
for access to more
product information
and Safety Data Sheet.



ESSENTIAL[®]
INDUSTRIES

P.O. Box 12
Merton, Wisconsin 53056
Phone: (262) 538-1122
www.essind.com

www.essind.com



Blue Concentrate

Heavy-Duty, No-Rinse Cleaner

FEATURES

- Mild pH (9.1 in dilution) – great for cleaning heavily soiled finished floors
- Free-rinsing, non-dulling, and low foam all surface cleaner
- Excellent for neutralizing ice melt residue prior to recoating
- Removes soap scum from walls, sinks, tubs, etc.
- Slip-resistant – UL-classified

For Use As:

- General cleaner at 2 ounces per gallon
- Extreme soil at 6 ounces per gallon
- Auto scrubbers at 2 ounces per gallon
- Damp mopping at 1 ounce per gallon
- Deep scrub prior to recoating at 8 ounces per gallon
- Ice melt residue neutralizer at 2 ounces per gallon
- After strip neutralizer at 2 ounces per gallon
- Rinse after rubber/wood prep at 2 ounces per gallon

PROPERTIES

Type: Synthetic Detergent

Form: Clear Liquid

Odor: Citrus

Color: Blue

pH: 11.6 - 12.7

pH 1%: 9.1

Weight per Gallon: 8.69 lbs.

Storage Stability: Min. 1 Year

Freeze/Thaw: Passes 3 Cycles

Foam Height: Very Low

Actives: >15%

Properties are typical and subject to usual manufacturing tolerances



2085FC

© 2021 Essential Industries, Inc. A1521
Lit. # LT-90000S2085FC



Scan QR code
for access to more
product information
and Safety Data Sheet.

ESSENTIAL[®]
INDUSTRIES

P.O. Box 12
Merton, Wisconsin 53056
Phone: (262) 538-1122
www.essind.com



PANTHEON

CONCRETE SEALER

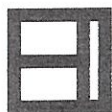
FEATURES

- For interior applications
- Wet adhesion properties
- Low VOCs
- Non-blushing, non-yellowing
- Excellent water resistance
- Resistant to acids, bases and stains

STAIN RESISTANCE

1 Hour Test, 1 Hour Recovery

10W30 Synthetic Oil.....	No Effect
10W30 Motor Oil.....	No Effect
Silicone Brake Fluid.....	No Effect
Kerosene.....	No Effect
Coke.....	No Effect
Automatic Transmission Fluid.....	No Effect
Vinegar.....	No Effect
90 Weight Gear Oil.....	No Effect
Gasoline.....	No Effect
Diesel Fuel.....	No Effect
Hydraulic Fluid.....	No Effect
Windshield Fluid.....	Slight softening, recovers
1:1 Ethylene Glycol/Water.....	Slight softening, recovers
E85 (85% Ethanol, 15% Gasoline).....	Slight softening, recovers



ESSENTIAL[®]
INDUSTRIES

© 2019 Essential Industries, Inc. J2219

P.O. Box 12
Merton, Wisconsin 53056
Phone: (262) 538-1122
www.essind.com

Lit. # LT-9000050273FC

Durable Sealer for
Interior Concrete
and Terrazzo Floors

PROPERTIES

Properties are typical and subject to usual manufacturing tolerances.

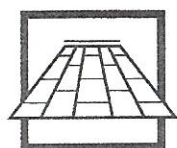
Type: Acrylic Emulsion
Form: Opaque Liquid
Odor: Bland
Color: White
Film Clarity: Clear
Weight Per Gallon: 8.55 Lbs.
pH: 8.0
Floor Solids: 25%
Viscosity (CPS): < 20 CPS
Storage Stability: Minimum 1 Year
Freeze/Thaw: Protect From Freezing
V.O.C.: < 1%



Scan QR code
for access to the
Safety Data Sheet.



The next generation
in wood floor care
excellence!



128SF

Water-Based Urethane Wood Finish

Properties*

Type	Water-Based Reactive Urethane/Acrylic Blend
Form	Opaque Liquid
Odor	Bland
Color	White
Weight per Gallon	8.51 Lbs.
pH	7.0 - 8.0
Floor Solids	29%
Storage Stability	Up To 1 Year, Unopened
Freeze/Thaw	Passes 3 Cycles
V.O.C.	<280 gm/l

*Properties are typical and subject to usual manufacturing tolerances



Floor Coating and Finishing
Material As to Slip Resistance
Only. 1775



Sport Kote® PC is the next generation of Sport Kote, the market leading one-part, water-based gym coating for the last 15 years. But now, that innovative self cross-linking formula incorporates revolutionary polycarbonate technology. This is the same material found in the bullet proof canopy of the U.S. Military's new F-22 Raptor fighter jets.

That means **BIG GAINS** in:

- **SCRATCH RESISTANCE**
- **SCUFF RESISTANCE**
- **DURABILITY**
- **DEPTH OF GLOSS**
- **GLOSS LONGEVITY**



More benefits include:

- Easy, dustless prep – no sanding or screening required
- Single-component, just pour and apply
- No pot life
- Adheres to ANY sound gym floor coating
- Easily restored to like-new gloss
- Fast dry time – 60 minutes under normal conditions
- Play on it the next day
- Finish lasts at least a year with proper maintenance
- Self cross-linking eliminates need for catalysts, gluing or heavy metals
- VOC-compliant in all 50 states
- n-MP-free



Essential Industries, Inc.
Merton, Wisconsin 53056-0012
Ph: 262.538.1122 or 800.551.9679
www.essind.com

www.sportkote.com

© 2016 Essential Industries, Inc. G0816 LT-900005128SF