

HermanMiller

Thrive™ Ergonomic Portfolio





Welcome to a Healthier Workplace

Outfit an office that's good for people and your business with the Thrive Ergonomic Portfolio. With our ergonomic expertise and research-based products, we'll help you shape a workplace where it's easier for people to be healthy, productive, and engaged.

We understand how people think, what their bodies need to stay comfortable, and their need for both privacy and interaction. With the diverse products in the Thrive Ergonomic Portfolio, you have options for outfitting an entire office with spaces that will help people work better, and feel good doing it. It's how we help you create an office where everyone can thrive.

Everybody's Human

At Herman Miller, we spend a lot of time exploring the relationship between people's experiences in the workplace and their fundamental human needs. In addition, we research the sociology of work—how people affect the work environment, and how the work environment affects people. We use this knowledge to help organizations and their design partners create workplaces where every tool and furnishing feels right.



Physical

Is work taking a toll on your body? Eighty percent of all office workers who have back pain during their careers emphatically say yes. We believe it's because most work environments aren't designed to fully support people's bodies, tools, and tasks. Consider a high-performance work chair that engages the lower back and prevents fatigue or a sit-to-stand desk that encourages healthy transitions between sitting and standing. Add a monitor arm that positions the screen in the most comfortable viewing position.



Cognitive

What's on your mind? Grocery lists. Vacations. Lunch. With everything people have going on, it's easy to be distracted and emotionally drained. It's even easier to feel this way in a meeting where the person sitting at the head of the table is blocking the main display. When people can't see the information being presented on screen, they have difficulty concentrating. This can lead to anxiety, especially when the information being presented is critical to one's job. A simple fix? Eliminate the chair from the head of the table, and eliminate the physical barrier inhibiting everyone's ability to process information.



Social

Are you a people person? For the majority of us, the answer is yes—and no. Most of us seek to balance our need for privacy with our need to be with others. We also have different requirements for the amount of space between us and other people as we interact—requirements that can vary among cultures. The most effective office environments acknowledge that different types of work require different types of settings where people can work naturally, both together and alone.

Good for People. Good for Business Too.

When you give people the support their bodies need to thrive, you'll help your business thrive too. Research shows that incorporating best practices for physical, social, and cognitive ergonomics and taking a proactive approach to employee wellness can make a measurable difference in what companies spend on healthcare and workers' compensation each year.

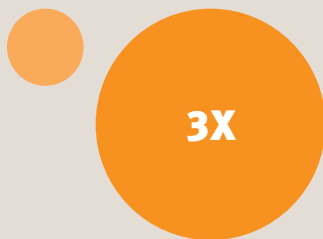
For the past 10 years, the total cost of medical expenses for low-back pain in the United States has exceeded \$100 billion per year.

↑ \$100 B

Eight out of 10 workers experience back pain at some point in their careers.



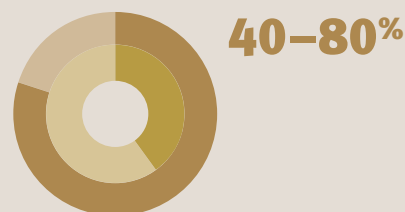
At age 60, our eyes need three times as much light to see as they did at 20.



Percentage of adults who experience eyestrain due to electronics use.



The prevalence of work-related musculoskeletal disorders is reported to be 40–80% among computer users.



91% of all computer users suffer from eyestrain, and computer vision syndrome affects nearly 66 million people.



32% of employers say arthritis and back problems negatively impact health insurance plans—third after diabetes and cancer.

32%



For every dollar invested in an ergonomic intervention strategy in an office environment, there is a return of \$17.50.

+ \$17.50

Leading the Way in Wellness and Productivity for Over 50 Years

The Thrive Ergonomic Portfolio comes from a long line of innovators, design experts, and award winners. Years of studying how people work have produced a string of firsts that help people feel better and work better. And there are plenty more where those came from.

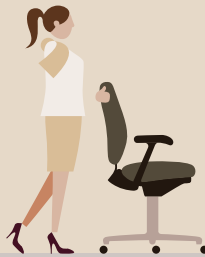
1964

Action Office®, designed for variations in posture, offers the world's first sit-to-stand product.



1976

Designer Bill Stumpf introduces ergonomics to the contract furniture industry. It's no wonder we named his first chair Ergon®.



1991

Herman Miller becomes a charter member of the Office Ergonomic Research Committee.



1991

Wishbone®, the first flat-screen monitor arm in the world, arrives on the market.



2013

By applying a deeper understanding of what makes us human, Living Office® delivers a more natural and desirable experience of work for people.



2014

Mirra® 2 redefines dynamic support with the Butterfly Back™, which merges flexible fabric with polymer veins.



2015

Renew™ Link's trapezoid work surface reduces the distraction caused by awkward sightlines typical of benching.



1994

Aeron® (IDSA's Design of the Decade) is the first work chair to use non-foam fabric.



2002

PostureFit® revolutionizes the industry, supporting the base of your spine to hold your back in healthy seated alignment.



2008

Embody® becomes the first work chair designed to create harmony between a person's body and their technology.



2010

Flo® (Red Dot Award) becomes one of the world's first monitor arms to support progressive lens users and touch screens.



2015

Exclave™ is the first comprehensive suite of products to address the physical, psychological, and social aspects of collaborative work.



2016

Aeron is remastered for today's work, workers, and work settings, including an exclusive, adjustable version of PostureFit and advanced 8Z Pellicle™ suspension material.



2017

Live™ OS is a system of cloud-connected furnishings, user app, and organizational dashboard. Paired with high-performance work chairs and height-adjustable desks, Live OS helps people stay active and healthy at work.



2018

Cosm™ instantly responds to your body, movement, and posture to provide natural balance and support. Its Auto-Harmonic Tilt, Intercept suspension, and flexible frame work together to give you a feeling of weightlessness, anywhere you work.





High-Performance Work Seating

Three Innovations for Sitting Well

We've been thinking about how to keep people comfortable at work for more than 60 years. We know that to deliver the best experience for people at work, a space and the products in it must support people as they think, move, and interact.

That's why we continue to build on what we know about the cognitive, physical, and social needs all people have. Every new discovery in health science, human behavior, and technology advances our thinking and our products.

This research culminates in high-performance work chairs that empower the body, so people stay comfortable as they work. While each of our chairs are uniquely suited to different tasks, all our high-performance work chairs help people think, create, and share ideas through three shared strands of DNA—Natural Balanced Movement, Total Spinal Support, and Dynamic Fit.

Natural Balanced Movement

Our chairs move in tandem with you, through any change in position, keeping your entire body stress-free.

Total Spinal Support

When your body is properly supported as you sit, you have the strength you need to stay comfortable and injury-free as you work.

Dynamic Fit

Herman Miller's high-performance work chairs are designed to support you through all your twists and turns, no matter the shape or size of your body.





Embody Chair

Designed by Bill Stumpf and Jeff Weber

Embody is the only chair that actually improves your health while you sit. Designed for long-term sitting, Embody offers a completely customizable fit, distributing your weight appropriately with Pixelated Support while the back flexes to support your body's micro-movements. The Embody tilt and kicker provides natural, balanced motion through a range of posture changes. And the chair's Backfit™ adjustment allows you to position the backrest so you achieve a neutral, balanced posture based on your unique spinal curvature.



Also shown: Ubi™ Work Tools; Pari™ Screens



Aeron Chair

Designed by Bill Stumpf and Don Chadwick, 1994

Remastered by Don Chadwick, 2016

The most recognized and admired office chair in the world, Aeron offers revolutionary ergonomic support for the widest range of shapes and sizes. Its iconic design—an industry benchmark for ergonomics since 1994—remains largely unchanged but was remastered in 2016. Aeron now offers smarter weight distribution and suspension through 8ZPellicle, and adjustable PostureFit SL™, creating total spinal support based on Herman Miller's latest research on the science of sitting, advancements in materials, manufacturing and technology, and today's world of work.





Cosm Chair

Designed by Studio 7.5

As people enjoy the freedom that a more varied, flexible work environment affords—moving from individual workpoints to communal settings to more formal meetings—consistent ergonomic support is lacking. Cosm offers exactly this consistency through unparalleled movement, comfort, and performance. Its sophisticated ergonomic design instantly responds to your body, movement, and posture to provide natural balance and total support. No matter who sat in the chair before you, how long you'll be in it, or what you'll be doing, Cosm gives you a new experience of comfort—anywhere you work.

Mirra 2 Chair

Designed by Studio 7.5

Embracing the athletic attitude of today's knowledge worker, Mirra 2 offers sitters a winning combination of simplicity, flexibility, and personalized ergonomics. The lightweight design is ideal for settings where agility is key and the ultra-responsive materials enable you to shift seamlessly between focused and collaborative work. The seat and back adapt to you with a smooth, balanced feel as you recline, thanks to the Harmonic 2 Tilt. With dynamic surfaces that respond to your slightest movements and simple, intuitive adjustments to fine-tune the fit, Mirra 2 balances immediate comfort and personalized ergonomics in one sophisticated design.







Celle® Chair

Designed by Jerome Caruso

Expectations are high for work chairs—and in places where different people use the same chair successively, around the clock, they're even higher. Celle's dependable, hardworking design stands up to heavy use, even in the most demanding environments—from call centers to nurses' stations, conference areas to laboratories. Celle's patented Cellular Suspension™ conforms to your unique shape and stature and the PostureFit sacral support is designed to maintain proper spinal alignment. As you lean back, Celle's patented Harmonic Tilt prevents your lower back from pulling away from the backrest, keeping you balanced and supported as you move naturally.





Sayl® Chair

Designed by Yves Béhar

Designed to make a statement, Sayl delivers a high degree of ergonomic support through a distinctive, dematerialized design. Inspired by suspension bridges—structures that deliver the most using the least material—Sayl's 3D Intelligent® suspension back lets you stretch and move, striking a healthy balance between support and freedom. Sayl's stretch knit back cover provides a touch of warmth and a softer aesthetic while maintaining the beauty of the signature 3-D suspension back. Available in an expressive palette, the knit back adds visual interest while providing plenty of options to personalize your chair.

Lino™ Chair

Designed by Sam Hecht & Kim Colin

With a harmonious blend of performance essentials and authored design at an unexpected price point, Lino brings uncompromising comfort and style to any space. Lino offers PostureFit, which supports your spine and reinforces your pelvis, and a few different arm options, which were carefully considered, smartly mimicking yours: wider at the elbow and slimmer at the wrist. A broad material and color selection gives people a highly customizable chair.





Verus™ Chair

Redefining what an affordable work chair should be, Verus offers long- and short-term comfort and proper ergonomic support. Our patented PostureFit sacral support is standard in Verus and keeps the spine properly aligned. By simplifying the chair's form, using materials in a thoughtful way, and leaning on more than 40 years of experience supporting sitters of all types, we're giving everyone a seat at Herman Miller's work seating table.

Setu® Chair

Designed by Studio 7.5

The Setu chair was created for how you work and live now. Its innovative Kinematic Spine™ bends and flexes to your every move without the need for adjustment. Its finely tuned fabric provides superior suspension and conforms to your body's contours. All you need to do is sit down: you and the chair move as one. With minimal components, the result is a dematerialized design that is lightweight and easy to use in virtually any space.



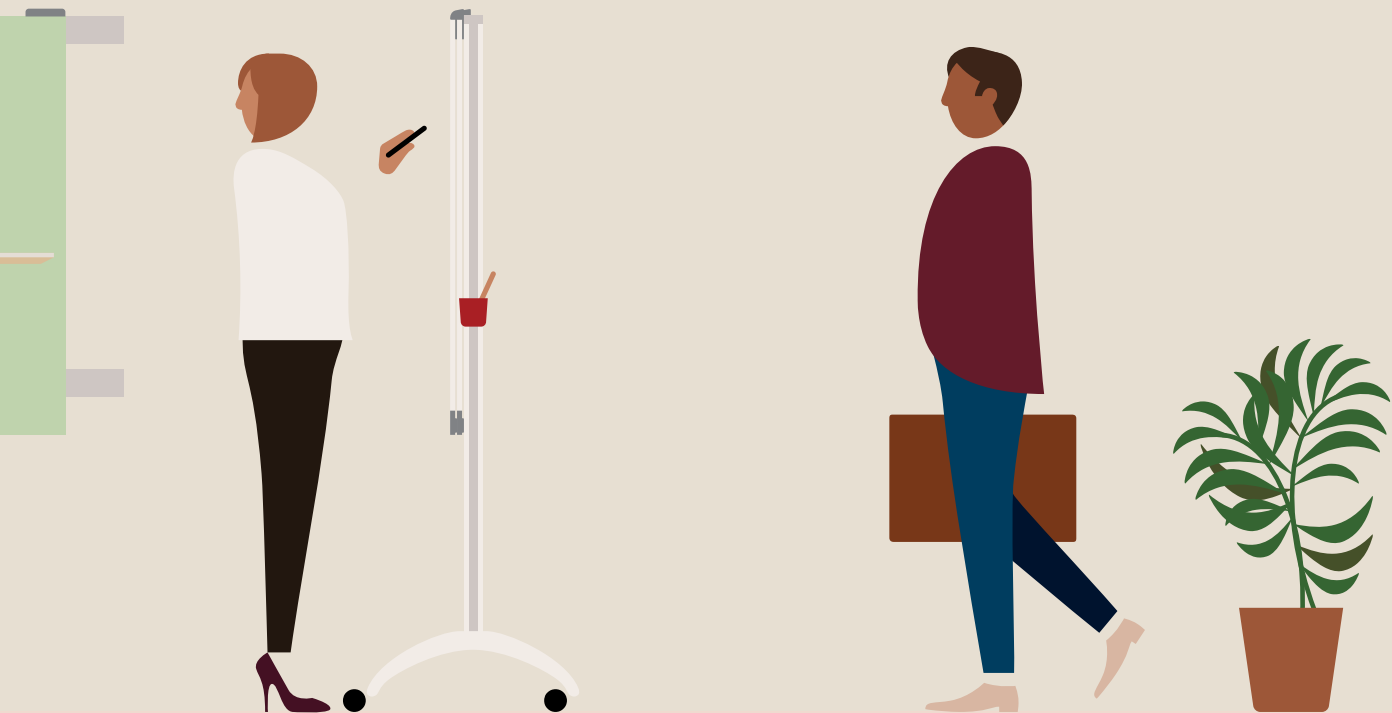




Performance Desks and Tables

A Healthier Way to Work

Supporting your body as you move is a concept we defined and designed in every one of our work chairs. Our performance tables, desks, and benches encourage a different kind of movement—from sitting to standing—as they support whatever you're doing. Combined with a great chair, these versatile work surfaces give you a full range of movement to help you stay more active and healthier while you work.







Renew Link

Designed by Brian Alexander

Renew Link makes benching better, helping organizations condense their real estate footprint while improving employee health and focus. Cables are accessible but concealed from view and distractions are kept at bay with open sightlines, thanks to the positioning of the work surfaces. By accommodating both sitting and standing work postures, Renew Link brings a new level of individual choice to shared work environments.

Nevi™ Link

Designed by Brian Alexander

Fit more people into your office without sacrificing their comfort with Nevi Link. These height-adjustable benches encourage regular movement and condense your real estate footprint through a streamlined design. You can scale to any application with multiple configurations and options for cable management and accessories. It's how we're helping you create an active and efficient office and a healthy bottom line.









Renew Sit-to-Stand Tables

Designed by Brian Alexander

Renew Sit-to-Stand Tables make moving from sitting to standing—and back again—a natural part of your day. Combined with a great chair, it gives you a full range of supported movement to help you stay more active and healthy while you work. A soft, paddle-shaped switch activates the powered height adjustment over a range of 27 to 46 inches high. Softly angled corners under the table protect your knees from bumps and bruises and encourage movement. A seamless wire management design routes the cords from all of your desktop tools into a cable trough below the table, keeping them out of sight even when the table is raised.

Motia® Sit-to-Stand Tables

Our bodies aren't designed to stay in one position. We were made to move. Designed with quality, minimal materials, and available in various finishes, Motia makes height adjustability easy to afford, easy to use, and easy to integrate—in any setting. Moving with workers and their workflow, Motia enables a smooth transition between sitting and standing. The rectangular-top surface, with its electric lift, can handle up to 250 pounds. Motia puts people and workplaces in motion.







Nevi Sit-to-Stand Tables

We think people should be able to sit—and stand—comfortably. Enter Nevi Sit-to-Stand Tables: height-adjustable tables that enhance your people's wellness. With the efficiently designed Nevi, you don't have to choose between getting desks or ergonomic office chairs or accessories—you can have it all. Nevi encourages regular movement between postures for better energy and productivity, and is available in refined, timeless finishes that harmonize with the entire Herman Miller portfolio.