

Quoting is easiest with Via Seating's Spec It custom build & quote tool. Get list pricing, chair renders, dimensions, symbols, user guides, a pdf quote & so much more all updatable in real time to your model selections. Check it out using the QR code >>



1. STARTING MODEL.



MODEL #	151	152	171
PRICE	\$895	\$930	\$1153
DESCRIPTION	Mesh mid back	Mesh high back	Upholstered mid back, parallel stitch
QUICK SHIP ¹	10/48: 10 chairs made in 48 hours.	10/48: 10 chairs made in 48 hours.	10/48: 10 chairs made in 48 hours.



MODEL #	172	161	162
PRICE	\$1230	\$1153	\$1230
DESCRIPTION	Upholstered high back, parallel stitch	Upholstered mid back, panel stitch	Upholstered high back, panel stitch
QUICK SHIP ¹	10/48: 10 chairs made in 48 hours.	10/48: 10 chairs made in 48 hours.	10/48: 10 chairs made in 48 hours.



MODEL #	181	182
PRICE	\$1225	\$1303
DESCRIPTION	Upholstered mid back, diamond stitch	Upholstered high back, diamond stitch
QUICK SHIP ¹	5/48: 5 chairs made in 48 hours.	5/48: 5 chairs made in 48 hours.

NOTE 1: QUICK SHIP PROGRAM

All models using in-stock "quick ship" fabrics & in-stock "quick ship" options are able to be produced in a 48-hour manufacturing period on business days during business hours. The number of completed models listed are able to be produced in that 48-hour period. Note, we require 1 business day within business hours to process completed orders received and 1 day to ship out the order. Quick ship does not include delays from mills in supplying fabric, COM/COL/custom textiles, custom configurations or shipment time once the product ships out. As we understand not all products are needed on quick ship, please confirm your need by date on your quote or with your AM/CAS.






For project lead times, especially on products including this symbol  call us at 1-800-433-6614 or email your CAS support person at csnorth@viaseating.com, cssouth@viaseating.com, cswest@viaseating.com or cscanada@viaseating.com.





2. OPTIONAL FIXED BACK.

pg 3 of 8

PART #	F
PRICE	+\$0
DESCRIPTION	Fixed back option Standard chair has a height adjustable back feature

3. CHAIR OR STOOL CONTROL MECHANISM.

					
USE WITH	All models.	All models.	All models.	All models.	All models.
PART #	25C	26C	74C	74C-12SS	67C
PRICE	+\$0	+\$122	+\$80	+\$202	+\$85
DESCRIPTION	Standard Basic tilt	Basic tilt with seat depth adjustment	Auto-adjust body balance	Auto-adjust body balance with seat depth adjustment	Quick adjust advanced synchro
PASSES	ANSI/BIFMA X5.1	ANSI/BIFMA X5.1	ANSI/BIFMA X5.1	ANSI/BIFMA X5.1	ANSI/BIFMA X5.1

				
USE WITH	All models.	All models.	Mid backs.	Mid backs.
PART #	67C-SS	67C-SS-FT	35C-11DR	35C-11XDR
PRICE	+\$207	+\$261	+\$290	+\$290
DESCRIPTION	Quick adjust advanced synchro with seat depth adjustment	Quick adjust advanced synchro with seat depth and forward tilt adjustments	Tall stool mechanism with 70" vertical travel	Extra-tall stool mechanism with 95" vertical travel
PASSES	ANSI/BIFMA X5.1	ANSI/BIFMA X5.1	ANSI/BIFMA X5.1	ANSI/BIFMA X5.1

MAX WEIGHT CAPACITY PER MODEL-CONTROL.²

Model	25C	26C	74C	74C-12SS	67C	67C-SS	67C-SS-FT	35C-11DR	35C-11XDR
151	300 lb	300 lb	300 lb	300 lb	300 lb	300 lb	300 lb	300 lb	300 lb
152	300 lb	300 lb	300 lb	300 lb	300 lb	300 lb	300 lb	N/A	N/A
161	300 lb	300 lb	300 lb	300 lb	300 lb	300 lb	300 lb	300 lb	300 lb
162	300 lb	300 lb	300 lb	300 lb	300 lb	300 lb	300 lb	N/A	N/A
171	300 lb	300 lb	300 lb	300 lb	300 lb	300 lb	300 lb	300 lb	300 lb
172	300 lb	300 lb	300 lb	300 lb	300 lb	300 lb	300 lb	N/A	N/A
181	300 lb	300 lb	300 lb	300 lb	300 lb	300 lb	300 lb	300 lb	300 lb
182	300 lb	300 lb	300 lb	300 lb	300 lb	300 lb	300 lb	N/A	N/A

NOTE 2: Exceeding the max weight stated is considered not safe & is a violation of a warranty where one is applicable. For inquiries regarding needs above these max weight capacities, please call 1-800-433-6614 or email your CAS support person at csnorth@viaseating.com, cssouth@viaseating.com, cswest@viaseating.com or cscanada@viaseating.com.

4. ARM STYLE.



PART #	0A
PRICE	+\$0
DESCRIPTION	Standard armless



PART #	38A
PRICE	+\$73
MATERIAL	Nylon.
DESCRIPTION	Basic black height adjustable arm



PART #	39A
PRICE	+\$146
MATERIAL	Nylon.
DESCRIPTION	Black roll back arm



PART #	51A
PRICE	+\$117
MATERIAL	Polyurethane.
DESCRIPTION	Black arm with 2D to up to 8D adjustments



PART #	53A
PRICE	+\$199
MATERIAL	Aluminum.
DESCRIPTION	Polished arm with 2D to up to 8D adjustments



PART #	54A
PRICE	+\$247
MATERIAL	Aluminum.
DESCRIPTION	Polished loop arm



PART #	55A
PRICE	+\$298
MATERIAL	Aluminum.
DESCRIPTION	Polished loop arm with black armrest



PART #	59A
PRICE	+\$169
MATERIAL	Polyurethane.
DESCRIPTION	Black loop arm



PART #	61A
PRICE	+\$343
MATERIAL	Aluminum.
DESCRIPTION	Polished loop arm with upholstered armrest



PART #	96A
PRICE	+\$218
MATERIAL	Polyurethane.
DESCRIPTION	Black fixed cantilever arm



PART #	97A
PRICE	+\$298
MATERIAL	Aluminum.
DESCRIPTION	Polished fixed cantilever arm & black armrest

4A. ARMREST STYLE.



USE WITH	38A, 39A
PART #	12
PRICE	+\$0
MATERIAL	Polyurethane.
DESCRIPTION	Fixed black armrest



USE WITH	38A, 39A
PART #	6
PRICE	+\$0
MATERIAL	Polyurethane.
DESCRIPTION	Fixed black armrest



USE WITH	51A, 53A
PART #	20S
PRICE	+\$0
MATERIAL	Polyurethane.
DESCRIPTION	Fixed black armrest



USE WITH	51A, 53A
PART #	20R
PRICE	+\$55
MATERIAL	Polyurethane.
DESCRIPTION	4D black armrest

4B. OPTIONAL ARM WIDTH ADJUSTMENT BRACKETS.

pg 5 of 8

USE WITH	38A, 51A, 53A
PART #	19AB
PRICE	+\$44
DESCRIPTION	Arm width adjustment bracket (+2" per side)

5. BASE STYLE.



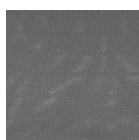
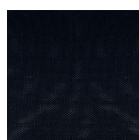
PART #	18BB	18PB	18BA
PRICE	+\$0	+\$151	+\$151
DESCRIPTION	Standard black nylon 5-star swivel base	Polished aluminum 5-star swivel base	Brushed aluminum 5-star swivel base
GASLIFT	G3A: Black.	G3A: Black.	G3A: Black.

5A. CASTER OR GLIDE STYLE.



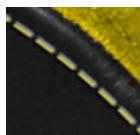
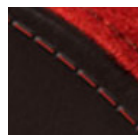
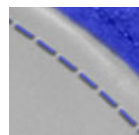
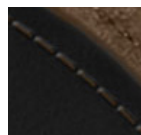
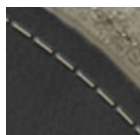
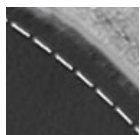
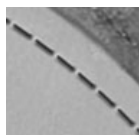
PART #	16HP	16HP-SL1	16SCG	16SCG-SL1	16GL
PRICE	+\$0	+\$38	+\$38	+\$76	+\$38
DESCRIPTION	Black carpet-only casters	Black carpet-only casters with safety brake	Black-grey all-floor casters	Black-grey all-floor casters with safety brake	Black glides

6. MESH BACKS ONLY: KNIT MESH COLOR.³



PART #	01PM	03PM
PRICE	+\$0	+\$0
DESCRIPTION	Black	Graphite

7. UPHOLSTERED BACKS ONLY: OPTIONAL EMPHASIZED STITCH THREAD COLOR.³



PART #	CTS-03	CTS-05	CTS-04	CTS-06	CTS-07	CTS-09	CTS-08	CTS-10
PRICE	+\$0	+\$0	+\$0	+\$0	+\$0	+\$0	+\$0	+\$0
DESCRIPTION	Black	Grey	White	Cream	Chocolate	Blue	Red	Yellow
NOTE	Standard thread color without emphasized stitch is a tonal match to the textile(s) selected.							

NOTE 3: Material images are representational. Lighting, paper type, monitor screen settings and other factors can alter the appearance of any material (frame color, mesh color, poly color, etc) sometimes significantly. To best compare a material to the setting it will be used in, please request a free sample of the material at samples.viaseating.com.



USE WITH	All models.	Upholstered backs.
PART #	/	U2
PRICE	+\$0	+\$0
DESCRIPTION	Single upholstery.	Two-tone upholstery.
TEXTILES	1 textile.	2 textiles.

OPTIONAL UPHOLSTERED AREAS



PART #	61A
COM COL	0.75 yd 1.6 sq ft
NOTE	Armrest matches seat textile.

CALCULATING COM | COL MATERIAL LENGTH.

MODEL #	BACK & SEAT	BACK ONLY	SEAT ONLY
151	N/A	N/A	0.75 yd 7.2 sq ft
152	N/A	N/A	0.75 yd 7.2 sq ft
161	1.75 yd 20.3 sq ft	1 yd 12.6 sq ft	0.75 yd 7.2 sq ft
162	2 yd 21.42 sq ft	1 yd 13.6 sq ft	0.75 yd 7.2 sq ft
171	1.5 yd 20.35 sq ft	1 yd 13.27 sq ft	0.75 yd 7.2 sq ft
172	1.5 yd 21.8 sq ft	1 yd 14.3 sq ft	0.75 yd 7.2 sq ft
181	1.5 yd 20.35 sq ft	1 yd 13.27 sq ft	0.75 yd 7.2 sq ft
182	1.5 yd 21.8 sq ft	1 yd 14.3 sq ft	0.75 yd 7.2 sq ft

COM yardage shown in this price book is based on non-directional textiles with a width of 54". Fabrics less than 54" wide or those requiring matching stripes, prints, or matching large pattern designs will require additional material.

COM WIDTH & REPEAT TABLE

FABRIC WIDTH	NON-DIRECTIONAL FABRIC	PATTERNS CONTAINING STRIPES, PLAIDS OR PATTERNS WITH REPEATS			
		2" - 14" REPEAT: ADD FABRIC	15" - 24" REPEAT: ADD FABRIC	25" - 27" REPEAT: ADD FABRIC	28" - 36" REPEAT: ADD FABRIC
54"	0%	10%	15%	20%	25%
50"	10%	20%	25%	30%	35%
48"	15%	25%	30%	35%	45%
45"	40%	50%	55%	60%	65%
36"	50%	60%	65%	70%	75%

See page 18 for COM | COL guidance. We are happy to supply yardage requirement quotes for large quantity chair orders, as material efficiencies may be realized. Please call 1-800-433-6614 or email your CAS support person at csnorth@viaseating.com, cssouth@viaseating.com, cswest@viaseating.com or cscanada@viaseating.com.

MODEL #	GR A	GR B	GR 1	COM	GR 2	GR 3	COL	GR 4	GR 5	GR 6	GR 7	GR 8
151	+\$0	+\$15	+\$50	+\$50	+\$72	+\$104	+\$104	+\$153	+\$204	+\$281	+\$365	+\$468
152	+\$0	+\$15	+\$50	+\$50	+\$72	+\$104	+\$104	+\$153	+\$204	+\$281	+\$365	+\$468
161	+\$0	+\$38	+\$119	+\$119	+\$171	+\$237	+\$237	+\$330	+\$416	+\$593	+\$790	+\$1021
162	+\$0	+\$42	+\$119	+\$119	+\$165	+\$251	+\$251	+\$361	+\$461	+\$625	+\$856	+\$1152
171	+\$0	+\$38	+\$119	+\$119	+\$171	+\$237	+\$237	+\$330	+\$416	+\$593	+\$790	+\$1021
172	+\$0	+\$42	+\$119	+\$119	+\$165	+\$251	+\$251	+\$361	+\$461	+\$625	+\$856	+\$1152
181	+\$0	+\$38	+\$119	+\$119	+\$171	+\$237	+\$237	+\$330	+\$416	+\$593	+\$790	+\$1021
182	+\$0	+\$42	+\$119	+\$119	+\$165	+\$251	+\$251	+\$361	+\$461	+\$625	+\$856	+\$1152

OPTIONAL UPHOLSTERED AREAS.⁵

PART #	GR A	GR B	GR 1	COM	GR 2	GR 3	COL	GR 4	GR 5	GR 6	GR 7	GR 8
61A	+\$0	+\$0	+\$0	+\$0	+\$0	+\$0	+\$0	+\$0	+\$42	+\$42	+\$42	+\$42

DIRECTION: For each textile in your model string, list grade letter or number followed by (mill, pattern & colorway). Note, grading scale goes up from A (lowest priced textile) to B to one (1) through eight (8).

NOTE 4: When multiple textiles are specified, the highest grade will be used for the total textile price calculation.

NOTE 5: Chairs with -48A or -61A are able to be produced at 2/48: 2 chairs made in 48 hours.

9. PACKAGING.

PART #	PRICE	DESCRIPTION
9FA	+\$0	95% ASSEMBLED: Product ships 95% assembled. No tools required.
FA	+\$95	FULLY ASSEMBLED: Product ships fully assembled in the box.
BW	CALL	BLANKET WRAPPED: Product ships blanket wrapped. Minimum order quantity 150. Call us for pricing 1-800-433-6614.

BUILD YOUR MODEL STRING

____ - ____ - ____ - ____ 4A ____ 4B ____ 5 ____ 5A ____ 6 ____ 7 ____ 8 ____ 8A ____ 9

- | | | | | | |
|----|-------------------------|----|-------------------------|----|--------------------------|
| 1 | STARTING MODEL. | 5 | BASE STYLE. | 8A | TEXTILE(S): GRADE, MILL, |
| 2 | + FIXED BACK. | 5A | CASTER OR GLIDE STYLE. | | PATTERN & COLORWAY |
| 3 | CONTROL MECHANISM. | 6 | MESH BACKS: MESH COLOR. | | PER TEXTILE. |
| 4 | ARM STYLE. | 7 | + EMPHASIZED STITCH. | 9 | PACKAGING. |
| 4A | + ARMREST STYLE. | 8 | UPHOLSTERY LAYOUT. | | |
| 4B | + ARM WIDTH ADJUSTMENT. | | | | |

QUOTING IS EASY WITH SPEC IT BUILD & QUOTE

Visit Spec It (<https://viaseating.com/spec-it/>) to build & price your desired model easily. Via Seating's custom design & quote tool features the ability to select & render an image of your desired chair in 4K photo realism with a click & zoom feature. Download an image of your model in multiple resolutions. View a part break out with pricing listed out per option. View dimensions that update based on the model you select. Download autoCAD & revit, view user guides & videos, download assembly instructions & so much more that all update in realtime to your model selections.

Visit <https://viaseating.com/spec-it/#/proform> or scan the QR code:



Reset

multi-use, nesting, side/guest, light task chair & stool

NEW OPTIONS



Key Features

- Breadth of Line: nesting chair, light task chair and light task stool
- Flex Back: Reset's framework allows for a comfortable 22° of flex back at the hip, a smooth and supportive flex feature that allows the back to relax and lifts the chest to enable deep breath
- Mesh: offering choices in high-performance, 4-way elastomeric mesh patented, award-winning Genie Copper Mesh® in natural copper and black copper
- Arms: armless or choice of integrated, fixed arms in black or magnet grey finishes
- Bases: five-star swivel bases available in black nylon, magnet grey nylon, polished aluminum and brushed aluminum. The 4-leg nesting chair is available in a black or magnet grey finish
- Options available using stocked textiles on Quick Ship

VIA 48-HOUR MANUFACTURING TIME

20 chairs/48 hours

WARRANTY

12 years, 5 for mesh

GSA (CONTRACT #: GS-28F-005CA)

Yes, SIN# 33721

AVAILABLE ON SPEC IT?

Yes

AVAILABLE ON CET EXTENSION?

Yes

AVAILABLE ON 2020 & PROJECT MATRIX?

Yes

SUSTAINABILITY CERTS & INITIATIVES



Design by Studio V

Studio V creates modern, sophisticated and original seating solutions that are ergonomic, beautiful and sustainable. This team of engineers, sustainability experts and designers is based in Reno, Nevada. Studio V develops products using a prototyping lab, the latest in 3D modeling software and a materials testing center.

via
SEATING

Reset

SEATING SERIES | PUBLIC LIST PRICING
GSA: YES, SIN# 33721 | MANUFACTURED IN U.S.A.

Quoting is easiest with Via Seating's Spec It custom build & quote tool. Get list pricing, chair renders, dimensions, symbols, user guides, a pdf quote & so much more all updatable in real time to your model selections. Check it out using the QR code >>



1. STARTING MODEL.



MODEL #	350	352
PRICE	\$653	\$774
DESCRIPTION	Nesting chair	Light task chair
QUICK SHIP ¹	20/48: 20 chairs made in 48 hours.	20/48: 20 chairs made in 48 hours.

NOTE 1: QUICK SHIP PROGRAM

All models using in-stock "quick ship" fabrics & in-stock "quick ship" options are able to be produced in a 48-hour manufacturing period on business days during business hours. The number of completed models listed are able to be produced in that 48-hour period. Note, we require 1 business day within business hours to process completed orders received and 1 day to ship out the order. Quick ship does not include delays from mills in supplying fabric, COM/COL/custom textiles, custom configurations or shipment time once the product ships out. As we understand not all products are needed on quick ship, please confirm your need by date on your quote or with your AM/CAS.

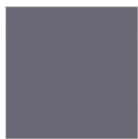
For project lead times, especially on products including this symbol  call us at 1-800-433-6614 or email your CAS support person at csnorth@viaseating.com, cssouth@viaseating.com, cswest@viaseating.com or cscanada@viaseating.com.

MAX WEIGHT CAPACITY PER MODEL.²

Model		11DR	11XDR	11TDR
350	300 lb	N/A	N/A	N/A
352	300 lb	300 lb	300 lb	300 lb

NOTE 2: Exceeding the max weight stated is considered not safe & is a violation of a warranty where one is applicable. For inquiries regarding needs above these max weight capacities, please call 1-800-433-6614 or email your CAS support person at csnorth@viaseating.com, cssouth@viaseating.com, cswest@viaseating.com or cscanada@viaseating.com.

2. FRAME FINISH.³ (SEE PAGE 4 OF 6)



PART #	B	DG
PRICE	+\$0	+\$42
DESCRIPTION	Black frame	Magnet grey

3. ARM STYLE.



PART #	0A
PRICE	+\$0
DESCRIPTION	Standard armless



PART #	RA1B	RA1G
PRICE	+\$27	+\$27
MATERIAL	Nylon.	Nylon.
DESCRIPTION	Matte black fixed loop arm	Matte grey fixed loop arm

4. MODEL 352 ONLY: SWIVEL BASES: BASE STYLE.



PART #	18BB	18GB	18PB	18BA
PRICE	+\$0	+\$0	+\$151	+\$151
DESCRIPTION	BLACK FRAMES (B): Standard black nylon 5-star swivel base	GREY FRAMES (GW): Standard grey nylon 5-star swivel base	Polished aluminum 5-star swivel base	Brushed aluminum 5-star swivel base
GASLIFT	G3A: Black.	G3A: Black.	G3A: Black.	G3A: Black.

4A. ALL MODELS: CASTER OR GLIDE STYLE.



PART #	16HP	16HP-SL1	16SCG	16SCG-SL1	16GL
PRICE	+\$0	+\$38	+\$38	+\$76	+\$38
DESCRIPTION	Black carpet-only casters	Black carpet-only casters with safety brake	Black-grey all-floor casters	Black-grey all-floor casters with safety brake	Black glides



USE WITH	352	352	352
PART #	11DR	11XDR	11TDR
PRICE	+\$205	+\$205	+\$320
DESCRIPTION	Standard Tall stool mechanism with 70" vertical travel	Extra-tall stool mechanism with 95" vertical travel	Telescoping sit-to-stand lift solution with 90" vertical
PASSES	ANSI/BIFMA X5.1	ANSI/BIFMA X5.1	ANSI/BIFMA X5.1

5. MESH COLOR.³

								
PART #	01RE	02RE	03RE	05RE	06RE	08RE	11RE	12RE
PRICE	+\$0	+\$0	+\$0	+\$0	+\$0	+\$0	+\$56	+\$56
DESCRIPTION	Black	Silver	Blue	Green	Red	Coffee	Black Copper	Natural Copper

NOTE 3: Material images are representational. Lighting, paper type, monitor screen settings and other factors can alter the apperance of any material (frame color, mesh color, poly color, etc) sometimes signficiantly. To best compare a material to the setting it will be used in, please request a free sample of the material at samples.viaseating.com.

6. UPHOLSTERY LAYOUT.



USE WITH	All models.
PART #	/
PRICE	+\$0
DESCRIPTION	Single upholstery.
TEXTILES	1 textile.

CALCULATING COM | COL MATERIAL LENGTH.

MODEL #	SEAT ONLY
350	1 yd 6.81 sq ft
352	0.75 yd 8.4 sq ft

COM yardage shown in this price book is based on non-directional textiles with a width of 54". Fabrics less than 54" wide or those requiring matching stripes, prints, or matching large pattern designs will require additional material.

COM WIDTH & REPEAT TABLE

FABRIC WIDTH	NON-DIRECTIONAL FABRIC	PATTERNS CONTAINING STRIPES, PLAIDS OR PATTERNS WITH REPEATS			
		2" - 14" REPEAT: ADD FABRIC	15" - 24" REPEAT: ADD FABRIC	25" - 27" REPEAT: ADD FABRIC	28" - 36" REPEAT: ADD FABRIC
54"	0%	10%	15%	20%	25%
50"	10%	20%	25%	30%	35%
48"	15%	25%	30%	35%	45%
45"	40%	50%	55%	60%	65%
36"	50%	60%	65%	70%	75%

See page 18 for COM | COL guidance. We are happy to supply yardage requirement quotes for large quantity chair orders, as material efficiencies may be realized. Please call 1-800-433-6614 or email your CAS support person at csnorth@viaseating.com, cssouth@viaseating.com, cswest@viaseating.com or cscanada@viaseating.com.

6A. TEXTILE.

MODEL #	GR A	GR B	GR 1	COM	GR 2	GR 3	COL	GR 4	GR 5	GR 6	GR 7	GR 8
350	+\$0	+\$28	+\$58	+\$58	+\$94	+\$129	+\$129	+\$165	+\$202	+\$273	+\$360	+\$481
352	+\$0	+\$28	+\$58	+\$58	+\$94	+\$129	+\$129	+\$165	+\$202	+\$273	+\$360	+\$481

DIRECTION: For each textile in your model string, list grade letter or number followed by (mill, pattern & colorway). Note, grading scale goes up from A (lowest priced textile) to B to one (1) through eight (8).

7. PACKAGING.

CHAIR 350:

PART #	PRICE	DESCRIPTION
FA	+\$0	FULLY ASSEMBLED: Product ships fully assembled in the box.
BW	CALL	BLANKET WRAPPED: Product ships blanket wrapped. Minimum order quantity 150. Call us for pricing 1-800-433-6614.

CHAIR 352:

PART #	PRICE	DESCRIPTION
9FA	+\$0	95% ASSEMBLED: Product ships 95% assembled. No tools required.
FA	+\$95	FULLY ASSEMBLED: Product ships fully assembled in the box.
BW	CALL	BLANKET WRAPPED: Product ships blanket wrapped. Minimum order quantity 150. Call us for pricing 1-800-433-6614.

1 2 3 4 4A 4B 5 6 6A 7

- | | | | | | |
|---|-----------------|----|------------------------|----|--------------------------|
| 1 | STARTING MODEL. | 4A | CASTER OR GLIDE STYLE. | 6A | TEXTILE(S): GRADE, MILL, |
| 2 | FRAME FINISH. | 4B | + STOOL HEIGHT RANGE. | | PATTERN & COLORWAY |
| 3 | ARM STYLE. | 5 | MESH COLOR. | | PER TEXTILE. |
| 4 | BASE STYLE. | 6 | UPHOLSTERY LAYOUT. | 7 | PACKAGING. |

QUOTING IS EASY WITH SPEC IT BUILD & QUOTE

Visit Spec It (<https://viaseating.com/spec-it/>) to build & price your desired model easily. Via Seating’s custom design & quote tool features the ability to select & render an image of your desired chair in 4K photo realism with a click & zoom feature. Download an image of your model in multiple resolutions. View a part break out with pricing listed out per option. View dimensions that update based on the model you select. Download autoCAD & revit, view user guides & videos, download assembly instructions & so much more that all update in realtime to your model selections.

Visit <https://viaseating.com/spec-it/#/reset> or scan the QR code:

