

Run II

ergonomic task, conference, copper mesh collection



Key Features

- Breadth of Line: high back chair, mid back chair, mid back stool, guest chair
- Mesh: available in multiple monochromatic & colorful solid mesh, Run II exclusive patchwork mesh and Via Seating's exclusive biocidal, self-sanitizing copper mesh
- Seats: offering two seat sizes: standard medium and large
- Arms: ergonomic adjustable height arm featuring a sleek, textured large cap and optional arm width adjustment available in black or magnet grey finish including a unique roll-back arm
- Control Mechanisms: full function ergonomic synchro control mechanism with easy to use side tension adjustment
- Bases: five-star swivel bases available in black nylon, polished aluminum and brushed aluminum
- Via Seating's comfort foam: a proprietary blend of high-density, injection-molded, closed-cell, cold-cured foam so durable and lasting it is backed by Via Seating's 12 year warranty

VIA 48-HOUR MANUFACTURING TIME

20 chairs/48 hours

WARRANTY

12 years, 5 for mesh

GSA (CONTRACT #: GS-28F-005CA)

Yes, SIN# 33721

AVAILABLE ON SPEC IT?

Yes

AVAILABLE ON CET EXTENSION?

Yes

AVAILABLE ON 2020 & PROJECT MATRIX?

Yes

SUSTAINABILITY CERTS & INITIATIVES



Design by Studio V

Studio V creates modern, sophisticated and original seating solutions that are ergonomic, beautiful and sustainable. This team of engineers, sustainability experts and designers is based in Reno, Nevada. Studio V develops products using a prototyping lab, the latest in 3D modeling software and a materials testing center.

via
SEATING

Run II

SEATING SERIES | PUBLIC LIST PRICING
GSA: YES, SIN# 33721 | MANUFACTURED IN U.S.A.

pg 2 of 8

Quoting is easiest with Via Seating's Spec It custom build & quote tool. Get list pricing, chair renders, dimensions, symbols, user guides, a pdf quote & so much more all updatable in real time to your model selections. Check it out using the QR code >>



1. STARTING MODEL.



MODEL #	931	971	972
PRICE	\$625	\$702	\$799
DESCRIPTION	Guest chair	Mid back, medium seat	Mid back, large seat
QUICK SHIP ¹	20/48: 20 chairs made in 48 hours.	20/48: 20 chairs made in 48 hours.	20/48: 20 chairs made in 48 hours.



MODEL #	981	982
PRICE	\$771	\$869
DESCRIPTION	High back, medium seat	High back, large seat
QUICK SHIP ¹	20/48: 20 chairs made in 48 hours.	20/48: 20 chairs made in 48 hours.

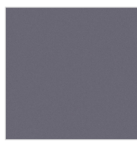


NOTE 1: QUICK SHIP PROGRAM

All models using in-stock "quick ship" fabrics & in-stock "quick ship" options are able to be produced in a 48-hour manufacturing period on business days during business hours. The number of completed models listed are able to be produced in that 48-hour period. Note, we require 1 business day within business hours to process completed orders received and 1 day to ship out the order. Quick ship does not include delays from mills in supplying fabric, COM/COL/custom textiles, custom configurations or shipment time once the product ships out. As we understand not all products are needed on quick ship, please confirm your need by date on your quote or with your AM/CAS.

For project lead times, especially on products including this symbol  call us at 1-800-433-6614 or email your CAS support person at csnorth@viaseating.com, cssouth@viaseating.com, cswest@viaseating.com or cscanada@viaseating.com.

2. FRAME FINISH.³ (SEE PG 6 OF 8)



PART #	B	DG
PRICE	+\$0	+\$75
DESCRIPTION	Black frame	Magnet grey



USE WITH	All models.	All models.	Mid backs.	Mid backs.
PART #	64C	65C	64CS-11DR	64CS-11XDR
PRICE	+\$0	+\$122	+\$205	+\$205
DESCRIPTION	Standard Synchro with side tension adjustment	Synchro with side tension & seat depth adjustment	Tall stool mechanism with 70" vertical travel	Extra-tall stool mechanism with 95" vertical travel
PASSES	ANSI/BIFMA X5.1	ANSI/BIFMA X5.1	ANSI/BIFMA X5.1	ANSI/BIFMA X5.1

MAX WEIGHT CAPACITY PER MODEL-CONTROL.²

Model		64C	65C	64CS-11DR	64CS-11XDR
931	300 lb	N/A	N/A	N/A	N/A
971	N/A	300 lb	300 lb	300 lb	300 lb
972	N/A	300 lb	300 lb	300 lb	300 lb
981	N/A	300 lb	300 lb	N/A	N/A
982	N/A	300 lb	300 lb	N/A	N/A

NOTE 2: Exceeding the max weight stated is considered not safe & is a violation of a warranty where one is applicable. For inquiries regarding needs above these max weight capacities, please call 1-800-433-6614 or email your CAS support person at csnorth@viaseating.com, cssouth@viaseating.com, cswest@viaseating.com or cscanada@viaseating.com.

4. ARM STYLE.

GUEST SEATING ONLY:



PART #	0A
PRICE	+\$0
DESCRIPTION	Standard armless



PART #	30A	30AG
PRICE	+\$82	+\$82
MATERIAL	Nylon.	Nylon.
DESCRIPTION	Black fixed loop arm for guest chairs	Grey fixed loop arm for guest chairs

MID & HIGH BACKS ONLY:



PART #	0A
PRICE	+\$0
DESCRIPTION	Standard armless



PART #	51A
PRICE	+\$117
MATERIAL	Polyurethane.
DESCRIPTION	Black arm with 2D to up to 8D adjustments



PART #	51AG
PRICE	+\$153
MATERIAL	Polyurethane.
DESCRIPTION	Grey arm with 2D to up to 8D adjustments



PART #	53A
PRICE	+\$199
MATERIAL	Aluminum.
DESCRIPTION	Polished arm with 2D to up to 8D adjustments



PART #	31A
PRICE	+\$86
MATERIAL	Nylon.
DESCRIPTION	Black fixed loop arm



PART #	38A
PRICE	+\$73
MATERIAL	Nylon.
DESCRIPTION	Basic black height adjustable arm



PART #	38AG
PRICE	+\$73
MATERIAL	Nylon.
DESCRIPTION	Basic grey height adjustable arm



PART #	39A
PRICE	+\$146
MATERIAL	Nylon.
DESCRIPTION	Black roll back arm

4A. ARMREST STYLE.



USE WITH	38A, 39A
PART #	6
PRICE	+\$0
MATERIAL	Polyurethane.
DESCRIPTION	Fixed black armrest



USE WITH	38A
PART #	10
PRICE	+\$0
MATERIAL	Polyurethane.
DESCRIPTION	Textured fixed black armrest



USE WITH	38AG
PART #	10G
PRICE	+\$0
MATERIAL	Polyurethane.
DESCRIPTION	Textured fixed grey armrest



USE WITH	51A, 53A
PART #	20S
PRICE	+\$0
MATERIAL	Polyurethane.
DESCRIPTION	Fixed black armrest



USE WITH	51A, 53A
PART #	20R
PRICE	+\$55
MATERIAL	Polyurethane.
DESCRIPTION	4D black armrest



USE WITH	51A, 51AG, 53A
PART #	20SG
PRICE	+\$0
MATERIAL	Polyurethane.
DESCRIPTION	Fixed grey armrest



USE WITH	51A, 51AG, 53A
PART #	20RG
PRICE	+\$55
MATERIAL	Polyurethane.
DESCRIPTION	4D grey armrest

4B. OPTIONAL ARM WIDTH ADJUSTMENT BRACKETS.

USE WITH	38A, 51A, 52A, 53A
PART #	19AB
PRICE	+\$44
DESCRIPTION	Arm width adjustment bracket (+2" per side)

5. BASE STYLE.



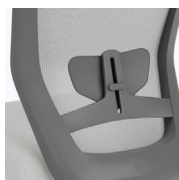
PART #	18BB	18GB	18PB	18BA
PRICE	+\$0	+\$0	+\$151	+\$151
DESCRIPTION	BLACK FRAMES (B): Standard black nylon 5-star swivel base	GREY FRAMES (GW): Standard grey nylon 5-star swivel base	Polished aluminum 5-star swivel base	Brushed aluminum 5-star swivel base
GASLIFT	G3A: Black.	G3A: Black.	G3A: Black.	G3A: Black.

5A. CASTER OR GLIDE STYLE.

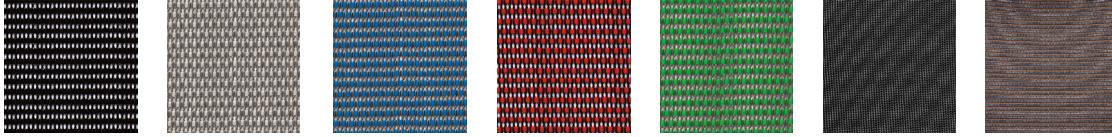


PART #	16HP	16HP-SL1	16SCG	16SCG-SL1	16GL
PRICE	+\$0	+\$38	+\$38	+\$76	+\$38
DESCRIPTION	Black carpet-only casters	Black carpet-only casters with safety brake	Black-grey all-floor casters	Black-grey all-floor casters with safety brake	Black glides

6. MID & HIGH BACKS ONLY: OPTIONAL ADJUSTABLE LUMBAR.



USE WITH	Mid & high backs.	Mid & high backs.
PART #	LR2	LR2G
PRICE	+\$100	+\$100
DESCRIPTION	Black height adjustable lumbar on black frames	Grey height adjustable lumbar on grey frames

7. MESH COLOR.³

PART #	1R	2R	3R	4R	5R	11R	13R
PRICE	+\$0	+\$0	+\$0	+\$0	+\$0	+\$182	+\$182
DESCRIPTION	Black	Grey	Blue	Red	Green	Black Copper	Natural Copper



PART #	6R	7R	8R
PRICE	+\$56	+\$56	+\$56
DESCRIPTION	Blue patchwork	Orange patchwork	Grey patchwork

NOTE 3: Material images are representational. Lighting, paper type, monitor screen settings and other factors can alter the appearance of any material (frame color, mesh color, poly color, etc) sometimes significantly. To best compare a material to the setting it will be used in, please request a free sample of the material at samples.viaseating.com.

8. UPHOLSTERY LAYOUT.



USE WITH	All models.
PART #	/
PRICE	+\$0
DESCRIPTION	Single upholstery.
TEXTILES	1 textile.

CALCULATING COM | COL MATERIAL LENGTH.

MODEL #	SEAT ONLY
931	1 yd 9 sq ft
971	1 yd 9 sq ft
972	1 yd 9 sq ft
981	1 yd 9 sq ft
982	1 yd 9 sq ft

COM yardage shown in this price book is based on non-directional textiles with a width of 54". Fabrics less than 54" wide or those requiring matching stripes, prints, or matching large pattern designs will require additional material.

COM WIDTH & REPEAT TABLE

FABRIC WIDTH	NON-DIRECTIONAL FABRIC	PATTERNS CONTAINING STRIPES, PLAIDS OR PATTERNS WITH REPEATS			
		2" - 14" REPEAT: ADD FABRIC	15" - 24" REPEAT: ADD FABRIC	25" - 27" REPEAT: ADD FABRIC	28" - 36" REPEAT: ADD FABRIC
54"	0%	10%	15%	20%	25%
50"	10%	20%	25%	30%	35%
48"	15%	25%	30%	35%	45%
45"	40%	50%	55%	60%	65%
36"	50%	60%	65%	70%	75%

See page 18 for COM | COL guidance. We are happy to supply yardage requirement quotes for large quantity chair orders, as material efficiencies may be realized. Please call 1-800-433-6614 or email your CAS support person at csnorth@viaseating.com, cssouth@viaseating.com, cswest@viaseating.com or cscanada@viaseating.com.

8A. TEXTILE(S).⁴

MODEL #	GR A	GR B	GR 1	COM	GR 2	GR 3	COL	GR 4	GR 5	GR 6	GR 7	GR 8
931	+\$0	+\$28	+\$58	+\$58	+\$94	+\$129	+\$129	+\$165	+\$202	+\$273	+\$360	+\$481
971	+\$0	+\$28	+\$58	+\$58	+\$94	+\$129	+\$129	+\$165	+\$202	+\$273	+\$360	+\$481
972	+\$0	+\$28	+\$58	+\$58	+\$94	+\$129	+\$129	+\$165	+\$202	+\$273	+\$360	+\$481
981	+\$0	+\$28	+\$58	+\$58	+\$94	+\$129	+\$129	+\$165	+\$202	+\$273	+\$360	+\$481
982	+\$0	+\$28	+\$58	+\$58	+\$94	+\$129	+\$129	+\$165	+\$202	+\$273	+\$360	+\$481

DIRECTION: For each textile in your model string, list grade letter or number followed by (mill, pattern & colorway). Note, grading scale goes up from A (lowest priced textile) to B to one (1) through eight (8).

9. PACKAGING.

MID & HIGH BACKS ONLY:

PART #	PRICE	DESCRIPTION
9FA	+\$0	95% ASSEMBLED: Product ships 95% assembled. No tools required.
FA	+\$95	FULLY ASSEMBLED: Product ships fully assembled in the box.
BW	CALL	BLANKET WRAPPED: Product ships blanket wrapped. Minimum order quantity 150. Call us for pricing 1-800-433-6614.

GUEST CHAIRS ONLY:

PART #	PRICE	DESCRIPTION
FA	+\$0	FULLY ASSEMBLED: Product ships fully assembled in the box.
BW	CALL	BLANKET WRAPPED: Product ships blanket wrapped. Minimum order quantity 150. Call us for pricing 1-800-433-6614.

BUILD YOUR MODEL STRING

 1 2 3 4 4A 4B 5 5A 6 7 8 8A 9

- | | | | | | |
|----|-------------------------|----|------------------------|----|--------------------------|
| 1 | STARTING MODEL. | 5 | BASE STYLE. | 8A | TEXTILE(S): GRADE, MILL, |
| 2 | FRAME FINISH. | 5A | CASTER OR GLIDE STYLE. | | PATTERN & COLORWAY |
| 3 | CONTROL MECHANISM. | 6 | MESH COLOR. | | PER TEXTILE. |
| 4 | ARM STYLE. | 7 | + LUMBAR SUPPORT. | 9 | PACKAGING. |
| 4A | + ARMREST STYLE. | 8 | UPHOLSTERY LAYOUT. | | |
| 4B | + ARM WIDTH ADJUSTMENT. | | | | |

QUOTING IS EASY WITH SPEC IT BUILD & QUOTE

Visit Spec It (<https://viaseating.com/spec-it/>) to build & price your desired model easily. Via Seating's custom design & quote tool features the ability to select & render an image of your desired chair in 4K photo realism with a click & zoom feature. Download an image of your model in multiple resolutions. View a part break out with pricing listed out per option. View dimensions that update based on the model you select. Download autoCAD & revit, view user guides & videos, download assembly instructions & so much more that all update in realtime to your model selections.

Visit <https://viaseating.com/spec-it/#/run-ll> or scan the QR code:



Satellite

tables, lobby, lounge, library, breakout areas

NEW SERIES



Key Features

- Breadth of Line: pull-up/laptop table
- Versatile Design: the simple, sleek design available in multiple finishes allows this table to easily be utilized in a wide variety of settings
- Finishes: available in 2 matte colors with eggshell finish on the tabletop surface & an option for custom colors with minimums & other conditions
- Options available on Quick Ship

VIA 48-HOUR MANUFACTURING TIME

4-6 week lead time

WARRANTY

12 years

GSA (CONTRACT #: GS-28F-005CA)

Open Market

AVAILABLE ON SPEC IT?

Yes

AVAILABLE ON CET EXTENSION?

Yes

AVAILABLE ON 2020 & PROJECT MATRIX?

Yes



Design by Studio V

Studio V creates modern, sophisticated and original seating solutions that are ergonomic, beautiful and sustainable. This team of engineers, sustainability experts and designers is based in Reno, Nevada. Studio V develops products using a prototyping lab, the latest in 3D modeling software and a materials testing center.

via
SEATING

Satellite

pg 2 of 4

TABLE SERIES | PUBLIC LIST PRICING

GSA: OPEN MARKET | MANUFACTURED IN CHINA

Quoting is easiest with Via Seating's Spec It custom build & quote tool. Get list pricing, chair renders, dimensions, symbols, user guides, a pdf quote & so much more all updatable in real time to your model selections. Check it out using the QR code >>



1. STARTING MODEL.



MODEL #	991
PRICE	\$754
DESCRIPTION	Laptop pull-up table
QUICK SHIP ¹	CALL: 4-6 WEEK LEAD TIME.

NOTE 1: QUICK SHIP PROGRAM

All models using in-stock "quick ship" fabrics & in-stock "quick ship" options are able to be produced in a 48-hour manufacturing period on business days during business hours. The number of completed models listed are able to be produced in that 48-hour period. Note, we require 1 business day within business hours to process completed orders received and 1 day to ship out the order. Quick ship does not include delays from mills in supplying fabric, COM/COL/custom textiles, custom configurations or shipment time once the product ships out. As we understand not all products are needed on quick ship, please confirm your need by date on your quote or with your AM/CAS.

For project lead times, especially on products including this symbol  call us at 1-800-433-6614 or email your CAS support person at csnorth@viaseating.com, cssouth@viaseating.com, cswest@viaseating.com or cscanada@viaseating.com.




MAX WEIGHT CAPACITY PER MODEL.²

Model	
991	80 lb

NOTE 2: Exceeding the max weight stated is considered not safe & is a violation of a warranty where one is applicable. For inquiries regarding needs above these max weight capacities, please call 1-800-433-6614 or email your CAS support person at csnorth@viaseating.com, cssouth@viaseating.com, cswest@viaseating.com or cscanada@viaseating.com.

2. TABLE FINISH.³



			
PART #	3	19	CC
PRICE	+\$0	+\$0	+\$0
DESCRIPTION	Matte white leg with eggshell white	Matte silver-grey leg with eggshell	Custom color Limitations & minimums apply Charge(s) at NET Call for details

NOTE 3: Material images are representational. Lighting, paper type, monitor screen settings and other factors can alter the appearance of any material (frame color, mesh color, poly color, etc) sometimes significantly. To best compare a material to the setting it will be used in, please request a free sample of the material at samples.viaseating.com.

PART #	PRICE	DESCRIPTION
AR	+\$0	ASSEMBLY REQUIRED: Product requires assembly. Tools may be required.
FA	+\$95	FULLY ASSEMBLED: Product ships fully assembled in the box.
BW	CALL	BLANKET WRAPPED: Product ships blanket wrapped. Minimum order quantity 150. Call us for pricing 1-800-433-6614.

BUILD YOUR MODEL STRING

____ - ____ - ____
1 2 3

- 1 STARTING MODEL.
- 2 TABLE FINISH.
- 3 PACKAGING.

QUOTING IS EASY WITH SPEC IT BUILD & QUOTE

Visit Spec It (<https://viaseating.com/spec-it/>) to build & price your desired model easily. Via Seating’s custom design & quote tool features the ability to select & render an image of your desired chair in 4K photo realism with a click & zoom feature. Download an image of your model in multiple resolutions. View a part break out with pricing listed out per option. View dimensions that update based on the model you select. Download autoCAD & revit, view user guides & videos, download assembly instructions & so much more that all update in realtime to your model selections.

Visit <https://viaseating.com/spec-it/#/satellite> or scan the QR code:



Saturn

tables, lobby, lounge, library, breakout areas

NEW SERIES



Key Features

- Breadth of Line: coffee table
- Leg Colors: The curved leg is offered in a glossy black or glossy white finish
- Laminate Finishes: Available in 3 tabletop laminate finishes
- Options available on Quick Ship

VIA 48-HOUR MANUFACTURING TIME

4-6 week lead time.

WARRANTY

12 years

GSA (CONTRACT #: GS-28F-005CA)

Open Market

AVAILABLE ON SPEC IT?

Yes

AVAILABLE ON CET EXTENSION?

Yes

AVAILABLE ON 2020 & PROJECT MATRIX?

Yes



Design by Studio V

Studio V creates modern, sophisticated and original seating solutions that are ergonomic, beautiful and sustainable. This team of engineers, sustainability experts and designers is based in Reno, Nevada. Studio V develops products using a prototyping lab, the latest in 3D modeling software and a materials testing center.

via
SEATING

Saturn

pg 2 of 4

TABLE SERIES | PUBLIC LIST PRICING

GSA: OPEN MARKET | MANUFACTURED IN U.S.A.

Quoting is easiest with Via Seating's Spec It custom build & quote tool. Get list pricing, chair renders, dimensions, symbols, user guides, a pdf quote & so much more all updatable in real time to your model selections. Check it out using the QR code >>



1. STARTING MODEL.



MODEL #	990
PRICE	\$1415
DESCRIPTION	Coffee table
QUICK SHIP ¹	CALL: 4-6 WEEK LEAD TIME.

NOTE 1: QUICK SHIP PROGRAM

All models using in-stock "quick ship" fabrics & in-stock "quick ship" options are able to be produced in a 48-hour manufacturing period on business days during business hours. The number of completed models listed are able to be produced in that 48-hour period. Note, we require 1 business day within business hours to process completed orders received and 1 day to ship out the order. Quick ship does not include delays from mills in supplying fabric, COM/COL/custom textiles, custom configurations or shipment time once the product ships out. As we understand not all products are needed on quick ship, please confirm your need by date on your quote or with your AM/CAS.

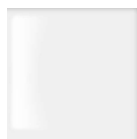
For project lead times, especially on products including this symbol  call us at 1-800-433-6614 or email your CAS support person at csnorth@viaseating.com, cssouth@viaseating.com, cswest@viaseating.com or cscanada@viaseating.com.

MAX WEIGHT CAPACITY PER MODEL.²

Model	
990	200 lb

NOTE 2: Exceeding the max weight stated is considered not safe & is a violation of a warranty where one is applicable. For inquiries regarding needs above these max weight capacities, please call 1-800-433-6614 or email your CAS support person at csnorth@viaseating.com, cssouth@viaseating.com, cswest@viaseating.com or cscanada@viaseating.com.

2. POWDER-COATED STEEL BASE FINISH.³ (SEE PAGE 3 OF 4)




PART #	MB	GW
PRICE	+\$0	+\$65
DESCRIPTION	Standard glossy black	Glossy white

2A. OPTIONAL FELT GLIDES.



PART #	FELT2
PRICE	+\$16
DESCRIPTION	Felt glides

				
PART #	TOM	NIA	ROO	CC
PRICE	+\$0	+\$0	+\$0	+\$0
DESCRIPTION	Totem	Niagara	Roots	Custom color Limitations & minimums apply Charge(s) at NET Call for details

NOTE 3: Material images are representational. Lighting, paper type, monitor screen settings and other factors can alter the apperance of any material (frame color, mesh color, poly color, etc) sometimes signifciantly. To best compare a material to the setting it will be used in, please request a free sample of the material at samples.viaseating.com.

4. PACKAGING.

PART #	PRICE	DESCRIPTION
FA	+\$0	FULLY ASSEMBLED: Product ships fully assembled in the box.
BW	CALL	BLANKET WRAPPED: Product ships blanket wrapped. Minimum order quantity 150. Call us for pricing 1-800-433-6614.

BUILD YOUR MODEL STRING

1 2 2A 3 4

- 1

STARTING MODEL.
- 2

BASE FINISH.
- 2A

+ FELT GLIDES.
- 3

SURFACE LAMINATE FINISH.
- 4

PACKAGING.

QUOTING IS EASY WITH SPEC IT BUILD & QUOTE

Visit Spec It (<https://viaseating.com/spec-it/>) to build & price your desired model easily. Via Seating’s custom design & quote tool features the ability to select & render an image of your desired chair in 4K photo realism with a click & zoom feature. Download an image of your model in multiple resolutions. View a part break out with pricing listed out per option. View dimensions that update based on the model you select. Download autoCAD & revit, view user guides & videos, download assembly instructions & so much more that all update in realtime to your model selections.

Visit <https://viaseating.com/spec-it/#/saturn> or scan the QR code:



Spec Stools

caregiver/physician/surgeon stool, multi-use, side/guest, light task chair & stool



Key Features

- Breadth of Line: stools at regular, tall and extra-tall heights
- Compact Footprint: a spacious seat is balanced atop a compact design
- Seamless Upholstery: supports infection prevention and easy clean up
- Easy Adjustments: available with a hands-free or hand-activated height adjustment ring
- Casters & Glides: offering a variety of black and grey soft carpet and hard floor casters and black glides. Casters offer the option of a safety-brake feature
- Options available using stocked textiles on Quick Ship

VIA 48-HOUR MANUFACTURING TIME

20 chairs/48 hours

WARRANTY

12 years

GSA (CONTRACT #: GS-28F-005CA)

Yes, SIN# 33721

AVAILABLE ON SPEC IT?

Yes

AVAILABLE ON CET EXTENSION?

No, pending

AVAILABLE ON 2020 & PROJECT MATRIX?

Yes

SUSTAINABILITY CERTS & INITIATIVES



Design by Studio V

Studio V creates modern, sophisticated and original seating solutions that are ergonomic, beautiful and sustainable. This team of engineers, sustainability experts and designers is based in Reno, Nevada. Studio V develops products using a prototyping lab, the latest in 3D modeling software and a materials testing center.

via
SEATING

Spec Stools

SEATING SERIES | PUBLIC LIST PRICING

GSA: YES, SIN# 33721 | MANUFACTURED IN U.S.A.

pg 2 of 6

Quoting is easiest with Via Seating's Spec It custom build & quote tool. Get list pricing, chair renders, dimensions, symbols, user guides, a pdf quote & so much more all updatable in real time to your model selections. Check it out using the QR code >>



1. STARTING MODEL.



MODEL #	1416	1401
PRICE	\$539	\$1058
DESCRIPTION	Stool with hand-activated height adjustment	Stool with hands-free height adjustment
QUICK SHIP ¹	20/48: 20 chairs made in 48 hours.	20/48: 20 chairs made in 48 hours.

NOTE 1: QUICK SHIP PROGRAM

All models using in-stock "quick ship" fabrics & in-stock "quick ship" options are able to be produced in a 48-hour manufacturing period on business days during business hours. The number of completed models listed are able to be produced in that 48-hour period. Note, we require 1 business day within business hours to process completed orders received and 1 day to ship out the order. Quick ship does not include delays from mills in supplying fabric, COM/COL/custom textiles, custom configurations or shipment time once the product ships out. As we understand not all products are needed on quick ship, please confirm your need by date on your quote or with your AM/CAS.

For project lead times, especially on products including this symbol  call us at 1-800-433-6614 or email your CAS support person at csnorth@viseating.com, cssouth@viseating.com, cswest@viseating.com or cscanada@viseating.com.

MAX WEIGHT CAPACITY PER MODEL.²

Model		11DR	11XDR
1401	300 lb	N/A	N/A
1416	300 lb	300 lb	300 lb

NOTE 2: Exceeding the max weight stated is considered not safe & is a violation of a warranty where one is applicable. For inquiries regarding needs above these max weight capacities, please call 1-800-433-6614 or email your CAS support person at csnorth@viseating.com, cssouth@viseating.com, cswest@viseating.com or cscanada@viseating.com.

2. MODEL 1416 ONLY: BASE STYLE.



PART #	13BB	18BB	18PB	18BA
PRICE	+\$0	+\$0	+\$151	+\$151
DESCRIPTION	Standard black nylon high-crown 5-star swivel	Black nylon 5-star swivel base	Polished aluminum 5-star swivel base	Brushed aluminum 5-star swivel base
GASLIFT	G3A: Black.	G3A: Black.	G3A: Black.	G3A: Black.