

#### 4. ARM STYLE.

pg 4 of 8



PART #	0A
PRICE	<b>+\$0</b>
DESCRIPTION	Standard armless



PART #	33A	35A	51A	52A	53A
PRICE	<b>+\$167</b>	<b>+\$234</b>	<b>+\$117</b>	<b>+\$153</b>	<b>+\$199</b>
MATERIAL	Nylon.	Nylon.	Polyurethane.	Polyurethane.	Aluminum.
DESCRIPTION	4u black arm with 6D adjustment & integrated armrest	4u white arm with 6D adjustment & integrated armrest	Black arm with 2D to up to 8D adjustments	White arm with 2D to up to 8D adjustments	Polished arm with 2D to up to 8D adjustments



PART #	38A	39A	46A
PRICE	<b>+\$73</b>	<b>+\$146</b>	<b>+\$110</b>
MATERIAL	Nylon.	Nylon.	Polyurethane.
DESCRIPTION	Basic black height adjustable arm	Black roll back arm	Black fixed upright arm with integrated armrest

#### 4A. ARMREST STYLE.



USE WITH	38A, 39A	51A, 52A, 53A	51A, 52A, 53A
PART #	6	20S	20R
PRICE	<b>+\$0</b>	<b>+\$0</b>	<b>+\$55</b>
MATERIAL	Polyurethane.	Polyurethane.	Polyurethane.
DESCRIPTION	Fixed black armrest	Fixed black armrest	4D black armrest

#### 4B. OPTIONAL ARM WIDTH ADJUSTMENT BRACKETS.

USE WITH	38A, 51A, 52A, 53A
PART #	19AB
PRICE	<b>+\$44</b>
DESCRIPTION	Arm width adjustment bracket (+2" per side)

## 5. BASE STYLE.

pg 5 of 8



PART #	18BB	18WB	18PB	18BA
PRICE	<b>+\$0</b>	<b>+\$0</b>	<b>+\$151</b>	<b>+\$151</b>
DESCRIPTION	BLACK FRAMES (B): Standard black nylon 5-star swivel base	WHITE FRAMES (W): Standard white nylon 5-star swivel base	Polished aluminum 5-star swivel base	Brushed aluminum 5-star swivel base
GASLIFT	G3A: Black.	G3A: Black.	G3A: Black.	G3A: Black.

## 5A. CASTER OR GLIDE STYLE.



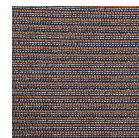
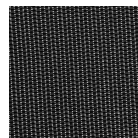
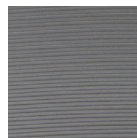
PART #	16HP	16HP-SL1	16SCG	16SCG-SL1	16GL
PRICE	<b>+\$0</b>	<b>+\$38</b>	<b>+\$38</b>	<b>+\$76</b>	<b>+\$38</b>
DESCRIPTION	Black carpet-only casters	Black carpet-only casters with safety brake	Black-grey all-floor casters	Black-grey all-floor casters with safety brake	Black glides

## 6. MESH & GROOVE BACKS ONLY: OPTIONAL ADJUSTABLE LUMBAR.



USE WITH	Mesh or Groove backs with black frames.	Mesh or Groove backs with white frames.	Upholstered backs
PART #	LS4B	LS4W	/
PRICE	<b>+\$86</b>	<b>+\$86</b>	<b>+\$0</b>
DESCRIPTION	Black adjustable lumbar support	White adjustable lumbar support	Integrated adjustable lumbar support.

## 7. MESH BACKS ONLY: MESH COLOR.<sup>3</sup> (SEE PAGE 6 OF 8)



PART #	01U	03U	02U	11U	13U
PRICE	<b>+\$0</b>	<b>+\$0</b>	<b>+\$0</b>	<b>+\$182</b>	<b>+\$182</b>
DESCRIPTION	Black	Graphite	Stardust	Black Copper	Natural Copper Striped

## 8. GROOVE BACKS ONLY: GROOVE COLOR.<sup>3</sup>

pg 6 of 8



PART #	01UG	02UG	03UG	04UG 	05UG 	06UG 	07UG 
PRICE	+\$0	+\$0	+\$0	+\$0	+\$0	+\$0	+\$0
DESCRIPTION	Black	Dark Grey	Light Grey	Taupe	Red	Blue	Green

NOTE 3: Material images are representational. Lighting, paper type, monitor screen settings and other factors can alter the appearance of any material (frame color, mesh color, poly color, etc) sometimes significantly. To best compare a material to the setting it will be used in, please request a free sample of the material at [samples.viaseating.com](https://samples.viaseating.com).

## 9. UPHOLSTERY LAYOUT.



USE WITH	All models.	770, 772, 773
PART #	/	U2
PRICE	+\$0	+\$0
DESCRIPTION	Single upholstery.	Two-tone upholstery.
TEXTILES	1 textile.	2 textiles.

## CALCULATING COM | COL MATERIAL LENGTH.

FOR MODEL #	BACK & SEAT	BACK ONLY	SEAT ONLY
780	N/A	N/A	0.75 yd   6 sq ft
782	N/A	N/A	0.85 yd   8.4 sq ft
783	N/A	N/A	1 yd   9 sq ft
785	N/A	N/A	0.75 yd   6 sq ft
787	N/A	N/A	1 yd   8.4 sq ft
788	N/A	N/A	1 yd   9 sq ft
770	1.75 yd   13 sq ft	0.77 yd   6.5 sq ft	0.75 yd   6 sq ft
772	1.05 yd   13 sq ft	0.77 yd   6.5 sq ft	1 yd   8.4 sq ft
773	1.75 yd   13 sq ft	0.77 yd   6.5 sq ft	1 yd   9 sq ft

COM yardage shown in this price book is based on non-directional textiles with a width of 54". Fabrics less than 54" wide or those requiring matching stripes, prints, or matching large pattern designs will require additional material.

#### COM WIDTH & REPEAT TABLE

FABRIC WIDTH	NON-DIRECTIONAL FABRIC	PATTERNS CONTAINING STRIPES, PLAIDS OR PATTERNS WITH REPEATS			
		2" - 14" REPEAT: ADD FABRIC	15" - 24" REPEAT: ADD FABRIC	25" - 27" REPEAT: ADD FABRIC	28" - 36" REPEAT: ADD FABRIC
54"	0%	10%	15%	20%	25%
50"	10%	20%	25%	30%	35%
48"	15%	25%	30%	35%	45%
45"	40%	50%	55%	60%	65%
36"	50%	60%	65%	70%	75%

See page 18 for COM | COL guidance. We are happy to supply yardage requirement quotes for large quantity chair orders, as material efficiencies may be realized. Please call 1-800-433-6614 or email your CAS support person at csnorth@viaseating.com, cssouth@viaseating.com, cswest@viaseating.com or cscanada@viaseating.com.

#### 9A. TEXTILE(S).<sup>4</sup>

MODEL #	GR A	GR B	GR 1	COM	GR 2	GR 3	COL	GR 4	GR 5	GR 6	GR 7	GR 8
780	+\$0	+\$18	+\$55	+\$55	+\$79	+\$119	+\$119	+\$158	+\$205	+\$257	+\$314	+\$373
782	+\$0	+\$18	+\$55	+\$55	+\$79	+\$119	+\$119	+\$158	+\$205	+\$257	+\$314	+\$373
783	+\$0	+\$18	+\$55	+\$55	+\$79	+\$119	+\$119	+\$158	+\$205	+\$257	+\$314	+\$373
785	+\$0	+\$18	+\$55	+\$55	+\$79	+\$119	+\$119	+\$158	+\$205	+\$257	+\$314	+\$373
787	+\$0	+\$18	+\$55	+\$55	+\$79	+\$119	+\$119	+\$158	+\$205	+\$257	+\$314	+\$373
788	+\$0	+\$18	+\$55	+\$55	+\$79	+\$119	+\$119	+\$158	+\$205	+\$257	+\$314	+\$373
770	+\$0	+\$18	+\$55	+\$55	+\$79	+\$119	+\$119	+\$158	+\$205	+\$257	+\$314	+\$373
772	+\$0	+\$18	+\$55	+\$55	+\$79	+\$119	+\$119	+\$158	+\$205	+\$257	+\$314	+\$373
773	+\$0	+\$18	+\$55	+\$55	+\$79	+\$119	+\$119	+\$158	+\$205	+\$257	+\$314	+\$373

DIRECTION: For each textile in your model string, list grade letter or number followed by (mill, pattern & colorway). Note, grading scale goes up from A (lowest priced textile) to B to one (1) through eight (8).

NOTE 4: When multiple textiles are specified, the highest grade will be used for the total textile price calculation.

#### 10. PACKAGING.

PART #	PRICE	DESCRIPTION
9FA	+\$0	95% ASSEMBLED: Product ships 95% assembled. No tools required.
FA	+\$95	FULLY ASSEMBLED: Product ships fully assembled in the box.
BW	CALL	BLANKET WRAPPED: Product ships blanket wrapped. Minimum order quantity 150. Call us for pricing 1-800-433-6614.



# Astro

motion-lounge, lounge, collaborative, lobby, executive guest



## Key Features

- Breadth of Line: soft seating chairs
- Designer Shape: high profile back for privacy and support, with a cradling sit
- Upholstery: option to upholster the seat and back in two different textiles
- Control Mechanisms: choices include motion-lounge rock (back-and-forth rocking movement), sway (side-to-side swaying movement) & 360 degree swivel
- Bases: gorgeous polished or black matte 4-leg base signature to the Astro series
- Via Seating's comfort foam: a proprietary blend of high-density, injection-molded, closed-cell, cold-cured foam so durable and lasting it is backed by Via Seating's 12 year warranty
- Options available using stocked textiles on Quick Ship

VIA 48-HOUR MANUFACTURING TIME

2 chairs/48 hours

WARRANTY

6 years

GSA (CONTRACT #: GS-28F-005CA)

Yes, SIN# 33721

AVAILABLE ON SPEC IT?

Yes

AVAILABLE ON CET EXTENSION?

Yes

AVAILABLE ON 2020 & PROJECT MATRIX?

Yes

SUSTAINABILITY CERTS & INITIATIVES



## Design by Studio V

Studio V creates modern, sophisticated and original seating solutions that are ergonomic, beautiful and sustainable. This team of engineers, sustainability experts and designers is based in Reno, Nevada. Studio V develops products using a prototyping lab, the latest in 3D modeling software and a materials testing center.

**via**  
SEATING

SEATING SERIES | PUBLIC LIST PRICING

GSA: YES, SIN# 33721 | MANUFACTURED IN U.S.A.

Quoting is easiest with Via Seating's Spec It custom build & quote tool. Get list pricing, chair renders, dimensions, symbols, user guides, a pdf quote & so much more all updatable in real time to your model selections. Check it out using the QR code >>



## 1. STARTING MODEL.



MODEL #	930
PRICE	<b>\$1994</b>
DESCRIPTION	Soft seating chair
QUICK SHIP <sup>1</sup>	2/48: 2 chairs made in 48 hours.

## NOTE 1: QUICK SHIP PROGRAM

All models using in-stock "quick ship" fabrics & in-stock "quick ship" options are able to be produced in a 48-hour manufacturing period on business days during business hours. The number of completed models listed are able to be produced in that 48-hour period. Note, we require 1 business day within business hours to process completed orders received and 1 day to ship out the order. Quick ship does not include delays from mills in supplying fabric, COM/COL/custom textiles, custom configurations or shipment time once the product ships out. As we understand not all products are needed on quick ship, please confirm your need by date on your quote or with your AM/CAS.

For project lead times, especially on products including this symbol 📦 call us at 1-800-433-6614 or email your CAS support person at csnorth@viaseating.com, cssouth@viaseating.com, cswest@viaseating.com or cscanada@viaseating.com.

## 2. OPTIONAL FIXED SEAT.

PART #	/	FXD
PRICE	<b>+\$0</b>	<b>+\$206</b>
DESCRIPTION	Standard clean-out, velcro-attached seat.	Permanet, fixed seat.

## 3. BASE STYLE.



PART #	33POL	33BLK
PRICE	<b>+\$0</b>	<b>+\$0</b>
DESCRIPTION	Polished 4-leg fixed-height base	Matte black 4-leg fixed-height base

MAX WEIGHT CAPACITY PER MODEL-BASE.<sup>2</sup>

Model	69C	70C	72C
930	300 lb	300 lb	300 lb

NOTE 2: Exceeding the max weight stated is considered not safe & is a violation of a warranty where one is applicable. For inquiries regarding needs above these max weight capacities, please call 1-800-433-6614 or email your CAS support person at csnorth@viaseating.com, cssouth@viaseating.com, cswest@viaseating.com or cscanada@viaseating.com.

#### 4. MOTION-LOUNGE CONTROL.


pg 3 of 4

USE WITH BASE	33BLK, 33POL	33BLK, 33POL	33BLK, 33POL
PART #	69C	70C	72C
PRICE	<b>+\$0</b>	<b>+\$206</b>	<b>+\$414</b>
DESCRIPTION	Standard 360 degree swivel mechanism	Rock mechanism	Rock & Sway mechanism
PASSES	ANSI/BIFMA X5.1	ANSI/BIFMA X5.1	ANSI/BIFMA X5.1

#### 4A. GASLIFT FUNCTIONALITY.

USE WITH BASE	33BLK, 33POL	33BLK, 33POL	33BLK, 33POL
PART #	SO	SR	SF
PRICE	<b>+\$0</b>	<b>+\$34</b>	<b>+\$34</b>
DESCRIPTION	Non return-to-center gas lift	Return-to-center gas lift	No swivel Fixed gas lift

#### 5. OPTIONAL EMPHASIZED STITCH THREAD COLOR.<sup>3</sup>

								
PART #	CTS-03	CTS-05	CTS-04	CTS-06	CTS-07	CTS-09	CTS-08	CTS-10
PRICE	<b>+\$0</b>	<b>+\$0</b>	<b>+\$0</b>	<b>+\$0</b>	<b>+\$0</b>	<b>+\$0</b>	<b>+\$0</b>	<b>+\$0</b>
DESCRIPTION	Black	Grey	White	Cream	Chocolate	Blue	Red	Yellow
NOTE	Standard thread color without emphasized stitch is a tonal match to the textile(s) selected.							

NOTE 3: Material images are representational. Lighting, paper type, monitor screen settings and other factors can alter the appearance of any material (frame color, mesh color, poly color, etc) sometimes significantly. To best compare a material to the setting it will be used in, please request a free sample of the material at [samples.viaseating.com](https://samples.viaseating.com).

#### 6. UPHOLSTERY LAYOUT.



USE WITH	930	930
PART #	/	U2
PRICE	<b>+\$0</b>	<b>+\$0</b>
DESCRIPTION	Single upholstery.	Two-tone upholstery.
TEXTILES	1 textile.	2 textiles.

#### CALCULATING COM | COL MATERIAL LENGTH.

MODEL #	BACK & SEAT	BACK ONLY	SEAT ONLY
930	3.5 yd   60 sq ft	2.75 yd   48 sq ft	1.25 yd   12 sq ft



COM yardage shown in this price book is based on non-directional textiles with a width of 54". Fabrics less than 54" wide or those requiring matching stripes, prints, or matching large pattern designs will require additional material.

## COM WIDTH & REPEAT TABLE

FABRIC WIDTH	NON-DIRECTIONAL FABRIC	PATTERNS CONTAINING STRIPES, PLAIDS OR PATTERNS WITH REPEATS			
		2" - 14" REPEAT: ADD FABRIC	15" - 24" REPEAT: ADD FABRIC	25" - 27" REPEAT: ADD FABRIC	28" - 36" REPEAT: ADD FABRIC
54"	0%	10%	15%	20%	25%
50"	10%	20%	25%	30%	35%
48"	15%	25%	30%	35%	45%
45"	40%	50%	55%	60%	65%
36"	50%	60%	65%	70%	75%

See page 18 for COM | COL guidance. We are happy to supply yardage requirement quotes for large quantity chair orders, as material efficiencies may be realized. Please call 1-800-433-6614 or email your CAS support person at [csnorth@viaseating.com](mailto:csnorth@viaseating.com), [cssouth@viaseating.com](mailto:cssouth@viaseating.com), [cswest@viaseating.com](mailto:cswest@viaseating.com) or [cscanada@viaseating.com](mailto:cscanada@viaseating.com).

### 6A. TEXTILE(S).<sup>4</sup>

MODEL #	GR A	GR B	GR 1	COM	GR 2	GR 3	COL	GR 4	GR 5	GR 6	GR 7	GR 8
930	<b>+\$0</b>	<b>+\$47</b>	<b>+\$183</b>	<b>+\$183</b>	<b>+\$296</b>	<b>+\$461</b>	<b>+\$461</b>	<b>+\$625</b>	<b>+\$777</b>	<b>+\$1120</b>	<b>+\$1447</b>	<b>+\$1815</b>

DIRECTION: For each textile in your model string, list grade letter or number followed by (mill, pattern & colorway). Note, grading scale goes up from A (lowest priced textile) to B to one (1) through eight (8).

NOTE 4: When multiple textiles are specified, the highest grade will be used for the total textile price calculation.

## 7. PACKAGING.

PART #	PRICE	DESCRIPTION
FA	<b>+\$0</b>	FULLY ASSEMBLED: Product ships fully assembled in the box.
BW	<b>CALL</b>	BLANKET WRAPPED: Product ships blanket wrapped. Minimum order quantity 150. Call us for pricing 1-800-433-6614.

## BUILD YOUR MODEL STRING

\_\_\_\_\_  
 1            2            3            4    4A            5            6            6A            7

- |   |                        |    |                          |    |                          |
|---|------------------------|----|--------------------------|----|--------------------------|
| 1 | STARTING MODEL.        | 4A | + GASLIFT FUNCTIONALITY. | 6A | TEXTILE(S): GRADE, MILL, |
| 2 | + FIXED SEAT.          | 5  | + EMPHASIZED STITCH.     |    | PATTERN & COLORWAY       |
| 3 | BASE STYLE.            | 6  | UPHOLSTERY LAYOUT.       |    | PER TEXTILE.             |
| 4 | MOTION-LOUNGE CONTROL. |    |                          | 7  | PACKAGING.               |

## QUOTING IS EASY WITH SPEC IT BUILD & QUOTE

Visit Spec It (<https://viaseating.com/spec-it/>) to build & price your desired model easily. Via Seating's custom design & quote tool features the ability to select & render an image of your desired chair in 4K photo realism with a click & zoom feature. Download an image of your model in multiple resolutions. View a part break out with pricing listed out per option. View dimensions that update based on the model you select. Download autoCAD & revit, view user guides & videos, download assembly instructions & so much more that all update in realtime to your model selections.

Visit <https://viaseating.com/spec-it/#/astro> or scan the QR code:



# Brisbane HD

ergonomic task chair & stool, 24/7 use, heavy-duty seating



## Key Features

- Breadth of Line: high back chair using an adjustable headrest, a mid back chair and a mid back stool
- Seats: petite to extra-large—with a 450 lb weight rating on the extra-large (D) seat
- Ballistic Brisbane: featuring Ballistic Brisbane, which uses strategically placed ballistic nylon to protect chair against gun, safety and utility belts
- Arms: multiple height adjustable arms including an arm with a roll back feature
- Control Mechanisms: controls include latest quick adjust advanced synchro (no endless turning of the handle to adjust your backrest to your level of comfort) with choice of an optional 2.5" seat depth adjustment & an optional +3° forward tilt adjustment
- Bases: five-star swivel bases in black nylon, polished aluminum or brushed aluminum
- Via Seating's comfort foam: a proprietary blend of high-density, injection-molded, closed-cell, cold-cured foam so durable and lasting it is backed by Via Seating's 12 year warranty



## Design by Studio V

Studio V creates modern, sophisticated and original seating solutions that are ergonomic, beautiful and sustainable. This team of engineers, sustainability experts and designers is based in Reno, Nevada. Studio V develops products using a prototyping lab, the latest in 3D modeling software and a materials testing center.

VIA 48-HOUR MANUFACTURING TIME

10-15 chairs/48 hours

WARRANTY

12 years

GSA (CONTRACT #: GS-28F-005CA)

Yes, SIN# 33721

AVAILABLE ON SPEC IT?

Yes

AVAILABLE ON CET EXTENSION?

No

AVAILABLE ON 2020 & PROJECT MATRIX?

Yes

SUSTAINABILITY CERTS & INITIATIVES



**via**  
SEATING

Quoting is easiest with Via Seating's Spec It custom build & quote tool. Get list pricing, chair renders, dimensions, symbols, user guides, a pdf quote & so much more all updatable in real time to your model selections. Check it out using the QR code >>



## 1. STARTING MODEL.



MODEL #	1303	1PTT-1303	1503
PRICE	<b>\$1160</b>	<b>\$1251</b>	<b>\$1267</b>
DESCRIPTION	Mid back, standard A seat	Mid back, petite A seat	Mid back, medium B seat
QUICK SHIP <sup>1</sup>	15/48: 15 chairs made in 48 hours.	15/48: 15 chairs made in 48 hours.	15/48: 15 chairs made in 48 hours.



MODEL #	1PTT-1503	1603	1703
PRICE	<b>\$1358</b>	<b>\$1387</b>	<b>\$1662</b>
DESCRIPTION	Mid back, petite B seat	Mid Back, large C seat	Mid Back, extra-large D seat
QUICK SHIP <sup>1</sup>	15/48: 15 chairs made in 48 hours.	15/48: 15 chairs made in 48 hours.	15/48: 15 chairs made in 48 hours.



## NOTE 1: QUICK SHIP PROGRAM

All models using in-stock "quick ship" fabrics & in-stock "quick ship" options are able to be produced in a 48-hour manufacturing period on business days during business hours. The number of completed models listed are able to be produced in that 48-hour period. Note, we require 1 business day within business hours to process completed orders received and 1 day to ship out the order. Quick ship does not include delays from mills in supplying fabric, COM/COL/custom textiles, custom configurations or shipment time once the product ships out. As we understand not all products are needed on quick ship, please confirm your need by date on your quote or with your AM/CAS.

For project lead times, especially on products including this symbol  call us at 1-800-433-6614 or email your CAS support person at csnorth@viaseating.com, cssouth@viaseating.com, cswest@viaseating.com or cscanada@viaseating.com.

## 2. CHAIR OR STOOL CONTROL MECHANISM.



USE WITH	All models.	All models.	All models.	All models.	All models.
PART #	67C	67C-SS	67C-SS-FT	35C-11DR	35C-11XDR
PRICE	<b>+\$0</b>	<b>+\$122</b>	<b>+\$176</b>	<b>+\$290</b>	<b>+\$290</b>
DESCRIPTION	Standard Quick adjust advanced synchro	Quick adjust advanced synchro with seat depth adjustment	Quick adjust advanced synchro with seat depth and forward tilt adjustments	Tall stool mechanism with 70" vertical travel	Extra-tall stool mechanism with 95" vertical travel
PASSES	ANSI/BIFMA X5.1	ANSI/BIFMA X5.1	ANSI/BIFMA X5.1	ANSI/BIFMA X5.1	ANSI/BIFMA X5.1

Model	67C	67C-SS	67C-SS-FT	35C-11DR	35C-11XDR
1303	350 lb	350 lb	350 lb	300 lb	300 lb
1PTT-1303	350 lb	350 lb	350 lb	300 lb	300 lb
1503	350 lb	350 lb	350 lb	300 lb	300 lb
1PTT-1503	350 lb	350 lb	350 lb	300 lb	300 lb
1603	400 lb	400 lb	400 lb	400 lb	400 lb
1703	450 lb	450 lb	450 lb	400 lb	400 lb

NOTE 2: Exceeding the max weight stated is considered not safe & is a violation of a warranty where one is applicable. For inquiries regarding needs above these max weight capacities, please call 1-800-433-6614 or email your CAS support person at csnorth@viaseating.com, cssouth@viaseating.com, cswest@viaseating.com or cscanada@viaseating.com.

### 3. ARM STYLE.



PART #	0A
PRICE	<b>+\$0</b>
DESCRIPTION	Standard armless



PART #	39A	51A	53A
PRICE	<b>+\$146</b>	<b>+\$117</b>	<b>+\$199</b>
MATERIAL	Nylon.	Polyurethane.	Aluminum.
DESCRIPTION	Black roll back arm	Black arm with 2D to up to 8D adjustments	Polished arm with 2D to up to 8D adjustments

### 3A. ARMREST STYLE.



USE WITH	39A	39A	51A, 53A	51A, 53A
PART #	5	6	20S	20R
PRICE	<b>+\$0</b>	<b>+\$0</b>	<b>+\$0</b>	<b>+\$55</b>
MATERIAL	Polyurethane.	Polyurethane.	Polyurethane.	Polyurethane.
DESCRIPTION	Fixed black armrest	Fixed black armrest	Fixed black armrest	4D black armrest

### 3B. OPTIONAL ARM WIDTH ADJUSTMENT BRACKETS.

USE WITH	51A, 53A
PART #	19AB
PRICE	<b>+\$44</b>
DESCRIPTION	Arm width adjustment bracket (+2" per side)

#### 4. BASE STYLE.

pg 4 of 6



PART #	18BB	18PB	18BA
PRICE	<b>+\$0</b>	<b>+\$151</b>	<b>+\$151</b>
DESCRIPTION	Standard black nylon 5-star swivel base	Polished aluminum 5-star swivel base	Brushed aluminum 5-star swivel base
GASLIFT	G3A: Black.	G3A: Black.	G3A: Black.

#### 4A. CASTER OR GLIDE STYLE.



PART #	16HP	16HP-SL1	16SCG	16SCG-SL1	16GL
PRICE	<b>+\$0</b>	<b>+\$38</b>	<b>+\$38</b>	<b>+\$76</b>	<b>+\$38</b>
DESCRIPTION	Black carpet-only casters	Black carpet-only casters with safety brake	Black-grey all-floor casters	Black-grey all-floor casters with safety brake	Black glides

#### 5. OPTIONAL ADJUSTABLE LUMBAR.



PART #	12LUM
PRICE	<b>+\$151</b>
DESCRIPTION	Mechanical internal lumbar support with knob adjustment

#### 6. OPTIONAL HEADREST.



PART #	HDR1
PRICE	<b>+\$264</b>
DESCRIPTION	This optional headrest allows you to adjust the position vertically by 2.5" of travel and tilt it from 5° forward to 40° rearward.

#### 7. OPTIONAL BALLISTIC NYLON.



PART #	BALL1
PRICE	<b>+\$330</b>
DESCRIPTION	Ballistic Brisbane nylon protects your seat from safety, gun & utility belts. Pattern: half-moon nylon on back of seat, half-moon nylon on bottom of the back, nylon down sides of the back and seat. Available on mid backs.