

## 8. OPTIONAL UPHOLSTERED BACKSHELL.



PART #	/	22UBF *	22UBL *
PRICE	<b>+\$0</b>	<b>+\$201</b>	<b>+\$237</b>
DESCRIPTION	Standard black plastic backshell	An upholstered backshell for fabrics & vinyls	An upholstered backshell for leathers

\* QUICK SHIP NOTE: Chairs with 22UBF or 22UBL are able to be produced at 10/48: 10 chairs made in 48 hours.

## 9. UPHOLSTERY LAYOUT.



USE WITH	All models.	All models.
PART #	/	U2
PRICE	<b>+\$0</b>	<b>+\$0</b>
DESCRIPTION	Single upholstery.	Two-tone upholstery.
TEXTILES	1 textile.	2 textiles.

## OPTIONAL UPHOLSTERED AREAS



PART #	HDR1	20UBF / 20UBL
COM   COL	0.35 yd   2 sq ft	0.75 yd   6.1 sq ft
NOTE	Headrest matches back textile.	Backshell matches back textile.

## CALCULATING COM | COL MATERIAL LENGTH.

MODEL #	BACK & SEAT	BACK ONLY	SEAT ONLY	BACK, SEAT & BACKSHELL
1303	0.75 yd   12.9 sq ft	0.75 yd   6.43 sq ft	0.75 yd   5.88 sq ft	1.5 yd   19 sq ft
1503	0.75 yd   14.5 sq ft	0.75 yd   6.43 sq ft	0.75 yd   8.4 sq ft	1.5 yd   21.32 sq ft
1603	1 yd   15.6 sq ft	0.75 yd   6.43 sq ft	1 yd   9 sq ft	1.75 yd   21.6 sq ft
1703	1.25 yd   15.75 sq ft	0.75 yd   6.43 sq ft	1 yd   9.5 sq ft	1.75 yd   21.5 sq ft

COM yardage shown in this price book is based on non-directional textiles with a width of 54". Fabrics less than 54" wide or those requiring matching stripes, prints, or matching large pattern designs will require additional material.

## COM WIDTH & REPEAT TABLE

FABRIC WIDTH	NON-DIRECTIONAL FABRIC	PATTERNS CONTAINING STRIPES, PLAIDS OR PATTERNS WITH REPEATS			
		2" - 14" REPEAT: ADD FABRIC	15" - 24" REPEAT: ADD FABRIC	25" - 27" REPEAT: ADD FABRIC	28" - 36" REPEAT: ADD FABRIC
54"	0%	10%	15%	20%	25%
50"	10%	20%	25%	30%	35%
48"	15%	25%	30%	35%	45%
45"	40%	50%	55%	60%	65%
36"	50%	60%	65%	70%	75%

See page 18 for COM | COL guidance. We are happy to supply yardage requirement quotes for large quantity chair orders, as material efficiencies may be realized. Please call 1-800-433-6614 or email your CAS support person at csnorth@viaseating.com, cssouth@viaseating.com, cswest@viaseating.com or cscanada@viaseating.com.

MODEL #	GR A	GR B	GR 1	COM	GR 2	GR 3	COL	GR 4	GR 5	GR 6	GR 7	GR 8
1303	+\$0	+\$25	+\$46	+\$46	+\$91	+\$135	+\$135	+\$180	+\$246	+\$335	+\$518	+\$778
1503	+\$0	+\$25	+\$46	+\$46	+\$91	+\$135	+\$135	+\$180	+\$246	+\$335	+\$518	+\$778
1603	+\$0	+\$25	+\$46	+\$46	+\$114	+\$157	+\$157	+\$246	+\$335	+\$424	+\$675	+\$973
1703	+\$0	+\$25	+\$46	+\$46	+\$114	+\$157	+\$157	+\$246	+\$335	+\$424	+\$675	+\$973

OPTIONAL UPHOLSTERED AREAS.

PART #	GR A	GR B	GR 1	COM	GR 2	GR 3	COL	GR 4	GR 5	GR 6	GR 7	GR 8
HDR1	+\$0	+\$0	+\$0	+\$0	+\$0	+\$0	+\$0	+\$0	+\$41	+\$41	+\$41	+\$41

DIRECTION: For each textile in your model string, list grade letter or number followed by (mill, pattern & colorway). Note, grading scale goes up from A (lowest priced textile) to B to one (1) through eight (8).

NOTE 4: When multiple textiles are specified, the highest grade will be used for the total textile price calculation.

10. PACKAGING.

PART #	PRICE	DESCRIPTION
9FA	+\$0	95% ASSEMBLED: Product ships 95% assembled. No tools required.
FA	+\$95	FULLY ASSEMBLED: Product ships fully assembled in the box.
BW	CALL	BLANKET WRAPPED: Product ships blanket wrapped. Minimum order quantity 150. Call us for pricing 1-800-433-6614.

BUILD YOUR MODEL STRING

1	2	3	3A	3B	4	4A	5	6	7	8	9	9A	10
---	---	---	----	----	---	----	---	---	---	---	---	----	----

1	STARTING MODEL.	4A	CASTER OR GLIDE STYLE.	9A	TEXTILE(S): GRADE, MILL,
2	CONTROL MECHANISM.	5	+ ADJUSTABLE LUMBAR SUPPORT.		PATTERN & COLORWAY
3	ARM STYLE.	6	+ ADJUSTABLE HEADREST.		PER TEXTILE.
3A	+ ARMREST STYLE.	7	+ BALLISTIC NYLON.	10	PACKAGING.
3B	+ ARM WIDTH ADJUSTMENT.	8	+ UPHOLSTERED BACKSHELL.		
4	BASE STYLE.	9	UPHOLSTERY LAYOUT.		

QUOTING IS EASY WITH SPEC IT BUILD & QUOTE

Visit Spec It (<https://viaseating.com/spec-it/>) to build & price your desired model easily. Via Seating’s custom design & quote tool features the ability to select & render an image of your desired chair in 4K photo realism with a click & zoom feature. Download an image of your model in multiple resolutions. View a part break out with pricing listed out per option. View dimensions that update based on the model you select. Download autoCAD & revit, view user guides & videos, download assembly instructions & so much more that all update in realtime to your model selections.

Visit <https://viaseating.com/spec-it/#/brisbane-hd> or scan the QR code:



# Brisbane

ergonomic task chair & stool



## Key Features

- Breadth of Line: available as high back chair using an adjustable headrest, a mid back chair and a mid back stool
- Seats: offering five seat sizes—petite to extra-large
- Ballistic Brisbane: featuring Ballistic Brisbane, which uses strategically placed ballistic nylon to protect chair against gun, safety and utility belts
- Arms: multiple height adjustable arms including an arm with a roll back feature
- Control Mechanisms: controls include active back and bio-sync options
- Bases: five-star swivel bases available in black nylon, polished aluminum and brushed aluminum
- Via Seating's comfort foam: a proprietary blend of high-density, injection-molded, closed-cell, cold-cured foam so durable and lasting it is backed by Via Seating's 12 year warranty
- Options available using stocked textiles on Quick Ship

VIA 48-HOUR MANUFACTURING TIME

10-15 chairs/48 hours

WARRANTY

12 years

GSA (CONTRACT #: GS-28F-005CA)

Yes, SIN# 33721

AVAILABLE ON SPEC IT?

Yes

AVAILABLE ON CET EXTENSION?

No

AVAILABLE ON 2020 & PROJECT MATRIX?

Yes

SUSTAINABILITY CERTS & INITIATIVES



## Design by Studio V

Studio V creates modern, sophisticated and original seating solutions that are ergonomic, beautiful and sustainable. This team of engineers, sustainability experts and designers is based in Reno, Nevada. Studio V develops products using a prototyping lab, the latest in 3D modeling software and a materials testing center.

**via**  
SEATING

SEATING SERIES | PUBLIC LIST PRICING  
GSA: YES, SIN# 33721 | MANUFACTURED IN U.S.A.

Quoting is easiest with Via Seating's Spec It custom build & quote tool. Get list pricing, chair renders, dimensions, symbols, user guides, a pdf quote & so much more all updatable in real time to your model selections. Check it out using the QR code >>



## 1. STARTING MODEL.



MODEL #	1803	1PTT-1803	2803
PRICE	<b>\$1069</b>	<b>\$1160</b>	<b>\$1174</b>
DESCRIPTION	Mid back, standard A seat	Mid back, petite A seat	Mid back, medium B seat
QUICK SHIP <sup>1</sup>	15/48: 15 chairs made in 48 hours.	15/48: 15 chairs made in 48 hours.	15/48: 15 chairs made in 48 hours.



MODEL #	1PTT-2803	3003
PRICE	<b>\$1265</b>	<b>\$1292</b>
DESCRIPTION	Mid back, petite B seat	Mid Back, large C seat
QUICK SHIP <sup>1</sup>	15/48: 15 chairs made in 48 hours.	15/48: 15 chairs made in 48 hours.

### NOTE 1: QUICK SHIP PROGRAM

All models using in-stock "quick ship" fabrics & in-stock "quick ship" options are able to be produced in a 48-hour manufacturing period on business days during business hours. The number of completed models listed are able to be produced in that 48-hour period. Note, we require 1 business day within business hours to process completed orders received and 1 day to ship out the order. Quick ship does not include delays from mills in supplying fabric, COM/COL/custom textiles, custom configurations or shipment time once the product ships out. As we understand not all products are needed on quick ship, please confirm your need by date on your quote or with your AM/CAS.

For project lead times, especially on products including this symbol  call us at 1-800-433-6614 or email your CAS support person at csnorth@viaseating.com, cssouth@viaseating.com, cswest@viaseating.com or cscanada@viaseating.com.

## 2. CHAIR OR STOOL CONTROL MECHANISM.



USE WITH	All models.	All models.	All models.	All models.	All models.
PART #	3C	3C-12SS	5C	5C-12SS	6C
PRICE	<b>+\$0</b>	<b>+\$122</b>	<b>+\$99</b>	<b>+\$221</b>	<b>+\$132</b>
DESCRIPTION	Standard Active back synchro	Active back synchro with seat depth adjustment	Advanced ergo synchro	Advanced ergo synchro with seat depth adjustment	Bio-sync synchro
PASSES	ANSI/BIFMA X5.1	ANSI/BIFMA X5.1	ANSI/BIFMA X5.1	ANSI/BIFMA X5.1	ANSI/BIFMA X5.1



USE WITH	All models.	AA, A, BB, B seats.	AA, A, BB, B seats.
PART #	6C-12SS	3C-11DR	3C-11XDR
PRICE	<b>+\$254</b>	<b>+\$205</b>	<b>+\$205</b>
DESCRIPTION	Bio-sync synchro with seat depth adjustment	Tall stool mechanism with 70" vertical travel	Extra-tall stool mechanism with 95" vertical travel
PASSES	ANSI/BIFMA X5.1	ANSI/BIFMA X5.1	ANSI/BIFMA X5.1

#### MAX WEIGHT CAPACITY PER MODEL-CONTROL.<sup>2</sup>

Model	3C	3C-12SS	5C	5C-12SS	6C	6C-12SS	3C-11DR	3C-11XDR
1803	350 lb	350 lb	300 lb	300 lb	300 lb	300 lb	300 lb	300 lb
1PTT-1803	350 lb	350 lb	300 lb	300 lb	300 lb	300 lb	300 lb	300 lb
2803	350 lb	350 lb	300 lb	300 lb	300 lb	300 lb	300 lb	300 lb
1PTT-2803	350 lb	350 lb	300 lb	300 lb	300 lb	300 lb	300 lb	300 lb
3003	350 lb	350 lb	300 lb	300 lb	300 lb	300 lb	N/A	N/A

NOTE 2: Exceeding the max weight stated is considered not safe & is a violation of a warranty where one is applicable. For inquiries regarding needs above these max weight capacities, please call 1-800-433-6614 or email your CAS support person at csnorth@viaseating.com, cssouth@viaseating.com, cswest@viaseating.com or cscanada@viaseating.com.

#### 3. ARM STYLE.



PART #	0A
PRICE	<b>+\$0</b>
DESCRIPTION	Standard armless



PART #	10A	18A	39A	51A	53A
PRICE	<b>+\$117</b>	<b>+\$158</b>	<b>+\$146</b>	<b>+\$117</b>	<b>+\$199</b>
MATERIAL	Nylon.	Nylon.	Nylon.	Polyurethane.	Aluminum.
DESCRIPTION	Black straight upright arm	Black full function arm	Black roll back arm	Black arm with 2D to up to 8D adjustments	Polished arm with 2D to up to 8D adjustments

### 3A. ARMREST STYLE.

pg 4 of 8



USE WITH	10A, 18A, 39A	10A, 18A, 39A	51A, 53A	51A, 53A
PART #	5	6	20S	20R
PRICE	<b>+\$0</b>	<b>+\$0</b>	<b>+\$0</b>	<b>+\$55</b>
MATERIAL	Polyurethane.	Polyurethane.	Polyurethane.	Polyurethane.
DESCRIPTION	Fixed black armrest	Fixed black armrest	Fixed black armrest	4D black armrest

### 3B. OPTIONAL ARM WIDTH ADJUSTMENT BRACKETS.

USE WITH	10A	18A	51A, 53A
PART #	20AB	20AB	19AB
PRICE	<b>+\$44</b>	<b>+\$0</b>	<b>+\$44</b>
DESCRIPTION	Arm width adjustment bracket (+2" per side)	Arm width adjustment bracket (+2" per side)	Arm width adjustment bracket (+2" per side)

### 4. BASE STYLE.



PART #	18BB	18PB	18BA
PRICE	<b>+\$0</b>	<b>+\$151</b>	<b>+\$151</b>
DESCRIPTION	Standard black nylon 5-star swivel base	Polished aluminum 5-star swivel base	Brushed aluminum 5-star swivel base
GASLIFT	G3A: Black.	G3A: Black.	G3A: Black.

### 4A. CASTER OR GLIDE STYLE.



PART #	16HP	16HP-SL1	16SCG	16SCG-SL1	16GL
PRICE	<b>+\$0</b>	<b>+\$38</b>	<b>+\$38</b>	<b>+\$76</b>	<b>+\$38</b>
DESCRIPTION	Black carpet-only casters	Black carpet-only casters with safety brake	Black-grey all-floor casters	Black-grey all-floor casters with safety brake	Black glides

## 5. OPTIONAL ADJUSTABLE LUMBAR.



PART #	12LUM
PRICE	<b>+\$151</b>
DESCRIPTION	Mechanical internal lumbar support with knob adjustment

## 6. OPTIONAL HEADREST.



PART #	HDR1
PRICE	<b>+\$264</b>
DESCRIPTION	This optional headrest allows you to adjust the position vertically by 2.5" of travel and tilt it from 5° forward to 40° rearward.

## 7. OPTIONAL BALLISTIC NYLON.



PART #	BALL1
PRICE	<b>+\$330</b>
DESCRIPTION	Ballistic Brisbane nylon protects your seat from safety, gun & utility belts. Pattern: half-moon nylon on back of seat, half-moon nylon on bottom of the back, nylon down sides of the back and seat. Available on mid backs.

## 8. OPTIONAL UPHOLSTERED BACKSHELL.



PART #	/	22UBF *	22UBL *
PRICE	<b>+\$0</b>	<b>+\$201</b>	<b>+\$237</b>
DESCRIPTION	Standard black plastic backshell	An upholstered backshell for fabrics & vinyls	An upholstered backshell for leathers

\* QUICK SHIP NOTE: Chairs with 22UBF or 22UBL are able to be produced at 10/48: 10 chairs made in 48 hours.



USE WITH	All models.	All models.
PART #	/	U2
PRICE	<b>+\$0</b>	<b>+\$0</b>
DESCRIPTION	Single upholstery.	Two-tone upholstery.
TEXTILES	1 textile.	2 textiles.

## OPTIONAL UPHOLSTERED AREAS



PART #	HDR1	20UBF / 20UBL
COM   COL	0.35 yd   2 sq ft	0.75 yd   6.1 sq ft
NOTE	Headrest matches back textile.	Backshell matches back textile.

## CALCULATING COM | COL MATERIAL LENGTH.

MODEL #	BACK & SEAT	BACK ONLY	SEAT ONLY	BACK, SEAT & BACKSHELL
1803	0.75 yd   12.9 sq ft	0.75 yd   6.43 sq ft	0.75 yd   6 sq ft	1.5 yd   19 sq ft
2803	0.75 yd   14.5 sq ft	0.75 yd   6.43 sq ft	0.75 yd   8.4 sq ft	1.5 yd   21.32 sq ft
3003	1 yd   15.6 sq ft	0.75 yd   6.43 sq ft	1 yd   9 sq ft	1.75 yd   21.6 sq ft

COM yardage shown in this price book is based on non-directional textiles with a width of 54". Fabrics less than 54" wide or those requiring matching stripes, prints, or matching large pattern designs will require additional material.

## COM WIDTH &amp; REPEAT TABLE

FABRIC WIDTH	NON-DIRECTIONAL FABRIC	PATTERNS CONTAINING STRIPES, PLAIDS OR PATTERNS WITH REPEATS			
		2" - 14" REPEAT: ADD FABRIC	15" - 24" REPEAT: ADD FABRIC	25" - 27" REPEAT: ADD FABRIC	28" - 36" REPEAT: ADD FABRIC
54"	0%	10%	15%	20%	25%
50"	10%	20%	25%	30%	35%
48"	15%	25%	30%	35%	45%
45"	40%	50%	55%	60%	65%
36"	50%	60%	65%	70%	75%

See page 18 for COM | COL guidance. We are happy to supply yardage requirement quotes for large quantity chair orders, as material efficiencies may be realized. Please call 1-800-433-6614 or email your CAS support person at [csnorth@viaseating.com](mailto:csnorth@viaseating.com), [cssouth@viaseating.com](mailto:cssouth@viaseating.com), [cswest@viaseating.com](mailto:cswest@viaseating.com) or [cscanada@viaseating.com](mailto:cscanada@viaseating.com).



MODEL #	GR A	GR B	GR 1	COM	GR 2	GR 3	COL	GR 4	GR 5	GR 6	GR 7	GR 8
1803	+\$0	+\$22	+\$44	+\$44	+\$86	+\$133	+\$133	+\$178	+\$245	+\$334	+\$511	+\$766
2803	+\$0	+\$22	+\$44	+\$44	+\$86	+\$133	+\$133	+\$178	+\$245	+\$334	+\$511	+\$766
3003	+\$0	+\$24	+\$48	+\$48	+\$115	+\$158	+\$158	+\$247	+\$332	+\$424	+\$673	+\$973

## OPTIONAL UPHOLSTERED AREAS.

PART #	GR A	GR B	GR 1	COM	GR 2	GR 3	COL	GR 4	GR 5	GR 6	GR 7	GR 8
HDR1	+\$0	+\$0	+\$0	+\$0	+\$0	+\$0	+\$0	+\$0	+\$41	+\$41	+\$41	+\$41

DIRECTION: For each textile in your model string, list grade letter or number followed by (mill, pattern & colorway). Note, grading scale goes up from A (lowest priced textile) to B to one (1) through eight (8).

NOTE 4: When multiple textiles are specified, the highest grade will be used for the total textile price calculation.

## 10. PACKAGING.

PART #	PRICE	DESCRIPTION
9FA	+\$0	95% ASSEMBLED: Product ships 95% assembled. No tools required.
FA	+\$95	FULLY ASSEMBLED: Product ships fully assembled in the box.
BW	CALL	BLANKET WRAPPED: Product ships blanket wrapped. Minimum order quantity 150. Call us for pricing 1-800-433-6614.

## BUILD YOUR MODEL STRING

1	2	3	3A	3B	4	4A	5	6	7	8	9	9A	10
---	---	---	----	----	---	----	---	---	---	---	---	----	----

1	STARTING MODEL.	4A	CASTER OR GLIDE STYLE.	9A	TEXTILE(S): GRADE, MILL,
2	CONTROL MECHANISM.	5	+ ADJUSTABLE LUMBAR SUPPORT.		PATTERN & COLORWAY
3	ARM STYLE.	6	+ ADJUSTABLE HEADREST.		PER TEXTILE.
3A	+ ARMREST STYLE.	7	+ BALLISTIC NYLON.	10	PACKAGING.
3B	+ ARM WIDTH ADJUSTMENT.	8	+ UPHOLSTERED BACKSHELL.		
4	BASE STYLE.	9	UPHOLSTERY LAYOUT.		

## QUOTING IS EASY WITH SPEC IT BUILD &amp; QUOTE

Visit Spec It (<https://viaseating.com/spec-it/>) to build & price your desired model easily. Via Seating's custom design & quote tool features the ability to select & render an image of your desired chair in 4K photo realism with a click & zoom feature. Download an image of your model in multiple resolutions. View a part break out with pricing listed out per option. View dimensions that update based on the model you select. Download autoCAD & revit, view user guides & videos, download assembly instructions & so much more that all update in realtime to your model selections.

Visit <https://viaseating.com/spec-it/#/brisbane> or scan the QR code:





# Carmel

executive, management, conference, execu-task, jury seating

NEW OPTIONS



## Key Features

- Backrests: high or mid backs available in split or single shell forms
- Stitching: unique, tuxedo-style stitching with choice of adding executive diamond stitching to the headrests
- Via Seating's comfort foam: a proprietary blend of high-density, injection-molded, closed-cell, cold-cured comfort foam so durable and lasting it is backed by Via Seating's 12 year warranty
- Arms: height adjustable and fixed options
- Control mechanisms: choices include synchro and knee tilt mechanisms
- Bases: five-star bases available in black nylon, polished aluminum and brushed aluminum finishes
- Jury seating: optional jury base on mid backs featuring height adjustment, 360 degree swivel and no weight return-to-center & return to max height
- Options available using stocked textiles on Quick Ship

VIA 48-HOUR MANUFACTURING TIME

2-10 chairs/48 hours

WARRANTY

12 years

GSA (CONTRACT #: GS-28F-005CA)

Yes, SIN# 33721

AVAILABLE ON SPEC IT?

Yes

AVAILABLE ON CET EXTENSION?

Yes

AVAILABLE ON 2020 & PROJECT MATRIX?

Yes

SUSTAINABILITY CERTS & INITIATIVES



## Design by Studio V

Studio V creates modern, sophisticated and original seating solutions that are ergonomic, beautiful and sustainable. This team of engineers, sustainability experts and designers is based in Reno, Nevada. Studio V develops products using a prototyping lab, the latest in 3D modeling software and a materials testing center.

**via**  
SEATING

Quoting is easiest with Via Seating's Spec It custom build & quote tool. Get list pricing, chair renders, dimensions, symbols, user guides, a pdf quote & so much more all updatable in real time to your model selections. Check it out using the QR code >>



## 1. STARTING MODEL.



MODEL #	6901	6903
PRICE	<b>\$1298</b>	<b>\$1514</b>
DESCRIPTION	Mid back, split or single shell	High back, split or single shell
QUICK SHIP <sup>1</sup>	10/48: 10 chairs made in 48 hours.	10/48: 10 chairs made in 48 hours.

### NOTE 1: QUICK SHIP PROGRAM






All models using in-stock "quick ship" fabrics & in-stock "quick ship" options are able to be produced in a 48-hour manufacturing period on business days during business hours. The number of completed models listed are able to be produced in that 48-hour period. Note, we require 1 business day within business hours to process completed orders received and 1 day to ship out the order. Quick ship does not include delays from mills in supplying fabric, COM/COL/custom textiles, custom configurations or shipment time once the product ships out. As we understand not all products are needed on quick ship, please confirm your need by date on your quote or with your AM/CAS.

For project lead times, especially on products including this symbol  call us at 1-800-433-6614 or email your CAS support person at csnorth@viaseating.com, cssouth@viaseating.com, cswest@viaseating.com or cscanada@viaseating.com.

## 2. OPTIONAL HEIGHT ADJUSTABLE BACK.

PART #	RB
PRICE	<b>+\$199</b>
DESCRIPTION	Adjustable height option on split back chairs Standard backs are fixed

## 3. CHAIR CONTROL MECHANISM.

					
USE WITH	All models.	All models.	All models.	All models.	All models.
PART #	71C * NEW	42C NEW	67C	67C-SS	67C-SS-FT
PRICE	<b>+\$0</b>	<b>+\$160</b>	<b>+\$257</b>	<b>+\$379</b>	<b>+\$433</b>
DESCRIPTION	Standard basic tilt mechanism	Dynamic knee tilt mechanism	Quick adjust advanced synchro	Quick adjust advanced synchro with seat depth	Quick adjust advanced synchro with seat depth
PASSES	ANSI/BIFMA X5.1	ANSI/BIFMA X5.1	ANSI/BIFMA X5.1	ANSI/BIFMA X5.1	ANSI/BIFMA X5.1

\* Note, original 11C control is still available while supplies last. Please contact your CAS person with inquiries.

## MAX WEIGHT CAPACITY PER MODEL-CONTROL<sup>2</sup>

Model	42C	71C	67C	67C-SS	67C-SS-FT	11C-20JRY	71C-20JRY
6901	300 lb	300 lb	350 lb	350 lb	350 lb	300 lb	300 lb
6903	300 lb	300 lb	350 lb	350 lb	350 lb	N/A	N/A

NOTE 2: Exceeding the max weight stated is considered not safe & is a violation of a warranty where one is applicable. For inquiries regarding needs above these max weight capacities, please call 1-800-433-6614 or email your CAS support person at csnorth@viaseating.com, cssouth@viaseating.com, cswest@viaseating.com or cscanada@viaseating.com.

4. ARM STYLE.



PART #	0A
PRICE	<b>+\$0</b>
DESCRIPTION	Standard armless



PART #	51A	53A
PRICE	<b>+\$117</b>	<b>+\$199</b>
MATERIAL	Polyurethane.	Aluminum.
DESCRIPTION	Black arm with 2D to up to 8D adjustments	Polished arm with 2D to up to 8D adjustments



NEW



NEW

PART #	80A	90A	96A	97A
PRICE	<b>+\$284</b>	<b>+\$392</b>	<b>+\$218</b>	<b>+\$298</b>
MATERIAL	Polyurethane.	Polyurethane.	Polyurethane.	Aluminum.
DESCRIPTION	Black fixed C arm	Upholstered fixed C arm	Black fixed cantilever arm	Polished fixed cantilever arm & black armrest

4A. ARMREST STYLE.



USE WITH	51A, 53A	51A, 53A
PART #	20S	20R
PRICE	<b>+\$0</b>	<b>+\$55</b>
MATERIAL	Polyurethane.	Polyurethane.
DESCRIPTION	Fixed black armrest	4D black armrest

4B. OPTIONAL ARM WIDTH ADJUSTMENT BRACKETS.

USE WITH	51A, 53A
PART #	19AB
PRICE	<b>+\$44</b>
DESCRIPTION	Arm width adjustment bracket (+2" per side)

## 5. BASE STYLE.

pg 4 of 6



PART #	18BB	18PB	18BA	20JRY
PRICE	<b>+\$0</b>	<b>+\$151</b>	<b>+\$151</b>	<b>+\$403</b>
DESCRIPTION	Standard black nylon 5-star swivel base	Polished aluminum 5-star swivel base	Brushed aluminum 5-star swivel base	Black 12" diameter die-casted aluminum height adjustable, no weight return-to-center & return-to-max-height jury base
GASLIFT	G3A: Black.	G3A: Black.	G3A: Black.	/

## 5A. 5-STAR BASES: CASTER OR GLIDE STYLE.



PART #	16HP	16HP-SL1	16SCG	16SCG-SL1	16GL
PRICE	<b>+\$0</b>	<b>+\$38</b>	<b>+\$38</b>	<b>+\$76</b>	<b>+\$38</b>
DESCRIPTION	Black carpet-only casters	Black carpet-only casters with safety brake	Black-grey all-floor casters	Black-grey all-floor casters with safety brake	Black glides

## 6. OPTIONAL ADJUSTABLE LUMBAR.

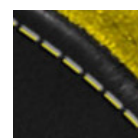
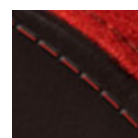
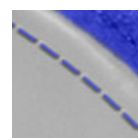
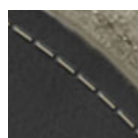
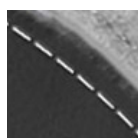
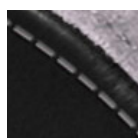
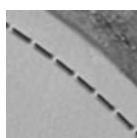
USE WITH	Fixed backs.
PART #	12LUM
PRICE	<b>+\$151</b>
DESCRIPTION	Mechanical internal lumbar support with knob adjustment

## 7. OPTIONAL DIAMOND STITCH.

PART #	EDS *
PRICE	<b>+\$264</b>
DESCRIPTION	Executive diamond stitch places a distinct diamond pattern on the front of the headrest or headrest area.
NOTE	For testing on fabrics & vinyls, please contact CAS.

\* QUICK SHIP NOTE: Chairs with EDS are able to be produced at 5/48: 5 chairs made in 48 hours.

## 7A. OPTIONAL EMPHASIZED STITCH THREAD COLOR.



PART #	CTS-03	CTS-05	CTS-04	CTS-06	CTS-07	CTS-09	CTS-08	CTS-10
PRICE	<b>+\$0</b>	<b>+\$0</b>	<b>+\$0</b>	<b>+\$0</b>	<b>+\$0</b>	<b>+\$0</b>	<b>+\$0</b>	<b>+\$0</b>
DESCRIPTION	Black	Grey	White	Cream	Chocolate	Blue	Red	Yellow
NOTE	Standard thread color without emphasized stitch is a tonal match to the textile(s) selected.							



USE WITH	All models.
PART #	/
PRICE	<b>+\$0</b>
DESCRIPTION	Single upholstery.
TEXTILES	1 textile.

## OPTIONAL UPHOLSTERED AREAS



PART #	90A
COM   COL	1.25 yd   8 sq ft
NOTE	Arm matches back textile.

## CALCULATING COM | COL MATERIAL LENGTH.

MODEL #	BACK & SEAT
6901	2 yd   29.25 sq ft
6903	2 yd   31.72 sq ft

COM yardage shown in this price book is based on non-directional textiles with a width of 54". Fabrics less than 54" wide or those requiring matching stripes, prints, or matching large pattern designs will require additional material.

## COM WIDTH &amp; REPEAT TABLE

FABRIC WIDTH	NON-DIRECTIONAL FABRIC	PATTERNS CONTAINING STRIPES, PLAIDS OR PATTERNS WITH REPEATS			
		2" - 14" REPEAT: ADD FABRIC	15" - 24" REPEAT: ADD FABRIC	25" - 27" REPEAT: ADD FABRIC	28" - 36" REPEAT: ADD FABRIC
54"	0%	10%	15%	20%	25%
50"	10%	20%	25%	30%	35%
48"	15%	25%	30%	35%	45%
45"	40%	50%	55%	60%	65%
36"	50%	60%	65%	70%	75%

See page 18 for COM | COL guidance. We are happy to supply yardage requirement quotes for large quantity chair orders, as material efficiencies may be realized. Please call 1-800-433-6614 or email your CAS support person at [csnorth@viaseating.com](mailto:csnorth@viaseating.com), [cssouth@viaseating.com](mailto:cssouth@viaseating.com), [cswest@viaseating.com](mailto:cswest@viaseating.com) or [cscanada@viaseating.com](mailto:cscanada@viaseating.com).

## 8A. TEXTILE(S).

MODEL #	GR A	GR B	GR 1	COM	GR 2	GR 3	COL	GR 4	GR 5	GR 6	GR 7	GR 8
6901	<b>+\$0</b>	<b>+\$36</b>	<b>+\$105</b>	<b>+\$105</b>	<b>+\$158</b>	<b>+\$248</b>	<b>+\$248</b>	<b>+\$357</b>	<b>+\$480</b>	<b>+\$641</b>	<b>+\$833</b>	<b>+\$1082</b>
6903	<b>+\$0</b>	<b>+\$44</b>	<b>+\$114</b>	<b>+\$114</b>	<b>+\$167</b>	<b>+\$255</b>	<b>+\$255</b>	<b>+\$365</b>	<b>+\$489</b>	<b>+\$648</b>	<b>+\$843</b>	<b>+\$1088</b>

OPTIONAL UPHOLSTERED AREAS<sup>3</sup>

PART #	GR A	GR B	GR 1	COM	GR 2	GR 3	COL	GR 4	GR 5	GR 6	GR 7	GR 8
90A	<b>+\$0</b>	<b>+\$2</b>	<b>+\$4</b>	<b>+\$4</b>	<b>+\$9</b>	<b>+\$12</b>	<b>+\$12</b>	<b>+\$24</b>	<b>+\$28</b>	<b>+\$38</b>	<b>+\$53</b>	<b>+\$66</b>

DIRECTION: For each textile in your model string, list grade letter or number followed by (mill, pattern & colorway). Note, grading scale goes up from A (lowest priced textile) to B to one (1) through eight (8).

NOTE 3: Chairs with -90A are able to be produced at 2/48: 2 chairs made in 48 hours.

PART #	PRICE	DESCRIPTION
9FA	<b>+\$0</b>	95% ASSEMBLED: Product ships 95% assembled. No tools required.
FA	<b>+\$95</b>	FULLY ASSEMBLED: Product ships fully assembled in the box.
BW	<b>CALL</b>	BLANKET WRAPPED: Product ships blanket wrapped. Minimum order quantity 150. Call us for pricing 1-800-433-6614.

## BUILD YOUR MODEL STRING

\_\_\_\_\_  
 1            2            3            4            4A            4B            5            5A            6            7            7A            8            8A            9

- |    |                           |    |                              |    |                          |
|----|---------------------------|----|------------------------------|----|--------------------------|
| 1  | STARTING MODEL.           | 5  | BASE STYLE.                  | 8A | TEXTILE(S): GRADE, MILL, |
| 2  | + HEIGHT ADJUSTABLE BACK. | 5A | CASTER OR GLIDE STYLE.       |    | PATTERN & COLORWAY       |
| 3  | CONTROL MECHANISM.        | 6  | + ADJUSTABLE LUMBAR SUPPORT. |    | PER TEXTILE.             |
| 4  | ARM STYLE.                | 7  | + DIAMOND STITCH.            | 9  | PACKAGING.               |
| 4A | + ARMREST STYLE.          | 7A | + EMPHASIZED STITCH.         |    |                          |
| 4B | + ARM WIDTH ADJUSTMENT.   | 8  | UPHOLSTERY LAYOUT.           |    |                          |

## QUOTING IS EASY WITH SPEC IT BUILD &amp; QUOTE

Visit Spec It (<https://viaseating.com/spec-it/>) to build & price your desired model easily. Via Seating's custom design & quote tool features the ability to select & render an image of your desired chair in 4K photo realism with a click & zoom feature. Download an image of your model in multiple resolutions. View a part break out with pricing listed out per option. View dimensions that update based on the model you select. Download autoCAD & revit, view user guides & videos, download assembly instructions & so much more that all update in realtime to your model selections.

Visit <https://viaseating.com/spec-it/#/carmel> or scan the QR code:





# Chico

chairs, lounge, collaborative, lobby, executive guest



## Key Features

- Styles: profile shaped at a pleasing angle designed to let you sit freely from any direction
- Wedge shapes: option to upholster the semi-circles in a different fabric
- Bases: a variety of styles in polished, matte black and silver finishes
- Via Seating's comfort foam: a proprietary blend of high-density, injection-molded, closed-cell, cold-cured comfort foam
- Specify On: Spec It, Project Matrix, 2020 ("CAP/GIZA"), KITS Collaborator & CET Designer
- On contract #GS-28F-005CA with GSA
- Options available on Quick Ship

VIA 48-HOUR MANUFACTURING TIME

5 models/48 hours

WARRANTY

6 years

GSA (CONTRACT #: GS-28F-005CA)

Yes, SIN# 33721

AVAILABLE ON SPEC IT?

Yes

AVAILABLE ON CET EXTENSION?

Yes

AVAILABLE ON 2020 & PROJECT MATRIX?

Yes

SUSTAINABILITY CERTS & INITIATIVES



## Design by Hindenes, Berg & Knudsen

Studio KBH is made up of designers Steinar Hindenes, Anders Berg, Petter Knudsen. The trio were all educated at Bergen Academy of Art and Design. KBH mainly works with furniture, product and interior designs, but is also involved in a series of project based design initiatives. In partnership with manufacturers, they aim to create material and production driven objects with a distinct character.

**via**  
SEATING

# Chico: benches

SEATING SERIES | PUBLIC LIST PRICING

GSA: YES, SIN# 33721. | MANUFACTURED IN U.S.A.

pg 2 of 12

Quoting is easiest with Via Seating's Spec It custom build & quote tool. Get list pricing, chair renders, dimensions, symbols, user guides, a pdf quote & so much more all updatable in real time to your model selections. Check it out using the QR code >>



## 1. STARTING MODEL.



MODEL #	974	976
PRICE	<b>\$2935</b>	<b>\$3264</b>
DESCRIPTION	Soft seating 40 in long bench.	Soft seating 60 in long bench.
QUICK SHIP <sup>1</sup>	5/48: 5 benches made in 48 hours.	5/48: 5 benches made in 48 hours.

### NOTE 1: QUICK SHIP PROGRAM

All models using in-stock "quick ship" fabrics & in-stock "quick ship" options are able to be produced in a 48-hour manufacturing period on business days during business hours. The number of completed models listed are able to be produced in that 48-hour period. Note, we require 1 business day within business hours to process completed orders received and 1 day to ship out the order. Quick ship does not include delays from mills in supplying fabric, COM/COL/custom textiles, custom configurations or shipment time once the product ships out. As we understand not all products are needed on quick ship, please confirm your need by date on your quote or with your AM/CAS.

For project lead times, especially on products including this symbol  call us at 1-800-433-6614 or email your CAS support person at csnorth@viaseating.com, cssouth@viaseating.com, cswest@viaseating.com or cscanada@viaseating.com.

## 2. BASE STYLE.



PART #	3POL
PRICE	<b>+\$0</b>
DESCRIPTION	Polished loop leg.

### MAX WEIGHT CAPACITY PER MODEL-BASE.<sup>2</sup>

Model	3BRU	3POL
974	1000 lb	1000 lb
976	2000 lb	2000 lb

NOTE 2: Exceeding the max weight stated is considered not safe & is a violation of a warranty where one is applicable. For inquiries regarding needs above these max weight capacities, please call 1-800-433-6614 or email your CAS support person at csnorth@viaseating.com, cssouth@viaseating.com, cswest@viaseating.com or cscanada@viaseating.com.

## 3. OPTIONAL EMPHASIZED STITCH THREAD COLOR.<sup>3</sup>



PART #	CTS-03	CTS-05	CTS-04	CTS-06	CTS-07	CTS-09	CTS-08	CTS-10
PRICE	<b>+\$0</b>	<b>+\$0</b>	<b>+\$0</b>	<b>+\$0</b>	<b>+\$0</b>	<b>+\$0</b>	<b>+\$0</b>	<b>+\$0</b>
DESCRIPTION	Black.	Grey.	White.	Cream.	Chocolate.	Blue.	Red.	Yellow.
NOTE	Standard thread color without emphasized stitch is a tonal match to the textile(s) selected.							

NOTE 3: Material images are representational. Lighting, paper type, monitor screen settings and other factors can alter the appearance of any material (frame color, mesh color, poly color, etc) sometimes significantly. To best compare a material to the setting it will be used in, please request a free sample of the material at [samples.viaseating.com](https://samples.viaseating.com).

#### 4. UPHOLSTERY LAYOUT.



USE WITH	All models.	974	976
PART #	/	U4	U5
PRICE	<b>+\$0</b>	<b>+\$0</b>	<b>+\$0</b>
DESCRIPTION	Single upholstery.	Four-tone upholstery.	Five-tone upholstery.
TEXTILES	1 textile.	4 textiles.	5 textiles.

#### CALCULATING COM | COL MATERIAL LENGTH.

MODEL #	WHOLE BENCH	EACH SEAT	EACH WEDGE
974	1.5 yd   23 sq ft	0.7 yd   9.7 sq ft	0.15 yd   1 sq ft
976	2 yd   32 sq ft	0.7 yd   9.7 sq ft	0.15 yd   1 sq ft

COM yardage shown in this price book is based on non-directional textiles with a width of 54". Fabrics less than 54" wide or those requiring matching stripes, prints, or matching large pattern designs will require additional material.

#### COM WIDTH & REPEAT TABLE

FABRIC WIDTH	NON-DIRECTIONAL FABRIC	PATTERNS CONTAINING STRIPES, PLAIDS OR PATTERNS WITH REPEATS			
		2" - 14" REPEAT: ADD FABRIC	15" - 24" REPEAT: ADD FABRIC	25" - 27" REPEAT: ADD FABRIC	28" - 36" REPEAT: ADD FABRIC
54"	0%	10%	15%	20%	25%
50"	10%	20%	25%	30%	35%
48"	15%	25%	30%	35%	45%
45"	40%	50%	55%	60%	65%
36"	50%	60%	65%	70%	75%

See page 18 for COM | COL guidance. We are happy to supply yardage requirement quotes for large quantity chair orders, as material efficiencies may be realized. Please call 1-800-433-6614 or email your CAS support person at [csnorth@viaseating.com](mailto:csnorth@viaseating.com), [cssouth@viaseating.com](mailto:cssouth@viaseating.com), [cswest@viaseating.com](mailto:cswest@viaseating.com) or [cscanada@viaseating.com](mailto:cscanada@viaseating.com).

#### 4A. TEXTILE(S).<sup>4</sup>

MODEL #	GR A	GR B	GR 1	COM	GR 2	GR 3	COL	GR 4	GR 5	GR 6	GR 7	GR 8
974	<b>+\$0</b>	<b>+\$139</b>	<b>+\$284</b>	<b>+\$284</b>	<b>+\$492</b>	<b>+\$715</b>	<b>+\$715</b>	<b>+\$955</b>	<b>+\$1281</b>	<b>+\$1639</b>	<b>+\$2232</b>	<b>+\$2912</b>
976	<b>+\$0</b>	<b>+\$157</b>	<b>+\$326</b>	<b>+\$326</b>	<b>+\$561</b>	<b>+\$818</b>	<b>+\$818</b>	<b>+\$1095</b>	<b>+\$1467</b>	<b>+\$1875</b>	<b>+\$2553</b>	<b>+\$3330</b>

DIRECTION: For each textile in your model string, list grade letter or number followed by (mill, pattern & colorway). Note, grading scale goes up from A (lowest priced textile) to B to one (1) through eight (8).

NOTE 4: When multiple textiles are specified, the highest grade will be used for the total textile price calculation.