

MODEL #	GR A	GR B	GR 1	COM	GR 2	GR 3	COL	GR 4	GR 5	GR 6	GR 7	GR 8
210	+\$0	+\$45	+\$120	+\$120	+\$175	+\$250	+\$250	+\$330	+\$405	+\$525	+\$650	+\$840
211	+\$0	+\$45	+\$120	+\$120	+\$175	+\$250	+\$250	+\$330	+\$405	+\$525	+\$650	+\$840
215	+\$0	+\$55	+\$140	+\$140	+\$205	+\$300	+\$300	+\$400	+\$495	+\$650	+\$810	+\$1065
216	+\$0	+\$55	+\$140	+\$140	+\$205	+\$300	+\$300	+\$400	+\$495	+\$650	+\$810	+\$1065

DIRECTION: For each textile in your model string, list grade letter or number followed by (mill, pattern & colorway). Note, grading scale goes up from A (lowest priced textile) to B to one (1) through eight (8).

7. PACKAGING.

PART #	PRICE	DESCRIPTION
9FA	+\$0	95% ASSEMBLED: Product ships 95% assembled. No tools required.
FA	+\$95	FULLY ASSEMBLED: Product ships fully assembled in the box.
BW	CALL	BLANKET WRAPPED: Product ships blanket wrapped. Minimum order quantity 150. Call us for pricing 1-800-433-6614.

BUILD YOUR MODEL STRING

_____ - _____ - _____ - _____ - _____ - _____ - _____
 1 2 3 4 4A 5 6 6A 7

- | | | | | | |
|---|--------------------|----|------------------------|----|--------------------------|
| 1 | STARTING MODEL. | 4A | CASTER OR GLIDE STYLE. | 6A | TEXTILE(S): GRADE, MILL, |
| 2 | CONTROL MECHANISM. | 5 | + EMPHASIZED STITCH. | | PATTERN & COLORWAY |
| 3 | ARM STYLE. | 6 | UPHOLSTERY LAYOUT. | | PER TEXTILE. |
| 4 | BASE STYLE. | | | 7 | PACKAGING. |

QUOTING IS EASY WITH SPEC IT BUILD & QUOTE

Visit Spec It (<https://viaseating.com/spec-it/>) to build & price your desired model easily. Via Seating's custom design & quote tool features the ability to select & render an image of your desired chair in 4K photo realism with a click & zoom feature. Download an image of your model in multiple resolutions. View a part break out with pricing listed out per option. View dimensions that update based on the model you select. Download autoCAD & revit, view user guides & videos, download assembly instructions & so much more that all update in realtime to your model selections.

Visit <https://viaseating.com/spec-it/#/jete> or scan the QR code:



Linate

executive, management, conference, execu-task, jury seating

NEW OPTIONS



Key Features

- Breadth of Line: high back, mid back and a jury chair
- Backrest: high backs available in split or single shell forms, mid backs available in single shells
- Stitching: distinguished stitching on the front and back
- Arms: choices include ergonomic 8D adjustable arms or executive "C" shape fixed arms in black polyurethane or upholstery
- Control Mechanisms: controls include single position knee tilt & synchro controls
- Bases: five-star swivel bases available in black nylon, polished aluminum and brushed aluminum
- Via Seating's comfort foam: a proprietary blend of high-density, injection-molded, closed-cell, cold-cured foam so durable and lasting it is backed by Via Seating's 12 year warranty
- Options available using stocked textiles on Quick Ship

VIA 48-HOUR MANUFACTURING TIME

2-10 chairs/48 hours

WARRANTY

12 years

GSA (CONTRACT #: GS-28F-005CA)

Yes, SIN# 33721

AVAILABLE ON SPEC IT?

Yes

AVAILABLE ON CET EXTENSION?

No, pending

AVAILABLE ON 2020 & PROJECT MATRIX?

Yes

SUSTAINABILITY CERTS & INITIATIVES



Design by Studio V & Ed Abadie

Via Seating's quintessential execu-task series Linate & Oslo were designed in a collaboration between Studio V and Ed Abadie (ABA Design). These chairs feature Via Seating's comfort foam, an automobile-inspired, lasting steel framework and hand-manufactured, fine stitching.

via
SEATING

SEATING SERIES | PUBLIC LIST PRICING
GSA: YES, SIN# 33721. | MANUFACTURED IN U.S.A.

Quoting is easiest with Via Seating's Spec It custom build & quote tool. Get list pricing, chair renders, dimensions, symbols, user guides, a pdf quote & so much more all updatable in real time to your model selections. Check it out using the QR code >>



1. STARTING MODEL.



MODEL #	5501	5503
PRICE	\$1469	\$1990
DESCRIPTION	Mid back	High back, split or single shell
QUICK SHIP ¹	10/48: 10 chairs made in 48 hours.	10/48: 10 chairs made in 48 hours.

NOTE 1: QUICK SHIP PROGRAM

All models using in-stock "quick ship" fabrics & in-stock "quick ship" options are able to be produced in a 48-hour manufacturing period on business days during business hours. The number of completed models listed are able to be produced in that 48-hour period. Note, we require 1 business day within business hours to process completed orders received and 1 day to ship out the order. Quick ship does not include delays from mills in supplying fabric, COM/COL/custom textiles, custom configurations or shipment time once the product ships out. As we understand not all products are needed on quick ship, please confirm your need by date on your quote or with your AM/CAS.

For project lead times, especially on products including this symbol  call us at 1-800-433-6614 or email your CAS support person at csnorth@viaseating.com, cssouth@viaseating.com, cswest@viaseating.com or cscanada@viaseating.com.

2. CONTROL MECHANISM.



USE WITH	All single shells.	All single shells.	All split shells.	All split shells.	All split shells.
PART #	71C * NEW	42C NEW	67C	67C-SS	67C-SS-FT
PRICE	+\$0	+\$160	+\$257	+\$379	+\$433
DESCRIPTION	Standard basic tilt mechanism	Dynamic knee tilt mechanism	Quick adjust advanced synchro	Quick adjust advanced synchro with seat depth adjustment	Quick adjust advanced synchro with seat depth and forward tilt adjustments
PASSES	ANSI/BIFMA X5.1	ANSI/BIFMA X5.1	ANSI/BIFMA X5.1	ANSI/BIFMA X5.1	ANSI/BIFMA X5.1

* Note, original 11C control is still available while supplies last. Please contact your CAS person with inquiries.

MAX WEIGHT CAPACITY PER MODEL-CONTROL.²

Model	42C	71C	67C	67C-SS	67C-SS-FT	11C-20JRY	71C-20JRY
5501	300 lb	300 lb	350 lb	350 lb	350 lb	300 lb	300 lb
5503	300 lb	300 lb	350 lb	350 lb	350 lb	N/A	N/A

NOTE 2: Exceeding the max weight stated is considered not safe & is a violation of a warranty where one is applicable. For inquiries regarding needs above these max weight capacities, please call 1-800-433-6614 or email your CAS support person at csnorth@viaseating.com, cssouth@viaseating.com, cswest@viaseating.com or cscanada@viaseating.com.

3. ARM STYLE.



PART #	0A
PRICE	+\$0
DESCRIPTION	Standard armless



PART #	51A	53A
PRICE	+\$117	+\$199
MATERIAL	Polyurethane.	Aluminum.
DESCRIPTION	Black arm with 2D to up to 8D adjustments	Polished arm with 2D to up to 8D adjustments



NEW



NEW

PART #	80A	90A	96A	97A
PRICE	+\$284	+\$392	+\$218	+\$298
MATERIAL	Polyurethane.	Polyurethane.	Polyurethane.	Aluminum.
DESCRIPTION	Black fixed C arm	Upholstered fixed C arm	Black fixed cantilever arm	Polished fixed cantilever arm & black armrest

3A. ARMREST STYLE.



USE WITH	51A, 53A	51A, 53A
PART #	20S	20R
PRICE	+\$0	+\$55
MATERIAL	Polyurethane.	Polyurethane.
DESCRIPTION	Fixed black armrest	4D black armrest

3B. OPTIONAL ARM WIDTH ADJUSTMENT BRACKETS.

USE WITH	51A, 53A
PART #	19AB
PRICE	+\$44
DESCRIPTION	Arm width adjustment bracket (+2" per side)

4. BASE STYLE.

pg 4 of 6



PART #	18BB	18PB	18BA	20JRY
PRICE	+\$0	+\$151	+\$151	+\$403
DESCRIPTION	Standard black nylon 5-star swivel base	Polished aluminum 5-star swivel base	Brushed aluminum 5-star swivel base	Black 12" diameter die-casted aluminum height adjustable, no weight return-to-center & return-to-max-height jury base
GASLIFT	G3A: Black.	G3A: Black.	G3A: Black.	/

4A. 5-STAR BASES: CASTER OR GLIDE STYLE.



PART #	16HP	16HP-SL1	16SCG	16SCG-SL1	16GL
PRICE	+\$0	+\$38	+\$38	+\$76	+\$38
DESCRIPTION	Black carpet-only casters	Black carpet-only casters with safety brake	Black-grey all-floor casters	Black-grey all-floor casters with safety brake	Black glides

5. OPTIONAL ADJUSTABLE LUMBAR SUPPORT.

PART #	12LUM
PRICE	+\$151
DESCRIPTION	Mechanical internal lumbar support with knob adjustment



USE WITH	All models.
PART #	/
PRICE	+\$0
DESCRIPTION	Single upholstery.
TEXTILES	1 textile.

OPTIONAL UPHOLSTERED AREAS



CALCULATING COM | COL MATERIAL LENGTH.

MODEL #	BACK & SEAT
5501	1.75 yd 25 sq ft
5503	2.25 yd 31.6 sq ft

PART #	90A
COM COL	1.25 yd 8 sq ft
NOTE	Arm matches

COM yardage shown in this price book is based on non-directional textiles with a width of 54". Fabrics less than 54" wide or those requiring matching stripes, prints, or matching large pattern designs will require additional material.

COM WIDTH & REPEAT TABLE

FABRIC WIDTH	NON-DIRECTIONAL FABRIC	PATTERNS CONTAINING STRIPES, PLAIDS OR PATTERNS WITH REPEATS			
		2" - 14" REPEAT: ADD FABRIC	15" - 24" REPEAT: ADD FABRIC	25" - 27" REPEAT: ADD FABRIC	28" - 36" REPEAT: ADD FABRIC
54"	0%	10%	15%	20%	25%
50"	10%	20%	25%	30%	35%
48"	15%	25%	30%	35%	45%
45"	40%	50%	55%	60%	65%
36"	50%	60%	65%	70%	75%

See page 18 for COM | COL guidance. We are happy to supply yardage requirement quotes for large quantity chair orders, as material efficiencies may be realized. Please call 1-800-433-6614 or email your CAS support person at csnorth@viaseating.com, cssouth@viaseating.com, cswest@viaseating.com or cscanada@viaseating.com.

6A. TEXTILE.

MODEL #	GR A	GR B	GR 1	COM	GR 2	GR 3	COL	GR 4	GR 5	GR 6	GR 7	GR 8
5501	+\$0	+\$31	+\$115	+\$115	+\$162	+\$245	+\$245	+\$358	+\$470	+\$651	+\$847	+\$1087
5503	+\$0	+\$36	+\$130	+\$130	+\$186	+\$278	+\$278	+\$408	+\$536	+\$742	+\$967	+\$1244

OPTIONAL UPHOLSTERED AREAS³

PART #	GR A	GR B	GR 1	COM	GR 2	GR 3	COL	GR 4	GR 5	GR 6	GR 7	GR 8
90A	+\$0	+\$2	+\$4	+\$4	+\$9	+\$12	+\$12	+\$24	+\$28	+\$38	+\$53	+\$66

DIRECTION: For each textile in your model string, list grade letter or number followed by (mill, pattern & colorway). Note, grading scale goes up from A (lowest priced textile) to B to one (1) through eight (8).

NOTE 3: Chairs with -90A are able to be produced at 2/48: 2 chairs made in 48 hours.

PART #	PRICE	DESCRIPTION
9FA	+\$0	95% ASSEMBLED: Product ships 95% assembled. No tools required.
FA	+\$95	FULLY ASSEMBLED: Product ships fully assembled in the box.
BW	CALL	BLANKET WRAPPED: Product ships blanket wrapped. Minimum order quantity 150. Call us for pricing 1-800-433-6614.

BUILD YOUR MODEL STRING

1 - 2 - 3 3A 3B - 4 - 4A - 5 - 6 - 6A - 7

- | | | | | | |
|----|-------------------------|----|------------------------|----|-----------------------|
| 1 | STARTING MODEL. | 4 | BASE STYLE. | 6A | TEXTILE: GRADE, MILL, |
| 2 | CONTROL MECHANISM. | 4A | CASTER OR GLIDE STYLE. | | PATTERN & COLORWAY |
| 3 | ARM STYLE. | 5 | + LUMBAR SUPPORT. | | PER TEXTILE. |
| 3A | + ARMREST STYLE. | 6 | UPHOLSTERY LAYOUT. | 7 | PACKAGING. |
| 3B | + ARM WIDTH ADJUSTMENT. | | | | |

QUOTING IS EASY WITH SPEC IT BUILD & QUOTE

Visit Spec It (<https://viaseating.com/spec-it/>) to build & price your desired model easily. Via Seating’s custom design & quote tool features the ability to select & render an image of your desired chair in 4K photo realism with a click & zoom feature. Download an image of your model in multiple resolutions. View a part break out with pricing listed out per option. View dimensions that update based on the model you select. Download autoCAD & revit, view user guides & videos, download assembly instructions & so much more that all update in realtime to your model selections.

Visit <https://viaseating.com/spec-it/#/linate> or scan the QR code:



Luna

lounge, collaborative, lobby



Key Features

- Breadth of Line: soft seating ottoman
- Upholstery: option to upholster the top and the sides in different textiles
- Bases: a variety of lovely polished, brushed and matte black bases
- Via Seating's comfort foam: a proprietary blend of high-density, injection-molded, closed-cell, cold-cured foam so durable and lasting it is backed by Via Seating's 12 year warranty
- Options available using stocked textiles on Quick Ship

VIA 48-HOUR MANUFACTURING TIME

5 ottomans/48 hours

WARRANTY

6 years

GSA (CONTRACT #: GS-28F-005CA)

Yes, SIN# 33721

AVAILABLE ON SPEC IT?

Yes

AVAILABLE ON CET EXTENSION?

Yes

AVAILABLE ON 2020 & PROJECT MATRIX?

Yes

SUSTAINABILITY CERTS & INITIATIVES



Design by Studio V

Studio V creates modern, sophisticated and original seating solutions that are ergonomic, beautiful and sustainable. This team of engineers, sustainability experts and designers is based in Reno, Nevada. Studio V develops products using a prototyping lab, the latest in 3D modeling software and a materials testing center.

via
SEATING

SEATING SERIES | PUBLIC LIST PRICING
GSA: YES, SIN# 33721. | MANUFACTURED IN U.S.A.

Quoting is easiest with Via Seating's Spec It custom build & quote tool. Get list pricing, chair renders, dimensions, symbols, user guides, a pdf quote & so much more all updatable in real time to your model selections. Check it out using the QR code >>



1. STARTING MODEL.



MODEL #	926
PRICE	\$675
DESCRIPTION	Soft seating round ottoman
QUICK SHIP ¹	5/48: 5 ottomans made in 48 hours.

NOTE 1: QUICK SHIP PROGRAM

All models using in-stock "quick ship" fabrics & in-stock "quick ship" options are able to be produced in a 48-hour manufacturing period on business days during business hours. The number of completed models listed are able to be produced in that 48-hour period. Note, we require 1 business day within business hours to process completed orders received and 1 day to ship out the order. Quick ship does not include delays from mills in supplying fabric, COM/COL/custom textiles, custom configurations or shipment time once the product ships out. As we understand not all products are needed on quick ship, please confirm your need by date on your quote or with your AM/CAS.

For project lead times, especially on products including this symbol  call us at 1-800-433-6614 or email your CAS support person at csnorth@viaseating.com, cssouth@viaseating.com, cswest@viaseating.com or cscanada@viaseating.com.

2. BASE STYLE.

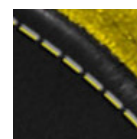
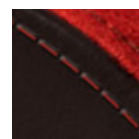
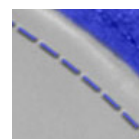
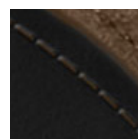
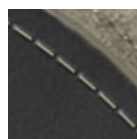
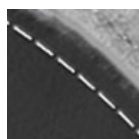
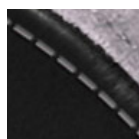
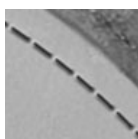


PART #	26POL	26BLK	2DISK
PRICE	+\$0	+\$0	+\$177
DESCRIPTION	Polished 4-leg fixed-height base	Matte black 4-leg fixed-height base	Brushed disk fixed-height base

2A. GASLIFT FUNCTIONALITY.

PART #	SR	SF
PRICE	+\$0	+\$34
DESCRIPTION	Return-to-center gas lift	No swivel Fixed gas lift

3. OPTIONAL EMPHASIZED STITCH THREAD COLOR.³ (SEE PG 3 OF 4)



PART #	CTS-03	CTS-05	CTS-04	CTS-06	CTS-07	CTS-09	CTS-08	CTS-10
PRICE	+\$0	+\$0	+\$0	+\$0	+\$0	+\$0	+\$0	+\$0
DESCRIPTION	Black	Grey	White	Cream	Chocolate	Blue	Red	Yellow
NOTE	Standard thread color without emphasized stitch is a tonal match to the textile(s) selected.							

NOTE 3: Material images are representational. Lighting, paper type, monitor screen settings and other factors can alter the appearance of any material (frame color, mesh color, poly color, etc) sometimes significantly. To best compare a material to the setting it will be used in, please request a free sample of the material at samples.viaseating.com.

4. UPHOLSTERY LAYOUT.



USE WITH	All models.	All models.
PART #	/	U2
PRICE	+\$0	+\$0
DESCRIPTION	Single upholstery.	Two-tone upholstery.
TEXTILES	1 textile.	2 textiles.

CALCULATING COM | COL MATERIAL LENGTH.

MODEL #	WHOLE OTTOMAN	TOP ONLY	SIDES ONLY
926	1 yd 9 sq ft	1 yd 9 sq ft	1 yd 9 sq ft

COM yardage shown in this price book is based on non-directional textiles with a width of 54". Fabrics less than 54" wide or those requiring matching stripes, prints, or matching large pattern designs will require additional material.

COM WIDTH & REPEAT TABLE

FABRIC WIDTH	NON-DIRECTIONAL FABRIC	PATTERNS CONTAINING STRIPES, PLAIDS OR PATTERNS WITH REPEATS			
		2" - 14" REPEAT: ADD FABRIC	15" - 24" REPEAT: ADD FABRIC	25" - 27" REPEAT: ADD FABRIC	28" - 36" REPEAT: ADD FABRIC
54"	0%	10%	15%	20%	25%
50"	10%	20%	25%	30%	35%
48"	15%	25%	30%	35%	45%
45"	40%	50%	55%	60%	65%
36"	50%	60%	65%	70%	75%

See page 18 for COM | COL guidance. We are happy to supply yardage requirement quotes for large quantity chair orders, as material efficiencies may be realized. Please call 1-800-433-6614 or email your CAS support person at csnorth@viaseating.com, cssouth@viaseating.com, cswest@viaseating.com or cscanada@viaseating.com.

4A. TEXTILE(S).⁴

MODEL #	GR A	GR B	GR 1	COM	GR 2	GR 3	COL	GR 4	GR 5	GR 6	GR 7	GR 8
926	+\$0	+\$40	+\$82	+\$82	+\$143	+\$209	+\$209	+\$279	+\$373	+\$478	+\$652	+\$851

DIRECTION: For each textile in your model string, list grade letter or number followed by (mill, pattern & colorway). Note, grading scale goes up from A (lowest priced textile) to B to one (1) through eight (8).

NOTE 4: When multiple textiles are specified, the highest grade will be used for the total textile price calculation.

5. PACKAGING.

PART #	PRICE	DESCRIPTION
FA	+\$0	FULLY ASSEMBLED: Product ships fully assembled in the box.
BW	CALL	BLANKET WRAPPED: Product ships blanket wrapped. Minimum order quantity 150. Call us for pricing 1-800-433-6614.

<div><div></div></div>	<div><div></div></div>	<div><div></div></div>	<div><div></div></div>	<div><div></div></div>	<div><div></div></div>	<div><div></div></div>
1	2	2A	3	4	4A	5

- | | | | |
|----|--------------------------|----|--------------------------|
| 1 | STARTING MODEL. | 4A | TEXTILE(S): GRADE, MILL, |
| 2 | BASE STYLE. | | PATTERN & COLORWAY |
| 2A | + GASLIFT FUNCTIONALITY. | | PER TEXTILE. |
| 3 | + EMPHASIZED STITCH. | 5 | PACKAGING. |
| 4 | UPHOLSTERY LAYOUT. | | |

QUOTING IS EASY WITH SPEC IT BUILD & QUOTE

Visit Spec It (<https://viaseating.com/spec-it/>) to build & price your desired model easily. Via Seating’s custom design & quote tool features the ability to select & render an image of your desired chair in 4K photo realism with a click & zoom feature. Download an image of your model in multiple resolutions. View a part break out with pricing listed out per option. View dimensions that update based on the model you select. Download autoCAD & revit, view user guides & videos, download assembly instructions & so much more that all update in realtime to your model selections.

Visit <https://viaseating.com/spec-it/#/luna-ottoman> or scan the QR code:



Meteor

lounge, collaborative, lobby, executive guest, conference



Key Features

- Breadth of Line: soft seating chairs
- Designer Shape: sleek design, with multi-upholstery options across the seat, interior of the back & exterior of the back
- Control Mechanisms: choices include 360 degree swivel
- Bases: features Edge's signature high-profile 4-leg walnut or oak finish wood base, low-profile 4-leg wood bases and a variety of lovely polished, brushed, matte black and silver bases including 5-star swivel conference base options
- Via Seating's comfort foam: a proprietary blend of high-density, injection-molded, closed-cell, cold-cured foam so durable and lasting it is backed by Via Seating's 12 year warranty
- Options available using stocked textiles on Quick Ship

VIA 48-HOUR MANUFACTURING TIME

2 chairs/48 hours

WARRANTY

6 years

GSA (CONTRACT #: GS-28F-005CA)

Yes, SIN# 33721

AVAILABLE ON SPEC IT?

Yes

AVAILABLE ON CET EXTENSION?

Yes

AVAILABLE ON 2020 & PROJECT MATRIX?

Yes

SUSTAINABILITY CERTS & INITIATIVES



Design by Studio V

Studio V creates modern, sophisticated and original seating solutions that are ergonomic, beautiful and sustainable. This team of engineers, sustainability experts and designers is based in Reno, Nevada. Studio V develops products using a prototyping lab, the latest in 3D modeling software and a materials testing center.

via
SEATING

Meteor

pg 2 of 6

SEATING SERIES | PUBLIC LIST PRICING

GSA: YES, SIN# 33721. | MANUFACTURED IN U.S.A.

Quoting is easiest with Via Seating's Spec It custom build & quote tool. Get list pricing, chair renders, dimensions, symbols, user guides, a pdf quote & so much more all updatable in real time to your model selections. Check it out using the QR code >>



1. STARTING MODEL.



MODEL #	927
PRICE	\$1719
DESCRIPTION	Soft seating chair
QUICK SHIP ¹	2/48: 2 chairs made in 48 hours.

NOTE 1: QUICK SHIP PROGRAM

All models using in-stock "quick ship" fabrics & in-stock "quick ship" options are able to be produced in a 48-hour manufacturing period on business days during business hours. The number of completed models listed are able to be produced in that 48-hour period. Note, we require 1 business day within business hours to process completed orders received and 1 day to ship out the order. Quick ship does not include delays from mills in supplying fabric, COM/COL/custom textiles, custom configurations or shipment time once the product ships out. As we understand not all products are needed on quick ship, please confirm your need by date on your quote or with your AM/CAS.

For project lead times, especially on products including this symbol 📦 call us at 1-800-433-6614 or email your CAS support person at csnorth@viaseating.com, cssouth@viaseating.com, cswest@viaseating.com or cscanada@viaseating.com.

2. OPTIONAL FIXED SEAT.

PART #	/	FXD
PRICE	+\$0	+\$206
DESCRIPTION	Standard clean-out, velcro-attached seat.	Permanet, fixed seat.

3. BASE STYLE.



PART #	33POL	33BLK	21XB	21XS	3DISK
PRICE	+\$0	+\$0	+\$103	+\$159	+\$308
DESCRIPTION	Polished 4-leg fixed-height base	Matte black 4-leg fixed-height base	Matte black wire X base	Silver wire X base	Brushed disk fixed-height base



PART #	5WAL	5OAK
PRICE	+\$231	+\$231
DESCRIPTION	Walnut low-profile 4-leg wood base	Oak low-profile 4-leg wood base

4. MOTION-LOUNGE CONTROL.

USE WITH BASE	33BLK, 33POL, 3DISK	33BLK, 33POL, 3DISK	33BLK, 33POL, 3DISK
PART #	69C	70C	72C
PRICE	+\$0	+\$206	+\$414
DESCRIPTION	Standard 360 degree swivel mechanism	Rock mechanism	Rock & Sway mechanism
PASSES	ANSI/BIFMA X5.1	ANSI/BIFMA X5.1	ANSI/BIFMA X5.1

MAX WEIGHT CAPACITY PER MODEL-BASE.²

Model	69C	70C	72C	21XB	21XS	5WAL	5OAK
927	300 lb	300 lb	300 lb	300 lb	300 lb	300 lb	300 lb

NOTE 2: Exceeding the max weight stated is considered not safe & is a violation of a warranty where one is applicable. For inquiries regarding needs above these max weight capacities, please call 1-800-433-6614 or email your CAS support person at csnorth@viaseating.com, cssouth@viaseating.com, cswest@viaseating.com or cscanada@viaseating.com.

4A. GASLIFT FUNCTIONALITY.

USE WITH BASE	33BLK, 33POL, 3DISK	33BLK, 33POL, 3DISK	33BLK, 33POL, 3DISK
PART #	SO	SR	SF
PRICE	+\$0	+\$34	+\$34
DESCRIPTION	Non return-to-center gas lift	Return-to-center gas lift	No swivel Fixed gas lift

4B. OPTIONAL FELT GLIDES.

USE WITH	21XB, 21XS.
PART #	FELT
PRICE	+\$26
DESCRIPTION	Felt glides

5. OPTIONAL EMPHASIZED STITCH THREAD COLOR.³

PART #	CTS-03	CTS-05	CTS-04	CTS-06	CTS-07	CTS-09	CTS-08	CTS-10
PRICE	+\$0	+\$0	+\$0	+\$0	+\$0	+\$0	+\$0	+\$0
DESCRIPTION	Black	Grey	White	Cream	Chocolate	Blue	Red	Yellow
NOTE	Standard thread color without emphasized stitch is a tonal match to the textile(s) selected.							

NOTE 3: Material images are representational. Lighting, paper type, monitor screen settings and other factors can alter the appearance of any material (frame color, mesh color, poly color, etc) sometimes significantly. To best compare a material to the setting it will be used in, please request a free sample of the material at samples.viaseating.com.

6. UPHOLSTERY LAYOUT.



USE WITH	All models.	All models.
PART #	/	U2
PRICE	+\$0	+\$0
DESCRIPTION	Single upholstery.	Two-tone upholstery.
TEXTILES	1 textile.	2 textiles.

CALCULATING COM | COL MATERIAL LENGTH.

MODEL #	BACK & SEAT	BACK ONLY	SEAT ONLY
927	3 yd 42 sq ft	2 yd 35 sq ft	1 yd 7 sq ft

COM yardage shown in this price book is based on non-directional textiles with a width of 54". Fabrics less than 54" wide or those requiring matching stripes, prints, or matching large pattern designs will require additional material.

COM WIDTH & REPEAT TABLE

FABRIC WIDTH	NON-DIRECTIONAL FABRIC	PATTERNS CONTAINING STRIPES, PLAIDS OR PATTERNS WITH REPEATS			
		2" - 14" REPEAT: ADD FABRIC	15" - 24" REPEAT: ADD FABRIC	25" - 27" REPEAT: ADD FABRIC	28" - 36" REPEAT: ADD FABRIC
54"	0%	10%	15%	20%	25%
50"	10%	20%	25%	30%	35%
48"	15%	25%	30%	35%	45%
45"	40%	50%	55%	60%	65%
36"	50%	60%	65%	70%	75%

See page 18 for COM | COL guidance. We are happy to supply yardage requirement quotes for large quantity chair orders, as material efficiencies may be realized. Please call 1-800-433-6614 or email your CAS support person at csnorth@viaseating.com, cssouth@viaseating.com, cswest@viaseating.com or cscanada@viaseating.com.

6A. TEXTILE(S).⁴

MODEL #	GR A	GR B	GR 1	COM	GR 2	GR 3	COL	GR 4	GR 5	GR 6	GR 7	GR 8
927	+\$0	+\$103	+\$214	+\$214	+\$368	+\$533	+\$533	+\$713	+\$956	+\$1226	+\$1668	+\$2174

DIRECTION: For each textile in your model string, list grade letter or number followed by (mill, pattern & colorway). Note, grading scale goes up from A (lowest priced textile) to B to one (1) through eight (8).

NOTE 4: When multiple textiles are specified, the highest grade will be used for the total textile price calculation.

7. PACKAGING.

PART #	PRICE	DESCRIPTION
FA	+\$0	FULLY ASSEMBLED: Product ships fully assembled in the box.
BW	CALL	BLANKET WRAPPED: Product ships blanket wrapped. Minimum order quantity 150. Call us for pricing 1-800-433-6614.

BUILD YOUR MODEL STRING

 1 2 3 4 4A 4B 5 6 6A 7

- | | | | | | |
|---|------------------------|----|--------------------------|----|--------------------------|
| 1 | STARTING MODEL. | 4A | + GASLIFT FUNCTIONALITY. | 6A | TEXTILE(S): GRADE, MILL, |
| 2 | + FIXED SEAT. | 4B | + FELT GLIDES. | | PATTERN & COLORWAY |
| 3 | BASE STYLE. | 5 | + EMPHASIZED STITCH. | | PER TEXTILE. |
| 4 | MOTION-LOUNGE CONTROL. | 6 | UPHOLSTERY LAYOUT. | 7 | PACKAGING. |

QUOTING IS EASY WITH SPEC IT BUILD & QUOTE

Visit Spec It (<https://viaseating.com/spec-it/>) to build & price your desired model easily. Via Seating's custom design & quote tool features the ability to select & render an image of your desired chair in 4K photo realism with a click & zoom feature. Download an image of your model in multiple resolutions. View a part break out with pricing listed out per option. View dimensions that update based on the model you select. Download autoCAD & revit, view user guides & videos, download assembly instructions & so much more that all update in realtime to your model selections.

Visit <https://viaseating.com/spec-it/#/meteor> or scan the QR code:



