



IM#: 18-0109784

Vertical. Intelligent. Architecture.

V.I.A. not only defines space, but redefines the role vertical real estate plays in today's workplace. V.I.A. augments human interaction by providing true acoustical privacy and hosting technology. It provides a sense of permanence with the speed and design flexibility of a relocatable wall, allowing the creation of a range of applications.

AUGMENT COLLABORATION

V.I.A. elegantly hosts technology to create portals between physical and virtual worlds. V.I.A. can provide true acoustical privacy for collaborative teams, as well as for workers in adjacent work spaces.

AUGMENT BRAND

V.I.A. easily becomes a canvas to express brand and culture, while providing informal space to people to connect. Redesigned, one-piece tracks create a cleaner aesthetic that allows large expanses of glass to run uninterrupted by frames. With V.I.A., the exterior of the wall can work as hard as the interior, maximizing the value of vertical real estate, while creating places for employees to meet, socialize, inform and be informed.

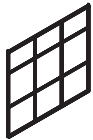
AUGMENT PRIVACY

Dynamic, collaborative team spaces can be adjacent to focused workspaces without creating noise disturbances. V.I.A. is engineered with a unique acoustical intelligence: all frames and skins are manufactured with full acoustical seals.

DESIGN FREEDOM

Spaces can be built on standard modules to maximize reconfiguration, or to be unique, expressive and off a grid. V.I.A. is designed parametrically, in increments of $\frac{1}{32}$ ", eliminating dimensional specials. With V.I.A. it's easy to make small changes or large changes, blending a sense of permanence with flexibility for evolving business needs and future technologies. V.I.A. cornice solutions can be used in free-standing applications to minimize the number of touch-points with the building architecture.

PRODUCT DETAILS



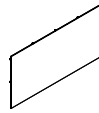
Structural Framing

From 6'8"-12'. Wall can be applied in both ceiling supported and free-standing applications.



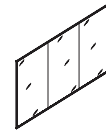
Glass Frames

Options include $\frac{1}{4}$ " and $\frac{3}{8}$ " tempered or laminated glass, single- or double-glazed applications. Maximum size when applied in horizontal orientation is 5'H x 10'W. Maximum size when applied in vertical orientation is 10'H x 5'W and 12'H when 4'W.



Solid Skins

Options include painted steel, fabric wrapped steel, laminate, veneer, ceramic steel. Maximum size when applied in horizontal orientation is 4'H x 10'W. Maximum size when applied in vertical orientation is 10'H x 4'W and 12'H when 4'W.



Butt Glazing

Thin, $\frac{1}{2}$ " butt-glazed glass and low profile trim presents minimal framing profiles and allows T, L and variable angle corners without the need for vertical in-line posts.



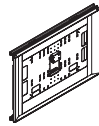
Swing Doors

Full height and transom height reversible butt-hinge door, polished edge glass or veneer door leaf flush mounted to corridor. Available widths: 28"-44 $\frac{1}{2}$ ". Available heights: 83"-123".



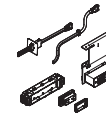
Slider Doors

Full height and transom height surface mounted slider doors – polished edge glass. Available widths: 38"-48". Available heights: 82"-122" (Full height). Solid walls can also support surface mounted monitors. Other heights and widths available with additional considerations.



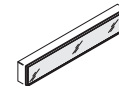
Monitor Shrouds

Embedded monitor shrouds accommodate standard monitors and provide proper ventilation and access. Optional camera shelf supports HDVC.



Power/Data

Modular and hardwire power options available.



LED Lighting

Embedded LED lighting fixtures supplement existing lighting to enhance video conferencing. Height: 7". Available widths: up to 10'.

Steelcase®

Call 800.333.9939 or visit [Steelcase.com](https://www.steelcase.com)



facebook.com/Steelcase



twitter.com/Steelcase



youtube.com/SteelcaseTV