



Woodlook

Collection

WOODLOOK

SANDLERSEATING

SANDLERSEATING

SANDLER SEATING USA

1201 Peachtree St NE - Suite 1625

Atlanta, Georgia 30361

T: +1 404 982 9000

F: +1 404 321 7882

SANDLER SEATING UK

1A Fountayne Road

London N15 4QL

T: +44 (0) 203 284 8000

F: +44 (0) 203 234 2999

www.sandlerseating.com

sales@sandlerseating.com





Page 6	What is Woodlook
Page 8	Woodlook's finishes
Page 10	At a Glance
Page 14	W1.2 / W1.2HB / W2.2 / W3.2
Page 20	W2.2C / W2.2HB / W2.2HBC
Page 24	W1.3 / W2.3 / W2.3C / W3.3
Page 28	W1.4 / W3.4
Page 36	W1.5 / W2.5 / W2.5C
Page 40	W1.7 / W2.7 / W3.7
Page 42	W1.8 / W2.8 / W2.8C
Page 48	W1.9 / W1.9WOS/ W2.9 / 3.9
Page 56	W2.6 / W2.6C
Page 60	W1.13 / W3.13
Page 62	Caster Section
Page 68	Selected Installations
Page 70	Environmental Statement

INDEX





THE LOOK OF WOOD, THE STRENGTH OF ALUMINUM

Woodlook is a range of side chairs, armchairs and barstools manufactured from aluminum, with an authentic wood appearance. Baked on wood grain film makes the frame virtually indistinguishable from solid wood.

We challenge you to tell the difference!





SCRATCH RESISTANT Woodlook is the stronger, lighter alternative to conventional wooden furniture, where style and longevity are essential. The frame is scratch and water resistant.



Lbs.

STRENGTH TESTED Woodlook models have passed ANSI/BIFMA strength tests whilst the frame finish exceeds 1000 abrasions.



ANTIMICROBIAL Over 20 common cleaners and disinfectants have been tested on Woodlook seating, resulting in no discoloration or damage.



15 YEAR WARRANTY Woodlook frames can endure the toughest of environments and are guaranteed for 15 years.



ENVIRONMENTALLY FRIENDLY Woodlook is both cost effective and environmentally friendly; aluminum recycling saves approximately 95% of the energy required for primary production. The metal can be recycled continuously.



LIGHTWEIGHT Aluminum combines high resistance with lightness, ideal when stacking multiple chairs.





Five wood like finishes

DIMENSIONS KEY



OVERALL HEIGHT



SEAT HEIGHT



OVERALL DEPTH



OVERALL WIDTH



ARM HEIGHT






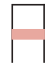

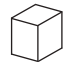
VOLUME







DIMENSIONS

						Lbs.	
1.2	33.7"	18.5"	20.3"	19.3"	-	14.88 lbs	12.71 ft ³ / 3 pcs
1.2 HB	36.6"	18.5"	21.7"	19.3"	-	14.88 lbs	12.71 ft ³ / 3 pcs
2.2	33.7"	18.5"	20.2"	23.4"	26.8"	16.2 lbs	16.95 ft ³ / 3 pcs
3.2	42.5"	31.5"	19.8"	18.5"	-	16.42 lbs	8.93 ft ³ / 1 pcs

Woodlook 1.2 / 1.2HB / 2.2 / 3.2






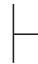

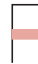

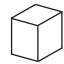








DIMENSIONS

						Lbs.	
2.2C	33.7"	18.5"	20.2"	23.4"	26.8"	16.2 lbs	16.95 ft ³ / 3 pcs
2.2HB	36.6"	18.5"	20.2"	23.4"	26.8"	16.2 lbs	16.95 ft ³ / 3 pcs
2.2HBC	36.6"	18.5"	20.2"	23.4"	26.8"	16.2 lbs	16.95 ft ³ / 3 pcs

Woodlook 2.2C / 2.2HB / 2.2HBC









WOODLOOK 1.3



WOODLOOK 2.3



WOODLOOK 2.3C



WOODLOOK 3.3



Beech



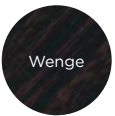
Teak



Light Walnut



Walnut



Wenge

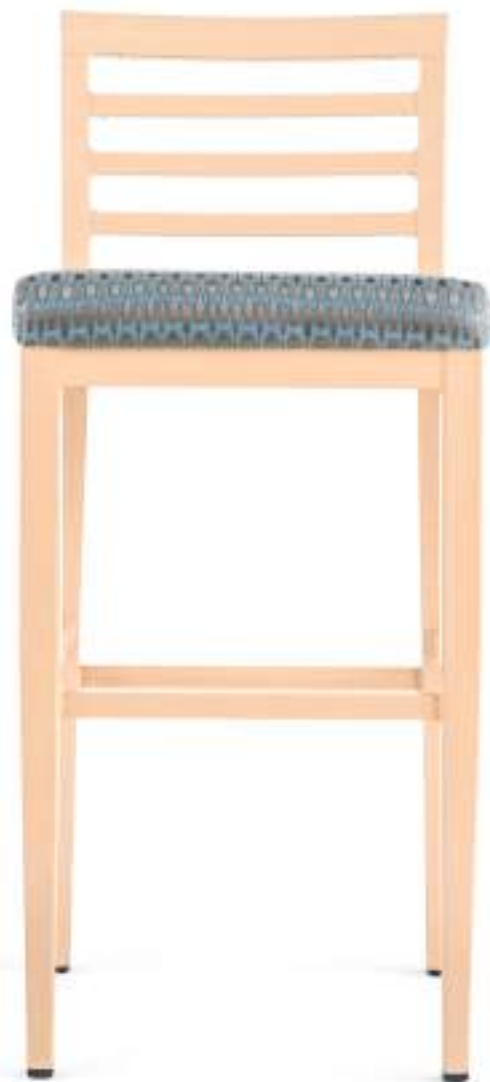
DIMENSIONS

						Lbs.	
1.3	33.7"	18.5"	20.3"	19.3"	-	13.23 lbs	12.71 ft ³ / 3 pcs
2.3	33.7"	18.5"	20.1"	23.4"	26.8"	15.43 lbs	16.95 ft ³ / 3 pcs
2.3C	33.7"	18.5"	20.1"	23.4"	26.8"	15.43 lbs	16.95 ft ³ / 3 pcs
3.3	42.5"	31.5"	19.8"	18.5"	-	16.2 lbs	8.3 ft ³ / 1 pcs

Woodlook 1.3 / 2.3 / 2.3C / 3.3









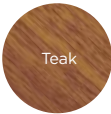
WOODLOOK 1.4



WOODLOOK 3.4



Beech



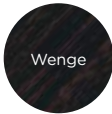
Teak



Light Walnut




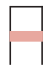




Walnut



Wenge

DIMENSIONS

						Lbs.	
1.4	37"	18.9"	22.8"	18.1"	-	24.25 lbs	8.48 ft ³ / 2 pcs
3.4	41.7"	31.5"	22"	17.7"	-	23.59 lbs	9.18 ft ³ / 1 pcs

Woodlook 1.4 / 3.4











Ballast Point Brewing Company, Long Beach CA







WOODLOOK 1.5



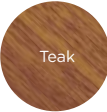
WOODLOOK 2.5



WOODLOOK 2.5C



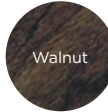
Beech



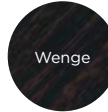
Teak



Light Walnut









Walnut



Wenge

DIMENSIONS

						Lbs.	
1.5	33.7"	18.5"	20.3"	19.3"	-	14.88 lbs	12.71 ft ³ / 3 pcs
2.5	33.7"	18.5"	20.2"	23.4"	26.8"	16.2 lbs	16.95 ft ³ / 3 pcs
2.5C	33.7"	18.5"	20.2"	23.4"	26.8"	16.2 lbs	16.95 ft ³ / 3 pcs

Woodlook 1.5 / 2.5 / 2.5C




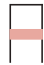










DIMENSIONS







						Lbs.	
1.7	32.7"	18.9"	18.9"	18.5"	-	13.23 lbs	11.97 ft ³ / 2 pcs
2.7	32.7"	18.9"	22.8"	23.2"	25.2"	15.43 lbs	14.13 ft ³ / 2 pcs
3.7	44.1"	30.7"	18.5"	19.3"	-	28.66 lbs	26.49 ft ³ / 1 pcs

Woodlook 1.7 / 2.7 / 3.7





DIMENSIONS

						Lbs.	
1.8	37.6"	18.5"	23.2"	20.9"	-	15.43 lbs	17.66 ft ³ / 3 pcs
2.8	37"	18.1"	22"	24"	26"	17.64 lbs	19.42 ft ³ / 3 pcs
2.8C	37"	18.1"	22"	24"	26"	17.64 lbs	19.42 ft ³ / 3 pcs

Woodlook 1.8 / 2.8 / 2.8C







Birmingham Country Club, Michigan





Birmingham Country Club, Michigan



WOODLOOK 1.9




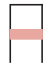


WOODLOOK 1.9WOS

WOODLOOK 2.9

WOODLOOK 3.9



DIMENSIONS

						Lbs.	
1.9	32.7"	18.9"	22.8"	20.1"	-	15.65 lbs	26.49 ft ³ / 6 pcs
1.9WOS	33.5"	18.9"	21.7"	20.1"	-	14.99 lbs	26.49 ft ³ / 6 pcs
2.9	33.5"	18.5"	22.8"	23.6"	25.6"	16.53 lbs	34.61 ft ³ / 6 pcs
3.9	42.5"	31.1"	21.5"	18.9"	-	17.64 lbs	13.07 ft ³ / 2 pcs

Woodlook 1.9 / 1.9WOS / 2.9 / 3.9







Ballast Point Brewing Company, Long Beach CA











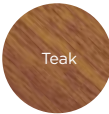
WOODLOOK 2.6



WOODLOOK 2.6C



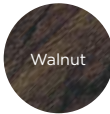
Beech



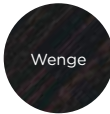
Teak



Light
Walnut




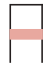




Walnut



Wenge

DIMENSIONS

						Lbs.	
2.6	40.2"	18.5"	25.6"	23.2"	25.2"	17.64 lbs	16.95 ft ³ / 3 pcs
2.6C	40.2"	18.5"	25.6"	23.2"	25.2"	17.64 lbs	16.95 ft ³ / 3 pcs

Woodlook 2.6 / 2.6C









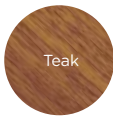
WOODLOOK 1.13



WOODLOOK 3.13



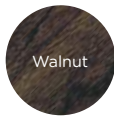
Beech



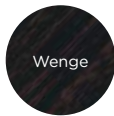
Teak



Light
Walnut




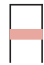




Walnut



Wenge

DIMENSIONS

						Lbs.	
1.13	32.8"	16.7"	23"	21.3"	-	17.64 lbs	16.95 ft ³ / 3 pcs
3.13	40.4"	28.1"	22.2"	21.3"	-	17.64 lbs	16.95 ft ³ / 3 pcs

Woodlook 1.13 / 3.13


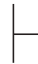

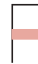






Caster Section



DIMENSIONS

						Lbs.	
2.2HBC	36.6"	18.5"	20.2"	23.4"	26.8"	16.2 lbs	16.95 ft ³ / 3 pcs
2.3C	33.7"	18.5"	20.1"	23.4"	26.8"	15.43 lbs	16.95 ft ³ / 3 pcs
2.5C	33.7"	18.5"	20.2"	23.4"	26.8"	16.2 lbs	16.95 ft ³ / 3 pcs
2.6C	40.2"	18.5"	25.6"	23.2"	25.2"	17.64 lbs	16.95 ft ³ / 3 pcs
2.8C	37"	18.1"	22"	24"	26"	17.64 lbs	19.42 ft ³ / 3 pcs

Woodlook 2.2 HBC / 2.3C / 2.5C / 2.6C / 2.8C







SELECTED INSTALLATIONS





A SELECTION OF WOODLOOK CUSTOMERS

University of Wisconsin WI

Broward Co. Center for Performing Arts FL

Eden Roc / Nobu Hotel South Beach, FL

Ballast Point Brewing Company, Long Beach CA

University of Arkansas Razorbacks Stadium AR

Fairbanks Ranch Country Club, San Diego CA

University of Southern California CA

Worldmark by Wyndham Resort, Las Vegas NV

Station Casinos, Las Vegas NV

Wind Creek Casino, Wetumpka AL

The Rainbow Room, New York NY

Motor City Casino, Detroit MI

Park Hyatt, New York NY

Andaz by Hyatt, New York NY

Manchester Grand Hyatt, San Diego CA

NFL Nashville Titans Arena, Nashville TN

Detroit Redwings Arena, Detroit MI

ENVIRONMENTAL STATEMENT

Sandler Seating is committed to good environmental practice and operating in a sustainable manner.

- We wholly support and comply with or exceed the requirements of current environmental legislation and codes of practice.
- We seek to minimise our waste and then reuse or recycle as much of it as possible.
- We minimise energy and water usage in our buildings, vehicles and processes in order to conserve supplies, and minimise our consumption of natural resources, especially where they are non-renewable.
- We operate and maintain company vehicles (where appropriate) with due regard to environmental issues as far as reasonably practical and encourage the use of alternative means of transport and car sharing as appropriate.
- We hope to continuously improve in respect of air, water, noise and light pollution from our premises and reduce any impacts from our operations on the environment and local community.
- We purchase products and services that are the least damaging to the environment and encourage others to do the same where possible.
- We assess the environmental impact of any new processes or products we intend to introduce in advance.
- All our aluminum and steel frames can be melted down and recycled.
- Both our rubber glides and standard fabric ranges are also recyclable.

We aim to reduce our environmental impact and improve our environmental performance as an integral part of our business strategy. It is our priority to encourage our customers, suppliers and all business associates to do the same.

SANDLER SEATING USA

1201 Peachtree St NE - Suite 1625

Atlanta, Georgia 30361

T: +1 404 982 9000

F: +1 404 321 7882

SANDLER SEATING UK

1A Fountayne Road

London N15 4QL

T: +44 (0) 203 284 8000

F: +44 (0) 203 234 2999

sandlerseating.com

sales@sandlerseating.com

SANDLERSEATING

sandlerseating.com/woodlook

CREDITS

GRAPHIC DESIGN Valentina Monaco

CREATIVE DIRECTION Michele Rasore



SANDLERSEATING

SANDLER SEATING USA
1201 Peachtree St NE - Suite 1625
Atlanta, Georgia 30361
T: +1 404 982 9000
F: +1 404 321 7882

SANDLER SEATING UK
1A Fountayne Road
London N15 4QL
T: +44 (0) 203 284 8000
F: +44 (0) 203 234 2999

www.sandlerseating.com
sales@sandlerseating.com