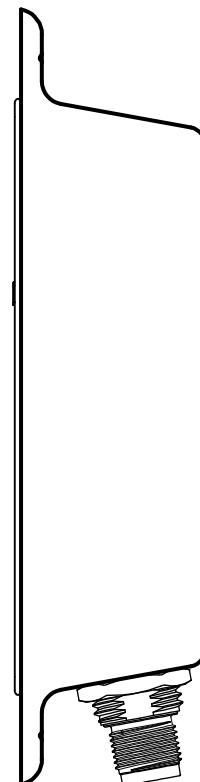
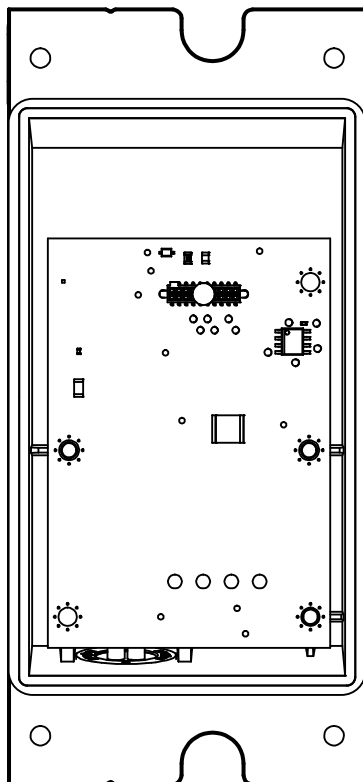


## Field-replaceable surge protection for XP20 sensor

Surge protection for your sensors is an important part of your Expanse installation. The XP20 Surge card comes installed in every XP20 sensor. Should the card be blown out by a surge, simply use a screwdriver to swap it quickly and easily in the field with one of these replacement cards.



- Designed for use with the XP20, in an installation with Arc cabinet interface devices
- Protects the sensor against surges on the sensor cable
- In case of surge, card can be easily replaced, negating the need to replace the whole XP20 sensor or send the sensor in for repairs
- Quick and easy installation in the field requires only a slotted screwdriver
- Includes M12 T-coded male cable connector for terminating sensor cable
- Allows you to test functionality in the field easily using a multimeter
- Multi-stage surge protection for data and DC power
- FCC-compliant
- Complies with NEMA TS2-2003 environmental testing
- Surge immunity complies with IEC 61000-4-5 level 4 standard
- Conformal coated



## XP20 Surge technical specifications

### Physical properties

- Dimensions: 5.5 in. × 2.5 in. × 1.4 in. (14 cm × 6.4 cm × 3.5 cm)
- Weight: 0.33 lbs (0.15 kg)

### Operating conditions

- Ambient operating temperature: -29°F to 165°F (-34°C to 74°C)
- Humidity: up to 95% RH

### Connections

- M12 T-coded male cable connector

### Surge protection

- DC power
  - Clamping voltage: 60 VDC
- Data
  - Clamping voltage: 5 VDC
- Surge immunity sensor ports: IEC/EN 61000-4-5 level 4

### Testing

- NEMA 250 type 4X-compliant (when properly assembled) for:
  - External icing (clause 5.6)
  - Hose down (clause 5.7)
  - Corrosion protection (clause 5.10)
  - Gasket (clause 5.14)
- Complies with the applicable standards stated in the NEMA TS2-2003 standard.
- FCC-compliant
- Passes manufacturer's test before shipping

### Support

- Extended support options available; contact a Wavetronix representative for more information
- Comprehensive user guide

### Warranty

- Five-year warranty against material and workmanship defect

## Ordering information

XP20 Surge  
**102-0482**

### Contact us

801.734.7200  
sales@wavetronix.com  
www.wavetronix.com