



BOOTS CATALOG



ATHLETIC GEAR FOR FIREFIGHTERS.™

GLOBE[®]TURNOUTGEAR.COM

I AM FIRST-STRING.

I AM A BACKUP.

I AM A PLAYER AND A COACH.

I WILL DO ANYTHING FOR MY TEAM.

I AM ALL IN.

I AM AN ATHLETE



CONTENTS

HISTORY OF INNOVATION 2

BOOTS

 SUPRALITE® 6

 SUPREME™ 8

 SHADOW™ 10

 ONYX® 12

 PROXIMITY 14

 CBRN 16

 TECHNICAL 10" 18

 STRUCTURAL 12" 18

WHEN THE BELL SOUNDS, I AM READY.

ATHLETE



OVER 125 YEARS OF INNOVATION

Globe invented turnout gear over 125 years ago. Today we still deliver the most advanced, best-fitting, and longest-lasting protection by listening to our customers, creating breakthrough designs, and applying the engineering skills of the nation's most trusted manufacturer.

Our fourth-generation family owners, our employees, and our dealers all share a passion for building “Athletic Gear for Firefighters” in their choice of styles, materials, and options. And no matter what challenges tomorrow’s firefighters face, they can be sure that Globe will continue to be there to protect them.

1887

Globe Manufacturing Company is founded in Lynn, MA. Courtland F.H. Freese buys the company and moves it to Pittsfield, NH, which remains its headquarters to this day.

1918

Globe receives a patent for a waterproof coat using an outer shell, a waterproof barrier, and a thermal lining—the same system still used today by all manufacturers of turnout gear.

1953

Globe is the first to use 3M Scotchlite™ reflective trim to add visibility to its turnout gear.

1966

Globe introduces DuPont NOMEX® inherently flame-resistant fabric.

1975

Globe is a charter member of the National Fire Protection Association, creating the first NFPA 1971 Standard for Protective Clothing for Structural Fire Fighting. Globe becomes the first to comply with this new standard for every turnout sold.

1985

Globe introduces two state-of-the-art performance fabrics: PBI® for outer shells and waterproof, breathable Gore-Tex® fabric for moisture barriers.

1991

Globe brings ergonomic design to turnout gear by launching the revolutionary GX-7™, which rapidly becomes the most popular turnout gear in the fire service.

1993

The fourth generation of the founding Freese family takes over the ownership and management of Globe. Gef (left), Rob (middle), and Don (right).

1994

Globe is the first manufacturer of turnouts to achieve ISO 9001 Certification.

1995

Globe acquires Cairns Protective Clothing.



2000

Recognizing that the rescue component of firefighters' jobs continues to grow, Globe introduces Globe LifeLine—the right gear for the job. Globe implements Lean Manufacturing, dramatically improving efficiency and reducing delivery times.

2003

Globe launches G-XTREME®—the world's most advanced turnout gear—designed to move the way the human body moves without restriction.

2005

REACTION® joins the Globe Cairns family, with its patented collar that attaches the liner to the outside of the jacket and adds length and fullness where the body bends.

2006

Globe introduces “Athletic Footwear for Firefighters,” with its remarkably flexible, cushioned, and contoured construction, to choruses of “Wow.”

2007

Globe launches IH™ Pants—integrating a Class 2 internal seat harness with floating, load-equalizing leg loops into turnout gear.

2008

Globe introduces G-XCEL® and RSX™ turnout gear styles—serious performance and great value.

2009

Another new Globe turnout style—CLASSIX®. Value-priced turnout gear with a nod to the traditional.

2012

G-XTREME® introduces a whole new dimension in fit—SHAPE. Now your gear can really fit your body—without extra bulk and without restriction—so that you can perform your job better.

2013

Globe introduces “Athletic Gear for Firefighters.” Because fighting fires is demanding, physical work requiring maximum athletic performance.

2014

Globe introduces CLASSIX® METRO™, designed expressly for Metro departments, with a portion of proceeds to benefit the Terry Farrell Firefighters Fund, and the CLASSIX® SE, with a discount to National Volunteer Fire Council members.

2015

Globe introduces the evolution of Athletic Gear for Firefighters. The new G-XTREME® 3.0 is completely retailored from collar to cuff to provide even less restriction.



GLOBE BOOTS: ATHLETIC FOOTWEAR FOR FIREFIGHTERS

With a unique cushioned and contoured sole and athletic footwear construction, Globe boots are flexible like your feet, grip like no other, and feel broken in right out of the box. We even changed out all the heavy and conductive steel components to lighter, stronger, and insulating advanced composites. And they fit so securely, you can even run in them.

All Globe boots share the same foundation but have uppers designed to meet your specific needs and the differing requirements of Structural, Proximity, Technical, and CBRN NFPA Standards. Just put your feet in a pair, and you'll say, "Wow!"



GLOBE IS THE OFFICIAL BOOT OF THE
FIREFIGHTER COMBAT CHALLENGE.



Built with CROSSTECH® footwear fabric
for performance unmatched by any
other waterproof, breathable barrier.

SUPRALITE® 14" PULL ON



SUPRALITE® is even lighter and more flexible by design. The all-new and more aggressive PREDATOR™ outsole keeps the superior grip of our original, while the uppers feature the world's first use of DRAGONHIDE® —a Globe exclusive that is so tough that we use it to reinforce turnout gear. Together with the famous Globe fit, this comes the closest yet to feeling like your favorite sneakers, while providing the protection, support, and slip resistance you depend on.

EXTENDED SIZE RANGE

Men's: 5–16 (full and half sizes), 17–18 (full sizes only) in Narrow, Medium, Wide, and X-Wide widths. Wide calf model available in all sizes.

Women's: 5–12 (full and half sizes) in Narrow, Medium, Wide, and X-Wide widths. Wide calf model available in all sizes.

SUPRALITE® 14" PULL ON

DRAGONHIDE® FABRIC
Fabric panels in shaft and flex joints are made from DRAGONHIDE®—a highly abrasion-, cut-, flame-, and water-resistant fabric so tough that it is used to reinforce turnout gear.

CROSSTECH® FOOTWEAR FABRIC
A full-height bootie liner made from a package of Omaha lining fabric, 300g insulation, and CROSSTECH® moisture barrier provides protection unmatched by any other waterproof, breathable barrier.

FLAME-RESISTANT, WATER-RESISTANT LEATHER
Pebble grain leather with tumbled leather collar.

3M SCOTCHLITE™ REFLECTIVE MATERIAL
Flame-resistant fluorescent and reflective piping.

3M Scotchlite™ Reflective Material

HEELPORT™ INTERNAL FIT SYSTEM
Holds your heel securely so it won't slip while cushioning your ankle.

COMPOSITE HEEL COUNTER
Individually molded to fit each size perfectly.

COMPOSITE SHANK
Lighter than steel, doesn't transmit heat or cold, springs back to shape better.

COMPOSITE PUNCTURE PROTECTION
Far more flexible than a steel plate and doesn't transmit heat or cold. Exceeds NFPA standards.

VIBRAM® CONTOURED CUP OUTSOLE
Molded outsole wraps onto the leather upper for athletic shoe performance. Flame-, abrasion-, oil-, acid-, and slip-resistant compound engineered for high traction and durability, even during prolonged exposure to extremes of heat and cold.

SLIP-RESISTANT TREAD
Siping—thin slits cut into flat areas across the sole—opens up when flexed to provide additional traction on water and ice. Self-cleaning lugs and omnidirectional tread pattern designed for superior performance in all terrains and when working on ladders.

PULL STRAPS
Flexible NOMEX® webbing pull straps reinforced with leather slide easily under turnout pants and are kind to your legs.

KEVLAR® BLEND PROTECTIVE SHIELD
Protects the CROSSTECH® moisture barrier, provides cut resistance, and adds thermal protection.

DuPont™ Kevlar®

3D MOLDED AND PADDED SHIN GUARD
Provides extra protection when you are working on a ladder.

VIBRAM® TOE BUMPER
Made from the same rugged compound as the outsole for abrasion resistance when crawling.

COMPOSITE SAFETY TOE CAP
Lighter than steel, doesn't transmit heat or cold, and exceeds NFPA standards for safety.

DUAL-DENSITY ENHANCED 3D MOLDED FOOTBED SYSTEM
Removable dual-density inserts are contoured to cradle and cushion the bottom of the foot and to provide arch support. Urethane foam bottom layer for durable cushioning with PORON® foam top layer to mold to the foot and keep the feet cool. Moisture-wicking and anti-microbial fabric top layer. An additional EVA insert to use in conjunction with the footbed provides for a snugger fit as needed.

3D COMPOSITE LASTING BOARD
Boot uppers are lasted to a molded and contoured lasting board with built-in flex zone in the forefoot and a torsionally stable heel. Works together with the 3D molded footbed to conform to the shape of your foot.

ATHLETIC FOOTWEAR CONSTRUCTION
Two-part cross-linking adhesive bonds outsoles to the upper. Without stiff welts and ribbed mid-soles, this attachment process is far more flexible.

FACTORY REFURBISHING AVAILABLE
Call customer service for details: 1-800-232-8323

SEI Certified to NFPA 1971 (Structural Fire Fighting) and NFPA 1992 (Liquid Splash).

MADE IN THE USA

SUPREME™ 14" PULL ON

Step into a pair of SUPREME™ boots, and you will know instantly why these boots have taken the market by storm. The combination of the cushioned and contoured sole, the flexible athletic footwear construction, and the internal fit system makes this boot fit like a pair of sneakers. And the specially designed and formulated outsole gives you the best grip in the business in wet, dry, and ice.



EXTENDED SIZE RANGE

Men's: 5–16 (full and half sizes) and 17–18 (full sizes only) in Narrow, Medium, Wide, and X-Wide widths. Wide calf model available in all sizes.

Women's: 5–12 (full and half sizes) in Narrow, Medium, Wide, and X-Wide widths. Wide calf model available in all sizes.



Certified to NFPA 1971 (Structural Fire Fighting) and NFPA 1992 (Liquid Splash). Berry compliant version available. CSA certified version available.

MADE IN THE USA

FLAME-RESISTANT, WATER-RESISTANT HEAVY-DUTY LEATHER

Specially softened tumbled leather in high-flex areas to move with you.

CROSSTECH® FOOTWEAR FABRIC

A full-height bootie liner made from a package of Omaha lining fabric, 300g insulation, and CROSSTECH® moisture barrier provides protection unmatched by any other waterproof, breathable barrier.



3M SCOTCHLITE™ REFLECTIVE MATERIAL

Flame-resistant fluorescent and reflective material for added visibility.



HEELPORT™ INTERNAL FIT SYSTEM

Holds your heel securely so it won't slip while cushioning your ankle.

COMPOSITE HEEL COUNTER

Individually molded to fit each size perfectly.

COMPOSITE SHANK

Lighter than steel, doesn't transmit heat or cold, springs back to shape better.

COMPOSITE PUNCTURE PROTECTION

Far more flexible than a steel plate and doesn't transmit heat or cold. Exceeds NFPA standards.

VIBRAM® CONTOURED CUP OUTSOLE

Molded outsole wraps onto the leather upper for athletic shoe performance. Flame-, abrasion-, oil-, acid-, and slip-resistant compound engineered for high traction and durability, even during prolonged exposure to extremes of heat and cold.



SLIP-RESISTANT TREAD

Siping—thin slits cut into flat areas across the sole—opens up when flexed to provide additional traction on water and ice. Self-cleaning lugs and omnidirectional tread pattern designed for superior performance in all terrains and when working on ladders.

FACTORY REFURBISHING AVAILABLE

Call customer service for details:
1-800-232-8323

PULL STRAPS

Flexible NOMEX® webbing pull straps reinforced with leather slide easily under turnout pants and are kind to your legs.

KEVLAR® BLEND PROTECTIVE SHIELD

Protects the CROSSTECH® moisture barrier, provides cut resistance, and adds thermal protection.

DuPont™
Kevlar®

3D MOLDED AND PADDED SHIN GUARD

Provides extra protection when you are working on a ladder.

COMPOSITE SAFETY TOE CAP

Lighter than steel, doesn't transmit heat or cold, and exceeds NFPA standards for safety.

VIBRAM® TOE BUMPER

Made from the same rugged compound as the outsole for abrasion resistance when crawling.

3D MOLDED REMOVABLE FOOTBED

Contoured to cradle and cushion the bottom of your foot and to provide arch support. Moisture-wicking and anti-microbial fabric top layer.

CUSTOM FIT SYSTEM

A second, thicker removable footbed is provided for a snugger fit or when wearing lighter socks.

3D COMPOSITE LASTING BOARD

Lasts to boot uppers with a built-in flex zone in the forefoot and a torsionally stable heel. Works together with the footbed to conform to your foot's shape.

ATHLETIC FOOTWEAR CONSTRUCTION


Two-part cross-linking adhesive bonds outsoles to the upper. Without stiff welts and ribbed mid-soles, this attachment process is far more flexible.

SHADOW™ 14" PULL ON

SHADOW™ shares the remarkably flexible platform, cushioned and contoured sole, and internal fit system that make Globe boots fit better, grip better, and feel broken in right out of the box. The all-black SHADOW™ has also been designed with a lower-profile collar with flexible NOMEX® webbing pull straps to slide more easily under narrower turnout gear pants.



EXTENDED SIZE RANGE
Men's: 5–16 (full and half sizes) and 17–18 (full sizes only) in Narrow, Medium, Wide, and X-Wide widths. Wide calf model available in all sizes.
Women's: 5–12 (full and half sizes) in Narrow, Medium, Wide, and X-Wide widths. Wide calf model available in all sizes.

 Certified to NFPA 1971 (Structural Fire Fighting) and NFPA 1992 (Liquid Splash).

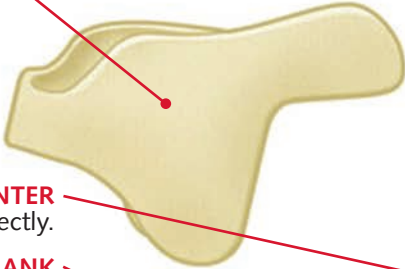
MADE IN THE USA

FLAME-RESISTANT, WATER-RESISTANT HEAVY-DUTY LEATHER
Specially softened tumbled leather in high-flex areas to move with you.

CROSSTECH® FOOTWEAR FABRIC
A full-height bootie liner made from a package of Omaha lining fabric, 300g insulation, and CROSSTECH® moisture barrier provides protection unmatched by any other waterproof, breathable barrier.



HEELPORT™ INTERNAL FIT SYSTEM
Holds your heel securely so it won't slip while cushioning your ankle.



COMPOSITE HEEL COUNTER
Individually molded to fit each size perfectly.

COMPOSITE SHANK
Lighter than steel, doesn't transmit heat or cold, springs back to shape better.

COMPOSITE PUNCTURE PROTECTION
Far more flexible than a steel plate and doesn't transmit heat or cold. Exceeds NFPA standards.

VIBRAM® CONTOURED CUP OUTSOLE
Molded outsole wraps onto the leather upper for athletic shoe performance. Flame-, abrasion-, oil-, acid-, and slip-resistant compound engineered for high traction and durability, even during prolonged exposure to extremes of heat and cold.



SLIP-RESISTANT TREAD
Siping—thin slits cut into flat areas across the sole—opens up when flexed to provide additional traction on water and ice. Self-cleaning lugs and omnidirectional tread pattern designed for superior performance in all terrains and when working on ladders.

FACTORY REFURBISHING AVAILABLE
Call customer service for details: 1-800-232-8323



FLEXIBLE NOMEX® WEBBING PULL STRAPS
Slide easily under turnout pants and are kind to your legs.

KEVLAR® BLEND PROTECTIVE SHIELD
Protects the CROSSTECH® moisture barrier, provides cut resistance, and adds thermal protection.



3D MOLDED, PADDED SHIN GUARD
Provides extra protection when you are working on a ladder.

COMPOSITE SAFETY TOE CAP
Lighter than steel, doesn't transmit heat or cold, and exceeds NFPA standards for safety.

VIBRAM® TOE BUMPER
For abrasion resistance when crawling. Cemented and two-needle stitched to the vamp.

3D MOLDED REMOVABLE FOOTBED
Contoured to cradle and cushion the bottom of your foot and to provide arch support. Moisture-wicking and anti-microbial fabric top layer.

CUSTOM FIT SYSTEM
A second, thicker removable footbed is provided for a snugger fit or when wearing lighter socks.

3D COMPOSITE LASTING BOARD
Lasted to boot uppers with a built-in flex zone in the forefoot and a torsionally stable heel. Works together with the footbed to conform to the shape of your foot.

ATHLETIC FOOTWEAR CONSTRUCTION
Two-part cross-linking adhesive bonds outsoles to the upper. Without stiff welts and ribbed mid-soles, this attachment process is far more flexible.

ONYX® 13" PULL ON


Now you can enjoy the benefits of Globe boots at a value price. The new ONYX® boots share the same cushioned and contoured outsole and athletic footwear construction as our SHADOW™ boots, so they are remarkably flexible, grip like crazy, and fit like no other.



EXTENDED SIZE RANGE

Men's: 5–16 (full and half sizes), 17–18 (full sizes only) in Narrow, Medium, Wide, and X-Wide widths.

Women's: 5–12 (full and half sizes) in Narrow, Medium, Wide, and X-Wide widths.

 Certified to NFPA 1971 (Structural Fire Fighting) and NFPA 1992 (Liquid Splash).

MADE IN THE USA

FLAME-RESISTANT, WATER-RESISTANT LEATHER
Specially softened, tumbled leather in high-flex areas to move with you.

CROSSTECH® FOOTWEAR FABRIC
A full-height bootie liner made from a package of Omaha lining fabric, 300g insulation, and CROSSTECH® moisture barrier provides protection unmatched by any other waterproof, breathable barrier.



HEELPORT™ INTERNAL FIT SYSTEM
Holds your heel securely so it won't slip while cushioning your ankle.

COMPOSITE HEEL COUNTER
Individually molded to fit each size perfectly.

COMPOSITE SHANK
Lighter than steel, doesn't transmit heat or cold, springs back to shape better.

COMPOSITE PUNCTURE PROTECTION
Far more flexible than a steel plate and doesn't transmit heat or cold. Exceeds NFPA standards.

VIBRAM® CONTOURED CUP OUTSOLE
Molded outsole wraps onto the leather upper for athletic shoe performance. Flame-, abrasion-, oil-, acid-, and slip-resistant compound engineered for high traction and durability, even during prolonged exposure to extremes of heat and cold.



SLIP-RESISTANT TREAD
Siping—thin slits cut into flat areas across the sole—opens up when flexed to provide additional traction on water and ice. Self-cleaning lugs and omnidirectional tread pattern designed for superior performance in all terrains and when working on ladders.

FLEXIBLE NOMEX® WEBBING PULL STRAPS
Slide easily under turnout pants and are kind to your legs.

3D MOLDED, PADDED SHIN GUARD
Provides extra protection when you are working on a ladder.

COMPOSITE SAFETY TOE CAP
Lighter than steel, doesn't transmit heat or cold, and exceeds NFPA standards for safety.

VIBRAM® TOE BUMPER
For abrasion resistance when crawling. Cemented and two-needle stitched to the vamp.

3D MOLDED REMOVABLE FOOTBED
Contoured to cradle and cushion the bottom of your foot and to provide arch support. Moisture-wicking and anti-microbial fabric top layer. An additional EVA insert to use in conjunction with the footbed provides for a snugger fit as needed.

3D COMPOSITE LASTING BOARD
Lasted to boot uppers with a built-in flex zone in the forefoot and a torsionally stable heel. Works together with the footbed to conform to the shape of your foot.

ATHLETIC FOOTWEAR CONSTRUCTION
Two-part cross-linking adhesive bonds outsoles to the upper. Without stiff welts and ribbed mid-soles, this attachment process is far more flexible.

FACTORY REFURBISHING AVAILABLE
Call customer service for details:
1-800-232-8323

PROXIMITY 14" PULL ON


Say goodbye to heavy, stiff, rubber boots forever. Globe PROXIMITY (patent pending) is the world's first leather Proximity boot. It's remarkably flexible, with the same cushioned and contoured sole, athletic footwear construction, and internal fit system as our original SUPREME™ structural boots. Meeting the radiant heat requirements of Proximity as well as the Structural requirements of NFPA 1971, PROXIMITY can be the one boot you wear for all your calls.



EXTENDED SIZE RANGE

Men's: 5–16 (full and half sizes) and 17 (full size only) in Narrow, Medium, Wide, and X-Wide widths. Wide calf model available in all sizes.

Women's: 5–12 (full and half sizes) in Narrow, Medium, Wide, and X-Wide widths. Wide calf model available in all sizes.

 Certified to NFPA 1971 (Proximity Fire Fighting and Structural Fire Fighting) and NFPA 1992 (Liquid Splash). Berry compliant.

MADE IN THE USA

FLAME-RESISTANT, WATER-RESISTANT HEAVY-DUTY LEATHER

Specially softened tumbled leather in high-flex areas to move with you.

ENHANCED ePTFE BARRIER BOOTIE

A full-height bootie liner made from a package of Omaha lining fabric, 300g insulation, and enhanced ePTFE barrier to provide liquid and chemical protection.

3M SCOTCHLITE™ REFLECTIVE MATERIAL

For added visibility.


Reflective Material

HEELPORT™ INTERNAL FIT SYSTEM

Holds your heel securely so it won't slip while cushioning your ankle.

COMPOSITE HEEL COUNTER

Individually molded to fit each size perfectly.

COMPOSITE SHANK

Lighter than steel, doesn't transmit heat or cold, springs back to shape better.

COMPOSITE PUNCTURE PROTECTION

Far more flexible than a steel plate and doesn't transmit heat or cold. Exceeds NFPA standards.

VIBRAM® CONTOURED CUP OUTSOLE

Molded outsole wraps onto the leather upper for athletic shoe performance. Flame-, abrasion-, oil-, acid-, and slip-resistant compound engineered for high traction and durability, even during prolonged exposure to extremes of heat and cold.



SLIP-RESISTANT TREAD

Siping—thin slits cut into flat areas across the sole—opens up when flexed to provide additional traction on water and ice. Self-cleaning lugs and omnidirectional tread pattern designed for superior performance in all terrains and when working on ladders.

FACTORY REFURBISHING AVAILABLE

Call customer service for details:
1-800-232-8323

PULL STRAPS

Flexible NOMEX® webbing pull straps reinforced with leather slide easily under turnout pants and are kind to your legs.

KEVLAR® BLEND PROTECTIVE SHIELD

Protects the CROSSTECH® moisture barrier, provides cut resistance, and adds thermal protection.



3D MOLDED, PADDED SHIN GUARD

Provides extra protection when you are working on a ladder.

ALUMINIZED PBI® FABRIC

An added layer between the leather shell and the KEVLAR® blend fiber batting provides additional radiant and conductive heat protection to meet the higher thermal requirements for proximity firefighting.



COMPOSITE SAFETY TOE CAP

Lighter than steel, doesn't transmit heat or cold, and exceeds NFPA standards for safety.

VIBRAM® TOE BUMPER

For abrasion resistance when crawling. Cemented and two-needle stitched to the vamp.

3D MOLDED REMOVABLE FOOTBED

Contoured to cradle and cushion the bottom of your foot and to provide arch support. Moisture-wicking and anti-microbial fabric top layer.

CUSTOM FIT SYSTEM

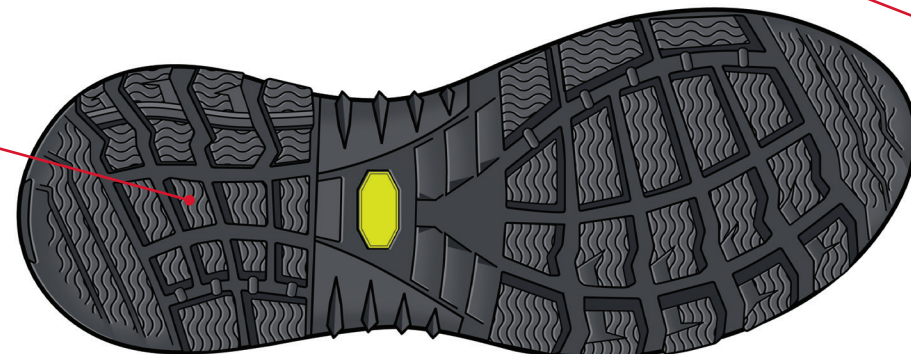
A second, thicker removable footbed is provided for a snugger fit or when wearing lighter socks.

COMPOSITE LASTING BOARD

Lasts to boot uppers with a built-in flex zone in the forefoot and a torsionally stable heel. Works together with the footbed to conform to your foot's shape.

ATHLETIC FOOTWEAR CONSTRUCTION

Two-part cross-linking adhesive bonds outsoles to the upper. Without stiff welts and ribbed mid-soles, this attachment process is far more flexible.



CBRN 15" PULL ON

When military HAZMAT teams wanted the performance and fit of leather boots meeting NFPA 1994 Class 2, but also needed to be able to decontaminate them in the field, TSWG (Technical Support Working Group), N.C. State University, and Globe collaborated on a project to make the world's first leather CBRN boots. Sharing the same athletic footwear platform as SUPREME™, these boots combine the fit, grip, and flexibility for which Globe is loved with unprecedented protection and flame resistance. They are sized to fit your foot when worn with the attached fabric booties of CBRN garments, using the included removable footbeds to adjust the fit.



SIZE RANGE (WIDE WIDTH ONLY)

Men's 5–13 (full and half sizes),
14–15 (full sizes only).



Certified to NFPA 1994 Class 2 (CBRN Terrorism).
Berry compliant.

MADE IN THE USA

ENGINEERED LEATHER
Heavy-duty, flame- and liquid-resistant, full-grain cattle hide leather with polymer coating to resist contamination.

GORE® CHEMPAK® ULTRA BARRIER FABRIC
A full-height bootie liner made from a package of Omaha lining fabric, 300g insulation, and GORE® CHEMPAK® Ultra Barrier provides certified chemical protection to NFPA 1994 Class 2 for hot-zone operations.

HEELPORT™ INTERNAL FIT SYSTEM
Holds your heel securely so it won't slip while cushioning your ankle.

COMPOSITE HEEL COUNTER
Individually molded to fit each size perfectly.

COMPOSITE SHANK
Lighter than steel, doesn't transmit heat or cold, springs back to shape better.

COMPOSITE PUNCTURE PROTECTION
Far more flexible than a steel plate and doesn't transmit heat or cold. Exceeds NFPA standards.

VIBRAM® CONTOURED CUP OUTSOLE
Molded outsole wraps onto the leather upper for athletic shoe performance. Flame-, abrasion-, oil-, acid-, and slip-resistant compound engineered for high traction and durability, even during prolonged exposure to extremes of heat and cold.



SLIP-RESISTANT TREAD
Siping—thin slits cut into flat areas across the sole—opens up when flexed to provide additional traction on water and ice. Self-cleaning lugs and omnidirectional tread pattern designed for superior performance in all terrains and when working on ladders.

FACTORY REFURBISHING AVAILABLE
Call customer service for details:
1-800-232-8323

PULL STRAPS
Flexible NOMEX® webbing pull straps reinforced with leather slide easily under turnout pants and are kind to your legs.

KEVLAR® BLEND PROTECTIVE SHIELD
Protects the CROSSTECH® moisture barrier, provides cut resistance, and adds thermal protection.

DuPont™ Kevlar®

3D MOLDED, PADDED SHIN GUARD
Provides extra protection when you are working on a ladder.

COMPOSITE SAFETY TOE CAP

Lighter than steel, doesn't transmit heat or cold, and exceeds NFPA standards for safety.

VIBRAM® TOE BUMPER
For abrasion resistance when crawling. Cemented and two-needle stitched to the vamp.

3D MOLDED FOOTBED FIT SYSTEM

Removable urethane foam footbeds are contoured to cradle and cushion the bottom of the foot and to provide arch support. Moisture-wicking and anti-microbial fabric top layer. A second pair of 3D Molded Footbeds that are thicker in the forefoot is provided to provide a snugger fit. When using with garments with attached fabric booties, use the snug, regular, or no footbed to adjust the volume inside the boot to achieve the best fit.

3D COMPOSITE LASTING BOARD

Lasted to boot uppers with a built-in flex zone in the forefoot and a torsionally stable heel. Works together with the footbed to conform to your foot's shape.

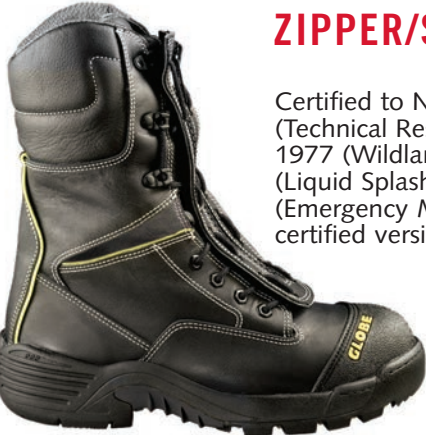
ATHLETIC FOOTWEAR CONSTRUCTION

Two-part cross-linking adhesive bonds outsoles to the upper. Without stiff welts and ribbed mid-soles, this attachment process is far more flexible.



TECHNICAL 10"/STRUCTURAL 12"

Built with our unique athletic footwear construction for remarkable flexibility, TECHNICAL is quad-certified to be the perfect complement to your structural boots. The exclusive PORON® XRD™ metatarsal guard provides impact protection you'll hardly even feel.



TECHNICAL 10" ZIPPER/SPEED LACE

Certified to NFPA 1951 (Technical Rescue), NFPA 1977 (Wildland), NFPA 1992 (Liquid Splash), and NFPA 1999 (Emergency Medical). CSA certified version available.



STRUCTURAL 12" ZIPPER/SPEED LACE

This taller lace-up boot allows it to meet the minimum height requirements of NFPA 1971, while providing the variable fit and everyday comfort of a lace-up system. Certified to NFPA 1971 (Structural Fire Fighting), NFPA 1977 (Wildland), and NFPA 1992 (Liquid Splash).

EXTENDED SIZE RANGE

Men's: 5-16 (full and half sizes), 17-18 (full sizes only) in Narrow, Medium, Wide, and X-Wide widths.
Women's: 5-12 (full and half sizes) in Narrow, Medium, Wide, and X-Wide widths.



CROSSTECH® FOOTWEAR FABRIC
A full-height bootie liner made from a package of Omaha lining fabric, 300g insulation, and CROSSTECH® moisture barrier provides protection unmatched by any other waterproof, breathable barrier.



FLAME-RESISTANT, WATER-RESISTANT HEAVY-DUTY LEATHER
Specially softened tumbled leather in high-flex areas to move with you.

COMPOSITE HEEL COUNTER
Individually molded to fit each size perfectly.

COMPOSITE SHANK
Lighter than steel, doesn't transmit heat or cold, springs back to shape better.

COMPOSITE PUNCTURE PROTECTION
Far more flexible than a steel plate and doesn't transmit heat or cold. Exceeds NFPA standards.

VIBRAM® CONTOURED CUP OUTSOLE
Molded outsole wraps onto the leather upper for athletic shoe performance. Flame-, abrasion-, oil-, acid-, and slip-resistant compound engineered for high traction and durability, even during prolonged exposure to extremes of heat and cold.



SLIP RESISTANT TREAD
Siping—thin slits cut into flat areas across the sole—opens up when flexed to provide additional traction on water and ice. Self-cleaning lugs and omnidirectional tread pattern designed for superior performance in all terrains and when working on ladders.

FACTORY REFURBISHING AVAILABLE
Call customer service for details: 1-800-232-8323



QUICKZIP CLOSURE
The advantages of a lace-up for a custom fit and the convenience of a zipper.

METATARSAL GUARD (TECHNICAL 10" ONLY)
Additional protection for the bones extending back from your toes over the instep is provided by a flexible, lightweight, molded PORON® XRD™ impact-resistant foam you'll hardly even feel.



COMPOSITE SAFETY TOE CAP
Lighter than steel, doesn't transmit heat or cold, and exceeds NFPA standards for safety.

VIBRAM® TOE BUMPER
Made from the same rugged compound as the outsole for abrasion resistance when crawling.

3D MOLDED REMOVABLE FOOTBED
Contoured to cradle and cushion the bottom of your foot and to provide arch support. Moisture-wicking and anti-microbial fabric top layer.

CUSTOM FIT SYSTEM
A second, thicker removable footbed is provided for a snugger fit or when wearing lighter socks.

3D COMPOSITE LASTING BOARD
Lasted to boot uppers with a built-in flex zone in the forefoot and a torsionally stable heel. Works together with the footbed to conform to your foot's shape.

ATHLETIC FOOTWEAR CONSTRUCTION
Two-part cross-linking adhesive bonds outsoles to the upper. Without stiff welts and ribbed mid-soles, this attachment process is far more flexible.

Globe products are manufactured to meet or exceed industry standards. To the best of our knowledge, the information contained herein is accurate at the time of publishing; however, Globe Manufacturing Company, LLC, and its affiliates assume no liability for its accuracy or completeness. Users of Globe products must satisfy themselves by independent investigation that the products and materials they have selected are safe for their intended use. We have described certain hazards, but we cannot guarantee that these are the only hazards that users may encounter. No products, including garments and footwear, protect completely, even when new; their protective performance will decline with wear, tear, abrasion, and other damage associated with use.

DUPONT, NOMEX, KEVLAR, and designs are trademarks or registered trademarks of E.I. du Pont de Nemours and Company or its affiliates.

CROSSTECH, CHEMPAK, GORE, GORE-SEAM, and designs are trademarks of W.L. Gore & Associates, Inc.

3M, SCOTCHLITE, and designs are trademarks of 3M Company.

YOCCO is a trademark of Yocco Enterprises, LLP.

CAIRNS is a registered trademark of the Trustees of the Cairns Trademark Trust.

VIBRAM and designs are registered trademarks of Vibram S.p.A.

PORON, XRD, and designs are trademarks or registered trademarks of Rogers Corporation.

PBI is a registered trademark of PBI Performance Products, Inc.

ARA-SHIELD is a registered trademark of TenCate Protective Fabrics USA.

NFPA and National Fire Protection Association are registered trademarks of the National Fire Protection Association.

UL and the UL logo are trademarks of UL LLC.

GLOBE, GLOBE FIREFIGHTER SUITS, GLOBE FOOTGEAR, G-XTREME, IH, G-XCEL, GX-7, CLASSIX, REACTION, RSX, METRO, ONYX, PREDATOR, EMSRESCUE, TECHRESCUE, SUPRALITE, SUPREME, SHADOW, HEELPORT, TRIMTRAX, AXTION, ZIPPERGRIPPER, DRAGONHIDE, SILIZONE, and designs are registered trademarks or trademarks of Globe Holding Company, LLC.

Globe Turnout Gear is manufactured by Globe Manufacturing Company, LLC, or Globe Manufacturing Company - OK, LLC, and sold by Globe Manufacturing Company, LLC. Globe Rescue Gear is manufactured and sold by Globe LifeLine, LLC. Globe Boots are manufactured and sold by Globe Footwear, LLC.

© 2015 Globe Holding Company, LLC. Details and specifications are subject to change without notice. Printed in USA. 8/15

USA:

Globe Manufacturing Company
37 Loudon Road
Pittsfield, NH 03263
Tel: 800-232-8323
603-435-8323
info@globefiresuits.com
globeturnoutgear.com

International:

Safedesign Apparel Ltd.
34 Torlake Crescent
Toronto, Ontario M8Z 1B3, Canada
Tel: 877-253-9122
416-253-9122
sales@safedesign.com
safedesign.com



ATHLETIC GEAR FOR FIREFIGHTERS.™