



TURNOUT GEAR CATALOG



ATHLETIC GEAR FOR FIREFIGHTERS.™

GLOBETURNOUTGEAR.COM

I AM A COMPETITOR.

NOT ON A FIELD OF PLAY,

ON THE FIELD OF BATTLE.

I TRAIN TO BE THE BEST.

WHEN THE BELL SOUNDS, I AM READY.

I AM AN ATHLETE



CONTENTS

| | |
|-----------------------------|----|
| HISTORY OF INNOVATION | 2 |
| TURNOUT GEAR | |
| G-XTREME® 3.0 | 6 |
| G-XTREME® | 10 |
| IH™ READY | 14 |
| REACTION® | 18 |
| G-XCEL® | 22 |
| CLASSIX® METRO™ | 26 |
| RSX™ | 30 |
| GX-7™ | 34 |
| CLASSIX® | 36 |
| PROXIMITY | 38 |
| MATERIALS | 40 |
| OPTIONS | 41 |

WHEN THE BELL SOUNDS, I AM READY.

ATHLETE



OVER 125 YEARS OF INNOVATION

Globe invented turnout gear over 125 years ago. Today we still deliver the most advanced, best-fitting, and longest-lasting protection by listening to our customers, creating breakthrough designs, and applying the engineering skills of the nation's most trusted manufacturer.

Our fourth-generation family owners, our employees, and our dealers all share a passion for building "Athletic Gear for Firefighters" in their choice of styles, materials, and options. And no matter what challenges tomorrow's firefighters face, they can be sure that Globe will continue to be there to protect them.

- 1887 Globe Manufacturing Company is founded in Lynn, MA. Courtland F.H. Freese buys the company and moves it to Pittsfield, NH, which remains its headquarters to this day.
- 1918 Globe receives a patent for a waterproof coat using an outer shell, a waterproof barrier, and a thermal lining—the same system still used today by all manufacturers of turnout gear.
- 1953 Globe is the first to use 3M Scotchlite™ reflective trim to add visibility to its turnout gear.
- 1966 Globe introduces DuPont NOMEX® inherently flame-resistant fabric.

- 1975 Globe is a charter member of the National Fire Protection Association, creating the first NFPA 1971 Standard for Protective Clothing for Structural Fire Fighting. Globe becomes the first to comply with this new standard for every turnout sold.
- 1985 Globe introduces two state-of-the-art performance fabrics: PBI® for outer shells and waterproof, breathable Gore-Tex® fabric for moisture barriers.
- 1991 Globe brings ergonomic design to turnout gear by launching the revolutionary GX-7™, which rapidly becomes the most popular turnout gear in the fire service.
- 1993 The fourth generation of the founding Freese family takes over the ownership and management of Globe. Gef (left), Rob (middle), and Don (right).
- 1994 Globe is the first manufacturer of turnouts to achieve ISO 9001 Certification.
- 1995 Globe acquires Cairns Protective Clothing.



- 2000 Recognizing that the rescue component of firefighters' jobs continues to grow, Globe introduces Globe LifeLine—the right gear for the job. Globe implements Lean Manufacturing, dramatically improving efficiency and reducing delivery times.
- 2003 Globe launches G-XTREME®—the world's most advanced turnout gear—designed to move the way the human body moves without restriction.
- 2005 REACTION® joins the Globe Cairns family, with its patented collar that attaches the liner to the outside of the jacket and adds length and fullness where the body bends.
- 2006 Globe introduces "Athletic Footwear for Firefighters," with its remarkably flexible, cushioned, and contoured construction, to choruses of "Wow."
- 2007 Globe launches IH™ Pants—integrating a Class 2 internal seat harness with floating, load-equalizing leg loops into turnout gear.
- 2008 Globe introduces G-XCEL® and RSX™ turnout gear styles—serious performance and great value.
- 2009 Another new Globe turnout style—CLASSIX®. Value-priced turnout gear with a nod to the traditional.
- 2012 G-XTREME® introduces a whole new dimension in fit—SHAPE. Now your gear can really fit your body—without extra bulk and without restriction—so that you can perform your job better.
- 2013 Globe introduces "Athletic Gear for Firefighters." Because fighting fires is demanding, physical work requiring maximum athletic performance.
- 2014 Globe introduces CLASSIX® METRO™, designed expressly for Metro departments, with a portion of proceeds to benefit the Terry Farrell Firefighters Fund, and the CLASSIX® SE, with a discount to National Volunteer Fire Council members.
- 2015 Globe introduces the evolution of Athletic Gear for Firefighters. The new G-XTREME® 3.0 is completely retailored from collar to cuff to provide even less restriction.





THE EVOLUTION OF ATHLETIC GEAR FOR FIREFIGHTERS.

INTRODUCING G-XTREME® 3.0.

Introducing G-XTREME® 3.0—the evolution of Athletic Gear for Firefighters. Completely retailored from collar to cuff to provide even less restriction, the new G-XTREME® 3.0 is the latest evolution of our original breakthrough design. With all the features that made the original America's most popular gear, including Globe's exclusive AXTION® Back, Sleeve, Seat, and Knee, you'll instantly feel how these improvements let you make all the right moves. And like the original, G-XTREME® 3.0 comes in SHAPES to fit your body better.

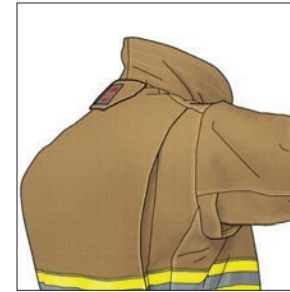
I AM DRIVEN. I WILL NOT QUIT.

ATHLETE

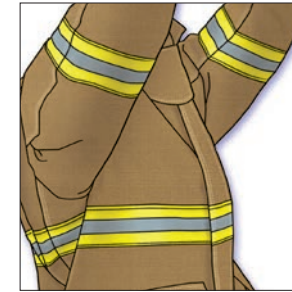
G-XTREME® 3.0 JACKET



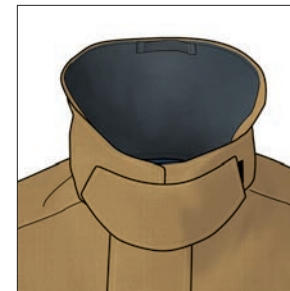
Shown with optional American flag, cuff reinforcements made from outer shell fabric, and grey wristers.



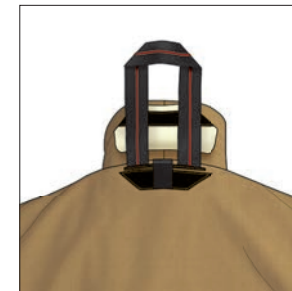
AXTION® BACK adds length across your shoulders when you work in front of you.



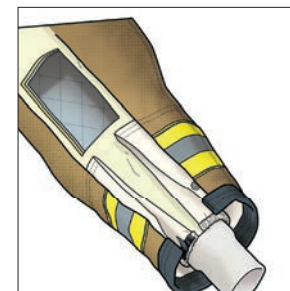
AXTION® SLEEVE provides extra length when you reach.



FREE-HANGING THROAT TAB stays out of your way when not deployed.



YOCCO™ DRAG RESCUE DEVICE is easy to deploy when you need it, out of the way when you don't.



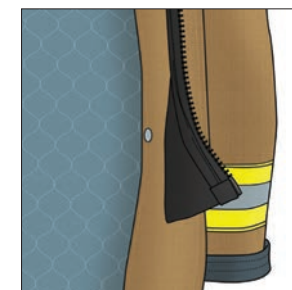
TELESCOPING SLEEVE WELLS keep water out and add thermal protection.



TRIMTRAX® THREAD PROTECTION with patented cording lasts far longer than conventional stitching.



LINER ACCESS OPENING allows for easy access between the layers.



Optional **ZIPPERGRIPPER™** (patent pending) makes starting the zipper a breeze.

G-XTREME® 3.0 JACKET

With all the features of our original G-XTREME®, including Globe's exclusive AXTION® Back and Sleeve, the new G-XTREME® 3.0 jacket is retailored in the chest, shoulder, and sleeve for even more mobility. The lower collar with a deeper neck opening is more flexible, less restrictive, and better fitting, even with your hood on. And like the original, G-XTREME® 3.0 comes in SHAPES to fit your body better.

MORE STANDARD FEATURES

THERMALLY ENHANCED UPPER BODY is oversized for more coverage.

CONTOURED SLEEVES are ergonomically curved to work with you—not against you.

ONE-PIECE CONTOURED COLLAR eliminates bulk and maintains ergonomic shape when flipped up or folded down.

EXPANSION CARGO/HANDWARMER POCKETS are reinforced with KEVLAR® fabric inside and NOMEX® fleece behind.

GENEROUS LINER POCKET is lined with moisture barrier.

DOUBLE-STITCHED SEAMS with 8–10 stitches per inch for longer service life.

Your choice of **MATERIALS**: Outer Shells, Moisture Barriers, Thermal Liners, Reinforcements, Reflective Trim, and Lettering.

Your choice of **OPTIONS**: Closures, Pockets, Holders/Clips/Straps, Patches, and Sleeve Wells/Wristers.

Your choice of **SIZES**: Chest, Length, Shape, and Sleeve, and both Men's and Women's patterns.



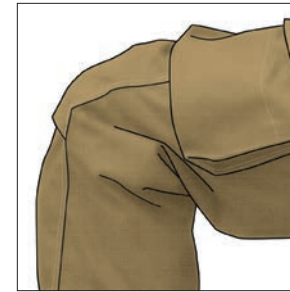
Certified to NFPA 1971 (Structural Fire Fighting).

MADE IN THE USA

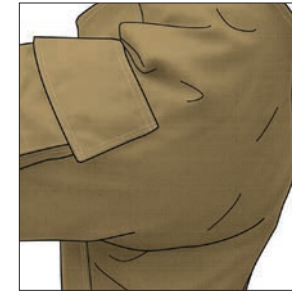
G-XTREME® 3.0 PANTS



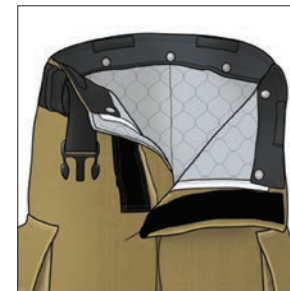
Shown with optional DRAGONHIDE® reinforcements on knees and cuffs and SILIZONE® knee padding on liner.



AXTION® KNEE adds length over the knee so you can step up, sit down, kneel, or crawl freely.



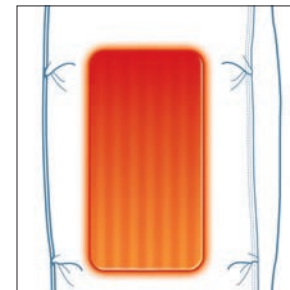
AXTION® SEAT adds length in the seat to allow you to bend at the waist and knees freely.



ADJUSTABLE BELT CLOSURE transfers weight to your hips and makes the pants fit like a pair of jeans.



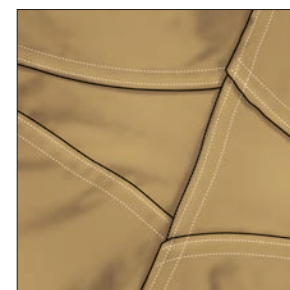
PADDLED H-BACK RIPCORDER SUSPENDERS attach to horizontal loops so there is no metal hardware to dig in or pull out.



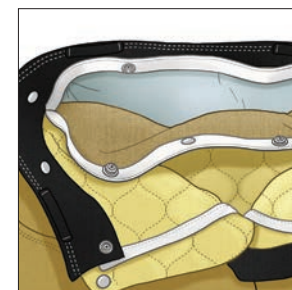
THERMALLY ENHANCED KNEES add a layer of thermal and moisture barrier to protect this high-compression area.



Optional **SILIZONE® KNEE PADDING** on liner.



DIAMOND CROTCH GUSSET distributes stress in both shell and liner for durability.



LINER ACCESS OPENING allows for easy access between the layers.

G-XTREME® 3.0 PANTS

In this latest release of our best-selling style, we've retailored the waist, seat, and thigh for less bulk, while making these pants much easier to get on and off. With all the features of our original G-XTREME® including Globe's exclusive AXTION® Seat and Knee, these pants fit like a pair of jeans and let you make all the right moves. And like the original, G-XTREME® 3.0 comes in SHAPES to fit your body better.

MORE STANDARD FEATURES

EXPANSION CARGO POCKETS are reinforced with KEVLAR® fabric inside.

INDEPENDENT STRETCH WAISTBAND for unrestricted fit and no-gap protection with liner.

REVERSE BOOT CUT is shorter in the back to avoid premature cuff wear.

VERTICAL FLY CLOSURE with hook and loop makes for fast and secure donning.

Optional **DRAGONHIDE® REINFORCEMENTS** on knees and cuffs.


TRIMTRAX® THREAD PROTECTION with patented cording lasts far longer than conventional stitching.

DOUBLE-STITCHED SEAMS with 8–10 stitches per inch for longer service life.

Your choice of **MATERIALS**: Outer Shells, Moisture Barriers, Thermal Liners, Reinforcements, Reflective Trim, and Lettering.

Your choice of **OPTIONS**: Closures, Pockets, Holders/Clips/Straps, Suspenders, and Harnesses/Loops/Pockets.

Your choice of **SIZES**: Waist, Shape, and Inseam, and both Men's and Women's patterns.

 Certified to NFPA 1971 (Structural Fire Fighting).

MADE IN THE USA

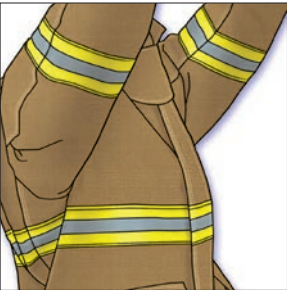
G-XTREME® JACKET



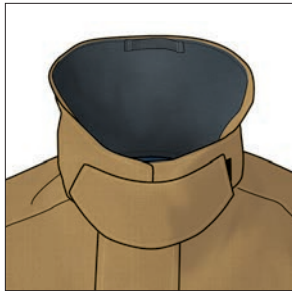
Shown with optional American flag, radio pocket, and cuff reinforcements made from outer shell fabric.



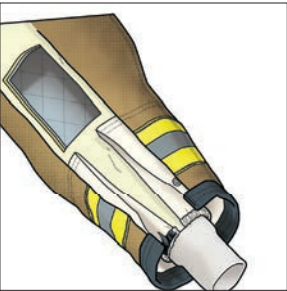
AXTION® BACK adds length across your shoulders when you work in front of you.



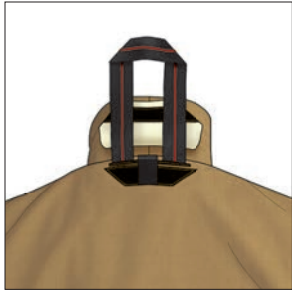
AXTION® SLEEVE provides extra length when you reach.



FREE-HANGING THROAT TAB stays out of your way when not deployed.



TELESCOPING SLEEVE WELLS keep water out and add thermal protection.



YOCCO™ DRAG RESCUE DEVICE is easy to deploy when you need it, out of the way when you don't.



THERMALLY ENHANCED UPPER BODY is oversized for more coverage.



TRIMTRAX® THREAD PROTECTION with patented cording lasts far longer than conventional stitching.



AXTION® LINER allows unrestricted movement and easy access between the layers.

G-XTREME® JACKET

Built to move the way the human body moves—without restriction—G-XTREME® provides a tailored, less bulky fit, with added length and fullness where the body bends. Its patented AXTION® Back and AXTION® Sleeve let you make all the right moves. And G-XTREME® comes in SHAPES to fit your body like never before.

MORE STANDARD FEATURES

CONTOURED SLEEVES are ergonomically curved to work with you—not against you.

CONTOURED COLLAR maintains ergonomic shape when flipped up or folded down.

EXPANSION CARGO/HANDWARMER POCKETS are reinforced with KEVLAR® fabric inside and NOMEX® fleece behind.

GENEROUS LINER POCKET is lined with moisture barrier.

DOUBLE-STITCHED SEAMS with 8–10 stitches per inch for longer service life.

Your choice of **MATERIALS**: Outer Shells, Moisture Barriers, Thermal Liners, Reinforcements, Reflective Trim, and Lettering.

Your choice of **OPTIONS**: Closures, Pockets, Holders/Clips/Straps, Patches, and Sleeve Wells/Wristers.

Your choice of **SIZES**: Chest, Length, Shape, and Sleeve, and both Men's and Women's patterns.

 Certified to NFPA 1971 (Structural Fire Fighting).

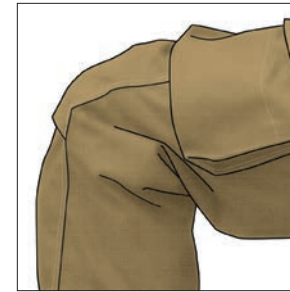
MADE IN THE USA

 ALSO AVAILABLE IN PROXIMITY

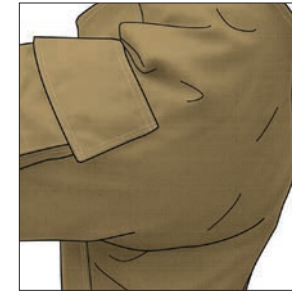
G-XTREME® PANTS



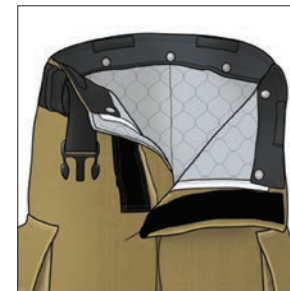
Shown with optional DRAGONHIDE® reinforcements on knees and cuffs and SILIZONE® knee padding on liner.



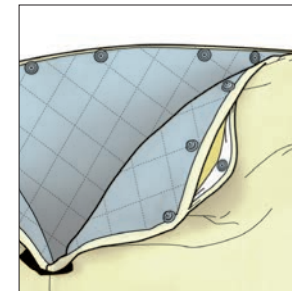
AXTION® KNEE adds length over the knee so you can step up, sit down, kneel, or crawl freely.



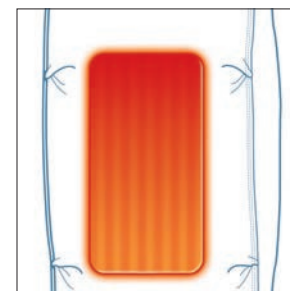
AXTION® SEAT adds length in the seat to allow you to bend at the waist and knees freely.



ADJUSTABLE BELT CLOSURE transfers weight to your hips and makes the pants fit like a pair of jeans.



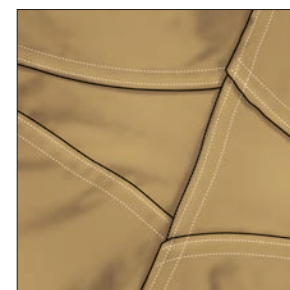
LINER ACCESS OPENING on both sides of the waist for easy access between the layers.



THERMALLY ENHANCED KNEES add a layer of thermal and moisture barrier to protect this high-compression area.



Optional **SILIZONE® FOAM KNEES** make crawling almost heavenly and don't absorb water.



DIAMOND CROTCH GUSSET distributes stress in both shell and liner for durability.



PADDED H-BACK RIPCORDER SUSPENDERS attach to horizontal loops so there is no metal hardware to dig in or pull out.

G-XTREME® PANTS

Finally, turnout pants that fit like a pair of jeans. With their adjustable belt and elasticized back transferring weight to your hips, suspenders are a preference, not a necessity. The AXTION® Seat and AXTION® Knee work together to give you completely unrestricted movement when you bend over, squat down, step up, sit down, kneel, or crawl. And G-XTREME® comes in SHAPES to fit your body like never before.

MORE STANDARD FEATURES

EXPANSION CARGO POCKETS are reinforced with KEVLAR® fabric inside.

INDEPENDENT STRETCH WAISTBAND for unrestricted fit and no-gap protection with liner.

REVERSE BOOT CUT is shorter in the back to avoid premature cuff wear.

VERTICAL FLY CLOSURE with hook and loop makes for fast and secure donning.


TRIMTRAX® THREAD PROTECTION with patented cording lasts far longer than conventional stitching.

DOUBLE-STITCHED SEAMS with 8–10 stitches per inch for longer service life.

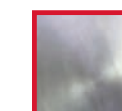
Your choice of **MATERIALS**: Outer Shells, Moisture Barriers, Thermal Liners, Reinforcements, and Reflective Trim.

Your choice of **OPTIONS**: Closures, Pockets, Holders/Clips/Straps, Suspenders, and Harnesses/Loops/Pockets.

Your choice of **SIZES**: Waist, Shape, and Inseam, and both Men's and Women's patterns.

 Certified to NFPA 1971 (Structural Fire Fighting).

MADE IN THE USA



ALSO AVAILABLE
IN PROXIMITY

IH™ READY PANTS



Shown with optional DRAGONHIDE® reinforcements on knees and cuffs and SILIZONE® knee padding on liner.



Optional **SERIES 1 INTERNAL HARNESS** with floating leg loops and low-profile waist buckle.



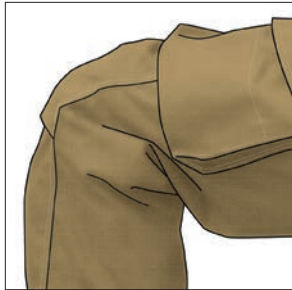
Optional **SERIES 2 INTERNAL HARNESS** with floating leg loops, hook and dee closure, and choice of auto-lock carabiner.



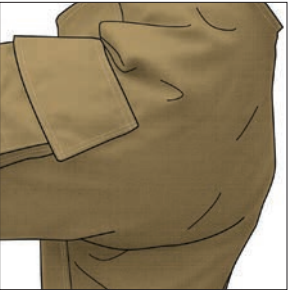
Optional **ESCAPE BELT** replaces standard belt closure.



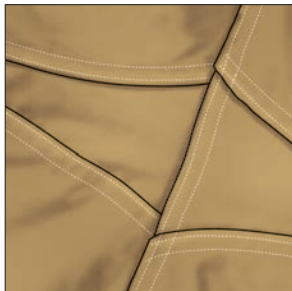
Optional **SILIZONE® FOAM KNEES** make crawling almost heavenly and don't absorb water.



AXTION® KNEE adds length over the knee so you can step up, sit down, kneel, or crawl freely.



AXTION® SEAT adds length in the seat to allow you to bend at the waist and knees freely.



DIAMOND CROTCH GUSSET distributes stress in both shell and liner for durability.



PADDED H-BACK RIPCORD SUSPENDERS attach to horizontal loops so there is no metal hardware to dig in or pull out.

IH™ READY PANTS

Your choice of internal Class 2 Seat Harnesses or a Personal Escape Belt certified to NFPA 1983 (Life Safety Rope and Equipment). Harnesses feature our patented floating leg loop system. Leg loops stay down out of your business except when you load the harness, pulling them up into the correct seat position to equalize the load. Leg loops are hardware free, so there's nothing to dig into your legs. Made from KEVLAR®, these harnesses meet NFPA 1971 (Structural Fire Fighting) requirements when installed in the pants. Not ready to upgrade to an internal harness? Add it later without alteration.

MORE STANDARD FEATURES

- ADJUSTABLE BELT CLOSURE** makes the pants fit like jeans or can be replaced by your choice of harnesses or belts, initially or down the road.
- VERTICAL FLY CLOSURE** with hook and loop makes for fast and secure donning.
- INDEPENDENT STRETCH WAISTBAND** for unrestricted fit and no-gap protection with liner.
- LINER ACCESS OPENING** on both sides of the waist for easy access between the layers.
- THERMALLY ENHANCED KNEES** add a layer of thermal and moisture barrier to protect this high-compression area.
- EXPANSION CARGO AND ROPE POCKETS** with hook and loop hardware straps and reinforced with shell fabric inside.
- REVERSE BOOT CUT** is shorter in the back to avoid premature cuff wear.
- TRIMTRAX® THREAD PROTECTION** with patented cording lasts far longer than conventional stitching.
- DOUBLE-STITCHED SEAMS** with 8–10 stitches per inch for longer service life.
- Your choice of **MATERIALS**: Outer Shells, Moisture Barriers, Thermal Liners, Reinforcements, and Reflective Trim.
- Your choice of **OPTIONS**: Closures, Pockets, Holders/Clips/Straps, and Harnesses/Loops/Pockets.
- SIZES**: Waist, Shape, and Inseam, and both Men's and Women's patterns.

A New Dimension in Fit: SHAPE

Available in G-XTREME® 3.0,
G-XTREME® and IH™ READY



ORIGINAL RELAXED SHAPE

MANY FIREFIGHTERS CHOOSE A RELAXED SHAPE FOR MAXIMUM MOBILITY. THAT'S ONE REASON WHY OUR G-XTREME® PANTS ARE SO POPULAR—ADDED LENGTH IN THE KNEE AND THE SEAT AND ADDED FULLNESS IN THE SEAT AND THIGH GIVE IT A LESS-RESTRICTIVE, RELAXED SHAPE.

REGULAR SHAPE

THOSE WHO ARE TRIMMER MAY APPRECIATE THIS NEW, CLOSER-FITTING, REGULAR SHAPE WITH ADDED LENGTH IN THE KNEE AND THE SEAT BUT WITH LESS FULLNESS IN THE SEAT AND THIGH.



ORIGINAL TAPERED SHAPE

AN ATHLETIC, TAPERED SHAPE FITS FIREFIGHTERS WITH A LARGER CHEST AND SHOULDERS WITHOUT ADDING BULK AROUND THE MIDDLE. OUR MOST POPULAR SHAPE.

STRAIGHT SHAPE

THOSE WITH A BROADER BUILD OR WHO PLAN TO WEAR A SEAT HARNESS OR OTHER EQUIPMENT AROUND THEIR WAIST UNDER THE JACKET WILL APPRECIATE THE FULLER, STRAIGHT SHAPE.



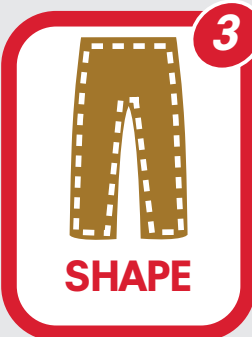
GENDER

MEN'S or
WOMEN'S



WAIST

EVEN SIZES



SHAPE

RELAXED
OR
REGULAR



INSEAM

EVEN SIZES



CHEST

EVEN SIZES



LENGTH

MEN'S: 29",
32", or 35"
WOMEN'S:
26", 29"



SHAPE

STRAIGHT
OR
TAPERED



SLEEVE

1"
INCREMENTS

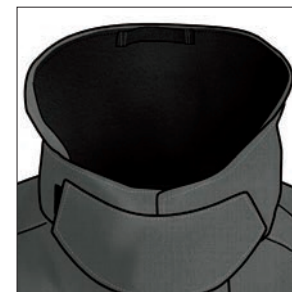
REAXTION® JACKET



Shown with optional American flag, radio pocket, and cuff reinforcements made from outer shell fabric.



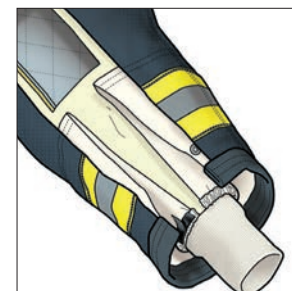
COLLBREAK™ ATTACHMENT SYSTEM with the collar sewn to the liner instead of the outer shell for a completely smooth fit across the neck.



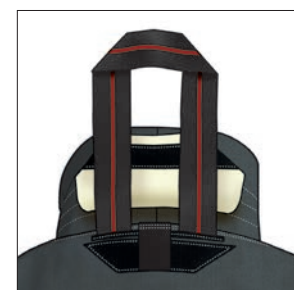
FREE-HANGING THROAT TAB stays out of your way when not deployed.



AXTION® SLEEVE provides extra length when you reach.



TELESCOPING SLEEVE WELLS keep water out and add thermal protection.



YOCCO™ DRAG RESCUE DEVICE is easy to deploy when you need it, out of the way when you don't.



THERMALLY ENHANCED UPPER BODY is oversized for more coverage.



XPS™ EXTENSION PANEL SYSTEM allows you to choose to extend the back by 3" or 6" for additional overlap and lettering below the SCBA.



REAXTION® JACKET

REAXTION® combines the latest advances in ergonomic design—like AXTION® Sleeves—with customer-favorite features—like COLLBREAK™—to put it all together for you. A Cairns Collection style.

MORE STANDARD FEATURES

Semi-bellows **CARGO/HANDWARMER POCKETS** lined with shell fabric inside and NOMEX® fleece behind hold a lot but don't bulge out in the front.

CONTOURED SLEEVES are ergonomically curved to work with you—not against you.

AXTION® LINER allows unrestricted movement and easy access between the layers.

GENEROUS LINER POCKET is lined with moisture barrier.

TRIMTRAX® THREAD PROTECTION with patented cording lasts far longer than conventional stitching.

DOUBLE-STITCHED SEAMS with 8–10 stitches per inch for longer service life.

Your choice of **MATERIALS**: Outer Shells, Moisture Barriers, Thermal Liners, Reinforcements, Reflective Trim, and Lettering.

Your choice of **OPTIONS**: Closures, Pockets, Holders/Clips/Straps, Patches, and Sleeve Wells/Wristers.

Your choice of **SIZES**: Chest, Length, and Sleeve, and both Men's and Women's patterns.

CLASSIFIED UL Certified to NFPA 1971 (Structural Fire Fighting).

MADE IN THE USA

REACTION® PANTS



Shown with DRAGONHIDE® reinforcements on knees and cuffs and SILIZONE® knee padding on liner.



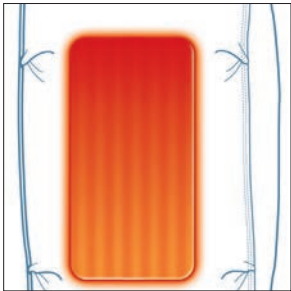
AXTION® SEAT adds length in the seat to allow you to bend at the waist and knees freely.



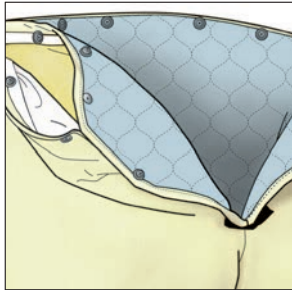
AXTION® KNEE adds length over the knee so you can step up, sit down, kneel, or crawl freely.



ADJUSTABLE BELT CLOSURE transfers weight to your hips and makes the pants fit like a pair of jeans.



THERMALLY ENHANCED KNEES add a layer of thermal and moisture barrier to protect this high-compression area.



LINER ACCESS OPENING on both sides of the waist for easy access between the layers.



Optional **SILIZONE® FOAM KNEES** make crawling almost heavenly and don't absorb water.



XPS™ EXTENSION PANEL SYSTEM allows you to choose to extend the height by 3" to maintain overlap with shorter jackets.



PADDED H-BACK RIPCORD SUSPENDERS attach to horizontal loops so there is no metal hardware to dig in or pull out.

REACTION® PANTS

When called into action, you need to fight the fire—not your gear. That's when the added length and fullness in the AXTION® Seat and Knee combine to allow you to move unlike any other turnout gear. And with its adjustable belt, REACTION® fits you like you always wanted—like a pair of jeans. A Cairns Collection style.

MORE STANDARD FEATURES

EXPANSION CARGO POCKETS with angled flaps for easy access, reinforced with shell fabric inside.

INDEPENDENT STRETCH WAISTBAND for unrestricted fit and no-gap protection with liner.

DIAMOND CROTCH GUSSET distributes stress in both shell and liner for durability.

REVERSE BOOT CUT is shorter in the back to avoid premature cuff wear.

VERTICAL FLY CLOSURE with hook and loop makes for fast and secure donning.

TRIMTRAX® THREAD PROTECTION with patented cording lasts far longer than conventional stitching.

DOUBLE-STITCHED SEAMS with 8–10 stitches per inch for longer service life.

Your choice of **MATERIALS**: Outer Shells, Moisture Barriers, Thermal Liners, Reinforcements, and Reflective Trim.

Your choice of **OPTIONS**: Closures, Pockets, Holders/Clips/Straps, Suspenders, and Harnesses/Loops/Pockets.

Your choice of **SIZES**: Waist and Inseam, and both Men's and Women's patterns.



Certified to NFPA 1971 (Structural Fire Fighting).

MADE IN THE USA

G-XCEL® JACKET



Shown with optional American flag, radio pocket, and cuff reinforcements made from outer shell fabric.



EXTENDED BACK for more overlap coverage and space for lettering below the SCBA.



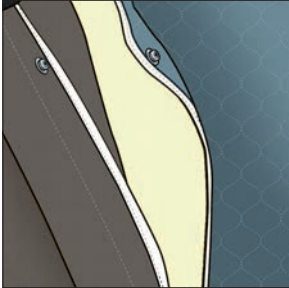
AXTION® SLEEVE provides extra length when you reach.



FREE-HANGING THROAT TAB stays out of your way when not deployed.



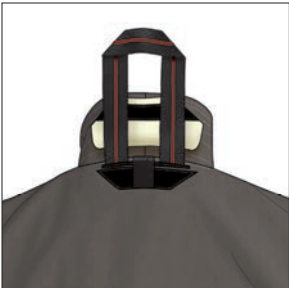
TELESCOPING SLEEVE BAND keeps debris and water out.



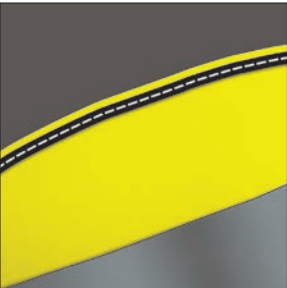
LINER ACCESS OPENING is oversized for easy access between the layers.



CARGO/HANDWARMER POCKETS lined with KEVLAR® fabric inside and NOMEX® fleece behind.



YOCCO™ DRAG RESCUE DEVICE is easy to deploy when you need it, out of the way when you don't.



TRIMTRAX® THREAD PROTECTION with patented cording lasts far longer than conventional stitching.

G-XCEL® JACKET

Being lightweight and flexible are hallmarks of this all-new chassis. With a longer back and shorter front, you get more overlap where you need it with less where you don't. So everything about this contemporary design feels just right.

MORE STANDARD FEATURES

CONTOURED SLEEVES are ergonomically curved to work with you—not against you.

Shorter **CONTOURED COLLAR** for easy interface with helmets.

GENEROUS LINER POCKET is lined with moisture barrier.

DOUBLE-STITCHED SEAMS with 8–10 stitches per inch for longer service life.

Your choice of **MATERIALS**: Outer Shells, Moisture Barriers, Thermal Liners, Reinforcements, Reflective Trim, and Lettering.

Your choice of **OPTIONS**: Closures, Pockets, Holders/Clips/Straps, Patches, and Sleeve Wells/Wristers.

Your choice of **SIZES**: Chest, Length, and Sleeve, and both Men's and Women's patterns.

CLASSIFIED
UL Certified to NFPA 1971 (Structural Fire Fighting).

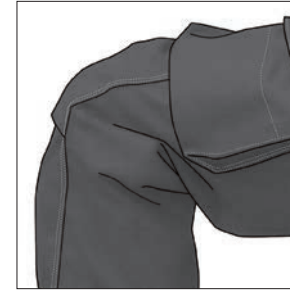
MADE IN THE USA

 ALSO AVAILABLE
IN PROXIMITY

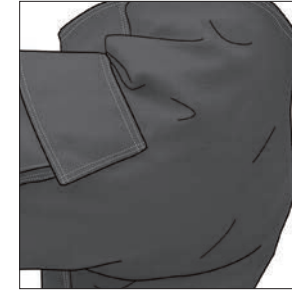
G-XCEL® PANTS



Shown with optional belt, wide belt loops, DRAGONHIDE® reinforcements on knees and cuffs, and SILIZONE® knee padding on liner.



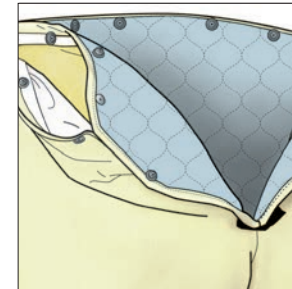
AXTION® KNEE adds length over the knee so you can step up, sit down, kneel, or crawl freely.



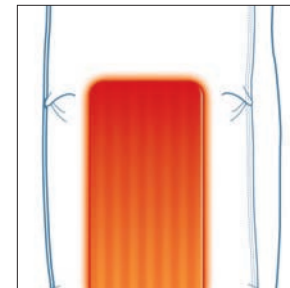
AXTION® SEAT adds length in the seat to allow you to bend at the waist and knees freely.



VERTICAL FLY CLOSURE with hook and dee and take-up straps or optional belt for fast and secure donning.



LINER ACCESS OPENING on both sides of the waist for easy access between the layers.



THERMALLY ENHANCED KNEES add a layer of thermal and moisture barrier to protect this high-compression area.



PADDED H-BACK RIPCORD SUSPENDERS attach to horizontal loops so there is no hardware to dig in or pull out.



LEFT-HAND OPENING available (as LH Pant) for left-opening external harnesses with optional harness loops.



Optional **SILIZONE® FOAM KNEES** make crawling almost heavenly and don't absorb water.

G-XCEL® PANTS

This low-rise style provides a modern fit, and with the added length you need for mobility in the knee and seat to bend, the pants don't ride down. Together with the extended back on the jacket, you can maintain generous overlap even with these lower-rise pants.

MORE STANDARD FEATURES

EXPANSION CARGO POCKETS are reinforced with KEVLAR® fabric inside.

INDEPENDENT STRETCH WAISTBAND for unrestricted fit and no-gap protection with liner.

DIAMOND CROTCH GUSSET distributes stress in both shell and liner for durability.

REVERSE BOOT CUT is shorter in the back to avoid premature cuff wear.

TRIMTRAX® THREAD PROTECTION with patented cording lasts far longer than conventional stitching.

DOUBLE-STITCHED SEAMS with 8–10 stitches per inch for longer service life.

Your choice of **MATERIALS**: Outer Shells, Moisture Barriers, Thermal Liners, Reinforcements, and Reflective Trim.

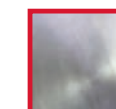
Your choice of **OPTIONS**: Closures, Pockets, Holders/Clips/Straps, Suspenders, and Harnesses/Loops/Pockets.

Your choice of **SIZES**: Waist and Inseam, and both Men's and Women's patterns.



Certified to NFPA 1971 (Structural Fire Fighting).

MADE IN THE USA

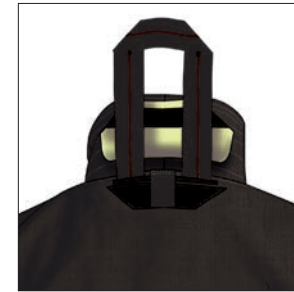


ALSO AVAILABLE IN PROXIMITY

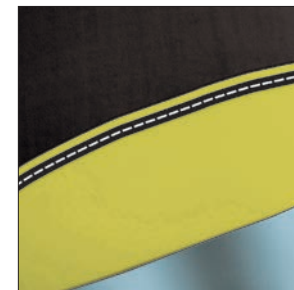
CLASSIX® METRO™ JACKET



FREE-HANGING THROAT TAB stays out of your way when not deployed.



YOCCO™ DRAG RESCUE DEVICE is easy to deploy when you need it, out of the way when you don't.



TRIMTRAX® THREAD PROTECTION with patented cording lasts far longer than conventional stitching.



LINER ACCESS OPENING for easy access between the layers.

CLASSIX® METRO™ JACKET

This metro-inspired design includes a drop-shoulder design that moves the sleeve seam beyond the shoulder for improved reach and reduced coat ride up. Together with a shorter front and longer back, this design allows enhanced freedom of movement throughout the shoulders, arms, and back with less bulk.

MORE STANDARD FEATURES

METRO EXTENDED BACK with lower trim band.

DROP-SHOULDER DESIGN moves seam beyond the shoulder for improved reach and reduced coat ride up.

DOUBLE-STITCHED SEAMS with 8–10 stitches per inch for longer service life.

SUGGESTED OPTIONS SHOWN

2" x 10" x 6" EXPANSION POCKETS with KEVLAR® fabric reinforcement pouch inside.

HOOK AND DEE FRONT CLOSURE with VELCRO® inside.

CUFF REINFORCEMENTS made from outer shell fabric.

TELESCOPING SLEEVE BAND with two grey NOMEX® wristers, one on the outer fabric barrier and one on the liner with a thumb loop.

Your choice of **MATERIALS**: Outer Shells, Moisture Barriers, Thermal Liners, Reinforcements, Reflective Trim, and Lettering.

Your choice of **SIZES**: Chest, Length, and Sleeve, and both Men's and Women's patterns.



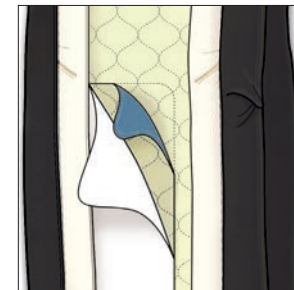
Certified to NFPA 1971 (Structural Fire Fighting).

MADE IN THE USA

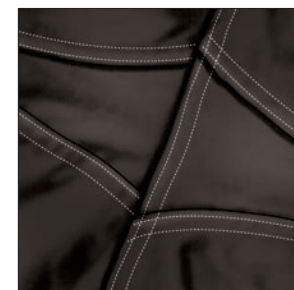
CLASSIX[®] METRO[™] PANTS



VERTICAL FLY with hook and dee positive closure and take-up straps or optional belt.



THERMALLY ENHANCED FLEX LINER KNEES add mobility and a layer of thermal and moisture barrier to protect this high-compression area.



DIAMOND CROTCH GUSSET distributes stress in both shell and liner for durability.



PADDED H-BACK RIPCORD SUSPENDERS attach to horizontal loops so there is no hardware to dig in or pull out.

CLASSIX[®] METRO[™] PANTS

This metro-inspired design includes a low-rise design with a host of standard features, including thermally enhanced flex liner knees, and lots of suggested options for metro departments, such as SILIZONE[®] knee padding and DRAGONHIDE[®] reinforcements.

MORE STANDARD FEATURES

INDEPENDENT WAISTBAND for unrestricted fit and no-gap protection with liner.

LINER ACCESS OPENING on fly for easy access between the layers.

REVERSE BOOT CUT is shorter in the back to avoid premature cuff wear.

TRIMTRAX[®] THREAD PROTECTION with patented cording lasts far longer than conventional stitching.

DOUBLE-STITCHED SEAMS with 8–10 stitches per inch for longer service life.

SUGGESTED OPTIONS SHOWN

2" x 10" x 10" EXPANSION POCKETS with KEVLAR[®] fabric reinforcement pouch inside.

DRAGONHIDE[®] REINFORCEMENTS on knees and cuffs.

SILIZONE[®] KNEE PADDING on liner.

Your choice of **MATERIALS**: Outer Shells, Moisture Barriers, Thermal Liners, Reinforcements, Reflective Trim, and Lettering.

Your choice of **SIZES**: Waist and Inseam, and both Men's and Women's patterns.



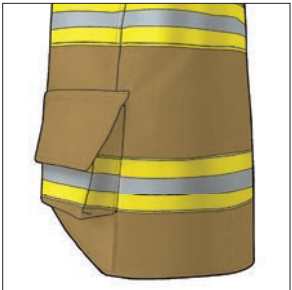
Certified to NFPA 1971 (Structural Fire Fighting).

MADE IN THE USA

RSX™ JACKET



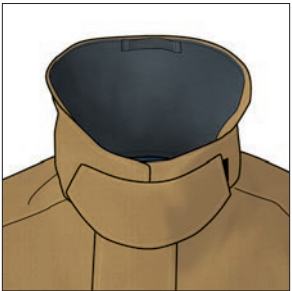
Shown with optional American flag, radio pocket, and cuff reinforcements made from outer shell fabric.



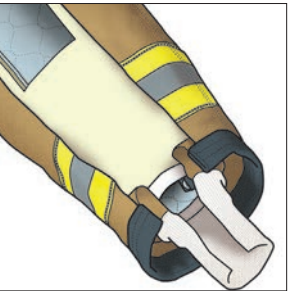
EXTENDED BACK LENGTH for more overlap coverage and space for lettering below the SCBA.



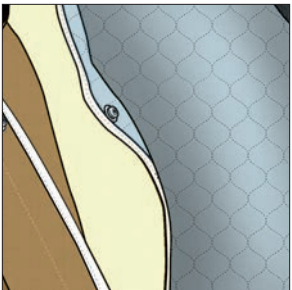
AXTION® SLEEVE provides extra length when you reach.



FREE-HANGING THROAT TAB stays out of your way when not deployed.



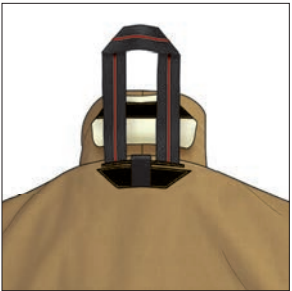
TELESCOPING CUFFS keep debris and water out.



LINER ACCESS OPENING is oversized for easy access between the layers.



Semi-bellows **CARGO/HANDWARMER POCKETS** lined with KEVLAR® fabric inside and NOMEX® fleece behind.



YOCO™ DRAG RESCUE DEVICE is easy to deploy when you need it, out of the way when you don't.



TRIMTRAX® THREAD PROTECTION with patented cording lasts far longer than conventional stitching.

RSX™ JACKET

Form and function combine to make this contemporary design light and free moving. From its low-profile, semi-bellows pockets to the telescoping cuffs and AXTION® Sleeve, you'll love how RSX™ makes it easier for you to do your job. A Cairns Collection style.

MORE STANDARD FEATURES

CONTOURED SLEEVES are ergonomically curved to work with you—not against you.

Shorter **CONTOURED COLLAR** for easy interface with helmets.

GENEROUS LINER POCKET is lined with moisture barrier.

DOUBLE-STITCHED SEAMS with 8–10 stitches per inch for longer service life.

Your choice of **MATERIALS**: Outer Shells, Moisture Barriers, Thermal Liners, Reinforcements, Reflective Trim, and Lettering.

Your choice of **OPTIONS**: Closures, Pockets, Holders/Clips/Straps, Patches, and Sleeve Wells/Wristers.

Your choice of **SIZES**: Chest, Length, and Sleeve, and both Men's and Women's patterns.

 Certified to NFPA 1971 (Structural Fire Fighting).

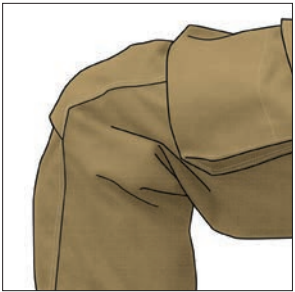
MADE IN THE USA

 ALSO AVAILABLE IN PROXIMITY

RSX™ PANTS



Shown with optional belt, wide belt loops, DRAGONHIDE® reinforcements on knees and cuffs, and SILIZONE® knee padding on liner.



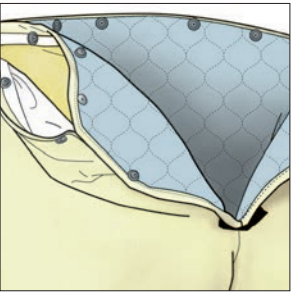
AXTION® KNEE adds length over the knee so you can step up, sit down, kneel, or crawl freely.



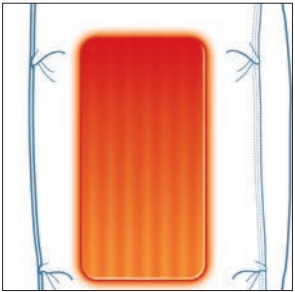
AXTION® SEAT adds length in the seat to allow you to bend at the waist and knees freely.



VERTICAL FLY CLOSURE with hook and dee and take-up straps or optional belt for fast and secure donning.



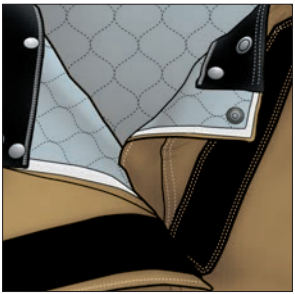
LINER ACCESS OPENING on both sides of the waist for easy access between the layers.



THERMALLY ENHANCED KNEES add a layer of thermal and moisture barrier to protect this high-compression area.



PADDED H-BACK RIPCORD SUSPENDERS attach to horizontal loops so there is no hardware to dig in or pull out.



LEFT HAND OPENING available (as Globe LH Pants) for left-opening external harnesses with optional harness loops.



Optional **SILIZONE® FOAM KNEES** make crawling almost heavenly and don't absorb water.

RSX™ PANTS

An all-new contemporary chassis gives RSX™ Pants a trimmer and lower-rise fit while still providing the added length you need for mobility in the AXTION® Knee and Seat. Standard front closure with side take-ups or optional belt keep the pants from riding down, which together with the extended back on the jacket means that you can still maintain generous overlap with pants that sit on your natural waist. A Cairns Collection style.

MORE STANDARD FEATURES

EXPANSION CARGO POCKETS are reinforced with KEVLAR® fabric inside.

INDEPENDENT STRETCH WAISTBAND for unrestricted fit and no-gap protection with liner.

DIAMOND CROTCH GUSSET distributes stress in shell and liner for durability.

REVERSE BOOT CUT is shorter in the back to avoid premature cuff wear.

TRIMTRAX® THREAD PROTECTION with patented cording lasts far longer than conventional stitching.

DOUBLE-STITCHED SEAMS with 8–10 stitches per inch for longer service life.

Your choice of **MATERIALS**: Outer Shells, Moisture Barriers, Thermal Liners, Reinforcements, and Reflective Trim.

Your choice of **OPTIONS**: Closures, Pockets, Holders/Clips/Straps, Suspenders, and Harnesses/Loops/Pockets.

Your choice of **SIZES**: Waist and Inseam, and both Men's and Women's patterns.

 Certified to NFPA 1971 (Structural Fire Fighting).

MADE IN THE USA

 ALSO AVAILABLE IN PROXIMITY

GX-7™ JACKET



Shown with optional radio pocket and ARA-SHIELD® cuff reinforcements.

MORE STANDARD FEATURES

LINER ACCESS OPENING is oversized for easy access between the layers.

YOCCO™ DRAG RESCUE DEVICE is easy to deploy when you need it, out of the way when you don't.

CONTOURED SLEEVES are ergonomically curved to work with you—not against you.

THERMALLY ENHANCED UPPER BODY & ELBOWS are oversized for more coverage.

TRIMTRAX® THREAD PROTECTION with patented cording lasts far longer than conventional stitching.

DOUBLE-STITCHED SEAMS with 8–10 stitches per inch for longer service life.

Your choice of **MATERIALS**: Outer Shells, Moisture Barriers, Thermal Liners, Reinforcements, Reflective Trim, and Lettering.

Your choice of **OPTIONS**: Closures, Pockets, Holders/Clips/Straps, Patches, and Sleeve Wells/Wristers.

Your choice of **SIZES**: Chest, Length, and Sleeve, and both Men's and Women's patterns.

 Certified to NFPA 1971 (Structural Fire Fighting).

MADE IN THE USA



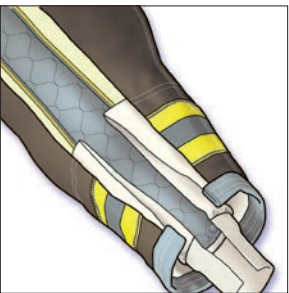
AXTION® BACK adds length across your shoulders when you work in front of you.



DUAL-ACTION CARGO POCKETS with expansion pleats, shell fabric reinforced inside, and integral handwarmers behind.



CONTOURED 2-PIECE COLLAR for better shape when flipped up or laying down with attached throat tab.



DOUBLE SLEEVE WELLS to keep water out and interface with all glove styles.

GX-7™ PANTS



Shown with optional ARA-SHIELD® reinforcements on knees and cuffs and SILIZONE® knee padding on liner.

MORE STANDARD FEATURES

HOOK AND DEE CLOSURE with hook and loop fly and take-up straps for fast and secure donning.

INDEPENDENT STRETCH WAISTBAND for unrestricted fit and no-gap protection with liner.

EXPANSION CARGO POCKETS are reinforced with shell fabric inside.

THERMALLY ENHANCED KNEES add a layer of thermal and moisture barrier to protect this high-compression area.

LINER ACCESS OPENING on both sides of the waist for easy access between the layers.

REVERSE BOOT CUT is shorter in the back to avoid premature cuff wear.

TRIMTRAX® THREAD PROTECTION with patented cording lasts far longer than conventional stitching.

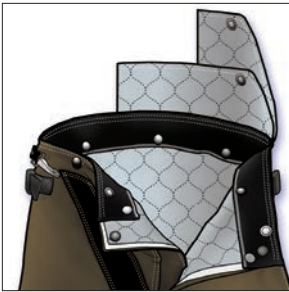
DOUBLE-STITCHED SEAMS with 8–10 stitches per inch for longer service life.

Your choice of **MATERIALS**: Outer Shells, Moisture Barriers, Thermal Liners, Reinforcements, and Reflective Trim.

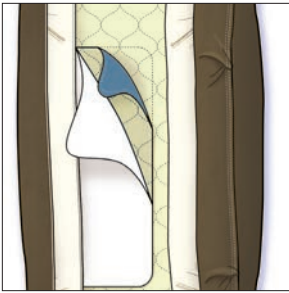
Your choice of **OPTIONS**: Closures, Pockets, Holders/Clips/Straps, Suspenders, and Harnesses/Loops/Pockets.

Your choice of **SIZES**: Waist and Inseam, and both Men's and Women's patterns.

Available in **PROXIMITY** as **AFL PANTS** with larger leg openings to go over large-diameter rubber Proximity boots.



LUMBAR PROTECTION PANELS in your choice of standard 6" back bib, optional 3", or no bib at all.



EXPANSION KNEES add fullness to the knee for improved mobility.



DIAMOND CROTCH GUSSET distributes stress in both shell and liner for durability.



SUPER-DUTY H-BACK SUSPENDERS adjust easily and move with you.

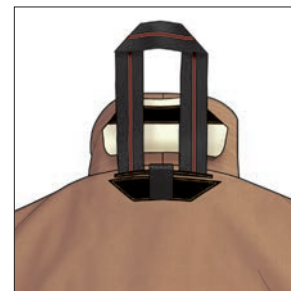
CLASSIX® JACKET



DUAL-ACTION CARGO POCKETS with KEVLAR® fabric reinforcement inside.



FREE-HANGING THROAT TAB stays out of your way when not deployed.



YOCCO™ DRAG RESCUE DEVICE is easy to deploy when you need it, out of the way when you don't.



TRIMTRAX® THREAD PROTECTION with patented cording lasts far longer than conventional stitching.

MORE STANDARD FEATURES

DROP-SHOULDER DESIGN moves seam beyond the shoulder for improved reach and reduced coat ride up.

SHORTER COLLAR for better interface with helmet.

DOUBLE SLEEVE WELLS with NOMEX® wristers to keep water out and interface with all glove styles.

LINER ACCESS OPENING for easy access between the layers.

DOUBLE-STITCHED SEAMS with 8–10 stitches per inch for longer service life.

Your choice of **MATERIALS**: Outer Shells, Moisture Barriers, Thermal Liners, Reinforcements, Reflective Trim, and Lettering.

Your choice of **OPTIONS**: Closures, Pockets, Holders/Clips/Straps, Patches, and Sleeve Wells/Wristers.

Your choice of **SIZES**: Chest, Length, and Sleeve, and both Men's and Women's patterns.

 Certified to NFPA 1971 (Structural Fire Fighting).

MADE IN THE USA

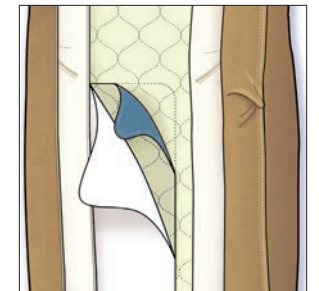
CLASSIX® PANTS



Shown with optional grey suede reinforcements on knees.



VERTICAL FLY with hook and dee positive closure and take-up straps or optional belt.



THERMALLY ENHANCED FLEX LINER KNEES add mobility and a layer of thermal and moisture barrier to protect this high-compression area.



DIAMOND CROTCH GUSSET distributes stress in both shell and liner for durability.



PADDED H-BACK RIPCORD SUSPENDERS attach to horizontal loops so there is no hardware to dig in or pull out.

MORE STANDARD FEATURES

INDEPENDENT WAISTBAND for unrestricted fit and no-gap protection with liner.

REVERSE BOOT CUT is shorter in the back to avoid premature cuff wear.

LINER ACCESS OPENING on fly for easy access between the layers.

TRIMTRAX® THREAD PROTECTION with patented cording lasts far longer than conventional stitching.

DOUBLE-STITCHED SEAMS with 8–10 stitches per inch for longer service life.

Your choice of **MATERIALS**: Outer Shells, Moisture Barriers, Thermal Liners, Reinforcements, and Reflective Trim.

Your choice of **OPTIONS**: Closures, Pockets, Holders/Clips/Straps, Suspenders, and Harnesses/Loops/Pockets.

Your choice of **SIZES**: Waist and Inseam, and both Men's and Women's patterns.

A firefighter wearing silver proximity gear and a helmet is shown in profile, facing a large fire. A SCBA tank is visible on their back. The background is a bright blue sky with orange flames.

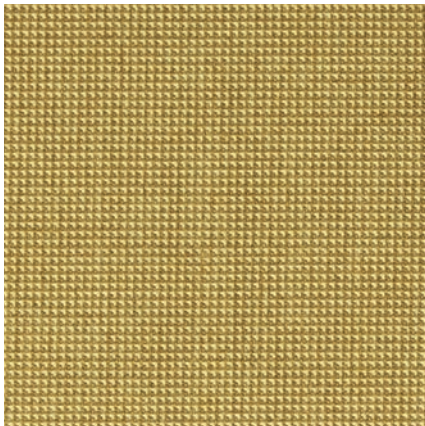
PROXIMITY GEAR: EXTREME CONDITIONS REQUIRE EXTREME PROTECTION

G-XTREME®, G-XCEL®, and RSX™ (as well as AFL Pants) are also available to meet the Proximity Fire Fighting requirement of NFPA 1971 for use in environments where high radiant heat loads may be encountered.

These garments utilize a reflective aluminized film for radiant heat resistance laminated to a knit PBI® blend for the outer shell. Globe Proximity gear is available with your choice of moisture barriers and thermal liners, as well as with a wide variety of custom options. And for lightweight and flexible protection for your feet, be sure to check out Globe Proximity boots.

MATERIALS

NFPA-certified turnout gear consists of three layers of materials, together called a composite, which is made up of an outer shell, a moisture barrier, and a thermal liner. This three-layer system was originally invented and patented by the founder of Globe over 100 years ago. Technology, design, and protection have obviously changed dramatically since those early days, but the original concept of making turnout gear from these three layers still provides the foundation of current turnout gear. For available materials in each of the categories below, please check our website at www.globeturnoutgear.com or contact your Globe Dealer.



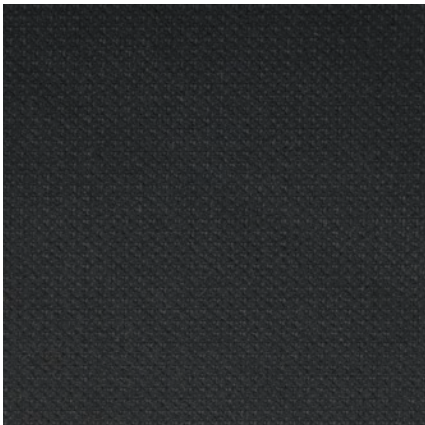
OUTER SHELLS



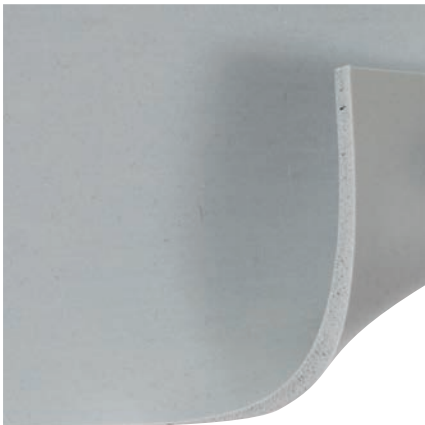
MOISTURE BARRIERS



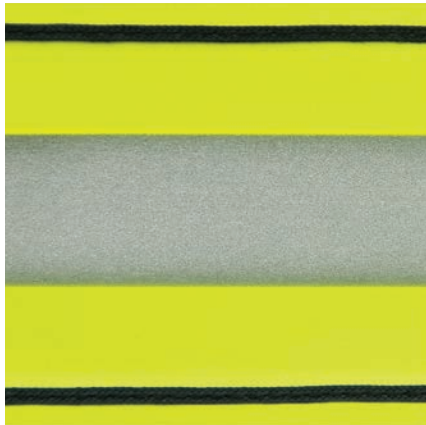
THERMAL LINERS



REINFORCEMENTS



PADDING



REFLECTIVE TRIM

OPTIONS

We can customize any of our garment styles with thousands of options from our library, developed in collaboration with our customers for over 125 years. Options are organized into the categories below for easy referencing. For available options in each of these categories, please check our website at www.globeturnoutgear.com or contact your Globe Dealer.



CLOSURES



POCKETS



HOLDERS/CLIPS/STRAPS



SLEEVE WELLS/
WRISTERS



SUSPENDERS



PATCHES



REINFORCEMENTS



HARNESSES/LOOPS/
POCKETS



TRIM STYLES



LETTERING GUIDELINES

Globe products are manufactured to meet or exceed industry standards. To the best of our knowledge, the information contained herein is accurate at the time of publishing; however, Globe Manufacturing Company, LLC, and its affiliates assume no liability for its accuracy or completeness. Users of Globe products must satisfy themselves by independent investigation that the products and materials they have selected are safe for their intended use. We have described certain hazards, but we cannot guarantee that these are the only hazards that users may encounter. No products, including garments and footwear, protect completely, even when new; their protective performance will decline with wear, tear, abrasion, and other damage associated with use.

DUPONT, NOMEX, KEVLAR, and designs are trademarks or registered trademarks of E.I. du Pont de Nemours and Company or its affiliates.

CROSSTECH, CHEMPAK, GORE, GORE-SEAM, and designs are trademarks of W.L. Gore & Associates, Inc.

3M, SCOTCHLITE, and designs are trademarks of 3M Company.

YOCCO is a trademark of Yocco Enterprises, LLP.

CAIRNS is a registered trademark of the Trustees of the Cairns Trademark Trust.

VIBRAM and designs are registered trademarks of Vibram S.p.A.

PORON, XRD, and designs are trademarks or registered trademarks of Rogers Corporation.

PBI is a registered trademark of PBI Performance Products, Inc.

ARA-SHIELD is a registered trademark of TenCate Protective Fabrics USA.

NFPA and National Fire Protection Association are registered trademarks of the National Fire Protection Association.

UL and the UL logo are trademarks of UL LLC.

GLOBE, GLOBE FIREFIGHTER SUITS, GLOBE FOOTGEAR, G-XTREME, IH, G-XCEL, GX-7, CLASSIX, REACTION, RSX, METRO, ONYX, PREDATOR, EMSRESCUE, TECHRESCUE, SUPRALITE, SUPREME, SHADOW, HEELPORT, TRIMTRAX, AXTION, ZIPPERGRIPPER, DRAGONHIDE, SILIZONE, and designs are registered trademarks or trademarks of Globe Holding Company, LLC.

Globe Turnout Gear is manufactured by Globe Manufacturing Company, LLC, or Globe Manufacturing Company - OK, LLC, and sold by Globe Manufacturing Company, LLC. Globe Rescue Gear is manufactured and sold by Globe LifeLine, LLC. Globe Boots are manufactured and sold by Globe Footwear, LLC.

© 2015 Globe Holding Company, LLC. Details and specifications are subject to change without notice. Printed in USA. 8/15

USA:

Globe Manufacturing Company
37 Loudon Road
Pittsfield, NH 03263
Tel: 800-232-8323
603-435-8323
info@globefiresuits.com
globeturnoutgear.com

International:

Safedesign Apparel Ltd.
34 Torlake Crescent
Toronto, Ontario M8Z 1B3, Canada
Tel: 877-253-9122
416-253-9122
sales@safedesign.com
safedesign.com



ATHLETIC GEAR FOR FIREFIGHTERS.™